



DELAWARE FIGHTIN' BLUE HENS

WOMEN'S LACROSSE GAME NOTES

a new era.



SERIES HISTORY vs. KENNESAW STATE

All Time	n/a
Altig vs.	n/a
Streak	n/a
At Home	n/a
On the Road	n/a
Neutral	n/a
Last Win	n/a
Last Loss	n/a

SERIES HISTORY vs. COASTAL CAROLINA

All Time	0-2
Altig vs.	0-1
Streak	L2
At Home	0-2
On the Road	n/a
Neutral	n/a
Last Win	n/a
Last Loss	14-7, H, 3/21/21

HOW TO FOLLOW

Stream.....ESPN+
 X/Instagram.....@DelawareWLAX
 Live Stats.....bluehens.com

WHO ARE WE

Only refer to our institution as the **University of Delaware** or **UD**. Do not use "U of D," "UofD," "the U of D" or "UDel." Do not use periods in "UD." We are based in Newark (new-ARK), Delaware.

We are the Fightin' Blue Hens on first reference and Blue Hens, Hens, or Blue & Gold after that.

MEDIA RELATIONS

For interview requests for women's lacrosse student-athletes or coaches, please contact Brendan Thomas, Director, Communications & Creative Services.

Email.....brendant@udel.edu
 Cell.....207-400-2840

DELAWARE (8-4, 4-0 ASUN)



Head Coach: Amy Altig
Record at UD: 44-44 (7th season)
Career Record: same
Last: W, 13-12 vs. Saint Joseph's

GM 13

KENNESAW STATE (7-6, 2-2 ASUN)



Head Coach: Laura Maness
Record at KSU: 63-88 (10th season)
Career Record: 113-174 (15th season)
Last: W, 10-8 vs. Austin Peay

thursday, april 9 | noon | newark, del. | delaware stadium (18,077) | espn+

DELAWARE (5-4, 2-0 ASUN)



Head Coach: Amy Altig
Record at UD: 44-44 (7th season)
Career Record: same
Last: W, 13-12 vs. Saint Joseph's

GM 14

COASTAL CAROLINA (8-5, 1-3 ASUN)



Head Coach: Rachel Shuck Whitten
Record at CCU: 48-37 (5th season)
Career Record: 116-86 (12th season)
Last: L, 10-9 at Lindenwood

saturday, april 11 | noon | newark, del. | delaware stadium (18,077) | espn+

OPENING DRAW

The University of Delaware women's lacrosse team closes out its home schedule this weekend with a pair of Atlantic Sun (ASUN) Conference contests against Kennesaw State and Coastal Carolina. The Fightin' Blue Hens are looking to reach 10 wins for the third-straight season and can reach the 10-win plateau with two victories this weekend.

Delaware extended its winning streak to seven-straight games, the program's longest streak since 2000, with a 13-12 non-conference victory over Saint Joseph's last week. Three different Blue Hens had a hat trick in the win, while **Jaclyn Marszal** led the way with eight points and **Sophia Muscolino** had five. **Mary Matey** had a career-high three caused turnovers and tied a personal best with five draw controls. UD held a 17-10 advantage in draw controls and forced 20 Hawks' turnovers.

Jaclyn Marszal was named the ASUN Offensive Player of the Week after her performance against the Hawks, tying her season high of four goals and dishing out four assists. She also added a key caused turnover and ground ball in the final seconds of the game to preserve the one-goal victory. Marszal factored in seven of Delaware's first eight goals as the Blue Hens overcame a halftime deficit for the first time this season. She is the first Blue Hen since **Delaney McDaniel** in 2023 to have multiple games in a season with at least eight points.

Ella Risko ranks third in the ASUN in goals (32) and goals per game (2.67), is fourth in draw controls per game (5.50), and fifth in caused turnovers per game (1.83). **Sophia Muscolino** leads the conference in points per game (4.33) and is both atop the ASUN and ranks 15th nationally in assists per game (2.67). **Jaclyn Marszal** is second in the ASUN in assists per game (1.92).

HEN LEADERS



ella risko

goals
32 goals



sophia muscolino

assists
24 assists



ella risko

points
41 points



ella risko

draws
66 draw controls



kennedy radziul

ground balls
25 ground balls



steph marszal

saves
71 saves

2026 SCHEDULE

KEY H A N



feb. 6
Philadelphia, Pa.
L, 12-10



feb. 13
Newark, Del.
L, 12-4



feb. 18
Newark, Del.
L, 15-10



march 4
Newark, Del.
W, 16-8



march 7
Washington, D.C.
L, 9-8



march 11
Philadelphia, Pa.
W, 13-6



march 14
Newark, Del.
W, 17-5



march 19
Clarksville, Tenn.
W, 19-3



march 21
St. Charles, Mo.
W, 25-7



march 26
Newark, Del.
W, 14-13



march 28
Newark, Del.
W, 16-6



april 1
Newark, Del.
W, 13-12



april 9
Newark, Del.
Noon ESPN+



april 11
Newark, Del.
Noon ESPN+



april 16
Charlotte, N.C.
Noon ESPN+



april 22
Lynchburg, Va.
2 p.m. ESPN+

*all times ET

A NEW ERA

After a nearly 18-month wait, the new era is finally here and the University of Delaware Fightin' Blue Hens are officially full members of Conference USA as of July 1, 2025. Fourteen of UD's 22 varsity programs will be housed in CUSA, with eight others joining as affiliate members in the Atlantic Sun (women's lacrosse, men's and women's swimming & diving), Atlantic 10 (men's lacrosse), Mid-American Conference (rowing), The Summit League (men's soccer), Atlantic Hockey America (ice hockey), and Mountain Pacific Sports Federation (field hockey).

An athletic department built on history and tradition, Delaware brings an abundance of success to CUSA having won 10 national championships, 172 team conference titles, 282 individual conference crowns, 342 major conference awards, 2,655 all-league selections, and 543 all-americans.

UD student-athletes complement their athletic success with strong academic performances. During the 2024-25 academic year, the Blue Hens compiled a cumulative 3.41 grade-point average—the highest in department history, excluding academic terms impacted by COVID-19. This marked the 11th-consecutive year and the 23rd-straight semester in which UD student-athletes have posted a 3.00 GPA or better.

The move will push the Delaware brand across the nation, spanning from the northeast down into Florida, and west as far as New Mexico. However, the reach won't stop there. At least five football games will hit the national scene on CBS Sports Network/ESPN family of networks, including a non-conference tilt on FOX against Colorado. Men's and women's basketball will also have the chance to play nationally televised games as part of CUSA's media rights agreement with CBS Sports Network and ESPN.

Speaking of reach, Delaware's initial announcements about joining Conference USA reached over two billion people according to social media analytics. Put that into perspective – just over one million people live in the state of Delaware. That means these announcements reached over 2,000 Delawares.



CUSA SPONSORED DELAWARE SPORTS

- Baseball
- M/W Basketball
- W Cross Country/Track & Field
- Football
- M/W Golf
- W Soccer
- Softball
- M/W Tennis
- Volleyball

OTHER DELAWARE SPORTS AFFILIATIONS

- Field Hockey
- Ice Hockey
- M Lacrosse
- W Lacrosse
- MPSF
- Atlantic Hockey America
- Atlantic 10
- Atlantic Sun
- W Rowing
- M Soccer
- M/W Swim/Dive
- Mid-American
- The Summit League
- Atlantic Sun

QUICK FACTS

School.....	University of Delaware
Location.....	Newark, Del.
Founded.....	1743
Enrollment.....	24,039
President.....	Laura Carlson
School Website.....	www.udel.edu
Nickname.....	Fightin' Blue Hens
School Colors.....	Blue & Gold
Athletics Website.....	www.bluehens.com
Director of Athletics.....	Jordan Skolnick
Conference.....	Atlantic Sun
Website.....	www.asunsports.org

WOMEN'S LACROSSE PROGRAM

Facility.....	Delaware Stadium
Capacity.....	18,077
First Season of Women's Lacrosse.....	1978
All-Time Record.....	436-357-1
All-Time Delaware Stadium Record.....	69-55
National Championships.....	3
Conference Championships.....	6
Head Coach.....	Amy Altig (James Madison '05)
Career Record.....	44-44 / 7th season
Record at UD.....	same
Letterwinners Returning/Lost.....	31/10
Starters Returning/Lost.....	10/2
Newcomers.....	8
2025 Overall Record.....	10-6
2025 CAA Record.....	6-2
2025 CAA Finish.....	3rd
2025 Postseason.....	CAA Semifinals

TABLE OF CONTENTS

A New Era.....	2
Storylines.....	3-7
Program information.....	3
Statistical comparison.....	3
What to look for.....	3
Delaware record when.....	4
On this date.....	4
Active points leaders.....	5
Statistical superlatives.....	6
Altig record vs. opponents.....	7
Milestone watch.....	7
Roster.....	8
Head coach Amy Altig.....	9
Assistant coaches & support staff.....	10
Atlantic Sun Conference.....	11
University of Delaware.....	12
Starters & stat leaders.....	13
Highs & lows.....	14-15
The last time.....	16
Season stats.....	17
NCAA Rankings.....	18-19
Player Pages.....	20-29
TV Roster.....	30-31

WHAT TO LOOK FOR...

- Delaware is 7-0 this season, and 26-11 in seven seasons under head coach **Amy Altig** when holding opponents under 85% in clearing attempts.

- With two victories this weekend, the Blue Hens will seal their third-straight 10-win season. It will be the first time Delaware has done that since the 2014-16 campaigns.

inside the streak

The Blue Hens are currently on a seven-game winning streak, the program's longest since starting the 2000 season with seven-straight wins. During the streak, Delaware has outscored its opponents 117-52 and UD's offense has scored at least 13 goals in all seven games, the longest streak by a Delaware team since 2000. The Blue Hens have scored 15 woman-up goals and have assisted on 57% (67-117) of their tallies.

In the seven games, Delaware holds a 110-89 advantage in the draw control circle, winning at a .625 clip.

The defense has held opponents to just 14.9 shot attempts per game and has forced 17 turnovers per game during the streak. Opponents are clearing at just a 72.4% (89-123) success rate, while the Blue Hens are nearly perfect at 95.3% (101-106).

balanced scoring effort

Delaware has had 14 players score a goal in 2026, with six scoring at least 15 goals. Four times, the Blue Hens have had at least 10 different players in the scoring column, with a season-high 12 players scoring a goal at Lindenwood. That is the most since 12 Blue Hens scored in an 18-4 win over Kent State on February 25, 2024.

tough sos

Delaware has had the 38th-toughest schedule in the country based on opponents winning percentage. UD's first 12 opponents hold an overall record of 78-61 (.565), including a pair of ranked matchups with Navy and Georgetown. It is the toughest schedule in the ASUN, with Jacksonville (50th, .532) the next highest.

scoreless streaking

Delaware's defense has been impressively stout this season, ranking 22nd in the country in scoring defense (9.00 goals/game). The Blue Hens have shut out their opponents in seven different quarters this season, including three-consecutive quarters against Mount St. Mary's (March 14) and first half against Austin Peay (March 19) in consecutive games.

Against the Mount, UD did not allow a goal for the final 45:16 of the game, before shutting out the Governors for the first 35:52 of game action for a consecutive scoreless streak of 71:08. Overall, Delaware has had seven different streaks in six games this season of holding opponents scoreless for 15 minutes or more.

chasing 40

Ella Rishko currently leads the Blue Hens and is third in the ASUN with 32 goals on the season. She is looking to become the first Blue Hen since **Christine Long** in 2019 to reach the 40-goal mark in a season.

sensational steph

Steph Marszal has been dominant in the cage this season, ranking second in the ASUN in goals against average (9.00), third in minutes played (720), and sixth in save percentage (.397). Her goals against average is 20th in the country. Marszal had three-straight games with 10 saves (Navy, UMBC, Georgetown), and had a .500 save percentage in five-straight games (UMBC - Austin Peay), the longest streak by a Blue Hen since **Tori Zorovich** in 2013 (min. 30 minutes played/game).

stiff defense

The Fightin' Blue Hens allowed less than 10 goals in six-straight games from March 4-21, the program's longest streak since 2016.

STATISTICAL COMPARISON

Category	DEL	NCAA	ASUN	KSU	NCAA	ASUN	CCU	NCAA	ASUN
Assists Per Game	7.92	13th	1st	2.77	--	9th	5.15	71st	4th
Caused TO Per Game	10.58	23rd	2nd	9.00	45th	4th	7.54	84th	6th
Clearing Percentage	.892	45th	3rd	.822	107th	7th	.907	30th	2nd
Draw Control Percentage	.579	26th	2nd	.545	36th	5th	.561	32nd	4th
Draw Controls Per Game	14.00	31st	3rd	12.69	51st	5th	12.38	59th	6th
Free Position Percentage	.456	59th	4th	.453	63rd	6th	.424	83rd	8th
Ground Balls Per Game	16.00	45th	4th	15.62	53rd	5th	16.23	40th	3rd
Save Percentage	.397	92nd	7th	.415	62nd	3rd	.462	22nd	1st
Scoring Defense	9.00	22nd	2nd	11.15	72nd	4th	8.77	19th	1st
Scoring Margin	4.75	19th	1st	-1.38	--	4th	2.46	39th	3rd
Scoring Offense	13.75	24th	2nd	9.77	89th	6th	11.23	65th	4th
Shot Percentage	.446	40th	3rd	.402	80th	7th	.375	108th	9th
Shots Per Game	30.83	16th	1st	24.31	92nd	7th	29.92	24th	2nd
Shots On Goal Per Game	21.33	34th	2nd	18.08	81st	6th	20.46	51st	4th
Turnovers Per Game	13.67	47th	1st	15.69	97th	6th	13.77	54th	2nd

welcome back phia

Sophia Muscolino missed the first three games of the season due to injury, but returned to the lineup against UMBC on March 4, making her first-career start. The junior has averaged 4.33 points per game and 2.67 assists per game in the nine games since her return, both of which lead the ASUN and she ranks 15th nationally in assists per game. She had a career-high seven points twice (Mount St. Mary's, Lindenwood). She had a career-high five assists against the Mount and her first-career hat trick at Lindenwood.

historic opening weekend

Delaware opened its ASUN play with a bang, enjoying a historic weekend on the road to start its inaugural season in the conference. The Blue Hens defeated Austin Peay 19-3 and Lindenwood 25-7. The 44 goals over the two-game stretch are the program's most since 1986. Against Lindenwood, the 25 goals are the most by a UD team since 1987 and is tied for the fifth most in program history. The 18-goal margin of victory is the largest since 2015. The Blue Hens dished out 17 assists against the Lions, the second-most in the Delaware record books and most in a game since 1990. Overall, 15 different players had a point over the weekend.

kennedy going beast mode

Kennedy Radziul has been a beast in the defensive zone this season, leading the Blue Hens with 25 ground balls and is second on the team with 21 caused turnovers. She had a career-high five caused turnovers at Georgetown and has had four ground balls in a game three times this spring.

filling the tub

Through their first seven home games at Delaware Stadium, the Blue Hens lead the ASUN and rank 29th nationally with an average home attendance of 381 fans. The Blue & Gold is the only ASUN program averaging more than 300 fans per game.

rishko on fire

Ella Rishko recorded a hat trick in six-straight games from February 13 (Navy) through March 19 (Austin Peay). It was the longest streak since **Caitlin McCartney** also did it in six-consecutive games over the 2012-13 seasons. Rishko also had least four points in five-straight games, the longest streak since **Delaney McDaniel** had four or more points in five-straight games between the 2024-25 seasons.

kat scoops

In Delaware's home-opener against Rutgers, **Kat Baseggio** had a career-high five ground balls to reach the 50-career ground ball milestone in her 34th-career game. The five ground balls are the most in a game by a Delaware player since March 6, 2024. Baseggio also finished with four caused turnovers, tying a career high.

centurion status achieved

Senior **Jaclyn Marszal** hit personal milestones in each of Delaware's first two games this season. She had two assists in the season opener at Temple to reach 100 career points, then added another assist against Rutgers to achieve 100 points in the Blue & Gold. Marszal had two goals as a freshman at Notre Dame.

ella day in philadelphia

Senior **Ella Rishko** reached a trio of milestones at Temple in the season opener. She had a hat trick to reach 100-career goals scored and recorded nine draw controls to surpass 100 for her career. She also reached 50-career ground balls with three on the day.

200 club

In Delaware's season opener against Temple, **Steph Marszal** became the 17th Blue Hen to reach the 200-career save mark. She is the first UD goalie to reach the mark since **Mercy McCarthy** (2019-23).

asun a good fit

The Blue Hens should fit right in during their first season in the ASUN in 2026. Delaware finished 34th in the final 2025 RPI rankings, which would have been at the top of the conference, with Liberty second at 39th. Statistically, Delaware would have ranked first in the conference in free position percentage (.545), second in scoring defense (11.63), and third in caused turnovers per game (11.19), assists per game (6.25) and turnovers per game (14.63).

altig here for the long haul

In July, Delaware and head coach **Amy Altig** agreed upon a contract extension that will keep her at the helm of the women's lacrosse program through the 2030 season. Altig was named the seventh head coach in program history in June 2019 and has led Delaware to a 36-40 record through her first six seasons, including back-to-back 10-win campaigns in 2023-24. UD won six CAA games in 2025, the program's most league wins since 1999 when the Blue Hens went 6-0 in America East play.

DELAWARE RECORD WHEN...

	2026	ALTIG
Overall	8-4	44-44
Conference	4-0	20-14
Non-conference	4-4	24-30
Home	5-2	25-20
Away	3-2	19-20
Neutral	0-0	0-4
Current streak	W7	W7
Current home streak	W5	W5
Current road streak	W3	W3
Current neutral streak	--	L5
vs. ranked opponent	0-2	1-14
Day game	8-3	42-41
Night game (5 p.m. or later)	0-1	2-3
February	0-3	11-14
March	7-1	21-19
April	1-0	12-8
May	0-0	0-3
Scoring first	6-3	27-20
Opponent scores first	1-1	16-24
Scoring 0-4 goals	0-1	0-7
Scoring 5-9 goals	0-1	2-19
Scoring 10-14 goals	3-2	22-17
Scoring 15-19 goals	4-0	18-1
Scoring 20+ goals	1-0	2-0
Allowing 0-4 goals	1-0	5-0
Allowing 5-9 goals	5-1	23-3
Allowing 10-14 goals	2-2	14-21
Allowing 15-19 goals	0-1	1-17
Allowing 20+ goals	0-0	0-3
Leading after 1st	6-2	25-8
Trailing after 1st	1-2	9-23
Tied after 1st	1-0	8-5
Leading at halftime	6-2	32-6
Trailing at halftime	1-2	8-34
Tied at halftime	1-0	4-4
Leading after 3rd	7-1	34-6
Trailing after 3rd	1-2	4-28
Tied after 3rd	0-1	4-2
Overtime	0-0	1-3
Delaware has more GBs	8-2	32-14
Opponent has more GBs	0-2	10-28
GBs are even	0-0	2-2
Delaware wins more draws	7-2	33-10
Opponent wins more draws	1-2	11-31
Draws are even	0-0	0-3
Delaware clear attempts ≥ 85%	8-1	33-22
Delaware clear attempts < 85%	0-3	11-22
Opponent clear attempts ≥ 85%	1-4	18-33
Opponent clear attempts < 85%	7-0	26-11

ON THIS DATE IN DELAWARE WLAX HISTORY...

APR

The Fightin' Blue Hens are 5-8 all-time in games played on April 9, and 10-6 on April 11. Under head coach **Amy Altig**, Delaware is 1-0 on both dates.

9/11

On April 9, 2022, **Danika Swech** had four goals and six points in a 13-11 win over William & Mary.

On April 11, 2025, **Ella Rishko** had four goals and an assist in a 15-11 win at Campbell.

ACTIVE POINTS LEADERS

Name	Yr.	G	A	P
Ella Rishko	Sr.	129	32	161
Jaclyn Marszal	Sr.	64	74	138
Morgan Gore	Sr.	83	11	94
Callie Drab	Sr.	35	28	63
Sophia Muscolino	So.	19	24	44
Riley Sturtevant	Sr.	30	7	37
McKenzie Didio	Sr.	31	2	33
Sam Paradise	Jr.	20	2	22
Lulu Rishko	So.	16	6	22
Maggie Craytor	So.	11	3	14
Grayson Buono	So.	8	6	14
Maggie Porter	Fr.	9	4	13
Julia Ciufo	Jr.	4	3	7
Sydney O'Donnell	So.	5	1	6
Meg MacMurray	So.	1	1	2
Alison Swartout	Sr.	1	0	1
Kennedy Radziul	So.	0	1	1
Kat Baseggio	Jr.	0	0	0
Molly Baumgratz	Jr.	0	0	0
Ellie Dassoulas	Sr.	0	0	0
Nichelle Desbordes	So.	0	0	0
Mia Didio	Sr.	0	0	0
Maggie Farragher	Sr.	0	0	0
Amanda Gazelle	Fr.	0	0	0
Jenny Green	Fr.	0	0	0
Lara Hoeflich	So.	0	0	0
Erin Hussey	Fr.	0	0	0
Mary Matey	Jr.	0	0	0
Kate Mercer	Sr.	0	0	0
Maddy Mobilia	Jr.	0	0	0
Marin Mooney	Fr.	0	0	0
Kylie O'Brien	So.	0	0	0
Julia Reagan	Sr.	0	0	0
Sadie Schultz	Fr.	0	0	0
Lena Stolarick	So.	0	0	0
Stella Stolarick	So.	0	0	0

GOAL/POINT STREAKS

Name	Consecutive Games	
	w/Point	w/Goal
Jaclyn Marszal	20	2
Sophia Muscolino	9	9
Maggie Porter	8	0
Morgan Gore	7	7
Callie Drab	5	4
Grayson Buono	2	0
McKenzie Didio	1	1

nakrasius promoted

Back in June, head coach **Amy Altig** announced the promotion of **Kara Nakrasius** to associate head coach. Nakrasius joined the UD program in August 2022 and has spent the past three seasons overseeing UD's efforts on defense and at the draw. In 2025, the Blue Hens ranked eighth nationally in caused turnovers per game (11.19) after ranking ninth in 2024 (10.44). Delaware has set eight program records on defense and at the draw in three seasons under Nakrasius.

Records under Nakrasius

- Team single-game CT (26)
- Team single-game GB (33)
- Team single-game DC (26)
- Team single-season DC (240)
- Individual single-game CT (Hranicka, 11)
- Individual single-season CT (Hranicka, 50)
- Individual single-game DC (Rishko, 15)
- Individual career DC (Livornese, 223)

keep the winning coming

Delaware is looking to build off of back-to-back 10-win seasons. It is the first time the program has had consecutive winning seasons since 2016-17 and the first time it has won at least 10 games in consecutive years since 2015-16.

runnin' it back

The Blue Hens return 10-of-12 starters from the 2025 season after the graduation of All-CAA Second Team selections Delaney McDaniel and Erin Gormley. Overall, UD returns 31 players who were on last season's roster, including 21 who saw action in at least one game and 13 who appeared in at least 12 games.

oh captain, my captains

Delaware will be led by a trio of senior captains in 2026 as **Maggie Farragher**, **Morgan Gore**, and **Ella Rishko** were all selected to lead the squad. Farragher and Gore are both second-time selections after serving as captains in 2025, while Rishko is a first-time captain in her second season as a Blue Hen following her transfer from Virginia Tech.

newcomers

The Blue Hens welcome eight newcomers to the roster in 2026. The group includes seven freshmen - **Amanda Gazelle**, **Jenny Green**, **Erin Hussey**, **Marin Mooney**, **Marina Mersch**, **Maggie Porter** and **Sadie Schultz** - who will all look to make their collegiate debuts in 2026. Porter transferred to Delaware after spending the fall at Penn State. Additionally, sophomore transfer **Meg MacMurray** joined the Hens after a year at Maryland.

roster breakdown

The 2026 Delaware roster features 39 players hailing from nine different states. Sisters **Ella** and **Lulu Rishko** are the only two Delawareans on the roster, while senior captain **Maggie Farragher** (Illinois) is the farthest from home. Maryland (12), Pennsylvania (8) and New York (7) are the three most represented states.

returning offensive firepower

Delaware returns three of its top-five scorers. **Jaclyn Marszal** ranked second on the team with 50 points (21g, 29a), while **Ella Rishko** had a team-leading 36 goals and 45 points, and **Morgan Gore** (30g, 2a) rounded out the top five. Overall, the Blue Hens bring back 67% of its goal-scoring production from last season.

defensive dawgs

The Blue & Gold ranked eighth in the country in 2025 with 11.19 caused turnovers per game. The Hens bring back starters **Kat Baseggio** (23 CT, 29 GB), **Maggie Farragher** (13 CT, 20 GB), and **Kennedy Radziul** (12 CT, 20 GB). Overall, UD returns 69% of its caused turnover production from 2025.

it starts at the draw

The Blue Hens went 7-0 in 2025 when winning more draws than their opponents. **Ella Rishko** set the program single-game record with 15 draw controls at Towson (April 13).

get the lead, hold the lead

The Blue Hens have been very good in recent years in holding a second-half lead. In 2025, the squad went 10-1 when leading at halftime and 9-0 when having the advantage after three quarters. Similarly, Delaware was 8-0 in 2024 when up at the midway point and 10-0 when leading after three quarters.

magic number is 10

Since **Amy Altig** became head coach prior to the 2020 season, the Blue Hens are 27-3 when holding opponents under 10 goals. On the flipside, Delaware is 39-18 when the offense scores 10 or more goals.

caa postseason honors

Delaware returns three of its five All-CAA selections from a season ago. Senior **Morgan Gore** was an All-CAA Second Team pick in 2025, earning her second-career postseason nod, and sophomores **Lulu Rishko** and **Kennedy Radziul** were both selected to the CAA All-Rookie Team.

puerto rico

Senior twins **McKenzie** and **Mia Didio** both represented Puerto Rico at the 2024 World Lacrosse Women's U20 Championship in Hong Kong, China. Their maternal grandmother is a native of Puerto Rico and the two earned spots on the Puerto Rico U20 National Team.

Puerto Rico finished fifth overall with a 6-2 record, going 3-1 in pool play and winning two consolation playoff games. McKenzie finished sixth on the team in scoring with eight goals and two assists. Mia, unfortunately, missed the tournament due to injury.

saac queen

Senior **McKenzie Didio** is currently in her second year serving as president of Delaware's Student-Athlete Advisory Committee (SAAC). During the 2025-26 academic year, Didio is also serving as a vice chair representative for Conference USA's SAAC, alongside softball graduate student **Claire Woods**.

there's something in the gene pool

The Blue Hens had two pairs of sisters on the team who are both two-thirds of a set of triplets. Seniors **Jaclyn** and **Steph Marszal** have a third sister, Jamie, who is a senior at Loyola Maryland. Sophomores **Lena** and **Stella Stolarick** also have a third sister who is on the Holy Cross track & field team.

The genetic trait of twins runs strong on the Blue Hens' roster. Seniors **McKenzie** and **Mia Didio** have spent their entire careers at UD, while junior **Molly Baumgratz** has a twin sister - Ellie - who attends the University of Tennessee. Freshman **Marina Mersch** has a twin sister - Chiara - who is also a freshman at Delaware.

Ella and **Lulu Rishko** make up a fourth set of sisters on the 2026 roster. Additionally, junior **Mary Matey's** older sister, **Kellie Ann**, played defense for the Blue Hens from 2021-24. They were both on the roster during the 2024 season.

always fightin'

Senior **Jaclyn Marszal** transferred to Delaware after playing her freshman season at the University of Notre Dame, going from the Fighting Irish to the Fightin' Blue Hens. Marszal is UD's top returning scorer from a season ago when she had 21 goals and 29 assists for 50 points. Entering her third season with the Blue & Gold, Marszal has 97 points (46g, 51a) in 32 games for Delaware after scoring two goals in five games at Notre Dame.

no place like home

Senior **Ella Rishko** played her first two collegiate seasons at Virginia Tech before transferring home to the First State to play her final two years as a Blue Hen alongside her sister **Lulu**. The Rehoboth Beach, Delaware native led UD with 36 goals and 55 draw controls in 2025, finishing with 45 total points. In two seasons at Virginia Tech, Rishko had 61 goals and 75 points over 32 games.

impressive in the classroom

In addition to their on-field success, the Hens have been showcasing their hard work in the classroom. The Blue Hens had a 3.52 team GPA during the 2025 fall semester and five student-athletes - **McKenzie Didio**, **Mia Didio**, **Amanda Gazelle**, **Morgan Gore** and **Jaclyn Marszal** - posted perfect 4.0 semesters.

new opponents on schedule

With Delaware beginning a New Era in the ASUN this season, the Blue Hens will be facing a number of first-time opponents. Eight of the team's 16 games will be against programs UD has never played, including seven of Delaware's eight ASUN matchups. The new opponents consist of Navy (Feb. 18), Austin Peay (March 19), Lindenwood (March 21), Jacksonville (March 26), Stetson (March 28), Kennesaw State (Apr. 9), Queens (Apr. 16) and Liberty (Apr. 22).

matey family affair

Junior defender **Mary Matey** is continuing a couple of family legacies as she is the fourth sister in her family to play Division I college lacrosse. She overlapped in Newark with her sister **Kellie Ann** who was also a defender for the Blue Hens from 2021-24). She also had a sister, Rachel, who played defense at James Madison (2019-23) and her oldest sister, Meghan, was a midfielder at Ohio State (2017-20).

Since 2021, Matey and her sisters have all worn #22 on the lacrosse field to honor their late father, Dave, who tragically passed away after a battle with cancer. He wore #22 as a college football linebacker at Ursinus.

glenelg pipeline

The Blue Hens have done well recruiting in Maryland, with 12 Marylanders on the 2026 roster. There are four Hens on the roster who hail from Howard County and attended high school in Glenelg. Senior twins **Jaclyn** and **Steph Marszal** (Catonsville) as well as sophomore **Nichelle Desbordes** (Ellicott City) come from Glenelg Country School, while sophomore **Lara Hoeflich** (Glenelg) went to Glenelg High School.

SCORING SUPERLATIVES

	'23	'24	'25	'26	TOT
Multi-Goal Games					
Ella Risho	11	2	11	8	32
Morgan Gore	2	5	9	6	22
Jaclyn Marszal	0	6	5	5	16
McKenzie Didio	2	1	0	5	8
Riley Sturtevant	0	0	4	3	7
Callie Drab	0	3	3	1	7
Lulu Rishko	--	--	2	3	5
Sam Paradise	--	1	4	--	5
Sophia Muscolino	--	0	0	4	4
Maggie Craytor	--	--	1	1	2
Grayson Buono	--	--	0	1	1
Sydney O'Donnell	--	--	0	1	1
Maggie Porter	--	--	--	1	1
Hat Tricks					
Ella Rishko	7	2	6	8	23
Morgan Gore	1	0	5	5	11
Jaclyn Marszal	0	4	2	2	8
Sophia Muscolino	--	0	0	2	2
Callie Drab	0	0	2	0	2
Sam Paradise	--	1	1	0	2
Riley Sturtevant	0	0	0	2	2
Maggie Craytor	--	--	1	1	2
McKenzie Didio	0	0	0	1	1
Grayson Buono	--	--	0	1	1
Multi-Point Games					
Ella Risho	12	6	12	10	40
Jaclyn Marszal	0	12	14	10	36
Morgan Gore	4	5	9	8	26
Callie Drab	0	7	6	4	17
Sophia Muscolino	--	1	0	9	10
Riley Sturtevant	0	0	4	5	9
McKenzie Didio	2	1	0	5	8
Lulu Rishko	--	--	3	3	6
Sam Paradise	--	1	5	--	6
Grayson Buono	--	--	0	4	4
Maggie Craytor	--	--	1	2	3
Sydney O'Donnell	--	--	0	2	2
Maggie Porter	--	--	--	2	2
Julia Ciufu	--	0	0	1	1
Games with 5+ Points					
Ella Risho	4	1	4	2	11
Jaclyn Marszal	0	4	3	3	10
Sophia Muscolino	--	0	0	5	5
Morgan Gore	0	0	1	1	2
Riley Sturtevant	0	0	0	1	1
McKenzie Didio	0	0	0	1	1
Grayson Buono	--	--	0	1	1
Callie Drab	0	0	1	0	1
Games with 10+ Saves					
Steph Marszal	--	4	3	3	10

ALTIG VS.

OPPONENT	H	A	N	OVR
Army	0-1	0-0	0-0	0-1
Austin Peay *	0-0	1-0	0-0	1-0
Campbell	1-0	1-0	0-0	2-0
Coastal Carolina	0-1	0-0	0-0	0-1
Delaware State	1-0	0-0	0-0	1-0
Denver	0-0	0-1	0-0	0-1
Drexel	0-2	1-2	0-1	1-5
Duquesne	1-0	0-0	0-0	1-0
Elon	2-0	2-1	0-0	4-1
George Mason	0-0	0-1	0-0	0-1
Georgetown	0-3	1-3	0-0	1-6
Hofstra	0-2	2-0	0-0	2-2
Jacksonville *	1-0	0-0	0-0	1-0
James Madison	0-0	0-1	0-0	0-1
Kennesaw State *	0-0	0-0	0-0	0-0
Kent State	1-0	0-0	0-0	1-0
La Salle	1-0	0-1	0-0	1-1
Lafayette	2-0	0-0	0-0	2-0
Lehigh	1-0	1-0	0-0	2-0
Liberty *	0-0	0-0	0-0	0-0
Lindenwood *	0-0	1-0	0-0	1-0
Maryland	0-0	0-1	0-0	0-1
Monmouth	2-0	1-0	0-0	3-0
Mount St. Mary's	2-0	1-0	0-0	3-0
Navy *	0-1	0-0	0-0	0-1
Niagara	0-0	0-0	0-1	0-1
Old Dominion	1-0	1-0	0-0	2-0
Penn	0-0	0-1	0-0	0-1
Princeton	0-1	0-0	0-0	0-1
Queens *	0-0	0-0	0-0	0-0
Rutgers	0-2	0-2	0-0	0-4
Saint Joseph's	1-1	0-1	0-0	1-2
Stetson *	1-0	0-0	0-0	1-0
Stony Brook	0-1	0-2	0-1	0-4
Temple	1-2	1-2	0-0	2-4
Towson	1-2	1-0	0-1	2-3
UMBC	2-1	2-0	0-0	4-1
Wagner	1-0	1-0	0-0	2-0
William & Mary	2-0	0-2	0-0	2-2
TOTALS	25-20	19-20	0-4	44-44

Bold indicates 2026 opponent
 * Indicates first meeting in 2026

new head hen

Jordan Skolnick was named the University of Delaware's Director of Athletics & Campus Recreation in January. Skolnick joined UD Athletics in 2016 and served as interim director of athletics & campus recreation since March 2025. He is the eighth person in the department's history to hold the permanent role. Skolnick successfully guided the department through its transitions to Conference USA and the Football Bowl Subdivision (FBS), while prioritizing a renewed focus on campus collaboration to increase partnerships and ensure the University's ability to capitalize on increased national exposure.

for the 302

Delaware is one of 11 states that are represented by one area code. Delaware is the 302, while the other states are: Alaska, Hawaii, Maine, Montana, New Hampshire, North Dakota, Rhode Island, South Dakota, Vermont, and Wyoming.

birds of a feather

With over 1,100 schools in the NCAA, the Blue Hens are one of two institutions with the nickname in the hen family. Pomona-Pitzer, a Division III institution, is nicknamed the Sagehens. Both South Carolina and Jacksonville State have the nickname Gamecocks and Coastal Carolina is the Chanticleers, which both fall in the rooster family.

MILESTONE WATCH

150-Career Points

Jaclyn Marszal 138

100-Career Points

Morgan Gore 95

50-Career Ground Balls

Maggie Farragher 46

Jaclyn Marszal 45

Kennedy Radziul 45

Morgan Gore 44

50-Career Caused Turnovers

Kat Baseggio 42

Maggie Farragher 38

Kennedy Radziul 33

GAMES/STARTS STREAKS

	Consecutive	
	GP	GS
Jaclyn Marszal *	44	9
Kat Baseggio *	44	1
Callie Drab	44	0
Ella Rishko *	28	28
Riley Sturtevant	28	3
Lulu Rishko	26	0
Steph Marszal	21	21
Molly Baumgratz	20	1
Kennedy Radziul	20	1
Maggie Farragher	15	15
Lena Stolarick	13	1
Mary Matey	13	1
Maggie Porter	12	0
Maggie Craytor	12	0
Sydney O'Donnell	12	0
McKenzie Didio	11	0
Morgan Gore	9	9
Sophia Muscolino	9	1
Julia Ciufo	7	0
Grayson Buono	6	0

* indicates has played every game of UD career

2026 DELAWARE NUMERICAL ROSTER

#	NAME	POS.	YR.	HT.	HOMETOWN/HIGH SCHOOL (PREV. SCHOOL)
1	Stella Stolarick	A	So.	5-5	Haddonfield, N.J. / Haddonfield Memorial
2	Grayson Buono	A	So.	5-7	Wayne, Pa. / Radnor
3	Lara Hoeflich	D	So.	5-7	Glenelg, Md. / Glenelg High
4	Marin Mooney	A	Fr.	5-8	Villanova, Pa. / Radnor
6	Jenny Green	D	Fr.	5-5	Garnet Valley, Pa. / Garnet Valley
7	Julia Ciufu	M	Jr.	5-3	Reisterstown, Md. / Roland Park Country
8	Jaclyn Marszal	A	Sr.	5-8	Catonsville, Md. / Glenelg Country School (Notre Dame)
9	Kat Baseggio	D	Jr.	5-9	Guilford, Conn. / Guilford
10	McKenzie Didio	A	Sr.	5-6	Westport, Conn. / Staples
11	Julia Reagan	M	Sr.	5-3	East Atlantic Beach, N.Y. / Sacred Heart Academy
12	Erin Hussey	M	Fr.	5-7	Severna Park, Md. / Severna Park
13	Maggie Craytor	A	So.	6-0	Charlottesville, Va. / Western Albemarle
14	Sophia Muscolino	A	Jr.	5-4	Baldwinsville, N.Y. / Charles W. Baker
15	Meg MacMurray	A	So.	5-8	Chester Springs, Pa. / The Hill School (Maryland)
16	Callie Drab	A	Sr.	5-7	Suffern, N.Y. / Suffern
17	Morgan Gore	M	Sr.	5-6	Crofton, Md. / Arundel
18	Lena Stolarick	D	So.	5-4	Haddonfield, N.J. / Haddonfield Memorial
19	Maggie Porter	A	Fr.	5-5	Stevenson, Md. / St. Paul's School for Girls (Penn State)
20	Sam Paradise	M	Jr.	5-8	Perry Hall, Md. / Maryvale Preparatory
21	Kate Mercer	D	Sr.	5-8	Katonah, N.Y. / John Jay
22	Mary Matey	D	Jr.	5-6	Phoenixville, Pa. / Archbishop Carroll
23	Lulu Rishko	M	So.	5-5	Rehoboth Beach, Del. / Cape Henlopen
24	Kylie O'Brien	D	So.	5-6	Berwyn, Pa. / Academy of Notre Dame de Namur
25	Amanda Gazelle	M	Fr.	5-3	Odenton, Md. / Archbishop Spalding
26	Alison Swartout	M	Sr.	5-4	Charlottesville, Va. / Monticello
27	Maddy Mobilia	D	Jr.	5-1	New Rochelle, N.Y. / The Ursuline School
28	Maggie Farragher	D	Sr.	5-7	Evanston, Ill. / Evanston Township
29	Kennedy Radziul	D	So.	5-9	Northport, N.Y. / Northport
30	Marina Mersch	GK	Fr.	5-3	Media, Pa. / Cardinal O'Hara
31	Maddie George	GK	So.	5-9	Centreville, Md. / Queen Anne's County
32	Ella Rishko	A	Sr.	5-5	Rehoboth Beach, Del. / Cape Henlopen (Virginia Tech)
33	Sydney O'Donnell	M	So.	5-8	Downingtown, Pa. / Downingtown West
34	Riley Sturtevant	M	Sr.	5-7	Springfield, Va. / West Springfield
35	Nichelle Desbordes	M	So.	5-3	Ellicott City, Md. / Glenelg Country School
37	Mia Didio	M	Sr.	5-5	Westport, Conn. / Staples
38	Sadie Schultz	M	Fr.	5-6	Riverhead, N.Y. / Riverhead
40	Steph Marszal	GK	R-Sr.	5-4	Catonsville, Md. / Glenelg Country School
41	Molly Baumgratz	M	Jr.	5-8	Charlotte, N.C. / Charlotte Catholic
42	Ellie Dassoulas	A	Sr.	5-8	Towson, Md. / Roland Park Country School

GEOGRAPHICAL

Connecticut (3)

- 9 Kat Baseggio
- 10 McKenzie Didio
- 37 Mia Didio

Delaware (2)

- 32 Ella Rishko
- 23 Lulu Rishko

Illinois (1)

- 28 Maggie Farragher

Maryland (12)

- 3 Lara Hoeflich
- 7 Julia Ciufu
- 8 Jaclyn Marszal
- 12 Erin Hussey
- 17 Morgan Gore
- 19 Maggie Porter
- 20 Sam Paradise
- 25 Amanda Gazelle
- 31 Maddie George
- 35 Nichelle Desbordes
- 40 Steph Marszal
- 42 Ellie Dassoulas

North Carolina (1)

- 41 Molly Baumgratz

New Jersey (2)

- 18 Lena Stolarick
- 1 Stella Stolarick

New York (7)

- 11 Julia Reagan
- 14 Sophia Muscolino
- 16 Callie Drab
- 21 Kate Mercer
- 27 Maddy Mobilia
- 29 Kennedy Radziul
- 38 Sadie Schultz

Pennsylvania (8)

- 2 Grayson Buono
- 4 Marin Mooney
- 6 Jenny Green
- 15 Meg MacMurray
- 22 Mary Matey
- 24 Kylie O'Brien
- 30 Marina Mersch
- 33 Sydney O'Donnell

Virginia (3)

- 13 Maggie Craytor
- 26 Alison Swartout
- 34 Riley Sturtevant

PRO-NUN-SEE-AY-SHUNS

1 Stella Stolarick	STOLL-are-ick	27 Maddy Mobilia	Moe-BEAL-yuh
2 Grayson Buono	BYOU-no	28 Maggie Farragher	FAIR-uh-grr
3 Lara Hoeflich	LAH-ruh HOE-flick	29 Kennedy Radziul	RAD-zool
4 Marin Mooney	MARE-in	30 Marina Mersch	MERSH
7 Julia Ciufu	CHEW-foe	34 Riley Sturtevant	STIR-duh-vont
8 Jaclyn Marszal	MARZ-elle	35 Nichelle Desbordes	des-BORE-des
9 Kat Baseggio	Buh-SEE-GEE-oh	37 Mia Didio	DID-ee-oh
10 McKenzie Didio	DID-ee-oh	40 Steph Marszal	MARZ-elle
14 Sophia Muscolino	Mus-KUH-lee-no	41 Molly Baumgratz	BUM-gratz
18 Lena Stolarick	LEE-nuh STOLL-are-ick	42 Ellie Dassoulas	da-SOOL-is
22 Mary Matey	MAY-tee	AC Kara Nakrasius	Nah-KRAY-shus
26 Alison Swartout	SWORE-tout	AC Lilly Siskind	sis-KIND

ROSTER BY CLASS

SENIORS (13)

- Ellie Dassoulas
- McKenzie Didio
- Mia Didio
- Callie Drab
- Maggie Farragher
- Morgan Gore
- Jaclyn Marszal
- Steph Marszal
- Kate Mercer
- Julia Reagan
- Ella Rishko
- Riley Sturtevant
- Alison Swartout

JUNIORS (7)

- Kat Baseggio
- Molly Baumgratz
- Julia Ciufu
- Mary Matey
- Maddy Mobilia
- Sophia Muscolino
- Sam Paradise

SOPHOMORES (12)

- Grayson Buono
- Maggie Craytor
- Nichelle Desbordes
- Maddie George
- Lara Hoeflich
- Meg MacMurray
- Kylie O'Brien
- Sydney O'Donnell
- Kennedy Radziul
- Lulu Rishko
- Lena Stolarick
- Stella Stolarick

FRESHMEN (7)

- Amanda Gazelle
- Jenny Green
- Erin Hussey
- Marina Mersch
- Marin Mooney
- Maggie Porter
- Sadie Schultz

HEAR OUR NAMES





THE ALTIG FILE

Hometown: Millersville, Md.
Alma Mater: James Madison '05
Degree: Kinesiology
Years in Coaching: 21st in 2026

NOTABLE HIGHLIGHTS

Coach
 2015 IWLCA Assistant Coach of the Year
 U.S. Lacrosse Virginia Chapter Hall of Fame
 USA National Team Defensive Coordinator

Player
 2x All-CAA selection
 2x CAA Champion
 2009 USA World Cup Training Team
 2008 USA Prague Touring Team
 2003 USA National Team

AS DELAWARE HEAD COACH

Year	7th in 2026
Overall Record	44-44
Home	25-20
Away	19-20
Neutral	0-4
vs. Ranked Teams	1-14
In ASUN Games	4-0
Postseason	0-3

ALTIG YEAR-BY-YEAR

YEAR	W-L	PCT.	CONF
2020	2-3	.400	1-0
2021	1-5	.167	0-0
2022	5-12	.294	2-4
2023	8-8	.500	4-3
2024	10-6	.625	3-5
2025	10-6	.625	6-2
2026	8-4	.667	4-0
TOTAL	44-44	.500	20-14

First career win: 17-8 vs. Duquesne (3/4/20)

HEAD COACH AMY ALTIG

Amy Altig enters her seventh season at the helm of the Fightin' Blue Hens in 2026. She was named the seventh coach of University of Delaware women's lacrosse program on June 3, 2019.

Altig has led the Blue Hens to immense success on the field, qualifying for the CAA Championship in three of four years since 2022. The program recorded back-to-back 10-win seasons in 2024-25, achieving the mark for the first time 2016, and UD's 7-1 record to begin the 2024 season was the best start since the 2016 season. Delaware won six CAA games in 2025, the most since joining the conference and the program's most league wins since 1999.

On March 11, 2022, the Blue Hens defeated No. 18 Temple on the road for their first win over a nationally-ranked opponent since 2017.

Delaware's student-athletes have taken home plenty of hardware since Altig arrived in Newark. Delaney McDaniel earned CAA Rookie of the Year honors in 2018, UD's first conference major award winner since 2016. Madison Hranicka was named the CAA Defensive Player of the Year in consecutive seasons (2023-24). The Blue Hens have earned 14 all-conference honors, led by three-straight All-CAA First Team selections by Hranicka (2022-24) and three by McDaniel. On the national level, Hranicka earned All-America honors in 2024 and all-region recognition in both 2023 and 2024. Erin Gormley was an all-region selection in 2025.

The Blue & Gold have had several statistical achievements with Altig at the helm. In 2025, the Blue Hens led the CAA and ranked sixth nationally in free position percentage (.545) while also ranking eighth in the country in caused turnovers per game (11.19). Against Lafayette in 2024, the Blue Hens set a program record for caused turnovers (26) and tied the record for ground balls (33). Goalkeeper Steph Marzsai finish ninth in the country in save percentage (.489) in 2024. Hranicka set the single-season program record in 2023 with 50 caused turnovers.

Altig arrived to Newark following nine seasons at Penn State University, where she was an assistant coach for six years and an associate head coach for the final three. She helped lead the Nittany Lions to 111 wins with seven NCAA Tournament appearances and two trips to the NCAA Tournament Final Four. During her tenure, she coached 19 All-Americans, 36 all-region performers, 40 all-conference selections in addition to more than 25 student-athletes who received academic honors. Additionally, PSU boasted three Conference Goalkeepers of the Year under Altig's guidance.

After helping Penn State to a third NCAA quarterfinal appearance in four years in 2015, Altig was named IWLCA Assistant Coach of the Year and was inducted to the U.S. Lacrosse Virginia Chapter Hall of Fame.

Prior to her time at PSU, Altig held assistant coaching stints at Princeton University (2007-10) and the University of Richmond (2005-06).

As a goalkeeper at James Madison University from 2001-05, Altig led the Dukes to two CAA titles, was a two-time all-conference pick and was selected to the North/South STX Senior All-Star Game. A two-time team captain, she also earned a nod to the 2004 CAA All-Tournament Team and still ranks in the Top 12 of three career statistical categories at JMU.

Altig earned a spot on the USA National Team in 2003 and was part of the 2009 USA World Cup Training Team and 2008 USA Prague Touring Team. She also served as a field coach for USA Tryouts from 2015-17. Since 2017, Altig has been the defensive coordinator/goalkeepers coach for the USA National Team.

A native of Millersville, Md., Altig earned a bachelor's degree in kinesiology with a concentration in sports management from James Madison in 2005. She and her wife, Megan, have two daughters, Ava, and Ryan, and a son, Brooks.

ALTIG'S COACHING ASSIGNMENTS

YEAR	SCHOOL	POSITION
2020-Pres.	Delaware	Head Coach
2017-19	Penn State	Associate Head Coach
2011-16	Penn State	Assistant Coach
2007-10	Princeton	Assistant Coach
2005-06	Richmond	Assistant Coach

SUPERLATIVES UNDER ALTIG

Most Goals	25, at Lindenwood (3/21/26)	Most Opp. Goals	20, 2x, last vs. Drexel (5/1/25)
Fewest Goals	2, 2x, last at Maryland (3/1/22)	Fewest Opp. Goals	3, 2x, last at Austin Peay (3/19/26)
Most SOG	36, vs. Delaware State (2/24/21)	Most Opp. SOG	36, at Maryland (3/1/22)
Fewest SOG	6, vs. Stony Brook (4/6/24)	Fewest Opp. SOG	6, 2x, last vs. Lafayette (3/6/24)
Most GBs	33, vs. Lafayette (3/6/24)	Most Opp. GBs	30, vs. William & Mary (4/9/22)
Most CTs	26, vs. Lafayette (3/6/24)	Most Opp. CTs	19, vs. Lafayette (3/6/24)
Most DCs	26, vs. Old Dominion (2/25/23)	Most Opp. DCs	28, vs. Georgetown (3/8/25)
Most Saves	21, at Maryland (3/1/22)	Most Opp. Saves	20, 2x, last at Old Dominion (3/26/22)

ASSISTANT COACHES

KARA NAKRASIOUS



Kara Nakrasious joined the coaching staff in August 2022 as an assistant coach and was promoted to associate head coach in June 2025. Nakrasious works primarily with the program's defensive and draw control units.

Under her guidance, the UD defense ranked in the top-10 nationally in 2024 and 2025 in caused turnovers per game. In 2024, the Blue Hens held opponents to the least number of goals allowed (160) since the 2017 season. Madison Hranicka earned back-to-back CAA Defensive Player of the Year recognition in 2023 and 2024.

At the draw, Nakrasious oversaw Delaware's unit that shattered the program record for draws in a single season (240) in 2023, averaging a CAA-leading 15.0 draw controls per game. Delaware set a program record with 26 draw controls in a single-game against Old Dominion. Danielle Livornese became UD's career draw control leader, finishing with 223. Ella Rishko set the individual single-game mark with 15 draw controls against Towson in 2025.

Prior to her arrival at UD, Nakrasious was on staff at Quinnipiac as an assistant coach in 2022, leading a defense that allowed a league-low 197 goals and ranked second in the MAAC with 8.88 caused turnovers per game.

Nakrasious was a five-year starter at Temple from 2016-21, where she was a four-year captain for the Owls. She broke the career draw control record with a total of 236 and ranked seventh in program history with 144 ground balls.

She was a two-time all-conference selection, earning All-AAC First Team honors in 2019 and second team recognition in 2021. Nakrasious was a four-time winner of the Devon Marie Lam "T" Means More Award which is given to the person who most exemplifies Temple Lacrosse through selflessness, dedication & desire for team success (2017-20). She was also a winner of the Enterprise Spirit & Sportsmanship Award (2017) & Parliament Award (2019) for the student-athlete who has demonstrated a devotion to the essence of sport through their acts of sportsmanship.

Nakrasious earned both her bachelor's (2020) and master's (2021) degrees from Temple University.

SAMANTHA PRATT



Sam Pratt joined the Delaware women's lacrosse coaching staff as an associate head coach and offensive coordinator in August 2024.

In her first season with the Blue Hens, UD's offense averaged 13.06 goals per game to rank third in the CAA and was second in assists per game (6.25). Delaware led the conference and ranked sixth nationally with a .545 free position percentage, and Morgan Gore set the program record with 13 free position goals. Gore and Delaney McDaniel were named to the All-CAA Second Team while Lulu Rishko earned all-rookie honors.

Pratt came to Delaware after spending six seasons on the coaching staff at Mount St. Mary's. During her tenure, Pratt coached 29 student-athletes to all-league honors between the Northeast Conference (NEC) and the Metro Atlantic Athletic Conference (MAAC). The team posted a 63-35 record and sported a pair of NEC Offensive Players of the Year, an NEC Midfielder of the Year, and a NEC Rookie of the Year. Her offense in 2019 ranked 20th nationally in scoring with 14.11 goals per game. Two years later, the team finished 14th in the country with 15.06 goals per game.

Prior to joining the staff at Mount St. Mary's Pratt spent a season at La Salle where she served as offensive coordinator.

Pratt, then Sam Nolan, was a two-year team captain at UMBC (2013-17). She finished her career with 117 goals and 73 assists for 190 points, graduating as the program's all-time leader in assists, and ranked third in career points. She was a First Team All-America East selection in her final two seasons.

The Fallston, Maryland native earned a pair of degrees from UMBC in sociology (2016) and media and communication (2017). She received a master's degree in sport management from Mount St. Mary's in 2019.

Sam and her husband, Joe, a former UMBC men's soccer player, were married in 2022. The two have a pair of labrador retrievers, Finley & Champion.

LILLY SISKIND



Lilly Siskind joined the Blue Hens after a five-year collegiate career at Old Dominion University, where she set multiple program records and garnered national recognition.

While at ODU, Siskind was a starter in 74 of 80 career games played. She collected 214 points with 149 goals and 65 assists over her five seasons with the program, adding 46 ground balls, 30 draw controls, and 33 caused turnovers.

Nationally, Siskind ranked in the top 10 for most career points in American Athletic Conference (AAC) history. In 2022, she ranked fourth & second in the AAC and 25th & 22nd national for most points and goals, respectively. Additionally, she earned First Team All-AAC in 2022, Second Team All-AAC in 2021, and VaSIDA All-State Second Team in 2021 & 2022.

Siskind left her mark on the ODU program, finishing third in career points, fourth career assists, and fifth in career goals.

Off the field, Siskind completed two bachelor's degrees in marketing and management along with a master's degree in sports management over her five-year tenure at ODU. She picked up an Academic All-District honor this past season as well as recognition from the AAC All-Academic, Conference USA academic honor roll, Big East academic honor roll, and ODU honor roll.

Siskind grew up in West Chester, Pennsylvania where she played lacrosse at Henderson High School. Her father was also a collegiate lacrosse player and spent his career at Towson where he was given All-American status his senior season.

SUPPORT STAFF

Jake Schrum

Tim Morrissey

Kelly Stafford

Dr. Christine Jehu

Sport Administrator

Academic Advisor

Athletic Trainer

Sport Psychologist

Austin Mark

Jack Levis

Brendan Thomas

Ryan Stiles

Team Nutritionist

Equipment Manager

Athletic Communications

Strength & Conditioning Coach

ATLANTIC SUN CONFERENCE

STAFF

Jeff Bacon.....Commissioner
 Kalista Gioglio.....Director / Executive Operations
 Jerome Rodgers.....Deputy Commissioner / COO
 Korinth Patterson.....Exec. Assoc. Comm. / Sport Admin. / SWA
 Kaitlin Parsons.....Senior Assoc. Comm. / External Operations
 Joseph Kaminski.....Senior Assoc. Comm. / Sport Admin.
 Justin Burdette.....Associate Commissioner / CFO
 David Miller.....Assistant Commissioner / Broadcasting
 Elyse Appelblatt.....Assistant Commissioner / Digital Content
 William Hall.....Assistant Commissioner / Sport Administration
 Carl Mattox.....Assistant Commissioner / Sport Administration
 Claire Johnson.....Director / Strategic Communications
 Noah Walter.....Assistant Director / FB and BBall Operations
 Rachel Cumberledge.....Assistant Director / Strategic Comms

2026 PRESEASON TEAM

Preseason Offensive Player of the Year: Kayleen Favreau, Queens

Preseason Defensive Player of the Year: Maggie Cuddy, Jacksonville

Preseason Midfielder of the Year: Katie Colavito, Liberty

Preseason Goalkeeper of the Year: Brookelynn Hodgkin, Jacksonville

2026 Preseason All-ASUN Team

- A - Kayleen Favreau, Queens
 - A - Ainsley Scruggs, Jacksonville
 - A - Ava Rajala, Liberty
 - A - Luci Selander, Lindenwood
 - MF - Katie Colavito, Liberty
 - MF - Abby Moran, Jacksonville
 - MF - Gabrielle Beaudet, Coastal Carolina
 - MF - Allyx Berry, Jacksonville
 - D - Maggie Cuddy, Jacksonville
 - D - Jenna Burrow, Liberty
 - D - Grace Lord, Coastal Carolina
 - D - Savannah Donahue, Queens
 - D - Madeleine Klunder, Liberty
 - GK - Brookelynn Hodgkin, Jacksonville
- * a tie in voting resulted in a 14-person team

2026 PRESEASON POLL

Rank (1st place votes)	Points
1. Liberty (7)	79
2. Jacksonville	63
3. Coastal Carolina	62
4. Delaware (2)	60
5. Lindenwood	44
6. Queens	36
7. Kennesaw State	29
8. Stetson	20
9. Austin Peay	12



2026 ASUN WOMEN'S LACROSSE STANDINGS (as of 4/7)

School	ASUN	PCT.	Home	Away	Overall	PCT.	Home	Away	Neutral	Streak
Delaware	4-0	1.000	2-0	2-0	8-4	.667	5-2	3-2	0-0	W7
Jacksonville	4-1	.800	3-0	1-1	8-4	.667	7-1	1-3	0-0	L1
Queens	3-2	.600	2-0	1-2	3-9	.250	2-4	1-5	0-0	W3
Kennesaw State	2-2	.500	2-0	0-2	7-6	.538	4-2	3-4	0-0	W1
Liberty	2-2	.500	0-2	2-0	4-9	.308	0-8	4-1	0-0	L4
Stetson	2-2	.500	1-1	1-1	2-10	.167	1-5	1-5	0-0	L2
Lindenwood	2-3	.400	1-2	1-1	5-8	.385	3-3	2-5	0-0	W1
Coastal Carolina	1-3	.250	1-0	0-3	8-5	.615	5-0	3-5	0-0	L1
Austin Peay	0-5	.000	0-2	0-3	4-10	.286	2-5	2-5	0-0	L7

2026 ASUN WEEKLY AWARDS

Offensive Player of the Week

- Feb. 9 - Alexandra Horn, Coastal Carolina
- Feb. 17 - Sienna Wyatt, Queens
- Feb. 23 - Maeve Brennan, Jacksonville
- March 2 - Shae Hagans, Jacksonville
- March 9 - Luci Selander, Lindenwood
- March 16 - Lexi Tinker, Kennesaw State
- March 23 - Sophia Nesci, Liberty
- March 30 - Jessica Giller, Jacksonville

Defensive Player of the Week

- Feb. 9 - Grace Lord, Coastal Carolina
- Feb. 17 - Charlotte Sadler, Coastal Carolina
- Feb. 23 - Charlotte Sadler, Coastal Carolina
- March 2 - Maggie Cuddy, Jacksonville
- March 9 - Brynn Delaney, Lindenwood
- March 16 - Charlotte Sadler, Coastal Carolina
- March 23 - Abby Moran, Jacksonville

March 30 - Ella Rishko, Delaware

April 6 - Jaclyn Marszal, Delaware

- April 13
- April 20
- April 27

April 6 - Rachel Hines, Liberty

- April 13
- April 20
- April 27

UNIVERSITY OF DELAWARE

IN THE RANKINGS

The University of Delaware is ranked in the top 1.6% globally, among nearly 21,000 institutions, based on educational quality, employability, faculty quality and research. In late 2024, Wall Street Journal ranked UD at No. 10 among public universities and No. 26 among all U.S. universities based on student professional readiness and career outcomes.

Physical Therapy graduate program
No. 1 in the nation
(U.S. News & World Report)

One of 24 UD graduate programs ranked in the top-100 by U.S. News

Entrepreneurship undergraduate program
No. 3 in the Mid-Atlantic
(The Princeton Review)

Chemical Engineering undergraduate program
No. 4 in the nation
(U.S. News & World Report)

One of six UD undergraduate programs ranked in the top-100 by U.S. News

Chemical Engineering graduate program
No. 8 in the nation
(U.S. News & World Report)

One of 24 UD graduate programs ranked in the top-100 by U.S. News

Online MBA program
No. 20 out of 355 in the nation
(U.S. News & World Report)

Online Master's in Education program
No. 20 out of 313 in the nation
(U.S. News & World Report)

Nursing undergraduate program
No. 40 in the nation
(U.S. News & World Report)
A 34-spot jump from last year's ranking

BEST VALUE

UD ranks among the country's best value propositions, according to U.S. News & World Report, Wall Street Journal, Kiplinger's and Forbes. This summer, The Princeton Review ranked UD among its 209 Best Value Colleges for 2025, earning one of the publication's highest return-on-investment ratings. Money magazine awarded UD 4½ stars out of a possible five in its 2025-26 rating of America's best colleges. The University, according to Money, "stands out for its affordability" as a public college providing an excellent value for in-state students, and is considered one of the Best Colleges in the Northeast.

distinguished history

In 1743, the school that would become the University of Delaware was just a tiny institution, with a graduating class of about a dozen. Three of those graduates – **Thomas McKean**, **George Read** and **James Smith** – would go on to sign the Declaration of Independence; Read would also sign the U.S. Constitution, helping launch a new paradigm of freedom for an entire nation and a beacon of liberty for much of the world.

first in study abroad

In 1923, UD initiated a program to enhance students' learning by giving them an overseas experience. Influenced by the carnage he saw as an ambulance driver in World War I, professor **Raymond Kirkbride** believed that understanding other cultures was critical to promoting peace. His idea would grow into the first study-abroad program in the United States. Today approximately a third of all UD students participate in study abroad programs offered around the world. This year, the University celebrates the 10-year anniversary of its World Scholars Program, through which a cohort of new students experience their first UD semester abroad. These students return to UD for the spring and, as juniors, they can elect one of 40 study-abroad experiences.

introducing ud's new leadership

Interim President **Laura Carlson** and Interim Provost **Bill Farquhar** have been at the helm since July 1. Carlson joined the University of Delaware community in 2022, serving as its chief academic officer when she became the University's 12th Provost. Farquhar has been a faculty member for more than 23 years in UD's Department of Kinesiology and Applied Physiology. He most recently served as the dean of UD's College of Health Sciences.

student applications are climbing

Interest in a University of Delaware education continues to soar. UD received more than 40,000 applications for this year's class of first-year students, setting a UD record for the seventh consecutive year. Over the last year, UD hosted more than 38,000 visitors (prospective students and their families) at open houses and campus tours, and awarded more than \$200 million in financial aid to its newest students.

incorporating ai into curriculum

AI has the potential to reshape higher education. UD has applied this technology in myriad ways and continues to explore further applications for artificial intelligence – including the launch of new academic offerings like an undergraduate major, a graduate degree program and a certificate; the creation of UD's First State AI Institute; and the incorporation of generative AI into curricula.

PROMINENT ALUMNI



joe Biden '65



chris christie '84



joe flacco '08



elena delle donne '13

delaware STARTERS BY GAME

OPPONENT	D	D	D	D	D/M	M	M	M/A	A	A	A	GK
at Temple	Baseggio	L. Stolarick	Matey	Farragher	Radziul	Gore	Sturtevant	Baumgratz	J. Marszal	Porter	E. Rishko	S. Marszal
Rutgers	Baseggio	L. Stolarick	Matey	Farragher	Radziul	Gore	L. Rishko	Baumgratz	Drab	Porter	E. Rishko	S. Marszal
Navy	Baseggio	L. Stolarick	Matey	Farragher	Radziul	L. Rishko	Sturtevant	Baumgratz	J. Marszal	Drab	E. Rishko	S. Marszal
UMBC	Baseggio	L. Stolarick	Matey	Farragher	Radziul	Gore	L. Rishko	Baumgratz	J. Marszal	Muscolino	E. Rishko	S. Marszal
at Georgetown	Baseggio	L. Stolarick	Matey	Farragher	Radziul	Gore	L. Rishko	Baumgratz	J. Marszal	Muscolino	E. Rishko	S. Marszal
at Drexel	Baseggio	L. Stolarick	Matey	Farragher	Radziul	Gore	L. Rishko	Baumgratz	J. Marszal	Muscolino	E. Rishko	S. Marszal
Mount St. Mary's	Baseggio	L. Stolarick	Matey	Farragher	Radziul	Gore	L. Rishko	Baumgratz	J. Marszal	Muscolino	E. Rishko	S. Marszal
at Austin Peay	Baseggio	L. Stolarick	Matey	Farragher	Radziul	Gore	L. Rishko	Baumgratz	J. Marszal	Muscolino	E. Rishko	S. Marszal
at Lindenwood	Baseggio	L. Stolarick	Matey	Farragher	Radziul	Gore	L. Rishko	Baumgratz	J. Marszal	Muscolino	E. Rishko	S. Marszal
Jacksonville	Baseggio	L. Stolarick	Matey	Farragher	Radziul	Gore	Sturtevant	Baumgratz	J. Marszal	Muscolino	E. Rishko	S. Marszal
Stetson	Sturtevant	Reagan	Mi. Didio	Farragher	Gore	E. Rishko	Mercer	Dassoulas	J. Marszal	Drab	Mc. Didio	S. Marszal
Saint Joseph's	Baseggio	L. Stolarick	Matey	Farragher	Radziul	Gore	Sturtevant	Baumgratz	J. Marszal	Muscolino	E. Rishko	S. Marszal
Kennesaw State												
Coastal Carolina												
at Queens												
at Liberty												

delaware STAT LEADERS BY GAME

OPPONENT	GOALS	ASSISTS	POINTS	SOG	GB	CT	DC	SAVES
at Temple	Gore/E. Rishko (3)	Drab/J. Marszal (2)	Drab/Gore/E. Rishko (3)	E. Rishko (6)	Radziul/E. Rishko (3)	Radziul (3)	E. Rishko (9)	S. Marszal (5)
Rutgers	4 players (1)	Drab/J. Marszal (1)	6 players (1)	Porter/E. Rishko (3)	Baseggio (5)	Baseggio/Farragher (4)	4 players (1)	S. Marszal (8)
Navy	E. Rishko (3)	Sturtevant (2)	E. Rishko (3)	E. Rishko (6)	S. Marszal (3)	Farragher/E. Rishko (2)	E. Rishko (9)	S. Marszal (10)
UMBC	E. Rishko (4)	Craytor (2)	E. Rishko (4)	Gore/E. Rishko (6)	Farragher (3)	6 players (1)	Baumgratz/E. Rishko (8)	S. Marszal (10)
at Georgetown	E. Rishko (4)	Muscolino (4)	Muscolino (5)	E. Rishko (4)	Radziul (4)	3 players (2)	E. Rishko (2)	S. Marszal (10)
at Drexel	Sturtevant/E. Rishko (3)	7 players (1)	E. Rishko (4)	Sturtevant (4)	Radziul (4)	Radziul (5)	E. Rishko (4)	S. Marszal (6)
Mount St. Mary's	E. Rishko (4)	Muscolino (5)	E. Rishko (8)	E. Rishko (5)	5 players (2)	3 players (2)	Baumgratz (9)	S. Marszal (8)
at Austin Peay	Gore/J. Marszal (4)	Muscolino (3)	J. Marszal (6)	3 players (5)	6 players (2)	Baseggio (3)	Baumgratz (5)	S. Marszal (4)
at Lindenwood	Buono (5)	J. Marszal (6)	J. Marszal (8)	Buono (5)	Matey (3)	Baseggio/Radziul (2)	Baumgratz (6)	S. Marszal (3)
Jacksonville	Mc. Didio (4)	J. Marszal/Muscolino (3)	Mc. Didio/Muscolino (5)	Mc. Didio (4)	5 players (2)	E. Rishko (4)	E. Rishko (9)	S. Marszal (5)
Stetson	E. Rishko (6)	3 players (1)	E. Rishko (6)	E. Rishko (7)	J. Marszal/L. Stolarick (3)	E. Rishko (4)	E. Rishko (9)	S. Marszal (11)
Saint Joseph's	J. Marszal (4)	J. Marszal (4)	J. Marszal (8)	J. Marszal (4)	E. Rishko/Sturtevant (2)	Matey/E. Rishko (4)	Matey/E. Rishko (5)	S. Marszal (11)
Kennesaw State								
Coastal Carolina								
at Queens								
at Liberty								



delaware

HIGHS AND LOWS

GAME HIGHS**2026****ALTIG ERA**

Goals	25, at Lindenwood (3/21/26)	25, at Lindenwood (3/21/26)
Assists	17, at Lindenwood (3/21/26)	17, at Lindenwood (3/21/26)
Goals in a Quarter	9, at Lindenwood (3/21/26)	9, 3x, last Q3 at Lindenwood (3/21/26)
1H Goals	14, at Austin Peay (3/19/26)	14, at Austin Peay (3/19/26)
2H Goals	16, at Lindenwood (3/21/26)	16, at Lindenwood (3/21/26)
Shots Attempted	50, vs. Stetson (3/28/26)	50, vs. Stetson (3/28/26)
Shots on Goal	30, 2x, last vs. Stetson (3/28/26)	36, vs. Delaware State (2/24/21)
Ground Balls	21, 3x, last vs. Stetson (3/28/26)	33, vs. Lafayette (3/6/24)
Draw Controls	20, vs. Jacksonville (3/26/26)	26, vs. Old Dominion (2/25/23)
Turnovers	22, at Temple (2/6/26)	28, vs. Old Dominion (2/25/23)
Caused Turnovers	16, vs. Rutgers (2/13/26)	26, vs. Lafayette (3/6/24)
Saves	10, 3x, last at Georgetown (3/7/26)	21, at Maryland (3/1/22)
Clears	19, at Georgetown (3/7/26)	27, vs. Lafayette (3/6/24)

GAME LOWS**2026****ALTIG ERA**

Goals	4, vs. Rutgers (2/13/26)	2, at Maryland (3/1/22)
Assists	2, vs. Rutgers (2/13/26)	0, 2x, last at La Salle (2/27/21)
Goals in a Quarter	0, 4x, last Q3 at Georgetown (3/7/26)	0, 21x, last Q3 at Georgetown (3/7/26)
1H Goals	0, vs. Rutgers (2/13/26)	0, 3x, last vs. Rutgers (2/13/26)
2H Goals	3, vs. Navy (2/18/26)	1, 2x, last vs. Stony Brook (5/4/23)
Shots Attempted	20, vs. Navy (2/18/26)	7, at Stony Brook (4/6/24)
Shots on Goal	9, vs. Rutgers (2/13/26)	6, at Stony Brook (4/6/24)
Ground Balls	8, vs. Navy (2/18/26)	6, vs. Temple (2/20/21)
Draw Controls	3, at Georgetown (3/7/26)	3, at Georgetown (3/7/26)
Turnovers	8, vs. Stetson (3/28/26)	8, vs. Stetson (3/28/26)
Caused Turnovers	6, 2x, last vs. UMBC (3/4/26)	2, 2x, last at Stony Brook (3/18/23)
Saves	1, 2x, last vs. Saint Joseph's (4/1/26)	1, 2x, last vs. Saint Joseph's (4/1/26)
Clears	13, 3x, last vs. Stetson (3/28/26)	10, at Monmouth (3/30/25)

PLAYER HIGHS UNDER ALTIG

Goals	6, 2x, last Ella Rishko vs. Stetson, 3/28/26
Assists	7, Delaney McDaniel, vs. Lafayette, 2/15/23
Points	9, Jaclyn Marszal, at William & Mary, 3/30/24
Shots Attempted	13, Mia DeRuggiero, vs. Elon, 3/7/20
Shots on Goal	8, 3x, last Lizzie Hsu, at Hofstra, 4/8/23
Ground Balls	8, Madison Hranicka, vs. Lafayette, 3/6/24
Caused Turnovers	11, Madison Hranicka, vs. Lafayette, 3/6/24
Turnovers	7, Mia DeRuggiero, vs. Duquesne, 3/4/20
Draw Controls	15, Ella Rishko, at Towson, 4/13/25
Saves	18, Kate Brewster, at Rutgers, 2/15/20

opponent

HIGHS AND LOWS

GAME HIGHS**2026****ALTIG ERA**

Goals	15, vs. Navy (2/18/26)	20, 2x, last at Drexel (5/1/25)
Goals in a Quarter	6, Q4, at Temple (2/6/26)	9, Q3 vs. Stony Brook (5/4/23)
1H Goals	9, vs. Navy (2/18/26)	12, 3x, at Drexel (5/1/25)
2H Goals	9, at Temple (2/6/26)	11, 4x, last vs. Stony Brook (5/4/23)
Shots Attempted	30, vs. Navy (2/18/26)	46, vs. Hofstra (4/14/24)
Shots on Goal	21, vs. Navy (2/18/26)	36, at Maryland (3/1/22)
Ground Balls	18, at Temple (2/6/26)	30, vs. William & Mary (4/9/22)
Draw Controls	16, at Georgetown (3/7/26)	28, vs. Georgetown (3/8/25)
Turnovers	22, vs. Rutgers (2/13/26)	34, vs. Lafayette (3/6/24)
Caused Turnovers	15, at Temple (2/6/26)	19, vs. Lafayette (3/6/24)
Saves	14, vs. Stetson (3/28/26)	20, 2x, last at Old Dominion (3/26/22)
Clears	18, at Georgetown (3/7/26)	26, vs. Towson (3/24/24)

GAME LOWS**2026****ALTIG ERA**

Goals	3, at Austin Peay (3/19/26)	3, 2x, last at Austin Peay (3/19/26)
Goals in a Quarter	0, 7x, last Q4 at Lindenwood (3/21/26)	0, 27x, last Q4 at Lindenwood (3/21/26)
1H Goals	0, at Austin Peay (3/19/26)	0, at Austin Peay (3/19/26)
2H Goals	0, vs. Mount St. Mary's (3/14/26)	0, 2x, last vs. Mount St. Mary's (3/14/26)
Shots Attempted	7, at Austin Peay (3/19/26)	7, at Austin Peay (3/19/26)
Shots on Goal	7, 2x, last vs. Stetson (3/28/26)	6, 2x, last vs. Lafayette (3/6/24)
Ground Balls	10, 2x, last at Austin Peay (3/19/26)	6, at Campbell (4/11/25)
Draw Controls	5, vs. Stetson (3/28/26)	2, vs. Towson (3/24/24)
Turnovers	8, vs. Navy (2/18/26)	7, at Stony Brook (3/18/23)
Caused Turnovers	3, at Austin Peay (3/19/26)	2, at Drexel (3/30/22)
Saves	3, at Georgetown (3/7/26)	2, at Stony Brook (4/6/24)
Clears	7, at Lindenwood (3/21/26)	7, 2x, last at Lindenwood (3/21/26)

DELAWARE SINGLE GAME RECORDS

INDIVIDUAL**TEAM**

Goals	11, Ann Pasquariello, vs. Hofstra, 5/12/79	36, vs. Towson State, 4/24/86
Assists	9, 2x, last Mia DeRuggiero vs. Oregon 3/27/19	18, vs. Hofstra, 4/22/90
Points	16, Karen Emas, vs. Bucknell, 4/17/84	49, vs. Towson State, 4/24/86
Shots Attempted	--	65, vs. Towson State, 4/24/86
Shots on Goal	8, 3x, last Lizzie Hsu, at Hofstra, 4/8/23	36, vs. Delaware State, 2/24/21
Ground Balls	17, Lisa Blanc, vs. Lehigh, 5/8/83	88, vs. Bucknell, 4/18/87
Caused Turnovers	11, Madison Hranicka, vs. Lafayette, 3/6/24	26, vs. Lafayette, 3/6/24
Draw Controls	15, Ella Rishko, at Towson, 4/13/25	26, vs. Old Dominion, 2/25/23
Saves	36, Lisa McBeth, at West Chester, 5/5/78	36, vs. West Chester, 5/5/78

LAST TIME A BLUE HEN

Scored 5 goals
Scored 6 goals

Scored 7 goals
Scored 8 goals
Scored 9 goals
Scored 10 or more goals

Tallied 5 assists

Tallied 6 assists

Tallied 7 assists
Tallied 8 assists
Tallied 9 assists

Had 5 points

Had 6 points

Had 7 points

Had 8 points

Had 9 points
Had 10 or more points

Had 5 or more caused turnovers

Had 10 or more caused turnovers

Had 5 or more ground balls

Had 10 or more ground balls

Won 5 or more draw controls

Won 10 or more draw controls

Made 10 or more saves

Made 15 or more saves
Made 20 or more saves

Grayson Buono at Lindenwood, 3/21/26

Ella Rishko vs. Stetson, 3/28/26

N/A

Meghan Mulqueen vs. West Chester, 4/24/90

Casey Lyons at Lafayette, 2/17/15

Anne Wilkinson vs. James Madison, 3/27/86

Sophia Muscolino vs. Mount St. Mary's, 3/14/26

Jaclyn Marszal at Lindenwood, 3/21/26

Delaney McDaniel vs. Lafayette, 2/25/23

Karen Emas vs. Bucknell, 4/17/84

Mia DeRuggiero vs. Oregon, 3/27/19

Sophia Muscolino (3g, 2a) vs. Saint Joseph's, 4/1/26

Ella Rishko (6g) vs. Stetson, 3/28/26

Sophia Muscolino (3g, 4a) at Lindenwood, 3/21/26

Jaclyn Marszal (4g, 4a) vs. Saint Joseph's, 4/1/26

Jaclyn Marszal vs. William & Mary, 3/30/24

Mia DeRuggiero vs. Towson, 4/27/19

Kennedy Radziul (5) at Drexel, 3/11/26

Madison Hranicka (11) vs. Lafayette, 3/6/24

Kat Baseggio (5) vs. Rutgers, 2/13/26

N/A

Mary Matey, Ella Rishko vs. Saint Joseph's, 4/1/26

Ella Rishko vs. Towson, 4/13/25

Steph Marszal (10) at Georgetown, 3/7/26

Mercy McCarthy (16) vs. Stony Brook, 3/18/23

Kate Brewster (20) vs. Temple, 2/8/19

LAST TIME DELAWARE

Scored 15 or more goals

Scored 15 or more goals in back-to-back games

Scored 15 or more goals in 3+ straight games

Scored 20 or more goals

Scored 25 or more goals

Scored 30 or more goals

Allowed 15 or more goals

Allowed 15 or more goals in back-to-back games

Allowed 20 or more goals

Allowed 25 or more goals

Allowed 30 or more goals

Had 10 or more assists

Had 15 or more assists

Won 20 or more draw controls

Won 25 or more draw controls

Scooped 25 or more ground balls

Scooped 30 or more ground balls

Scored 5 or more free-position goals

Recorded a shutout

Held an opponent scoreless for a half

Won in overtime

Lost in overtime

Had 2 players with a hat trick

Had 3 players with a hat trick

vs. Stetson (W, 16-6), 3/28/26

at Austin Peay (W, 19-3), at Lindenwood (W, 25-7), 3/19-21/26

vs. Mount St. Mary's (W, 17-5), at Austin Peay (W, 19-3), at Lindenwood (W, 25-7), 3/14-21/26

vs. Delaware State (W, 20-3), 2/24/21

at Lindenwood (W, 25-7), 3/21/26

vs. Towson State (W, 36-2), 4/24/86

vs. #11/11/10 Navy (L, 15-10), 2/18/26

vs. Hofstra (L, 19-11), at Elon (L, 16-15), 4/14-20/24

vs. Drexel (L, 20-11), 5/1/25

N/A

N/A

at Austin Peay (11), 3/19/26

at Lindenwood (17), 3/21/26

vs. Jacksonville (21), 3/26/26

vs. Old Dominion (26), 2/25/23

vs. Elon (27), 3/7/20

vs. Wagner (32), 3/1/25

at Lindenwood (5), 3/21/26

N/A

at Austin Peay (1st half), 3/19/26

vs. Monmouth (W, 13-12), 3/25/23

at William & Mary (L, 13-12), 4/1/23

McKenzie Didio (4), Morgan Gore (3) vs. Jacksonville, 3/26/26

Jaclyn Marszal (4), Sophia Muscolino (3), Morgan Gore (3) vs. Saint Joseph's, 4/1/26

delaware SEASON STATS

2026 University of Delaware Women's Lacrosse Overall Statistics (as of Apr 1, 2026)

Record:	Overall	Home	Away	Neutral
All Games	8-4	5-2	3-2	0-0
Conference	4-0	2-0	2-0	0-0
Non-Conference	4-4	3-2	1-2	0-0

Date	Opponent	WL	Score	Att.
2/06/26	at Temple	L	10-12	248
2/13/26	RUTGERS	L	4-12	293
2/18/26	NAVY	L	10-15	274
3/04/26	UMBC	W	16-8	219
3/07/26	at Georgetown	L	8-9	617
3/11/26	at Drexel	W	13-6	300
3/14/26	MOUNT ST. MARY'S	W	17-5	563
3/19/26	at Austin Peay	W	19-3	98
3/21/26	at Lindenwood (Mo)	W	25-7	146
3/26/26	JACKSONVILLE	W	14-13	639
3/28/26	STETSON	W	16-6	362
4/01/26	SAINT JOSEPH'S	W	13-12	314

Team Statistics	DELAWARE	OPP
SHOT STATISTICS		
Goals-Shot Att.	165-370	108-235
Goals Per Game	13.75	9.00
Shot Pct.	.446	.460
Shots on Goal-Att.	256-370	179-235
SOG Pct.	.692	.762
Shots/Game	30.8	19.6
Assists	95	68
FREE POSITION OPPORTUNITIES		
Free Position Made-Att.	26-57	25-51
Free Position pct.	.456	.490
GOAL BREAKDOWN		
Total Goals	165	108
Free Position	26	25
Unassisted	70	40
Overtime	0	0
Goals Scored Avg	13.75	9.00
GROUND BALLS	192	167
DRAW CONTROLS	168	122
TURNOVERS	164	189
CAUSED TURNOVERS	127	95
CLEARs	182-204	171-212
Clear Pct.	.892	.807
SHOT CLOCK VIOLATIONS	7	6
ATTENDANCE		
Total	2,664	1,409
Dates-Avg Per Date	7/381	5/282
Neutral Site #-Avg	0/	

#	Player	GP	G	A	PTS	SH	GW	GB	DC	TO	CT	FOULS
32	Rishko, Ella	12	32	9	41	73	0	16	66	23	22	2
8	Marszal, Jaclyn	12	16	23	39	41	1	12	1	25	4	0
14	Muscolino, Sophia	9	15	24	39	35	1	8	0	14	0	0
17	Gore, Morgan	11	21	4	25	42	0	5	12	14	6	4
34	Sturtevant, Riley	12	15	5	20	28	2	10	0	4	10	3
10	Didio, McKenzie	11	16	2	18	29	1	4	0	3	0	0
16	Drab, Callie	12	9	7	16	17	1	7	0	17	0	2
2	Buono, Grayson	11	8	6	14	15	0	2	8	2	5	1
19	Porter, Maggie	12	9	4	13	27	0	4	0	9	4	1
23	Rishko, Lulu	12	9	2	11	33	2	10	6	8	7	2
13	Craytor, Maggie	12	6	3	9	8	0	3	0	4	0	0
33	O'Donnell, Sydney	12	5	1	6	12	0	5	1	3	4	3
7	Ciufo, Julia	9	3	3	6	8	0	4	0	2	2	0
15	MacMurray, Meg	4	1	1	2	1	0	0	0	0	0	0
29	Radziul, Kennedy	12	0	1	1	0	0	25	0	3	21	13
9	Baseggio, Kat	12	0	0	0	0	0	22	0	6	14	11
41	Baumgratz, Molly	12	0	0	0	0	0	0	45	3	3	1
42	Dassoulas, Ellie	1	0	0	0	0	0	0	0	1	0	0
37	Didio, Mia	2	0	0	0	0	0	0	0	0	0	0
28	Farragher, Maggie	12	0	0	0	0	0	14	1	2	11	10
40	Marszal, Steph	12	0	0	0	0	0	16	0	1	1	0
22	Matey, Mary	12	0	0	0	1	0	11	22	5	6	8
21	Mercer, Kate	5	0	0	0	0	0	0	0	1	0	0
11	Reagan, Julia	1	0	0	0	0	0	0	0	0	0	0
18	Stolarick, Lena	12	0	0	0	0	0	14	3	4	7	6
TM	Team	12	0	0	0	0	0	0	3	10	0	1
Totals		12	165	95	260	370	8	192	168	164	127	68
Opponents		12	108	68	176	235	4	167	122	189	95	87

#	Goalie	GP	MIN	GA	GAA	SAVE	PCT	W-L-T
40	Marszal, Steph	12	720:00	108	9.00	71	.397	8-4-0
Totals		12	720:00	108	9.00	71	.397	8-4-0
Opponents		18	720:00	165	13.75	91	.355	4-8-0

Goals by Period	1st	2nd	3rd	4th	Total
Delaware	40	46	34	45	165
Opponents	26	31	25	26	108

Saves by Period	1st	2nd	3rd	4th	Total
Delaware	20	16	15	20	71
Opponents	26	26	22	17	91

Shots by Period	1st	2nd	3rd	4th	Total
Delaware	89	106	85	90	370
Opponents	55	62	59	59	235

Shot on Goal	1st	2nd	3rd	4th	Total
Delaware	60	60	48	51	219
Opponents	39	36	34	36	145

delaware NCAA RANKINGS

Statistic	National Rank	Conference Rank	Value	National Leader	Value	Conference Leader	Value
Assists Per Game (120 ranked)	13	1	7.92	Massachusetts	10.00	Delaware	7.92
Assists Per Game (0 ranked)							
Caused Turnovers Per Game (120 ranked)	23	2	10.58	Liberty	15.92	Liberty	15.92
Clearing Percentage (120 ranked)	45	3	0.892	North Carolina	0.966	Jacksonville	0.915
Draw Control Percentage (120 ranked)	26	2	0.579	Loyola Maryland	0.678	Jacksonville	0.610
Draw Controls Per Game (120 ranked)	31	3	14.00	Dartmouth	17.36	Jacksonville	15.50
Face-Off Win Percentage (0 ranked)							
Fouls Per Game (120 ranked)	36	1	5.67	LIU	1.50	Delaware	5.67
Free Position Percentage (120 ranked)	59	4	0.456	Dartmouth	0.622	Queens (NC)	0.526
Ground Balls Per Game (120 ranked)	45	4	16.00	Wofford	22.15	Liberty	20.15
Points Per Game (120 ranked)	18	1	21.67	North Carolina	28.83	Delaware	21.67
Red Cards (1 ranked)				Brown Longwood	1 1		
Saves Percentage (120 ranked)	92	7	0.397	Maryland	0.529	Coastal Carolina	0.462
Scoring Defense (120 ranked)	22	2	9.00	Colorado	6.64	Coastal Carolina	8.77
Scoring Margin (68 ranked)	19	1	4.75	North Carolina	12.42	Delaware	4.75
Scoring Offense (120 ranked)	24	2	13.75	North Carolina	19.58	Jacksonville	14.00
Shot Percentage (120 ranked)	40	3	0.446	Clemson	0.525	Jacksonville	0.484
Shots Per Game (120 ranked)	16	1	30.83	North Carolina	37.67	Delaware	30.83
Shots on Goal Per Game (120 ranked)	34	2	21.33	North Carolina	28.25	Jacksonville	22.33
Turnovers Per Game (120 ranked)	47	1	13.67	East Carolina	8.45	Delaware	13.67
Win Percentage (118 ranked)	29	1	0.667	Maryland	1.000	Delaware Jacksonville	0.667 0.667
Yellow Cards (120 ranked)	108	8	10	Louisville	30	Kennesaw St.	22

delaware NCAA RANKINGS

Statistic	Player	National Rank	Conference Rank	Value	National Leader	Value	Conference Leader	Value
Assists (134 ranked)	Sophia Muscolino Jaclyn Marszal	37	1	24	Alexa Spallina, Clemson	59	Alexandra Horn, Coastal Carolina Sophia Muscolino, Delaware Ava Rajala, Liberty	24
		44	4	23				24
Assists Per Game (147 ranked)	Sophia Muscolino Jaclyn Marszal	15	1	2.67	Gracin Emerson, Duquesne	4.73	Sophia Muscolino, Delaware	2.67
		41	2	1.92				2.67
Caused Turnovers Per Game (147 ranked)	Ella Rishko Kennedy Radziul	46	4	1.83	Reagan O'Brien, Johns Hopkins	4.67	Lauren Dobbs, Kennesaw St.	2.15
		58	5	1.75				2.15
Draw Controls Per Game (147 ranked)	Ella Rishko Molly Baumgratz	47	4	5.50	Anna Vigilone, Arizona St.	12.92	Abby Moran, Jacksonville	11.08
		90	10	3.75				11.08
Face-Off Win Percentage (0 ranked)								
Free Position Goals Per Game (148 ranked)					Caroline Keil, Denver	1.17	Jessica Giller, Jacksonville	0.92
Free Position Percentage (114 ranked)					Dylan Lyons, Massachusetts	0.846	Jessica Giller, Jacksonville	0.733
Goals (137 ranked)	Ella Rishko	65	3	32	Chloe Humphrey, North Carolina	64	Kayleen Favreau, Queens (NC)	34
Goals Per Game (146 ranked)	Ella Rishko	61	3	2.67	Chloe Humphrey, North Carolina	5.33	Kayleen Favreau, Queens (NC)	3.09
Goals-Against Average (112 ranked)	Steph Marszal	20	2	9.00	Elena Oh, Colorado	6.60	Charlotte Sadler, Coastal Carolina	8.78
Ground Balls Per Game (149 ranked)	Kennedy Radziul	104	8	2.08	Brooke Meltcher, Wofford	5.38	Maddie Eckert, Stetson	2.83
Points (150 ranked)	Ella Rishko Jaclyn Marszal Sophia Muscolino	115	8	41	Chloe Humphrey, North Carolina	92	Luci Selander, Lindenwood	54
		137	11	39				54
		137	11	39				54
Points Per Game (148 ranked)	Sophia Muscolino Ella Rishko Jaclyn Marszal	36	2	4.33	Chloe Humphrey, North Carolina	7.67	Kayleen Favreau, Queens (NC)	4.64
		114	9	3.42				4.64
		136	12	3.25				4.64
Save Percentage (112 ranked)	Steph Marszal	79	5	0.397	JJ Suriano, Maryland	0.530	Charlotte Sadler, Coastal Carolina	0.470
Saves (150 ranked)	Steph Marszal	91	7	71	Haley Richards, Louisville	160	Maddie Eckert, Stetson	119
Saves Per Game (112 ranked)	Steph Marszal	95	7	5.92	Haley Richards, Louisville	12.31	Maddie Eckert, Stetson	9.92
Shot Percentage (148 ranked)	Morgan Gore	91	4	0.500	Emma Raines, Duquesne	0.707	Ainsley Scruggs, Jacksonville	0.619
Shots Per Game (150 ranked)	Ella Rishko	51	2	6.08	Chloe Humphrey, North Carolina	10.17	Kayleen Favreau, Queens (NC)	7.55
Shots on Goal Per Game (148 ranked)	Ella Rishko	61	3	4.25	Chloe Humphrey, North Carolina	7.67	Kayleen Favreau, Queens (NC)	5.18

#1 STELLA STOLARICK | A | SO. | HADDONFIELD, N.J.

CAREER-HIGHS		SEASON-HIGHS	
GOALS	N/A	GOALS	N/A
ASSISTS	N/A	ASSISTS	N/A
POINTS	N/A	POINTS	N/A
SHOTS ON GOAL	N/A	SHOTS ON GOAL	N/A
GROUND BALLS	N/A	GROUND BALLS	N/A
CAUSED TURNOVERS	N/A	CAUSED TURNOVERS	N/A
DRAW CONTROLS	N/A	DRAW CONTROLS	N/A

CAREER STATS								
YEAR	GP/GS	G	A	PTS	SOG	GB	CT	DC
2025	0/0	0	0	0	0	0	0	0
2026	0/0	0	0	0	0	0	0	0
TOTAL	0/0	0	0	0	0	0	0	0

#2 GRAYSON BUONO | A | SO. | WAYNE, PA.

CAREER-HIGHS		SEASON-HIGHS	
GOALS	5, at Lindenwood, 3/21/26	GOALS	5, at Lindenwood, 3/21/26
ASSISTS	2, at Austin Peay, 3/19/26	ASSISTS	2, at Austin Peay, 3/19/26
POINTS	5, at Lindenwood, 3/21/26	POINTS	5, at Lindenwood, 3/21/26
SHOTS ON GOAL	5, at Lindenwood, 3/21/26	SHOTS ON GOAL	5, at Lindenwood, 3/21/26
GROUND BALLS	1, 2x, last vs. Saint Joseph's, 4/1/26	GROUND BALLS	1, 2x, last vs. Saint Joseph's, 4/1/26
CAUSED TURNOVERS	2, at Austin Peay, 3/19/26	CAUSED TURNOVERS	2, at Austin Peay, 3/19/26
DRAW CONTROLS	5, vs. Stony Brook, 3/23/25	DRAW CONTROLS	4, vs. Stetson, 3/28/26

CAREER STATS								
YEAR	GP/GS	G	A	PTS	SOG	GB	CT	DC
2025	13/2	0	0	0	0	0	1	21
2026	11/0	8	6	14	11	2	5	8
TOTAL	24/2	8	6	14	11	2	6	29

#3 LARA HOEFELICH | D | SO. | GLENELG, MD.

CAREER-HIGHS		SEASON-HIGHS	
GOALS	N/A	GOALS	N/A
ASSISTS	N/A	ASSISTS	N/A
POINTS	N/A	POINTS	N/A
SHOTS ON GOAL	N/A	SHOTS ON GOAL	N/A
GROUND BALLS	N/A	GROUND BALLS	N/A
CAUSED TURNOVERS	1, vs. Temple, 2/7/25	CAUSED TURNOVERS	N/A
DRAW CONTROLS	N/A	DRAW CONTROLS	N/A

CAREER STATS								
YEAR	GP/GS	G	A	PTS	SOG	GB	CT	DC
2025	2/0	0	0	0	0	0	1	0
2026	0/0	0	0	0	0	0	0	0
TOTAL	2/0	0	0	0	0	0	1	0

#4 MARIN MOONEY | A | FR. | VILLANOVA, PA.

CAREER-HIGHS		SEASON-HIGHS	
GOALS	N/A	GOALS	N/A
ASSISTS	N/A	ASSISTS	N/A
POINTS	N/A	POINTS	N/A
SHOTS ON GOAL	N/A	SHOTS ON GOAL	N/A
GROUND BALLS	N/A	GROUND BALLS	N/A
CAUSED TURNOVERS	N/A	CAUSED TURNOVERS	N/A
DRAW CONTROLS	N/A	DRAW CONTROLS	N/A

CAREER STATS								
YEAR	GP/GS	G	A	PTS	SOG	GB	CT	DC
2026	0/0	0	0	0	0	0	0	0
TOTAL	0/0	0	0	0	0	0	0	0

#6 JENNY GREEN | D | FR. | GARNET VALLEY, PA.

CAREER-HIGHS		SEASON-HIGHS	
GOALS	N/A	GOALS	N/A
ASSISTS	N/A	ASSISTS	N/A
POINTS	N/A	POINTS	N/A
SHOTS ON GOAL	N/A	SHOTS ON GOAL	N/A
GROUND BALLS	N/A	GROUND BALLS	N/A
CAUSED TURNOVERS	N/A	CAUSED TURNOVERS	N/A
DRAW CONTROLS	N/A	DRAW CONTROLS	N/A

CAREER STATS								
YEAR	GP/GS	G	A	PTS	SOG	GB	CT	DC
2026	0/0	0	0	0	0	0	0	0
TOTAL	0/0	0	0	0	0	0	0	0

#7 JULIA CIUFO | M | JR. | REISTERSTOWN, MD.

CAREER-HIGHS		SEASON-HIGHS	
GOALS	1, 4x, last vs. Stetson, 3/28/26	GOALS	1, 3x, last vs. Stetson, 3/28/26
ASSISTS	1, 3x, last vs. Mount St. Mary's, 3/14/26	ASSISTS	1, 3x, last vs. Mount St. Mary's, 3/14/26
POINTS	2, vs. Mount St. Mary's, 3/14/26	POINTS	2, vs. Mount St. Mary's, 3/14/26
SHOTS ON GOAL	1, 7x, last vs. Stetson, 3/28/26	SHOTS ON GOAL	1, 4x, last vs. Stetson, 3/28/26
GROUND BALLS	3, at Temple, 2/21/24	GROUND BALLS	1, 4x, last at Austin Peay, 3/19/26
CAUSED TURNOVERS	1, 4x, last at Lindenwood, 3/21/26	CAUSED TURNOVERS	1, 2x, last at Lindenwood, 3/21/26
DRAW CONTROLS	N/A	DRAW CONTROLS	N/A

CAREER STATS								
YEAR	GP/GS	G	A	PTS	SOG	GB	CT	DC
2024	4/0	1	0	1	3	4	2	0
2025	0/0	0	0	0	0	0	0	0
2026	9/0	3	3	6	4	4	2	0
TOTAL	13/0	4	3	7	7	8	4	0

#8 JACLYN MARSZAL | A | SR. | CATONSVILLE, MD.

CAREER-HIGHS		SEASON-HIGHS	
GOALS	5, at Lehigh, 2/9/24	GOALS	4, 2x, last vs. Saint Joseph's, 4/1/26
ASSISTS	6, 2x, last at Lindenwood, 3/21/26	ASSISTS	6, at Lindenwood, 3/21/26
POINTS	9, at William & Mary, 3/30/24	POINTS	8, 2x, last vs. Saint Joseph's, 4/1/26
SHOTS ON GOAL	6, 2x, last vs. Drexel, 3/21/25	SHOTS ON GOAL	5, at Austin Peay, 3/19/26
GROUND BALLS	4, 2x, last at Mount St. Mary's, 2/22/25	GROUND BALLS	3, vs. Stetson, 3/28/26
CAUSED TURNOVERS	1, 9x, last vs. Saint Joseph's, 4/1/26	CAUSED TURNOVERS	1, 4x, last vs. Saint Joseph's, 4/1/26
DRAW CONTROLS	1, 3x, last at Lindenwood, 3/21/26	DRAW CONTROLS	1, at Lindenwood, 3/21/26

CAREER STATS								
YEAR	GP/GS	G	A	PTS	SOG	GB	CT	DC
2023*	5/0	2	0	2	3	0	0	0
2024	16/15	25	22	47	36	19	4	2
2025	16/8	21	29	50	44	14	1	0
2026	12/11	16	23	39	26	12	4	1
UD	44/34	62	74	136	106	45	9	3
TOTAL	49/34	64	74	138	109	45	9	3

* at Notre Dame

#9 KAT BASEGGIO | D | JR. | GUILFORD, CONN.

CAREER-HIGHS		SEASON-HIGHS	
GOALS	N/A	GOALS	N/A
ASSISTS	N/A	ASSISTS	N/A
POINTS	N/A	POINTS	N/A
SHOTS ON GOAL	N/A	SHOTS ON GOAL	N/A
GROUND BALLS	5, vs. Rutgers, 2/13/26	GROUND BALLS	5, vs. Rutgers, 2/13/26
CAUSED TURNOVERS	4, 2x, last vs. Rutgers, 2/13/26	CAUSED TURNOVERS	4, vs. Rutgers, 2/13/26
DRAW CONTROLS	1, vs. Princeton, 2/26/25	DRAW CONTROLS	N/A

CAREER STATS								
YEAR	GP/GS	G	A	PTS	SOG	GB	CT	DC
2024	16/15	0	0	0	0	14	5	0
2025	16/16	0	0	0	0	29	23	1
2026	12/11	0	0	0	0	22	14	0
TOTAL	44/42	0	0	0	0	65	42	1

#10 MCKENZIE DIDIO | A | SR. | WESTPORT, CONN.

CAREER-HIGHS		SEASON-HIGHS	
GOALS	4, vs. Jacksonville, 3/26/26	GOALS	4, vs. Jacksonville, 3/26/26
ASSISTS	1, 2x, last vs. Jacksonville, 3/26/26	ASSISTS	1, 2x, last vs. Jacksonville, 3/26/26
POINTS	5, vs. Jacksonville, 3/26/26	POINTS	5, vs. Jacksonville, 3/26/26
SHOTS ON GOAL	5, vs. Old Dominion, 2/25/23	SHOTS ON GOAL	4, vs. Jacksonville, 3/26/26
GROUND BALLS	1, 6x, last vs. Stetson, 3/28/26	GROUND BALLS	1, 4x, last vs. Stetson, 3/28/26
CAUSED TURNOVERS	N/A	CAUSED TURNOVERS	N/A
DRAW CONTROLS	N/A	DRAW CONTROLS	N/A

CAREER STATS								
YEAR	GP/GS	G	A	PTS	SOG	GB	CT	DC
2023	16/1	10	0	10	23	1	0	0
2024	9/0	5	0	5	8	1	0	0
2025	2/0	0	0	0	0	0	0	0
2026	11/1	16	2	18	22	4	0	0
TOTAL	38/2	31	2	33	53	6	0	0

#11 JULIA REAGAN | M | SR. | EAST ATLANTIC BEACH, N.Y.

CAREER-HIGHS		SEASON-HIGHS	
GOALS	N/A	GOALS	N/A
ASSISTS	N/A	ASSISTS	N/A
POINTS	N/A	POINTS	N/A
SHOTS ON GOAL	N/A	SHOTS ON GOAL	N/A
GROUND BALLS	N/A	GROUND BALLS	N/A
CAUSED TURNOVERS	N/A	CAUSED TURNOVERS	N/A
DRAW CONTROLS	N/A	DRAW CONTROLS	N/A
	1, at Denver, 3/13/23		N/A

CAREER STATS								
YEAR	GP/GS	G	A	PTS	SOG	GB	CT	DC
2023	1/0	0	0	0	0	0	0	1
2024	1/0	0	0	0	0	0	0	0
2025	0/0	0	0	0	0	0	0	0
2026	1/1	0	0	0	0	0	0	0
TOTAL	3/1	0	0	0	0	0	0	1

#12 ERIN HUSSEY | M | FR. | SEVERNA PARK, MD.

CAREER-HIGHS		SEASON-HIGHS	
GOALS	N/A	GOALS	N/A
ASSISTS	N/A	ASSISTS	N/A
POINTS	N/A	POINTS	N/A
SHOTS ON GOAL	N/A	SHOTS ON GOAL	N/A
GROUND BALLS	N/A	GROUND BALLS	N/A
CAUSED TURNOVERS	N/A	CAUSED TURNOVERS	N/A
DRAW CONTROLS	N/A	DRAW CONTROLS	N/A

CAREER STATS								
YEAR	GP/GS	G	A	PTS	SOG	GB	CT	DC
2026	0/0	0	0	0	0	0	0	0
TOTAL	0/0	0	0	0	0	0	0	0

#13 MAGGIE CRAYTOR | A | SO. | CHARLOTTESVILLE, VA.

CAREER-HIGHS		SEASON-HIGHS	
GOALS	3, 2x, last at Lindenwood, 3/21/26	GOALS	3, at Lindenwood, 3/21/26
ASSISTS	2, vs. UMBC, 3/4/26	ASSISTS	2, vs. UMBC, 3/4/26
POINTS	4, at Lindenwood, 3/21/26	POINTS	4, at Lindenwood, 3/21/26
SHOTS ON GOAL	3, 3x, last at Lindenwood, 3/21/26	SHOTS ON GOAL	3, at Lindenwood, 3/21/26
GROUND BALLS	2, at Austin Peay, 3/19/26	GROUND BALLS	2, at Austin Peay, 3/19/26
CAUSED TURNOVERS	1, vs. Temple, 2/7/25	CAUSED TURNOVERS	N/A
DRAW CONTROLS	N/A	DRAW CONTROLS	N/A

CAREER STATS								
YEAR	GP/GS	G	A	PTS	SOG	GB	CT	DC
2025	7/0	5	0	5	10	1	1	0
2026	12/0	6	3	9	7	3	0	0
TOTAL	19/0	11	3	14	17	4	1	0

#14 SOPHIA MUSCOLINO | A | JR. | BALDWINVILLE, N.Y.**CAREER-HIGHS**

GOALS

3, 2x, last vs. Saint Joseph's, 4/1/26

ASSISTS

5, vs. Mount St. Mary's, 3/14/26

POINTS

7, 2x, last at Lindenwood, 3/21/26

SHOTS ON GOAL

5, vs. Stetson, 3/28/26

GROUND BALLS

2, 3x, last vs. Stetson, 3/28/26

CAUSED TURNOVERS

N/A

DRAW CONTROLS

N/A

SEASON-HIGHS

GOALS

3, 2x, last vs. Saint Joseph's, 4/1/26

ASSISTS

5, vs. Mount St. Mary's, 3/14/26

POINTS

7, 2x, last at Lindenwood, 3/21/26

SHOTS ON GOAL

5, vs. Stetson, 3/28/26

GROUND BALLS

2, 3x, last vs. Stetson, 3/28/26

CAUSED TURNOVERS

N/A

DRAW CONTROLS

N/A

CAREER STATS

YEAR	GP/GS	G	A	PTS	SOG	GB	CT	DC
2024	8/0	2	1	3	2	2	0	0
2025	10/0	2	0	2	4	1	0	0
2026	9/8	15	24	39	24	8	0	0
TOTAL	27/8	19	25	44	30	11	0	0

#15 MEG MACMURRAY | A | SO. | CHESTER SPRINGS, PA.**CAREER-HIGHS**

GOALS

1, at Lindenwood, 3/21/26

ASSISTS

1, at Austin Peay, 3/19/26

POINTS

1, 2x, last at Lindenwood, 3/21/26

SHOTS ON GOAL

1, at Lindenwood, 3/21/26

GROUND BALLS

N/A

CAUSED TURNOVERS

N/A

DRAW CONTROLS

N/A

SEASON-HIGHS

GOALS

1, at Lindenwood, 3/21/26

ASSISTS

1, at Austin Peay, 3/19/26

POINTS

1, 2x, last at Lindenwood, 3/21/26

SHOTS ON GOAL

1, at Lindenwood, 3/21/26

GROUND BALLS

N/A

CAUSED TURNOVERS

N/A

DRAW CONTROLS

N/A

CAREER STATS

YEAR	GP/GS	G	A	PTS	SOG	GB	CT	DC
2025 *	0/0	0	0	0	0	0	0	0
2026	4/0	1	1	2	1	0	0	0
UD	4/0	1	1	2	1	0	0	0
TOTAL	4/0	1	1	2	1	0	0	0

* AT MARYLAND

#16 CALLIE DRAB | A | SR. | SUFFERN, N.Y.**CAREER-HIGHS**

GOALS

3, 2x, last vs. Wagner, 3/1/25

ASSISTS

3, at William & Mary, 3/30/24

POINTS

5, at UMBC, 3/5/25

SHOTS ON GOAL

4, 2x, last vs. Georgetown, 3/8/25

GROUND BALLS

3, 2x, last vs. Wagner, 3/1/25

CAUSED TURNOVERS

1, 4x, last vs. Wagner, 3/1/25

DRAW CONTROLS

N/A

SEASON-HIGHS

GOALS

2, 2x, last vs. Saint Joseph's, 4/1/26

ASSISTS

2, at Temple, 2/7/26

POINTS

3, 2x, last vs. Saint Joseph's, 4/1/26

SHOTS ON GOAL

2, 3x, last vs. Saint Joseph's, 4/1/26

GROUND BALLS

2, at Austin Peay, 3/19/26

CAUSED TURNOVERS

N/A

DRAW CONTROLS

N/A

CAREER STATS

YEAR	GP/GS	G	A	PTS	SOG	GB	CT	DC
2023	3/0	1	0	1	2	0	0	0
2024	16/0	13	9	22	17	7	2	0
2025	16/8	13	11	24	23	7	2	0
2026	12/3	9	7	16	11	7	0	0
TOTAL	47/11	36	27	63	53	21	4	0

#17 MORGAN GORE | M | SR. | CROFTON, MD.**CAREER-HIGHS**

GOALS

4, 2x, last at Austin Peay, 3/19/26

ASSISTS

1, 1lx, last vs. Stetson, 3/28/26

POINTS

5, 2x, last at Austin Peay, 3/19/26

SHOTS ON GOAL

6, vs. UMBC, 3/4/26

GROUND BALLS

4, at Monmouth, 3/30/25

CAUSED TURNOVERS

2, 7x, last vs. Stetson, 3/28/26

DRAW CONTROLS

5, at Temple, 2/7/26

SEASON-HIGHS

GOALS

4, at Austin Peay, 3/19/26

ASSISTS

1, 4x, last vs. Stetson, 3/28/26

POINTS

5, at Austin Peay, 3/19/26

SHOTS ON GOAL

6, vs. UMBC, 3/4/26

GROUND BALLS

1, 4x, last vs. Stetson, 3/28/26

CAUSED TURNOVERS

2, 2x, last vs. Stetson, 3/28/26

DRAW CONTROLS

5, at Temple, 2/7/26

CAREER STATS

YEAR	GP/GS	G	A	PTS	SOG	GB	CT	DC
2023	16/1	15	4	19	19	11	2	9
2024	16/15	17	1	18	29	8	5	14
2025	16/15	30	2	32	43	20	10	15
2026	11/11	21	4	25	30	5	6	12
TOTAL	59/42	83	11	94	121	44	23	50

#18 LENA STOLARICK | D | SO. | HADDONFIELD, N.J.

CAREER-HIGHS		SEASON-HIGHS	
GOALS	N/A	GOALS	N/A
ASSISTS	N/A	ASSISTS	N/A
POINTS	N/A	POINTS	N/A
SHOTS ON GOAL	N/A	SHOTS ON GOAL	N/A
GROUND BALLS	4, vs. Princeton, 2/26/25	GROUND BALLS	3, vs. Stetson, 3/28/26
CAUSED TURNOVERS	3, vs. Princeton, 2/26/25	CAUSED TURNOVERS	2, at Drexel, 3/11/26
DRAW CONTROLS	2, at Towson, 4/13/25	DRAW CONTROLS	1, 3x, last vs. Stetson, 3/28/26

CAREER STATS								
YEAR	GP/GS	G	A	PTS	SOG	GB	CT	DC
2025	13/4	0	0	0	0	10	8	3
2026	12/11	0	0	0	0	14	7	3
TOTAL	25/15	0	0	0	0	24	15	6

#19 MAGGIE PORTER | A | FR. | STEVENSON, MD.

CAREER-HIGHS		SEASON-HIGHS	
GOALS	2, at Lindenwood, 3/21/26	GOALS	2, at Lindenwood, 3/21/26
ASSISTS	1, 4x, last vs. Saint Joseph's, 4/1/26	ASSISTS	1, 4x, last vs. Saint Joseph's, 4/1/26
POINTS	2, 2x, last at Lindenwood, 3/21/26	POINTS	2, 2x, last at Lindenwood, 3/21/26
SHOTS ON GOAL	3, vs. Rutgers, 2/13/26	SHOTS ON GOAL	3, vs. Rutgers, 2/13/26
GROUND BALLS	2, vs. Stetson, 3/28/26	GROUND BALLS	2, vs. Stetson, 3/28/26
CAUSED TURNOVERS	2, vs. Mount St. Mary's, 3/14/26	CAUSED TURNOVERS	2, vs. Mount St. Mary's, 3/14/26
DRAW CONTROLS	N/A	DRAW CONTROLS	N/A

CAREER STATS								
YEAR	GP/GS	G	A	PTS	SOG	GB	CT	DC
2026	12/2	9	4	13	18	4	4	0
TOTAL	12/2	9	4	13	18	4	4	0

#20 SAM PARADISE | M | JR. | PERRY HALL, MD.

CAREER-HIGHS		SEASON-HIGHS	
GOALS	4, vs. Georgetown, 3/8/25	GOALS	N/A
ASSISTS	2, vs. Temple, 2/7/25	ASSISTS	N/A
POINTS	4, vs. Georgetown, 3/8/25	POINTS	N/A
SHOTS ON GOAL	4, 3x, last vs. Georgetown, 3/8/25	SHOTS ON GOAL	N/A
GROUND BALLS	2, vs. Georgetown, 3/8/25	GROUND BALLS	N/A
CAUSED TURNOVERS	2, 2x, last vs. Georgetown, 3/8/25	CAUSED TURNOVERS	N/A
DRAW CONTROLS	9, vs. Temple, 2/7/25	DRAW CONTROLS	N/A

CAREER STATS								
YEAR	GP/GS	G	A	PTS	SOG	GB	CT	DC
2024	16/3	8	0	8	13	6	4	11
2025	9/9	12	2	14	21	5	4	29
2026	0/0	0	0	0	0	0	0	0
TOTAL	25/12	20	2	22	34	11	8	40

#21 KATE MERCER | D | SR. | KATONAH, N.Y.

CAREER-HIGHS		SEASON-HIGHS	
GOALS	N/A	GOALS	N/A
ASSISTS	N/A	ASSISTS	N/A
POINTS	N/A	POINTS	N/A
SHOTS ON GOAL	N/A	SHOTS ON GOAL	N/A
GROUND BALLS	N/A	GROUND BALLS	N/A
CAUSED TURNOVERS	N/A	CAUSED TURNOVERS	N/A
DRAW CONTROLS	3, 2x, last vs. Georgetown, 3/8/25	DRAW CONTROLS	N/A

CAREER STATS								
YEAR	GP/GS	G	A	PTS	SOG	GB	CT	DC
2023	2/0	0	0	0	0	0	0	0
2024	4/0	0	0	0	0	0	0	0
2025	7/0	0	0	0	0	0	0	8
2026	5/1	0	0	0	0	0	0	0
TOTAL	18/1	0	0	0	0	0	0	8

#22 MARY MATEY | D | JR. | PHOENIXVILLE, PA.

CAREER-HIGHS		SEASON-HIGHS	
GOALS	N/A	GOALS	N/A
ASSISTS	N/A	ASSISTS	N/A
POINTS	N/A	POINTS	N/A
SHOTS ON GOAL	N/A	SHOTS ON GOAL	N/A
GROUND BALLS	3, at Lindenwood, 3/21/26	GROUND BALLS	3, at Lindenwood, 3/21/26
CAUSED TURNOVERS	3, vs. Saint Joseph's, 4/1/26	CAUSED TURNOVERS	3, vs. Saint Joseph's, 4/1/26
DRAW CONTROLS	5, 2x, last vs. Saint Joseph's, 4/1/26	DRAW CONTROLS	5, 2x, last vs. Saint Joseph's, 4/1/26

CAREER STATS								
YEAR	GP/GS	G	A	PTS	SOG	GB	CT	DC
2024	0/0	0	0	0	0	0	0	0
2025	7/1	0	0	0	0	0	1	0
2026	12/11	0	0	0	0	11	6	22
TOTAL	19/12	0	0	0	0	11	7	22

#23 LULU RISHKO | M | SO. | REHOBOTH BEACH, DEL.

CAREER-HIGHS		SEASON-HIGHS	
GOALS	2, 5x, last vs. Mount St. Mary's, 3/14/26	GOALS	2, 3x, last vs. Mount St. Mary's, 3/14/26
ASSISTS	1, 5x, last vs. UMBC, 3/4/26	ASSISTS	1, vs. UMBC, 3/4/26
POINTS	3, 2x, last vs. UMBC, 3/4/26	POINTS	3, vs. UMBC, 3/4/26
SHOTS ON GOAL	4, 2x, last vs. Mount St. Mary's, 3/14/26	SHOTS ON GOAL	4, 2x, last vs. Mount St. Mary's, 3/14/26
GROUND BALLS	4, at Monmouth, 3/30/25	GROUND BALLS	2, 3x, last at Drexel, 3/11/26
CAUSED TURNOVERS	2, 2x, last vs. Rutgers, 2/13/26	CAUSED TURNOVERS	2, vs. Rutgers, 2/13/26
DRAW CONTROLS	1, 6x, last vs. Jacksonville, 3/26/26	DRAW CONTROLS	1, 6x, last vs. Jacksonville, 3/26/26

CAREER STATS								
YEAR	GP/GS	G	A	PTS	SOG	GB	CT	DC
2025	14/0	7	4	11	10	13	7	0
2026	12/8	9	2	11	20	10	7	6
TOTAL	26/8	16	6	22	30	23	14	6

#24 KYLIE O'BRIEN | D | SO. | BERWYN, PA.

CAREER-HIGHS		SEASON-HIGHS	
GOALS	N/A	GOALS	N/A
ASSISTS	N/A	ASSISTS	N/A
POINTS	N/A	POINTS	N/A
SHOTS ON GOAL	N/A	SHOTS ON GOAL	N/A
GROUND BALLS	N/A	GROUND BALLS	N/A
CAUSED TURNOVERS	N/A	CAUSED TURNOVERS	N/A
DRAW CONTROLS	N/A	DRAW CONTROLS	N/A

CAREER STATS								
YEAR	GP/GS	G	A	PTS	SOG	GB	CT	DC
2025	0/0	0	0	0	0	0	0	0
2026	0/0	0	0	0	0	0	0	0
TOTAL	0/0	0	0	0	0	0	0	0

#25 AMANDA GAZELLE | M | FR. | ODENTON, MD.

CAREER-HIGHS		SEASON-HIGHS	
GOALS	N/A	GOALS	N/A
ASSISTS	N/A	ASSISTS	N/A
POINTS	N/A	POINTS	N/A
SHOTS ON GOAL	N/A	SHOTS ON GOAL	N/A
GROUND BALLS	N/A	GROUND BALLS	N/A
CAUSED TURNOVERS	N/A	CAUSED TURNOVERS	N/A
DRAW CONTROLS	N/A	DRAW CONTROLS	N/A

CAREER STATS								
YEAR	GP/GS	G	A	PTS	SOG	GB	CT	DC
2026	0/0	0	0	0	0	0	0	0
TOTAL	0/0	0	0	0	0	0	0	0

#26 ALISON SWARTOUT | M | SR. | CHARLOTTESVILLE, VA.

CAREER-HIGHS	SEASON-HIGHS
GOALS 1, vs. Campbell, 4/12/24	GOALS N/A
ASSISTS N/A	ASSISTS N/A
POINTS 1, vs. Campbell, 4/12/24	POINTS N/A
SHOTS ON GOAL 1, 3x, last vs. Campbell, 4/12/24	SHOTS ON GOAL N/A
GROUND BALLS 1, 2x, last vs. Monmouth, 4/27/24	GROUND BALLS N/A
CAUSED TURNOVERS N/A	CAUSED TURNOVERS N/A
DRAW CONTROLS 1, vs. Kent State, 2/25/24	DRAW CONTROLS N/A

CAREER STATS								
YEAR	GP/GS	G	A	PTS	SOG	GB	CT	DC
2023	2/0	0	0	0	0	0	0	0
2024	13/0	1	0	1	3	2	0	1
2025	0/0	0	0	0	0	0	0	0
2026	0/0	0	0	0	0	0	0	0
TOTAL	15/0	1	0	1	3	2	0	1

#27 MADDY MOBILIA | D | JR. | NEW ROCHELLE, N.Y.

CAREER-HIGHS	SEASON-HIGHS
GOALS N/A	GOALS N/A
ASSISTS N/A	ASSISTS N/A
POINTS N/A	POINTS N/A
SHOTS ON GOAL N/A	SHOTS ON GOAL N/A
GROUND BALLS 4, 2x, last vs. Georgetown, 3/8/25	GROUND BALLS N/A
CAUSED TURNOVERS 3, vs. Temple, 2/7/25	CAUSED TURNOVERS N/A
DRAW CONTROLS 2, vs. Georgetown, 3/8/25	DRAW CONTROLS N/A

CAREER STATS								
YEAR	GP/GS	G	A	PTS	SOG	GB	CT	DC
2024	16/15	0	0	0	0	12	8	2
2025	16/16	0	0	0	0	16	16	5
2026	0/0	0	0	0	0	0	0	0
TOTAL	32/31	0	0	0	0	28	24	7

#28 MAGGIE FARRAGHER | D | SR. | EVANSTON, ILL.

CAREER-HIGHS	SEASON-HIGHS
GOALS N/A	GOALS N/A
ASSISTS N/A	ASSISTS N/A
POINTS N/A	POINTS N/A
SHOTS ON GOAL N/A	SHOTS ON GOAL N/A
GROUND BALLS 3, 4x, last vs. UMBC, 3/4/26	GROUND BALLS 3, vs. UMBC, 3/4/26
CAUSED TURNOVERS 4, vs. Rutgers, 2/13/26	CAUSED TURNOVERS 4, vs. Rutgers, 2/13/26
DRAW CONTROLS 4, vs. Lafayette, 2/15/23	DRAW CONTROLS 1, vs. Navy 2/18/26

CAREER STATS								
YEAR	GP/GS	G	A	PTS	SOG	GB	CT	DC
2023	11/1	0	0	0	0	0	1	12
2024	16/15	0	0	0	0	12	13	3
2025	15/15	0	0	0	0	20	13	0
2026	12/12	0	0	0	0	14	11	1
TOTAL	54/43	0	0	0	0	46	38	16

#29 KENNEDY RADZIUL | D | SO. | NORTHPORT, N.Y.

CAREER-HIGHS	SEASON-HIGHS
GOALS N/A	GOALS N/A
ASSISTS 1, at Lindenwood, 3/21/26	ASSISTS 1, at Lindenwood, 3/21/26
POINTS 1, at Lindenwood, 3/21/26	POINTS 1, at Lindenwood, 3/21/26
SHOTS ON GOAL N/A	SHOTS ON GOAL N/A
GROUND BALLS 4, 4x, last at Drexel, 3/11/26	GROUND BALLS 4, 3x, last at Drexel, 3/11/26
CAUSED TURNOVERS 5, at Drexel, 3/11/26	CAUSED TURNOVERS 5, at Drexel, 3/11/26
DRAW CONTROLS 1, vs. Wagner, 3/1/25	DRAW CONTROLS N/A

CAREER STATS								
YEAR	GP/GS	G	A	PTS	SOG	GB	CT	DC
2025	15/11	0	0	0	0	20	12	1
2026	12/11	0	1	1	0	25	21	0
TOTAL	27/22	0	1	1	0	45	33	1

#30 MARINA MERSCH | GK | FR. | MEDIA, PA.

CAREER-HIGHS		SEASON-HIGHS	
FEWEST GOALS ALLOWED [^]	N/A	FEWEST GOALS ALLOWED [^]	N/A
SAVES	N/A	SAVES	N/A
SHOTS FACED	N/A	SHOTS FACED	N/A
SAVE PERCENTAGE [^]	N/A	SAVE PERCENTAGE [^]	N/A

^ MIN. 30 MINUTES PLAYED

CAREER STATS							
YEAR	GP/GS	W-L	GA	GAA	SV	SF	SV%
2026	0/0	0-0	0	0.00	0	0	.000
TOTAL	0/0	0-0	0	0.00	0	0	.000

#31 MADDIE GEORGE | GK | SO. | CENTREVILLE, MD.

CAREER-HIGHS		SEASON-HIGHS	
FEWEST GOALS ALLOWED [^]	N/A	FEWEST GOALS ALLOWED [^]	N/A
SAVES	N/A	SAVES	N/A
SHOTS FACED	N/A	SHOTS FACED	N/A
SAVE PERCENTAGE [^]	N/A	SAVE PERCENTAGE [^]	N/A

^ MIN. 30 MINUTES PLAYED

CAREER STATS							
YEAR	GP/GS	W-L	GA	GAA	SV	SF	SV%
2025	0/0	0-0	0	0.00	0	0	.000
2026	0/0	0-0	0	0.00	0	0	.000
TOTAL	0/0	0-0	0	0.00	0	0	.000

#32 ELLA RISHKO | A | SR. | REHOBOTH BEACH, DEL.

CAREER-HIGHS		SEASON-HIGHS	
GOALS	7, 2x, last vs. Pittsburgh, 4/23/23	GOALS	6, vs. Stetson, 3/28/26
ASSISTS	4, vs. Mount St. Mary's, 3/14/26	ASSISTS	4, vs. Mount St. Mary's, 3/14/26
POINTS	8, 2x, last vs. Mount St. Mary's, 3/14/26	POINTS	8, vs. Mount St. Mary's, 3/14/26
SHOTS ON GOAL	9, vs. Louisville, 4/8/23	SHOTS ON GOAL	7, vs. Stetson, 3/28/26
GROUND BALLS	4, vs. Pittsburgh, 4/23/23	GROUND BALLS	3, at Temple, 2/7/26
CAUSED TURNOVERS	4, 3x, last vs. Stetson, 3/28/26	CAUSED TURNOVERS	4, 2x, last vs. Stetson, 3/28/26
DRAW CONTROLS	15, at Towson, 4/13/25	DRAW CONTROLS	9, 4x, last vs. Stetson, 3/28/26

CAREER STATS								
YEAR	GP/GS	G	A	PTS	SOG	GB	CT	DC
2023 *	18/16	44	6	50	68	18	12	22
2024 *	14/8	17	8	25	34	14	7	16
2025	16/16	36	9	45	65	16	14	55
2026	12/12	32	9	49	42	16	22	66
UD	28/28	68	18	94	107	32	36	121
TOTAL	60/52	129	32	161	209	64	55	159

* AT VIRGINIA TECH

#33 SYDNEY O'DONNELL | M | SO. | DOWNINGTOWN, PA.

CAREER-HIGHS		SEASON-HIGHS	
GOALS	2, at Lindenwood, 3/21/26	GOALS	2, at Lindenwood, 3/21/26
ASSISTS	1, at Drexel, 3/11/26	ASSISTS	1, at Drexel, 3/11/26
POINTS	2, 2x, last at Lindenwood, 3/21/26	POINTS	2, 2x, last at Lindenwood, 3/21/26
SHOTS ON GOAL	2, 2x, last at Lindenwood, 3/21/26	SHOTS ON GOAL	2, 2x, last at Lindenwood, 3/21/26
GROUND BALLS	1, 5x, last vs. Saint Joseph's, 4/1/26	GROUND BALLS	1, 5x, last vs. Saint Joseph's, 4/1/26
CAUSED TURNOVERS	3, vs. Rutgers, 2/13/26	CAUSED TURNOVERS	3, vs. Rutgers, 2/13/26
DRAW CONTROLS	1, vs. Saint Joseph's, 4/1/26	DRAW CONTROLS	1, vs. Saint Joseph's, 4/1/26

CAREER STATS								
YEAR	GP/GS	G	A	PTS	SOG	GB	CT	DC
2025	0/0	0	0	0	0	0	0	0
2026	12/0	5	1	6	7	5	4	1
TOTAL	12/0	5	1	6	7	5	4	1

#34 RILEY STURTEVANT | M | SR. | SPRINGFIELD, VA.

CAREER-HIGHS	SEASON-HIGHS
GOALS 3, 2x, last at Lindenwood, 3/21/26	GOALS 3, 2x, last at Lindenwood, 3/21/26
ASSISTS 2, 2x, last at Lindenwood, 3/21/26	ASSISTS 2, 2x, last at Lindenwood, 3/21/26
POINTS 5, at Lindenwood, 3/21/26	POINTS 5, at Lindenwood, 3/21/26
SHOTS ON GOAL 4, 2x, last vs. Stetson, 3/28/26	SHOTS ON GOAL 4, 2x, last vs. Stetson, 3/28/26
GROUND BALLS 3, 2x, last at Drexel, 3/11/26	GROUND BALLS 3, at Drexel, 3/11/26
CAUSED TURNOVERS 2, 2x, last vs. Mount St. Mary's, 3/14/26	CAUSED TURNOVERS 2, 2x, last vs. Mount St. Mary's, 3/14/26
DRAW CONTROLS N/A	DRAW CONTROLS N/A

CAREER STATS								
YEAR	GP/GS	G	A	PTS	SOG	GB	CT	DC
2023	0/0	0	0	0	0	0	0	0
2024	8/0	2	0	2	4	2	0	0
2025	16/9	13	2	15	19	11	6	0
2026	12/5	15	5	20	24	10	10	0
TOTAL	36/14	30	7	37	47	23	16	0

#35 NICHELLE DESBORDES | D | SO. | ELLICOTT CITY, MD.

CAREER-HIGHS	SEASON-HIGHS
GOALS N/A	GOALS N/A
ASSISTS N/A	ASSISTS N/A
POINTS N/A	POINTS N/A
SHOTS ON GOAL N/A	SHOTS ON GOAL N/A
GROUND BALLS N/A	GROUND BALLS N/A
CAUSED TURNOVERS N/A	CAUSED TURNOVERS N/A
DRAW CONTROLS N/A	DRAW CONTROLS N/A

CAREER STATS								
YEAR	GP/GS	G	A	PTS	SOG	GB	CT	DC
2025	0/0	0	0	0	0	0	0	0
2026	0/0	0	0	0	0	0	0	0
TOTAL	0/0	0	0	0	0	0	0	0

#37 MIA DIDIO | D | SR. | WESTPORT, CONN.

CAREER-HIGHS	SEASON-HIGHS
GOALS N/A	GOALS N/A
ASSISTS N/A	ASSISTS N/A
POINTS N/A	POINTS N/A
SHOTS ON GOAL N/A	SHOTS ON GOAL N/A
GROUND BALLS N/A	GROUND BALLS N/A
CAUSED TURNOVERS N/A	CAUSED TURNOVERS N/A
DRAW CONTROLS N/A	DRAW CONTROLS N/A

CAREER STATS								
YEAR	GP/GS	G	A	PTS	SOG	GB	CT	DC
2023	1/0	0	0	0	0	0	0	0
2024	0/0	0	0	0	0	0	0	0
2025	0/0	0	0	0	0	0	0	0
2026	2/1	0	0	0	0	0	0	0
TOTAL	3/1	0	0	0	0	0	0	0

#38 SADIE SCHULTZ | M | FR. | RIVERHEAD, N.Y.

CAREER-HIGHS	SEASON-HIGHS
GOALS N/A	GOALS N/A
ASSISTS N/A	ASSISTS N/A
POINTS N/A	POINTS N/A
SHOTS ON GOAL N/A	SHOTS ON GOAL N/A
GROUND BALLS N/A	GROUND BALLS N/A
CAUSED TURNOVERS N/A	CAUSED TURNOVERS N/A
DRAW CONTROLS N/A	DRAW CONTROLS N/A

CAREER STATS								
YEAR	GP/GS	G	A	PTS	SOG	GB	CT	DC
2026	0/0	0	0	0	0	0	0	0
TOTAL	0/0	0	0	0	0	0	0	0

#40 STEPH MARSZAL | GK | SR. | CATONSVILLE, MD.

CAREER-HIGHS	
FEWEST GOALS ALLOWED [^]	1, vs. Lafayette, 3/6/24
SAVES	14, at Lehigh, 2/9/24
SHOTS FACED	35 vs. Princeton, 2/26/25
SAVE PERCENTAGE [^]	.667, 4x, last at Wagner, 3/9/24

SEASON-HIGHS	
FEWEST GOALS ALLOWED [^]	3, at Austin Peay, 3/19/26
SAVES	10, 3x, last at Georgetown, 3/7/26
SHOTS FACED	30, vs. Navy, 2/18/26
SAVE PERCENTAGE [^]	.615, vs. Mount St. Mary's, 3/14/26

[^] MIN. 30 MINUTES PLAYED

CAREER STATS							
YEAR	GP/GS	W-L	GA	GAA	SV	SF	SV%
2023	0/0	0-0	0	0.00	0	0	.000
2024	13/12	7-5	97	10.12	93	253	.489
2025	14/13	8-5	154	11.65	106	363	.408
2026	12/12	8-4	108	9.00	71	235	.397
TOTAL	39/37	23-14	359	10.31	270	851	.429

#41 MOLLY BAUMGRATZ | M | JR. | CHARLOTTE, N.C.

CAREER-HIGHS	
GOALS	N/A
ASSISTS	N/A
POINTS	N/A
SHOTS ON GOAL	N/A
GROUND BALLS	N/A
CAUSED TURNOVERS	1, 3x, last vs. Jacksonville, 3/26/26
DRAW CONTROLS	9, vs. Mount St. Mary's, 3/14/26

SEASON-HIGHS	
GOALS	N/A
ASSISTS	N/A
POINTS	N/A
SHOTS ON GOAL	N/A
GROUND BALLS	N/A
CAUSED TURNOVERS	1, 3x, last vs. Jacksonville, 3/26/26
DRAW CONTROLS	9, vs. Mount St. Mary's, 3/14/26

CAREER STATS								
YEAR	GP/GS	G	A	PTS	SOG	GB	CT	DC
2024	0/0	0	0	0	0	0	0	0
2025	12/5	0	0	0	0	0	0	14
2026	12/11	0	0	0	0	0	3	45
TOTAL	24/16	0	0	0	0	0	3	59

#42 ELLIE DASSOULAS | A | SR. | TOWSON, MD.

CAREER-HIGHS	
GOALS	N/A
ASSISTS	N/A
POINTS	N/A
SHOTS ON GOAL	N/A
GROUND BALLS	N/A
CAUSED TURNOVERS	N/A
DRAW CONTROLS	N/A

SEASON-HIGHS	
GOALS	N/A
ASSISTS	N/A
POINTS	N/A
SHOTS ON GOAL	N/A
GROUND BALLS	N/A
CAUSED TURNOVERS	N/A
DRAW CONTROLS	N/A

CAREER STATS								
YEAR	GP/GS	G	A	PTS	SOG	GB	CT	DC
2023	0/0	0	0	0	0	0	0	0
2024	0/0	0	0	0	0	0	0	0
2025	0/0	0	0	0	0	0	0	0
2026	1/1	0	0	0	0	0	0	0
TOTAL	1/1	0	0	0	0	0	0	0

DELAWARE TV/RADIO CHART



1

Stella Stolarick
Sophomore | A
Haddonfield, N.J.
Haddonfield Memorial
@stellastolarick



2

Grayson Buono
Sophomore | A
Wayne, Pa.
Radnor
@grayson.buono



3

Lara Hoeflich
Sophomore | D
Glenelg, Md.
Glenelg High School
@lara.hoeflich8



4

Marin Mooney
Freshman | A
Villanova, Pa.
Radnor
@_marinmooney



6

Jenny Green
Freshman | D
Garnet Valley, Pa.
Garnet Valley
@jenny_green



7

Julia Ciuffo
Junior | M
Reisterstown, Md.
Roland Park Country
@juliaciuffo



8

Jaclyn Marszal
Senior | A
Catonsville, Md.
Glenelg Country School (Notre Dame)
@jaclynmarszal



9

Kat Baseggio
Junior | D
Guilford, Conn.
Guilford
@katbaseggio



10

McKenzie Didio
Senior | A
Westport, Conn.
Staples
@mckenzieididio



11

Julia Reagan
Senior | M
East Atlantic Beach, N.Y.
Sacred Heart Academy
@juliareagannn



12

Erin Hussy
Freshman | M
Severna Park, Md.
Severna Park
@erin_huss7



13

Maggie Craytor
Sophomore | A
Charlottesville, Va.
Western Albemarle
@maggiecraytor



14

Sophia Muscolino
Junior | A
Baldwinsville, N.Y.
Charles W. Baker
@sophia.muscolino



15

Meg MacMurray
Sophomore | A
Chester Springs, Pa.
The Hill School (Maryland)
@megmacmurray



16

Callie Drab
Senior | A
Suffern, N.Y.
Suffern
@calliedrab



17

Morgan Gore
Senior | M
Crofton, Md.
Arundel
@morgangore



18

Lena Stolarick
Sophomore | D
Haddonfield, N.J.
Haddonfield Memorial
@lena_stolarick



19

Maggie Porter
Freshman | A
Stevenson, Md.
St. Paul's School for Girls (Penn State)
@maggieporterr



20

Sam Paradise
Junior | M
Perry Hall, Md.
Maryvale Preparatory
@sparadise10



21

Kate Mercer
Senior | D
Katonah, N.Y.
John Jay
@kat Mercer



22

Mary Matey
Junior | D
Phoenixville, Pa.
Archbishop John Carroll
@marymatey



23

Lulu Rishko
Sophomore | M
Rehoboth Beach, Del.
Cape Henlopen
@lulurishko



24

Kylie O'Brien
Sophomore | D
Berwyn, Pa.
Academy of Notre Dame
@kylieobrien_



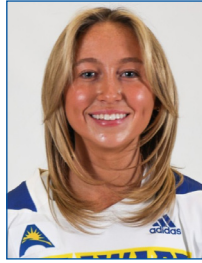
25

Amanda Gazelle
Freshman | M
Odenton, Md.
Archbishop Spalding
@amandagazelle15

DELAWARE TV/RADIO CHART



26
Alison Swartout
Senior | M
Charlottesville, Va.
Monticello
@alison.swartout



27
Maddy Mobilia
Junior | D
New Rochelle, N.Y.
The Ursuline School
@madelinemobilia



28
Maggie Farragher
Senior | D
Evanston, Ill.
Evanston Township
@maggiefarragher



29
Kennedy Radziul
Sophomore | D
Northport, N.Y.
Northport
@kennedyradziul



30
Marina Mersch
Freshman | GK
Media, Pa.
Cardinal O'Hara
@marina.mersch18



31
Maddie George
Sophomore | GK
Centreville, Md.
Queen Anne's County
@maddie.a.george



32
Ella Rishko
Senior | A
Rehoboth Beach, Del.
Cape Henlopen (Virginia Tech)
@ella.rishko



33
Sydney O'Donnell
Sophomore | M
Downingtown, Pa.
Downingtown West
@sydneyodonnell33



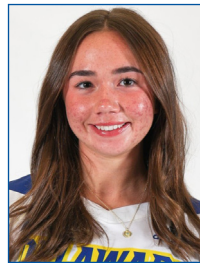
34
Riley Sturtevant
Senior | M
Springfield, Va.
West Springfield
@riley_sturtevant



35
Nichelle Desbordes
Sophomore | D
Ellicott City, Md.
Glenelg Country School
@nichelle.des11



37
Mia Didio
Senior | D
Westport, Conn.
Staples
@mia.didio11



38
Sadie Schultz
Freshman | M
Riverhead, N.Y.
Riverhead
@sadieschultz_



40
Steph Marszal
Senior | GK
Catonsville, Md.
Glenelg Country School
@stephmarszal



41
Molly Baumgratz
Junior | M
Charlotte, N.C.
Charlotte Catholic
@mollybaumgratz



42
Ellie Dassoulas
Senior | A
Towson, Md.
Roland Park Country
@elliedassoulas



Head Coach
Amy Altig
7th season



Assoc. Head Coach
Kara Nakrasius
4th season



Assoc. Head Coach
Sam Pratt
2nd season



Assistant Coach
Lilly Siskind
2nd season