



# DELAWARE FIGHTIN' BLUE HENS

## WOMEN'S LACROSSE GAME NOTES

a new era.



Brendan Thomas, Director, Communications & Creative Services | 207-400-2840 | brendant@udel.edu

### SERIES HISTORY

All Time .....	n/a
Altig vs. ....	n/a
Streak .....	n/a
At Home .....	n/a
On the Road .....	n/a
Neutral .....	n/a
Largest Win .....	n/a
Largest Loss .....	n/a
Last Win .....	n/a
Last Loss .....	n/a

### HOW TO FOLLOW

Stream ..... ESPN+  
 Play-by-Play ..... Corey Spector  
 Analyst ..... Katherine Widrick

X/Instagram ..... @DelawareWLAX  
 Live Stats ..... bluehens.com

### WHO ARE WE

Only refer to our institution as the **University of Delaware** or **UD**. Do not use "U of D," "UofD," "the U of D" or "UDel." Do not use periods in "UD." We are based in Newark (new-ARK), Delaware.

We are the Fightin' Blue Hens on first reference and Blue Hens, Hens, or Blue & Gold after that.

### MEDIA RELATIONS

For interview requests for women's lacrosse student-athletes or coaches, please contact Brendan Thomas, Director, Communications & Creative Services.

Email ..... brendant@udel.edu  
 Cell ..... 207-400-2840

## DELAWARE (11-4, 7-0 ASUN)

GM 16



**Head Coach:** Amy Altig  
**Record at UD:** 47-44 (7th season)  
**Career Record:** same  
**Last:** W, 19-7 vs. Queens



**Head Coach:** Kelly Nangle  
**Record at LU:** 110-119 (13th season)  
**Career Record:** 126-137 (15th season)  
**Won:** W, 19-9 at Queens

wednesday, april 22 | 2 p.m. et | lynchburg, va. | liberty lacrosse field (750) | espn+

### OPENING DRAW

The Fightin' Blue Hens have already clinched the No. 1 overall seed at the 2026 ASUN Championship. With a win or a Jacksonville loss, UD can win the outright regular season title.

Delaware enters Thursday's matchup riding a 10-game winning streak, the program's longest streak since winning 10-straight games between the 1999-2000 seasons. 2016. The last time UD has had an 11-game winning streak was when it opened the 1983 campaign, its national championship season, with 11-straight victories. In the winning streak, the Blue Hens have scored at least 13 goals in all 10 games, the longest streak in program history. The defense is allowing a paltry 7.0 goals per game and has held seven opponents under the 10-goal threshold.

Delaware is coming off a 19-7 win at Queens last Wednesday. **Jaclyn Marszal** had one of the best games in UD history as she finished with two goals and career highs of eight assists and 10 points. The 10 points are the most in a game by the Blue Hen since **Mia DeRuggiero** had 11 in 2019 (Towson). Her eight assists are tied for the third most in a single game in program history, and the most since DeRuggiero had nine in 2019 (Oregon). It is the most assists in a game by an ASUN player this season and tied for the second most by any player in the country. The 10 points are tied for the most in the ASUN.

Against Queens, Delaware held a 22-6 advantage in the draw circle, the ninth-straight game UD has won the battle at the draw. The 22 draw controls as a team are a new season high and are tied for the third most in program history. **Molly Baumgratz** grabbed a career-high 13 draws, the second most in a single game by a UD player.

**Ella Rishko** leads the ASUN in both goals (44) and goals per game (2.93). She leads all attackers in the country with 2.07 caused turnovers per game, which ranks third in the ASUN and 29th nationally. She is also fifth in the conference with 5.53 draw controls per game. **Jaclyn Marszal** and **Sophia Muscolino** are first and second in the ASUN with 2.20 and 2.17 assists per game, respectively.

### HEN LEADERS



ella rishko

**goals**  
44 goals



jaclyn marszal

**assists**  
33 assists



e. rishko / j. marszal

**points**  
55 points



ella rishko

**draws**  
83 draw controls



kennedy radziul

**ground balls**  
33 ground balls



steph marszal

**saves**  
87 saves

### 2026 SCHEDULE

KEY H A N



feb. 6  
Philadelphia, Pa.  
L, 12-10



feb. 13  
Newark, Del.  
L, 12-4



feb. 18  
Newark, Del.  
L, 15-10



march 4  
Newark, Del.  
W, 16-8



march 7  
Washington, D.C.  
L, 9-8



march 11  
Philadelphia, Pa.  
W, 13-6



march 14  
Newark, Del.  
W, 17-5



march 19  
Clarksville, Tenn.  
W, 19-3



march 21  
St. Charles, Mo.  
W, 25-7



march 26  
Newark, Del.  
W, 14-13



march 28  
Newark, Del.  
W, 16-6



april 1  
Newark, Del.  
W, 13-12



april 9  
Newark, Del.  
W, 16-3



april 11  
Newark, Del.  
W, 14-10



april 16  
Charlotte, N.C.  
W, 19-7



april 22  
Lynchburg, Va.  
2 p.m.  
ESPN+

\*all times ET

# A NEW ERA

After a nearly 18-month wait, the new era is finally here and the University of Delaware Fightin' Blue Hens are officially full members of Conference USA as of July 1, 2025. Fourteen of UD's 22 varsity programs will be housed in CUSA, with eight others joining as affiliate members in the Atlantic Sun (women's lacrosse, men's and women's swimming & diving), Atlantic 10 (men's lacrosse), Mid-American Conference (rowing), The Summit League (men's soccer), Atlantic Hockey America (ice hockey), and Mountain Pacific Sports Federation (field hockey).

An athletic department built on history and tradition, Delaware brings an abundance of success to CUSA having won 10 national championships, 172 team conference titles, 282 individual conference crowns, 342 major conference awards, 2,655 all-league selections, and 543 all-americans.

UD student-athletes complement their athletic success with strong academic performances. During the 2024-25 academic year, the Blue Hens compiled a cumulative 3.41 grade-point average—the highest in department history, excluding academic terms impacted by COVID-19. This marked the 11th-consecutive year and the 23rd-straight semester in which UD student-athletes have posted a 3.00 GPA or better.

The move will push the Delaware brand across the nation, spanning from the northeast down into Florida, and west as far as New Mexico. However, the reach won't stop there. At least five football games will hit the national scene on CBS Sports Network/ESPN family of networks, including a non-conference tilt on FOX against Colorado. Men's and women's basketball will also have the chance to play nationally televised games as part of CUSA's media rights agreement with CBS Sports Network and ESPN.

Speaking of reach, Delaware's initial announcements about joining Conference USA reached over two billion people according to social media analytics. Put that into perspective – just over one million people live in the state of Delaware. That means these announcements reached over 2,000 Delawares.



## CUSA SPONSORED DELAWARE SPORTS

- Baseball
- M/W Basketball
- W Cross Country/Track & Field
- Football
- M/W Golf
- W Soccer
- Softball
- M/W Tennis
- Volleyball

## OTHER DELAWARE SPORTS AFFILIATIONS

- Field Hockey
- Ice Hockey
- M Lacrosse
- W Lacrosse
- MPSF
- Atlantic Hockey America
- Atlantic 10
- Atlantic Sun
- W Rowing
- M Soccer
- M/W Swim/Dive
- Mid-American
- The Summit League
- Atlantic Sun

### QUICK FACTS

School.....	University of Delaware
Location.....	Newark, Del.
Founded.....	1743
Enrollment.....	24,039
President.....	Laura Carlson
School Website.....	www.udel.edu
Nickname.....	Fightin' Blue Hens
School Colors.....	Blue & Gold
Athletics Website.....	www.bluehens.com
Director of Athletics.....	Jordan Skolnick
Conference.....	Atlantic Sun
Website.....	www.asunsports.org

### WOMEN'S LACROSSE PROGRAM

Facility.....	Delaware Stadium
Capacity.....	18,077
First Season of Women's Lacrosse.....	1978
All-Time Record.....	439-357-1
All-Time Delaware Stadium Record.....	71-55
National Championships.....	3
Conference Championships.....	6
Head Coach.....	Amy Altig (James Madison '05)
Career Record.....	47-44 / 7th season
Record at UD.....	same
Letterwinners Returning/Lost.....	31/10
Starters Returning/Lost.....	10/2
Newcomers.....	8
2025 Overall Record.....	10-6
2025 CAA Record.....	6-2
2025 CAA Finish.....	3rd
2025 Postseason.....	CAA Semifinals

### TABLE OF CONTENTS

A New Era.....	2
Storylines.....	3-7
Program information.....	3
Statistical comparison.....	3
What to look for.....	3
Delaware record when.....	4
On this date.....	4
Active points leaders.....	5
Statistical superlatives.....	6
Altig record vs. opponents.....	7
Milestone watch.....	7
Roster.....	8
Head coach Amy Altig.....	9
Assistant coaches & support staff.....	10
Atlantic Sun Conference.....	11
University of Delaware.....	12
Starters & stat leaders.....	13
Highs & lows.....	14-15
The last time.....	16
Season stats.....	17
NCAA Rankings.....	18-19
Player Pages.....	20-29
TV Roster.....	30-31

### WHAT TO LOOK FOR...

- Delaware is 9-0 this season, and 28-11 in seven seasons under head coach **Amy Altig** when holding opponents under 85% in clearing attempts.

- With a win over Liberty, not only will Delaware win the outright ASUN Regular Season Championship, it will be the program's most wins (12) in a season since 2000.

### inside the streak

The Blue Hens are currently on a 10-game winning streak, tied for the longest active streak in Division I with Clemson, Florida, and Stony Brook. It is the program's longest winning streak since winning 10-straight games between the end of 1999 (3) and the start of 2000 (7). During the streak, Delaware has outscored its opponents 166-72 and UD's offense has scored at least 13 goals in all 10 games, the longest streak in program history.

In the 10 games, Delaware holds a 167-84 advantage in the draw control circle, winning at a .665 clip.

The defense has held opponents to just 15.7 shot attempts per game and has forced 17.2 turnovers per game during the streak. Opponents are clearing at just a 73% (135-185) success rate, while the Blue Hens are nearly perfect at 92.7% (152-164).

### balanced scoring effort

Delaware has had 14 players score a goal in 2026, with six scoring at least 15 goals. Four times, the Blue Hens have had at least 10 different players in the scoring column, with a season-high 12 players scoring a goal at Lindenwood. That is the most since 12 Blue Hens scored in an 18-4 win over Kent State on February 25, 2024.

### tough sos

Delaware has had the 53rd-toughest schedule in the country based on opponents winning percentage. UD's first 15 opponents hold an overall record of 113-102 (.526), with three of its early-season opponents - Rutgers, Navy, Georgetown - all seeing time in the national rankings and holding a combined 36-12 record.

### stiff defense

The Fightin' Blue Hens lead the ASUN and rank 19th nationally with 8.53 goals allowed per game. The defense allowed less than 10 goals in six-straight games from March 4-21, the program's longest streak since 2016. Overall, UD has held its opponents to single digits nine times in 15 games in 2026.

### scoreless streaking

Delaware's has shut out its opponents in 11 different quarters this season, including three-consecutive quarters against Mount St. Mary's (March 14) and first half against Austin Peay (March 19) in consecutive games.

Against the Mount, UD did not allow a goal for the final 45:16 of the game, before shutting out the Governors for the first 35:52 of game action for a consecutive scoreless streak of 71:08. Overall, Delaware has had seven different streaks this season of holding opponents scoreless for 20 minutes or more.

### chasing 50

**Ella Rishko** currently leads the Blue Hens and the ASUN with 44 goals on the season. She is the first Blue Hen since **Christine Long** in 2019 to reach the 40-goal mark in a season. The last time Delaware had a player with 50 goals in a season was **Jenn Rinnander** with 52 in 1994.

### filling the tub

In their nine home games at Delaware Stadium this season, the Blue Hens averaged 417 fans per game. That number leads the ASUN and ranks 26th nationally. The Blue & Gold is the only ASUN program averaging more than 300 fans per game.

### STATISTICAL COMPARISON

Category	DEL	NCAA	ASUN	LU	NCAA	ASUN
Assists Per Game	7.60	20th	2nd	5.63	60th	3rd
Caused TO Per Game	11.13	15th	2nd	16.13	1st	1st
Clearing Percentage	.889	45th	3rd	.834	100th	6th
Draw Control Percentage	.616	9th	2nd	.478	81st	7th
Draw Controls Per Game	15.00	15th	2nd	11.63	72nd	6th
Free Position Percentage	.500	27th	1st	.463	53rd	3rd
Ground Balls Per Game	16.87	26th	2nd	20.44	3rd	1st
Save Percentage	.405	86th	6th	.429	53rd	2nd
Scoring Defense	8.53	19th	1st	11.63	78th	4th
Scoring Margin	5.73	14th	1st	-0.38	--	4th
Scoring Offense	14.27	19th	1st	11.25	62nd	4th
Shot Percentage	.451	31st	3rd	.418	60th	4th
Shots Per Game	31.67	13th	1st	26.94	73rd	5th
Shots On Goal Per Game	22.07	24th	2nd	20.13	53rd	4th
Turnovers Per Game	14.07	54th	2nd	21.19	--	9th

**golden gore**

**Morgan Gore** reached the 100-career point milestone in Delaware's final home game of the season against Coastal Carolina. The senior reached the mark on her third goal of the game. Gore has played in all but one game in her UD career, missing the Navy game earlier this season due to injury.

**sensational steph**

**Steph Marszal** has been dominant in the cage this season, leading the ASUN and ranking 15th nationally in goals against average (8.53). She is second in the ASUN in minutes played (900), and sixth in total saves (87) and save percentage (.405). Marszal had three-straight games with 10 saves (Navy, UMBC, Georgetown), and had a .500 save percentage in five-straight games (UMBC, Georgetown, Drexel, Mount St. Mary's, Austin Peay), the longest streak by a Blue Hen since **Tori Zorovich** in 2013 (min. 30 minutes played/game).

**welcome back phia**

**Sophia Muscolino** missed the first three games of the season due to injury, but returned to the lineup against UMBC on March 4, making her first-career start. The junior has averaged 3.67 points per game and is second in the ASUN with 2.17 assists per game, ranking 35th nationally. She had a career-high seven points twice (Mount St. Mary's, Lindenwood). She had a career-high five assists against the Mount and her first-career hat trick at Lindenwood.

**historic opening weekend**

Delaware opened its first season of its ASUN era with a bang, enjoying a historic weekend on the road. The Blue Hens defeated Austin Peay 19-3 and Lindenwood 25-7. The 44 goals over the two-game stretch are the program's most since 1986. Against Lindenwood, the 25 goals are the most by a UD team since 1987 and is tied for the fifth most in program history. The 18-goal margin of victory is the largest since 2015. The Blue Hens dished out 17 assists against the Lions, the second-most in the Delaware record books and most in a game since 1990. Overall, 15 different players had a point over the weekend.

**kennedy going beast mode**

**Kennedy Radziul** has been a beast in the defensive zone this season, leading the Blue Hens with 33 ground balls and is second on the team with 25 caused turnovers. She had a career-high five caused turnovers at Georgetown and has had four ground balls in a game four times this spring.

**rishko on fire**

**Ella Rishko** recorded a hat trick in six-straight games from February 13 (Navy) through March 19 (Austin Peay). It was the longest streak since **Caitlin McCartney** also did it in six-consecutive games over the 2012-13 seasons. Rishko also had at least four points in five-straight games, the longest streak since **Delaney McDaniel** had four or more points in five-straight games between the 2024-25 seasons.

**kat scoops**

In Delaware's home-opener against Rutgers, **Kat Baseggio** had a career-high five ground balls to reach the 50-career ground ball milestone in her 34th-career game. The five ground balls are the most in a game by a Delaware player since March 6, 2024. Baseggio also finished with four caused turnovers, tying a career high.

**centurion status achieved**

Senior **Jaclyn Marszal** hit personal milestones in each of Delaware's first two games this season. She had two assists in the season opener at Temple to reach 100 career points, then added another assist against Rutgers to achieve 100 points in the Blue & Gold. Marszal had two goals as a freshman at Notre Dame.

**ella day in philadelphia**

Senior **Ella Rishko** reached a trio of milestones at Temple in the season opener. She had a hat trick to reach 100-career goals scored and recorded nine draw controls to surpass 100 for her career. She also reached 50-career ground balls with three on the day.

**200 club**

In Delaware's season opener against Temple, **Steph Marszal** became the 17th Blue Hen to reach the 200-career save mark. She is the first UD goalie to reach the mark since **Mercy McCarthy** (2019-23).

**asun a good fit**

The Blue Hens should fit right in during their first season in the ASUN in 2026. Delaware finished 34th in the final 2025 RPI rankings, which would have been at the top of the conference, with Liberty second at 39th. Statistically, Delaware would have ranked first in the conference in free position percentage (.545), second in scoring defense (11.63), and third in caused turnovers per game (11.19), assists per game (6.25) and turnovers per game (14.63).

**DELAWARE RECORD WHEN...**

	2026	ALTIG
Overall	11-4	47-44
Conference	7-0	23-14
Non-conference	4-4	24-30
Home	7-2	27-20
Away	4-2	20-20
Neutral	0-0	0-4
Current streak	W10	W10
Current home streak	W7	W7
Current road streak	W4	W4
Current neutral streak	--	L5
vs. ranked opponent	0-2	1-14
Day game	11-3	45-41
Night game (5 p.m. or later)	0-1	2-3
February	0-3	11-14
March	7-1	21-19
April	4-0	16-8
May	0-0	0-3
Scoring first	10-3	31-20
Opponent scores first	1-1	16-24
Scoring 0-4 goals	0-1	0-7
Scoring 5-9 goals	0-1	2-19
Scoring 10-14 goals	4-2	23-17
Scoring 15-19 goals	6-0	20-1
Scoring 20+ goals	1-0	2-0
Allowing 0-4 goals	2-0	6-0
Allowing 5-9 goals	6-1	24-3
Allowing 10-14 goals	3-2	15-21
Allowing 15-19 goals	0-1	1-17
Allowing 20+ goals	0-0	0-3
Leading after 1st	9-2	28-8
Trailing after 1st	1-2	9-23
Tied after 1st	1-0	8-5
Leading at halftime	9-2	35-6
Trailing at halftime	1-2	8-34
Tied at halftime	1-0	4-4
Leading after 3rd	10-1	37-6
Trailing after 3rd	1-2	4-28
Tied after 3rd	0-1	4-2
Overtime	0-0	1-3
Delaware has more GBs	10-2	34-14
Opponent has more GBs	0-2	10-28
GBs are even	1-0	3-2
Delaware wins more draws	10-2	36-10
Opponent wins more draws	1-2	11-31
Draws are even	0-0	0-3
Delaware clear attempts ≥ 85%	9-1	34-22
Delaware clear attempts < 85%	2-3	13-22
Opponent clear attempts ≥ 85%	2-4	19-33
Opponent clear attempts < 85%	9-0	28-11

**ON THIS DATE IN DELAWARE WLAX HISTORY...**

**APR**

The Fightin' Blue Hens are 8-8 all-time in games played on April 22, with a 1-0 mark under head coach **Amy Altig**.

**22**

In 1995, the fifth-seeded Blue Hens defeated third-seeded James Madison 6-5 in the CAA Semifinals. In 2023, Delaware overcame a 7-5 deficit to defeat Elon 12-11. **Madison Hranicka** set the single-season record for caused turnovers, while **Danielle Livornese** (3g, 1a) and **Delaney McDaniel** (4a) each had four points to lead the offense.

## ACTIVE POINTS LEADERS

Name	Yr.	G	A	P
Ella Rishko	Sr.	141	34	175
Jaclyn Marszal	Sr.	70	84	154
Morgan Gore	Sr.	91	11	102
Callie Drab	Sr.	40	27	67
Sophia Muscolino	So.	22	27	49
Riley Sturtevant	Sr.	34	9	43
McKenzie Didio	Sr.	33	2	35
Lulu Rishko	So.	18	6	24
Sam Paradise	Jr.	20	2	22
Maggie Porter	Fr.	13	5	18
Maggie Craytor	So.	13	3	16
Grayson Buono	So.	8	8	16
Julia Ciufo	Jr.	6	3	9
Sydney O'Donnell	So.	5	1	6
Meg MacMurray	So.	1	1	2
Alison Swartout	Sr.	1	0	1
Kennedy Radziul	So.	0	1	1
Kat Baseggio	Jr.	0	0	0
Molly Baumgratz	Jr.	0	0	0
Ellie Dassoulas	Sr.	0	0	0
Nichelle Desbordes	So.	0	0	0
Mia Didio	Sr.	0	0	0
Maggie Farragher	Sr.	0	0	0
Amanda Gazelle	Fr.	0	0	0
Jenny Green	Fr.	0	0	0
Lara Hoeflich	So.	0	0	0
Erin Hussey	Fr.	0	0	0
Mary Matey	Jr.	0	0	0
Kate Mercer	Sr.	0	0	0
Maddy Mobilia	Jr.	0	0	0
Marin Mooney	Fr.	0	0	0
Kylie O'Brien	So.	0	0	0
Julia Reagan	Sr.	0	0	0
Sadie Schultz	Fr.	0	0	0
Lena Stolarick	So.	0	0	0
Stella Stolarick	So.	0	0	0

## GOAL/POINT STREAKS

Name	Consecutive Games	
	w/Point	w/Goal
Jaclyn Marszal	23	5
Sophia Muscolino	12	12
Morgan Gore	10	10
Ella Rishko	3	3
Riley Sturtevant	3	3
Lulu Rishko	2	2
Grayson Buono	2	0
Julia Ciufo	1	1
McKenzie Didio	1	1
Callie Drab	1	1

## altig here for the long haul

In July, Delaware and head coach **Amy Altig** agreed upon a contract extension that will keep her at the helm of the women's lacrosse program through the 2030 season. Altig was named the seventh head coach in program history in June 2019 and has led Delaware to a 36-40 record through her first six seasons, including back-to-back 10-win campaigns in 2023-24. UD won six CAA games in 2025, the program's most league wins since 1999 when the Blue Hens went 6-0 in America East play.

## nakrasius promoted

Back in June, head coach **Amy Altig** announced the promotion of **Kara Nakrasius** to associate head coach. Nakrasius joined the UD program in August 2022 and has spent the past three seasons overseeing UD's efforts on defense and at the draw. In 2025, the Blue Hens ranked eighth nationally in caused turnovers per game (11.19) after ranking ninth in 2024 (10.44). Delaware has set eight program records on defense and at the draw in three seasons under Nakrasius.

## Records under Nakrasius

- Team single-game CT (26)
- Team single-game GB (33)
- Team single-game DC (26)
- Team single-season DC (240)
- Individual single-game CT (Hranicka, 11)
- Individual single-season CT (Hranicka, 50)
- Individual single-game DC (Rishko, 15)
- Individual career DC (Livornese, 223)

## keep the winning coming

Delaware is looking to build off of back-to-back 10-win seasons. It is the first time the program has had consecutive winning seasons since 2016-17 and the first time it has won at least 10 games in consecutive years since 2015-16.

## runnin' it back

The Blue Hens return 10-of-12 starters from the 2025 season after the graduation of All-CAA Second Team selections Delaney McDaniel and Erin Gormley. Overall, UD returns 31 players who were on last season's roster, including 21 who saw action in at least one game and 13 who appeared in at least 12 games.

## oh captain, my captains

Delaware will be led by a trio of senior captains in 2026 as **Maggie Farragher**, **Morgan Gore**, and **Ella Rishko** were all selected to lead the squad. Farragher and Gore are both second-time selections after serving as captains in 2025, while Rishko is a first-time captain in her second season as a Blue Hen following her transfer from Virginia Tech.

## newcomers

The Blue Hens welcome eight newcomers to the roster in 2026. The group includes seven freshmen - **Amanda Gazelle**, **Jenny Green**, **Erin Hussey**, **Marin Mooney**, **Marina Mersch**, **Maggie Porter** and **Sadie Schultz** - who will all look to make their collegiate debuts in 2026. Porter transferred to Delaware after spending the fall at Penn State. Additionally, sophomore transfer **Meg MacMurray** joined the Hens after a year at Maryland.

## roster breakdown

The 2026 Delaware roster features 39 players hailing from nine different states. Sisters **Ella** and **Lulu Rishko** are the only two Delawareans on the roster, while senior captain **Maggie Farragher** (Illinois) is the farthest from home. Maryland (12), Pennsylvania (8) and New York (7) are the three most represented states.

## returning offensive firepower

Delaware returns three of its top-five scorers. **Jaclyn Marszal** ranked second on the team with 50 points (21g, 29a), while **Ella Rishko** had a team-leading 36 goals and 45 points, and **Morgan Gore** (30g, 2a) rounded out the top five. Overall, the Blue Hens bring back 67% of its goal-scoring production from last season.

## defensive dawgs

The Blue & Gold ranked eighth in the country in 2025 with 11.19 caused turnovers per game. The Hens bring back starters **Kat Baseggio** (23 CT, 29 GB), **Maggie Farragher** (13 CT, 20 GB), and **Kennedy Radziul** (12 CT, 20 GB). Overall, UD returns 69% of its caused turnover production from 2025.

## it starts at the draw

The Blue Hens went 7-0 in 2025 when winning more draws than their opponents. **Ella Rishko** set the program single-game record with 15 draw controls at Towson (April 13).

## get the lead, hold the lead

The Blue Hens have been very good in recent years in holding a second-half lead. In 2025, the squad went 10-1 when leading at halftime and 9-0 when having the advantage after three quarters. Similarly, Delaware was 8-0 in 2024 when up at the midway point and 10-0 when leading after three quarters.

## magic number is 10

Since **Amy Altig** became head coach prior to the 2020 season, the Blue Hens are 27-3 when holding opponents under 10 goals. On the flipside, Delaware is 39-18 when the offense scores 10 or more goals.

**caa postseason honors**

Delaware returns three of its five All-CAA selections from a season ago. Senior **Morgan Gore** was an All-CAA Second Team pick in 2025, earning her second-career postseason nod, and sophomores **Lulu Rishko** and **Kennedy Radziul** were both selected to the CAA All-Rookie Team.

**puerto rico**

Senior twins **McKenzie** and **Mia Didio** both represented Puerto Rico at the 2024 World Lacrosse Women's U20 Championship in Hong Kong, China. Their maternal grandmother is a native of Puerto Rico and the two earned spots on the Puerto Rico U20 National Team.

Puerto Rico finished fifth overall with a 6-2 record, going 3-1 in pool play and winning two consolation playoff games. McKenzie finished sixth on the team in scoring with eight goals and two assists. Mia, unfortunately, missed the tournament due to injury.

**saac queen**

Senior **McKenzie Didio** is currently in her second year serving as president of Delaware's Student-Athlete Advisory Committee (SAAC). During the 2025-26 academic year, Didio is also serving as a vice chair representative for Conference USA's SAAC, alongside softball graduate student **Claire Woods**.

**there's something in the gene pool**

The Blue Hens had two pairs of sisters on the team who are both two-thirds of a set of triplets. Seniors **Jaclyn** and **Steph Marszal** have a third sister, Jamie, who is a senior at Loyola Maryland. Sophomores **Lena** and **Stella Stolarick** also have a third sister who is on the Holy Cross track & field team.

The genetic trait of twins runs strong on the Blue Hens' roster. Seniors **McKenzie** and **Mia Didio** have spent their entire careers at UD, while junior **Molly Baumgratz** has a twin sister - Ellie - who attends the University of Tennessee. Freshman **Marina Mersch** has a twin sister - Chiara - who is also a freshman at Delaware.

**Ella** and **Lulu Rishko** make up a fourth set of sisters on the 2026 roster. Additionally, junior **Mary Matey's** older sister, **Kellie Ann**, played defense for the Blue Hens from 2021-24. They were both on the roster during the 2024 season.

**always fightin'**

Senior **Jaclyn Marszal** transferred to Delaware after playing her freshman season at the University of Notre Dame, going from the Fighting Irish to the Fightin' Blue Hens. Marszal is UD's top returning scorer from a season ago when she had 21 goals and 29 assists for 50 points. Entering her third season with the Blue & Gold, Marszal has 97 points (46g, 51a) in 32 games for Delaware after scoring two goals in five games at Notre Dame.

**no place like home**

Senior **Ella Rishko** played her first two collegiate seasons at Virginia Tech before transferring home to the First State to play her final two years as a Blue Hen alongside her sister **Lulu**. The Rehoboth Beach, Delaware native led UD with 36 goals and 55 draw controls in 2025, finishing with 45 total points. In two seasons at Virginia Tech, Rishko had 61 goals and 75 points over 32 games.

**impressive in the classroom**

In addition to their on-field success, the Hens have been showcasing their hard work in the classroom. The Blue Hens had a 3.52 team GPA during the 2025 fall semester and five student-athletes - **McKenzie Didio**, **Mia Didio**, **Amanda Gazelle**, **Morgan Gore** and **Jaclyn Marszal** - posted perfect 4.0 semesters.

**new opponents on schedule**

With Delaware beginning a New Era in the ASUN this season, the Blue Hens will be facing a number of first-time opponents. Eight of the team's 16 games will be against programs UD has never played, including seven of Delaware's eight ASUN matchups. The new opponents consist of Navy (Feb. 18), Austin Peay (March 19), Lindenwood (March 21), Jacksonville (March 26), Stetson (March 28), Kennesaw State (Apr. 9), Queens (Apr. 16) and Liberty (Apr. 22).

**matey family affair**

Junior defender **Mary Matey** is continuing a couple of family legacies as she is the fourth sister in her family to play Division I college lacrosse. She overlapped in Newark with her sister **Kellie Ann** who was also a defender for the Blue Hens from 2021-24). She also had a sister, Rachel, who played defense at James Madison (2019-23) and her oldest sister, Meghan, was a midfielder at Ohio State (2017-20).

Since 2021, Matey and her sisters have all worn #22 on the lacrosse field to honor their late father, Dave, who tragically passed away after a battle with cancer. He wore #22 as a college football linebacker at Ursinus.

**SCORING SUPERLATIVES**

	'23	'24	'25	'26	TOT
<b>Multi-Goal Games</b>					
Ella Risho	11	2	11	11	35
Morgan Gore	2	5	9	9	25
Jaclyn Marszal	0	6	5	7	18
McKenzie Didio	2	1	0	5	8
Riley Sturtevant	0	0	4	4	8
Callie Drab	0	3	3	2	8
Lulu Rishko	--	--	2	3	5
Sam Paradise	--	1	4	--	5
Sophia Muscolino	--	0	0	4	4
Maggie Porter	--	--	--	3	3
Maggie Craytor	--	--	1	2	3
Julia Ciufu	--	0	0	1	1
Grayson Buono	--	--	0	1	1
Sydney O'Donnell	--	--	0	1	1
<b>Hat Tricks</b>					
Ella Rishko	7	2	6	11	26
Morgan Gore	1	0	5	7	13
Jaclyn Marszal	0	4	2	3	9
Sophia Muscolino	--	0	0	2	2
Callie Drab	0	0	2	1	3
Sam Paradise	--	1	1	0	2
Riley Sturtevant	0	0	0	2	2
Maggie Craytor	--	--	1	1	2
McKenzie Didio	0	0	0	1	1
Grayson Buono	--	--	0	1	1
<b>Multi-Point Games</b>					
Ella Risho	12	6	12	13	44
Jaclyn Marszal	0	12	14	13	39
Morgan Gore	4	5	9	11	29
Callie Drab	0	7	6	5	18
Sophia Muscolino	--	1	0	11	12
Riley Sturtevant	0	0	4	7	11
McKenzie Didio	2	1	0	5	8
Lulu Rishko	--	--	3	3	6
Sam Paradise	--	1	5	--	6
Grayson Buono	--	--	0	4	4
Maggie Porter	--	--	--	4	4
Maggie Craytor	--	--	1	3	4
Julia Ciufu	--	0	0	2	2
Sydney O'Donnell	--	--	0	2	2
<b>Games with 10+ Points</b>					
Jaclyn Marszal	0	0	0	1	1
<b>Games with 5+ Points</b>					
Ella Risho	4	1	4	3	12
Jaclyn Marszal	0	4	3	4	11
Sophia Muscolino	--	0	0	5	5
Morgan Gore	0	0	1	1	2
Riley Sturtevant	0	0	0	1	1
McKenzie Didio	0	0	0	1	1
Grayson Buono	--	--	0	1	1
Callie Drab	0	0	1	0	1
<b>Games with 10+ Saves</b>					
Steph Marszal	--	4	3	3	10

**ALTIG VS.**

OPPONENT	H	A	N	OVR
Army	0-1	0-0	0-0	0-1
<b>Austin Peay *</b>	<b>0-0</b>	<b>1-0</b>	<b>0-0</b>	<b>1-0</b>
Campbell	1-0	1-0	0-0	2-0
<b>Coastal Carolina</b>	<b>1-1</b>	<b>0-0</b>	<b>0-0</b>	<b>1-1</b>
Delaware State	1-0	0-0	0-0	1-0
Denver	0-0	0-1	0-0	0-1
<b>Drexel</b>	<b>0-2</b>	<b>1-2</b>	<b>0-1</b>	<b>1-5</b>
Duquesne	1-0	0-0	0-0	1-0
Elon	2-0	2-1	0-0	4-1
George Mason	0-0	0-1	0-0	0-1
<b>Georgetown</b>	<b>0-3</b>	<b>1-3</b>	<b>0-0</b>	<b>1-6</b>
Hofstra	0-2	2-0	0-0	2-2
<b>Jacksonville *</b>	<b>1-0</b>	<b>0-0</b>	<b>0-0</b>	<b>1-0</b>
James Madison	0-0	0-1	0-0	0-1
<b>Kennesaw State *</b>	<b>1-0</b>	<b>0-0</b>	<b>0-0</b>	<b>1-0</b>
Kent State	1-0	0-0	0-0	1-0
La Salle	1-0	0-1	0-0	1-1
Lafayette	2-0	0-0	0-0	2-0
Lehigh	1-0	1-0	0-0	2-0
<b>Liberty *</b>	<b>0-0</b>	<b>0-0</b>	<b>0-0</b>	<b>0-0</b>
<b>Lindenwood *</b>	<b>0-0</b>	<b>1-0</b>	<b>0-0</b>	<b>1-0</b>
Maryland	0-0	0-1	0-0	0-1
Monmouth	2-0	1-0	0-0	3-0
<b>Mount St. Mary's</b>	<b>2-0</b>	<b>1-0</b>	<b>0-0</b>	<b>3-0</b>
<b>Navy *</b>	<b>0-1</b>	<b>0-0</b>	<b>0-0</b>	<b>0-1</b>
Niagara	0-0	0-0	0-1	0-1
Old Dominion	1-0	1-0	0-0	2-0
Penn	0-0	0-1	0-0	0-1
Princeton	0-1	0-0	0-0	0-1
<b>Queens *</b>	<b>0-0</b>	<b>1-0</b>	<b>0-0</b>	<b>1-0</b>
<b>Rutgers</b>	<b>0-2</b>	<b>0-2</b>	<b>0-0</b>	<b>0-4</b>
<b>Saint Joseph's</b>	<b>1-1</b>	<b>0-1</b>	<b>0-0</b>	<b>1-2</b>
<b>Stetson *</b>	<b>1-0</b>	<b>0-0</b>	<b>0-0</b>	<b>1-0</b>
Stony Brook	0-1	0-2	0-1	0-4
<b>Temple</b>	<b>1-2</b>	<b>1-2</b>	<b>0-0</b>	<b>2-4</b>
Towson	1-2	1-0	0-1	2-3
<b>UMBC</b>	<b>2-1</b>	<b>2-0</b>	<b>0-0</b>	<b>4-1</b>
Wagner	1-0	1-0	0-0	2-0
William & Mary	2-0	0-2	0-0	2-2
<b>TOTALS</b>	<b>27-20</b>	<b>20-20</b>	<b>0-4</b>	<b>47-44</b>

**Bold** indicates 2026 opponent  
 \* Indicates first meeting in 2026

**red, white, and blue**

Head coach **Amy Altig** has been named the Team USA Girls National Team Development Program (NTDP) U-19 Co-Head Coach. She will lead the squad in the Rivalry Challenge this September and the Brogden Cup in October.

Altig will share coaching duties with Mount St. Mary's head coach Lauren Skellchock. The duo previously coached together fall at the 2025 Rivalry Challenge and the 2025 Brogden Cup, leading the U19 squad to a perfect 6-0 combined record. They also coached the USA Select U18 Girls Team to a title at the 2024 Brogden Cup.

**glenelg pipeline**

The Blue Hens have done well recruiting in Maryland, with 12 Marylanders on the 2026 roster. There are four Hens on the roster who hail from Howard County and attended high school in Glenelg. Senior twins **Jaclyn** and **Steph Marszal** (Catonsville) as well as sophomore **Nichelle Desbordes** (Ellicott City) come from Glenelg Country School, while sophomore **Lara Hoeflich** (Glenelg) went to Glenelg High School.

**new head hen**

**Jordan Skolnick** was named the University of Delaware's Director of Athletics & Campus Recreation in January. Skolnick joined UD Athletics in 2016 and served as interim director of athletics & campus recreation since March 2025. He is the eighth person in the department's history to hold the permanent role. Skolnick successfully guided the department through its transitions to Conference USA and the Football Bowl Subdivision (FBS), while prioritizing a renewed focus on campus collaboration to increase partnerships and ensure the University's ability to capitalize on increased national exposure.

**for the 302**

Delaware is one of 11 states that are represented by one area code. Delaware is the 302, while the other states are: Alaska, Hawaii, Maine, Montana, New Hampshire, North Dakota, Rhode Island, South Dakota, Vermont, and Wyoming.

**birds of a feather**

With over 1,100 schools in the NCAA, the Blue Hens are one of two institutions with the nickname in the hen family. Pomona-Pitzer, a Division III institution, is nicknamed the Sagehens. Both South Carolina and Jacksonville State have the nickname Gamecocks and Coastal Carolina is the Chanticleers, which both fall in the rooster family.

**MILESTONE WATCH**

**50-Career Ground Balls**

Jaclyn Marszal 48

**50-Career Caused Turnovers**

Kat Baseggio 44  
 Maggie Farragher 41  
 Kennedy Radziul 37

**50-Career Draw Controls**

Mary Matey 31

**300-Career Saves**

Steph Marszal 286

**GAMES/STARTS STREAKS**

	Consecutive	
	GP	GS
Jaclyn Marszal *	47	12
Kat Baseggio *	47	4
Callie Drab	47	0
Ella Rishko *	31	31
Riley Sturtevant	31	6
Lulu Rishko	29	0
Steph Marszal	24	24
Molly Baumgratz	23	4
Kennedy Radziul	23	4
Maggie Farragher	18	18
Lena Stolarick	16	4
Mary Matey	16	4
Maggie Porter	15	0
Maggie Craytor	15	0
Sydney O'Donnell	15	0
McKenzie Didio	14	0
Morgan Gore	12	12
Sophia Muscolino	12	4
Julia Ciufo	10	0
Grayson Buono	9	0
Meg MacMurray	1	0

\* indicates has played every game of UD career

## 2026 DELAWARE NUMERICAL ROSTER

#	NAME	POS.	YR.	HT.	HOMETOWN/HIGH SCHOOL (PREV. SCHOOL)
1	Stella Stolarick	A	So.	5-5	Haddonfield, N.J. / Haddonfield Memorial
2	Grayson Buono	A	So.	5-7	Wayne, Pa. / Radnor
3	Lara Hoeflich	D	So.	5-7	Glenelg, Md. / Glenelg High
4	Marin Mooney	A	Fr.	5-8	Villanova, Pa. / Radnor
6	Jenny Green	D	Fr.	5-5	Garnet Valley, Pa. / Garnet Valley
7	Julia Ciufu	M	Jr.	5-3	Reisterstown, Md. / Roland Park Country
8	Jaclyn Marszal	A	Sr.	5-8	Catonsville, Md. / Glenelg Country School (Notre Dame)
9	Kat Baseggio	D	Jr.	5-9	Guilford, Conn. / Guilford
10	McKenzie Didio	A	Sr.	5-6	Westport, Conn. / Staples
11	Julia Reagan	M	Sr.	5-3	East Atlantic Beach, N.Y. / Sacred Heart Academy
12	Erin Hussey	M	Fr.	5-7	Severna Park, Md. / Severna Park
13	Maggie Craytor	A	So.	6-0	Charlottesville, Va. / Western Albemarle
14	Sophia Muscolino	A	Jr.	5-4	Baldwinsville, N.Y. / Charles W. Baker
15	Meg MacMurray	A	So.	5-8	Chester Springs, Pa. / The Hill School (Maryland)
16	Callie Drab	A	Sr.	5-7	Suffern, N.Y. / Suffern
17	Morgan Gore	M	Sr.	5-6	Crofton, Md. / Arundel
18	Lena Stolarick	D	So.	5-4	Haddonfield, N.J. / Haddonfield Memorial
19	Maggie Porter	A	Fr.	5-5	Stevenson, Md. / St. Paul's School for Girls (Penn State)
20	Sam Paradise	M	Jr.	5-8	Perry Hall, Md. / Maryvale Preparatory
21	Kate Mercer	D	Sr.	5-8	Katonah, N.Y. / John Jay
22	Mary Matey	D	Jr.	5-6	Phoenixville, Pa. / Archbishop Carroll
23	Lulu Rishko	M	So.	5-5	Rehoboth Beach, Del. / Cape Henlopen
24	Kylie O'Brien	D	So.	5-6	Berwyn, Pa. / Academy of Notre Dame de Namur
25	Amanda Gazelle	M	Fr.	5-3	Odenton, Md. / Archbishop Spalding
26	Alison Swartout	M	Sr.	5-4	Charlottesville, Va. / Monticello
27	Maddy Mobilia	D	Jr.	5-1	New Rochelle, N.Y. / The Ursuline School
28	Maggie Farragher	D	Sr.	5-7	Evanston, Ill. / Evanston Township
29	Kennedy Radziul	D	So.	5-9	Northport, N.Y. / Northport
30	Marina Mersch	GK	Fr.	5-3	Media, Pa. / Cardinal O'Hara
31	Maddie George	GK	So.	5-9	Centreville, Md. / Queen Anne's County
32	Ella Rishko	A	Sr.	5-5	Rehoboth Beach, Del. / Cape Henlopen (Virginia Tech)
33	Sydney O'Donnell	M	So.	5-8	Downingtown, Pa. / Downingtown West
34	Riley Sturtevant	M	Sr.	5-7	Springfield, Va. / West Springfield
35	Nichelle Desbordes	M	So.	5-3	Ellicott City, Md. / Glenelg Country School
37	Mia Didio	M	Sr.	5-5	Westport, Conn. / Staples
38	Sadie Schultz	M	Fr.	5-6	Riverhead, N.Y. / Riverhead
40	Steph Marszal	GK	R-Sr.	5-4	Catonsville, Md. / Glenelg Country School
41	Molly Baumgratz	M	Jr.	5-8	Charlotte, N.C. / Charlotte Catholic
42	Ellie Dassoulas	A	Sr.	5-8	Towson, Md. / Roland Park Country School

## GEOGRAPHICAL

- Connecticut (3)**  
 9 Kat Baseggio  
 10 McKenzie Didio  
 37 Mia Didio
- Delaware (2)**  
 32 Ella Rishko  
 23 Lulu Rishko
- Illinois (1)**  
 28 Maggie Farragher
- Maryland (12)**  
 3 Lara Hoeflich  
 7 Julia Ciufu  
 8 Jaclyn Marszal  
 12 Erin Hussey  
 17 Morgan Gore  
 19 Maggie Porter  
 20 Sam Paradise  
 25 Amanda Gazelle  
 31 Maddie George  
 35 Nichelle Desbordes  
 40 Steph Marszal  
 42 Ellie Dassoulas
- North Carolina (1)**  
 41 Molly Baumgratz
- New Jersey (2)**  
 18 Lena Stolarick  
 1 Stella Stolarick
- New York (7)**  
 11 Julia Reagan  
 14 Sophia Muscolino  
 16 Callie Drab  
 21 Kate Mercer  
 27 Maddy Mobilia  
 29 Kennedy Radziul  
 38 Sadie Schultz

- Pennsylvania (8)**  
 2 Grayson Buono  
 4 Marin Mooney  
 6 Jenny Green  
 15 Meg MacMurray  
 22 Mary Matey  
 24 Kylie O'Brien  
 30 Marina Mersch  
 33 Sydney O'Donnell
- Virginia (3)**  
 13 Maggie Craytor  
 26 Alison Swartout  
 34 Riley Sturtevant

## PRO-NUN-SEE-AY-SHUNS

1 Stella Stolarick	STOLL-are-ick	27 Maddy Mobilia	Moe-BEAL-yuh
2 Grayson Buono	BYOU-no	28 Maggie Farragher	FAIR-uh-grr
3 Lara Hoeflich	LAH-ruh HOE-flick	29 Kennedy Radziul	RAD-zool
4 Marin Mooney	MARE-in	30 Marina Mersch	MERSH
7 Julia Ciufu	CHEW-foe	34 Riley Sturtevant	STIR-duh-vont
8 Jaclyn Marszal	MARZ-elle	35 Nichelle Desbordes	des-BORE-des
9 Kat Baseggio	Buh-SEE-GEE-oh	37 Mia Didio	DID-ee-oh
10 McKenzie Didio	DID-ee-oh	40 Steph Marszal	MARZ-elle
14 Sophia Muscolino	Mus-KUH-lee-no	41 Molly Baumgratz	BUM-gratz
18 Lena Stolarick	LEE-nuh STOLL-are-ick	42 Ellie Dassoulas	da-SOOL-is
22 Mary Matey	MAY-tee	AC Kara Nakrasius	Nah-KRAY-shus
26 Alison Swartout	SWORE-tout	AC Lilly Siskind	sis-KIND

## ROSTER BY CLASS

### SENIORS (13)

Ellie Dassoulas  
 McKenzie Didio  
 Mia Didio  
 Callie Drab  
 Maggie Farragher  
 Morgan Gore  
 Jaclyn Marszal  
 Steph Marszal  
 Kate Mercer  
 Julia Reagan  
 Ella Rishko  
 Riley Sturtevant  
 Alison Swartout

### JUNIORS (7)

Kat Baseggio  
 Molly Baumgratz  
 Julia Ciufu  
 Mary Matey  
 Maddy Mobilia  
 Sophia Muscolino  
 Sam Paradise

### SOPHOMORES (12)

Grayson Buono  
 Maggie Craytor  
 Nichelle Desbordes  
 Maddie George  
 Lara Hoeflich  
 Meg MacMurray  
 Kylie O'Brien  
 Sydney O'Donnell  
 Kennedy Radziul  
 Lulu Rishko  
 Lena Stolarick  
 Stella Stolarick

### FRESHMEN (7)

Amanda Gazelle  
 Jenny Green  
 Erin Hussey  
 Marina Mersch  
 Marin Mooney  
 Maggie Porter  
 Sadie Schultz

## HEAR OUR NAMES





### THE ALTIG FILE

**Hometown:** Millersville, Md.  
**Alma Mater:** James Madison '05  
**Degree:** Kinesiology  
**Years in Coaching:** 21st in 2026

### NOTABLE HIGHLIGHTS

**Coach**

2015 IWLCA Assistant Coach of the Year  
 U.S. Lacrosse Virginia Chapter Hall of Fame  
 USA National Team Defensive Coordinator

**Player**

2x All-CAA selection  
 2x CAA Champion  
 2009 USA World Cup Training Team  
 2008 USA Prague Touring Team  
 2003 USA National Team

### AS DELAWARE HEAD COACH

<b>Year</b>	7th in 2026
<b>Overall Record</b>	47-44
<b>Home</b>	27-20
<b>Away</b>	20-20
<b>Neutral</b>	0-4
<b>vs. Ranked Teams</b>	1-14
<b>In ASUN Games</b>	7-0
<b>Postseason</b>	0-3

### ALTIG YEAR-BY-YEAR

YEAR	W-L	PCT.	CONF
2020	2-3	.400	1-0
2021	1-5	.167	0-0
2022	5-12	.294	2-4
2023	8-8	.500	4-3
2024	10-6	.625	3-5
2025	10-6	.625	6-2
2026	11-4	.733	7-0
<b>TOTAL</b>	<b>47-44</b>	<b>.516</b>	<b>23-14</b>

**First career win:** 17-8 vs. Duquesne (3/4/20)

## HEAD COACH AMY ALTIG

Amy Altig enters her seventh season at the helm of the Fightin' Blue Hens in 2026. She was named the seventh coach of University of Delaware women's lacrosse program on June 3, 2019.

Altig has led the Blue Hens to immense success on the field, qualifying for the CAA Championship in three of four years since 2022. The program recorded back-to-back 10-win seasons in 2024-25, achieving the mark for the first time 2016, and UD's 7-1 record to begin the 2024 season was the best start since the 2016 season. Delaware won six CAA games in 2025, the most since joining the conference and the program's most league wins since 1999.

On March 11, 2022, the Blue Hens defeated No. 18 Temple on the road for their first win over a nationally-ranked opponent since 2017.

Delaware's student-athletes have taken home plenty of hardware since Altig arrived in Newark. Delaney McDaniel earned CAA Rookie of the Year honors in 2018, UD's first conference major award winner since 2016. Madison Hranicka was named the CAA Defensive Player of the Year in consecutive seasons (2023-24). The Blue Hens have earned 14 all-conference honors, led by three-straight All-CAA First Team selections by Hranicka (2022-24) and three by McDaniel. On the national level, Hranicka earned All-America honors in 2024 and all-region recognition in both 2023 and 2024. Erin Gormley was an all-region selection in 2025.

The Blue & Gold have had several statistical achievements with Altig at the helm. In 2025, the Blue Hens led the CAA and ranked sixth nationally in free position percentage (.545) while also ranking eighth in the country in caused turnovers per game (11.19). Against Lafayette in 2024, the Blue Hens set a program record for caused turnovers (26) and tied the record for ground balls (33). Goalkeeper Steph Marzsai finish ninth in the country in save percentage (.489) in 2024. Hranicka set the single-season program record in 2023 with 50 caused turnovers.

Altig arrived to Newark following nine seasons at Penn State University, where she was an assistant coach for six years and an associate head coach for the final three. She helped lead the Nittany Lions to 111 wins with seven NCAA Tournament appearances and two trips to the NCAA Tournament Final Four. During her tenure, she coached 19 All-Americans, 36 all-region performers, 40 all-conference selections in addition to more than 25 student-athletes who received academic honors. Additionally, PSU boasted three Conference Goalkeepers of the Year under Altig's guidance.

After helping Penn State to a third NCAA quarterfinal appearance in four years in 2015, Altig was named IWLCA Assistant Coach of the Year and was inducted to the U.S. Lacrosse Virginia Chapter Hall of Fame.

Prior to her time at PSU, Altig held assistant coaching stints at Princeton University (2007-10) and the University of Richmond (2005-06).

As a goalkeeper at James Madison University from 2001-05, Altig led the Dukes to two CAA titles, was a two-time all-conference pick and was selected to the North/South STX Senior All-Star Game. A two-time team captain, she also earned a nod to the 2004 CAA All-Tournament Team and still ranks in the Top 12 of three career statistical categories at JMU.

Altig earned a spot on the USA National Team in 2003 and was part of the 2009 USA World Cup Training Team and 2008 USA Prague Touring Team. She also served as a field coach for USA Tryouts from 2015-17. Since 2017, Altig has been the defensive coordinator/goalkeepers coach for the USA National Team.

A native of Millersville, Md., Altig earned a bachelor's degree in kinesiology with a concentration in sports management from James Madison in 2005. She and her wife, Megan, have two daughters, Ava, and Ryan, and a son, Brooks.

### ALTIG'S COACHING ASSIGNMENTS

YEAR	SCHOOL	POSITION
2020-Pres.	Delaware	Head Coach
2017-19	Penn State	Associate Head Coach
2011-16	Penn State	Assistant Coach
2007-10	Princeton	Assistant Coach
2005-06	Richmond	Assistant Coach

### SUPERLATIVES UNDER ALTIG

Most Goals	25, at Lindenwood (3/21/26)	Most Opp. Goals	20, 2x, last vs. Drexel (5/1/25)
Fewest Goals	2, 2x, last at Maryland (3/1/22)	Fewest Opp. Goals	3, 3x, last vs. Kennesaw State (4/9/26)
Most SOG	36, vs. Delaware State (2/24/21)	Most Opp. SOG	36, at Maryland (3/1/22)
Fewest SOG	6, vs. Stony Brook (4/6/24)	Fewest Opp. SOG	6, 2x, last vs. Lafayette (3/6/24)
Most GBs	33, vs. Lafayette (3/6/24)	Most Opp. GBs	30, vs. William & Mary (4/9/22)
Most CTs	26, vs. Lafayette (3/6/24)	Most Opp. CTs	19, vs. Lafayette (3/6/24)
Most DCs	26, vs. Old Dominion (2/25/23)	Most Opp. DCs	28, vs. Georgetown (3/8/25)
Most Saves	21, at Maryland (3/1/22)	Most Opp. Saves	20, 2x, last at Old Dominion (3/26/22)

## ASSISTANT COACHES

### KARA NAKRASIAS



Kara Nakrasius joined the coaching staff in August 2022 as an assistant coach and was promoted to associate head coach in June 2025. Nakrasius works primarily with the program's defensive and draw control units.

Under her guidance, the UD defense ranked in the top-10 nationally in 2024 and 2025 in caused turnovers per game. In 2024, the Blue Hens held opponents to the least number of goals allowed (160) since the 2017 season. Madison Hranicka earned back-to-back CAA Defensive Player of the Year recognition in 2023 and 2024.

At the draw, Nakrasius oversaw Delaware's unit that shattered the program record for draws in a single season (240) in 2023, averaging a CAA-leading 15.0 draw controls per game. Delaware set a program record with 26 draw controls in a single-game against Old Dominion. Danielle Livornese became UD's career draw control leader, finishing with 223. Ella Rishko set the individual single-game mark with 15 draw controls against Towson in 2025.

Prior to her arrival at UD, Nakrasius was on staff at Quinnipiac as an assistant coach in 2022, leading a defense that allowed a league-low 197 goals and ranked second in the MAAC with 8.88 caused turnovers per game.

Nakrasius was a five-year starter at Temple from 2016-21, where she was a four-year captain for the Owls. She broke the career draw control record with a total of 236 and ranked seventh in program history with 144 ground balls.

She was a two-time all-conference selection, earning All-AAC First Team honors in 2019 and second team recognition in 2021. Nakrasius was a four-time winner of the Devon Marie Lam "T" Means More Award which is given to the person who most exemplifies Temple Lacrosse through selflessness, dedication & desire for team success (2017-20). She was also a winner of the Enterprise Spirit & Sportsmanship Award (2017) & Parliament Award (2019) for the student-athlete who has demonstrated a devotion to the essence of sport through their acts of sportsmanship.

Nakrasius earned both her bachelor's (2020) and master's (2021) degrees from Temple University.

### SAMANTHA PRATT



Sam Pratt joined the Delaware women's lacrosse coaching staff as an associate head coach and offensive coordinator in August 2024.

In her first season with the Blue Hens, UD's offense averaged 13.06 goals per game to rank third in the CAA and was second in assists per game (6.25). Delaware led the conference and ranked sixth nationally with a .545 free position percentage, and Morgan Gore set the program record with 13 free position goals. Gore and Delaney McDaniel were named to the All-CAA Second Team while Lulu Rishko earned all-rookie honors.

Pratt came to Delaware after spending six seasons on the coaching staff at Mount St. Mary's. During her tenure, Pratt coached 29 student-athletes to all-league honors between the Northeast Conference (NEC) and the Metro Atlantic Athletic Conference (MAAC). The team posted a 63-35 record and sported a pair of NEC Offensive Players of the Year, an NEC Midfielder of the Year, and a NEC Rookie of the Year. Her offense in 2019 ranked 20th nationally in scoring with 14.11 goals per game. Two years later, the team finished 14th in the country with 15.06 goals per game.

Prior to joining the staff at Mount St. Mary's Pratt spent a season at La Salle where she served as offensive coordinator.

Pratt, then Sam Nolan, was a two-year team captain at UMBC (2013-17). She finished her career with 117 goals and 73 assists for 190 points, graduating as the program's all-time leader in assists, and ranked third in career points. She was a First Team All-America East selection in her final two seasons.

The Fallston, Maryland native earned a pair of degrees from UMBC in sociology (2016) and media and communication (2017). She received a master's degree in sport management from Mount St. Mary's in 2019.

Sam and her husband, Joe, a former UMBC men's soccer player, were married in 2022. The two have a pair of labrador retrievers, Finley & Champion.

### LILLY SISKIND



Lilly Siskind joined the Blue Hens after a five-year collegiate career at Old Dominion University, where she set multiple program records and garnered national recognition.

While at ODU, Siskind was a starter in 74 of 80 career games played. She collected 214 points with 149 goals and 65 assists over her five seasons with the program, adding 46 ground balls, 30 draw controls, and 33 caused turnovers.

Nationally, Siskind ranked in the top 10 for most career points in American Athletic Conference (AAC) history. In 2022, she ranked fourth & second in the AAC and 25th & 22nd national for most points and goals, respectively. Additionally, she earned First Team All-AAC in 2022, Second Team All-AAC in 2021, and VaSIDA All-State Second Team in 2021 & 2022.

Siskind left her mark on the ODU program, finishing third in career points, fourth career assists, and fifth in career goals.

Off the field, Siskind completed two bachelor's degrees in marketing and management along with a master's degree in sports management over her five-year tenure at ODU. She picked up an Academic All-District honor this past season as well as recognition from the AAC All-Academic, Conference USA academic honor roll, Big East academic honor roll, and ODU honor roll.

Siskind grew up in West Chester, Pennsylvania where she played lacrosse at Henderson High School. Her father was also a collegiate lacrosse player and spent his career at Towson where he was given All-American status his senior season.

## SUPPORT STAFF

**Jake Schrum**

**Tim Morrissey**

**Kelly Stafford**

**Dr. Christine Jehu**

Sport Administrator

Academic Advisor

Athletic Trainer

Sport Psychologist

**Austin Mark**

**Jack Levis**

**Brendan Thomas**

**Ryan Stiles**

Team Nutritionist

Equipment Manager

Athletic Communications

Strength & Conditioning Coach

# ATLANTIC SUN CONFERENCE

## STAFF

Jeff Bacon.....Commissioner  
 Kalista Gioglio.....Director / Executive Operations  
 Jerome Rodgers.....Deputy Commissioner / COO  
 Korinth Patterson.....Exec. Assoc. Comm. / Sport Admin. / SWA  
 Kaitlin Parsons.....Senior Assoc. Comm. / External Operations  
 Joseph Kaminski.....Senior Assoc. Comm. / Sport Admin.  
 Justin Burdette.....Associate Commissioner / CFO  
 David Miller.....Assistant Commissioner / Broadcasting  
 Elyse Appelblatt.....Assistant Commissioner / Digital Content  
 William Hall.....Assistant Commissioner / Sport Administration  
 Carl Mattox.....Assistant Commissioner / Sport Administration  
 Claire Johnson.....Director / Strategic Communications  
 Noah Walter.....Assistant Director / FB and BBall Operations  
 Rachel Cumberledge.....Assistant Director / Strategic Comms

## 2026 PRESEASON TEAM

**Preseason Offensive Player of the Year:** Kayleen Favreau, Queens

**Preseason Defensive Player of the Year:** Maggie Cuddy, Jacksonville

**Preseason Midfielder of the Year:** Katie Colavito, Liberty

**Preseason Goalkeeper of the Year:** Brookelynn Hodgkin, Jacksonville

### 2026 Preseason All-ASUN Team

- A - Kayleen Favreau, Queens
  - A - Ainsley Scruggs, Jacksonville
  - A - Ava Rajala, Liberty
  - A - Luci Selander, Lindenwood
  - MF - Katie Colavito, Liberty
  - MF - Abby Moran, Jacksonville
  - MF - Gabrielle Beaudet, Coastal Carolina
  - MF - Allyx Berry, Jacksonville
  - D - Maggie Cuddy, Jacksonville
  - D - Jenna Burrow, Liberty
  - D - Grace Lord, Coastal Carolina
  - D - Savannah Donahue, Queens
  - D - Madeleine Klunder, Liberty
  - GK - Brookelynn Hodgkin, Jacksonville
- \* a tie in voting resulted in a 14-person team

## 2026 PRESEASON POLL

Rank (1st place votes)	Points
1. Liberty (7)	79
2. Jacksonville	63
3. Coastal Carolina	62
<b>4. Delaware (2)</b>	<b>60</b>
5. Lindenwood	44
6. Queens	36
7. Kennesaw State	29
8. Stetson	20
9. Austin Peay	12



## 2026 ASUN WOMEN'S LACROSSE STANDINGS

School	ASUN	PCT.	Home	Away	Overall	PCT.	Home	Away	Neutral	Streak
<b>Delaware *</b>	<b>7-0</b>	<b>1.000</b>	<b>4-0</b>	<b>3-0</b>	<b>11-4</b>	<b>.733</b>	<b>7-2</b>	<b>4-2</b>	<b>0-0</b>	<b>W10</b>
Jacksonville *	6-1	.857	4-0	2-1	10-5	.667	8-1	2-4	0-0	W1
Liberty *	5-2	.714	1-2	4-0	7-9	.438	1-8	6-1	0-0	W3
Kennesaw State	3-4	.429	3-1	0-3	8-8	.500	5-3	3-5	0-0	W1
Lindenwood	3-4	.429	2-2	1-2	6-10	.375	4-3	2-7	0-0	L1
Stetson	3-4	.429	2-1	1-3	3-12	.200	2-5	1-7	0-0	W1
Queens	3-5	.375	2-2	1-3	3-12	.200	2-6	1-6	0-0	L3
Coastal Carolina	2-5	.286	2-1	0-4	9-7	.562	6-1	3-6	0-0	L2
Austin Peay	0-7	.000	0-3	0-4	4-12	.250	2-6	2-6	0-0	L9

\* - indicates a team has clinched a spot in the ASUN Championship

## 2026 ASUN WEEKLY AWARDS

### Offensive Player of the Week

- Feb. 9 - Alexandra Horn, Coastal Carolina
- Feb. 17 - Sienna Wyatt, Queens
- Feb. 23 - Maeve Brennan, Jacksonville
- March 2 - Shae Hagans, Jacksonville
- March 9 - Luci Selander, Lindenwood
- March 16 - Lexi Tinker, Kennesaw State
- March 23 - Sophia Nesci, Liberty
- March 30 - Jessica Giller, Jacksonville

### April 6 - Jaclyn Marszal, Delaware

- April 13 - Katie Colavito, Liberty
- April 20 - Ava Rajala, Liberty
- Kathleen Nichols, Stetson
- April 27

### Defensive Player of the Week

- Feb. 9 - Grace Lord, Coastal Carolina
- Feb. 17 - Charlotte Sadler, Coastal Carolina
- Feb. 23 - Charlotte Sadler, Coastal Carolina
- March 2 - Maggie Cuddy, Jacksonville
- March 9 - Brynn Delaney, Lindenwood
- March 16 - Charlotte Sadler, Coastal Carolina
- March 23 - Abby Moran, Jacksonville

### March 30 - Ella Rishko, Delaware

April 6 - Rachel Hines, Liberty

### April 13 - Lena Stolarick, Delaware

Jaxie Cestone, Jacksonville

April 20 - Ava Menna, Liberty

April 27

## UNIVERSITY OF DELAWARE

## IN THE RANKINGS

The University of Delaware is ranked in the top 1.6% globally, among nearly 21,000 institutions, based on educational quality, employability, faculty quality and research. In late 2024, Wall Street Journal ranked UD at No. 10 among public universities and No. 26 among all U.S. universities based on student professional readiness and career outcomes.

**Physical Therapy graduate program**  
No. 1 in the nation  
(U.S. News & World Report)

One of 24 UD graduate programs ranked in the top-100 by U.S. News

**Entrepreneurship undergraduate program**  
No. 3 in the Mid-Atlantic  
(The Princeton Review)

**Chemical Engineering undergraduate program**  
No. 4 in the nation  
(U.S. News & World Report)

One of six UD undergraduate programs ranked in the top-100 by U.S. News

**Chemical Engineering graduate program**  
No. 8 in the nation  
(U.S. News & World Report)

One of 24 UD graduate programs ranked in the top-100 by U.S. News

**Online MBA program**  
No. 20 out of 355 in the nation  
(U.S. News & World Report)

**Online Master's in Education program**  
No. 20 out of 313 in the nation  
(U.S. News & World Report)

**Nursing undergraduate program**  
No. 40 in the nation  
(U.S. News & World Report)  
A 34-spot jump from last year's ranking

## BEST VALUE

UD ranks among the country's best value propositions, according to U.S. News & World Report, Wall Street Journal, Kiplinger's and Forbes. This summer, The Princeton Review ranked UD among its 209 Best Value Colleges for 2025, earning one of the publication's highest return-on-investment ratings. Money magazine awarded UD 4½ stars out of a possible five in its 2025-26 rating of America's best colleges. The University, according to Money, "stands out for its affordability" as a public college providing an excellent value for in-state students, and is considered one of the Best Colleges in the Northeast.

## distinguished history

In 1743, the school that would become the University of Delaware was just a tiny institution, with a graduating class of about a dozen. Three of those graduates – **Thomas McKean**, **George Read** and **James Smith** – would go on to sign the Declaration of Independence; Read would also sign the U.S. Constitution, helping launch a new paradigm of freedom for an entire nation and a beacon of liberty for much of the world.

## first in study abroad

In 1923, UD initiated a program to enhance students' learning by giving them an overseas experience. Influenced by the carnage he saw as an ambulance driver in World War I, professor **Raymond Kirkbride** believed that understanding other cultures was critical to promoting peace. His idea would grow into the first study-abroad program in the United States. Today approximately a third of all UD students participate in study abroad programs offered around the world. This year, the University celebrates the 10-year anniversary of its World Scholars Program, through which a cohort of new students experience their first UD semester abroad. These students return to UD for the spring and, as juniors, they can elect one of 40 study-abroad experiences.

## introducing ud's new leadership

Interim President **Laura Carlson** and Interim Provost **Bill Farquhar** have been at the helm since July 1. Carlson joined the University of Delaware community in 2022, serving as its chief academic officer when she became the University's 12th Provost. Farquhar has been a faculty member for more than 23 years in UD's Department of Kinesiology and Applied Physiology. He most recently served as the dean of UD's College of Health Sciences.

## student applications are climbing

Interest in a University of Delaware education continues to soar. UD received more than 40,000 applications for this year's class of first-year students, setting a UD record for the seventh consecutive year. Over the last year, UD hosted more than 38,000 visitors (prospective students and their families) at open houses and campus tours, and awarded more than \$200 million in financial aid to its newest students.

## incorporating ai into curriculum

AI has the potential to reshape higher education. UD has applied this technology in myriad ways and continues to explore further applications for artificial intelligence – including the launch of new academic offerings like an undergraduate major, a graduate degree program and a certificate; the creation of UD's First State AI Institute; and the incorporation of generative AI into curricula.

## PROMINENT ALUMNI



joe Biden '65



chris christie '84



joe flacco '08



elena delle donne '13

# delaware STARTERS BY GAME

OPPONENT	D	D	D	D	D/M	M	M	M/A	A	A	A	GK
at Temple	Baseggio	L. Stolarick	Matey	Farragher	Radziul	Gore	Sturtevant	Baumgratz	J. Marszal	Porter	E. Rishko	S. Marszal
Rutgers	Baseggio	L. Stolarick	Matey	Farragher	Radziul	Gore	L. Rishko	Baumgratz	Drab	Porter	E. Rishko	S. Marszal
Navy	Baseggio	L. Stolarick	Matey	Farragher	Radziul	L. Rishko	Sturtevant	Baumgratz	J. Marszal	Drab	E. Rishko	S. Marszal
UMBC	Baseggio	L. Stolarick	Matey	Farragher	Radziul	Gore	L. Rishko	Baumgratz	J. Marszal	Muscolino	E. Rishko	S. Marszal
at Georgetown	Baseggio	L. Stolarick	Matey	Farragher	Radziul	Gore	L. Rishko	Baumgratz	J. Marszal	Muscolino	E. Rishko	S. Marszal
at Drexel	Baseggio	L. Stolarick	Matey	Farragher	Radziul	Gore	L. Rishko	Baumgratz	J. Marszal	Muscolino	E. Rishko	S. Marszal
Mount St. Mary's	Baseggio	L. Stolarick	Matey	Farragher	Radziul	Gore	L. Rishko	Baumgratz	J. Marszal	Muscolino	E. Rishko	S. Marszal
at Austin Peay	Baseggio	L. Stolarick	Matey	Farragher	Radziul	Gore	L. Rishko	Baumgratz	J. Marszal	Muscolino	E. Rishko	S. Marszal
at Lindenwood	Baseggio	L. Stolarick	Matey	Farragher	Radziul	Gore	L. Rishko	Baumgratz	J. Marszal	Muscolino	E. Rishko	S. Marszal
Jacksonville	Baseggio	L. Stolarick	Matey	Farragher	Radziul	Gore	Sturtevant	Baumgratz	J. Marszal	Muscolino	E. Rishko	S. Marszal
Stetson	Sturtevant	Reagan	Mi. Didio	Farragher	Gore	E. Rishko	Mercer	Dassoulas	J. Marszal	Drab	Mc. Didio	S. Marszal
Saint Joseph's	Baseggio	L. Stolarick	Matey	Farragher	Radziul	Gore	Sturtevant	Baumgratz	J. Marszal	Muscolino	E. Rishko	S. Marszal
Kennesaw State	Baseggio	L. Stolarick	Matey	Farragher	Radziul	Gore	Sturtevant	Baumgratz	J. Marszal	Muscolino	E. Rishko	S. Marszal
Coastal Carolina	Baseggio	L. Stolarick	Matey	Farragher	Radziul	Gore	Sturtevant	Baumgratz	J. Marszal	Muscolino	E. Rishko	S. Marszal
at Queens	Baseggio	L. Stolarick	Matey	Farragher	Radziul	Gore	Sturtevant	Baumgratz	J. Marszal	Muscolino	E. Rishko	S. Marszal
at Liberty												

# delaware STAT LEADERS BY GAME

OPPONENT	GOALS	ASSISTS	POINTS	SOG	GB	CT	DC	SAVES
at Temple	Gore/E. Rishko (3)	Drab/J. Marszal (2)	Drab/Gore/E. Rishko (3)	E. Rishko (6)	Radziul/E. Rishko (3)	Radziul (3)	E. Rishko (9)	S. Marszal (5)
Rutgers	4 players (1)	Drab/J. Marszal (1)	6 players (1)	Porter/E. Rishko (3)	Baseggio (5)	Baseggio/Farragher (4)	4 players (1)	S. Marszal (8)
Navy	E. Rishko (3)	Sturtevant (2)	E. Rishko (3)	E. Rishko (6)	S. Marszal (3)	Farragher/E. Rishko (2)	E. Rishko (9)	S. Marszal (10)
UMBC	E. Rishko (4)	Craytor (2)	E. Rishko (4)	Gore/E. Rishko (6)	Farragher (3)	6 players (1)	Baumgratz/E. Rishko (8)	S. Marszal (10)
at Georgetown	E. Rishko (4)	Muscolino (4)	Muscolino (5)	E. Rishko (4)	Radziul (4)	3 players (2)	E. Rishko (2)	S. Marszal (10)
at Drexel	Sturtevant/E. Rishko (3)	7 players (1)	E. Rishko (4)	Sturtevant (4)	Radziul (4)	Radziul (5)	E. Rishko (4)	S. Marszal (6)
Mount St. Mary's	E. Rishko (4)	Muscolino (5)	E. Rishko (8)	E. Rishko (5)	5 players (2)	3 players (2)	Baumgratz (9)	S. Marszal (8)
at Austin Peay	Gore/J. Marszal (4)	Muscolino (3)	J. Marszal (6)	3 players (5)	6 players (2)	Baseggio (3)	Baumgratz (5)	S. Marszal (4)
at Lindenwood	Buono (5)	J. Marszal (6)	J. Marszal (8)	Buono (5)	Matey (3)	Baseggio/Radziul (2)	Baumgratz (6)	S. Marszal (3)
Jacksonville	Mc. Didio (4)	J. Marszal/Muscolino (3)	Mc. Didio/Muscolino (5)	Mc. Didio (4)	5 players (2)	E. Rishko (4)	E. Rishko (9)	S. Marszal (5)
Stetson	E. Rishko (6)	3 players (1)	E. Rishko (6)	E. Rishko (7)	J. Marszal/L. Stolarick (3)	E. Rishko (4)	E. Rishko (9)	S. Marszal (11)
Saint Joseph's	J. Marszal (4)	J. Marszal (4)	J. Marszal (8)	J. Marszal (4)	E. Rishko/Sturtevant (2)	Matey/E. Rishko (4)	Matey/E. Rishko (5)	S. Marszal (11)
Kennesaw State	E. Rishko (5)	J. Marszal (2)	E. Rishko (6)	E. Rishko (7)	Gore/L. Stolarick (4)	E. Rishko (6)	Baumgratz/E. Rishko (4)	S. Marszal (6)
Coastal Carolina	3 players (3)	Sturtevant (2)	E. Rishko (4)	E. Rishko (5)	Baseggio/Sturtevant (3)	Sturtevant (4)	Baumgratz (8)	S. Marszal (6)
at Queens	E. Rishko (4)	J. Marszal (8)	J. Marszal (10)	Gore/E. Rishko (4)	Radziul (4)	4 players (2)	Baumgratz (13)	S. Marszal (4)
at Liberty								



# delaware HIGHS AND LOWS

GAME HIGHS	2026	ALTIG ERA
Goals	25, at Lindenwood (3/21/26)	25, at Lindenwood (3/21/26)
Assists	17, at Lindenwood (3/21/26)	17, at Lindenwood (3/21/26)
Goals in a Quarter	9, at Lindenwood (3/21/26)	9, 3x, last Q3 at Lindenwood (3/21/26)
1H Goals	14, at Austin Peay (3/19/26)	14, at Austin Peay (3/19/26)
2H Goals	16, at Lindenwood (3/21/26)	16, at Lindenwood (3/21/26)
Shots Attempted	50, vs. Stetson (3/28/26)	50, vs. Stetson (3/28/26)
Shots on Goal	30, 2x, last vs. Stetson (3/28/26)	36, vs. Delaware State (2/24/21)
Ground Balls	26, vs. Kennesaw State (4/9/26)	33, vs. Lafayette (3/6/24)
Draw Controls	22, at Queens (4/16/26)	26, vs. Old Dominion (2/25/23)
Turnovers	22, at Temple (2/6/26)	28, vs. Old Dominion (2/25/23)
Caused Turnovers	18, vs. Kennesaw State (4/9/26)	26, vs. Lafayette (3/6/24)
Saves	10, 3x, last at Georgetown (3/7/26)	21, at Maryland (3/1/22)
Clears	21, vs. Kennesaw State (4/9/26)	27, vs. Lafayette (3/6/24)

GAME LOWS	2026	ALTIG ERA
Goals	4, vs. Rutgers (2/13/26)	2, at Maryland (3/1/22)
Assists	2, vs. Rutgers (2/13/26)	0, 2x, last at La Salle (2/27/21)
Goals in a Quarter	0, 4x, last Q3 at Georgetown (3/7/26)	0, 21x, last Q3 at Georgetown (3/7/26)
1H Goals	0, vs. Rutgers (2/13/26)	0, 3x, last vs. Rutgers (2/13/26)
2H Goals	3, vs. Navy (2/18/26)	1, 2x, last vs. Stony Brook (5/4/23)
Shots Attempted	20, vs. Navy (2/18/26)	7, at Stony Brook (4/6/24)
Shots on Goal	9, vs. Rutgers (2/13/26)	6, at Stony Brook (4/6/24)
Ground Balls	8, vs. Navy (2/18/26)	6, vs. Temple (2/20/21)
Draw Controls	3, at Georgetown (3/7/26)	3, at Georgetown (3/7/26)
Turnovers	8, vs. Stetson (3/28/26)	8, vs. Stetson (3/28/26)
Caused Turnovers	6, 2x, last vs. UMBC (3/4/26)	2, 2x, last at Stony Brook (3/18/23)
Saves	1, 2x, last vs. Saint Joseph's (4/1/26)	1, 2x, last vs. Saint Joseph's (4/1/26)
Clears	13, 3x, last vs. Stetson (3/28/26)	10, at Monmouth (3/30/25)

## PLAYER HIGHS UNDER ALTIG

Goals	6, 2x, last Ella Rishko vs. Stetson, 3/28/26
Assists	8, Jaclyn Marszal at Queens, 4/16/26
Points	10, Jaclyn Marszal at Queens, 4/16/26
Shots Attempted	13, Mia DeRuggiero, vs. Elon, 3/7/20
Shots on Goal	8, 3x, last Lizzie Hsu, at Hofstra, 4/8/23
Ground Balls	8, Madison Hranicka, vs. Lafayette, 3/6/24
Caused Turnovers	11, Madison Hranicka, vs. Lafayette, 3/6/24
Turnovers	7, Mia DeRuggiero, vs. Duquesne, 3/4/20
Draw Controls	15, Ella Rishko, at Towson, 4/13/25
Saves	18, Kate Brewster, at Rutgers, 2/15/20

opponent

# HIGHS AND LOWS

## GAME HIGHS

	2026	ALTIG ERA
Goals	15, vs. Navy (2/18/26)	20, 2x, last at Drexel (5/1/25)
Goals in a Quarter	6, Q4, at Temple (2/6/26)	9, Q3 vs. Stony Brook (5/4/23)
1H Goals	9, vs. Navy (2/18/26)	12, 3x, at Drexel (5/1/25)
2H Goals	9, at Temple (2/6/26)	11, 4x, last vs. Stony Brook (5/4/23)
Shots Attempted	30, vs. Navy (2/18/26)	46, vs. Hofstra (4/14/24)
Shots on Goal	21, vs. Navy (2/18/26)	36, at Maryland (3/1/22)
Ground Balls	18, at Temple (2/6/26)	30, vs. William & Mary (4/9/22)
Draw Controls	16, at Georgetown (3/7/26)	28, vs. Georgetown (3/8/25)
Turnovers	22, vs. Rutgers (2/13/26)	34, vs. Lafayette (3/6/24)
Caused Turnovers	15, at Temple (2/6/26)	19, vs. Lafayette (3/6/24)
Saves	14, vs. Stetson (3/28/26)	20, 2x, last at Old Dominion (3/26/22)
Clears	18, at Georgetown (3/7/26)	26, vs. Towson (3/24/24)

## GAME LOWS

	2026	ALTIG ERA
Goals	3, 2x, vs. Kennesaw State (4/9/26)	3, 3x, last vs. Kennesaw State (4/9/26)
Goals in a Quarter	0, 11x, last Q3 vs. Coastal Carolina (4/11/26)	0, 31x, last Q3 vs. Coastal Carolina (4/11/26)
1H Goals	0, at Austin Peay (3/19/26)	0, at Austin Peay (3/19/26)
2H Goals	0, vs. Mount St. Mary's (3/14/26)	0, 2x, last vs. Mount St. Mary's (3/14/26)
Shots Attempted	7, at Austin Peay (3/19/26)	7, at Austin Peay (3/19/26)
Shots on Goal	7, 2x, last vs. Stetson (3/28/26)	6, 2x, last vs. Lafayette (3/6/24)
Ground Balls	10, 2x, last at Austin Peay (3/19/26)	6, at Campbell (4/11/25)
Draw Controls	5, 2x, last vs. Kennesaw State (4/9/26)	2, vs. Towson (3/24/24)
Turnovers	8, vs. Navy (2/18/26)	7, at Stony Brook (3/18/23)
Caused Turnovers	3, at Austin Peay (3/19/26)	2, at Drexel (3/30/22)
Saves	3, at Georgetown (3/7/26)	2, at Stony Brook (4/6/24)
Clears	7, at Lindenwood (3/21/26)	7, 2x, last at Lindenwood (3/21/26)

## DELAWARE SINGLE GAME RECORDS

	INDIVIDUAL	TEAM
Goals	11, Ann Pasquariello, vs. Hofstra, 5/12/79	36, vs. Towson State, 4/24/86
Assists	9, 2x, last Mia DeRuggiero vs. Oregon 3/27/19	18, vs. Hofstra, 4/22/90
Points	16, Karen Emas, vs. Bucknell, 4/17/84	49, vs. Towson State, 4/24/86
Shots Attempted	--	65, vs. Towson State, 4/24/86
Shots on Goal	8, 3x, last Lizzie Hsu, at Hofstra, 4/8/23	36, vs. Delaware State, 2/24/21
Ground Balls	17, Lisa Blanc, vs. Lehigh, 5/8/83	88, vs. Bucknell, 4/18/87
Caused Turnovers	11, Madison Hranicka, vs. Lafayette, 3/6/24	26, vs. Lafayette, 3/6/24
Draw Controls	15, Ella Rishko, at Towson, 4/13/25	26, vs. Old Dominion, 2/25/23
Saves	36, Lisa McBeth, at West Chester, 5/5/78	36, vs. West Chester, 5/5/78

# LAST TIME A BLUE HEN

Scored 5 goals

Scored 6 goals

Scored 7 goals

Scored 8 goals

Scored 9 goals

Scored 10 or more goals

Tallied 5 assists

Tallied 6 assists

Tallied 7 assists

Tallied 8 assists

Tallied 9 assists

Had 5 points

Had 6 points

Had 7 points

Had 8 points

Had 9 points

Had 10 or more points

Had 5 or more caused turnovers

Had 10 or more caused turnovers

Had 5 or more ground balls

Had 10 or more ground balls

Won 5 or more draw controls

Won 10 or more draw controls

Made 10 or more saves

Made 15 or more saves

Made 20 or more saves

Ella Rishko vs. Kennesaw State, 4/9/26

Ella Rishko vs. Stetson, 3/28/26

N/A

Meghan Mulqueen vs. West Chester, 4/24/90

Casey Lyons at Lafayette, 2/17/15

Anne Wilkinson vs. James Madison, 3/27/86

Sophia Muscolino vs. Mount St. Mary's, 3/14/26

Jaclyn Marszal at Lindenwood, 3/21/26

Delaney McDaniel vs. Lafayette, 2/25/23

Jaclyn Marszal at Queens, 4/16/26

Mia DeRuggiero vs. Oregon, 3/27/19

Sophia Muscolino (3g, 2a) vs. Saint Joseph's, 4/1/26

Ella Rishko (5g, 1a) vs. Kennesaw State, 4/9/26

Sophia Muscolino (3g, 4a) at Lindenwood, 3/21/26

Jaclyn Marszal (4g, 4a) vs. Saint Joseph's, 4/1/26

Jaclyn Marszal vs. William & Mary, 3/30/24

Jaclyn Marszal (2g, 8a) at Queens, 4/16/26

Ella Rishko (6) vs. Kennesaw State, 4/9/26

Madison Hranicka (11) vs. Lafayette, 3/6/24

Kat Baseggio (5) vs. Rutgers, 2/13/26

N/A

Ella Rishko (7) at Queens, 4/16/26

Molly Baumgratz (13) at Queens, 4/16/26

Steph Marszal (10) at Georgetown, 3/7/26

Mercy McCarthy (16) vs. Stony Brook, 3/18/23

Kate Brewster (20) vs. Temple, 2/8/19

# LAST TIME DELAWARE

Scored 15 or more goals

Scored 15 or more goals in back-to-back games

Scored 15 or more goals in 3+ straight games

Scored 20 or more goals

Scored 25 or more goals

Scored 30 or more goals

Allowed 15 or more goals

Allowed 15 or more goals in back-to-back games

Allowed 20 or more goals

Allowed 25 or more goals

Allowed 30 or more goals

Had 10 or more assists

Had 15 or more assists

Won 20 or more draw controls

Won 25 or more draw controls

Scooped 25 or more ground balls

Scooped 30 or more ground balls

Scored 5 or more free-position goals

Recorded a shutout

Held an opponent scoreless for a half

Won in overtime

Lost in overtime

Had 2 players with a hat trick

Had 3 players with a hat trick

at Queens (W, 19-7), 4/16/26

at Austin Peay (W, 19-3), at Lindenwood (W, 25-7), 3/19-21/26

vs. Mount St. Mary's (W, 17-5), at Austin Peay (W, 19-3), at Lindenwood (W, 25-7), 3/14-21/26

vs. Delaware State (W, 20-3), 2/24/21

at Lindenwood (W, 25-7), 3/21/26

vs. Towson State (W, 36-2), 4/24/86

vs. #11/11/10 Navy (L, 15-10), 2/18/26

vs. Hofstra (L, 19-11), at Elon (L, 16-15), 4/14-20/24

vs. Drexel (L, 20-11), 5/1/25

N/A

N/A

at Queens (10), 4/16/26

at Lindenwood (17), 3/21/26

at Queens (22), 4/16/26

vs. Old Dominion (26), 2/25/23

vs. Elon (27), 3/7/20

vs. Wagner (32), 3/1/25

at Queens (6), 4/16/26

N/A

at Austin Peay (1st half), 3/19/26

vs. Monmouth (W, 13-12), 3/25/23

at William & Mary (L, 13-12), 4/1/23

McKenzie Didio (4), Morgan Gore (3) vs. Jacksonville, 3/26/26

Ella Rishko (4), Callie Drab (3), Morgan Gore (3) at Queens (10), 4/16/26

# delaware SEASON STATS

## 2026 University of Delaware Women's Lacrosse Overall Statistics (as of Apr 16, 2026)

Record:	Overall	Home	Away	Neutral
All Games	11-4	7-2	4-2	0-0
Conference	7-0	4-0	3-0	0-0
Non-Conference	4-4	3-2	1-2	0-0

Date	Opponent	WL	Score	Att.
2/06/26	at Temple	L	10-12	248
2/13/26	RUTGERS	L	4-12	293
2/18/26	NAVY	L	10-15	274
3/04/26	UMBC	W	16-8	219
3/07/26	at Georgetown	L	8-9	617
3/11/26	at Drexel	W	13-6	300
3/14/26	MOUNT ST. MARY'S	W	17-5	563
3/19/26	at Austin Peay	W	19-3	98
3/21/26	at Lindenwood (Mo)	W	25-7	146
3/26/26	JACKSONVILLE	W	14-13	639
3/28/26	STETSON	W	16-6	362
4/01/26	SAINT JOSEPH'S	W	13-12	314
4/09/26	KENNESAW ST.	W	16-3	575
4/11/26	COASTAL CAROLINA	W	14-10	510
4/16/26	at Queens	W	19-7	78

Team Statistics	DELAWARE	OPP
<b>SHOT STATISTICS</b>		
Goals-Shot Att.	214-475	128-288
Goals Per Game	14.27	8.53
Shot Pct.	.451	.444
Shots on Goal-Att.	331-475	215-288
SOG Pct.	.697	.747
Shots/Game	31.7	19.2
Assists	114	81
<b>FREE POSITION OPPORTUNITIES</b>		
Free Position Made-Att.	38-76	27-59
Free Position pct.	.500	.458
<b>GOAL BREAKDOWN</b>		
Total Goals	214	128
Free Position	38	27
Unassisted	100	47
Overtime	0	0
Goals Scored Avg	14.27	8.53
GROUND BALLS	253	218
DRAW CONTROLS	225	140
TURNOVERS	211	242
CAUSED TURNOVERS	167	130
CLEARS	233-262	217-274
Clear Pct.	.889	.792
SHOT CLOCK VIOLATIONS	8	9
<b>ATTENDANCE</b>		
Total	3,749	1,487
Dates-Avg Per Date	9/417	6/248
Neutral Site #-Avg	0/	

#	Player	GP	G	A	PTS	SH	GW	GB	DC	TO	CT	FOULS
32	Rishko, Ella	15	44	11	55	95	1	22	83	31	31	3
8	Marszal, Jaclyn	15	22	33	55	51	1	15	1	33	6	0
14	Muscolino, Sophia	12	18	26	44	47	1	9	0	17	0	0
17	Gore, Morgan	14	29	4	33	57	0	12	14	16	11	4
34	Sturtevant, Riley	15	19	7	26	35	2	16	0	9	14	3
10	Didio, McKenzie	14	18	2	20	34	1	4	0	3	0	0
16	Drab, Callie	15	13	7	20	22	1	8	0	20	1	2
19	Porter, Maggie	15	13	5	18	35	2	5	0	9	4	2
2	Buono, Grayson	14	8	8	16	17	0	5	9	6	5	1
23	Rishko, Lulu	15	11	2	13	41	2	11	6	8	8	2
13	Craytor, Maggie	15	8	3	11	13	0	4	0	4	0	0
7	Ciufo, Julia	12	5	3	8	13	0	6	0	4	2	0
33	O'Donnell, Sydney	14	5	1	6	13	0	5	1	3	4	3
15	MacMurray, Meg	5	1	1	2	1	0	0	0	0	0	0
29	Radziul, Kennedy	15	0	1	1	0	0	33	0	5	25	16
9	Baseggio, Kat	15	0	0	0	0	0	28	1	7	16	12
41	Baumgratz, Molly	15	0	0	0	0	0	0	70	5	3	1
42	Dassoulas, Ellie	2	0	0	0	0	0	0	0	1	0	0
37	Didio, Mia	3	0	0	0	0	0	0	0	0	0	0
28	Farragher, Maggie	15	0	0	0	0	0	18	2	5	14	12
12	Hussey, Erin	1	0	0	0	0	0	0	0	0	0	0
40	Marszal, Steph	15	0	0	0	0	0	17	0	1	1	0
22	Matey, Mary	15	0	0	0	1	0	13	31	5	7	10
21	Mercer, Kate	6	0	0	0	0	0	0	0	1	0	0
33	O'Donnell, Sydney	1	0	0	0	0	0	1	0	0	2	0
11	Reagan, Julia	2	0	0	0	0	0	0	0	0	0	0
18	Stolarick, Lena	15	0	0	0	0	0	21	4	7	13	8
TM	Team	15	0	0	0	0	0	3	11	0	2	
<b>Totals</b>		<b>15</b>	<b>214</b>	<b>114</b>	<b>328</b>	<b>475</b>	<b>11</b>	<b>253</b>	<b>225</b>	<b>211</b>	<b>167</b>	<b>81</b>
<b>Opponents</b>		<b>15</b>	<b>128</b>	<b>81</b>	<b>209</b>	<b>288</b>	<b>4</b>	<b>218</b>	<b>140</b>	<b>242</b>	<b>130</b>	<b>107</b>

#	Goalie	GP	MIN	GA	GAA	SAVE	PCT	W-L-T
40	Marszal, Steph	15	900:00	128	8.53	87	.405	11-4-0
<b>Totals</b>		<b>15</b>	<b>900:00</b>	<b>128</b>	<b>8.53</b>	<b>87</b>	<b>.405</b>	<b>11-4-0</b>
<b>Opponents</b>		<b>22</b>	<b>900:00</b>	<b>214</b>	<b>14.27</b>	<b>117</b>	<b>.353</b>	<b>4-11-0</b>

Goals by Period	1st	2nd	3rd	4th	Total
Delaware	51	61	49	53	214
Opponents	29	36	26	37	128

Saves by Period	1st	2nd	3rd	4th	Total
Delaware	26	19	20	22	87
Opponents	31	35	28	23	117

Shots by Period	1st	2nd	3rd	4th	Total
Delaware	113	137	113	112	475
Opponents	68	76	70	74	288

Shot on Goal	1st	2nd	3rd	4th	Total
Delaware	75	83	65	65	288
Opponents	45	44	40	48	177

# delaware NCAA RANKINGS

Statistic	National Rank	Conference Rank	Value	National Leader	Value	Conference Leader	Value
Assists Per Game (120 ranked)	20	2	7.60	Massachusetts	10.60	Jacksonville	7.87
Assists Per Game (0 ranked)							
Caused Turnovers Per Game (120 ranked)	15	2	11.13	Liberty	16.13	Liberty	16.13
Clearing Percentage (120 ranked)	45	3	0.889	North Carolina	0.972	Jacksonville	0.920
Draw Control Percentage (120 ranked)	9	2	0.616	Loyola Maryland	0.676	Jacksonville	0.624
Draw Controls Per Game (119 ranked)	15	2	15.00	Loyola Maryland	17.44	Jacksonville	15.60
Face-Off Win Percentage (0 ranked)							
Fouls Per Game (120 ranked)	25	1	5.40	LIU	1.80	Delaware	5.40
Free Position Percentage (120 ranked)	27	1	0.500	Dartmouth	0.636	Delaware	0.500
Ground Balls Per Game (120 ranked)	26	2	16.87	Wofford	20.87	Liberty	20.44
Points Per Game (120 ranked)	17	2	21.87	Massachusetts	27.67	Jacksonville	22.13
Red Cards (1 ranked)				Longwood Youngstown St.	1 1		
Saves Percentage (120 ranked)	86	6	0.405	Maryland	0.520	Coastal Carolina	0.466
Scoring Defense (120 ranked)	19	1	8.53	Colorado	6.43	Delaware	8.53
Scoring Margin (67 ranked)	14	1	5.73	North Carolina	11.71	Delaware	5.73
Scoring Offense (120 ranked)	19	1	14.27	North Carolina	18.86	Delaware Jacksonville	14.27 14.27
Shot Percentage (120 ranked)	31	3	0.451	Clemson	0.520	Jacksonville	0.486
Shots Per Game (120 ranked)	13	1	31.67	North Carolina	37.00	Delaware	31.67
Shots on Goal Per Game (120 ranked)	24	2	22.07	North Carolina	27.21	Jacksonville	22.60
Turnovers Per Game (120 ranked)	54	2	14.07	Florida Georgetown	10.40 10.40	Jacksonville	13.73
Win Percentage (120 ranked)	20	1	0.733	Navy	0.938	Delaware	0.733
Yellow Cards (117 ranked)	94	8	15	Xavier	34	Kennesaw St.	25

# delaware NCAA RANKINGS

Statistic	Player	National Rank	Conference Rank	Value	National Leader	Value	Conference Leader	Value
Assists (140 ranked)	Jaelyn Marszal	27	1	33	Alexa Spallina, Clemson	64	Jaelyn Marszal, Delaware	33
	Sophia Muscolino	55	4	26				
Assists Per Game (147 ranked)	Jaelyn Marszal	33	1	2.20	Gracin Emerson, Duquesne	4.36	Jaelyn Marszal, Delaware	2.20
	Sophia Muscolino	35	2	2.17				
Caused Turnovers Per Game (149 ranked)	Ella Rishko	29	2	2.07	Reagan O'Brien, Johns Hopkins	4.79	Lauren Dobbs, Kennesaw St.	2.38
	Kennedy Radziul	67	6	1.67				
Draw Controls Per Game (149 ranked)	Ella Rishko	47	5	5.53	Anna Vigilone, Arizona St.	13.00	Abby Moran, Jacksonville	10.60
	Molly Baumgratz	61	6	4.67				
Face-Off Win Percentage (0 ranked)								
Free Position Goals Per Game (142 ranked)	Ella Rishko	57	3	0.60	Caroline Keil, Denver	1.27	Jessica Giller, Jacksonville	0.87
	Morgan Gore	100	6	0.50				
Free Position Percentage (104 ranked)	Morgan Gore	44	4	0.500	Jessica Giller, Jacksonville	0.765	Jessica Giller, Jacksonville	0.765
Goals (144 ranked)	Ella Rishko	34	1	44	Chloe Humphrey, North Carolina	79	Ella Rishko, Delaware	44
Goals Per Game (148 ranked)	Ella Rishko	35	1	2.93	Chloe Humphrey, North Carolina	5.64	Ella Rishko, Delaware	2.93
Goals-Against Average (114 ranked)	Steph Marszal	15	1	8.53	Elena Oh, Colorado	6.40	Steph Marszal, Delaware	8.53
Ground Balls Per Game (148 ranked)	Kennedy Radziul	75	7	2.20	Emma Anderson, Gardner-Webb	5.00	Taylor Coughlin, Lindenwood	2.80
Points (145 ranked)	Jaelyn Marszal	83	5	55	Chloe Humphrey, North Carolina	112	Maeve Brennan, Jacksonville	64
	Ella Rishko	83	5	55				
Points Per Game (150 ranked)	Jaelyn Marszal	82	5	3.67	Chloe Humphrey, North Carolina	8.00	Maeve Brennan, Jacksonville	4.27
	Ella Rishko	82	5	3.67				
	Sophia Muscolino	82	5	3.67				
Save Percentage (114 ranked)	Steph Marszal	79	5	0.405	JJ Suriano, Maryland	0.520	Charlotte Sadler, Coastal Carolina	0.473
Saves (150 ranked)	Steph Marszal	93	6	87	Haley Richards, Louisville	179	Maddie Eckert, Stetson	146
Saves Per Game (114 ranked)	Steph Marszal	98	7	5.80	Haley Richards, Louisville	11.93	Maddie Eckert, Stetson	9.73
Shot Percentage (149 ranked)	Morgan Gore	73	3	0.509	Emma Raines, Duquesne	0.653	Maeve Brennan, Jacksonville	0.566
Shots Per Game (150 ranked)	Ella Rishko	38	2	6.33	Chloe Humphrey, North Carolina	10.43	Kayleen Favreau, Queens (NC)	7.13
Shots on Goal Per Game (150 ranked)	Ella Rishko	46	2	4.47	Chloe Humphrey, North Carolina	7.93	Luci Selander, Lindenwood	4.56

**#1 STELLA STOLARICK | A | SO. | HADDONFIELD, N.J.**

CAREER-HIGHS		SEASON-HIGHS		CAREER STATS								
GOALS	N/A	GOALS	N/A	YEAR	GP/GS	G	A	PTS	SOG	GB	CT	DC
ASSISTS	N/A	ASSISTS	N/A	2025	0/0	0	0	0	0	0	0	0
POINTS	N/A	POINTS	N/A	2026	0/0	0	0	0	0	0	0	0
SHOTS ON GOAL	N/A	SHOTS ON GOAL	N/A	<b>TOTAL</b>	<b>0/0</b>	<b>0</b>	<b>0</b>	<b>0</b>	<b>0</b>	<b>0</b>	<b>0</b>	<b>0</b>
GROUND BALLS	N/A	GROUND BALLS	N/A									
CAUSED TURNOVERS	N/A	CAUSED TURNOVERS	N/A									
DRAW CONTROLS	N/A	DRAW CONTROLS	N/A									

**#2 GRAYSON BUONO | A | SO. | WAYNE, PA.**

CAREER-HIGHS		SEASON-HIGHS		CAREER STATS								
GOALS	5, at Lindenwood, 3/21/26	GOALS	5, at Lindenwood, 3/21/26	YEAR	GP/GS	G	A	PTS	SOG	GB	CT	DC
ASSISTS	2, at Austin Peay, 3/19/26	ASSISTS	2, at Austin Peay, 3/19/26	2025	13/2	0	0	0	0	0	1	21
POINTS	5, at Lindenwood, 3/21/26	POINTS	5, at Lindenwood, 3/21/26	2026	14/0	8	8	16	12	5	5	9
SHOTS ON GOAL	5, at Lindenwood, 3/21/26	SHOTS ON GOAL	5, at Lindenwood, 3/21/26	<b>TOTAL</b>	<b>27/2</b>	<b>8</b>	<b>8</b>	<b>16</b>	<b>12</b>	<b>5</b>	<b>6</b>	<b>30</b>
GROUND BALLS	3, vs. Kennesaw State, 4/9/26	GROUND BALLS	3, vs. Kennesaw State, 4/9/26									
CAUSED TURNOVERS	2, at Austin Peay, 3/19/26	CAUSED TURNOVERS	2, at Austin Peay, 3/19/26									
DRAW CONTROLS	5, vs. Stony Brook, 3/23/25	DRAW CONTROLS	4, vs. Stetson, 3/28/26									

**#3 LARA HOEFLICH | D | SO. | GLENELG, MD.**

CAREER-HIGHS		SEASON-HIGHS		CAREER STATS								
GOALS	N/A	GOALS	N/A	YEAR	GP/GS	G	A	PTS	SOG	GB	CT	DC
ASSISTS	N/A	ASSISTS	N/A	2025	2/0	0	0	0	0	0	1	0
POINTS	N/A	POINTS	N/A	2026	0/0	0	0	0	0	0	0	0
SHOTS ON GOAL	N/A	SHOTS ON GOAL	N/A	<b>TOTAL</b>	<b>2/0</b>	<b>0</b>	<b>0</b>	<b>0</b>	<b>0</b>	<b>0</b>	<b>1</b>	<b>0</b>
GROUND BALLS	N/A	GROUND BALLS	N/A									
CAUSED TURNOVERS	1, vs. Temple, 2/7/25	CAUSED TURNOVERS	N/A									
DRAW CONTROLS	N/A	DRAW CONTROLS	N/A									

**#4 MARIN MOONEY | A | FR. | VILLANOVA, PA.**

CAREER-HIGHS		SEASON-HIGHS		CAREER STATS								
GOALS	N/A	GOALS	N/A	YEAR	GP/GS	G	A	PTS	SOG	GB	CT	DC
ASSISTS	N/A	ASSISTS	N/A	2026	0/0	0	0	0	0	0	0	0
POINTS	N/A	POINTS	N/A	<b>TOTAL</b>	<b>0/0</b>	<b>0</b>	<b>0</b>	<b>0</b>	<b>0</b>	<b>0</b>	<b>0</b>	<b>0</b>
SHOTS ON GOAL	N/A	SHOTS ON GOAL	N/A									
GROUND BALLS	N/A	GROUND BALLS	N/A									
CAUSED TURNOVERS	N/A	CAUSED TURNOVERS	N/A									
DRAW CONTROLS	N/A	DRAW CONTROLS	N/A									

**#6 JENNY GREEN | D | FR. | GARNET VALLEY, PA.**

CAREER-HIGHS		SEASON-HIGHS	
GOALS	N/A	GOALS	N/A
ASSISTS	N/A	ASSISTS	N/A
POINTS	N/A	POINTS	N/A
SHOTS ON GOAL	N/A	SHOTS ON GOAL	N/A
GROUND BALLS	N/A	GROUND BALLS	N/A
CAUSED TURNOVERS	N/A	CAUSED TURNOVERS	N/A
DRAW CONTROLS	N/A	DRAW CONTROLS	N/A

CAREER STATS								
YEAR	GP/GS	G	A	PTS	SOG	GB	CT	DC
2026	0/0	0	0	0	0	0	0	0
<b>TOTAL</b>	<b>0/0</b>	<b>0</b>	<b>0</b>	<b>0</b>	<b>0</b>	<b>0</b>	<b>0</b>	<b>0</b>

**#7 JULIA CIUFO | M | JR. | REISTERSTOWN, MD.**

CAREER-HIGHS		SEASON-HIGHS	
GOALS	2, at Queens, 4/16/26	GOALS	2, at Queens, 4/16/26
ASSISTS	1, 3x, last vs. Mount St. Mary's, 3/14/26	ASSISTS	1, 3x, last vs. Mount St. Mary's, 3/14/26
POINTS	2, vs. Mount St. Mary's, 3/14/26	POINTS	2, vs. Mount St. Mary's, 3/14/26
SHOTS ON GOAL	2, 2x, last at Queens, 4/16/26	SHOTS ON GOAL	2, 2x, last at Queens, 4/16/26
GROUND BALLS	3, at Temple, 2/21/24	GROUND BALLS	2, vs. Kennesaw State, 4/9/26
CAUSED TURNOVERS	1, 4x, last at Lindenwood, 3/21/26	CAUSED TURNOVERS	1, 2x, last at Lindenwood, 3/21/26
DRAW CONTROLS	N/A	DRAW CONTROLS	N/A

CAREER STATS								
YEAR	GP/GS	G	A	PTS	SOG	GB	CT	DC
2024	4/0	1	0	1	3	4	2	0
2025	0/0	0	0	0	0	0	0	0
2026	12/0	5	3	8	8	6	2	0
<b>TOTAL</b>	<b>16/0</b>	<b>6</b>	<b>3</b>	<b>9</b>	<b>11</b>	<b>10</b>	<b>4</b>	<b>0</b>

**#8 JACLYN MARSZAL | A | SR. | CATONSVILLE, MD.**

CAREER-HIGHS		SEASON-HIGHS	
GOALS	5, at Lehigh, 2/9/24	GOALS	4, 2x, last vs. Saint Joseph's, 4/1/26
ASSISTS	8, at Queens, 4/16/26	ASSISTS	8, at Queens, 4/16/26
POINTS	10, at Queens, 4/16/26	POINTS	10, at Queens, 4/16/26
SHOTS ON GOAL	6, 2x, last vs. Drexel, 3/21/25	SHOTS ON GOAL	5, at Austin Peay, 3/19/26
GROUND BALLS	4, 2x, last at Mount St. Mary's, 2/22/25	GROUND BALLS	3, vs. Stetson, 3/28/26
CAUSED TURNOVERS	1, 11x, last vs. Coastal Carolina, 4/11/26	CAUSED TURNOVERS	1, 6x, last vs. Coastal Carolina, 4/11/26
DRAW CONTROLS	1, 3x, last at Lindenwood, 3/21/26	DRAW CONTROLS	1, at Lindenwood, 3/21/26

CAREER STATS								
YEAR	GP/GS	G	A	PTS	SOG	GB	CT	DC
2023*	5/0	2	0	2	3	0	0	0
2024	16/15	25	22	47	36	19	4	2
2025	16/8	21	29	50	44	14	1	0
2026	15/14	22	33	55	34	15	6	1
<b>UD</b>	<b>47/37</b>	<b>68</b>	<b>84</b>	<b>152</b>	<b>114</b>	<b>48</b>	<b>11</b>	<b>3</b>
<b>TOTAL</b>	<b>52/37</b>	<b>70</b>	<b>84</b>	<b>154</b>	<b>117</b>	<b>48</b>	<b>11</b>	<b>3</b>

\* at Notre Dame

**#9 KAT BASEGGIO | D | JR. | GUILFORD, CONN.**

CAREER-HIGHS		SEASON-HIGHS	
GOALS	N/A	GOALS	N/A
ASSISTS	N/A	ASSISTS	N/A
POINTS	N/A	POINTS	N/A
SHOTS ON GOAL	N/A	SHOTS ON GOAL	N/A
GROUND BALLS	5, vs. Rutgers, 2/13/26	GROUND BALLS	5, vs. Rutgers, 2/13/26
CAUSED TURNOVERS	4, 2x, last vs. Rutgers, 2/13/26	CAUSED TURNOVERS	4, vs. Rutgers, 2/13/26
DRAW CONTROLS	1, 2x, last vs. Coastal Carolina, 4/11/26	DRAW CONTROLS	1, vs. Coastal Carolina, 4/11/26

CAREER STATS								
YEAR	GP/GS	G	A	PTS	SOG	GB	CT	DC
2024	16/15	0	0	0	0	14	5	0
2025	16/16	0	0	0	0	29	23	1
2026	15/14	0	0	0	0	28	16	1
<b>TOTAL</b>	<b>47/45</b>	<b>0</b>	<b>0</b>	<b>0</b>	<b>0</b>	<b>71</b>	<b>44</b>	<b>2</b>

**#10 MCKENZIE DIDIO | A | SR. | WESTPORT, CONN.**

CAREER-HIGHS	SEASON-HIGHS
GOALS 4, vs. Jacksonville, 3/26/26	GOALS 4, vs. Jacksonville, 3/26/26
ASSISTS 1, 2x, last vs. Jacksonville, 3/26/26	ASSISTS 1, 2x, last vs. Jacksonville, 3/26/26
POINTS 5, vs. Jacksonville, 3/26/26	POINTS 5, vs. Jacksonville, 3/26/26
SHOTS ON GOAL 5, vs. Old Dominion, 2/25/23	SHOTS ON GOAL 4, vs. Jacksonville, 3/26/26
GROUND BALLS 1, 6x, last vs. Stetson, 3/28/26	GROUND BALLS 1, 4x, last vs. Stetson, 3/28/26
CAUSED TURNOVERS N/A	CAUSED TURNOVERS N/A
DRAW CONTROLS N/A	DRAW CONTROLS N/A

CAREER STATS								
YEAR	GP/GS	G	A	PTS	SOG	GB	CT	DC
2023	16/1	10	0	10	23	1	0	0
2024	9/0	5	0	5	8	1	0	0
2025	2/0	0	0	0	0	0	0	0
2026	14/1	18	2	20	25	4	0	0
<b>TOTAL</b>	<b>41/2</b>	<b>33</b>	<b>2</b>	<b>35</b>	<b>56</b>	<b>6</b>	<b>0</b>	<b>0</b>

**#11 JULIA REAGAN | M | SR. | EAST ATLANTIC BEACH, N.Y.**

CAREER-HIGHS	SEASON-HIGHS
GOALS N/A	GOALS N/A
ASSISTS N/A	ASSISTS N/A
POINTS N/A	POINTS N/A
SHOTS ON GOAL N/A	SHOTS ON GOAL N/A
GROUND BALLS N/A	GROUND BALLS N/A
CAUSED TURNOVERS N/A	CAUSED TURNOVERS N/A
DRAW CONTROLS 1, at Denver, 3/13/23	DRAW CONTROLS N/A

CAREER STATS								
YEAR	GP/GS	G	A	PTS	SOG	GB	CT	DC
2023	1/0	0	0	0	0	0	0	1
2024	0/0	0	0	0	0	0	0	0
2025	0/0	0	0	0	0	0	0	0
2026	2/1	0	0	0	0	0	0	0
<b>TOTAL</b>	<b>3/1</b>	<b>0</b>	<b>0</b>	<b>0</b>	<b>0</b>	<b>0</b>	<b>0</b>	<b>1</b>

**#12 ERIN HUSSEY | M | FR. | SEVERNA PARK, MD.**

CAREER-HIGHS	SEASON-HIGHS
GOALS N/A	GOALS N/A
ASSISTS N/A	ASSISTS N/A
POINTS N/A	POINTS N/A
SHOTS ON GOAL N/A	SHOTS ON GOAL N/A
GROUND BALLS N/A	GROUND BALLS N/A
CAUSED TURNOVERS N/A	CAUSED TURNOVERS N/A
DRAW CONTROLS N/A	DRAW CONTROLS N/A

CAREER STATS								
YEAR	GP/GS	G	A	PTS	SOG	GB	CT	DC
2026	0/0	0	0	0	0	0	0	0
<b>TOTAL</b>	<b>0/0</b>	<b>0</b>	<b>0</b>	<b>0</b>	<b>0</b>	<b>0</b>	<b>0</b>	<b>0</b>

**#13 MAGGIE CRAYTOR | A | SO. | CHARLOTTESVILLE, VA.**

CAREER-HIGHS	SEASON-HIGHS
GOALS 3, 2x, last at Lindenwood, 3/21/26	GOALS 3, at Lindenwood, 3/21/26
ASSISTS 2, vs. UMBC, 3/4/26	ASSISTS 2, vs. UMBC, 3/4/26
POINTS 4, at Lindenwood, 3/21/26	POINTS 4, at Lindenwood, 3/21/26
SHOTS ON GOAL 3, 3x, last at Lindenwood, 3/21/26	SHOTS ON GOAL 3, at Lindenwood, 3/21/26
GROUND BALLS 2, at Austin Peay, 3/19/26	GROUND BALLS 2, at Austin Peay, 3/19/26
CAUSED TURNOVERS 1, vs. Temple, 2/7/25	CAUSED TURNOVERS N/A
DRAW CONTROLS N/A	DRAW CONTROLS N/A

CAREER STATS								
YEAR	GP/GS	G	A	PTS	SOG	GB	CT	DC
2025	7/0	5	0	5	10	1	1	0
2026	15/0	8	3	11	9	4	0	0
<b>TOTAL</b>	<b>22/0</b>	<b>13</b>	<b>3</b>	<b>16</b>	<b>19</b>	<b>5</b>	<b>1</b>	<b>0</b>

**#14 SOPHIA MUSCOLINO | A | JR. | BALDWINVILLE, N.Y.**

CAREER-HIGHS	SEASON-HIGHS
GOALS 3, 2x, last vs. Saint Joseph's, 4/1/26	GOALS 3, 2x, last vs. Saint Joseph's, 4/1/26
ASSISTS 5, vs. Mount St. Mary's, 3/14/26	ASSISTS 5, vs. Mount St. Mary's, 3/14/26
POINTS 7, 2x, last at Lindenwood, 3/21/26	POINTS 7, 2x, last at Lindenwood, 3/21/26
SHOTS ON GOAL 5, vs. Stetson, 3/28/26	SHOTS ON GOAL 5, vs. Stetson, 3/28/26
GROUND BALLS 2, 3x, last vs. Stetson, 3/28/26	GROUND BALLS 2, 3x, last vs. Stetson, 3/28/26
CAUSED TURNOVERS N/A	CAUSED TURNOVERS N/A
DRAW CONTROLS N/A	DRAW CONTROLS N/A

CAREER STATS								
YEAR	GP/GS	G	A	PTS	SOG	GB	CT	DC
2024	8/0	2	1	3	2	2	0	0
2025	10/0	2	0	2	4	1	0	0
2026	12/11	18	26	44	34	9	0	0
<b>TOTAL</b>	<b>30/11</b>	<b>22</b>	<b>27</b>	<b>49</b>	<b>40</b>	<b>12</b>	<b>0</b>	<b>0</b>

**#15 MEG MACMURRAY | A | SO. | CHESTER SPRINGS, PA.**

CAREER-HIGHS	SEASON-HIGHS
GOALS 1, at Lindenwood, 3/21/26	GOALS 1, at Lindenwood, 3/21/26
ASSISTS 1, at Austin Peay, 3/19/26	ASSISTS 1, at Austin Peay, 3/19/26
POINTS 1, 2x, last at Lindenwood, 3/21/26	POINTS 1, 2x, last at Lindenwood, 3/21/26
SHOTS ON GOAL 1, at Lindenwood, 3/21/26	SHOTS ON GOAL 1, at Lindenwood, 3/21/26
GROUND BALLS N/A	GROUND BALLS N/A
CAUSED TURNOVERS N/A	CAUSED TURNOVERS N/A
DRAW CONTROLS N/A	DRAW CONTROLS N/A

CAREER STATS								
YEAR	GP/GS	G	A	PTS	SOG	GB	CT	DC
2025 *	0/0	0	0	0	0	0	0	0
2026	5/0	1	1	2	1	0	0	0
<b>UD</b>	<b>5/0</b>	<b>1</b>	<b>1</b>	<b>2</b>	<b>1</b>	<b>0</b>	<b>0</b>	<b>0</b>
<b>TOTAL</b>	<b>5/0</b>	<b>1</b>	<b>1</b>	<b>2</b>	<b>1</b>	<b>0</b>	<b>0</b>	<b>0</b>

\* AT MARYLAND

**#16 CALLIE DRAB | A | SR. | SUFFERN, N.Y.**

CAREER-HIGHS	SEASON-HIGHS
GOALS 3, 3x, last at Queens, 4/16/26	GOALS 3, at Queens, 4/16/26
ASSISTS 3, at William & Mary, 3/30/24	ASSISTS 2, at Temple, 2/7/26
POINTS 5, at UMBC, 3/5/25	POINTS 3, 3x, last at Queens, 4/16/26
SHOTS ON GOAL 4, 2x, last vs. Georgetown, 3/8/25	SHOTS ON GOAL 3, at Queens, 4/16/26
GROUND BALLS 3, 2x, last vs. Wagner, 3/1/25	GROUND BALLS 2, at Austin Peay, 3/19/26
CAUSED TURNOVERS 1, 5x, last at Queens, 4/16/26	CAUSED TURNOVERS 1, at Queens, 4/16/26
DRAW CONTROLS N/A	DRAW CONTROLS N/A

CAREER STATS								
YEAR	GP/GS	G	A	PTS	SOG	GB	CT	DC
2023	3/0	1	0	1	2	0	0	0
2024	16/0	13	9	22	17	7	2	0
2025	16/8	13	11	24	23	7	2	0
2026	15/3	13	7	20	16	8	1	0
<b>TOTAL</b>	<b>50/11</b>	<b>40</b>	<b>27</b>	<b>67</b>	<b>58</b>	<b>22</b>	<b>5</b>	<b>0</b>

**#17 MORGAN GORE | M | SR. | CROFTON, MD.**

CAREER-HIGHS	SEASON-HIGHS
GOALS 4, 2x, last at Austin Peay, 3/19/26	GOALS 4, at Austin Peay, 3/19/26
ASSISTS 1, 1lx, last vs. Stetson, 3/28/26	ASSISTS 1, 4x, last vs. Stetson, 3/28/26
POINTS 5, 2x, last at Austin Peay, 3/19/26	POINTS 5, at Austin Peay, 3/19/26
SHOTS ON GOAL 6, vs. UMBC, 3/4/26	SHOTS ON GOAL 6, vs. UMBC, 3/4/26
GROUND BALLS 4, 2x, last vs. Kennesaw State, 4/9/26	GROUND BALLS 4, vs. Kennesaw State, 4/9/26
CAUSED TURNOVERS 3, vs. Kennesaw State, 4/9/26	CAUSED TURNOVERS 3, vs. Kennesaw State, 4/9/26
DRAW CONTROLS 5, at Temple, 2/7/26	DRAW CONTROLS 5, at Temple, 2/7/26

CAREER STATS								
YEAR	GP/GS	G	A	PTS	SOG	GB	CT	DC
2023	16/1	15	4	19	19	11	2	9
2024	16/15	17	1	18	29	8	5	14
2025	16/15	30	2	32	43	20	10	15
2026	14/14	29	4	33	40	12	11	14
<b>TOTAL</b>	<b>62/45</b>	<b>91</b>	<b>11</b>	<b>102</b>	<b>131</b>	<b>51</b>	<b>28</b>	<b>52</b>

**#18 LENA STOLARICK | D | SO. | HADDONFIELD, N.J.**

CAREER-HIGHS		SEASON-HIGHS	
GOALS	N/A	GOALS	N/A
ASSISTS	N/A	ASSISTS	N/A
POINTS	N/A	POINTS	N/A
SHOTS ON GOAL	N/A	SHOTS ON GOAL	N/A
GROUND BALLS	4, 2x, last vs. Kennesaw State, 4/9/26	GROUND BALLS	4, vs. Kennesaw State, 4/9/26
CAUSED TURNOVERS	4, vs. Kennesaw State, 4/9/26	CAUSED TURNOVERS	4, vs. Kennesaw State, 4/9/26
DRAW CONTROLS	2, at Towson, 4/13/25	DRAW CONTROLS	1, 4x, last vs. Kennesaw State, 4/9/26

CAREER STATS								
YEAR	GP/GS	G	A	PTS	SOG	GB	CT	DC
2025	13/4	0	0	0	0	10	8	3
2026	15/14	0	0	0	0	21	13	4
<b>TOTAL</b>	<b>28/18</b>	<b>0</b>	<b>0</b>	<b>0</b>	<b>0</b>	<b>31</b>	<b>21</b>	<b>7</b>

**#19 MAGGIE PORTER | A | FR. | STEVENSON, MD.**

CAREER-HIGHS		SEASON-HIGHS	
GOALS	2, 3x, last vs. Coastal Carolina, 4/11/26	GOALS	2, 3x, last vs. Coastal Carolina, 4/11/26
ASSISTS	1, 5x, last vs. Kennesaw State, 4/9/26	ASSISTS	1, 5x, last vs. Kennesaw State, 4/9/26
POINTS	3, vs. Kennesaw State, 4/9/26	POINTS	3, vs. Kennesaw State, 4/9/26
SHOTS ON GOAL	3, vs. Rutgers, 2/13/26	SHOTS ON GOAL	3, vs. Rutgers, 2/13/26
GROUND BALLS	2, vs. Stetson, 3/28/26	GROUND BALLS	2, vs. Stetson, 3/28/26
CAUSED TURNOVERS	2, vs. Mount St. Mary's, 3/14/26	CAUSED TURNOVERS	2, vs. Mount St. Mary's, 3/14/26
DRAW CONTROLS	N/A	DRAW CONTROLS	N/A

CAREER STATS								
YEAR	GP/GS	G	A	PTS	SOG	GB	CT	DC
2026	15/2	13	5	18	25	5	4	0
<b>TOTAL</b>	<b>15/2</b>	<b>13</b>	<b>5</b>	<b>18</b>	<b>25</b>	<b>5</b>	<b>4</b>	<b>0</b>

**#20 SAM PARADISE | M | JR. | PERRY HALL, MD.**

CAREER-HIGHS		SEASON-HIGHS	
GOALS	4, vs. Georgetown, 3/8/25	GOALS	N/A
ASSISTS	2, vs. Temple, 2/7/25	ASSISTS	N/A
POINTS	4, vs. Georgetown, 3/8/25	POINTS	N/A
SHOTS ON GOAL	4, 3x, last vs. Georgetown, 3/8/25	SHOTS ON GOAL	N/A
GROUND BALLS	2, vs. Georgetown, 3/8/25	GROUND BALLS	N/A
CAUSED TURNOVERS	2, 2x, last vs. Georgetown, 3/8/25	CAUSED TURNOVERS	N/A
DRAW CONTROLS	9, vs. Temple, 2/7/25	DRAW CONTROLS	N/A

CAREER STATS								
YEAR	GP/GS	G	A	PTS	SOG	GB	CT	DC
2024	16/3	8	0	8	13	6	4	11
2025	9/9	12	2	14	21	5	4	29
2026	0/0	0	0	0	0	0	0	0
<b>TOTAL</b>	<b>25/12</b>	<b>20</b>	<b>2</b>	<b>22</b>	<b>34</b>	<b>11</b>	<b>8</b>	<b>40</b>

**#21 KATE MERCER | D | SR. | KATONAH, N.Y.**

CAREER-HIGHS		SEASON-HIGHS	
GOALS	N/A	GOALS	N/A
ASSISTS	N/A	ASSISTS	N/A
POINTS	N/A	POINTS	N/A
SHOTS ON GOAL	N/A	SHOTS ON GOAL	N/A
GROUND BALLS	N/A	GROUND BALLS	N/A
CAUSED TURNOVERS	N/A	CAUSED TURNOVERS	N/A
DRAW CONTROLS	3, 2x, last vs. Georgetown, 3/8/25	DRAW CONTROLS	N/A

CAREER STATS								
YEAR	GP/GS	G	A	PTS	SOG	GB	CT	DC
2023	2/0	0	0	0	0	0	0	0
2024	4/0	0	0	0	0	0	0	0
2025	7/0	0	0	0	0	0	0	8
2026	6/1	0	0	0	0	0	0	0
<b>TOTAL</b>	<b>18/1</b>	<b>0</b>	<b>0</b>	<b>0</b>	<b>0</b>	<b>0</b>	<b>0</b>	<b>8</b>

**#22 MARY MATEY | D | JR. | PHOENIXVILLE, PA.**

CAREER-HIGHS		SEASON-HIGHS	
GOALS	N/A	GOALS	N/A
ASSISTS	N/A	ASSISTS	N/A
POINTS	N/A	POINTS	N/A
SHOTS ON GOAL	N/A	SHOTS ON GOAL	N/A
GROUND BALLS	3, at Lindenwood, 3/21/26	GROUND BALLS	3, at Lindenwood, 3/21/26
CAUSED TURNOVERS	3, vs. Saint Joseph's, 4/1/26	CAUSED TURNOVERS	3, vs. Saint Joseph's, 4/1/26
DRAW CONTROLS	5, 3x, last vs. Coastal Carolina, 4/11/26	DRAW CONTROLS	5, 3x, last vs. Coastal Carolina, 4/11/26

CAREER STATS								
YEAR	GP/GS	G	A	PTS	SOG	GB	CT	DC
2024	0/0	0	0	0	0	0	0	0
2025	7/1	0	0	0	0	0	1	0
2026	15/14	0	0	0	0	13	7	31
<b>TOTAL</b>	<b>22/15</b>	<b>0</b>	<b>0</b>	<b>0</b>	<b>0</b>	<b>13</b>	<b>8</b>	<b>31</b>

**#23 LULU RISHKO | M | SO. | REHOBOTH BEACH, DEL.**

CAREER-HIGHS		SEASON-HIGHS	
GOALS	2, 5x, last vs. Mount St. Mary's, 3/14/26	GOALS	2, 3x, last vs. Mount St. Mary's, 3/14/26
ASSISTS	1, 5x, last vs. UMBC, 3/4/26	ASSISTS	1, vs. UMBC, 3/4/26
POINTS	3, 2x, last vs. UMBC, 3/4/26	POINTS	3, vs. UMBC, 3/4/26
SHOTS ON GOAL	4, 2x, last vs. Mount St. Mary's, 3/14/26	SHOTS ON GOAL	4, 2x, last vs. Mount St. Mary's, 3/14/26
GROUND BALLS	4, at Monmouth, 3/30/25	GROUND BALLS	2, 3x, last at Drexel, 3/11/26
CAUSED TURNOVERS	2, 2x, last vs. Rutgers, 2/13/26	CAUSED TURNOVERS	2, vs. Rutgers, 2/13/26
DRAW CONTROLS	1, 6x, last vs. Jacksonville, 3/26/26	DRAW CONTROLS	1, 6x, last vs. Jacksonville, 3/26/26

CAREER STATS								
YEAR	GP/GS	G	A	PTS	SOG	GB	CT	DC
2025	14/0	7	4	11	10	13	7	0
2026	15/8	11	2	13	24	11	8	6
<b>TOTAL</b>	<b>29/8</b>	<b>18</b>	<b>6</b>	<b>24</b>	<b>34</b>	<b>24</b>	<b>15</b>	<b>6</b>

**#24 KYLIE O'BRIEN | D | SO. | BERWYN, PA.**

CAREER-HIGHS		SEASON-HIGHS	
GOALS	N/A	GOALS	N/A
ASSISTS	N/A	ASSISTS	N/A
POINTS	N/A	POINTS	N/A
SHOTS ON GOAL	N/A	SHOTS ON GOAL	N/A
GROUND BALLS	N/A	GROUND BALLS	N/A
CAUSED TURNOVERS	N/A	CAUSED TURNOVERS	N/A
DRAW CONTROLS	N/A	DRAW CONTROLS	N/A

CAREER STATS								
YEAR	GP/GS	G	A	PTS	SOG	GB	CT	DC
2025	0/0	0	0	0	0	0	0	0
2026	0/0	0	0	0	0	0	0	0
<b>TOTAL</b>	<b>0/0</b>	<b>0</b>	<b>0</b>	<b>0</b>	<b>0</b>	<b>0</b>	<b>0</b>	<b>0</b>

**#25 AMANDA GAZELLE | M | FR. | ODENTON, MD.**

CAREER-HIGHS		SEASON-HIGHS	
GOALS	N/A	GOALS	N/A
ASSISTS	N/A	ASSISTS	N/A
POINTS	N/A	POINTS	N/A
SHOTS ON GOAL	N/A	SHOTS ON GOAL	N/A
GROUND BALLS	N/A	GROUND BALLS	N/A
CAUSED TURNOVERS	N/A	CAUSED TURNOVERS	N/A
DRAW CONTROLS	N/A	DRAW CONTROLS	N/A

CAREER STATS								
YEAR	GP/GS	G	A	PTS	SOG	GB	CT	DC
2026	0/0	0	0	0	0	0	0	0
<b>TOTAL</b>	<b>0/0</b>	<b>0</b>	<b>0</b>	<b>0</b>	<b>0</b>	<b>0</b>	<b>0</b>	<b>0</b>

**#26 ALISON SWARTOUT | M | SR. | CHARLOTTESVILLE, VA.**

CAREER-HIGHS		SEASON-HIGHS		CAREER STATS								
GOALS	1, vs. Campbell, 4/12/24	GOALS	N/A	YEAR	GP/GS	G	A	PTS	SOG	GB	CT	DC
ASSISTS	N/A	ASSISTS	N/A	2023	2/0	0	0	0	0	0	0	0
POINTS	1, vs. Campbell, 4/12/24	POINTS	N/A	2024	13/0	1	0	1	3	2	0	1
SHOTS ON GOAL	1, 3x, last vs. Campbell, 4/12/24	SHOTS ON GOAL	N/A	2025	0/0	0	0	0	0	0	0	0
GROUND BALLS	1, 2x, last vs. Monmouth, 4/27/24	GROUND BALLS	N/A	2026	0/0	0	0	0	0	0	0	0
CAUSED TURNOVERS	N/A	CAUSED TURNOVERS	N/A	<b>TOTAL</b>	<b>15/0</b>	<b>1</b>	<b>0</b>	<b>1</b>	<b>3</b>	<b>2</b>	<b>0</b>	<b>1</b>
DRAW CONTROLS	1, vs. Kent State, 2/25/24	DRAW CONTROLS	N/A									

**#27 MADDY MOBILIA | D | JR. | NEW ROCHELLE, N.Y.**

CAREER-HIGHS		SEASON-HIGHS		CAREER STATS								
GOALS	N/A	GOALS	N/A	YEAR	GP/GS	G	A	PTS	SOG	GB	CT	DC
ASSISTS	N/A	ASSISTS	N/A	2024	16/15	0	0	0	0	12	8	2
POINTS	N/A	POINTS	N/A	2025	16/16	0	0	0	0	16	16	5
SHOTS ON GOAL	N/A	SHOTS ON GOAL	N/A	2026	0/0	0	0	0	0	0	0	0
GROUND BALLS	4, 2x, last vs. Georgetown, 3/8/25	GROUND BALLS	N/A	<b>TOTAL</b>	<b>32/31</b>	<b>0</b>	<b>0</b>	<b>0</b>	<b>0</b>	<b>28</b>	<b>24</b>	<b>7</b>
CAUSED TURNOVERS	3, vs. Temple, 2/7/25	CAUSED TURNOVERS	N/A									
DRAW CONTROLS	2, vs. Georgetown, 3/8/25	DRAW CONTROLS	N/A									

**#28 MAGGIE FARRAGHER | D | SR. | EVANSTON, ILL.**

CAREER-HIGHS		SEASON-HIGHS		CAREER STATS								
GOALS	N/A	GOALS	N/A	YEAR	GP/GS	G	A	PTS	SOG	GB	CT	DC
ASSISTS	N/A	ASSISTS	N/A	2023	11/1	0	0	0	0	0	1	12
POINTS	N/A	POINTS	N/A	2024	16/15	0	0	0	0	12	13	3
SHOTS ON GOAL	N/A	SHOTS ON GOAL	N/A	2025	15/15	0	0	0	0	20	13	0
GROUND BALLS	3, 4x, last vs. UMBC, 3/4/26	GROUND BALLS	3, vs. UMBC, 3/4/26	2026	15/15	0	0	0	0	18	14	2
CAUSED TURNOVERS	4, vs. Rutgers, 2/13/26	CAUSED TURNOVERS	4, vs. Rutgers, 2/13/26	<b>TOTAL</b>	<b>57/46</b>	<b>0</b>	<b>0</b>	<b>0</b>	<b>0</b>	<b>50</b>	<b>41</b>	<b>17</b>
DRAW CONTROLS	4, vs. Lafayette, 2/15/23	DRAW CONTROLS	1, 2x, last vs. Kennesaw State, 4/9/26									

**#29 KENNEDY RADZIUL | D | SO. | NORTHPORT, N.Y.**

CAREER-HIGHS		SEASON-HIGHS		CAREER STATS								
GOALS	N/A	GOALS	N/A	YEAR	GP/GS	G	A	PTS	SOG	GB	CT	DC
ASSISTS	1, at Lindenwood, 3/21/26	ASSISTS	1, at Lindenwood, 3/21/26	2025	15/11	0	0	0	0	20	12	1
POINTS	1, at Lindenwood, 3/21/26	POINTS	1, at Lindenwood, 3/21/26	2026	15/14	0	1	1	0	33	25	0
SHOTS ON GOAL	N/A	SHOTS ON GOAL	N/A	<b>TOTAL</b>	<b>30/25</b>	<b>0</b>	<b>1</b>	<b>1</b>	<b>0</b>	<b>53</b>	<b>37</b>	<b>1</b>
GROUND BALLS	4, 5x, last at Queens, 4/16/26	GROUND BALLS	4, 4x, last at Queens, 4/16/26									
CAUSED TURNOVERS	5, at Drexel, 3/11/26	CAUSED TURNOVERS	5, at Drexel, 3/11/26									
DRAW CONTROLS	1, vs. Wagner, 3/1/25	DRAW CONTROLS	N/A									

**#30 MARINA MERSCH | GK | FR. | MEDIA, PA.**

CAREER-HIGHS		SEASON-HIGHS	
FEWEST GOALS ALLOWED <sup>^</sup>	N/A	FEWEST GOALS ALLOWED <sup>^</sup>	N/A
SAVES	N/A	SAVES	N/A
SHOTS FACED	N/A	SHOTS FACED	N/A
SAVE PERCENTAGE <sup>^</sup>	N/A	SAVE PERCENTAGE <sup>^</sup>	N/A

^ MIN. 30 MINUTES PLAYED

CAREER STATS							
YEAR	GP/GS	W-L	GA	GAA	SV	SF	SV%
2026	0/0	0-0	0	0.00	0	0	.000
<b>TOTAL</b>	<b>0/0</b>	<b>0-0</b>	<b>0</b>	<b>0.00</b>	<b>0</b>	<b>0</b>	<b>.000</b>

**#31 MADDIE GEORGE | GK | SO. | CENTREVILLE, MD.**

CAREER-HIGHS		SEASON-HIGHS	
FEWEST GOALS ALLOWED <sup>^</sup>	N/A	FEWEST GOALS ALLOWED <sup>^</sup>	N/A
SAVES	N/A	SAVES	N/A
SHOTS FACED	N/A	SHOTS FACED	N/A
SAVE PERCENTAGE <sup>^</sup>	N/A	SAVE PERCENTAGE <sup>^</sup>	N/A

^ MIN. 30 MINUTES PLAYED

CAREER STATS							
YEAR	GP/GS	W-L	GA	GAA	SV	SF	SV%
2025	0/0	0-0	0	0.00	0	0	.000
2026	0/0	0-0	0	0.00	0	0	.000
<b>TOTAL</b>	<b>0/0</b>	<b>0-0</b>	<b>0</b>	<b>0.00</b>	<b>0</b>	<b>0</b>	<b>.000</b>

**#32 ELLA RISHKO | A | SR. | REHOBOTH BEACH, DEL.**

CAREER-HIGHS		SEASON-HIGHS	
GOALS	7, 2x, last vs. Pittsburgh, 4/23/23	GOALS	6, vs. Stetson, 3/28/26
ASSISTS	4, vs. Mount St. Mary's, 3/14/26	ASSISTS	4, vs. Mount St. Mary's, 3/14/26
POINTS	8, 2x, last vs. Mount St. Mary's, 3/14/26	POINTS	8, vs. Mount St. Mary's, 3/14/26
SHOTS ON GOAL	9, vs. Louisville, 4/8/23	SHOTS ON GOAL	7, 2x, last vs. Kennesaw State, 4/9/26
GROUND BALLS	4, vs. Pittsburgh, 4/23/23	GROUND BALLS	3, 2x, last vs. Kennesaw State, 4/9/26
CAUSED TURNOVERS	6, vs. Kennesaw State, 4/9/26	CAUSED TURNOVERS	6, vs. Kennesaw State, 4/9/26
DRAW CONTROLS	15, at Towson, 4/13/25	DRAW CONTROLS	9, 4x, last vs. Stetson, 3/28/26

CAREER STATS								
YEAR	GP/GS	G	A	PTS	SOG	GB	CT	DC
2023 *	18/16	44	6	50	68	18	12	22
2024 *	14/8	17	8	25	34	14	7	16
2025	16/16	36	9	45	65	16	14	55
2026	15/15	44	11	55	67	22	31	83
<b>UD</b>	<b>31/31</b>	<b>80</b>	<b>20</b>	<b>100</b>	<b>132</b>	<b>38</b>	<b>45</b>	<b>138</b>
<b>TOTAL</b>	<b>63/55</b>	<b>141</b>	<b>34</b>	<b>175</b>	<b>234</b>	<b>70</b>	<b>64</b>	<b>176</b>

\* AT VIRGINIA TECH

**#33 SYDNEY O'DONNELL | M | SO. | DOWNINGTOWN, PA.**

CAREER-HIGHS		SEASON-HIGHS	
GOALS	2, at Lindenwood, 3/21/26	GOALS	2, at Lindenwood, 3/21/26
ASSISTS	1, at Drexel, 3/11/26	ASSISTS	1, at Drexel, 3/11/26
POINTS	2, 2x, last at Lindenwood, 3/21/26	POINTS	2, 2x, last at Lindenwood, 3/21/26
SHOTS ON GOAL	2, 2x, last at Lindenwood, 3/21/26	SHOTS ON GOAL	2, 2x, last at Lindenwood, 3/21/26
GROUND BALLS	1, 6x, last at Queens, 4/16/26	GROUND BALLS	1, 6x, last at Queens, 4/16/26
CAUSED TURNOVERS	3, vs. Rutgers, 2/13/26	CAUSED TURNOVERS	3, vs. Rutgers, 2/13/26
DRAW CONTROLS	1, vs. Saint Joseph's, 4/1/26	DRAW CONTROLS	1, vs. Saint Joseph's, 4/1/26

CAREER STATS								
YEAR	GP/GS	G	A	PTS	SOG	GB	CT	DC
2025	0/0	0	0	0	0	0	0	0
2026	15/0	5	1	6	8	6	6	1
<b>TOTAL</b>	<b>15/0</b>	<b>5</b>	<b>1</b>	<b>6</b>	<b>8</b>	<b>6</b>	<b>6</b>	<b>1</b>

**#34 RILEY STURTEVANT | M | SR. | SPRINGFIELD, VA.**

CAREER-HIGHS		SEASON-HIGHS	
GOALS	3, 2x, last at Lindenwood, 3/21/26	GOALS	3, 2x, last at Lindenwood, 3/21/26
ASSISTS	2, 3x, last vs. Coastal Carolina, 4/11/26	ASSISTS	2, 3x, last vs. Coastal Carolina, 4/11/26
POINTS	5, at Lindenwood, 3/21/26	POINTS	5, at Lindenwood, 3/21/26
SHOTS ON GOAL	4, 2x, last vs. Stetson, 3/28/26	SHOTS ON GOAL	4, 2x, last vs. Stetson, 3/28/26
GROUND BALLS	3, 3x, last vs. Coastal Carolina, 4/11/26	GROUND BALLS	3, 2x, last vs. Coastal Carolina, 4/11/26
CAUSED TURNOVERS	4, vs. Coastal Carolina, 4/11/26	CAUSED TURNOVERS	4, vs. Coastal Carolina, 4/11/26
DRAW CONTROLS	N/A	DRAW CONTROLS	N/A

CAREER STATS								
YEAR	GP/GS	G	A	PTS	SOG	GB	CT	DC
2023	0/0	0	0	0	0	0	0	0
2024	8/0	2	0	2	4	2	0	0
2025	16/9	13	2	15	19	11	6	0
2026	15/8	19	7	26	28	16	14	0
<b>TOTAL</b>	<b>39/17</b>	<b>34</b>	<b>9</b>	<b>43</b>	<b>51</b>	<b>29</b>	<b>20</b>	<b>0</b>

**#35 NICHELLE DESBORDES | D | SO. | ELLICOTT CITY, MD.**

CAREER-HIGHS		SEASON-HIGHS	
GOALS	N/A	GOALS	N/A
ASSISTS	N/A	ASSISTS	N/A
POINTS	N/A	POINTS	N/A
SHOTS ON GOAL	N/A	SHOTS ON GOAL	N/A
GROUND BALLS	N/A	GROUND BALLS	N/A
CAUSED TURNOVERS	N/A	CAUSED TURNOVERS	N/A
DRAW CONTROLS	N/A	DRAW CONTROLS	N/A

CAREER STATS								
YEAR	GP/GS	G	A	PTS	SOG	GB	CT	DC
2025	0/0	0	0	0	0	0	0	0
2026	0/0	0	0	0	0	0	0	0
<b>TOTAL</b>	<b>0/0</b>	<b>0</b>	<b>0</b>	<b>0</b>	<b>0</b>	<b>0</b>	<b>0</b>	<b>0</b>

**#37 MIA DIDIO | D | SR. | WESTPORT, CONN.**

CAREER-HIGHS		SEASON-HIGHS	
GOALS	N/A	GOALS	N/A
ASSISTS	N/A	ASSISTS	N/A
POINTS	N/A	POINTS	N/A
SHOTS ON GOAL	N/A	SHOTS ON GOAL	N/A
GROUND BALLS	N/A	GROUND BALLS	N/A
CAUSED TURNOVERS	N/A	CAUSED TURNOVERS	N/A
DRAW CONTROLS	N/A	DRAW CONTROLS	N/A

CAREER STATS								
YEAR	GP/GS	G	A	PTS	SOG	GB	CT	DC
2023	1/0	0	0	0	0	0	0	0
2024	0/0	0	0	0	0	0	0	0
2025	0/0	0	0	0	0	0	0	0
2026	3/1	0	0	0	0	0	0	0
<b>TOTAL</b>	<b>4/1</b>	<b>0</b>	<b>0</b>	<b>0</b>	<b>0</b>	<b>0</b>	<b>0</b>	<b>0</b>

**#38 SADIE SCHULTZ | M | FR. | RIVERHEAD, N.Y.**

CAREER-HIGHS		SEASON-HIGHS	
GOALS	N/A	GOALS	N/A
ASSISTS	N/A	ASSISTS	N/A
POINTS	N/A	POINTS	N/A
SHOTS ON GOAL	N/A	SHOTS ON GOAL	N/A
GROUND BALLS	N/A	GROUND BALLS	N/A
CAUSED TURNOVERS	N/A	CAUSED TURNOVERS	N/A
DRAW CONTROLS	N/A	DRAW CONTROLS	N/A

CAREER STATS								
YEAR	GP/GS	G	A	PTS	SOG	GB	CT	DC
2026	0/0	0	0	0	0	0	0	0
<b>TOTAL</b>	<b>0/0</b>	<b>0</b>	<b>0</b>	<b>0</b>	<b>0</b>	<b>0</b>	<b>0</b>	<b>0</b>

**#40 STEPH MARSZAL | GK | SR. | CATONSVILLE, MD.**

CAREER-HIGHS
FEWEST GOALS ALLOWED^
1, vs. Lafayette, 3/6/24
SAVES
14, at Lehigh, 2/9/24
SHOTS FACED
35 vs. Princeton, 2/26/25
SAVE PERCENTAGE^
.667, 5x, last vs. Kennesaw State, 4/9/26

SEASON-HIGHS
FEWEST GOALS ALLOWED^
3, 2x, last vs. Kennesaw State, 4/9/26
SAVES
10, 3x, last at Georgetown, 3/7/26
SHOTS FACED
30, vs. Navy, 2/18/26
SAVE PERCENTAGE^
.667, vs. Kennesaw State, 4/9/26

^ MIN. 30 MINUTES PLAYED

CAREER STATS							
YEAR	GP/GS	W-L	GA	GAA	SV	SF	SV%
2023	0/0	0-0	0	0.00	0	0	.000
2024	13/12	7-5	97	10.12	93	253	.489
2025	14/13	8-5	154	11.65	106	363	.408
2026	15/15	11-4	128	8.53	88	288	.405
<b>TOTAL</b>	<b>42/40</b>	<b>26-14</b>	<b>379</b>	<b>10.02</b>	<b>286</b>	<b>904</b>	<b>.430</b>

**#41 MOLLY BAUMGRATZ | M | JR. | CHARLOTTE, N.C.**

CAREER-HIGHS
GOALS
N/A
ASSISTS
N/A
POINTS
N/A
SHOTS ON GOAL
N/A
GROUND BALLS
N/A
CAUSED TURNOVERS
1, 3x, last vs. Jacksonville, 3/26/26
DRAW CONTROLS
13, at Queens, 4/16/26

SEASON-HIGHS
GOALS
N/A
ASSISTS
N/A
POINTS
N/A
SHOTS ON GOAL
N/A
GROUND BALLS
N/A
CAUSED TURNOVERS
1, 3x, last vs. Jacksonville, 3/26/26
DRAW CONTROLS
13, at Queens, 4/16/26

CAREER STATS								
YEAR	GP/GS	G	A	PTS	SOG	GB	CT	DC
2024	0/0	0	0	0	0	0	0	0
2025	12/5	0	0	0	0	0	0	14
2026	15/14	0	0	0	0	0	3	70
<b>TOTAL</b>	<b>27/19</b>	<b>0</b>	<b>0</b>	<b>0</b>	<b>0</b>	<b>0</b>	<b>3</b>	<b>84</b>

**#42 ELLIE DASSOULAS | A | SR. | TOWSON, MD.**

CAREER-HIGHS
GOALS
N/A
ASSISTS
N/A
POINTS
N/A
SHOTS ON GOAL
N/A
GROUND BALLS
N/A
CAUSED TURNOVERS
N/A
DRAW CONTROLS
N/A

SEASON-HIGHS
GOALS
N/A
ASSISTS
N/A
POINTS
N/A
SHOTS ON GOAL
N/A
GROUND BALLS
N/A
CAUSED TURNOVERS
N/A
DRAW CONTROLS
N/A

CAREER STATS								
YEAR	GP/GS	G	A	PTS	SOG	GB	CT	DC
2023	0/0	0	0	0	0	0	0	0
2024	0/0	0	0	0	0	0	0	0
2025	0/0	0	0	0	0	0	0	0
2026	2/1	0	0	0	0	0	0	0
<b>TOTAL</b>	<b>2/1</b>	<b>0</b>	<b>0</b>	<b>0</b>	<b>0</b>	<b>0</b>	<b>0</b>	<b>0</b>

# DELAWARE TV/RADIO CHART



1

Stella Stolarick  
Sophomore | A  
Haddonfield, N.J.  
Haddonfield Memorial  
@stellastolarick



2

Grayson Buono  
Sophomore | A  
Wayne, Pa.  
Radnor  
@grayson.buono



3

Lara Hoeflich  
Sophomore | D  
Glenelg, Md.  
Glenelg High School  
@lara.hoeflich8



4

Marin Mooney  
Freshman | A  
Villanova, Pa.  
Radnor  
@\_marinmooney



6

Jenny Green  
Freshman | D  
Garnet Valley, Pa.  
Garnet Valley  
@jenny\_green



7

Julia Ciuffo  
Junior | M  
Reisterstown, Md.  
Roland Park Country  
@juliaciuffo



8

Jaclyn Marszal  
Senior | A  
Catonsville, Md.  
Glenelg Country School (Notre Dame)  
@jaclynmarszal



9

Kat Baseggio  
Junior | D  
Guilford, Conn.  
Guilford  
@katbaseggio



10

McKenzie Didio  
Senior | A  
Westport, Conn.  
Staples  
@mckenzieididio



11

Julia Reagan  
Senior | M  
East Atlantic Beach, N.Y.  
Sacred Heart Academy  
@juliareagann



12

Erin Hussy  
Freshman | M  
Severna Park, Md.  
Severna Park  
@erin\_huss7



13

Maggie Craytor  
Sophomore | A  
Charlottesville, Va.  
Western Albemarle  
@maggiecraytor



14

Sophia Muscolino  
Junior | A  
Baldwinsville, N.Y.  
Charles W. Baker  
@sophia.muscolino



15

Meg MacMurray  
Sophomore | A  
Chester Springs, Pa.  
The Hill School (Maryland)  
@megmacmurray



16

Callie Drab  
Senior | A  
Suffern, N.Y.  
Suffern  
@calliedrab



17

Morgan Gore  
Senior | M  
Crofton, Md.  
Arundel  
@morgangore



18

Lena Stolarick  
Sophomore | D  
Haddonfield, N.J.  
Haddonfield Memorial  
@lena\_stolarick



19

Maggie Porter  
Freshman | A  
Stevenson, Md.  
St. Paul's School for Girls (Penn State)  
@maggieporterr



20

Sam Paradise  
Junior | M  
Perry Hall, Md.  
Maryvale Preparatory  
@sparadise10



21

Kate Mercer  
Senior | D  
Katonah, N.Y.  
John Jay  
@kat Mercer



22

Mary Matey  
Junior | D  
Phoenixville, Pa.  
Archbishop John Carroll  
@marymatey



23

Lulu Rishko  
Sophomore | M  
Rehoboth Beach, Del.  
Cape Henlopen  
@lulurishko



24

Kylie O'Brien  
Sophomore | D  
Berwyn, Pa.  
Academy of Notre Dame  
@kylieobrien\_



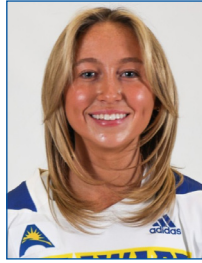
25

Amanda Gazelle  
Freshman | M  
Odenton, Md.  
Archbishop Spalding  
@amandagazelle15

# DELAWARE TV/RADIO CHART



**26**  
Alison Swartout  
Senior | M  
Charlottesville, Va.  
Monticello  
@alison.swartout



**27**  
Maddy Mobilia  
Junior | D  
New Rochelle, N.Y.  
The Ursuline School  
@madelinemobilia



**28**  
Maggie Farragher  
Senior | D  
Evanston, Ill.  
Evanston Township  
@maggiefarragher



**29**  
Kennedy Radziul  
Sophomore | D  
Northport, N.Y.  
Northport  
@kennedyradziul



**30**  
Marina Mersch  
Freshman | GK  
Media, Pa.  
Cardinal O'Hara  
@marina.mersch18



**31**  
Maddie George  
Sophomore | GK  
Centreville, Md.  
Queen Anne's County  
@maddie.a.george



**32**  
Ella Rishko  
Senior | A  
Rehoboth Beach, Del.  
Cape Henlopen (Virginia Tech)  
@ella.rishko



**33**  
Sydney O'Donnell  
Sophomore | M  
Downingtown, Pa.  
Downingtown West  
@sydneyodonnell33



**34**  
Riley Sturtevant  
Senior | M  
Springfield, Va.  
West Springfield  
@riley\_sturtevant



**35**  
Nichelle Desbordes  
Sophomore | D  
Ellicott City, Md.  
Glenelg Country School  
@nichelle.des11



**37**  
Mia Didio  
Senior | D  
Westport, Conn.  
Staples  
@mia.didio11



**38**  
Sadie Schultz  
Freshman | M  
Riverhead, N.Y.  
Riverhead  
@sadieschultz\_



**40**  
Steph Marszal  
Senior | GK  
Catonsville, Md.  
Glenelg Country School  
@stephmarszal



**41**  
Molly Baumgratz  
Junior | M  
Charlotte, N.C.  
Charlotte Catholic  
@mollybaumgratz



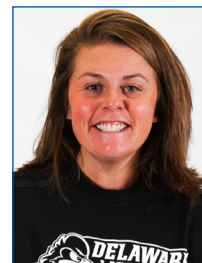
**42**  
Ellie Dassoulas  
Senior | A  
Towson, Md.  
Roland Park Country  
@elliedassoulas



**Head Coach**  
Amy Altig  
7th season



**Assoc. Head Coach**  
Kara Nakrasius  
4th season



**Assoc. Head Coach**  
Sam Pratt  
2nd season



**Assistant Coach**  
Lilly Siskind  
2nd season