



# DELAWARE FIGHTIN' BLUE HENS

## WOMEN'S LACROSSE GAME NOTES

a new era. ≡



Brendan Thomas, Director, Communications & Creative Services | 207-400-2840 | brendant@udel.edu

### SERIES HISTORY

All Time.....	2-4
Altig vs.....	0-2
Streak.....	L3
At Home.....	1-2
On the Road.....	1-2
Neutral.....	n/a
Largest Win.....	13-3, H, 3/23/11
Largest Loss.....	19-6, A, 3/17/21
Last Win.....	13-3, H, 3/23/11
Last Loss.....	19-8, H, 3/19/22

### HOW TO FOLLOW

Stream.....ESPN+  
Play-by-Play.....Matt Popelka

X/Instagram.....@DelawareWLAX  
Live Stats.....bluehens.com  
Tickets.....bluehens.com/WLAXtickets

### WHO ARE WE

Only refer to our institution as the **University of Delaware** or **UD**. Do not use "U of D," "UofD," "the U of D" or "UDel." Do not use periods in "UD." We are based in Newark (new-ARK), Delaware.

We are the Fightin' Blue Hens on first reference and Blue Hens, Hens, or Blue & Gold after that.

### MEDIA RELATIONS

For interview requests for women's lacrosse student-athletes or coaches, please contact Brendan Thomas, Director, Communications & Creative Services.

Email.....brendant@udel.edu  
Cell.....207-400-2840

## DELAWARE (7-4)



**Head Coach:** Amy Altig  
**Record at UD:** 43-44 (7th season)  
**Career Record:** same  
**Last:** W, 16-6 vs. Stetson

GM  
12

## SAINT JOSEPH'S (5-6)



**Head Coach:** Alex Kahoe  
**Record at SJU:** 113-90 (12th season)  
**Career Record:** same  
**Won:** W, 22-9 vs. La Salle

wednesday, april 1 | 1 p.m. et | newark, del. | delaware stadium (18,077) | espn+

### OPENING DRAW

The University of Delaware women's lacrosse program plays its final non-conference game as it hosts Saint Joseph's on Wednesday afternoon.

The Fightin' Blue Hens are 2-6 all-time against the Hawks, with wins during the 2010 and 2011 seasons. St. Joe's has won three-straight games in the series, most recently in 2022.

Delaware enters Wednesday's matchup riding six-game winning streak, the program's longest streak since 2016. The last time UD had a seven-game winning streak was to open the 2000 season. The Blue Hens scored at least 13 goals in all six of those games, the longest streak by a UD team since doing so in seven-straight games to open the 2000 season.

**Ella Risko** earned Delaware's first-ever ASUN weekly award on Monday, being named defensive player of the week. Risko led the Hens with 18 draw controls and eight caused turnovers in two games, while also adding three ground balls. The senior also led the Blue Hens on the offensive side with eight points. She had nine draw controls in both contests, the third and fourth time this season she has recorded nine in a single game. Risko also tied her career high with four caused turnovers in each game.

**McKenzie Didio** had career highs of four goals and five points in the win over Jacksonville last Thursday. It was her first-career hat trick. **Ella Risko** led UD with six goals on Saturday, becoming the first Blue Hen since Lizzie Yurchak in 2023 to score six goals in a game.

**Ella Risko** leads the ASUN in both goals (32) and goals per game (2.91) and is fourth in points (41). Even as an attacker, Risko ranks fourth in the ASUN in draw controls (61) and draw controls per game (5.55) and is tied for fifth in caused turnovers (19).

### HEN LEADERS



ella risko

**goals**  
32 goals



sophia muscolino

**assists**  
22 assists



ella risko

**points**  
41 points



ella risko

**draws**  
61 draw controls



kennedy radziul

**ground balls**  
24 ground balls



steph marszal

**saves**  
70 saves

### 2026 SCHEDULE

KEY H A N



feb. 6  
Philadelphia, Pa.  
L, 12-10



feb. 13  
Newark, Del.  
L, 12-4



feb. 18  
Newark, Del.  
L, 15-10



march 4  
Newark, Del.  
W, 16-8



march 7  
Washington, D.C.  
L, 9-8



march 11  
Philadelphia, Pa.  
W, 13-6



march 14  
Newark, Del.  
W, 17-5



march 19  
Clarksville, Tenn.  
W, 19-3



march 21  
St. Charles, Mo.  
W, 25-7



march 26  
Newark, Del.  
W, 14-13



march 28  
Newark, Del.  
W, 16-6



april 1  
Newark, Del.  
4 p.m.  
ESPN+



april 9  
Newark, Del.  
Noon  
ESPN+



april 11  
Newark, Del.  
Noon  
ESPN+



april 16  
Charlotte, N.C.  
Noon  
ESPN+



april 22  
Lynchburg, Va.  
2 p.m.  
ESPN+

\*all times ET

# A NEW ERA

After a nearly 18-month wait, the new era is finally here and the University of Delaware Fightin' Blue Hens are officially full members of Conference USA as of July 1, 2025. Fourteen of UD's 22 varsity programs will be housed in CUSA, with eight others joining as affiliate members in the Atlantic Sun (women's lacrosse, men's and women's swimming & diving), Atlantic 10 (men's lacrosse), Mid-American Conference (rowing), The Summit League (men's soccer), Atlantic Hockey America (ice hockey), and Mountain Pacific Sports Federation (field hockey).

An athletic department built on history and tradition, Delaware brings an abundance of success to CUSA having won 10 national championships, 172 team conference titles, 282 individual conference crowns, 342 major conference awards, 2,655 all-league selections, and 543 all-americans.

UD student-athletes complement their athletic success with strong academic performances. During the 2024-25 academic year, the Blue Hens compiled a cumulative 3.41 grade-point average—the highest in department history, excluding academic terms impacted by COVID-19. This marked the 11th-consecutive year and the 23rd-straight semester in which UD student-athletes have posted a 3.00 GPA or better.

The move will push the Delaware brand across the nation, spanning from the northeast down into Florida, and west as far as New Mexico. However, the reach won't stop there. At least five football games will hit the national scene on CBS Sports Network/ESPN family of networks, including a non-conference tilt on FOX against Colorado. Men's and women's basketball will also have the chance to play nationally televised games as part of CUSA's media rights agreement with CBS Sports Network and ESPN.

Speaking of reach, Delaware's initial announcements about joining Conference USA reached over two billion people according to social media analytics. Put that into perspective – just over one million people live in the state of Delaware. That means these announcements reached over 2,000 Delawares.



CUSA SPONSORED DELAWARE SPORTS		OTHER DELAWARE SPORTS AFFILIATIONS		
- Baseball	- W Soccer	- Field Hockey	MPSF	- W Rowing
- M/W Basketball	- Softball	- Ice Hockey	Atlantic Hockey America	- M Soccer
- W Cross Country/Track & Field	- M/W Tennis	- M Lacrosse	Atlantic 10	- M/W Swim/Dive
- Football	- Volleyball	- W Lacrosse	Atlantic Sun	
- M/W Golf				Mid-American The Summit League Atlantic Sun

**QUICK FACTS**

School.....	University of Delaware
Location.....	Newark, Del.
Founded .....	1743
Enrollment .....	24,039
President .....	Laura Carlson
School Website.....	www.udel.edu
Nickname .....	Fightin' Blue Hens
School Colors .....	Blue & Gold
Athletics Website .....	www.bluehens.com
Director of Athletics.....	Jordan Skolnick
Conference.....	Atlantic Sun
Website .....	www.asunsports.org

**WOMEN'S LACROSSE PROGRAM**

Facility.....	Delaware Stadium
Capacity .....	18,077
First Season of Women's Lacrosse .....	1978
All-Time Record .....	435-357-1
All-Time Delaware Stadium Record.....	68-55
National Championships .....	3
Conference Championships.....	6
Head Coach .....	Amy Altig (James Madison '05)
Career Record.....	43-44 / 7th season
Record at UD.....	same
Letterwinners Returning/Lost.....	31/10
Starters Returning/Lost .....	10/2
Newcomers .....	8
2025 Overall Record.....	10-6
2025 CAA Record .....	6-2
2025 CAA Finish.....	3rd
2025 Postseason.....	CAA Semifinals

**TABLE OF CONTENTS**

A New Era.....	2
Storylines.....	3-6
Program information .....	3
Statistical comparison.....	3
What to look for.....	3
Delaware record when.....	4
Statistical superlatives.....	5
ASUN standings/awards.....	5
Altig record vs. opponents.....	6
Milestone watch .....	6
Roster.....	7
Head coach Amy Altig.....	8
Assistant coaches & support staff .....	9
Atlantic Sun Conference.....	10
University of Delaware .....	11
Starters & stat leaders .....	12
Highs & lows.....	13-14
Season stats.....	15
NCAA Rankings.....	16-17
Player Pages .....	18-27
TV Roster.....	28-29

**WHAT TO LOOK FOR...**

- Delaware is 6-0 this season, and 25-11 in seven seasons under head coach **Amy Altig** when holding opponents under 85% in clearing attempts.

- The Fightin' Blue Hens have allowed less than 10 goals in seven of their last eight games, going 6-1 in those games. Since Altig's first season in 2020, UD is 28-3 when holding opponents under 10 goals.

**chasing 40**

**Ella Rishko** currently leads the Blue Hens and the ASUN with 32 goals on the season. She is looking to become the first Blue Hen since **Christine Long** in 2019 to reach the 40-goal mark in a season.

**balanced scoring effort**

Delaware has had 14 players score a goal in 2026, with six scoring at least 10 goals. Four times, the Blue Hens have had at least 10 different players in the scoring column, with a season-high 12 players scoring a goal at Lindenwood. That is the most since 12 Blue Hens scored in an 18-4 win over Kent State on February 25, 2024.

**sensational steph**

**Steph Marszal** has been dominant in the cage this season, leading the ASUN in minutes played (660) and goals against average (8.73). She is tied for fifth in total saves (70) and ranks sixth second in saves per game (6.36) and save percentage (.422). Marszal had a .500 save percentage in five-straight games (UMBC - Austin Peay), the longest streak by a Blue Hen since Tori Zorovich in 2013 (min. 30 minutes played/game).

**kennedy going beast mode**

**Kennedy Radziul** has been a beast in the defensive zone this season, leading the Blue Hens with 24 ground balls and tying for the team lead with 17 caused turnovers. She had a career-high five caused turnovers at Georgetown and has had four ground balls in a game three times this spring.

**rishko on fire**

**Ella Rishko** recorded a hat trick in six-straight games from February 13 (Navy) through March 19 (Austin Peay). It was the longest streak since **Caitlin McCartney** also did it in six-consecutive games over the 2012-13 seasons. Rishko also had least four points in five-straight games, the longest streak since **Delaney McDaniel** had four or more points in five-straight games between the 2024-25 seasons.

**tough sos**

Delaware has had the 38th-toughest schedule in the country based on opponents winning percentage. UD's first 11 opponents hold an overall record of 64-48 (.571), including a pair of ranked matchups with Navy and Georgetown. It is the toughest schedule in the ASUN, with Stetson (46th, .550) the next highest.

**stiff defense**

The Fightin' Blue Hens allowed less than 10 goals in six-straight games from March 4-21, the program's longest streak since 2016.

**welcome back phia**

**Sophia Muscolino** missed the first three games of the season due to injury, but returned to the lineup against UMBC on March 4, making her first-career start. The junior has averaged 4.25 points per game in the eight games since her return, including a career-high seven points twice (Mount St. Mary's, Lindenwood). She had a career-high five assists against the Mount and her first-career hat trick at Lindenwood.

**filling the tub**

Through its first six home games at Delaware Stadium, the Blue Hens lead the ASUN and rank 23rd nationally with an average home attendance of 392 fans. The Blue & Gold is the only ASUN program averaging more than 300 fans per game.

**kat scoops**

In Delaware's home-opener against Rutgers, **Kat Baseggio** had a career-high five ground balls to reach the 50-career ground ball milestone in her 34th-career game. The five ground balls are the most in a game by a Delaware player since March 6, 2024. Baseggio also finished with four caused turnovers, tying a career high.

**centurion status achieved**

Senior **Jaclyn Marszal** hit personal milestones in each of Delaware's first two games this season. She had two assists in the season opener at Temple to reach 100 career points, then added another assist against Rutgers to achieve 100 points in the Blue & Gold. Marszal had two goals as a freshman at Notre Dame.

**ella day in philadelphia**

Senior **Ella Rishko** reached a trio of milestones at Temple in the season opener. She had a hat trick to reach 100-career goals scored and recorded nine draw controls to surpass 100 for her career. She also reached 50-career ground balls with three on the day.

**STATISTICAL COMPARISON**

Category	DEL	NCAA	ASUN	SJU	NCAA	A10
Assists Per Game	7.82	14th	1st	5.82	48th	3rd
Caused TO Per Game	10.36	23rd	2nd	7.73	78th	5th
Clearing Percentage	.889	47th	3rd	.911	25th	2nd
Draw Control Percentage	.574	27th	4th	.555	40th	3rd
Draw Controls Per Game	13.73	34th	3rd	13.82	31st	2nd
Free Position Percentage	.442	74th	6th	.515	21st	4th
Ground Balls Per Game	16.18	39th	3rd	14.91	72nd	4th
Save Percentage	.422	59th	3rd	.360	115th	10th
Scoring Defense	8.73	22nd	2nd	10.82	68th	7th
Scoring Margin	5.09	18th	1st	1.82	45th	5th
Scoring Offense	13.82	22nd	2nd	12.64	39th	4th
Shot Percentage	.443	41st	3rd	.406	72nd	7th
Shots Per Game	31.18	14th	1st	31.09	15th	1st
Shots On Goal Per Game	21.55	27th	3rd	22.82	16th	1st
Turnovers Per Game	13.55	45th	3rd	11.00	8th	1st

**200 club**

In Delaware's season opener against Temple, **Steph Marszal** became the 17th Blue Hen to reach the 200-career save mark. She is the first UD goalie to reach the mark since **Mercy McCarthy** (2019-23).

**it starts at the draw**

The Blue Hens went 7-0 in 2025, and are 32-10 in seven seasons under **Amy Altig** when winning more draws than their opponents. **Ella Rishko** set the program single-game record with 15 draw controls at Towson (April 13).

**keep the winning coming**

Delaware is looking to build off of back-to-back 10-win seasons. It is the first time the program has had consecutive winning seasons since 2016-17 and the first time it has won at least 10 games in consecutive years since 2015-16.

**runnin' it back**

The Blue Hens return 10-of-12 starters from the 2025 season after the graduation of All-CAA Second Team selections Delaney McDaniel and Erin Gormley. Overall, UD returns 31 players who were on last season's roster, including 21 who saw action in at least one game and 13 who appeared in at least 12 games.

**newcomers**

The Blue Hens welcome eight newcomers to the roster in 2026. The group includes seven freshmen - **Amanda Gazelle, Jenny Green, Erin Hussey, Marin Mooney, Marina Mersch, Maggie Porter** and **Sadie Schultz** - who will all look to make their collegiate debuts in 2026. Porter transferred to Delaware after spending the fall at Penn State. Additionally, sophomore transfer **Meg MacMurray** joined the Hens after a year at Maryland.

**roster breakdown**

The 2026 Delaware roster features 39 players hailing from nine different states. Sisters **Ella** and **Lulu Rishko** are the only two Delawareans on the roster, while senior captain **Maggie Farragher** (Illinois) is the farthest from home. Maryland (12), Pennsylvania (8) and New York (7) are the three most represented states.

**oh captain, my captains**

Delaware will be led by a trio of senior captains in 2026 as **Maggie Farragher, Morgan Gore**, and **Ella Rishko** were all selected to lead the squad. Farragher and Gore are both second-time selections after serving as captains in 2025, while Rishko is a first-time captain in her second season as a Blue Hen following her transfer from Virginia Tech.

**asun a good fit**

The Blue Hens should fit right in during their first season in the ASUN in 2026. Delaware finished 34th in the final 2025 RPI rankings, which would have been at the top of the conference, with Liberty second at 39th. Statistically, Delaware would have ranked first in the conference in free position percentage (.545), second in scoring defense (11.63), and third in caused turnovers per game (11.19), assists per game (.625) and turnovers per game (14.63).

**returning offensive firepower**

Delaware returns three of its top-five scorers. **Jaclyn Marszal** ranked second on the team with 50 points (21g, 29a), while **Ella Rishko** had a team-leading 36 goals and 45 points, and **Morgan Gore** (30g, 2a) rounded out the top five. Overall, the Blue Hens bring back 67% of its goal-scoring production from last season

**defensive dawgs**

The Blue & Gold ranked eighth in the country in 2025 with 11.19 caused turnovers per game. The Hens bring back starters **Kat Baggio** (23 CT, 29 GB), **Maggie Farragher** (13 CT, 20 GB), and **Kennedy Radziul** (12 CT, 20 GB). Overall, UD returns 69% of its caused turnover production from 2025.

**get the lead, hold the lead**

The Blue Hens have been very good in recent years in holding a second-half lead. In 2025, the squad went 10-1 when leading at halftime and 9-0 when having the advantage after three quarters. Similarly, Delaware was 8-0 in 2024 when up at the midway point and 10-0 when leading after three quarters.

**magic number is 10**

Since **Amy Altig** became head coach prior to the 2020 season, the Blue Hens are 27-3 when holding opponents under 10 goals. On the flipside, Delaware is 39-18 when the offense scores 10 or more goals.

**caa postseason honors**

Delaware returns three of its five All-CAA selections from a season ago. Senior **Morgan Gore** was an All-CAA Second Team pick in 2025, earning her second-career postseason nod, and sophomores **Lulu Rishko** and **Kennedy Radziul** were both selected to the CAA All-Rookie Team.

**puerto rico**

Senior twins **McKenzie** and **Mia Didio** both represented Puerto Rico at the 2024 World Lacrosse Women's U20 Championship in Hong Kong, China. Their maternal grandmother is a native of Puerto Rico and the two earned spots on the Puerto Rico U20 National Team.

Puerto Rico finished fifth overall with a 6-2 record, going 3-1 in pool play and winning two consolation playoff games. McKenzie finished sixth on the team in scoring with eight goals and two assists. Mia, unfortunately, missed the tournament due to injury.

**altig here for the long haul**

In July, Delaware and head coach **Amy Altig** agreed upon a contract extension that will keep her at the helm of the women's lacrosse program through the 2030 season. Altig was named the seventh head coach in program history in June 2019 and has led Delaware to a 36-40 record through her first six seasons, including back-to-back 10-win campaigns in 2023-24. UD won six CAA games in 2025, the program's most league wins since 1999 when the Blue Hens went 6-0 in America East play.

**DELAWARE RECORD WHEN...**

	2026	ALTIG
Overall	7-4	43-44
Conference	4-0	20-14
Non-conference	3-4	23-30
Home	4-2	24-20
Away	3-2	19-20
Neutral	0-0	0-4
Current streak	W6	W6
Current home streak	W4	W4
Current road streak	W3	W3
Current neutral streak	--	L5
vs. ranked opponent	0-2	1-14
Day game	7-3	41-41
Night game (5 p.m. or later)	0-1	2-3
February	0-3	11-14
March	7-1	21-19
April	0-0	11-8
May	0-0	0-3
Scoring first	6-3	27-20
Opponent scores first	1-1	16-24
Scoring 0-4 goals	0-1	0-7
Scoring 5-9 goals	0-1	2-19
Scoring 10-14 goals	2-2	21-17
Scoring 15-19 goals	4-0	18-1
Scoring 20+ goals	1-0	2-0
Allowing 0-4 goals	1-0	5-0
Allowing 5-9 goals	5-1	23-3
Allowing 10-14 goals	1-2	13-21
Allowing 15-19 goals	0-1	1-17
Allowing 20+ goals	0-0	0-3
Leading after 1st	6-2	25-8
Trailing after 1st	1-2	9-23
Tied after 1st	0-0	7-5
Leading at halftime	6-2	32-6
Trailing at halftime	0-2	7-34
Tied at halftime	1-0	4-4
Leading after 3rd	6-1	33-6
Trailing after 3rd	1-2	4-28
Tied after 3rd	0-1	4-2
Overtime	0-0	1-3
Delaware has more GBs	7-2	31-14
Opponent has more GBs	0-2	10-28
GBs are even	0-0	2-2
Delaware wins more draws	6-2	32-10
Opponent wins more draws	1-2	11-31
Draws are even	0-0	0-3
Delaware clear attempts ≥ 85%	7-1	32-22
Delaware clear attempts < 85%	0-3	11-22
Opponent clear attempts ≥ 85%	1-4	18-33
Opponent clear attempts < 85%	6-0	25-11

**ON THIS DATE IN DELAWARE WLAX HISTORY...**

**APR**

The Fightin' Blue Hens are 2-6 all-time in games played on April 1. Delaware defeated Towson in 2007, 16-15, and Drexel in 1999, 19-2.

**1**

The last time UD played on April 1 was during the 2023 season, a 13-12 overtime loss at William & Mary despite three assists and five points from **Riley Gillin**.

**ACTIVE POINTS LEADERS**

Name	Yr.	G	A	P
Ella Rishko	Sr.	129	32	161
Jaclyn Marszal	Sr.	60	70	130
Morgan Gore	Sr.	80	11	91
Callie Drab	Sr.	34	26	60
Sophia Muscolino	So.	16	23	39
Riley Sturtevant	Sr.	30	7	37
McKenzie Didio	Sr.	30	2	32
Sam Paradise	Jr.	20	2	22
Lulu Rishko	So.	16	6	22
Maggie Craytor	So.	11	3	14
Grayson Buono	So.	8	5	13
Maggie Porter	Fr.	9	3	12
Julia Ciufu	Jr.	4	3	7
Sydney O'Donnell	So.	5	1	6
Meg MacMurray	So.	1	1	2
Alison Swartout	Sr.	1	0	1
Kennedy Radziul	So.	0	1	1
Kat Basesggio	Jr.	0	0	0
Molly Baumgratz	Jr.	0	0	0
Ellie Dassoulas	Sr.	0	0	0
Nichelle Desbordes	So.	0	0	0
Mia Didio	Sr.	0	0	0
Maggie Farragher	Sr.	0	0	0
Amanda Gazelle	Fr.	0	0	0
Jenny Green	Fr.	0	0	0
Lara Hoeflich	So.	0	0	0
Erin Hussey	Fr.	0	0	0
Mary Matey	Jr.	0	0	0
Kate Mercer	Sr.	0	0	0
Maddy Mobilia	Jr.	0	0	0
Marin Mooney	Fr.	0	0	0
Kylie O'Brien	So.	0	0	0
Julia Reagan	Sr.	0	0	0
Sadie Schultz	Fr.	0	0	0
Lena Stolarick	So.	0	0	0
Stella Stolarick	So.	0	0	0

**GOAL/POINT STREAKS**

Name	Consecutive Games	
	w/Point	w/Goal
Riley Sturtevant	19	8
Jaclyn Marszal	19	1
Ella Rishko	9	9
Sophia Muscolino	8	8
Maggie Porter	7	5
Morgan Gore	6	6
Callie Drab	4	3
Lulu Rishko	3	0
Grayson Buono	1	1
Julia Ciufu	1	1

**saac queen**

Senior **McKenzie Didio** is currently in her second year serving as president of Delaware's Student-Athlete Advisory Committee (SAAC). During the 2025-26 academic year, Didio is also serving as a vice chair representative for Conference USA's SAAC, alongside softball graduate student **Claire Woods**.

**there's something in the gene pool**

The Blue Hens had two pairs of sisters on the team who are both two-thirds of a set of triplets. Seniors **Jaclyn** and **Steph Marszal** have a third sister, Jamie, who is a senior at Loyola Maryland. Sophomores **Lena** and **Stella Stolarick** also have a third sister who is on the Holy Cross track & field team.

The genetic trait of twins runs strong on the Blue Hens' roster. Seniors **McKenzie** and **Mia Didio** have spent their entire careers at UD, while junior **Molly Baumgratz** has a twin sister - Ellie - who attends the University of Tennessee. Freshman **Marina Mersch** has a twin sister - Chiara - who is also a freshman at Delaware.

**Ella** and **Lulu Rishko** make up a fourth set of sisters on the 2026 roster. Additionally, junior **Mary Matey's** older sister, **Kellie Ann**, layed defense for the Blue Hens from 2021-24. They were both on the roster during the 2024 season.

**nakrasius promoted**

Back in June, head coach **Amy Altig** announced the promotion of **Kara Nakrasius** to associate head coach. Nakrasius joined the UD program in August 2022 and has spent the past three seasons overseeing UD's efforts on defense and at the draw. In 2025, the Blue Hens ranked eighth nationally in caused turnovers per game (11.19) after ranking ninth in 2024 (10.44). Delaware has set eight program records on defense and at the draw in three seasons under Nakrasius.

**Records under Nakrasius**

- Team single-game CT (26)
- Team single-game GB (33)
- Team single-game DC (26)
- Team single-season DC (240)
- Individual single-game CT (Hranicka, 11)
- Individual single-season CT (Hranicka, 50)
- Individual single-game DC (Rishko, 15)
- Individual career DC (Livornese, 223)

**always fightin'**

Senior **Jaclyn Marszal** transferred to Delaware after playing her freshman season at the University of Notre Dame, going from the Fighting Irish to the Fightin' Blue Hens. Marszal is UD's top returning scorer from a season ago when she had 21 goals and 29 assists for 50 points. Entering her third season with the Blue & Gold, Marszal has 97 points (46g, 51a) in 32 games for Delaware after scoring two goals in five games at Notre Dame.

**no place like home**

Senior **Ella Rishko** played her first two collegiate seasons at Virginia Tech before transferring home to the First State to play her final two years as a Blue Hen alongside her sister **Lulu**. The Rehoboth Beach, Delaware native led UD with 36 goals and 55 draw controls in 2025, finishing with 45 total points. In two seasons at Virginia Tech, Rishko had 61 goals and 75 points over 32 games.

**SCORING SUPERLATIVES**

	'23	'24	'25	'26	TOT
<b>Multi-Goal Games</b>					
Ella Risho	11	2	11	8	32
Morgan Gore	2	5	9	5	21
Jaclyn Marszal	0	6	5	4	15
McKenzie Didio	2	1	0	5	8
Riley Sturtevant	0	0	4	3	7
Callie Drab	0	3	3	1	7
Lulu Rishko	--	--	2	3	5
Sam Paradise	--	1	4	--	5
Sophia Muscolino	--	0	0	3	3
Maggie Craytor	--	--	1	1	2
Grayson Buono	--	--	0	1	1
Sydney O'Donnell	--	--	0	1	1
Maggie Porter	--	--	--	1	1
<b>Hat Tricks</b>					
Ella Rishko	7	2	6	8	23
Morgan Gore	1	0	5	4	10
Jaclyn Marszal	0	4	2	1	7
Callie Drab	0	0	2	0	2
Sam Paradise	--	1	1	0	2
Riley Sturtevant	0	0	0	2	2
Maggie Craytor	--	--	1	1	2
McKenzie Didio	0	0	0	1	1
Sophia Muscolino	--	0	0	1	1
Grayson Buono	--	--	0	1	1
<b>Multi-Point Games</b>					
Ella Risho	12	6	12	10	40
Jaclyn Marszal	0	12	14	9	35
Morgan Gore	4	5	9	7	25
Callie Drab	0	7	6	3	16
Riley Sturtevant	0	0	4	5	9
McKenzie Didio	2	1	0	5	8
Sophia Muscolino	--	1	0	8	9
Lulu Rishko	--	--	3	3	6
Sam Paradise	--	1	5	--	6
Grayson Buono	--	--	0	4	4
Maggie Craytor	--	--	1	2	3
Sydney O'Donnell	--	--	0	2	2
Maggie Porter	--	--	--	2	2
Julia Ciufu	--	0	0	1	1
<b>Games with 5+ Points</b>					
Ella Risho	4	1	4	2	11
Jaclyn Marszal	0	4	3	2	9
Sophia Muscolino	--	0	0	4	4
Morgan Gore	0	0	1	1	2
Riley Sturtevant	0	0	0	1	1
McKenzie Didio	0	0	0	1	1
Grayson Buono	--	--	0	1	1
Callie Drab	0	0	1	0	1
<b>Games with 10+ Saves</b>					
Steph Marszal	--	4	3	3	10

ALTIG VS.				
OPPONENT	H	A	N	OVR
Army	0-1	0-0	0-0	0-1
<b>Austin Peay *</b>	<b>0-0</b>	<b>1-0</b>	<b>0-0</b>	<b>1-0</b>
Campbell	1-0	1-0	0-0	2-0
<b>Coastal Carolina</b>	<b>0-1</b>	<b>0-0</b>	<b>0-0</b>	<b>0-1</b>
Delaware State	1-0	0-0	0-0	1-0
Denver	0-0	0-1	0-0	0-1
<b>Drexel</b>	<b>0-2</b>	<b>1-2</b>	<b>0-1</b>	<b>1-5</b>
Duquesne	1-0	0-0	0-0	1-0
Elon	2-0	2-1	0-0	4-1
George Mason	0-0	0-1	0-0	0-1
<b>Georgetown</b>	<b>0-3</b>	<b>1-3</b>	<b>0-0</b>	<b>1-6</b>
Hofstra	0-2	2-0	0-0	2-2
<b>Jacksonville *</b>	<b>1-0</b>	<b>0-0</b>	<b>0-0</b>	<b>1-0</b>
James Madison	0-0	0-1	0-0	0-1
<b>Kennesaw State *</b>	<b>0-0</b>	<b>0-0</b>	<b>0-0</b>	<b>0-0</b>
Kent State	1-0	0-0	0-0	1-0
La Salle	1-0	0-1	0-0	1-1
Lafayette	2-0	0-0	0-0	2-0
Lehigh	1-0	1-0	0-0	2-0
<b>Liberty *</b>	<b>0-0</b>	<b>0-0</b>	<b>0-0</b>	<b>0-0</b>
<b>Lindenwood *</b>	<b>0-0</b>	<b>1-0</b>	<b>0-0</b>	<b>1-0</b>
Maryland	0-0	0-1	0-0	0-1
Monmouth	2-0	1-0	0-0	3-0
<b>Mount St. Mary's</b>	<b>2-0</b>	<b>1-0</b>	<b>0-0</b>	<b>3-0</b>
<b>Navy *</b>	<b>0-1</b>	<b>0-0</b>	<b>0-0</b>	<b>0-1</b>
Niagara	0-0	0-0	0-1	0-1
Old Dominion	1-0	1-0	0-0	2-0
Penn	0-0	0-1	0-0	0-1
Princeton	0-1	0-0	0-0	0-1
<b>Queens *</b>	<b>0-0</b>	<b>0-0</b>	<b>0-0</b>	<b>0-0</b>
<b>Rutgers</b>	<b>0-2</b>	<b>0-2</b>	<b>0-0</b>	<b>0-4</b>
<b>Saint Joseph's</b>	<b>0-1</b>	<b>0-1</b>	<b>0-0</b>	<b>0-2</b>
<b>Stetson *</b>	<b>1-0</b>	<b>0-0</b>	<b>0-0</b>	<b>1-0</b>
Stony Brook	0-1	0-2	0-1	0-4
<b>Temple</b>	<b>1-2</b>	<b>1-2</b>	<b>0-0</b>	<b>2-4</b>
Towson	1-2	1-0	0-1	2-3
<b>UMBC</b>	<b>2-1</b>	<b>2-0</b>	<b>0-0</b>	<b>4-1</b>
Wagner	1-0	1-0	0-0	2-0
William & Mary	2-0	0-2	0-0	2-2
<b>TOTALS</b>	<b>24-20</b>	<b>19-20</b>	<b>0-4</b>	<b>43-44</b>

**Bold** indicates 2026 opponent  
 \* Indicates first meeting in 2026

**impressive in the classroom**

In addition to their on-field success, the Hens have been showcasing their hard work in the classroom. The Blue Hens had a 3.52 team GPA during the 2025 fall semester and five student-athletes - **McKenzie Didio**, **Mia Didio**, **Amanda Gazelle**, **Morgan Gore** and **Jaclyn Marszal** - posted perfect 4.0 semesters.

**new opponents on schedule**

With Delaware beginning a New Era in the ASUN this season, the Blue Hens will be facing a number of first-time opponents. Eight of the team's 16 games will be against programs UD has never played, including seven of Delaware's eight ASUN matchups. The new opponents consist of Navy (Feb. 18), Austin Peay (March 19), Lindenwood (March 21), Jacksonville (March 26), Stetson (March 28), Kennesaw State (Apr. 9), Queens (Apr. 16) and Liberty (Apr. 22).

**matey family affair**

Junior defender **Mary Matey** is continuing a couple of family legacies as she is the fourth sister in her family to play Division I college lacrosse. She overlapped in Newark with her sister **Kellie Ann** who was also a defender for the Blue Hens from 2021-24). She also had a sister, Rachel, who played defense at James Madison (2019-23) and her oldest sister, Meghan, was a midfielder at Ohio State (2017-20).

Since 2021, Matey and her sisters have all worn #22 on the lacrosse field to honor their late father, Dave, who tragically passed away after a battle with cancer. He wore #22 as a college football linebacker at Ursinus.

**glenelg pipeline**

The Blue Hens have done well recruiting in Maryland, with 12 Marylanders on the 2026 roster. There are four Hens on the roster who hail from Howard County and attended high school in Glenelg. Senior twins **Jaclyn** and **Steph Marszal** (Catonsville) as well as sophomore **Nichelle Desbordes** (Ellicott City) all come from Glenelg Country School, while sophomore **Lara Hoeflich** (Glenelg) went to Glenelg High School.

**new head hen**

**Jordan Skolnick** was named the University of Delaware's Director of Athletics & Campus Recreation in January. Skolnick joined UD Athletics in 2016 and served as interim director of athletics & campus recreation since March 2025. He is the eighth person in the department's history to hold the permanent role. Skolnick successfully guided the department through its transitions to Conference USA and the Football Bowl Subdivision (FBS), while prioritizing a renewed focus on campus collaboration to increase partnerships and ensure the University's ability to capitalize on increased national exposure.

**for the 302**

Delaware is one of 11 states that are represented by one area code. Delaware is the 302, while the other states are: Alaska, Hawaii, Maine, Montana, New Hampshire, North Dakota, Rhode Island, South Dakota, Vermont, and Wyoming.

**birds of a feather**

With over 1,100 schools in the NCAA, the Blue Hens are one of two institutions with the nickname in the hen family. Pomona-Pitzer, a Division III institution, is nicknamed the Sagehens. Both South Carolina and Jacksonville State have the nickname Gamecocks and Coastal Carolina is the Chanticleers, which both fall in the rooster family.

**MILESTONE WATCH**

**100-Career Points**

Morgan Gore	91
-------------	----

**50-Career Ground Balls**

Maggie Farragher	45
Jaclyn Marszal	44
Kennedy Radziul	44
Morgan Gore	43

**50-Career Draw Controls**

Morgan Gore	49
-------------	----

**50-Career Caused Turnovers**

Kat Baseggio	41
Maggie Farragher	38
Kennedy Radziul	31

**GAMES/STARTS STREAKS**

	Consecutive	
	GP	GS
Kat Baseggio *	43	0
Callie Drab	43	1
Jaclyn Marszal *	43	8
Riley Sturtevant	27	2
Ella Rishko *	27	27
Lulu Rishko	25	0
Steph Marszal	20	20
Molly Baumgratz	19	0
Kennedy Radziul	19	0
Maggie Farragher	14	14
Lena Stolarick	12	0
Mary Matey	12	0
Maggie Porter	11	0
Maggie Craytor	11	0
Sydney O'Donnell	11	0
McKenzie Didio	10	1
Morgan Gore	8	8
Sophia Muscolino	8	0
Julia Ciufu	6	0
Grayson Buono	5	0
Ellie Dassoulas	1	1
Mia Didio	1	1
Kate Mercer	1	1
Julia Reagan	1	1
Meg MacMurray	1	0

\* indicates has played every game of UD career

2026 DELAWARE NUMERICAL ROSTER

#	NAME	POS.	YR.	HT.	HOMETOWN/HIGH SCHOOL (PREV. SCHOOL)
1	Stella Stolarick	A	So.	5-5	Haddonfield, N.J. / Haddonfield Memorial
2	Grayson Buono	A	So.	5-7	Wayne, Pa. / Radnor
3	Lara Hoeflich	D	So.	5-7	Glenelg, Md. / Glenelg High
4	Marin Mooney	A	Fr.	5-8	Villanova, Pa. / Radnor
6	Jenny Green	D	Fr.	5-5	Garnet Valley, Pa. / Garnet Valley
7	Julia Ciufu	M	Jr.	5-3	Reisterstown, Md. / Roland Park Country
8	Jaclyn Marszal	A	Sr.	5-8	Catonsville, Md. / Glenelg Country School (Notre Dame)
9	Kat Baseggio	D	Jr.	5-9	Guilford, Conn. / Guilford
10	McKenzie Didio	A	Sr.	5-6	Westport, Conn. / Staples
11	Julia Reagan	M	Sr.	5-3	East Atlantic Beach, N.Y. / Sacred Heart Academy
12	Erin Hussey	M	Fr.	5-7	Severna Park, Md. / Severna Park
13	Maggie Craytor	A	So.	6-0	Charlottesville, Va. / Western Albemarle
14	Sophia Muscolino	A	Jr.	5-4	Baldwinsville, N.Y. / Charles W. Baker
15	Meg MacMurray	A	So.	5-8	Chester Springs, Pa. / The Hill School (Maryland)
16	Callie Drab	A	Sr.	5-7	Suffern, N.Y. / Suffern
17	Morgan Gore	M	Sr.	5-6	Crofton, Md. / Arundel
18	Lena Stolarick	D	So.	5-4	Haddonfield, N.J. / Haddonfield Memorial
19	Maggie Porter	A	Fr.	5-5	Stevenson, Md. / St. Paul's School for Girls (Penn State)
20	Sam Paradise	M	Jr.	5-8	Perry Hall, Md. / Maryvale Preparatory
21	Kate Mercer	D	Sr.	5-8	Katonah, N.Y. / John Jay
22	Mary Matey	D	Jr.	5-6	Phoenixville, Pa. / Archbishop Carroll
23	Lulu Rishko	M	So.	5-5	Rehoboth Beach, Del. / Cape Henlopen
24	Kylie O'Brien	D	So.	5-6	Berwyn, Pa. / Academy of Notre Dame de Namur
25	Amanda Gazelle	M	Fr.	5-3	Odenton, Md. / Archbishop Spalding
26	Alison Swartout	M	Sr.	5-4	Charlottesville, Va. / Monticello
27	Maddy Mobilia	D	Jr.	5-1	New Rochelle, N.Y. / The Ursuline School
28	Maggie Farragher	D	Sr.	5-7	Evanston, Ill. / Evanston Township
29	Kennedy Radziul	D	So.	5-9	Northport, N.Y. / Northport
30	Marina Mersch	GK	Fr.	5-3	Media, Pa. / Cardinal O'Hara
31	Maddie George	GK	So.	5-9	Centreville, Md. / Queen Anne's County
32	Ella Rishko	A	Sr.	5-5	Rehoboth Beach, Del. / Cape Henlopen (Virginia Tech)
33	Sydney O'Donnell	M	So.	5-8	Downingtown, Pa. / Downingtown West
34	Riley Sturtevant	M	Sr.	5-7	Springfield, Va. / West Springfield
35	Nichelle Desbordes	M	So.	5-3	Ellicott City, Md. / Glenelg Country School
37	Mia Didio	M	Sr.	5-5	Westport, Conn. / Staples
38	Sadie Schultz	M	Fr.	5-6	Riverhead, N.Y. / Riverhead
40	Steph Marszal	GK	R-Sr.	5-4	Catonsville, Md. / Glenelg Country School
41	Molly Baumgratz	M	Jr.	5-8	Charlotte, N.C. / Charlotte Catholic
42	Ellie Dassoulas	A	Sr.	5-8	Towson, Md. / Roland Park Country School

GEOGRAPHICAL

Connecticut (3)

- 9 Kat Baseggio
- 10 McKenzie Didio
- 37 Mia Didio

Delaware (2)

- 32 Ella Rishko
- 23 Lulu Rishko

Illinois (1)

- 28 Maggie Farragher

Maryland (12)

- 3 Lara Hoeflich
- 7 Julia Ciufu
- 8 Jaclyn Marszal
- 12 Erin Hussey
- 17 Morgan Gore
- 19 Maggie Porter
- 20 Sam Paradise
- 25 Amanda Gazelle
- 31 Maddie George
- 35 Nichelle Desbordes
- 40 Steph Marszal
- 42 Ellie Dassoulas

North Carolina (1)

- 41 Molly Baumgratz

New Jersey (2)

- 18 Lena Stolarick
- 1 Stella Stolarick

New York (7)

- 11 Julia Reagan
- 14 Sophia Muscolino
- 16 Callie Drab
- 21 Kate Mercer
- 27 Maddy Mobilia
- 29 Kennedy Radziul
- 38 Sadie Schultz

Pennsylvania (8)

- 2 Grayson Buono
- 4 Marin Mooney
- 6 Jenny Green
- 15 Meg MacMurray
- 22 Mary Matey
- 24 Kylie O'Brien
- 30 Marina Mersch
- 33 Sydney O'Donnell

Virginia (3)

- 13 Maggie Craytor
- 26 Alison Swartout
- 34 Riley Sturtevant

PRO-NUN-SEE-AY-SHUNS

1 Stella Stolarick	STOLL-are-ick	27 Maddy Mobilia	Moe-BEAL-yuh
2 Grayson Buono	BYOU-no	28 Maggie Farragher	FAIR-uh-grr
3 Lara Hoeflich	LAH-ruh HOE-flick	29 Kennedy Radziul	RAD-zool
4 Marin Mooney	MARE-in	30 Marina Mersch	MERSH
7 Julia Ciufu	CHEW-foe	34 Riley Sturtevant	STIR-duh-vont
8 Jaclyn Marszal	MARZ-elle	35 Nichelle Desbordes	des-BORE-des
9 Kat Baseggio	Buh-SEE-GEE-oh	37 Mia Didio	DID-ee-oh
10 McKenzie Didio	DID-ee-oh	40 Steph Marszal	MARZ-elle
14 Sophia Muscolino	Mus-KUH-lee-no	41 Molly Baumgratz	BUM-gratz
18 Lena Stolarick	LEE-nuh STOLL-are-ick	42 Ellie Dassoulas	da-SOOL-is
22 Mary Matey	MAY-tee	AC Kara Nakrasius	Nah-KRAY-shus
26 Alison Swartout	SWORE-tout	AC Lilly Siskind	sis-KIND

ROSTER BY CLASS

SENIORS (13)

- Ellie Dassoulas
- McKenzie Didio
- Mia Didio
- Callie Drab
- Maggie Farragher
- Morgan Gore
- Jaclyn Marszal
- Steph Marszal
- Kate Mercer
- Julia Reagan
- Ella Rishko
- Riley Sturtevant
- Alison Swartout

JUNIORS (7)

- Kat Baseggio
- Molly Baumgratz
- Julia Ciufu
- Mary Matey
- Maddy Mobilia
- Sophia Muscolino
- Sam Paradise

SOPHOMORES (12)

- Grayson Buono
- Maggie Craytor
- Nichelle Desbordes
- Maddie George
- Lara Hoeflich
- Meg MacMurray
- Kylie O'Brien
- Sydney O'Donnell
- Kennedy Radziul
- Lulu Rishko
- Lena Stolarick
- Stella Stolarick

FRESHMEN (7)

- Amanda Gazelle
- Jenny Green
- Erin Hussey
- Marina Mersch
- Marin Mooney
- Maggie Porter
- Sadie Schultz

HEAR OUR NAMES





**THE ALTIG FILE**

**Hometown:** Millersville, Md.  
**Alma Mater:** James Madison '05  
**Degree:** Kinesiology  
**Years in Coaching:** 21st in 2026

**NOTABLE HIGHLIGHTS**

**Coach**  
 2015 IWLCA Assistant Coach of the Year  
 U.S. Lacrosse Virginia Chapter Hall of Fame  
 USA National Team Defensive Coordinator

**Player**  
 2x All-CAA selection  
 2x CAA Champion  
 2009 USA World Cup Training Team  
 2008 USA Prague Touring Team  
 2003 USA National Team

**AS DELAWARE HEAD COACH**

<b>Year</b>	7th in 2026
<b>Overall Record</b>	43-44
<b>Home</b>	24-20
<b>Away</b>	19-20
<b>Neutral</b>	0-4
<b>vs. Ranked Teams</b>	1-14
<b>In ASUN Games</b>	4-0
<b>Postseason</b>	0-3

**ALTIG YEAR-BY-YEAR**

YEAR	W-L	PCT.	CONF
2020	2-3	.400	1-0
2021	1-5	.167	0-0
2022	5-12	.294	2-4
2023	8-8	.500	4-3
2024	10-6	.625	3-5
2025	10-6	.625	6-2
2026	7-4	.636	4-0
<b>TOTAL</b>	<b>43-44</b>	<b>.494</b>	<b>20-14</b>

**First career win:** 17-8 vs. Duquesne (3/4/20)

**HEAD COACH AMY ALTIG**

Amy Altig enters her seventh season at the helm of the Fightin' Blue Hens in 2026. She was named the seventh coach of University of Delaware women's lacrosse program on June 3, 2019.

Altig has led the Blue Hens to immense success on the field, qualifying for the CAA Championship in three of four years since 2022. The program recorded back-to-back 10-win seasons in 2024-25, achieving the mark for the first time 2016, and UD's 7-1 record to begin the 2024 season was the best start since the 2016 season. Delaware won six CAA games in 2025, the most since joining the conference and the program's most league wins since 1999.

On March 11, 2022, the Blue Hens defeated No. 18 Temple on the road for their first win over a nationally-ranked opponent since 2017.

Delaware's student-athletes have taken home plenty of hardware since Altig arrived in Newark. Delaney McDaniel earned CAA Rookie of the Year honors in 2018, UD's first conference major award winner since 2016. Madison Hranicka was named the CAA Defensive Player of the Year in consecutive seasons (2023-24). The Blue Hens have earned 14 all-conference honors, led by three-straight All-CAA First Team selections by Hranicka (2022-24) and three by McDaniel. On the national level, Hranicka earned All-America honors in 2024 and all-region recognition in both 2023 and 2024. Erin Gormley was an all-region selection in 2025.

The Blue & Gold have had several statistical achievements with Altig at the helm. In 2025, the Blue Hens led the CAA and ranked sixth nationally in free position percentage (.545) while also ranking eighth in the country in caused turnovers per game (11.19). Against Lafayette in 2024, the Blue Hens set a program record for caused turnovers (26) and tied the record for ground balls (33). Goalkeeper Steph Marzsai finish ninth in the country in save percentage (.489) in 2024. Hranicka set the single-season program record in 2023 with 50 caused turnovers.

Altig arrived to Newark following nine seasons at Penn State University, where she was an assistant coach for six years and an associate head coach for the final three. She helped lead the Nittany Lions to 111 wins with seven NCAA Tournament appearances and two trips to the NCAA Tournament Final Four. During her tenure, she coached 19 All-Americans, 36 all-region performers, 40 all-conference selections in addition to more than 25 student-athletes who received academic honors. Additionally, PSU boasted three Conference Goalkeepers of the Year under Altig's guidance.

After helping Penn State to a third NCAA quarterfinal appearance in four years in 2015, Altig was named IWLCA Assistant Coach of the Year and was inducted to the U.S. Lacrosse Virginia Chapter Hall of Fame.

Prior to her time at PSU, Altig held assistant coaching stints at Princeton University (2007-10) and the University of Richmond (2005-06).

As a goalkeeper at James Madison University from 2001-05, Altig led the Dukes to two CAA titles, was a two-time all-conference pick and was selected to the North/South STX Senior All-Star Game. A two-time team captain, she also earned a nod to the 2004 CAA All-Tournament Team and still ranks in the Top 12 of three career statistical categories at JMU.

Altig earned a spot on the USA National Team in 2003 and was part of the 2009 USA World Cup Training Team and 2008 USA Prague Touring Team. She also served as a field coach for USA Tryouts from 2015-17. Since 2017, Altig has been the defensive coordinator/goalkeepers coach for the USA National Team.

A native of Millersville, Md., Altig earned a bachelor's degree in kinesiology with a concentration in sports management from James Madison in 2005. She and her wife, Megan, have two daughters, Ava, and Ryan, and a son, Brooks.

**ALTIG'S COACHING ASSIGNMENTS**

YEAR	SCHOOL	POSITION
2020-Pres.	Delaware	Head Coach
2017-19	Penn State	Associate Head Coach
2011-16	Penn State	Assistant Coach
2007-10	Princeton	Assistant Coach
2005-06	Richmond	Assistant Coach

**SUPERLATIVES UNDER ALTIG**

Most Goals	25, at Lindenwood (3/21/26)	Most Opp. Goals	20, 2x, last vs. Drexel (5/1/25)
Fewest Goals	2, 2x, last at Maryland (3/1/22)	Fewest Opp. Goals	3, 2x, last at Austin Peay (3/19/26)
Most SOG	36, vs. Delaware State (2/24/21)	Most Opp. SOG	36, at Maryland (3/1/22)
Fewest SOG	6, vs. Stony Brook (4/6/24)	Fewest Opp. SOG	6, 2x, last vs. Lafayette (3/6/24)
Most GBs	33, vs. Lafayette (3/6/24)	Most Opp. GBs	30, vs. William & Mary (4/9/22)
Most CTs	26, vs. Lafayette (3/6/24)	Most Opp. CTs	19, vs. Lafayette (3/6/24)
Most DCs	26, vs. Old Dominion (2/25/23)	Most Opp. DCs	28, vs. Georgetown (3/8/25)
Most Saves	21, at Maryland (3/1/22)	Most Opp. Saves	20, 2x, last at Old Dominion (3/26/22)

## ASSISTANT COACHES

### KARA NAKRASIOUS



Kara Nakrasious joined the coaching staff in August 2022 as an assistant coach and was promoted to associate head coach in June 2025. Nakrasious works primarily with the program's defensive and draw control units.

Under her guidance, the UD defense ranked in the top-10 nationally in 2024 and 2025 in caused turnovers per game. In 2024, the Blue Hens held opponents to the least number of goals allowed (160) since the 2017 season. Madison Hranicka earned back-to-back CAA Defensive Player of the Year recognition in 2023 and 2024.

At the draw, Nakrasious oversaw Delaware's unit that shattered the program record for draws in a single season (240) in 2023, averaging a CAA-leading 15.0 draw controls per game. Delaware set a program record with 26 draw controls in a single-game against Old Dominion. Danielle Livornese became UD's career draw control leader, finishing with 223. Ella Rishko set the individual single-game mark with 15 draw controls against Towson in 2025.

Prior to her arrival at UD, Nakrasious was on staff at Quinnipiac as an assistant coach in 2022, leading a defense that allowed a league-low 197 goals and ranked second in the MAAC with 8.88 caused turnovers per game.

Nakrasious was a five-year starter at Temple from 2016-21, where she was a four-year captain for the Owls. She broke the career draw control record with a total of 236 and ranked seventh in program history with 144 ground balls.

She was a two-time all-conference selection, earning All-AAC First Team honors in 2019 and second team recognition in 2021. Nakrasious was a four-time winner of the Devon Marie Lam "T" Means More Award which is given to the person who most exemplifies Temple Lacrosse through selflessness, dedication & desire for team success (2017-20). She was also a winner of the Enterprise Spirit & Sportsmanship Award (2017) & Parliament Award (2019) for the student-athlete who has demonstrated a devotion to the essence of sport through their acts of sportsmanship.

Nakrasious earned both her bachelor's (2020) and master's (2021) degrees from Temple University.

### SAMANTHA PRATT



Sam Pratt joined the Delaware women's lacrosse coaching staff as an associate head coach and offensive coordinator in August 2024.

In her first season with the Blue Hens, UD's offense averaged 13.06 goals per game to rank third in the CAA and was second in assists per game (6.25). Delaware led the conference and ranked sixth nationally with a .545 free position percentage, and Morgan Gore set the program record with 13 free position goals. Gore and Delaney McDaniel were named to the All-CAA Second Team while Lulu Rishko earned all-rookie honors.

Pratt came to Delaware after spending six seasons on the coaching staff at Mount St. Mary's. During her tenure, Pratt coached 29 student-athletes to all-league honors between the Northeast Conference (NEC) and the Metro Atlantic Athletic Conference (MAAC). The team posted a 63-35 record and sported a pair of NEC Offensive Players of the Year, an NEC Midfielder of the Year, and a NEC Rookie of the Year. Her offense in 2019 ranked 20th nationally in scoring with 14.11 goals per game. Two years later, the team finished 14th in the country with 15.06 goals per game.

Prior to joining the staff at Mount St. Mary's Pratt spent a season at La Salle where she served as offensive coordinator.

Pratt, then Sam Nolan, was a two-year team captain at UMBC (2013-17). She finished her career with 117 goals and 73 assists for 190 points, graduating as the program's all-time leader in assists, and ranked third in career points. She was a First Team All-America East selection in her final two seasons.

The Fallston, Maryland native earned a pair of degrees from UMBC in sociology (2016) and media and communication (2017). She received a master's degree in sport management from Mount St. Mary's in 2019.

Sam and her husband, Joe, a former UMBC men's soccer player, were married in 2022. The two have a pair of labrador retrievers, Finley & Champion.

### LILLY SISKIND



Lilly Siskind joined the Blue Hens after a five-year collegiate career at Old Dominion University, where she set multiple program records and garnered national recognition.

While at ODU, Siskind was a starter in 74 of 80 career games played. She collected 214 points with 149 goals and 65 assists over her five seasons with the program, adding 46 ground balls, 30 draw controls, and 33 caused turnovers.

Nationally, Siskind ranked in the top 10 for most career points in American Athletic Conference (AAC) history. In 2022, she ranked fourth & second in the AAC and 25th & 22nd national for most points and goals, respectively. Additionally, she earned First Team All-AAC in 2022, Second Team All-AAC in 2021, and VaSIDA All-State Second Team in 2021 & 2022.

Siskind left her mark on the ODU program, finishing third in career points, fourth career assists, and fifth in career goals.

Off the field, Siskind completed two bachelor's degrees in marketing and management along with a master's degree in sports management over her five-year tenure at ODU. She picked up an Academic All-District honor this past season as well as recognition from the AAC All-Academic, Conference USA academic honor roll, Big East academic honor roll, and ODU honor roll.

Siskind grew up in West Chester, Pennsylvania where she played lacrosse at Henderson High School. Her father was also a collegiate lacrosse player and spent his career at Towson where he was given All-American status his senior season.

## SUPPORT STAFF

**Jake Schrum**

**Tim Morrissey**

**Kelly Stafford**

**Dr. Christine Jehu**

Sport Administrator

Academic Advisor

Athletic Trainer

Sport Psychologist

**Austin Mark**

**Jack Levis**

**Brendan Thomas**

**Ryan Stiles**

Team Nutritionist

Equipment Manager

Athletic Communications

Strength & Conditioning Coach

# ATLANTIC SUN CONFERENCE

## STAFF

Jeff Bacon.....Commissioner  
 Kalista Gioglio.....Director / Executive Operations  
 Jerome Rodgers.....Deputy Commissioner / COO  
 Korinth Patterson.....Exec. Assoc. Comm. / Sport Admin. / SWA  
 Kaitlin Parsons.....Senior Assoc. Comm. / External Operations  
 Joseph Kaminski.....Senior Assoc. Comm. / Sport Admin.  
 Justin Burdette.....Associate Commissioner / CFO  
 David Miller.....Assistant Commissioner / Broadcasting  
 Elyse Appelblatt.....Assistant Commissioner / Digital Content  
 William Hall.....Assistant Commissioner / Sport Administration  
 Carl Mattox.....Assistant Commissioner / Sport Administration  
 Claire Johnson.....Director / Strategic Communications  
 Noah Walter.....Assistant Director / FB and BBall Operations  
 Rachel Cumberledge.....Assistant Director / Strategic Comms

## 2026 PRESEASON TEAM

**Preseason Offensive Player of the Year:** Kayleen Favreau, Queens

**Preseason Defensive Player of the Year:** Maggie Cuddy, Jacksonville

**Preseason Midfielder of the Year:** Katie Colavito, Liberty

**Preseason Goalkeeper of the Year:** Brookelynn Hodgkin, Jacksonville

### 2026 Preseason All-ASUN Team

A - Kayleen Favreau, Queens  
 A - Ainsley Scruggs, Jacksonville  
 A - Ava Rajala, Liberty  
 A - Luci Selander, Lindenwood  
 MF - Katie Colavito, Liberty  
 MF - Abby Moran, Jacksonville  
 MF - Gabrielle Beaudet, Coastal Carolina  
 MF - Allyx Berry, Jacksonville  
 D - Maggie Cuddy, Jacksonville  
 D - Jenna Burrow, Liberty  
 D - Grace Lord, Coastal Carolina  
 D - Savannah Donahue, Queens  
 D - Madeleine Klunder, Liberty  
 GK - Brookelynn Hodgkin, Jacksonville  
 \* a tie in voting resulted in a 14-person team

## 2026 PRESEASON POLL

Rank (1st place votes)	Points
1. Liberty (7)	79
2. Jacksonville	63
3. Coastal Carolina	62
<b>4. Delaware (2)</b>	<b>60</b>
5. Lindenwood	44
6. Queens	36
7. Kennesaw State	29
8. Stetson	20
9. Austin Peay	12



## 2026 ASUN WOMEN'S LACROSSE STANDINGS

School	ASUN	PCT.	Home	Away	Overall	PCT.	Home	Away	Neutral	Streak
<b>Delaware</b>	<b>4-0</b>	<b>1.000</b>	<b>2-0</b>	<b>2-0</b>	<b>7-4</b>	<b>.636</b>	<b>4-2</b>	<b>3-2</b>	<b>0-0</b>	<b>W6</b>
Jacksonville	3-1	.750	2-0	1-1	7-3	.700	6-0	1-3	0-0	W1
Stetson	2-1	.667	1-0	1-1	2-9	.182	1-4	1-5	0-0	L1
Kennesaw State	1-1	.500	1-0	0-1	6-5	.545	3-2	3-3	0-0	L1
Liberty	2-2	.500	0-2	2-0	4-7	.364	0-7	4-0	0-0	L2
Queens	2-2	.500	2-0	0-2	2-9	.182	2-4	0-5	0-0	W2
Coastal Carolina	1-2	.333	1-0	0-2	8-4	.667	5-0	3-4	0-0	W2
Lindenwood	1-3	.250	0-2	1-1	4-8	.333	2-3	2-5	0-0	L1
Austin Peay	0-4	.000	0-2	0-2	4-9	.308	2-5	2-4	0-0	L6

## 2026 ASUN WEEKLY AWARDS

### Offensive Player of the Week

Feb. 9 - Alexandra Horn, Coastal Carolina

Feb. 17 - Sienna Wyatt, Queens

Feb. 23 - Maeve Brennan, Jacksonville

March 2 - Shae Hagans, Jacksonville

March 9 - Luci Selander, Lindenwood

March 16 - Lexi Tinker, Kennesaw State

March 23 - Sophia Nesci, Liberty

March 30 - Jessica Giller, Jacksonville

April 6

April 13

April 20

April 27

### Defensive Player of the Week

Feb. 9 - Grace Lord, Coastal Carolina

Feb. 17 - Charlotte Sadler, Coastal Carolina

Feb. 23 - Charlotte Sadler, Coastal Carolina

March 2 - Maggie Cuddy, Jacksonville

March 9 - Brynn Delaney, Lindenwood

March 16 - Charlotte Sadler, Coastal Carolina

March 23 - Abby Moran, Jacksonville

**March 30 - Ella Rishko, Delaware**

April 6

April 13

April 20

April 27

## UNIVERSITY OF DELAWARE

## IN THE RANKINGS

The University of Delaware is ranked in the top 1.6% globally, among nearly 21,000 institutions, based on educational quality, employability, faculty quality and research. In late 2024, Wall Street Journal ranked UD at No. 10 among public universities and No. 26 among all U.S. universities based on student professional readiness and career outcomes.

**Physical Therapy graduate program**  
No. 1 in the nation  
(U.S. News & World Report)

One of 24 UD graduate programs ranked in the top-100 by U.S. News

**Entrepreneurship undergraduate program**  
No. 3 in the Mid-Atlantic  
(The Princeton Review)

**Chemical Engineering undergraduate program**  
No. 4 in the nation  
(U.S. News & World Report)

One of six UD undergraduate programs ranked in the top-100 by U.S. News

**Chemical Engineering graduate program**  
No. 8 in the nation  
(U.S. News & World Report)

One of 24 UD graduate programs ranked in the top-100 by U.S. News

**Online MBA program**  
No. 20 out of 355 in the nation  
(U.S. News & World Report)

**Online Master's in Education program**  
No. 20 out of 313 in the nation  
(U.S. News & World Report)

**Nursing undergraduate program**  
No. 40 in the nation  
(U.S. News & World Report)  
A 34-spot jump from last year's ranking

## BEST VALUE

UD ranks among the country's best value propositions, according to U.S. News & World Report, Wall Street Journal, Kiplinger's and Forbes. This summer, The Princeton Review ranked UD among its 209 Best Value Colleges for 2025, earning one of the publication's highest return-on-investment ratings. Money magazine awarded UD 4½ stars out of a possible five in its 2025-26 rating of America's best colleges. The University, according to Money, "stands out for its affordability" as a public college providing an excellent value for in-state students, and is considered one of the Best Colleges in the Northeast.

## distinguished history

In 1743, the school that would become the University of Delaware was just a tiny institution, with a graduating class of about a dozen. Three of those graduates – **Thomas McKean**, **George Read** and **James Smith** – would go on to sign the Declaration of Independence; Read would also sign the U.S. Constitution, helping launch a new paradigm of freedom for an entire nation and a beacon of liberty for much of the world.

## first in study abroad

In 1923, UD initiated a program to enhance students' learning by giving them an overseas experience. Influenced by the carnage he saw as an ambulance driver in World War I, professor **Raymond Kirkbride** believed that understanding other cultures was critical to promoting peace. His idea would grow into the first study-abroad program in the United States. Today approximately a third of all UD students participate in study abroad programs offered around the world. This year, the University celebrates the 10-year anniversary of its World Scholars Program, through which a cohort of new students experience their first UD semester abroad. These students return to UD for the spring and, as juniors, they can elect one of 40 study-abroad experiences.

## introducing ud's new leadership

Interim President **Laura Carlson** and Interim Provost **Bill Farquhar** have been at the helm since July 1. Carlson joined the University of Delaware community in 2022, serving as its chief academic officer when she became the University's 12th Provost. Farquhar has been a faculty member for more than 23 years in UD's Department of Kinesiology and Applied Physiology. He most recently served as the dean of UD's College of Health Sciences.

## student applications are climbing

Interest in a University of Delaware education continues to soar. UD received more than 40,000 applications for this year's class of first-year students, setting a UD record for the seventh consecutive year. Over the last year, UD hosted more than 38,000 visitors (prospective students and their families) at open houses and campus tours, and awarded more than \$200 million in financial aid to its newest students.

## incorporating ai into curriculum

AI has the potential to reshape higher education. UD has applied this technology in myriad ways and continues to explore further applications for artificial intelligence – including the launch of new academic offerings like an undergraduate major, a graduate degree program and a certificate; the creation of UD's First State AI Institute; and the incorporation of generative AI into curricula.

## PROMINENT ALUMNI



joe Biden '65



chris christie '84



joe flacco '08



elena delle donne '13

# delaware STARTERS BY GAME

OPPONENT	D	D	D	D	D/M	M	M	M/A	A	A	A	GK
at Temple	Baseggio	L. Stolarick	Matey	Farragher	Radziul	Gore	Sturtevant	Baumgratz	J. Marszal	Porter	E. Rishko	S. Marszal
Rutgers	Baseggio	L. Stolarick	Matey	Farragher	Radziul	Gore	L. Rishko	Baumgratz	Drab	Porter	E. Rishko	S. Marszal
Navy	Baseggio	L. Stolarick	Matey	Farragher	Radziul	L. Rishko	Sturtevant	Baumgratz	J. Marszal	Drab	E. Rishko	S. Marszal
UMBC	Baseggio	L. Stolarick	Matey	Farragher	Radziul	Gore	L. Rishko	Baumgratz	J. Marszal	Muscolino	E. Rishko	S. Marszal
at Georgetown	Baseggio	L. Stolarick	Matey	Farragher	Radziul	Gore	L. Rishko	Baumgratz	J. Marszal	Muscolino	E. Rishko	S. Marszal
at Drexel	Baseggio	L. Stolarick	Matey	Farragher	Radziul	Gore	L. Rishko	Baumgratz	J. Marszal	Muscolino	E. Rishko	S. Marszal
Mount St. Mary's	Baseggio	L. Stolarick	Matey	Farragher	Radziul	Gore	L. Rishko	Baumgratz	J. Marszal	Muscolino	E. Rishko	S. Marszal
at Austin Peay	Baseggio	L. Stolarick	Matey	Farragher	Radziul	Gore	L. Rishko	Baumgratz	J. Marszal	Muscolino	E. Rishko	S. Marszal
at Lindenwood	Baseggio	L. Stolarick	Matey	Farragher	Radziul	Gore	L. Rishko	Baumgratz	J. Marszal	Muscolino	E. Rishko	S. Marszal
Jacksonville	Baseggio	L. Stolarick	Matey	Farragher	Radziul	Gore	Sturtevant	Baumgratz	J. Marszal	Muscolino	E. Rishko	S. Marszal
Stetson	Sturtevant	Reagan	Mi. Didio	Farragher	Gore	E. Rishko	Mercer	Dassoulas	J. Marszal	Drab	Mc. Didio	S. Marszal
Saint Joseph's												
Kennesaw State												
Coastal Carolina												
at Queens												
at Liberty												

# delaware STAT LEADERS BY GAME

OPPONENT	GOALS	ASSISTS	POINTS	SOG	GB	CT	DC	SAVES
at Temple	Gore/E. Rishko (3)	Drab/J. Marszal (2)	Drab/Gore/E. Rishko (3)	E. Rishko (6)	Radziul/E. Rishko (3)	Radziul (3)	E. Rishko (9)	S. Marszal (5)
Rutgers	4 players (1)	Drab/J. Marszal (1)	6 players (1)	Porter/E. Rishko (3)	Baseggio (5)	Baseggio/Farragher (4)	4 players (1)	S. Marszal (8)
Navy	E. Rishko (3)	Sturtevant (2)	E. Rishko (3)	E. Rishko (6)	S. Marszal (3)	Farragher/E. Rishko (2)	E. Rishko (9)	S. Marszal (10)
UMBC	E. Rishko (4)	Craytor (2)	E. Rishko (4)	Gore/E. Rishko (6)	Farragher (3)	6 players (1)	Baumgratz/E. Rishko (8)	S. Marszal (10)
at Georgetown	E. Rishko (4)	Muscolino (4)	Muscolino (5)	E. Rishko (4)	Radziul (4)	3 players (2)	E. Rishko (2)	S. Marszal (10)
at Drexel	Sturtevant/E. Rishko (3)	7 players (1)	E. Rishko (4)	Sturtevant (4)	Radziul (4)	Radziul (5)	E. Rishko (4)	S. Marszal (6)
Mount St. Mary's	E. Rishko (4)	Muscolino (5)	E. Rishko (8)	E. Rishko (5)	5 players (2)	3 players (2)	Baumgratz (9)	S. Marszal (8)
at Austin Peay	Gore/J. Marszal (4)	Muscolino (3)	J. Marszal (6)	3 players (5)	6 players (2)	Baseggio (3)	Baumgratz (5)	S. Marszal (4)
at Lindenwood	Buono (5)	J. Marszal (6)	J. Marszal (8)	Buono (5)	Matey (3)	Baseggio/Radziul (2)	Baumgratz (6)	S. Marszal (3)
Jacksonville	Mc. Didio (4)	J. Marszal/Muscolino (3)	Mc. Didio/Muscolino (5)	Mc. Didio (4)	5 players (2)	E. Rishko (4)	E. Rishko (9)	S. Marszal (5)
Stetson	E. Rishko (6)	3 players (1)	E. Rishko (6)	E. Rishko (7)	J. Marszal/L. Stolarick (3)	E. Rishko (4)	E. Rishko (9)	S. Marszal (11)
Saint Joseph's								
Kennesaw State								
Coastal Carolina								
at Queens								
at Liberty								



# delaware HIGHS AND LOWS

<b>GAME HIGHS</b>	<b>2026</b>	<b>ALTIG ERA</b>
Goals	25, at Lindenwood (3/21/26)	25, at Lindenwood (3/21/26)
Assists	17, at Lindenwood (3/21/26)	17, at Lindenwood (3/21/26)
Goals in a Quarter	9, at Lindenwood (3/21/26)	9, 3x, last Q3 at Lindenwood (3/21/26)
1H Goals	14, at Austin Peay (3/19/26)	14, at Austin Peay (3/19/26)
2H Goals	16, at Lindenwood (3/21/26)	16, at Lindenwood (3/21/26)
Shots Attempted	50, vs. Stetson (3/28/26)	50, vs. Stetson (3/28/26)
Shots on Goal	30, 2x, last vs. Stetson (3/28/26)	36, vs. Delaware State (2/24/21)
Ground Balls	21, 3x, last vs. Stetson (3/28/26)	33, vs. Lafayette (3/6/24)
Draw Controls	20, vs. Jacksonville (3/26/26)	26, vs. Old Dominion (2/25/23)
Turnovers	22, at Temple (2/6/26)	28, vs. Old Dominion (2/25/23)
Caused Turnovers	16, vs. Rutgers (2/13/26)	26, vs. Lafayette (3/6/24)
Saves	10, 3x, last at Georgetown (3/7/26)	21, at Maryland (3/1/22)
Clears	19, at Georgetown (3/7/26)	27, vs. Lafayette (3/6/24)

<b>GAME LOWS</b>	<b>2026</b>	<b>ALTIG ERA</b>
Goals	4, vs. Rutgers (2/13/26)	2, at Maryland (3/1/22)
Assists	2, vs. Rutgers (2/13/26)	0, 2x, last at La Salle (2/27/21)
Goals in a Quarter	0, 4x, last Q3 at Georgetown (3/7/26)	0, 21x, last Q3 at Georgetown (3/7/26)
1H Goals	0, vs. Rutgers (2/13/26)	0, 3x, last vs. Rutgers (2/13/26)
2H Goals	3, vs. Navy (2/18/26)	1, 2x, last vs. Stony Brook (5/4/23)
Shots Attempted	20, vs. Navy (2/18/26)	7, at Stony Brook (4/6/24)
Shots on Goal	9, vs. Rutgers (2/13/26)	6, at Stony Brook (4/6/24)
Ground Balls	8, vs. Navy (2/18/26)	6, vs. Temple (2/20/21)
Draw Controls	3, at Georgetown (3/7/26)	3, at Georgetown (3/7/26)
Turnovers	8, vs. Stetson (3/28/26)	8, vs. Stetson (3/28/26)
Caused Turnovers	6, 2x, last vs. UMBC (3/4/26)	2, 2x, last at Stony Brook (3/18/23)
Saves	1, vs. Stetson (3/28/26)	1, vs. Stetson (3/28/26)
Clears	13, 3x, last vs. Stetson (3/28/26)	10, at Monmouth (3/30/25)

## PLAYER HIGHS UNDER ALTIG

Goals	6, 2x, last Ella Rishko vs. Stetson, 3/28/26
Assists	7, Delaney McDaniel, vs. Lafayette, 2/15/23
Points	9, Jaclyn Marszal, at William & Mary, 3/30/24
Shots Attempted	13, Mia DeRuggiero, vs. Elon, 3/7/20
Shots on Goal	8, 3x, last Lizzie Hsu, at Hofstra, 4/8/23
Ground Balls	8, Madison Hranicka, vs. Lafayette, 3/6/24
Caused Turnovers	11, Madison Hranicka, vs. Lafayette, 3/6/24
Turnovers	7, Mia DeRuggiero, vs. Duquesne, 3/4/20
Draw Controls	15, Ella Rishko, at Towson, 4/13/25
Saves	18, Kate Brewster, at Rutgers, 2/15/20

opponent

# HIGHS AND LOWS

**GAME HIGHS****2026****ALTIG ERA**

Goals	15, vs. Navy (2/18/26)	20, 2x, last at Drexel (5/1/25)
Goals in a Quarter	6, Q4, at Temple (2/6/26)	9, Q3 vs. Stony Brook (5/4/23)
1H Goals	9, vs. Navy (2/18/26)	12, 3x, at Drexel (5/1/25)
2H Goals	9, at Temple (2/6/26)	11, 4x, last vs. Stony Brook (5/4/23)
Shots Attempted	30, vs. Navy (2/18/26)	46, vs. Hofstra (4/14/24)
Shots on Goal	21, vs. Navy (2/18/26)	36, at Maryland (3/1/22)
Ground Balls	18, at Temple (2/6/26)	30, vs. William & Mary (4/9/22)
Draw Controls	16, at Georgetown (3/7/26)	28, vs. Georgetown (3/8/25)
Turnovers	22, vs. Rutgers (2/13/26)	34, vs. Lafayette (3/6/24)
Caused Turnovers	15, at Temple (2/6/26)	19, vs. Lafayette (3/6/24)
Saves	14, vs. Stetson (3/28/26)	20, 2x, last at Old Dominion (3/26/22)
Clears	18, at Georgetown (3/7/26)	26, vs. Towson (3/24/24)

**GAME LOWS****2026****ALTIG ERA**

Goals	3, at Austin Peay (3/19/26)	3, 2x, last at Austin Peay (3/19/26)
Goals in a Quarter	0, 7x, last Q4 at Lindenwood (3/21/26)	0, 27x, last Q4 at Lindenwood (3/21/26)
1H Goals	0, at Austin Peay (3/19/26)	0, at Austin Peay (3/19/26)
2H Goals	0, vs. Mount St. Mary's (3/14/26)	0, 2x, last vs. Mount St. Mary's (3/14/26)
Shots Attempted	7, at Austin Peay (3/19/26)	7, at Austin Peay (3/19/26)
Shots on Goal	7, 2x, last vs. Stetson (3/28/26)	6, 2x, last vs. Lafayette (3/6/24)
Ground Balls	10, 2x, last at Austin Peay (3/19/26)	6, at Campbell (4/11/25)
Draw Controls	5, vs. Stetson (3/28/26)	2, vs. Towson (3/24/24)
Turnovers	8, vs. Navy (2/18/26)	7, at Stony Brook (3/18/23)
Caused Turnovers	3, at Austin Peay (3/19/26)	2, at Drexel (3/30/22)
Saves	3, at Georgetown (3/7/26)	2, at Stony Brook (4/6/24)
Clears	7, at Lindenwood (3/21/26)	7, 2x, last at Lindenwood (3/21/26)

## DELAWARE SINGLE GAME RECORDS

**INDIVIDUAL****TEAM**

Goals	11, Ann Pasquariello, vs. Hofstra, 5/12/79	36, vs. Towson State, 4/24/86
Assists	9, 2x, last Mia DeRuggiero vs. Oregon 3/27/19	18, vs. Hofstra, 4/22/90
Points	16, Karen Emas, vs. Bucknell, 4/17/84	49, vs. Towson State, 4/24/86
Shots Attempted	--	65, vs. Towson State, 4/24/86
Shots on Goal	8, 3x, last Lizzie Hsu, at Hofstra, 4/8/23	36, vs. Delaware State, 2/24/21
Ground Balls	17, Lisa Blanc, vs. Lehigh, 5/8/83	88, vs. Bucknell, 4/18/87
Caused Turnovers	11, Madison Hranicka, vs. Lafayette, 3/6/24	26, vs. Lafayette, 3/6/24
Draw Controls	15, Ella Rishko, at Towson, 4/13/25	26, vs. Old Dominion, 2/25/23
Saves	36, Lisa McBeth, at West Chester, 5/5/78	36, vs. West Chester, 5/5/78

# delaware SEASON STATS

## 2026 University of Delaware Women's Lacrosse Overall Statistics (as of Mar 28, 2026)

Record:	Overall	Home	Away	Neutral
All Games	7-4	4-2	3-2	0-0
Conference	4-0	2-0	2-0	0-0
Non-Conference	3-4	2-2	1-2	0-0

Date	Opponent	WL	Score	Att.
2/06/26	at Temple	L	10-12	248
2/13/26	RUTGERS	L	4-12	293
2/18/26	NAVY	L	10-15	274
3/04/26	UMBC	W	16-8	219
3/07/26	at Georgetown	L	8-9	617
3/11/26	at Drexel	W	13-6	300
3/14/26	MOUNT ST. MARY'S	W	17-5	563
3/19/26	at Austin Peay	W	19-3	98
3/21/26	at Lindenwood (Mo)	W	25-7	146
3/26/26	JACKSONVILLE	W	14-13	639
3/28/26	STETSON	W	16-6	362

Team Statistics	DELAWARE	OPP
<b>SHOT STATISTICS</b>		
Goals-Shot Att.	152-343	96-216
Goals Per Game	13.82	8.73
Shot Pct.	.443	.444
Shots on Goal-Att.	237-343	166-216
SOG Pct.	.691	.769
Shots/Game	31.2	19.6
Assists	86	58
<b>FREE POSITION OPPORTUNITIES</b>		
Free Position Made-Att.	23-52	23-46
Free Position pct.	.442	.500
<b>GOAL BREAKDOWN</b>		
Total Goals	152	96
Free Position	23	23
Unassisted	66	38
Overtime	0	0
Goals Scored Avg	13.82	8.73
<b>GROUND BALLS</b>		
Draw Controls	151	112
<b>TURNOVERS</b>		
Caused Turnovers	149	169
<b>CLEARs</b>		
Clear Pct.	.889	.807
<b>SHOT CLOCK VIOLATIONS</b>		
	6	5
<b>ATTENDANCE</b>		
Total	2,350	1,409
Dates-Avg Per Date	6/392	5/282
Neutral Site #-Avg	0/	

#	Player	GP	G	A	PTS	SH	GW	GB	DC	TO	CT	FOULS
32	Rishko, Ella	11	32	9	41	69	0	14	61	18	19	1
14	Muscolino, Sophia	8	12	22	34	31	1	8	0	11	0	0
8	Marszal, Jaclyn	11	12	19	31	35	1	11	1	25	3	0
17	Gore, Morgan	10	18	4	22	38	0	4	11	13	6	4
34	Sturtevant, Riley	11	15	5	20	27	2	8	0	4	10	2
10	Didio, McKenzie	10	15	2	17	26	1	4	0	3	0	0
2	Buono, Grayson	10	8	5	13	15	0	1	7	2	4	1
16	Drab, Callie	11	7	6	13	15	0	7	0	17	0	2
19	Porter, Maggie	11	9	3	12	25	0	4	0	9	4	1
23	Rishko, Lulu	11	9	2	11	33	2	9	6	8	6	2
13	Craytor, Maggie	11	6	3	9	8	0	3	0	2	0	0
33	O'Donnell, Sydney	11	5	1	6	12	0	4	0	2	4	3
7	Ciufo, Julia	8	3	3	6	7	0	4	0	2	2	0
15	MacMurray, Meg	4	1	1	2	1	0	0	0	0	0	0
29	Radziul, Kennedy	11	0	1	1	0	0	24	0	3	19	13
9	Baseggio, Kat	11	0	0	0	0	0	21	0	6	13	9
41	Baumgratz, Molly	11	0	0	0	0	0	0	41	2	3	1
42	Dassoulas, Ellie	1	0	0	0	0	0	0	0	1	0	0
37	Didio, Mia	2	0	0	0	0	0	0	0	0	0	0
28	Farragher, Maggie	11	0	0	0	0	0	13	1	1	11	10
40	Marszal, Steph	11	0	0	0	0	0	16	0	1	1	0
22	Matey, Mary	11	0	0	0	1	0	10	17	5	3	6
21	Mercer, Kate	5	0	0	0	0	0	0	0	1	0	0
30	Mersch, Marina	1	0	0	0	0	0	0	0	0	0	0
24	O'Brien, Kylie	1	0	0	0	0	0	0	0	0	0	0
11	Reagan, Julia	1	0	0	0	0	0	0	0	0	0	0
18	Stolarick, Lena	11	0	0	0	0	0	13	3	4	6	5
TM	Team	11	0	0	0	0	0	3	9	0	1	
<b>Totals</b>		<b>11</b>	<b>152</b>	<b>86</b>	<b>238</b>	<b>343</b>	<b>7</b>	<b>178</b>	<b>151</b>	<b>149</b>	<b>114</b>	<b>61</b>
<b>Opponents</b>		<b>11</b>	<b>96</b>	<b>58</b>	<b>154</b>	<b>216</b>	<b>4</b>	<b>154</b>	<b>112</b>	<b>169</b>	<b>89</b>	<b>78</b>

#	Goalie	GP	MIN	GA	GAA	SAVE	PCT	W-L-T
40	Marszal, Steph	11	660:00	96	8.73	70	.422	7-4-0
<b>Totals</b>		<b>11</b>	<b>660:00</b>	<b>96</b>	<b>8.73</b>	<b>70</b>	<b>.422</b>	<b>7-4-0</b>
<b>Opponents</b>		<b>16</b>	<b>660:00</b>	<b>152</b>	<b>13.82</b>	<b>85</b>	<b>.359</b>	<b>4-7-0</b>

Goals by Period	1st	2nd	3rd	4th	Total
Delaware	37	44	30	41	152
Opponents	23	28	23	22	96

Saves by Period	1st	2nd	3rd	4th	Total
Delaware	19	16	15	20	70
Opponents	24	24	21	16	85

Shots by Period	1st	2nd	3rd	4th	Total
Delaware	84	98	80	81	343
Opponents	51	55	56	54	216

Shot on Goal	1st	2nd	3rd	4th	Total
Delaware	55	57	44	48	204
Opponents	36	33	33	33	135

# delaware NCAA RANKINGS

Statistic	National Rank	Conference Rank	Value	National Leader	Value	Conference Leader	Value
Assists Per Game (120 ranked)	14	1	7.82	Massachusetts	9.70	Delaware	7.82
Assists Per Game (0 ranked)							
Caused Turnovers Per Game (119 ranked)	23	2	10.36	Liberty	16.36	Liberty	16.36
Clearing Percentage (120 ranked)	47	3	0.889	North Carolina	0.962	Jacksonville	0.917
Draw Control Percentage (120 ranked)	27	4	0.574	Loyola Maryland	0.682	Jacksonville	0.597
Draw Controls Per Game (120 ranked)	34	3	13.73	Dartmouth	17.90	Lindenwood	15.67
Face-Off Win Percentage (0 ranked)							
Fouls Per Game (120 ranked)	34	1	5.55	LIU	1.45	Delaware	5.55
Free Position Percentage (119 ranked)	74	6	0.442	Dartmouth	0.649	Queens (NC)	0.541
Ground Balls Per Game (119 ranked)	39	3	16.18	Wofford	22.45	Liberty	20.91
Points Per Game (120 ranked)	16	1	21.64	North Carolina	29.00	Delaware	21.64
Red Cards (1 ranked)				Brown Longwood	1 1		
Saves Percentage (120 ranked)	59	3	0.422	Maryland	0.534	Coastal Carolina	0.464
Scoring Defense (120 ranked)	22	2	8.73	Colorado	5.56	Coastal Carolina	8.67
Scoring Margin (68 ranked)	18	1	5.09	North Carolina	12.18	Delaware	5.09
Scoring Offense (120 ranked)	22	2	13.82	North Carolina	19.64	Jacksonville	14.00
Shot Percentage (120 ranked)	41	3	0.443	North Carolina	0.520	Jacksonville	0.481
Shots Per Game (120 ranked)	14	1	31.18	North Carolina	37.73	Delaware	31.18
Shots on Goal Per Game (120 ranked)	27	3	21.55	North Carolina	28.36	Jacksonville	22.80
Turnovers Per Game (120 ranked)	45	2	13.55	East Carolina	8.44	Jacksonville	13.50
Win Percentage (120 ranked)	36	3	0.636	Maryland	1.000	Jacksonville	0.700
Yellow Cards (118 ranked)	93	8	10	Louisville	25	Kennesaw St.	19

# delaware NCAA RANKINGS

Statistic	Player	National Rank	Conference Rank	Value	National Leader	Value	Conference Leader	Value
Assists (139 ranked)	Sophia Muscolino	35	1	22	Gracin Emerson, Duquesne	49	Alexandra Horn, Coastal Carolina	22
	Jaelyn Marszal	57	5	19				22
Assists Per Game (150 ranked)	Jaelyn Marszal	62	4	1.73	Gracin Emerson, Duquesne	4.90	Alexandra Horn, Coastal Carolina	1.83
Caused Turnovers Per Game (150 ranked)	Kennedy Radziul	51	5	1.73	Reagan O'Brien, Johns Hopkins	4.58	Lauren Dobbs, Kennesaw St.	2.36
	Ella Rishko	51	5	1.73				2.36
Draw Controls Per Game (150 ranked)	Ella Rishko	47	4	5.55	Maya Kendall, Dartmouth	12.70	Abby Moran, Jacksonville	11.50
	Molly Baumgratz	91	10	3.73				11.50
Face-Off Win Percentage (0 ranked)								
Free Position Goals Per Game (147 ranked)					Caroline Keil, Denver	1.27	Jessica Giller, Jacksonville	1.00
Free Position Percentage (118 ranked)					Kate Quinn, Drexel	0.900	Jessica Giller, Jacksonville	0.769
Goals (147 ranked)	Ella Rishko	38	1	32	Chloe Humphrey, North Carolina	57	Ella Rishko, Delaware	32
Goals Per Game (149 ranked)	Ella Rishko	39	1	2.91	Chloe Humphrey, North Carolina	5.18	Ella Rishko, Delaware	2.91
Goals-Against Average (114 ranked)	Steph Marszal	18	2	8.73	Elena Oh, Colorado	6.22	Charlotte Sadler, Coastal Carolina	8.67
Ground Balls Per Game (150 ranked)	Kennedy Radziul	85	6	2.18	Brooke Meltcher, Wofford	5.64	Maddie Eckert, Stetson	2.91
	Kat Baseggio	138	12	1.91				2.91
Points (140 ranked)	Ella Rishko	78	5	41	Chloe Humphrey, North Carolina	83	Luci Selander, Lindenwood	50
	Sophia Muscolino	140	9	34				50
Points Per Game (149 ranked)	Ella Rishko	78	5	3.73	Chloe Humphrey, North Carolina	7.55	Kayleen Favreau, Queens (NC)	4.27
Save Percentage (114 ranked)	Steph Marszal	56	4	0.422	Haley Richards, Louisville	0.543	Charlotte Sadler, Coastal Carolina	0.473
Saves (149 ranked)	Steph Marszal	78	6	70	Haley Richards, Louisville	152	Maddie Eckert, Stetson	107
Saves Per Game (114 ranked)	Steph Marszal	82	5	6.36	Haley Richards, Louisville	12.67	Maddie Eckert, Stetson	9.73
Shot Percentage (148 ranked)	Morgan Gore	148	11	0.474	Emma Raines, Duquesne	0.725	Ainsley Scruggs, Jacksonville	0.618
Shots Per Game (148 ranked)	Ella Rishko	39	2	6.27	Chloe Humphrey, North Carolina	10.00	Kayleen Favreau, Queens (NC)	6.82
Shots on Goal Per Game (150 ranked)	Ella Rishko	46	3	4.45	Chloe Humphrey, North Carolina	7.55	Kayleen Favreau, Queens (NC)	4.82

**#1 STELLA STOLARICK | A | SO. | HADDONFIELD, N.J.**

CAREER-HIGHS		SEASON-HIGHS	
GOALS	N/A	GOALS	N/A
ASSISTS	N/A	ASSISTS	N/A
POINTS	N/A	POINTS	N/A
SHOTS ON GOAL	N/A	SHOTS ON GOAL	N/A
GROUND BALLS	N/A	GROUND BALLS	N/A
CAUSED TURNOVERS	N/A	CAUSED TURNOVERS	N/A
DRAW CONTROLS	N/A	DRAW CONTROLS	N/A

CAREER STATS								
YEAR	GP/GS	G	A	PTS	SOG	GB	CT	DC
2025	0/0	0	0	0	0	0	0	0
2026	0/0	0	0	0	0	0	0	0
<b>TOTAL</b>	<b>0/0</b>	<b>0</b>	<b>0</b>	<b>0</b>	<b>0</b>	<b>0</b>	<b>0</b>	<b>0</b>

**#2 GRAYSON BUONO | A | SO. | WAYNE, PA.**

CAREER-HIGHS		SEASON-HIGHS	
GOALS	5, at Lindenwood, 3/21/26	GOALS	5, at Lindenwood, 3/21/26
ASSISTS	2, at Austin Peay, 3/19/26	ASSISTS	2, at Austin Peay, 3/19/26
POINTS	5, at Lindenwood, 3/21/26	POINTS	5, at Lindenwood, 3/21/26
SHOTS ON GOAL	5, at Lindenwood, 3/21/26	SHOTS ON GOAL	5, at Lindenwood, 3/21/26
GROUND BALLS	1, vs. Mount St. Mary's, 3/14/26	GROUND BALLS	1, vs. Mount St. Mary's, 3/14/26
CAUSED TURNOVERS	2, at Austin Peay, 3/19/26	CAUSED TURNOVERS	2, at Austin Peay, 3/19/26
DRAW CONTROLS	5, vs. Stony Brook, 3/23/25	DRAW CONTROLS	4, vs. Stetson, 3/28/26

CAREER STATS								
YEAR	GP/GS	G	A	PTS	SOG	GB	CT	DC
2025	13/2	0	0	0	0	0	1	21
2026	10/0	8	5	13	11	1	4	7
<b>TOTAL</b>	<b>23/2</b>	<b>8</b>	<b>5</b>	<b>13</b>	<b>11</b>	<b>1</b>	<b>5</b>	<b>28</b>

**#3 LARA HOEFELICH | D | SO. | GLENELG, MD.**

CAREER-HIGHS		SEASON-HIGHS	
GOALS	N/A	GOALS	N/A
ASSISTS	N/A	ASSISTS	N/A
POINTS	N/A	POINTS	N/A
SHOTS ON GOAL	N/A	SHOTS ON GOAL	N/A
GROUND BALLS	N/A	GROUND BALLS	N/A
CAUSED TURNOVERS	1, vs. Temple, 2/7/25	CAUSED TURNOVERS	N/A
DRAW CONTROLS	N/A	DRAW CONTROLS	N/A

CAREER STATS								
YEAR	GP/GS	G	A	PTS	SOG	GB	CT	DC
2025	2/0	0	0	0	0	0	1	0
2026	0/0	0	0	0	0	0	0	0
<b>TOTAL</b>	<b>2/0</b>	<b>0</b>	<b>0</b>	<b>0</b>	<b>0</b>	<b>0</b>	<b>1</b>	<b>0</b>

**#4 MARIN MOONEY | A | FR. | VILLANOVA, PA.**

CAREER-HIGHS		SEASON-HIGHS	
GOALS	N/A	GOALS	N/A
ASSISTS	N/A	ASSISTS	N/A
POINTS	N/A	POINTS	N/A
SHOTS ON GOAL	N/A	SHOTS ON GOAL	N/A
GROUND BALLS	N/A	GROUND BALLS	N/A
CAUSED TURNOVERS	N/A	CAUSED TURNOVERS	N/A
DRAW CONTROLS	N/A	DRAW CONTROLS	N/A

CAREER STATS								
YEAR	GP/GS	G	A	PTS	SOG	GB	CT	DC
2026	0/0	0	0	0	0	0	0	0
<b>TOTAL</b>	<b>0/0</b>	<b>0</b>	<b>0</b>	<b>0</b>	<b>0</b>	<b>0</b>	<b>0</b>	<b>0</b>

**#6 JENNY GREEN | D | FR. | GARNET VALLEY, PA.**

CAREER-HIGHS		SEASON-HIGHS	
GOALS	N/A	GOALS	N/A
ASSISTS	N/A	ASSISTS	N/A
POINTS	N/A	POINTS	N/A
SHOTS ON GOAL	N/A	SHOTS ON GOAL	N/A
GROUND BALLS	N/A	GROUND BALLS	N/A
CAUSED TURNOVERS	N/A	CAUSED TURNOVERS	N/A
DRAW CONTROLS	N/A	DRAW CONTROLS	N/A

CAREER STATS								
YEAR	GP/GS	G	A	PTS	SOG	GB	CT	DC
2026	0/0	0	0	0	0	0	0	0
<b>TOTAL</b>	<b>0/0</b>	<b>0</b>	<b>0</b>	<b>0</b>	<b>0</b>	<b>0</b>	<b>0</b>	<b>0</b>

**#7 JULIA CIUFO | M | JR. | REISTERSTOWN, MD.**

CAREER-HIGHS		SEASON-HIGHS	
GOALS	1, 4x, last vs. Stetson, 3/28/26	GOALS	1, 3x, last vs. Stetson, 3/28/26
ASSISTS	1, 3x, last vs. Mount St. Mary's, 3/14/26	ASSISTS	1, 3x, last vs. Mount St. Mary's, 3/14/26
POINTS	2, vs. Mount St. Mary's, 3/14/26	POINTS	2, vs. Mount St. Mary's, 3/14/26
SHOTS ON GOAL	1, 7x, last vs. Stetson, 3/28/26	SHOTS ON GOAL	1, 4x, last vs. Stetson, 3/28/26
GROUND BALLS	3, at Temple, 2/21/24	GROUND BALLS	1, 4x, last at Austin Peay, 3/19/26
CAUSED TURNOVERS	1, 4x, last at Lindenwood, 3/21/26	CAUSED TURNOVERS	1, 2x, last at Lindenwood, 3/21/26
DRAW CONTROLS	N/A	DRAW CONTROLS	N/A

CAREER STATS								
YEAR	GP/GS	G	A	PTS	SOG	GB	CT	DC
2024	4/0	1	0	1	3	4	2	0
2025	0/0	0	0	0	0	0	0	0
2026	8/0	3	3	6	4	4	2	0
<b>TOTAL</b>	<b>12/0</b>	<b>4</b>	<b>3</b>	<b>7</b>	<b>7</b>	<b>8</b>	<b>4</b>	<b>0</b>

**#8 JACLYN MARSZAL | A | SR. | CATONSVILLE, MD.**

CAREER-HIGHS		SEASON-HIGHS	
GOALS	5, at Lehigh, 2/9/24	GOALS	4, at Austin Peay, 3/19/26
ASSISTS	6, 2x, last at Lindenwood, 3/21/26	ASSISTS	6, at Lindenwood, 3/21/26
POINTS	9, at William & Mary, 3/30/24	POINTS	8, at Lindenwood, 3/21/26
SHOTS ON GOAL	6, 2x, last vs. Drexel, 3/21/25	SHOTS ON GOAL	5, at Austin Peay, 3/19/26
GROUND BALLS	4, 2x, last at Mount St. Mary's, 2/22/25	GROUND BALLS	3, vs. Stetson, 3/28/26
CAUSED TURNOVERS	1, 8x, last vs. Stetson, 3/28/26	CAUSED TURNOVERS	1, 3x, last vs. Stetson, 3/28/26
DRAW CONTROLS	1, 3x, last at Lindenwood, 3/21/26	DRAW CONTROLS	1, at Lindenwood, 3/21/26

CAREER STATS								
YEAR	GP/GS	G	A	PTS	SOG	GB	CT	DC
2023*	5/0	2	0	2	3	0	0	0
2024	16/15	25	22	47	36	19	4	2
2025	16/8	21	29	50	44	14	1	0
2026	11/10	12	19	31	22	11	3	1
<b>UD</b>	<b>43/33</b>	<b>58</b>	<b>70</b>	<b>128</b>	<b>102</b>	<b>44</b>	<b>8</b>	<b>3</b>
<b>TOTAL</b>	<b>48/33</b>	<b>60</b>	<b>70</b>	<b>130</b>	<b>105</b>	<b>44</b>	<b>8</b>	<b>3</b>

\* at Notre Dame

**#9 KAT BASEGGIO | D | JR. | GUILFORD, CONN.**

CAREER-HIGHS		SEASON-HIGHS	
GOALS	N/A	GOALS	N/A
ASSISTS	N/A	ASSISTS	N/A
POINTS	N/A	POINTS	N/A
SHOTS ON GOAL	N/A	SHOTS ON GOAL	N/A
GROUND BALLS	5, vs. Rutgers, 2/13/26	GROUND BALLS	5, vs. Rutgers, 2/13/26
CAUSED TURNOVERS	4, 2x, last vs. Rutgers, 2/13/26	CAUSED TURNOVERS	4, vs. Rutgers, 2/13/26
DRAW CONTROLS	1, vs. Princeton, 2/26/25	DRAW CONTROLS	N/A

CAREER STATS								
YEAR	GP/GS	G	A	PTS	SOG	GB	CT	DC
2024	16/15	0	0	0	0	14	5	0
2025	16/16	0	0	0	0	29	23	1
2026	11/10	0	0	0	0	21	13	0
<b>TOTAL</b>	<b>43/41</b>	<b>0</b>	<b>0</b>	<b>0</b>	<b>0</b>	<b>64</b>	<b>41</b>	<b>1</b>

**#10 MCKENZIE DIDIO | A | SR. | WESTPORT, CONN.**

CAREER-HIGHS		SEASON-HIGHS	
GOALS	4, vs. Jacksonville, 3/26/26	GOALS	4, vs. Jacksonville, 3/26/26
ASSISTS	1, 2x, last vs. Jacksonville, 3/26/26	ASSISTS	1, 2x, last vs. Jacksonville, 3/26/26
POINTS	5, vs. Jacksonville, 3/26/26	POINTS	5, vs. Jacksonville, 3/26/26
SHOTS ON GOAL	5, vs. Old Dominion, 2/25/23	SHOTS ON GOAL	4, vs. Jacksonville, 3/26/26
GROUND BALLS	1, 6x, last vs. Stetson, 3/28/26	GROUND BALLS	1, 4x, last vs. Stetson, 3/28/26
CAUSED TURNOVERS	N/A	CAUSED TURNOVERS	N/A
DRAW CONTROLS	N/A	DRAW CONTROLS	N/A

CAREER STATS								
YEAR	GP/GS	G	A	PTS	SOG	GB	CT	DC
2023	16/1	10	0	10	23	1	0	0
2024	9/0	5	0	5	8	1	0	0
2025	2/0	0	0	0	0	0	0	0
2026	10/1	15	2	17	20	4	0	0
<b>TOTAL</b>	<b>37/2</b>	<b>30</b>	<b>2</b>	<b>32</b>	<b>51</b>	<b>6</b>	<b>0</b>	<b>0</b>

**#11 JULIA REAGAN | M | SR. | EAST ATLANTIC BEACH, N.Y.**

CAREER-HIGHS		SEASON-HIGHS	
GOALS	N/A	GOALS	N/A
ASSISTS	N/A	ASSISTS	N/A
POINTS	N/A	POINTS	N/A
SHOTS ON GOAL	N/A	SHOTS ON GOAL	N/A
GROUND BALLS	N/A	GROUND BALLS	N/A
CAUSED TURNOVERS	N/A	CAUSED TURNOVERS	N/A
DRAW CONTROLS	N/A	DRAW CONTROLS	N/A
	1, at Denver, 3/13/23		N/A

CAREER STATS								
YEAR	GP/GS	G	A	PTS	SOG	GB	CT	DC
2023	1/0	0	0	0	0	0	0	1
2024	1/0	0	0	0	0	0	0	0
2025	0/0	0	0	0	0	0	0	0
2026	1/1	0	0	0	0	0	0	0
<b>TOTAL</b>	<b>3/1</b>	<b>0</b>	<b>0</b>	<b>0</b>	<b>0</b>	<b>0</b>	<b>0</b>	<b>1</b>

**#12 ERIN HUSSEY | M | FR. | SEVERNA PARK, MD.**

CAREER-HIGHS		SEASON-HIGHS	
GOALS	N/A	GOALS	N/A
ASSISTS	N/A	ASSISTS	N/A
POINTS	N/A	POINTS	N/A
SHOTS ON GOAL	N/A	SHOTS ON GOAL	N/A
GROUND BALLS	N/A	GROUND BALLS	N/A
CAUSED TURNOVERS	N/A	CAUSED TURNOVERS	N/A
DRAW CONTROLS	N/A	DRAW CONTROLS	N/A

CAREER STATS								
YEAR	GP/GS	G	A	PTS	SOG	GB	CT	DC
2026	0/0	0	0	0	0	0	0	0
<b>TOTAL</b>	<b>0/0</b>	<b>0</b>	<b>0</b>	<b>0</b>	<b>0</b>	<b>0</b>	<b>0</b>	<b>0</b>

**#13 MAGGIE CRAYTOR | A | SO. | CHARLOTTESVILLE, VA.**

CAREER-HIGHS		SEASON-HIGHS	
GOALS	3, 2x, last at Lindenwood, 3/21/26	GOALS	3, at Lindenwood, 3/21/26
ASSISTS	2, vs. UMBC, 3/4/26	ASSISTS	2, vs. UMBC, 3/4/26
POINTS	4, at Lindenwood, 3/21/26	POINTS	4, at Lindenwood, 3/21/26
SHOTS ON GOAL	3, 3x, last at Lindenwood, 3/21/26	SHOTS ON GOAL	3, at Lindenwood, 3/21/26
GROUND BALLS	2, at Austin Peay, 3/19/26	GROUND BALLS	2, at Austin Peay, 3/19/26
CAUSED TURNOVERS	1, vs. Temple, 2/7/25	CAUSED TURNOVERS	N/A
DRAW CONTROLS	N/A	DRAW CONTROLS	N/A

CAREER STATS								
YEAR	GP/GS	G	A	PTS	SOG	GB	CT	DC
2025	7/0	5	0	5	10	1	1	0
2026	11/0	6	3	9	7	3	0	0
<b>TOTAL</b>	<b>18/0</b>	<b>11</b>	<b>3</b>	<b>14</b>	<b>17</b>	<b>4</b>	<b>1</b>	<b>0</b>

**#14 SOPHIA MUSCOLINO | A | JR. | BALDWINVILLE, N.Y.**

CAREER-HIGHS	SEASON-HIGHS
GOALS 3, at Lindenwood, 3/21/26	GOALS 3, at Lindenwood, 3/21/26
ASSISTS 5, vs. Mount St. Mary's, 3/14/26	ASSISTS 5, vs. Mount St. Mary's, 3/14/26
POINTS 7, 2x, last at Lindenwood, 3/21/26	POINTS 7, 2x, last at Lindenwood, 3/21/26
SHOTS ON GOAL 5, vs. Stetson, 3/28/26	SHOTS ON GOAL 5, vs. Stetson, 3/28/26
GROUND BALLS 2, 3x, last vs. Stetson, 3/28/26	GROUND BALLS 2, 3x, last vs. Stetson, 3/28/26
CAUSED TURNOVERS N/A	CAUSED TURNOVERS N/A
DRAW CONTROLS N/A	DRAW CONTROLS N/A

CAREER STATS								
YEAR	GP/GS	G	A	PTS	SOG	GB	CT	DC
2024	8/0	2	1	3	2	2	0	0
2025	10/0	2	0	2	4	1	0	0
2026	8/7	12	22	34	21	8	0	0
<b>TOTAL</b>	<b>26/7</b>	<b>16</b>	<b>23</b>	<b>39</b>	<b>27</b>	<b>11</b>	<b>0</b>	<b>0</b>

**#15 MEG MACMURRAY | A | SO. | CHESTER SPRINGS, PA.**

CAREER-HIGHS	SEASON-HIGHS
GOALS 1, at Lindenwood, 3/21/26	GOALS 1, at Lindenwood, 3/21/26
ASSISTS 1, at Austin Peay, 3/19/26	ASSISTS 1, at Austin Peay, 3/19/26
POINTS 1, 2x, last at Lindenwood, 3/21/26	POINTS 1, 2x, last at Lindenwood, 3/21/26
SHOTS ON GOAL 1, at Lindenwood, 3/21/26	SHOTS ON GOAL 1, at Lindenwood, 3/21/26
GROUND BALLS N/A	GROUND BALLS N/A
CAUSED TURNOVERS N/A	CAUSED TURNOVERS N/A
DRAW CONTROLS N/A	DRAW CONTROLS N/A

CAREER STATS								
YEAR	GP/GS	G	A	PTS	SOG	GB	CT	DC
2025 *	0/0	0	0	0	0	0	0	0
2026	4/0	1	1	2	1	0	0	0
<b>UD</b>	<b>4/0</b>	<b>1</b>	<b>1</b>	<b>2</b>	<b>1</b>	<b>0</b>	<b>0</b>	<b>0</b>
<b>TOTAL</b>	<b>4/0</b>	<b>1</b>	<b>1</b>	<b>2</b>	<b>1</b>	<b>0</b>	<b>0</b>	<b>0</b>

\* AT MARYLAND

**#16 CALLIE DRAB | A | SR. | SUFFERN, N.Y.**

CAREER-HIGHS	SEASON-HIGHS
GOALS 3, 2x, last vs. Wagner, 3/1/25	GOALS 2, vs. Navy 2/18/26
ASSISTS 3, at William & Mary, 3/30/24	ASSISTS 2, at Temple, 2/7/26
POINTS 5, at UMBC, 3/5/25	POINTS 3, at Temple, 2/7/26
SHOTS ON GOAL 4, 2x, last vs. Georgetown, 3/8/25	SHOTS ON GOAL 2, 2x, last vs. Navy 2/18/26
GROUND BALLS 3, 2x, last vs. Wagner, 3/1/25	GROUND BALLS 2, at Austin Peay, 3/19/26
CAUSED TURNOVERS 1, 4x, last vs. Wagner, 3/1/25	CAUSED TURNOVERS N/A
DRAW CONTROLS N/A	DRAW CONTROLS N/A

CAREER STATS								
YEAR	GP/GS	G	A	PTS	SOG	GB	CT	DC
2023	3/0	1	0	1	2	0	0	0
2024	16/0	13	9	22	17	7	2	0
2025	16/8	13	11	24	23	7	2	0
2026	11/3	7	6	13	9	7	0	0
<b>TOTAL</b>	<b>46/11</b>	<b>34</b>	<b>26</b>	<b>60</b>	<b>51</b>	<b>21</b>	<b>4</b>	<b>0</b>

**#17 MORGAN GORE | M | SR. | CROFTON, MD.**

CAREER-HIGHS	SEASON-HIGHS
GOALS 4, 2x, last at Austin Peay, 3/19/26	GOALS 4, at Austin Peay, 3/19/26
ASSISTS 1, 11x, last vs. Stetson, 3/28/26	ASSISTS 1, 4x, last vs. Stetson, 3/28/26
POINTS 5, 2x, last at Austin Peay, 3/19/26	POINTS 5, at Austin Peay, 3/19/26
SHOTS ON GOAL 6, vs. UMBC, 3/4/26	SHOTS ON GOAL 6, vs. UMBC, 3/4/26
GROUND BALLS 4, at Monmouth, 3/30/25	GROUND BALLS 1, 4x, last vs. Stetson, 3/28/26
CAUSED TURNOVERS 2, 7x, last vs. Stetson, 3/28/26	CAUSED TURNOVERS 2, 2x, last vs. Stetson, 3/28/26
DRAW CONTROLS 5, at Temple, 2/7/26	DRAW CONTROLS 5, at Temple, 2/7/26

CAREER STATS								
YEAR	GP/GS	G	A	PTS	SOG	GB	CT	DC
2023	16/1	15	4	19	19	11	2	9
2024	16/15	17	1	18	29	8	5	14
2025	16/15	30	2	32	43	20	10	15
2026	10/10	18	4	22	27	4	6	11
<b>TOTAL</b>	<b>58/41</b>	<b>80</b>	<b>11</b>	<b>91</b>	<b>118</b>	<b>43</b>	<b>23</b>	<b>49</b>

## #18 LENA STOLARICK | D | SO. | HADDONFIELD, N.J.

CAREER-HIGHS		SEASON-HIGHS	
GOALS	N/A	GOALS	N/A
ASSISTS	N/A	ASSISTS	N/A
POINTS	N/A	POINTS	N/A
SHOTS ON GOAL	N/A	SHOTS ON GOAL	N/A
GROUND BALLS	4, vs. Princeton, 2/26/25	GROUND BALLS	3, vs. Stetson, 3/28/26
CAUSED TURNOVERS	3, vs. Princeton, 2/26/25	CAUSED TURNOVERS	2, at Drexel, 3/11/26
DRAW CONTROLS	2, at Towson, 4/13/25	DRAW CONTROLS	1, 3x, last vs. Stetson, 3/28/26

CAREER STATS								
YEAR	GP/GS	G	A	PTS	SOG	GB	CT	DC
2025	13/4	0	0	0	0	10	8	3
2026	11/10	0	0	0	0	13	6	3
<b>TOTAL</b>	<b>24/14</b>	<b>0</b>	<b>0</b>	<b>0</b>	<b>0</b>	<b>23</b>	<b>14</b>	<b>6</b>

## #19 MAGGIE PORTER | A | FR. | STEVENSON, MD.

CAREER-HIGHS		SEASON-HIGHS	
GOALS	2, at Lindenwood, 3/21/26	GOALS	2, at Lindenwood, 3/21/26
ASSISTS	1, 3x, last at Georgetown, 3/7/26	ASSISTS	1, 3x, last at Georgetown, 3/7/26
POINTS	2, 2x, last at Lindenwood, 3/21/26	POINTS	2, 2x, last at Lindenwood, 3/21/26
SHOTS ON GOAL	3, vs. Rutgers, 2/13/26	SHOTS ON GOAL	3, vs. Rutgers, 2/13/26
GROUND BALLS	2, vs. Stetson, 3/28/26	GROUND BALLS	2, vs. Stetson, 3/28/26
CAUSED TURNOVERS	2, vs. Mount St. Mary's, 3/14/26	CAUSED TURNOVERS	2, vs. Mount St. Mary's, 3/14/26
DRAW CONTROLS	N/A	DRAW CONTROLS	N/A

CAREER STATS								
YEAR	GP/GS	G	A	PTS	SOG	GB	CT	DC
2026	11/2	9	3	12	16	4	4	0
<b>TOTAL</b>	<b>11/2</b>	<b>9</b>	<b>3</b>	<b>12</b>	<b>16</b>	<b>4</b>	<b>4</b>	<b>0</b>

## #20 SAM PARADISE | M | JR. | PERRY HALL, MD.

CAREER-HIGHS		SEASON-HIGHS	
GOALS	4, vs. Georgetown, 3/8/25	GOALS	N/A
ASSISTS	2, vs. Temple, 2/7/25	ASSISTS	N/A
POINTS	4, vs. Georgetown, 3/8/25	POINTS	N/A
SHOTS ON GOAL	4, 3x, last vs. Georgetown, 3/8/25	SHOTS ON GOAL	N/A
GROUND BALLS	2, vs. Georgetown, 3/8/25	GROUND BALLS	N/A
CAUSED TURNOVERS	2, 2x, last vs. Georgetown, 3/8/25	CAUSED TURNOVERS	N/A
DRAW CONTROLS	9, vs. Temple, 2/7/25	DRAW CONTROLS	N/A

CAREER STATS								
YEAR	GP/GS	G	A	PTS	SOG	GB	CT	DC
2024	16/3	8	0	8	13	6	4	11
2025	9/9	12	2	14	21	5	4	29
2026	0/0	0	0	0	0	0	0	0
<b>TOTAL</b>	<b>25/12</b>	<b>20</b>	<b>2</b>	<b>22</b>	<b>34</b>	<b>11</b>	<b>8</b>	<b>40</b>

## #21 KATE MERCER | D | SR. | KATONAH, N.Y.

CAREER-HIGHS		SEASON-HIGHS	
GOALS	N/A	GOALS	N/A
ASSISTS	N/A	ASSISTS	N/A
POINTS	N/A	POINTS	N/A
SHOTS ON GOAL	N/A	SHOTS ON GOAL	N/A
GROUND BALLS	N/A	GROUND BALLS	N/A
CAUSED TURNOVERS	N/A	CAUSED TURNOVERS	N/A
DRAW CONTROLS	3, 2x, last vs. Georgetown, 3/8/25	DRAW CONTROLS	N/A

CAREER STATS								
YEAR	GP/GS	G	A	PTS	SOG	GB	CT	DC
2023	2/0	0	0	0	0	0	0	0
2024	4/0	0	0	0	0	0	0	0
2025	7/0	0	0	0	0	0	0	8
2026	5/1	0	0	0	0	0	0	0
<b>TOTAL</b>	<b>18/1</b>	<b>0</b>	<b>0</b>	<b>0</b>	<b>0</b>	<b>0</b>	<b>0</b>	<b>8</b>

**#22 MARY MATEY | D | JR. | PHOENIXVILLE, PA.**

CAREER-HIGHS		SEASON-HIGHS	
GOALS	N/A	GOALS	N/A
ASSISTS	N/A	ASSISTS	N/A
POINTS	N/A	POINTS	N/A
SHOTS ON GOAL	N/A	SHOTS ON GOAL	N/A
GROUND BALLS	3, at Lindenwood, 3/21/26	GROUND BALLS	3, at Lindenwood, 3/21/26
CAUSED TURNOVERS	1, 4x, last vs. Stetson, 3/28/26	CAUSED TURNOVERS	1, 3x, last vs. Stetson, 3/28/26
DRAW CONTROLS	5, vs. Jacksonville, 3/26/26	DRAW CONTROLS	5, vs. Jacksonville, 3/26/26

CAREER STATS								
YEAR	GP/GS	G	A	PTS	SOG	GB	CT	DC
2024	0/0	0	0	0	0	0	0	0
2025	7/1	0	0	0	0	0	1	0
2026	11/10	0	0	0	0	10	3	17
<b>TOTAL</b>	<b>18/11</b>	<b>0</b>	<b>0</b>	<b>0</b>	<b>0</b>	<b>10</b>	<b>4</b>	<b>17</b>

**#23 LULU RISHKO | M | SO. | REHOBOTH BEACH, DEL.**

CAREER-HIGHS		SEASON-HIGHS	
GOALS	2, 5x, last vs. Mount St. Mary's, 3/14/26	GOALS	2, 3x, last vs. Mount St. Mary's, 3/14/26
ASSISTS	1, 5x, last vs. UMBC, 3/4/26	ASSISTS	1, vs. UMBC, 3/4/26
POINTS	3, 2x, last vs. UMBC, 3/4/26	POINTS	3, vs. UMBC, 3/4/26
SHOTS ON GOAL	4, 2x, last vs. Mount St. Mary's, 3/14/26	SHOTS ON GOAL	4, 2x, last vs. Mount St. Mary's, 3/14/26
GROUND BALLS	4, at Monmouth, 3/30/25	GROUND BALLS	2, 3x, last at Drexel, 3/11/26
CAUSED TURNOVERS	2, 2x, last vs. Rutgers, 2/13/26	CAUSED TURNOVERS	2, vs. Rutgers, 2/13/26
DRAW CONTROLS	1, 6x, last vs. Jacksonville, 3/26/26	DRAW CONTROLS	1, 6x, last vs. Jacksonville, 3/26/26

CAREER STATS								
YEAR	GP/GS	G	A	PTS	SOG	GB	CT	DC
2025	14/0	7	4	11	10	13	7	0
2026	11/8	9	2	11	20	9	6	6
<b>TOTAL</b>	<b>25/8</b>	<b>16</b>	<b>6</b>	<b>22</b>	<b>30</b>	<b>22</b>	<b>13</b>	<b>6</b>

**#24 KYLIE O'BRIEN | D | SO. | BERWYN, PA.**

CAREER-HIGHS		SEASON-HIGHS	
GOALS	N/A	GOALS	N/A
ASSISTS	N/A	ASSISTS	N/A
POINTS	N/A	POINTS	N/A
SHOTS ON GOAL	N/A	SHOTS ON GOAL	N/A
GROUND BALLS	N/A	GROUND BALLS	N/A
CAUSED TURNOVERS	N/A	CAUSED TURNOVERS	N/A
DRAW CONTROLS	N/A	DRAW CONTROLS	N/A

CAREER STATS								
YEAR	GP/GS	G	A	PTS	SOG	GB	CT	DC
2025	0/0	0	0	0	0	0	0	0
2026	0/0	0	0	0	0	0	0	0
<b>TOTAL</b>	<b>0/0</b>	<b>0</b>	<b>0</b>	<b>0</b>	<b>0</b>	<b>0</b>	<b>0</b>	<b>0</b>

**#25 AMANDA GAZELLE | M | FR. | ODENTON, MD.**

CAREER-HIGHS		SEASON-HIGHS	
GOALS	N/A	GOALS	N/A
ASSISTS	N/A	ASSISTS	N/A
POINTS	N/A	POINTS	N/A
SHOTS ON GOAL	N/A	SHOTS ON GOAL	N/A
GROUND BALLS	N/A	GROUND BALLS	N/A
CAUSED TURNOVERS	N/A	CAUSED TURNOVERS	N/A
DRAW CONTROLS	N/A	DRAW CONTROLS	N/A

CAREER STATS								
YEAR	GP/GS	G	A	PTS	SOG	GB	CT	DC
2026	0/0	0	0	0	0	0	0	0
<b>TOTAL</b>	<b>0/0</b>	<b>0</b>	<b>0</b>	<b>0</b>	<b>0</b>	<b>0</b>	<b>0</b>	<b>0</b>

**#26 ALISON SWARTOUT | M | SR. | CHARLOTTESVILLE, VA.**

CAREER-HIGHS	SEASON-HIGHS
GOALS _____ 1, vs. Campbell, 4/12/24	GOALS _____ N/A
ASSISTS _____ N/A	ASSISTS _____ N/A
POINTS _____ 1, vs. Campbell, 4/12/24	POINTS _____ N/A
SHOTS ON GOAL _____ 1, 3x, last vs. Campbell, 4/12/24	SHOTS ON GOAL _____ N/A
GROUND BALLS _____ 1, 2x, last vs. Monmouth, 4/27/24	GROUND BALLS _____ N/A
CAUSED TURNOVERS _____ N/A	CAUSED TURNOVERS _____ N/A
DRAW CONTROLS _____ 1, vs. Kent State, 2/25/24	DRAW CONTROLS _____ N/A

CAREER STATS								
YEAR	GP/GS	G	A	PTS	SOG	GB	CT	DC
2023	2/0	0	0	0	0	0	0	0
2024	13/0	1	0	1	3	2	0	1
2025	0/0	0	0	0	0	0	0	0
2026	0/0	0	0	0	0	0	0	0
<b>TOTAL</b>	<b>15/0</b>	<b>1</b>	<b>0</b>	<b>1</b>	<b>3</b>	<b>2</b>	<b>0</b>	<b>1</b>

**#27 MADDY MOBILIA | D | JR. | NEW ROCHELLE, N.Y.**

CAREER-HIGHS	SEASON-HIGHS
GOALS _____ N/A	GOALS _____ N/A
ASSISTS _____ N/A	ASSISTS _____ N/A
POINTS _____ N/A	POINTS _____ N/A
SHOTS ON GOAL _____ N/A	SHOTS ON GOAL _____ N/A
GROUND BALLS _____ 4, 2x, last vs. Georgetown, 3/8/25	GROUND BALLS _____ N/A
CAUSED TURNOVERS _____ 3, vs. Temple, 2/7/25	CAUSED TURNOVERS _____ N/A
DRAW CONTROLS _____ 2, vs. Georgetown, 3/8/25	DRAW CONTROLS _____ N/A

CAREER STATS								
YEAR	GP/GS	G	A	PTS	SOG	GB	CT	DC
2024	16/15	0	0	0	0	12	8	2
2025	16/16	0	0	0	0	16	16	5
2026	0/0	0	0	0	0	0	0	0
<b>TOTAL</b>	<b>32/31</b>	<b>0</b>	<b>0</b>	<b>0</b>	<b>0</b>	<b>28</b>	<b>24</b>	<b>7</b>

**#28 MAGGIE FARRAGHER | D | SR. | EVANSTON, ILL.**

CAREER-HIGHS	SEASON-HIGHS
GOALS _____ N/A	GOALS _____ N/A
ASSISTS _____ N/A	ASSISTS _____ N/A
POINTS _____ N/A	POINTS _____ N/A
SHOTS ON GOAL _____ N/A	SHOTS ON GOAL _____ N/A
GROUND BALLS _____ 3, 4x, last vs. UMBC, 3/4/26	GROUND BALLS _____ 3, vs. UMBC, 3/4/26
CAUSED TURNOVERS _____ 4, vs. Rutgers, 2/13/26	CAUSED TURNOVERS _____ 4, vs. Rutgers, 2/13/26
DRAW CONTROLS _____ 4, vs. Lafayette, 2/15/23	DRAW CONTROLS _____ 1, vs. Navy 2/18/26

CAREER STATS								
YEAR	GP/GS	G	A	PTS	SOG	GB	CT	DC
2023	11/1	0	0	0	0	0	1	12
2024	16/15	0	0	0	0	12	13	3
2025	15/15	0	0	0	0	20	13	0
2026	11/11	0	0	0	0	13	11	1
<b>TOTAL</b>	<b>53/42</b>	<b>0</b>	<b>0</b>	<b>0</b>	<b>0</b>	<b>45</b>	<b>38</b>	<b>16</b>

**#29 KENNEDY RADZIUL | D | SO. | NORTHPORT, N.Y.**

CAREER-HIGHS	SEASON-HIGHS
GOALS _____ N/A	GOALS _____ N/A
ASSISTS _____ 1, at Lindenwood, 3/21/26	ASSISTS _____ 1, at Lindenwood, 3/21/26
POINTS _____ 1, at Lindenwood, 3/21/26	POINTS _____ 1, at Lindenwood, 3/21/26
SHOTS ON GOAL _____ N/A	SHOTS ON GOAL _____ N/A
GROUND BALLS _____ 4, 4x, last at Drexel, 3/11/26	GROUND BALLS _____ 4, 3x, last at Drexel, 3/11/26
CAUSED TURNOVERS _____ 5, at Drexel, 3/11/26	CAUSED TURNOVERS _____ 5, at Drexel, 3/11/26
DRAW CONTROLS _____ 1, vs. Wagner, 3/1/25	DRAW CONTROLS _____ N/A

CAREER STATS								
YEAR	GP/GS	G	A	PTS	SOG	GB	CT	DC
2025	15/11	0	0	0	0	20	12	1
2026	11/10	0	1	1	0	24	19	0
<b>TOTAL</b>	<b>26/21</b>	<b>0</b>	<b>1</b>	<b>1</b>	<b>0</b>	<b>44</b>	<b>31</b>	<b>1</b>

**#30 MARINA MERSCH | GK | FR. | MEDIA, PA.**

CAREER-HIGHS		SEASON-HIGHS	
FEWEST GOALS ALLOWED <sup>^</sup>	N/A	FEWEST GOALS ALLOWED <sup>^</sup>	N/A
SAVES	N/A	SAVES	N/A
SHOTS FACED	N/A	SHOTS FACED	N/A
SAVE PERCENTAGE <sup>^</sup>	N/A	SAVE PERCENTAGE <sup>^</sup>	N/A

^ MIN. 30 MINUTES PLAYED

CAREER STATS							
YEAR	GP/GS	W-L	GA	GAA	SV	SF	SV%
2026	0/0	0-0	0	0.00	0	0	.000
<b>TOTAL</b>	<b>0/0</b>	<b>0-0</b>	<b>0</b>	<b>0.00</b>	<b>0</b>	<b>0</b>	<b>.000</b>

**#31 MADDIE GEORGE | GK | SO. | CENTREVILLE, MD.**

CAREER-HIGHS		SEASON-HIGHS	
FEWEST GOALS ALLOWED <sup>^</sup>	N/A	FEWEST GOALS ALLOWED <sup>^</sup>	N/A
SAVES	N/A	SAVES	N/A
SHOTS FACED	N/A	SHOTS FACED	N/A
SAVE PERCENTAGE <sup>^</sup>	N/A	SAVE PERCENTAGE <sup>^</sup>	N/A

^ MIN. 30 MINUTES PLAYED

CAREER STATS							
YEAR	GP/GS	W-L	GA	GAA	SV	SF	SV%
2025	0/0	0-0	0	0.00	0	0	.000
2026	0/0	0-0	0	0.00	0	0	.000
<b>TOTAL</b>	<b>0/0</b>	<b>0-0</b>	<b>0</b>	<b>0.00</b>	<b>0</b>	<b>0</b>	<b>.000</b>

**#32 ELLA RISHKO | A | SR. | REHOBOTH BEACH, DEL.**

CAREER-HIGHS		SEASON-HIGHS	
GOALS	7, 2x, last vs. Pittsburgh, 4/23/23	GOALS	6, vs. Stetson, 3/28/26
ASSISTS	4, vs. Mount St. Mary's, 3/14/26	ASSISTS	4, vs. Mount St. Mary's, 3/14/26
POINTS	8, 2x, last vs. Mount St. Mary's, 3/14/26	POINTS	8, vs. Mount St. Mary's, 3/14/26
SHOTS ON GOAL	9, vs. Louisville, 4/8/23	SHOTS ON GOAL	7, vs. Stetson, 3/28/26
GROUND BALLS	4, vs. Pittsburgh, 4/23/23	GROUND BALLS	3, at Temple, 2/7/26
CAUSED TURNOVERS	4, 3x, last vs. Stetson, 3/28/26	CAUSED TURNOVERS	4, 2x, last vs. Stetson, 3/28/26
DRAW CONTROLS	15, at Towson, 4/13/25	DRAW CONTROLS	9, 4x, last vs. Stetson, 3/28/26

CAREER STATS								
YEAR	GP/GS	G	A	PTS	SOG	GB	CT	DC
2023 *	18/16	44	6	50	68	18	12	22
2024 *	14/8	17	8	25	34	14	7	16
2025	16/16	36	9	45	65	16	14	55
2026	11/11	32	9	49	40	14	19	61
<b>UD</b>	<b>27/27</b>	<b>68</b>	<b>18</b>	<b>94</b>	<b>105</b>	<b>30</b>	<b>33</b>	<b>116</b>
<b>TOTAL</b>	<b>59/51</b>	<b>129</b>	<b>32</b>	<b>161</b>	<b>207</b>	<b>62</b>	<b>52</b>	<b>154</b>

\* AT VIRGINIA TECH

**#33 SYDNEY O'DONNELL | M | SO. | DOWNINGTOWN, PA.**

CAREER-HIGHS		SEASON-HIGHS	
GOALS	2, at Lindenwood, 3/21/26	GOALS	2, at Lindenwood, 3/21/26
ASSISTS	1, at Drexel, 3/11/26	ASSISTS	1, at Drexel, 3/11/26
POINTS	2, 2x, last at Lindenwood, 3/21/26	POINTS	2, 2x, last at Lindenwood, 3/21/26
SHOTS ON GOAL	2, 2x, last at Lindenwood, 3/21/26	SHOTS ON GOAL	2, 2x, last at Lindenwood, 3/21/26
GROUND BALLS	1, 4x, last at Austin Peay, 3/19/26	GROUND BALLS	1, 4x, last at Austin Peay, 3/19/26
CAUSED TURNOVERS	3, vs. Rutgers, 2/13/26	CAUSED TURNOVERS	3, vs. Rutgers, 2/13/26
DRAW CONTROLS	N/A	DRAW CONTROLS	N/A

CAREER STATS								
YEAR	GP/GS	G	A	PTS	SOG	GB	CT	DC
2025	0/0	0	0	0	0	0	0	0
2026	11/0	5	1	6	7	4	4	0
<b>TOTAL</b>	<b>11/0</b>	<b>5</b>	<b>1</b>	<b>6</b>	<b>7</b>	<b>4</b>	<b>4</b>	<b>0</b>

**#34 RILEY STURTEVANT | M | SR. | SPRINGFIELD, VA.**

CAREER-HIGHS	SEASON-HIGHS
GOALS 3, 2x, last at Lindenwood, 3/21/26	GOALS 3, 2x, last at Lindenwood, 3/21/26
ASSISTS 2, 2x, last at Lindenwood, 3/21/26	ASSISTS 2, 2x, last at Lindenwood, 3/21/26
POINTS 5, at Lindenwood, 3/21/26	POINTS 5, at Lindenwood, 3/21/26
SHOTS ON GOAL 4, 2x, last vs. Stetson, 3/28/26	SHOTS ON GOAL 4, 2x, last vs. Stetson, 3/28/26
GROUND BALLS 3, 2x, last at Drexel, 3/11/26	GROUND BALLS 3, at Drexel, 3/11/26
CAUSED TURNOVERS 2, 2x, last vs. Mount St. Mary's, 3/14/26	CAUSED TURNOVERS 2, 2x, last vs. Mount St. Mary's, 3/14/26
DRAW CONTROLS N/A	DRAW CONTROLS N/A

CAREER STATS								
YEAR	GP/GS	G	A	PTS	SOG	GB	CT	DC
2023	0/0	0	0	0	0	0	0	0
2024	8/0	2	0	2	4	2	0	0
2025	16/9	13	2	15	19	11	6	0
2026	11/4	15	5	20	23	8	10	0
<b>TOTAL</b>	<b>35/13</b>	<b>30</b>	<b>7</b>	<b>37</b>	<b>46</b>	<b>21</b>	<b>16</b>	<b>0</b>

**#35 NICHELLE DESBORDES | D | SO. | ELLICOTT CITY, MD.**

CAREER-HIGHS	SEASON-HIGHS
GOALS N/A	GOALS N/A
ASSISTS N/A	ASSISTS N/A
POINTS N/A	POINTS N/A
SHOTS ON GOAL N/A	SHOTS ON GOAL N/A
GROUND BALLS N/A	GROUND BALLS N/A
CAUSED TURNOVERS N/A	CAUSED TURNOVERS N/A
DRAW CONTROLS N/A	DRAW CONTROLS N/A

CAREER STATS								
YEAR	GP/GS	G	A	PTS	SOG	GB	CT	DC
2025	0/0	0	0	0	0	0	0	0
2026	0/0	0	0	0	0	0	0	0
<b>TOTAL</b>	<b>0/0</b>	<b>0</b>	<b>0</b>	<b>0</b>	<b>0</b>	<b>0</b>	<b>0</b>	<b>0</b>

**#37 MIA DIDIO | D | SR. | WESTPORT, CONN.**

CAREER-HIGHS	SEASON-HIGHS
GOALS N/A	GOALS N/A
ASSISTS N/A	ASSISTS N/A
POINTS N/A	POINTS N/A
SHOTS ON GOAL N/A	SHOTS ON GOAL N/A
GROUND BALLS N/A	GROUND BALLS N/A
CAUSED TURNOVERS N/A	CAUSED TURNOVERS N/A
DRAW CONTROLS N/A	DRAW CONTROLS N/A

CAREER STATS								
YEAR	GP/GS	G	A	PTS	SOG	GB	CT	DC
2023	1/0	0	0	0	0	0	0	0
2024	0/0	0	0	0	0	0	0	0
2025	0/0	0	0	0	0	0	0	0
2026	2/1	0	0	0	0	0	0	0
<b>TOTAL</b>	<b>3/1</b>	<b>0</b>	<b>0</b>	<b>0</b>	<b>0</b>	<b>0</b>	<b>0</b>	<b>0</b>

**#38 SADIE SCHULTZ | M | FR. | RIVERHEAD, N.Y.**

CAREER-HIGHS	SEASON-HIGHS
GOALS N/A	GOALS N/A
ASSISTS N/A	ASSISTS N/A
POINTS N/A	POINTS N/A
SHOTS ON GOAL N/A	SHOTS ON GOAL N/A
GROUND BALLS N/A	GROUND BALLS N/A
CAUSED TURNOVERS N/A	CAUSED TURNOVERS N/A
DRAW CONTROLS N/A	DRAW CONTROLS N/A

CAREER STATS								
YEAR	GP/GS	G	A	PTS	SOG	GB	CT	DC
2026	0/0	0	0	0	0	0	0	0
<b>TOTAL</b>	<b>0/0</b>	<b>0</b>	<b>0</b>	<b>0</b>	<b>0</b>	<b>0</b>	<b>0</b>	<b>0</b>

**#40 STEPH MARSZAL | GK | SR. | CATONSVILLE, MD.**

CAREER-HIGHS	
FEWEST GOALS ALLOWED <sup>^</sup>	1, vs. Lafayette, 3/6/24
SAVES	14, at Lehigh, 2/9/24
SHOTS FACED	35 vs. Princeton, 2/26/25
SAVE PERCENTAGE <sup>^</sup>	.667, 4x, last at Wagner, 3/9/24

SEASON-HIGHS	
FEWEST GOALS ALLOWED <sup>^</sup>	3, at Austin Peay, 3/19/26
SAVES	10, 3x, last at Georgetown, 3/7/26
SHOTS FACED	30, vs. Navy, 2/18/26
SAVE PERCENTAGE <sup>^</sup>	.615, vs. Mount St. Mary's, 3/14/26

^ MIN. 30 MINUTES PLAYED

CAREER STATS							
YEAR	GP/GS	W-L	GA	GAA	SV	SF	SV%
2023	0/0	0-0	0	0.00	0	0	.000
2024	13/12	7-5	97	10.12	93	253	.489
2025	14/13	8-5	154	11.65	106	363	.408
2026	11/11	7-4	96	8.73	70	216	.422
<b>TOTAL</b>	<b>38/36</b>	<b>22-14</b>	<b>347</b>	<b>10.26</b>	<b>269</b>	<b>832</b>	<b>.437</b>

**#41 MOLLY BAUMGRATZ | M | JR. | CHARLOTTE, N.C.**

CAREER-HIGHS	
GOALS	N/A
ASSISTS	N/A
POINTS	N/A
SHOTS ON GOAL	N/A
GROUND BALLS	N/A
CAUSED TURNOVERS	1, 3x, last vs. Jacksonville, 3/26/26
DRAW CONTROLS	9, vs. Mount St. Mary's, 3/14/26

SEASON-HIGHS	
GOALS	N/A
ASSISTS	N/A
POINTS	N/A
SHOTS ON GOAL	N/A
GROUND BALLS	N/A
CAUSED TURNOVERS	1, 3x, last vs. Jacksonville, 3/26/26
DRAW CONTROLS	9, vs. Mount St. Mary's, 3/14/26

CAREER STATS								
YEAR	GP/GS	G	A	PTS	SOG	GB	CT	DC
2024	0/0	0	0	0	0	0	0	0
2025	12/5	0	0	0	0	0	0	14
2026	11/10	0	0	0	0	0	3	41
<b>TOTAL</b>	<b>23/15</b>	<b>0</b>	<b>0</b>	<b>0</b>	<b>0</b>	<b>0</b>	<b>3</b>	<b>55</b>

**#42 ELLIE DASSOULAS | A | SR. | TOWSON, MD.**

CAREER-HIGHS	
GOALS	N/A
ASSISTS	N/A
POINTS	N/A
SHOTS ON GOAL	N/A
GROUND BALLS	N/A
CAUSED TURNOVERS	N/A
DRAW CONTROLS	N/A

SEASON-HIGHS	
GOALS	N/A
ASSISTS	N/A
POINTS	N/A
SHOTS ON GOAL	N/A
GROUND BALLS	N/A
CAUSED TURNOVERS	N/A
DRAW CONTROLS	N/A

CAREER STATS								
YEAR	GP/GS	G	A	PTS	SOG	GB	CT	DC
2023	0/0	0	0	0	0	0	0	0
2024	0/0	0	0	0	0	0	0	0
2025	0/0	0	0	0	0	0	0	0
2026	1/1	0	0	0	0	0	0	0
<b>TOTAL</b>	<b>1/1</b>	<b>0</b>	<b>0</b>	<b>0</b>	<b>0</b>	<b>0</b>	<b>0</b>	<b>0</b>

# DELAWARE TV/RADIO CHART



1

Stella Stolarick  
Sophomore | A  
Haddonfield, N.J.  
Haddonfield Memorial  
@stellastolarick



2

Grayson Buono  
Sophomore | A  
Wayne, Pa.  
Radnor  
@grayson.buono



3

Lara Hoeflich  
Sophomore | D  
Glenelg, Md.  
Glenelg High School  
@lara.hoeflich8



4

Marin Mooney  
Freshman | A  
Villanova, Pa.  
Radnor  
@\_marinmooney



6

Jenny Green  
Freshman | D  
Garnet Valley, Pa.  
Garnet Valley  
@jenny\_green



7

Julia Ciuffo  
Junior | M  
Reisterstown, Md.  
Roland Park Country  
@juliaciuffo



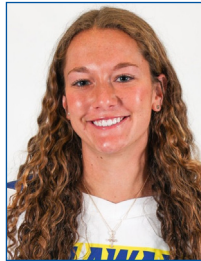
8

Jaclyn Marszal  
Senior | A  
Catonsville, Md.  
Glenelg Country School (Notre Dame)  
@jaclynmarszal



9

Kat Baseggio  
Junior | D  
Guilford, Conn.  
Guilford  
@katbaseggio



10

McKenzie Didio  
Senior | A  
Westport, Conn.  
Staples  
@mckenzieididio



11

Julia Reagan  
Senior | M  
East Atlantic Beach, N.Y.  
Sacred Heart Academy  
@juliareagann



12

Erin Hussy  
Freshman | M  
Severna Park, Md.  
Severna Park  
@erin\_huss7



13

Maggie Craytor  
Sophomore | A  
Charlottesville, Va.  
Western Albemarle  
@maggiecraytor



14

Sophia Muscolino  
Junior | A  
Baldwinsville, N.Y.  
Charles W. Baker  
@sophia.muscolino



15

Meg MacMurray  
Sophomore | A  
Chester Springs, Pa.  
The Hill School (Maryland)  
@megmacmurray



16

Callie Drab  
Senior | A  
Suffern, N.Y.  
Suffern  
@calliedrab



17

Morgan Gore  
Senior | M  
Crofton, Md.  
Arundel  
@morgangore



18

Lena Stolarick  
Sophomore | D  
Haddonfield, N.J.  
Haddonfield Memorial  
@lena\_stolarick



19

Maggie Porter  
Freshman | A  
Stevenson, Md.  
St. Paul's School for Girls (Penn State)  
@maggieporterr



20

Sam Paradise  
Junior | M  
Perry Hall, Md.  
Maryvale Preparatory  
@sparadise10



21

Kate Mercer  
Senior | D  
Katonah, N.Y.  
John Jay  
@kat Mercer



22

Mary Matey  
Junior | D  
Phoenixville, Pa.  
Archbishop John Carroll  
@marymatey



23

Lulu Rishko  
Sophomore | M  
Rehoboth Beach, Del.  
Cape Henlopen  
@lulurishko



24

Kylie O'Brien  
Sophomore | D  
Berwyn, Pa.  
Academy of Notre Dame  
@kylieobrien\_



25

Amanda Gazelle  
Freshman | M  
Odenton, Md.  
Archbishop Spalding  
@amandagazelle15

# DELAWARE TV/RADIO CHART



**26**  
Alison Swartout  
Senior | M  
Charlottesville, Va.  
Monticello  
@alison.swartout



**27**  
Maddy Mobilia  
Junior | D  
New Rochelle, N.Y.  
The Ursuline School  
@madelinemobilia



**28**  
Maggie Farragher  
Senior | D  
Evanston, Ill.  
Evanston Township  
@maggiefarragher



**29**  
Kennedy Radziul  
Sophomore | D  
Northport, N.Y.  
Northport  
@kennedyradziul



**30**  
Marina Mersch  
Freshman | GK  
Media, Pa.  
Cardinal O'Hara  
@marina.mersch18



**31**  
Maddie George  
Sophomore | GK  
Centreville, Md.  
Queen Anne's County  
@maddie.a.george



**32**  
Ella Rishko  
Senior | A  
Rehoboth Beach, Del.  
Cape Henlopen (Virginia Tech)  
@ella.rishko



**33**  
Sydney O'Donnell  
Sophomore | M  
Downingtown, Pa.  
Downingtown West  
@sydneyodonnell33



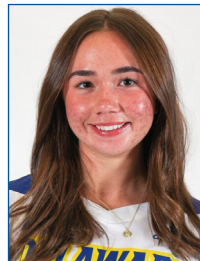
**34**  
Riley Sturtevant  
Senior | M  
Springfield, Va.  
West Springfield  
@riley\_sturtevant



**35**  
Nichelle Desbordes  
Sophomore | D  
Ellicott City, Md.  
Glenelg Country School  
@nichelle.des11



**37**  
Mia Didio  
Senior | D  
Westport, Conn.  
Staples  
@mia.didio11



**38**  
Sadie Schultz  
Freshman | M  
Riverhead, N.Y.  
Riverhead  
@sadieschultz\_



**40**  
Steph Marszal  
Senior | GK  
Catonsville, Md.  
Glenelg Country School  
@stephmarszal



**41**  
Molly Baumgratz  
Junior | M  
Charlotte, N.C.  
Charlotte Catholic  
@mollybaumgratz



**42**  
Ellie Dassoulas  
Senior | A  
Towson, Md.  
Roland Park Country  
@elliedassoulas



**Head Coach**  
Amy Altig  
7th season



**Assoc. Head Coach**  
Kara Nakrasius  
4th season



**Assoc. Head Coach**  
Sam Pratt  
2nd season



**Assistant Coach**  
Lilly Siskind  
2nd season