



DELAWARE FIGHTIN' BLUE HENS

WOMEN'S LACROSSE GAME NOTES

a new era.



SERIES HISTORY vs. JACKSONVILLE

All Time	n/a
Altig vs.	n/a
Streak	n/a
At Home	n/a
On the Road	n/a
Neutral	n/a
Last Win	n/a
Last Loss	n/a

SERIES HISTORY vs. STETSON

All Time	n/a
Altig vs.	n/a
Streak	n/a
At Home	n/a
On the Road	n/a
Neutral	n/a
Last Win	n/a
Last Loss	n/a

HOW TO FOLLOW

Stream..... ESPN+
 X/Instagram..... @DelawareWLAX
 Live Stats..... bluehens.com

WHO ARE WE

Only refer to our institution as the **University of Delaware** or **UD**. Do not use "U of D," "UofD," "the U of D" or "UDel." Do not use periods in "UD." We are based in Newark (new-ARK), Delaware.

We are the Fightin' Blue Hens on first reference and Blue Hens, Hens, or Blue & Gold after that.

MEDIA RELATIONS

For interview requests for women's lacrosse student-athletes or coaches, please contact Brendan Thomas, Director, Communications & Creative Services.

Email..... brendant@udel.edu
 Cell..... 207-400-2840

DELAWARE (5-4, 2-0 ASUN)



Head Coach: Amy Altig
Record at UD: 41-44 (7th season)
Career Record: same
Last: W, 25-7 at Lindenwood

GM 10

JACKSONVILLE (6-2, 1-0 ASUN)



Head Coach: Tara Singleton
Record at JU: 37-25 (4th season)
Career Record: same
Last: W, 13-8 vs. Queens

thursday, march 26 | noon | newark, del. | delaware stadium (18,077) | espn+

DELAWARE (5-4, 2-0 ASUN)



Head Coach: Amy Altig
Record at UD: 41-44 (7th season)
Career Record: same
Last: W, 25-7 at Lindenwood

GM 11

STETSON (1-8, 1-0 ASUN)



Head Coach: Sue Murphy
Record at SU: 6-19 (2nd season)
Career Record: 157-161 (20th season)
Last: W, 12-11 (OT) vs. Coastal Carolina

saturday, march 28 | noon | newark, del. | delaware stadium (18,077) | espn+

OPENING DRAW

The University of Delaware women's lacrosse team returns to Delaware Stadium to play its first home Atlantic Sun (ASUN) Conference contests. The Fightin' Blue Hens will play a pair of first-time opponents as they take on Jacksonville and Stetson.

Delaware is coming off a dominant road weekend to open its inaugural ASUN season, defeating Austin Peay 19-3 and Lindenwood 25-7. The 44 goals over the two-game stretch are the program's most since 1986. Against Lindenwood, the 25 goals are the most by a UD team since 1987 and is tied for fifth in program history. The 18-goal margin of victory is the largest since 2015. The Blue Hens dished out 17 assists against the Lions, the second-most in the Delaware record books and most in a game since 1990. Overall, 15 different players had a point over the weekend.

Jaclyn Marszal had 14 points over the two games, including two goals and six assists against Lindenwood, all in the second half. **Sophia Muscolino** had 11 points over the weekend, tying a career high with seven points, including her first-career hat trick against the Lions. **Grayson Buono** scored a career-high five goals, her first-career multi-goal performance, against Lindenwood, and **Riley Sturtevant** had five points.

Delaware's defense forced 36 turnovers over the weekend and held opponents to just 63% (17-27) on clear attempts. Austin Peay only recorded seven shot attempts, tying a UD record for an opponent low and the three goals scored is tied for the fewest under head coach **Amy Altig**.

Ella Risko ranks second in the ASUN in goals per game (2.78), sixth in draw controls per game (4.78), and seventh in points per game (3.67). **Sophia Muscolino** leads the conference in points per game (4.50) and assists per game (3.00), while **Jaclyn Marszal** is fourth in assists per game (1.78).

HEN LEADERS



ella risko

goals
25 goals



sophia muscolino

assists
18 assists



ella risko

points
33 points



ella risko

draws
43 draw controls



kennedy radziul

ground balls
21 ground balls



steph marszal

saves
64 saves

2026 SCHEDULE

KEY H A N



feb. 6
Philadelphia, Pa.
L, 12-10



feb. 13
Newark, Del.
L, 12-4



feb. 18
Newark, Del.
L, 15-10



march 4
Newark, Del.
W, 16-8



march 7
Washington, D.C.
L, 9-8



march 11
Philadelphia, Pa.
W, 13-6



march 14
Newark, Del.
W, 17-5



march 19
Clarksville, Tenn.
W, 19-3



march 21
St. Charles, Mo.
W, 25-7



march 26
Newark, Del.
Noon
ESPN-



march 28
Newark, Del.
Noon
ESPN-



april 1
Newark, Del.
4 p.m.
ESPN-



april 9
Newark, Del.
Noon
ESPN-



april 11
Newark, Del.
Noon
ESPN-



april 16
Charlotte, N.C.
Noon
ESPN-



april 22
Lynchburg, Va.
2 p.m.
ESPN-

*all times ET

A NEW ERA

After a nearly 18-month wait, the new era is finally here and the University of Delaware Fightin' Blue Hens are officially full members of Conference USA as of July 1, 2025. Fourteen of UD's 22 varsity programs will be housed in CUSA, with eight others joining as affiliate members in the Atlantic Sun (women's lacrosse, men's and women's swimming & diving), Atlantic 10 (men's lacrosse), Mid-American Conference (rowing), The Summit League (men's soccer), Atlantic Hockey America (ice hockey), and Mountain Pacific Sports Federation (field hockey).

An athletic department built on history and tradition, Delaware brings an abundance of success to CUSA having won 10 national championships, 172 team conference titles, 282 individual conference crowns, 342 major conference awards, 2,655 all-league selections, and 543 all-americans.

UD student-athletes complement their athletic success with strong academic performances. During the 2024-25 academic year, the Blue Hens compiled a cumulative 3.41 grade-point average—the highest in department history, excluding academic terms impacted by COVID-19. This marked the 11th-consecutive year and the 23rd-straight semester in which UD student-athletes have posted a 3.00 GPA or better.

The move will push the Delaware brand across the nation, spanning from the northeast down into Florida, and west as far as New Mexico. However, the reach won't stop there. At least five football games will hit the national scene on CBS Sports Network/ESPN family of networks, including a non-conference tilt on FOX against Colorado. Men's and women's basketball will also have the chance to play nationally televised games as part of CUSA's media rights agreement with CBS Sports Network and ESPN.

Speaking of reach, Delaware's initial announcements about joining Conference USA reached over two billion people according to social media analytics. Put that into perspective – just over one million people live in the state of Delaware. That means these announcements reached over 2,000 Delawares.



CUSA SPONSORED DELAWARE SPORTS		OTHER DELAWARE SPORTS AFFILIATIONS		
- Baseball	- W Soccer	- Field Hockey	MPSF	- W Rowing
- M/W Basketball	- Softball	- Ice Hockey	Atlantic Hockey America	- M Soccer
- W Cross Country/Track & Field	- M/W Tennis	- M Lacrosse	Atlantic 10	- M/W Swim/Dive
- Football	- Volleyball	- W Lacrosse	Atlantic Sun	
- M/W Golf				Mid-American The Summit League Atlantic Sun

QUICK FACTS

School.....	University of Delaware
Location.....	Newark, Del.
Founded	1743
Enrollment	24,039
President	Laura Carlson
School Website.....	www.udel.edu
Nickname	Fightin' Blue Hens
School Colors	Blue & Gold
Athletics Website	www.bluehens.com
Director of Athletics.....	Jordan Skolnick
Conference.....	Atlantic Sun
Website	www.asunsports.org

WOMEN'S LACROSSE PROGRAM

Facility.....	Delaware Stadium
Capacity	18,077
First Season of Women's Lacrosse	1978
All-Time Record	433-357-1
All-Time Delaware Stadium Record.....	66-55
National Championships	3
Conference Championships.....	6
Head Coach	Amy Altig (James Madison '05)
Career Record.....	41-44 / 7th season
Record at UD.....	same
Letterwinners Returning/Lost.....	31/10
Starters Returning/Lost	10/2
Newcomers	8
2025 Overall Record.....	10-6
2025 CAA Record	6-2
2025 CAA Finish.....	3rd
2025 Postseason.....	CAA Semifinals

TABLE OF CONTENTS

A New Era.....	2
Storylines.....	3-6
Program information.....	3
Statistical comparison.....	3
What to look for.....	3
Delaware record when.....	4
Statistical superlatives.....	5
ASUN standings/awards.....	5
Altig record vs. opponents.....	6
Milestone watch.....	6
Roster.....	7
Head coach Amy Altig.....	8
Assistant coaches & support staff.....	9
Atlantic Sun Conference.....	10
University of Delaware	11
Starters & stat leaders	12
Highs & lows.....	13-14
Season stats.....	15
NCAA Rankings.....	16-17
Player Pages	18-27
TV Roster.....	28-29

WHAT TO LOOK FOR...

- Delaware is 5-0 this season, and 24-11 in seven seasons under head coach **Amy Altig** when holding opponents under 85% in clearing attempts.

- The Fightin' Blue Hens have allowed less than 10 goals in each of their last six games entering the weekend, going 5-1 in those games. Since Altig's first season in 2020, UD is 27-3 when holding opponents under 10 goals.

balanced scoring effort

Delaware has had 14 players score a goal in 2026, with five scoring at least 10 goals. Four times, the Blue Hens have had at least 10 different players in the scoring column, with a season-high 12 players scoring a goal at Lindenwood. That is the most since 12 Blue Hens scored in an 18-4 win over Kent State on February 25, 2024.

sensational steph

Steph Marszal has been dominant in the cage this season, leading the ASUN in goals against average (8.56). She is second in minutes played (420) and third in save percentage (.454), while ranking fifth in total saves (64). She set a career high with a .500 save percentage in five-straight games (UMBC - Austin Peay), the longest streak by a last Blue Hen since **Tori Zorovich** during the 2013 season (min. 30 minutes played/game).

kennedy going beast mode

Kennedy Radziul has been a beast in the defensive zone this season, leading the Blue Hens with 21 ground balls and 17 caused turnovers, already surpassing her total caused turnovers from last season. She had a career-high five caused turnovers at Georgetown and has had four ground balls in a game three times this spring.

no goals allowed

The Fightin' Blue Hens have allowed less than 10 goals in each of their last six games entering the weekend, the program's longest streak since UD went six-consecutive games holding opponents under 10 goals was in 2016.

rishko on fire

Ella Rishko recorded a hat trick in six-straight games from February 13 (Navy) through March 19 (Austin Peay). It was the longest streak since **Caitlin McCartney** also did it in six-consecutive games over the 2012-13 seasons. Rishko also had least four points in five-straight games, the longest streak since **Delaney McDaniel** had four or more points in five-straight games between the 2024-25 seasons.

tough sos

Delaware has had the 30th-toughest schedule in the country based on opponents winning percentage. UD's first nine opponents hold an overall record of 47-32 (.595), including a pair of ranked matchups with Navy and Georgetown. It is the toughest schedule in the ASUN, with Queens (45th, .558) the next highest.

welcome back phia

Sophia Muscolino missed the first three games of the season due to injury, but returned to the lineup against UMBC on March 4, making her first-career start. The junior has averaged 4.5 points per game in the six games since her return, including a career-high seven points twice (Mount St. Mary's, Lindenwood). She had a career-high five assists against the Mount and her first-career hat trick at Lindenwood.

kat scoops

In Delaware's home-opener against Rutgers, **Kat Baseggio** had a career-high five ground balls to reach the 50-career ground ball milestone in her 34th-career game. The five ground balls are the most in a game by a Delaware player since March 6, 2024. Baseggio also finished with four caused turnovers, tying a career high.

centurion status achieved

Senior **Jaclyn Marszal** hit personal milestones in each of Delaware's first two games this season. She had two assists in the season opener at Temple to reach 100 career points, then added another assist against Rutgers to achieve 100 points in the Blue & Gold. Marszal had two goals as a freshman at Notre Dame.

ella day in philadelphia

Senior **Ella Rishko** reached a trio of milestones at Temple in the season opener. She had a hat trick to reach 100-career goals scored and recorded nine draw controls to surpass 100 for her career. She also reached 50-career ground balls with three on the day.

200 club

In Delaware's season opener against Temple, **Steph Marszal** became the 17th Blue Hen to reach the 200-career save mark. She is the first UD goalie to reach the mark since **Mercy McCarthy** (2019-23).

filling the tub

Through its first four home games at Delaware Stadium, the Blue Hens lead the ASUN and rank 31st nationally with an average home attendance of 337 fans. The Blue & Gold is the only ASUN program averaging more than 300 fans per game.

STATISTICAL COMPARISON

Category	DEL	NCAA	ASUN	JU	NCAA	ASUN	STET	NCAA	ASUN
Assists Per Game	8.22	15th	1st	7.00	25th	2nd	3.00	116th	8th
Caused TO Per Game	10.22	24th	2nd	7.25	91st	6th	3.22	--	9th
Clearing Percentage	.877	60th	3rd	.916	20th	1st	.755	--	9th
Draw Control Percentage	.536	50th	6th	.657	4th	1st	.348	120th	9th
Draw Controls Per Game	12.56	56th	5th	16.50	9th	1st	9.56	102nd	9th
Free Position Percentage	.452	63rd	5th	.333	120th	9th	.424	85th	7th
Ground Balls Per Game	15.89	48th	3rd	14.63	79th	7th	10.44	--	9th
Save Percentage	.454	33rd	2nd	.449	36th	3rd	.382	96th	7th
Scoring Defense	8.56	20th	1st	9.50	36th	3rd	18.88	--	9th
Scoring Margin	5.00	19th	1st	4.00	23rd	2nd	-11.99	--	9th
Scoring Offense	13.56	27th	1st	13.50	28th	2nd	6.89	120th	9th
Shot Percentage	.462	26th	1st	.460	30th	2nd	.440	45th	3rd
Shots Per Game	29.33	27th	3rd	29.38	35th	2nd	15.67	--	9th
Shots On Goal Per Game	21.00	42nd	3rd	22.50	21st	1st	12.56	--	9th
Turnovers Per Game	13.89	58th	2nd	13.63	47th	1st	14.89	84th	4th

keep the winning coming

Delaware is looking to build off of back-to-back 10-win seasons. It is the first time the program has had consecutive winning seasons since 2016-17 and the first time it has won at least 10 games in consecutive years since 2015-16.

runnin' it back

The Blue Hens return 10-of-12 starters from the 2025 season after the graduation of All-CAA Second Team selections Delaney McDaniel and Erin Gormley. Overall, UD returns 31 players who were on last season's roster, including 21 who saw action in at least one game and 13 who appeared in at least 12 games.

newcomers

The Blue Hens welcome eight newcomers to the roster in 2026. The group includes seven freshmen - **Amanda Gazelle, Jenny Green, Erin Hussey, Marin Mooney, Marina Mersch, Maggie Porter** and **Sadie Schultz** - who will all look to make their collegiate debuts in 2026. Porter transferred to Delaware after spending the fall at Penn State. Additionally, sophomore transfer **Meg MacMurray** joined the Hens after a year at Maryland.

roster breakdown

The 2026 Delaware roster features 39 players hailing from nine different states. Sisters **Ella** and **Lulu Rishko** are the only two Delawareans on the roster, while senior captain **Maggie Farragher** (Illinois) is the farthest from home. Maryland (12), Pennsylvania (8) and New York (7) are the three most represented states.

oh captain, my captains

Delaware will be led by a trio of senior captains in 2026 as **Maggie Farragher, Morgan Gore**, and **Ella Rishko** were all selected to lead the squad. Farragher and Gore are both second-time selections after serving as captains in 2025, while Rishko is a first-time captain in her second season as a Blue Hen following her transfer from Virginia Tech.

asun a good fit

While 2026 will be the Blue Hens' first season in the ASUN, their 2025 numbers suggest the program will fit right in. Delaware finished 34th in the final 2025 RPI rankings, which would have been at the top of the conference, with Liberty second at 39th. Statistically, Delaware would have ranked first in the conference in free position percentage (.545), second in scoring defense (11.63), and third in caused turnovers per game (11.19), assists per game (6.25) and turnovers per game (14.63).

returning offensive firepower

Delaware returns three of its top-five scorers. **Jaelyn Marszal** ranked second on the team with 50 points (21g, 29a), while **Ella Rishko** had a team-leading 36 goals and 45 points, and **Morgan Gore** (30g, 2a) rounded out the top five. Overall, the Blue Hens bring back 67% of its goal-scoring production from last season

it starts at the draw

The Blue Hens went 7-0 in 2025, and are 30-10 in seven seasons under **Amy Altig** when winning more draws than their opponents. **Ella Rishko** set the program single-game record with 15 draw controls at Towson (April 13).

defensive dawgs

The Blue & Gold ranked eighth in the country in 2025 with 11.19 caused turnovers per game. The Hens bring back starters **Kat Baseggio** (23 CT, 29 GB), **Maggie Farragher** (13 CT, 20 GB), and **Kennedy Radziul** (12 CT, 20 GB). Overall, UD returns 69% of its caused turnover production from 2025.

get the lead, hold the lead

The Blue Hens have been very good in recent years in holding a second-half lead. In 2025, the squad went 10-1 when leading at halftime and 9-0 when having the advantage after three quarters. Similarly, Delaware was 8-0 in 2024 when up at the midway point and 10-0 when leading after three quarters.

magic number is 10

Since **Amy Altig** became head coach prior to the 2020 season, the Blue Hens are 27-3 when holding opponents under 10 goals. On the flipside, Delaware is 39-18 when the offense scores 10 or more goals.

caa postseason honors

Delaware returns three of its five All-CAA selections from a season ago. Senior **Morgan Gore** was an All-CAA Second Team pick in 2025, earning her second-career postseason nod, and sophomores **Lulu Rishko** and **Kennedy Radziul** were both selected to the CAA All-Rookie Team.

puerto rico

Senior twins **McKenzie** and **Mia Didio** both represented Puerto Rico at the 2024 World Lacrosse Women's U20 Championship in Hong Kong, China. Their maternal grandmother is a native of Puerto Rico and the two earned spots on the Puerto Rico U20 National Team.

Puerto Rico finished fifth overall with a 6-2 record, going 3-1 in pool play and winning two consolation playoff games. McKenzie finished sixth on the team in scoring with eight goals and two assists. Mia, unfortunately, missed the tournament due to injury.

altig here for the long haul

In July, Delaware and head coach **Amy Altig** agreed upon a contract extension that will keep her at the helm of the women's lacrosse program through the 2030 season. Altig was named the seventh head coach in program history in June 2019 and has led Delaware to a 36-40 record through her first six seasons, including back-to-back 10-win campaigns in 2023-24. UD won six CAA games in 2025, the program's most league wins since 1999 when the Blue Hens went 6-0 in America East play.

DELAWARE RECORD WHEN...

	2026	ALTIG
Overall	5-4	41-44
Conference	2-0	18-14
Non-conference	3-4	23-30
Home	2-2	22-20
Away	3-2	19-20
Neutral	0-0	0-4
Current streak	W4	W4
Current home streak	W2	W2
Current road streak	W3	W3
Current neutral streak	--	L5
vs. ranked opponent	0-2	1-14
Day game	5-3	39-41
Night game (5 p.m. or later)	0-1	2-3
February	0-3	11-14
March	5-1	19-19
April	0-0	11-8
May	0-0	0-3
Scoring first	4-3	25-20
Opponent scores first	1-1	16-24
Scoring 0-4 goals	0-1	0-7
Scoring 5-9 goals	0-1	2-19
Scoring 10-14 goals	1-2	20-17
Scoring 15-19 goals	3-0	17-1
Scoring 20+ goals	1-0	2-0
Allowing 0-4 goals	1-0	5-0
Allowing 5-9 goals	4-1	22-3
Allowing 10-14 goals	0-2	13-21
Allowing 15-19 goals	0-1	1-17
Allowing 20+ goals	0-0	0-3
Leading after 1st	4-2	23-8
Trailing after 1st	1-2	9-23
Tied after 1st	0-0	7-5
Leading at halftime	5-2	31-6
Trailing at halftime	0-2	7-34
Tied at halftime	0-0	3-4
Leading after 3rd	5-1	32-6
Trailing after 3rd	0-2	3-28
Tied after 3rd	0-1	4-2
Overtime	0-0	1-3
Delaware has more GBs	5-2	29-14
Opponent has more GBs	0-2	10-28
GBs are even	0-0	2-2
Delaware wins more draws	4-2	30-10
Opponent wins more draws	1-2	11-31
Draws are even	0-0	0-3
Delaware clear attempts ≥ 85%	5-1	30-22
Delaware clear attempts < 85%	0-3	11-22
Opponent clear attempts ≥ 85%	0-4	17-33
Opponent clear attempts < 85%	5-0	24-11

ON THIS DATE IN DELAWARE WLAX HISTORY...

MAR

26/28

The Fightin' Blue Hens are 5-3 all-time in games played on March 26, most recently defeating Old Dominion, 12-11, in 2022 behind three goals and two assists from **Lizzie Yurchak** and four points apiece from **Riley Gillin** and **Delaney McDaniel**.

Delaware is 7-3 all-time on March 28, including a 12-10 victory at then-No. 11 Princeton in 2015. **Shannon Hawley** scored five goals in the win over the Tigers and **McKenzie Rafferty** added a hat trick.

ACTIVE POINTS LEADERS

Name	Yr.	G	A	P
Ella Rishko	Sr.	122	31	153
Jaclyn Marszal	Sr.	58	67	125
Morgan Gore	Sr.	76	9	85
Callie Drab	Sr.	32	26	58
Riley Sturtevant	Sr.	27	7	34
Sophia Muscolino	So.	13	19	32
McKenzie Didio	Sr.	26	1	27
Sam Paradise	Jr.	20	2	22
Lulu Rishko	So.	15	5	20
Maggie Craytor	So.	11	3	14
Grayson Buono	So.	7	5	12
Maggie Porter	Fr.	7	3	10
Julia Ciufo	Jr.	3	3	6
Sydney O'Donnell	So.	4	1	5
Meg MacMurray	So.	1	1	2
Alison Swartout	Sr.	1	0	1
Kennedy Radziul	So.	0	1	1
Kat Basesggio	Jr.	0	0	0
Molly Baumgratz	Jr.	0	0	0
Ellie Dassoulas	Sr.	0	0	0
Nichelle Desbordes	So.	0	0	0
Mia Didio	Sr.	0	0	0
Maggie Farragher	Sr.	0	0	0
Amanda Gazelle	Fr.	0	0	0
Jenny Green	Fr.	0	0	0
Lara Hoeflich	So.	0	0	0
Erin Hussey	Fr.	0	0	0
Mary Matey	Jr.	0	0	0
Kate Mercer	Sr.	0	0	0
Maddy Mobilia	Jr.	0	0	0
Marin Mooney	Fr.	0	0	0
Kylie O'Brien	So.	0	0	0
Julia Reagan	Sr.	0	0	0
Sadie Schultz	Fr.	0	0	0
Lena Stolarick	So.	0	0	0
Stella Stolarick	So.	0	0	0

GOAL/POINT STREAKS

Name	Consecutive Games	
	w/Point	w/Goal
Riley Sturtevant	17	6
Jaclyn Marszal	17	3
Ella Rishko	7	7
Sophia Muscolino	6	6
Maggie Porter	5	4
Morgan Gore	4	4
Maggie Craytor	3	3
Grayson Buono	3	1
Sydney O'Donnell	2	2
Callie Drab	2	1
Meg MacMurray	2	1
Lulu Rishko	1	1
Kennedy Radziul	1	0

saac queen

Senior **McKenzie Didio** is currently in her second year serving as president of Delaware's Student-Athlete Advisory Committee (SAAC). During the 2025-26 academic year, Didio is also serving as a vice chair representative for Conference USA's SAAC, alongside softball graduate student **Claire Woods**.

there's something in the gene pool

The Blue Hens had two pairs of sisters on the team who are both two-thirds of a set of triplets. Seniors **Jaclyn** and **Steph Marszal** have a third sister, Jamie, who is a senior at Loyola Maryland. Sophomores **Lena** and **Stella Stolarick** also have a third sister who is on the Holy Cross track & field team.

The genetic trait of twins runs strong on the Blue Hens' roster. Seniors **McKenzie** and **Mia Didio** have spent their entire careers at UD, while junior **Molly Baumgratz** has a twin sister - Ellie - who attends the University of Tennessee. Freshman **Marina Mersch** has a twin sister - Chiara - who is also a freshman at Delaware.

Ella and **Lulu Rishko** make up a fourth set of sisters on the 2026 roster. Additionally, junior **Mary Matey's** older sister, **Kellie Ann**, layed defense for the Blue Hens from 2021-24. They were both on the roster during the 2024 season.

nakrasius promoted

Back in June, head coach **Amy Altig** announced the promotion of **Kara Nakrasius** to associate head coach. Nakrasius joined the UD program in August 2022 and has spent the past three seasons overseeing UD's efforts on defense and at the draw. In 2025, the Blue Hens ranked eighth nationally in caused turnovers per game (11.19) after ranking ninth in 2024 (10.44). Delaware has set eight program records on defense and at the draw in three seasons under Nakrasius.

Records under Nakrasius

- Team single-game CT (26)
- Team single-game GB (33)
- Team single-game DC (26)
- Team single-season DC (240)
- Individual single-game CT (Hranicka, 11)
- Individual single-season CT (Hranicka, 50)
- Individual single-game DC (Rishko, 15)
- Individual career DC (Livornese, 223)

always fightin'

Senior **Jaclyn Marszal** transferred to Delaware after playing her freshman season at the University of Notre Dame, going from the Fighting Irish to the Fightin' Blue Hens. Marszal is UD's top returning scorer from a season ago when she had 21 goals and 29 assists for 50 points. Entering her third season with the Blue & Gold, Marszal has 97 points (46g, 51a) in 32 games for Delaware after scoring two goals in five games at Notre Dame.

no place like home

Senior **Ella Rishko** played her first two collegiate seasons at Virginia Tech before transferring home to the First State to play her final two years as a Blue Hen alongside her sister **Lulu**. The Rehoboth Beach, Delaware native led UD with 36 goals and 55 draw controls in 2025, finishing with 45 total points. In two seasons at Virginia Tech, Rishko had 61 goals and 75 points over 32 games.

SCORING SUPERLATIVES

	'23	'24	'25	'26	TOT
Multi-Goal Games					
Ella Risho	11	2	11	7	31
Morgan Gore	2	5	9	4	20
Jaclyn Marszal	0	6	5	3	14
McKenzie Didio	2	1	0	4	7
Callie Drab	0	3	3	1	7
Lulu Rishko	--	--	2	3	5
Riley Sturtevant	0	0	4	2	6
Sam Paradise	--	1	4	--	5
Sophia Muscolino	--	0	0	2	2
Maggie Craytor	--	--	1	1	2
Grayson Buono	--	--	0	1	1
Sydney O'Donnell	--	--	0	1	1
Maggie Porter	--	--	--	1	1
Hat Tricks					
Ella Rishko	7	2	6	7	22
Morgan Gore	1	0	5	3	9
Jaclyn Marszal	0	4	2	1	7
Callie Drab	0	0	2	0	2
Sam Paradise	--	1	1	0	2
Riley Sturtevant	0	0	0	2	2
Maggie Craytor	--	--	1	1	2
Sophia Muscolino	--	0	0	1	1
Grayson Buono	--	--	0	1	1
Multi-Point Games					
Ella Risho	12	6	12	8	38
Jaclyn Marszal	0	12	14	7	33
Morgan Gore	4	5	9	5	23
Callie Drab	0	7	6	3	16
Riley Sturtevant	0	0	4	4	8
McKenzie Didio	2	1	0	4	7
Sophia Muscolino	--	1	0	6	7
Lulu Rishko	--	--	3	3	6
Sam Paradise	--	1	5	--	6
Grayson Buono	--	--	0	4	4
Maggie Craytor	--	--	1	2	3
Sydney O'Donnell	--	--	0	2	2
Maggie Porter	--	--	--	2	2
Julia Ciufo	--	0	0	1	1
Games with 5+ Points					
Ella Risho	4	1	4	1	10
Jaclyn Marszal	0	4	3	2	9
Sophia Muscolino	--	0	0	3	3
Morgan Gore	0	0	1	1	2
Riley Sturtevant	0	0	0	1	1
Grayson Buono	--	--	0	1	1
Callie Drab	0	0	1	0	1
Games with 10+ Saves					
Steph Marszal	--	4	3	3	10

ALTIG VS.

OPPONENT	H	A	N	OVR
Army	0-1	0-0	0-0	0-1
Austin Peay *	0-0	1-0	0-0	1-0
Campbell	1-0	1-0	0-0	2-0
Coastal Carolina	0-1	0-0	0-0	0-1
Delaware State	1-0	0-0	0-0	1-0
Denver	0-0	0-1	0-0	0-1
Drexel	0-2	1-2	0-1	1-5
Duquesne	1-0	0-0	0-0	1-0
Elon	2-0	2-1	0-0	4-1
George Mason	0-0	0-1	0-0	0-1
Georgetown	0-3	1-3	0-0	1-6
Hofstra	0-2	2-0	0-0	2-2
Jacksonville *	0-0	0-0	0-0	0-0
James Madison	0-0	0-1	0-0	0-1
Kennesaw State *	0-0	0-0	0-0	0-0
Kent State	1-0	0-0	0-0	1-0
La Salle	1-0	0-1	0-0	1-1
Lafayette	2-0	0-0	0-0	2-0
Lehigh	1-0	1-0	0-0	2-0
Liberty *	0-0	0-0	0-0	0-0
Lindenwood *	0-0	1-0	0-0	1-0
Maryland	0-0	0-1	0-0	0-1
Monmouth	2-0	1-0	0-0	3-0
Mount St. Mary's	2-0	1-0	0-0	3-0
Navy *	0-1	0-0	0-0	0-1
Niagara	0-0	0-0	0-1	0-1
Old Dominion	1-0	1-0	0-0	2-0
Penn	0-0	0-1	0-0	0-1
Princeton	0-1	0-0	0-0	0-1
Queens *	0-0	0-0	0-0	0-0
Rutgers	0-2	0-2	0-0	0-4
Saint Joseph's	0-1	0-1	0-0	0-2
Stetson *	0-0	0-0	0-0	0-0
Stony Brook	0-1	0-2	0-1	0-4
Temple	1-2	1-2	0-0	2-4
Towson	1-2	1-0	0-1	2-3
UMBC	2-1	2-0	0-0	4-1
Wagner	1-0	1-0	0-0	2-0
William & Mary	2-0	0-2	0-0	2-2
TOTALS	22-20	19-20	0-4	41-44

Bold indicates 2026 opponent
 * Indicates first meeting in 2026

impressive in the classroom

In addition to their on-field success, the Hens have been showcasing their hard work in the classroom. The Blue Hens had a 3.52 team GPA during the 2025 fall semester and five student-athletes - **McKenzie Didio, Mia Didio, Amanda Gazelle, Morgan Gore** and **Jaclyn Marszal** - posted perfect 4.0 semesters.

new opponents on schedule

With Delaware beginning a New Era in the ASUN this season, the Blue Hens will be facing a number of first-time opponents. Eight of the team's 16 games will be against programs UD has never played, including seven of Delaware's eight ASUN matchups. The new opponents consist of Navy (Feb. 18), Austin Peay (March 19), Lindenwood (March 21), Jacksonville (March 26), Stetson (March 28), Kennesaw State (Apr. 9), Queens (Apr. 16) and Liberty (Apr. 22).

matey family affair

Junior defender **Mary Matey** is continuing a couple of family legacies as she is the fourth sister in her family to play Division I college lacrosse. She overlapped in Newark with her sister **Kellie Ann** who was also a defender for the Blue Hens from 2021-24). She also had a sister, Rachel, who played defense at James Madison (2019-23) and her oldest sister, Meghan, was a midfielder at Ohio State (2017-20).

Since 2021, Matey and her sisters have all worn #22 on the lacrosse field to honor their late father, Dave, who tragically passed away after a battle with cancer. He wore #22 as a college football linebacker at Ursinus.

glenelg pipeline

The Blue Hens have done well recruiting in Maryland, with 12 Marylanders on the 2026 roster. There are four Hens on the roster who hail from Howard County and attended high school in Glenelg. Senior twins **Jaclyn** and **Steph Marszal** (Catonsville) as well as sophomore **Nichelle Desbordes** (Ellicott City) all come from Glenelg Country School, while sophomore **Lara Hoeflich** (Glenelg) went to Glenelg High School.

new head hen

Jordan Skolnick was named the University of Delaware's Director of Athletics & Campus Recreation in January. Skolnick joined UD Athletics in 2016 and served as interim director of athletics & campus recreation since March 2025. He is the eighth person in the department's history to hold the permanent role. Skolnick successfully guided the department through its transitions to Conference USA and the Football Bowl Subdivision (FBS), while prioritizing a renewed focus on campus collaboration to increase partnerships and ensure the University's ability to capitalize on increased national exposure.

for the 302

Delaware is one of 11 states that are represented by one area code. Delaware is the 302, while the other states are: Alaska, Hawaii, Maine, Montana, New Hampshire, North Dakota, Rhode Island, South Dakota, Vermont, and Wyoming.

birds of a feather

With over 1,100 schools in the NCAA, the Blue Hens are one of two institutions with the nickname in the hen family. Pomona-Pitzer, a Division III institution, is nicknamed the Sagehens. Both South Carolina and Jacksonville State have the nickname Gamecocks and Coastal Carolina is the Chanticleers, which both fall in the rooster family.

MILESTONE WATCH

100-Career Points

Morgan Gore	85
-------------	----

50-Career Ground Balls

Maggie Farragher	42
Morgan Gore	41
Jaclyn Marszal	41
Kennedy Radziul	41

150-Career Draw Controls

Ella Rishko	136
-------------	-----

50-Career Draw Controls

Morgan Gore	48
Molly Baumgratz	47

50-Career Caused Turnovers

Ella Rishko	44
Kat Baseggio	39
Maggie Farragher	37

GAMES/STARTS STREAKS

	Consecutive	
	GP	GS
Kat Baseggio *	41	36
Callie Drab	41	0
Jaclyn Marszal *	41	6
Riley Sturtevant	25	0
Ella Rishko *	25	25
Lulu Rishko	23	8
Steph Marszal	18	18
Molly Baumgratz	17	14
Kennedy Radziul	17	9
Maggie Farragher	12	12
Lena Stolarick	10	10
Mary Matey	10	9
Maggie Porter	9	0
Maggie Craytor	9	0
Sydney O'Donnell	9	0
McKenzie Didio	8	0
Morgan Gore	6	6
Sophia Muscolino	6	6
Julia Ciufu	4	0
Grayson Buono	3	0
Meg MacMurray	2	0
Mia Didio	1	0

* indicates has played every game of UD career

2026 DELAWARE NUMERICAL ROSTER

#	NAME	POS.	YR.	HT.	HOMETOWN/HIGH SCHOOL (PREV. SCHOOL)
1	Stella Stolarick	A	So.	5-5	Haddonfield, N.J. / Haddonfield Memorial
2	Grayson Buono	A	So.	5-7	Wayne, Pa. / Radnor
3	Lara Hoeflich	D	So.	5-7	Glenelg, Md. / Glenelg High
4	Marin Mooney	A	Fr.	5-8	Villanova, Pa. / Radnor
6	Jenny Green	D	Fr.	5-5	Garnet Valley, Pa. / Garnet Valley
7	Julia Ciufu	M	Jr.	5-3	Reisterstown, Md. / Roland Park Country
8	Jaclyn Marszal	A	Sr.	5-8	Catonsville, Md. / Glenelg Country School (Notre Dame)
9	Kat Baseggio	D	Jr.	5-9	Guilford, Conn. / Guilford
10	McKenzie Didio	A	Sr.	5-6	Westport, Conn. / Staples
11	Julia Reagan	M	Sr.	5-3	East Atlantic Beach, N.Y. / Sacred Heart Academy
12	Erin Hussey	M	Fr.	5-7	Severna Park, Md. / Severna Park
13	Maggie Craytor	A	So.	6-0	Charlottesville, Va. / Western Albemarle
14	Sophia Muscolino	A	Jr.	5-4	Baldwinsville, N.Y. / Charles W. Baker
15	Meg MacMurray	A	So.	5-8	Chester Springs, Pa. / The Hill School (Maryland)
16	Callie Drab	A	Sr.	5-7	Suffern, N.Y. / Suffern
17	Morgan Gore	M	Sr.	5-6	Crofton, Md. / Arundel
18	Lena Stolarick	D	So.	5-4	Haddonfield, N.J. / Haddonfield Memorial
19	Maggie Porter	A	Fr.	5-5	Stevenson, Md. / St. Paul's School for Girls (Penn State)
20	Sam Paradise	M	Jr.	5-8	Perry Hall, Md. / Maryvale Preparatory
21	Kate Mercer	D	Sr.	5-8	Katonah, N.Y. / John Jay
22	Mary Matey	D	Jr.	5-6	Phoenixville, Pa. / Archbishop Carroll
23	Lulu Rishko	M	So.	5-5	Rehoboth Beach, Del. / Cape Henlopen
24	Kylie O'Brien	D	So.	5-6	Berwyn, Pa. / Academy of Notre Dame de Namur
25	Amanda Gazelle	M	Fr.	5-3	Odenton, Md. / Archbishop Spalding
26	Alison Swartout	M	Sr.	5-4	Charlottesville, Va. / Monticello
27	Maddy Mobilia	D	Jr.	5-1	New Rochelle, N.Y. / The Ursuline School
28	Maggie Farragher	D	Sr.	5-7	Evanston, Ill. / Evanston Township
29	Kennedy Radziul	D	So.	5-9	Northport, N.Y. / Northport
30	Marina Mersch	GK	Fr.	5-3	Media, Pa. / Cardinal O'Hara
31	Maddie George	GK	So.	5-9	Centreville, Md. / Queen Anne's County
32	Ella Rishko	A	Sr.	5-5	Rehoboth Beach, Del. / Cape Henlopen (Virginia Tech)
33	Sydney O'Donnell	M	So.	5-8	Downingtown, Pa. / Downingtown West
34	Riley Sturtevant	M	Sr.	5-7	Springfield, Va. / West Springfield
35	Nichelle Desbordes	M	So.	5-3	Ellicott City, Md. / Glenelg Country School
37	Mia Didio	M	Sr.	5-5	Westport, Conn. / Staples
38	Sadie Schultz	M	Fr.	5-6	Riverhead, N.Y. / Riverhead
40	Steph Marszal	GK	R-Sr.	5-4	Catonsville, Md. / Glenelg Country School
41	Molly Baumgratz	M	Jr.	5-8	Charlotte, N.C. / Charlotte Catholic
42	Ellie Dassoulas	A	Sr.	5-8	Towson, Md. / Roland Park Country School

GEOGRAPHICAL

Connecticut (3)

- 9 Kat Baseggio
- 10 McKenzie Didio
- 37 Mia Didio

Delaware (2)

- 32 Ella Rishko
- 23 Lulu Rishko

Illinois (1)

- 28 Maggie Farragher

Maryland (12)

- 3 Lara Hoeflich
- 7 Julia Ciufu
- 8 Jaclyn Marszal
- 12 Erin Hussey
- 17 Morgan Gore
- 19 Maggie Porter
- 20 Sam Paradise
- 25 Amanda Gazelle
- 31 Maddie George
- 35 Nichelle Desbordes
- 40 Steph Marszal
- 42 Ellie Dassoulas

North Carolina (1)

- 41 Molly Baumgratz

New Jersey (2)

- 18 Lena Stolarick
- 1 Stella Stolarick

New York (7)

- 11 Julia Reagan
- 14 Sophia Muscolino
- 16 Callie Drab
- 21 Kate Mercer
- 27 Maddy Mobilia
- 29 Kennedy Radziul
- 38 Sadie Schultz

Pennsylvania (8)

- 2 Grayson Buono
- 4 Marin Mooney
- 6 Jenny Green
- 15 Meg MacMurray
- 22 Mary Matey
- 24 Kylie O'Brien
- 30 Marina Mersch
- 33 Sydney O'Donnell

Virginia (3)

- 13 Maggie Craytor
- 26 Alison Swartout
- 34 Riley Sturtevant

PRO-NUN-SEE-AY-SHUNS

1 Stella Stolarick	STOLL-are-ick	27 Maddy Mobilia	Moe-BEAL-yuh
2 Grayson Buono	BYOU-no	28 Maggie Farragher	FAIR-uh-grr
3 Lara Hoeflich	LAH-ruh HOE-flick	29 Kennedy Radziul	RAD-zool
4 Marin Mooney	MARE-in	30 Marina Mersch	MERSH
7 Julia Ciufu	CHEW-foe	34 Riley Sturtevant	STIR-duh-vont
8 Jaclyn Marszal	MARZ-elle	35 Nichelle Desbordes	des-BORE-des
9 Kat Baseggio	Buh-SEE-GEE-oh	37 Mia Didio	DID-ee-oh
10 McKenzie Didio	DID-ee-oh	40 Steph Marszal	MARZ-elle
14 Sophia Muscolino	Mus-KUH-lee-no	41 Molly Baumgratz	BUM-gratz
18 Lena Stolarick	LEE-nuh STOLL-are-ick	42 Ellie Dassoulas	da-SOOL-is
22 Mary Matey	MAY-tee	AC Kara Nakrasius	Nah-KRAY-shus
26 Alison Swartout	SWORE-tout	AC Lilly Siskind	sis-KIND

ROSTER BY CLASS

SENIORS (13)

- Ellie Dassoulas
- McKenzie Didio
- Mia Didio
- Callie Drab
- Maggie Farragher
- Morgan Gore
- Jaclyn Marszal
- Steph Marszal
- Kate Mercer
- Julia Reagan
- Ella Rishko
- Riley Sturtevant
- Alison Swartout

JUNIORS (7)

- Kat Baseggio
- Molly Baumgratz
- Julia Ciufu
- Mary Matey
- Maddy Mobilia
- Sophia Muscolino
- Sam Paradise

SOPHOMORES (12)

- Grayson Buono
- Maggie Craytor
- Nichelle Desbordes
- Maddie George
- Lara Hoeflich
- Meg MacMurray
- Kylie O'Brien
- Sydney O'Donnell
- Kennedy Radziul
- Lulu Rishko
- Lena Stolarick
- Stella Stolarick

FRESHMEN (7)

- Amanda Gazelle
- Jenny Green
- Erin Hussey
- Marina Mersch
- Marin Mooney
- Maggie Porter
- Sadie Schultz

HEAR OUR NAMES





THE ALTIG FILE

Hometown: Millersville, Md.
Alma Mater: James Madison '05
Degree: Kinesiology
Years in Coaching: 21st in 2026

NOTABLE HIGHLIGHTS

Coach

2015 IWLCA Assistant Coach of the Year
 U.S. Lacrosse Virginia Chapter Hall of Fame
 USA National Team Defensive Coordinator

Player

2x All-CAA selection
 2x CAA Champion
 2009 USA World Cup Training Team
 2008 USA Prague Touring Team
 2003 USA National Team

AS DELAWARE HEAD COACH

Year	7th in 2026
Overall Record	41-44
Home	22-20
Away	19-20
Neutral	0-4
vs. Ranked Teams	1-14
In ASUN Games	2-0
Postseason	0-3

ALTIG YEAR-BY-YEAR

YEAR	W-L	PCT.	CONF
2020	2-3	.400	1-0
2021	1-5	.167	0-0
2022	5-12	.294	2-4
2023	8-8	.500	4-3
2024	10-6	.625	3-5
2025	10-6	.625	6-2
2026	5-4	.556	2-0
TOTAL	41-44	.482	18-14

First career win: 17-8 vs. Duquesne (3/4/20)

HEAD COACH AMY ALTIG

Amy Altig enters her seventh season at the helm of the Fightin' Blue Hens in 2026. She was named the seventh coach of University of Delaware women's lacrosse program on June 3, 2019.

Altig has led the Blue Hens to immense success on the field, qualifying for the CAA Championship in three of four years since 2022. The program recorded back-to-back 10-win seasons in 2024-25, achieving the mark for the first time 2016, and UD's 7-1 record to begin the 2024 season was the best start since the 2016 season. Delaware won six CAA games in 2025, the most since joining the conference and the program's most league wins since 1999.

On March 11, 2022, the Blue Hens defeated No. 18 Temple on the road for their first win over a nationally-ranked opponent since 2017.

Delaware's student-athletes have taken home plenty of hardware since Altig arrived in Newark. Delaney McDaniel earned CAA Rookie of the Year honors in 2018, UD's first conference major award winner since 2016. Madison Hranicka was named the CAA Defensive Player of the Year in consecutive seasons (2023-24). The Blue Hens have earned 14 all-conference honors, led by three-straight All-CAA First Team selections by Hranicka (2022-24) and three by McDaniel. On the national level, Hranicka earned All-America honors in 2024 and all-region recognition in both 2023 and 2024. Erin Gormley was an all-region selection in 2025.

The Blue & Gold have had several statistical achievements with Altig at the helm. In 2025, the Blue Hens led the CAA and ranked sixth nationally in free position percentage (.545) while also ranking eighth in the country in caused turnovers per game (11.19). Against Lafayette in 2024, the Blue Hens set a program record for caused turnovers (26) and tied the record for ground balls (33). Goalkeeper Steph Marzsai finish ninth in the country in save percentage (.489) in 2024. Hranicka set the single-season program record in 2023 with 50 caused turnovers.

Altig arrived to Newark following nine seasons at Penn State University, where she was an assistant coach for six years and an associate head coach for the final three. She helped lead the Nittany Lions to 111 wins with seven NCAA Tournament appearances and two trips to the NCAA Tournament Final Four. During her tenure, she coached 19 All-Americans, 36 all-region performers, 40 all-conference selections in addition to more than 25 student-athletes who received academic honors. Additionally, PSU boasted three Conference Goalkeepers of the Year under Altig's guidance.

After helping Penn State to a third NCAA quarterfinal appearance in four years in 2015, Altig was named IWLCA Assistant Coach of the Year and was inducted to the U.S. Lacrosse Virginia Chapter Hall of Fame.

Prior to her time at PSU, Altig held assistant coaching stints at Princeton University (2007-10) and the University of Richmond (2005-06).

As a goalkeeper at James Madison University from 2001-05, Altig led the Dukes to two CAA titles, was a two-time all-conference pick and was selected to the North/South STX Senior All-Star Game. A two-time team captain, she also earned a nod to the 2004 CAA All-Tournament Team and still ranks in the Top 12 of three career statistical categories at JMU.

Altig earned a spot on the USA National Team in 2003 and was part of the 2009 USA World Cup Training Team and 2008 USA Prague Touring Team. She also served as a field coach for USA Tryouts from 2015-17. Since 2017, Altig has been the defensive coordinator/goalkeepers coach for the USA National Team.

A native of Millersville, Md., Altig earned a bachelor's degree in kinesiology with a concentration in sports management from James Madison in 2005. She and her wife, Megan, have two daughters, Ava, and Ryan, and a son, Brooks.

ALTIG'S COACHING ASSIGNMENTS

YEAR	SCHOOL	POSITION
2020-Pres.	Delaware	Head Coach
2017-19	Penn State	Associate Head Coach
2011-16	Penn State	Assistant Coach
2007-10	Princeton	Assistant Coach
2005-06	Richmond	Assistant Coach

SUPERLATIVES UNDER ALTIG

Most Goals	25, at Lindenwood (3/21/26)	Most Opp. Goals	20, 2x, last vs. Drexel (5/1/25)
Fewest Goals	2, 2x, last at Maryland (3/1/22)	Fewest Opp. Goals	3, 2x, last at Austin Peay (3/19/26)
Most SOG	36, vs. Delaware State (2/24/21)	Most Opp. SOG	36, at Maryland (3/1/22)
Fewest SOG	6, vs. Stony Brook (4/6/24)	Fewest Opp. SOG	6, 2x, last vs. Lafayette (3/6/24)
Most GBs	33, vs. Lafayette (3/6/24)	Most Opp. GBs	30, vs. William & Mary (4/9/22)
Most CTs	26, vs. Lafayette (3/6/24)	Most Opp. CTs	19, vs. Lafayette (3/6/24)
Most DCs	26, vs. Old Dominion (2/25/23)	Most Opp. DCs	28, vs. Georgetown (3/8/25)
Most Saves	21, at Maryland (3/1/22)	Most Opp. Saves	20, 2x, last at Old Dominion (3/26/22)

ASSISTANT COACHES

KARA NAKRASIOUS



Kara Nakrasious joined the coaching staff in August 2022 as an assistant coach and was promoted to associate head coach in June 2025. Nakrasious works primarily with the program's defensive and draw control units.

Under her guidance, the UD defense ranked in the top-10 nationally in 2024 and 2025 in caused turnovers per game. In 2024, the Blue Hens held opponents to the least number of goals allowed (160) since the 2017 season. Madison Hranicka earned back-to-back CAA Defensive Player of the Year recognition in 2023 and 2024.

At the draw, Nakrasious oversaw Delaware's unit that shattered the program record for draws in a single season (240) in 2023, averaging a CAA-leading 15.0 draw controls per game. Delaware set a program record with 26 draw controls in a single-game against Old Dominion. Danielle Livornese became UD's career draw control leader, finishing with 223. Ella Rishko set the individual single-game mark with 15 draw controls against Towson in 2025.

Prior to her arrival at UD, Nakrasious was on staff at Quinnipiac as an assistant coach in 2022, leading a defense that allowed a league-low 197 goals and ranked second in the MAAC with 8.88 caused turnovers per game.

Nakrasious was a five-year starter at Temple from 2016-21, where she was a four-year captain for the Owls. She broke the career draw control record with a total of 236 and ranked seventh in program history with 144 ground balls.

She was a two-time all-conference selection, earning All-AAC First Team honors in 2019 and second team recognition in 2021. Nakrasious was a four-time winner of the Devon Marie Lam "T" Means More Award which is given to the person who most exemplifies Temple Lacrosse through selflessness, dedication & desire for team success (2017-20). She was also a winner of the Enterprise Spirit & Sportsmanship Award (2017) & Parliament Award (2019) for the student-athlete who has demonstrated a devotion to the essence of sport through their acts of sportsmanship.

Nakrasious earned both her bachelor's (2020) and master's (2021) degrees from Temple University.

SAMANTHA PRATT



Sam Pratt joined the Delaware women's lacrosse coaching staff as an associate head coach and offensive coordinator in August 2024.

In her first season with the Blue Hens, UD's offense averaged 13.06 goals per game to rank third in the CAA and was second in assists per game (6.25). Delaware led the conference and ranked sixth nationally with a .545 free position percentage, and Morgan Gore set the program record with 13 free position goals. Gore and Delaney McDaniel were named to the All-CAA Second Team while Lulu Rishko earned all-rookie honors.

Pratt came to Delaware after spending six seasons on the coaching staff at Mount St. Mary's. During her tenure, Pratt coached 29 student-athletes to all-league honors between the Northeast Conference (NEC) and the Metro Atlantic Athletic Conference (MAAC). The team posted a 63-35 record and sported a pair of NEC Offensive Players of the Year, an NEC Midfielder of the Year, and a NEC Rookie of the Year. Her offense in 2019 ranked 20th nationally in scoring with 14.11 goals per game. Two years later, the team finished 14th in the country with 15.06 goals per game.

Prior to joining the staff at Mount St. Mary's Pratt spent a season at La Salle where she served as offensive coordinator.

Pratt, then Sam Nolan, was a two-year team captain at UMBC (2013-17). She finished her career with 117 goals and 73 assists for 190 points, graduating as the program's all-time leader in assists, and ranked third in career points. She was a First Team All-America East selection in her final two seasons.

The Fallston, Maryland native earned a pair of degrees from UMBC in sociology (2016) and media and communication (2017). She received a master's degree in sport management from Mount St. Mary's in 2019.

Sam and her husband, Joe, a former UMBC men's soccer player, were married in 2022. The two have a pair of labrador retrievers, Finley & Champion.

LILLY SISKIND



Lilly Siskind joined the Blue Hens after a five-year collegiate career at Old Dominion University, where she set multiple program records and garnered national recognition.

While at ODU, Siskind was a starter in 74 of 80 career games played. She collected 214 points with 149 goals and 65 assists over her five seasons with the program, adding 46 ground balls, 30 draw controls, and 33 caused turnovers.

Nationally, Siskind ranked in the top 10 for most career points in American Athletic Conference (AAC) history. In 2022, she ranked fourth & second in the AAC and 25th & 22nd national for most points and goals, respectively. Additionally, she earned First Team All-AAC in 2022, Second Team All-AAC in 2021, and VaSIDA All-State Second Team in 2021 & 2022.

Siskind left her mark on the ODU program, finishing third in career points, fourth career assists, and fifth in career goals.

Off the field, Siskind completed two bachelor's degrees in marketing and management along with a master's degree in sports management over her five-year tenure at ODU. She picked up an Academic All-District honor this past season as well as recognition from the AAC All-Academic, Conference USA academic honor roll, Big East academic honor roll, and ODU honor roll.

Siskind grew up in West Chester, Pennsylvania where she played lacrosse at Henderson High School. Her father was also a collegiate lacrosse player and spent his career at Towson where he was given All-American status his senior season.

SUPPORT STAFF

Jake Schrum

Tim Morrissey

Kelly Stafford

Dr. Christine Jehu

Sport Administrator

Academic Advisor

Athletic Trainer

Sport Psychologist

Austin Mark

Jack Levis

Brendan Thomas

Ryan Stiles

Team Nutritionist

Equipment Manager

Athletic Communications

Strength & Conditioning Coach

ATLANTIC SUN CONFERENCE

STAFF

Jeff Bacon.....Commissioner
 Kalista Gioglio.....Director / Executive Operations
 Jerome Rodgers.....Deputy Commissioner / COO
 Korinth Patterson.....Exec. Assoc. Comm. / Sport Admin. / SWA
 Kaitlin Parsons.....Senior Assoc. Comm. / External Operations
 Joseph Kaminski.....Senior Assoc. Comm. / Sport Admin.
 Justin Burdette.....Associate Commissioner / CFO
 David Miller.....Assistant Commissioner / Broadcasting
 Elyse Appelblatt.....Assistant Commissioner / Digital Content
 William Hall.....Assistant Commissioner / Sport Administration
 Carl Mattox.....Assistant Commissioner / Sport Administration
 Claire Johnson.....Director / Strategic Communications
 Noah Walter.....Assistant Director / FB and BBall Operations
 Rachel Cumberledge.....Assistant Director / Strategic Comms

2026 PRESEASON TEAM

Preseason Offensive Player of the Year: Kayleen Favreau, Queens

Preseason Defensive Player of the Year: Maggie Cuddy, Jacksonville

Preseason Midfielder of the Year: Katie Colavito, Liberty

Preseason Goalkeeper of the Year: Brookelynn Hodgkin, Jacksonville

2026 Preseason All-ASUN Team

A - Kayleen Favreau, Queens
 A - Ainsley Scruggs, Jacksonville
 A - Ava Rajala, Liberty
 A - Luci Selander, Lindenwood
 MF - Katie Colavito, Liberty
 MF - Abby Moran, Jacksonville
 MF - Gabrielle Beaudet, Coastal Carolina
 MF - Allyx Berry, Jacksonville
 D - Maggie Cuddy, Jacksonville
 D - Jenna Burrow, Liberty
 D - Grace Lord, Coastal Carolina
 D - Savannah Donahue, Queens
 D - Madeleine Klunder, Liberty
 GK - Brookelynn Hodgkin, Jacksonville
 * a tie in voting resulted in a 14-person team

2026 PRESEASON POLL

Rank (1st place votes)	Points
1. Liberty (7)	79
2. Jacksonville	63
3. Coastal Carolina	62
4. Delaware (2)	60
5. Lindenwood	44
6. Queens	36
7. Kennesaw State	29
8. Stetson	20
9. Austin Peay	12



2026 ASUN WOMEN'S LACROSSE STANDINGS

School	ASUN	PCT.	Home	Away	Overall	PCT.	Home	Away	Neutral	Streak
Jacksonville	2-0	1.000	2-0	0-0	6-2	.750	6-0	0-2	0-0	W2
Kennesaw State	1-0	1.000	1-0	0-0	6-4	.600	3-2	3-2	0-0	W1
Delaware	2-0	1.000	0-0	2-0	5-4	.556	2-2	3-2	0-0	W4
Liberty	2-0	1.000	0-0	2-0	4-5	.444	0-5	4-0	0-0	W3
Stetson	1-0	1.000	1-0	0-0	1-8	.111	1-4	0-4	0-0	W1
Coastal Carolina	0-2	.000	0-0	0-2	6-4	.600	3-0	3-4	0-0	L2
Austin Peay	0-2	.000	0-2	0-0	4-7	.364	2-5	2-2	0-0	L4
Lindenwood	0-2	.000	0-2	0-0	3-7	.300	2-3	1-4	0-0	L3
Queens	0-2	.000	0-0	0-2	0-9	.000	0-4	0-5	0-0	L9

2026 ASUN WEEKLY AWARDS

Offensive Player of the Week

Feb. 9 - Alexandra Horn, Coastal Carolina

Feb. 17 - Sienna Wyatt, Queens

Feb. 23 - Maeve Brennan, Jacksonville

March 2 - Shae Hagans, Jacksonville

March 9 - Luci Selander, Lindenwood

March 16 - Lexi Tinker, Kennesaw State

March 23 - Sophia Nesci, Liberty

March 30

April 6

April 13

April 20

April 27

Defensive Player of the Week

Feb. 9 - Grace Lord, Coastal Carolina

Feb. 17 - Charlotte Sadler, Coastal Carolina

Feb. 23 - Charlotte Sadler, Coastal Carolina

March 2 - Maggie Cuddy, Jacksonville

March 9 - Brynn Delaney, Lindenwood

March 16 - Charlotte Sadler, Coastal Carolina

March 23 - Abby Moran, Jacksonville

March 30

April 6

April 13

April 20

April 27

UNIVERSITY OF DELAWARE

IN THE RANKINGS

The University of Delaware is ranked in the top 1.6% globally, among nearly 21,000 institutions, based on educational quality, employability, faculty quality and research. In late 2024, Wall Street Journal ranked UD at No. 10 among public universities and No. 26 among all U.S. universities based on student professional readiness and career outcomes.

Physical Therapy graduate program
No. 1 in the nation
(U.S. News & World Report)

One of 24 UD graduate programs ranked in the top-100 by U.S. News

Entrepreneurship undergraduate program
No. 3 in the Mid-Atlantic
(The Princeton Review)

Chemical Engineering undergraduate program
No. 4 in the nation
(U.S. News & World Report)

One of six UD undergraduate programs ranked in the top-100 by U.S. News

Chemical Engineering graduate program
No. 8 in the nation
(U.S. News & World Report)

One of 24 UD graduate programs ranked in the top-100 by U.S. News

Online MBA program
No. 20 out of 355 in the nation
(U.S. News & World Report)

Online Master's in Education program
No. 20 out of 313 in the nation
(U.S. News & World Report)

Nursing undergraduate program
No. 40 in the nation
(U.S. News & World Report)
A 34-spot jump from last year's ranking

BEST VALUE

UD ranks among the country's best value propositions, according to U.S. News & World Report, Wall Street Journal, Kiplinger's and Forbes. This summer, The Princeton Review ranked UD among its 209 Best Value Colleges for 2025, earning one of the publication's highest return-on-investment ratings. Money magazine awarded UD 4½ stars out of a possible five in its 2025-26 rating of America's best colleges. The University, according to Money, "stands out for its affordability" as a public college providing an excellent value for in-state students, and is considered one of the Best Colleges in the Northeast.

distinguished history

In 1743, the school that would become the University of Delaware was just a tiny institution, with a graduating class of about a dozen. Three of those graduates – **Thomas McKean**, **George Read** and **James Smith** – would go on to sign the Declaration of Independence; Read would also sign the U.S. Constitution, helping launch a new paradigm of freedom for an entire nation and a beacon of liberty for much of the world.

first in study abroad

In 1923, UD initiated a program to enhance students' learning by giving them an overseas experience. Influenced by the carnage he saw as an ambulance driver in World War I, professor **Raymond Kirkbride** believed that understanding other cultures was critical to promoting peace. His idea would grow into the first study-abroad program in the United States. Today approximately a third of all UD students participate in study abroad programs offered around the world. This year, the University celebrates the 10-year anniversary of its World Scholars Program, through which a cohort of new students experience their first UD semester abroad. These students return to UD for the spring and, as juniors, they can elect one of 40 study-abroad experiences.

introducing ud's new leadership

Interim President **Laura Carlson** and Interim Provost **Bill Farquhar** have been at the helm since July 1. Carlson joined the University of Delaware community in 2022, serving as its chief academic officer when she became the University's 12th Provost. Farquhar has been a faculty member for more than 23 years in UD's Department of Kinesiology and Applied Physiology. He most recently served as the dean of UD's College of Health Sciences.

student applications are climbing

Interest in a University of Delaware education continues to soar. UD received more than 40,000 applications for this year's class of first-year students, setting a UD record for the seventh consecutive year. Over the last year, UD hosted more than 38,000 visitors (prospective students and their families) at open houses and campus tours, and awarded more than \$200 million in financial aid to its newest students.

incorporating ai into curriculum

AI has the potential to reshape higher education. UD has applied this technology in myriad ways and continues to explore further applications for artificial intelligence – including the launch of new academic offerings like an undergraduate major, a graduate degree program and a certificate; the creation of UD's First State AI Institute; and the incorporation of generative AI into curricula.

PROMINENT ALUMNI



joe Biden '65



chris christie '84



joe flacco '08



elena delle donne '13

delaware STARTERS BY GAME

OPPONENT	D	D	D	D	D	M	M	M	A	A	A	GK
at Temple	Baseggio	L. Stolarick	Matey	Farragher	Radziul	Gore	Sturtevant	Baumgratz	J. Marszal	Porter	E. Rishko	S. Marszal
Rutgers	Baseggio	L. Stolarick	Matey	Farragher	Radziul	Gore	L. Rishko	Baumgratz	Drab	Porter	E. Rishko	S. Marszal
Navy	Baseggio	L. Stolarick	Matey	Farragher	Radziul	L. Rishko	Sturtevant	Baumgratz	J. Marszal	Drab	E. Rishko	S. Marszal
UMBC	Baseggio	L. Stolarick	Matey	Farragher	Radziul	Gore	L. Rishko	Baumgratz	J. Marszal	Muscolino	E. Rishko	S. Marszal
at Georgetown	Baseggio	L. Stolarick	Matey	Farragher	Radziul	Gore	L. Rishko	Baumgratz	J. Marszal	Muscolino	E. Rishko	S. Marszal
at Drexel	Baseggio	L. Stolarick	Matey	Farragher	Radziul	Gore	L. Rishko	Baumgratz	J. Marszal	Muscolino	E. Rishko	S. Marszal
Mount St. Mary's	Baseggio	L. Stolarick	Matey	Farragher	Radziul	Gore	L. Rishko	Baumgratz	J. Marszal	Muscolino	E. Rishko	S. Marszal
at Austin Peay	Baseggio	L. Stolarick	Matey	Farragher	Radziul	Gore	L. Rishko	Baumgratz	J. Marszal	Muscolino	E. Rishko	S. Marszal
at Lindenwood	Baseggio	L. Stolarick	Matey	Farragher	Radziul	Gore	L. Rishko	Baumgratz	J. Marszal	Muscolino	E. Rishko	S. Marszal
Jacksonville												
Stetson												
Saint Joseph's												
Kennesaw State												
Coastal Carolina												
at Queens												
at Liberty												

delaware STAT LEADERS BY GAME

OPPONENT	GOALS	ASSISTS	POINTS	SOG	GB	CT	DC	SAVES
at Temple	Gore/E. Rishko (3)	Drab/J. Marszal (2)	Drab/Gore/E. Rishko (3)	E. Rishko (6)	Radziul/E. Rishko (3)	Radziul (3)	E. Rishko (9)	S. Marszal (5)
Rutgers	4 players (1)	Drab/J. Marszal (1)	6 players (1)	Porter/E. Rishko (3)	Baseggio (5)	Baseggio/Farragher (4)	4 players (1)	S. Marszal (8)
Navy	E. Rishko (3)	Sturtevant (2)	E. Rishko (3)	E. Rishko (6)	S. Marszal (3)	Farragher/E. Rishko (2)	E. Rishko (9)	S. Marszal (10)
UMBC	E. Rishko (4)	Craytor (2)	E. Rishko (4)	Gore/E. Rishko (6)	Farragher (3)	6 players (1)	Baumgratz/E. Rishko (8)	S. Marszal (10)
at Georgetown	E. Rishko (4)	Muscolino (4)	Muscolino (5)	E. Rishko (4)	Radziul (4)	3 players (2)	E. Rishko (2)	S. Marszal (10)
at Drexel	Sturtevant/E. Rishko (3)	7 players (1)	E. Rishko (4)	Sturtevant (4)	Radziul (4)	Radziul (5)	E. Rishko (4)	S. Marszal (6)
Mount St. Mary's	E. Rishko (4)	Muscolino (5)	E. Rishko (8)	E. Rishko (5)	5 players (2)	3 players (2)	Baumgratz (9)	S. Marszal (8)
at Austin Peay	Gore/J. Marszal (4)	Muscolino (3)	J. Marszal (6)	3 players (5)	6 players (2)	Baseggio (3)	Baumgratz (5)	S. Marszal (4)
at Lindenwood	Buono (5)	J. Marszal (6)	J. Marszal (8)	Buono (5)	Matey (3)	Baseggio/Radziul (2)	Baumgratz (6)	S. Marszal (3)
Jacksonville								
Stetson								
Saint Joseph's								
Kennesaw State								
Coastal Carolina								
at Queens								
at Liberty								



delaware HIGHS AND LOWS

GAME HIGHS	2026	ALTIG ERA
Goals	25, at Lindenwood (3/21/26)	25, at Lindenwood (3/21/26)
Assists	17, at Lindenwood (3/21/26)	17, at Lindenwood (3/21/26)
Goals in a Quarter	9, at Lindenwood (3/21/26)	9, 3x, last Q3 at Lindenwood (3/21/26)
1H Goals	14, at Austin Peay (3/19/26)	14, at Austin Peay (3/19/26)
2H Goals	16, at Lindenwood (3/21/26)	16, at Lindenwood (3/21/26)
Shots Attempted	42, vs. Mount St. Mary's (3/14/26)	47, vs. Lafayette, (2/15/23)
Shots on Goal	30, at Lindenwood (3/21/26)	36, vs. Delaware State (2/24/21)
Ground Balls	21, 2x, last at Austin Peay (3/19/26)	33, vs. Lafayette (3/6/24)
Draw Controls	19, at Lindenwood (3/21/26)	26, vs. Old Dominion (2/25/23)
Turnovers	22, at Temple (2/6/26)	28, vs. Old Dominion (2/25/23)
Caused Turnovers	16, vs. Rutgers (2/13/26)	26, vs. Lafayette (3/6/24)
Saves	10, 3x, last at Georgetown (3/7/26)	21, at Maryland (3/1/22)
Clears	19, at Georgetown (3/7/26)	27, vs. Lafayette (3/6/24)

GAME LOWS	2026	ALTIG ERA
Goals	4, vs. Rutgers (2/13/26)	2, at Maryland (3/1/22)
Assists	2, vs. Rutgers (2/13/26)	0, 2x, last at La Salle (2/27/21)
Goals in a Quarter	0, 4x, last Q3 at Georgetown (3/7/26)	0, 21x, last Q3 at Georgetown (3/7/26)
1H Goals	0, vs. Rutgers (2/13/26)	0, 3x, last vs. Rutgers (2/13/26)
2H Goals	3, vs. Navy (2/18/26)	1, 2x, last vs. Stony Brook (5/4/23)
Shots Attempted	20, vs. Navy (2/18/26)	7, at Stony Brook (4/6/24)
Shots on Goal	9, vs. Rutgers (2/13/26)	6, at Stony Brook (4/6/24)
Ground Balls	8, vs. Navy (2/18/26)	6, vs. Temple (2/20/21)
Draw Controls	3, at Georgetown (3/7/26)	3, at Georgetown (3/7/26)
Turnovers	12, 2x, last at Georgetown (3/7/26)	9, 2x, last vs. Delaware State (2/24/21)
Caused Turnovers	6, 2x, last vs. UMBC (3/4/26)	2, 2x, last at Stony Brook (3/18/23)
Saves	5, at Temple (2/6/26)	3, 3x, last vs. Lafayette (3/6/24)
Clears	13, vs. Navy (2/18/26)	10, at Monmouth (3/30/25)

PLAYER HIGHS UNDER ALTIG

Goals	6, Lizzie Yurchak, vs. Monmouth, 3/25/23
Assists	7, Delaney McDaniel, vs. Lafayette, 2/15/23
Points	9, Jaclyn Marszal, at William & Mary, 3/30/24
Shots Attempted	13, Mia DeRuggiero, vs. Elon, 3/7/20
Shots on Goal	8, 3x, last Lizzie Hsu, at Hofstra, 4/8/23
Ground Balls	8, Madison Hranicka, vs. Lafayette, 3/6/24
Caused Turnovers	11, Madison Hranicka, vs. Lafayette, 3/6/24
Turnovers	7, Mia DeRuggiero, vs. Duquesne, 3/4/20
Draw Controls	15, Ella Rishko, at Towson, 4/13/25
Saves	18, Kate Brewster, at Rutgers, 2/15/20

opponent HIGHS AND LOWS

GAME HIGHS	2026	ALTIG ERA
Goals	15, vs. Navy (2/18/26)	20, 2x, last at Drexel (5/1/25)
Goals in a Quarter	6, Q4, at Temple (2/6/26)	9, Q3 vs. Stony Brook (5/4/23)
1H Goals	9, vs. Navy (2/18/26)	12, 3x, at Drexel (5/1/25)
2H Goals	9, at Temple (2/6/26)	11, 4x, last vs. Stony Brook (5/4/23)
Shots Attempted	30, vs. Navy (2/18/26)	46, vs. Hofstra (4/14/24)
Shots on Goal	21, vs. Navy (2/18/26)	36, at Maryland (3/1/22)
Ground Balls	18, at Temple (2/6/26)	30, vs. William & Mary (4/9/22)
Draw Controls	16, at Georgetown (3/7/26)	28, vs. Georgetown (3/8/25)
Turnovers	22, vs. Rutgers (2/13/26)	34, vs. Lafayette (3/6/24)
Caused Turnovers	15, at Temple (2/6/26)	19, vs. Lafayette (3/6/24)
Saves	12, vs. UMBC (3/4/26)	20, 2x, last at Old Dominion (3/26/22)
Clears	18, at Georgetown (3/7/26)	26, vs. Towson (3/24/24)

GAME LOWS	2026	ALTIG ERA
Goals	3, at Austin Peay (3/19/26)	3, 2x, last at Austin Peay (3/19/26)
Goals in a Quarter	0, 7x, last Q4 at Lindenwood (3/21/26)	0, 27x, last Q4 at Lindenwood (3/21/26)
1H Goals	0, at Austin Peay (3/19/26)	0, at Austin Peay (3/19/26)
2H Goals	0, vs. Mount St. Mary's (3/14/26)	0, 2x, last vs. Mount St. Mary's (3/14/26)
Shots Attempted	7, at Austin Peay (3/19/26)	7, at Austin Peay (3/19/26)
Shots on Goal	7, at Austin Peay (3/19/26)	6, 2x, last vs. Lafayette (3/6/24)
Ground Balls	10, 2x, last at Austin Peay (3/19/26)	6, at Campbell (4/11/25)
Draw Controls	7, vs. UMBC (3/4/26)	2, vs. Towson (3/24/24)
Turnovers	8, vs. Navy (2/18/26)	7, at Stony Brook (3/18/23)
Caused Turnovers	3, at Austin Peay (3/19/26)	2, at Drexel (3/30/22)
Saves	3, at Georgetown (3/7/26)	2, at Stony Brook (4/6/24)
Clears	7, at Lindenwood (3/21/26)	7, 2x, last at Lindenwood (3/21/26)

DELAWARE SINGLE GAME RECORDS

	INDIVIDUAL	TEAM
Goals	11, Ann Pasquariello, vs. Hofstra, 5/12/79	36, vs. Towson State, 4/24/86
Assists	9, 2x, last Mia DeRuggiero vs. Oregon 3/27/19	18, vs. Hofstra, 4/22/90
Points	16, Karen Emas, vs. Bucknell, 4/17/84	49, vs. Towson State, 4/24/86
Shots Attempted	--	65, vs. Towson State, 4/24/86
Shots on Goal	8, 3x, last Lizzie Hsu, at Hofstra, 4/8/23	36, vs. Delaware State, 2/24/21
Ground Balls	17, Lisa Blanc, vs. Lehigh, 5/8/83	88, vs. Bucknell, 4/18/87
Caused Turnovers	11, Madison Hranicka, vs. Lafayette, 3/6/24	26, vs. Lafayette, 3/6/24
Draw Controls	15, Ella Rishko, at Towson, 4/13/25	26, vs. Old Dominion, 2/25/23
Saves	36, Lisa McBeth, at West Chester, 5/5/78	36, vs. West Chester, 5/5/78

delaware SEASON STATS

2026 University of Delaware Women's Lacrosse Overall Statistics (as of Mar 22, 2026)

Record:	Overall	Home	Away	Neutral
All Games	5-4	2-2	3-2	0-0
Conference	2-0	0-0	2-0	0-0
Non-Conference	3-4	2-2	1-2	0-0

Date	Opponent	WL	Score	Att.
2/06/26	at Temple	L	10-12	248
2/13/26	RUTGERS	L	4-12	293
2/18/26	NAVY	L	10-15	274
3/04/26	UMBC	W	16-8	219
3/07/26	at Georgetown	L	8-9	617
3/11/26	at Drexel	W	13-6	300
3/14/26	MOUNT ST. MARY'S	W	17-5	563
3/19/26	at Austin Peay	W	19-3	98
3/21/26	at Lindenwood (Mo)	W	25-7	146

Team Statistics	DELAWARE	OPP
SHOT STATISTICS		
Goals-Shot Att.	122-264	77-184
Goals Per Game	13.56	8.56
Shot Pct.	.462	.418
Shots on Goal-Att.	189-264	141-184
SOG Pct.	.716	.766
Shots/Game	29.3	20.4
Assists	74	46
FREE POSITION OPPORTUNITIES		
Free Position Made-Att.	19-42	18-39
Free Position pct.	.452	.462
GOAL BREAKDOWN		
Total Goals	122	77
Free Position	19	18
Unassisted	48	31
Overtime	0	0
Goals Scored Avg	13.56	8.56
GROUND BALLS	143	127
DRAW CONTROLS	113	98
TURNOVERS	125	139
CAUSED TURNOVERS	92	72
CLEARs	143-163	130-156
Clear Pct.	.877	.833
SHOT CLOCK VIOLATIONS	5	4
ATTENDANCE		
Total	1,349	1,409
Dates-Avg Per Date	4/337	5/282
Neutral Site #-Avg	0/	

#	Player	GP	G	A	PTS	SH	GW	GB	DC	TO	CT	FOULS
32	Rishko, Ella	9	25	8	33	56	0	11	43	13	11	1
14	Muscolino, Sophia	6	9	18	27	19	0	5	0	8	0	0
8	Marszal, Jaclyn	9	10	16	26	28	0	8	1	23	2	0
34	Sturtevant, Riley	9	12	5	17	20	2	6	0	4	9	2
17	Gore, Morgan	8	14	2	16	27	0	2	10	11	4	4
10	Didio, McKenzie	8	11	1	12	18	1	2	0	1	0	0
2	Buono, Grayson	8	7	5	12	13	0	1	3	2	3	1
16	Drab, Callie	9	5	6	11	10	0	7	0	14	0	2
19	Porter, Maggie	9	7	3	10	21	0	2	0	8	3	1
23	Rishko, Lulu	9	8	1	9	29	2	9	5	7	5	2
13	Craytor, Maggie	9	6	3	9	7	0	3	0	1	0	0
33	O'Donnell, Sydney	9	5	1	6	11	0	4	0	2	4	3
7	Ciufo, Julia	6	2	3	5	3	0	4	0	1	2	0
15	MacMurray, Meg	3	1	1	2	1	0	0	0	0	0	0
29	Radziul, Kennedy	9	0	1	1	0	0	21	0	3	17	11
9	Baseggio, Kat	9	0	0	0	0	0	17	0	6	11	7
41	Baumgratz, Molly	9	0	0	0	0	0	0	33	2	2	1
37	Didio, Mia	1	0	0	0	0	0	0	0	0	0	0
28	Farragher, Maggie	9	0	0	0	0	0	10	1	1	10	8
40	Marszal, Steph	9	0	0	0	0	0	14	0	1	1	0
22	Matey, Mary	9	0	0	0	1	0	7	12	4	2	5
21	Mercer, Kate	4	0	0	0	0	0	0	0	1	0	0
18	Stolarick, Lena	9	0	0	0	0	0	10	2	4	6	4
TM	Team	9	0	0	0	0	0	0	3	8	0	0
Totals		9	122	74	196	264	5	143	113	125	92	52
Opponents		9	77	46	123	184	4	127	98	139	72	59

#	Goalie	GP	MIN	GA	GAA	SAVE	PCT	W-L-T
40	Marszal, Steph	9	540:00	77	8.56	64	.454	5-4-0
Totals		9	540:00	77	8.56	64	.454	5-4-0
Opponents		13	540:00	122	13.56	67	.354	4-5-0

Goals by Period	1st	2nd	3rd	4th	Total
Delaware	30	34	25	33	122
Opponents	20	20	18	19	77

Saves by Period	1st	2nd	3rd	4th	Total
Delaware	17	15	15	17	64
Opponents	17	20	16	14	67

Shots by Period	1st	2nd	3rd	4th	Total
Delaware	61	77	60	66	264
Opponents	45	45	47	47	184

Shot on Goal	1st	2nd	3rd	4th	Total
Delaware	42	46	35	40	163
Opponents	31	27	29	29	116

delaware NCAA RANKINGS

Statistic	National Rank	Conference Rank	Value	National Leader	Value	Conference Leader	Value
Assists Per Game (120 ranked)	15	1	8.22	Johns Hopkins	10.00	Delaware	8.22
Assists Per Game (0 ranked)							
Caused Turnovers Per Game (120 ranked)	24	2	10.22	Liberty	16.33	Liberty	16.33
Clearing Percentage (120 ranked)	60	3	0.877	Florida	0.981	Jacksonville	0.916
Draw Control Percentage (120 ranked)	50	6	0.536	Villanova	0.680	Jacksonville	0.657
Draw Controls Per Game (119 ranked)	56	5	12.56	Dartmouth	18.33	Jacksonville Lindenwood	16.50 16.50
Face-Off Win Percentage (0 ranked)							
Fouls Per Game (120 ranked)	38	1	5.78	LIU	1.44	Delaware	5.78
Free Position Percentage (120 ranked)	63	5	0.452	Akron Cincinnati	0.667 0.667	Lindenwood	0.526
Ground Balls Per Game (120 ranked)	48	3	15.89	Liberty Wofford	21.78 21.78	Liberty	21.78
Points Per Game (120 ranked)	20	1	21.78	North Carolina	28.89	Delaware	21.78
Red Cards (1 ranked)				Longwood	1		
Saves Percentage (120 ranked)	33	2	0.454	Maryland	0.554	Coastal Carolina	0.470
Scoring Defense (120 ranked)	20	1	8.56	Yale	5.89	Delaware	8.56
Scoring Margin (69 ranked)	19	1	5.00	North Carolina	12.78	Delaware	5.00
Scoring Offense (120 ranked)	27	1	13.56	North Carolina	19.67	Delaware	13.56
Shot Percentage (120 ranked)	26	1	0.462	Stanford	0.555	Delaware	0.462
Shots Per Game (120 ranked)	37	3	29.33	North Carolina	38.00	Coastal Carolina	29.90
Shots on Goal Per Game (120 ranked)	42	3	21.00	North Carolina	28.22	Jacksonville	22.50
Turnovers Per Game (120 ranked)	58	2	13.89	East Carolina	8.00	Jacksonville	13.63
Win Percentage (117 ranked)	54	4	0.556	4 teams tied	1.000	Jacksonville	0.750
Yellow Cards (118 ranked)	114	9	7	Harvard Southern California Xavier	22 22 22	Coastal Carolina Kennesaw St.	17 17

delaware NCAA RANKINGS

Statistic	Player	National Rank	Conference Rank	Value	National Leader	Value	Conference Leader	Value
Assists (143 ranked)	Sophia Muscolino Jaelyn Marszal	42 61	2 4	18 16	Gracin Emerson, Duquesne	47	Luci Selander, Lindenwood	19
Assists Per Game (146 ranked)	Jaelyn Marszal	55	3	1.78	Gracin Emerson, Duquesne	5.22	Luci Selander, Lindenwood	1.90
Caused Turnovers Per Game (146 ranked)	Kennedy Radziul	37	3	1.89	Reagan O'Brien, Johns Hopkins	4.70	Lauren Dobbs, Kennesaw St.	2.40
Draw Controls Per Game (150 ranked)	Ella Rishko Molly Baumgratz	65 94	5 11	4.78 3.67	Anna Vigilone, Arizona St.	13.27	Abby Moran, Jacksonville	12.38
Face-Off Win Percentage (0 ranked)								
Free Position Goals Per Game (144 ranked)	Morgan Gore	122	8	0.50	Caroline Keil, Denver	1.44	Sophia Nesci, Liberty	0.89
Free Position Percentage (124 ranked)					Grace Lydon, UMass Lowell Kate Quinn, Drexel	0.889 0.889	Sophia Nesci, Liberty	0.727
Goals (149 ranked)	Ella Rishko	64	4	25	Grace Curry, George Washington	52	Lauryn Warfield, Austin Peay	28
Goals Per Game (144 ranked)	Ella Rishko	51	3	2.78	Chloe Humphrey, North Carolina	5.11	Kayleen Favreau, Queens (NC)	2.89
Goals-Against Average (115 ranked)	Steph Marszal	15	1	8.56	Niamh Pfaff, Yale	6.14	Steph Marszal, Delaware	8.56
Ground Balls Per Game (144 ranked)	Kennedy Radziul	60	5	2.33	Brooke Meltcher, Wofford	5.89	Maddie Eckert, Stetson	2.89
Points (141 ranked)	Ella Rishko	99	6	33	Paige Selhorn, Cincinnati	75	Luci Selander, Lindenwood	44
Points Per Game (148 ranked)	Ella Rishko	82	6	3.67	Chloe Humphrey, North Carolina	7.33	Luci Selander, Lindenwood	4.40
Save Percentage (115 ranked)	Steph Marszal	37	3	0.454	JJ Suriano, Maryland	0.551	Charlotte Sadler, Coastal Carolina	0.472
Saves (147 ranked)	Steph Marszal	70	5	64	Haley Richards, Louisville	124	Maddie Eckert, Stetson	79
Saves Per Game (115 ranked)	Steph Marszal	62	5	7.11	Haley Richards, Louisville	12.40	Maddie Eckert, Stetson	8.78
Shot Percentage (148 ranked)	Morgan Gore	75	6	0.519	Emma Raines, Duquesne	0.743	Sophia Nesci, Liberty	0.600
Shots Per Game (146 ranked)	Ella Rishko	45	2	6.22	Chloe Humphrey, North Carolina	10.56	Kayleen Favreau, Queens (NC)	7.22
Shots on Goal Per Game (150 ranked)	Ella Rishko	49	4	4.44	Chloe Humphrey, North Carolina	7.78	Kayleen Favreau, Queens (NC)	5.11

#1 STELLA STOLARICK | A | SO. | HADDONFIELD, N.J.

CAREER-HIGHS		SEASON-HIGHS	
GOALS	N/A	GOALS	N/A
ASSISTS	N/A	ASSISTS	N/A
POINTS	N/A	POINTS	N/A
SHOTS ON GOAL	N/A	SHOTS ON GOAL	N/A
GROUND BALLS	N/A	GROUND BALLS	N/A
CAUSED TURNOVERS	N/A	CAUSED TURNOVERS	N/A
DRAW CONTROLS	N/A	DRAW CONTROLS	N/A

CAREER STATS								
YEAR	GP/GS	G	A	PTS	SOG	GB	CT	DC
2025	0/0	0	0	0	0	0	0	0
2026	0/0	0	0	0	0	0	0	0
TOTAL	0/0	0	0	0	0	0	0	0

#2 GRAYSON BUONO | A | SO. | WAYNE, PA.

CAREER-HIGHS		SEASON-HIGHS	
GOALS	5, at Lindenwood, 3/21/26	GOALS	5, at Lindenwood, 3/21/26
ASSISTS	2, at Austin Peay, 3/19/26	ASSISTS	2, at Austin Peay, 3/19/26
POINTS	5, at Lindenwood, 3/21/26	POINTS	5, at Lindenwood, 3/21/26
SHOTS ON GOAL	5, at Lindenwood, 3/21/26	SHOTS ON GOAL	5, at Lindenwood, 3/21/26
GROUND BALLS	1, vs. Mount St. Mary's, 3/14/26	GROUND BALLS	1, vs. Mount St. Mary's, 3/14/26
CAUSED TURNOVERS	2, at Austin Peay, 3/19/26	CAUSED TURNOVERS	2, at Austin Peay, 3/19/26
DRAW CONTROLS	5, vs. Stony Brook, 3/23/25	DRAW CONTROLS	1, vs. Rutgers, 2/13/26

CAREER STATS								
YEAR	GP/GS	G	A	PTS	SOG	GB	CT	DC
2025	13/2	0	0	0	0	0	1	21
2026	8/0	7	5	12	10	1	3	3
TOTAL	21/2	7	5	12	10	1	4	24

#3 LARA HOEFELICH | D | SO. | GLENELG, MD.

CAREER-HIGHS		SEASON-HIGHS	
GOALS	N/A	GOALS	N/A
ASSISTS	N/A	ASSISTS	N/A
POINTS	N/A	POINTS	N/A
SHOTS ON GOAL	N/A	SHOTS ON GOAL	N/A
GROUND BALLS	N/A	GROUND BALLS	N/A
CAUSED TURNOVERS	1, vs. Temple, 2/7/25	CAUSED TURNOVERS	N/A
DRAW CONTROLS	N/A	DRAW CONTROLS	N/A

CAREER STATS								
YEAR	GP/GS	G	A	PTS	SOG	GB	CT	DC
2025	2/0	0	0	0	0	0	1	0
2026	0/0	0	0	0	0	0	0	0
TOTAL	2/0	0	0	0	0	0	1	0

#4 MARIN MOONEY | A | FR. | VILLANOVA, PA.

CAREER-HIGHS		SEASON-HIGHS	
GOALS	N/A	GOALS	N/A
ASSISTS	N/A	ASSISTS	N/A
POINTS	N/A	POINTS	N/A
SHOTS ON GOAL	N/A	SHOTS ON GOAL	N/A
GROUND BALLS	N/A	GROUND BALLS	N/A
CAUSED TURNOVERS	N/A	CAUSED TURNOVERS	N/A
DRAW CONTROLS	N/A	DRAW CONTROLS	N/A

CAREER STATS								
YEAR	GP/GS	G	A	PTS	SOG	GB	CT	DC
2026	0/0	0	0	0	0	0	0	0
TOTAL	0/0	0	0	0	0	0	0	0

#6 JENNY GREEN | D | FR. | GARNET VALLEY, PA.

CAREER-HIGHS		SEASON-HIGHS	
GOALS	N/A	GOALS	N/A
ASSISTS	N/A	ASSISTS	N/A
POINTS	N/A	POINTS	N/A
SHOTS ON GOAL	N/A	SHOTS ON GOAL	N/A
GROUND BALLS	N/A	GROUND BALLS	N/A
CAUSED TURNOVERS	N/A	CAUSED TURNOVERS	N/A
DRAW CONTROLS	N/A	DRAW CONTROLS	N/A

CAREER STATS								
YEAR	GP/GS	G	A	PTS	SOG	GB	CT	DC
2026	0/0	0	0	0	0	0	0	0
TOTAL	0/0	0	0	0	0	0	0	0

#7 JULIA CIUFO | M | JR. | REISTERSTOWN, MD.

CAREER-HIGHS		SEASON-HIGHS	
GOALS	1, 3x, last at Austin Peay, 3/19/26	GOALS	1, 2x, last at Austin Peay, 3/19/26
ASSISTS	1, 3x, last vs. Mount St. Mary's, 3/14/26	ASSISTS	1, 3x, last vs. Mount St. Mary's, 3/14/26
POINTS	2, vs. Mount St. Mary's, 3/14/26	POINTS	2, vs. Mount St. Mary's, 3/14/26
SHOTS ON GOAL	1, 5x, last at Austin Peay, 3/19/26	SHOTS ON GOAL	1, 2x, last at Austin Peay, 3/19/26
GROUND BALLS	3, at Temple, 2/21/24	GROUND BALLS	1, 4x, last at Austin Peay, 3/19/26
CAUSED TURNOVERS	1, 4x, last at Lindenwood, 3/21/26	CAUSED TURNOVERS	1, 2x, last at Lindenwood, 3/21/26
DRAW CONTROLS	N/A	DRAW CONTROLS	N/A

CAREER STATS								
YEAR	GP/GS	G	A	PTS	SOG	GB	CT	DC
2024	4/0	1	0	1	3	4	2	0
2025	0/0	0	0	0	0	0	0	0
2026	6/0	2	3	5	2	4	2	0
TOTAL	10/0	3	3	6	5	8	4	0

#8 JACLYN MARSZAL | A | SR. | CATONSVILLE, MD.

CAREER-HIGHS		SEASON-HIGHS	
GOALS	5, at Lehigh, 2/9/24	GOALS	4, at Austin Peay, 3/19/26
ASSISTS	6, 2x, last at Lindenwood, 3/21/26	ASSISTS	6, at Lindenwood, 3/21/26
POINTS	9, at William & Mary, 3/30/24	POINTS	8, at Lindenwood, 3/21/26
SHOTS ON GOAL	6, 2x, last vs. Drexel, 3/21/25	SHOTS ON GOAL	5, at Austin Peay, 3/19/26
GROUND BALLS	4, 2x, last at Mount St. Mary's, 2/22/25	GROUND BALLS	2, 3x, last at Lindenwood, 3/21/26
CAUSED TURNOVERS	1, 7x, last at Lindenwood, 3/21/26	CAUSED TURNOVERS	1, 2x, last at Lindenwood, 3/21/26
DRAW CONTROLS	1, 3x, last at Lindenwood, 3/21/26	DRAW CONTROLS	1, at Lindenwood, 3/21/26

CAREER STATS								
YEAR	GP/GS	G	A	PTS	SOG	GB	CT	DC
2023*	5/0	2	0	2	3	0	0	0
2024	16/15	25	22	47	36	19	4	2
2025	16/8	21	29	50	44	14	1	0
2026	9/8	10	16	26	20	8	2	1
UD	41/31	56	67	123	100	41	7	3
TOTAL	46/31	58	67	125	103	41	7	3

* at Notre Dame

#9 KAT BASEGGIO | D | JR. | GUILFORD, CONN.

CAREER-HIGHS		SEASON-HIGHS	
GOALS	N/A	GOALS	N/A
ASSISTS	N/A	ASSISTS	N/A
POINTS	N/A	POINTS	N/A
SHOTS ON GOAL	N/A	SHOTS ON GOAL	N/A
GROUND BALLS	5, vs. Rutgers, 2/13/26	GROUND BALLS	5, vs. Rutgers, 2/13/26
CAUSED TURNOVERS	4, 2x, last vs. Rutgers, 2/13/26	CAUSED TURNOVERS	4, vs. Rutgers, 2/13/26
DRAW CONTROLS	1, vs. Princeton, 2/26/25	DRAW CONTROLS	N/A

CAREER STATS								
YEAR	GP/GS	G	A	PTS	SOG	GB	CT	DC
2024	16/15	0	0	0	0	14	5	0
2025	16/16	0	0	0	0	29	23	1
2026	9/9	0	0	0	0	17	11	0
TOTAL	41/40	0	0	0	0	60	39	1

#10 MCKENZIE DIDIO | A | SR. | WESTPORT, CONN.

CAREER-HIGHS		SEASON-HIGHS	
GOALS	2, 7x, last at Austin Peay, 3/19/26	GOALS	2, 4x, last at Austin Peay, 3/19/26
ASSISTS	1, at Drexel, 3/11/26	ASSISTS	1, at Drexel, 3/11/26
POINTS	3, at Drexel, 3/11/26	POINTS	3, at Drexel, 3/11/26
SHOTS ON GOAL	5, vs. Old Dominion, 2/25/23	SHOTS ON GOAL	3, at Austin Peay, 3/19/26
GROUND BALLS	1, 4x, last at Austin Peay, 3/19/26	GROUND BALLS	1, 2x, last at Austin Peay, 3/19/26
CAUSED TURNOVERS	N/A	CAUSED TURNOVERS	N/A
DRAW CONTROLS	N/A	DRAW CONTROLS	N/A

CAREER STATS								
YEAR	GP/GS	G	A	PTS	SOG	GB	CT	DC
2023	16/1	10	0	10	23	1	0	0
2024	9/0	5	0	5	8	1	0	0
2025	2/0	0	0	0	0	0	0	0
2026	8/0	11	1	12	14	2	0	0
TOTAL	35/1	26	1	27	45	4	0	0

#11 JULIA REAGAN | M | SR. | EAST ATLANTIC BEACH, N.Y.

CAREER-HIGHS		SEASON-HIGHS	
GOALS	N/A	GOALS	N/A
ASSISTS	N/A	ASSISTS	N/A
POINTS	N/A	POINTS	N/A
SHOTS ON GOAL	N/A	SHOTS ON GOAL	N/A
GROUND BALLS	N/A	GROUND BALLS	N/A
CAUSED TURNOVERS	N/A	CAUSED TURNOVERS	N/A
DRAW CONTROLS	N/A	DRAW CONTROLS	N/A
	1, at Denver, 3/13/23		N/A

CAREER STATS								
YEAR	GP/GS	G	A	PTS	SOG	GB	CT	DC
2023	1/0	0	0	0	0	0	0	1
2024	1/0	0	0	0	0	0	0	0
2025	0/0	0	0	0	0	0	0	0
2026	0/0	0	0	0	0	0	0	0
TOTAL	2/0	0	0	0	0	0	0	1

#12 ERIN HUSSEY | M | FR. | SEVERNA PARK, MD.

CAREER-HIGHS		SEASON-HIGHS	
GOALS	N/A	GOALS	N/A
ASSISTS	N/A	ASSISTS	N/A
POINTS	N/A	POINTS	N/A
SHOTS ON GOAL	N/A	SHOTS ON GOAL	N/A
GROUND BALLS	N/A	GROUND BALLS	N/A
CAUSED TURNOVERS	N/A	CAUSED TURNOVERS	N/A
DRAW CONTROLS	N/A	DRAW CONTROLS	N/A

CAREER STATS								
YEAR	GP/GS	G	A	PTS	SOG	GB	CT	DC
2026	0/0	0	0	0	0	0	0	0
TOTAL	0/0	0	0	0	0	0	0	0

#13 MAGGIE CRAYTOR | A | SO. | CHARLOTTESVILLE, VA.

CAREER-HIGHS		SEASON-HIGHS	
GOALS	3, 2x, last at Lindenwood, 3/21/26	GOALS	3, at Lindenwood, 3/21/26
ASSISTS	2, vs. UMBC, 3/4/26	ASSISTS	2, vs. UMBC, 3/4/26
POINTS	4, at Lindenwood, 3/21/26	POINTS	4, at Lindenwood, 3/21/26
SHOTS ON GOAL	3, 3x, last at Lindenwood, 3/21/26	SHOTS ON GOAL	3, at Lindenwood, 3/21/26
GROUND BALLS	2, at Austin Peay, 3/19/26	GROUND BALLS	2, at Austin Peay, 3/19/26
CAUSED TURNOVERS	1, vs. Temple, 2/7/25	CAUSED TURNOVERS	N/A
DRAW CONTROLS	N/A	DRAW CONTROLS	N/A

CAREER STATS								
YEAR	GP/GS	G	A	PTS	SOG	GB	CT	DC
2025	7/0	5	0	5	10	1	1	0
2026	9/0	6	3	9	7	3	0	0
TOTAL	16/0	11	3	14	17	4	1	0

#14 SOPHIA MUSCOLINO | A | JR. | BALDWINVILLE, N.Y.

CAREER-HIGHS	SEASON-HIGHS
GOALS 3, at Lindenwood, 3/21/26	GOALS 3, at Lindenwood, 3/21/26
ASSISTS 5, vs. Mount St. Mary's, 3/14/26	ASSISTS 5, vs. Mount St. Mary's, 3/14/26
POINTS 7, 2x, last at Lindenwood, 3/21/26	POINTS 7, 2x, last at Lindenwood, 3/21/26
SHOTS ON GOAL 3, 3x, last at Lindenwood, 3/21/26	SHOTS ON GOAL 3, 3x, last at Lindenwood, 3/21/26
GROUND BALLS 2, 2x, last at Austin Peay, 3/19/26	GROUND BALLS 2, 2x, last at Austin Peay, 3/19/26
CAUSED TURNOVERS N/A	CAUSED TURNOVERS N/A
DRAW CONTROLS N/A	DRAW CONTROLS N/A

CAREER STATS								
YEAR	GP/GS	G	A	PTS	SOG	GB	CT	DC
2024	8/0	2	1	3	2	2	0	0
2025	10/0	2	0	2	4	1	0	0
2026	6/6	9	18	27	13	5	0	0
TOTAL	24/6	13	19	32	19	8	0	0

#15 MEG MACMURRAY | A | SO. | CHESTER SPRINGS, PA.

CAREER-HIGHS	SEASON-HIGHS
GOALS 1, at Lindenwood, 3/21/26	GOALS 1, at Lindenwood, 3/21/26
ASSISTS 1, at Austin Peay, 3/19/26	ASSISTS 1, at Austin Peay, 3/19/26
POINTS 1, 2x, last at Lindenwood, 3/21/26	POINTS 1, 2x, last at Lindenwood, 3/21/26
SHOTS ON GOAL 1, at Lindenwood, 3/21/26	SHOTS ON GOAL 1, at Lindenwood, 3/21/26
GROUND BALLS N/A	GROUND BALLS N/A
CAUSED TURNOVERS N/A	CAUSED TURNOVERS N/A
DRAW CONTROLS N/A	DRAW CONTROLS N/A

CAREER STATS								
YEAR	GP/GS	G	A	PTS	SOG	GB	CT	DC
2025 *	0/0	0	0	0	0	0	0	0
2026	3/0	1	1	2	1	0	0	0
UD	3/0	1	1	2	1	0	0	0
TOTAL	3/0	1	1	2	1	0	0	0

* AT MARYLAND

#16 CALLIE DRAB | A | SR. | SUFFERN, N.Y.

CAREER-HIGHS	SEASON-HIGHS
GOALS 3, 2x, last vs. Wagner, 3/1/25	GOALS 2, vs. Navy 2/18/26
ASSISTS 3, at William & Mary, 3/30/24	ASSISTS 2, at Temple, 2/7/26
POINTS 5, at UMBC, 3/5/25	POINTS 3, at Temple, 2/7/26
SHOTS ON GOAL 4, 2x, last vs. Georgetown, 3/8/25	SHOTS ON GOAL 2, 2x, last vs. Navy 2/18/26
GROUND BALLS 3, 2x, last vs. Wagner, 3/1/25	GROUND BALLS 2, at Austin Peay, 3/19/26
CAUSED TURNOVERS 1, 4x, last vs. Wagner, 3/1/25	CAUSED TURNOVERS N/A
DRAW CONTROLS N/A	DRAW CONTROLS N/A

CAREER STATS								
YEAR	GP/GS	G	A	PTS	SOG	GB	CT	DC
2023	3/0	1	0	1	2	0	0	0
2024	16/0	13	9	22	17	7	2	0
2025	16/8	13	11	24	23	7	2	0
2026	9/2	5	6	11	7	7	0	0
TOTAL	44/10	32	26	58	49	21	4	0

#17 MORGAN GORE | M | SR. | CROFTON, MD.

CAREER-HIGHS	SEASON-HIGHS
GOALS 4, 2x, last at Austin Peay, 3/19/26	GOALS 4, at Austin Peay, 3/19/26
ASSISTS 1, 9x, last at Lindenwood, 3/21/26	ASSISTS 1, 2x, last at Lindenwood, 3/21/26
POINTS 5, 2x, last at Austin Peay, 3/19/26	POINTS 5, at Austin Peay, 3/19/26
SHOTS ON GOAL 6, vs. UMBC, 3/4/26	SHOTS ON GOAL 6, vs. UMBC, 3/4/26
GROUND BALLS 4, at Monmouth, 3/30/25	GROUND BALLS 1, 2x, last at Georgetown, 3/7/26
CAUSED TURNOVERS 2, 6x, last at Georgetown, 3/7/26	CAUSED TURNOVERS 2, at Georgetown, 3/7/26
DRAW CONTROLS 5, at Temple, 2/7/26	DRAW CONTROLS 5, at Temple, 2/7/26

CAREER STATS								
YEAR	GP/GS	G	A	PTS	SOG	GB	CT	DC
2023	16/1	15	4	19	19	11	2	9
2024	16/15	17	1	18	29	8	5	14
2025	16/15	30	2	32	43	20	10	15
2026	8/8	14	2	16	20	2	4	10
TOTAL	56/39	76	9	85	111	41	21	48

#18 LENA STOLARICK | D | SO. | HADDONFIELD, N.J.

CAREER-HIGHS		SEASON-HIGHS	
GOALS	N/A	GOALS	N/A
ASSISTS	N/A	ASSISTS	N/A
POINTS	N/A	POINTS	N/A
SHOTS ON GOAL	N/A	SHOTS ON GOAL	N/A
GROUND BALLS	4, vs. Princeton, 2/26/25	GROUND BALLS	2, 3x, last vs. Mount St. Mary's, 3/14/26
CAUSED TURNOVERS	3, vs. Princeton, 2/26/25	CAUSED TURNOVERS	2, at Drexel, 3/11/26
DRAW CONTROLS	2, at Towson, 4/13/25	DRAW CONTROLS	1, 2x, last at Lindenwood, 3/21/26

CAREER STATS								
YEAR	GP/GS	G	A	PTS	SOG	GB	CT	DC
2025	13/4	0	0	0	0	10	8	3
2026	9/9	0	0	0	0	10	6	2
TOTAL	22/13	0	0	0	0	20	14	5

#19 MAGGIE PORTER | A | FR. | STEVENSON, MD.

CAREER-HIGHS		SEASON-HIGHS	
GOALS	2, at Lindenwood, 3/21/26	GOALS	2, at Lindenwood, 3/21/26
ASSISTS	1, 3x, last at Georgetown, 3/7/26	ASSISTS	1, 3x, last at Georgetown, 3/7/26
POINTS	2, 2x, last at Lindenwood, 3/21/26	POINTS	2, 2x, last at Lindenwood, 3/21/26
SHOTS ON GOAL	3, vs. Rutgers, 2/13/26	SHOTS ON GOAL	3, vs. Rutgers, 2/13/26
GROUND BALLS	1, 2x, last at Lindenwood, 3/21/26	GROUND BALLS	1, 2x, last at Lindenwood, 3/21/26
CAUSED TURNOVERS	2, vs. Mount St. Mary's, 3/14/26	CAUSED TURNOVERS	2, vs. Mount St. Mary's, 3/14/26
DRAW CONTROLS	N/A	DRAW CONTROLS	N/A

CAREER STATS								
YEAR	GP/GS	G	A	PTS	SOG	GB	CT	DC
2026	9/2	7	3	10	13	2	3	0
TOTAL	9/2	7	3	10	13	2	3	0

#20 SAM PARADISE | M | JR. | PERRY HALL, MD.

CAREER-HIGHS		SEASON-HIGHS	
GOALS	4, vs. Georgetown, 3/8/25	GOALS	N/A
ASSISTS	2, vs. Temple, 2/7/25	ASSISTS	N/A
POINTS	4, vs. Georgetown, 3/8/25	POINTS	N/A
SHOTS ON GOAL	4, 3x, last vs. Georgetown, 3/8/25	SHOTS ON GOAL	N/A
GROUND BALLS	2, vs. Georgetown, 3/8/25	GROUND BALLS	N/A
CAUSED TURNOVERS	2, 2x, last vs. Georgetown, 3/8/25	CAUSED TURNOVERS	N/A
DRAW CONTROLS	9, vs. Temple, 2/7/25	DRAW CONTROLS	N/A

CAREER STATS								
YEAR	GP/GS	G	A	PTS	SOG	GB	CT	DC
2024	16/3	8	0	8	13	6	4	11
2025	9/9	12	2	14	21	5	4	29
2026	0/0	0	0	0	0	0	0	0
TOTAL	25/12	20	2	22	34	11	8	40

#21 KATE MERCER | D | SR. | KATONAH, N.Y.

CAREER-HIGHS		SEASON-HIGHS	
GOALS	N/A	GOALS	N/A
ASSISTS	N/A	ASSISTS	N/A
POINTS	N/A	POINTS	N/A
SHOTS ON GOAL	N/A	SHOTS ON GOAL	N/A
GROUND BALLS	N/A	GROUND BALLS	N/A
CAUSED TURNOVERS	N/A	CAUSED TURNOVERS	N/A
DRAW CONTROLS	3, 2x, last vs. Georgetown, 3/8/25	DRAW CONTROLS	N/A

CAREER STATS								
YEAR	GP/GS	G	A	PTS	SOG	GB	CT	DC
2023	2/0	0	0	0	0	0	0	0
2024	4/0	0	0	0	0	0	0	0
2025	7/0	0	0	0	0	0	0	8
2026	4/0	0	0	0	0	0	0	0
TOTAL	17/0	0	0	0	0	0	0	8

#22 MARY MATEY | D | JR. | PHOENIXVILLE, PA.

CAREER-HIGHS		SEASON-HIGHS	
GOALS	N/A	GOALS	N/A
ASSISTS	N/A	ASSISTS	N/A
POINTS	N/A	POINTS	N/A
SHOTS ON GOAL	N/A	SHOTS ON GOAL	N/A
GROUND BALLS	3, at Lindenwood, 3/21/26	GROUND BALLS	3, at Lindenwood, 3/21/26
CAUSED TURNOVERS	1, 3x, last at Georgetown, 3/7/26	CAUSED TURNOVERS	1, 2x, last at Georgetown, 3/7/26
DRAW CONTROLS	4, 2x, last at Lindenwood, 3/21/26	DRAW CONTROLS	4, 2x, last at Lindenwood, 3/21/26

CAREER STATS								
YEAR	GP/GS	G	A	PTS	SOG	GB	CT	DC
2024	0/0	0	0	0	0	0	0	0
2025	7/1	0	0	0	0	0	1	0
2026	9/9	0	0	0	0	7	2	12
TOTAL	16/10	0	0	0	0	7	3	12

#23 LULU RISHKO | M | SO. | REHOBOTH BEACH, DEL.

CAREER-HIGHS		SEASON-HIGHS	
GOALS	2, 5x, last vs. Mount St. Mary's, 3/14/26	GOALS	2, 3x, last vs. Mount St. Mary's, 3/14/26
ASSISTS	1, 5x, last vs. UMBC, 3/4/26	ASSISTS	1, vs. UMBC, 3/4/26
POINTS	3, 2x, last last vs. UMBC, 3/4/26	POINTS	3, vs. UMBC, 3/4/26
SHOTS ON GOAL	4, 2x, last vs. Mount St. Mary's, 3/14/26	SHOTS ON GOAL	4, 2x, last vs. Mount St. Mary's, 3/14/26
GROUND BALLS	4, at Monmouth, 3/30/25	GROUND BALLS	2, 3x, last at Drexel, 3/11/26
CAUSED TURNOVERS	2, 2x, last vs. Rutgers, 2/13/26	CAUSED TURNOVERS	2, vs. Rutgers, 2/13/26
DRAW CONTROLS	1, 5x, last at Austin Peay, 3/19/26	DRAW CONTROLS	1, 5x, last at Austin Peay, 3/19/26

CAREER STATS								
YEAR	GP/GS	G	A	PTS	SOG	GB	CT	DC
2025	14/0	7	4	11	10	13	7	0
2026	9/8	8	1	9	18	9	5	5
TOTAL	23/8	15	5	30	28	22	12	5

#24 KYLIE O'BRIEN | D | SO. | BERWYN, PA.

CAREER-HIGHS		SEASON-HIGHS	
GOALS	N/A	GOALS	N/A
ASSISTS	N/A	ASSISTS	N/A
POINTS	N/A	POINTS	N/A
SHOTS ON GOAL	N/A	SHOTS ON GOAL	N/A
GROUND BALLS	N/A	GROUND BALLS	N/A
CAUSED TURNOVERS	N/A	CAUSED TURNOVERS	N/A
DRAW CONTROLS	N/A	DRAW CONTROLS	N/A

CAREER STATS								
YEAR	GP/GS	G	A	PTS	SOG	GB	CT	DC
2025	0/0	0	0	0	0	0	0	0
2026	0/0	0	0	0	0	0	0	0
TOTAL	0/0	0	0	0	0	0	0	0

#25 AMANDA GAZELLE | M | FR. | ODENTON, MD.

CAREER-HIGHS		SEASON-HIGHS	
GOALS	N/A	GOALS	N/A
ASSISTS	N/A	ASSISTS	N/A
POINTS	N/A	POINTS	N/A
SHOTS ON GOAL	N/A	SHOTS ON GOAL	N/A
GROUND BALLS	N/A	GROUND BALLS	N/A
CAUSED TURNOVERS	N/A	CAUSED TURNOVERS	N/A
DRAW CONTROLS	N/A	DRAW CONTROLS	N/A

CAREER STATS								
YEAR	GP/GS	G	A	PTS	SOG	GB	CT	DC
2026	0/0	0	0	0	0	0	0	0
TOTAL	0/0	0	0	0	0	0	0	0

#26 ALISON SWARTOUT | M | SR. | CHARLOTTESVILLE, VA.

CAREER-HIGHS	SEASON-HIGHS
GOALS 1, vs. Campbell, 4/12/24	GOALS N/A
ASSISTS N/A	ASSISTS N/A
POINTS 1, vs. Campbell, 4/12/24	POINTS N/A
SHOTS ON GOAL 1, 3x, last vs. Campbell, 4/12/24	SHOTS ON GOAL N/A
GROUND BALLS 1, 2x, last vs. Monmouth, 4/27/24	GROUND BALLS N/A
CAUSED TURNOVERS N/A	CAUSED TURNOVERS N/A
DRAW CONTROLS 1, vs. Kent State, 2/25/24	DRAW CONTROLS N/A

CAREER STATS								
YEAR	GP/GS	G	A	PTS	SOG	GB	CT	DC
2023	2/0	0	0	0	0	0	0	0
2024	13/0	1	0	1	3	2	0	1
2025	0/0	0	0	0	0	0	0	0
2026	0/0	0	0	0	0	0	0	0
TOTAL	15/0	1	0	1	3	2	0	1

#27 MADDY MOBILIA | D | JR. | NEW ROCHELLE, N.Y.

CAREER-HIGHS	SEASON-HIGHS
GOALS N/A	GOALS N/A
ASSISTS N/A	ASSISTS N/A
POINTS N/A	POINTS N/A
SHOTS ON GOAL N/A	SHOTS ON GOAL N/A
GROUND BALLS 4, 2x, last vs. Georgetown, 3/8/25	GROUND BALLS N/A
CAUSED TURNOVERS 3, vs. Temple, 2/7/25	CAUSED TURNOVERS N/A
DRAW CONTROLS 2, vs. Georgetown, 3/8/25	DRAW CONTROLS N/A

CAREER STATS								
YEAR	GP/GS	G	A	PTS	SOG	GB	CT	DC
2024	16/15	0	0	0	0	12	8	2
2025	16/16	0	0	0	0	16	16	5
2026	0/0	0	0	0	0	0	0	0
TOTAL	32/31	0	0	0	0	28	24	7

#28 MAGGIE FARRAGHER | D | SR. | EVANSTON, ILL.

CAREER-HIGHS	SEASON-HIGHS
GOALS N/A	GOALS N/A
ASSISTS N/A	ASSISTS N/A
POINTS N/A	POINTS N/A
SHOTS ON GOAL N/A	SHOTS ON GOAL N/A
GROUND BALLS 3, 4x, last vs. UMBC, 3/4/26	GROUND BALLS 3, vs. UMBC, 3/4/26
CAUSED TURNOVERS 4, vs. Rutgers, 2/13/26	CAUSED TURNOVERS 4, vs. Rutgers, 2/13/26
DRAW CONTROLS 4, vs. Lafayette, 2/15/23	DRAW CONTROLS 1, vs. Navy 2/18/26

CAREER STATS								
YEAR	GP/GS	G	A	PTS	SOG	GB	CT	DC
2023	11/1	0	0	0	0	0	1	12
2024	16/15	0	0	0	0	12	13	3
2025	15/15	0	0	0	0	20	13	0
2026	9/9	0	0	0	0	10	10	1
TOTAL	51/40	0	0	0	0	42	37	16

#29 KENNEDY RADZIUL | D | SO. | NORTHPORT, N.Y.

CAREER-HIGHS	SEASON-HIGHS
GOALS N/A	GOALS N/A
ASSISTS 1, at Lindenwood, 3/21/26	ASSISTS 1, at Lindenwood, 3/21/26
POINTS 1, at Lindenwood, 3/21/26	POINTS 1, at Lindenwood, 3/21/26
SHOTS ON GOAL N/A	SHOTS ON GOAL N/A
GROUND BALLS 4, 4x, last at Drexel, 3/11/26	GROUND BALLS 4, 3x, last at Drexel, 3/11/26
CAUSED TURNOVERS 5, at Drexel, 3/11/26	CAUSED TURNOVERS 5, at Drexel, 3/11/26
DRAW CONTROLS 1, vs. Wagner, 3/1/25	DRAW CONTROLS N/A

CAREER STATS								
YEAR	GP/GS	G	A	PTS	SOG	GB	CT	DC
2025	15/11	0	0	0	0	20	12	1
2026	9/9	0	1	1	0	21	17	0
TOTAL	24/20	0	1	1	0	41	29	1

#30 MARINA MERSCH | GK | FR. | MEDIA, PA.

CAREER-HIGHS		SEASON-HIGHS	
FEWEST GOALS ALLOWED [^]	N/A	FEWEST GOALS ALLOWED [^]	N/A
SAVES	N/A	SAVES	N/A
SHOTS FACED	N/A	SHOTS FACED	N/A
SAVE PERCENTAGE [^]	N/A	SAVE PERCENTAGE [^]	N/A

^ MIN. 30 MINUTES PLAYED

CAREER STATS							
YEAR	GP/GS	W-L	GA	GAA	SV	SF	SV%
2026	0/0	0-0	0	0.00	0	0	.000
TOTAL	0/0	0-0	0	0.00	0	0	.000

#31 MADDIE GEORGE | GK | SO. | CENTREVILLE, MD.

CAREER-HIGHS		SEASON-HIGHS	
FEWEST GOALS ALLOWED [^]	N/A	FEWEST GOALS ALLOWED [^]	N/A
SAVES	N/A	SAVES	N/A
SHOTS FACED	N/A	SHOTS FACED	N/A
SAVE PERCENTAGE [^]	N/A	SAVE PERCENTAGE [^]	N/A

^ MIN. 30 MINUTES PLAYED

CAREER STATS							
YEAR	GP/GS	W-L	GA	GAA	SV	SF	SV%
2025	0/0	0-0	0	0.00	0	0	.000
2026	0/0	0-0	0	0.00	0	0	.000
TOTAL	0/0	0-0	0	0.00	0	0	.000

#32 ELLA RISHKO | A | SR. | REHOBOTH BEACH, DEL.

CAREER-HIGHS		SEASON-HIGHS	
GOALS	7, 2x, last vs. Pittsburgh, 4/23/23	GOALS	4, 3x, last vs. Mount St. Mary's, 3/14/26
ASSISTS	4, vs. Mount St. Mary's, 3/14/26	ASSISTS	4, vs. Mount St. Mary's, 3/14/26
POINTS	8, 2x, last vs. Mount St. Mary's, 3/14/26	POINTS	8, vs. Mount St. Mary's, 3/14/26
SHOTS ON GOAL	9, vs. Louisville, 4/8/23	SHOTS ON GOAL	6, 3x, last vs. UMBC, 3/4/26
GROUND BALLS	4, vs. Pittsburgh, 4/23/23	GROUND BALLS	3, at Temple, 2/7/26
CAUSED TURNOVERS	4, vs. Pittsburgh, 4/23/23	CAUSED TURNOVERS	2, 3x, last vs. Mount St. Mary's, 3/14/26
DRAW CONTROLS	15, at Towson, 4/13/25	DRAW CONTROLS	9, 2x, last vs. Navy 2/18/26

CAREER STATS								
YEAR	GP/GS	G	A	PTS	SOG	GB	CT	DC
2023 *	18/16	44	6	50	68	18	12	22
2024 *	14/8	17	8	25	34	14	7	16
2025	16/16	36	9	45	65	16	14	55
2026	9/9	25	8	33	40	11	11	43
UD	25/25	61	17	78	105	27	25	98
TOTAL	57/49	122	31	153	207	59	44	136

* AT VIRGINIA TECH

#33 SYDNEY O'DONNELL | M | SO. | DOWNINGTOWN, PA.

CAREER-HIGHS		SEASON-HIGHS	
GOALS	2, at Lindenwood, 3/21/26	GOALS	2, at Lindenwood, 3/21/26
ASSISTS	1, at Drexel, 3/11/26	ASSISTS	1, at Drexel, 3/11/26
POINTS	2, 2x, last at Lindenwood, 3/21/26	POINTS	2, 2x, last at Lindenwood, 3/21/26
SHOTS ON GOAL	2, 2x, last at Lindenwood, 3/21/26	SHOTS ON GOAL	2, 2x, last at Lindenwood, 3/21/26
GROUND BALLS	1, 4x, last at Austin Peay, 3/19/26	GROUND BALLS	1, 4x, last at Austin Peay, 3/19/26
CAUSED TURNOVERS	3, vs. Rutgers, 2/13/26	CAUSED TURNOVERS	3, vs. Rutgers, 2/13/26
DRAW CONTROLS	N/A	DRAW CONTROLS	N/A

CAREER STATS								
YEAR	GP/GS	G	A	PTS	SOG	GB	CT	DC
2025	0/0	0	0	0	0	0	0	0
2026	9/0	5	1	6	6	4	4	0
TOTAL	9/0	5	1	6	6	4	4	0

#34 RILEY STURTEVANT | M | SR. | SPRINGFIELD, VA.

CAREER-HIGHS	
GOALS	3, 2x, last at Lindenwood, 3/21/26
ASSISTS	2, 2x, last at Lindenwood, 3/21/26
POINTS	5, at Lindenwood, 3/21/26
SHOTS ON GOAL	4, at Drexel, 3/11/26
GROUND BALLS	3, 2x, last at Drexel, 3/11/26
CAUSED TURNOVERS	2, 2x, last vs. Mount St. Mary's, 3/14/26
DRAW CONTROLS	N/A

SEASON-HIGHS	
GOALS	3, 2x, last at Lindenwood, 3/21/26
ASSISTS	2, 2x, last at Lindenwood, 3/21/26
POINTS	5, at Lindenwood, 3/21/26
SHOTS ON GOAL	4, at Drexel, 3/11/26
GROUND BALLS	3, at Drexel, 3/11/26
CAUSED TURNOVERS	2, 2x, last vs. Mount St. Mary's, 3/14/26
DRAW CONTROLS	N/A

CAREER STATS								
YEAR	GP/GS	G	A	PTS	SOG	GB	CT	DC
2023	0/0	0	0	0	0	0	0	0
2024	8/0	2	0	2	4	2	0	0
2025	16/9	13	2	15	19	11	6	0
2026	9/2	12	5	17	18	6	9	0
TOTAL	33/11	27	7	34	41	19	15	0

#35 NICHELLE DESBORDES | D | SO. | ELLICOTT CITY, MD.

CAREER-HIGHS	
GOALS	N/A
ASSISTS	N/A
POINTS	N/A
SHOTS ON GOAL	N/A
GROUND BALLS	N/A
CAUSED TURNOVERS	N/A
DRAW CONTROLS	N/A

SEASON-HIGHS	
GOALS	N/A
ASSISTS	N/A
POINTS	N/A
SHOTS ON GOAL	N/A
GROUND BALLS	N/A
CAUSED TURNOVERS	N/A
DRAW CONTROLS	N/A

CAREER STATS								
YEAR	GP/GS	G	A	PTS	SOG	GB	CT	DC
2025	0/0	0	0	0	0	0	0	0
2026	0/0	0	0	0	0	0	0	0
TOTAL	0/0	0	0	0	0	0	0	0

#37 MIA DIDIO | D | SR. | WESTPORT, CONN.

CAREER-HIGHS	
GOALS	N/A
ASSISTS	N/A
POINTS	N/A
SHOTS ON GOAL	N/A
GROUND BALLS	N/A
CAUSED TURNOVERS	N/A
DRAW CONTROLS	N/A

SEASON-HIGHS	
GOALS	N/A
ASSISTS	N/A
POINTS	N/A
SHOTS ON GOAL	N/A
GROUND BALLS	N/A
CAUSED TURNOVERS	N/A
DRAW CONTROLS	N/A

CAREER STATS								
YEAR	GP/GS	G	A	PTS	SOG	GB	CT	DC
2023	1/0	0	0	0	0	0	0	0
2024	0/0	0	0	0	0	0	0	0
2025	0/0	0	0	0	0	0	0	0
2026	1/0	0	0	0	0	0	0	0
TOTAL	2/0	0	0	0	0	0	0	0

#38 SADIE SCHULTZ | M | FR. | RIVERHEAD, N.Y.

CAREER-HIGHS	
GOALS	N/A
ASSISTS	N/A
POINTS	N/A
SHOTS ON GOAL	N/A
GROUND BALLS	N/A
CAUSED TURNOVERS	N/A
DRAW CONTROLS	N/A

SEASON-HIGHS	
GOALS	N/A
ASSISTS	N/A
POINTS	N/A
SHOTS ON GOAL	N/A
GROUND BALLS	N/A
CAUSED TURNOVERS	N/A
DRAW CONTROLS	N/A

CAREER STATS								
YEAR	GP/GS	G	A	PTS	SOG	GB	CT	DC
2026	0/0	0	0	0	0	0	0	0
TOTAL	0/0	0	0	0	0	0	0	0

#40 STEPH MARSZAL | GK | SR. | CATONSVILLE, MD.

CAREER-HIGHS	
FEWEST GOALS ALLOWED [^]	1, vs. Lafayette, 3/6/24
SAVES	14, at Lehigh, 2/9/24
SHOTS FACED	35 vs. Princeton, 2/26/25
SAVE PERCENTAGE [^]	.667, 4x, last at Wagner, 3/9/24

SEASON-HIGHS	
FEWEST GOALS ALLOWED [^]	3, at Austin Peay, 3/19/26
SAVES	10, 3x, last at Georgetown, 3/7/26
SHOTS FACED	30, vs. Navy, 2/18/26
SAVE PERCENTAGE [^]	.615, vs. Mount St. Mary's, 3/14/26

^ MIN. 30 MINUTES PLAYED

CAREER STATS							
YEAR	GP/GS	W-L	GA	GAA	SV	SF	SV%
2023	0/0	0-0	0	0.00	0	0	.000
2024	13/12	7-5	97	10.12	93	253	.489
2025	14/13	8-5	154	11.65	106	363	.408
2026	9/9	5-4	77	8.56	64	184	.454
TOTAL	36/34	20-14	328	10.31	263	800	.445

#41 MOLLY BAUMGRATZ | M | JR. | CHARLOTTE, N.C.

CAREER-HIGHS	
GOALS	N/A
ASSISTS	N/A
POINTS	N/A
SHOTS ON GOAL	N/A
GROUND BALLS	N/A
CAUSED TURNOVERS	1, 2x, last at Drexel, 3/11/26
DRAW CONTROLS	9, vs. Mount St. Mary's, 3/14/26

SEASON-HIGHS	
GOALS	N/A
ASSISTS	N/A
POINTS	N/A
SHOTS ON GOAL	N/A
GROUND BALLS	N/A
CAUSED TURNOVERS	1, 2x, last at Drexel, 3/11/26
DRAW CONTROLS	9, vs. Mount St. Mary's, 3/14/26

CAREER STATS								
YEAR	GP/GS	G	A	PTS	SOG	GB	CT	DC
2024	0/0	0	0	0	0	0	0	0
2025	12/5	0	0	0	0	0	0	14
2026	9/9	0	0	0	0	0	2	33
TOTAL	21/14	0	0	0	0	0	2	47

#42 ELLIE DASSOULAS | A | SR. | TOWSON, MD.

CAREER-HIGHS	
GOALS	N/A
ASSISTS	N/A
POINTS	N/A
SHOTS ON GOAL	N/A
GROUND BALLS	N/A
CAUSED TURNOVERS	N/A
DRAW CONTROLS	N/A

SEASON-HIGHS	
GOALS	N/A
ASSISTS	N/A
POINTS	N/A
SHOTS ON GOAL	N/A
GROUND BALLS	N/A
CAUSED TURNOVERS	N/A
DRAW CONTROLS	N/A

CAREER STATS								
YEAR	GP/GS	G	A	PTS	SOG	GB	CT	DC
2023	0/0	0	0	0	0	0	0	0
2024	0/0	0	0	0	0	0	0	0
2025	0/0	0	0	0	0	0	0	0
2026	0/0	0	0	0	0	0	0	0
TOTAL	0/0	0	0	0	0	0	0	0

DELAWARE TV/RADIO CHART



1

Stella Stolarick
Sophomore | A
Haddonfield, N.J.
Haddonfield Memorial
@stellastolarick



2

Grayson Buono
Sophomore | A
Wayne, Pa.
Radnor
@grayson.buono



3

Lara Hoeflich
Sophomore | D
Glenelg, Md.
Glenelg High School
@lara.hoeflich8



4

Marin Mooney
Freshman | A
Villanova, Pa.
Radnor
@_marinmooney



6

Jenny Green
Freshman | D
Garnet Valley, Pa.
Garnet Valley
@jenny_green



7

Julia Ciuffo
Junior | M
Reisterstown, Md.
Roland Park Country
@juliaciuffo



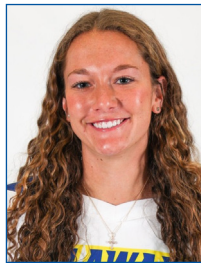
8

Jaclyn Marszal
Senior | A
Catonsville, Md.
Glenelg Country School (Notre Dame)
@jaclynmarszal



9

Kat Baseggio
Junior | D
Guilford, Conn.
Guilford
@katbaseggio



10

McKenzie Didio
Senior | A
Westport, Conn.
Staples
@mckenzieididio



11

Julia Reagan
Senior | M
East Atlantic Beach, N.Y.
Sacred Heart Academy
@juliareagannn



12

Erin Hussy
Freshman | M
Severna Park, Md.
Severna Park
@erin_huss7



13

Maggie Craytor
Sophomore | A
Charlottesville, Va.
Western Albemarle
@maggiecraytor



14

Sophia Muscolino
Junior | A
Baldwinsville, N.Y.
Charles W. Baker
@sophia.muscolino



15

Meg MacMurray
Sophomore | A
Chester Springs, Pa.
The Hill School (Maryland)
@megmacmurray



16

Callie Drab
Senior | A
Suffern, N.Y.
Suffern
@calliedrab



17

Morgan Gore
Senior | M
Crofton, Md.
Arundel
@morgangore



18

Lena Stolarick
Sophomore | D
Haddonfield, N.J.
Haddonfield Memorial
@lena_stolarick



19

Maggie Porter
Freshman | A
Stevenson, Md.
St. Paul's School for Girls (Penn State)
@maggieporterr



20

Sam Paradise
Junior | M
Perry Hall, Md.
Maryvale Preparatory
@sparadise10



21

Kate Mercer
Senior | D
Katonah, N.Y.
John Jay
@kat Mercer



22

Mary Matey
Junior | D
Phoenixville, Pa.
Archbishop John Carroll
@marymatey



23

Lulu Rishko
Sophomore | M
Rehoboth Beach, Del.
Cape Henlopen
@lulurishko



24

Kylie O'Brien
Sophomore | D
Berwyn, Pa.
Academy of Notre Dame
@kylieobrien_



25

Amanda Gazelle
Freshman | M
Odenton, Md.
Archbishop Spalding
@amandagazelle15

DELAWARE TV/RADIO CHART



26
Alison Swartout
Senior | M
Charlottesville, Va.
Monticello
@alison.swartout



27
Maddy Mobilia
Junior | D
New Rochelle, N.Y.
The Ursuline School
@madelinemobilia



28
Maggie Farragher
Senior | D
Evanston, Ill.
Evanston Township
@maggiefarragher



29
Kennedy Radziul
Sophomore | D
Northport, N.Y.
Northport
@kennedyradziul



30
Marina Mersch
Freshman | GK
Media, Pa.
Cardinal O'Hara
@marina.mersch18



31
Maddie George
Sophomore | GK
Centreville, Md.
Queen Anne's County
@maddie.a.george



32
Ella Rishko
Senior | A
Rehoboth Beach, Del.
Cape Henlopen (Virginia Tech)
@ella.rishko



33
Sydney O'Donnell
Sophomore | M
Downingtown, Pa.
Downingtown West
@sydneyodonnell33



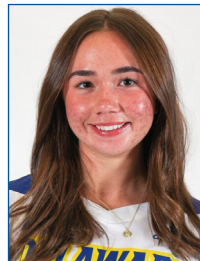
34
Riley Sturtevant
Senior | M
Springfield, Va.
West Springfield
@riley_sturtevant



35
Nichelle Desbordes
Sophomore | D
Ellicott City, Md.
Glenelg Country School
@nichelle.des11



37
Mia Didio
Senior | D
Westport, Conn.
Staples
@mia.didio11



38
Sadie Schultz
Freshman | M
Riverhead, N.Y.
Riverhead
@sadieschultz_



40
Steph Marszal
Senior | GK
Catonsville, Md.
Glenelg Country School
@stephmarszal



41
Molly Baumgratz
Junior | M
Charlotte, N.C.
Charlotte Catholic
@mollybaumgratz



42
Ellie Dassoulas
Senior | A
Towson, Md.
Roland Park Country
@elliedassoulas



Head Coach
Amy Altig
7th season



Assoc. Head Coach
Kara Nakrasius
4th season



Assoc. Head Coach
Sam Pratt
2nd season



Assistant Coach
Lilly Siskind
2nd season