



DELAWARE FIGHTIN' BLUE HENS

ICE HOCKEY GAME NOTES

a new era. ≡



Brendan Thomas, Director, Communications & Creative Services | 207-400-2840 | brendant@udel.edu

SERIES HISTORY

All Time	0-2
Streak	L2
At Home	0-2
On the Road	n/a
Largest Win	n/a
Largest Loss	5-0, 2x, last 10/25/25
Last Win	n/a
Last Loss	5-0, 10/25/25

HOW TO FOLLOW

TV	SportsNet Pittsburgh
Stream	FloHockey
Play-by-Play	Gero von Dehn
Analyst	Bob Kennedy
Analyst	Matt Simkovic
X/Instagram	@Delaware_IH
Live Stats	bluehens.com

WHO ARE WE

Only refer to our institution as the **University of Delaware** or **UD**. Do not use "U of D," "UofD," "the U of D" or "UDel." Do not use periods in "UD." We are based in **Newark (new-ARK), Delaware**.

We are the Fightin' Blue Hens on first reference and Blue Hens, Hens, or Blue & Gold after that.

MEDIA RELATIONS

For interview requests for ice hockey student-athletes or coaches, please contact Brendan Thomas, Director of Communications & Creative Services.

Email brendant@udel.edu
Cell 207-400-2840

DELAWARE (2-28-0, 1-21-0 AHA)

GM 31-32

ROBERT MORRIS (10-18-2, 6-12-2 AHA)



Head Coach: Allison Coomey
Record at UD: 2-28-0 (1st season)
Career Record: same
Last: Lost, 6-1 vs. #15/15 Mercyhurst



Head Coach: Logan Bittle
Record at RMU: 33-61-6 (3rd season)
Career Record: Same
Last: Lost, 5-2 at #4/4 Penn State

feb. 6 (3 p.m.) / feb. 7 (3 p.m.) | coraopolis, pa. | clearview arena (1,200) | flohockey

PUCK DROP

✦ The University of Delaware ice hockey closes out the regular season of its inaugural season this weekend with the program's first-ever trip to Robert Morris for an Atlantic Hockey America (AHA) series. The weekend could be a preview of a first-round matchup in the 2026 AHA Postseason later this month.

✦ This weekend will be a homecoming for Delaware freshman defenseman Taylor Schooley, who grew up in Moon Township, Pa. Her older sister, Kaitlyn, is a junior defender for the Colonials and her father, Derek, is the head coach of Robert Morris' men's hockey team.

✦ These two teams met in Newark back in October to close out Delaware's season-opening 10-game homestand. Robert Morris skated away with a pair of 5-0 victories despite 38 saves from **Charlotte Payne** in game one and 43 stops by **Mattie Robitzer** in the series finale.

✦ **Kaitlin Finnegan** (team-high 7g, 3a) and **Katelynn Charlton** (5g, 5a) led the Blue Hens in scoring and became the first players in program history to reach 10 points. **Francesca Barresi** (3g, 5a), **Tiana McIntyre** (2g, 5a) and **Meera Smith** (4g, 2a) round out the top-five scorers. **Emma MacIntyre** and **Eva Mayo** each have five assists from the blue line.

✦ In goal, **Charlotte Payne** has been one of the best freshman goaltenders in the country with a .915 save percentage and 681 saves in 17 games, while **Mattie Robitzer** owns a .900 save percentage and 555 saves in 14 contests.

✦ Delaware leads the country in blocked shots (698) and ranks second in total saves (1,236). The Blue Hens are the least penalized team in the AHA, taking 102 penalties (3.4/game) for an average of 7.3 minutes per game. UD's power play has been surging lately, going 9-for-36 (.250) over the last nine games after starting the season 1-for-70 (.014).

HEN LEADERS



goals

7

kaitlin finnegan



assists

5

barresi / charlton / mcintyre / macintyre / mayo



shots

94

katelynn charlton



SV%

.915

charlotte payne

2025-26 SCHEDULE

KEY H A N

sept. 26/27
Newark, Del.
L, 4-1 | L, 5-2

oct. 4/5
Newark, Del.
L, 5-2 | W, 2-1

oct. 10/11
Newark, Del.
L, 5-0 | L, 7-0

oct. 17/18
Newark, Del.
L, 2-1 (ot) | L, 1-0

oct. 24/25
Newark, Del.
L, 5-0 | L, 5-0

oct. 31/nov. 1
Erie, Pa.
L, 3-2 (ot) | L, 4-0

nov. 8/9
Providence, R.I.
L, 3-0 | L, 3-2 (ot)

nov. 14/15
Newark, Del.
W, 5-3 | L, 5-0

nov. 28/29
Schenectady, N.Y.
L, 7-0 | L, 3-0

dec. 5/6
Rochester, N.Y.
L, 5-2 | L, 4-2

jan. 2/3
Syracuse, N.Y.
L, 3-1 | L, 4-0

jan. 8/9
Newark, Del.
L, 3-2 | L, 8-1

jan. 16/17
St. Charles, Mo.
L, 3-2 | L, 6-3

jan. 23/24
University Park, Pa.
L, 5-0 | L, 7-0

jan. 30/31
Newark, Del.
L, 4-0 | L, 6-1

feb. 6/7
Moon Township, Pa.
3pm / 3pm
FloHockey

*all times ET

A NEW ERA

After a nearly 18-month wait, the new era is finally here and the University of Delaware Fightin' Blue Hens are officially full members of Conference USA as of July 1, 2025. Fourteen of UD's 22 varsity programs will be housed in CUSA, with seven others joining as affiliate members in the Atlantic Sun (women's lacrosse, men's and women's swimming & diving), Atlantic 10 (men's lacrosse), Mid-American Conference (rowing), The Summit League (men's soccer), and Atlantic Hockey America (ice hockey). Field hockey will be joining Mountain Pacific Sports Federation (MPSF) for the 2025 season, joining UC Davis as one of two founding members of the league's sponsorship

An athletic department built on history and tradition, Delaware brings an abundance of success to CUSA having won 10 national championships, 172 team conference titles, 282 individual conference crowns, 342 major conference awards, 2,655 all-league selections, and 543 all-americans.

UD student-athletes complement their athletic success with strong academic performances. During the 2024-25 academic year, the Blue Hens compiled a cumulative 3.41 grade-

point average—the highest in department history, excluding academic terms impacted by COVID-19. This marked the 11th-consecutive year and the 23rd-straight semester in which UD student-athletes have posted a 3.00 GPA or better.

The move will push the Delaware brand across the nation, spanning from the northeast down into Florida, and west as far as New Mexico. However, the reach won't stop there. At least five football games will hit the national scene on CBS Sports Network/ESPN family of networks, including a non-conference tilt on FOX against Colorado. Men's and women's basketball will also have the chance to play nationally televised games as part of CUSA's media rights agreement with CBS Sports Network and ESPN.

Speaking of reach, Delaware's initial announcements about joining Conference USA reached over two billion people according to social media analytics. Put that into perspective - just over one million people live in the state of Delaware. That means these announcements reached over 2,000 Delawares.

With the announcement of Delaware football transitioning to FBS, the University was committed to adding a women's sport to continue to stay Title IX compliant. The University looked at a number of key criteria, including the feasibility, continued commitment to gender equity, recruiting footprint, conference fit, facilities, and ability to win championships.

In its due diligence, the University of Delaware performed a feasibility study funded by the Industry Growth Fund, a joint initiative of the NHL and NHLPA, with the goal of empowering schools exploring the addition of Men's and/or Women's DI varsity ice hockey. The results of the study reinforced UD's findings and made clear that women's ice hockey was the best path forward. In addition to this being the right decision for the University of Delaware, there's also the great benefit of helping to grow a sport that is popular in this region of the country.



CUSA SPONSORED DELAWARE SPORTS

- Baseball
- M/W Basketball
- W Cross Country/Track & Field
- Football
- M/W Golf
- W Soccer
- Softball
- M/W Tennis
- Volleyball

OTHER DELAWARE SPORTS AFFILIATIONS

- Field Hockey
- Ice Hockey
- M Lacrosse
- W Lacrosse
- MPSF
- Atlantic Hockey America
- Atlantic 10
- Atlantic Sun
- W Rowing
- M Soccer
- M/W Swim/Dive
- Mid-American
- The Summit League
- Atlantic Sun

QUICK FACTS

School.....	University of Delaware
Location.....	Newark, Del.
Founded	1743
Enrollment	24,039
Interim President.....	Dr. Laura Carlson
School Website.....	www.udel.edu
Nickname	Fightin' Blue Hens
School Colors	Blue & Gold
Athletics Website	www.bluehens.com
Interim Director of Athletics.....	Jordan Skolnick
Conference.....	Atlantic Hockey America
Website	www.atlantichockeyamerica.com

HOCKEY PROGRAM

Arena.....	Fred Rust Ice Arena
Capacity	1,350
First Season of Ice Hockey.....	2025-26
All-Time Record	2-28-0
All-Time Fred Rust Record.....	2-14-0
National Championships.....	0
Conference Championships.....	0
Head Coach.....	Allison Coomey (Niagara '02)
Career Record.....	2-28-0 / 1st season
Record at UD.....	same
Letterwinners Returning/Lost.....	0/0
Starters Returning/Lost	0/0
Newcomers.....	21
2024-25 Overall Record	0-0
2024-25 AHA Record.....	0-0
2024-25 AHA Finish.....	n/a
2024-25 Postseason.....	n/a

TABLE OF CONTENTS

Storylines.....	3-6
Program information.....	3
Statistical comparison.....	3
Delaware record when.....	4
The last time.....	5
AHA standings.....	6
Roster & Pronunciations.....	7
Head coach Allison Coomey.....	8
Assistant coaches & support staff.....	9
University of Delaware	10
Career stats & highs.....	11-13
Starters by game	14
Game-by-game leaders.....	15
Scoring plays.....	16
Team stats.....	17
NCAA rankings.....	18-19
TV roster.....	20

WHAT TO LOOK FOR...

- A victory this weekend would be the first in 2026 and snap a 15-game losing streak.
- It would also be the program's first-ever win on the road.
- Eight Blue Hens are still looking for their first collegiate goal.

22nd varsity program

Delaware announced the addition of ice hockey as the University's 22nd varsity intercollegiate program in December 2023. The addition of hockey was in conjunction with Delaware's transition to Conference USA and FBS football and UD's continued commitment to stay Title IX compliant.

45th D1 program

Delaware becomes the 45th college or university to sponsor a Division I women's ice hockey program. The Blue Hens are the first program to start at the Division I level since Assumption College started its program ahead of the 2023-24 season.

inaugural roster

The Blue Hens have 21 student-athletes on their inaugural roster, featuring 17 freshmen and four transfers. The 17 freshmen on the roster is the most on any roster in the country, three more than Providence, which is second with 14 freshmen.

first state, first season

The inaugural season is not only the first year that UD will have a Division I program, but the Blue Hens are the first Division I ice hockey team, men or women, in the state of Delaware.

The only NHL player to have ever come from the First State is Mark Eaton, who played 13 seasons for Philadelphia, Nashville, Pittsburgh, and the New York Islanders.

hockey in the south

Of the 45 Division I women's ice hockey teams in the country, the University of Delaware is the second-most southern program. Only Lindenwood in St. Charles, Missouri, also in Atlantic Hockey America (AHA), is further south.

for the 302

Delaware is one of 11 states that are represented by one area code. Delaware is the 302, while the other states are: Alaska, Hawaii, Maine, Montana, New Hampshire, North Dakota, Rhode Island, South Dakota, Vermont, and Wyoming.

pro relations

A pair of Blue Hens are related to professional hockey players in both the NHL and PWHL.

Freshman forward **Katelynn Charlton** is the cousin of Mikyla Grant-Mentis who currently plays for PWHL Seattle.

Assistant Coach Melissa Samoskevich

has twin younger siblings who both play professional hockey. Her younger brother, Mackie, was a first-round draft pick (24th overall) by the Florida Panthers in 2021 and has won two Stanley Cups. Her sister, Maddy, was drafted in the fifth round (39th overall) by PWHL Vancouver in 2025.

proud members of aha

Delaware is the seventh member of Atlantic Hockey America (AHA), joining fellow league members Lindenwood, Mercyhurst, Penn State, RIT, Robert Morris, and Syracuse. Formerly College Hockey America (CHA), the conference merged with the men's Atlantic Hockey Association prior to the 2024-25 season to form the AHA which now features 10 men's teams and seven women's teams.

The AHA has had alumni compete for eight countries at the Winter Olympics and skated off with 14 medals, including four gold. Professionally, several conference alumni are currently on Professional Women's Hockey League (PWHL) rosters, including three selections in the 2025 PWHL Draft in June.

STATISTICAL COMPARISON

Category	DEL	NCAA	AHA	RMU	NCAA	AHA
Scoring Offense	1.03	44th	7th	2.07	31st	5th
Scoring Defense	4.30	43rd	7th	2.80	29th	5th
Scoring Margin	-3.27	44th	7th	-0.73	32nd	5th
Power-Play Pct.	.093	41st	7th	.154	28th	4th
Penalty Killing Pct.	.761	38th	6th	.759	39th	7th
Goals	31	44th	7th	62	28th	5th
Assists	44	44th	7th	105	24th	4th
Points	75	44th	7th	167	26th	5th
Power Play Goals	10	34th	7th	16	23rd	4th
Shorthanded Goals	1	22nd	5th	1	22nd	5th
Saves	1,236	2nd	1st	848	17th	3rd
Faceoff Win Pct.	.405	44th	7th	.549	9th	2nd
Penalty Minutes per Game	7.27	27th	7th	10.23	3rd	1st

no stranger to starting programs

Head coach **Allison Coomey** was hired as the Blue Hens' first head coach in March 2024. She spent 18 months compiling a roster and coaching staff ahead of the program's inaugural season.

This isn't the first time that Coomey has helped launch a new program. As a student-athlete, she was a member of the inaugural women's ice hockey team at Niagara University. She played four seasons for the Purple Eagles, serving as an alternate captain her senior season when Niagara advanced all the way to the 2002 NCAA Women's Frozen Four.

a day for the record books

The Blue & Gold picked up the first victory in program history on Sunday, October 5, securing a 2-1 win against Holy Cross. **Charlotte Payne** made 49 saves, then a career-high, while **Meera Smith** scored her first-career goal in the second period and **Katelynn Charlton** scored the program's first power play goal which proved to be the game-winner.

first commit, first goal

Freshman **Francesca Barresi** cemented herself in the program record book when she scored the first-ever goal in Delaware ice hockey history during the Blue Hens' inaugural game against LIU on September 26. The Ottawa, Canada native blocked a pass and came in alone on a breakaway to net her first collegiate goal midway through the third period. It was only fitting as Barresi was the first player to commit to play for the program in November 2024.

fearless shot blockers

The Blue Hens' defense has blocked 698 shots, which leads all of Division I. Saint Michael's is second in the country with 473 blocks. UD has 12 games with at least 25 blocks, with a season-high 44 at Brown (Nov. 9).

Individually, **Lexie Lonask** leads the entire country with 129 blocked shots and is one of just two players with more than 100. She has two games with at least 10 blocks, including a career-high 11 at Brown (Nov. 9). **Bailey Gray** (68) and **Kaitlin Finnegan** (59) are also in the top 15 nationally and Finnegan is second among all forwards.

offense starting to click

Delaware enjoyed its best offensive weekend of the season at Lindenwood (Jan. 16-17), scoring five goals and registering 15 total points. Five different players had two points on the weekend - **Danica Mark** (2g), **Bailey Gray** (1g, 1a), **Francesca Barresi** (2a), **Katelynn Charlton** (2a), and **Emma MacIntyre** (2a). UD scored a program-record three power play goals in the series finale.

charlton's big weekend

Katelynn Charlton was named the AHA Rookie of the Week on October 7, earning the program's first-ever weekly honor after a big weekend against Holy Cross. In the series opener, she scored her first-career goal, part of two-goal performance to become the first Blue Hen to score multiple goals in a single game. Charlton followed that with the eventual GWG midway through the second period in the series finale. It was UD's first power play goal and provided the difference in Delaware's first win in program history, a thrilling 2-1 victory.

no mercy from lonask

Lexie Lonask was named the AHA Rookie of the Week on November 4 for her performance at Mercyhurst. She scored her first-career goal with three seconds remaining in regulation to force overtime in the series opener. She also blocked 19 shots over the two games, including a then-career-high 10 blocks in the first game.

two is better than one

Delaware has had three different players score two goals in a game. **Katelynn Charlton** became the first Blue Hen to do it against Holy Cross (Oct. 4), including scoring the program's first power play goal and game-winning goal. **Kaitlin Finnegan** scored twice in the first period against Lindenwood (Nov. 14), including Delaware's first shorthanded tally. **Francesca Barresi** scored two power play goals in a 1:47 span against RIT (Jan. 8) to become the first Blue Hen to score two power play goals in a game.

saves on saves on saves

Delaware goaltenders **Mattie Robitzer** and **Charlotte Payne** have been exceptionally busy in the crease this season, ranking second in all of Division I with 1,236 combined saves. Overall, the duo has 14 games with at least 40 saves.

Robitzer has three of the top-seven single-game performances in the country this season. She made a career-high 63 saves at Mercyhurst and had 62 stops against Penn State and 57 against Holy Cross.

Payne has been equally impressive to start her collegiate career. Against Holy Cross, she stopped 49-of-50 shots to earn her first collegiate victory, and seal Delaware's first-ever win. Payne has made a career-high 51 saves twice - against Penn State and at Brown - and had a 50-save performance at Mercyhurst.

bringing the payne

Charlotte Payne owns a .915 save percentage through her first 17 career games, making 681 stops on 744 shots faced. Among freshmen, she has the third-most saves nationally, and her save percentage ranks fifth among those who have played at least 15 games.

DELAWARE RECORD WHEN...

	25-26	COOMEY
Overall	2-28-0	2-28-0
Conference	1-21-0	1-21-0
Non-conference	1-7-0	1-7-0
Home	2-14-0	2-14-0
Away	0-14-0	0-14-0
Neutral	0-0-0	0-0-0
Current streak	L13	L13
Current home streak	L5	L5
Current road streak	L14	L14
Current neutral streak	--	--
Day game	1-19-0	1-19-0
Night game (5pm or later)	1-9-0	1-9-0
September	0-2-0	0-2-0
October	1-8-0	1-8-0
November	1-6-0	1-6-0
December	0-2-0	0-2-0
January	0-10-0	0-10-0
February	0-0-0	0-0-0
vs. ranked opponent	0-8-0	0-8-0
Scoring first	1-5-0	1-5-0
Opponent scores first	1-23-0	1-23-0
Scoring 0-1 goals	0-19-0	0-19-0
Scoring 2 goals	1-8-0	1-8-0
Scoring 3 goals	0-1-0	0-1-0
Scoring 4+ goals	1-0-0	1-0-0
Allowing 0-1 goals	1-1-0	1-1-0
Allowing 2 goals	0-1-0	0-1-0
Allowing 3 goals	1-7-0	1-7-0
Allowing 4+ goals	0-19-0	0-19-0
Leading after 1st	1-3-0	1-3-0
Trailing after 1st	0-17-0	0-17-0
Tied after 1st	1-8-0	1-8-0
Leading after 2nd	2-2-0	2-2-0
Trailing after 2nd	0-21-0	0-21-0
Tied after 2nd	0-5-0	0-5-0
Overtime	0-3-0	0-3-0
Shootout	0-0-0	0-0-0
1-goal games	1-6-0	1-6-0
2-goal games	1-2-0	1-2-0
3-goal games	0-7-0	0-7-0
4+-goal games	0-13-0	0-13-0
Out-shooting opponent	0-1-0	0-1-0
Out-shot by opponent	2-27-0	2-27-0
Shots are even	0-0-0	0-0-0
Winning more faceoffs	0-4-0	0-4-0
Losing more faceoffs	2-24-0	2-24-0
Faceoffs are even	0-0-0	0-0-0
Taking more penalties	0-10-0	0-10-0
Taking fewer penalties	2-13-0	2-13-0
Penalties are even	0-5-0	0-5-0

faceoff aces

Meera Smith leads UD and ranks 10th in AHA with 204 faceoff wins. **Francesca Barresi** is second on the team with 162 wins. The duo has combined for 10 games with at least 10 wins.

opening weekend of firsts

Delaware's inaugural weekend against LIU saw a lot of firsts across the program as 16 student-athletes made their collegiate debuts and four others made their first Blue Hen appearances.

Francesca Barresi and **Billi Roman** scored their first collegiate goals, while **Katelynn Charlton** and **Lexie Lonask** recorded their first career assists.

Kaitlin Finnegan (goal) and **Tiana McIntyre** (assist) registered their first points in the Blue & Gold after starting their careers at Lindenwood and Quinnipiac, respectively.

It was also the first game behind the bench for head coach **Allison Coomey** after 21 seasons as an assistant coach at five different programs.

diverse roster

Delaware's inaugural roster has 21 student-athletes made up of 14 Americans, six Canadians, and one Norwegian. Only three of the 11 states represented (Massachusetts, Minnesota, Pennsylvania) are called home by more than one Blue Hen. The other eight states include Arizona, Colorado, Delaware, Kansas, New York, Utah, Virginia, and Wisconsin.

unique home states

Freshman **Billi Roman** (Hockessin) is the only active Division I women's ice hockey player to hail from the state of Delaware. Likewise, graduate student **Kaitlin Finnegan** (Tecumseh) is the only active player in DI from Kansas.

When senior **Tiana McIntyre** (Park City) entered her freshman season at Quinnipiac in 2022-23, she became the first woman from the state of Utah to play Division I ice hockey. There are now two as **Eden Granley** (American Fork) is a sophomore at St. Anselm.

Freshman **Lexie Lonask** (Chandler) is one of three active players in Division I from Arizona. The other two are Union freshmen **Natalie Andelova** (Laveen Village) and **Isabel Powers** (Scottsdale).

home sweet home

While Delaware will be playing its first home games in Fred Rust Ice Arena this season, a pair of Blue Hens are quite familiar with the venue. Freshman **Billi Roman** played her high school hockey at Fred Rust while playing for The Tatnall School. Junior **Mattie Robitzer** grew up just over the Pennsylvania border in Kennett Square and often played youth hockey in Newark.

oh captain, my captains

Delaware will be led by four captains this season. Graduate student **Kaitlin Finnegan** and senior **Tiana McIntyre** will be the first Blue Hens to don the captain's "C" while juniors **Mattie Robitzer** and **Danica Mark** will serve as alternate captains.

Finnegan has appeared in 107 career games after spending her first five seasons at Lindenwood. McIntyre played 67 games over her first three seasons at Quinnipiac. Robitzer and Mark both played two seasons at Northeastern and Union, respectively.

norwegian national

Freshman **Ida Haave** is a member of the Norwegian National Team. A native of Kristiansand, Norway, Haave represented her home country at the 2024 and 2025 IIHF Women's World Championships. In 2024 in Austria, Haave helped lead Norway to the top spot at the Women's World Championship Division I Group A in Austria, earning a promotion into the top division in 2025 for the first time since 1997. At the 2025 games in Czechia, Haave recorded one assist in four games as Norway went 1-3 in pool play, finishing fourth of five teams in Group B.

destined to be a blue hen

Freshman **Billi Roman** is not only the lone Delawarean on the roster, but the only woman from the First State playing Division I hockey. Hailing from Hockessin, Roman attended The Tatnall School in Wilmington, where she suited up for the boy's hockey team that played its home games at Fred Rust Ice Arena.

Roman has several relatives who attended UD, including her father and grandfather, as well as an uncle and two cousins who played for Delaware's club hockey programs. She is wearing No. 21 in honor of her late uncle, Tim Roman, who played for the Blue Hens in the early 1990s.

growing the game out west

Senior captain **Tiana McIntyre** is proud to own the title as the first Division I ice hockey player from Utah. This past summer, McIntyre began working for Smith Entertainment Group (SEG), the company that owns the NHL's Utah Mammoth and the NBA's Utah Jazz. In her role, she assists with the development and growth of youth hockey in Utah, going around the state and helping run camps and clinics. McIntyre has worked side-by-side with great women's hockey players such as former U.S. Olympians **Hillary Knight** and **Lindsey Fry**, **Walter Cup** Champion **Dominique Petrie** of the Minnesota Frost in the PWHL, and NHL veteran **Alexander Kerfoot**.

THE LAST TIME DELAWARE...

Won in OT.....	
Lost in OT.....	11/9/25 at #15/15 Brown (L, 3-2)
Won in a shootout.....	
Lost in a shootout.....	
Had a shutout.....	
Was shutout.....	1/30/26 vs. #15/15 Mercyhurst (L, 4-0)
Scored 2 PP goals.....	1/8/26 vs. RIT
Scored 3+ PP goals.....	1/17/26 at Lindenwood (3)
Scored a shorthanded goal.....	11/14/25 vs. Lindenwood (W, 5-0)
Scored 4 goals.....	
Scored 5+ goals.....	11/14/25 vs. Lindenwood (W, 5-3)
Allowed 5+ goals.....	1/31/26 vs. #15/15 Penn State (L, 6-1)
Had 4 different goal scorers.....	11/14/25 vs. Lindenwood (W, 5-0)
Had 5+ goal scorers.....	
Took 30-39 shots.....	
Took 40-49 shots.....	
Took 50+ shots.....	
Allowed 30-39 shots.....	1/31/26 vs. #15/15 Penn State (38)
Allowed 40-49 shots.....	1/30/26 vs. #15/15 Penn State (48)
Allowed 50-59 shots.....	1/17/26 at Lindenwood (52)
Allowed 60+ shots.....	10/31/25 at RV/RV Mercyhurst (66)
Blocked 20-29 shots.....	1/31/26 vs. #15/15 Penn State (23)
Blocked 30-39 shots.....	1/8/26 vs. RIT (35)
Blocked 40+ shots.....	11/9/25 at #15/15 Brown (44)
Did not commit a penalty.....	
Played a ranked team.....	1/31/26 vs. #15/15 Penn State (L, 6-1)
Beat a ranked team.....	

THE LAST TIME A BLUE HEN...

Scored 2 goals.....	Barresi, 1/8/26 vs. RIT
Scored 3 goals.....	
Scored a SH goal.....	Finnegan, 11/14/25 vs. Lindenwood
Had 2 assists.....	McIntyre, 1/17/26 at Lindenwood
Had 3 assists.....	
Had 3+ points.....	
Had 5+ shots.....	Barresi/Charlton, 1/8/26 vs. RIT (5)
Blocked 10+ shots.....	Lonask, 11/9/25 at #15/15 Brown (11)
Made 20-24 saves.....	Payne, 11/15/25 vs. Lindenwood (24)
Made 25-29 saves.....	Robitzer, 10/18/25 vs. Syracuse (30)
Made 30-39 saves.....	Robitzer, 1/31/26 vs. #15/15 Penn State (32)
Made 40-49 saves.....	Payne, 1/30/26 vs. #15/15 Penn State (44)
Made 50-59 saves.....	Payne, 11/9/25 at #15/15 Brown (51)
Made 60+ saves.....	Robitzer, 10/31/25 at RV/RV Mercyhurst (63)
Recorded a shutout.....	

ROSTER CONNECTIONS

This weekend will serve as a reunion for several members of both programs as there are multiple connections - both geographically and previous teams - between the two rosters.

Quinnipiac

Tiana McIntyre (DEL)
Melissa Samoskevich (DEL) - player/coach
Lucy Phillips (RMU)

Pittsburgh Penguins Elite

Tiana McIntyre (DEL)
Taylor Schooley (DEL)
Mya Kearns (RMU)
Kaitlyn Schooley (RMU)
Logan Bittle (RMU)

Philadelphia Jr. Flyers

Mattie Robitzer (DEL)
Billie Roman (DEL)
Taylor Schooley (DEL)
Thalia D'Elia (RMU)

Massachusetts

Wren Abboud (DEL)
Madison Bonavita (DEL)
Ashlyn Ham (RMU)

Pennsylvania

Mattie Robitzer (DEL)
Taylor Schooley (DEL)
Thalia D'Elia (RMU)
Mya Kearns (RMU)
Ellie Marcovsky (RMU)
Kaitlyn Schooley (RMU)

Ontario

Francesca Barresi (DEL)
Victoria Borg (DEL)
Katelynn Charlton (DEL)
Charlotte Payne (DEL)
Catriona Crarer (RMU)
Shayne Desjardins (RMU)
Molly Dunn (RMU)
Mya Farr (RMU)
Morgan Giannone (RMU)
Taylor Storey (RMU)
Hannah Thornton (RMU)
Alexis Vrana (RMU)
Wlla Willoughby (RMU)

Nova Scotia

Emma MacIntyre (DEL)
Jessica MacKinnon (RMU)
Lucy Phillips (RMU)

twins

The genetic trait of twins runs strong on the Blue Hens roster. **Mattie Robitzer** has a twin sister - Lily - while **Tiana McIntyre** has a twin brother - Colten - who is the traveling practice goalie and EBUG for the Utah Mammoth. Head coach **Allison Coomey** has a twin sister - Alissa - while assistant coach **Melissa Samoskevich** has two younger siblings who are twins - Mackie and Maddy - who both play professional hockey.

international experience

The Blue Hens have loads of international experience among its roster and coaching staff.

Freshman **Ida Haave** is currently a member of the Norwegian National Team, representing her country at the 2024 and 2025 IIHF Women's World Championships.

Freshman **Katelynn Charlton** represented the Caribbean at the 2025 Dream Nations Cup in late May and early June. She helped lead her squad to the championship game, where the Caribbean fell to Egypt in overtime. The tournament was played at The Rink at American Dream in East Rutherford, New Jersey and supported by the New Jersey Devils (NHL) and New York Sirens (PWHL).

Assistant coach **Melissa Samoskevich** won gold with Team USA at the 2019 IIHF Women's World Championship in Finland, playing in all seven games and scoring two goals. Samoskevich also represented the U.S. at the 2014 and 2015 U18 Women's World Championships. She had two assists in 2014 and six goals, including a hat trick against Russia, in 2015.

Assistant coach **Taylor Willard** won a silver medal with Team USA at the 2013 U18 Women's World Championships where she picked up three assists in five games.

Head coach **Allison Coomey** was on staff with the silver-medal winning USA National Team at the 2022 Beijing Olympic Games as a team scout. She served as the head coach for the U23 U.S. Women's National Team in 2021 and 2022 and spent time as an assistant coach for the senior national team during the 2021 IIHF World Championship.

head coaching couple

Head coach **Allison Coomey** is married to Delaware Women's Soccer Head Coach **Kelly Lawrence**, who is in her third season at the helm of the Blue Hens.

aha connections

Several Blue Hens have strong ties to Delaware's new conference. Graduate student and team captain **Kaitlin Finnegan** played five seasons at Lindenwood in Missouri. Finnegan skated in 107 games for the Lions, netting seven goals and adding 16 assists. Freshman **Taylor Schooley** is the daughter of Derek Schooley, who has been the head coach of the Robert Morris men's ice hockey team since 2004. Additionally, her older sister, Kaitlyn is a junior defenseman for Robert Morris.

Additionally, head coach **Allison Coomey** (2017-24) and assistant coach **Melissa Samoskevich** (2020-22) both spent time behind the bench at Penn State.

nhl partners

Shortly after announcing the addition of women's ice hockey as a varsity sport, the University of Delaware made another important announcement. In a first-of-its-kind pairing, Delaware and the Philadelphia Flyers formed a strategic partnership aligned around growing the game of hockey, community engagement, and launching a world-class women's ice hockey program. The Blue Hens became the only NCAA Division I women's ice hockey program in the country to have a partnership with an NHL team.

Delaware ice hockey student-athletes will have access to career and professional development with the Flyers, as well as a chance to participate in the Flyers Next Shift program. The program was developed to allow women in college to shadow professional women throughout the organization on game nights. Other opportunities for internships in both business and hockey operations could happen as well.

The partnership also brings co-hosted youth hockey clinics to Fred Rust Ice Arena, the Blue Hens' home in Newark, as well as bringing the Flyers Community Caravan to UD.

2025-26 AHA STANDINGS

	AHA PTS	AHA GP	AHA RECORD	AHA OW-OL	AHA SOW-SOL	AHA GF-GA	OVERALL GP	OVERALL RECORD	OVERALL GF-GA
Penn State	58	20	19-1-0	0-1	0-0	100-19	30	26-4-0	130-39
Mercyhurst	45	22	16-5-1	4-0	0-1	76-40	32	20-10-2	101-65
Lindenwood	30	20	9-10-1	0-2	0-1	53-60	30	11-17-2	75-95
RIT	29	20	9-11-0	0-2	0-0	60-56	29	14-15-0	86-73
Syracuse	28	20	9-9-2	2-0	1-1	37-51	30	13-14-3	57-79
Robert Morris	21	20	6-12-2	1-0	2-0	36-60	30	10-18-2	62-84
Delaware	5	22	1-21-0	0-2	0-0	22-98	30	2-28-0	31-129

2025-26 DELAWARE NUMERICAL ROSTER

#	NAME	POS.	YR.	HT.	S/C	HOMETOWN/HIGH SCHOOL (PREV. SCHOOL)
1	Mattie Robitzer	G	Jr.	5-4	L	Kennett Square, Pa. / Unionville (Northeastern)
2	Lexie Lonask	D	Fr.	5-8	R	Chandler, Ariz. / Shattuck St. Mary's [Minn.]
3	Madison Bonavita	F	Fr.	6-0	L	Longmeadow, Mass. / Milton Academy
4	Tiana McIntyre	D	Sr.	5-8	R	Park City, Utah / Park City (Quinnipiac)
5	Emma MacIntyre	D	Fr.	5-4	R	Halifax, Nova Scotia / Stanstead College
6	Kacey Blum	F	Fr.	5-6	R	McLean, Va. / McLean
8	Victoria Borg	F	Fr.	5-4	L	Burlington, Ontario / Blyth Academy
9	Bailey Gray	D	Fr.	5-4	L	Plymouth, Minn. / Benilde-St. Margaret's
10	Danica Mark	F	Jr.	5-7	R	Duluth, Minn. / Duluth Marshall School (Union)
11	Charlie Voge	F	Fr.	5-6	R	Sun Prairie, Wisc. / St. Paul's School
13	Kaitlin Finnegan	F	Gr.	5-4	R	Tecumseh, Kan. / Kansas Connections Academy (Lindenwood)
15	Wren Abboud	F	Fr.	5-2	L	Weymouth, Mass. / Thayer Academy
16	Eva Mayo	F/D	Fr.	5-6	R	Honeoye Falls, N.Y. / Kent School
17	Suvina Heidt	D	Fr.	5-6	R	Aurora, Colo. / Winchendon School [Mass.]
18	Francesca Barresi	F	Fr.	5-6	L	Ottawa, Ontario / St. Joseph Catholic
19	Katelynn Charlton	F	Fr.	5-7	L	Brampton, Ontario / St. Martins Catholic Secondary
20	Meera Smith	F	Fr.	5-6	R	Victoria, British Columbia / Shawnigan Lake School
21	Billi Roman	F	Fr.	5-3	L	Hockessin, Del. / The Tatnall School
24	Taylor Schooley	D	Fr.	5-6	L	Moon Township, Pa. / Moon Area
27	Ida Haave	F	Fr.	5-6	L	Kristiansand, Norway / Norges Toppidrettsgymnas Lillehammer
31	Charlotte Payne	G	Fr.	5-8	L	Oakville, Ontario / Abbey Park

ALPHABETICAL

#	NAME	POS.
15	Wren Abboud	F
18	Francesca Barresi	F
6	Kacey Blum	F
3	Madison Bonavita	F
8	Victoria Borg	F
19	Katelynn Charlton	F
13	Kaitlin Finnegan	F
9	Bailey Gray	D
27	Ida Haave	F
17	Suvina Heidt	D
2	Lexie Lonask	D
5	Emma MacIntyre	D
10	Danica Mark	F
16	Eva Mayo	F/D
4	Tiana McIntyre	D
31	Charlotte Payne	G
1	Mattie Robitzer	G
21	Billi Roman	F
24	Taylor Schooley	D
20	Meera Smith	F
11	Charlie Voge	F

GEOGRAPHICAL

Arizona (1)		
2	Lexie Lonask	D
Canada (6)		
18	Francesca Barresi	F
5	Emma MacIntyre	D
8	Victoria Borg	F
19	Katelynn Charlton	F
31	Charlotte Payne	G
20	Meera Smith	F
Colorado (1)		
17	Suvina Heidt	D
Delaware (1)		
21	Billi Roman	F
Kansas (1)		
13	Kaitlin Finnegan	F
Massachusetts (2)		
15	Wren Abboud	F
3	Madison Bonavita	F
Minnesota (2)		
9	Bailey Gray	D
10	Danica Mark	F
New York (1)		
16	Eva Mayo	F/D
Norway (1)		
27	Ida Haave	F
Pennsylvania (2)		
1	Mattie Robitzer	G
24	Taylor Schooley	D
Utah (1)		
4	Tiana McIntyre	D
Virginia (1)		
6	Kacey Blum	F
Wisconsin (1)		
11	Charlie Voge	F

PRO-NUN-SEE-AY-SHUNS

#1	Mattie ROBITZER	ROW-bit-zer	#18	Francesca BARRESI	buh-reh-SEE
#2	Lexie LONASK	low-NASK	#24	Taylor SCHOOLEY	school-EE
#3	Madison BONAVIDA	bawn-uh-VEE-tuh	#27	IDA HAAVE	ee-da ho-VUH
#6	Kacey BLUM	bloom	AC	Melissa SAMOSKEVICH	sam-OH-skeh-vitch
#15	Wren ABBODD	ah-BOOD			
#17	SUVINA HEIDT	seh-VEE-nuh height			

HEAR OUR NAMES



ROSTER BY CLASS

GRADUATES (1)

Kaitlin Finnegan

SENIORS (1)

Tiana McIntyre

JUNIORS (2)

Danica Mark
Mattie Robitzer

FRESHMEN (17)

Wren Abboud
Francesca Barresi
Kacey Blum
Madison Bonavita
Victoria Borg
Katelynn Charlton
Bailey Gray
Ida Haave
Suvina Heidt

Lexie Lonask
Emma MacIntyre
Eva Mayo
Charlotte Payne
Billi Roman
Taylor Schooley
Meera Smith
Charlie Voge



THE COOMEY FILE

Hometown: Baldwinsville, N.Y.
Alma Mater: Niagara '02
Degree: Education
Master's: School Counseling
Years in Coaching: 22nd in 2025-26

NOTABLE HIGHLIGHTS

2019 AHCA Women's Hockey Assistant COY
 2013 National Champ. Appearance (BU)
 2011 National Champ. Appearance (BU)
 2002 Niagara Team Captain
 2002 Women's Frozen Four
 1999 Niagara WLAX Rookie of the Year

AS DELAWARE HEAD COACH

Year	1st in 2025-26
Overall Record	2-28-0
Home	2-14-0
Away	0-14-0
Neutral	0-0-0
vs. Ranked Teams	0-8-0
In AHA Games	1-21-0

COOMEY YEAR-BY-YEAR

YEAR	W-L-T	PCT.	CONF
2025-26	2-28-0	.067	1-21-0
TOTAL	2-28-0	.067	1-21-0

First career win: 2-1 vs. Holy Cross, 10/5/25

ALL-TIME VS OPPONENTS

Brown	0-2-0
Holy Cross	1-1-0
LIU	0-2-0
Lindenwood	1-3-0
Mercyhurst	0-4-0
Penn State	0-4-0
RIT	0-4-0
Robert Morris	0-2-0
Syracuse	0-4-0
Union	0-2-0

HEAD COACH ALLISON COOMEY

With over two decades of women's ice hockey coaching experience, the University of Delaware selected Allison Coomey to be the inaugural head coach of the women's ice hockey program on March 26, 2024.

Coomey comes to Newark after spending the past seven seasons at Penn State. She served as an assistant coach for three seasons before being promoted to associate head coach in 2020-21.

Over the course of her career, Coomey has coached four student-athletes to the Olympics, eight to national teams, four All-Americans, 15 major conference award winners, and 47 all-conference selections over her time at Penn State and Boston U.

Coomey and the Nittany Lions captured the past two league tournament titles, earning a bid to the NCAA Tournament. The team also claimed the CHA regular season title in three of the past four seasons.

Primarily responsible for coaching defense, Coomey's leadership turned the Nittany Lions into one of the best defensive units in the country by allowing just 1.88 goals per game over the past five seasons dating back to 2019-20.

Selected for various international coaching roles with USA Hockey, Coomey was on staff with the silver-medal winning USA National Team at the 2022 Beijing Olympic Games as a team scout and extension of the coaching staff. Coomey also served as the head coach for the U23 US Women's National Team in 2021 and 2022.

Coomey also spent time as an assistant coach for the USA senior national team during the 2021 IIHF World Championship. She was also a member of USA Hockey's scouting staff at the 2019 IIHF U18 Women's World Championship.

At the 2019 America Hockey Coaches Association Convention, Coomey received the AHCA Women's Hockey Assistant Coach of the Year award for her outstanding career resume.

Prior to Penn State, Coomey spent nine seasons at Boston University where she helped the Terriers qualify for the NCAA Tournament six times, including a pair of NCAA Championship appearances in 2011 and 2013. While at BU, Coomey coached four Olympians who combined to win six gold medals for the Canadian National Team at the 2010 and 2014 Winter Olympic Games.

A four-year letterwinner at Niagara, Coomey returned to her alma mater as an assistant coach from 2004-08, helping the Purple Eagles reach the CHA title game twice.

Before Niagara, Coomey served as an assistant coach at Plattsburgh in 2003-04 where she helped guide the Cardinals to the 2004 Eastern Collegiate Athletic Conference (ECAC) West Division III regular-season title and the NCAA Division III semifinals. Coomey secured her first job in the industry as an assistant women's hockey coach at Connecticut College.

The Baldwinsville, New York, native earned two degrees from Niagara, a bachelor's degree in education in 2002 and a master's degree in school counseling in 2008. She was a two-time ECAC All-Academic Team member and earned a spot on the Metro Atlantic Athletic Conference All-Academic Team.

Coomey was a two-sport letterwinner at Niagara, playing ice hockey and lacrosse from 1998-2002. On the ice, she served as an alternate captain during her senior season and helped the team to its most successful campaign in program history. The Purple Eagles reached the 2002 NCAA Women's Frozen Four and finished tied for third in the final national poll. On the lacrosse field, she earned the team's rookie of the year award.

COOMEY'S COACHING ASSIGNMENTS

YEAR	SCHOOL	POSITION
2025-Pres.	Delaware	Head Coach
2017-24	Penn State	Assistant Coach / Associate Head Coach
2008-17	Boston U.	Assistant Coach
2004-08	Niagara	Assistant Coach
2003-04	Plattsburgh	Assistant Coach
2002-03	Connecticut College	Assistant Coach

SUPERLATIVES UNDER COOMEY

Goals Scored	5, vs. Lindenwood (11/14/25)	Goals Allowed	8, vs. RIT (1/9/26)
Most Shots on Goal	29, vs. LIU (9/27/25)	Fewest Opponent SOG	27, vs. LIU (9/27/25)
Fewest Shots on Goal	1, vs. #6/6 Penn State (10/11/25)	Most Opponent SOG	69, vs. #6/6 Penn State (10/11/25)
Power Play Goals	3, at Lindenwood (1/17/26)	Opponent PP Goals	2, 4x, last vs. #15/15 Mercyhurst (1/31/26)
Shorthanded Goals	1, vs. Lindenwood (11/14/25)	Opponent SH Goals	1, 5x, last vs. #15/15 Mercyhurst (1/31/26)
Saves	63, at RV/RV Mercyhurst (10/31/25)	Opponent Saves	27, vs. LIU (9/27/25)
Penalties	6, vs. Robert Morris (10/25/25)	Opponent Penalties	9, vs. Syracuse (10/17/25)
Penalty Minutes	21, at RV/RV Mercyhurst (10/31/25)	Opponent Penalty Minutes	21, vs. #15/15 Mercyhurst (1/31/26)

ASSISTANT COACHES

MELISSA SAMOSKEVICH



An IIHF World Champion with Team USA, Samoskevich joined the University of Delaware ice hockey program as its first-ever assistant coach in July of 2024.

Samoskevich came to Newark after spending the 2023-24 season as an assistant coach at Princeton.

With the Tigers, she assisted with video analysis, practice planning, drill implementation, special teams, and game management.

In the 2022-23 season, Samoskevich served as the director of player development and operations at her alma mater, Quinnipiac. The Bobcats went 30-10, making the ECAC Hockey semifinals and earning an at-large NCAA tournament bid.

Samoskevich spent the previous two seasons at Penn State with head coach Allison Coomey, helping the Nittany Lions to an overall record of 34-13-7 and 24-5-5 in College Hockey America.

A Sandy Hook, Connecticut native, Samoskevich scored 54 goals and added 55 assists during her undergraduate career at Quinnipiac, ranking third and fifth, respectively in school history. Her 109 points were the fourth-most in program history. Samoskevich was an ECAC Hockey All-Rookie honoree in 2016 while helping the Bobcats to the ECAC tournament title.

Following her final season at Quinnipiac, Samoskevich was named to the U.S. team for the 2019 IIHF Women's World Championship in Finland, playing in all seven games as the Americans went undefeated to win the gold medal. Samoskevich had two goals during the pool-play round, one each against Finland and Russia.

She also donned the red, white, and blue at a pair of U18 Women's World Championships. In 2014 in Hungary, she had two assists as the U.S. won silver, and in 2015 in Buffalo, the U.S. won gold with Samoskevich scoring six goals including a hat trick against Russia and two goals in a semifinal win over the Czech Republic.

After graduating from Quinnipiac in 2019 with a history degree, Samoskevich began her professional career by playing part of the 2019-20 season professionally in Sweden with Brynäs IF. Later that season, she returned to the U.S. to play first with the PWHPA's New England team and then with her home-state Connecticut Whale in the NWHL/PHF.

TAYLOR WILLARD



Willard joined the Delaware coaching staff as an assistant coach in 2025 ahead of the program's inaugural season.

Willard came to Newark after spending four seasons as an assistant coach at Norwich University where she coached 27 all-conference selections, two NEHC Rookie of the Year recipients and

Livia Brooks became the first player in program history to win NEHC Player and Rookie of the Year honors in 2023-24. The Cadets were NEHC Championship in 2022-23 to earn a berth in the NCAA Tournament and won consecutive NEHC regular season championships in 2023-24 and 2024-25. Over Willard's four seasons, Norwich either ranked or receiving votes in all but two USCHO Division III Top-15 Women's Polls.

In 2024-25, Willard guided the team's defense that ranked ninth nationally in scoring defense (1.19 goals/game) and second with 11 shutouts. She also led the penalty-killing unit that had a 92.9-percent success rate.

Willard's penalty killers set a program record in 2023-24 by killing 95.3-percent of penalties, which led the entire nation. The scoring defense (0.93) was second in the country, and recorded 10 team shutouts.

Willard began her coaching career as a volunteer assistant coach for two seasons at her alma mater, the University of Vermont, helping lead the Catamounts to back-to-back Hockey East Quarterfinal appearances.

A two-time team captain at Vermont, Willard ranks among the program's top 10 for career games played (145), points (62), assists (41) and power-play goals (12). Her 62 points was the most by a Vermont defenseman.

Willard was a two-time Hockey East Second Team All-Star (2015-16, 2016-17) and an honorable mention all-star in 2017-18. She was named to the New England Hockey Writers Association Division I All-Star (2016-17). Willard also won the 2018 Sarah Devens Award, presented annually to a player who "demonstrates leadership and commitment on and off the ice."

Willard played professionally for the Montreal Canadiens (2018-19) in the Canadian Women's Hockey League. She registered seven points (two goals, five assists) in 26 games. Willard was also a member of Team USA at the 2013 U18 Women's World Championships where she picked up three assists in five games and won a silver medal.

MICHEL LAROCQUE



Larocque joined the University of Delaware in August 2025 ahead of the program's inaugural season as the team's volunteer goalie coach.

A USA Hockey Level 5 Certified Coach and Gold Level Goaltending Coach, Larocque has run his own goaltender training

company – ML28 Hockey – since 2001. He has worked with goalies of all levels as a regional goalie coach for club and scholastic programs as well as organizing camps, clinics and private lessons across multiple age ranges.

Larocque had a distinguished collegiate career at Boston University where he played 97 career games from 1995 to 1999, helping lead the Terriers to the 1997 Hockey East championship, four-straight Beanpot titles, and three NCAA Tournament appearances including an appearance in the 1997 national championship game where he made 24 saves. Larocque was a two-time All-Hockey East selection and was an All-American in 1999 as well as a Hobey Baker finalist. He also was the 1997 Hockey East Tournament MVP and selected to the 1996 Hockey East All-Rookie Team.

Originally drafted by the San Jose Sharks in the sixth round of the 1996 NHL Draft, Larocque was traded to the Chicago Blackhawks in 1999. He made his NHL debut in 2001 against Philadelphia and played in three games for the Blackhawks.

SUPPORT STAFF

Jack Davis

Devon Cummings

Alex Davisson

Dr. Clare Devine

Sport Administrator

Academic Advisor

Athletic Trainer

Sport Psychologist

Austin Mark

Jake Prettyman

Brendan Thomas

Kate Winstanley

Team Nutritionist

Equipment Manager

Athletic Communications

Strength & Conditioning Coach

UNIVERSITY OF DELAWARE

IN THE RANKINGS

The University of Delaware is ranked in the top 1.6% globally, among nearly 21,000 institutions, based on educational quality, employability, faculty quality and research. In late 2024, Wall Street Journal ranked UD at No. 10 among public universities and No. 26 among all U.S. universities based on student professional readiness and career outcomes.

Physical Therapy graduate program
No. 1 in the nation
(U.S. News & World Report)

One of 24 UD graduate programs ranked in the top-100 by U.S. News

Entrepreneurship undergraduate program
No. 3 in the Mid-Atlantic
(The Princeton Review)

Chemical Engineering undergraduate program
No. 4 in the nation
(U.S. News & World Report)

One of six UD undergraduate programs ranked in the top-100 by U.S. News

Chemical Engineering graduate program
No. 8 in the nation
(U.S. News & World Report)

One of 24 UD graduate programs ranked in the top-100 by U.S. News

Online MBA program
No. 20 out of 355 in the nation
(U.S. News & World Report)

Online Master's in Education program
No. 20 out of 313 in the nation
(U.S. News & World Report)

Nursing undergraduate program
No. 40 in the nation
(U.S. News & World Report)
A 34-spot jump from last year's ranking

BEST VALUE

UD ranks among the country's best value propositions, according to U.S. News & World Report, Wall Street Journal, Kiplinger's and Forbes. This summer, The Princeton Review ranked UD among its 209 Best Value Colleges for 2025, earning one of the publication's highest return-on-investment ratings. Money magazine awarded UD 4½ stars out of a possible five in its 2025-26 rating of America's best colleges. The University, according to Money, "stands out for its affordability" as a public college providing an excellent value for in-state students, and is considered one of the Best Colleges in the Northeast.

distinguished history

In 1743, the school that would become the University of Delaware was just a tiny institution, with a graduating class of about a dozen. Three of those graduates – **Thomas McKean**, **George Read** and **James Smith** – would go on to sign the Declaration of Independence; Read would also sign the U.S. Constitution, helping launch a new paradigm of freedom for an entire nation and a beacon of liberty for much of the world.

first in study abroad

In 1923, UD initiated a program to enhance students' learning by giving them an overseas experience. Influenced by the carnage he saw as an ambulance driver in World War I, professor **Raymond Kirkbride** believed that understanding other cultures was critical to promoting peace. His idea would grow into the first study-abroad program in the United States. Today approximately a third of all UD students participate in study abroad programs offered around the world. This year, the University celebrates the 10-year anniversary of its World Scholars Program, through which a cohort of new students experience their first UD semester abroad. These students return to UD for the spring and, as juniors, they can elect one of 40 study-abroad experiences.

introducing ud's new leadership

Interim President **Laura Carlson** and Interim Provost **Bill Farquhar** have been at the helm since July 1. Carlson joined the University of Delaware community in 2022, serving as its chief academic officer when she became the University's 12th Provost. Farquhar has been a faculty member for more than 23 years in UD's Department of Kinesiology and Applied Physiology. He most recently served as the dean of UD's College of Health Sciences.

student applications are climbing

Interest in a University of Delaware education continues to soar. UD received more than 40,000 applications for this year's class of first-year students, setting a UD record for the seventh consecutive year. Over the last year, UD hosted more than 38,000 visitors (prospective students and their families) at open houses and campus tours, and awarded more than \$200 million in financial aid to its newest students.

incorporating ai into curriculum

AI has the potential to reshape higher education. UD has applied this technology in myriad ways and continues to explore further applications for artificial intelligence – including the launch of new academic offerings like an undergraduate major, a graduate degree program and a certificate; the creation of UD's First State AI Institute; and the incorporation of generative AI into curricula.

PROMINENT ALUMNI



joe Biden '65



chris christie '84



joe flacco '08



elena delle donne '13

CAREER STATS AND HIGHS

1 • MATTIE ROBITZER

G · Jr. · 5-4

Kennett Square, Pa. / Unionville (Northeastern)

ROBITZER, Mattie

SEASON	TEAM	GP	G.	A	Points	Shots	Shot%	Pen-Min	+/-	PPG	SHG	GWG	Bik	FOW	FOL	FO%
2023-24	NE	1	0	0	0	0	.000	0 - 0	0	0	0	0	0	0	0	.000
2024-25	NE	3	0	0	0	0	.000	0 - 0	0	0	0	0	0	0	0	.000
2025-26	UD	14	0	0	0	0	.000	0 - 0	0	0	0	0	0	0	0	.000
TOTAL FOR UD		14	0	0	0	0	.000	0 - 0	0	0	0	0	0	0	0	.000
TOTAL		18	0	0	0	0	.000	0 - 0	0	0	0	0	0	0	0	.000

SEASON	TEAM	GP-GS	Minutes	GA	GAvg	Saves	Save%	W	L	T	Sho	PPG	SHG
2023-24	NE	1 - 0	0	0	0	0	.000	0	0	0	0	0	0
2024-25	NE	3 - 2	151.5	5	1.99	49	.907	1	1	0	0	1	0
2025-26	UD	14 - 14	800.09	62	4.65	555	.900	0	14	0	0	13	3
TOTAL FOR UD		14 - 14	800.09	62	4.65	555	.900	0	14	0	0	13	3
TOTAL		18 - 16	951.59	67	4.23	604	.900	1	15	0	0	14	3

Single Game Highs

Statistic	Value
Saves	63 at Mercyhurst 10/31/25

2 • LEXIE LONASK

D · Fr. · 5-8

Chandler, Ariz. / Shattuck St. Mary's [Minn.]

LONASK, Lexie

SEASON	TEAM	GP	G.	A	Points	Shots	Shot%	Pen-Min	+/-	PPG	SHG	GWG	Bik	FOW	FOL	FO%
2025-26	UD	27	1	4	5	22	.045	4 - 8	-22	0	0	0	129	0	0	.000
TOTAL		27	1	4	5	22	.045	4 - 8	-22	0	0	0	129	0	0	.000

Single Game Highs

Statistic	Value
Points	1 5 times
Goals	1 at Mercyhurst 10/31/25
Assists	1 4 times
Shots	2 7 times
Penalties	2 vs RIT 01/08/26
Penalty minutes	4 vs RIT 01/08/26
Plus/minus	1 vs Syracuse 10/17/25, at Mercyhurst 10/31/25

3 • MADISON BONAVIDA

F · Fr. · 6-0

Longmeadow, Mass. / Milton Academy

BONAVIDA, Maddie

SEASON	TEAM	GP	G.	A	Points	Shots	Shot%	Pen-Min	+/-	PPG	SHG	GWG	Bik	FOW	FOL	FO%
2025-26	UD	25	0	1	1	11	.000	7 - 14	-19	0	0	0	16	2	2	.500
TOTAL		25	0	1	1	11	.000	7 - 14	-19	0	0	0	16	2	2	.500

Single Game Highs

Statistic	Value
Points	1 vs Lindenwood 11/14/25
Assists	1 vs Lindenwood 11/14/25
Shots	2 vs Lindenwood 11/15/25, at RIT 12/05/25
Penalties	1 7 times
Penalty minutes	2 7 times
Plus/minus	1 vs LIU 09/27/25, vs Lindenwood 11/14/25

4 • TIANA MCINTYRE

D · Sr. · 5-8

Park City, Utah / Park City (Quinnipiac)

MCINTYRE, Tiana

SEASON	TEAM	GP	G.	A	Points	Shots	Shot%	Pen-Min	+/-	PPG	SHG	GWG	Bik	FOW	FOL	FO%
2022-23	QU	8	0	0	0	0	.000	0 - 0	0	0	0	0	0	0	0	.000
2023-24	QU	26	0	2	2	13	.000	5 - 10	6	0	0	0	8	0	0	.000
2024-25	QU	33	0	0	0	21	.000	0 - 0	0	0	0	0	16	0	0	.000
2025-26	UD	30	2	5	7	25	.080	10 - 20	-35	0	0	0	57	0	0	.000
TOTAL FOR UD		30	2	5	7	25	.080	10 - 20	-35	0	0	0	57	0	0	.000
TOTAL		97	2	7	9	59	.034	15 - 30	-29	0	0	0	81	0	0	.000

Single Game Highs

Statistic	Value
Points	1 9 times
Goals	1 at Brown 11/09/25, at RIT 12/05/25
Assists	1 7 times
Shots	4 at RIT 12/05/25
Penalties	3 vs Rensselaer 12/02/23
Penalty minutes	6 vs Rensselaer 12/02/23
Plus/minus	2 at Harvard 01/12/24

5 • EMMA MACINTYRE

D · Fr. · 5-4

Halifax, Nova Scotia / Stanstead College

MACINTYRE, Emma

SEASON	TEAM	GP	G.	A	Points	Shots	Shot%	Pen-Min	+/-	PPG	SHG	GWG	Bik	FOW	FOL	FO%
2025-26	UD	23	0	5	5	17	.000	9 - 21	-32	0	0	0	52	0	0	.000
TOTAL		23	0	5	5	17	.000	9 - 21	-32	0	0	0	52	0	0	.000

Single Game Highs

Statistic	Value
Points	2 at Lindenwood 01/17/26
Assists	2 at Lindenwood 01/17/26
Shots	3 vs Lindenwood 11/14/25, at Brown 11/08/25
Penalties	2 vs Penn St. 10/11/25
Penalty minutes	5 vs Mercyhurst 01/31/26
Plus/minus	1 at Lindenwood 01/16/26

6 • KACEY BLUM

F · Fr. · 5-6

McLean, Va. / McLean

BLUM, Kacey

SEASON	TEAM	GP	G.	A	Points	Shots	Shot%	Pen-Min	+/-	PPG	SHG	GWG	Bik	FOW	FOL	FO%
2025-26	UD	29	1	1	2	23	.043	1 - 2	-14	0	0	1	8	0	0	.000
TOTAL		29	1	1	2	23	.043	1 - 2	-14	0	0	1	8	0	0	.000

Single Game Highs

Statistic	Value
Points	1 vs Mercyhurst 01/31/26, vs Lindenwood 11/14/25
Goals	1 vs Lindenwood 11/14/25
Assists	1 vs Mercyhurst 01/31/26
Shots	3 vs Mercyhurst 01/30/26
Penalties	1 at Brown 11/09/25
Penalty minutes	2 at Brown 11/09/25
Plus/minus	1 at Brown 11/09/25, vs Lindenwood 11/14/25

8 • VICTORIA BORG

F · Fr. · 5-4

Burlington, Ontario / Blyth Academy

BORG, Victoria

SEASON	TEAM	GP	G.	A	Points	Shots	Shot%	Pen-Min	+/-	PPG	SHG	GWG	Bik	FOW	FOL	FO%
2025-26	UD	30	1	0	1	24	.042	6 - 12	-19	0	0	0	20	1	1	.500
TOTAL		30	1	0	1	24	.042	6 - 12	-19	0	0	0	20	1	1	.500

Single Game Highs

Statistic	Value
Points	1 vs Lindenwood 11/14/25
Goals	1 vs Lindenwood 11/14/25
Shots	2 6 times
Penalties	1 6 times
Penalty minutes	2 6 times
Plus/minus	1 vs Holy Cross 10/05/25, at RIT 12/05/25

9 • BAILEY GRAY

D · Fr. · 5-4

Plymouth, Minn. / Benilde-St. Margaret's

GRAY, Bailey

SEASON	TEAM	GP	G.	A	Points	Shots	Shot%	Pen-Min	+/-	PPG	SHG	GWG	Bik	FOW	FOL	FO%
2025-26	UD	29	1	3	4	34	.029	13 - 37	-30	1	0	0	68	0	0	.000
TOTAL		29	1	3	4	34	.029	13 - 37	-30	1	0	0	68	0	0	.000

Single Game Highs

Statistic	Value
Points	2 at Lindenwood 01/17/26
Goals	1 at Lindenwood 01/17/26
Assists	1 vs Holy Cross 10/05/25, at Syracuse 01/02/26, at Lindenwood 01/17/26
Shots	4 vs LIU 09/27/25
Power-play Goals	1 at Lindenwood 01/17/26
Penalties	2 vs RIT 01/08/26, at Mercyhurst 10/31/25
Penalty minutes	15 at Mercyhurst 10/31/25
Plus/minus	1 vs LIU 09/26/25, at Lindenwood 01/16/26, vs Mercyhurst 01/31/26

CAREER STATS AND HIGHS

10 • DANICA MARK

F • Jr. • 5-7

Duluth, Minn. / Duluth Marshall School (Union)

MARK, Danica

SEASON	TEAM	GP	G	A	Points	Shots	Shot%	Pen-Min	+/-	PPG	SHG	GWG	Bik	FOW	FOL	FO%
2023-24	UNI	8	0	0	0	4	.000	1 - 2	0	0	0	0	2	16	19	.457
2024-25	UNI	9	1	2	3	10	.100	2 - 4	1	0	0	0	2	18	20	.474
2025-26	UD	30	3	0	3	23	.130	0 - 0	-30	2	0	0	24	35	69	.337
TOTAL FOR UD	30	3	0	3	23	.130	0 - 0	-30	2	0	0	0	24	35	69	.337
TOTAL	47	4	2	6	37	.108	3 - 6	-29	2	0	0	0	28	69	108	.390

Single Game Highs

Statistic	Value
Points	1 6 times
Goals	1 4 times
Assists	1 vs RIT 10/04/24, vs RIT 10/05/24
Shots	4 vs RIT 10/04/24
Power-play Goals	1 at RIT 12/06/25, at Lindenwood 01/17/26
Penalties	1 vs Holy Cross 10/07/23, at Robert Morris 09/27/24, at Vermont 11/20/24
Penalty minutes	2 vs Holy Cross 10/07/23, at Robert Morris 09/27/24, at Vermont 11/20/24
Plus/minus	1 5 times

11 • CHARLIE VOGEL

F • Fr. • 5-6

Sun Prairie, Wisc. / St. Paul's School

VOGEL, Charlotte

SEASON	TEAM	GP	G	A	Points	Shots	Shot%	Pen-Min	+/-	PPG	SHG	GWG	Bik	FOW	FOL	FO%
2025-26	UD	28	0	1	1	13	.000	3 - 6	-17	0	0	0	5	0	3	.000
TOTAL	28	0	1	1	13	.000	3 - 6	-17	0	0	0	0	5	0	3	.000

Single Game Highs

Statistic	Value
Points	1 at Lindenwood 01/17/26
Assists	1 at Lindenwood 01/17/26
Shots	2 vs Lindenwood 11/14/25, at Union (NY) 11/29/25, at Syracuse 01/03/26
Penalties	1 vs Holy Cross 10/04/25, vs Robert Morris 10/25/25, at Mercyhurst 10/31/25
Penalty minutes	2 vs Holy Cross 10/04/25, vs Robert Morris 10/25/25, at Mercyhurst 10/31/25

13 • KAITLIN FINNEGAN

F • Gr. • 5-4

Tecumseh, Kan. / Kansas Connections Academy (Lindenwood)

FINNEGAN, Kaitlin

SEASON	TEAM	GP	G	A	Points	Shots	Shot%	Pen-Min	+/-	PPG	SHG	GWG	Bik	FOW	FOL	FO%
2020-21	Linden	14	0	1	1	9	.000	5 - 10	-3	0	0	0	5	12	34	.261
2021-22	Linden	26	1	5	6	28	.036	1 - 2	-22	0	0	0	8	77	112	.407
2022-23	Linden	32	3	2	5	48	.063	3 - 6	-15	0	0	0	25	20	31	.392
2023-24	Linden	31	3	8	11	42	.071	8 - 16	-15	1	0	0	17	3	9	.250
2024-25	Linden	4	0	0	0	0	.000	2 - 4	-3	0	0	0	1	1	0	1.000
2025-26	UD	27	7	3	10	51	.137	2 - 4	-7	1	1	0	59	25	23	.521
TOTAL FOR UD	27	7	3	10	51	.137	2 - 4	-7	1	1	0	0	59	25	23	.521
TOTAL	134	14	19	33	178	.079	21 - 42	-65	2	1	0	0	115	138	209	.398

Single Game Highs

Statistic	Value
Points	2 5 times
Goals	2 vs Lindenwood 11/14/25
Assists	2 at Brown 11/09/25, vs Mercyhurst 12/01/23
Shots	6 vs LIU 09/26/25
Power-play Goals	1 vs Robert Morris 02/17/24, at Syracuse 01/02/26
Short-Handed Goals	1 vs Lindenwood 11/14/25
Penalties	2 vs Stonehill 11/25/23, at RIT 01/11/21, vs St. Cloud St. 09/21/24
Penalty minutes	4 vs Stonehill 11/25/23, at RIT 01/11/21, vs St. Cloud St. 09/21/24
Plus/minus	3 at RIT 10/27/23

15 • WREN ABBOUD

F • Fr. • 5-2

Weymouth, Mass. / Thayer Academy

ABBOUD, Wren

SEASON	TEAM	GP	G	A	Points	Shots	Shot%	Pen-Min	+/-	PPG	SHG	GWG	Bik	FOW	FOL	FO%
2025-26	UD	30	0	1	1	19	.000	10 - 20	-29	0	0	0	17	140	171	.450
TOTAL	30	0	1	1	19	.000	10 - 20	-29	0	0	0	0	17	140	171	.450

Single Game Highs

Statistic	Value
Points	1 at RIT 12/06/25
Assists	1 at RIT 12/06/25
Shots	2 4 times
Penalties	2 vs Lindenwood 11/15/25
Penalty minutes	4 vs Lindenwood 11/15/25

16 • EVA MAYO

F/D • Fr. • 5-6

Honeoye Falls, N.Y. / Kent School

MAYO, Eva

SEASON	TEAM	GP	G	A	Points	Shots	Shot%	Pen-Min	+/-	PPG	SHG	GWG	Bik	FOW	FOL	FO%
2025-26	UD	28	0	5	5	14	.000	6 - 12	-21	0	0	0	37	0	1	.000
TOTAL	28	0	5	5	14	.000	6 - 12	-21	0	0	0	0	37	0	1	.000

Single Game Highs

Statistic	Value
Points	1 5 times
Assists	1 5 times
Shots	2 at Brown 11/08/25
Penalties	1 6 times
Penalty minutes	2 6 times
Plus/minus	1 4 times

17 • SUVINA HEIDT

D • Fr. • 5-6

Aurora, Colo. / Winchendon School [Mass.]

HEIDT, Suvina

SEASON	TEAM	GP	G	A	Points	Shots	Shot%	Pen-Min	+/-	PPG	SHG	GWG	Bik	FOW	FOL	FO%
2025-26	UD	25	0	0	0	5	.000	5 - 10	-17	0	0	0	29	0	1	.000
TOTAL	25	0	0	0	5	.000	5 - 10	-17	0	0	0	0	29	0	1	.000

Single Game Highs

Statistic	Value
Shots	1 5 times
Penalties	2 vs Syracuse 10/18/25
Penalty minutes	4 vs Syracuse 10/18/25
Plus/minus	1 4 times

18 • FRANCESCA BARRESI

F • Fr. • 5-6

Ottawa, Ontario / St. Joseph Catholic

BARRESI, Francesca

SEASON	TEAM	GP	G	A	Points	Shots	Shot%	Pen-Min	+/-	PPG	SHG	GWG	Bik	FOW	FOL	FO%
2025-26	UD	30	3	5	8	58	.052	7 - 14	-34	2	0	0	43	162	218	.426
TOTAL	30	3	5	8	58	.052	7 - 14	-34	2	0	0	0	43	162	218	.426

Single Game Highs

Statistic	Value
Points	2 vs RIT 01/08/26, at Lindenwood 01/16/26
Goals	2 vs RIT 01/08/26
Assists	2 at Lindenwood 01/16/26
Shots	5 vs RIT 01/08/26
Power-play Goals	2 vs RIT 01/08/26
Penalties	2 at Union (NY) 11/28/25
Penalty minutes	4 at Union (NY) 11/28/25

19 • KATELYNN CHARLTON

F • Fr. • 5-7

Brampton, Ontario / St. Martins Catholic Secondary

CHARLTON, Katelynn

SEASON	TEAM	GP	G	A	Points	Shots	Shot%	Pen-Min	+/-	PPG	SHG	GWG	Bik	FOW	FOL	FO%
2025-26	UD	30	5	5	10	94	.053	5 - 10	-22	2	0	1	19	1	3	.250
TOTAL	30	5	5	10	94	.053	5 - 10	-22	2	0	1	19	1	3	.250	

Single Game Highs

Statistic	Value
Points	2 vs Holy Cross 10/04/25
Goals	2 vs Holy Cross 10/04/25
Assists	1 5 times
Shots	8 at Brown 11/08/25
Power-play Goals	1 vs Holy Cross 10/05/25, vs RIT 01/09/26
Penalties	2 at Penn St. 01/24/26
Penalty minutes	4 at Penn St. 01/24/26
Plus/minus	1 at Mercyhurst 10/31/25, vs Lindenwood 11/14/25

CAREER STATS AND HIGHS

20 • MEERA SMITH

F • Fr. • 5-6

Victoria, British Columbia / Shawnigan Lake School

SMITH, Meera

SEASON	TEAM	GP	G	A	Points	Shots	Shot%	Pen-Min	+/-	PPG	SHG	GWG	Bik	FOW	FOL	FO%
2025-26	UD	30	4	2	6	20	.200	5 - 10	-22	2	0	0	31	204	299	.406
TOTAL		30	4	2	6	20	.200	5 - 10	-22	2	0	0	31	204	299	.406

Single Game Highs

Statistic	Value
Points	2 vs Lindenwood 11/14/25
Goals	1 4 times
Assists	1 at Mercyhurst 10/31/25, vs Lindenwood 11/14/25
Shots	2 5 times
Power-play Goals	1 at RIT 12/06/25, at Lindenwood 01/17/26
Penalties	2 at Mercyhurst 11/01/25
Penalty minutes	4 at Mercyhurst 11/01/25
Plus/minus	1 at Brown 11/09/25, at RIT 12/06/25

21 • BILLI ROMAN

F • Fr. • 5-3

Hockessin, Del. / The Tatnall School

ROMAN, Billi

SEASON	TEAM	GP	G	A	Points	Shots	Shot%	Pen-Min	+/-	PPG	SHG	GWG	Bik	FOW	FOL	FO%
2025-26	UD	30	2	0	2	11	.182	2 - 4	-11	0	0	0	16	41	113	.266
TOTAL		30	2	0	2	11	.182	2 - 4	-11	0	0	0	16	41	113	.266

Single Game Highs

Statistic	Value
Points	1 vs LIU 09/27/25, at Mercyhurst 10/31/25
Goals	1 vs LIU 09/27/25, at Mercyhurst 10/31/25
Shots	3 vs LIU 09/27/25
Penalties	1 vs Penn St. 10/11/25, at Brown 11/08/25
Penalty minutes	2 vs Penn St. 10/11/25, at Brown 11/08/25
Plus/minus	1 4 times

24 • TAYLOR SCHOOLEY

D • Gr. • 5-6

Moon Township, Pa. / Moon Area

SCHOOLEY, Taylor

SEASON	TEAM	GP	G	A	Points	Shots	Shot%	Pen-Min	+/-	PPG	SHG	GWG	Bik	FOW	FOL	FO%
2025-26	UD	27	0	1	1	0	.000	4 - 8	-19	0	0	0	27	0	0	.000
TOTAL		27	0	1	1	0	.000	4 - 8	-19	0	0	0	27	0	0	.000

Single Game Highs

Statistic	Value
Points	1 at Brown 11/09/25
Assists	1 at Brown 11/09/25
Penalties	1 4 times
Penalty minutes	2 4 times
Plus/minus	1 at Brown 11/09/25, vs Lindenwood 11/14/25

27 • IDA HAAVE

F • Fr. • 5-6

Kristiansand, Norway / Norges Toppidrettsgymnas Lillehammer

HAAVE, Ida

SEASON	TEAM	GP	G	A	Points	Shots	Shot%	Pen-Min	+/-	PPG	SHG	GWG	Bik	FOW	FOL	FO%
2025-26	UD	30	1	2	3	17	.059	2 - 4	-24	0	0	0	40	86	122	.413
TOTAL		30	1	2	3	17	.059	2 - 4	-24	0	0	0	40	86	122	.413

Single Game Highs

Statistic	Value
Points	1 at Mercyhurst 10/31/25, at Lindenwood 01/16/26, vs Mercyhurst 01/31/26
Goals	1 vs Mercyhurst 01/31/26
Assists	1 at Mercyhurst 10/31/25, at Lindenwood 01/16/26
Shots	3 vs LIU 09/26/25, vs LIU 09/27/25
Penalties	1 vs Robert Morris 10/24/25, vs RIT 01/09/26
Penalty minutes	2 vs Robert Morris 10/24/25, vs RIT 01/09/26
Plus/minus	2 vs Lindenwood 11/14/25

31 • CHARLOTTE PAYNE

G • Fr. • 5-8

Oakville, Ontario / Abbey Park

PAYNE, Charlotte

SEASON	TEAM	GP	G	A	Points	Shots	Shot%	Pen-Min	+/-	PPG	SHG	GWG	Bik	FOW	FOL	FO%
2025-26	UD	17	0	0	0	0	.000	0 - 0	0	0	0	0	1	0	0	.000
TOTAL		17	0	0	0	0	.000	0 - 0	0	0	0	0	1	0	0	.000

SEASON	TEAM	GP-GS	Minutes	GA	GAAvg	Saves	Save%	W	L	T	Sho	PPG	SHG
2025-26	UD	17 - 16	999.59	63	3.79	681	.915	2	14	0	0	9	3
TOTAL		17 - 16	999.59	63	3.79	681	.915	2	14	0	0	9	3

Single Game Highs

Statistic	Value
Saves	51 vs Penn St. 10/10/25, at Brown 11/09/25

delaware

STARTERS BY GAME

	LEFT WING	CENTER	RIGHT WING	LEFT DEFENSE	RIGHT DEFENSE	GOALIE
LIU	Charlton	Haave	Finnegan	McIntyre	MacIntyre	Robitzer
LIU	Borg	Smith	Barresi	McIntyre	MacIntyre	Payne
Holy Cross	Charlton	Haave	Finnegan	Gray	Lonask	Robitzer
Holy Cross	Borg	Smith	Barresi	McIntyre	Lonask	Payne
Penn State	Charlton	Haave	Finnegan	McIntyre	Lonask	Payne
Penn State	Charlton	Haave	Finnegan	Gray	MacIntyre	Robitzer
Syracuse	Charlton	Haave	Finnegan	McIntyre	Lonask	Payne
Syracuse	Charlton	Haave	Finnegan	McIntyre	Lonask	Robitzer
Robert Morris	Charlton	Barresi	Finnegan	McIntyre	Lonask	Payne
Robert Morris	Borg	Smith	Haave	McIntyre	Lonask	Robitzer
@ Mercyhurst	Charlton	Barresi	Finnegan	McIntyre	Lonask	Robitzer
@ Mercyhurst	Borg	Smith	Haave	McIntyre	Lonask	Payne
@ Brown	Charlton	Barresi	Finnegan	McIntyre	Lonask	Robitzer
@ Brown	Borg	Smith	Voge	McIntyre	Lonask	Payne
Lindenwood	Charlton	Barresi	Finnegan	McIntyre	Lonask	Payne
Lindenwood	Charlton	Barresi	Finnegan	McIntyre	Lonask	Robitzer
@ Union	Haave	Abboud	Mark	McIntyre	Lonask	Payne
@ Union	Borg	Smith	Voge	Gray	MacIntyre	Robitzer
@ RIT	Charlton	Barresi	Finnegan	McIntyre	Mayo	Payne
@ RIT	Haave	Abboud	Mark	McIntyre	MacIntyre	Robitzer
@ Syracuse	Charlton	Barresi	Finnegan	McIntyre	Lonask	Payne
@ Syracuse	Haave	Abboud	Mark	McIntyre	Lonask	Robitzer
RIT	Charlton	Abboud	Finnegan	McIntyre	Lonask	Payne
RIT	Charlton	Abboud	Finnegan	McIntyre	Lonask	Robitzer
@ Lindenwood	Charlton	Abboud	Finnegan	McIntyre	MacIntyre	Payne
@ Lindenwood	Charlton	Abboud	Finnegan	McIntyre	Lonask	Payne
@ Penn State	Charlton	Abboud	Blum	Gray	MacIntyre	Payne
@ Penn State	Haave	Barresi	Mark	McIntyre	Lonask	Robitzer
Mercyhurst	Haave	Abboud	Charlton	Gray	MacIntyre	Payne
Mercyhurst	Borg	Abboud	Charlton	McIntyre	Lonask	Robitzer

@ Robert Morris

@ Robert Morris

delaware

GAME-BY-GAME STATISTICAL LEADERS

OPP	GOALS	ASSISTS	SOG	BLOCKS	FO WINS	SAVES
LIU	Barresi (1)	--	Finnegan (6)	7 players (2)	Haave (15)	Robitzer (27)
LIU	Finnegan/Roman (1)	Charlton/Lonask/McIntyre (1)	Charlton (7)	Lonask/MacIntyre (2)	Smith (12)	Payne (22)
Holy Cross	Charlton (2)	Finnegan/Lonask (1)	Charlton (3)	Finnegan/Lonask (5)	Haave (11)	Robitzer (57)
Holy Cross	Smith/Charlton (1)	MacIntyre/Gray/Lonask (1)	Barresi/Charlton/Roman (2)	MacIntyre (5)	Haave (11)	Payne (49)
Penn State	--	--	10 players (1)	Lonask/Gray/Barresi (4)	Haave (13)	Payne (51)
Penn State	--	--	Charlton (1)	Lonask/Barresi (5)	Smith (12)	Robitzer (62)
Syracuse	Finnegan (1)	Charlton (1)	Gray (3)	Gray (4)	Smith (9)	Payne (48)
Syracuse	--	--	Mark/Barresi (3)	Lonask (6)	Smith/Haave (6)	Robitzer (30)
Robert Morris	--	--	Barresi (3)	Lonask (4)	Barresi (12)	Payne (38)
Robert Morris	--	--	Charlton (6)	Gray (3)	Barresi (13)	Robitzer (43)
@ Mercyhurst	Roman/Lonask (1)	Haave/Smith/McIntyre (1)	Charlton (3)	Lonask (10)	Barresi (13)	Robitzer (63)
@ Mercyhurst	--	--	Finnegan/Barresi (3)	Lonask (9)	Abboud (4)	Payne (50)
@ Brown	--	--	Charlton (8)	Gray (5)	Barresi (8)	Robitzer (34)
@ Brown	McIntyre/Charlton (1)	Finnegan (2)	Charlton (4)	Lonask (11)	Barresi (8)	Payne (51)
Lindenwood	Finnegan (2)	6 players (1)	Finnegan (4)	Lonask (8)	Smith (11)	Payne (32)
Lindenwood	--	--	Charlton (5)	Lonask (4)	Barresi (13)	Payne (24)
@ Union	--	--	Charlton (4)	Lonask/Bonavita/MacIntyre (3)	Smith (9)	Payne (33)
@ Union	--	--	Barresi (4)	Abboud/Smith (3)	Smith (9)	Robitzer (36)
@ RIT	Finnegan/McIntyre (1)	Barresi/MacIntyre (1)	McIntyre (4)	McIntyre/Gray (5)	Barresi (7)	Payne (41)
@ RIT	Smith/Mark (1)	4 players (1)	Barresi (4)	4 players (3)	Abboud (11)	Robitzer (46)
@ Syracuse	Finnegan (1)	Gray/Mayo (1)	4 players (2)	Lonask/Finnegan (4)	Barresi (6)	Payne (36)
@ Syracuse	--	--	Barresi (4)	McIntyre (4)	Abboud (7)	Robitzer (37)
RIT	Barresi (2)	Mayo (1)	Barresi/Charlton (5)	Lonask (8)	Smith (10)	Payne (37)
RIT	Charlton (1)	McIntyre/Lonask (1)	Finnegan (4)	Heidt (3)	Abboud (10)	Robitzer (39)
@ Lindenwood	Finnegan/Mark (1)	Barresi (2)	Finnegan (4)	Lonask (5)	Abboud (9)	Payne (39)
@ Lindenwood	Gray/Smith/Mark (1)	MacIntyre (2)	4 players (2)	Lonask (4)	Abboud/Barresi/Smith (5)	Payne (46)
@ Penn State	--	--	Abboud (2)	Lonask (4)	Abboud/Smith (6)	Payne (40)
@ Penn State	--	--	Charlton (3)	Lonask (4)	Abboud (10)	Robitzer (38)
Mercyhurst	--	--	Barresi/Charlton (4)	Lonask/MacIntyre (3)	Abboud (9)	Payne (44)
Mercyhurst	Haave (1)	Barresi/Blum (1)	Charlton (4)	Lonask (6)	Abboud (10)	Robitzer (32)

@ Robert Morris

@ Robert Morris

delaware

SCORING PLAYS

DATE	OPPONENT	Goal Type	GOAL SCORER	ASSIST(S)	TIME & PERIOD	SCORE
9/26/25	LIU	Even	Barresi (1)	--	12:04, 3rd period	2-1, LIU
9/27/25	LIU	Even	Finnegan (1)	Charlton (1)	9:53, 1st period	1-0, UD
9/27/25	LIU	Even	Roman (1)	Lonask (1), McIntyre (1)	10:31, 2nd period	2-0, UD
10/4/25	Holy Cross	Even	Charlton (1)	Finnegan (1)	7:52, 2nd period	1-0, UD
10/4/25	Holy Cross	Even	Charlton (2)	Lonask (2)	17:44, 2nd period	2-1, UD
10/5/25	Holy Cross	Even	Smith (1)	MacIntyre (1)	5:52, 2nd period	1-1
10/5/25	Holy Cross	Power Play	Charlton (3)	Gray (1), Lonask (3)	9:49, 2nd period	2-1, UD
10/17/25	Syracuse	Even	Finnegan (2)	Charlton (2)	11:42, 2nd period	1-1
10/31/25	@RV/RV Mercyhurst	Even	Roman (2)	Haave (1)	11:03, 2nd period	1-1
10/31/25	@RV/RV Mercyhurst	6-5	Lonask (1)	Smith (1), McIntyre (2)	19:57, 3rd period	2-2
11/9/25	@15/15 Brown	Even	McIntyre (1)	Finnegan (2)	5:31, 2nd period	2-1, Brown
11/9/25	@15/15 Brown	Even	Charlton (4)	Finnegan (3), Schooley (1)	15:05, 2nd period	2-2
11/14/25	Lindenwood	Even	Finnegan (3)	Barresi (1), Charlton (3)	7:30, 1st period	1-0, UD
11/14/25	Lindenwood	Shorthanded	Finnegan (4)	--	19:59, 1st period	2-0, UD
11/14/25	Lindenwood	Even	Borg (1)	Smith (2), McIntyre (3)	19:21, 2nd period	3-1, UD
11/14/25	Lindenwood	Even	Blum (1)	Bonavita (1), Mayo (1)	2:38, 3rd period	4-2, UD
11/14/25	Lindenwood	Empty Net	Smith (2)	--	19:55, 3rd period	5-3, UD
12/5/25	@RIT	Even	Finnegan (5)	Barresi (2), MacIntyre (2)	3:01, 1st period	1-0, UD
12/5/25	@RIT	Even	McIntyre (2)	--	1:32, 2nd period	2-0, UD
12/6/25	@RIT	Power Play	Smith (3)	Mayo (2), MacIntyre (3)	5:48, 3rd period	3-1, RIT
12/6/25	@RIT	Power Play	Mark (1)	McIntyre (4), Abboud (1)	12:06, 3rd period	4-2, RIT
1/2/26	@Syracuse	Power Play	Finnegan (6)	Gray (2), Mayo (3)	3:20, 1st period	1-0, UD
1/8/26	RIT	Power Play	Barresi (2)	Mayo (4)	13:58, 2nd period	1-1
1/8/26	RIT	Power Play	Barresi (3)	--	15:45, 2nd period	2-1, UD
1/9/26	RIT	Power Play	Charlton (5)	McIntyre (5), Lonask (4)	10:41, 1st period	1-1
1/16/26	@Lindenwood	Even	Finnegan (7)	Barresi (3), Charlton (4)	7:03, 1st period	1-0, UD
1/16/26	@Lindenwood	Even	Mark (2)	Barresi (4), Haave (2)	4:13, 3rd period	3-2, LU
1/17/26	@Lindenwood	Power Play	Gray (1)	MacIntyre (4), Charlton (5)	13:14, 2nd period	4-1, LU
1/17/26	@Lindenwood	Power Play	Smith (4)	Mayo (5), Voge (1)	17:57, 2nd period	5-2, LU
1/17/26	@Lindenwood	Power Play	Mark (3)	Gray (3), MacIntyre (5)	6:37, 3rd period	5-3, LU
1/31/25	Mercyhurst	Even	Haave (1)	Barresi (5), Blum (1)	12:14, 3rd period	5-1, MU



delaware SEASON STATS



2025-26 Delaware Women's Ice Hockey Combined Team Statistics All games

Team Results

Date	Opponent	Score	Att.
09/26/2025	LIU	L 1-4	752
09/27/2025	LIU	L 2-5	336
10/04/2025	Holy Cross	L 2-5	363
10/05/2025	Holy Cross	W 2-1	246
* 10/10/2025	Penn St.	L 0-5	373
* 10/11/2025	Penn St.	L 0-7	350
* 10/17/2025	Syracuse	Lot 1-2	292
* 10/18/2025	Syracuse	L 0-1	236
* 10/24/2025	Robert Morris	L 0-5	247
* 10/25/2025	Robert Morris	L 0-5	296
* 10/31/2025	at Mercyhurst	Lot 2-3	376
* 11/01/2025	at Mercyhurst	L 0-4	245
11/08/2025	at Brown	L 0-3	387
11/09/2025	at Brown	Lot 2-3	211
* 11/14/2025	Lindenwood	W 5-3	282
* 11/15/2025	Lindenwood	L 0-5	260
11/28/2025	at Union (NY)	L 0-7	289
11/29/2025	at Union (NY)	L 0-3	234
* 12/05/2025	at RIT	L 2-5	470
* 12/06/2025	at RIT	L 2-4	677
* 01/02/2026	at Syracuse	L 1-3	144
* 01/03/2026	at Syracuse	L 0-4	130
* 01/08/2026	RIT	L 2-3	303
* 01/09/2026	RIT	L 1-8	266
* 01/16/2026	at Lindenwood	L 2-3	167
* 01/17/2026	at Lindenwood	L 3-6	216
* 01/23/2026	at Penn St.	L 0-5	683
* 01/24/2026	at Penn St.	L 0-7	806
* 01/30/2026	Mercyhurst	L 0-4	368
* 01/31/2026	Mercyhurst	L 1-6	359

Team Statistics

	UD	OPP
SHOT STATISTICS		
Goals-Shot attempts	31-481	129-1365
Shot pct.	.064	.095
Goals/Game	1.03	4.30
Shots/Game	16.03	45.50
POWER PLAYS		
Goals-Power Plays	10-108	22-92
Conversion pct.	.093	.239
Shot Attempts	122	204
Shot pct.	.082	.108
SHORT-HANDED		
Goals-Shot attempts	1-6	6-32
Shot pct.	.167	.188
GOAL BREAKDOWN		
Power Play	10	22
Short-handed	1	6
Empty net	1	4
Penalty	0	0
Unassisted	5	17
Overtime	0	3
Delayed Penalty	0	0
Game winning	2	28
First Goal	6	24
Game Tying Goal	0	0
Extra Attacker	1	0
BLOCKS		
Blocks	698	210
Blocks/Game	23.27	7.00
PENALTIES		
Number	102	119
Minutes	218	271
Penalties/Game	3.40	3.97
Pen minutes/Game	7.27	9.03
FACEOFFS (W-L)		
Faceoff W-L pct.	697-1026	1026-697
	.405	.595
SHOOTOUTS (Made-Att)	0-0	0-0

Game Records

Record	Overall	Home	Away	Neutral
ALL GAMES	2-28-0	2-14-0	0-14-0	0-0-0
CONFERENCE	1-21-0	1-11-0	0-10-0	0-0-0
NON-CONFERENCE	1-7-0	1-3-0	0-4-0	0-0-0

# Player	GP	Shots					PEN-MIN	PP SH	BLK	Faceoffs			
		G	A	PTS	SH	SH%				FOW	FOL	FO%	
13 Finnegan, Kaitlin	27	7	3	10	51	.137	2-4	1	1	59	25	23	.521
19 Charlton, Katelynn	30	5	5	10	94	.053	5-10	2	0	19	1	3	.250
18 Barresi, Francesca	30	3	5	8	58	.052	7-14	2	0	43	162	218	.426
4 McIntyre, Tiana	30	2	5	7	25	.080	10-20	0	0	57	0	0	.000
20 Smith, Meera	30	4	2	6	20	.200	5-10	2	0	31	204	299	.406
2 Lonask, Lexie	27	1	4	5	22	.045	4-8	0	0	129	0	0	.000
5 MacIntyre, Emma	23	0	5	5	17	.000	9-21	0	0	52	0	0	.000
16 Mayo, Eva	28	0	5	5	14	.000	6-12	0	0	37	0	1	.000
9 Gray, Bailey	29	1	3	4	34	.029	13-37	1	0	68	0	0	.000
10 Mark, Danica	30	3	0	3	23	.130	0-0	2	0	24	35	69	.337
27 Haave, Ida	30	1	2	3	17	.059	2-4	0	0	40	86	122	.413
21 Roman, Billi	30	2	0	2	11	.182	2-4	0	0	16	41	113	.266
6 Blum, Kacey	29	1	1	2	23	.043	1-2	0	0	8	0	0	.000
8 Borg, Victoria	30	1	0	1	24	.042	6-12	0	0	20	1	1	.500
15 Abboud, Wren	30	0	1	1	19	.000	10-20	0	0	17	140	171	.450
11 Voge, Charlotte	28	0	1	1	13	.000	3-6	0	0	5	0	3	.000
3 Bonavita, Maddie	25	0	1	1	11	.000	7-14	0	0	16	2	2	.500
24 Schooley, Taylor	27	0	1	1	0	.000	4-8	0	0	27	0	0	.000
17 Heidt, Suvina	25	0	0	0	5	.000	5-10	0	0	29	0	1	.000
1 Robitzer, Mattie	14	0	0	0	0	.000	0-0	0	0	0	0	0	.000
31 Payne, Charlotte	17	0	0	0	0	.000	0-0	0	0	1	0	0	.000
TM TEAM	30	0	0	0	0	.000	1-2	0	0	0	0	0	.000
Totals	30	31	44	75	481	.064	102-218	10	1	698	697	1026	.405
Opponents	30	129	197	326	1365	.095	119-271	22	6	210	1026	697	.595

# Player	GP	MIN	GA	GA AVG	SAVES	SAVES%	W-L-T-SHO
1 Robitzer, Mattie	14	800:05	62	4.65	555	.900	0-14-0-0
31 Payne, Charlotte	17	999:35	63	3.78	681	.915	2-14-0-0
TM EMPTY NET	-	10:08	4	23.68	0	.000	0-0-0-0
Totals	30	1809:48	129	4.28	1236	.905	2-28-0-0
Opponents	30	1809:48	31	1.03	450	.936	28-2-0-14

Attendance Summary

	UD	Opponents
Total	5329	5035
Dates/Avg Per Date	16 / 333	14 / 360
Neutral Site #/Avg	0 / 0	

Goals by Periods

Team	1st	2nd	3rd	OT	TOTAL
UD	7	15	9	0	31
Opponents	34	45	47	3	129

Shots by Periods

Team	1st	2nd	3rd	OT	TOTAL
UD	160	142	175	4	481
Opponents	442	480	435	8	1365

Saves by Periods

Team	1st	2nd	3rd	OT	TOTAL
UD	408	435	388	5	1236
Opponents	153	127	166	4	450

delaware NCAA RANKINGS

Statistic	National Rank	Conference Rank	Value	National Leader	Value	Conference Leader	Value
Assists (45 ranked)	44	7	44	Wisconsin	264	Penn St.	202
Goals (45 ranked)	44	7	31	Wisconsin	155	Penn St.	130
Penalty Killing Pct. (45 ranked)	38	6	0.761	Wisconsin	0.921	Mercyhurst	0.862
Power Play Goals (45 ranked)	34	7	10	RIT Wisconsin	30 30	RIT	30
Power-Play Percentage (45 ranked)	41	7	0.093	Wisconsin	0.330	RIT	0.309
Scoring Defense (45 ranked)	44	7	4.30	Penn St.	1.30	Penn St.	1.30
Scoring Margin (45 ranked)	44	7	-3.27	Wisconsin	4.18	Penn St.	3.03
Scoring Offense (45 ranked)	44	7	1.03	Wisconsin	5.54	Penn St.	4.33
Short-Handed Goals (22 ranked)	22	5	1	Penn St. Saint Anselm	8 8	Penn St.	8
Team Assists (0 ranked)							
Team Faceoff win percentage (45 ranked)	44	7	0.405	Ohio St.	0.604	Penn St.	0.569
Team Goals Against Average (30 ranked)				Penn St.	1.297	Penn St.	1.297
Team Penalty Minutes Per Game (45 ranked)	27	7	7.27	Ohio St.	13.89	Robert Morris	10.23
Team Points (45 ranked)	44	7	75	Wisconsin	419	Penn St.	332
Team Saves (45 ranked)	2	1	1,236	Saint Michael's	1,292	Delaware	1,236
Team Shutouts (39 ranked)				Penn St.	13	Penn St.	13
Tm. Short-Handed Goals (0 ranked)							
Winning Percentage (45 ranked)	44	7	0.067	Ohio St. Wisconsin	0.893 0.893	Penn St.	0.867

delaware NCAA RANKINGS

Statistic	Player	National Rank	Conference Rank	Value	National Leader	Value	Conference Leader	Value
Assists per Game (49 ranked)					Caroline Harvey, Wisconsin	1.42	Tessa Janecke, Penn St.	0.81
Faceoff wins (249 ranked)	Meera Smith Francesca Barresi Wren Abboud Ida Haave Billi Roman Danica Mark Kaitlin Finnegan	66 90 107 148 201 210 231	10 14 18 25 36 37 41	204 162 140 86 41 35 25	Jessica MacKinnon, Robert Morris	419	Jessica MacKinnon, Robert Morris	419
Game Winning Goals (13 ranked)					7 players tied	6	Katelyn Roberts, Penn St.	6
Goalie Winning Pct. (24 ranked)					Samson Frey, Yale	1.000	Katie DeSa, Penn St.	0.909
Goals Against Average (25 ranked)					Samson Frey, Yale	0.969	Katie DeSa, Penn St.	1.239
Goals per Game (49 ranked)					Abbey Murphy, Minnesota	1.38	Grace Outwater, Penn St.	0.74
Penalties (80 ranked)	Bailey Gray Wren Abboud Tiana McIntyre	33 80 80	8 18 18	13 10 10	Abbey Murphy, Minnesota	23	Charlotte Hallett, Syracuse	21
Points per Game (50 ranked)					Abbey Murphy, Minnesota	2.35	Tessa Janecke, Penn St.	1.54
Power Play Goals (13 ranked)					Carina DiAntonio, Yale	9	Tessa Janecke, Penn St. Julia Perjus, Mercyhurst Emma Pickering, RIT	6 6 6
Save Percentage (60 ranked)	Charlotte Payne Mattie Robitzer	43 53	6 8	0.915 0.900	Ainsley Tuffy, Harvard	0.956	Katie DeSa, Penn St.	0.934
Short-Handed Goals (9 ranked)	Kaitlin Finnegan	9	4	1	Brooklyn Schneiderhan, Saint Anselm	5	Maddy Christian, Penn St. Tessa Janecke, Penn St. Grace Outwater, Penn St.	2 2 2
Shutouts (16 ranked)					Katie DeSa, Penn St.	9	Katie DeSa, Penn St.	9

delaware TV ROSTER



1
MATTIE ROBITZER
Jr.
G | 5-4
Kennett Square, Pa.
Unionville
(Northeastern)
@m.robitzer



2
LEXIE LONASK
Fr.
D | 5-8
Chandler, Ariz.
Shattuck St. Mary's
@lexie.lonask



3
MADISON BONAVITA
Fr.
F | 6-0
Longmeadow, Mass.
Milton Academy
@bonavita_maddie



4
TIANA MCINTYRE
Sr.
D | 5-8
Park City, Utah
Park City
(Quinnipiac)
@tiana.mcintyre4



5
EMMA MACINTYRE
Fr.
D | 5-4
Halifax, Nova Scotia
Stanstead College
@emma_macintyre5



6
KACEY BLUM
Fr.
F | 5-6
McLean, Va.
McLean
@kacey.blum



8
VICTORIA BORG
Fr.
F | 5-4
Burlington, Ontario
Blyth Academy
@victoriaborgg



9
BAILEY GRAY
Fr.
D | 5-4
Plymouth, Minn.
Benilde-St. Margaret's
@baileygray9



10
DANICA MARK
Jr.
F | 5-7
Duluth, Minn.
Duluth Marshall School
(Union)
@danica.mark



11
CHARLIE VOGUE
Fr.
F | 5-6
Sun Prairie, Wis.
St. Paul's School
@charlievoge



13
KAITLIN FINNEGAN
Gr.
F | 5-4
Tecumseh, Kan.
Kansas Connections Academy
(Lindenwood)
@kaitlin_finnegan



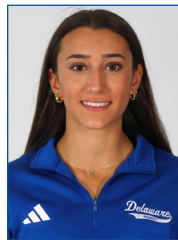
15
WREN ABBLOUD
Fr.
D | 5-2
Weymouth, Mass.
Thayer Academy
@wren.abboud



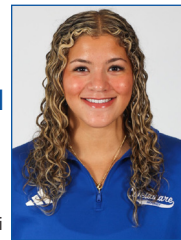
16
EVA MAYO
Fr.
F/D | 5-6
Honeoye Falls, N.Y.
Kent School
@eva_mayo06



17
SUVINA HEIDT
Fr.
D | 5-6
Aurora, Colo.
Winchendon School
@suvina_heidt77



18
FRANCESCA BARRESI
Fr.
F | 5-6
Ottawa, Ontario
St. Joseph Catholic
@francescaabarresi



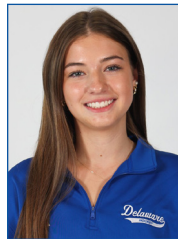
19
KATELYNN CHARLTON
Fr.
F | 5-7
Brampton, Ontario
St. Martins Catholic
@katelynn.charlton



20
MEERA SMITH
Fr.
F | 5-6
Victoria, B.C.
Shawnigan Lake School
@meerasmith_



21
BILLI ROMAN
Fr.
F | 5-3
Hockessin, Del.
The Tatnall School
@billi_21



24
TAYLOR SCHOOLEY
Fr.
D | 5-6
Moon Township, Pa.
Moon Area
@taylor.schools



27
IDA HAAVE
Fr.
F | 5-6
Kristiansand, Norway
Lillehammer
@idahaaave



31
CHARLOTTE PAYNE
Fr.
G | 5-8
Oakville, Ontario
Abbey Park
@charlottepayne031



ALLISON COOMEY

Head Coach
1st Season
Niagara '02



MELISSA SAMOSKEVICH

Assistant Coach
1st Season
Quinnipiac '19



TAYLOR WILLARD

Assistant Coach
1st Season
Vermont '18



MICHEL LAROCQUE

Vol. Goalie Coach
1st Season
Boston U. '99