



DELAWARE FIGHTIN' BLUE HENS

WOMEN'S LACROSSE GAME NOTES

a new era.



Brendan Thomas, Director, Communications & Creative Services | 207-400-2840 | brendant@udel.edu

SERIES HISTORY

| | |
|--------------------|---------------|
| All Time | 18-21 |
| Altig vs. | 2-3 |
| Streak | W1 |
| At Home | 9-6 |
| On the Road | 8-14 |
| Neutral | 1-1 |
| Largest Win | 16-9, 3/15/14 |
| Largest Loss | 19-4, 4/17/86 |
| Last Win | 12-10, 2/7/25 |
| Last Loss | 13-8, 2/21/24 |

HOW TO FOLLOW

Stream ESPN+
 Play-by-Play Luke Meli
 Analyst Renee Washington

X/Instagram @DelawareWLAX
 Live Stats bluehens.com

WHO ARE WE

Only refer to our institution as the **University of Delaware** or **UD**. Do not use "U of D," "UofD," "the U of D" or "UDel." Do not use periods in "UD." We are based in Newark (new-ARK), Delaware.

We are the Fightin' Blue Hens on first reference and Blue Hens, Hens, or Blue & Gold after that.

MEDIA RELATIONS

For interview requests for women's lacrosse student-athletes or coaches, please contact Brendan Thomas, Director, Communications & Creative Services.

Email brendant@udel.edu
 Cell 207-400-2840

DELAWARE (0-0)

GM
1

TEMPLE (0-0)



Head Coach: Amy Altig
Record at UD: 36-40 (7th season)
Career Record: same
Last: Lost, 20-11 vs. #23 Drexel



Head Coach: Bonnie Rosen
Record at TU: 161-156 (20th season)
Career Record: 229-237 (30th season)
Last: Won, 17-12 vs. Charlotte

friday, february 6 | 3 p.m. | philadelphia, pa. | howarth field (500) | espn+

OPENING DRAW

The University of Delaware women's lacrosse program begins a new era on Friday afternoon as it kicks off its first season as a member of the of the Atlantic Sun Conference (ASUN).

The Fightin' Blue Hens return 10 starters from the 2025 campaign, including three of their top-five scorers. **Jaclyn Marszal** ranked second on the team with 50 points (21g, 29a), while **Ella Rishko** had a team-leading 36 goals and 45 points, and **Morgan Gore** (30g, 2a) rounded out the top five.

Delaware's defense ranked eighth in the country with 11.19 caused turnovers per game. **Kat Baseggio** returns to lead UD's back line after recording 23 caused turnovers and grabbing 29 ground balls in 2025. **Maggie Farragher** (13 CT, 20 GB) and **Kennedy Radziul** (12 CT, 20 GB) also return to starting roles.

In goal, **Steph Marszal** started in 13 games last season, making 106 saves and recording an 11.65 goals against average. The senior currently sits at 199 career saves and is one away from becoming the 17th Blue Hen to reach the 200-career save mark.

The Blue Hens are 18-21 all-time against Temple, including a 10-7 victory over the Owls in the 1983 national championship game. The two teams have met in six of the past seven years, excluding the COVID-shortened 2020 season.

Last year, Delaware came away with a 12-10 win in the season opener at Delaware Stadium. **Delaney McDaniel** led the Hens with two goals and two assists, while **Maggie Craytor** registered a hat trick in her first-collegiate game and **Jaclyn Marszal** finished with a goal and two assists. **Morgan Gore** (2g), **Ella Rishko** (2g), and **Sam Paradise** (2a) all had multiple-point efforts, and **Steph Marszal** made six saves.

RETURNING LEADERS



ella rishko

goals
36 goals



jaclyn marszal

assists
29 assists



jaclyn marszal

points
45 points



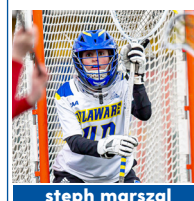
ella rishko

draws
55 draw controls



kat baseggio

ground balls
29 ground balls



steph marszal

saves
106 saves

2026 SCHEDULE

KEY H A N

* all times ET



feb. 6
Philadelphia, Pa.
3 p.m.
ESPN+



feb. 13
Newark, Del.
5 p.m.
ESPN+



feb. 18
Newark, Del.
3 p.m.
ESPN+



march 4
Newark, Del.
3 p.m.
ESPN+



march 7
Washington, D.C.
Noon
ESPN+



march 11
Philadelphia, Pa.
3 p.m.
FloSports



march 14
Newark, Del.
Noon
ESPN+



march 19
Clarksville, Tenn.
1 p.m.
ESPN+



march 21
St. Charles, Mo.
1 p.m.
ESPN+



march 26
Newark, Del.
Noon
ESPN+



march 28
Newark, Del.
Noon
ESPN+



april 1
Newark, Del.
4 p.m.
ESPN+



april 9
Newark, Del.
Noon
ESPN+



april 11
Newark, Del.
Noon
ESPN+



april 16
Charlotte, N.C.
Noon
ESPN+



april 22
Lynchburg, Va.
2 p.m.
ESPN+

A NEW ERA

After a nearly 18-month wait, the new era is finally here and the University of Delaware Fightin' Blue Hens are officially full members of Conference USA as of July 1, 2025. Fourteen of UD's 22 varsity programs are housed in CUSA, with seven others joining as affiliate members in the Atlantic Sun (women's lacrosse, men's and women's swimming & diving), Atlantic 10 (men's lacrosse), Mid-American Conference (rowing), The Summit League (men's soccer), and Atlantic Hockey America (ice hockey). Field hockey will be joining Mountain Pacific Sports Federation (MPSF) for the 2025 season, joining UC Davis as one of two founding members of the league's sponsorship

An athletic department built on history and tradition, Delaware brings an abundance of success to CUSA having won 10 national championships, 172 team conference titles, 282 individual conference crowns, 342 major conference awards, 2,655 all-league selections, and 543 all-americans.

UD student-athletes complement their athletic success with strong academic performances. During the 2024-25 academic year, the Blue Hens compiled a cumulative 3.41 grade-point average—the highest in department history, excluding academic terms impacted by COVID-19. This marked the 11th-consecutive year and the 23rd-straight semester in which UD student-athletes have posted a 3.00 GPA or better.

The move will push the Delaware brand across the nation, spanning from the northeast down into Florida, and west as far as New Mexico. However, the reach won't stop there. At least five football games will hit the national scene on CBS Sports Network/ESPN family of networks, including a non-conference tilt on FOX against Colorado. Men's and women's basketball will also have the chance to play nationally televised games as part of CUSA's media rights agreement with CBS Sports Network and ESPN.

Speaking of reach, Delaware's initial announcements about joining Conference USA reached over two billion people according to social media analytics. Put that into perspective - just over one million people live in the state of Delaware. That means these announcements reached over 2,000 Delawares.

With the announcement of Delaware football transitioning to FBS, the University was committed to adding a women's sport to continue to stay Title IX compliant. The University looked at a number of key criteria, including the feasibility, continued commitment to gender equity, recruiting footprint, conference fit, facilities, and ability to win championships.



CUSA SPONSORED DELAWARE SPORTS

- Baseball
- M/W Basketball
- W Cross Country/Track & Field
- Football
- M/W Golf
- W Soccer
- Softball
- M/W Tennis
- Volleyball

OTHER DELAWARE SPORTS AFFILIATIONS

- Field Hockey
- Ice Hockey
- M Lacrosse
- W Lacrosse
- MPSF
- Atlantic Hockey America
- Atlantic 10
- Atlantic Sun
- W Rowing
- M Soccer
- M/W Swim/Dive
- Mid-American
- The Summit League
- Atlantic Sun

QUICK FACTS

| | |
|----------------------------|------------------------|
| School..... | University of Delaware |
| Location..... | Newark, Del. |
| Founded..... | 1743 |
| Enrollment..... | 24,039 |
| President..... | Laura Carlson |
| School Website..... | www.udel.edu |
| Nickname..... | Fightin' Blue Hens |
| School Colors..... | Blue & Gold |
| Athletics Website..... | www.bluehens.com |
| Director of Athletics..... | Jordan Skolnick |
| Conference..... | Atlantic Sun |
| Website..... | www.asunsports.org |

WOMEN'S LACROSSE PROGRAM

| | |
|---------------------------------------|-------------------------------|
| Facility..... | Delaware Stadium |
| Capacity..... | 18,077 |
| First Season of Women's Lacrosse..... | 1978 |
| All-Time Record..... | 428-354-1 |
| All-Time Delaware Stadium Record..... | 64-53 |
| National Championships..... | 3 |
| Conference Championships..... | 6 |
| Head Coach..... | Amy Altig (James Madison '05) |
| Career Record..... | 36-40 / 7th season |
| Record at UD..... | same |
| Letterwinners Returning/Lost..... | 31/10 |
| Starters Returning/Lost..... | 10/2 |
| Newcomers..... | 8 |
| 2025 Overall Record..... | 10-6 |
| 2025 CAA Record..... | 6-2 |
| 2025 CAA Finish..... | 3rd |
| 2025 Postseason..... | CAA Semifinals |

TABLE OF CONTENTS

| | |
|--|-------|
| A New Era..... | 2 |
| Storylines..... | 3-6 |
| Program information..... | 3 |
| Statistical comparison..... | 3 |
| What to look for..... | 3 |
| Delaware record when..... | 4 |
| Statistical superlatives..... | 5 |
| ASUN standings/awards..... | 5 |
| Altig record vs. opponents..... | 6 |
| Milestone watch..... | 6 |
| Roster..... | 7 |
| Head coach Amy Altig..... | 8 |
| Assistant coaches & support staff..... | 9 |
| University of Delaware..... | 10 |
| Starters & stat leaders..... | 11 |
| Highs & lows..... | 12-13 |
| The last time..... | 14 |
| Season stats..... | 15 |
| NCAA Rankings..... | 16-17 |
| Player Pages..... | 18-27 |
| TV Roster..... | 28-29 |

WHAT TO LOOK FOR...

- A win would be Delaware's fourth-straight season-opening victory and move UD to 4-3 in season openers under head coach **Amy Altig**.
- Goalkeeper **Steph Marszal** needs one save to become the 17th Blue Hen to reach 200 career saves.
- Senior attacker **Jaclyn Marszal** needs one more point for 100 in her career, and three points to reach 100 points in her three seasons at Delaware.

owl homecoming

Delaware Associate Head Coach **Kara Nakrasius** is returning to her alma mater on Friday. She competed at Temple from 2016-21, where she was a four-year captain for the Owls. She broke the career draw control record with a total of 236 and ranked seventh in program history with 144 ground balls. A five-year starter at Temple, she played four years as a defender before transitioning to midfield/attack for her fifth year.

runnin' it back

The Blue Hens return 10 of their 12 starters from the 2025 season after the graduation of All-CAA Second Team selections Delaney McDaniel and Erin Gormley. Overall, Delaware has 13 returners who appeared in at least 12 games last spring.

keep the winning coming

Delaware is looking to build off of back-to-back 10-win seasons. It is the first time the program has had consecutive winning seasons since 2016-17 and the first time it has won at least 10 games in consecutive years since 2015-16.

returning production

The Blue & Gold returns 31 players who were on the roster a season ago, including 21 who saw action in at least one game. Included in the returners are three of UD's top-five scorers in **Jaclyn Marszal** (21g, 29a), while **Ella Rishko** (36g, 9a), and **Morgan Gore** (30g, 2a). On defense, Delaware brings back starters **Kat Baseggio** (23 CT, 29 GB), **Maggie Farragher** (13 CT, 20 GB), and **Kennedy Radziul** (12 CT, 20 GB). Overall, the Blue Hens bring back 67% of its goal-scoring production from last season and 69% of its caused turnover production from 2025.

newcomers

The Blue Hens welcome eight newcomers to the roster in 2026. The group includes seven freshmen - **Amanda Gazelle**, **Jenny Green**, **Erin Hussey**, **Marin Mooney**, **Marina Mersch**, **Maggie Porter** and **Sadie Schultz** - who will all look to make their collegiate debuts in 2026. Porter transferred to Delaware after spending the fall at Penn State. Additionally, sophomore transfer **Meg MacMurray** joined the Hens after a year at Maryland.

roster breakdown

The 2026 Delaware roster features 39 players hailing from nine different states. Sisters **Ella** and **Lulu Rishko** are the only two Delawareans on the roster, while senior captain **Maggie Farragher** (Illinois) is the farthest from home. Maryland (12), Pennsylvania (8) and New York (7) are the three most represented states.

oh captain, my captains

Delaware will be led by a trio of senior captains in 2026 as **Maggie Farragher**, **Morgan Gore**, and **Ella Rishko** were all selected to lead the squad. Farragher and Gore are both second-time selections after serving as captains in 2025, while Rishko is a first-time captain in her second season as a Blue Hen following her transfer from Virginia Tech.

asun a good fit

While 2026 will be the Blue Hens' first season in the ASUN, their 2025 numbers suggest the program will fit right in. Delaware finished 34th in the final 2025 RPI rankings, which would have been at the top of the conference, with Liberty second at 39th. Statistically, Delaware would have ranked first in the conference in free position percentage (.545), second in scoring defense (11.63), and third in caused turnovers per game (11.19), assists per game (6.25) and turnovers per game (14.63).

STATISTICAL COMPARISON (2025)

| Category | DEL | NCAA | CAA | TU | NCAA | AAC |
|--------------------------|-------|------|-----|-------|-------|-----|
| Assists Per Game | 6.25 | 38th | 2nd | 4.94 | 77th | 6th |
| Caused TO Per Game | 11.19 | 8th | 1st | 8.44 | 50th | 3rd |
| Clearing Percentage | .865 | 76th | 9th | .834 | 104th | 7th |
| Draw Control Percentage | .469 | 81st | 5th | .440 | 104th | 6th |
| Draw Controls Per Game | 13.13 | 71st | 5th | 11.75 | 102nd | 7th |
| Free Position Percentage | .545 | 6th | 1st | .359 | 117th | 7th |
| Ground Balls Per Game | 17.19 | 39th | 4th | 16.94 | 46th | 3rd |
| Saves Percentage | .402 | 83rd | 6th | .450 | 35th | 3rd |
| Scoring Defense | 11.63 | 60th | 4th | 13.75 | 98th | 6th |
| Scoring Margin | 1.44 | 44th | 3rd | -4.00 | -- | -- |
| Scoring Offense | 13.06 | 41st | 3rd | 9.75 | 100th | 7th |
| Shot Percentage | .456 | 20th | 3rd | .399 | 92nd | 7th |
| Shots Per Game | 28.63 | 61st | 4th | 24.44 | 105th | 7th |
| Shots On Goal Per Game | 22.44 | 36th | 3rd | 17.06 | 114th | 7th |
| Turnovers Per Game | 14.63 | 50th | 4th | 19.31 | 123rd | 7th |

get the lead, hold the lead

The Blue Hens have been very good in recent years in holding a second-half lead. In 2025, the squad went 10-1 when leading at halftime and 9-0 when having the advantage after three quarters. Similarly, Delaware was 8-0 in 2024 when up at the midway point and 10-0 when leading after three quarters.

it starts at the draw

The Blue Hens went 7-0 in 2025 when winning more draws than their opponents. **Ella Rishko** set the program single-game record with 15 draw controls at Towson (April 13).

magic number is 10

Since **Amy Altig** became head coach prior to the 2020 season, the Blue Hens are 22-2 when holding opponents under 10 goals. On the flipside, Delaware is 34-16 when the offense scores 10 or more goals.

caa postseason honors

Delaware returns three of its five All-CAA selections from a season ago. Senior **Morgan Gore** was an All-CAA Second Team pick in 2025, earning her second-career postseason nod, and sophomores **Lulu Rishko** and **Kennedy Radziul** were both selected to the CAA All-Rookie Team.

there's something in the gene pool

The Blue Hens had two pairs of sisters on the team who are both two-thirds of a set of triplets. Seniors **Jaclyn** and **Steph Marszal** have a third sister, Jamie, who is a senior at Loyola Maryland. Sophomores **Lena** and **Stella Stolarick** also have a third sister who is on the Holy Cross track & field team.

The genetic trait of twins runs strong on the Blue Hens' roster. Seniors **McKenzie** and **Mia Didio** have spent their entire careers at UD, while junior **Molly Baumgratz** has a twin sister - Ellie - who attends the University of Tennessee. Freshman **Marina Mersch** has a twin sister - Chiara - who is also a freshman at Delaware.

While not twins, **Ella** and **Lulu Rishko** make up a fourth set of sisters on the 2026 roster. Additionally, junior **Mary Matey** has an older sister, **Kellie Ann**, who played defense for the Blue Hens from 2021-24. The two overlapped on the roster during the 2024 season.

puerto rico

Senior twins **McKenzie** and **Mia Didio** both represented Puerto Rico at the 2024 World Lacrosse Women's U20 Championship in Hong Kong, China. Their maternal grandmother is a native of Puerto Rico and the two earned spots on the Puerto Rico U20 National Team through a tryout.

Puerto Rico finished fifth overall with a 6-2 record, going 3-1 in pool play and winning two consolation playoff games. McKenzie finished sixth on the team in scoring with eight goals and two assists. Mia, unfortunately, missed the tournament due to injury.

altig here for the long haul

In July, Delaware and head coach **Amy Altig** agreed upon a contract extension that will keep her at the helm of the women's lacrosse program through the 2030 season. Altig was named the seventh head coach in program history in June 2019 and has led Delaware to a 36-40 record through her first six seasons, including back-to-back 10-win campaigns in 2023-24. UD won six CAA games in 2025, the program's most league wins since 1999 when the Blue Hens went 6-0 in America East play.

nakrasius promoted

Back in June, head coach **Amy Altig** announced the promotion of **Kara Nakrasius** to associate head coach. Nakrasius joined the UD program in August 2022 and has spent the past three seasons overseeing UD's efforts on defense and at the draw. In 2025, the Blue Hens ranked eighth nationally in caused turnovers per game (11.19) after ranking ninth in 2024 (10.44). Delaware has set eight program records on defense and at the draw in three seasons under Nakrasius.

Nakrasius Records

- Team single-game CT (26)
- Team single-game GB (33)
- Team single-game DC (26)
- Team single-season DC (240)
- Individual single-game CT (Hranicka, 11)
- Individual single-season CT (Hranicka, 50)
- Individual single-game DC (Rishko, 15)
- Individual career DC (Livornese, 223)

DELAWARE RECORD WHEN...

| | 2026 | ALTIG |
|-------------------------------|------|-------|
| Overall | 0-0 | 36-40 |
| Conference | 0-0 | 16-14 |
| Non-conference | 0-0 | 20-26 |
| Home | 0-0 | 20-18 |
| Away | 0-0 | 16-18 |
| Neutral | 0-0 | 0-4 |
| Current streak | -- | L1 |
| Current home streak | -- | W2 |
| Current road streak | -- | W6 |
| Current neutral streak | -- | L5 |
| vs. ranked opponent | 0-0 | 1-12 |
| Day game | 0-0 | 34-38 |
| Night game (5 p.m. or later) | 0-0 | 2-2 |
| February | 0-0 | 11-11 |
| March | 0-0 | 14-18 |
| April | 0-0 | 11-8 |
| May | 0-0 | 0-3 |
| Scoring first | 0-0 | 21-17 |
| Opponent scores first | 0-0 | 15-23 |
| Scoring 0-4 goals | 0-0 | 0-6 |
| Scoring 5-9 goals | 0-0 | 2-18 |
| Scoring 10-14 goals | 0-0 | 19-15 |
| Scoring 15-19 goals | 0-0 | 14-1 |
| Scoring 20+ goals | 0-0 | 1-0 |
| Allowing 0-4 goals | 0-0 | 4-0 |
| Allowing 5-9 goals | 0-0 | 18-2 |
| Allowing 10-14 goals | 0-0 | 13-19 |
| Allowing 15-19 goals | 0-0 | 1-16 |
| Allowing 20+ goals | 0-0 | 0-3 |
| Leading after 1st | 0-0 | 19-6 |
| Trailing after 1st | 0-0 | 8-21 |
| Tied after 1st | 0-0 | 7-5 |
| Leading at halftime | 0-0 | 26-4 |
| Trailing at halftime | 0-0 | 7-32 |
| Tied at halftime | 0-0 | 3-4 |
| Leading after 3rd | 0-0 | 27-5 |
| Trailing after 3rd | 0-0 | 3-26 |
| Tied after 3rd | 0-0 | 4-1 |
| Overtime | 0-0 | 1-3 |
| Delaware has more GBs | 0-0 | 24-12 |
| Opponent has more GBs | 0-0 | 10-26 |
| GBs are even | 0-0 | 2-2 |
| Delaware wins more draws | 0-0 | 26-8 |
| Opponent wins more draws | 0-0 | 10-29 |
| Draws are even | 0-0 | 0-3 |
| Delaware clear attempts ≥ 85% | 0-0 | 25-21 |
| Delaware clear attempts < 85% | 0-0 | 11-19 |
| Opponent clear attempts ≥ 85% | 0-0 | 17-30 |
| Opponent clear attempts < 85% | 0-0 | 19-10 |

ON THIS DATE IN DELAWARE WLAX HISTORY...

FEB

6

Delaware has never played a game on February 6.

This will be earliest game the program has ever played, besting the 2025 season opener, which was held on February 7 when the Blue Hens defeated Temple 12-10 in Newark.

ACTIVE POINTS LEADERS

| Name | Yr. | G | A | P |
|--------------------|-----|----|----|-----|
| Ella Rishko | Sr. | 97 | 23 | 120 |
| Jaclyn Marszal | Sr. | 48 | 51 | 99 |
| Morgan Gore | Sr. | 62 | 7 | 69 |
| Callie Drab | Sr. | 27 | 20 | 47 |
| Sam Paradise | Jr. | 20 | 2 | 22 |
| Riley Sturtevant | Sr. | 15 | 2 | 17 |
| McKenzie Didio | Sr. | 15 | 0 | 15 |
| Lulu Rishko | So. | 7 | 4 | 11 |
| Maggie Craytor | So. | 5 | 0 | 5 |
| Sophia Muscolino | So. | 4 | 1 | 5 |
| Alison Swartout | Sr. | 1 | 0 | 1 |
| Julia Ciufo | Jr. | 1 | 0 | 1 |
| Kat Baseggio | Jr. | 0 | 0 | 0 |
| Molly Baumgratz | Jr. | 0 | 0 | 0 |
| Grayson Buono | So. | 0 | 0 | 0 |
| Ellie Dassoulas | Sr. | 0 | 0 | 0 |
| Nichelle Desbordes | So. | 0 | 0 | 0 |
| Mia Didio | Sr. | 0 | 0 | 0 |
| Maggie Farragher | Sr. | 0 | 0 | 0 |
| Amanda Gazelle | Fr. | 0 | 0 | 0 |
| Jenny Green | Fr. | 0 | 0 | 0 |
| Lara Hoeflich | So. | 0 | 0 | 0 |
| Erin Hussey | Fr. | 0 | 0 | 0 |
| Meg MacMurray | So. | 0 | 0 | 0 |
| Mary Matey | Jr. | 0 | 0 | 0 |
| Kate Mercer | Sr. | 0 | 0 | 0 |
| Maddy Mobilia | Jr. | 0 | 0 | 0 |
| Marin Mooney | Fr. | 0 | 0 | 0 |
| Kylie O'Brien | So. | 0 | 0 | 0 |
| Sydney O'Donnell | So. | 0 | 0 | 0 |
| Maggie Porter | Fr. | 0 | 0 | 0 |
| Kennedy Radziul | So. | 0 | 0 | 0 |
| Julia Reagan | Sr. | 0 | 0 | 0 |
| Sadie Schultz | Fr. | 0 | 0 | 0 |
| Lena Stolarick | So. | 0 | 0 | 0 |
| Stella Stolarick | So. | 0 | 0 | 0 |

HAT TRICKS

| Name | 2026 | Career |
|----------------|------|--------|
| Ella Rishko | 0 | 15 |
| Jaclyn Marszal | 0 | 6 |
| Morgan Gore | 0 | 6 |
| Callie Drab | 0 | 2 |
| Sam Paradise | 0 | 2 |
| Maggie Craytor | 0 | 1 |

always fightin'

Senior **Jaclyn Marszal** transferred to Delaware after playing her freshman season at the University of Notre Dame, going from the Fighting Irish to the Fightin' Blue Hens. Marszal is UD's top returning scorer from a season ago when she had 21 goals and 29 assists for 50 points. Entering her third season with the Blue & Gold, Marszal has 97 points (46g, 51a) in 32 games for Delaware after scoring two goals in five games at Notre Dame.

no place like home

Senior **Ella Rishko** played her first two collegiate seasons at Virginia Tech before transferring home to the First State to play her final two years as a Blue Hen alongside her sister **Lulu**. The Rehoboth Beach, Delaware native led UD with 36 goals and 55 draw controls in 2025, finishing with 45 total points. In two seasons at Virginia Tech, Rishko had 61 goals and 75 points over 32 games.

impressive in the classroom

In addition to their success on the field, the Hens have been showcasing their hard work in the classroom as well. As a team, the Blue Hens had a 3.52 GPA during the 2025 fall semester and five student-athletes - **McKenzie Didio, Mia Didio, Amanda Gazelle, Morgan Gore** and **Jaclyn Marszal** - posted perfect 4.0 semesters.

new opponents on schedule

With Delaware beginning a New Era in the ASUN this season, the Blue Hens will be facing a number of first-time opponents. Eight of the team's 16 games will be against programs UD has never played, including seven of Delaware's eight ASUN matchups. The new opponents consist of Navy (Feb. 18), Austin Peay (March 19), Lindenwood (March 21), Jacksonville (March 26), Stetson (March 28), Kennesaw State (Apr. 9), Queens (Apr. 16) and Liberty (Apr. 22).

matey family affair

Junior defender **Mary Matey** is continuing a couple of family legacies as she is the fourth sister in her family to play Division I college lacrosse. She overlapped in Newark with her sister **Kellie Ann** who was also a defender for the Blue Hens from 2021-24). She also had a sister, Rachel, who played defense at James Madison (2019-23) and her oldest sister, Meghan, was a midfielder at Ohio State (2017-20).

Since 2021, Matey and her sisters have all worn #22 on the lacrosse field to honor their late father, Dave, who tragically passed away after a battle with cancer. He wore #22 as a college football linebacker at Ursinus.

ASUN STANDINGS

| Team | ASUN | OVR | STRK |
|------------------|------------|------------|------|
| Delaware | 0-0 | 0-0 | -- |
| Austin Peay | 0-0 | 0-0 | -- |
| Coastal Carolina | 0-0 | 0-0 | -- |
| Jacksonville | 0-0 | 0-0 | -- |
| Kennesaw State | 0-0 | 0-0 | -- |
| Liberty | 0-0 | 0-0 | -- |
| Lindenwood | 0-0 | 0-0 | -- |
| Queens | 0-0 | 0-0 | -- |
| Stetson | 0-0 | 0-0 | -- |

2026 AWARDS LIST

ASUN Offensive Player of the Week

ASUN Defensive Player of the Week

GOAL/POINT STREAKS

| Name | Consecutive Games | |
|------------------|-------------------|--------|
| | w/Point | w/Goal |
| Jaclyn Marszal | 8 | 5 |
| Riley Sturtevant | 8 | 4 |
| Morgan Gore | 6 | 6 |
| Lulu Rishko | 1 | 1 |

SCORING SUPERLATIVES

| Career Games w/ | Multi | Multi | 5+ |
|------------------|-------|-------|-------|
| Name | Point | Goal | Point |
| Ella Rishko | 30 | 24 | 9 |
| Jaclyn Marszal | 26 | 11 | 7 |
| Morgan Gore | 18 | 16 | 1 |
| Callie Drab | 13 | 6 | 1 |
| Sam Paradise | 6 | 5 | 0 |
| Riley Sturtevant | 4 | 4 | 0 |
| McKenzie Didio | 3 | 3 | 0 |
| Lulu Rishko | 3 | 2 | 0 |
| Maggie Craytor | 1 | 1 | 0 |
| Sophia Muscolino | 1 | 0 | 0 |

ALTIG VS.

| OPPONENT | H | A | N | OVR |
|-------------------------|--------------|--------------|------------|--------------|
| Army | 0-1 | 0-0 | 0-0 | 0-1 |
| Austin Peay * | 0-0 | 0-0 | 0-0 | 0-0 |
| Campbell | 1-0 | 1-0 | 0-0 | 2-0 |
| Coastal Carolina | 0-1 | 0-0 | 0-0 | 0-1 |
| Delaware State | 1-0 | 0-0 | 0-0 | 1-0 |
| Denver | 0-0 | 0-1 | 0-0 | 0-1 |
| Drexel | 0-2 | 0-2 | 0-1 | 0-5 |
| Duquesne | 1-0 | 0-0 | 0-0 | 1-0 |
| Elon | 2-0 | 2-1 | 0-0 | 4-1 |
| George Mason | 0-0 | 0-1 | 0-0 | 0-1 |
| Georgetown | 0-3 | 1-2 | 0-0 | 1-5 |
| Hofstra | 0-2 | 2-0 | 0-0 | 2-2 |
| Jacksonville * | 0-0 | 0-0 | 0-0 | 0-0 |
| James Madison | 0-0 | 0-1 | 0-0 | 0-1 |
| Kennesaw State * | 0-0 | 0-0 | 0-0 | 0-0 |
| Kent State | 1-0 | 0-0 | 0-0 | 1-0 |
| La Salle | 1-0 | 0-1 | 0-0 | 1-1 |
| Lafayette | 2-0 | 0-0 | 0-0 | 2-0 |
| Lehigh | 1-0 | 1-0 | 0-0 | 2-0 |
| Liberty * | 0-0 | 0-0 | 0-0 | 0-0 |
| Lindenwood * | 0-0 | 0-0 | 0-0 | 0-0 |
| Maryland | 0-0 | 0-1 | 0-0 | 0-1 |
| Monmouth | 2-0 | 1-0 | 0-0 | 3-0 |
| Mount St. Mary's | 1-0 | 1-0 | 0-0 | 2-0 |
| Navy * | 0-0 | 0-0 | 0-0 | 0-0 |
| Niagara | 0-0 | 0-0 | 0-1 | 0-1 |
| Old Dominion | 1-0 | 1-0 | 0-0 | 2-0 |
| Penn | 0-0 | 0-1 | 0-0 | 0-1 |
| Princeton | 0-1 | 0-0 | 0-0 | 0-1 |
| Queens * | 0-0 | 0-0 | 0-0 | 0-0 |
| Rutgers | 0-1 | 0-2 | 0-0 | 0-3 |
| Saint Joseph's | 0-1 | 0-1 | 0-0 | 0-2 |
| Stetson * | 0-0 | 0-0 | 0-0 | 0-0 |
| Stony Brook | 0-1 | 0-2 | 0-1 | 0-4 |
| Temple | 1-2 | 1-1 | 0-0 | 2-3 |
| Towson | 1-2 | 1-0 | 0-1 | 2-3 |
| UMBC | 1-1 | 2-0 | 0-0 | 3-1 |
| Wagner | 1-0 | 1-0 | 0-0 | 2-0 |
| William & Mary | 2-0 | 0-2 | 0-0 | 2-2 |
| TOTALS | 20-18 | 16-18 | 0-4 | 36-40 |

Bold indicates 2026 opponent
 * Indicates first meeting in 2026

glenelg pipeline

The Blue Hens have done well recruiting in Maryland, with 12 Marylanders on the 2026 roster. Particularly, there are four Hens on the roster who hail from Howard County and attended high school in Glenelg. Senior twins **Jaclyn** and **Steph Marszal** (Catonsville) as well as sophomore **Nichelle Desbordes** (Ellicott City) all come from Glenelg Country School, while sophomore **Lara Hoeflich** (Glenelg) went to Glenelg High School.

head hen

Jordan Skolnick was named the University of Delaware's Director of Athletics & Campus Recreation. Skolnick joined UD Athletics in 2016 and served as interim director of athletics & campus recreation since March 2025. He is the eighth person in the department's history to hold the permanent role. Skolnick will be responsible for leading the Fightin' Blue Hens' 22 varsity teams, spirit program, and robust campus recreation unit. A native of Storrs, Conn., Skolnick successfully guided the department through its transitions to Conference USA and the Football Bowl Subdivision (FBS), while prioritizing a renewed focus on campus collaboration to increase partnerships and ensure the University's ability to capitalize on increased national exposure.

for the 302

Delaware is one of 11 states that are represented by one area code. Delaware is the 302, while the other states are: Alaska, Hawaii, Maine, Montana, New Hampshire, North Dakota, Rhode Island, South Dakota, Vermont, and Wyoming.

birds of a feather

With over 1,100 schools across three divisions in the NCAA, the Blue Hens are one of two institutions with the nickname in the hen family. Pomona- Pitzer, a Division III institution, is nicknamed the Sagehens. Both South Carolina and Jacksonville State have the nickname Gamecocks and Coastal Carolina is the Chanticleers, which both fall in the rooster family.

best bird in the land

YoUDee is one of 11 NCAA inductees in the Mascot Hall of Fame and the only one in the ASUN. The beloved Fightin' Blue Hens' mascot turned 32 on September 4, 2025.

MILESTONE WATCH

| | |
|-----------------------------------|-----|
| 150-Career Points | |
| Ella Rishko | 120 |
| 100-Career Points | |
| Jaclyn Marszal | 99 |
| Morgan Gore | 69 |
| 100-Delaware Points | |
| Jaclyn Marszal | 97 |
| 50-Career Ground Balls | |
| Ella Rishko | 48 |
| Kat Baseggio | 43 |
| Morgan Gore | 39 |
| Jaclyn Marszal | 33 |
| Maggie Farragher | 32 |
| 100-Career Draw Controls | |
| Ella Rishko | 93 |
| 50-Career Draw Controls | |
| Morgan Gore | 37 |
| 50-Career Caused Turnovers | |
| Kat Baseggio | 36 |
| 200-Career Saves | |
| Steph Marszal | 199 |

GAMES/STARTS STREAKS

| | Consecutive | |
|------------------|-------------|----|
| | GP | GS |
| Morgan Gore * | 48 | 11 |
| Kat Baseggio * | 32 | 27 |
| Maddy Mobilia * | 32 | 27 |
| Callie Drab | 32 | 0 |
| Jaclyn Marszal * | 32 | 0 |
| Riley Sturtevant | 17 | 7 |
| Ella Rishko * | 16 | 16 |
| Lulu Rishko | 14 | 0 |
| Grayson Buono | 10 | 0 |
| Steph Marszal | 9 | 9 |
| Molly Baumgratz | 8 | 5 |
| Kennedy Radziul | 8 | 0 |
| Maggie Farragher | 3 | 3 |
| Lena Stolarick | 1 | 1 |
| Kate Mercer | 1 | 0 |
| Mary Matey | 1 | 0 |

* indicates has played every game of UD career

2026 DELAWARE NUMERICAL ROSTER

| # | NAME | POS. | YR. | HT. | HOMETOWN/HIGH SCHOOL (PREV. SCHOOL) |
|----|--------------------|------|-------|-----|---|
| 1 | Stella Stolarick | A | So. | 5-5 | Haddonfield, N.J. / Haddonfield Memorial |
| 2 | Grayson Buono | A | So. | 5-7 | Wayne, Pa. / Radnor |
| 3 | Lara Hoeflich | D | So. | 5-7 | Glenelg, Md. / Glenelg High |
| 4 | Marin Mooney | A | Fr. | 5-8 | Villanova, Pa. / Radnor |
| 6 | Jenny Green | D | Fr. | 5-5 | Garnet Valley, Pa. / Garnet Valley |
| 7 | Julia Ciufu | M | Jr. | 5-3 | Reisterstown, Md. / Roland Park Country |
| 8 | Jaclyn Marszal | A | Sr. | 5-8 | Catonsville, Md. / Glenelg Country School (Notre Dame) |
| 9 | Kat Baseggio | D | Jr. | 5-9 | Guilford, Conn. / Guilford |
| 10 | McKenzie Didio | A | Sr. | 5-6 | Westport, Conn. / Staples |
| 11 | Julia Reagan | M | Sr. | 5-3 | East Atlantic Beach, N.Y. / Sacred Heart Academy |
| 12 | Erin Hussey | M | Fr. | 5-7 | Severna Park, Md. / Severna Park |
| 13 | Maggie Craytor | A | So. | 6-0 | Charlottesville, Va. / Western Albemarle |
| 14 | Sophia Muscolino | A | Jr. | 5-4 | Baldwinsville, N.Y. / Charles W. Baker |
| 15 | Meg MacMurray | A | So. | 5-8 | Chester Springs, Pa. / The Hill School (Maryland) |
| 16 | Callie Drab | A | Sr. | 5-7 | Suffern, N.Y. / Suffern |
| 17 | Morgan Gore | M | Sr. | 5-6 | Crofton, Md. / Arundel |
| 18 | Lena Stolarick | D | So. | 5-4 | Haddonfield, N.J. / Haddonfield Memorial |
| 19 | Maggie Porter | A | Fr. | 5-5 | Stevenson, Md. / St. Paul's School for Girls (Penn State) |
| 20 | Sam Paradise | M | Jr. | 5-8 | Perry Hall, Md. / Maryvale Preparatory |
| 21 | Kate Mercer | D | Sr. | 5-8 | Katonah, N.Y. / John Jay |
| 22 | Mary Matey | D | Jr. | 5-6 | Phoenixville, Pa. / Archbishop Carroll |
| 23 | Lulu Rishko | M | So. | 5-5 | Rehoboth Beach, Del. / Cape Henlopen |
| 24 | Kylie O'Brien | D | So. | 5-6 | Berwyn, Pa. / Academy of Notre Dame de Namur |
| 25 | Amanda Gazelle | M | Fr. | 5-3 | Odenton, Md. / Archbishop Spalding |
| 26 | Alison Swartout | M | Sr. | 5-4 | Charlottesville, Va. / Monticello |
| 27 | Maddy Mobilia | D | Jr. | 5-1 | New Rochelle, N.Y. / The Ursuline School |
| 28 | Maggie Farragher | D | Sr. | 5-7 | Evanston, Ill. / Evanston Township |
| 29 | Kennedy Radziul | D | So. | 5-9 | Northport, N.Y. / Northport |
| 30 | Marina Mersch | GK | Fr. | 5-3 | Media, Pa. / Cardinal O'Hara |
| 31 | Maddie George | GK | So. | 5-9 | Centreville, Md. / Queen Anne's County |
| 32 | Ella Rishko | A | Sr. | 5-5 | Rehoboth Beach, Del. / Cape Henlopen (Virginia Tech) |
| 33 | Sydney O'Donnell | M | So. | 5-8 | Downingtown, Pa. / Downingtown West |
| 34 | Riley Sturtevant | M | Sr. | 5-7 | Springfield, Va. / West Springfield |
| 35 | Nichelle Desbordes | M | So. | 5-3 | Ellicott City, Md. / Glenelg Country School |
| 37 | Mia Didio | M | Sr. | 5-5 | Westport, Conn. / Staples |
| 38 | Sadie Schultz | M | Fr. | 5-6 | Riverhead, N.Y. / Riverhead |
| 40 | Steph Marszal | GK | R-Sr. | 5-4 | Catonsville, Md. / Glenelg Country School |
| 41 | Molly Baumgratz | M | Jr. | 5-8 | Charlotte, N.C. / Charlotte Catholic |
| 42 | Ellie Dassoulas | A | Sr. | 5-8 | Towson, Md. / Roland Park Country School |

GEOGRAPHICAL

Connecticut (3)

- 9 Kat Baseggio
- 10 McKenzie Didio
- 37 Mia Didio

Delaware (2)

- 32 Ella Rishko
- 23 Lulu Rishko

Illinois (1)

- 28 Maggie Farragher

Maryland (12)

- 3 Lara Hoeflich
- 7 Julia Ciufu
- 8 Jaclyn Marszal
- 12 Erin Hussey
- 17 Morgan Gore
- 19 Maggie Porter
- 20 Sam Paradise
- 25 Amanda Gazelle
- 31 Maddie George
- 35 Nichelle Desbordes
- 40 Steph Marszal
- 42 Ellie Dassoulas

North Carolina (1)

- 41 Molly Baumgratz

New Jersey (2)

- 18 Lena Stolarick
- 1 Stella Stolarick

New York (7)

- 11 Julia Reagan
- 14 Sophia Muscolino
- 16 Callie Drab
- 21 Kate Mercer
- 27 Maddy Mobilia
- 29 Kennedy Radziul
- 38 Sadie Schultz

Pennsylvania (8)

- 2 Grayson Buono
- 4 Marin Mooney
- 6 Jenny Green
- 15 Meg MacMurray
- 22 Mary Matey
- 24 Kylie O'Brien
- 30 Marina Mersch
- 33 Sydney O'Donnell

Virginia (3)

- 13 Maggie Craytor
- 26 Alison Swartout
- 34 Riley Sturtevant

PRO-NUN-SEE-AY-SHUNS

| | | | |
|---------------------|-----------------------|-----------------------|---------------|
| 1 Stella Stolarick | STOLL-are-ick | 27 Maddy Mobilia | Moe-BEAL-yuh |
| 2 Grayson Buono | BYOU-no | 28 Maggie Farragher | FAIR-uh-grr |
| 3 Lara Hoeflich | LAH-ruh HOE-flick | 29 Kennedy Radziul | RAD-zool |
| 4 Marin Mooney | MARE-in | 30 Marina Mersch | MERSH |
| 7 Julia Ciufu | CHEW-foe | 34 Riley Sturtevant | STIR-duh-vont |
| 8 Jaclyn Marszal | MARZ-elle | 35 Nichelle Desbordes | des-BORE-des |
| 9 Kat Baseggio | Buh-SEE-GEE-oh | 37 Mia Didio | DID-ee-oh |
| 10 McKenzie Didio | DID-ee-oh | 40 Steph Marszal | MARZ-elle |
| 14 Sophia Muscolino | Mus-KUH-lee-no | 41 Molly Baumgratz | BUM-gratz |
| 18 Lena Stolarick | LEE-nuh STOLL-are-ick | 42 Ellie Dassoulas | da-SOOL-is |
| 22 Mary Matey | MAY-tee | AC Kara Nakrasius | Nah-KRAY-shus |
| 26 Alison Swartout | SWORE-tout | AC Lilly Siskind | sis-KIND |

ROSTER BY CLASS

SENIORS (13)

- Ellie Dassoulas
- McKenzie Didio
- Mia Didio
- Callie Drab
- Maggie Farragher
- Morgan Gore
- Jaclyn Marszal
- Steph Marszal
- Kate Mercer
- Julia Reagan
- Ella Rishko
- Riley Sturtevant
- Alison Swartout

JUNIORS (7)

- Kat Baseggio
- Molly Baumgratz
- Julia Ciufu
- Mary Matey
- Maddy Mobilia
- Sophia Muscolino
- Sam Paradise

SOPHOMORES (12)

- Grayson Buono
- Maggie Craytor
- Nichelle Desbordes
- Maddie George
- Lara Hoeflich
- Meg MacMurray
- Kylie O'Brien
- Sydney O'Donnell
- Kennedy Radziul
- Lulu Rishko
- Lena Stolarick
- Stella Stolarick

FRESHMEN (7)

- Amanda Gazelle
- Jenny Green
- Erin Hussey
- Marina Mersch
- Marin Mooney
- Maggie Porter
- Sadie Schultz

HEAR OUR NAMES





THE ALTIG FILE

Hometown: Millersville, Md.
Alma Mater: James Madison '05
Degree: Kinesiology
Years in Coaching: 21st in 2026

NOTABLE HIGHLIGHTS

Coach

2015 IWLCA Assistant Coach of the Year
 U.S. Lacrosse Virginia Chapter Hall of Fame
 USA National Team Defensive Coordinator

Player

2x All-CAA selection
 2x CAA Champion
 2009 USA World Cup Training Team
 2008 USA Prague Touring Team
 2003 USA National Team

AS DELAWARE HEAD COACH

| | |
|-------------------------|-------------|
| Year | 7th in 2026 |
| Overall Record | 36-40 |
| Home | 20-18 |
| Away | 16-18 |
| Neutral | 0-4 |
| vs. Ranked Teams | 1-12 |
| In ASUN Games | 0-0 |
| Postseason | 0-3 |

ALTIG YEAR-BY-YEAR

| YEAR | W-L | PCT. | CONF |
|--------------|--------------|-------------|--------------|
| 2020 | 2-3 | .400 | 1-0 |
| 2021 | 1-5 | .167 | 0-0 |
| 2022 | 5-12 | .294 | 2-4 |
| 2023 | 8-8 | .500 | 4-3 |
| 2024 | 10-6 | .625 | 3-5 |
| 2025 | 10-6 | .625 | 6-2 |
| 2026 | 0-0 | --- | 0-0 |
| TOTAL | 36-40 | .474 | 16-14 |

First career win: 17-8 vs. Duquesne (3/4/20)

HEAD COACH AMY ALTIG

Amy Altig enters her seventh season at the helm of the Fightin' Blue Hens in 2026. She was named the seventh coach of University of Delaware women's lacrosse program on June 3, 2019.

Altig has led the Blue Hens to immense success on the field, qualifying for the CAA Championship in three of four years since 2022. The program recorded back-to-back 10-win seasons in 2024-25, achieving the mark for the first time 2016, and UD's 7-1 record to begin the 2024 season was the best start since the 2016 season. Delaware won six CAA games in 2025, the most since joining the conference and the program's most league wins since 1999.

On March 11, 2022, the Blue Hens defeated No. 18 Temple on the road for their first win over a nationally-ranked opponent since 2017.

Delaware's student-athletes have taken home plenty of hardware since Altig arrived in Newark. Delaney McDaniel earned CAA Rookie of the Year honors in 2018, UD's first conference major award winner since 2016. Madison Hranicka was named the CAA Defensive Player of the Year in consecutive seasons (2023-24). The Blue Hens have earned 14 all-conference honors, led by three-straight All-CAA First Team selections by Hranicka (2022-24) and three by McDaniel. On the national level, Hranicka earned All-America honors in 2024 and all-region recognition in both 2023 and 2024. Erin Gormley was an all-region selection in 2025.

The Blue & Gold have had several statistical achievements with Altig at the helm. In 2025, the Blue Hens led the CAA and ranked sixth nationally in free position percentage (.545) while also ranking eighth in the country in caused turnovers per game (11.19). Against Lafayette in 2024, the Blue Hens set a program record for caused turnovers (26) and tied the record for ground balls (33). Goalkeeper Steph Marzsai finish ninth in the country in save percentage (.489) in 2024. Hranicka set the single-season program record in 2023 with 50 caused turnovers.

Altig arrived to Newark following nine seasons at Penn State University, where she was an assistant coach for six years and an associate head coach for the final three. She helped lead the Nittany Lions to 111 wins with seven NCAA Tournament appearances and two trips to the NCAA Tournament Final Four. During her tenure, she coached 19 All-Americans, 36 all-region performers, 40 all-conference selections in addition to more than 25 student-athletes who received academic honors. Additionally, PSU boasted three Conference Goalkeepers of the Year under Altig's guidance.

After helping Penn State to a third NCAA quarterfinal appearance in four years in 2015, Altig was named IWLCA Assistant Coach of the Year and was inducted to the U.S. Lacrosse Virginia Chapter Hall of Fame.

Prior to her time at PSU, Altig held assistant coaching stints at Princeton University (2007-10) and the University of Richmond (2005-06).

As a goalkeeper at James Madison University from 2001-05, Altig led the Dukes to two CAA titles, was a two-time all-conference pick and was selected to the North/South STX Senior All-Star Game. A two-time team captain, she also earned a nod to the 2004 CAA All-Tournament Team and still ranks in the Top 12 of three career statistical categories at JMU.

Altig earned a spot on the USA National Team in 2003 and was part of the 2009 USA World Cup Training Team and 2008 USA Prague Touring Team. She also served as a field coach for USA Tryouts from 2015-17. Since 2017, Altig has been the defensive coordinator/goalkeepers coach for the USA National Team.

A native of Millersville, Md., Altig earned a bachelor's degree in kinesiology with a concentration in sports management from James Madison in 2005. She and her wife, Megan, have two daughters, Ava, and Ryan, and a son, Brooks.

ALTIG'S COACHING ASSIGNMENTS

| YEAR | SCHOOL | POSITION |
|------------|------------|----------------------|
| 2020-Pres. | Delaware | Head Coach |
| 2017-19 | Penn State | Associate Head Coach |
| 2011-16 | Penn State | Assistant Coach |
| 2007-10 | Princeton | Assistant Coach |
| 2005-06 | Richmond | Assistant Coach |

SUPERLATIVES UNDER ALTIG

| | | | |
|--------------|----------------------------------|-------------------|--|
| Most Goals | 20, vs. Delaware State (2/24/21) | Most Opp. Goals | 20, 2x, last vs. Drexel (5/1/25) |
| Fewest Goals | 2, 2x, last at Maryland (3/1/22) | Fewest Opp. Goals | 3, vs. Delaware State (2/24/21) |
| Most SOG | 36, vs. Delaware State (2/24/21) | Most Opp. SOG | 36, at Maryland (3/1/22) |
| Fewest SOG | 6, vs. Stony Brook (4/6/24) | Fewest Opp. SOG | 6, 2x, last vs. Lafayette (3/6/24) |
| Most GBs | 33, vs. Lafayette (3/6/24) | Most Opp. GBs | 30, vs. William & Mary (4/9/22) |
| Most CTs | 26, vs. Lafayette (3/6/24) | Most Opp. CTs | 19, vs. Lafayette (3/6/24) |
| Most DCs | 26, vs. Old Dominion (2/25/23) | Most Opp. DCs | 28, vs. Georgetown (3/8/25) |
| Most Saves | 21, at Maryland (3/1/22) | Most Opp. Saves | 20, 2x, last at Old Dominion (3/26/22) |

ASSISTANT COACHES

KARA NAKRASIUS



Kara Nakrasius joined the coaching staff in August 2022 as an assistant coach and was promoted to associate head coach in June 2025. Nakrasius works primarily with the program's defensive and draw control units.

Under her guidance, the UD defense ranked in the top-10 nationally in 2024 and 2025 in caused turnovers per game. In 2024, the Blue Hens held opponents to the least number of goals allowed (160) since the 2017 season. Madison Hranicka earned back-to-back CAA Defensive Player of the Year recognition in 2023 and 2024.

At the draw, Nakrasius oversaw Delaware's unit that shattered the program record for draws in a single season (240) in 2023, averaging a CAA-leading 15.0 draw controls per game. Delaware set a program record with 26 draw controls in a single-game against Old Dominion. Danielle Livornese became UD's career draw control leader, finishing with 223. Ella Rishko set the individual single-game mark with 15 draw controls against Towson in 2025.

Prior to her arrival at UD, Nakrasius was on staff at Quinnipiac as an assistant coach in 2022, leading a defense that allowed a league-low 197 goals and ranked second in the MAAC with 8.88 caused turnovers per game.

Nakrasius was a five-year starter at Temple from 2016-21, where she was a four-year captain for the Owls. She broke the career draw control record with a total of 236 and ranked seventh in program history with 144 ground balls.

She was a two-time all-conference selection, earning All-AAC First Team honors in 2019 and second team recognition in 2021. Nakrasius was a four-time winner of the Devon Marie Lam "T" Means More Award which is given to the person who most exemplifies Temple Lacrosse through selflessness, dedication & desire for team success (2017-20). She was also a winner of the Enterprise Spirit & Sportsmanship Award (2017) & Parliament Award (2019) for the student-athlete who has demonstrated a devotion to the essence of sport through their acts of sportsmanship.

Nakrasius earned both her bachelor's (2020) and master's (2021) degrees from Temple University.

SAMANTHA PRATT



Sam Pratt joined the Delaware women's lacrosse coaching staff as an associate head coach and offensive coordinator in August 2024.

In her first season with the Blue Hens, UD's offense averaged 13.06 goals per game to rank third in the CAA and was second in assists per game (6.25). Delaware led the conference and ranked sixth nationally with a .545 free position percentage, and Morgan Gore set the program record with 13 free position goals. Gore and Delaney McDaniel were named to the All-CAA Second Team while Lulu Rishko earned all-rookie honors.

Pratt came to Delaware after spending six seasons on the coaching staff at Mount St. Mary's. During her tenure, Pratt coached 29 student-athletes to all-league honors between the Northeast Conference (NEC) and the Metro Atlantic Athletic Conference (MAAC). The team posted a 63-35 record and sported a pair of NEC Offensive Players of the Year, an NEC Midfielder of the Year, and a NEC Rookie of the Year. Her offense in 2019 ranked 20th nationally in scoring with 14.11 goals per game. Two years later, the team finished 14th in the country with 15.06 goals per game.

Prior to joining the staff at Mount St. Mary's Pratt spent a season at La Salle where she served as offensive coordinator.

Pratt, then Sam Nolan, was a two-year team captain at UMBC (2013-17). She finished her career with 117 goals and 73 assists for 190 points, graduating as the program's all-time leader in assists, and ranked third in career points. She was a First Team All-America East selection in her final two seasons.

The Fallston, Maryland native earned a pair of degrees from UMBC in sociology (2016) and media and communication (2017). She received a master's degree in sport management from Mount St. Mary's in 2019.

Sam and her husband, Joe, a former UMBC men's soccer player, were married in 2022. The two have a pair of labrador retrievers, Finley & Champion.

LILLY SISKIND



Lilly Siskind joined the Blue Hens after a five-year collegiate career at Old Dominion University, where she set multiple program records and garnered national recognition.

While at ODU, Siskind was a starter in 74 of 80 career games played. She collected 214 points with 149 goals and 65 assists over her five seasons with the program, adding 46 ground balls, 30 draw controls, and 33 caused turnovers.

Nationally, Siskind ranked in the top 10 for most career points in American Athletic Conference (AAC) history. In 2022, she ranked fourth & second in the AAC and 25th & 22nd national for most points and goals, respectively. Additionally, she earned First Team All-AAC in 2022, Second Team All-AAC in 2021, and VaSIDA All-State Second Team in 2021 & 2022.

Siskind left her mark on the ODU program, finishing third in career points, fourth career assists, and fifth in career goals.

Off the field, Siskind completed two bachelor's degrees in marketing and management along with a master's degree in sports management over her five-year tenure at ODU. She picked up an Academic All-District honor this past season as well as recognition from the AAC All-Academic, Conference USA academic honor roll, Big East academic honor roll, and ODU honor roll.

Siskind grew up in West Chester, Pennsylvania where she played lacrosse at Henderson High School. Her father was also a collegiate lacrosse player and spent his career at Towson where he was given All-American status his senior season.

SUPPORT STAFF

Jake Schrum

Sport Administrator

Wes Hamilton

Academic Advisor

Kelly Stafford

Athletic Trainer

Dr. Christine Jehu

Sport Psychologist

Austin Mark

Team Nutritionist

Jack Levis

Equipment Manager

Brendan Thomas

Athletic Communications

Ryan Stiles

Strength & Conditioning Coach

UNIVERSITY OF DELAWARE

IN THE RANKINGS

The University of Delaware is ranked in the top 1.6% globally, among nearly 21,000 institutions, based on educational quality, employability, faculty quality and research. In late 2024, Wall Street Journal ranked UD at No. 10 among public universities and No. 26 among all U.S. universities based on student professional readiness and career outcomes.

Physical Therapy graduate program
No. 1 in the nation
(U.S. News & World Report)

One of 24 UD graduate programs ranked in the top-100 by U.S. News

Entrepreneurship undergraduate program
No. 3 in the Mid-Atlantic
(The Princeton Review)

Chemical Engineering undergraduate program
No. 4 in the nation
(U.S. News & World Report)

One of six UD undergraduate programs ranked in the top-100 by U.S. News

Chemical Engineering graduate program
No. 8 in the nation
(U.S. News & World Report)

One of 24 UD graduate programs ranked in the top-100 by U.S. News

Online MBA program
No. 20 out of 355 in the nation
(U.S. News & World Report)

Online Master's in Education program
No. 20 out of 313 in the nation
(U.S. News & World Report)

Nursing undergraduate program
No. 40 in the nation
(U.S. News & World Report)
A 34-spot jump from last year's ranking

BEST VALUE

UD ranks among the country's best value propositions, according to U.S. News & World Report, Wall Street Journal, Kiplinger's and Forbes. This summer, The Princeton Review ranked UD among its 209 Best Value Colleges for 2025, earning one of the publication's highest return-on-investment ratings. Money magazine awarded UD 4½ stars out of a possible five in its 2025-26 rating of America's best colleges. The University, according to Money, "stands out for its affordability" as a public college providing an excellent value for in-state students, and is considered one of the Best Colleges in the Northeast.

distinguished history

In 1743, the school that would become the University of Delaware was just a tiny institution, with a graduating class of about a dozen. Three of those graduates – **Thomas McKean**, **George Read** and **James Smith** – would go on to sign the Declaration of Independence; Read would also sign the U.S. Constitution, helping launch a new paradigm of freedom for an entire nation and a beacon of liberty for much of the world.

first in study abroad

In 1923, UD initiated a program to enhance students' learning by giving them an overseas experience. Influenced by the carnage he saw as an ambulance driver in World War I, professor **Raymond Kirkbride** believed that understanding other cultures was critical to promoting peace. His idea would grow into the first study-abroad program in the United States. Today approximately a third of all UD students participate in study abroad programs offered around the world. This year, the University celebrates the 10-year anniversary of its World Scholars Program, through which a cohort of new students experience their first UD semester abroad. These students return to UD for the spring and, as juniors, they can elect one of 40 study-abroad experiences.

introducing ud's new leadership

Interim President **Laura Carlson** and Interim Provost **Bill Farquhar** have been at the helm since July 1. Carlson joined the University of Delaware community in 2022, serving as its chief academic officer when she became the University's 12th Provost. Farquhar has been a faculty member for more than 23 years in UD's Department of Kinesiology and Applied Physiology. He most recently served as the dean of UD's College of Health Sciences.

student applications are climbing

Interest in a University of Delaware education continues to soar. UD received more than 40,000 applications for this year's class of first-year students, setting a UD record for the seventh consecutive year. Over the last year, UD hosted more than 38,000 visitors (prospective students and their families) at open houses and campus tours, and awarded more than \$200 million in financial aid to its newest students.

incorporating ai into curriculum

AI has the potential to reshape higher education. UD has applied this technology in myriad ways and continues to explore further applications for artificial intelligence – including the launch of new academic offerings like an undergraduate major, a graduate degree program and a certificate; the creation of UD's First State AI Institute; and the incorporation of generative AI into curricula.

PROMINENT ALUMNI



joe Biden '65



chris christie '84



joe flacco '08



elena delle donne '13

delaware STARTERS BY GAME

| OPPONENT | D | D | D | D | M | M | M | A | A | A | A | GK |
|------------------|---|---|---|---|---|---|---|---|---|---|---|----|
| at Temple | | | | | | | | | | | | |
| Rutgers | | | | | | | | | | | | |
| Navy | | | | | | | | | | | | |
| UMBC | | | | | | | | | | | | |
| at Georgetown | | | | | | | | | | | | |
| at Drexel | | | | | | | | | | | | |
| Mount St. Mary's | | | | | | | | | | | | |
| at Austin Peay | | | | | | | | | | | | |
| at Lindenwood | | | | | | | | | | | | |
| Jacksonville | | | | | | | | | | | | |
| Stetson | | | | | | | | | | | | |
| Saint Joseph's | | | | | | | | | | | | |
| Kennesaw State | | | | | | | | | | | | |
| Coastal Carolina | | | | | | | | | | | | |
| at Queens | | | | | | | | | | | | |
| at Liberty | | | | | | | | | | | | |

delaware STAT LEADERS BY GAME

| OPPONENT | GOALS | ASSISTS | POINTS | SOG | GB | CT | DC | SAVES |
|------------------|-------|---------|--------|-----|----|----|----|-------|
| at Temple | | | | | | | | |
| Rutgers | | | | | | | | |
| Navy | | | | | | | | |
| UMBC | | | | | | | | |
| at Georgetown | | | | | | | | |
| at Drexel | | | | | | | | |
| Mount St. Mary's | | | | | | | | |
| at Austin Peay | | | | | | | | |
| at Lindenwood | | | | | | | | |
| Jacksonville | | | | | | | | |
| Stetson | | | | | | | | |
| Saint Joseph's | | | | | | | | |
| Kennesaw State | | | | | | | | |
| Coastal Carolina | | | | | | | | |
| at Queens | | | | | | | | |
| at Liberty | | | | | | | | |



delaware HIGHS AND LOWS

GAME HIGHS**2026**

| | |
|--------------------|---------------------------------------|
| Goals | 20, vs. Delaware State (2/24/21) |
| Assists | 13, at William & Mary (3/30/24) |
| Goals in a Quarter | 9, 2x, last Q3 vs. Monmouth (4/27/24) |
| 1H Goals | 12, 2x, last vs. Kent State (2/25/24) |
| 2H Goals | 13, at William & Mary (3/30/24) |
| Shots Attempted | 47, vs. Lafayette, (2/15/23) |
| Shots on Goal | 36, vs. Delaware State (2/24/21) |
| Ground Balls | 33, vs. Lafayette (3/6/24) |
| Draw Controls | 26, vs. Old Dominion (2/25/23) |
| Turnovers | 28, vs. Old Dominion (2/25/23) |
| Caused Turnovers | 26, vs. Lafayette (3/6/24) |
| Saves | 21, at Maryland (3/1/22) |
| Clears | 27, vs. Lafayette (3/6/24) |

ALTIG ERA**GAME LOWS****2026**

| | |
|--------------------|--|
| Goals | 2, at Maryland (3/1/22) |
| Assists | 0, 2x, last at La Salle (2/27/21) |
| Goals in a Quarter | 0, 17x, last Q1 at Stony Brook (4/6/24) |
| 1H Goals | 0, 2x, last at Maryland (3/1/22) |
| 2H Goals | 1, 2x, last vs. Stony Brook (5/4/23) |
| Shots Attempted | 7, at Stony Brook (4/6/24) |
| Shots on Goal | 6, at Stony Brook (4/6/24) |
| Ground Balls | 6, vs. Temple (2/20/21) |
| Draw Controls | 5, 2x, last at Denver (3/13/23) |
| Turnovers | 9, 2x, last vs. Delaware State (2/24/21) |
| Caused Turnovers | 2, 2x, last at Stony Brook (3/18/23) |
| Saves | 3, 3x, last vs. Lafayette (3/6/24) |
| Clears | 10, at Monmouth (3/30/25) |

ALTIG ERA**PLAYER HIGHS UNDER ALTIG**

| | |
|------------------|---|
| Goals | 6, Lizzie Yurchak, vs. Monmouth, 3/25/23 |
| Assists | 7, Delaney McDaniel, vs. Lafayette, 2/15/23 |
| Points | 9, Jaclyn Marszal, at William & Mary, 3/30/24 |
| Shots Attempted | 13, Mia DeRuggiero, vs. Elon, 3/7/20 |
| Shots on Goal | 8, 3x, last Lizzie Hsu, at Hofstra, 4/8/23 |
| Ground Balls | 8, Madison Hranicka, vs. Lafayette, 3/6/24 |
| Caused Turnovers | 11, Madison Hranicka, vs. Lafayette, 3/6/24 |
| Turnovers | 7, Mia DeRuggiero, vs. Duquesne, 3/4/20 |
| Draw Controls | 15, Ella Rishko, at Towson, 4/13/25 |
| Saves | 18, Kate Brewster, at Rutgers, 2/15/20 |

opponent

HIGHS AND LOWS

GAME HIGHS

2026

| | |
|--------------------|--|
| Goals | 20, 2x, last at Drexel (5/1/25) |
| Goals in a Quarter | 9, Q3 vs. Stony Brook (5/4/23) |
| 1H Goals | 12, 3x, at Drexel (5/1/25) |
| 2H Goals | 11, 4x, last vs. Stony Brook (5/4/23) |
| Shots Attempted | 46, vs. Hofstra (4/14/24) |
| Shots on Goal | 36, at Maryland (3/1/22) |
| Ground Balls | 30, vs. William & Mary (4/9/22) |
| Draw Controls | 28, vs. Georgetown (3/8/25) |
| Turnovers | 34, vs. Lafayette (3/6/24) |
| Caused Turnovers | 19, vs. Lafayette (3/6/24) |
| Saves | 20, 2x, last at Old Dominion (3/26/22) |
| Clears | 26, vs. Towson (3/24/24) |

ALTIG ERA

GAME LOWS

2026

| | |
|--------------------|--|
| Goals | 3, vs. Delaware State (2/24/21) |
| Goals in a Quarter | 0, 20x, last Q4 vs. William & Mary (4/19/25) |
| 1H Goals | 1, 4x, last vs. Lafayette (3/6/24) |
| 2H Goals | 0, vs. Elon (3/7/20) |
| Shots Attempted | 9, vs. Delaware State (2/24/21) |
| Shots on Goal | 6, 2x, last vs. Lafayette (3/6/24) |
| Ground Balls | 6, at Campbell (4/11/25) |
| Draw Controls | 2, vs. Towson (3/24/24) |
| Turnovers | 7, at Stony Brook (3/18/23) |
| Caused Turnovers | 2, at Drexel (3/30/22) |
| Saves | 2, at Stony Brook (4/6/24) |
| Clears | 7, vs. Delaware State (2/24/21) |

ALTIG ERA

DELAWARE SINGLE GAME RECORDS

| | INDIVIDUAL | TEAM |
|------------------|---|---------------------------------|
| Goals | 11, Ann Pasquariello, vs. Hofstra, 5/12/79 | 36, vs. Towson State, 4/24/86 |
| Assists | 9, 2x, last Mia DeRuggiero vs. Oregon 3/27/19 | 18, vs. Hofstra, 4/22/90 |
| Points | 16, Karen Emas, vs. Bucknell, 4/17/84 | 49, vs. Towson State, 4/24/86 |
| Shots Attempted | -- | 65, vs. Towson State, 4/24/86 |
| Shots on Goal | 8, 3x, last Lizzie Hsu, at Hofstra, 4/8/23 | 36, vs. Delaware State, 2/24/21 |
| Ground Balls | 17, Lisa Blanc, vs. Lehigh, 5/8/83 | 88, vs. Bucknell, 4/18/87 |
| Caused Turnovers | 11, Madison Hranicka, vs. Lafayette, 3/6/24 | 26, vs. Lafayette, 3/6/24 |
| Draw Controls | 15, Ella Rishko, at Towson, 4/13/25 | 26, vs. Old Dominion, 2/25/23 |
| Saves | 36, Lisa McBeth, at West Chester, 5/5/78 | 36, vs. West Chester, 5/5/78 |

delaware SEASON STATS

2025 University of Delaware Women's Lacrosse Overall Statistics (as of May 1, 2025)

| Record: | Overall | Home | Away | Neutral |
|----------------|---------|------|------|---------|
| All Games | 10-6 | 4-4 | 6-1 | 0-1 |
| Conference | 6-2 | 2-2 | 4-0 | 0-0 |
| Non-Conference | 4-4 | 2-2 | 2-1 | 0-1 |

| Date | Opponent | WL | Score | Att. |
|---------|---------------------|----|-------|------|
| 2/07/25 | TEMPLE | W | 12-10 | 255 |
| 2/15/25 | at Rutgers | L | 9-13 | 302 |
| 2/22/25 | at Mount St. Mary's | W | 12-9 | 154 |
| 2/26/25 | PRI | L | 14-15 | 276 |
| 3/01/25 | WAGNER | W | 14-6 | 355 |
| 3/05/25 | at UMBC | W | 16-8 | 133 |
| 3/08/25 | GEORGETOWN | L | 14-20 | 437 |
| 3/14/25 | at Hofstra | W | 15-9 | 277 |
| 3/21/25 | DREXEL | L | 10-12 | 372 |
| 3/23/25 | STONY BROOK | L | 8-16 | 522 |
| 3/30/25 | at Monmouth | W | 10-9 | 254 |
| 4/04/25 | ELON | W | 16-9 | 367 |
| 4/11/25 | at Campbell | W | 15-11 | 114 |
| 4/13/25 | at Towson | W | 16-15 | 508 |
| 4/19/25 | WILLIAM & MARY | W | 17-4 | 515 |
| 5/01/25 | at DREXEL | L | 11-20 | 350 |

| Team Statistics | DELAWARE | OPP |
|------------------------------------|----------|---------|
| SHOT STATISTICS | | |
| Goals-Shot Att. | 209-458 | 186-427 |
| Goals Per Game | 13.06 | 11.63 |
| Shot Pct. | .456 | .436 |
| Shots on Goal-Att. | 358-458 | 311-427 |
| SOG Pct. | .782 | .728 |
| Shots/Game | 28.6 | 26.7 |
| Assists | 100 | 91 |
| FREE POSITION OPPORTUNITIES | | |
| Free Position Made-Att. | 48-88 | 36-79 |
| Free Position pct. | .545 | .456 |
| GOAL BREAKDOWN | | |
| Total Goals | 209 | 186 |
| Free Position | 48 | 36 |
| Unassisted | 109 | 95 |
| Overtime | 0 | 0 |
| Goals Scored Avg | 13.06 | 11.63 |
| GROUND BALLS | 280 | 254 |
| DRAW CONTROLS | 210 | 238 |
| TURNOVERS | 234 | 277 |
| CAUSED TURNOVERS | 185 | 135 |
| CLEARs | 283-327 | 264-315 |
| Clear Pct. | .865 | .838 |
| SHOT CLOCK VIOLATIONS | 6 | 9 |
| ATTENDANCE | | |
| Total | 3,099 | 2,092 |
| Dates-Avg Per Date | 8/387 | 8/262 |
| Neutral Site #-Avg | 0/ | |

| # | Player | GP | G | A | PTS | SH | GW | GB | DC | TO | CT | FOULS |
|------------------|---------------------|-----------|------------|------------|------------|------------|-----------|------------|------------|------------|------------|------------|
| 25 | McDaniel, Delaney | 16 | 30 | 31 | 61 | 75 | 1 | 14 | 2 | 42 | 6 | 5 |
| 8 | Marszal, Jaclyn | 16 | 21 | 29 | 50 | 53 | 1 | 14 | 0 | 24 | 1 | 2 |
| 32 | Rishko, Ella | 16 | 36 | 9 | 45 | 89 | 1 | 16 | 55 | 29 | 14 | 14 |
| 6 | Saroney, Halen | 16 | 33 | 4 | 37 | 59 | 0 | 10 | 17 | 9 | 11 | 10 |
| 17 | Gore, Morgan | 16 | 30 | 2 | 32 | 53 | 2 | 20 | 15 | 24 | 10 | 10 |
| 16 | Drab, Callie | 16 | 13 | 11 | 24 | 25 | 1 | 7 | 0 | 9 | 2 | 0 |
| 34 | Sturtevant, Riley | 16 | 13 | 2 | 15 | 24 | 2 | 11 | 0 | 13 | 6 | 6 |
| 20 | Paradise, Sam | 9 | 12 | 2 | 14 | 24 | 0 | 5 | 29 | 10 | 4 | 3 |
| 23 | Rishko, Lulu | 14 | 7 | 4 | 11 | 14 | 0 | 13 | 0 | 4 | 7 | 5 |
| 5 | Grant, Kiki | 16 | 6 | 4 | 10 | 15 | 0 | 12 | 0 | 9 | 5 | 14 |
| 13 | Craytor, Maggie | 7 | 5 | 0 | 5 | 12 | 2 | 1 | 0 | 2 | 1 | 0 |
| 14 | Muscolino, Sophia | 10 | 2 | 0 | 2 | 6 | 0 | 1 | 0 | 3 | 0 | 0 |
| 3 | Gormley, Erin | 16 | 0 | 2 | 2 | 2 | 0 | 36 | 36 | 11 | 32 | 38 |
| 4 | Rochon, Bryn | 2 | 1 | 0 | 1 | 6 | 0 | 0 | 0 | 1 | 0 | 1 |
| 9 | Baseggio, Kat | 16 | 0 | 0 | 0 | 1 | 0 | 29 | 1 | 7 | 23 | 21 |
| 41 | Baumgratz, Molly | 12 | 0 | 0 | 0 | 0 | 0 | 0 | 14 | 1 | 0 | 2 |
| 2 | Buono, Grayson | 13 | 0 | 0 | 0 | 0 | 0 | 0 | 21 | 1 | 1 | 1 |
| 10 | Didio, McKenzie | 2 | 0 | 0 | 0 | 0 | 0 | 0 | 0 | 0 | 0 | 0 |
| 15 | Farinacci, Julianna | 1 | 0 | 0 | 0 | 0 | 0 | 0 | 0 | 0 | 0 | 0 |
| 28 | Farragher, Maggie | 15 | 0 | 0 | 0 | 0 | 0 | 20 | 0 | 9 | 13 | 13 |
| 38 | Hoeflich, Lara | 2 | 0 | 0 | 0 | 0 | 0 | 0 | 0 | 0 | 1 | 1 |
| 12 | Hoffman, Emma | 7 | 0 | 0 | 0 | 0 | 0 | 4 | 0 | 0 | 3 | 1 |
| 40 | Marszal, Steph | 14 | 0 | 0 | 0 | 0 | 0 | 18 | 0 | 4 | 5 | 0 |
| 22 | Matey, Mary | 7 | 0 | 0 | 0 | 0 | 0 | 0 | 0 | 1 | 1 | 5 |
| 21 | Mercer, Kate | 7 | 0 | 0 | 0 | 0 | 0 | 0 | 8 | 0 | 0 | 1 |
| 27 | Mobililia, Maddy | 16 | 0 | 0 | 0 | 0 | 0 | 16 | 5 | 5 | 16 | 31 |
| 29 | Radziul, Kennedy | 15 | 0 | 0 | 0 | 0 | 0 | 20 | 1 | 2 | 12 | 19 |
| 30 | Reed, Natalie | 5 | 0 | 0 | 0 | 0 | 0 | 3 | 0 | 0 | 0 | 0 |
| 18 | Stolarick, Lena | 13 | 0 | 0 | 0 | 0 | 0 | 10 | 3 | 4 | 8 | 12 |
| TM | Team | 15 | 0 | 0 | 0 | 0 | 0 | 0 | 3 | 10 | 3 | 21 |
| Totals | | 16 | 209 | 100 | 309 | 458 | 10 | 280 | 210 | 234 | 185 | 236 |
| Opponents | | 16 | 186 | 91 | 277 | 427 | 6 | 254 | 238 | 277 | 135 | 297 |

| # | Goalie | GP | MIN | GA | GAA | SAVE | PCT | W-L-T |
|------------------|----------------|-----------|---------------|------------|--------------|------------|-------------|---------------|
| 30 | Reed, Natalie | 5 | 166:09 | 32 | 11.56 | 19 | .373 | 2-1-0 |
| 40 | Marszal, Steph | 14 | 793:00 | 154 | 11.65 | 106 | .408 | 8-5-0 |
| Totals | | 19 | 959:09 | 186 | 11.64 | 125 | .402 | 10-6-0 |
| Opponents | | 17 | 959:09 | 209 | 13.07 | 149 | .416 | 6-10-0 |

| Goals by Period | 1st | 2nd | 3rd | 4th | Total |
|-----------------|-----|-----|-----|-----|-------|
| DELAWARE | 57 | 56 | 51 | 45 | 209 |
| Opponents | 55 | 35 | 44 | 52 | 186 |

| Saves by Period | 1st | 2nd | 3rd | 4th | Total |
|-----------------|-----|-----|-----|-----|-------|
| DELAWARE | 26 | 38 | 31 | 30 | 125 |
| Opponents | 29 | 47 | 40 | 33 | 149 |

| Shots by Period | 1st | 2nd | 3rd | 4th | Total |
|-----------------|-----|-----|-----|-----|-------|
| DELAWARE | 114 | 132 | 111 | 101 | 458 |
| Opponents | 109 | 108 | 96 | 114 | 427 |

| Shot on Goal | 1st | 2nd | 3rd | 4th | Total |
|--------------|-----|-----|-----|-----|-------|
| DELAWARE | 86 | 103 | 91 | 78 | 358 |
| Opponents | 81 | 73 | 75 | 82 | 311 |

delaware NCAA RANKINGS

| Statistic | National Rank | Conference Rank | Value | National Leader | Value | Conference Leader | Value |
|--|---------------|-----------------|-------|-----------------|-------|-------------------|-------|
| Assists Per Game (128 ranked) | 38 | 2 | 6.25 | Boston College | 9.41 | Stony Brook | 8.19 |
| Assists Per Game (0 ranked) | | | | | | | |
| Caused Turnovers Per Game (128 ranked) | 8 | 1 | 11.19 | Liberty | 17.30 | Delaware | 11.19 |
| Clearing Percentage (128 ranked) | 76 | 9 | 0.865 | North Carolina | 0.952 | Drexel | 0.934 |
| Draw Control Percentage (128 ranked) | 81 | 5 | 0.469 | Loyola Maryland | 0.699 | Elon | 0.563 |
| Draw Controls Per Game (128 ranked) | 71 | 5 | 13.13 | Loyola Maryland | 20.25 | Drexel | 15.11 |
| Face-Off Win Percentage (8 ranked) | | | | Dartmouth | 0.833 | | |
| Fouls Per Game (128 ranked) | 79 | 4 | 14.75 | La Salle | 5.06 | Monmouth | 11.69 |
| Free Position Percentage (128 ranked) | 6 | 1 | 0.545 | UAlbany | 0.629 | Delaware | 0.545 |
| Ground Balls Per Game (128 ranked) | 39 | 4 | 17.19 | Liberty | 22.15 | Drexel | 18.72 |
| Points Per Game (128 ranked) | 42 | 3 | 19.31 | North Carolina | 26.68 | Stony Brook | 22.81 |
| Red Cards (2 ranked) | | | | Ohio St. | 2 | Elon | 1 |
| Saves Percentage (128 ranked) | 83 | 6 | 0.402 | Boston College | 0.555 | Drexel | 0.493 |
| Scoring Defense (128 ranked) | 60 | 4 | 11.63 | North Carolina | 6.86 | Stony Brook | 8.81 |
| Scoring Margin (68 ranked) | 44 | 3 | 1.44 | North Carolina | 10.59 | Stony Brook | 5.81 |
| Scoring Offense (128 ranked) | 41 | 3 | 13.06 | North Carolina | 17.45 | Stony Brook | 14.62 |
| Shot Percentage (128 ranked) | 20 | 3 | 0.456 | Furman | 0.528 | Hofstra | 0.471 |
| Shots Per Game (128 ranked) | 61 | 4 | 28.63 | Massachusetts | 36.79 | Stony Brook | 33.81 |
| Shots on Goal Per Game (128 ranked) | 36 | 3 | 22.44 | North Carolina | 27.91 | Stony Brook | 24.67 |
| Turnovers Per Game (128 ranked) | 50 | 4 | 14.63 | Florida | 10.35 | Stony Brook | 12.76 |
| Win Percentage (128 ranked) | 32 | 3 | 0.625 | North Carolina | 1.000 | Drexel | 0.778 |
| Yellow Cards (128 ranked) | 106 | 9 | 21 | Liberty | 59 | Stony Brook | 54 |

delaware NCAA RANKINGS

| Statistic | Player | National Rank | Conference Rank | Value | National Leader | Value | Conference Leader | Value |
|---|------------------------------------|---------------|-----------------|----------------|---------------------------------|-------|---------------------------------|-------|
| Assists (145 ranked) | Delaney McDaniel Jaelyn Marszal | 56 63 | 4 5 | 31 29 | Ashley Humphrey, North Carolina | 90 | Casey Colbert, Stony Brook | 57 |
| Assists Per Game (150 ranked) | Delaney McDaniel Jaelyn Marszal | 41 51 | 4 5 | 1.94 1.81 | Ashley Humphrey, North Carolina | 4.09 | Casey Colbert, Stony Brook | 2.71 |
| Caused Turnovers Per Game (148 ranked) | Erin Gormley Kat Baseggio | 31 77 | 2 8 | 1.81 1.44 | Reagan O'Brien, Johns Hopkins | 5.15 | Avery Hines, Stony Brook | 3.52 |
| Draw Controls Per Game (148 ranked) | Ella Rishko | 131 | 13 | 3.38 | Maya Kendall, Dartmouth | 12.53 | Braeden Siverson, Stony Brook | 5.79 |
| Face-Off Win Percentage (15 ranked) | | | | | Madison Prietz, Robert Morris | 1.000 | | |
| Free Position Goals Per Game (136 ranked) | Morgan Gore Ella Rishko | 32 110 | 2 9 | 0.81 0.56 | Emma Blloshmi, Binghamton | 2.00 | Allison Drake, Drexel | 0.94 |
| Free Position Percentage (149 ranked) | Morgan Gore Ella Rishko | 21 120 | 1 9 | 0.619 0.429 | Jenna Irwin, Robert Morris | 0.778 | Morgan Gore, Delaware | 0.619 |
| Goals (148 ranked) | | | | | Madison Taylor, Northwestern | 109 | Charlotte Wilmoth, Stony Brook | 64 |
| Goals Per Game (149 ranked) | | | | | Madison Taylor, Northwestern | 4.95 | Nikki Mennella, Hofstra | 4.13 |
| Goals-Against Average (116 ranked) | Steph Marszal | 52 | 4 | 11.65 | Betty Nelson, North Carolina | 7.37 | Natalia Altebrando, Stony Brook | 8.16 |
| Ground Balls Per Game (150 ranked) | Erin Gormley | 97 | 8 | 2.13 | Maddy Porter, Eastern Mich. | 4.18 | Christine Dannenfelser, Hofstra | 2.63 |
| Points (145 ranked) | Delaney McDaniel | 127 | 12 | 61 | Madison Taylor, Northwestern | 158 | Nikki Mennella, Hofstra | 99 |
| Points Per Game (149 ranked) | Delaney McDaniel | 82 | 6 | 3.81 | Madison Taylor, Northwestern | 7.18 | Nikki Mennella, Hofstra | 6.60 |
| Save Percentage (116 ranked) | Steph Marszal | 81 | 6 | 0.408 | Shea Dolce, Boston College | 0.549 | Jenika Cuocco, Drexel | 0.493 |
| Saves (149 ranked) | Steph Marszal | 99 | 8 | 106 | Shea Dolce, Boston College | 202 | Jenika Cuocco, Drexel | 173 |
| Saves Per Game (116 ranked) | Steph Marszal | 69 | 6 | 7.57 | Alexa Martel, Central Mich. | 12.00 | Katie Sullivan, Monmouth | 11.40 |
| Shot Percentage (148 ranked) | Morgan Gore Halen Saroney | 7 20 | 2 3 | 0.588 0.559 | Ava Connaughton, Massachusetts | 0.700 | Allison Drake, Drexel | 0.625 |
| Shots Per Game (150 ranked) | Ella Rishko | 119 | 10 | 5.44 | Meg Bireley, Marquette | 10.63 | Nikki Mennella, Hofstra | 8.33 |
| Shots on Goal Per Game (150 ranked) | Ella Rishko | 121 | 10 | 4.06 | Meg Bireley, Marquette | 7.50 | Nikki Mennella, Hofstra | 6.13 |

#1 STELLA STOLARICK | A | SO. | HADDONFIELD, N.J.

| CAREER-HIGHS | | SEASON-HIGHS | | CAREER STATS | | | | | | | | |
|------------------|-----|------------------|-----|--------------|------------|----------|----------|----------|----------|----------|----------|----------|
| GOALS | N/A | GOALS | N/A | YEAR | GP/GS | G | A | PTS | SOG | GB | CT | DC |
| ASSISTS | N/A | ASSISTS | N/A | 2025 | 0/0 | 0 | 0 | 0 | 0 | 0 | 0 | 0 |
| POINTS | N/A | POINTS | N/A | 2026 | 0/0 | 0 | 0 | 0 | 0 | 0 | 0 | 0 |
| SHOTS ON GOAL | N/A | SHOTS ON GOAL | N/A | TOTAL | 0/0 | 0 | 0 | 0 | 0 | 0 | 0 | 0 |
| GROUND BALLS | N/A | GROUND BALLS | N/A | | | | | | | | | |
| CAUSED TURNOVERS | N/A | CAUSED TURNOVERS | N/A | | | | | | | | | |
| DRAW CONTROLS | N/A | DRAW CONTROLS | N/A | | | | | | | | | |

#2 GRAYSON BUONO | A | SO. | WAYNE, PA.

| CAREER-HIGHS | | SEASON-HIGHS | | CAREER STATS | | | | | | | | |
|------------------|-----------------------------|------------------|-----|--------------|-------------|----------|----------|----------|----------|----------|----------|-----------|
| GOALS | N/A | GOALS | N/A | YEAR | GP/GS | G | A | PTS | SOG | GB | CT | DC |
| ASSISTS | N/A | ASSISTS | N/A | 2025 | 13/2 | 0 | 0 | 0 | 0 | 0 | 1 | 21 |
| POINTS | N/A | POINTS | N/A | 2026 | 0/0 | 0 | 0 | 0 | 0 | 0 | 0 | 0 |
| SHOTS ON GOAL | N/A | SHOTS ON GOAL | N/A | TOTAL | 13/2 | 0 | 0 | 0 | 0 | 0 | 1 | 21 |
| GROUND BALLS | N/A | GROUND BALLS | N/A | | | | | | | | | |
| CAUSED TURNOVERS | 1, vs Drexel, 3/21/25 | CAUSED TURNOVERS | N/A | | | | | | | | | |
| DRAW CONTROLS | 5, vs. Stony Brook, 3/23/25 | DRAW CONTROLS | N/A | | | | | | | | | |

#3 LARA HOEFELICH | D | SO. | GLENELG, MD.

| CAREER-HIGHS | | SEASON-HIGHS | | CAREER STATS | | | | | | | | |
|------------------|-----------------------|------------------|-----|--------------|------------|----------|----------|----------|----------|----------|----------|----------|
| GOALS | N/A | GOALS | N/A | YEAR | GP/GS | G | A | PTS | SOG | GB | CT | DC |
| ASSISTS | N/A | ASSISTS | N/A | 2025 | 2/0 | 0 | 0 | 0 | 0 | 0 | 1 | 0 |
| POINTS | N/A | POINTS | N/A | 2026 | 0/0 | 0 | 0 | 0 | 0 | 0 | 0 | 0 |
| SHOTS ON GOAL | N/A | SHOTS ON GOAL | N/A | TOTAL | 2/0 | 0 | 0 | 0 | 0 | 0 | 1 | 0 |
| GROUND BALLS | N/A | GROUND BALLS | N/A | | | | | | | | | |
| CAUSED TURNOVERS | 1, vs. Temple, 2/7/25 | CAUSED TURNOVERS | N/A | | | | | | | | | |
| DRAW CONTROLS | N/A | DRAW CONTROLS | N/A | | | | | | | | | |

#4 MARIN MOONEY | A | FR. | VILLANOVA, PA.

| CAREER-HIGHS | | SEASON-HIGHS | | CAREER STATS | | | | | | | | |
|------------------|-----|------------------|-----|--------------|------------|----------|----------|----------|----------|----------|----------|----------|
| GOALS | N/A | GOALS | N/A | YEAR | GP/GS | G | A | PTS | SOG | GB | CT | DC |
| ASSISTS | N/A | ASSISTS | N/A | 2026 | 0/0 | 0 | 0 | 0 | 0 | 0 | 0 | 0 |
| POINTS | N/A | POINTS | N/A | TOTAL | 0/0 | 0 | 0 | 0 | 0 | 0 | 0 | 0 |
| SHOTS ON GOAL | N/A | SHOTS ON GOAL | N/A | | | | | | | | | |
| GROUND BALLS | N/A | GROUND BALLS | N/A | | | | | | | | | |
| CAUSED TURNOVERS | N/A | CAUSED TURNOVERS | N/A | | | | | | | | | |
| DRAW CONTROLS | N/A | DRAW CONTROLS | N/A | | | | | | | | | |

#6 JENNY GREEN | D | FR. | GARNET VALLEY, PA.

| CAREER-HIGHS | | SEASON-HIGHS | | CAREER STATS | | | | | | | | |
|------------------|-----|------------------|-----|--------------|------------|----------|----------|----------|----------|----------|----------|----------|
| GOALS | N/A | GOALS | N/A | YEAR | GP/GS | G | A | PTS | SOG | GB | CT | DC |
| ASSISTS | N/A | ASSISTS | N/A | 2026 | 0/0 | 0 | 0 | 0 | 0 | 0 | 0 | 0 |
| POINTS | N/A | POINTS | N/A | TOTAL | 0/0 | 0 | 0 | 0 | 0 | 0 | 0 | 0 |
| SHOTS ON GOAL | N/A | SHOTS ON GOAL | N/A | | | | | | | | | |
| GROUND BALLS | N/A | GROUND BALLS | N/A | | | | | | | | | |
| CAUSED TURNOVERS | N/A | CAUSED TURNOVERS | N/A | | | | | | | | | |
| DRAW CONTROLS | N/A | DRAW CONTROLS | N/A | | | | | | | | | |

#7 JULIA CIUFO | M | JR. | REISTERSTOWN, MD.

| CAREER-HIGHS | | SEASON-HIGHS | | CAREER STATS | | | | | | | | |
|------------------|----------------------------------|------------------|-----|--------------|------------|----------|----------|----------|----------|----------|----------|----------|
| GOALS | 1, vs. Mount St. Mary's, 2/17/24 | GOALS | N/A | YEAR | GP/GS | G | A | PTS | SOG | GB | CT | DC |
| ASSISTS | N/A | ASSISTS | N/A | 2024 | 4/0 | 1 | 0 | 1 | 3 | 4 | 2 | 0 |
| POINTS | 1, vs. Mount St. Mary's, 2/17/24 | POINTS | N/A | 2025 | 0/0 | 0 | 0 | 0 | 0 | 0 | 0 | 0 |
| SHOTS ON GOAL | 1, 3x, last at Temple, 2/21/24 | SHOTS ON GOAL | N/A | 2026 | 0/0 | 0 | 0 | 0 | 0 | 0 | 0 | 0 |
| GROUND BALLS | 3, at Temple, 2/21/24 | GROUND BALLS | N/A | TOTAL | 4/0 | 1 | 0 | 1 | 3 | 4 | 2 | 0 |
| CAUSED TURNOVERS | 1, at Temple, 2/21/24 | CAUSED TURNOVERS | N/A | | | | | | | | | |
| DRAW CONTROLS | N/A | DRAW CONTROLS | N/A | | | | | | | | | |

#8 JACLYN MARSZAL | A | SR. | CATONSVILLE, MD.

| CAREER-HIGHS | | SEASON-HIGHS | | CAREER STATS | | | | | | | | |
|------------------|--|------------------|-----|--------------|--------------|-----------|-----------|-----------|-----------|-----------|----------|----------|
| GOALS | 5, at Lehigh, 2/9/24 | GOALS | N/A | YEAR | GP/GS | G | A | PTS | SOG | GB | CT | DC |
| ASSISTS | 6, at William & Mary, 3/30/24 | ASSISTS | N/A | 2023* | 5/0 | 2 | 0 | 2 | 3 | 0 | 0 | 0 |
| POINTS | 9, at William & Mary, 3/30/24 | POINTS | N/A | 2024 | 16/15 | 25 | 22 | 47 | 36 | 19 | 4 | 2 |
| SHOTS ON GOAL | 6, 2x, last vs. Drexel, 3/21/25 | SHOTS ON GOAL | N/A | 2025 | 16/8 | 21 | 29 | 50 | 44 | 14 | 1 | 0 |
| GROUND BALLS | 4, 2x, last at Mount St. Mary's, 2/22/25 | GROUND BALLS | N/A | 2026 | 0/0 | 0 | 0 | 0 | 0 | 0 | 0 | 0 |
| CAUSED TURNOVERS | 1, 5x, last at Towson 4/13/25 | CAUSED TURNOVERS | N/A | UD | 32/23 | 46 | 51 | 97 | 80 | 33 | 5 | 2 |
| DRAW CONTROLS | 1, 2x, last vs. Hofstra, 4/20/24 | DRAW CONTROLS | N/A | TOTAL | 37/23 | 48 | 51 | 99 | 84 | 33 | 5 | 2 |

* at Notre Dame

#9 KAT BASEGGIO | D | JR. | GUILFORD, CONN.

| CAREER-HIGHS | | SEASON-HIGHS | | CAREER STATS | | | | | | | | |
|------------------|--------------------------------------|------------------|-----|--------------|--------------|----------|----------|----------|----------|-----------|-----------|----------|
| GOALS | N/A | GOALS | N/A | YEAR | GP/GS | G | A | PTS | SOG | GB | CT | DC |
| ASSISTS | N/A | ASSISTS | N/A | 2024 | 16/15 | 0 | 0 | 0 | 0 | 14 | 5 | 0 |
| POINTS | N/A | POINTS | N/A | 2025 | 16/16 | 0 | 0 | 0 | 0 | 29 | 23 | 1 |
| SHOTS ON GOAL | N/A | SHOTS ON GOAL | N/A | 2026 | 0/0 | 0 | 0 | 0 | 0 | 0 | 0 | 0 |
| GROUND BALLS | 4, 2x, last vs. Stony Brook, 3/23/25 | GROUND BALLS | N/A | TOTAL | 32/31 | 0 | 0 | 0 | 0 | 43 | 28 | 1 |
| CAUSED TURNOVERS | 4 vs. Stony Brook, 3/23/25 | CAUSED TURNOVERS | N/A | | | | | | | | | |
| DRAW CONTROLS | 1, vs. Princeton, 2/26/25 | DRAW CONTROLS | N/A | | | | | | | | | |

#10 MCKENZIE DIDIO | A | SR. | WESTPORT, CONN.

| CAREER-HIGHS | | SEASON-HIGHS | | CAREER STATS | | | | | | | | |
|-------------------------------------|-----|------------------|-----|--------------|-------------|-----------|----------|-----------|-----------|----------|----------|----------|
| GOALS | | GOALS | | YEAR | GP/GS | G | A | PTS | SOG | GB | CT | DC |
| 2, 3x, last vs. Kent State, 2/25/24 | | | N/A | 2023 | 16/1 | 10 | 0 | 10 | 23 | 1 | 0 | 0 |
| ASSISTS | | ASSISTS | | 2024 | 9/0 | 5 | 0 | 5 | 8 | 1 | 0 | 0 |
| | N/A | | N/A | 2025 | 2/0 | 0 | 0 | 0 | 0 | 0 | 0 | 0 |
| POINTS | | POINTS | | 2026 | 0/0 | 0 | 0 | 0 | 0 | 0 | 0 | 0 |
| 2, 3x, last vs. Kent State, 2/25/24 | | | N/A | TOTAL | 27/1 | 15 | 0 | 15 | 31 | 2 | 0 | 0 |
| SHOTS ON GOAL | | SHOTS ON GOAL | | | | | | | | | | |
| 5, vs. Old Dominion, 2/25/23 | | | N/A | | | | | | | | | |
| GROUND BALLS | | GROUND BALLS | | | | | | | | | | |
| 1, 2x, last vs. Campbell (4/12/24) | | | N/A | | | | | | | | | |
| CAUSED TURNOVERS | | CAUSED TURNOVERS | | | | | | | | | | |
| | N/A | | N/A | | | | | | | | | |
| DRAW CONTROLS | | DRAW CONTROLS | | | | | | | | | | |
| | N/A | | N/A | | | | | | | | | |

#11 JULIA REAGAN | M | SR. | EAST ATLANTIC BEACH, N.Y.

| CAREER-HIGHS | | SEASON-HIGHS | | CAREER STATS | | | | | | | | |
|-----------------------|-----|------------------|-----|--------------|------------|----------|----------|----------|----------|----------|----------|----------|
| GOALS | | GOALS | | YEAR | GP/GS | G | A | PTS | SOG | GB | CT | DC |
| | N/A | | N/A | 2023 | 1/0 | 0 | 0 | 0 | 0 | 0 | 0 | 1 |
| ASSISTS | | ASSISTS | | 2024 | 1/0 | 0 | 0 | 0 | 0 | 0 | 0 | 0 |
| | N/A | | N/A | 2025 | 0/0 | 0 | 0 | 0 | 0 | 0 | 0 | 0 |
| POINTS | | POINTS | | 2026 | 0/0 | 0 | 0 | 0 | 0 | 0 | 0 | 0 |
| | N/A | | N/A | TOTAL | 2/0 | 0 | 0 | 0 | 0 | 0 | 0 | 1 |
| SHOTS ON GOAL | | SHOTS ON GOAL | | | | | | | | | | |
| | N/A | | N/A | | | | | | | | | |
| GROUND BALLS | | GROUND BALLS | | | | | | | | | | |
| | N/A | | N/A | | | | | | | | | |
| CAUSED TURNOVERS | | CAUSED TURNOVERS | | | | | | | | | | |
| | N/A | | N/A | | | | | | | | | |
| DRAW CONTROLS | | DRAW CONTROLS | | | | | | | | | | |
| 1, at Denver, 3/13/23 | | | N/A | | | | | | | | | |

#12 ERIN HUSSEY | M | FR. | SEVERNA PARK, MD.

| CAREER-HIGHS | | SEASON-HIGHS | | CAREER STATS | | | | | | | | |
|------------------|-----|------------------|-----|--------------|------------|----------|----------|----------|----------|----------|----------|----------|
| GOALS | | GOALS | | YEAR | GP/GS | G | A | PTS | SOG | GB | CT | DC |
| | N/A | | N/A | 2026 | 0/0 | 0 | 0 | 0 | 0 | 0 | 0 | 0 |
| ASSISTS | | ASSISTS | | TOTAL | 0/0 | 0 | 0 | 0 | 0 | 0 | 0 | 0 |
| | N/A | | N/A | | | | | | | | | |
| POINTS | | POINTS | | | | | | | | | | |
| | N/A | | N/A | | | | | | | | | |
| SHOTS ON GOAL | | SHOTS ON GOAL | | | | | | | | | | |
| | N/A | | N/A | | | | | | | | | |
| GROUND BALLS | | GROUND BALLS | | | | | | | | | | |
| | N/A | | N/A | | | | | | | | | |
| CAUSED TURNOVERS | | CAUSED TURNOVERS | | | | | | | | | | |
| | N/A | | N/A | | | | | | | | | |
| DRAW CONTROLS | | DRAW CONTROLS | | | | | | | | | | |
| | N/A | | N/A | | | | | | | | | |

#13 MAGGIE CRAYTOR | A | SO. | CHARLOTTESVILLE, VA.

| CAREER-HIGHS | | SEASON-HIGHS | | CAREER STATS | | | | | | | | |
|---------------------------------|-----|------------------|-----|--------------|------------|----------|----------|----------|-----------|----------|----------|----------|
| GOALS | | GOALS | | YEAR | GP/GS | G | A | PTS | SOG | GB | CT | DC |
| 3, vs. Temple, 2/7/25 | | | N/A | 2025 | 7/0 | 5 | 0 | 5 | 10 | 1 | 1 | 0 |
| ASSISTS | | ASSISTS | | 2026 | 0/0 | 0 | 0 | 0 | 0 | 0 | 0 | 0 |
| | N/A | | N/A | TOTAL | 7/0 | 5 | 0 | 5 | 10 | 1 | 1 | 0 |
| POINTS | | POINTS | | | | | | | | | | |
| 3, vs. Temple, 2/7/25 | | | N/A | | | | | | | | | |
| SHOTS ON GOAL | | SHOTS ON GOAL | | | | | | | | | | |
| 3, 2x, last at Rutgers, 2/15/25 | | | N/A | | | | | | | | | |
| GROUND BALLS | | GROUND BALLS | | | | | | | | | | |
| 1, vs. Temple, 2/7/25 | | | N/A | | | | | | | | | |
| CAUSED TURNOVERS | | CAUSED TURNOVERS | | | | | | | | | | |
| 1, vs. Temple, 2/7/25 | | | N/A | | | | | | | | | |
| DRAW CONTROLS | | DRAW CONTROLS | | | | | | | | | | |
| | N/A | | N/A | | | | | | | | | |

#14 SOPHIA MUSCOLINO | A | JR. | BALDWINVILLE, N.Y.

| CAREER-HIGHS | SEASON-HIGHS |
|---|--------------|
| GOALS 1, 4x, last vs. Stony Brook, 3/23/25 | N/A |
| ASSISTS 1, at Wagner, 3/9/24 | N/A |
| POINTS 2, at Wagner, 3/9/24 | N/A |
| SHOTS ON GOAL 2, vs. Georgetown, 3/8/25 | N/A |
| GROUND BALLS 1, 3x, last at Hofstra, 3/14/25 | N/A |
| CAUSED TURNOVERS N/A | N/A |
| DRAW CONTROLS N/A | N/A |

| CAREER STATS | | | | | | | | |
|--------------|-------------|----------|----------|----------|----------|----------|----------|----------|
| YEAR | GP/GS | G | A | PTS | SOG | GB | CT | DC |
| 2024 | 8/0 | 2 | 1 | 3 | 2 | 2 | 0 | 0 |
| 2025 | 10/0 | 2 | 0 | 2 | 4 | 1 | 0 | 0 |
| 2026 | 0/0 | 0 | 0 | 0 | 0 | 0 | 0 | 0 |
| TOTAL | 18/0 | 4 | 1 | 5 | 6 | 3 | 0 | 0 |

#15 MEG MACMURRAY | A | SO. | CHESTER SPRINGS, PA.

| CAREER-HIGHS | SEASON-HIGHS |
|-------------------------|--------------|
| GOALS N/A | N/A |
| ASSISTS N/A | N/A |
| POINTS N/A | N/A |
| SHOTS ON GOAL N/A | N/A |
| GROUND BALLS N/A | N/A |
| CAUSED TURNOVERS N/A | N/A |
| DRAW CONTROLS N/A | N/A |

| CAREER STATS | | | | | | | | |
|--------------|------------|----------|----------|----------|----------|----------|----------|----------|
| YEAR | GP/GS | G | A | PTS | SOG | GB | CT | DC |
| 2025 * | 0/0 | 0 | 0 | 0 | 0 | 0 | 0 | 0 |
| 2026 | 0/0 | 0 | 0 | 0 | 0 | 0 | 0 | 0 |
| UD | 0/0 | 0 | 0 | 0 | 0 | 0 | 0 | 0 |
| TOTAL | 0/0 | 0 | 0 | 0 | 0 | 0 | 0 | 0 |

* AT MARYLAND

#16 CALLIE DRAB | A | SR. | SUFFERN, N.Y.

| CAREER-HIGHS | SEASON-HIGHS |
|---|--------------|
| GOALS 3, 2x, last vs. Wagner, 3/1/25 | N/A |
| ASSISTS 3, at William & Mary, 3/30/24 | N/A |
| POINTS 5, at UMBC, 3/5/25 | N/A |
| SHOTS ON GOAL 4, 2x, last vs. Georgetown, 3/8/25 | N/A |
| GROUND BALLS 3, 2x, last vs. Wagner, 3/1/25 | N/A |
| CAUSED TURNOVERS 1, 4x, last vs. Wagner, 3/1/25 | N/A |
| DRAW CONTROLS N/A | N/A |

| CAREER STATS | | | | | | | | |
|--------------|-------------|-----------|-----------|-----------|-----------|-----------|----------|----------|
| YEAR | GP/GS | G | A | PTS | SOG | GB | CT | DC |
| 2023 | 3/0 | 1 | 0 | 1 | 2 | 0 | 0 | 0 |
| 2024 | 16/0 | 13 | 9 | 22 | 17 | 7 | 2 | 0 |
| 2025 | 16/8 | 13 | 11 | 24 | 23 | 7 | 2 | 0 |
| 2026 | 0/0 | 0 | 0 | 0 | 0 | 0 | 0 | 0 |
| TOTAL | 16/8 | 27 | 20 | 47 | 42 | 14 | 4 | 0 |

#17 MORGAN GORE | M | SR. | CROFTON, MD.

| CAREER-HIGHS | SEASON-HIGHS |
|---|--------------|
| GOALS 4, vs. Wagner, 3/1/25 | N/A |
| ASSISTS 1, 7x, last vs. Wagner, 3/1/25 | N/A |
| POINTS 5, vs. Wagner, 3/1/25 | N/A |
| SHOTS ON GOAL 5, 2x, last at Towson, 4/13/25 | N/A |
| GROUND BALLS 4, at Monmouth, 3/30/25 | N/A |
| CAUSED TURNOVERS 2, 5x, last at Drexel, 5/1/25 | N/A |
| DRAW CONTROLS 4, 2x, last at Hofstra, 3/14/25 | N/A |

| CAREER STATS | | | | | | | | |
|--------------|--------------|-----------|----------|-----------|-----------|-----------|-----------|-----------|
| YEAR | GP/GS | G | A | PTS | SOG | GB | CT | DC |
| 2023 | 16/1 | 15 | 4 | 19 | 19 | 11 | 2 | 9 |
| 2024 | 16/15 | 17 | 1 | 18 | 29 | 8 | 5 | 14 |
| 2025 | 16/15 | 30 | 2 | 32 | 43 | 20 | 10 | 15 |
| 2026 | 0/0 | 0 | 0 | 0 | 0 | 0 | 0 | 0 |
| TOTAL | 48/31 | 62 | 7 | 69 | 91 | 39 | 17 | 38 |

#18 LENA STOLARICK | D | SO. | HADDONFIELD, N.J.

| CAREER-HIGHS | | SEASON-HIGHS | |
|------------------|---------------------------|------------------|-----|
| GOALS | N/A | GOALS | N/A |
| ASSISTS | N/A | ASSISTS | N/A |
| POINTS | N/A | POINTS | N/A |
| SHOTS ON GOAL | N/A | SHOTS ON GOAL | N/A |
| GROUND BALLS | 4, vs. Princeton, 2/26/25 | GROUND BALLS | N/A |
| CAUSED TURNOVERS | 3, vs. Princeton, 2/26/25 | CAUSED TURNOVERS | N/A |
| DRAW CONTROLS | 2, at Towson, 4/13/25 | DRAW CONTROLS | N/A |

| CAREER STATS | | | | | | | | |
|--------------|-------------|----------|----------|----------|----------|-----------|----------|----------|
| YEAR | GP/GS | G | A | PTS | SOG | GB | CT | DC |
| 2025 | 13/4 | 0 | 0 | 0 | 0 | 10 | 8 | 3 |
| 2026 | 0/0 | 0 | 0 | 0 | 0 | 0 | 0 | 0 |
| TOTAL | 13/4 | 0 | 0 | 0 | 0 | 10 | 8 | 3 |

#19 MAGGIE PORTER | A | FR. | STEVENSON, MD.

| CAREER-HIGHS | | SEASON-HIGHS | |
|------------------|-----|------------------|-----|
| GOALS | N/A | GOALS | N/A |
| ASSISTS | N/A | ASSISTS | N/A |
| POINTS | N/A | POINTS | N/A |
| SHOTS ON GOAL | N/A | SHOTS ON GOAL | N/A |
| GROUND BALLS | N/A | GROUND BALLS | N/A |
| CAUSED TURNOVERS | N/A | CAUSED TURNOVERS | N/A |
| DRAW CONTROLS | N/A | DRAW CONTROLS | N/A |

| CAREER STATS | | | | | | | | |
|--------------|------------|----------|----------|----------|----------|----------|----------|----------|
| YEAR | GP/GS | G | A | PTS | SOG | GB | CT | DC |
| 2026 | 0/0 | 0 | 0 | 0 | 0 | 0 | 0 | 0 |
| TOTAL | 0/0 | 0 | 0 | 0 | 0 | 0 | 0 | 0 |

#20 SAM PARADISE | M | JR. | PERRY HALL, MD.

| CAREER-HIGHS | | SEASON-HIGHS | |
|------------------|------------------------------------|------------------|-----|
| GOALS | 4, vs. Georgetown, 3/8/25 | GOALS | N/A |
| ASSISTS | 2, vs. Temple, 2/7/25 | ASSISTS | N/A |
| POINTS | 4, vs. Georgetown, 3/8/25 | POINTS | N/A |
| SHOTS ON GOAL | 4, 3x, last vs. Georgetown, 3/8/25 | SHOTS ON GOAL | N/A |
| GROUND BALLS | 2, vs. Georgetown, 3/8/25 | GROUND BALLS | N/A |
| CAUSED TURNOVERS | 2, 2x, last vs. Georgetown, 3/8/25 | CAUSED TURNOVERS | N/A |
| DRAW CONTROLS | 9, vs. Temple, 2/7/25 | DRAW CONTROLS | N/A |

| CAREER STATS | | | | | | | | |
|--------------|--------------|-----------|----------|-----------|-----------|-----------|----------|-----------|
| YEAR | GP/GS | G | A | PTS | SOG | GB | CT | DC |
| 2024 | 16/3 | 8 | 0 | 8 | 13 | 6 | 4 | 11 |
| 2025 | 9/9 | 12 | 2 | 14 | 21 | 5 | 4 | 29 |
| 2026 | 0/0 | 0 | 0 | 0 | 0 | 0 | 0 | 0 |
| TOTAL | 25/12 | 20 | 2 | 22 | 34 | 11 | 8 | 40 |

#21 KATE MERCER | D | SR. | KATONAH, N.Y.

| CAREER-HIGHS | | SEASON-HIGHS | |
|------------------|------------------------------------|------------------|-----|
| GOALS | N/A | GOALS | N/A |
| ASSISTS | N/A | ASSISTS | N/A |
| POINTS | N/A | POINTS | N/A |
| SHOTS ON GOAL | N/A | SHOTS ON GOAL | N/A |
| GROUND BALLS | N/A | GROUND BALLS | N/A |
| CAUSED TURNOVERS | N/A | CAUSED TURNOVERS | N/A |
| DRAW CONTROLS | 3, 2x, last vs. Georgetown, 3/8/25 | DRAW CONTROLS | N/A |

| CAREER STATS | | | | | | | | |
|--------------|-------------|----------|----------|----------|----------|----------|----------|----------|
| YEAR | GP/GS | G | A | PTS | SOG | GB | CT | DC |
| 2023 | 2/0 | 0 | 0 | 0 | 0 | 0 | 0 | 0 |
| 2024 | 4/0 | 0 | 0 | 0 | 0 | 0 | 0 | 0 |
| 2025 | 7/0 | 0 | 0 | 0 | 0 | 0 | 0 | 8 |
| 2026 | 0/0 | 0 | 0 | 0 | 0 | 0 | 0 | 0 |
| TOTAL | 13/0 | 0 | 0 | 0 | 0 | 0 | 0 | 8 |

#22 MARY MATEY | D | JR. | PHOENIXVILLE, PA.

| CAREER-HIGHS | | SEASON-HIGHS | | CAREER STATS | | | | | | | | |
|------------------|-----|------------------|-----|--------------|------------|----------|----------|----------|----------|----------|----------|----------|
| GOALS | N/A | GOALS | N/A | YEAR | GP/GS | G | A | PTS | SOG | GB | CT | DC |
| ASSISTS | N/A | ASSISTS | N/A | 2024 | 0/0 | 0 | 0 | 0 | 0 | 0 | 0 | 0 |
| POINTS | N/A | POINTS | N/A | 2025 | 7/1 | 0 | 0 | 0 | 0 | 0 | 1 | 0 |
| SHOTS ON GOAL | N/A | SHOTS ON GOAL | N/A | 2026 | 0/0 | 0 | 0 | 0 | 0 | 0 | 0 | 0 |
| GROUND BALLS | N/A | GROUND BALLS | N/A | TOTAL | 7/1 | 0 | 0 | 0 | 0 | 0 | 1 | 0 |
| CAUSED TURNOVERS | N/A | CAUSED TURNOVERS | N/A | | | | | | | | | |
| DRAW CONTROLS | N/A | DRAW CONTROLS | N/A | | | | | | | | | |

#23 LULU RISHKO | M | SO. | REHOBOTH BEACH, DEL.

| CAREER-HIGHS | | SEASON-HIGHS | | CAREER STATS | | | | | | | | |
|------------------|--------------------------------|------------------|-----|--------------|-------------|----------|----------|-----------|-----------|-----------|----------|----------|
| GOALS | 2, 2x, last at Towson, 4/13/25 | GOALS | N/A | YEAR | GP/GS | G | A | PTS | SOG | GB | CT | DC |
| ASSISTS | 1, 4x, last at Drexel, 5/1/25 | ASSISTS | N/A | 2025 | 14/0 | 7 | 4 | 11 | 10 | 13 | 7 | 0 |
| POINTS | 3, at Towson, 4/13/25 | POINTS | N/A | 2026 | 0/0 | 0 | 0 | 0 | 0 | 0 | 0 | 0 |
| SHOTS ON GOAL | 2, 4x, last at Drexel, 5/1/25 | SHOTS ON GOAL | N/A | TOTAL | 14/0 | 7 | 4 | 11 | 10 | 13 | 7 | 0 |
| GROUND BALLS | 4, at Monmouth, 3/30/25 | GROUND BALLS | N/A | | | | | | | | | |
| CAUSED TURNOVERS | 2, at UMBC, 3/5/25 | CAUSED TURNOVERS | N/A | | | | | | | | | |
| DRAW CONTROLS | N/A | DRAW CONTROLS | N/A | | | | | | | | | |

#24 KYLIE O'BRIEN | D | SO. | BERWYN, PA.

| CAREER-HIGHS | | SEASON-HIGHS | | CAREER STATS | | | | | | | | |
|------------------|-----|------------------|-----|--------------|------------|----------|----------|----------|----------|----------|----------|----------|
| GOALS | N/A | GOALS | N/A | YEAR | GP/GS | G | A | PTS | SOG | GB | CT | DC |
| ASSISTS | N/A | ASSISTS | N/A | 2025 | 0/0 | 0 | 0 | 0 | 0 | 0 | 0 | 0 |
| POINTS | N/A | POINTS | N/A | 2026 | 0/0 | 0 | 0 | 0 | 0 | 0 | 0 | 0 |
| SHOTS ON GOAL | N/A | SHOTS ON GOAL | N/A | TOTAL | 0/0 | 0 | 0 | 0 | 0 | 0 | 0 | 0 |
| GROUND BALLS | N/A | GROUND BALLS | N/A | | | | | | | | | |
| CAUSED TURNOVERS | N/A | CAUSED TURNOVERS | N/A | | | | | | | | | |
| DRAW CONTROLS | N/A | DRAW CONTROLS | N/A | | | | | | | | | |

#25 AMANDA GAZELLE | M | FR. | ODENTON, MD.

| CAREER-HIGHS | | SEASON-HIGHS | | CAREER STATS | | | | | | | | |
|------------------|-----|------------------|-----|--------------|------------|----------|----------|----------|----------|----------|----------|----------|
| GOALS | N/A | GOALS | N/A | YEAR | GP/GS | G | A | PTS | SOG | GB | CT | DC |
| ASSISTS | N/A | ASSISTS | N/A | 2026 | 0/0 | 0 | 0 | 0 | 0 | 0 | 0 | 0 |
| POINTS | N/A | POINTS | N/A | TOTAL | 0/0 | 0 | 0 | 0 | 0 | 0 | 0 | 0 |
| SHOTS ON GOAL | N/A | SHOTS ON GOAL | N/A | | | | | | | | | |
| GROUND BALLS | N/A | GROUND BALLS | N/A | | | | | | | | | |
| CAUSED TURNOVERS | N/A | CAUSED TURNOVERS | N/A | | | | | | | | | |
| DRAW CONTROLS | N/A | DRAW CONTROLS | N/A | | | | | | | | | |

#26 ALISON SWARTOUT | M | SR. | CHARLOTTESVILLE, VA.

| CAREER-HIGHS | SEASON-HIGHS |
|--|-------------------------|
| GOALS 1, vs. Campbell, 4/12/24 | GOALS N/A |
| ASSISTS N/A | ASSISTS N/A |
| POINTS 1, vs. Campbell, 4/12/24 | POINTS N/A |
| SHOTS ON GOAL 1, 3x, last vs. Campbell, 4/12/24 | SHOTS ON GOAL N/A |
| GROUND BALLS 1, 2x, last vs. Monmouth, 4/27/24 | GROUND BALLS N/A |
| CAUSED TURNOVERS N/A | CAUSED TURNOVERS N/A |
| DRAW CONTROLS 1, vs. Kent State, 2/25/24 | DRAW CONTROLS N/A |

| CAREER STATS | | | | | | | | |
|--------------|-------------|----------|----------|----------|----------|----------|----------|----------|
| YEAR | GP/GS | G | A | PTS | SOG | GB | CT | DC |
| 2023 | 2/0 | 0 | 0 | 0 | 0 | 0 | 0 | 0 |
| 2024 | 13/0 | 1 | 0 | 1 | 3 | 2 | 0 | 1 |
| 2025 | 0/0 | 0 | 0 | 0 | 0 | 0 | 0 | 0 |
| 2026 | 0/0 | 0 | 0 | 0 | 0 | 0 | 0 | 0 |
| TOTAL | 15/0 | 1 | 0 | 1 | 3 | 2 | 0 | 1 |

#27 MADDY MOBILIA | D | JR. | NEW ROCHELLE, N.Y.

| CAREER-HIGHS | SEASON-HIGHS |
|--|-------------------------|
| GOALS N/A | GOALS N/A |
| ASSISTS N/A | ASSISTS N/A |
| POINTS N/A | POINTS N/A |
| SHOTS ON GOAL N/A | SHOTS ON GOAL N/A |
| GROUND BALLS 4, 2x, last vs. Georgetown, 3/8/25 | GROUND BALLS N/A |
| CAUSED TURNOVERS 3, vs. Temple, 2/7/25 | CAUSED TURNOVERS N/A |
| DRAW CONTROLS 2, vs. Georgetown, 3/8/25 | DRAW CONTROLS N/A |

| CAREER STATS | | | | | | | | |
|--------------|--------------|----------|----------|----------|----------|-----------|-----------|----------|
| YEAR | GP/GS | G | A | PTS | SOG | GB | CT | DC |
| 2024 | 16/15 | 0 | 0 | 0 | 0 | 12 | 8 | 2 |
| 2025 | 16/16 | 0 | 0 | 0 | 0 | 16 | 16 | 5 |
| 2026 | 0/0 | 0 | 0 | 0 | 0 | 0 | 0 | 0 |
| TOTAL | 32/31 | 0 | 0 | 0 | 0 | 28 | 24 | 7 |

#28 MAGGIE FARRAGHER | D | SR. | EVANSTON, ILL.

| CAREER-HIGHS | SEASON-HIGHS |
|--|-------------------------|
| GOALS N/A | GOALS N/A |
| ASSISTS N/A | ASSISTS N/A |
| POINTS N/A | POINTS N/A |
| SHOTS ON GOAL N/A | SHOTS ON GOAL N/A |
| GROUND BALLS 3, 3x, last at UMBC, 3/5/25 | GROUND BALLS N/A |
| CAUSED TURNOVERS 3, 3x, last at Monmouth, 3/30/25 | CAUSED TURNOVERS N/A |
| DRAW CONTROLS 4, vs. Lafayette, 2/15/23 | DRAW CONTROLS N/A |

| CAREER STATS | | | | | | | | |
|--------------|--------------|----------|----------|----------|----------|-----------|-----------|-----------|
| YEAR | GP/GS | G | A | PTS | SOG | GB | CT | DC |
| 2023 | 11/1 | 0 | 0 | 0 | 0 | 0 | 1 | 12 |
| 2024 | 16/15 | 0 | 0 | 0 | 0 | 12 | 13 | 3 |
| 2025 | 15/15 | 0 | 0 | 0 | 0 | 20 | 13 | 0 |
| 2026 | 0/0 | 0 | 0 | 0 | 0 | 0 | 0 | 0 |
| TOTAL | 42/31 | 0 | 0 | 0 | 0 | 32 | 27 | 15 |

#29 KENNEDY RADZIUL | D | SO. | NORTHPORT, N.Y.

| CAREER-HIGHS | SEASON-HIGHS |
|--|-------------------------|
| GOALS N/A | GOALS N/A |
| ASSISTS N/A | ASSISTS N/A |
| POINTS N/A | POINTS N/A |
| SHOTS ON GOAL N/A | SHOTS ON GOAL N/A |
| GROUND BALLS 4, at Rutgers, 2/15/25 | GROUND BALLS N/A |
| CAUSED TURNOVERS 2, 4x, last at Monmouth, 3/30/25 | CAUSED TURNOVERS N/A |
| DRAW CONTROLS 1, vs. Wagner, 3/1/25 | DRAW CONTROLS N/A |

| CAREER STATS | | | | | | | | |
|--------------|--------------|----------|----------|----------|----------|-----------|-----------|----------|
| YEAR | GP/GS | G | A | PTS | SOG | GB | CT | DC |
| 2025 | 15/11 | 0 | 0 | 0 | 0 | 20 | 12 | 1 |
| 2026 | 0/0 | 0 | 0 | 0 | 0 | 0 | 0 | 0 |
| TOTAL | 15/11 | 0 | 0 | 0 | 0 | 20 | 12 | 1 |

#30 MARINA MERSCH | GK | FR. | MEDIA, PA.

| CAREER-HIGHS | | SEASON-HIGHS | |
|-----------------------|-----|-----------------------|-----|
| FEWEST GOALS ALLOWED^ | N/A | FEWEST GOALS ALLOWED^ | N/A |
| SAVES | N/A | SAVES | N/A |
| SHOTS FACED | N/A | SHOTS FACED | N/A |
| SAVE PERCENTAGE^ | N/A | SAVE PERCENTAGE^ | N/A |

^ MIN. 30 MINUTES PLAYED

| CAREER STATS | | | | | | | |
|--------------|------------|------------|----------|-------------|----------|----------|-------------|
| YEAR | GP/GS | W-L | GA | GAA | SV | SF | SV% |
| 2026 | 0/0 | 0-0 | 0 | 0.00 | 0 | 0 | .000 |
| TOTAL | 0/0 | 0-0 | 0 | 0.00 | 0 | 0 | .000 |

#31 MADDIE GEORGE | GK | SO. | CENTREVILLE, MD.

| CAREER-HIGHS | | SEASON-HIGHS | |
|-----------------------|-----|-----------------------|-----|
| FEWEST GOALS ALLOWED^ | N/A | FEWEST GOALS ALLOWED^ | N/A |
| SAVES | N/A | SAVES | N/A |
| SHOTS FACED | N/A | SHOTS FACED | N/A |
| SAVE PERCENTAGE^ | N/A | SAVE PERCENTAGE^ | N/A |

^ MIN. 30 MINUTES PLAYED

| CAREER STATS | | | | | | | |
|--------------|------------|------------|----------|-------------|----------|----------|-------------|
| YEAR | GP/GS | W-L | GA | GAA | SV | SF | SV% |
| 2025 | 0/0 | 0-0 | 0 | 0.00 | 0 | 0 | .000 |
| 2026 | 0/0 | 0-0 | 0 | 0.00 | 0 | 0 | .000 |
| TOTAL | 0/0 | 0-0 | 0 | 0.00 | 0 | 0 | .000 |

#32 ELLA RISHKO | A | SR. | REHOBOTH BEACH, DEL.

| CAREER-HIGHS | | SEASON-HIGHS | |
|------------------|---|------------------|-----|
| GOALS | 7, 2x, last vs. Pittsburgh, 4/23/23 | GOALS | N/A |
| ASSISTS | 2, 3x, last vs. William & Mary, 4/19/25 | ASSISTS | N/A |
| POINTS | 8, vs. Pittsburgh, 4/23/23 | POINTS | N/A |
| SHOTS ON GOAL | 9, vs. Louisville, 4/8/23 | SHOTS ON GOAL | N/A |
| GROUND BALLS | 4, vs. Pittsburgh, 4/23/23 | GROUND BALLS | N/A |
| CAUSED TURNOVERS | 4, vs. Pittsburgh, 4/23/23 | CAUSED TURNOVERS | N/A |
| DRAW CONTROLS | 15, at Towson, 4/13/25 | DRAW CONTROLS | N/A |

| CAREER STATS | | | | | | | | |
|--------------|--------------|-----------|-----------|------------|------------|-----------|-----------|-----------|
| YEAR | GP/GS | G | A | PTS | SOG | GB | CT | DC |
| 2023 * | 18/16 | 44 | 6 | 50 | 68 | 18 | 12 | 22 |
| 2024 * | 14/8 | 17 | 8 | 25 | 34 | 14 | 7 | 16 |
| 2025 | 16/16 | 36 | 9 | 45 | 65 | 16 | 14 | 55 |
| 2026 | 0/0 | 0 | 0 | 0 | 0 | 0 | 0 | 0 |
| UD | 16/16 | 36 | 9 | 45 | 65 | 16 | 14 | 55 |
| TOTAL | 48/40 | 97 | 23 | 120 | 167 | 48 | 33 | 93 |

* AT VIRGINIA TECH

#33 SYDNEY O'DONNELL | M | SO. | DOWNINGTOWN, PA.

| CAREER-HIGHS | | SEASON-HIGHS | |
|------------------|-----|------------------|-----|
| GOALS | N/A | GOALS | N/A |
| ASSISTS | N/A | ASSISTS | N/A |
| POINTS | N/A | POINTS | N/A |
| SHOTS ON GOAL | N/A | SHOTS ON GOAL | N/A |
| GROUND BALLS | N/A | GROUND BALLS | N/A |
| CAUSED TURNOVERS | N/A | CAUSED TURNOVERS | N/A |
| DRAW CONTROLS | N/A | DRAW CONTROLS | N/A |

| CAREER STATS | | | | | | | | |
|--------------|------------|----------|----------|----------|----------|----------|----------|----------|
| YEAR | GP/GS | G | A | PTS | SOG | GB | CT | DC |
| 2025 | 0/0 | 0 | 0 | 0 | 0 | 0 | 0 | 0 |
| 2026 | 0/0 | 0 | 0 | 0 | 0 | 0 | 0 | 0 |
| TOTAL | 0/0 | 0 | 0 | 0 | 0 | 0 | 0 | 0 |

#34 RILEY STURTEVANT | M | SR. | SPRINGFIELD, VA.

| CAREER-HIGHS | SEASON-HIGHS |
|--|-------------------------|
| GOALS 2x, 4x, last at Drexel, 5/1/25 | GOALS N/A |
| ASSISTS 1, 2x, last vs. Elon, 4/4/25 | ASSISTS N/A |
| POINTS 1, 4x, last at Drexel, 5/1/25 | POINTS N/A |
| SHOTS ON GOAL 3, 3x, last at Drexel, 5/1/25 | SHOTS ON GOAL N/A |
| GROUND BALLS 3, vs. Temple, 2/7/25 | GROUND BALLS N/A |
| CAUSED TURNOVERS 1, 6x, last at Campbell, 4/11/25 | CAUSED TURNOVERS N/A |
| DRAW CONTROLS N/A | DRAW CONTROLS N/A |

| CAREER STATS | | | | | | | | |
|--------------|-------------|-----------|----------|-----------|-----------|-----------|----------|----------|
| YEAR | GP/GS | G | A | PTS | SOG | GB | CT | DC |
| 2023 | 0/0 | 0 | 0 | 0 | 0 | 0 | 0 | 0 |
| 2024 | 8/0 | 2 | 0 | 2 | 4 | 2 | 0 | 0 |
| 2025 | 16/9 | 13 | 2 | 15 | 19 | 11 | 6 | 0 |
| 2026 | 0/0 | 0 | 0 | 0 | 0 | 0 | 0 | 0 |
| TOTAL | 24/9 | 15 | 2 | 17 | 23 | 13 | 6 | 0 |

#35 NICHELLE DESBORDES | D | SO. | ELLICOTT CITY, MD.

| CAREER-HIGHS | SEASON-HIGHS |
|-------------------------|-------------------------|
| GOALS N/A | GOALS N/A |
| ASSISTS N/A | ASSISTS N/A |
| POINTS N/A | POINTS N/A |
| SHOTS ON GOAL N/A | SHOTS ON GOAL N/A |
| GROUND BALLS N/A | GROUND BALLS N/A |
| CAUSED TURNOVERS N/A | CAUSED TURNOVERS N/A |
| DRAW CONTROLS N/A | DRAW CONTROLS N/A |

| CAREER STATS | | | | | | | | |
|--------------|------------|----------|----------|----------|----------|----------|----------|----------|
| YEAR | GP/GS | G | A | PTS | SOG | GB | CT | DC |
| 2025 | 0/0 | 0 | 0 | 0 | 0 | 0 | 0 | 0 |
| 2026 | 0/0 | 0 | 0 | 0 | 0 | 0 | 0 | 0 |
| TOTAL | 0/0 | 0 | 0 | 0 | 0 | 0 | 0 | 0 |

#37 MIA DIDIO | D | SR. | WESTPORT, CONN.

| CAREER-HIGHS | SEASON-HIGHS |
|-------------------------|-------------------------|
| GOALS N/A | GOALS N/A |
| ASSISTS N/A | ASSISTS N/A |
| POINTS N/A | POINTS N/A |
| SHOTS ON GOAL N/A | SHOTS ON GOAL N/A |
| GROUND BALLS N/A | GROUND BALLS N/A |
| CAUSED TURNOVERS N/A | CAUSED TURNOVERS N/A |
| DRAW CONTROLS N/A | DRAW CONTROLS N/A |

| CAREER STATS | | | | | | | | |
|--------------|------------|----------|----------|----------|----------|----------|----------|----------|
| YEAR | GP/GS | G | A | PTS | SOG | GB | CT | DC |
| 2023 | 1/0 | 0 | 0 | 0 | 0 | 0 | 0 | 0 |
| 2024 | 0/0 | 0 | 0 | 0 | 0 | 0 | 0 | 0 |
| 2025 | 0/0 | 0 | 0 | 0 | 0 | 0 | 0 | 0 |
| 2026 | 0/0 | 0 | 0 | 0 | 0 | 0 | 0 | 0 |
| TOTAL | 1/0 | 0 | 0 | 0 | 0 | 0 | 0 | 0 |

#38 SADIE SCHULTZ | M | FR. | RIVERHEAD, N.Y.

| CAREER-HIGHS | SEASON-HIGHS |
|-------------------------|-------------------------|
| GOALS N/A | GOALS N/A |
| ASSISTS N/A | ASSISTS N/A |
| POINTS N/A | POINTS N/A |
| SHOTS ON GOAL N/A | SHOTS ON GOAL N/A |
| GROUND BALLS N/A | GROUND BALLS N/A |
| CAUSED TURNOVERS N/A | CAUSED TURNOVERS N/A |
| DRAW CONTROLS N/A | DRAW CONTROLS N/A |

| CAREER STATS | | | | | | | | |
|--------------|------------|----------|----------|----------|----------|----------|----------|----------|
| YEAR | GP/GS | G | A | PTS | SOG | GB | CT | DC |
| 2026 | 0/0 | 0 | 0 | 0 | 0 | 0 | 0 | 0 |
| TOTAL | 0/0 | 0 | 0 | 0 | 0 | 0 | 0 | 0 |

#40 STEPH MARSZAL | GK | SR. | CATONSVILLE, MD.

| CAREER-HIGHS | SEASON-HIGHS |
|--|------------------------------|
| FEWEST GOALS ALLOWED^ 1, vs. Lafayette, 3/6/24 | FEWEST GOALS ALLOWED^ N/A |
| SAVES 14, at Lehigh, 2/9/24 | SAVES N/A |
| SHOTS FACED 35 vs. Princeton, 2/26/25 | SHOTS FACED N/A |
| SAVE PERCENTAGE^ .667, 4x, last at Wagner, 3/9/24 | SAVE PERCENTAGE^ N/A |

^ MIN. 30 MINUTES PLAYED

| CAREER STATS | | | | | | | |
|--------------|--------------|--------------|------------|--------------|------------|------------|-------------|
| YEAR | GP/GS | W-L | GA | GAA | SV | SF | SV% |
| 2023 | 0/0 | 0-0 | 0 | 0.00 | 0 | 0 | .000 |
| 2024 | 13/12 | 7-5 | 97 | 10.12 | 93 | 253 | .489 |
| 2025 | 14/13 | 8-5 | 154 | 11.65 | 106 | 363 | .408 |
| 2026 | 0/0 | 0-0 | 0 | 0.00 | 0 | 0 | .000 |
| TOTAL | 27/25 | 15-10 | 251 | 11.01 | 199 | 616 | .442 |

#41 MOLLY BAUMGRATZ | M | JR. | CHARLOTTE, N.C.

| CAREER-HIGHS | SEASON-HIGHS |
|--|-------------------------|
| GOALS N/A | GOALS N/A |
| ASSISTS N/A | ASSISTS N/A |
| POINTS N/A | POINTS N/A |
| SHOTS ON GOAL N/A | SHOTS ON GOAL N/A |
| GROUND BALLS N/A | GROUND BALLS N/A |
| CAUSED TURNOVERS N/A | CAUSED TURNOVERS N/A |
| DRAW CONTROLS 4, at Campbell, 4/11/25 | DRAW CONTROLS N/A |

| CAREER STATS | | | | | | | | |
|--------------|-------------|----------|----------|----------|----------|----------|----------|-----------|
| YEAR | GP/GS | G | A | PTS | SOG | GB | CT | DC |
| 2024 | 0/0 | 0 | 0 | 0 | 0 | 0 | 0 | 0 |
| 2025 | 12/5 | 0 | 0 | 0 | 0 | 0 | 0 | 14 |
| 2026 | 0/0 | 0 | 0 | 0 | 0 | 0 | 0 | 0 |
| TOTAL | 12/5 | 0 | 0 | 0 | 0 | 0 | 0 | 14 |

#42 ELLIE DASSOULAS | A | SR. | TOWSON, MD.

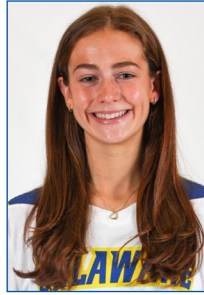
| CAREER-HIGHS | SEASON-HIGHS |
|-------------------------|-------------------------|
| GOALS N/A | GOALS N/A |
| ASSISTS N/A | ASSISTS N/A |
| POINTS N/A | POINTS N/A |
| SHOTS ON GOAL N/A | SHOTS ON GOAL N/A |
| GROUND BALLS N/A | GROUND BALLS N/A |
| CAUSED TURNOVERS N/A | CAUSED TURNOVERS N/A |
| DRAW CONTROLS N/A | DRAW CONTROLS N/A |

| CAREER STATS | | | | | | | | |
|--------------|------------|----------|----------|----------|----------|----------|----------|----------|
| YEAR | GP/GS | G | A | PTS | SOG | GB | CT | DC |
| 2023 | 0/0 | 0 | 0 | 0 | 0 | 0 | 0 | 0 |
| 2024 | 0/0 | 0 | 0 | 0 | 0 | 0 | 0 | 0 |
| 2025 | 0/0 | 0 | 0 | 0 | 0 | 0 | 0 | 0 |
| 2026 | 0/0 | 0 | 0 | 0 | 0 | 0 | 0 | 0 |
| TOTAL | 0/0 | 0 | 0 | 0 | 0 | 0 | 0 | 0 |

DELAWARE TV/RADIO CHART



1
Stella Stolarick
Sophomore | A
Haddonfield, N.J.
Haddonfield Memorial



2
Grayson Buono
Sophomore | A
Wayne, Pa.
Radnor



3
Lara Hoeffich
Sophomore | D
Glenelg, Md.
Glenelg High School



4
Marin Mooney
Freshman | A
Villanova, Pa.
Radnor



6
Jenny Green
Freshman | D
Garnet Valley, Pa.
Garnet Valley



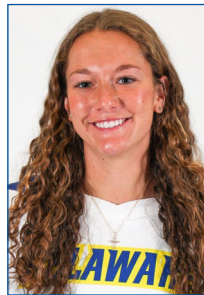
7
Julia Ciuffo
Junior | M
Reisterstown, Md.
Roland Park Country



8
Jaclyn Marszal
Senior | A
Catonsville, Md.
Glenelg Country School (Notre Dame)



9
Kat Baseggio
Junior | D
Guilford, Conn.
Guilford



10
McKenzie Dido
Senior | A
Westport, Conn.
Staples



11
Julia Reagan
Senior | M
East Atlantic Beach, N.Y.
Sacred Heart Academy



12
Erin Hussey
Freshman | M
Severna Park, Md.
Severna Park



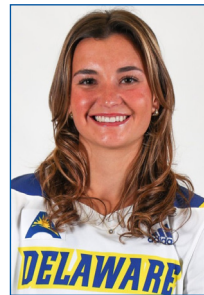
13
Maggie Crayro
Sophomore | A
Charlottesville, Va.
Western Albemarle



14
Sophia Muscolino
Junior | A
Baldwinsville, N.Y.
Charles W. Baker



15
Meg MacMurray
Sophomore | A
Chester Springs, Pa.
The Hill School (Maryland)



16
Callie Drab
Senior | A
Suffern, N.Y.
Suffern



17
Morgan Gore
Senior | M
Crofton, Md.
Arundel



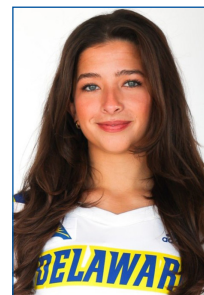
18
Lena Stolarick
Sophomore | D
Haddonfield, N.J.
Haddonfield Memorial



19
Maggie Porter
Freshman | A
Stevenson, Md.
St. Paul's School for Girls (Penn State)



20
Sam Paradise
Junior | M
Perry Hall, Md.
Maryvale Preparatory



21
Kate Mercer
Senior | D
Katonah, N.Y.
John Jay



22
Mary Matey
Junior | D
Phoenixville, Pa.
Archbishop John Carroll



23
Lulu Rishko
Sophomore | M
Rehoboth Beach, Del.
Cape Henlopen



24
Kylie O'Brien
Sophomore | D
Berwyn, Pa.
Academy of Notre Dame



25
Amanda Gazelle
Freshman | M
Odenton, Md.
Archbishop Spalding

DELAWARE TV/RADIO CHART



26
Alison Swartout
Senior | M
Charlottesville, Va.
Monticello



27
Maddy Mobilia
Junior | D
New Rochelle, N.Y.
The Ursuline School



28
Maggie Farragher
Senior | D
Evanston, Ill.
Evanston Township



29
Kennedy Radziul
Sophomore | D
Northport, N.Y.
Northport



30
Marina Mersch
Freshman | GK
Media, Pa.
Cardinal O'Hara



31
Maddie George
Sophomore | GK
Centreville, Md.
Queen Anne's County



32
Ella Rishko
Senior | A
Rehoboth Beach, Del.
Cape Henlopen (Virginia Tech)



33
Sydney O'Donnell
Sophomore | M
Downingtown, Pa.
Downingtown West



34
Riley Sturtevant
Senior | M
Springfield, Va.
West Springfield



35
Nichelle Desbordes
Sophomore | D
Ellicott City, Md.
Glenelg Country School



37
Mia Didio
Senior | D
Westport, Conn.
Staples



38
Sadie Schultz
Freshman | M
Riverhead, N.Y.
Riverhead



40
Steph Marszal
Senior | GK
Catonsville, Md.
Glenelg Country School



41
Molly Baumgratz
Junior | M
Charlotte, N.C.
Charlotte Catholic



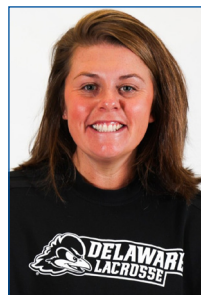
42
Ellie Dassoulas
Senior | A
Towson, Md.
Roland Park Country



Head Coach
Amy Altig
7th season



Assoc. Head Coach
Kara Nakrasius
4th season



Assoc. Head Coach
Sam Pratt
2nd season



Assistant Coach
Lilly Siskind
2nd season