



DELAWARE FIGHTIN' BLUE HENS

WOMEN'S LACROSSE GAME NOTES

a new era.



Brendan Thomas, Director, Communications & Creative Services | 207-400-2840 | brendant@udel.edu

SERIES HISTORY

All Time.....	17-16
Altig vs.....	0-3
Streak.....	L5
At Home.....	11-6
On the Road.....	5-10
Neutral.....	1-0
Largest Win.....	21-3, 4/3/84
Largest Loss.....	16-8, 2/12/22
Last Win.....	17-5, 2/25/17
Last Loss.....	13-9, 2/15/25

HOW TO FOLLOW

Stream..... ESPN+
Play-by-Play..... Matt Popelka

X/Instagram..... @DelawareWLAX
Live Stats..... bluehenstats.STATB.US
Tickets..... bluehens.com/WLAXtickets

GAME PROMOTIONS

Friday..... "Back in Black" Black Out
..... Black Sweatshirt Raffle

WHO ARE WE

Only refer to our institution as the **University of Delaware** or **UD**. Do not use "U of D," "UofD," "the U of D" or "UDel." Do not use periods in "UD." We are based in Newark (new-ARK), Delaware.

We are the Fightin' Blue Hens on first reference and Blue Hens, Hens, or Blue & Gold after that.

MEDIA RELATIONS

For interview requests for women's lacrosse student-athletes or coaches, please contact Brendan Thomas, Director, Communications & Creative Services.

Email..... brendant@udel.edu
Cell..... 207-400-2840

DELAWARE (0-1)

GM
2

RUTGERS (0-1)



Head Coach: Amy Altig
Record at UD: 36-41 (7th season)
Career Record: same
Last: Lost, 12-10 at Temple



Head Coach: Melissa Lehman
Record at RU: 52-38 (7th season)
Career Record: same
Last: Lost, 19-14 vs. #21 Army

friday, february 13 | 5 p.m. | newark, de. | delaware stadium (18,077) | espn+

OPENING DRAW

The University of Delaware women's lacrosse program plays its first home game of the 2026 campaign when it hosts Rutgers on Friday night at Delaware Stadium. The Fightin' Blue Hens are beginning their first season as members of the Atlantic Sun Conference (ASUN).

Delaware fell in its season opener last Friday, dropping a 12-10 decision at Temple. **Morgan Gore** and **Ella Rishko** each had a hat trick, and Rishko stuffed the stat sheet with nine draw controls, three ground balls and a caused turnover. **Grayson Buono** and **Maggie Porter** each scored their first collegiate goals and had their first multi-point games. **Kennedy Radziul** led the defense with three ground balls and a career-high three caused turnovers.

Against the Owls, several Blue Hens reached career milestones. **Ella Rishko** reached 100-career goals scored, 100-career draw controls and 50-career ground balls. **Jaclyn Marszal** had two assists to surpass 100-career points and **Steph Marszal** reached 200-career saves with her first save of the game.

Delaware and Rutgers have met 33 times previously, with the Blue Hens holding a 17-16 advantage in the all-time series. The Scarlet Knights have won each of the past five meetings, but UD holds an 11-6 record when the two teams meet in Newark.

Last season, the two longtime foes met in New Jersey with Rutgers coming away with a 13-9 win. Delaware held a 6-4 lead at the midway point. **Delaney McDaniel** led the offense with a goal and three assists, while **Morgan Gore** and **Sam Paradise** each had two goals. **Kennedy Radziul** had a career-high four ground balls, and **Ella Rishko** and **Erin Gormley** each scooped up three ground balls. **Steph Marszal** made 10 saves in goal.

HEN LEADERS



gore / e. rishko

goals
3 goals



j. marszal / drab

assists
2 assists



drab / gore / e. rishko

points
3 points



ella rishko

draws
9 draw controls



radziul / e rishko

ground balls
3 ground balls



steph marszal

saves
5 saves

2026 SCHEDULE

KEY H A N

 feb. 6 Philadelphia, Pa. L, 12-10	 feb. 13 Newark, Del. 5 p.m. ESPN+	 feb. 18 Newark, Del. 3 p.m. ESPN+	 march 4 Newark, Del. 3 p.m. ESPN+	 march 7 Washington, D.C. Noon ESPN+	 march 11 Philadelphia, Pa. 3 p.m. FloSports	 march 14 Newark, Del. Noon ESPN+	 march 19 Clarksville, Tenn. 1 p.m. ESPN+
 march 21 St. Charles, Mo. 1 p.m. ESPN+	 march 26 Newark, Del. Noon ESPN+	 march 28 Newark, Del. Noon ESPN+	 april 1 Newark, Del. 4 p.m. ESPN+	 april 9 Newark, Del. Noon ESPN+	 april 11 Newark, Del. Noon ESPN+	 april 16 Charlotte, N.C. Noon ESPN+	 april 22 Lynchburg, Va. 2 p.m. ESPN+

* all times ET

A NEW ERA

After a nearly 18-month wait, the new era is finally here and the University of Delaware Fightin' Blue Hens are officially full members of Conference USA as of July 1, 2025. Fourteen of UD's 22 varsity programs will be housed in CUSA, with eight others joining as affiliate members in the Atlantic Sun (women's lacrosse, men's and women's swimming & diving), Atlantic 10 (men's lacrosse), Mid-American Conference (rowing), The Summit League (men's soccer), Atlantic Hockey America (ice hockey), and Mountain Pacific Sports Federation (field hockey).

An athletic department built on history and tradition, Delaware brings an abundance of success to CUSA having won 10 national championships, 172 team conference titles, 282 individual conference crowns, 342 major conference awards, 2,655 all-league selections, and 543 all-americans.

UD student-athletes complement their athletic success with strong academic performances. During the 2024-25 academic year, the Blue Hens compiled a cumulative 3.41 grade-point average—the highest in department history, excluding academic terms impacted by COVID-19. This marked the 11th-consecutive year and the 23rd-straight semester in which UD student-athletes have posted a 3.00 GPA or better.

The move will push the Delaware brand across the nation, spanning from the northeast down into Florida, and west as far as New Mexico. However, the reach won't stop there. At least five football games will hit the national scene on CBS Sports Network/ESPN family of networks, including a non-conference tilt on FOX against Colorado. Men's and women's basketball will also have the chance to play nationally televised games as part of CUSA's media rights agreement with CBS Sports Network and ESPN.

Speaking of reach, Delaware's initial announcements about joining Conference USA reached over two billion people according to social media analytics. Put that into perspective – just over one million people live in the state of Delaware. That means these announcements reached over 2,000 Delawares.



CUSA SPONSORED DELAWARE SPORTS		OTHER DELAWARE SPORTS AFFILIATIONS	
- Baseball	- W Soccer	- Field Hockey	MPSF - W Rowing
- M/W Basketball	- Softball	- Ice Hockey	Atlantic Hockey America - M Soccer
- W Cross Country/Track & Field	- M/W Tennis	- M Lacrosse	Atlantic 10 - M/W Swim/Dive
- Football	- Volleyball	- W Lacrosse	Atlantic Sun
- M/W Golf			Mid-American The Summit League Atlantic Sun

QUICK FACTS

School.....	University of Delaware
Location.....	Newark, Del.
Founded.....	1743
Enrollment.....	24,039
President.....	Laura Carlson
School Website.....	www.udel.edu
Nickname.....	Fightin' Blue Hens
School Colors.....	Blue & Gold
Athletics Website.....	www.bluehens.com
Director of Athletics.....	Jordan Skolnick
Conference.....	Atlantic Sun
Website.....	www.asunsports.org

WOMEN'S LACROSSE PROGRAM

Facility.....	Delaware Stadium
Capacity.....	18,077
First Season of Women's Lacrosse.....	1978
All-Time Record.....	428-355-1
All-Time Delaware Stadium Record.....	64-53
National Championships.....	3
Conference Championships.....	6
Head Coach.....	Amy Altig (James Madison '05)
Career Record.....	36-41 / 7th season
Record at UD.....	same
Letterwinners Returning/Lost.....	31/10
Starters Returning/Lost.....	10/2
Newcomers.....	8
2025 Overall Record.....	10-6
2025 CAA Record.....	6-2
2025 CAA Finish.....	3rd
2025 Postseason.....	CAA Semifinals

TABLE OF CONTENTS

A New Era.....	2
Storylines.....	3-6
Program information.....	3
Statistical comparison.....	3
What to look for.....	3
Delaware record when.....	4
Statistical superlatives.....	5
ASUN standings/awards.....	5
Altig record vs. opponents.....	6
Milestone watch.....	6
Roster.....	7
Head coach Amy Altig.....	8
Assistant coaches & support staff.....	9
University of Delaware.....	10
Starters & stat leaders.....	11
Highs & lows.....	12-13
Season stats.....	14
NCAA Rankings.....	15-16
Player Pages.....	17-26
TV Roster.....	27-28

WHAT TO LOOK FOR...

- A win on Friday would be Delaware's first victory over a Big 10 opponent since March 27, 2019 when UD defeated Oregon, 18-8, at Delaware Stadium.
- The Blue Hens are 4-2 in home openers under head coach Amy Altig, including wins in the last two.
- Senior attacker **Jaclyn Marszal** needs one more point for 100 points at Delaware. She currently has 101 career points, including two goals as a freshman at Notre Dame.

200 club

In Delaware's season opener against Temple, senior goalkeeper **Steph Marszal** became the 17th Blue Hen to reach the 200-career save mark. She is the first UD goalie to reach the mark since **Mercy McCarthy** (2019-23).

night hens

Delaware is 2-2 in night games (starting at 5 p.m. or later) under head coach Amy Altig. The Blue Hens won road games at Temple (2023) and Hofstra (2025) while falling at then-No. 4 Maryland (2022) and at home to Drexel (2025).

high school reunion

Delaware senior twins **Jaclyn** and **Steph Marszal** hail from the same hometown as Rutgers junior Cate O'Ferrall (Catonsville, Md.). The three of them, as well as UD sophomore **Nichelle Desbordes** were all high school teammates at Glenelg Country School

keep the winning coming

Delaware is looking to build off of back-to-back 10-win seasons. It is the first time the program has had consecutive winning seasons since 2016-17 and the first time it has won at least 10 games in consecutive years since 2015-16.

runnin' it back

The Blue Hens return 10-of-12 starters from the 2025 season after the graduation of All-CAA Second Team selections Delaney McDaniel and Erin Gormley. Overall, UD returns 31 players who were on last season's roster, including 21 who saw action in at least one game and 13 who appeared in at least 12 games.

returning offensive firepower

Delaware returns three of its top-five scorers. **Jaclyn Marszal** ranked second on the team with 50 points (21g, 29a), while **Ella Rishko** had a team-leading 36 goals and 45 points, and **Morgan Gore** (30g, 2a) rounded out the top five. Overall, the Blue Hens bring back 67% of its goal-scoring production from last season

defensive dawgs

The Blue & Gold ranked eighth in the country in 2025 with 11.19 caused turnovers per game. The Hens bring back starters **Kat Baseggio** (23 CT, 29 GB), **Maggie Farragher** (13 CT, 20 GB), and **Kennedy Radziul** (12 CT, 20 GB). Overall, UD returns 69% of its caused turnover production from 2025.

newcomers

The Blue Hens welcome eight newcomers to the roster in 2026. The group includes seven freshmen - **Amanda Gazelle**, **Jenny Green**, **Erin Hussey**, **Marin Mooney**, **Marina Mersch**, **Maggie Porter** and **Sadie Schultz** - who will all look to make their collegiate debuts in 2026. Porter transferred to Delaware after spending the fall at Penn State. Additionally, sophomore transfer **Meg MacMurray** joined the Hens after a year at Maryland.

roster breakdown

The 2026 Delaware roster features 39 players hailing from nine different states. Sisters **Ella** and **Lulu Rishko** are the only two Delawareans on the roster, while senior captain **Maggie Farragher** (Illinois) is the farthest from home. Maryland (12), Pennsylvania (8) and New York (7) are the three most represented states.

asun a good fit

While 2026 will be the Blue Hens' first season in the ASUN, their 2025 numbers suggest the program will fit right in. Delaware finished 34th in the final 2025 RPI rankings, which would have been at the top of the conference, with Liberty second at 39th. Statistically, Delaware would have ranked first in the conference in free position percentage (.545), second in scoring defense (11.63), and third in caused turnovers per game (11.19), assists per game (6.25) and turnovers per game (14.63).

STATISTICAL COMPARISON

Category	DEL	NCAA	ASUN	RU	NCAA	B1G
Assists Per Game	6.00	28th	3rd	10.00	6th	2nd
Caused TO Per Game	8.00	41st	4th	5.00	66th	8th
Clearing Percentage	.824	61st	5th	.917	30th	3rd
Draw Control Percentage	.667	14th	2nd	.571	30th	2nd
Draw Controls Per Game	16.00	17th	3rd	20.00	3rd	1st
Free Position Percentage	.400	44th	3rd	--	--	--
Ground Balls Per Game	14.00	42nd	5th	12.00	57th	6th
Save Percentage	.294	77th	6th	.345	63rd	8th
Scoring Defense	12.00	49th	3rd	19.00	84th	9th
Scoring Margin	--	--	--	--	--	--
Scoring Offense	10.00	48th	5th	14.00	20th	4th
Shot Percentage	.345	64th	5th	.452	32nd	4th
Shots Per Game	29.00	39th	5th	31.00	31st	4th
Shots On Goal Per Game	19.00	43rd	5th	20.00	39th	4th
Turnovers Per Game	22.00	83rd	7th	10.00	12th	1th

oh captain, my captains

Delaware will be led by a trio of senior captains in 2026 as **Maggie Farragher, Morgan Gore,** and **Ella Rishko** were all selected to lead the squad. Farragher and Gore are both second-time selections after serving as captains in 2025, while Rishko is a first-time captain in her second season as a Blue Hen following her transfer from Virginia Tech.

get the lead, hold the lead

The Blue Hens have been very good in recent years in holding a second-half lead. In 2025, the squad went 10-1 when leading at halftime and 9-0 when having the advantage after three quarters. Similarly, Delaware was 8-0 in 2024 when up at the midway point and 10-0 when leading after three quarters.

it starts at the draw

The Blue Hens went 7-0 in 2025 when winning more draws than their opponents. **Ella Rishko** set the program single-game record with 15 draw controls at Towson (April 13).

magic number is 10

Since **Amy Altig** became head coach prior to the 2020 season, the Blue Hens are 22-2 when holding opponents under 10 goals. On the flipside, Delaware is 34-17 when the offense scores 10 or more goals.

caa postseason honors

Delaware returns three of its five All-CAA selections from a season ago. Senior **Morgan Gore** was an All-CAA Second Team pick in 2025, earning her second-career postseason nod, and sophomores **Lulu Rishko** and **Kennedy Radziul** were both selected to the CAA All-Rookie Team.

puerto rico

Senior twins **McKenzie** and **Mia Didio** both represented Puerto Rico at the 2024 World Lacrosse Women's U20 Championship in Hong Kong, China. Their maternal grandmother is a native of Puerto Rico and the two earned spots on the Puerto Rico U20 National Team through a tryout.

Puerto Rico finished fifth overall with a 6-2 record, going 3-1 in pool play and winning two consolation playoff games. McKenzie finished sixth on the team in scoring with eight goals and two assists. Mia, unfortunately, missed the tournament due to injury.

altig here for the long haul

In July, Delaware and head coach **Amy Altig** agreed upon a contract extension that will keep her at the helm of the women's lacrosse program through the 2030 season. Altig was named the seventh head coach in program history in June 2019 and has led Delaware to a 36-40 record through her first six seasons, including back-to-back 10-win campaigns in 2023-24. UD won six CAA games in 2025, the program's most league wins since 1999 when the Blue Hens went 6-0 in America East play.

there's something in the gene pool

The Blue Hens had two pairs of sisters on the team who are both two-thirds of a set of triplets. Seniors **Jaelyn** and **Steph Marszal** have a third sister, Jamie, who is a senior at Loyola Maryland. Sophomores **Lena** and **Stella Stolarick** also have a third sister who is on the Holy Cross track & field team.

The genetic trait of twins runs strong on the Blue Hens' roster. Seniors **McKenzie** and **Mia Didio** have spent their entire careers at UD, while junior **Molly Baumgratz** has a twin sister - Ellie - who attends the University of Tennessee. Freshman **Marina Mersch** has a twin sister - Chiara - who is also a freshman at Delaware.

While not twins, **Ella** and **Lulu Rishko** make up a fourth set of sisters on the 2026 roster. Additionally, junior **Mary Matey** has an older sister, **Kellie Ann**, who played defense for the Blue Hens from 2021-24. The two overlapped on the roster during the 2024 season.

nakrasius promoted

Back in June, head coach **Amy Altig** announced the promotion of **Kara Nakrasius** to associate head coach. Nakrasius joined the UD program in August 2022 and has spent the past three seasons overseeing UD's efforts on defense and at the draw. In 2025, the Blue Hens ranked eighth nationally in caused turnovers per game (11.19) after ranking ninth in 2024 (10.44). Delaware has set eight program records on defense and at the draw in three seasons under Nakrasius.

Nakrasius Records

- Team single-game CT (26)
- Team single-game GB (33)
- Team single-game DC (26)
- Team single-season DC (240)
- Individual single-game CT (Hranicka, 11)
- Individual single-season CT (Hranicka, 50)
- Individual single-game DC (Rishko, 15)
- Individual career DC (Livornese, 223)

DELAWARE RECORD WHEN...

	2026	ALTIG
Overall	0-1	36-41
Conference	0-0	16-14
Non-conference	0-1	20-27
Home	0-0	20-18
Away	0-1	16-19
Neutral	0-0	0-4
Current streak	L1	L2
Current home streak	--	W2
Current road streak	L1	L1
Current neutral streak	--	L5
vs. ranked opponent	0-0	1-12
Day game	0-1	34-39
Night game (5 p.m. or later)	0-0	2-2
February	0-1	11-12
March	0-0	14-18
April	0-0	11-8
May	0-0	0-3
Scoring first	0-1	21-18
Opponent scores first	0-0	15-23
Scoring 0-4 goals	0-0	0-6
Scoring 5-9 goals	0-0	2-18
Scoring 10-14 goals	0-1	19-16
Scoring 15-19 goals	0-0	14-1
Scoring 20+ goals	0-0	1-0
Allowing 0-4 goals	0-0	4-0
Allowing 5-9 goals	0-0	18-2
Allowing 10-14 goals	0-1	13-20
Allowing 15-19 goals	0-0	1-16
Allowing 20+ goals	0-0	0-3
Leading after 1st	0-1	19-7
Trailing after 1st	0-0	8-21
Tied after 1st	0-0	7-5
Leading at halftime	0-1	26-5
Trailing at halftime	0-0	7-32
Tied at halftime	0-0	3-4
Leading after 3rd	0-1	27-6
Trailing after 3rd	0-0	3-26
Tied after 3rd	0-0	4-1
Overtime	0-0	1-3
Delaware has more GBs	0-0	24-12
Opponent has more GBs	0-1	10-27
GBs are even	0-0	2-2
Delaware wins more draws	0-1	26-9
Opponent wins more draws	0-0	10-29
Draws are even	0-0	0-3
Delaware clear attempts ≥ 85%	0-0	25-21
Delaware clear attempts < 85%	0-1	11-20
Opponent clear attempts ≥ 85%	0-1	17-31
Opponent clear attempts < 85%	0-0	19-10

ON THIS DATE IN DELAWARE WLAX HISTORY...

FEB

13

Delaware has never played a game on February 13.

The Blue Hens are 8-2 all-time in games played on Valentine's Day or earlier.

ACTIVE POINTS LEADERS

Name	Yr.	G	A	P
Ella Rishko	Sr.	100	23	123
Jaclyn Marszal	Sr.	48	53	101
Morgan Gore	Sr.	65	7	72
Callie Drab	Sr.	28	22	50
Sam Paradise	Jr.	20	2	22
Riley Sturtevant	Sr.	16	2	18
McKenzie Didio	Sr.	15	0	15
Lulu Rishko	So.	7	4	11
Maggie Craytor	So.	5	0	5
Sophia Muscolino	So.	4	1	5
Grayson Buono	So.	1	1	2
Maggie Porter	Fr.	1	1	2
Alison Swartout	Sr.	1	0	1
Julia Ciufo	Jr.	1	0	1
Kat Baseggio	Jr.	0	0	0
Molly Baumgratz	Jr.	0	0	0
Ellie Dassoulas	Sr.	0	0	0
Nichelle Desbordes	So.	0	0	0
Mia Didio	Sr.	0	0	0
Maggie Farragher	Sr.	0	0	0
Amanda Gazelle	Fr.	0	0	0
Jenny Green	Fr.	0	0	0
Lara Hoeflich	So.	0	0	0
Erin Hussey	Fr.	0	0	0
Meg MacMurray	So.	0	0	0
Mary Matey	Jr.	0	0	0
Kate Mercer	Sr.	0	0	0
Maddy Mobilia	Jr.	0	0	0
Marin Mooney	Fr.	0	0	0
Kylie O'Brien	So.	0	0	0
Sydney O'Donnell	So.	0	0	0
Kennedy Radziul	So.	0	0	0
Julia Reagan	Sr.	0	0	0
Sadie Schultz	Fr.	0	0	0
Lena Stolarick	So.	0	0	0
Stella Stolarick	So.	0	0	0

HAT TRICKS

Name	2026	Career
Ella Rishko	1	16
Morgan Gore	1	7
Jaclyn Marszal	0	6
Callie Drab	0	2
Sam Paradise	0	2
Maggie Craytor	0	1

always fightin'

Senior **Jaclyn Marszal** transferred to Delaware after playing her freshman season at the University of Notre Dame, going from the Fighting Irish to the Fightin' Blue Hens. Marszal is UD's top returning scorer from a season ago when she had 21 goals and 29 assists for 50 points. Entering her third season with the Blue & Gold, Marszal has 97 points (46g, 51a) in 32 games for Delaware after scoring two goals in five games at Notre Dame.

no place like home

Senior **Ella Rishko** played her first two collegiate seasons at Virginia Tech before transferring home to the First State to play her final two years as a Blue Hen alongside her sister **Lulu**. The Rehoboth Beach, Delaware native led UD with 36 goals and 55 draw controls in 2025, finishing with 45 total points. In two seasons at Virginia Tech, Rishko had 61 goals and 75 points over 32 games.

new opponents on schedule

With Delaware beginning a New Era in the ASUN this season, the Blue Hens will be facing a number of first-time opponents. Eight of the team's 16 games will be against programs UD has never played, including seven of Delaware's eight ASUN matchups. The new opponents consist of Navy (Feb. 18), Austin Peay (March 19), Lindenwood (March 21), Jacksonville (March 26), Stetson (March 28), Kennesaw State (Apr. 9), Queens (Apr. 16) and Liberty (Apr. 22).

impressive in the classroom

In addition to their success on the field, the Hens have been showcasing their hard work in the classroom as well. As a team, the Blue Hens had a 3.52 GPA during the 2025 fall semester and five student-athletes - **McKenzie Didio**, **Mia Didio**, **Amanda Gazelle**, **Morgan Gore** and **Jaclyn Marszal** - posted perfect 4.0 semesters.

matey family affair

Junior defender **Mary Matey** is continuing a couple of family legacies as she is the fourth sister in her family to play Division I college lacrosse. She overlapped in Newark with her sister **Kellie Ann** who was also a defender for the Blue Hens from 2021-24). She also had a sister, Rachel, who played defense at James Madison (2019-23) and her oldest sister, Meghan, was a midfielder at Ohio State (2017-20).

Since 2021, Matey and her sisters have all worn #22 on the lacrosse field to honor their late father, Dave, who tragically passed away after a battle with cancer. He wore #22 as a college football linebacker at Ursinus.

ASUN STANDINGS

Team	ASUN	OVR	STRK
Coastal Carolina	0-0	2-0	W2
Austin Peay	0-0	1-0	W1
Jacksonville	0-0	1-0	W1
Delaware	0-0	0-1	L1
Kennesaw State	0-0	0-1	L1
Liberty	0-0	0-1	L1
Lindenwood	0-0	0-1	L1
Queens	0-0	0-1	L1
Stetson	0-0	0-1	L1

2026 AWARDS LIST

ASUN Offensive Player of the Week

ASUN Defensive Player of the Week

GOAL/POINT STREAKS

Name	Consecutive Games	
	w/Point	w/Goal
Riley Sturtevant	9	5
Jaclyn Marszal	9	0
Morgan Gore	7	7
Grayson Buono	1	1
Callie Drab	1	1
Maggie Porter	1	1
Ella Rishko	1	1

SCORING SUPERLATIVES

Career Games w/	Multi	Multi	5+
Name	Point	Goal	Point
Ella Rishko	31	25	9
Jaclyn Marszal	27	11	7
Morgan Gore	19	17	1
Callie Drab	14	6	1
Sam Paradise	6	5	0
Riley Sturtevant	4	4	0
McKenzie Didio	3	3	0
Lulu Rishko	3	2	0
Maggie Craytor	1	1	0
Grayson Buono	1	0	0
Sophia Muscolino	1	0	0
Maggie Porter	1	0	0

ALTIG VS.

OPPONENT	H	A	N	OVR
Army	0-1	0-0	0-0	0-1
Austin Peay *	0-0	0-0	0-0	0-0
Campbell	1-0	1-0	0-0	2-0
Coastal Carolina	0-1	0-0	0-0	0-1
Delaware State	1-0	0-0	0-0	1-0
Denver	0-0	0-1	0-0	0-1
Drexel	0-2	0-2	0-1	0-5
Duquesne	1-0	0-0	0-0	1-0
Elon	2-0	2-1	0-0	4-1
George Mason	0-0	0-1	0-0	0-1
Georgetown	0-3	1-2	0-0	1-5
Hofstra	0-2	2-0	0-0	2-2
Jacksonville *	0-0	0-0	0-0	0-0
James Madison	0-0	0-1	0-0	0-1
Kennesaw State *	0-0	0-0	0-0	0-0
Kent State	1-0	0-0	0-0	1-0
La Salle	1-0	0-1	0-0	1-1
Lafayette	2-0	0-0	0-0	2-0
Lehigh	1-0	1-0	0-0	2-0
Liberty *	0-0	0-0	0-0	0-0
Lindenwood *	0-0	0-0	0-0	0-0
Maryland	0-0	0-1	0-0	0-1
Monmouth	2-0	1-0	0-0	3-0
Mount St. Mary's	1-0	1-0	0-0	2-0
Navy *	0-0	0-0	0-0	0-0
Niagara	0-0	0-0	0-1	0-1
Old Dominion	1-0	1-0	0-0	2-0
Penn	0-0	0-1	0-0	0-1
Princeton	0-1	0-0	0-0	0-1
Queens *	0-0	0-0	0-0	0-0
Rutgers	0-1	0-2	0-0	0-3
Saint Joseph's	0-1	0-1	0-0	0-2
Stetson *	0-0	0-0	0-0	0-0
Stony Brook	0-1	0-2	0-1	0-4
Temple	1-2	1-2	0-0	2-4
Towson	1-2	1-0	0-1	2-3
UMBC	1-1	2-0	0-0	3-1
Wagner	1-0	1-0	0-0	2-0
William & Mary	2-0	0-2	0-0	2-2
TOTALS	20-18	16-19	0-4	36-41

Bold indicates 2026 opponent
 * Indicates first meeting in 2026

glenelg pipeline

The Blue Hens have done well recruiting in Maryland, with 12 Marylanders on the 2026 roster. Particularly, there are four Hens on the roster who hail from Howard County and attended high school in Glenelg. Senior twins **Jaclyn** and **Steph Marszal** (Catonsville) as well as sophomore **Nichelle Desbordes** (Ellicott City) all come from Glenelg Country School, while sophomore **Lara Hoeflich** (Glenelg) went to Glenelg High School.

head hen

Jordan Skolnick was named the University of Delaware's Director of Athletics & Campus Recreation. Skolnick joined UD Athletics in 2016 and served as interim director of athletics & campus recreation since March 2025. He is the eighth person in the department's history to hold the permanent role. Skolnick will be responsible for leading the Fightin' Blue Hens' 22 varsity teams, spirit program, and robust campus recreation unit. A native of Storrs, Conn., Skolnick successfully guided the department through its transitions to Conference USA and the Football Bowl Subdivision (FBS), while prioritizing a renewed focus on campus collaboration to increase partnerships and ensure the University's ability to capitalize on increased national exposure.

for the 302

Delaware is one of 11 states that are represented by one area code. Delaware is the 302, while the other states are: Alaska, Hawaii, Maine, Montana, New Hampshire, North Dakota, Rhode Island, South Dakota, Vermont, and Wyoming.

birds of a feather

With over 1,100 schools across three divisions in the NCAA, the Blue Hens are one of two institutions with the nickname in the hen family. Pomona- Pitzer, a Division III institution, is nicknamed the Sagehens. Both South Carolina and Jacksonville State have the nickname Gamecocks and Coastal Carolina is the Chanticleers, which both fall in the rooster family.

best bird in the land

YoUDee is one of 11 NCAA inductees in the Mascot Hall of Fame and the only one in the ASUN. The beloved Fightin' Blue Hens' mascot turned 32 on September 4, 2025.

MILESTONE WATCH

150-Career Points	
Ella Rishko	123
100-Career Points	
Morgan Gore	72
100-Delaware Points	
Jaclyn Marszal	99
50-Career Ground Balls	
Kat Baseggio	45
Morgan Gore	40
Jaclyn Marszal	33
Maggie Farragher	33
50-Career Draw Controls	
Morgan Gore	42
50-Career Caused Turnovers	
Kat Baseggio	29

GAMES/STARTS STREAKS

	Consecutive	
	GP	GS
Morgan Gore *	49	12
Kat Baseggio *	33	28
Callie Drab	33	0
Jaclyn Marszal *	33	1
Riley Sturtevant	18	8
Ella Rishko *	17	17
Lulu Rishko	15	0
Grayson Buono	11	0
Steph Marszal	10	10
Molly Baumgratz	9	6
Kennedy Radziul	9	1
Maggie Farragher	4	4
Lena Stolarick	2	2
Mary Matey	2	1
Maggie Porter	1	1
Maggie Craytor	1	0
Sydney O'Donnell	1	0

* indicates has played every game of UD career

2026 DELAWARE NUMERICAL ROSTER

#	NAME	POS.	YR.	HT.	HOMETOWN/HIGH SCHOOL (PREV. SCHOOL)
1	Stella Stolarick	A	So.	5-5	Haddonfield, N.J. / Haddonfield Memorial
2	Grayson Buono	A	So.	5-7	Wayne, Pa. / Radnor
3	Lara Hoeflich	D	So.	5-7	Glenelg, Md. / Glenelg High
4	Marin Mooney	A	Fr.	5-8	Villanova, Pa. / Radnor
6	Jenny Green	D	Fr.	5-5	Garnet Valley, Pa. / Garnet Valley
7	Julia Ciufu	M	Jr.	5-3	Reisterstown, Md. / Roland Park Country
8	Jaclyn Marszal	A	Sr.	5-8	Catonsville, Md. / Glenelg Country School (Notre Dame)
9	Kat Baseggio	D	Jr.	5-9	Guilford, Conn. / Guilford
10	McKenzie Didio	A	Sr.	5-6	Westport, Conn. / Staples
11	Julia Reagan	M	Sr.	5-3	East Atlantic Beach, N.Y. / Sacred Heart Academy
12	Erin Hussey	M	Fr.	5-7	Severna Park, Md. / Severna Park
13	Maggie Craytor	A	So.	6-0	Charlottesville, Va. / Western Albemarle
14	Sophia Muscolino	A	Jr.	5-4	Baldwinsville, N.Y. / Charles W. Baker
15	Meg MacMurray	A	So.	5-8	Chester Springs, Pa. / The Hill School (Maryland)
16	Callie Drab	A	Sr.	5-7	Suffern, N.Y. / Suffern
17	Morgan Gore	M	Sr.	5-6	Crofton, Md. / Arundel
18	Lena Stolarick	D	So.	5-4	Haddonfield, N.J. / Haddonfield Memorial
19	Maggie Porter	A	Fr.	5-5	Stevenson, Md. / St. Paul's School for Girls (Penn State)
20	Sam Paradise	M	Jr.	5-8	Perry Hall, Md. / Maryvale Preparatory
21	Kate Mercer	D	Sr.	5-8	Katonah, N.Y. / John Jay
22	Mary Matey	D	Jr.	5-6	Phoenixville, Pa. / Archbishop Carroll
23	Lulu Rishko	M	So.	5-5	Rehoboth Beach, Del. / Cape Henlopen
24	Kylie O'Brien	D	So.	5-6	Berwyn, Pa. / Academy of Notre Dame de Namur
25	Amanda Gazelle	M	Fr.	5-3	Odenton, Md. / Archbishop Spalding
26	Alison Swartout	M	Sr.	5-4	Charlottesville, Va. / Monticello
27	Maddy Mobilia	D	Jr.	5-1	New Rochelle, N.Y. / The Ursuline School
28	Maggie Farragher	D	Sr.	5-7	Evanston, Ill. / Evanston Township
29	Kennedy Radziul	D	So.	5-9	Northport, N.Y. / Northport
30	Marina Mersch	GK	Fr.	5-3	Media, Pa. / Cardinal O'Hara
31	Maddie George	GK	So.	5-9	Centreville, Md. / Queen Anne's County
32	Ella Rishko	A	Sr.	5-5	Rehoboth Beach, Del. / Cape Henlopen (Virginia Tech)
33	Sydney O'Donnell	M	So.	5-8	Downingtown, Pa. / Downingtown West
34	Riley Sturtevant	M	Sr.	5-7	Springfield, Va. / West Springfield
35	Nichelle Desbordes	M	So.	5-3	Ellicott City, Md. / Glenelg Country School
37	Mia Didio	M	Sr.	5-5	Westport, Conn. / Staples
38	Sadie Schultz	M	Fr.	5-6	Riverhead, N.Y. / Riverhead
40	Steph Marszal	GK	R-Sr.	5-4	Catonsville, Md. / Glenelg Country School
41	Molly Baumgratz	M	Jr.	5-8	Charlotte, N.C. / Charlotte Catholic
42	Ellie Dassoulas	A	Sr.	5-8	Towson, Md. / Roland Park Country School

GEOGRAPHICAL

Connecticut (3)

- 9 Kat Baseggio
- 10 McKenzie Didio
- 37 Mia Didio

Delaware (2)

- 32 Ella Rishko
- 23 Lulu Rishko

Illinois (1)

- 28 Maggie Farragher

Maryland (12)

- 3 Lara Hoeflich
- 7 Julia Ciufu
- 8 Jaclyn Marszal
- 12 Erin Hussey
- 17 Morgan Gore
- 19 Maggie Porter
- 20 Sam Paradise
- 25 Amanda Gazelle
- 31 Maddie George
- 35 Nichelle Desbordes
- 40 Steph Marszal
- 42 Ellie Dassoulas

North Carolina (1)

- 41 Molly Baumgratz

New Jersey (2)

- 18 Lena Stolarick
- 1 Stella Stolarick

New York (7)

- 11 Julia Reagan
- 14 Sophia Muscolino
- 16 Callie Drab
- 21 Kate Mercer
- 27 Maddy Mobilia
- 29 Kennedy Radziul
- 38 Sadie Schultz

Pennsylvania (8)

- 2 Grayson Buono
- 4 Marin Mooney
- 6 Jenny Green
- 15 Meg MacMurray
- 22 Mary Matey
- 24 Kylie O'Brien
- 30 Marina Mersch
- 33 Sydney O'Donnell

Virginia (3)

- 13 Maggie Craytor
- 26 Alison Swartout
- 34 Riley Sturtevant

PRO-NUN-SEE-AY-SHUNS

1 Stella Stolarick	STOLL-are-ick	27 Maddy Mobilia	Moe-BEAL-yuh
2 Grayson Buono	BYOU-no	28 Maggie Farragher	FAIR-uh-grr
3 Lara Hoeflich	LAH-ruh HOE-flick	29 Kennedy Radziul	RAD-zool
4 Marin Mooney	MARE-in	30 Marina Mersch	MERSH
7 Julia Ciufu	CHEW-foe	34 Riley Sturtevant	STIR-duh-vont
8 Jaclyn Marszal	MARZ-elle	35 Nichelle Desbordes	des-BORE-des
9 Kat Baseggio	Buh-SEE-GEE-oh	37 Mia Didio	DID-ee-oh
10 McKenzie Didio	DID-ee-oh	40 Steph Marszal	MARZ-elle
14 Sophia Muscolino	Mus-KUH-lee-no	41 Molly Baumgratz	BUM-gratz
18 Lena Stolarick	LEE-nuh STOLL-are-ick	42 Ellie Dassoulas	da-SOOL-is
22 Mary Matey	MAY-tee	AC Kara Nakrasius	Nah-KRAY-shus
26 Alison Swartout	SWORE-tout	AC Lilly Siskind	sis-KIND

ROSTER BY CLASS

SENIORS (13)

- Ellie Dassoulas
- McKenzie Didio
- Mia Didio
- Callie Drab
- Maggie Farragher
- Morgan Gore
- Jaclyn Marszal
- Steph Marszal
- Kate Mercer
- Julia Reagan
- Ella Rishko
- Riley Sturtevant
- Alison Swartout

JUNIORS (7)

- Kat Baseggio
- Molly Baumgratz
- Julia Ciufu
- Mary Matey
- Maddy Mobilia
- Sophia Muscolino
- Sam Paradise

SOPHOMORES (12)

- Grayson Buono
- Maggie Craytor
- Nichelle Desbordes
- Maddie George
- Lara Hoeflich
- Meg MacMurray
- Kylie O'Brien
- Sydney O'Donnell
- Kennedy Radziul
- Lulu Rishko
- Lena Stolarick
- Stella Stolarick

FRESHMEN (7)

- Amanda Gazelle
- Jenny Green
- Erin Hussey
- Marina Mersch
- Marin Mooney
- Maggie Porter
- Sadie Schultz

HEAR OUR NAMES





THE ALTIG FILE

Hometown: Millersville, Md.
Alma Mater: James Madison '05
Degree: Kinesiology
Years in Coaching: 21st in 2026

NOTABLE HIGHLIGHTS

Coach

2015 IWLCA Assistant Coach of the Year
 U.S. Lacrosse Virginia Chapter Hall of Fame
 USA National Team Defensive Coordinator

Player

2x All-CAA selection
 2x CAA Champion
 2009 USA World Cup Training Team
 2008 USA Prague Touring Team
 2003 USA National Team

AS DELAWARE HEAD COACH

Year	7th in 2026
Overall Record	36-41
Home	20-18
Away	16-19
Neutral	0-4
vs. Ranked Teams	1-12
In ASUN Games	0-0
Postseason	0-3

ALTIG YEAR-BY-YEAR

YEAR	W-L	PCT.	CONF
2020	2-3	.400	1-0
2021	1-5	.167	0-0
2022	5-12	.294	2-4
2023	8-8	.500	4-3
2024	10-6	.625	3-5
2025	10-6	.625	6-2
2026	0-1	.000	0-0
TOTAL	36-41	.468	16-14

First career win: 17-8 vs. Duquesne (3/4/20)

HEAD COACH AMY ALTIG

Amy Altig enters her seventh season at the helm of the Fightin' Blue Hens in 2026. She was named the seventh coach of University of Delaware women's lacrosse program on June 3, 2019.

Altig has led the Blue Hens to immense success on the field, qualifying for the CAA Championship in three of four years since 2022. The program recorded back-to-back 10-win seasons in 2024-25, achieving the mark for the first time 2016, and UD's 7-1 record to begin the 2024 season was the best start since the 2016 season. Delaware won six CAA games in 2025, the most since joining the conference and the program's most league wins since 1999.

On March 11, 2022, the Blue Hens defeated No. 18 Temple on the road for their first win over a nationally-ranked opponent since 2017.

Delaware's student-athletes have taken home plenty of hardware since Altig arrived in Newark. Delaney McDaniel earned CAA Rookie of the Year honors in 2018, UD's first conference major award winner since 2016. Madison Hranicka was named the CAA Defensive Player of the Year in consecutive seasons (2023-24). The Blue Hens have earned 14 all-conference honors, led by three-straight All-CAA First Team selections by Hranicka (2022-24) and three by McDaniel. On the national level, Hranicka earned All-America honors in 2024 and all-region recognition in both 2023 and 2024. Erin Gormley was an all-region selection in 2025.

The Blue & Gold have had several statistical achievements with Altig at the helm. In 2025, the Blue Hens led the CAA and ranked sixth nationally in free position percentage (.545) while also ranking eighth in the country in caused turnovers per game (11.19). Against Lafayette in 2024, the Blue Hens set a program record for caused turnovers (26) and tied the record for ground balls (33). Goalkeeper Steph Marzsai finish ninth in the country in save percentage (.489) in 2024. Hranicka set the single-season program record in 2023 with 50 caused turnovers.

Altig arrived to Newark following nine seasons at Penn State University, where she was an assistant coach for six years and an associate head coach for the final three. She helped lead the Nittany Lions to 111 wins with seven NCAA Tournament appearances and two trips to the NCAA Tournament Final Four. During her tenure, she coached 19 All-Americans, 36 all-region performers, 40 all-conference selections in addition to more than 25 student-athletes who received academic honors. Additionally, PSU boasted three Conference Goalkeepers of the Year under Altig's guidance.

After helping Penn State to a third NCAA quarterfinal appearance in four years in 2015, Altig was named IWLCA Assistant Coach of the Year and was inducted to the U.S. Lacrosse Virginia Chapter Hall of Fame.

Prior to her time at PSU, Altig held assistant coaching stints at Princeton University (2007-10) and the University of Richmond (2005-06).

As a goalkeeper at James Madison University from 2001-05, Altig led the Dukes to two CAA titles, was a two-time all-conference pick and was selected to the North/South STX Senior All-Star Game. A two-time team captain, she also earned a nod to the 2004 CAA All-Tournament Team and still ranks in the Top 12 of three career statistical categories at JMU.

Altig earned a spot on the USA National Team in 2003 and was part of the 2009 USA World Cup Training Team and 2008 USA Prague Touring Team. She also served as a field coach for USA Tryouts from 2015-17. Since 2017, Altig has been the defensive coordinator/goalkeepers coach for the USA National Team.

A native of Millersville, Md., Altig earned a bachelor's degree in kinesiology with a concentration in sports management from James Madison in 2005. She and her wife, Megan, have two daughters, Ava, and Ryan, and a son, Brooks.

ALTIG'S COACHING ASSIGNMENTS

YEAR	SCHOOL	POSITION
2020-Pres.	Delaware	Head Coach
2017-19	Penn State	Associate Head Coach
2011-16	Penn State	Assistant Coach
2007-10	Princeton	Assistant Coach
2005-06	Richmond	Assistant Coach

SUPERLATIVES UNDER ALTIG

Most Goals	20, vs. Delaware State (2/24/21)	Most Opp. Goals	20, 2x, last vs. Drexel (5/1/25)
Fewest Goals	2, 2x, last at Maryland (3/1/22)	Fewest Opp. Goals	3, vs. Delaware State (2/24/21)
Most SOG	36, vs. Delaware State (2/24/21)	Most Opp. SOG	36, at Maryland (3/1/22)
Fewest SOG	6, vs. Stony Brook (4/6/24)	Fewest Opp. SOG	6, 2x, last vs. Lafayette (3/6/24)
Most GBs	33, vs. Lafayette (3/6/24)	Most Opp. GBs	30, vs. William & Mary (4/9/22)
Most CTs	26, vs. Lafayette (3/6/24)	Most Opp. CTs	19, vs. Lafayette (3/6/24)
Most DCs	26, vs. Old Dominion (2/25/23)	Most Opp. DCs	28, vs. Georgetown (3/8/25)
Most Saves	21, at Maryland (3/1/22)	Most Opp. Saves	20, 2x, last at Old Dominion (3/26/22)

ASSISTANT COACHES

KARA NAKRASIOUS



Kara Nakrasious joined the coaching staff in August 2022 as an assistant coach and was promoted to associate head coach in June 2025. Nakrasious works primarily with the program's defensive and draw control units.

Under her guidance, the UD defense ranked in the top-10 nationally in 2024 and 2025 in caused turnovers per game. In 2024, the Blue Hens held opponents to the least number of goals allowed (160) since the 2017 season. Madison Hranicka earned back-to-back CAA Defensive Player of the Year recognition in 2023 and 2024.

At the draw, Nakrasious oversaw Delaware's unit that shattered the program record for draws in a single season (240) in 2023, averaging a CAA-leading 15.0 draw controls per game. Delaware set a program record with 26 draw controls in a single-game against Old Dominion. Danielle Livornese became UD's career draw control leader, finishing with 223. Ella Rishko set the individual single-game mark with 15 draw controls against Towson in 2025.

Prior to her arrival at UD, Nakrasious was on staff at Quinnipiac as an assistant coach in 2022, leading a defense that allowed a league-low 197 goals and ranked second in the MAAC with 8.88 caused turnovers per game.

Nakrasious was a five-year starter at Temple from 2016-21, where she was a four-year captain for the Owls. She broke the career draw control record with a total of 236 and ranked seventh in program history with 144 ground balls.

She was a two-time all-conference selection, earning All-AAC First Team honors in 2019 and second team recognition in 2021. Nakrasious was a four-time winner of the Devon Marie Lam "T" Means More Award which is given to the person who most exemplifies Temple Lacrosse through selflessness, dedication & desire for team success (2017-20). She was also a winner of the Enterprise Spirit & Sportsmanship Award (2017) & Parliament Award (2019) for the student-athlete who has demonstrated a devotion to the essence of sport through their acts of sportsmanship.

Nakrasious earned both her bachelor's (2020) and master's (2021) degrees from Temple University.

SAMANTHA PRATT



Sam Pratt joined the Delaware women's lacrosse coaching staff as an associate head coach and offensive coordinator in August 2024.

In her first season with the Blue Hens, UD's offense averaged 13.06 goals per game to rank third in the CAA and was second in assists per game (6.25). Delaware led the conference and ranked sixth nationally with a .545 free position percentage, and Morgan Gore set the program record with 13 free position goals. Gore and Delaney McDaniel were named to the All-CAA Second Team while Lulu Rishko earned all-rookie honors.

Pratt came to Delaware after spending six seasons on the coaching staff at Mount St. Mary's. During her tenure, Pratt coached 29 student-athletes to all-league honors between the Northeast Conference (NEC) and the Metro Atlantic Athletic Conference (MAAC). The team posted a 63-35 record and sported a pair of NEC Offensive Players of the Year, an NEC Midfielder of the Year, and a NEC Rookie of the Year. Her offense in 2019 ranked 20th nationally in scoring with 14.11 goals per game. Two years later, the team finished 14th in the country with 15.06 goals per game.

Prior to joining the staff at Mount St. Mary's Pratt spent a season at La Salle where she served as offensive coordinator.

Pratt, then Sam Nolan, was a two-year team captain at UMBC (2013-17). She finished her career with 117 goals and 73 assists for 190 points, graduating as the program's all-time leader in assists, and ranked third in career points. She was a First Team All-America East selection in her final two seasons.

The Fallston, Maryland native earned a pair of degrees from UMBC in sociology (2016) and media and communication (2017). She received a master's degree in sport management from Mount St. Mary's in 2019.

Sam and her husband, Joe, a former UMBC men's soccer player, were married in 2022. The two have a pair of labrador retrievers, Finley & Champion.

LILLY SISKIND



Lilly Siskind joined the Blue Hens after a five-year collegiate career at Old Dominion University, where she set multiple program records and garnered national recognition.

While at ODU, Siskind was a starter in 74 of 80 career games played. She collected 214 points with 149 goals and 65 assists over her five seasons with the program, adding 46 ground balls, 30 draw controls, and 33 caused turnovers.

Nationally, Siskind ranked in the top 10 for most career points in American Athletic Conference (AAC) history. In 2022, she ranked fourth & second in the AAC and 25th & 22nd national for most points and goals, respectively. Additionally, she earned First Team All-AAC in 2022, Second Team All-AAC in 2021, and VaSIDA All-State Second Team in 2021 & 2022.

Siskind left her mark on the ODU program, finishing third in career points, fourth career assists, and fifth in career goals.

Off the field, Siskind completed two bachelor's degrees in marketing and management along with a master's degree in sports management over her five-year tenure at ODU. She picked up an Academic All-District honor this past season as well as recognition from the AAC All-Academic, Conference USA academic honor roll, Big East academic honor roll, and ODU honor roll.

Siskind grew up in West Chester, Pennsylvania where she played lacrosse at Henderson High School. Her father was also a collegiate lacrosse player and spent his career at Towson where he was given All-American status his senior season.

SUPPORT STAFF

Jake Schrum

Sport Administrator

Wes Hamilton

Academic Advisor

Kelly Stafford

Athletic Trainer

Dr. Christine Jehu

Sport Psychologist

Austin Mark

Team Nutritionist

Jack Levis

Equipment Manager

Brendan Thomas

Athletic Communications

Ryan Stiles

Strength & Conditioning Coach

UNIVERSITY OF DELAWARE

IN THE RANKINGS

The University of Delaware is ranked in the top 1.6% globally, among nearly 21,000 institutions, based on educational quality, employability, faculty quality and research. In late 2024, Wall Street Journal ranked UD at No. 10 among public universities and No. 26 among all U.S. universities based on student professional readiness and career outcomes.

Physical Therapy graduate program
No. 1 in the nation
(U.S. News & World Report)

One of 24 UD graduate programs ranked in the top-100 by U.S. News

Entrepreneurship undergraduate program
No. 3 in the Mid-Atlantic
(The Princeton Review)

Chemical Engineering undergraduate program
No. 4 in the nation
(U.S. News & World Report)

One of six UD undergraduate programs ranked in the top-100 by U.S. News

Chemical Engineering graduate program
No. 8 in the nation
(U.S. News & World Report)

One of 24 UD graduate programs ranked in the top-100 by U.S. News

Online MBA program
No. 20 out of 355 in the nation
(U.S. News & World Report)

Online Master's in Education program
No. 20 out of 313 in the nation
(U.S. News & World Report)

Nursing undergraduate program
No. 40 in the nation
(U.S. News & World Report)
A 34-spot jump from last year's ranking

BEST VALUE

UD ranks among the country's best value propositions, according to U.S. News & World Report, Wall Street Journal, Kiplinger's and Forbes. This summer, The Princeton Review ranked UD among its 209 Best Value Colleges for 2025, earning one of the publication's highest return-on-investment ratings. Money magazine awarded UD 4½ stars out of a possible five in its 2025-26 rating of America's best colleges. The University, according to Money, "stands out for its affordability" as a public college providing an excellent value for in-state students, and is considered one of the Best Colleges in the Northeast.

distinguished history

In 1743, the school that would become the University of Delaware was just a tiny institution, with a graduating class of about a dozen. Three of those graduates – **Thomas McKean**, **George Read** and **James Smith** – would go on to sign the Declaration of Independence; Read would also sign the U.S. Constitution, helping launch a new paradigm of freedom for an entire nation and a beacon of liberty for much of the world.

first in study abroad

In 1923, UD initiated a program to enhance students' learning by giving them an overseas experience. Influenced by the carnage he saw as an ambulance driver in World War I, professor **Raymond Kirkbride** believed that understanding other cultures was critical to promoting peace. His idea would grow into the first study-abroad program in the United States. Today approximately a third of all UD students participate in study abroad programs offered around the world. This year, the University celebrates the 10-year anniversary of its World Scholars Program, through which a cohort of new students experience their first UD semester abroad. These students return to UD for the spring and, as juniors, they can elect one of 40 study-abroad experiences.

introducing ud's new leadership

Interim President **Laura Carlson** and Interim Provost **Bill Farquhar** have been at the helm since July 1. Carlson joined the University of Delaware community in 2022, serving as its chief academic officer when she became the University's 12th Provost. Farquhar has been a faculty member for more than 23 years in UD's Department of Kinesiology and Applied Physiology. He most recently served as the dean of UD's College of Health Sciences.

student applications are climbing

Interest in a University of Delaware education continues to soar. UD received more than 40,000 applications for this year's class of first-year students, setting a UD record for the seventh consecutive year. Over the last year, UD hosted more than 38,000 visitors (prospective students and their families) at open houses and campus tours, and awarded more than \$200 million in financial aid to its newest students.

incorporating ai into curriculum

AI has the potential to reshape higher education. UD has applied this technology in myriad ways and continues to explore further applications for artificial intelligence – including the launch of new academic offerings like an undergraduate major, a graduate degree program and a certificate; the creation of UD's First State AI Institute; and the incorporation of generative AI into curricula.

PROMINENT ALUMNI



joe Biden '65



chris christie '84



joe flacco '08



elena delle donne '13

delaware STARTERS BY GAME

OPPONENT	D	D	D	D	D	M	M	M	A	A	A	GK
at Temple	Baseggio	L. Stolarick	Matey	Farragher	Radziul	Gore	Sturtevant	Baumgratz	J. Marszal	Porter	E. Rishko	S. Marszal
Rutgers												
Navy												
UMBC												
at Georgetown												
at Drexel												
Mount St. Mary's												
at Austin Peay												
at Lindenwood												
Jacksonville												
Stetson												
Saint Joseph's												
Kennesaw State												
Coastal Carolina												
at Queens												
at Liberty												

delaware STAT LEADERS BY GAME

OPPONENT	GOALS	ASSISTS	POINTS	SOG	GB	CT	DC	SAVES
at Temple	Gore/E. Rishko (3)	Drab/J. Marszal (2)	Drab/Gore/E. Rishko (3)	E. Rishko (6)	Radziul/E. Rishko (3)	Radziul (3)	E. Rishko (9)	S. Marszal (5)
Rutgers								
Navy								
UMBC								
at Georgetown								
at Drexel								
Mount St. Mary's								
at Austin Peay								
at Lindenwood								
Jacksonville								
Stetson								
Saint Joseph's								
Kennesaw State								
Coastal Carolina								
at Queens								
at Liberty								



delaware HIGHS AND LOWS

GAME HIGHS**2026**

Goals	10, at Temple (2/6/26)
Assists	6, at Temple (2/6/26)
Goals in a Quarter	4, Q1, at Temple (2/6/26)
1H Goals	6, at Temple (2/6/26)
2H Goals	4, at Temple (2/6/26)
Shots Attempted	29, at Temple (2/6/26)
Shots on Goal	16, at Temple (2/6/26)
Ground Balls	14, at Temple (2/6/26)
Draw Controls	16, at Temple (2/6/26)
Turnovers	22, at Temple (2/6/26)
Caused Turnovers	8, at Temple (2/6/26)
Saves	5, at Temple (2/6/26)
Clears	14, at Temple (2/6/26)

ALTIG ERA

20, vs. Delaware State (2/24/21)
13, at William & Mary (3/30/24)
9, 2x, last Q3 vs. Monmouth (4/27/24)
12, 2x, last vs. Kent State (2/25/24)
13, at William & Mary (3/30/24)
47, vs. Lafayette, (2/15/23)
36, vs. Delaware State (2/24/21)
33, vs. Lafayette (3/6/24)
26, vs. Old Dominion (2/25/23)
28, vs. Old Dominion (2/25/23)
26, vs. Lafayette (3/6/24)
21, at Maryland (3/1/22)
27, vs. Lafayette (3/6/24)

GAME LOWS**2026**

Goals	10, at Temple (2/6/26)
Assists	6, at Temple (2/6/26)
Goals in a Quarter	1, Q4, at Temple (2/6/26)
1H Goals	6, at Temple (2/6/26)
2H Goals	4, at Temple (2/6/26)
Shots Attempted	29, at Temple (2/6/26)
Shots on Goal	16, at Temple (2/6/26)
Ground Balls	14, at Temple (2/6/26)
Draw Controls	16, at Temple (2/6/26)
Turnovers	22, at Temple (2/6/26)
Caused Turnovers	8, at Temple (2/6/26)
Saves	5, at Temple (2/6/26)
Clears	14, at Temple (2/6/26)

ALTIG ERA

2, at Maryland (3/1/22)
0, 2x, last at La Salle (2/27/21)
0, 17x, last Q1 at Stony Brook (4/6/24)
0, 2x, last at Maryland (3/1/22)
1, 2x, last vs. Stony Brook (5/4/23)
7, at Stony Brook (4/6/24)
6, at Stony Brook (4/6/24)
6, vs. Temple (2/20/21)
5, 2x, last at Denver (3/13/23)
9, 2x, last vs. Delaware State (2/24/21)
2, 2x, last at Stony Brook (3/18/23)
3, 3x, last vs. Lafayette (3/6/24)
10, at Monmouth (3/30/25)

PLAYER HIGHS UNDER ALTIG

Goals	6, Lizzie Yurchak, vs. Monmouth, 3/25/23
Assists	7, Delaney McDaniel, vs. Lafayette, 2/15/23
Points	9, Jaclyn Marszal, at William & Mary, 3/30/24
Shots Attempted	13, Mia DeRuggiero, vs. Elon, 3/7/20
Shots on Goal	8, 3x, last Lizzie Hsu, at Hofstra, 4/8/23
Ground Balls	8, Madison Hranicka, vs. Lafayette, 3/6/24
Caused Turnovers	11, Madison Hranicka, vs. Lafayette, 3/6/24
Turnovers	7, Mia DeRuggiero, vs. Duquesne, 3/4/20
Draw Controls	15, Ella Rishko, at Towson, 4/13/25
Saves	18, Kate Brewster, at Rutgers, 2/15/20

opponent

HIGHS AND LOWS

GAME HIGHS

	2026	ALTIG ERA
Goals	12, at Temple (2/6/26)	20, 2x, last at Drexel (5/1/25)
Goals in a Quarter	6, Q4, at Temple (2/6/26)	9, Q3 vs. Stony Brook (5/4/23)
1H Goals	3, at Temple (2/6/26)	12, 3x, at Drexel (5/1/25)
2H Goals	9, at Temple (2/6/26)	11, 4x, last vs. Stony Brook (5/4/23)
Shots Attempted	22, at Temple (2/6/26)	46, vs. Hofstra (4/14/24)
Shots on Goal	15, at Temple (2/6/26)	36, at Maryland (3/1/22)
Ground Balls	18, at Temple (2/6/26)	30, vs. William & Mary (4/9/22)
Draw Controls	8, at Temple (2/6/26)	28, vs. Georgetown (3/8/25)
Turnovers	16, at Temple (2/6/26)	34, vs. Lafayette (3/6/24)
Caused Turnovers	15, at Temple (2/6/26)	19, vs. Lafayette (3/6/24)
Saves	9, at Temple (2/6/26)	20, 2x, last at Old Dominion (3/26/22)
Clears	16, at Temple (2/6/26)	26, vs. Towson (3/24/24)

GAME LOWS

	2026	ALTIG ERA
Goals	12, at Temple (2/6/26)	3, vs. Delaware State (2/24/21)
Goals in a Quarter	0, Q1, at Temple (2/6/26)	0, 21x, last Q1 at Temple (2/6/26)
1H Goals	3, at Temple (2/6/26)	1, 4x, last vs. Lafayette (3/6/24)
2H Goals	9, at Temple (2/6/26)	0, vs. Elon (3/7/20)
Shots Attempted	22, at Temple (2/6/26)	9, vs. Delaware State (2/24/21)
Shots on Goal	15, at Temple (2/6/26)	6, 2x, last vs. Lafayette (3/6/24)
Ground Balls	18, at Temple (2/6/26)	6, at Campbell (4/11/25)
Draw Controls	8, at Temple (2/6/26)	2, vs. Towson (3/24/24)
Turnovers	16, at Temple (2/6/26)	7, at Stony Brook (3/18/23)
Caused Turnovers	15, at Temple (2/6/26)	2, at Drexel (3/30/22)
Saves	9, at Temple (2/6/26)	2, at Stony Brook (4/6/24)
Clears	16, at Temple (2/6/26)	7, vs. Delaware State (2/24/21)

DELAWARE SINGLE GAME RECORDS

	INDIVIDUAL	TEAM
Goals	11, Ann Pasquariello, vs. Hofstra, 5/12/79	36, vs. Towson State, 4/24/86
Assists	9, 2x, last Mia DeRuggiero vs. Oregon 3/27/19	18, vs. Hofstra, 4/22/90
Points	16, Karen Emas, vs. Bucknell, 4/17/84	49, vs. Towson State, 4/24/86
Shots Attempted	--	65, vs. Towson State, 4/24/86
Shots on Goal	8, 3x, last Lizzie Hsu, at Hofstra, 4/8/23	36, vs. Delaware State, 2/24/21
Ground Balls	17, Lisa Blanc, vs. Lehigh, 5/8/83	88, vs. Bucknell, 4/18/87
Caused Turnovers	11, Madison Hranicka, vs. Lafayette, 3/6/24	26, vs. Lafayette, 3/6/24
Draw Controls	15, Ella Rishko, at Towson, 4/13/25	26, vs. Old Dominion, 2/25/23
Saves	36, Lisa McBeth, at West Chester, 5/5/78	36, vs. West Chester, 5/5/78

delaware SEASON STATS

Delaware Combined Team Statistics (as of Feb 11, 2026) All games

RECORD:	OVERALL	HOME	AWAY	NEUTRAL
ALL GAMES	0-1	0-0	0-1	0-0
CONFERENCE	0-0	0-0	0-0	0-0
NON-CONFERENCE	0-1	0-0	0-1	0-0

DATE	OPPONENT	SCORE	ATT.
02/06/2026	at Temple	L, 12-10	248
TEAM STATISTICS		DELAWARE	OPP
SHOT STATISTICS			
Goals-Shot attempts		10-29	12-22
Goals scored per game		10.00	12.00
Shot pct.		.345	.545
Shots on goal-Attempts		19-29	17-22
SOG pct.		.655	.773
Shots/Game		29.0	22.0
Assists		6	5
Free position made-Att		2-5	1-3
Free position pct.		.400	.333
GOAL BREAKDOWN			
Total Goals		10	12
Free-position		2	1
Unassisted		4	7
Overtime		0	0
GROUND BALLS		14	18
DRAW CONTROLS		16	8
TURNOVERS		22	16
CAUSED TURNOVERS		8	15
CLEARs		14-17	16-18
Clear Pct.		.824	.889
PENALTIES			
Red Cards		0	0
Yellow Cards		1	1
Green Cards		5	5
Total		0	0
Minutes		7:00	7:00
ATTENDANCE			
Total		-	248
Dates/Avg per date		0/0	1/248
Neutral Site #/Avg		0/0	-

##	PLAYER	GP	G	A	PTS	SH	GB	DC	TO	CT
9	Kat Baseggio	1	0	0	0	0	2	0	1	1
41	Molly Baumgratz	1	0	0	0	0	0	1	1	0
2	Grayson Buono	1	1	1	2	2	0	0	2	0
13	Maggie Craytor	1	0	0	0	0	0	0	1	0
16	Callie Drab	1	1	2	3	2	1	0	2	0
28	Maggie Farragher	1	0	0	0	0	1	0	0	0
17	Morgan Gore	1	3	0	3	5	1	5	1	1
8	Jaclyn Marszal	1	0	2	2	4	0	0	3	0
40	Steph Marszal	1	0	0	0	0	1	0	0	0
22	Mary Matey	1	0	0	0	0	0	0	1	1
33	Sydney O'Donnell	1	0	0	0	1	0	0	0	0
19	Maggie Porter	1	1	1	2	4	0	0	3	0
29	Kennedy Radziul	1	0	0	0	0	3	0	1	3
32	Ella Rishko	1	3	0	3	9	3	9	3	1
23	Lulu Rishko	1	0	0	0	1	1	1	0	0
18	Lena Stolarick	1	0	0	0	0	1	0	1	1
34	Riley Sturtevant	1	1	0	1	1	0	0	0	0
Totals		1	10	6	16	29	14	16	22	8
Opponents		1	12	5	17	22	18	8	16	15
##	GOALIE	GP	MIN	GA	GA AVG	SAVES	PCT	W-L-T		
40	Steph Marszal	1	60:00	12	12.00	5	.294	0-1-0		
Totals		1	60:00	12	12.00	5	.294	0-0-0		
Opponents		1	60:00	10	10.00	9	.474	0-0-0		
GOALS BY PERIOD		1	2	3	4	OT	TOTAL			
Delaware		4	2	3	1	0	10			
Opponents		0	3	3	6	0	12			
SAVES BY PERIOD		1	2	3	4	OT	TOTAL			
Delaware		2	1	2	0	0	5			
Opponents		0	3	1	5	0	9			
SHOTS BY PERIOD		1	2	3	4	OT	TOTAL			
Delaware		6	6	7	10	0	29			
Opponents		4	4	7	7	0	22			
SHOTS ON GOAL		1	2	3	4	OT	TOTAL			
Delaware		3	3	4	6	0	16			
Opponents		1	3	5	6	0	15			

delaware NCAA RANKINGS

Statistic	National Rank	Conference Rank	Value	National Leader	Value	Conference Leader	Value
Assists Per Game (89 ranked)	28	3	6.00	Clemson	15.00	Jacksonville	8.00
Assists Per Game (0 ranked)							
Caused Turnovers Per Game (89 ranked)	41	4	8.00	Liberty	19.00	Liberty	19.00
Clearing Percentage (90 ranked)	61	5	0.824	11 teams tied	1.000	Lindenwood	0.958
Draw Control Percentage (91 ranked)	14	2	0.667	Austin Peay	0.839	Austin Peay	0.839
Draw Controls Per Game (90 ranked)	17	3	16.00	Austin Peay	26.00	Austin Peay	26.00
Face-Off Win Percentage (0 ranked)							
Fouls Per Game (86 ranked)	8	1	3.00	4 teams tied	1.00	Delaware	3.00
Free Position Percentage (77 ranked)	44	3	0.400	4 teams tied	1.000	Austin Peay Jacksonville	0.500 0.500
Ground Balls Per Game (91 ranked)	42	5	14.00	Davidson La Salle	33.00 33.00	Liberty	28.00
Points Per Game (90 ranked)	42	5	16.00	Clemson	35.00	Coastal Carolina	24.50
Red Cards (0 ranked)							
Saves Percentage (91 ranked)	77	6	0.294	Maryland	0.762	Jacksonville	0.529
Scoring Defense (91 ranked)	49	3	12.00	Georgetown La Salle	3.00 3.00	Jacksonville	8.00
Scoring Margin (45 ranked)				George Washington Clemson South Fla.	15.00 15.00 15.00	Coastal Carolina	8.00
Scoring Offense (89 ranked)	48	5	10.00	George Washington	22.00	Coastal Carolina	17.00
Shot Percentage (90 ranked)	64	5	0.345	Old Dominion	0.667	Coastal Carolina	0.493
Shots Per Game (91 ranked)	39	5	29.00	South Fla.	49.00	Lindenwood	40.00
Shots on Goal Per Game (91 ranked)	43	5	19.00	La Salle	34.00	Coastal Carolina Jacksonville Lindenwood	25.00 25.00 25.00
Turnovers Per Game (91 ranked)	83	7	22.00	Butler George Washington	5.00 5.00	Jacksonville	11.00
Win Percentage (53 ranked)	53	4	0.000	46 teams tied	1.000	Austin Peay Coastal Carolina Jacksonville	1.000 1.000 1.000
Yellow Cards (46 ranked)	46	5	1	Coastal Carolina Xavier	5 5	Coastal Carolina	5

delaware NCAA RANKINGS

Statistic	Player	National Rank	Conference Rank	Value	National Leader	Value	Conference Leader	Value
Assists (124 ranked)	Callie Drab	48	4	2	Delaney Radin, Penn St. Madison Taylor, Northwestern	6	Alexandra Horn, Coastal Carolina Nikki Seven, Coastal Carolina	5
	Jaclyn Marszal	48	4	2		6		5
	Grayson Buono	124	12	1				
	Maggie Porter	124	12	1				
Assists Per Game (112 ranked)	Callie Drab	39	4	2.00	Delaney Radin, Penn St.	6.00	Luci Selander, Lindenwood	3.00
	Jaclyn Marszal	39	4	2.00				
	Grayson Buono	112	12	1.00				
	Maggie Porter	112	12	1.00				
Caused Turnovers Per Game (138 ranked)	Kennedy Radziul	16	1	3.00	Sabrina Martin, Temple	6.00	4 players tied	3.00
					Kate O'Neill, Villanova	6.00		
					Molly Wood, Georgetown	6.00		
Draw Controls Per Game (135 ranked)	Ella Rishko	13	5	9.00	Sawyer Walker, Howard	19.00	Lauryn Warfield, Austin Peay	13.00
	Morgan Gore	50	7	5.00				
Face-Off Win Percentage (0 ranked)								
Free Position Goals Per Game (135 ranked)	Morgan Gore	26	2	1.00	Jessica Giller, Jacksonville	3.00	Jessica Giller, Jacksonville	3.00
	Ella Rishko	26	2	1.00	Alyssa Jarvis, Detroit Mercy	3.00		
					Maddie Tredway, Gardner-Webb	3.00		
Free Position Percentage (138 ranked)	Ella Rishko	1	1	1.000	93 players tied	1.000	5 players tied	1.000
	Morgan Gore	99	6	0.500				
Goals (82 ranked)	Morgan Gore	82	7	3	Madison Taylor, Northwestern	11	Alexandra Horn, Coastal Carolina	8
	Ella Rishko	82	7	3				
Goals Per Game (125 ranked)	Morgan Gore	62	6	3.00	Ava Angello, Johns Hopkins	8.00	Olivia Johnson, Jacksonville	5.00
	Ella Rishko	62	6	3.00				
Goals-Against Average (82 ranked)	Steph Marszal	42	4	12.00	Mary Babbage, La Salle Leah Warehime, Georgetown	3.00 3.00	Elia Alewine, Jacksonville	8.00
Ground Balls Per Game (134 ranked)	Kennedy Radziul	55	5	3.00	Emma Anderson, Gardner-Webb	9.00	4 players tied	4.00
	Ella Rishko	55	5	3.00				
	Kat Baseggio	134	15	2.00				
Points (85 ranked)					Madison Taylor, Northwestern	17	Alexandra Horn, Coastal Carolina	13
Points Per Game (137 ranked)	Callie Drab	137	11	3.00	Madison Taylor, Northwestern	8.50	Alexandra Horn, Coastal Carolina	6.50
	Morgan Gore	137	11	3.00				
	Ella Rishko	137	11	3.00				
Save Percentage (82 ranked)	Steph Marszal	66	5	0.294	JJ Suriano, Maryland	0.762	Elia Alewine, Jacksonville	0.529
Saves (108 ranked)	Steph Marszal	71	6	5	Jenika Cuocco, Northwestern	27	Maddie Eckert, Stetson	12
Saves Per Game (82 ranked)	Steph Marszal	64	6	5.00	Sophie Pasnak, Manhattan	18.00	Maddie Eckert, Stetson	12.00
Shot Percentage (113 ranked)	Morgan Gore	80	5	0.600	11 players tied	1.000	Sophia Schwab, Austin Peay	0.750
Shots Per Game (121 ranked)	Ella Rishko	17	3	9.00	Ava Angello, Johns Hopkins	14.00	Reese Krieger, Lindenwood	11.00
	Morgan Gore	121	14	5.00				
Shots on Goal Per Game (95 ranked)	Ella Rishko	28	1	6.00	Brienne Brezynskie, UMass Lowell	10.00	5 players tied	6.00

#1 STELLA STOLARICK | A | SO. | HADDONFIELD, N.J.

CAREER-HIGHS		SEASON-HIGHS		CAREER STATS								
GOALS	N/A	GOALS	N/A	YEAR	GP/GS	G	A	PTS	SOG	GB	CT	DC
ASSISTS	N/A	ASSISTS	N/A	2025	0/0	0	0	0	0	0	0	0
POINTS	N/A	POINTS	N/A	2026	0/0	0	0	0	0	0	0	0
SHOTS ON GOAL	N/A	SHOTS ON GOAL	N/A	TOTAL	0/0	0	0	0	0	0	0	0
GROUND BALLS	N/A	GROUND BALLS	N/A									
CAUSED TURNOVERS	N/A	CAUSED TURNOVERS	N/A									
DRAW CONTROLS	N/A	DRAW CONTROLS	N/A									

#2 GRAYSON BUONO | A | SO. | WAYNE, PA.

CAREER-HIGHS		SEASON-HIGHS		CAREER STATS								
GOALS	1, at Temple, 2/7/26	GOALS	1, at Temple, 2/7/26	YEAR	GP/GS	G	A	PTS	SOG	GB	CT	DC
ASSISTS	1, at Temple, 2/7/26	ASSISTS	1, at Temple, 2/7/26	2025	13/2	0	0	0	0	0	1	21
POINTS	2, at Temple, 2/7/26	POINTS	2, at Temple, 2/7/26	2026	1/0	1	1	2	2	0	0	0
SHOTS ON GOAL	2, at Temple, 2/7/26	SHOTS ON GOAL	2, at Temple, 2/7/26	TOTAL	14/2	1	1	2	2	0	1	21
GROUND BALLS	N/A	GROUND BALLS	N/A									
CAUSED TURNOVERS	1, vs Drexel, 3/21/25	CAUSED TURNOVERS	N/A									
DRAW CONTROLS	5, vs. Stony Brook, 3/23/25	DRAW CONTROLS	N/A									

#3 LARA HOEFELICH | D | SO. | GLENELG, MD.

CAREER-HIGHS		SEASON-HIGHS		CAREER STATS								
GOALS	N/A	GOALS	N/A	YEAR	GP/GS	G	A	PTS	SOG	GB	CT	DC
ASSISTS	N/A	ASSISTS	N/A	2025	2/0	0	0	0	0	0	1	0
POINTS	N/A	POINTS	N/A	2026	0/0	0	0	0	0	0	0	0
SHOTS ON GOAL	N/A	SHOTS ON GOAL	N/A	TOTAL	2/0	0	0	0	0	0	1	0
GROUND BALLS	N/A	GROUND BALLS	N/A									
CAUSED TURNOVERS	1, vs. Temple, 2/7/25	CAUSED TURNOVERS	N/A									
DRAW CONTROLS	N/A	DRAW CONTROLS	N/A									

#4 MARIN MOONEY | A | FR. | VILLANOVA, PA.

CAREER-HIGHS		SEASON-HIGHS		CAREER STATS								
GOALS	N/A	GOALS	N/A	YEAR	GP/GS	G	A	PTS	SOG	GB	CT	DC
ASSISTS	N/A	ASSISTS	N/A	2026	0/0	0	0	0	0	0	0	0
POINTS	N/A	POINTS	N/A	TOTAL	0/0	0	0	0	0	0	0	0
SHOTS ON GOAL	N/A	SHOTS ON GOAL	N/A									
GROUND BALLS	N/A	GROUND BALLS	N/A									
CAUSED TURNOVERS	N/A	CAUSED TURNOVERS	N/A									
DRAW CONTROLS	N/A	DRAW CONTROLS	N/A									

#6 JENNY GREEN | D | FR. | GARNET VALLEY, PA.

CAREER-HIGHS	SEASON-HIGHS
GOALS _____ N/A	GOALS _____ N/A
ASSISTS _____ N/A	ASSISTS _____ N/A
POINTS _____ N/A	POINTS _____ N/A
SHOTS ON GOAL _____ N/A	SHOTS ON GOAL _____ N/A
GROUND BALLS _____ N/A	GROUND BALLS _____ N/A
CAUSED TURNOVERS _____ N/A	CAUSED TURNOVERS _____ N/A
DRAW CONTROLS _____ N/A	DRAW CONTROLS _____ N/A

CAREER STATS								
YEAR	GP/GS	G	A	PTS	SOG	GB	CT	DC
2026	0/0	0	0	0	0	0	0	0
TOTAL	0/0	0	0	0	0	0	0	0

#7 JULIA CIUFO | M | JR. | REISTERSTOWN, MD.

CAREER-HIGHS	SEASON-HIGHS
GOALS _____ 1, vs. Mount St. Mary's, 2/17/24	GOALS _____ N/A
ASSISTS _____ N/A	ASSISTS _____ N/A
POINTS _____ 1, vs. Mount St. Mary's, 2/17/24	POINTS _____ N/A
SHOTS ON GOAL _____ 1, 3x, last at Temple, 2/21/24	SHOTS ON GOAL _____ N/A
GROUND BALLS _____ 3, at Temple, 2/21/24	GROUND BALLS _____ N/A
CAUSED TURNOVERS _____ 1, at Temple, 2/21/24	CAUSED TURNOVERS _____ N/A
DRAW CONTROLS _____ N/A	DRAW CONTROLS _____ N/A

CAREER STATS								
YEAR	GP/GS	G	A	PTS	SOG	GB	CT	DC
2024	4/0	1	0	1	3	4	2	0
2025	0/0	0	0	0	0	0	0	0
2026	0/0	0	0	0	0	0	0	0
TOTAL	4/0	1	0	1	3	4	2	0

#8 JACLYN MARSZAL | A | SR. | CATONSVILLE, MD.

CAREER-HIGHS	SEASON-HIGHS
GOALS _____ 5, at Lehigh, 2/9/24	GOALS _____ N/A
ASSISTS _____ 6, at William & Mary, 3/30/24	ASSISTS _____ 2, at Temple, 2/7/26
POINTS _____ 9, at William & Mary, 3/30/24	POINTS _____ 2, at Temple, 2/7/26
SHOTS ON GOAL _____ 6, 2x, last vs. Drexel, 3/21/25	SHOTS ON GOAL _____ 2, at Temple, 2/7/26
GROUND BALLS _____ 4, 2x, last at Mount St. Mary's, 2/22/25	GROUND BALLS _____ N/A
CAUSED TURNOVERS _____ 1, 5x, last at Towson 4/13/25	CAUSED TURNOVERS _____ N/A
DRAW CONTROLS _____ 1, 2x, last vs. Hofstra, 4/20/24	DRAW CONTROLS _____ N/A

CAREER STATS								
YEAR	GP/GS	G	A	PTS	SOG	GB	CT	DC
2023*	5/0	2	0	2	3	0	0	0
2024	16/15	25	22	47	36	19	4	2
2025	16/8	21	29	50	44	14	1	0
2026	1/1	0	2	2	2	0	0	0
UD	33/24	46	53	99	82	33	5	2
TOTAL	38/24	48	53	101	85	33	5	2

* at Notre Dame

#9 KAT BASEGGIO | D | JR. | GUILFORD, CONN.

CAREER-HIGHS	SEASON-HIGHS
GOALS _____ N/A	GOALS _____ N/A
ASSISTS _____ N/A	ASSISTS _____ N/A
POINTS _____ N/A	POINTS _____ N/A
SHOTS ON GOAL _____ N/A	SHOTS ON GOAL _____ N/A
GROUND BALLS _____ 4, 2x, last vs. Stony Brook, 3/23/25	GROUND BALLS _____ 2, at Temple, 2/7/26
CAUSED TURNOVERS _____ 4 vs. Stony Brook, 3/23/25	CAUSED TURNOVERS _____ 1, at Temple, 2/7/26
DRAW CONTROLS _____ 1, vs. Princeton, 2/26/25	DRAW CONTROLS _____ N/A

CAREER STATS								
YEAR	GP/GS	G	A	PTS	SOG	GB	CT	DC
2024	16/15	0	0	0	0	14	5	0
2025	16/16	0	0	0	0	29	23	1
2026	1/1	0	0	0	0	2	1	0
TOTAL	33/32	0	0	0	0	45	29	1

#10 MCKENZIE DIDIO | A | SR. | WESTPORT, CONN.

CAREER-HIGHS		SEASON-HIGHS		CAREER STATS								
GOALS		GOALS		YEAR	GP/GS	G	A	PTS	SOG	GB	CT	DC
2, 3x, last vs. Kent State, 2/25/24			N/A	2023	16/1	10	0	10	23	1	0	0
ASSISTS		ASSISTS		2024	9/0	5	0	5	8	1	0	0
	N/A		N/A	2025	2/0	0	0	0	0	0	0	0
POINTS		POINTS		2026	0/0	0	0	0	0	0	0	0
2, 3x, last vs. Kent State, 2/25/24			N/A	TOTAL	27/1	15	0	15	31	2	0	0
SHOTS ON GOAL		SHOTS ON GOAL										
5, vs. Old Dominion, 2/25/23			N/A									
GROUND BALLS		GROUND BALLS										
1, 2x, last vs. Campbell (4/12/24)			N/A									
CAUSED TURNOVERS		CAUSED TURNOVERS										
	N/A		N/A									
DRAW CONTROLS		DRAW CONTROLS										
	N/A		N/A									

#11 JULIA REAGAN | M | SR. | EAST ATLANTIC BEACH, N.Y.

CAREER-HIGHS		SEASON-HIGHS		CAREER STATS								
GOALS		GOALS		YEAR	GP/GS	G	A	PTS	SOG	GB	CT	DC
	N/A		N/A	2023	1/0	0	0	0	0	0	0	1
ASSISTS		ASSISTS		2024	1/0	0	0	0	0	0	0	0
	N/A		N/A	2025	0/0	0	0	0	0	0	0	0
POINTS		POINTS		2026	0/0	0	0	0	0	0	0	0
	N/A		N/A	TOTAL	2/0	0	0	0	0	0	0	1
SHOTS ON GOAL		SHOTS ON GOAL										
	N/A		N/A									
GROUND BALLS		GROUND BALLS										
	N/A		N/A									
CAUSED TURNOVERS		CAUSED TURNOVERS										
	N/A		N/A									
DRAW CONTROLS		DRAW CONTROLS										
1, at Denver, 3/13/23			N/A									

#12 ERIN HUSSEY | M | FR. | SEVERNA PARK, MD.

CAREER-HIGHS		SEASON-HIGHS		CAREER STATS								
GOALS		GOALS		YEAR	GP/GS	G	A	PTS	SOG	GB	CT	DC
	N/A		N/A	2026	0/0	0	0	0	0	0	0	0
ASSISTS		ASSISTS		TOTAL	0/0	0	0	0	0	0	0	0
	N/A		N/A									
POINTS		POINTS										
	N/A		N/A									
SHOTS ON GOAL		SHOTS ON GOAL										
	N/A		N/A									
GROUND BALLS		GROUND BALLS										
	N/A		N/A									
CAUSED TURNOVERS		CAUSED TURNOVERS										
	N/A		N/A									
DRAW CONTROLS		DRAW CONTROLS										
	N/A		N/A									

#13 MAGGIE CRAYTOR | A | SO. | CHARLOTTESVILLE, VA.

CAREER-HIGHS		SEASON-HIGHS		CAREER STATS								
GOALS		GOALS		YEAR	GP/GS	G	A	PTS	SOG	GB	CT	DC
3, vs. Temple, 2/7/25			N/A	2025	7/0	5	0	5	10	1	1	0
ASSISTS		ASSISTS		2026	1/0	0	0	0	0	0	0	0
	N/A		N/A	TOTAL	8/0	5	0	5	10	1	1	0
POINTS		POINTS										
3, vs. Temple, 2/7/25			N/A									
SHOTS ON GOAL		SHOTS ON GOAL										
3, 2x, last at Rutgers, 2/15/25			N/A									
GROUND BALLS		GROUND BALLS										
1, vs. Temple, 2/7/25			N/A									
CAUSED TURNOVERS		CAUSED TURNOVERS										
1, vs. Temple, 2/7/25			N/A									
DRAW CONTROLS		DRAW CONTROLS										
	N/A		N/A									

#14 SOPHIA MUSCOLINO | A | JR. | BALDWINVILLE, N.Y.

CAREER-HIGHS	SEASON-HIGHS
GOALS 1, 4x, last vs. Stony Brook, 3/23/25	GOALS N/A
ASSISTS 1, at Wagner, 3/9/24	ASSISTS N/A
POINTS 2, at Wagner, 3/9/24	POINTS N/A
SHOTS ON GOAL 2, vs. Georgetown, 3/8/25	SHOTS ON GOAL N/A
GROUND BALLS 1, 3x, last at Hofstra, 3/14/25	GROUND BALLS N/A
CAUSED TURNOVERS N/A	CAUSED TURNOVERS N/A
DRAW CONTROLS N/A	DRAW CONTROLS N/A

CAREER STATS								
YEAR	GP/GS	G	A	PTS	SOG	GB	CT	DC
2024	8/0	2	1	3	2	2	0	0
2025	10/0	2	0	2	4	1	0	0
2026	0/0	0	0	0	0	0	0	0
TOTAL	18/0	4	1	5	6	3	0	0

#15 MEG MACMURRAY | A | SO. | CHESTER SPRINGS, PA.

CAREER-HIGHS	SEASON-HIGHS
GOALS N/A	GOALS N/A
ASSISTS N/A	ASSISTS N/A
POINTS N/A	POINTS N/A
SHOTS ON GOAL N/A	SHOTS ON GOAL N/A
GROUND BALLS N/A	GROUND BALLS N/A
CAUSED TURNOVERS N/A	CAUSED TURNOVERS N/A
DRAW CONTROLS N/A	DRAW CONTROLS N/A

CAREER STATS								
YEAR	GP/GS	G	A	PTS	SOG	GB	CT	DC
2025 *	0/0	0	0	0	0	0	0	0
2026	0/0	0	0	0	0	0	0	0
UD	0/0	0	0	0	0	0	0	0
TOTAL	0/0	0	0	0	0	0	0	0

* AT MARYLAND

#16 CALLIE DRAB | A | SR. | SUFFERN, N.Y.

CAREER-HIGHS	SEASON-HIGHS
GOALS 3, 2x, last vs. Wagner, 3/1/25	GOALS 1, at Temple, 2/7/26
ASSISTS 3, at William & Mary, 3/30/24	ASSISTS 2, at Temple, 2/7/26
POINTS 5, at UMBC, 3/5/25	POINTS 3, at Temple, 2/7/26
SHOTS ON GOAL 4, 2x, last vs. Georgetown, 3/8/25	SHOTS ON GOAL 2, at Temple, 2/7/26
GROUND BALLS 3, 2x, last vs. Wagner, 3/1/25	GROUND BALLS 1, at Temple, 2/7/26
CAUSED TURNOVERS 1, 4x, last vs. Wagner, 3/1/25	CAUSED TURNOVERS N/A
DRAW CONTROLS N/A	DRAW CONTROLS N/A

CAREER STATS								
YEAR	GP/GS	G	A	PTS	SOG	GB	CT	DC
2023	3/0	1	0	1	2	0	0	0
2024	16/0	13	9	22	17	7	2	0
2025	16/8	13	11	24	23	7	2	0
2026	1/0	1	2	3	2	1	0	0
TOTAL	17/8	28	22	50	44	15	4	0

#17 MORGAN GORE | M | SR. | CROFTON, MD.

CAREER-HIGHS	SEASON-HIGHS
GOALS 4, vs. Wagner, 3/1/25	GOALS 3, at Temple, 2/7/26
ASSISTS 1, 7x, last vs. Wagner, 3/1/25	ASSISTS N/A
POINTS 5, vs. Wagner, 3/1/25	POINTS 3, at Temple, 2/7/26
SHOTS ON GOAL 5, 2x, last at Towson, 4/13/25	SHOTS ON GOAL 4, at Temple, 2/7/26
GROUND BALLS 4, at Monmouth, 3/30/25	GROUND BALLS 1, at Temple, 2/7/26
CAUSED TURNOVERS 2, 5x, last at Drexel, 5/1/25	CAUSED TURNOVERS 1, at Temple, 2/7/26
DRAW CONTROLS 5, at Temple, 2/7/26	DRAW CONTROLS 5, at Temple, 2/7/26

CAREER STATS								
YEAR	GP/GS	G	A	PTS	SOG	GB	CT	DC
2023	16/1	15	4	19	19	11	2	9
2024	16/15	17	1	18	29	8	5	14
2025	16/15	30	2	32	43	20	10	15
2026	1/1	3	0	3	4	1	1	5
TOTAL	49/32	65	7	72	95	40	18	43

#18 LENA STOLARICK | D | SO. | HADDONFIELD, N.J.

CAREER-HIGHS		SEASON-HIGHS		CAREER STATS								
GOALS	N/A	GOALS	N/A	YEAR	GP/GS	G	A	PTS	SOG	GB	CT	DC
ASSISTS	N/A	ASSISTS	N/A	2025	13/4	0	0	0	0	10	8	3
POINTS	N/A	POINTS	N/A	2026	1/1	0	0	0	0	1	1	0
SHOTS ON GOAL	N/A	SHOTS ON GOAL	N/A	TOTAL	14/5	0	0	0	0	11	9	3
GROUND BALLS		GROUND BALLS										
4, vs. Princeton, 2/26/25		1, at Temple, 2/7/26										
CAUSED TURNOVERS		CAUSED TURNOVERS										
3, vs. Princeton, 2/26/25		1, at Temple, 2/7/26										
DRAW CONTROLS		DRAW CONTROLS										
2, at Towson, 4/13/25		N/A										

#19 MAGGIE PORTER | A | FR. | STEVENSON, MD.

CAREER-HIGHS		SEASON-HIGHS		CAREER STATS								
GOALS		GOALS		YEAR	GP/GS	G	A	PTS	SOG	GB	CT	DC
1, at Temple, 2/7/26		1, at Temple, 2/7/26		2026	1/1	1	1	2	2	0	0	0
ASSISTS		ASSISTS		TOTAL	1/1	1	1	2	2	0	0	0
1, at Temple, 2/7/26		1, at Temple, 2/7/26										
POINTS		POINTS										
2, at Temple, 2/7/26		2, at Temple, 2/7/26										
SHOTS ON GOAL		SHOTS ON GOAL										
2, at Temple, 2/7/26		2, at Temple, 2/7/26										
GROUND BALLS		GROUND BALLS										
N/A		N/A										
CAUSED TURNOVERS		CAUSED TURNOVERS										
N/A		N/A										
DRAW CONTROLS		DRAW CONTROLS										
N/A		N/A										

#20 SAM PARADISE | M | JR. | PERRY HALL, MD.

CAREER-HIGHS		SEASON-HIGHS		CAREER STATS								
GOALS		GOALS		YEAR	GP/GS	G	A	PTS	SOG	GB	CT	DC
4, vs. Georgetown, 3/8/25		N/A		2024	16/3	8	0	8	13	6	4	11
ASSISTS		ASSISTS		2025	9/9	12	2	14	21	5	4	29
2, vs. Temple, 2/7/25		N/A		2026	0/0	0	0	0	0	0	0	0
POINTS		POINTS		TOTAL	25/12	20	2	22	34	11	8	40
4, vs. Georgetown, 3/8/25		N/A										
SHOTS ON GOAL		SHOTS ON GOAL										
4, 3x, last vs. Georgetown, 3/8/25		N/A										
GROUND BALLS		GROUND BALLS										
2, vs. Georgetown, 3/8/25		N/A										
CAUSED TURNOVERS		CAUSED TURNOVERS										
2, 2x, last vs. Georgetown, 3/8/25		N/A										
DRAW CONTROLS		DRAW CONTROLS										
9, vs. Temple, 2/7/25		N/A										

#21 KATE MERCER | D | SR. | KATONAH, N.Y.

CAREER-HIGHS		SEASON-HIGHS		CAREER STATS								
GOALS		GOALS		YEAR	GP/GS	G	A	PTS	SOG	GB	CT	DC
N/A		N/A		2023	2/0	0	0	0	0	0	0	0
ASSISTS		ASSISTS		2024	4/0	0	0	0	0	0	0	0
N/A		N/A		2025	7/0	0	0	0	0	0	0	8
POINTS		POINTS		2026	0/0	0	0	0	0	0	0	0
N/A		N/A		TOTAL	13/0	0	0	0	0	0	0	8
SHOTS ON GOAL		SHOTS ON GOAL										
N/A		N/A										
GROUND BALLS		GROUND BALLS										
N/A		N/A										
CAUSED TURNOVERS		CAUSED TURNOVERS										
N/A		N/A										
DRAW CONTROLS		DRAW CONTROLS										
3, 2x, last vs. Georgetown, 3/8/25		N/A										

#22 MARY MATEY | D | JR. | PHOENIXVILLE, PA.

CAREER-HIGHS		SEASON-HIGHS		CAREER STATS								
GOALS	N/A	GOALS	N/A	YEAR	GP/GS	G	A	PTS	SOG	GB	CT	DC
ASSISTS	N/A	ASSISTS	N/A	2024	0/0	0	0	0	0	0	0	0
POINTS	N/A	POINTS	N/A	2025	7/1	0	0	0	0	0	1	0
SHOTS ON GOAL	N/A	SHOTS ON GOAL	N/A	2026	1/1	0	0	0	0	0	1	0
GROUND BALLS	N/A	GROUND BALLS	N/A	TOTAL	8/2	0	0	0	0	0	2	0
CAUSED TURNOVERS	1, 2x, last at Temple, 2/7/26	CAUSED TURNOVERS	1, at Temple, 2/7/26									
DRAW CONTROLS	N/A	DRAW CONTROLS	N/A									

#23 LULU RISHKO | M | SO. | REHOBOTH BEACH, DEL.

CAREER-HIGHS		SEASON-HIGHS		CAREER STATS								
GOALS	2, 2x, last at Towson, 4/13/25	GOALS	N/A	YEAR	GP/GS	G	A	PTS	SOG	GB	CT	DC
ASSISTS	1, 4x, last at Drexel, 5/1/25	ASSISTS	N/A	2025	14/0	7	4	11	10	13	7	0
POINTS	3, at Towson, 4/13/25	POINTS	N/A	2026	1/0	0	0	0	0	1	0	1
SHOTS ON GOAL	2, 4x, last at Drexel, 5/1/25	SHOTS ON GOAL	N/A	TOTAL	15/0	7	4	11	10	14	7	1
GROUND BALLS	4, at Monmouth, 3/30/25	GROUND BALLS	1, at Temple, 2/7/26									
CAUSED TURNOVERS	2, at UMBC, 3/5/25	CAUSED TURNOVERS	N/A									
DRAW CONTROLS	1, at Temple, 2/7/26	DRAW CONTROLS	1, at Temple, 2/7/26									

#24 KYLIE O'BRIEN | D | SO. | BERWYN, PA.

CAREER-HIGHS		SEASON-HIGHS		CAREER STATS								
GOALS	N/A	GOALS	N/A	YEAR	GP/GS	G	A	PTS	SOG	GB	CT	DC
ASSISTS	N/A	ASSISTS	N/A	2025	0/0	0	0	0	0	0	0	0
POINTS	N/A	POINTS	N/A	2026	0/0	0	0	0	0	0	0	0
SHOTS ON GOAL	N/A	SHOTS ON GOAL	N/A	TOTAL	0/0	0	0	0	0	0	0	0
GROUND BALLS	N/A	GROUND BALLS	N/A									
CAUSED TURNOVERS	N/A	CAUSED TURNOVERS	N/A									
DRAW CONTROLS	N/A	DRAW CONTROLS	N/A									

#25 AMANDA GAZELLE | M | FR. | ODENTON, MD.

CAREER-HIGHS		SEASON-HIGHS		CAREER STATS								
GOALS	N/A	GOALS	N/A	YEAR	GP/GS	G	A	PTS	SOG	GB	CT	DC
ASSISTS	N/A	ASSISTS	N/A	2026	0/0	0	0	0	0	0	0	0
POINTS	N/A	POINTS	N/A	TOTAL	0/0	0	0	0	0	0	0	0
SHOTS ON GOAL	N/A	SHOTS ON GOAL	N/A									
GROUND BALLS	N/A	GROUND BALLS	N/A									
CAUSED TURNOVERS	N/A	CAUSED TURNOVERS	N/A									
DRAW CONTROLS	N/A	DRAW CONTROLS	N/A									

#26 ALISON SWARTOUT | M | SR. | CHARLOTTESVILLE, VA.

CAREER-HIGHS	SEASON-HIGHS
GOALS 1, vs. Campbell, 4/12/24	GOALS N/A
ASSISTS N/A	ASSISTS N/A
POINTS 1, vs. Campbell, 4/12/24	POINTS N/A
SHOTS ON GOAL 1, 3x, last vs. Campbell, 4/12/24	SHOTS ON GOAL N/A
GROUND BALLS 1, 2x, last vs. Monmouth, 4/27/24	GROUND BALLS N/A
CAUSED TURNOVERS N/A	CAUSED TURNOVERS N/A
DRAW CONTROLS 1, vs. Kent State, 2/25/24	DRAW CONTROLS N/A

CAREER STATS								
YEAR	GP/GS	G	A	PTS	SOG	GB	CT	DC
2023	2/0	0	0	0	0	0	0	0
2024	13/0	1	0	1	3	2	0	1
2025	0/0	0	0	0	0	0	0	0
2026	0/0	0	0	0	0	0	0	0
TOTAL	15/0	1	0	1	3	2	0	1

#27 MADDY MOBILIA | D | JR. | NEW ROCHELLE, N.Y.

CAREER-HIGHS	SEASON-HIGHS
GOALS N/A	GOALS N/A
ASSISTS N/A	ASSISTS N/A
POINTS N/A	POINTS N/A
SHOTS ON GOAL N/A	SHOTS ON GOAL N/A
GROUND BALLS 4, 2x, last vs. Georgetown, 3/8/25	GROUND BALLS N/A
CAUSED TURNOVERS 3, vs. Temple, 2/7/25	CAUSED TURNOVERS N/A
DRAW CONTROLS 2, vs. Georgetown, 3/8/25	DRAW CONTROLS N/A

CAREER STATS								
YEAR	GP/GS	G	A	PTS	SOG	GB	CT	DC
2024	16/15	0	0	0	0	12	8	2
2025	16/16	0	0	0	0	16	16	5
2026	0/0	0	0	0	0	0	0	0
TOTAL	32/31	0	0	0	0	28	24	7

#28 MAGGIE FARRAGHER | D | SR. | EVANSTON, ILL.

CAREER-HIGHS	SEASON-HIGHS
GOALS N/A	GOALS N/A
ASSISTS N/A	ASSISTS N/A
POINTS N/A	POINTS N/A
SHOTS ON GOAL N/A	SHOTS ON GOAL N/A
GROUND BALLS 3, 3x, last at UMBC, 3/5/25	GROUND BALLS 1, at Temple, 2/7/26
CAUSED TURNOVERS 3, 3x, last at Monmouth, 3/30/25	CAUSED TURNOVERS N/A
DRAW CONTROLS 4, vs. Lafayette, 2/15/23	DRAW CONTROLS N/A

CAREER STATS								
YEAR	GP/GS	G	A	PTS	SOG	GB	CT	DC
2023	11/1	0	0	0	0	0	1	12
2024	16/15	0	0	0	0	12	13	3
2025	15/15	0	0	0	0	20	13	0
2026	1/1	0	0	0	0	1	0	0
TOTAL	43/32	0	0	0	0	33	27	15

#29 KENNEDY RADZIUL | D | SO. | NORTHPORT, N.Y.

CAREER-HIGHS	SEASON-HIGHS
GOALS N/A	GOALS N/A
ASSISTS N/A	ASSISTS N/A
POINTS N/A	POINTS N/A
SHOTS ON GOAL N/A	SHOTS ON GOAL N/A
GROUND BALLS 4, at Rutgers, 2/15/25	GROUND BALLS 3, at Temple, 2/7/26
CAUSED TURNOVERS 3, at Temple, 2/7/26	CAUSED TURNOVERS 3, at Temple, 2/7/26
DRAW CONTROLS 1, vs. Wagner, 3/1/25	DRAW CONTROLS N/A

CAREER STATS								
YEAR	GP/GS	G	A	PTS	SOG	GB	CT	DC
2025	15/11	0	0	0	0	20	12	1
2026	1/1	0	0	0	0	3	3	0
TOTAL	16/12	0	0	0	0	23	15	1

#30 MARINA MERSCH | GK | FR. | MEDIA, PA.

CAREER-HIGHS		SEASON-HIGHS	
FEWEST GOALS ALLOWED^	N/A	FEWEST GOALS ALLOWED^	N/A
SAVES	N/A	SAVES	N/A
SHOTS FACED	N/A	SHOTS FACED	N/A
SAVE PERCENTAGE^	N/A	SAVE PERCENTAGE^	N/A

^ MIN. 30 MINUTES PLAYED

CAREER STATS							
YEAR	GP/GS	W-L	GA	GAA	SV	SF	SV%
2026	0/0	0-0	0	0.00	0	0	.000
TOTAL	0/0	0-0	0	0.00	0	0	.000

#31 MADDIE GEORGE | GK | SO. | CENTREVILLE, MD.

CAREER-HIGHS		SEASON-HIGHS	
FEWEST GOALS ALLOWED^	N/A	FEWEST GOALS ALLOWED^	N/A
SAVES	N/A	SAVES	N/A
SHOTS FACED	N/A	SHOTS FACED	N/A
SAVE PERCENTAGE^	N/A	SAVE PERCENTAGE^	N/A

^ MIN. 30 MINUTES PLAYED

CAREER STATS							
YEAR	GP/GS	W-L	GA	GAA	SV	SF	SV%
2025	0/0	0-0	0	0.00	0	0	.000
2026	0/0	0-0	0	0.00	0	0	.000
TOTAL	0/0	0-0	0	0.00	0	0	.000

#32 ELLA RISHKO | A | SR. | REHOBOTH BEACH, DEL.

CAREER-HIGHS		SEASON-HIGHS	
GOALS	7, 2x, last vs. Pittsburgh, 4/23/23	GOALS	3, at Temple, 2/7/26
ASSISTS	2, 3x, last vs. William & Mary, 4/19/25	ASSISTS	N/A
POINTS	8, vs. Pittsburgh, 4/23/23	POINTS	3, at Temple, 2/7/26
SHOTS ON GOAL	9, vs. Louisville, 4/8/23	SHOTS ON GOAL	6, at Temple, 2/7/26
GROUND BALLS	4, vs. Pittsburgh, 4/23/23	GROUND BALLS	3, at Temple, 2/7/26
CAUSED TURNOVERS	4, vs. Pittsburgh, 4/23/23	CAUSED TURNOVERS	1, at Temple, 2/7/26
DRAW CONTROLS	15, at Towson, 4/13/25	DRAW CONTROLS	9, at Temple, 2/7/26

CAREER STATS								
YEAR	GP/GS	G	A	PTS	SOG	GB	CT	DC
2023 *	18/16	44	6	50	68	18	12	22
2024 *	14/8	17	8	25	34	14	7	16
2025	16/16	36	9	45	65	16	14	55
2026	1/1	3	0	3	6	3	1	9
UD	17/17	39	9	48	71	19	15	64
TOTAL	49/41	100	23	123	170	51	34	102

* AT VIRGINIA TECH

#33 SYDNEY O'DONNELL | M | SO. | DOWNINGTOWN, PA.

CAREER-HIGHS		SEASON-HIGHS	
GOALS	N/A	GOALS	N/A
ASSISTS	N/A	ASSISTS	N/A
POINTS	N/A	POINTS	N/A
SHOTS ON GOAL	N/A	SHOTS ON GOAL	N/A
GROUND BALLS	N/A	GROUND BALLS	N/A
CAUSED TURNOVERS	N/A	CAUSED TURNOVERS	N/A
DRAW CONTROLS	N/A	DRAW CONTROLS	N/A

CAREER STATS								
YEAR	GP/GS	G	A	PTS	SOG	GB	CT	DC
2025	0/0	0	0	0	0	0	0	0
2026	1/0	0	0	0	0	0	0	0
TOTAL	1/0	0	0	0	0	0	0	0

#34 RILEY STURTEVANT | M | SR. | SPRINGFIELD, VA.

CAREER-HIGHS	
GOALS	2x, 4x, last at Drexel, 5/1/25
ASSISTS	1, 2x, last vs. Elon, 4/4/25
POINTS	2, 4x, last at Drexel, 5/1/25
SHOTS ON GOAL	3, 3x, last at Drexel, 5/1/25
GROUND BALLS	3, vs. Temple, 2/7/25
CAUSED TURNOVERS	1, 6x, last at Campbell, 4/11/25
DRAW CONTROLS	N/A

SEASON-HIGHS	
GOALS	1, at Temple, 2/7/26
ASSISTS	N/A
POINTS	1, at Temple, 2/7/26
SHOTS ON GOAL	1, at Temple, 2/7/26
GROUND BALLS	N/A
CAUSED TURNOVERS	N/A
DRAW CONTROLS	N/A

CAREER STATS								
YEAR	GP/GS	G	A	PTS	SOG	GB	CT	DC
2023	0/0	0	0	0	0	0	0	0
2024	8/0	2	0	2	4	2	0	0
2025	16/9	13	2	15	19	11	6	0
2026	1/1	1	0	1	1	0	0	0
TOTAL	25/10	16	2	18	24	13	6	0

#35 NICHELLE DESBORDES | D | SO. | ELLICOTT CITY, MD.

CAREER-HIGHS	
GOALS	N/A
ASSISTS	N/A
POINTS	N/A
SHOTS ON GOAL	N/A
GROUND BALLS	N/A
CAUSED TURNOVERS	N/A
DRAW CONTROLS	N/A

SEASON-HIGHS	
GOALS	N/A
ASSISTS	N/A
POINTS	N/A
SHOTS ON GOAL	N/A
GROUND BALLS	N/A
CAUSED TURNOVERS	N/A
DRAW CONTROLS	N/A

CAREER STATS								
YEAR	GP/GS	G	A	PTS	SOG	GB	CT	DC
2025	0/0	0	0	0	0	0	0	0
2026	0/0	0	0	0	0	0	0	0
TOTAL	0/0	0	0	0	0	0	0	0

#37 MIA DIDIO | D | SR. | WESTPORT, CONN.

CAREER-HIGHS	
GOALS	N/A
ASSISTS	N/A
POINTS	N/A
SHOTS ON GOAL	N/A
GROUND BALLS	N/A
CAUSED TURNOVERS	N/A
DRAW CONTROLS	N/A

SEASON-HIGHS	
GOALS	N/A
ASSISTS	N/A
POINTS	N/A
SHOTS ON GOAL	N/A
GROUND BALLS	N/A
CAUSED TURNOVERS	N/A
DRAW CONTROLS	N/A

CAREER STATS								
YEAR	GP/GS	G	A	PTS	SOG	GB	CT	DC
2023	1/0	0	0	0	0	0	0	0
2024	0/0	0	0	0	0	0	0	0
2025	0/0	0	0	0	0	0	0	0
2026	0/0	0	0	0	0	0	0	0
TOTAL	1/0	0	0	0	0	0	0	0

#38 SADIE SCHULTZ | M | FR. | RIVERHEAD, N.Y.

CAREER-HIGHS	
GOALS	N/A
ASSISTS	N/A
POINTS	N/A
SHOTS ON GOAL	N/A
GROUND BALLS	N/A
CAUSED TURNOVERS	N/A
DRAW CONTROLS	N/A

SEASON-HIGHS	
GOALS	N/A
ASSISTS	N/A
POINTS	N/A
SHOTS ON GOAL	N/A
GROUND BALLS	N/A
CAUSED TURNOVERS	N/A
DRAW CONTROLS	N/A

CAREER STATS								
YEAR	GP/GS	G	A	PTS	SOG	GB	CT	DC
2026	0/0	0	0	0	0	0	0	0
TOTAL	0/0	0	0	0	0	0	0	0

#40 STEPH MARSZAL | GK | SR. | CATONSVILLE, MD.

CAREER-HIGHS	
FEWEST GOALS ALLOWED [^]	1, vs. Lafayette, 3/6/24
SAVES	14, at Lehigh, 2/9/24
SHOTS FACED	35 vs. Princeton, 2/26/25
SAVE PERCENTAGE [^]	.667, 4x, last at Wagner, 3/9/24

SEASON-HIGHS	
FEWEST GOALS ALLOWED [^]	12, at Temple, 2/7/26
SAVES	5, at Temple, 2/7/26
SHOTS FACED	22, at Temple, 2/7/26
SAVE PERCENTAGE [^]	.294, at Temple, 2/7/26

^ MIN. 30 MINUTES PLAYED

CAREER STATS							
YEAR	GP/GS	W-L	GA	GAA	SV	SF	SV%
2023	0/0	0-0	0	0.00	0	0	.000
2024	13/12	7-5	97	10.12	93	253	.489
2025	14/13	8-5	154	11.65	106	363	.408
2026	1/1	0-1	12	12.00	5	22	.294
TOTAL	28/26	15-11	263	11.05	204	638	.437

#41 MOLLY BAUMGRATZ | M | JR. | CHARLOTTE, N.C.

CAREER-HIGHS		SEASON-HIGHS	
GOALS	N/A	GOALS	N/A
ASSISTS	N/A	ASSISTS	N/A
POINTS	N/A	POINTS	N/A
SHOTS ON GOAL	N/A	SHOTS ON GOAL	N/A
GROUND BALLS	N/A	GROUND BALLS	N/A
CAUSED TURNOVERS	N/A	CAUSED TURNOVERS	N/A
DRAW CONTROLS	4, at Campbell, 4/11/25	DRAW CONTROLS	1, at Temple, 2/7/26

CAREER STATS								
YEAR	GP/GS	G	A	PTS	SOG	GB	CT	DC
2024	0/0	0	0	0	0	0	0	0
2025	12/5	0	0	0	0	0	0	14
2026	1/1	0	0	0	0	0	0	1
TOTAL	13/6	0	0	0	0	0	0	15

#42 ELLIE DASSOULAS | A | SR. | TOWSON, MD.

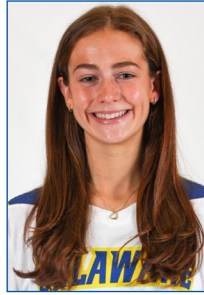
CAREER-HIGHS		SEASON-HIGHS	
GOALS	N/A	GOALS	N/A
ASSISTS	N/A	ASSISTS	N/A
POINTS	N/A	POINTS	N/A
SHOTS ON GOAL	N/A	SHOTS ON GOAL	N/A
GROUND BALLS	N/A	GROUND BALLS	N/A
CAUSED TURNOVERS	N/A	CAUSED TURNOVERS	N/A
DRAW CONTROLS	N/A	DRAW CONTROLS	N/A

CAREER STATS								
YEAR	GP/GS	G	A	PTS	SOG	GB	CT	DC
2023	0/0	0	0	0	0	0	0	0
2024	0/0	0	0	0	0	0	0	0
2025	0/0	0	0	0	0	0	0	0
2026	0/0	0	0	0	0	0	0	0
TOTAL	0/0	0	0	0	0	0	0	0

DELAWARE TV/RADIO CHART



1
Stella Stolarick
Sophomore | A
Haddonfield, N.J.
Haddonfield Memorial



2
Grayson Buono
Sophomore | A
Wayne, Pa.
Radnor



3
Lara Hoefflich
Sophomore | D
Glenelg, Md.
Glenelg High School



4
Marin Mooney
Freshman | A
Villanova, Pa.
Radnor



6
Jenny Green
Freshman | D
Garnet Valley, Pa.
Garnet Valley



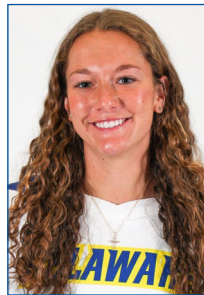
7
Julia Ciuffo
Junior | M
Reisterstown, Md.
Roland Park Country



8
Jaclyn Marszal
Senior | A
Catonsville, Md.
Glenelg Country School (Notre Dame)



9
Kat Baseggio
Junior | D
Guilford, Conn.
Guilford



10
McKenzie Dido
Senior | A
Westport, Conn.
Staples



11
Julia Reagan
Senior | M
East Atlantic Beach, N.Y.
Sacred Heart Academy



12
Erin Hussey
Freshman | M
Severna Park, Md.
Severna Park



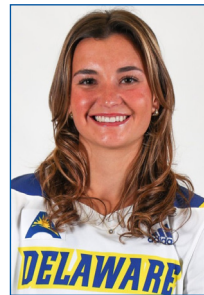
13
Maggie Crayro
Sophomore | A
Charlottesville, Va.
Western Albemarle



14
Sophia Muscolino
Junior | A
Baldwinsville, N.Y.
Charles W. Baker



15
Meg MacMurray
Sophomore | A
Chester Springs, Pa.
The Hill School (Maryland)



16
Callie Drab
Senior | A
Suffern, N.Y.
Suffern



17
Morgan Gore
Senior | M
Crofton, Md.
Arundel



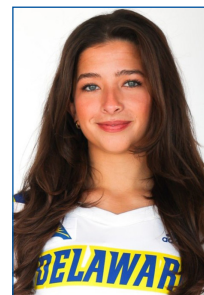
18
Lena Stolarick
Sophomore | D
Haddonfield, N.J.
Haddonfield Memorial



19
Maggie Porter
Freshman | A
Stevenson, Md.
St. Paul's School for Girls (Penn State)



20
Sam Paradise
Junior | M
Perry Hall, Md.
Maryvale Preparatory



21
Kate Mercer
Senior | D
Katonah, N.Y.
John Jay



22
Mary Matey
Junior | D
Phoenixville, Pa.
Archbishop John Carroll



23
Lulu Risko
Sophomore | M
Rehoboth Beach, Del.
Cape Henlopen



24
Kylie O'Brien
Sophomore | D
Berwyn, Pa.
Academy of Notre Dame



25
Amanda Gazelle
Freshman | M
Odenton, Md.
Archbishop Spalding

DELAWARE TV/RADIO CHART



26
Alison Swartout
Senior | M
Charlottesville, Va.
Monticello



27
Maddy Mobilia
Junior | D
New Rochelle, N.Y.
The Ursuline School



28
Maggie Farragher
Senior | D
Evanston, Ill.
Evanston Township



29
Kennedy Radziul
Sophomore | D
Northport, N.Y.
Northport



30
Marina Mersch
Freshman | GK
Media, Pa.
Cardinal O'Hara



31
Maddie George
Sophomore | GK
Centreville, Md.
Queen Anne's County



32
Ella Rishko
Senior | A
Rehoboth Beach, Del.
Cape Henlopen (Virginia Tech)



33
Sydney O'Donnell
Sophomore | M
Downingtown, Pa.
Downingtown West



34
Riley Sturtevant
Senior | M
Springfield, Va.
West Springfield



35
Nichelle Desbordes
Sophomore | D
Ellicott City, Md.
Glenelg Country School



37
Mia Didio
Senior | D
Westport, Conn.
Staples



38
Sadie Schultz
Freshman | M
Riverhead, N.Y.
Riverhead



40
Steph Marszal
Senior | GK
Catonsville, Md.
Glenelg Country School



41
Molly Baumgratz
Junior | M
Charlotte, N.C.
Charlotte Catholic



42
Ellie Dassoulas
Senior | A
Towson, Md.
Roland Park Country



Head Coach
Amy Altig
7th season



Assoc. Head Coach
Kara Nakrasius
4th season



Assoc. Head Coach
Sam Pratt
2nd season



Assistant Coach
Lilly Siskind
2nd season