



DELAWARE FIGHTIN' BLUE HENS

ICE HOCKEY GAME NOTES

a new era. 



Brendan Thomas, Director, Communications & Creative Services | 207-400-2840 | brendant@udel.edu

HOW TO FOLLOW

TV/Stream.....FloHockey
Play-by-Play.....Matt Popelka

Student Radio.....91.3 FM WVUD
Play-by-Play.....John Becker
Analyst.....Kat Henretty

X/Instagram.....@Delaware_IH
Live Stats.....bluehenstats.STATB.US
Tickets.....bluehens.com/IHTickets

GAME PROMOTIONS

Friday
Giveaway.....Foam Puck
Ceremonial Puck Drop.....Jordan Skolnick
.....Laura Carlson
.....Michelle Morgan

Saturday
Giveaway.....Mini Hockey Stick
Promotion.....Postgame Autographs

SERIES HISTORY

All Time.....0-0

WHO ARE WE

Only refer to our institution as the **University of Delaware** or **UD**. Do not use "U of D," "UofD," "the U of D" or "UDel." Do not use periods in "UD."

We are the Fightin' Blue Hens on first reference and Blue Hens, Hens, or Blue & Gold after that.

MEDIA RELATIONS

For interview requests for ice hockey student-athletes or coaches, please contact Brendan Thomas, Director of Communications & Creative Services.

Email.....brendant@udel.edu
Cell.....207-400-2840

DELAWARE (0-0-0)

GM
1-2



Head Coach: Allison Coomey
Record at UD: 0-0 (1st season)
Career Record: same
Last: n/a



LIU (0-0-0)

Head Coach: Kelly Nash
Record at LIU: 70-34-7 (4th season)
Career Record: same
Last: Lost, 4-2 vs. Sacred Heart

sept. 26 (6 pm) / sept. 27 (2 pm) | newark, del. | fred rust ice arena (1,350) | flohockey

PUCK DROP

✧ A new era of Delaware Athletics begins on Friday night as the Delaware ice hockey team begins its inaugural season.

✧ Delaware announced the addition of ice hockey as its 22nd varsity sport in December 2023. The Blue Hens are the 45th Division I women's ice hockey program in the country.

✧ The Fightin' Blue Hens have 22 student-athletes on their inaugural roster, featuring 17 freshmen and four transfers. Additionally, Delaware brought up goalie **Sydney Butler**, who spent the last three years playing for UD's club women's hockey team.

✧ Only four players on Delaware's roster have previously suited up in a Division I hockey game. Forward **Kaitlin Finnegan** appeared in 107 games in five seasons at Lindenwood, defenseman **Tiana McIntyre** played in 67 games in three seasons at Quinnipiac, forward **Danica Mark** saw action in 17 games over two seasons at Union, and goalie **Mattie Robitzer** appeared in four games in two seasons at Northeastern.

✧ The Blue & Gold will play 10-consecutive home games at Fred Rust Ice Arena to start the season, including Atlantic Hockey America (AHA) series against Penn State, Syracuse, and Robert Morris.

✧ LIU is also one of the newer Division I women's hockey programs, playing its first season in 2019-20. The Sharks are coming off a successful campaign last season, finishing 22-11-4 and advancing to the New England Women's Hockey Alliance (NEWHA) championship game.

✧ LIU has had three-straight 20-win seasons and is looking to replace its leading scorer and top goaltender from the 2024-25 season.

2025-26 SCHEDULE

 sept. 26/27 Newark, Del. 6 pm / 2 pm FloHockey	 oct. 4/5 Newark, Del. 2 pm / 2 pm FloHockey	 oct. 10/11 Newark, Del. 6 pm / 2 pm FloHockey	 oct. 17/17 Newark, Del. 6 pm / 2 pm FloHockey	 oct. 24/25 Newark, Del. 6 pm / 2 pm FloHockey	 oct. 31/nov. 1 Erie, Pa. 3 pm / 1 pm FloHockey	 nov. 8/9 Providence, R.I. 3 pm / 1 pm ESPN+	 nov. 14/15 Newark, Del. 5 pm / 1 pm FloHockey
 nov. 28/29 Schenectady, N.Y. 3 pm / 1 pm ESPN+	 dec. 5/6 Rochester, N.Y. 3 pm / 2 pm FloHockey	 jan. 2/3 Syracuse, N.Y. 6 pm / 3 pm FloHockey	 jan. 8/9 Newark, Del. 6 pm / 2 pm FloHockey	 jan. 16/17 St. Charles, Mo. 4 pm / 1 pm FloHockey	 jan. 23/24 University Park, Pa. 3 pm / 2 pm Big Ten+	 jan. 30/31 Newark, Del. 6 pm / 2 pm FloHockey	 feb. 6/7 Moon Township, Pa. 3 pm / 3 pm FloHockey

*all times ET

A NEW ERA

After a nearly 18-month wait, the new era is finally here and the University of Delaware Fightin' Blue Hens are officially full members of Conference USA as of July 1, 2025. Fourteen of UD's 22 varsity programs will be housed in CUSA, with seven others joining as affiliate members in the Atlantic Sun (women's lacrosse, men's and women's swimming & diving), Atlantic 10 (men's lacrosse), Mid-American Conference (rowing), The Summit League (men's soccer), and Atlantic Hockey America (ice hockey). Field hockey will be joining Mountain Pacific Sports Federation (MPSF) for the 2025 season, joining UC Davis as one of two founding members of the league's sponsorship

An athletic department built on history and tradition, Delaware brings an abundance of success to CUSA having won 10 national championships, 172 team conference titles, 282 individual conference crowns, 342 major conference awards, 2,655 all-league selections, and 543 all-americans.

UD student-athletes complement their athletic success with strong academic performances. During the 2024-25 academic year, the Blue Hens compiled a cumulative 3.41 grade-

point average—the highest in department history, excluding academic terms impacted by COVID-19. This marked the 11th-consecutive year and the 23rd-straight semester in which UD student-athletes have posted a 3.00 GPA or better.

The move will push the Delaware brand across the nation, spanning from the northeast down into Florida, and west as far as New Mexico. However, the reach won't stop there. At least five football games will hit the national scene on CBS Sports Network/ESPN family of networks, including a non-conference tilt on FOX against Colorado. Men's and women's basketball will also have the chance to play nationally televised games as part of CUSA's media rights agreement with CBS Sports Network and ESPN.

Speaking of reach, Delaware's initial announcements about joining Conference USA reached over two billion people according to social media analytics. Put that into perspective - just over one million people live in the state of Delaware. That means these announcements reached over 2,000 Delawares.

With the announcement of Delaware football transitioning to FBS, the University was committed to adding a women's sport to continue to stay Title IX compliant. The University looked at a number of key criteria, including the feasibility, continued commitment to gender equity, recruiting footprint, conference fit, facilities, and ability to win championships.

In its due diligence, the University of Delaware performed a feasibility study funded by the Industry Growth Fund, a joint initiative of the NHL and NHLPA, with the goal of empowering schools exploring the addition of Men's and/or Women's Division I varsity ice hockey. The results of the study reinforced UD's findings and made clear that women's ice hockey was the best path forward. In addition to this being the right decision for the University of Delaware, there's also the great benefit of helping to grow a sport that is popular in this region of the country.



CONFERENCE USA SPONSORED DELAWARE SPORTS

- Baseball
- M/W Basketball
- W Cross Country/Track & Field
- Football
- M/W Golf
- W Soccer
- Softball
- M/W Tennis
- Volleyball

OTHER DELAWARE SPORTS AFFILIATIONS

- Field Hockey
- Ice Hockey
- M Lacrosse
- W Lacrosse
- MPSF
- W Rowing
- M Soccer
- M/W Swim/Dive
- Atlantic Hockey America
- Atlantic 10
- Atlantic Sun
- Mid-American
- The Summit League
- Atlantic Sun

QUICK FACTS

School.....	University of Delaware
Location.....	Newark, Del.
Founded	1743
Enrollment	24,039
Interim President.....	Laura Carlson
School Website.....	www.udel.edu
Nickname	Fightin' Blue Hens
School Colors	Blue & Gold
Athletics Website	www.bluehens.com
Interim Director of Athletics.....	Jordan Skolnick
Conference.....	Atlantic Hockey America
Website	www.atlantichockeyamerica.com

HOCKEY PROGRAM

Arena	Fred Rust Ice Arena
Capacity	1,350
First Season of Ice Hockey.....	2025-26
All-Time Record	0-0
All-Time Fred Rust Record.....	0-0
National Championships.....	0
Conference Championships.....	0
Head Coach	Allison Coomey (Niagara '02)
Career Record.....	0-0 / 1st season
Record at UD.....	same
Letterwinners Returning/Lost	0/0
Starters Returning/Lost	0/0
Newcomers.....	22
2024-25 Overall Record	0-0
2024-25 AHA Record	0-0
2024-25 AHA Finish.....	n/a
2024-25 Postseason.....	n/a

TABLE OF CONTENTS

Storylines	3-5
Program information	3
Statistical comparison.....	3
Delaware record when.....	4
Roster & Rronunications.....	6
Head coach Allison Coomey	7
Assistant coaches & support staff	8
Starters by game	9
TV roster.....	10

WHAT TO LOOK FOR...

- A win would be the first win in program history and the first victory for Delaware head coach **Allison Coomey**.
- Sixteen of Delaware's 19 skaters on the roster are looking for their first collegiate goal.
- Eighteen Blue Hens will be making their collegiate debuts when they take the ice for the first time.

22nd varsity program

Delaware announced the addition of ice hockey as the University's 22nd varsity intercollegiate program in December 2023. The addition of hockey was in conjunction with Delaware's transition to Conference USA and FBS football and UD's continued commitment to stay Title IX compliant.

45th D1 program

Delaware becomes the 45th college or university to sponsor a Division I women's ice hockey program. The Blue Hens are the first program to start at the Division I level since Assumption College started its program ahead of the 2023-24 season.

first state, first season

The inaugural season is not only the first year that UD will have a Division I program, but the Blue Hens are the first Division I ice hockey team, men or women, in the state of Delaware.

The only NHL player to have ever come from the First State is Mark Eaton, who played 13 seasons for the Philadelphia Flyers, Nashville Predators, Pittsburgh Penguins, and New York Islanders.

hockey in the south

Of the 45 Division I women's ice hockey teams in the country, the University of Delaware is the second-most southern program. Only Lindenwood in St. Charles, Missouri, also in Atlantic Hockey America (AHA), is further south.

pro relations

A pair of Blue Hens are related to professional hockey players in both the NHL and PWHL.

Freshman forward **Katelynn Charlton** is the cousin of Mikyla Grant-Mentis who currently plays for PWHL Seattle.

Assistant Coach **Melissa Samoskevich** has twin younger siblings who both play professional hockey. Her younger brother, Mackie, was a first round draft pick (24th overall) by the Florida Panthers in 2021 and has won two Stanley Cups. Her sister, Maddy, was drafted in the fifth round (39th overall) by PWHL Vancouver in 2025.

proud members of aha

Delaware is the seventh member of Atlantic Hockey America (AHA), joining fellow league members Lindenwood, Mercyhurst, Penn State, RIT, Robert Morris, and Syracuse. Formerly College Hockey America (CHA), the conference merged with the men's Atlantic Hockey Association prior to the 2024-25 season to form the AHA which now features 10 men's teams and seven women's teams.

The AHA has had alumni compete for eight countries at the Winter Olympics and skated off with 14 medals, including four gold. Professionally, several conference alumni are currently on Professional Women's Hockey League (PWHL) rosters, including three selections in the 2025 PWHL Draft in June.

STATISTICAL COMPARISON (2024-25)

Category	DEL	NCAA	AHA	LIU	NCAA	NEUHA
Scoring Offense	0.00	n/a	n/a	2.13	25th	3rd
Scoring Defense	0.00	n/a	n/a	1.68	6th	1st
Scoring Margin	0.00	n/a	n/a	0.45	19th	1st
Power-Play Pct.	.000	n/a	n/a	.185	19th	2nd
Penalty Killing Pct.	.000	n/a	n/a	.862	11th	3rd
Goals	0	n/a	n/a	81	23rd	3rd
Assists	0	n/a	n/a	120	24th	2nd
Points	0	n/a	n/a	201	23rd	2nd
Power Play Goals	0	n/a	n/a	22	11th	2nd
Shorthanded Goals	0	n/a	n/a	3	11th	2nd
Saves	0	n/a	n/a	939	25th	8th
Goals Against Average	0.00	n/a	n/a	1.662	6th	1st
Faceoff Win Pct.	.000	n/a	n/a	.514	16th	2nd
Penalty Minutes per Game	0.00	n/a	n/a	6.82	19th	5th

no stranger to starting programs

Head coach **Allison Coomey** was hired as the Blue Hens' first head coach in March 2024. She has spent the past year and a half compiling a roster and coaching staff ahead of the program's inaugural season.

This isn't the first time that Coomey has helped launch a new program. As a student-athlete, she was a member of the inaugural women's ice hockey team at Niagara University. She played four seasons for the Purple Eagles, serving as an alternate captain her senior season when Niagara advanced all the way to the 2002 NCAA Women's Frozen Four.

for the 302

Delaware is one of 11 states that are represented by one area code. Delaware is the 302, while the other states are: Alaska, Hawaii, Maine, Montana, New Hampshire, North Dakota, Rhode Island, South Dakota, Vermont, and Wyoming.

catamount connection

Delaware assistant coach **Taylor Willard** and LIU Head Coach Kelly Nash overlapped for three seasons (2014-17) at the University of Vermont. Nash was an assistant coach for the Catamounts during Willard's first three years as a student-athlete.

diverse roster

Delaware's inaugural roster features 22 student-athletes including 15 Americans from 12 states, six from Canada, and one from Norway. Only three of the 12 states represented (Massachusetts, Minnesota, Pennsylvania) are called home by more than one Blue Hen. The other nine states include Arizona, Colorado, Connecticut, Delaware, Kansas, New York, Utah, Virginia, and Wisconsin.

norwegian national

Freshman forward **Ida Haave** is a member of the Norwegian National Team. A native of Kristiansand, Norway, Haave represented her home country at the 2025 IIHF Women's World Championship in Czechia, recording one assist in four games. Norway went 1-3 in pool play, finishing fourth of five teams in Group B.

oh captain, my captains

Delaware will be led by four captains this season. Graduate student **Kaitlin Finnegan** and senior **Tiana McIntyre** will be the first Blue Hens to don the captain's "C" while juniors **Mattie Robitzer** and **Danica Mark** will serve as alternate captains.

Finnegan has appeared in 107 career games after spending her first five seasons at Lindenwood. McIntyre played 67 games over her first three seasons at Quinnipiac.

Robitzer and Mark both played two seasons at Northeastern and Union, respectively.

destined to be a blue hen

Freshman forward **Billi Roman** is not only the only Delawarean on the roster, but the only woman from the First State playing Division I hockey. Hailing from Hockessin, Roman attended The Tatnall School in Wilmington, where she suited up for the boys hockey team that played its home games at Fred Rust Ice Arena.

Roman has several relatives who attended UD, including her father and grandfather, as well as an uncle and two cousins who played for Delaware's club hockey programs.

She is the only active Division I women's ice hockey player to hail from the state of Delaware.

another first for mcintyre

Senior captain **Tiana McIntyre** is in her first season on the UD blue line after transferring from Quinnipiac. When she joined the Bobcats ahead of the 2022-23 season, McIntyre became the first women from the state of Utah to play Division I ice hockey. There has since been a second as Eden Granley will be playing for St. Anselm this season.

elevated

Senior goalie **Sydney Butler** is entering her fourth year at the University of Delaware. The wildlife ecology and conservation major spent her first three years playing for UD's women's club hockey team.

DELAWARE RECORD WHEN...

	25-26	COOMEY
Overall	0-0	0-0
Conference	0-0	0-0
Non-conference	0-0	0-0
Home	0-0	0-0
Away	0-0	0-0
Neutral	0-0	0-0
Current streak	--	--
Current home streak	--	--
Current road streak	--	--
Current neutral streak	--	--
Day game	0-0	0-0
Night game	0-0	0-0
September	0-0	0-0
October	0-0	0-0
November	0-0	0-0
December	0-0	0-0
January	0-0	0-0
February	0-0	0-0
vs. ranked opponent	0-0	0-0
Scoring first	0-0	0-0
Opponent scores first	0-0	0-0
Scoring 0-1 goals	0-0	0-0
Scoring 2 goals	0-0	0-0
Scoring 3 goals	0-0	0-0
Scoring 4+ goals	0-0	0-0
Allowing 0-1 goals	0-0	0-0
Allowing 2 goals	0-0	0-0
Allowing 3 goals	0-0	0-0
Allowing 4+ goals	0-0	0-0
Leading after 1st	0-0	0-0
Trailing after 1st	0-0	0-0
Tied after 1st	0-0	0-0
Leading at halftime	0-0	0-0
Trailing at halftime	0-0	0-0
Tied at halftime	0-0	0-0
Leading after 3rd	0-0	0-0
Trailing after 3rd	0-0	0-0
Tied after 3rd	0-0	0-0
Overtime	0-0	0-0
Shootout	0-0	0-0
Out-shooting opponent	0-0	0-0
Out-shot by opponent	0-0	0-0
Shots are even	0-0	0-0
Winning more faceoffs	0-0	0-0
Losing more faceoffs	0-0	0-0
Faceoffs are even	0-0	0-0
Taking more penalties	0-0	0-0
Taking fewer penalties	0-0	0-0
Penalties are even	0-0	0-0

IN THE RANKINGS

The University of Delaware is ranked in the top 1.6% globally, among nearly 21,000 institutions, based on educational quality, employability, faculty quality and research. In late 2024, Wall Street Journal ranked UD at No. 10 among public universities and No. 26 among all U.S. universities based on student professional readiness and career outcomes.

Physical Therapy graduate program
No. 1 in the nation
(U.S. News & World Report)

One of 24 UD graduate programs ranked in the top-100 by U.S. News

Entrepreneurship undergraduate program
No. 3 in the Mid-Atlantic
(The Princeton Review)

Chemical Engineering undergraduate program
No. 4 in the nation
(U.S. News & World Report)

One of six UD undergraduate programs ranked in the top-100 by U.S. News

Chemical Engineering graduate program
No. 8 in the nation
(U.S. News & World Report)

One of 24 UD graduate programs ranked in the top-100 by U.S. News

Online MBA program
No. 20 out of 355 in the nation
(U.S. News & World Report)

Online Master's in Education program
No. 20 out of 313 in the nation
(U.S. News & World Report)

BEST VALUE

UD ranks among the country's best value propositions, according to U.S. News & World Report, Wall Street Journal, Kiplinger's and Forbes. This summer, The Princeton Review ranked UD among its 209 Best Value Colleges for 2025, earning one of the publication's highest return-on-investment ratings. Money magazine awarded UD 4½ stars out of a possible five in its 2025-26 rating of America's best colleges. The University, according to Money, "stands out for its affordability" as a public college providing an excellent value for in-state students, and is considered one of the Best Colleges in the Northeast.

home sweet home

While Delaware will be playing its first home games in Fred Rust Ice Arena this season, a pair of Blue Hens are quite familiar with the venue. Freshman forward **Billi Roman** played her high school hockey at Fred Rust while playing for The Tatnall School. Junior goalie **Mattie Robitzer** grew up just over the Pennsylvania border in Kennett Square and often played youth hockey in Newark.

twins

The genetic trait of twins runs strong on the Blue Hens roster. Head coach **Allison Coomey** has a twin Alissa, while junior goaltender **Mattie Robitzer** also has a twin sister - Lily. Assistant coach **Melissa Samoskevich** has two younger siblings who are twins - Mackie and Maddy - who both play professional hockey.

aha connections

Several Blue Hens have strong ties to Delaware's new conference. Graduate forward and team captain **Kaitlin Finnegan** played five seasons at Lindenwood University in Missouri. Finnegan skated in 107 games for the Lions, netting seven goals and adding 16 assists. Freshman defenseman **Taylor Schooley** is the daughter of Derek Schooley, who has been the head coach of the Robert Morris men's ice hockey team since 2004.

Additionally, head coach **Allison Coomey** (2017-24) and assistant coach **Melissa Samoskevich** (2020-22) both spent time behind the bench at Penn

State.

head coaching couple

Head coach Allison Coomey is married to Delaware Women's Soccer Head Coach Kelly Lawrence, who is in her third season at the helm of the Blue Hens.

nhl partners

Shortly after announcing the addition of women's ice hockey as a varsity sport, the University of Delaware made another important announcement. In a first of its kind pairing, Delaware and the Philadelphia Flyers formed a strategic partnership aligned around growing the game of hockey, community engagement, and launching a world-class women's ice hockey program. The Blue Hens became the only NCAA Division I women's ice hockey program in the country to have a partnership with an NHL team.

Delaware ice hockey student-athletes will have access to career and professional development with the Flyers, as well as a chance to participate in the Flyers Next Shift program. The program was developed to allow women in college to shadow professional women throughout the organization on game nights. Other opportunities for internship in both business and hockey operations could happen as well.

The partnership also brings co-hosted youth hockey clinics to Fred Rust Ice Arena, the Blue Hens' home in Newark, as well as bringing the Flyers Community Caravan to UD.



2025-26 DELAWARE NUMERICAL ROSTER

#	NAME	POS.	YR.	HT.	S/C	HOMETOWN/HIGH SCHOOL (PREV. SCHOOL)
1	Mattie Robitzer	G	Jr.	5-4	L	Kennett Square, Pa. / Unionville (Northeastern)
2	Lexie Lonask	D	Fr.	5-8	R	Chandler, Ariz. / Shattuck St. Mary's [Minn.]
3	Madison Bonavita	F	Fr.	6-0	L	Longmeadow, Mass. / Milton Academy
4	Tiana McIntyre	D	Sr.	5-8	R	Park City, Utah / Park City (Quinnipiac)
5	Emma MacIntyre	D	Fr.	5-4	R	Halifax, Nova Scotia / Stanstead College
6	Kacey Blum	F	Fr.	5-6	R	McLean, Va. / McLean
8	Victoria Borg	F	Fr.	5-4	L	Burlington, Ontario / Blyth Academy
9	Bailey Gray	D	Fr.	5-4	L	Plymouth, Minn. / Benilde-St. Margaret's
10	Danica Mark	F	Jr.	5-7	R	Duluth, Minn. / Duluth Marshall School (Union)
11	Charlie Voge	F	Fr.	5-6	R	Sun Prairie, Wisc. / St. Paul's School
13	Kaitlin Finnegan	F	Gr.	5-4	R	Tecumseh, Kan. / Kansas Connections Academy (Lindenwood)
15	Wren Abboud	F	Fr.	5-2	L	Weymouth, Mass. / Thayer Academy
16	Eva Mayo	F/D	Fr.	5-6	R	Honeoye Falls, N.Y. / Kent School
17	Suvina Heidt	D	Fr.	5-6	R	Aurora, Colo. / Winchendon School [Mass.]
18	Francesca Barresi	F	Fr.	5-6	R	Ottawa, Ontario / St. Joseph Catholic
19	Katelynn Charlton	F	Fr.	5-7	L	Brampton, Ontario / St. Martins Catholic Secondary
20	Meera Smith	F	Fr.	5-6	R	Victoria, British Columbia / Shawnigan Lake School
21	Billi Roman	F	Fr.	5-3	L	Hockessin, Del. / The Tatnall School
24	Taylor Schooley	D	Fr.	5-6	L	Moon Township, Pa. / Moon Area
27	Ida Haave	F	Fr.	5-6	L	Kristiansand, Norway / Norges Toppidrettsgymnas Lillehammer
31	Charlotte Payne	G	Fr.	5-8	L	Oakville, Ontario / Abbey Park
35	Sydney Butler	G	Sr.	5-6	R	Darien, Conn. / AITE

ALPHABETICAL

#	NAME	POS.
15	Wren Abboud	F
18	Francesca Barresi	F
6	Kacey Blum	F
3	Madison Bonavita	F
8	Victoria Borg	F
35	Sydney Butler	G
19	Katelynn Charlton	F
13	Kaitlin Finnegan	F
9	Bailey Gray	D
27	Ida Haave	F
17	Suvina Heidt	D
2	Lexie Lonask	D
5	Emma MacIntyre	D
10	Danica Mark	F/D
16	Eva Mayo	F/D
4	Tiana McIntyre	D
31	Charlotte Payne	G
1	Mattie Robitzer	G
21	Billi Roman	F
24	Taylor Schooley	D
20	Meera Smith	F
11	Charlie Voge	F

GEOGRAPHICAL

Arizona (1)		
2	Lexie Lonask	D
Canada (6)		
18	Francesca Barresi	F
5	Emma MacIntyre	D
8	Victoria Borg	F
19	Katelynn Charlton	F
31	Charlotte Payne	G
20	Meera Smith	F
Colorado (1)		
17	Suvina Heidt	D
Connecticut (1)		
35	Sydney Butler	G
Delaware (1)		
21	Billi Roman	F
Kansas (1)		
13	Kaitlin Finnegan	F
Massachusetts (2)		
15	Wren Abboud	F
3	Madison Bonavita	F
Minnesota (2)		
9	Bailey Gray	D
10	Danica Mark	F
New York (1)		
16	Eva Mayo	F/D
Norway (1)		
27	Ida Haave	F
Pennsylvania (2)		
1	Mattie Robitzer	G
24	Taylor Schooley	D
Utah (1)		
4	Tiana McIntyre	D
Virginia (1)		
6	Kacey Blum	F
Wisconsin (1)		
11	Charlie Voge	F

PRO-NUN-SEE-AY-SHUNS

#1	Mattie ROBITZER	ROW-bit-zer	#18	Francesca BARRESI	buh-reh-SEE
#2	Lexie LONASK	low-NASK	#24	Taylor SCHOOLEY	school-EE
#3	Madison BONAVIDA	bawn-uh-VEE-tuh	#27	IDA HAAVE	ee-da ho-VUH
#6	Kacey BLUM	bloom	AC	Melissa SAMOSKEVICH	sam-OH-skeh-vitch
#15	Wren ABBODD	ah-BOOD			
#17	SUVINA HEIDT	seh-VEE-nuh height			

HEAR OUR NAMES



ROSTER BY CLASS

GRADUATES (1)

Kaitlin Finnegan

SENIORS (2)Sydney Butler
Tiana McIntyre**JUNIORS (2)**Danica Mark
Mattie Robitzer**FRESHMEN (17)**Wren Abboud
Francesca Barresi
Kacey Blum
Madison Bonavita
Victoria Borg
Katelynn Charlton
Bailey Gray
Ida Haave
Suvina HeidtLexie Lonask
Emma MacIntyre
Eva Mayo
Charlotte Payne
Billi Roman
Taylor Schooley
Meera Smith
Charlie Voge



THE COOMEY FILE

Hometown: Baldwinsville, N.Y.

Alma Mater: Niagara '02

Degree: Education

Master's: School Counseling

Years in Coaching: 22nd in 2025-26

NOTABLE HIGHLIGHTS

2019 AHCA Women's Hockey Assistant COY
2013 National Champ. Appearance (BU)
2011 National Champ. Appearance (BU)
2002 Niagara Team Captain
2002 Women's Frozen Four
1999 Niagara WLAX Rookie of the Year

AS DELAWARE HEAD COACH

Year	1st in 2025-26
Overall Record	0-0
Home	0-0
Away	0-0
Neutral	0-0
vs. Ranked Teams	0-0
In AHA Games	0-0

COOMEY YEAR-BY-YEAR

YEAR	W-L	PCT.	CONF
2025-26	0-0	---	0-0
TOTAL	0-0	---	0-0

First career win:

Postseason:

ALL-TIME VS OPPONENTS

Brown	0-0
Holy Cross	0-0
LIU	0-0
Lindenwood	0-0
Mercyhurst	0-0
Penn State	0-0
RIT	0-0
Robert Morris	0-0
Syracuse	0-0
Union	0-0

HEAD COACH ALLISON COOMEY

With over two decades of women's ice hockey coaching experience, the University of Delaware selected Allison Coomey to be the inaugural head coach of the women's ice hockey program on March 26, 2024.

Coomey comes to Newark after spending the past seven seasons at Penn State. She served as an assistant coach for three seasons before being promoted to associate head coach in 2020-21.

Over the course of her career, Coomey has coached four student-athletes to the Olympics, eight to national teams, four All-Americans, 15 major conference award winners, and 47 all-conference selections over her time at Penn State and Boston U.

Coomey and the Nittany Lions captured the past two league tournament titles, earning a bid to the NCAA Tournament. The team also claimed the CHA regular season title in three of the past four seasons.

Primarily responsible for coaching defense, Coomey's leadership turned the Nittany Lions into one of the best defensive units in the country by allowing just 1.88 goals per game over the past five seasons dating back to 2019-20.

Selected for various international coaching roles with USA Hockey, Coomey was on staff with the silver-medal winning USA National Team at the 2022 Beijing Olympic Games as a team scout and extension of the coaching staff. Coomey also served as the head coach for the U23 US Women's National Team in 2021 and 2022.

Coomey also spent time as an assistant coach for the USA senior national team during the 2021 IIHF World Championship. She was also a member of USA Hockey's scouting staff at the 2019 IIHF U18 Women's World Championship.

At the 2019 America Hockey Coaches Association Convention, Coomey received the AHCA Women's Hockey Assistant Coach of the Year award for her outstanding career resume.

Prior to Penn State, Coomey spent nine seasons at Boston University where she helped the Terriers qualify for the NCAA Tournament six times, including a pair of NCAA Championship appearances in 2011 and 2013. While at BU, Coomey coached four Olympians who combined to win six gold medals for the Canadian National Team at the 2010 and 2014 Winter Olympic Games.

A four-year letterwinner at Niagara, Coomey returned to her alma mater as an assistant coach from 2004-08, helping the Purple Eagles reach the CHA title game twice.

Before Niagara, Coomey served as an assistant coach at Plattsburgh in 2003-04 where she helped guide the Cardinals to the 2004 Eastern Collegiate Athletic Conference (ECAC) West Division III regular-season title and the NCAA Division III semifinals. Coomey secured her first job in the industry as an assistant women's hockey coach at Connecticut College.

The Baldwinsville, New York, native earned two degrees from Niagara, a bachelor's degree in education in 2002 and a master's degree in school counseling in 2008. She was a two-time ECAC All-Academic Team member and earned a spot on the Metro Atlantic Athletic Conference All-Academic Team.

Coomey was a two-sport letterwinner at Niagara, playing ice hockey and lacrosse from 1998-2002. On the ice, she served as an alternate captain during her senior season and helped the team to its most successful campaign in program history. The Purple Eagles reached the 2002 NCAA Women's Frozen Four and finished tied for third in the final national poll. On the lacrosse field, she earned the team's rookie of the year award.

COOMEY'S COACHING ASSIGNMENTS

YEAR	SCHOOL	POSITION
2025-Pres.	Delaware	Head Coach
2017-24	Penn State	Assistant Coach / Associate Head Coach
2008-17	Boston U.	Assistant Coach
2004-08	Niagara	Assistant Coach
2003-04	Plattsburgh	Assistant Coach
2002-03	Connecticut College	Assistant Coach

SUPERLATIVES UNDER COOMEY

Goals Scored	--	Most Goals Allowed	--
Shots	--	Fewest Opponent Shots	--
Shots on Goal	--	Fewest Opponent SOG	--
Power Play Goals	--	Most Saves	--
Shorthanded Goals	--		
Saves	--		

ASSISTANT COACHES

MELISSA SAMOSKEVICH



An IIHF World Champion with Team USA, Samoskevich joined the University of Delaware ice hockey program as its first-ever assistant coach in July of 2024.

Samoskevich came to Newark after spending the 2023-24 season as an assistant coach at Princeton.

With the Tigers, she assisted with video analysis, practice planning, drill implementation, special teams, and game management.

In the 2022-23 season, Samoskevich served as the director of player development and operations at her alma mater, Quinnipiac. The Bobcats went 30-10, making the ECAC Hockey semifinals and earning an at-large NCAA tournament bid.

Samoskevich spent the previous two seasons at Penn State with Head Coach Allison Coomey, helping the Nittany Lions to an overall record of 34-13-7 and 24-5-5 in College Hockey America.

A Sandy Hook, Connecticut native, Samoskevich scored 54 goals and added 55 assists during her undergraduate career at Quinnipiac, ranking third and fifth, respectively in school history. Her 109 points were the fourth-most in program history. Samoskevich was an ECAC Hockey All-Rookie honoree in 2016 while helping the Bobcats to the ECAC tournament title.

Following her final season at Quinnipiac, Samoskevich was named to the U.S. team for the 2019 IIHF Women's World Championship in Finland, playing in all seven games as the Americans went undefeated to win the gold medal. Samoskevich had two goals during the pool-play round, one each against Finland and Russia.

She also donned the red, white, and blue at a pair of U18 Women's World Championships. In 2014 in Hungary, she had two assists as the U.S. won silver, and in 2015 in Buffalo, the U.S. won gold with Samoskevich scoring six goals including a hat trick against Russia and two goals in a semifinal win over the Czech Republic.

After graduating from Quinnipiac in 2019 with a history degree, Samoskevich began her professional career by playing part of the 2019-20 season professionally in Sweden with Brynäs IF. Later that season, she returned to the U.S. to play first with the PWHPA's New England team and then with her home-state Connecticut Whale in the NWHL/PHF.

TAYLOR WILLARD



Willard joined the Delaware coaching staff as an assistant coach in 2025 ahead of the program's inaugural season.

Willard came to Newark after spending four seasons as an assistant coach at Norwich University where she coached 27 all-conference selections, two NEHC Rookie of the Year recipients and

Livia Brooks became the first player in program history to win NEHC Player and Rookie of the Year honors in 2023-24. The Cadets were NEHC Championship in 2022-23 to earn a berth in the NCAA Tournament and won consecutive NEHC regular season championships in 2023-24 and 2024-25. Over Willard's four seasons, Norwich either ranked or receiving votes in all but two USCHO Division III Top-15 Women's Polls.

In 2024-25, Willard guided the team's defense that ranked ninth nationally in scoring defense (1.19 goals/game) and second with 11 shutouts. She also led the penalty-killing unit that had a 92.9-percent success rate.

Willard's penalty killers set a program record in 2023-24 by killing 95.3-percent of penalties, which led the entire nation. The scoring defense (0.93) was second in the country, and recorded 10 team shutouts.

Willard began her coaching career as a volunteer assistant coach for two seasons at her alma mater, the University of Vermont, helping lead the Catamounts to back-to-back Hockey East Quarterfinal appearances.

A two-time team captain at Vermont, Willard ranks among the program's top 10 for career games played (145), points (62), assists (41) and power-play goals (12). Her 62 points was the most by a Vermont defenseman.

Willard was a two-time Hockey East Second Team All-Star (2015-16, 2016-17) and an honorable mention all-star in 2017-18. She was named to the New England Hockey Writers Association Division I All-Star (2016-17). Willard also won the 2018 Sarah Devens Award, presented annually to a player who "demonstrates leadership and commitment on and off the ice."

Willard played professionally for the Montreal Canadiens (2018-19) in the Canadian Women's Hockey League. She registered seven points (two goals, five assists) in 26 games. Willard was also a member of Team USA at the 2013 U18 Women's World Championships where she picked up three assists in five games and won a silver medal.

MICHEL LAROCQUE



Larocque joined the University of Delaware in August 2025 ahead of the program's inaugural season as the team's volunteer goalie coach.

A USA Hockey Level 5 Certified Coach and Gold Level Goaltending Coach, Larocque has run his own goaltender training

company – ML28 Hockey – since 2001. He has worked with goalies of all levels as a regional goalie coach for club and scholastic programs as well as organizing camps, clinics and private lessons across multiple age ranges.

Larocque had a distinguished collegiate career at Boston University where he played 97 career games from 1995 to 1999, helping lead the Terriers to the 1997 Hockey East championship, four-straight Beanpot titles, and three NCAA Tournament appearances including an appearance in the 1997 national championship game where he made 24 saves. Larocque was a two-time All-Hockey East selection and was an All-American in 1999 as well as a Hobey Baker finalist. He also was the 1997 Hockey East Tournament MVP and selected to the 1996 Hockey East All-Rookie Team.

Originally drafted by the San Jose Sharks in the sixth round of the 1996 NHL Draft, Larocque was traded to the Chicago Blackhawks in 1999. He made his NHL debut in 2001 against Philadelphia and played in three games for the Blackhawks.

SUPPORT STAFF

Jack Davis

Devon Cummings

Alex Davisson

Dr. Clare Devine

Sport Administrator

Academic Advisor

Athletic Trainer

Sport Psychologist

Austin Mark

Jake Prettyman

Brendan Thomas

Kate Winstanley

Team Nutritionist

Equipment Manager

Athletic Communications

Strength & Conditioning Coach

delaware

STARTERS BY GAME

LEFT WING

CENTER

RIGHT WING

LEFT DEFENSE

RIGHT DEFENSE

GOALIE

LIU

LIU

Holy Cross

Holy Cross

Penn State

Penn State

Syracuse

Syracuse

Robert Morris

Robert Morris

@ Mercyhurst

@ Mercyhurst

@ Brown

@ Brown

Lindenwood

Lindenwood

@ Union

@ Union

@ RIT

@ RIT

@ Syracuse

@ Syracuse

RIT

RIT

@ Lindenwood

@ Lindenwood

@ Penn State

@ Penn State

Mercyhurst

Mercyhurst

@ Robert Morris

@ Robert Morris

delaware TV ROSTER



1
MATTIE ROBITZER
Jr.
G | 5-4
Kennett Square, Pa.
Unionville
(Northeastern)



2
LEXIE LONASK
Fr.
D | 5-8
Chandler, Ariz.
Shattuck St. Mary's



3
MADISON BONAVITA
Fr.
F | 6-0
Longmeadow, Mass.
Milton Academy



4
TIANA MCINTYRE
Sr.
D | 5-8
Park City, Utah
Park City
(Quinnipiac)



5
EMMA MACINTYRE
Fr.
D | 5-4
Halifax, Nova Scotia
Stanstead College



6
KACEY BLUM
Fr.
F | 5-6
McLean, Va.
McLean



8
VICTORIA BORG
Fr.
F | 5-4
Burlington, Ontario
Blyth Academy



9
BAILEY GRAY
Fr.
D | 5-4
Plymouth, Minn.
Benilde-St. Margaret's



10
DANICA MARK
Jr.
F | 5-7
Duluth, Minn.
Duluth Marshall School
(Union)



11
CHARLIE VOGUE
Fr.
F | 5-6
Sun Prairie, Wisc.
St. Paul's School



13
KAITLIN FINNEGAN
Gr.
F | 5-4
Tecumseh, Kan.
Kansas Connections Academy
(Lindenwood)



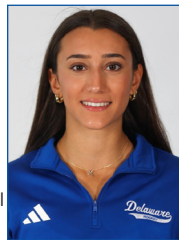
15
WREN ABBODD
Fr.
D | 5-2
Weymouth, Mass.
Thayer Academy



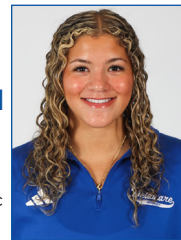
16
EVA MAYO
Fr.
F/D | 5-6
Honeoye Falls, N.Y.
Kent School



17
SUVINA HEIDT
Fr.
D | 5-6
Aurora, Colo.
Winchendon School



18
FRANCESCA BARRESI
Fr.
F | 5-6
Ottawa, Ontario
St. Joseph Catholic



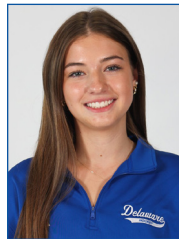
19
KATELYNN CHARLTON
Fr.
F | 5-7
Brampton, Ontario
St. Martins Catholic



20
MEERA SMITH
Fr.
F | 5-6
Victoria, B.C.
Shawnigan Lake School



21
BILLI ROMAN
Fr.
F | 5-3
Hockessin, Del.
The Tatnall School



24
TAYLOR SCHOOLEY
Fr.
D | 5-6
Moon Township, Pa.
Moon Area



27
IDA HAAVE
Fr.
F | 5-6
Kristiansand, Norway
Lillehammer



31
CHARLOTTE PAYNE
Fr.
G | 5-8
Oakville, Ontario
Abbey Park



35
SYDNEY BUTLER
Sr.
G | 5-6
Darien, Conn.
AITE



**ALLISON
COOMEY**

Head Coach
1st Season
Niagara '02



**MELISSA
SAMOSKEVICH**

Assistant Coach
1st Season
Quinnipiac '19



**TAYLOR
WILLARD**

Assistant Coach
1st Season
Vermont '18



**MICHEL
LAROCQUE**

Vol. Goalie Coach
1st Season
Boston U. '99