



DELAWARE FIGHTIN' BLUE HENS

FIELD HOCKEY GAME NOTES

a new era. 



Noah Barraclough, Assistant Director, Communications & Creative Services | 484-877-6149 | noahcb@udel.edu

SERIES HISTORY

All Time	12-15
Streak	L3
At Home	6-8
On the Road	6-7
Largest Win	W, 4-1 - 11/1/92
Largest Loss	L, 6-0 - 9/25/22
Last Win	W, 4-3 - 10/1/21
Last Loss	L, 1-0 (OT) - 10/6/24

HOW TO FOLLOW

TV/Stream	ESPN+
Live Stats	bluehensstats.livestats.us
X/Instagram	@Delaware_FH

WHO ARE WE

Only refer to our institution as the University of Delaware or UD. Do not use "U of D," "UofD," "the U of D" or "UDel." Do not use periods in "UD."

We are the Fightin' Blue Hens on first reference and Blue Hens, Hens, or Blue & Gold after that.

MEDIA RELATIONS

For interview requests for field hockey players or coaches, please contact Noah Barraclough, Assistant Director of Communications & Creative Services
Emailnoahcb@udel.edu
Number.....484-877-6149

DELAWARE (3-4)

GM
7

#15 SAINT JOSEPH'S (4-3)



Head Coach: Tara Zollinger
Record at UD: 3-4 (First year)
Career Record: 121-29 (8 years)
Last: W, 4-0 at Lock Haven



Head Coach: Hannah Prince
Record at SJU: 56-17 (4th year)
Career Record: same
Last: L, 2-0 vs Louisville

wednesday, september 24, 2025 | 4 pm | merion station, pa. | ellen ryan field (200) | espn+

OPENING PASS

Delaware Fightin' Blue Hens field hockey travels to Merion Station, Pa. for its third away game in Pennsylvania this season.

The Blue Hens are coming off of a 4-0 win against Lock Haven. **GK Kristi Merashoff** recorded a shutout and three saves, while **F Alexa Michielsens** matched a career-high of four points to help the Hens cruise to victory.

Michielsens and Merashoff earned MPSF Offensive and Defensive Player of the Week honors, respectively, for their performances over Delaware's two games against Northwestern and Lock Haven.

The defending runner-up Hawks, picked up a conference win against Saint Louis by a score of 3-0, but fell to Louisville in their past weekend slate.

The Hawks have pulled out four wins, despite scoring eight goals on the season, playing tactically as Paige Kieft has been a stalwart in the cage with a 0.82 goals against average.

On offense for the Hawks, Ava Smith leads the way with three scores, alongside her, Adele Jardimar has dished out three assists.

Delaware and Saint Joseph's faced off in an overtime thriller last season, with the Hawks prevailing 1-0 in the 67th minute.

SEASON LEADERS



points

10 points

iris bekker, kate fiest



goals

4 goals

iris bekker



assists

4 assists

kate fiest



defensive

saves
2 defensive
saves

tetje williamson

2025 SCHEDULE

 aug. 29 L, 5-4	 aug. 31 L, 5-4	 sept. 5 L, 3-2 (2OT)	 sept. 12 W, 2-0	 sept. 14 W, 3-1	 sept. 19 L, 4-0	 sept. 21 W, 4-0	 sept. 24 Merion Station, Pa ESPN+ 4 PM	 sept. 26 Newark, Del. YouTube 3 PM	 sept. 28 Newark, Del. YouTube 1 PM	 oct. 3 Towson, Md. FloSports 3 PM	 oct. 5 Philadelphia, Pa. FloSports noon					
<p>*all times ET</p>																
<table><tr><td> oct. 12 Winston Salem, NC TBA noon</td><td> oct. 19 Newark, Del. YouTube noon</td><td> oct. 26 Newark, Del. YouTube 2 PM</td><td> oct. 31 Newark, Del. YouTube 5 PM</td><td> nov. 2 Philadelphia, Pa. TBA 1 PM</td></tr></table>												 oct. 12 Winston Salem, NC TBA noon	 oct. 19 Newark, Del. YouTube noon	 oct. 26 Newark, Del. YouTube 2 PM	 oct. 31 Newark, Del. YouTube 5 PM	 nov. 2 Philadelphia, Pa. TBA 1 PM
 oct. 12 Winston Salem, NC TBA noon	 oct. 19 Newark, Del. YouTube noon	 oct. 26 Newark, Del. YouTube 2 PM	 oct. 31 Newark, Del. YouTube 5 PM	 nov. 2 Philadelphia, Pa. TBA 1 PM												

A NEW ERA

The University of Delaware field hockey program will be joining Mountain Pacific Sports Federation (MPSF) for the 2025 season, joining UC Davis as one of two founding members of the league's sponsorship, the organizations announced jointly on September 2. This will be the newest field hockey NCAA DI conference since the Northeast Conference formed in 1998.

A program with rich tradition and history, Delaware enters MPSF after claiming its 10th Coastal Athletic Association (CAA) Championship in the last 12 seasons in 2024. Overall, UD has won 16 league crowns since the program's inception in 1971. The Blue & Gold have appeared in 17 NCAA/AIAW Tournament appearances, highlighted by a NCAA National Championship in 2016.

"We are thrilled to give our student-athletes the chance to compete in a new conference and the opportunity to compete for a league title," Interim Director of Athletics Jordan Skolnick said. "We are thankful to MPSF, Commissioner Foti Mellis and co-founding member UC Davis for joining us in creating this opportunity for our student-athletes. Our field hockey program has been and will continue

to be one of our most nationally competitive teams at Delaware. Finding a path forward towards a conference has been critically important and creating a new conference gives us the ability to work towards once again being in a league with an automatic bid to the NCAA tournament."

Field hockey makes the record-setting 16th current intercollegiate olympic sport for the conference, exceeding the previous all-time high of 15 during the 2024-25 academic year. Field hockey is the seventh sport to be added to the MPSF in Commissioner Foti Mellis' tenure since the fall of 2021, four of which debuted last year. The conference champion will be decided by the winner of the championship contest between the two teams, hosted by UC Davis in November.

"We are excited to join the MPSF in the inaugural year of sponsoring field hockey," Delaware Head Field Hockey Coach Tara Zollinger said. "Alongside UC Davis, we are eager to compete and grow our conference while providing access to a conference championship for our deserving student-athletes."

Mountain Pacific Sports Federation, University of Delaware, and UC Davis

will work together to attempt to get to six members for the 2026 season, the minimum needed to qualify for an automatic bid to the NCAA tournament. The group hopes to attract teams from universities interested in starting field hockey programs, and from institutions who want their student-athletes to have a chance to compete for a conference championship and an automatic bid, as many conferences do not invite all member teams to compete in their conference tournament. MPSF plans to have all six teams compete in their conference tournament annually.

The MPSF Championship game against UC Davis will take place on November 8, and will be the first-ever matchup between the two schools.



USA SPONSORED DELAWARE SPORTS

- Baseball
- M/W Basketball
- W Cross Country/Track & Field
- Football
- M/W Golf
- W Soccer
- Softball
- M/W Tennis
- Volleyball

OTHER DELAWARE SPORTS AFFILIATIONS

- | | | | |
|----------------|-----------------|-----------------|-------------------|
| - Field Hockey | MPSF | - W Lacrosse | Atlantic Sun |
| - W Ice Hockey | Atlantic Hockey | - W Rowing | Mid-American |
| | America | - M Soccer | The Summit League |
| - M Lacrosse | Atlantic 10 | - M/W Swim/Dive | Atlantic Sun |

QUICK FACTS

School.....	University of Delaware
Location.....	Newark, Del.
Founded	1743
Enrollment	24,039
Interim President.....	Laura Carlson
Interim Director of Athletics.....	Jordan Skolnick
School Website.....	www.udel.edu
Nickname.....	Fightin' Blue Hens
School Colors	Blue & Gold
Athletics Website	www.bluehens.com

FIELD HOCKEY PROGRAM

Stadium.....	Fred P. Rullo Jr. Stadium
Surface	Artificial Turf
Capacity	2,000
First Season of Field Hockey.....	1971
All-Time Record	622-392-39
All-Time Rullo Stadium Record.....	157-105
National Championships.....	1, (2016)
Conference Championships.....	16 (2024)
Head Coach.....	Tara Zollinger (Maryland '13)
Career Record.....	121-29 / 8 seasons
Record at UD.....	3-4
2024 Record.....	19-2 (at Shippensburg)
Letterwinners Returning/Lost.....	12/11
Starters Returning/Lost.....	
Field Players.....	5/5
Goalkeepers.....	0/1
Newcomers.....	13
2024 Overall Record	12-10
2024 CAA Record.....	3-3
2024 CAA Finish.....	3rd, won CAA Tournament
2024 Postseason.....	NCAA Second Round

TABLE OF CONTENTS

A New Era	2
Quick Facts, Program History.....	3
Storylines	3-5
Current Streaks.....	4
Delaware Record When.....	5
Zollinger All-Time vs. Opponents.....	5
Roster + Pronunciations.....	6
Roster by Class & Geography.....	7
Tara Zollinger's Bio.....	8
Assistant Coaches & Support Staff.....	9
Coaches in College.....	10
Starters by Game.....	11
Miscellaneous Information.....	12
Weekly Statistical Leaders.....	13
Scoring Plays	13
Season Statistics.....	14
NCAA Statistics.....	15
TV Rosters.....	16-17

WHAT TO LOOK FOR...

- A win would earn the Blue Hens their first win over Lock Haven since 1980.
- A goal for Iris Bekker would tie her career high of five, set in 2024.

new conference, who dis?

On Tuesday, September 2, Delaware announced their new affiliation for field hockey to compete in the Mountain Pacific Sports Federation (MPSF). The Fightin' Blue Hens jointly founded the league with UC Davis, who they will face in a conference championship game on November 8, 2025. Mountain Pacific Sports Federation, University of Delaware, and UC Davis will work together to attempt to get to six members for the 2026 season.

new hen in the flock

Tara Zollinger was hired in March 2025 to be the seventh head coach in program history. She won three DII National Championships at Shippensburg, and made the semifinal game in all six of her NCAA Tournament appearances. Zollinger coached to a record of 118-25 (.825), producing 41 all-league players, and 23 All-Americans in her time with the Raiders.

both blankin' em

Both goalkeepers that the Blue Hens roster in 2025 have now picked up shutouts. This is the first time since 2018 that multiple goalies have shutout opponents in a season. **Kristi Merashoff** shut down Lock Haven, while **Gabby Prentice** held Kent State scoreless. The last duo to do this was **Lizzie Gaebel** and **Sydney Rhodes**. The latter of whom has assisted in goalie development as a volunteer assistant this season.

that's mine now, thanks

In her return to the cage against Northwestern, **GK Kristi Merashoff**, stopped 10 shots, a career-high.

heck of a history

Delaware has faced Saint Joseph's six times while the Hawks have been ranked. The Hens are 1-5, with a win coming in 2021 in a 4-3 overtime victory.

trailblazers

In the first three inaugural weekends of MPSF Field Hockey action, the Blue Hens had four different players earn Player of the Week awards. **Iris Bekker** repeated as the Defensive Player of the Week, while **Kate Fiest** earned the laurel on offense. Bekker netted a goal and saved a shot, while Fiest scored once and assisted on two goals across Delaware's two wins. **Alexa Michielsen** picked up the honor in the first and third week of action. **Kristi Merashoff** picked up her first weekly honor as a Blue Hen after a 13 save weekend.

back to the roots

Fourteen years ago on September 24, Delaware played in the first ever game at Ellen Ryan Field, the location of Wednesday's contest. The Blue Hens pulled out a 5-4 victory.

getting on the board

Lily Cosner picked up her first career goal against Lock Haven to start the scoring for the Hens.

2025 STATISTICAL COMPARISON

Category	DEL	NCAA	MPSF	SJU	NCAA	A10
Assists Per Game	2.71	20th	1st	0.86	66th	6th
Defensive Saves	4	4th	1st	1	29th	5th
Goals Against Average	2.47	59th	2nd	0.81	6th	1st
Goals Per Game	2.71	29th	1st	1.14	69th	6th
Penalty Corners Per Game	5.86	37th	1st	9.00	5th	1st
Points Per Game	8.14	24th	1st	3.14	69th	6th
Save Percentage	--	--	--	0.786	11th	4th
Saves Per Game	2.86	70th	2nd	3.14	61st	6th
Scoring Average	2.61	30th	1st	1.08	73rd	6th
Scoring Margin	0.14	50th	1st	0.27	44th	5th
Shutouts Per Game	0.29	19th	1st	0.43	8th	1st
Winning Percentage	0.429	44th	2nd	0.571	31st	3rd

first one done

Head coach Tara Zollinger picked up her first win at Delaware in the Blue Hens' win over Kent State on September 12.

around the world

The Hens roster includes five international student-athletes this season, including four from The Netherlands. B **Linde van Leeuwen**, B **Iris Bekker**, M/F **Alexa Michiels**, and F **Livia van't Hek** hail from The Netherlands. While freshman M/F **Charlotte Robertson** is from Edinburgh, Scotland.

portal combat

The Hens' coaching staff recruited four players out of the transfer portal this offseason. B **Linde van Leeuwen** (Bryant), M/F **Ashlee Bucksar** (Liberty), M/F **Alexa Michiels** (Shippensburg), and GK **Kristi Merashoff** (Northeastern) all join the squad after spending the 2024 season at another institution. B **Iris Bekker** returns for her second season after transferring in from Kent State.

bringing some friends along

Head coach **Tara Zollinger** brought her assistant coach from Shippensburg in **Ally Mooney** to the 302 to coach the goalkeepers. Mooney played for Zollinger from 2017-18, where the pair won two national championships. Graduate M/F **Alexa Michiels** joined the Fightin' Blue Hens after three seasons at Shippensburg, where she played in 40 games, scoring 10 goals. She earned All-PSAC Third Team honors and was the 2024 PSAC Field Hockey Tournament MVP.

family ties

Delaware field hockey has become a family affair over the years. Many sisters and mother-daughter pairs have suited up in the blue & gold over the programs 55 seasons. The Blue Hens have four such duos across the 2025 roster.

M **Tetje Williamson** is the daughter of **Kelly Cawley** '99, a Delaware Athletics Hall of Famer who ranks second in all-time points.

M **Emma Miller** is the sister of **Grace Miller**, a 2022 graduate who played in 71 games, earning all-conference second team honors her senior year.

M **Sarah Rigual's** sister, **Morgan Rigual**, made 68 appearances for Delaware. She graduated in 2023, assisting the Blue Hens to the NCAA Tournament three times.

Volunteer Assistant Coach **Sydney Rhodes-James** and her twin sister, **Sabrina**, shared the field in 2016 and 2017, winning an NCAA Championship in Sydney's freshman season.

elite company

Tara Zollinger currently holds the fifth-highest active winning percentage in the NCAA of a coach in their second year or higher (.807), and is third amongst the highest amongst active coaches who have coached at least 100 games (Brooke Good - DIII Messiah University, Sharon Pflueger - DIII TCNJ).

preseason plaudit

M **Kate Fiest** earned a spot on the 2025 NFHCA Preseason Watchlist, the organization announced August 28.

CAREER GAMES/STARTS

Back	Games	Starts
Cameron Medinger	66	64
Iris Bekker	65	64
Lily Cosner	28	15
Linde van Leeuwen	24	22
Elle Patterson	9	0

Midfield	Games	Starts
Emma Miller	57	19
Alexa Michiels	46	21
Rachael Whitehead	46	44
Kate Fiest	46	35
Sarah Rigual	42	14
Tetje Williamson	35	10
Katie Clarke	7	5
Ella Cellini	7	0
Brynn String	7	0

Forward	Games	Starts
Noelle Sabbagh	62	49
Amanda Rattay	7	1
Lainey Baker	21	0
Izzy Rothwell	12	0
Livia van't Hek	7	0
Charlotte Robertson	3	0

Goalkeeper	Games	Starts
Kristi Merashoff	42	38
Gabby Prentice	4	3

CURRENT STREAKS

	Consecutive GP/GS	Pos
Iris Bekker	65/64	B
Noelle Sabbagh	50/8	F
Rachael Whitehead	46/35	M/B
Kate Fiest	46/9	M
Sarah Rigual	40/10	M
Alexa Michiels	33/11	M/F
Emma Miller	29/7	M
Lily Cosner	28/0	
Linde van Leeuwen	24/6	B
Cameron Medinger	13/7	B
Katie Clarke	7/2	M
Tetje Williamson	7/0	
Ella Cellini	7/0	
Livia van't Hek	7/0	
Amanda Rattay	7/0	
Brynn String	7/0	
Kristi Merashoff	2/2	GK

ON THIS DATE IN DELAWARE FIELD HOCKEY HISTORY...

SEPT
24

Delaware is 7-7 in games played on September 24, with wins coming over Hofstra, Penn State, Princeton, Saint Joseph's, Temple, and West Chester.

On September 24, 2011, 14 years to the day of this contest, the Fightin' Blue Hens pulled out a 5-4 victory in the first game at Ellen Ryan Field over St. Joe's. Taylor Claybrook scored two goals in the game.

DELAWARE RECORD WHEN...

	2025	ZOLLINGER
Overall	3-4	2-4
Conference	0-0	0-0
Non-conference	3-4	2-4
Playoffs	--	--
Home	2-3	2-3
Away	1-1	0-1
Neutral	0-0	0-0
Current streak	W1	L1
Current home streak	L1	L1
Current road streak	W1	L1
Current neutral streak	--	--
Day game	2-4	1-4
Night game	1-0	1-0
August	0-2	0-2
September	3-2	2-2
October	0-0	0-0
November	0-0	0-0
vs. Top 5 teams	0-1	0-1
vs. Top 10 teams	0-0	0-0
vs. Top 25 teams	0-1	0-1
vs. unranked teams	3-2	2-2
On natural grass	0-0	0-0
On artificial surface	3-4	2-4
Scoring first	3-1	2-1
Opponent scores first	0-3	0-3
Leading after 1st	1-1	0-1
Trailing after 1st	0-2	0-2
Tied after 1st	2-1	2-1
Leading at halftime	3-1	2-1
Trailing at halftime	0-2	0-2
Tied at halftime	0-1	0-1
Leading after 3rd	3-1	2-1
Trailing after 3rd	0-2	0-2
Tied after 3rd	0-1	0-1
Overtime	0-1	0-1
Shootout	0-0	0-0
Scoring 0 goals	0-1	0-1
Scoring 1 goal	0-0	0-0
Scoring 2 goals	1-1	1-1
Scoring 3+ goals	2-2	1-2
Allowing 0 goals	2-0	1-0
Allowing 1 goal	1-0	1-0
Allowing 2 goals	0-0	0-0
Allowing 3+ goals	0-4	0-4
Game decided by 1	0-3	0-3
Game decided by 2	2-0	2-0
Game decided by 3+	1-1	0-1
With 1-5 shots	0-1	0-1
With 6-10 shots	0-1	0-1
With 11-15 shots	2-1	1-1
With 16-20 shots	1-1	1-1
With 21+ shots	0-0	0-0
Allowing 1-5 shots	1-0	1-0
Allowing 6-10 shots	2-1	1-1
Allowing 11-15 shots	0-0	0-0
Allowing 16-20 shots	0-2	0-2
Allowing 21+ shots	0-1	0-1
Leading in shots	3-1	2-1
Trailing in shots	0-3	0-3
Tied in shots	0-0	0-0
Leading in corners	2-2	1-2
Trailing in corners	0-2	0-2
Tied in corners	1-0	1-0
Leading in saves	0-2	0-2
Trailing in saves	3-2	2-2
Tied in saves	0-0	0-0
Received yellow card	1-3	1-3
Opp. received yellow	1-2	1-2
Received red card	0-0	0-0
Opp. received red card	0-0	0-0
Black on black uniform	1-0	1-0
Blue on blue uniform	1-3	1-2
White on white uniform	1-1	0-1

they're baaaaaack

Kate Fiest and Cameron Medinger return to UD after earning all-conference honors. Fiest recieved First Team All-CAA, while Medinger earned a second team nod.

destined to be a hen

Blue Hens Head Coach **Tara Zollinger** was coached by **Missy Meharg '85** as an undergraduate at the University of Maryland and took her first collegiate coaching job under **Ange Bradley '89** at Syracuse in 2013.

familiar (masked) face

GK **Kristi Merashoff** joined the Fightin' Blue Hens for her final season of collegiate action and to pursue a master's degree in Business Analytics & Information Management. Previously, she was the goalie at former Coastal Athletic Association (CAA) foe, Northeastern. Merashoff won both games she was in the cage for against Delaware in her career, saving 15-of-17 shots on goal (.882).

back home

Delaware hired volunteer assistant coach **Sydney Rhodes-James** in July. The program alum returns to Newark after four seasons as an assistant coach at Penn. Rhodes-James appeared in 50 games in goal at Delaware, including nine in 2016, the year in which the Blue Hens captured the national championship.

TEAM RECORDS

Most goals scored in a game	8/28/15
10, twice	at Central Michigan
Most assists in a game	8/28/15
10	at Central Michigan
Most Points in a game	8/28/15
30, 10 goals, 10 assists	at Central Michigan

INDIVIDUAL RECORDS TO KNOW

Most goals scored in a game	9/6/09
5, Casey Howard, vs Brown	
Most assists in a game	11/8/19
Three with 3, Femke Strein vs. JMU	
Most Points in a game	9/6/09
12, Casey Howard, vs Brown	
Most Saves in a game	9/13/94
28, Kim Lockbaum, vs. Maryland	

LAST TIME A BLUE HEN...

Multiple goals in a game	11/10/24
Valentina Martorell, at Monmouth	
Hat trick in a game	9/3/23
Kiki Oudshoorn vs. Columbia	
Scored on a penalty stroke	8/31/25
Iris Bekker vs. California	
Had multiple assists in a game	9/12/15
Kate Fiest & Sarah Rigual vs Kent St.	
Had three assists in a game	11/6/22
Berber Bakermans vs. Drexel	
5 points in a game	8/31/25
Iris Bekker vs. California	
6 points in a game	9/3/23
Kiki Oudshoorn vs. Columbia (6)	
8 points in a game	11/8/19
Lotte de Koning vs. James Madison	
8 shots in a game	10/6/23
Julia Duffhuis vs. Northeastern	
Multiple defensive saves in a game	9/22/24
Cameron Medinger at American	
10 saves in a game	11/15/24
Cecile van Eijck at UNC (17)	
Solo GK shutout	9/21/25
Kristi Merashoff at Lock Haven	

ZOLLINGER ALL-TIME VS DI OPPONENTS

American	0-0	Ohio State	0-0	William & Mary	0-0
Bucknell	1-0	Old Dominion	0-0		
Cal	0-1	Penn	0-0		
Drexel	0-0	Penn State	0-1		
Kent State	1-0	Saint Joseph's	0-0		
Lafayette	0-0	Temple	0-1		
Lock Haven	1-0	Wake Forest	0-0		
Northwestern	0-1	Towson	0-0		

2025 DELAWARE NUMERICAL ROSTER

#	NAME	YR.	POS.	HT.	HOMETOWN/HIGH SCHOOL (PREV. SCHOOL)
1	Lily Cosner	So.	B	5-2	Doylestown, Pa. / Central Bucks West
2	Emma Miller	Sr.	M	5-6	Mount Joy, Pa. / Donegal
3	Rachael Whitehead	Jr.	M	5-9	Hockessin, Del. / The Tatnall School
4	Cameron Medinger	Sr.	B	5-7	Baltimore, Md. / Garrison Forrest School
5	Amanda Rattay	Fr.	F	5'6	Newark, Del. / Newark Charter
6	Tetje Williamson	Jr.	M	5-4	Oley, Pa. / Oley Valley
7	Linde van Leeuwen	So.	B	5'6	Heemstede, Netherlands / Lyceum Sancta Maria (Bryant)
8	Iris Bekker	Sr.	B	5-8	Zuidlaren, Netherlands / GHHC Groningen (Kent State)
10	Ella Cellini	Fr.	M	5'5	Phoenixville, Pa. / Villa Maria Academy
11	Elle Patterson	Jr.	B	5-7	Ashburn, Va. / Independence
12	Charlotte Robertson	Fr.	M/F	5'6	Edinburgh, Scotland / Millfield School
13	Ashlee Bucksar	Jr.	M/F	5'7	North Wales, Pa. / William Penn Charter (Liberty)
14	Brynn String	Fr.	M	5'7	Felton, Del. / Lake Forest
15	Sarah Rigual	Jr.	M	5-3	Fredericksburg, Va. / James Monroe
17	Kate Fiest	Jr.	M	5-6	Yorktown, Va. / Tabb
18	Livia van't Hek	Fr.	F	5'8	Amsterdam, The Netherlands / St. Nicolasslyceum
19	Carmella Gannon	Fr.	M	5'9	Felton, Del. / Lake Forest
20	Izzy Rothwell	Sr.	F	5-7	Sparks, Md. / The Bryn Mawr School
21	Alexa Michielsen	Gr.	M/F	5-4	Bloemendaal, Netherlands / Intl. School of Amsterdam (Shippensburg)
22	Noelle Sabbagh	Sr.	F	5-3	Lewes, Del. / Cape Henlopen
23	Kasey Rieger	Fr.	F	4'11	Langhorne, Pa. / Neshaminy
24	Katie Clarke	Fr.	M	5'8	Purcellville, Va. / Loudoun Valley
25	Lainey Baker	Sr.	F	5-7	Louisville, Ky. / Sacred Heart Academy
86	Gabby Prentice	Fr.	GK	5'8	Arnold, Md. / Archbishop Spalding
99	Kristi Merashoff	Gr.	GK	5'6	Towson, Md. / Towson HS (Northeastern)

Head Coach: Tara Zollinger (Maryland '13) - first season at UD, eighth overall

Assistant Coach: Ally Mooney (Shippensburg '18) - first season

Assistant Coach: Devin Kinzel (Temple '24) - first season

Volunteer Assistant Coach: Sydney Rhodes-James (Delaware '19) - first season

ALPHABETICAL

#	NAME	POS.
25	Lainey Baker	F
8	Iris Bekker	B
13	Ashlee Bucksar	M/F
10	Ella Cellini	M
24	Katie Clarke	M
1	Lily Cosner	B
17	Kate Fiest	M
19	Carmella Gannon	M
18	Livia van't Hek	F
7	Linde van Leeuwen	B
4	Cameron Medinger	B
99	Kristi Merashoff	GK
21	Alexa Michielsen	M/F
2	Emma Miller	M
11	Elle Patterson	B
86	Gabby Prentice	GK
5	Amanda Rattay	F
23	Kasey Rieger	F
15	Sarah Rigual	M
12	Charlotte Robertson	M/F
20	Izzy Rothwell	F
22	Noelle Sabbagh	F
14	Brynn String	M
3	Rachael Whitehead	M
6	Tetje Williamson	M

PRO-NUN-SEE-AY-SHUNS

PLAYERS & COACHES

#4	Cameron Medinger	med-in-GRR
#5	Amanda Rattay	RUH-tay
#6	Tetje Williamson	TAT-chee
#7	Linde van Leeuwen	linda von lay-WIN
#8	Iris Bekker	EE-ris
#15	Sarah Rigual	rig-AL
#17	Kate Fiest	like feisty
#18	Livia van't Hek	LIV-ya von tek
#21	Alexa Michielsen	meek-YULE-son
#22	Noelle Sabbagh	SUH-bahh
#23	Kasey Rieger	RIGOR
#99	Kristi Merashoff	MARE-uh-shoff

HC	Tara Zollinger	zoll-in-GRR
AC	Ally Mooney	moon-EE
AC	Devin Kinzel	kin-zell

TOWNS

Hockessin	HO-kess-in
Oley	ol-EE
Heemstede	heem-STED
Zuidlaren	ZOW-d-lard-in
Bloemendaal	BLUE-min-doll
Lewes	LOU-is

HEAR OUR NAMES



2025 DELAWARE ROSTER BREAKDOWN

BACKS (5)

1	Lily Cosner	B	So.	5-2	Doylestown, Pa. / Central Bucks West
4	Cameron Medinger	B	Sr.	5-7	Baltimore, Md. / Garrison Forest School
7	Linde van Leeuwen	B	So.	5-6	Heemstede, Netherlands / Lyceum Santa Maria (Bryant)
8	Iris Bekker	B	Sr.	5-8	Zuidlaren, Netherlands / GHHC Groningen (Kent State)
11	Elle Patterson	B	Jr.	5-7	Ashburn, Va. / Independence

FORWARDS (6)

5	Amanda Rattay	F	Sr.	5-6	Newark, Del. / Newark Charter
18	Livia van't Hek	F	So.	5-8	Amsterdam, Netherlands / St. Nicolaaslyceum
20	Izzy Rothwell	F	Sr.	5-7	Sparks, Md. / The Bryn Mawr School
22	Noelle Sabbagh	F	Sr.	5-3	Lewes, Del. / Cape Henlopen
23	Kasey Rieger	F	Fr.	4-11	Langhorne, Pa. / Neshaminy
25	Lainey Baker	F	Sr.	5-7	Louisville, Ky. / Sacred Heart Academy

MIDFIELDERS (12)

2	Emma Miller	M	Sr.	5-5	Mount Joy, Pa. / Donegal
3	Rachael Whitehead	M	Jr.	5-9	Hockessin, Del. / The Tatnall School
6	Tetje Williamson	M	Jr.	5-4	Oley, Pa. / Oley Valley
10	Ella Cellini	M	Fr.	5-5	Phoenixville, Pa. / Villa Maria Academy
12	Charlotte Robertson	M/F	Fr.	5-6	Edinburgh, Scotland / Millfield School
13	Ashlee Bucksar	M/F	Jr.	5-7	Philadelphia, Pa. / William Penn Charter (Liberty)
14	Brynn String	M	Fr.	5-7	Felton, Del. / Lake Forest
15	Sarah Rigual	M	Jr.	5-3	Fredericksburg, Va. / James Monroe
17	Kate Fiest	M	Jr.	5-6	Yorktown, Va. / Tabb
19	Carmella Gannon	M	Fr.	5-9	Felton, Del. / Lake Forest
21	Alexa Michielsens	M/F	Gr.	5-4	Bloemendaal, Netherlands / Intl. School of Amsterdam (Shippensburg)
24	Katie Clarke	M	Fr.	5-8	Purcellville, Va. / Loudoun Valley

GOALKEEPERS (2)

86	Gabby Prentice	GK	Fr.	5-8	Arnold, Md. / Archbishop Spalding
99	Kristi Merashoff	GK	Gr.	5-6	Towson, Md. / Towson HS (Northeastern)

GEOGRAPHICAL

Delaware (5)

3	Rachael Whitehead	M
5	Amanda Rattay	F
14	Brynn String	M
19	Carmella Gannon	M
22	Noelle Sabbagh	F

Kentucky (1)

25	Lainey Baker	F
----	--------------	---

Maryland (4)

4	Cameron Medinger	B
20	Izzy Rothwell	F
86	Gabby Prentice	GK
99	Kristi Merashoff	GK

Netherlands (4)

7	Linde van Leeuwen	B
8	Iris Bekker	B
18	Livia van't Hek	F
21	Alexa Michielsens	M

Pennsylvania (6)

1	Lily Cosner	B
2	Emma Miller	M
6	Tetje Williamson	M
10	Ella Cellini	M
13	Ashlee Bucksar	M/F
23	Kasey Rieger	F

Scotland (1)

12	Charlotte Robertson	M
----	---------------------	---

Virginia (4)

11	Elle Patterson	B
15	Sarah Rigual	M
17	Kate Fiest	M
24	Katie Clarke	M

302 BUILT

For the first time since the 2012 season, Delaware field hockey rosters five players who hail from The First State.

Jacki Coveleski, Morgan Hudson, Hannah Pepper, Rebecca Pepper, and Kasey Prettyman made up the five who stayed in-state to play for Delaware in that season.

In 2025, all three Delaware counties (New Castle, Kent, and Sussex) are represented by field hockey student-athletes.

ROSTER BY CLASS

GRADUATES (2)

Alexa Michielsens
Kristi Merashoff

SENIORS (6)

Lainey Baker
Iris Bekker
Cameron Medinger
Emma Miller
Izzy Rothwell
Noelle Sabbagh

JUNIORS (6)

Ashlee Bucksar
Kate Fiest
Elle Patterson
Sarah Rigual
Rachael Whitehead
Tetje Williamson

SOPHOMORES (2)

Lily Cosner
Linde van Leeuwen

FRESHMEN (9)

Ella Cellini
Katie Clarke
Carmella Gannon
Gabby Prentice
Amanda Rattay
Kasey Rieger
Charlotte Robertson
Brynn String
Livia van't Hek



HEAD COACH TARA ZOLLINGER

Hometown: Jeannette, Pa.
High School: Hempfield Area
Alma Mater: Maryland '13
Degree: Sociology
Year in Coaching: 12th in 2025
 (First as head coach at UD)

NOTABLE HIGHLIGHTS

3x Division I National Champ. ('10, '11, '15)
 3x Division II National Champ. ('17, '18, '21)
 Division II Runner-Up (2022)
 6x Division II Semifinal Appearances
 ('17, '18, '21, '22, '23, '24)
 4x NFHCA National Staff of the Year
 2x PSAC Coach of the Year

AS DELAWARE HEAD COACH

Year	1st in 2025
Overall Record	3-4
Home	2-3
Away/Neutral	1-1
vs. Top 25 Teams	0-1
vs. Top 10/Top 5 Teams	0-0/0-1
In Conference Games	0-0

ZOLLINGER YEAR-BY-YEAR

YEAR	W-L	PCT.	CONF
2017	17-4	.810	9-1
2018	19-4	.826	8-2
2019	12-6	.667	8-2
2021	20-0	1.000	10-0
2022	16-4	.800	7-2
2023	15-5	.750	8-1
2024	19-2	.905	9-0
2025	3-4	.429	0-0
TOTAL	3-4	.429	0-0
CAREER	121-28	.807	59-8

HEAD COACH TARA ZOLLINGER

Three-time Division II national championship winning head coach Tara Zollinger enters her first season as the head coach for Delaware field hockey after her hire in March of 2025.

"Tara has a proven track record of winning and competing at the highest levels," Skolnick said. "We are excited to welcome her, her husband Eyoel, and children Isra and Elias to the Blue Hen family. It was clear that she is committed to providing a great student-athlete experience and has a strong vision for player development. We are all looking forward to seeing Tara continue the rich history of success of our field hockey program."

Zollinger comes to Newark after spending the previous eight seasons (2017-24) as the head coach at DII Shippensburg in Pennsylvania where she won national championships in 2017, 2018, and 2021. She also led the Raiders to the 2022 national title game and semifinal appearances in 2023 and 2024.

A Jeannette, Pennsylvania native, Zollinger boasts a 118-25 career record, including 59-8 in conference play, and 10-3 in NCAA Tournaments. She has directed four National Field Hockey Coaches Association (NFHCA) Regional Coaching Staffs of the Year, and a trio of NFHCA National Coaching Staffs of the Year.

Over the course of her eight seasons in Shippensburg, Zollinger has produced 41 all-league players, and 23 All-Americans. She's claimed four regular season Pennsylvania State Athletic Conference (PSAC) titles and a pair of conference tournament titles.

Prior to taking the reins for the Raiders, she spent four seasons (2013-16) as an assistant coach at Syracuse where she worked for former Blue Hen and UD Athletics Hall of Fame inductee (2005) Ange Bradley. She helped Bradley and the Orange to a national championship, ACC regular season title, and both NFHCA regional and national coaching staff of the year awards.

At Syracuse, Zollinger was a part of one the school's most successful seasons. She helped instruct a 2015 team that posted a perfect 16-0 regular-season record – the first team in 25 seasons to achieve the feat. The No. 1-ranked Orange also

swept the 2015 ACC postseason awards, becoming the first team to do so since North Carolina in 1994.

A two-time PSAC Coach of the Year, Zollinger also serves as a coach with USA Field Hockey. She's held a number of roles including nexus coach (2021-25), supplemental coach for the women's U21 team (2024), high performance mid-atlantic region coach (2017-19), talent selection (2013-15, 2018, 2021-24), U14 futures national championship coach (2016-17), futures head coach and director (2014-17), and futures assistant coach (2010-14).

On the national level, Zollinger served a two-year term (2017-18 and 2018-19) as the field hockey representative on the coaches' council for WeCOACH (formerly Alliance of Women Coaches). She was one of 15 coaches from across the country spanning all three NCAA divisions that served on the council, serving as an ambassador in coaching communities and networks. At the completion of her term, Zollinger graduated from WeCOACH Academy 2.0.

She played college field hockey for former Blue Hen and UD Athletics Hall of Famer (1998) Missy Meharg at Maryland. For the Terps, Zollinger was an attacker who won two NCAA Championships (2010, 2011) and two ACC Championships (2009, 2010) – reaching the Final Four in all four of her collegiate seasons. She received Maryland's Kateri Simon Award in 2012, recognizing an athlete that persevered in times of adversity and displayed courage while bringing positive energy to all team sessions.

Zollinger earned her undergraduate degree in sociology in 2013 and was an active member of the Student-Athlete Advisory Committee (SAAC). She was also a development assistant with the University of Maryland Terrapin Club, coordinating and organizing member and donor events.

She also holds two master's degrees in sport administration (2019) and sport and exercise psychology (2018) from Lock Haven.

Zollinger and her husband Eyoel have two children – Isra and Elias.

ZOLLINGER'S COACHING HISTORY

YEAR	SCHOOL	POSITION
2025-Pres.	Delaware	Head Coach
2017-24	Shippensburg	Head Coach
2013-16	Syracuse	Assistant Coach

SUPERLATIVES UNDER TARA ZOLLINGER

Most Goals	4, vs. Temple, Cal, and at Lock Haven (8/29, 8/31, and 9/21/25)
Goals Allowed	5, vs. Temple & Cal (8/29 & 8/31/25)
Shots	20, vs. Bucknell (9/14/25)
Shots Allowed	30, vs. Northwestern (9/19/25)
Shots on Goal	13, vs. Bucknell (9/14/25)
Saves	10, vs. Northwestern (9/19/25)

ASSISTANT COACHES



ALLY MOONEY
ASSISTANT COACH

Mooney enters her first season as an assistant coach with Delaware field hockey in 2025 after being hired in April of 2025.

Mooney comes to Newark after spending the previous three seasons under Zollinger at DII Shippensburg, where she served as the program's defensive coordinator. She led a unit that sat atop the nation in goals against average (0.80) and scoring margin (+2.71), while sitting third in shutouts per game (0.48).

In charge of the Raider goalkeepers, Mooney oversaw the emergence of the NCAA Division II leader in save percentage (.821) and helped guide the Raiders to the PSAC Championship game and the NCAA Division II Semifinals during the 2023 season.

Mooney joined the coaching staff at her alma mater in 2022, and helped guide the Raiders to their second-consecutive NCAA Division II National Championship Game appearance.

Mooney returned to Shippensburg after spending three seasons as an assistant coach at Appalachian State University, contributing to numerous accomplishments with the Mountaineers.

As a student-athlete at Shippensburg, Mooney was a starting goalkeeper who helped the Raiders win three consecutive NCAA Division II National Championships from 2016-18. She registered a 68-16 record and had an .816 save percentage, recording 24 shutouts between the posts and allowing less than a goal per game over the course of her career.

Mooney was a two-time team captain and earned multiple awards during her collegiate career. Along with three national championships, Mooney was named an NFCA All-American in 2014 and 2016. As a freshman, she earned a spot on the Synapse Sports All-Rookie Team after allowing just 0.76 goals per game.

A native of Spring City, Pa., Mooney earned a bachelor's degree in exercise science with a minor in coaching in December 2018 and her master's degree from Shippensburg in 2023 in organizational development and leadership with a concentration in business.



DEVIN KINZEL
ASSISTANT COACH

Kinzel will begin her first campaign as an assistant coach with the Delaware field hockey program in the 2025 season.

Kinzel spent four seasons on the Temple University field hockey team and assumed a role as a volunteer assistant with her alma mater beginning in January of 2025.

During her playing career, she was a team captain her senior season and earned All-BIG EAST Second Team honors while helping the Owls achieve their furthest postseason run since 2015.

Her stint as a coach with her former team allowed her to assist with team management and game preparation, as well as mentoring players while encouraging academic and athletic success.



SYDNEY RHODES-JAMES
VOLUNTEER ASSISTANT COACH

Rhodes-James joins the Delaware field hockey staff for her first season as a volunteer assistant coach in 2025.

Rhodes-James returns to Newark after graduating in 2019 and making multiple coaching stops along the way.

The Delaware alum was a five-year goalie for the Blue Hens, who made 50 appearances, including nine during the Hen's run to capturing the 2016 NCAA Division I Championship. She graduated in 2019 with a bachelor's degree in health behavior science from Delaware's College of Health Sciences.

Rhodes-James started her coaching experience working with Harford Hockey Organization (H2O) in Harford County, Md., in 2014, a position she held through 2021.

Her collegiate coaching experience includes time as an assistant coach with the University of Pennsylvania, where she spent four seasons from 2021-24 with a specialized focus in coaching the goalkeepers and organizing team logistics.

During that time, Penn was able to have a goalie earn First Team All-Ivy League under Rhodes-James' tutelage.

After leaving Philadelphia, Rhodes-James reconnected with H2O in January 2025, becoming the program's co-director, head coach, and head goalkeepers coach for players aged 10-19.

SUPPORT STAFF

Kate Rudolph // Sport Administrator

Bridget Burger // Academic Advisor

Madison Feeser // Athletic Trainer

Katie Bertolet // Strength & Conditioning Coach

Hanalyn Podgurski // Nutritionist

Christina Rasnake // Director, Sports Science & Analytics

Andrew Reisman, MD // Chief Medical Officer

Noah Barraclough // Communications Contact

Reese Momorella // Team Manager

Nico Campbell // Practice Player

COACHES IN COLLEGE



TARA ZOLLINGER

MARYLAND '13

Quick Facts: Played in 19 games as a member of the Terrapins... Coached by Delaware field hockey program alum, Missy Meharg '85... Part of the 2010 and 2011 Division I National Championship teams... Appeared in a 4-0 win at Delaware in her sophomore season.... Recorded an assist against Rutgers in her senior year... Maryland played to a 19-0 record in Zollinger's games played.



ALLY MOONEY

SHIPPENSBURG '18

Quick Facts: Started 84 games in goal for Shippensburg across four seasons... Was a two-time national champion, as well as a two-time NFHCA All-American... Held a 68-16 record with 27 shutouts, in addition to a .816 save percentage in goal... Led the NCAA in GAA (0.43) and save percentage (.894) in 2016.



DEVIN KINZEL

TEMPLE '24

Quick Facts: Played four seasons for the Owls... Played 77 games, starting 70... Scored 14 goals and dished out nine assists, including a career high seven goals in 2024... Earned BIG EAST All-Conference Second Team in her senior season.



SYDNEY RHODES-JAMES

DELAWARE '19

Quick Facts: Played 50 games in cage for the Blue Hens from 2015-19... Was part of the 2016 Division I NCAA Championship team... Earned All-CAA first team in her final two seasons... Started her final 35 games of her career, playing to a 24-11 record.



delaware

STARTERS BY GAME

OPP	B	B	B	M	M	M	F	F	F	B/M/F	GK
Temple	Bekker	Medinger	Williamson	Fiest	Rigual	Clarke	Michielsens	Sabbagh	Miller	Whitehead	Merashoff
Cal	Bekker	Medinger	van Leeuwen	Fiest	Rigual	Clarke	Michielsens	Sabbagh	Miller	Whitehead	Merashoff
at Penn State	Bekker	Medinger	van Leeuwen	Fiest	Rigual	Clarke	Michielsens	Sabbagh	Miller	Whitehead	Prentice
Kent State	Bekker	Medinger	van Leeuwen	Fiest	Rigual	Rattay	Michielsens	Sabbagh	Miller	Whitehead	Prentice
Bucknell	Bekker	Medinger	van Leeuwen	Fiest	Rigual	Cosner	Michielsens	Sabbagh	Miller	Whitehead	Prentice
Northwestern	Bekker	Medinger	van Leeuwen	Fiest	Rigual	Clarke	Michielsens	Sabbagh	Miller	Whitehead	Merashoff
at Lock Haven	Bekker	Medinger	van Leeuwen	Fiest	Rigual	Clarke	Michielsens	Sabbagh	Miller	Whitehead	Merashoff
at Saint Joseph's											
William & Mary											
Ohio State											
at Towson											
at Drexel											
at Wake Forest											
Old Dominion											
American											
Lafayette											
at Penn											



delaware

MISCELLANEOUS GAME INFO

OPP	DAY/NIGHT GAME	FIRST POSS.	LENGTH	JERSEY	RESULT
Temple	Day	Temple	1:50	Blue	Loss, 5-4
Cal	Day	Cal	1:50	Blue	Loss, 5-4
at Penn State	Day	Penn State	2:12	White	Loss, 3-2 (2OT)
Kent State	Night	Kent State	1:38	Black	Win, 2-0
Bucknell	Day	Bucknell	1:35	Blue	Win, 3-1
Northwestern	Day	Delaware	1:47	Blue	Loss, 4-0
at Lock Haven	Day	Delaware	1:32	White	Win, 4-0
at Saint Joseph's					
William & Mary					
Ohio State					
at Towson					
at Drexel					
at Wake Forest					
Old Dominion					
American					
Lafayette					
at Penn					



delaware

WEEKLY STATISTICAL LEADERS

OPP	GOALS	SHOTS	ASSISTS	SAVES
Temple	1, Bekker, Fiest, Miller, Whitehead	3, Michielsen	1, Fiest, Miller, Rigual	0, Merashoff
Cal	2, Miller, Bekker	7, Bekker	1, Bekker, Clarke, Fiest, Whitehead	3, Prentice
at Penn State	1, Fiest, Michielsen	3, Fiest	1, Bekker, Sabbagh	4, Prentice
Kent State	1, van Leeuwen, Bekker	3, Bekker, Sabbagh	2, Fiest, Rigual	0, Prentice
Bucknell	1, Fiest, Michielsen, van't Hek	4, Bekker, Michielsen	1, Cellini, Cosner	1, Prentice
Northwestern	--	2, Miller	--	10, Merashoff
at Lock Haven	1, Cosner, van't Hek, Sabbagh, Michielsen	3, Michielsen, Sabbagh	2, Michielsen	3, Merashoff
at Saint Joseph's				
William & Mary				
Ohio State				
at Towson				
at Drexel				
at Wake Forest				
Old Dominion				
American				
Lafayette				

delaware

SCORING PLAYS

GOAL SCORER	ASSIST(S)	OPPONENT	TIME & QUARTER	SEASON GOAL NUM.
Iris Bekker	Rigual, Fiest	Temple	14:05, Second Quarter	1
Emma Miller	--	Temple	11:42, Second Quarter	1
Kate Fiest	--	Temple	4:53, Third Quarter	1
Rachael Whitehead	Miller	Temple	2:28, Fourth Quarter	1
Iris Bekker	--	California	13:13, First Quarter	2
Emma Miller	Clarke	California	4:41, Third Quarter	2
Emma Miller	Bekker	California	0:00, Third Quarter	3
Iris Bekker	---	California	5:28, Fourth Quarter	3
Kate Fiest	Bekker	Penn State	8:00, Third Quarter	2
Alexa Michielsen	Sabbagh	Penn State	0:43, Fourth Quarter	1
Linde van Leeuwen	Fiest, Rigual	Kent State	1:17, Second Quarter	1
Iris Bekker	Fiest, Rigual	Kent State	8:18, Third Quarter	4
Alexa Michielsen	Cosner	Bucknell	6:43, Second Quarter	2
Kate Fiest	---	Bucknell	3:17, Second Quarter	3
Livia van't Hek	Cellini	Bucknell	0:20, Third Quarter	1
Lily Cosner	Michielsen	Lock Haven	6:27, First Quarter	1
Livia van't Hek	Clarke	Lock Haven	11:17, Fourth Quarter	2
Noelle Sabbagh	Michielsen	Lock Haven	11:09, Fourth Quarter	1
Alexa Michielsen	Sabbagh	Lock Haven	9:25, Fourth Quarter	3

*goal was tipped off initial shot

2025 SEASON STATS

Record:	Overall	Home	Away	Neutral
All Games	3-4	2-3	1-1	0-0

Date	Opponent	W/L	Score	Att.
8/29/2025	TEMPLE	L	4-5	319
8/31/2025	CALIFORNIA	L	4-5	284
9/5/2025	at Penn State	L	2-3	440
9/12/2025	KENT ST.	W	2-0	350
9/14/2025	BUCKNELL	W	3-1	288
9/19/2025	NORTHWESTERN	L	0-4	498
9/21/2025	at HAVEN	W	4-0	369

Team Statistics	DELAWARE	OPP
SHOT STATISTICS		
Goals-Shot Att.	19-90	18-88
Goals Per Game	2.71	2.57
Shot Pct.	0.211	0.205
Shots on Goal-Att.	57-90	42-88
SOG Pct.	0.633	0.477
Shots/Game	12.9	12.6
PENALTY CORNERS	41	51
PENALTY STROKES	1-2	1-1
PENALTIES		
Yellow Cards	6	5
Red Cards	0	0
ATTENDANCE		
Total	1,739	809
Dates-Avg Per Date	5/347	2/404
Neutral Site #-Avg	0/	

#	Player	GP	G	A	PTS	SH	SH%	SOG	SOG%	YC-RC	GW	PK-ATT	DS
8	Bekker, Iris	7	4	2	10	20	0.200	11	0.550	0-0	0	1-2	1
17	Fiest, Kate	7	3	4	10	8	0.375	8	1.000	1-0	0	0-0	0
21	Michielsen, Alexa	7	3	2	8	14	0.214	7	0.500	2-0	1	0-0	0
2	Miller, Emma	7	3	1	7	11	0.273	9	0.818	1-0	0	0-0	0
22	Sabbagh, Noelle	7	1	2	4	9	0.111	5	0.556	1-0	0	0-0	0
1	Cosner, Lily	7	1	1	3	2	0.500	2	1.000	0-0	1	0-0	1
15	Rigual, Sarah	7	0	3	3	5	0.000	1	0.200	0-0	0	0-0	0
3	Whitehead, Rachael	7	1	1	3	3	0.333	2	0.667	0-0	0	0-0	0
24	Clarke, Katie	7	0	2	2	4	0.000	4	1.000	1-0	0	0-0	0
	Hek, Livia van't	6	1	0	2	3	0.333	2	0.667	0-0	0	0-0	0
	Leeuwen, Linde van	6	1	0	2	5	0.200	2	0.400	0-0	1	0-0	0
18	van't Hek, Livia	1	1	0	2	1	1.000	1	1.000	0-0	0	0-0	0
10	Cellini, Ella	7	0	1	1	2	0.000	1	0.500	0-0	0	0-0	0
4	Medinger, Cameron	7	0	0	0	0	0.000	0	0.000	0-0	0	0-0	0
99	Merashoff, Kristi	4	0	0	0	0	0.000	0	0.000	0-0	0	0-0	0
11	Patterson, Elle	1	0	0	0	0	0.000	0	0.000	0-0	0	0-0	0
86	Prentice, Gabby	4	0	0	0	0	0.000	0	0.000	0-0	0	0-0	0
5	Rattay, Amanda	7	0	0	0	3	0.000	2	0.667	0-0	0	0-0	0
12	Robertson, Charlotte	4	0	0	0	0	0.000	0	0.000	0-0	0	0-0	0
20	Rothwell, Izzy	3	0	0	0	0	0.000	0	0.000	0-0	0	0-0	0
14	String, Brynn	7	0	0	0	0	0.000	0	0.000	0-0	0	0-0	0
7	van Leeuwen, Linde	1	0	0	0	0	0.000	0	0.000	0-0	0	0-0	0
6	Williamson, Tetje	7	0	0	0	0	0.000	0	0.000	0-0	0	0-0	2
Total		7	19	19	57	90	0.211	57	0.633	6-0	3	1-2	4
Opponent		7	18	14	50	88	0.205	42	0.477	5-0	4	1-1	0

#	Goalie	GP	MIN	GA	GAA	SAVE	PCT	W-L-T	SHO
99	Merashoff, Kristi	4	212:50	14	3.95	14	0.500	1-3-0	1/0
86	Prentice, Gabby	4	223:37	4	1.07	6	0.600	2-1-0	1/0
Total		7	436:27	18	2.47	20	0.526	3-4-0	2
Opponents		7	436:27	19	2.61	38	0.667	--	1

Goals by Period	1st	2nd	3rd	4th	OT	OT2	Total
DELAWARE	2	5	6	6	0	0	19
Opponents	4	4	3	6	0	1	18

Shots by Period	1st	2nd	3rd	4th	OT	OT2	Total
DELAWARE	18	25	22	25	0	0	90
Opponents	19	15	19	32	0	3	88

Saves by Period	1st	2nd	3rd	4th	OT	OT2	Total
DELAWARE	4	3	5	11	0	1	24
Opponents	9	5	9	15	0	0	38

Corners by Period	1st	2nd	3rd	4th	OT	OT2	Total
DELAWARE	4	14	10	13	0	0	41
Opponents	13	5	13	18	0	2	51

Fouls by Period	1st	2nd	3rd	4th	OT	OT2	Total
DELAWARE	56	40	61	62	0	0	219
Opponents	53	68	51	58	0	0	230

NCAA RANKINGS

Statistic	National Rank	Conference Rank	Value	National Leader	Value	Conference Leader	Value
Assists Per Game (79 ranked)	20	1	2.71	Monmouth	4.43	Delaware	2.71
Defensive Saves (29 ranked)	4	1	4	Lafayette Lock Haven Merrimack	5 5 5	Delaware	4
Goals Against Average (79 ranked)	59	2	2.47	Northwestern	0.25	UC Davis	2.38
Goals Per Game (78 ranked)	29	1	2.71	Monmouth	5.29	Delaware	2.71
Penalty Corners Per Game (78 ranked)	37	1	5.86	Cornell	14.00	Delaware	5.86
Points Per Game (77 ranked)	24	1	8.14	Monmouth	15.00	Delaware	8.14
Save Percentage (79 ranked)				Northwestern	0.920	Queens (NC)	0.684
Saves Per Game (78 ranked)	70	3	2.86	Lock Haven	11.25	Queens (NC)	9.29
Scoring Average (79 ranked)	30	1	2.61	Monmouth	5.29	Delaware	2.61
Scoring Margin (51 ranked)	50	1	0.14	North Carolina	3.63	Delaware	0.14
Shutouts Per Game (57 ranked)	19	1	0.29	Northwestern	0.75	Delaware	0.29
Winning Percentage (78 ranked)	44	2	0.429	7 teams tied	1.000	UC Davis	0.500

Statistic	Player	National Rank	Conference Rank	Value	National Leader	Value	Conference Leader	Value
Assists Per Game (134 ranked)	Kate Fiest Sarah Rigual	47 87	2 4	0.57 0.43	Lise Boekaar, App State	2.00	Beth Munro-Morris, UC Davis	0.67
Defensive Saves (1 ranked)					4 players tied	3		
Goalie Win-Loss Pct (71 ranked)	Gabrielle Prentice	22	1	0.667	11 players tied	1.000	Gabrielle Prentice, Delaware	0.667
Goals Against Average (80 ranked)	Gabrielle Prentice	11	1	1.07	Juliana Boon, Northwestern	0.25	Gabrielle Prentice, Delaware	1.07
Goals Per Game (149 ranked)	Iris Bekker Kate Fiest Alexa Michielsen Emma Miller	68 116 116 116	2 4 4 4	0.57 0.43 0.43 0.43	Dionne van Aalsum, Iowa	2.00	Ella Franken, UC Davis	0.67
Points Per Game (144 ranked)	Iris Bekker Kate Fiest Alexa Michielsen Emma Miller	80 80 122 144	2 2 4 5	1.43 1.43 1.14 1.00	Lise Boekaar, App State	4.29	Ella Franken, UC Davis	1.50
Save Percentage (80 ranked)	Gabrielle Prentice	70	3	0.600	Juliana Boon, Northwestern	0.920	Madison Destefano, Queens (NC)	0.681
Saves Per Game (79 ranked)	Gabrielle Prentice	78	3	1.50	Isabelle Gardiner, Merrimack	10.67	Madison Destefano, Queens (NC)	9.14

delaware TV ROSTER



1

**LILY
COSNER**

Sophomore
B | 5-2
Doylestown, Pa.
Central Bucks West



2

**EMMA
MILLER**

Senior
M | 5-5
Mount Joy, Pa.
Donegal HS



3

**RACHAEL
WHITEHEAD**

Junior
M | 5-9
Hockessin, Del.
The Tatnall School



4

**CAMERON
MEDINGER**

Senior
B | 5-7
Baltimore, Md.
Garrison Forest School



5

**AMANDA
RATTAY**

Freshman
F | 5-6
Newark, Del.
Newark Charter



6

**TETJE
WILLIAMSON**

Junior
M | 5-4
Oley, Pa.
Oley Valley



7

**LINDE
VAN LEEUWEN**

Sophomore
B | 5-6
Heemstede, Netherlands
Lyceum Sancta Maria
(Bryant)



8

**IRIS
BEKKER**

Senior
B | 5-8
Zuidlaren, Netherlands
GHHC Groningen
(Kent State)



10

**ELLA
CELLINI**

Freshman
M | 5-5
Phoenixville, Pa.
Villa Maria Academy



11

**ELLE
PATTERSON**

Junior
B | 5-7
Ashburn, Va.
Independence HS



12

**CHARLOTTE
ROBERTSON**

Freshman
M/F | 5-6
Edinburgh, Scotland
Millfield School



13

**ASHLEE
BUCKSAR**

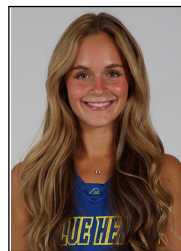
Junior
M/F | 5-7
North Wales, Pa.
Penn Charter (Liberty)



14

**BRYNN
STRING**

Freshman
M | 5-7
Felton, Del.
Lake Forest



15

**SARAH
RIGUAL**

Junior
M | 5-3
Fredericksburg, Va.
James Monroe



17

**KATE
FIEST**

Junior
M | 5-6
Yorktown, Va.
Tabb HS



18

**LIVIA
VAN'T NEK**

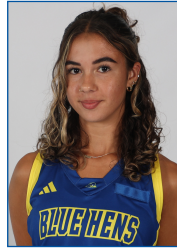
Freshman
F | 5-8
Amsterdam, Netherlands
St. Nicolasaslyceum

delaware
TV ROSTER

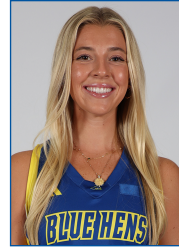

19
CARMELLA
GANNON
Freshman
M | 5-9
Felton, Del.
Lake Forest



20
IZZY ROTHWELL
Senior
F | 5-7
Sparks, Md.
Bryn Mawr School



21
ALEXA
MICHIENSEN
Graduate Student
M/F | 5-4
Bloemendaal, Netherlands
Int. School of Amsterdam
(Shippensburg)



22
NOELLE
SABBAGH
Senior
F | 5-3
Lewes, Del.
Cape Henlopen HS



23
KASEY RIEGER
Freshman
F | 4-11
Langhorne, Pa.
Neshaminy



24
KATIE
CLARKE
Freshman
M | 5-8
Purcellville, Va.
Loudoun Valley



25
LAINY
BAKER
Senior
F | 5-7
Louisville, Ky.
Sacred Heart Academy



86
GABBY
PRENTICE
Freshman
GK | 5-8
Arnold, Md.
Archbishop Spalding



99
KRISTI
MERASHOFF
Graduate Student
GK | 5-6
Towson, Md.
Towson HS



TARA
ZOLLINGER
Head Coach
1st season
Maryland '13



ALLY
MOONEY
Assistant
Coach
1st season
Shippensburg '18



DEVIN
KINZEL
Assistant
Coach
1st season
Temple '24



SYDNEY
RHODES-JAMES
Volunteer
Assistant Coach
1st season
Delaware '19