



DELAWARE FIGHTIN' BLUE HENS

FIELD HOCKEY GAME NOTES

a new era.



Noah Barraclough, Assistant Director, Communications & Creative Services | 484-877-6149 | noahcb@udel.edu

SERIES HISTORY - KENT STATE

All Time	1-1
Streak	L1
At Home	0-1
On the Road	0-0
Neutral Site	1-0
Last Win	3-2 - 8/26/07
Last Loss	2-1 - 11/12/14

SERIES HISTORY - BUCKNELL

All Time	11-2-2
Streak	W4
At Home	6-1
On the Road	4-1-2
Neutral Site	1-0
Last Win	1-0 - 9/6/24
Last Loss	1-0 - 10/21/89
Last Tie	0-0 - 10/20/90

HOW TO FOLLOW

TV/Stream	YouTube
Live Stats	bluehenstats.statb.us
X/Instagram	@Delaware_FH

WHO ARE WE

Only refer to our institution as the University of Delaware or UD. Do not use "U of D," "UofD," "the U of D" or "UDel." Do not use periods in "UD."

We are the Fightin' Blue Hens on first reference and Blue Hens, Hens, or Blue & Gold after that.

MEDIA RELATIONS

For interview requests for field hockey players or coaches, please contact Noah Barraclough, Assistant Director of Communications & Creative Services
Emailnoahcb@udel.edu
Number.....484-877-6149

DELAWARE (0-3)

GM
4

KENT STATE (1-2)



Head Coach: Tara Zollinger
Record at UD: 0-3 (First year)
Career Record: 118-28 (8 years)
Last: L, 3-2 (2OT) vs. Penn State



Head Coach: Heather Hefner
Record at KSU: 8-14 (2nd year)
Career Record: 8-14
Last: L, 4-1 at Iowa

september 12, 2025 | 6 p.m. | newark, del. | fred p. rullo stadium (2,000) | YouTube

DELAWARE (0-3)

GM
5

BUCKNELL (2-2)



Head Coach: Tara Zollinger
Record at UD: 0-3 (First year)
Career Record: 118-28 (8 years)
Last: L, 3-2 (2OT) vs. Penn State



Head Coach: Kelsey Kolojechick
Record at BU: 26-28 (3rd season)
Career Record: same
Last: L, 3-1 vs Temple

september 14, 2025 | 1 p.m. | newark, del. | fred p. rullo stadium (2,000) | YouTube

Delaware Fightin' Blue Hens field hockey returns home after a narrow 3-2 loss to Penn State in double overtime.

Bucknell and Kent State come to Newark, both at or under .500, suffering losses in their previous contests. The Bison last visited Newark in 2015, while it has been since 2014 that Kent State traveled into town.

Gabby Prentice made her first collegiate start in goal against Penn State, making four saves in the contest as it went to double overtime.

Alexa Michielsen netted her first goal as a Blue Hen with 43 seconds remaining to send the game to extra time.

The Bison return two of their three leading point scorers from 2024 in Reese Czajkowski and Kira Leclercq, the latter of whom earned MAC Defensive Player of the Year honors a season ago. Both tie for the team lead with four points each.

Despite falling in their last two contests, the Golden Flashes found the back of the cage 10 times against Mercyhurst, one of five times a Division I team has scored double-digit goals this season.



emma miller & iris bekker

points

7 points



emma miller

goals

3 goals



iris bekker

assists

3 assists

2025 SCHEDULE

 aug. 29 L, 5-4	 aug. 31 L, 5-4	 sept. 5 L, 3-2 (2OT)	 sept. 12 Newark, Del. YouTube 6 PM	 sept. 14 Newark, Del. YouTube 1 PM	 sept. 19 Newark, Del. YouTube 4 PM	 sept. 21 Lock Haven, Pa. PSDN 2 PM	 sept. 24 Merion Station, Pa. ESPN+ 4 PM	 sept. 26 Newark, Del. YouTube 3 PM	 sept. 28 Newark, Del. YouTube 1 PM	 oct. 3 Towson, Md. FloSports 3 PM	 oct. 5 Philadelphia, Pa. FloSports noon					
<p>*all times ET</p>																
<table><tr><td> oct. 12 Winston-Salem, NC TBA noon</td><td> oct. 19 Newark, Del. YouTube noon</td><td> oct. 26 Newark, Del. YouTube 2 PM</td><td> oct. 31 Newark, Del. YouTube 5 PM</td><td> nov. 2 Philadelphia, Pa. TBA 1 PM</td></tr></table>												 oct. 12 Winston-Salem, NC TBA noon	 oct. 19 Newark, Del. YouTube noon	 oct. 26 Newark, Del. YouTube 2 PM	 oct. 31 Newark, Del. YouTube 5 PM	 nov. 2 Philadelphia, Pa. TBA 1 PM
 oct. 12 Winston-Salem, NC TBA noon	 oct. 19 Newark, Del. YouTube noon	 oct. 26 Newark, Del. YouTube 2 PM	 oct. 31 Newark, Del. YouTube 5 PM	 nov. 2 Philadelphia, Pa. TBA 1 PM												

A NEW ERA

The University of Delaware field hockey program will be joining Mountain Pacific Sports Federation (MPSF) for the 2025 season, joining UC Davis as one of two founding members of the league's sponsorship, the organizations announced jointly on September 2. This will be the newest field hockey NCAA DI conference since the Northeast Conference formed in 1998.

A program with rich tradition and history, Delaware enters MPSF after claiming its 10th Coastal Athletic Association (CAA) Championship in the last 12 seasons in 2024. Overall, UD has won 16 league crowns since the program's inception in 1971. The Blue & Gold have appeared in 17 NCAA/AIAW Tournament appearances, highlighted by a NCAA National Championship in 2016.

"We are thrilled to give our student-athletes the chance to compete in a new conference and the opportunity to compete for a league title," Interim Director of Athletics Jordan Skolnick said. "We are thankful to MPSF, Commissioner Foti Mellis and co-founding member UC Davis for joining us in creating this opportunity for our student-athletes. Our field hockey program has been and will continue

to be one of our most nationally competitive teams at Delaware. Finding a path forward towards a conference has been critically important and creating a new conference gives us the ability to work towards once again being in a league with an automatic bid to the NCAA tournament."

Field hockey makes the record-setting 16th current intercollegiate olympic sport for the conference, exceeding the previous all-time high of 15 during the 2024-25 academic year. Field hockey is the seventh sport to be added to the MPSF in Commissioner Foti Mellis' tenure since the fall of 2021, four of which debuted last year. The conference champion will be decided by the winner of the championship contest between the two teams, hosted by UC Davis in November.

"We are excited to join the MPSF in the inaugural year of sponsoring field hockey," Delaware Head Field Hockey Coach Tara Zollinger said. "Alongside UC Davis, we are eager to compete and grow our conference while providing access to a conference championship for our deserving student-athletes."

Mountain Pacific Sports Federation, University of Delaware, and UC Davis

will work together to attempt to get to six members for the 2026 season, the minimum needed to qualify for an automatic bid to the NCAA tournament. The group hopes to attract teams from universities interested in starting field hockey programs, and from institutions who want their student-athletes to have a chance to compete for a conference championship and an automatic bid, as many conferences do not invite all member teams to compete in their conference tournament. MPSF plans to have all six teams compete in their conference tournament annually.

The MPSF Championship game against UC Davis will take place on November 8, and will be the first-ever matchup between the two schools.



USA SPONSORED DELAWARE SPORTS

- Baseball
- M/W Basketball
- W Cross Country/Track & Field
- Football
- M/W Golf
- W Soccer
- Softball
- M/W Tennis
- Volleyball

OTHER DELAWARE SPORTS AFFILIATIONS

- | | | | |
|----------------|-----------------|-----------------|-------------------|
| - Field Hockey | MPSF | - W Lacrosse | Atlantic Sun |
| - W Ice Hockey | Atlantic Hockey | - W Rowing | Mid-American |
| | America | - M Soccer | The Summit League |
| - M Lacrosse | Atlantic 10 | - M/W Swim/Dive | Atlantic Sun |

QUICK FACTS

School.....	University of Delaware
Location.....	Newark, Del.
Founded	1743
Enrollment	24,039
Interim President.....	Laura Carlson
Interim Director of Athletics.....	Jordan Skolnick
School Website.....	www.udel.edu
Nickname.....	Fightin' Blue Hens
School Colors	Blue & Gold
Athletics Website	www.bluehens.com

FIELD HOCKEY PROGRAM

Stadium.....	Fred P. Rullo Jr. Stadium
Surface	Artificial Turf
Capacity	2,000
First Season of Field Hockey.....	1971
All-Time Record619-.392-.39
All-Time Rullo Stadium Record.....	155-104
National Championships.....	1, (2016)
Conference Championships.....	16 (2024)
Head Coach.....	Tara Zollinger (Maryland '13)
Career Record.....	118-28 / 8 seasons
Record at UD.....	0-3
2024 Record.....	19-2 (at Shippensburg)
Letterwinners Returning/Lost.....	12/11
Starters Returning/Lost.....	
Field Players.....	5/5
Goalkeepers.....	0/1
Newcomers.....	13
2024 Overall Record	12-10
2024 CAA Record.....	3-3
2024 CAA Finish.....	3rd, won CAA Tournament
2024 Postseason.....	NCAA Second Round

TABLE OF CONTENTS

A New Era	2
Quick Facts, Program History.....	3
Storylines	3-5
Current Streaks.....	4
Delaware Record When.....	5
Zollinger All-Time vs. Opponents.....	5
Roster + Pronunciations.....	6
Roster by Class & Geography.....	7
Tara Zollinger's Bio.....	8
Assistant Coaches & Support Staff.....	9
Coaches in College.....	10
Starters by Game.....	11
Miscellaneous Information.....	12
Weekly Statistical Leaders	13
Scoring Plays	13
Season Statistics.....	14
NCAA Statistics.....	15
TV Rosters.....	16-17

WHAT TO LOOK FOR...

- A win would earn head coach Tara Zollinger her first win at Delaware.
- Eleven different Blue Hens are seeking their first goal at Delaware in this contest.

new conference, who dis?

On Tuesday, September 2, Delaware announced their new affiliation for field hockey to compete in the Mountain Pacific Sports Federation (MPSF). The Fightin' Blue Hens jointly founded the league with UC Davis, who they will face in a conference championship game on November 8, 2025. Mountain Pacific Sports Federation, University of Delaware, and UC Davis will work together to attempt to get to six members for the 2026 season.

new hen in the flock

Tara Zollinger was hired in March 2025 to be the seventh head coach in program history. She won three DII National Championships at Shippensburg, and made the semifinal game in all six of her NCAA Tournament appearances. Zollinger coached to a record of 118-25 (.825), producing 41 all-league players, and 23 All-Americans in her time with the Raiders.

portal combat

The Hens' coaching staff recruited four players out of the transfer portal this offseason. B **Linde van Leeuwen** (Liberty), M/F **Ashlee Bucksar** (Liberty), M/F **Alexa Michielsen** (Shippensburg), and GK **Kristi Merashoff** (Northeastern) all join the squad after spending the 2024 season at another institution. B **Iris Bekker** returns for her second season after transferring in from Kent State.

the bekker bowl

Iris Bekker, the Hens' leading point scorer, transferred in after playing two seasons for the Golden Flashes in 2022-23, earning All-MAC Second Team and All-MAC Freshman Team honors.

multi-goal madness!

Delaware has scored at least two goals in three consecutive games, matching their one instance of that occurring in 2024. The Blue Hens scored multiple goals in each of their games from Nov. 3-Nov 13, spanning the run to winning the CAA Championship.

hey old friend!

Fightin' Blue Hens' head coach **Tara Zollinger** played with Bucknell assistant coach, Ali McEvoy at Maryland during her final three seasons. The duo helped the Terrapins to two national championships.

trailblazers

In the inaugural weekend of MPSF Field Hockey action, the Blue Hens had two players earn Player of the Week awards. Alexa Michielsen and Iris Bekker were named MPSF Offensive and Defensive Player of the Week, respectively. The Dutch duo marked the first ever field hockey players of the week that the MPSF has awarded.

fresh face

After coming on in relief against California, **Gabby Prentice** has spent 103 consecutive minutes in goal, playing to a .667 save percentage and 1.74 GAA.

2025 STATISTICAL COMPARISON

Category	DEL	NCAA	MPSF	KSU	NCAA	MAC	BU	NCAA	PL
Assists Per Game	2.67	23rd	2nd	3.33	10th	3rd	1.00	58th	6th
Defensive Saves	2	8th	1st	2	8th	2nd	--	--	--
Goals Against Average	3.97	67th	2nd	4.67	73rd	8th	1.67	31st	2nd
Goals Per Game	3.33	16th	1st	4.67	5th	2nd	1.00	70th	7th
Penalty Corners Per Game	7.00	26th	2nd	8.67	10th	3rd	2.50	74th	7th
Points Per Game	9.33	16th	1st	12.67	6th	3rd	3.00	69th	7th
Save Percentage	.350	78th	2nd	.563	65th	8th	.706	33rd	5th
Saves Per Game	2.33	63rd	2nd	6.00	21st	5th	3.00	57th	7th
Scoring Average	3.05	21st	1st	4.67	6th	2nd	1.33	64th	6th
Scoring Margin	--	--	--	--	--	--	--	--	--
Shutouts Per Game	--	--	--	--	--	--	.25	22nd	4th
Winning Percentage	0.000	70th	1st	.333	54th	6th	.500	34th	2nd

around the world

The Hens roster includes five international student-athletes this season, including four from The Netherlands. B **Linde van Leeuwen**, B **Iris Bekker**, M/F **Alexa Michielsens**, and F **Livia van't Hek** hail from The Netherlands. While freshman M/F **Charlotte Robertson** is from Edinburgh, Scotland.

bringing some friends along

Head coach **Tara Zollinger** brought her assistant coach from Shippensburg in **Ally Mooney** to the 302 to coach the goalkeepers. Mooney played for Zollinger from 2017-18, where the pair won two national championships. Graduate M/F **Alexa Michielsens** joined the Fightin' Blue Hens after three seasons at Shippensburg, where she played in 40 games, scoring 10 goals. She earned All-PSAC Third Team honors and was the 2024 PSAC Field Hockey Tournament MVP.

family ties

Delaware field hockey has become a family affair over the years. Many sisters and mother-daughter pairs have suited up in the blue & gold over the programs 55 seasons. The Blue Hens have four such duos across the 2025 roster.

M **Tetje Williamson** is the daughter of **Kelly Cawley '99**, a Delaware Athletics Hall of Famer who ranks second in all-time points.

M **Emma Miller** is the sister of **Grace Miller**, a 2022 graduate who played in 71 games, earning all-conference second team honors her senior year.

M **Sarah Rigual's** sister, **Morgan Rigual**, made 68 appearances for

Delaware. She graduated in 2023, assisting the Blue Hens to the NCAA Tournament three times.

Volunteer Assistant Coach **Sydney Rhodes-James** and her twin sister, **Sabrina**, shared the field in 2016 and 2017, winning an NCAA Championship in Sydney's freshman season.

elite company

Tara Zollinger currently the fifth-highest active winning percentage in the NCAA of a coach in their second year or higher (.808), and is third for the highest amongst active coaches who have coached at least 100 games (Brooke Good - DIII Messiah University, Sharon Pflueger - DIII TCNJ).

multi-goal madness!

Delaware has scored at least two goals in three consecutive games, matching their one instance of that occurring in 2024. The Blue Hens scored multiple goals in each of their games from Nov. 3-Nov 13, spanning the run to winning the CAA Championship.

they're baaaaaack

Kate Fiest and **Cameron Medinger** return to UD after earning all-conference honors. Fiest recieved First Team All-CAA, while Medinger earned a second team nod.

preseason plaudit

M **Kate Fiest** earned a spot on the 2025 NFHCA Preseason Watchlist, the organization announced August 28.

CAREER GAMES/STARTS

Back	Games	Starts
Iris Bekker	61	60
Cameron Medinger	62	60
Lily Cosner	25	14
Linde van Leeuwen	20	18
Elle Patterson	8	0

Midfield	Games	Starts
Emma Miller	53	15
Alexa Michielsens	42	17
Rachael Whitehead	42	40
Kate Fiest	42	31
Sarah Rigual	38	10
Tetje Williamson	31	10
Katie Clarke	3	2
Ella Cellini	3	0
Brynn String	3	0

Forward	Games	Starts
Noelle Sabbagh	60	47
Lainey Baker	21	0
Izzy Rothwell	11	0
Amanda Rattay	3	0
Charlotte Robertson	3	0
Livia van't Hek	3	0
Lainey Baker	1	0

Goalkeeper	Games	Starts
Kristi Merashoff	41	37
Gabby Prentice	2	1

CURRENT STREAKS

	Consecutive GP/GS	Pos
Iris Bekker	61/60	B
Noelle Sabbagh	46/4	F
Rachael Whitehead	42/31	M/B
Kate Fiest	42/5	M
Sarah Rigual	36/6	M
Alexa Michielsens	29/7	M/F
Lily Cosner	25/0	
Emma Miller	27/3	M
Linde van Leeuwen	20/2	B
Cameron Medinger	9/5	B
Katie Clarke	3/3	F
Tetje Williamson	3/0	
Ella Cellini	3/0	
Livia van't Hek	3/0	
Amanda Rattay	3/0	
Charlotte Robertson	3/0	
Brynn String	3/0	
Gabby Prentice	2/1	
Lainey Baker	1/0	

ON THIS DATE IN DELAWARE FIELD HOCKEY HISTORY...

SEPT

12-14

Delaware is 8-5-1 in games played on September 12, including an eight goal barrage over Monmouth in 2007.

The Hens are 5-5 on September 14 in program history. Allie Mikelson '15 tied the record three defensive saves in a game against Cornell in 2014.

DELAWARE RECORD WHEN...

	2025	ZOLLINGER
Overall	0-3	0-3
Conference	0-0	0-0
Non-conference	0-3	0-3
Playoffs	--	--
Home	0-2	0-2
Away	0-1	0-1
Neutral	0-0	0-0
Current streak	L3	L3
Current home streak	0-2	0-2
Current road streak	0-1	0-1
Current neutral streak	0-0	0-0
Day game	0-3	0-3
Night game	0-0	0-0
August	0-2	0-2
September	0-1	0-1
October	0-0	0-0
November	0-0	0-0
vs. Top 5 teams	0-0	0-0
vs. Top 10 teams	0-0	0-0
vs. Top 25 teams	0-1	0-1
vs. unranked teams	0-2	0-2
On natural grass	0-0	0-0
On artificial surface	0-3	0-3
Scoring first	0-1	0-1
Opponent scores first	0-2	0-2
Leading after 1st	0-1	0-1
Trailing after 1st	0-1	0-1
Tied after 1st	0-1	0-1
Leading at halftime	0-1	0-1
Trailing at halftime	0-1	0-1
Tied at halftime	0-1	0-1
Leading after 3rd	0-1	0-1
Trailing after 3rd	0-1	0-1
Tied after 3rd	0-1	0-1
Overtime	0-1	0-1
Shootout	0-0	0-0
Scoring 0 goals	0-0	0-0
Scoring 1 goal	0-0	0-0
Scoring 2 goals	0-1	0-1
Scoring 3+ goals	0-2	0-2
Allowing 0 goals	0-0	0-0
Allowing 1 goal	0-0	0-0
Allowing 2 goals	0-0	0-0
Allowing 3+ goals	0-3	0-3
Game decided by 1	0-3	0-3
Game decided by 2	0-0	0-0
Game decided by 3+	0-0	0-0
With 1-5 shots	0-0	0-0
With 6-10 shots	0-1	0-1
With 11-15 shots	0-1	0-1
With 16-20 shots	0-1	0-1
With 21+ shots	0-0	0-0
Allowing 1-5 shots	0-0	0-0
Allowing 6-10 shots	0-1	0-1
Allowing 11-15 shots	0-0	0-0
Allowing 16-20 shots	0-2	0-2
Allowing 21+ shots	0-0	0-0
Leading in shots	0-1	0-1
Trailing in shots	0-2	0-2
Tied in shots	0-0	0-0
Leading in corners	0-2	0-2
Trailing in corners	0-1	0-1
Tied in corners	0-0	0-0
Leading in saves	0-1	0-1
Trailing in saves	0-2	0-2
Tied in saves	0-0	0-0
Received yellow card	0-2	0-2
Opp. received yellow	0-2	0-2
Received red card	0-0	0-0
Opp. received red card	0-0	0-0
Black on black uniform	0-0	0-0
Blue on blue uniform	0-2	0-2
White on white uniform	0-0	0-0

destined to be a hen

Blue Hens Head Coach **Tara Zollinger** was coached by **Missy Meharg** '85 as an undergraduate at the University of Maryland and took her first collegiate coaching job under **Ange Bradley** '89 at Syracuse in 2013.

familiar (masked) face

GK **Kristi Merashoff** joined the Fightin' Blue Hens for her final season of collegiate action and to pursue a master's degree in Business Analytics & Information Management. Previously, she was the goalie at former Coastal Athletic Association (CAA) foe, Northeastern. Merashoff won both games she was in the cage for against Delaware in her career, saving 15-of-17 shots on goal (.882).

back home

Delaware hired volunteer assistant coach **Sydney Rhodes-James** in July. The program alum returns to Newark after four seasons as an assistant coach at Penn. Rhodes-James appeared in 50 games in goal at Delaware, including nine in 2016, the year in which the Blue Hens captured the national championship.

record watch

Cameron Medinger is just five defensive saves away and six from breaking the all-time program record of 15, set in 2015 by **Allie Mikelson**.

TEAM RECORDS

Most goals scored in a game
10, twice 8/28/15
at Central Michigan

Most assists in a game
10 8/28/15
at Central Michigan

Most Points in a game
30, 10 goals, 10 assists 8/28/15
at Central Michigan

INDIVIDUAL RECORDS TO KNOW

Most goals scored in a game
5, Casey Howard, vs Brown 9/6/09

Most assists in a game
Three with 3, Femke Strein vs. JMU 11/8/19

Most Points in a game
12, Casey Howard, vs Brown 9/6/09

Most Saves in a game
28, Kim Lockbaum, vs. Maryland 9/13/94

LAST TIME A BLUE HEN...

Multiple goals in a game
Valentina Martorell, at Monmouth 11/10/24

Hat trick in a game
Kiki Oudshoorn vs. Columbia 9/3/23

Scored on a penalty stroke
Iris Bekker vs. California 8/31/25

Had multiple assists in a game
Iris Bekker vs. California 8/31/25

Had three assists in a game
Berber Bakermans vs. Drexel 11/6/22

5 points in a game
Kiki Oudshoorn vs. Columbia (6) 9/3/23

6 points in a game
Kiki Oudshoorn vs. Columbia (6) 9/3/23

8 points in a game
Lotte de Koning vs. James Madison 11/8/19

8 shots in a game
Julia Duffhuis vs. Northeastern 10/6/23

Multiple defensive saves in a game
Cameron Medinger at American 9/22/24

10 saves in a game
Cecile van Eijck at UNC (17) 11/15/24

Solo GK shutout
Cecile van Eijck vs. Fairfield 11/3/24

ZOLLINGER ALL-TIME VS DI OPPONENTS

American	0-0	Ohio State	0-0	William & Mary	0-0
Bucknell	0-0	Old Dominion	0-0		
Cal	0-1	Penn	0-0		
Drexel	0-0	Penn State	0-1		
Lock Haven	0-0	Saint Joseph's	0-0		
Kent State	0-0	Temple	0-1		
Lafayette	0-0	Wake Forest	0-0		
Northwestern	0-0	Towson	0-0		

2025 DELAWARE NUMERICAL ROSTER

#	NAME	YR.	POS.	HT.	HOMETOWN/HIGH SCHOOL (PREV. SCHOOL)
1	Lily Cosner	So.	B	5-2	Doylestown, Pa. / Central Bucks West
2	Emma Miller	Sr.	M	5-6	Mount Joy, Pa. / Donegal
3	Rachael Whitehead	Jr.	M	5-9	Hockessin, Del. / The Tatnall School
4	Cameron Medinger	Sr.	B	5-7	Baltimore, Md. / Garrison Forrest School
5	Amanda Rattay	Fr.	F	5'6	Newark, Del. / Newark Charter
6	Tetje Williamson	Jr.	M	5-4	Oley, Pa. / Oley Valley
7	Linde van Leeuwen	So.	B	5'6	Heemstede, Netherlands / Lyceum Sancta Maria (Bryant)
8	Iris Bekker	Sr.	B	5-8	Zuidlaren, Netherlands / GHHC Groningen (Kent State)
10	Ella Cellini	Fr.	M	5'5	Phoenixville, Pa. / Villa Maria Academy
11	Elle Patterson	Jr.	B	5-7	Ashburn, Va. / Independence
12	Charlotte Robertson	Fr.	M/F	5'6	Edinburgh, Scotland / Millfield School
13	Ashlee Bucksar	Jr.	M/F	5'7	North Wales, Pa. / William Penn Charter (Liberty)
14	Brynn String	Fr.	M	5'7	Felton, Del. / Lake Forest
15	Sarah Rigual	Jr.	M	5-3	Fredericksburg, Va. / James Monroe
17	Kate Fiest	Jr.	M	5-6	Yorktown, Va. / Tabb
18	Livia van't Hek	Fr.	F	5'8	Amsterdam, The Netherlands / St. Nicolasslyceum
19	Carmella Gannon	Fr.	M	5'9	Felton, Del. / Lake Forest
20	Izzy Rothwell	Sr.	F	5-7	Sparks, Md. / The Bryn Mawr School
21	Alexa Michielsen	Gr.	M/F	5-4	Bloemendaal, Netherlands / Intl. School of Amsterdam (Shippensburg)
22	Noelle Sabbagh	Sr.	F	5-3	Lewes, Del. / Cape Henlopen
23	Kasey Rieger	Fr.	F	4'11	Langhorne, Pa. / Neshaminy
24	Katie Clarke	Fr.	M	5'8	Purcellville, Va. / Loudoun Valley
25	Lainey Baker	Sr.	F	5-7	Louisville, Ky. / Sacred Heart Academy
86	Gabby Prentice	Fr.	GK	5'8	Arnold, Md. / Archbishop Spalding
99	Kristi Merashoff	Gr.	GK	5'6	Towson, Md. / Towson HS (Northeastern)

Head Coach: Tara Zollinger (Maryland '13) - first season at UD, eighth overall

Assistant Coach: Ally Mooney (Shippensburg '18) - first season

Assistant Coach: Devin Kinzel (Temple '24) - first season

Volunteer Assistant Coach: Sydney Rhodes-James (Delaware '19) - first season

ALPHABETICAL

#	NAME	POS.
25	Lainey Baker	F
8	Iris Bekker	B
13	Ashlee Bucksar	M/F
10	Ella Cellini	M
24	Katie Clarke	M
1	Lily Cosner	B
17	Kate Fiest	M
19	Carmella Gannon	M
18	Livia van't Hek	F
7	Linde van Leeuwen	B
4	Cameron Medinger	B
99	Kristi Merashoff	GK
21	Alexa Michielsen	M/F
2	Emma Miller	M
11	Elle Patterson	B
86	Gabby Prentice	GK
5	Amanda Rattay	F
23	Kasey Rieger	F
15	Sarah Rigual	M
12	Charlotte Robertson	M/F
20	Izzy Rothwell	F
22	Noelle Sabbagh	F
14	Brynn String	M
3	Rachael Whitehead	M
6	Tetje Williamson	M

PRO-NUN-SEE-AY-SHUNS

PLAYERS & COACHES

#4	Cameron Medinger	med-in-GRR
#5	Amanda Rattay	RUH-tay
#6	Tetje Williamson	TAT-chee
#7	Linde van Leeuwen	linda von lay-WIN
#8	Iris Bekker	EE-ris
#15	Sarah Rigual	rig-AL
#17	Kate Fiest	like feisty
#18	Livia van't Hek	LIV-ya von tek
#21	Alexa Michielsen	meek-YULE-son
#22	Noelle Sabbagh	SUH-bahh
#23	Kasey Rieger	RIGOR
#99	Kristi Merashoff	MARE-uh-shoff

HC	Tara Zollinger	zoll-in-GRR
AC	Ally Mooney	moon-EE
AC	Devin Kinzel	kin-zell

TOWNS

Hockessin	HO-kess-in
Oley	ol-EE
Heemstede	heem-STED
Zuidlaren	ZOW-d-lard-in
Bloemendaal	BLUE-min-doll
Lewes	LOU-is

HEAR OUR NAMES



2025 DELAWARE ROSTER BREAKDOWN

BACKS (5)

1	Lily Cosner	B	So.	5-2	Doylestown, Pa. / Central Bucks West
4	Cameron Medinger	B	Sr.	5-7	Baltimore, Md. / Garrison Forest School
7	Linde van Leeuwen	B	So.	5-6	Heemstede, Netherlands / Lyceum Santa Maria (Bryant)
8	Iris Bekker	B	Sr.	5-8	Zuidlaren, Netherlands / GHHC Groningen (Kent State)
11	Elle Patterson	B	Jr.	5-7	Ashburn, Va. / Independence

FORWARDS (6)

5	Amanda Rattay	F	Sr.	5-6	Newark, Del. / Newark Charter
18	Livia van't Hek	F	So.	5-8	Amsterdam, Netherlands / St. Nicolaaslyceum
20	Izzy Rothwell	F	Sr.	5-7	Sparks, Md. / The Bryn Mawr School
22	Noelle Sabbagh	F	Sr.	5-3	Lewes, Del. / Cape Henlopen
23	Kasey Rieger	F	Fr.	4-11	Langhorne, Pa. / Neshaminy
25	Lainey Baker	F	Sr.	5-7	Louisville, Ky. / Sacred Heart Academy

MIDFIELDERS (12)

2	Emma Miller	M	Sr.	5-5	Mount Joy, Pa. / Donegal
3	Rachael Whitehead	M	Jr.	5-9	Hockessin, Del. / The Tatnall School
6	Tetje Williamson	M	Jr.	5-4	Oley, Pa. / Oley Valley
10	Ella Cellini	M	Fr.	5-5	Phoenixville, Pa. / Villa Maria Academy
12	Charlotte Robertson	M/F	Fr.	5-6	Edinburgh, Scotland / Millfield School
13	Ashlee Bucksar	M/F	Jr.	5-7	Philadelphia, Pa. / William Penn Charter (Liberty)
14	Brynn String	M	Fr.	5-7	Felton, Del. / Lake Forest
15	Sarah Rigual	M	Jr.	5-3	Fredericksburg, Va. / James Monroe
17	Kate Fiest	M	Jr.	5-6	Yorktown, Va. / Tabb
19	Carmella Gannon	M	Fr.	5-9	Felton, Del. / Lake Forest
21	Alexa Michielsens	M/F	Gr.	5-4	Bloemendaal, Netherlands / Intl. School of Amsterdam (Shippensburg)
24	Katie Clarke	M	Fr.	5-8	Purcellville, Va. / Loudoun Valley

GOALKEEPERS (2)

86	Gabby Prentice	GK	Fr.	5-8	Arnold, Md. / Archbishop Spalding
99	Kristi Merashoff	GK	Gr.	5-6	Towson, Md. / Towson HS (Northeastern)

GEOGRAPHICAL

Delaware (5)

3	Rachael Whitehead	M
5	Amanda Rattay	F
14	Brynn String	M
19	Carmella Gannon	M
22	Noelle Sabbagh	F

Kentucky (1)

25	Lainey Baker	F
----	--------------	---

Maryland (4)

4	Cameron Medinger	B
20	Izzy Rothwell	F
86	Gabby Prentice	GK
99	Kristi Merashoff	GK

Netherlands (4)

7	Linde van Leeuwen	B
8	Iris Bekker	B
18	Livia van't Hek	F
21	Alexa Michielsens	M

Pennsylvania (6)

1	Lily Cosner	B
2	Emma Miller	M
6	Tetje Williamson	M
10	Ella Cellini	M
13	Ashlee Bucksar	M/F
23	Kasey Rieger	F

Scotland (1)

12	Charlotte Robertson	M
----	---------------------	---

Virginia (4)

11	Elle Patterson	B
15	Sarah Rigual	M
17	Kate Fiest	M
24	Katie Clarke	M

302 BUILT

For the first time since the 2012 season, Delaware field hockey rosters five players who hail from The First State.

Jacki Coveleski, Morgan Hudson, Hannah Pepper, Rebecca Pepper, and Kasey Prettyman made up the five who stayed in-state to play for Delaware in that season.

In 2025, all three Delaware counties (New Castle, Kent, and Sussex) are represented by field hockey student-athletes.

ROSTER BY CLASS

GRADUATES (2)

Alexa Michielsens
Kristi Merashoff

SENIORS (6)

Lainey Baker
Iris Bekker
Cameron Medinger
Emma Miller
Izzy Rothwell
Noelle Sabbagh

JUNIORS (6)

Ashlee Bucksar
Kate Fiest
Elle Patterson
Sarah Rigual
Rachael Whitehead
Tetje Williamson

SOPHOMORES (2)

Lily Cosner
Linde van Leeuwen

FRESHMEN (9)

Ella Cellini
Katie Clarke
Carmella Gannon
Gabby Prentice
Amanda Rattay
Kasey Rieger
Charlotte Robertson
Brynn String
Livia van't Hek



HEAD COACH TARA ZOLLINGER

Hometown: Jeannette, Pa.
High School: Hempfield Area
Alma Mater: Maryland '13
Degree: Sociology
Year in Coaching: 12th in 2025
 (First as head coach at UD)

NOTABLE HIGHLIGHTS

3x Division I National Champ. ('10, '11, '15)
 3x Division II National Champ. ('17, '18, '21)
 Division II Runner-Up (2022)
 6x Division II Semifinal Appearances
 ('17, '18, '21, '22, '23, '24)
 4x NFHCA National Staff of the Year
 2x PSAC Coach of the Year

AS DELAWARE HEAD COACH

Year	1st in 2025
Overall Record	0-3
Home	0-2
Away/Neutral	0-1
vs. Top 25 Teams	0-1
vs. Top 10/Top 5 Teams	0-0/0-0
In Conference Games	0-0

ZOLLINGER YEAR-BY-YEAR

YEAR	W-L	PCT.	CONF
2017	17-4	.810	9-1
2018	19-4	.826	8-2
2019	12-6	.667	8-2
2021	20-0	1.000	10-0
2022	16-4	.800	7-2
2023	15-5	.750	8-1
2024	19-2	.905	9-0
2025	0-3	.000	0-0
TOTAL	0-3	.000	0-0
CAREER	118-28	.808	59-8

HEAD COACH TARA ZOLLINGER

Three-time Division II national championship winning head coach Tara Zollinger enters her first season as the head coach for Delaware field hockey after her hire in March of 2025.

"Tara has a proven track record of winning and competing at the highest levels," Skolnick said. "We are excited to welcome her, her husband Eyoel, and children Isra and Elias to the Blue Hen family. It was clear that she is committed to providing a great student-athlete experience and has a strong vision for player development. We are all looking forward to seeing Tara continue the rich history of success of our field hockey program."

Zollinger comes to Newark after spending the previous eight seasons (2017-24) as the head coach at DII Shippensburg in Pennsylvania where she won national championships in 2017, 2018, and 2021. She also led the Raiders to the 2022 national title game and semifinal appearances in 2023 and 2024.

A Jeannette, Pennsylvania native, Zollinger boasts a 118-25 career record, including 59-8 in conference play, and 10-3 in NCAA Tournaments. She has directed four National Field Hockey Coaches Association (NFHCA) Regional Coaching Staffs of the Year, and a trio of NFHCA National Coaching Staffs of the Year.

Over the course of her eight seasons in Shippensburg, Zollinger has produced 41 all-league players, and 23 All-Americans. She's claimed four regular season Pennsylvania State Athletic Conference (PSAC) titles and a pair of conference tournament titles.

Prior to taking the reins for the Raiders, she spent four seasons (2013-16) as an assistant coach at Syracuse where she worked for former Blue Hen and UD Athletics Hall of Fame inductee (2005) Ange Bradley. She helped Bradley and the Orange to a national championship, ACC regular season title, and both NFHCA regional and national coaching staff of the year awards.

At Syracuse, Zollinger was a part of one the school's most successful seasons. She helped instruct a 2015 team that posted a perfect 16-0 regular-season record – the first team in 25 seasons to achieve the feat. The No. 1-ranked Orange also

swept the 2015 ACC postseason awards, becoming the first team to do so since North Carolina in 1994.

A two-time PSAC Coach of the Year, Zollinger also serves as a coach with USA Field Hockey. She's held a number of roles including nexus coach (2021-25), supplemental coach for the women's U21 team (2024), high performance mid-atlantic region coach (2017-19), talent selection (2013-15, 2018, 2021-24), U14 futures national championship coach (2016-17), futures head coach and director (2014-17), and futures assistant coach (2010-14).

On the national level, Zollinger served a two-year term (2017-18 and 2018-19) as the field hockey representative on the coaches' council for WeCOACH (formerly Alliance of Women Coaches). She was one of 15 coaches from across the country spanning all three NCAA divisions that served on the council, serving as an ambassador in coaching communities and networks. At the completion of her term, Zollinger graduated from WeCOACH Academy 2.0.

She played college field hockey for former Blue Hen and UD Athletics Hall of Famer (1998) Missy Meharg at Maryland. For the Terps, Zollinger was an attacker who won two NCAA Championships (2010, 2011) and two ACC Championships (2009, 2010) – reaching the Final Four in all four of her collegiate seasons. She received Maryland's Kateri Simon Award in 2012, recognizing an athlete that persevered in times of adversity and displayed courage while bringing positive energy to all team sessions.

Zollinger earned her undergraduate degree in sociology in 2013 and was an active member of the Student-Athlete Advisory Committee (SAAC). She was also a development assistant with the University of Maryland Terrapin Club, coordinating and organizing member and donor events.

She also holds two master's degrees in sport administration (2019) and sport and exercise psychology (2018) from Lock Haven.

Zollinger and her husband Eyoel have two children – Isra and Elias.

ZOLLINGER'S COACHING HISTORY

YEAR	SCHOOL	POSITION
2025-Pres.	Delaware	Head Coach
2017-24	Shippensburg	Head Coach
2013-16	Syracuse	Assistant Coach

SUPERLATIVES UNDER TARA ZOLLINGER

Most Goals	4, vs. Temple & Cal (8/29 & 8/31/25)
Goals Allowed	5, vs. Temple & Cal (8/29 & 8/31/25)
Shots	16, vs. Temple & Penn State (8/29/25 & 9/5/25)
Shots Allowed	17, vs. Cal (8/31/25)
Shots on Goal	10, vs. Temple (8/29/25)
Saves	4, vs. Cal (9/5/25)

ASSISTANT COACHES



ALLY MOONEY
ASSISTANT COACH

Mooney enters her first season as an assistant coach with Delaware field hockey in 2025 after being hired in April of 2025.

Mooney comes to Newark after spending the previous three seasons under Zollinger at DII Shippensburg, where she served as the program's defensive coordinator. She led a unit that sat atop the nation in goals against average (0.80) and scoring margin (+2.71), while sitting third in shutouts per game (0.48).

In charge of the Raider goalkeepers, Mooney oversaw the emergence of the NCAA Division II leader in save percentage (.821) and helped guide the Raiders to the PSAC Championship game and the NCAA Division II Semifinals during the 2023 season.

Mooney joined the coaching staff at her alma mater in 2022, and helped guide the Raiders to their second-consecutive NCAA Division II National Championship Game appearance.

Mooney returned to Shippensburg after spending three seasons as an assistant coach at Appalachian State University, contributing to numerous accomplishments with the Mountaineers.

As a student-athlete at Shippensburg, Mooney was a starting goalkeeper who helped the Raiders win three consecutive NCAA Division II National Championships from 2016-18. She registered a 68-16 record and had an .816 save percentage, recording 24 shutouts between the posts and allowing less than a goal per game over the course of her career.

Mooney was a two-time team captain and earned multiple awards during her collegiate career. Along with three national championships, Mooney was named an NFCA All-American in 2014 and 2016. As a freshman, she earned a spot on the Synapse Sports All-Rookie Team after allowing just 0.76 goals per game.

A native of Spring City, Pa., Mooney earned a bachelor's degree in exercise science with a minor in coaching in December 2018 and her master's degree from Shippensburg in 2023 in organizational development and leadership with a concentration in business.



DEVIN KINZEL
ASSISTANT COACH

Kinzel will begin her first campaign as an assistant coach with the Delaware field hockey program in the 2025 season.

Kinzel spent four seasons on the Temple University field hockey team and assumed a role as a volunteer assistant with her alma mater beginning in January of 2025.

During her playing career, she was a team captain her senior season and earned All-BIG EAST Second Team honors while helping the Owls achieve their furthest postseason run since 2015.

Her stint as a coach with her former team allowed her to assist with team management and game preparation, as well as mentoring players while encouraging academic and athletic success.



SYDNEY RHODES-JAMES
VOLUNTEER ASSISTANT COACH

Rhodes-James joins the Delaware field hockey staff for her first season as a volunteer assistant coach in 2025.

Rhodes-James returns to Newark after graduating in 2019 and making multiple coaching stops along the way.

The Delaware alum was a five-year goalie for the Blue Hens, who made 50 appearances, including nine during the Hen's run to capturing the 2016 NCAA Division I Championship. She graduated in 2019 with a bachelor's degree in health behavior science from Delaware's College of Health Sciences.

Rhodes-James started her coaching experience working with Harford Hockey Organization (H2O) in Harford County, Md., in 2014, a position she held through 2021.

Her collegiate coaching experience includes time as an assistant coach with the University of Pennsylvania, where she spent four seasons from 2021-24 with a specialized focus in coaching the goalkeepers and organizing team logistics.

During that time, Penn was able to have a goalie earn First Team All-Ivy League under Rhodes-James' tutelage.

After leaving Philadelphia, Rhodes-James reconnected with H2O in January 2025, becoming the program's co-director, head coach, and head goalkeepers coach for players aged 10-19.

SUPPORT STAFF

Kate Rudolph // Sport Administrator

Bridget Burger // Academic Advisor

Madison Feeser // Athletic Trainer

Katie Bertolet // Strength & Conditioning Coach

Hanalyn Podgurski // Nutritionist

Christina Rasnake // Director, Sports Science & Analytics

Andrew Reisman, MD // Chief Medical Officer

Noah Barraclough // Communications Contact

Reese Momorella // Team Manager

Nico Campbell // Practice Player

COACHES IN COLLEGE



TARA ZOLLINGER

MARYLAND '13

Quick Facts: Played in 19 games as a member of the Terrapins... Coached by Delaware field hockey program alum, Missy Meharg '85... Part of the 2010 and 2011 Division I National Championship teams... Appeared in a 4-0 win at Delaware in her sophomore season.... Recorded an assist against Rutgers in her senior year... Maryland played to a 19-0 record in Zollinger's games played.



ALLY MOONEY

SHIPPENSBURG '18

Quick Facts: Started 84 games in goal for Shippensburg across four seasons... Was a two-time national champion, as well as a two-time NFHCA All-American... Held a 68-16 record with 27 shutouts, in addition to a .816 save percentage in goal... Led the NCAA in GAA (0.43) and save percentage (.894) in 2016.



DEVIN KINZEL

TEMPLE '24

Quick Facts: Played four seasons for the Owls... Played 77 games, starting 70... Scored 14 goals and dished out nine assists, including a career high seven goals in 2024... Earned BIG EAST All-Conference Second Team in her senior season.



SYDNEY RHODES-JAMES

DELAWARE '19

Quick Facts: Played 50 games in cage for the Blue Hens from 2015-19... Was part of the 2016 Division I NCAA Championship team... Earned All-CAA first team in her final two seasons... Started her final 35 games of her career, playing to a 24-11 record.



delaware

STARTERS BY GAME

OPP	B	B	B	M	M	M	F	F	F	B/M/F	GK
Temple	Bekker	Medinger	Williamson	Fiest	Rigual	Clarke	Michielsens	Sabbagh	Miller	Whitehead	Merashoff
Cal	Bekker	Medinger	van Leeuwen	Fiest	Rigual	Clarke	Michielsens	Sabbagh	Miller	Whitehead	Merashoff
at Penn State	Bekker	Medinger	van Leeuwen	Fiest	Rigual	Clarke	Michielsens	Sabbagh	Miller	Whitehead	Prentice
Kent State											
Bucknell											
Northwestern											
at Lock Haven											
at Saint Joseph's											
William & Mary											
Ohio State											
at Towson											
at Drexel											
at Wake Forest											
Old Dominion											
American											
Lafayette											
at Penn											



delaware

MISCELLANEOUS GAME INFO

OPP	DAY/NIGHT GAME	FIRST POSS.	LENGTH	JERSEY	RESULT
Temple	Day	Temple	1:50	Blue	Loss, 5-4
Cal	Day	Cal	1:50	Blue	Loss, 5-4
at Penn State	Day	Penn State	2:12	White	Loss, 3-2 (2OT)
Kent State					
Bucknell					
Northwestern					
at Lock Haven					
at Saint Joseph's					
William & Mary					
Ohio State					
at Towson					
at Drexel					
at Wake Forest					
Old Dominion					
American					
Lafayette					
at Penn					



delaware

WEEKLY STATISTICAL LEADERS

OPP	GOALS	SHOTS	ASSISTS	SAVES
Temple	1, Bekker, Fiest, Miller, Whitehead	3, Michielsen	1, Fiest, Miller, Rigual	0, Merashoff
Cal	2, Miller	6, Bekker	2, Bekker	3, Prentice
at Penn State	1, Fiest, Michielsen	3, Fiest	1, Bekker, Sabbagh	4, Prentice
Kent State				
Bucknell				
Northwestern				
at Lock Haven				
at Saint Joseph's				
William & Mary				
Ohio State				
at Towson				
at Drexel				
at Wake Forest				
Old Dominion				
American				
Lafayette				

delaware

SCORING PLAYS

GOAL SCORER	ASSIST(S)	OPPONENT	TIME & QUARTER	SEASON GOAL NUM.
Iris Bekker	Whitehead, Miller	Temple	14:05, Second Quarter	1
Emma Miller	--	Temple	11:42, Second Quarter	1
Kate Fiest	--	Temple	4:53, Third Quarter	1
Rachael Whitehead	Miller	Temple	2:28, Fourth Quarter	1
Iris Bekker	--	California	13:13, First Quarter	2
Emma Miller	Clarke	California	4:41, Third Quarter	2
Emma Miller	Bekker	California	0:00, Third Quarter	3
Livia van't Hek*	Bekker	California	5:28, Fourth Quarter	1
Kate Fiest	Bekker	Penn State	8:00, Third Quarter	2
Alexa Michielsen	Sabbagh	Penn State	0:43, Fourth Quarter	1

*goal was tipped off initial shot

delaware

2025 SEASON STATS

Record:	Overall	Home	Away	Neutral
All Games	0-3	0-2	0-1	0-0

Date	Opponent	W/L	Score	Att.
8/29/2025	TEMPLE	L	4-5	319
8/31/2025	CALIFORNIA	L	4-5	284
9/5/2025	at Penn State	L	2-3	440

Team Statistics	DELAWARE	OPP
SHOT STATISTICS		
Goals-Shot Att.	10-39	13-41
Goals Per Game	3.33	4.33
Shot Pct.	0.256	0.317
Shots on Goal-Att.	25-39	22-41
SOG Pct.	0.641	0.537
Shots/Game	13.0	13.7
PENALTY CORNERS	21	22
PENALTY STROKES	1-2	0-0
PENALTIES		
Yellow Cards	2	4
Red Cards	0	0
ATTENDANCE		
Total	603	440
Dates-Avg Per Date	2/301	1/440
Neutral Site #-Avg	0/	

#	Player	GP	G	A	PTS	SH	SH%	SOG	SOG%	YC-RC	GW	PK-ATT	DS
8	Bekker, Iris	3	2	3	7	9	0.222	6	0.667	0-0	0	1-2	0
2	Miller, Emma	3	3	1	7	5	0.600	4	0.800	0-0	0	0-0	0
17	Fiest, Kate	3	2	1	5	6	0.333	6	1.000	0-0	0	0-0	0
	Hek, Livia van't	3	1	0	2	2	0.500	1	0.500	0-0	0	0-0	0
21	Michielsen, Alexa	3	1	0	2	5	0.200	2	0.400	1-0	0	0-0	0
3	Whitehead, Rachael	3	1	0	2	2	0.500	2	1.000	0-0	0	0-0	0
24	Clarke, Katie	3	0	1	1	2	0.000	2	1.000	0-0	0	0-0	0
15	Rigual, Sarah	3	0	1	1	3	0.000	1	0.333	0-0	0	0-0	0
22	Sabbagh, Noelle	3	0	1	1	2	0.000	0	0.000	1-0	0	0-0	0
25	Baker, Lainey	1	0	0	0	0	0.000	0	0.000	0-0	0	0-0	0
10	Cellini, Ella	3	0	0	0	0	0.000	0	0.000	0-0	0	0-0	0
1	Cosner, Lily	3	0	0	0	1	0.000	1	1.000	0-0	0	0-0	1
	Leeuwen, Linde van	3	0	0	0	2	0.000	0	0.000	0-0	0	0-0	0
4	Medinger, Cameron	3	0	0	0	0	0.000	0	0.000	0-0	0	0-0	0
99	Merashoff, Kristi	2	0	0	0	0	0.000	0	0.000	0-0	0	0-0	0
86	Prentice, Gabby	2	0	0	0	0	0.000	0	0.000	0-0	0	0-0	0
5	Rattay, Amanda	3	0	0	0	0	0.000	0	0.000	0-0	0	0-0	0
12	Robertson, Charlotte	3	0	0	0	0	0.000	0	0.000	0-0	0	0-0	0
20	Rothwell, Izzy	2	0	0	0	0	0.000	0	0.000	0-0	0	0-0	0
14	String, Brynn	3	0	0	0	0	0.000	0	0.000	0-0	0	0-0	0
6	Williamson, Tetje	3	0	0	0	0	0.000	0	0.000	0-0	0	0-0	1
Total		3	10	8	28	39	0.256	25	0.641	2-0	0	1-2	2
Opponent		3	13	9	35	41	0.317	22	0.537	4-0	3	0-0	0

#	Goalie	GP	MIN	GA	GAA	SAVE	PCT	W-L-T	SHO
99	Merashoff, Kristi	2	92:50	10	6.46	1	0.091	0-2-0	0/0
86	Prentice, Gabby	2	103:37	3	1.74	6	0.667	0-1-0	0/0
Total		3	196:27	13	3.97	7	0.350	0-3-0	0
Opponents		3	196:27	10	3.05	15	0.600	--	0

Goals by Period	1st	2nd	3rd	4th	OT	OT2	Total
Delaware	1	2	4	3	0	0	10
Opponents	1	4	3	4	0	1	13

Shots by Period	1st	2nd	3rd	4th	OT	OT2	Total
Delaware	9	9	13	8	0	0	39
Opponents	6	10	10	12	0	3	41

Saves by Period	1st	2nd	3rd	4th	OT	OT2	Total
Delaware	1	1	3	3	0	1	9
Opponents	5	2	5	3	0	0	15

Corners by Period	1st	2nd	3rd	4th	OT	OT2	Total
Delaware	1	5	6	9	0	0	21
Opponents	4	4	7	5	0	2	22

Fouls by Period	1st	2nd	3rd	4th	OT	OT2	Total
Delaware	21	21	25	20	0	0	87
Opponents	20	26	13	20	0	0	79

NCAA RANKINGS

Statistic	National Rank	Conference Rank	Value	National Leader	Value	Conference Leader	Value
Assists Per Game (75 ranked)	23	2	2.67	Syracuse	6.25	UC Davis	3.00
Defensive Saves (15 ranked)	8	1	2	Lafayette Richmond	4 4	Delaware	2
Goals Against Average (78 ranked)	67	2	3.97	Massachusetts Northwestern	0.00 0.00	UC Davis	2.87
Goals Per Game (78 ranked)	16	1	3.33	Monmouth	7.00	Delaware	3.33
Penalty Corners Per Game (79 ranked)	26	2	7.00	Providence	11.00	UC Davis	7.33
Points Per Game (79 ranked)	16	1	9.33	Monmouth	19.75	Delaware	9.33
Save Percentage (79 ranked)	78	3	0.350	Massachusetts Northwestern	1.000 1.000	Queens (NC)	0.638
Saves Per Game (79 ranked)	63	3	2.33	Merrimack	17.67	Queens (NC)	10.00
Scoring Average (79 ranked)	21	1	3.05	Monmouth	7.00	Delaware	3.05
Scoring Margin (45 ranked)				Monmouth	5.50		
Shutouts Per Game (22 ranked)				Northwestern	1.00		
Winning Percentage (70 ranked)	70	2	0.000	16 teams tied	1.000	UC Davis	0.667

Statistic	Player	National Rank	Conference Rank	Value	National Leader	Value	Conference Leader	Value
Assists Per Game (63 ranked)	Iris Bekker Kathryn Clarke Kate Fiest Emma Miller Sarah Rigual	19 63 63 63 63	1 2 2 2 2	1.00 0.50 0.50 0.50 0.50	Pati Strunk, Syracuse	4.00	Iris Bekker, Delaware	1.00
Defensive Saves (1 ranked)					Jade Shabo, Merrimack	3		
Goalie Win-Loss Pct (41 ranked)					27 players tied	1.000	Addison Collingwood, UC Davis	0.500
Goals Against Average (77 ranked)	Krista Merashoff	72	3	6.46	12 players tied	0.00	Addison Collingwood, UC Davis	2.53
Goals Per Game (83 ranked)	Emma Miller Iris Bekker Kate Fiest Rachael Whitehead Livia van 't Hek	7 20 83 83 83	1 2 5 5 5	1.50 1.00 0.50 0.50 0.50	Makenna Webster, Ohio St. Bo van Kempen, Syracuse	4.50 4.50	Emma Miller, Delaware	1.50
Points Per Game (130 ranked)	Emma Miller Iris Bekker Kate Fiest Rachael Whitehead Livia van 't Hek	9 16 94 130 130	1 2 5 6 6	3.50 3.00 1.50 1.00 1.00	Makenna Webster, Ohio St. Bo van Kempen, Syracuse	9.50 9.50	Emma Miller, Delaware	3.50
Save Percentage (71 ranked)	Krista Merashoff	71	3	0.091	10 players tied	1.000	Addison Collingwood, UC Davis	0.667
Saves Per Game (68 ranked)	Krista Merashoff	68	3	0.50	Abby Boggs, La Salle Isabelle Gardiner, Merrimack	18.00 18.00	Addison Collingwood, UC Davis	5.00

delaware TV ROSTER



1

LILY
COSNERSophomore
B | 5-2
Doylestown, Pa.
Central Bucks West

2

EMMA
MILLERSenior
M | 5-5
Mount Joy, Pa.
Donegal HS

3

RACHAEL
WHITEHEADJunior
M | 5-9
Hockessin, Del.
The Tatnall School

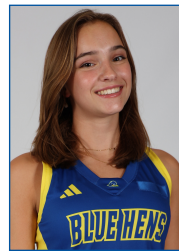
4

CAMERON
MEDINGERSenior
B | 5-7
Baltimore, Md.
Garrison Forest School

5

AMANDA
RATTAYFreshman
F | 5-6
Newark, Del.
Newark Charter

6

TETJE
WILLIAMSONJunior
M | 5-4
Oley, Pa.
Oley Valley

7

LINDE
VAN LEEUWENSophomore
B | 5-6
Heemstede, Netherlands
Lyceum Sancta Maria
(Bryant)

8

IRIS
BEKKERSenior
B | 5-8
Zuidlaren, Netherlands
GHHC Groningen
(Kent State)

10

ELLA
CELLINIFreshman
M | 5-5
Phoenixville, Pa.
Villa Maria Academy

11

ELLE
PATTERSONJunior
B | 5-7
Ashburn, Va.
Independence HS

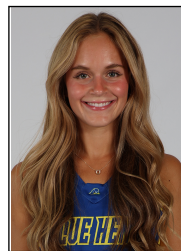
12

CHARLOTTE
ROBERTSONFreshman
M/F | 5-6
Edinburgh, Scotland
Millfield School

13

ASHLEE
BUCKSARJunior
M/F | 5-7
North Wales, Pa.
Penn Charter (Liberty)

14

BRYNN
STRINGFreshman
M | 5-7
Felton, Del.
Lake Forest

15

SARAH
RIGUALJunior
M | 5-3
Fredericksburg, Va.
James Monroe

17

KATE
FIESTJunior
M | 5-6
Yorktown, Va.
Tabb HS

18

LIVIA
VAN'T NEKFreshman
F | 5-8
Amsterdam, Netherlands
St. Nicolasaslyceum

delaware TV ROSTER



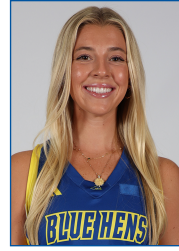
19
CARMELLA
GANNON
Freshman
M | 5-9
Felton, Del.
Lake Forest



20
IZZY ROTHWELL
Senior
F | 5-7
Sparks, Md.
Bryn Mawr School



21
ALEXA
MICHIENSEN
Graduate Student
M/F | 5-4
Bloemendaal, Netherlands
Int. School of Amsterdam
(Shippensburg)



22
NOELLE
SABBAGH
Senior
F | 5-3
Lewes, Del.
Cape Henlopen HS



23
KASEY RIEGER
Freshman
F | 4-11
Langhorne, Pa.
Neshaminy



24
KATIE
CLARKE
Freshman
M | 5-8
Purcellville, Va.
Loudoun Valley



25
LAINÉY
BAKER
Senior
F | 5-7
Louisville, Ky.
Sacred Heart Academy



86
GABBY
PRENTICE
Freshman
GK | 5-8
Arnold, Md.
Archbishop Spalding



99
KRISTI
MERASHOFF
Graduate Student
GK | 5-6
Towson, Md.
Towson HS



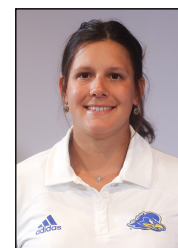
TARA
ZOLLINGER
Head Coach
1st season
Maryland '13



ALLY
MOONEY
Assistant
Coach
1st season
Shippensburg '18



DEVIN
KINZEL
Assistant
Coach
1st season
Temple '24



SYDNEY
RHODES-JAMES
Volunteer
Assistant Coach
1st season
Delaware '19