



# DELAWARE FIGHTIN' BLUE HENS

## WOMEN'S SOCCER GAME NOTES

a new era.



Nick Vuylsteke, Associate Director Communications & Creative Services | 586-262-7414 | nickv@udel.edu

### SERIES HISTORY

All Time.....	17-11-5
Streak.....	T3
At Home.....	9-4-3
On the Road.....	8-6-2
Largest Win.....	4-0 - 9/29/90
Largest Loss.....	3-0 - 11/03/01
Last Win.....	2-1, 10/21/21
Last Loss.....	1-0 - 4/4/21

### HOW TO FOLLOW

TV/Stream .....	ESPN+
Play-by-Play .....	TBD
Live Stats.....	bluehensstats.livestats.us
X/Instagram .....	@Delaware_WSOC
Tickets .....	bluehens.com/wsoc

### WHO ARE WE

Only refer to our institution as the University of Delaware or UD. Do not use "U of D," "UofD," "the U of D" or "UDel." Do not use periods in "UD."

We are the Fightin' Blue Hens on first reference and Blue Hens, Hens, or Blue & Gold after that.

### MEDIA RELATIONS

For interview requests for women's soccer players or coaches, please contact Nick Vuylsteke, Associate Director of Communications & Creative Services

Email.....nickv@udel.edu  
Number.....586-262-7414

## DELAWARE (4-0)



**Head Coach:** Kelly Lawrence  
**Record at UD:** 15-12-14 (3 years)  
**Career Record:** same  
**Last:** Win 1-0 at Navy

GM  
5

## TOWSON (1-1)



**Head Coach:** Katherine Vettori  
**Record at Towson:** 52-47-25 (9 years)  
**Career Record:** 108-96-43 (14 years)  
**Last:** Lost, 4-2 at Florida

thursday, august 28, 2025 | 6 pm | towson, md. | | flosports

### OPENING KICK

The University of Delaware women's soccer program hits the road and faces an old Coastal Athletic Association foe, Towson, on Thursday, August 28.

The Fightin' Blue Hens are off to a historic start to the season. The last time they started out the season 4-0 was back in 2006. They are looking to start the season 5-0 for the first time since 1994.

Last time out, the Blue Hens defeated Navy by a score of 1-0. It is the first time in program history the Blue Hens defeated Navy.

**Adiat Olaogun-Dickson** scored the game-winning goal against Navy in the 52nd minute of the second half. It was the first goal Navy allowed this season

**Maggie Groh** leads the Blue Hens in goals (3), assists (3) and points (9). She has registered a point in all three games of the season.

Towson enters the season 1-1 on the season. The Tigers were defeated by Florida last Thursday by a score of 4-2.

### SEASON LEADERS



fwd maggie groh

#### points

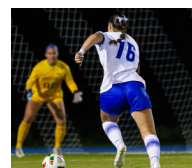
3 goals  
3 assists  
9 points



fwd maggie groh

#### goals

3 goals



fwd maggie groh

#### assists

3 assists



def maura fisher

#### minutes played

360 minutes

### 2025 SCHEDULE

\*all times EST



aug. 14  
W, 5-2



aug. 17  
W, 2-1



aug. 21  
W, 2-0



aug. 24  
W, 1-0



aug. 28  
Towson, Md.  
FloSports | 6 PM



aug. 31  
Baltimore, Md.  
ESPN+ | 1 PM



sept. 4  
Newark, Del.  
ESPN+ | 6 PM



sept. 7  
Newark, Del.  
ESPN+ | Noon



sept. 12  
Newark, Del.  
ESPN+ | 6 PM



sept. 21  
Newark, Del.  
ESPN+ | Noon



sept. 25  
Las Cruces, N.M.  
ESPN+ | 8 PM



sept. 28  
El Paso, Texas  
ESPN+ | 2 PM



oct. 5  
Springfield, Mo.  
ESPN+ | 1 PM



oct. 9  
Newark, Del.  
ESPN+ | 6 PM



oct. 12  
Newark, Del.  
ESPN+ | Noon



oct. 19  
Newark, Del.  
ESPN+ | Noon



oct. 26  
Ruston, La.  
ESPN+ | 1 PM

# A NEW ERA

After a nearly 18-month wait, the new era is finally here and the University of Delaware Fightin' Blue Hens are officially full members of Conference USA as of July 1, 2025. Fourteen of UD's 22 varsity programs will be housed in CUSA, with seven others joining as affiliate members in the Atlantic Sun (women's lacrosse, men's and women's swimming & diving), Atlantic 10 (men's lacrosse), Mid-American Conference (rowing), The Summit League (men's soccer), and Atlantic Hockey America (ice hockey). Field hockey will play an independent schedule this fall as the department continues to work diligently to finalize a new conference for the reigning CAA champions.

An athletic department built on history and tradition, Delaware brings an abundance of success to CUSA having won 10 national championships, 172 team conference titles, 282 individual conference crowns, 342 major conference awards, 2,655 all-league selections, and 543 all-americans.

UD student-athletes complement their athletic success with strong academic performances. During the 2024-25 academic year, the Blue Hens compiled a

cumulative 3.41 grade-point average—the highest in department history, excluding academic terms impacted by COVID-19. This marked the 11th-consecutive year and the 23rd-straight semester in which UD student-athletes have posted a 3.00 GPA or better.

The move will push the Delaware brand across the nation, spanning from the northeast down into Florida, and west as far as New Mexico. However, the reach won't stop there. At least five football games will hit the national scene on CBS Sports Network/ESPN family of networks, including a non-conference tilt on FOX against Colorado. Men's and women's basketball will also have the chance to play nationally televised games as part of CUSA's media rights agreement with CBS Sports Network and ESPN.

Speaking of reach, Delaware's initial announcements about joining Conference USA reached over two billion people according to social media analytics. Put that into perspective – just over one million people live in the state of Delaware. That means these announcements reached over 2,000 Delawares.

Conference USA is an NCAA Division I conference championing success in college athletics through dedicated leadership, dynamic partnership, and diverse membership. Founded in 1995 and based in Dallas, CUSA is home to nine schools: FIU, Jacksonville State, Liberty, Louisiana Tech, Middle Tennessee, New Mexico State, Sam Houston, UTEP, and WKU. Kennesaw State joins the league in 2024 and Delaware begins competition in 2025.

"Adding the University of Delaware is a tremendous opportunity for Conference USA as we strategically position ourselves for continued success," Conference USA Commissioner Judy MacLeod said. "We are excited to add the state's flagship university with its rich history in athletics and academics and look forward to our partnership with President Dennis Assanis, Director of Athletics Chrissi Rawak, and their leadership group."



## CUSA SPONSORED DELAWARE SPORTS

- Baseball
- M/W Basketball
- W Cross Country/Track & Field
- Football
- M/W Golf
- W Soccer
- Softball
- M/W Tennis
- Volleyball

## OTHER DELAWARE SPORTS AFFILIATIONS

- |                |                 |                 |                   |
|----------------|-----------------|-----------------|-------------------|
| - Field Hockey | Independent     | - W Lacrosse    | Atlantic Sun      |
| - W Ice Hockey | Atlantic Hockey | - W Rowing      | Mid-American      |
|                | America         | - M Soccer      | The Summit League |
| - M Lacrosse   | Atlantic 10     | - M/W Swim/Dive | Atlantic Sun      |

## QUICK FACTS

School.....	University of Delaware
Location .....	Newark, Del.
Founded .....	1743
Enrollment .....	24,039
Interim President.....	Laura Carlson
School Website .....	www.udel.edu
Nickname.....	Fightin' Blue Hens
School Colors.....	Blue & Gold
Athletics Website .....	www.bluehens.com
Interim Director of Athletics.....	Jordan Skolnick
Conference .....	Conference USA
Website.....	www.conferenceusa.com

## SOCCKER PROGRAM

Stadium .....	Stuart & Suzanne Grant Stadium
Surface .....	natural grass
Capacity .....	1,800
First Season.....	1990
All-Time Record .....	285-282-70
All-Time Grant Stadium Record .....	167-104-38
National Championships .....	0
Conference Championships.....	0
Head Coach.....	Kelly Lawrence (Indiana '10)
Career Record.....	13-12-14 / 3 seasons
Record at UD .....	same
Letterwinners Returning/Lost .....	18/11
Starters Returning/Lost .....	18/11
Forwards .....	8/2
Midfield .....	5/4
Defenders .....	4/2
Goalkeeper.....	1/3
Newcomers.....	8
2024 Overall Record.....	6-7-6
2024 CAA Record .....	4-2-4
2024 CAA Finish.....	T-5th
2024 Postseason.....	CAA Quarterfinals

## TABLE OF CONTENTS

A new era.....	2
statistical comparisons .....	3
quick facts, program history .....	3
storylines .....	3-5
current streaks.....	4
delaware record when.....	5
Lawrence all-time vs opponents.....	5
awards page.....	6
roster + pronunciations.....	7
roster by class & geography .....	8
Kelly Lawrence bio.....	9
assistant Coaches & Support Staff.....	10
Conference USA Information.....	11
starters by game .....	12
miscellaneous information.....	13
game-by-game box scores .....	14
TV Rosters .....	15-16

## WHAT TO LOOK FOR...

- Delaware is to continue its hot start to the season and start 5-0 for the first time since 1994
- The Blue Hens are looking for their first win against Towson on the road since 2019
- The last two times the Tigers and Blue Hens met, it ended in a 0-0 tie
- Towson has not allowed a goal at home in the 2025 season

## groh-ing talent

**Maggie Groh** kicked off the 2025 season in a big way against Mount St. Mary's and Bucknell. She scored two goals and added one assist in the 5-2 win over the Mountaineers. Against the Bison, she scored one goal, and had the assist on **Tasiya Reid's** game-winning goal in the 86th minute.

## conference player of the week

Through the first two weeks of the season, the Blue Hens have earned two Conference USA Player's of the Week.

**Maggie Groh** was the Offensive Player of the Week back on August 19 after scoring three goals and two assists in wins over Mount St. Mary's and Bucknell.

The following week, **Sophia Hall** was named the conference's goalkeeper of the week. She recorded back-to-back shutouts in wins over George Mason and Navy. Hall is one of two freshman to record back-to-back shutouts that weekend and is one of six freshman in the country to record multiple shutouts

## good starts

Despite it being early in the season, multiple Blue Hens have statistically had their best seasons of their career.

Heading into the 2025 season, **Maggie Groh** had four career goals and one career assist. She scored one goal her freshman season, and scored three goals and had one assist in her sophomore season. In 2025, she already has three goals, and three assists.

**Tasiya Reid** entered the 2025 season with one career goal. She doubled her career goal total with two on the season.

Freshman **Sophia Hall** started in net and played all 360 minutes through the first four games of the season. She boast a 4-0 record and recorded 18 saves. She became the first freshman goalkeeper since 2022 to record a solo shutout win against George Mason on August 21.

## historic start

The Blue Hens 4-0 record to open the season is the programs best start under third year Head Coach **Kelly Lawrence**, and is the best since the spring of 2006. The last time the Blue Hens started 5-0 was back in 1994.

## fast starts

The Blue Hens under **Kelly Lawrence** have benefitted from fast starts and strong first half

## STATISTICAL COMPARISON

Category	DEL	NCAA	CUSA	TOW	NCAA	CAA
Goals	10	28th	2nd	7	73rd	1st
Goals per game	2.50	53rd	2nd	3.50	22nd	1st
Assists	10	22nd	1st	11	15th	1st
Total Points	30	28th	1st	25	48th	1st
Shots Per Game	12.50	156th	5th	18.50	37th	1st
Shots Accuracy	0.480	53rd	2nd	0.541	56th	1st
Corner Kicks per game	5.00	132nd	3rd	4.50	172nd	9th
Goal Differential	7	29th	2nd	3	96th	2nd
Saves Per Game	3.25	208th	6th	3.50	175th	6th
Save Percentage	.813	96th	1st	0.636	286th	10th
Shutout Percentage	0.500	62nd	2nd	.500	6nd	3rd
Goals Against Average	0.75	90th	2nd	2.00	247th	10th
Yellow Cards	1	234th	8th	4	57th	4th

performances. The Blue Hens are 15-0-2 when scoring first, as well as 9-0-0 when leading at the half. In the 2025 season, the Blue Hens are 4-0 when scoring first and are 3-0 when leading at halftime. The Blue Hens are also 8-2-1 when scoring two or more goals under **Kelly Lawrence**.

### team improvements - 2023

The Blue Hens saw major improvements. In Lawrence's first season in 2023, the program nearly tripled its win total. The Blue Hens shut out opponents six times in 2023, including a shutout over the CAA Regular Season and Tournament Champions Towson. Its defense allowed the least amount of goals in the conference (13), leading to the second-best goals against average in the conference of 0.72. Both those marks rank third all time in program history, and is the defensive season for the Blue Hens since 2009.

In 2023, the Blue Hens goalkeepers put up one of the best seasons in program history. Their save percentage of .851 ranks third in program history and is the best mark since 2009. Individually, goalkeeper **Kyla Burns** also had one of the best seasons in net in program history. She ranks second all time in save percentage in a season at .911. Burns also led the country in save percentage as well. She became the first Blue Hen ever to lead the NCAA in any statistical category.

### team improvements - 2024

The Delaware women's soccer program in 2024 earned their first trip to the CAA Tournament since the 2019 season. During the

2024 campaign, the Blue Hens started off conference play 4-0, while also winning five games in a row. It was the best stretch for the program since 2011. During the stretch, the Blue Hens had late game heroics from **Maggie Groh** and **Brooke Vogel**, as the two scored game winning goals to defeat Hofstra and Campbell. In 2024, **Kyla Burns** became the first Blue Hen in program history to earn the conference goalkeeper of the year. Burns also earned first team all-conference honors, along with **Conny Viehmann**, **Carly Binn**, **Caitin St. Leger**, **Brooke Vogel** and **Olivia Bley** all earned all-conference honors.

The Delaware defense allowed six goals in 10 CAA contests. UD had seven shutouts in CAA play and eight throughout the season.

### diverse group

The 2025 Blue Hens roster brings a wealth of diversity. The roster consists of six different states (Delaware, Maryland, New Jersey, New York, Pennsylvania, Virginia) and three different countries (Canada, Germany, United States).

### out of country members

Defenders **Ava Ticconi** and **Conny Viehmann** are two athletes who come from different countries. Ticconi is from Ontario Canada, and Viehmann is from Landenburg, Germany.

### freshman impact

The Blue Hens have received immediate impact from their freshman in the 2025 roster.

**Sophia Hall** and **Maura Fisher** have had a big impact on the defensive side of the ball. Both Hall

## CURRENT STREAKS

	Consecutive GP/GS	Pos
Constanze Viehmann	51/48	D
Leilah Sallee	51/6	F
Willa Pratt	37/10	M
Maggie Groh	30/14	F
Cassandra Saldarini	26/6	D
Gabby Riley	23/23	M
Olivia Bley	23/15	F
Brooke Vogel	23/14	M
Taisiya Reid	20/0	
Ava Sallee	19/7	D
Maggie Holloway	18/10	M/F
Ava Agresti	15/4	F
Olivia Hoover	12/0	
Ryan Mundy	7/3	D
Calista Collins	4/4	D
Sophia Hall	4/4	GK
Maura Fisher	4/4	D
Sophia Zeppos	4/3	M
Lilli Lubic	4/2	M
Adiat Olagun-Dickson	4/2	F
Alayna Eyman	1/0	
Sarah Fritz	1/0	

## ON THIS DATE IN DELAWARE WOMEN'S SOCCER HISTORY...

AUG

28

The Blue Hens opened the 2009 season with a 3-0 win against Binghamton at Grant Stadium



and Fisher have started in all four games this season, and played in all 360 minutes. This past weekend, Hall and Fisher played a big role in allowing zero goals. Hall collected eight saves between the two games, and Fisher played a role in allowing an 0.081 shot percentage.

Offensively, **Adiat Olaogun-Dickson** leads all freshman in goals with two. She scored the game-winning goal against Navy on August 24, which was the first goal Navy allowed through four games.

Other freshman who have made an impact on the season are **Lilli Lubic**, who's played in 257 minutes, scored one goal, and credited with one assist, and **Sophia Zeppos**, who started in three games and played in 257 minutes as well.

### team captains

**Gabby Riley**, **Willa Pratt**, and **Conny Viehmann** were named team captains for the 2025 season.

### hens in the pros

Three women's soccer alumnae currently compete for clubs in the professional ranks. **Kyla Burns** plays for Breidablik which plays in the top division in Iceland. **Paige Kenton** plays for Sporting JAX FC, which is located in Jacksonville and competes in the Gainbridge Super League. **Sara D'Appolonia** signed with Peninsula Power FC, and currently plays for Melbourne Victory FC in Australia.

### siblings on the team

The Blue Hens roster includes sisters Ava and Leilah Sallee. Leilah is currently a senior, while Ava is a sophomore.

### club connections

The Blue Hens roster consists of multiple athletes who competed for the same club soccer team.

Goalkeeper **Sophia Hall**, defender **Maura Fisher**, forward **Olivia Bley**, defender **Alayna Eyman**, and midfielder **Brooke Vogel** all played for Penn Fusion, located in West Chester, Pennsylvania. With Penn Fusion, Vogel earned first team All-ECNL honors in 2022 and 2023.

Additionally, defender **Maggie Holloway** and midfielder **Sophia Zeppos** competed for FC Revolutions, located in Reading, Pennsylvania. Both Holloway and Zeppos were starters while Zeppos served as a team captain. FC Revolution won three state up championships and were regional champions in 2022.

### multi-sport athlete

Several athletes competed in multiple sports during their time in high school. Freshman goalkeeper **Sophia Hall** was a four sport athlete, who competed in track & field, basketball, lacrosse, and soccer

In addition, seven athletes competed in track & field: **Maura Fisher**, **Ava Sallee**, **Adiat Olagun-Dickson**, **Gabby Riley**, **Taisiya Reid**, and **Brooke Vogel**. Sallee helped break the school record for the Fleetwood Area High School track & field team in the 4 by 100-meters.

Three athletes competed in basketball: **Maggie Groh**, **Ryan Mundy**, and **Sophia Zeppos**. In 2023, Groh hit a 3-pointer at the buzzer to win the league title for the Dallastown girls' basketball team over York-Adams. Hall was a four-year starter and team captain her senior season.

Two athletes competed in lacrosse: **Maura Fisher** and **Sophia Zeppos**. Zeppos was a starter her senior year.

### cross-sports connections

Midfielder **Gabby Riley** and incoming freshman **Taylor Stone** for the Delaware track & field team both competed for the Middletown High School track & field and soccer teams. Stone also competed for Sporting Delaware soccer club, the same club as defender Ryan Mundy.

### best buddies

In high school freshman midfielder **Sophia Zeppos** was the vice president of the Best Buddies club and was a part of the club unified bocce team her junior and senior seasons.

Unified bocce is a Special Olympics program that pairs students with and without intellectual disabilities on the same sports team. This inclusive sport promotes teamwork, friendship, and a sense of belonging for all participants. It's part of the larger Unified Champion Schools program, which also includes youth leadership and whole school engagement components.

Zeppos was partnered with an special education athlete and was paired with them for the entire season. They would practice after school in the winter and played other schools in the area once a week. Unified bocce was treated as a varsity sport.

"For me personally, it was really heart warming seeing how much the season meant to our partners and seeing them make the environment what they wanted," Zeppos said. "Sometimes we take for granted how easy it is to make friends on our own sports teams. So, seeing how much it meant to them being on a team was the most important thing to me."

## DELAWARE RECORD WHEN

	2025	UNDER LAWRENCE
Overall	4-0	15-12-14
Conference	0-0	6-5-11
Non-conference	4-0	9-7-3
Home	2-0	9-5-7
Away	1-0	6-6-7
Neutral	0-0	0-1
Current streak	W4	W4
Current home streak	2-0	W2
Current road streak	2-0	W2
Current neutral streak	0-0	L1
Day game	2-0	8-4-9
Night game	2-0	7-8-5
August	4-0	7-6-1
September	0-0	5-2-6
October	0-0	3-4-7
Scoring first	4-0	15-0-2
Opponent scores first	0-0	0-12-4
Leading at halftime	3-0	9-0-0
Trailing at halftime	0-0	0-8-2
Tied at halftime	1-0	6-4-12
Overtime	0-0	0-1-0
Scoring 0 goals	0-0	0-9-7
Scoring 1 goals	2-0	7-3-6
Scoring 2-3 goals	2-0	4-2-1
Scoring 4-6 goals	1-0	3-0
Scoring 7+ goals	0-0	1-0
Allowing 0 goals	2-0	10-0-8
Allowing 1 goals	1-0	4-8-4
Allowing 2-3 goals	1-0	1-3-1
Allowing 4-6 goals	0-0	0-1-0
Allowing 7+ goals	0-0	0-0-0
With 1-5 shots	0-0	2-4-2
With 6-10 shots	2-0	6-7-7
With 11-15 shots	1-0	3-1-4
With 16-20 shots	0-0	1-0-1
With 21+ shots	1-0	3-0
Allowing 1-5 shots	1-0	6-0-1
Allowing 6-10 shots	1-0	4-1-5
Allowing 11-15 shots	2-0	3-10-7
Allowing 16-20 shots	0-0	2-1-1
Allowing 21+ shots	0-0	0-1-0
Leading in shots	2-0	9-0-4
Trailing in shots	2-0	6-11-10
Tied in shots	0-0	0-1
Leading in corner	2-0	11-1-8
Trailing in corners	1-0	3-10-6
Tied in corners	1-0	1-1
Leading in saves	3-0	8-9-10
Trailing in saves	1-0	7-1-3
Tied in saves	0-0	0-2-1
Received yellow card	1-0	6-6-1
Opp. received yellow card	2-0	6-8-5
Received red card	0-0	0-0-0
Opp. received red card	0-0	0-1-0

## seniors

The Blue Hens roster has four seniors on the roster: **Olivia Hoover, Ryan Mundy, Leilah Sallee, and Conny Viehmann.** The four will be honored on Sept. 7.

## coaches experience in the pros

Head coach **Kelly Lawrence** and associate head coach **Becky Edwards** both have experience playing professionally. Edwards was selected 12th overall in the 2010 Women's Professional Soccer draft, leading FC Gold Pride to a WPS Championship in her rookie season. That was the start of a nine-year pro career which also included titles with Western NY Flash and Portland Thorns, as well as two stints in Sweden.

At the international level, Edwards captained the United States to the 2008 FIFA U-20 Women's World Cup title, and in 2011 she helped the U.S. U-23 National Team win a championship at the Four Nations Tournament in La Manga, Spain.

Lawrence played competitively for the Boston Breakers Reserves (2010) and the Orange County Waves Professional (2011) of the WPSL. Lawrence also played on the England National Team (U15-U23) and Team Great Britain.

## LAST TIME A BLUE HEN...

## Multiple goals in a game

Maggie Groh (2) 8/14/25 vs Mount St. Mary's

## Hat trick in a game

Allison Kendrio 9/19/04 vs Temple

## 4 goals in a game

Beth Hatt 10/18/93 vs Lehigh

## Scored a PK goal

Caitlin St. Leger 8/25/24 vs La Salle

## Had multiple assists in a game

Riley Dixon 8/23/19 vs Lehigh

## Had three assists in a game

Izzy Lane 8/18/22 vs Delaware State

## Had four assists in a game

Kristy Hendrickson 10/18/93 vs Lehigh

## 5 points in a game

Maggie Groh 8/14/25 vs Mount St. Mary's

## 6 points in a game

Allison Kendrio 9/19/04 vs Temple

## 8 points in a game

Beth Hatt 10/18/93

## multiple goals and multiple assists

Deb Flowers 9/20/93 vs Mt. St. Mary's

## 5 consecutive games with a point

Kristy Hendrickson 1994

## 6 consecutive games with a point

Sara D'Appolonia 2019

## 8 consecutive games with a point

Ginette Buffone 2001

## 8 shots in a game

Ali Miller 10/7/11 vs Old Dominion

## 9 shots in a game

Ali Miller 9/2/11 vs St. Joe's

## Solo GK shutout

Sophia Hall 8/24/25 at Navy

## Combined GK shutout

Mia Reed + Kyla Burns 9/15/24 vs George Mason

## LAWRENCE ALL TIME VS OPPONENTS

Bucknell	1-0-1	Hofstra	1-2	Saint Francis	1-0
Campbell	1-0-1	Liberty	0-2	Stony Brook	0-1-1
Charleston	0-0-2	Mount St. Mary's	1-0	Syracuse	1-0
Drexel	0-0-2	Monmouth	0-2	Towson	0-0-2
Elon	1-0	Navy	1-0	Virginia Tech	0-1
La Salle	1-1	Northeastern	0-0-2	UNCW	0-0-1
George Mason	2-0	Penn	0-1-1	West Virginia	0-1
Hampton	2-0	Richmond	1-0-1	William & Mary	1-1

## 2025 DELAWARE NUMERICAL ROSTER

#	NAME	POS.	HT.	YR.	HOMETOWN/HIGH SCHOOL (PREV. SCHOOL)
0	Charlotte Kulikosky	GK	5-9	Fr.	Arlington, Va. / Washington-Liberty
1	Sophia Hall	GK	5-8	Fr.	Malvern, Penn / Academy of Notre Dame
2	Maura Fisher	D/M	5-7	Fr.	West Chester, Pa. / Reed Henderson
4	Ava Ticconi	D/M	5-4	Fr.	Ontario, Canada / Assumption Catholic Secondary
6	Leilah Sallee	F	5-0	Sr.	Fleetwood, Pa. / Fleetwood Area HS
7	Ava Sallee	D	5-3	So.	Fleetwood, Pa. / Fleetwood Area High School
8	Cassandra Saldarini	F	5-2	Jr.	Morris Plains, N.J. / Parsippany Hills
9	Sarah Fritz	M/F	5-6	So.	Mifflinburg, Pa. / Mifflinburg Area High School
10	Adiat Olaogun-Dickson	M/F	5-6	Fr.	Sicklerville, N.J. / Timber Creek Regional
11	Ava Agresti	F	5-7	So.	Monmouth Beach, N.J. / Shore Regional
12	Maggie Holloway	M/F	5-5	So.	Douglassville, Pa. / Daniel Boone Area High School
13	Willa Pratt	M	5-4	Jr.	Sauquoit, N.Y. / New Hartford
14	Olivia Bley	F	5-6	So.	West Chester, Pa. / Westtown School
15	Lilli Lubic	M	5-6	Fr.	Ashburn, Va. / Independence
16	Maggie Groh	F	5-8	Jr.	York, Penn. / Dallastown
17	Alayna Eyman	D	5-6	Jr.	North East, Md. / Rising Sun
20	Gabby Riley	M	5-5	So.	Middletown, Del. / Middletown High School
21	Ryan Mundy	F	5-2	Sr.	Wilmington, Del. / The Charter School of Wilmington
22	Calista Collins	D	5-7	Jr.	River Edge, N.J. / Saddler River Day School
24	Gianna Berkley	GK	5-8	Fr.	Jackson, N.J. / Jackson Memorial
25	Taisiya Reid	F	5-3	Jr.	Solomons, Md. / Patuxent
26	Brooke Vogel	M	5-7	So.	Mickleton, N.J. / Gloucester County Institute of Technology
27	Olivia Hoover	F	5-7	Sr.	Glen Ridge, NJ / Glen Ridge HS
32	Sophia Zeppos	M/F	5-8	Fr.	Reading, Pa. / Wyomissing Area
33	Constanze Viehmann	D	5-7	Sr.	Ladenburg, Germany / TSG 1899 Hoffenheim
99	Leah Rhinehart	GK	5-9	So.	Fallston, Md. / Fallston High School

## PRO-NUN-SEE-AY-SHUNS

#0 Charlotte Kulikosky	kull-uh-cah-ski	14 Olivia Bley	blaye
#4 Ava Ticconi	tuh-cone-ee	15 Lilli Lubic	loo-bick
#6 Leilah Sallee	lay-luh suh-lee	16 Maggie Groh	Grow
#7 Ava Sallee	suh-lee	26 Brooke Vogel	voh-gul
#8 Cassi Saldarini	sal-dree-knee	25 Taisiya Reid	Tuh-sigh-uh reed
#10 Adiat Olaogun-Dickson	(ah-dee-aht)	33 Conny Viehmann	cuh-stan-zuh vee-min
	(uhh-lah-goon)	99 Leah Rhinehart	lee-uh
#11 Ava Agresti	uh-gress-tee		

## ROSTER BY CLASS

## SENIORS (4)

Constanze  
Viehmann  
Olivia Hoover  
Ryan Mundy  
Leilah Sallee

## JUNIORS (6)

Taisiya Reid  
Calista Collins  
Alayna Eyman  
Maggie Groh  
Willa Pratt  
Cassandra  
Saldarini

## SOPHOMORES (8)

Leah Rhinehart  
Brooke Vogel  
Gabby Riley  
Olivia Bley  
Maggie Holloway  
Ava Agresti  
Sarah Fritz  
Ava Sallee

## FRESHMEN (8)

Sophia Zeppos  
Gianna Berkley  
Lilli Lubic  
Adiat Olaogun-Dickson  
Ava Ticconi  
Maura Fisher  
Sophia Hall  
Charlotte Kulikosky

## ALPHABETICAL

#	NAME	POS.
11	Ava Agresti	F
24	Gianna Berkley	GK
14	Olivia Bley	F
22	Calista Collins	D
17	Alayna Eyman	D
2	Maura Fisher	D/M
9	Sarah Fritz	M/F
16	Maggie Groh	F
1	Sophia Hall	GK
12	Maggie Holloway	M/F
27	Olivia Hoover	F
0	Charlotte Kulikosky	GK
15	Lilli Lubic	M
21	Ryan Mundy	F
10	Adiat Olaogun-Dickson	M/F
13	Willa Pratt	M
25	Taisiya Reid	F
99	Leah Rhinehart	GK
20	Gabby Riley	M
8	Cassandra Saldarini	F
7	Ava Sallee	D
6	Leilah Sallee	F
4	Ava Ticconi	D/M
33	Constanze Viehmann	D
26	Brooke Vogel	M
32	Sophia Zeppos	M/F

## GEOGRAPHICAL

## Canada (1)

4 Ava Ticconi D/M

## Delaware (2)

20 Gabby Riley M  
21 Ryan Mundy F

## Germany (1)

33 Constanze Viehmann D

## Maryland (3)

17 Alayna Eyman D  
25 Taisiya Reid F  
99 Leah Rhinehart GK

## New Jersey (7)

8 Cassandra Saldarini F  
10 Adiat Olaogun-Dickson M/F  
11 Ava Agresti F  
22 Calista Collins D  
24 Gianna Berkley GK  
26 Brooke Vogel M  
27 Olivia Hoover F

## New York (1)

13 Willa Pratt M

## Pennsylvania (9)

1 Sophia Hall GK  
2 Maura Fisher D/M  
6 Leilah Sallee F  
7 Ava Sallee D  
9 Sarah Fritz F  
12 Maggie Holloway M/F  
14 Olivia Bley F  
16 Maggie Groh F  
32 Sophia Zeppos M/F

## Virginia (2)

0 Charlotte Kulikosky GK  
15 Lilli Lubic M



### HEAD COACH KELLY LAWRENCE

**Hometown:** Chigwell, Essex (England)

**Alma Mater:** Indiana '10

**Year in Coaching:** 12th

**Years as Head Coach:** 3rd

### NOTABLE HIGHLIGHTS

2022 Big Ten Tournament Champs

2022 NCAA Sweet 16 Appearance

2021 Patriot League Regular Season Champions

2014 MAAC Regular Season Champions

2013 MAAC Regular Season Champions

2013 MAAC Tournament Champions

### AS DELAWARE HEAD COACH

<b>Year</b>	3rd in 2025
<b>Overall Record</b>	13-12-14
<b>Home</b>	8-5-7
<b>Away</b>	5-6-7
<b>Neutral</b>	0-1-0
<b>Conference</b>	6-5-11
<b>Non-Conference</b>	7-7-3

### LAWRENCE YEAR-BY-YEAR

YEAR	W-L	PCT.	CONF
2023	5-5-8	.500	2-3-7
2024	6-7-6	.474	4-2-4
2025	4-0-0	1.000	
<b>TOTAL</b>	<b>15-12-14</b>	<b>.537</b>	<b>6-5-11</b>

**First career win:** 1-0 vs Syracuse  
8/17/23

**Postseason:** 0-1 in Conference  
Tournament

## HEAD COACH KELLY LAWRENCE

Kelly Lawrence was named the women's soccer head coach on November 14, 2022. Lawrence begins her third season as the programs head coach.

The Delaware women's soccer program earned its first trip to the CAA Tournament since the 2019 season. During the 2024 campaign, the Blue Hens started off conference play 4-0, while also winning five games in a row. It was the best stretch for the program since 2011.

In 2024, Kyla Burns became the first Blue Hen in program history to earn the conference goalkeeper of the year. Burns also earned first team All-Conference honors, along with Conny Viehmann, Carly Binn, Caitin St. Leger, Brooke Vogel and Olivia Bley all earned all-conference honors.

The Blue Hens women's soccer program made big strides in their first year under Lawrence in 2023. They started off her coaching career in a big way, defeating Syracuse 1-0. It was the program's first ever win over a power-five school. The Blue Hens picked up a victory over La Salle on the road for the first time since 1994, and tied the program record for goals in a game in its 9-1 win over Hampton.

Prior to UD, Lawrence was the associate head coach at Penn State for one season in 2022. The Nittany Lions made a sweet 16 appearance

Prior to Penn State, Lawrence served as the associate head coach at Boston University from 2019-22. While at Boston

U, she helped coach the team to the 2021 Patriot League Spring North Division Champions and the 2021 Patriot League Regular Season Champions.

Previous stops for Lawrence include serving as the interim head coach/assistant coach at Syracuse University from 2015-19.

As an assistant coach at Monmouth from 2013-14, she helped the team win the 2013 MAAC Tournament Championship and earn back-to-back MAAC Regular Season Championships in 2013 and 2014.

Lawrence competed for Indiana University from 2006-10. While in college she was named to the Mac Hermann Watch List (2008), NCAA Sweet Sixteen Finalist (2007), First Team All- BIG TEN (2007), BIG Ten All-Freshman Team (2006), All BIG Ten Freshmen Team, and three-time NSCAA All-Region. She was the only player in Indiana History to win All-BIG Ten honors in all four years.

She played competitively for the Boston Breakers Reserves (2010) and the Orange County Waves Professional (2011) of the WPSL. Lawrence also played on the England National Team (U15-U23) and Team Great Britain.

Lawrence is married to Delaware Ice Hockey Head Coach Allison Coomey.

### LAWRENCE'S COACHING ASSIGNMENTS

YEAR	SCHOOL	POSITION
2023-Pres.	Delaware	Head Coach
2022	Penn State	Associate Head Coach
2019-22	Boston	Associate Head Coach
2015-19	Syracuse	Intern Head Coach/Assistant Coach
2013-14	Monmouth	Assistant Coach

### SUPERLATIVES UNDER KELLY LAWRENCE

Most goals	9 vs Hampton, 10/19/23
Goals allowed	4 vs La Salle, 8/25/24
Shots	29 vs Hampton, 10/19/23
Shots on Goal	17 vs Hampton, 10/19/23
Shots Allowed	25 vs Stony Brook, 10/13/24
Saves	8 vs Charleston, 10/1/23



## ASSISTANT COACHES



### BECKY EDWARDS ASSOCIATE HEAD COACH

Becky Edwards enters her first season with the Delaware women's soccer program in 2025.

Prior to joining the Blue Hens staff, Edwards spent three seasons with Tennessee. The Volunteers boasted a 29-20-10 record in the three seasons Edwards was there, including three straight trips to the NCAA Tournament. In 2022, the Volunteers offense ranked second in the Southeastern Conference (SEC) in goals per game at 2.26, and third in total goals with 43 en route to a SEC East Division Co-Championship.

Before her time in Rocky Top, Edwards was an assistant coach at Penn for one season. She helped lead the Quakers to a 9-5-2 record in 2021 and working directly with the offense, which turned in 29 goals over 16 games.

Outside of collegiate coaching, Edwards is a current Assistant Coach for the US U-20 Women's National Team. With US women's soccer, the team won a bronze medal in the FIFA U-20 Women's World Cup, and a silver medal in the CONCACAF U20 Championships.

During her playing career, Edwards was an accomplished athlete at both the collegiate and professional levels. A two-time First Team All-America selection, she led Florida State to a 72-18-11 record during her four years, making NCAA Tournament appearances every season and twice advancing to the College Cup. She was named to the Florida State Athletics Hall of Fame in 2021.

She graduated magna cum laude from FSU in 2010 before being drafted as the 12th overall pick in the 2010 Women's Professional Soccer draft.

At the international level, Edwards captained the United States to the 2008 FIFA U-20 Women's World Cup title, and in 2011 she helped the U.S. U-23 National Team win a championship at the Four Nations Tournament in La Manga, Spain. Following that performance, she earned a call-up to the senior USWNT camp.



### SHANNON COLEY ASSISTANT COACH/GOALKEEPERS

Coley is in her third year with the women's soccer program in 2025.

The Delaware women's soccer program in 2024 earned its first trip to the CAA Tournament since 2019. During the 2024 campaign, the Blue Hens started off conference play 4-0, while also winning five games in a row. It was the best stretch for the program since 2011.

With the help of Coley, Kyla Burns became the first Blue Hen in program history to earn the conference goalkeeper of the year. Burns also earned first team all-conference honors, while Conny Viehmann, Carly Binn, Caitin St. Leger, Brooke Vogel and Olivia Bley all earned all-conference honors.

The Delaware defense allowed six goals in 10 CAA contests. They had seven shutouts in CAA play and eight throughout the season.

The Blue Hens shutout opponents six times in 2023, including a shutout over the CAA Regular Season and Tournament Champions Towson. Their defense allowed the least amount of goals in the conference (13), leading to the second best goals against average in the conference of 0.72. Both those marks rank third all time in program history, and is the defensive season for the Blue Hens since 2009.

In 2023, under the help of Coley, the Blue Hens goalkeepers put up one of the best seasons in program history. Their save percentage of .851 ranks third in program history and is the best mark since 2009. Individually, goalkeeper Kyla Burns also had one of the best seasons in net in program history. She ranks second all time in save percentage in a season at .911. Burns also led the country in save percentage as well. She became the first Blue Hen ever to lead the NCAA in any statistical category.

Coley previously coached at Rhode Island, Western Michigan and Lawrence Tech.

She graduated from Oakland as the single-season record for shutouts with eight in 2012 and was a Summit League All-Tournament Team selection in 2012.

## SUPPORT STAFF

<b>Sarah Jefferson</b>	Athletic Trainer
<b>Mesiah Polycarpe</b>	Strength & Conditioning Coach
<b>Nick Vuylsteke</b>	Athletic Communications
<b>Devon Cummings</b>	Academic Advisor
<b>Austin Mark</b>	Team Nutritionist
<b>Claire Devine</b>	Sport Psychologist

delaware

# STARTERS BY GAME

	GK	DEF	DEF	DEF	MID	MID	MID	FWD	FWD	FWD	MID/FWD
Mount St. Mary's	Hall	Fisher	A. Sallee	Collins	Lubic	Vogel	Riley	Groh	Agresti	Bley	Mundy
Bucknell	Hall	Fisher	A. Sallee	Collins	Zeppos	Vogel	Riley	Groh	Agresti	Bley	Saldarini
George Mason	Hall	Fisher	A. Sallee	Collins	Lubic	Zeppos	Riley	Groh	Agresti	Olagun-Dickson	Mundy
at Navy	Hall	Fisher	A. Sallee	Collins	Zeppos	Vogel	Riley	Groh	Agresti	Olagun-Dickson	Mundy
at Towson											
at UMBC											
Cornell											
Drexel											
William & Mary											
FIU											
at New Mexico State											
at UTEP											
at Missouri State											
Jacksonville State											
Kennesaw State											
Liberty											
at LA Tech											



delaware

# MISCELLANEOUS GAME INFO

OPP	FIRST POSS.	JERSEY	DAY/NIGHT GAME	RESULT
Mount St. Mary's	Delaware	White	Night	W, 5-2
Bucknell	Delaware	White	Night	W, 2-1
at George Mason	Delaware	White	Day	W, 2-0
at Navy	Delaware	Blue	Day	W, 1-0
at Towson				
at UMBC				
Cornell				
Drexel				
William & Mary				
FIU				
at New Mexico State				
at UTEP				
at Missouri State				
Jacksonville State				
Kennesaw State				
Liberty				
at LA Tech				

delaware

# WEEKLY STATISTICAL LEADERS

OPP	GOALS	SHOTS	SAVES	MINUTES PLAYED
Mount St. Mary's	Groh (2)	Groh (5)	Hall (3)	Hall, Fisher, A. Sallee, Collins (90)
Bucknell	Groh, Reid (1)	Groh (4)	Hall (2)	Hall, Fisher, A. Sallee, Collins Riley (90)
at George Mason	Lubic (1), Vogel (1)	Lubic (3)	Hall (5)	Hall, A. Sallee, Collins Fisher (90)
at Navy	Olaogun-Dickaon (1)	Olaogun-Dickaon, Groh (2)	Hall (3)	Hall, Fisher, A. Sallee, Collins, Riley (90)
at Towson				
at UMBC				
Cornell				
Drexel				
William & Mary				
FIU				
at New Mexico State				
at UTEP				
at Missouri State				
Jacksonville State				
Kennesaw State				
Liberty				
at LA Tech				

delaware

# GAME BY GAME BOX SCORES

Mount St. Mary's (0-1-0, 0-0-0) vs- Delaware (1-0-0, 0-0-0)  
08/14/2023 at Newark, Del. (Stuart & Suzanne Grant Stadium)

Date: 08/14/2023  
Attendance: 258  
Stadium: Stuart & Suzanne Grant Stadium  
Officials: Referee, Zorya Ramirez; Asst. Referee, Marc Guttridge; Asst. Referee, Kenny Freeman; AR, Official, Zachary Smith

Goals By Period	1	2	Total
Mount St. Mary's	1	1	2
Delaware	2	3	5

## Mount St. Mary's 2

Pos	#	Player	Starters	SH	SOG	G	A	MIN
DEF	3	Shra, Jeremiah	0	0	0	0	0	90
DEF	5	Olivia, Gabrielle	0	0	0	0	52	
DEF	6	Hermal, Joelle	1	1	0	0	78	
MID	9	Gallagher, Peyton	0	0	0	0	55	
	10	Carne Ferrara, Ines	0	0	0	0	71	
FWD	14	Barger, Anita	0	0	0	0	56	
DEF	15	Maura, Peyton	0	0	0	0	81	
FWD	17	Wilson, Nicole	0	0	0	0	90	
GO	22	Makela, Abby	0	0	0	0	45	
MID	23	Antone, Erin	0	0	0	1	72	
FWD	30	Simmons, Taylor	2	2	1	1	65	
Substitutes								
GO	1	Joyce, Anne	0	0	0	0	45	
MID	7	Young, Lillian	0	0	0	0	18	
MID	13	Vella, Courtney	0	0	0	0	35	
MID	16	Nichols, Cassidy	2	2	1	0	40	
FWD	21	Stoddard, Joelle	0	0	0	0	25	
DEF	26	Gannon, Molly	0	0	0	0	38	
FWD	27	Devosha, Kai	0	0	0	0	12	
MID	29	MacDonald, Maddie	0	0	0	0	35	
MID	32	Osler, Hannah	0	0	0	0	15	
<b>Totals</b>				5	5	2	2	990

#	Goalkeepers	Minutes	GA	Saves
1	Joyce, Anne	45:00	0	3
22	Makela, Abby	45:00	2	1
<b>Totals</b>			6	4

Shots By Period	1	2	Total
Mount St. Mary's	2	3	5
Delaware	9	17	26

Saves By Period	1	2	Total
Mount St. Mary's	1	3	4
Delaware	2	2	3

## Scoring Summary

Time	Team	Goal Scorer	Assist	Description
07:46	DEL	Maggie Groh	Ryan Mundy	GOAL by DEL Groh, Maggie Assist by Mundy, Ryan.
15:29	MSM	Taylor Simmons	Erin Antone	GOAL by MSM Simmons, Taylor Assist by Antone, Erin.
42:28	DEL	Adiel Oleagun-Dickson	Gabby Riley	GOAL by DEL Oleagun-Dickson, Adiel Assist by Riley, Gabby.
76:26	DEL	Maggie Groh	Brooke Vogel	GOAL by DEL Groh, Maggie Assist by Vogel, Brooke.

Delaware (3-0-0, 0-0-0) vs- Georgia Mason (0-1-1, 0-0-0)  
08/21/2023 (Georgia Mason Stadium)

Date: 08/21/2023

Attendance: 180

Stadium: Georgia Mason Stadium

Officials: Referee, Zachary Smith; Asst. Referee, Zach

Fingerprint Asst. Referee, John Henderson

Goals By Period	1	2	Total
Delaware	1	1	2
Georgia Mason	0	0	0

## Delaware 2

Pos	#	Player	Starters	SH	SOG	G	A	MIN
GO	1	Hall, Sophie	0	0	0	0	0	90
DEF	2	Fisher, Maura	1	1	0	0	90	
DEF	7	Selles, Ava	0	0	0	0	90	
FWD	10	Oleagun-Dickson, Adiat	1	0	0	0	60	
FWD	11	Agnew, Ava	0	0	0	0	68	
MID	15	Lubic, Lilli	3	1	1	1	44	
FWD	16	Groh, Maggie	0	0	0	1	68	
FWD	20	Riley, Gabby	1	0	0	0	90	
DEF	21	Mundy, Ryan	0	0	0	0	68	
DEF	22	Collins, Callista	0	0	0	0	90	
FWD	32	Zepose, Sophie	1	1	0	0	46	
Substitutes								
FWD	6	Selles, Lailah	0	0	0	0	39	
FWD	8	Saldarini, Cassandra	0	0	0	0	21	
FWD	14	Bley, Olivia	0	0	0	0	44	
FWD	25	Reid, Talaya	0	0	0	0	24	
MID	26	Vogel, Brooke	1	1	1	0	90	
FWD	27	Hoover, Olivia	0	0	0	0	4	
<b>Totals</b>				8	4	2	2	990

#	Goalkeepers	Minutes	GA	Saves
1	Hall, Sophie	90:00	0	5
<b>Totals</b>			0	5

Shots By Period	1	2	Total
Delaware	6	2	8
Georgia Mason	1	10	11

Saves By Period	1	2	Total
Delaware	1	4	5
Georgia Mason	2	0	2

## Scoring Summary

Time	Team	Goal Scorer	Assist	Description
19:24	UDE	Lilli Lubic	Maggie Groh	GOAL by UDE Lubic, Lilli Assist by Groh, Maggie.
81:11	UDE	Brooke Vogel	Lilli Lubic	GOAL by UDE Vogel, Brooke Assist by Lubic, Lilli.

Cautions and Ejections: 76:29 (YELLOW), #90 Glenn Chrapek (GNU) 81:16 (YELLOW), #27 Carly Powers (GNU) 88:31 (YELLOW), #6 Ariana Bliven (GNU)

Bucknell (0-2-0, 0-0-0) vs- Delaware (2-0-0, 0-0-0)  
08/17/2023 at Newark, Del. (Stuart & Suzanne Grant Stadium)

Date: 08/17/2023

Attendance: 317

Stadium: Stuart & Suzanne Grant Stadium

Officials: Referee, Ryan Neel; Asst. Referee, Aaron Gracy; Asst.

Referee, Kenny Freeman; AR, Official, Brian Coleman

Goals By Period	1	2	Total
Bucknell	0	1	1
Delaware	1	1	2

## Bucknell 1

Pos	#	Player	Starters	SH	SOG	G	A	MIN
GO	0	Seaton, Jess	0	0	0	0	0	90
FWD	4	Parkay, Gaby	2	1	0	0	65	
	7	Connell, Katie	2	1	1	0	71	
DEF	8	Traynor, Riley	0	0	0	0	90	
MID	9	Hees, Sydney	0	0	0	0	77	
MID	10	Howard, Dani	1	1	0	0	65	
	13	Polladino, Ava	0	0	0	0	65	
DEF	15	Gavin, Emma	0	0	0	0	33	
DEF	22	Thomson, Louisa	1	0	0	0	59	
FWD	27	Andican, Hanna	1	0	0	0	74	
DEF	31	DeLamartine, Leah	0	0	0	0	90	
Substitutes								
DEF	5	Politti, Julia	0	0	0	0	57	
MID	12	Hayes, Riley	1	0	0	1	49	
MID	17	Grove, Cathryn	0	0	0	0	13	
MID	18	Toth, Audra	1	0	0	0	8	
MID	19	Bolton, Leah	1	0	0	0	44	
FWD	20	Kozlowski, Ashley	0	0	0	0	12	
DEF	23	Kozlowski, Kile	0	0	0	0	25	
MID	24	Finchett, Ally	0	0	0	0	3	
<b>Totals</b>				10	3	1	1	990

#	Goalkeepers	Minutes	GA	Saves
0	Seaton, Jess	90:00	2	4
<b>Totals</b>			2	4

Shots By Period	1	2	Total
Bucknell	4	4	8
Delaware	6	5	11

Saves By Period	1	2	Total
Bucknell	2	2	4
Delaware	1	1	2

## Scoring Summary

Time	Team	Goal Scorer	Assist	Description
21:34	DEL	Maggie Groh	Callista Collins	GOAL by DEL Groh, Maggie Assist by Collins, Callista.
77:42	DEL	Katie Connell	Riley Hayes	GOAL by BUCK Connell, Katie Assist by Hayes, Riley.
85:25	DEL	Talaya Reid	Maggie Groh	GOAL by DEL Reid, Talaya Assist by Groh, Maggie.

Cautions and Ejections: 49:21 (YELLOW), #15 Lilli Lubic (DEL) 75:10 (YELLOW), #11 Ava Polladino (BUCK) 86:32 (YELLOW), #22 Louisa Thomson (BUCK)

Delaware (4-0-0, 0-0-0) vs- Navy (1-1-0, 0-0-0)  
08/24/2023 at Annapolis, Md. (Glenn Warner Soccer Facility)

Date: 08/24/2023

Attendance: 926

Stadium: Glenn Warner Soccer Facility

Officials: Referee, Paul Williams; Asst. Referee, Josh Pitt; Asst.

Referee, Brendan Orto

Goals By Period	1	2	Total
Delaware	0	1	1
Navy	0	0	0

## Delaware 1

Pos	#	Player	Starters	SH	SOG	G	A	MIN
GO	1	Hall, Sophie	0	0	0	0	0	90
DEF	2	Fisher, Maura	0	0	0	0	90	
DEF	7	Selles, Ava	0	0	0	0	90	
FWD	10	Oleagun-Dickson, Adiat	2	2	1	0	59	
FWD	11	Agnew, Ava	1	1	0	0	47	
FWD	16	Groh, Maggie	2	2	0	0	63	
FWD	20	Riley, Gabby	0	0	0	0	90	
DEF	21	Mundy, Ryan	0	0	0	0	33	
DEF	22	Collins, Callista	0	0	0	0	90	
MID	26	Vogel, Brooke	0	0	0	1	52	
FWD	32	Zepose, Sophie	0	0	0	0	90	
Substitutes								
FWD	6	Selles, Lailah	0	0	0	0	43	
FWD	8	Saldarini, Cassandra	0	0	0	0	36	
FWD	14	Bley, Olivia	0	0	0	0	37	
MID	15	Lubic, Lilli	0	0	0	0	53	
FWD	25	Reid, Talaya	0	0	0	0	36	
FWD	27	Hoover, Olivia	0	0	0	0	1	
<b>Totals</b>				5	5	1	1	990

#	Goalkeepers	Minutes	GA	Saves
1	Hall, Sophie	90:00	0	3
<b>Totals</b>			0	3

Shots By Period	1	2	Total
Delaware	3	4	7
Navy	3	8	11

Saves By Period	1	2	Total
Delaware	3	4	7
Navy	1	1	2

## Scoring Summary

Time	Team	Goal Scorer	Assist	Description
52:45	DEL	Adiel Oleagun-Dickson	Brooke Vogel	GOAL by DEL Oleagun-Dickson, Adiel Assist by Vogel, Brooke.

Cautions and Ejections: 87:35 (YELLOW), #20 Chere Cozzen (NAVY)



## SEASON STATS

2025 University of Delaware Women's Soccer  
Overall Statistics (as of Aug 24, 2025)

Records:				
All Games				
	Overall	Home	Away	Neutral
	4-0	2-0	2-0	0-0
Date	Opponent	W/L	Score	Pts
08/14/2025	MOUNT ST. PIERRE	W	3-0	33
08/17/2025	BUCKNELL	W	2-1	317
08/21/2025	at George Mason	W	2-0	130
08/24/2025	at Navy	W	1-0	926
<b>Team Statistics</b>		<b>DEL</b>	<b>OPP</b>	
<b>GOAL STATISTICS</b>				
Goals-Shot Att.	10-50	3-37		
Goals Per Game	2.50	0.75		
Shot Pct.	0.200	0.081		
Shots on Goal-Pct.	24-90	16-67		
SOG Pct.	0.480	0.432		
Shots/Goals	12.5	9.5		
CORNER KICKS	20	15		
PENALTY KICKS	0-0	0-0		
<b>PENALTIES</b>				
Yellow Cards	1	0		
Red Cards	0	0		
<b>ATTENDANCE</b>				
Total	572	1,076		
Duke-Avg Per Date	2/280	2/538		
Neutral Site #-Avg	0/			

#	Player	GP	G	A	PTS	SH	SH%	SOG	SOG%	YO-AC	GW	PK-RT
16	Stolt, Maggie	4	3	0	0	11	0.273	9	0.818	0-0	1	0-0
10	Olaogun-Dickson, Adist	4	2	0	4	6	0.333	3	0.500	0-0	1	0-0
23	Hall, Tahya	4	2	0	4	4	0.500	3	0.750	0-0	1	0-0
26	Vogel, Brooke	4	1	2	4	5	0.200	1	0.200	0-0	0	0-0
13	Lutz, Lili	4	1	1	3	4	0.250	1	0.250	1-0	1	0-0
14	Bley, Olivia	4	1	0	2	4	0.250	2	0.500	0-0	0	0-0
22	Collins, Chelsea	4	0	1	1	0	0.000	0	0.000	0-0	0	0-0
21	Mundy, Ryan	4	0	1	1	1	0.000	0	0.000	0-0	0	0-0
20	Wiley, Abby	4	0	1	1	3	0.000	0	0.000	0-0	0	0-0
8	Seldarini, Cassandra	4	0	1	1	3	0.000	1	0.333	0-0	0	0-0
11	Agred, Ava	4	0	0	0	1	0.000	1	1.000	0-0	0	0-0
17	Eyman, Alayna	1	0	0	0	0	0.000	0	0.000	0-0	0	0-0
2	Fisher, Haun	4	0	0	0	2	0.000	1	0.500	0-0	0	0-0
9	Fritz, Sarah	1	0	0	0	0	0.000	0	0.000	0-0	0	0-0
1	Hall, Sophie	4	0	0	0	0	0.000	0	0.000	0-0	0	0-0
27	Hoover, Olivia	4	0	0	0	1	0.000	1	1.000	0-0	0	0-0
7	Shelton, Ava	4	0	0	0	0	0.000	0	0.000	0-0	0	0-0
6	Sallee, Lailah	4	0	0	0	2	0.000	0	0.000	0-0	0	0-0
32	Zappos, Sophie	4	0	0	0	3	0.000	1	0.333	0-0	0	0-0
Total		4	10	10	30	50	0.200	34	0.680	1-0	4	0-0
Opponent		4	3	3	0	37	0.081	30	0.432	0-0	0	0-0

#	Stats	GP	MIN	GP	MIN	PTS	PCT	W-L-T	SHO
1	Hall, Sophie	4	340:00	3	0.75	13	0.813	4-0-0	3/0
	Total	4	340:00	3	0.75	13	0.813	4-0-0	3
	Opponents	4	340:00	10	1.90	14	0.583	—	0

Goals by Period	1st	2nd	Total
Delaware	4	6	10
Opponents	1	2	3

Shots by Period	1st	2nd	Total
Delaware	22	38	60
Opponents	10	27	37

Saves by Period	1st	2nd	Total
Delaware	3	30	33
Opponents	6	6	12

Corners by Period	1st	2nd	Total
Delaware	9	11	20
Opponents	7	8	15

Fouls by Period	1st	2nd	Total
Delaware	8	20	28
Opponents	13	30	43

## NCAA RANKINGS

## NCAA Statistics

Delaware - 2025-26 Women's Soccer Ranking Summary thru game 08/24/2025

Statistic	National Rank	Conference Rank	Value	National Leader	Value	Conference Leader	Value
Assists Per Game (292 ranked)	39	1	2.50	Colorado Towson	5.50 5.50	Delaware	2.50
Corner Kicks Per Game (345 ranked)	132	3	5.00	Harvard	14.00	Middle Tenn.	5.75
Fouls Per Game (345 ranked)	16	2	5.25	Saint Francis	3.50	Jacksonville St.	5.00
Goal Differential (297 ranked)	29	2	7	Colorado Stanford	17 17	Western Ky.	9
Goals-Against Average (345 ranked)	90	2	0.750	11 teams tied	0.000	Western Ky.	0.667
Penalty Kicks (89 ranked)	89	3	0.000	74 teams tied	1.000	FIU	1.000
Points Per Game (332 ranked)	50	2	7.50	Belarmine	17.50	Western Ky.	8.67
Red Cards (1 ranked)				17 teams tied	1	Kennesaw St.	1
Save Pct (345 ranked)	96	1	0.813	11 teams tied	1.000	Delaware UTEP	0.813 0.813
Saves Per Game (345 ranked)	208	6	3.25	Marquette	11.67	Louisiana Tech	5.75
Scoring Offense (326 ranked)	53	2	2.50	Belarmine	6.50	Western Ky.	3.67
Shot Accuracy (344 ranked)	136	8	0.480	MJT	0.737	Middle Tenn.	0.600
Shots Per Game (345 ranked)	156	5	12.50	Brown	39.00	Western Ky.	14.67
Shots on Goal Per Game (344 ranked)	128	4	6.00	Belarmine Brown	18.00 18.00	Middle Tenn.	8.25
Shutout Percentage (249 ranked)	62	2	0.500	10 teams tied	1.000	Western Ky.	0.667
Total Assists (256 ranked)	22	1	10	Colorado	22	Delaware	10
Total Goals (292 ranked)	28	2	10	Colorado	20	Western Ky.	11
Total Points (318 ranked)	28	1	30	Colorado	62	Delaware	30
Win-Loss-Tied Percentage (313 ranked)	1	1	1.000	34 teams tied	1.000	Delaware	1.000
Yellow Cards (234 ranked)	234	8	1	Jackson St.	14	UTEP	7

# delaware TV ROSTER



**0**  
**CHARLOTTE KULIKOSKY**  
Freshman  
GK | 5-9  
Arlington, Va.  
Washington-Virginia



**1**  
**SOPHIA HALL**  
Freshman  
GK | 5-8  
Malvern, Pa.  
Academy of Notre Dame



**2**  
**MAURA FISHER**  
Freshman  
D/M | 5-7  
West Chester, Pa.  
Reed Henderson



**4**  
**AVA TICCONI**  
Freshman  
D | 5-4  
Ontario, Canada  
Assumption Catholic



**6**  
**LEILAH SALLEE**  
Senior  
F | 5-0  
Fleetwood, Pa.  
Fleetwood Area



**7**  
**AVA SALLEE**  
Sophomore  
D | 5-3  
Fleetwood, Pa.  
Fleetwood Area



**8**  
**CASSANDRA SALDARINI**  
Junior  
F | 5-2  
Morris Plains, N.J.  
Parsippany Hills



**9**  
**SARAH FRITZ**  
Sophomore  
M/F | 5-6  
Mifflinburg, Pa.  
Mifflinburg Area



**10**  
**ADIAT OLAOGUN-DICKSON**  
Freshman  
M/F | 5-6  
Sicklerville, N.J.  
Timber Creek Regional



**11**  
**AVA AGRESTI**  
Sophomore  
F | 5-7  
Monmouth Beach, N.J.  
Shore Regional



**12**  
**MAGGIE HOLLOWAY**  
Sophomore  
M/F | 5-5  
Douglassville, Pa.  
Douglass Boone Area



**13**  
**WILLA PRATT**  
Junior  
M | 5-4  
Sauquoit, N.Y.  
New Hartford



**14**  
**OLIVIA BLEY**  
Sophomore  
F | 5-6  
West Chester, Pa.  
Westtown School



**15**  
**LILLI LUBIC**  
Freshman  
M | 5-6  
Ashburn, Va.  
Independence



**16**  
**MAGGIE GROH**  
Junior  
F | 5-8  
York, Penn.  
Dallastown



**17**  
**ALAYNA EYMAN**  
Junior  
D | 5-6  
North East, Md.  
Rising Sun

# delaware TV ROSTER



## 20

**GABBY  
RILEY**

Sophomore  
M | 5-5  
Middletown, Del.  
Middletown



## 21

**RYAN  
MUNDY**

Senior  
F | 5-2  
Wilmington, Del.  
Wilmington



## 22

**CALISTA  
COLLINS**

Junior  
D | 5-7  
River Edge, N.J.  
Saddler Diver Day



## 24

**GIANNA  
BERKLEY**

Freshman  
GK | 5-8  
Jackson, N.J.  
Jackson Memorial



## 25

**TAISIYA  
REID**

Junior  
F | 5-3  
Solomons, Md.  
Patuxent



## 26

**BROOKE  
VOGEL**

Sophomore  
M | 5-67  
Mickleton, N.J.  
Gloucester County



## 27

**OLIVIA  
HOOVER**

Senior  
F | 5-7  
Glen Ridge, N.J.  
Glen Ridge



## 32

**SOPHIA  
ZEPPPOS**

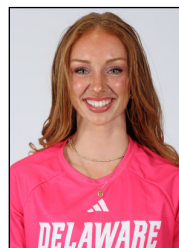
Freshman  
M/F | 5-8  
Reading, Pa.  
Wyomissing Area



## 33

**CONSTANZE  
VIEHMANN**

Senior  
D | 5-7  
Landenburg, Germany  
TSG 1899 Hoffenheim



## 99

**LEAH  
RHINEHART**

Sophomore  
GK | 5-9  
Fallston, Md.  
Fallston



**KELLY  
LAWRENCE**

Head  
Coach  
3rd season  
Indiana '10



**BECKY  
EDWARDS**

Associate Head  
Coach  
1st season  
Florida State '10



**SHANNON  
COLEY**

Assistant  
Coach  
3rd season  
Oakland '12