



# DELAWARE FIGHTIN' BLUE HENS

## ICE HOCKEY GAME NOTES

a new era.



Brendan Thomas, Director, Communications & Creative Services | 207-400-2840 | brendant@udel.edu

### SERIES HISTORY

All Time.....	0-2
Streak.....	L2
At Home.....	0-2
On the Road.....	n/a
Largest Win.....	n/a
Largest Loss.....	1-0, 10/18/25
Last Win.....	n/a
Last Loss.....	1-0, 10/18/25

### HOW TO FOLLOW

Stream.....	FloHockey
Play-by-Play.....	Arnav Pokhrel
Analyst.....	Spencer Buley
X/Instagram.....	@Delaware_IH
Live Stats.....	bluehens.com

### WHO ARE WE

Only refer to our institution as the **University of Delaware** or **UD**. Do not use "U of D," "UofD," "the U of D" or "UDel." Do not use periods in "UD."

We are the Fightin' Blue Hens on first reference and Blue Hens, Hens, or Blue & Gold after that.

### MEDIA RELATIONS

For interview requests for ice hockey student-athletes or coaches, please contact Brendan Thomas, Director of Communications & Creative Services.

Email..... [brendant@udel.edu](mailto:brendant@udel.edu)  
Cell..... 207-400-2840

## DELAWARE (2-18-0, 1-11-0 AHA)

**GM**  
21-22



**Head Coach:** Allison Coomey  
**Record at UD:** 2-18-0 (1st season)  
**Career Record:** same  
**Last:** Lost, 4-2 at RIT



## SYRACUSE (8-11-3, 4-6-2 AHA)

**Head Coach:** Britni Smith  
**Record at SU:** 40-82-8 (4th season)  
**Career Record:** same  
**Last:** Tied, 2-2 vs. Robert Morris (1-0 SOL)

jan. 2 (6 p.m.) / jan. 3 (3 p.m.) | syracuse, n.y. | tennity ice pavilion (350) | flohockey

### PUCK DROP

✧ The University of Delaware hockey team opens the 2026 calendar year with an Atlantic Hockey America (AHA) series at Syracuse. UD starts the second half of AHA play, playing its final 12 games against conference foes, with eight contests on the road.

✧ Delaware is looking for the program's first-ever road victory as it plays its third-consecutive weekend in the state of New York after closing out the first half of the season with series at Union and RIT.

✧ This weekend will be the Fightin' Blue Hens' first contests against an opponent they had already played. Delaware and Syracuse played a pair of one-goal games in Newark back in October. In the weekend opener, **Kaitlin Finnegan** scored the equalizer in the second period and **Charlotte Payne** made 48 saves as UD secured its first AHA point. However, Syracuse scored with six seconds remaining in overtime for the 2-1 victory. **Mattie Robitzer** made 30 saves in the series finale, but the Blue Hens fell 1-0.

✧ **Kaitlin Finnegan** leads Delaware with five goals and three assists for eight points, while **Katlynn Charlton** adds four goals and three assists for seven points to go along with a team-leading 69 shots on goal. **Tiana McIntyre** has two goals and a team-high four assists for six points from the blue line.

✧ In goal, **Mattie Robitzer** owns a .917 save percentage and 409 saves in 10 contests, while **Charlotte Payne** has been one of the best freshman goaltenders in the country with a .916 save percentage and 439 saves in 11 games.

✧ Delaware leads the country in total saves (848) and blocked shots (480). The Blue Hens are the second-least penalized team in AHA, taking 70 penalties (3.5 per game) through 20 games.

### HEN LEADERS



#### goals

5

kaitlin finnegan



#### assists

4

tiana mcintyre



#### shots

69

katlynn charlton



#### SV%

.917

mattie robitzer

### 2025-26 SCHEDULE

**sept. 26/27**  
Newark, Del.  
L, 4-1 | L, 5-2

**oct. 4/5**  
Newark, Del.  
L, 5-2 | W, 2-1

**oct. 10/11**  
Newark, Del.  
L, 5-0 | L, 7-0

**oct. 17/18**  
Newark, Del.  
L, 2-1 (ot) | L, 1-0

**oct. 24/25**  
Newark, Del.  
L, 5-0 | L, 5-0

**oct. 31/nov. 1**  
Erie, Pa.  
L, 3-2 (ot) | L, 4-0

**nov. 8/9**  
Providence, R.I.  
L, 3-0 | L, 3-2 (ot)

**nov. 14/15**  
Newark, Del.  
W, 5-3 | L, 5-0

**nov. 28/29**  
Schenectady, N.Y.  
L, 7-0 | L, 3-0

**dec. 5/6**  
Rochester, N.Y.  
L, 5-2 | L, 4-2

**jan. 2/3**  
Syracuse, N.Y.  
6 pm / 3 pm  
FloHockey

**jan. 8/9**  
Newark, Del.  
6 pm / 2 pm  
FloHockey

**jan. 16/17**  
St. Charles, Mo.  
4 pm / 1 pm  
FloHockey

**jan. 23/24**  
University Park, Pa.  
3 pm / 2 pm  
Big Ten

**jan. 30/31**  
Newark, Del.  
6 pm / 2 pm  
FloHockey

**feb. 6/7**  
Moon Township, Pa.  
3 pm / 3 pm  
FloHockey

\*all times ET

# A NEW ERA

After a nearly 18-month wait, the new era is finally here and the University of Delaware Fightin' Blue Hens are officially full members of Conference USA as of July 1, 2025. Fourteen of UD's 22 varsity programs will be housed in CUSA, with seven others joining as affiliate members in the Atlantic Sun (women's lacrosse, men's and women's swimming & diving), Atlantic 10 (men's lacrosse), Mid-American Conference (rowing), The Summit League (men's soccer), and Atlantic Hockey America (ice hockey). Field hockey will be joining Mountain Pacific Sports Federation (MPSF) for the 2025 season, joining UC Davis as one of two founding members of the league's sponsorship

An athletic department built on history and tradition, Delaware brings an abundance of success to CUSA having won 10 national championships, 172 team conference titles, 282 individual conference crowns, 342 major conference awards, 2,655 all-league selections, and 543 all-americans.

UD student-athletes complement their athletic success with strong academic performances. During the 2024-25 academic year, the Blue Hens compiled a cumulative 3.41 grade-

point average—the highest in department history, excluding academic terms impacted by COVID-19. This marked the 11th-consecutive year and the 23rd-straight semester in which UD student-athletes have posted a 3.00 GPA or better.

The move will push the Delaware brand across the nation, spanning from the northeast down into Florida, and west as far as New Mexico. However, the reach won't stop there. At least five football games will hit the national scene on CBS Sports Network/ESPN family of networks, including a non-conference tilt on FOX against Colorado. Men's and women's basketball will also have the chance to play nationally televised games as part of CUSA's media rights agreement with CBS Sports Network and ESPN.

Speaking of reach, Delaware's initial announcements about joining Conference USA reached over two billion people according to social media analytics. Put that into perspective - just over one million people live in the state of Delaware. That means these announcements reached over 2,000 Delawares.

With the announcement of Delaware football transitioning to FBS, the University was committed to adding a women's sport to continue to stay Title IX compliant. The University looked at a number of key criteria, including the feasibility, continued commitment to gender equity, recruiting footprint, conference fit, facilities, and ability to win championships.

In its due diligence, the University of Delaware performed a feasibility study funded by the Industry Growth Fund, a joint initiative of the NHL and NHLPA, with the goal of empowering schools exploring the addition of Men's and/or Women's DI varsity ice hockey. The results of the study reinforced UD's findings and made clear that women's ice hockey was the best path forward. In addition to this being the right decision for the University of Delaware, there's also the great benefit of helping to grow a sport that is popular in this region of the country.



## CUSA SPONSORED DELAWARE SPORTS

- Baseball
- M/W Basketball
- W Cross Country/Track & Field
- Football
- M/W Golf
- W Soccer
- Softball
- M/W Tennis
- Volleyball

## OTHER DELAWARE SPORTS AFFILIATIONS

- Field Hockey
- Ice Hockey
- M Lacrosse
- W Lacrosse
- MPSF
- W Rowing
- M Soccer
- M/W Swim/Dive
- Mid-American
- The Summit League
- Atlantic Sun

**QUICK FACTS**

School.....	University of Delaware
Location.....	Newark, Del.
Founded .....	1743
Enrollment .....	24,039
Interim President.....	Dr. Laura Carlson
School Website.....	www.udel.edu
Nickname .....	Fightin' Blue Hens
School Colors .....	Blue & Gold
Athletics Website .....	www.bluehens.com
Interim Director of Athletics.....	Jordan Skolnick
Conference.....	Atlantic Hockey America
Website .....	www.atlantichockeyamerica.com

**HOCKEY PROGRAM**

Arena.....	Fred Rust Ice Arena
Capacity .....	1,350
First Season of Ice Hockey.....	2025-26
All-Time Record .....	2-18-0
All-Time Fred Rust Record.....	2-10-0
National Championships.....	0
Conference Championships.....	0
Head Coach.....	Allison Coomey (Niagara '02)
Career Record.....	2-18-0 / 1st season
Record at UD.....	same
Letterwinners Returning/Lost.....	0/0
Starters Returning/Lost .....	0/0
Newcomers.....	22
2024-25 Overall Record .....	0-0
2024-25 AHA Record.....	0-0
2024-25 AHA Finish.....	n/a
2024-25 Postseason.....	n/a

**TABLE OF CONTENTS**

Storylines.....	3-6
Program information.....	3
Statistical comparison.....	3
Delaware record when.....	4
The last time.....	5
AHA standings.....	6
Roster & Pronunciations.....	7
Head coach Allison Coomey.....	8
Assistant coaches & support staff.....	9
University of Delaware.....	10
Career stats & highs.....	11-13
Starters by game.....	14
Game-by-game leaders.....	15
Scoring plays.....	16
Team stats.....	17
NCAA rankings.....	18-19
TV roster.....	20

**WHAT TO LOOK FOR...**

- A victory this weekend would be the program's first-ever win on the road.
- Nine Blue Hens are still looking for their first collegiate goal, and two (**Charlie Voge** and **Suvina Heidt**) are in search of their first collegiate point.

**22nd varsity program**

Delaware announced the addition of ice hockey as the University's 22nd varsity intercollegiate program in December 2023. The addition of hockey was in conjunction with Delaware's transition to Conference USA and FBS football and UD's continued commitment to stay Title IX compliant.

**45th D1 program**

Delaware becomes the 45th college or university to sponsor a Division I women's ice hockey program. The Blue Hens are the first program to start at the Division I level since Assumption College started its program ahead of the 2023-24 season.

**inaugural roster**

The Blue Hens have 21 student-athletes on their inaugural roster, featuring 17 freshmen and four transfers. The 17 freshmen on the roster is the most on any roster in the country, three more than Providence, which is second with 14 freshmen.

**first state, first season**

The inaugural season is not only the first year that UD will have a Division I program, but the Blue Hens are the first Division I ice hockey team, men or women, in the state of Delaware.

The only NHL player to have ever come from the First State is Mark Eaton, who played 13 seasons for Philadelphia, Nashville, Pittsburgh, and the New York Islanders.

**hockey in the south**

Of the 45 Division I women's ice hockey teams in the country, the University of Delaware is the second-most southern program. Only Lindenwood in St. Charles, Missouri, also in Atlantic Hockey America (AHA), is further south.

**for the 302**

Delaware is one of 11 states that are represented by one area code. Delaware is the 302, while the other states are: Alaska, Hawaii, Maine, Montana, New Hampshire, North Dakota, Rhode Island, South Dakota, Vermont, and Wyoming.

**pro relations**

A pair of Blue Hens are related to professional hockey players in both the NHL and PWHL.

Freshman forward **Katelynn Charlton** is the cousin of Mikyla Grant-Mentis who currently plays for PWHL Seattle.

Assistant Coach **Melissa Samoskevich** has twin younger siblings who both play professional hockey. Her younger brother, Mackie, was a first-round draft pick (24th overall) by the Florida Panthers in 2021 and has won two Stanley Cups. Her sister, Maddy, was drafted in the fifth round (39th overall) by PWHL Vancouver in 2025.

**proud members of aha**

Delaware is the seventh member of Atlantic Hockey America (AHA), joining fellow league members Lindenwood, Mercyhurst, Penn State, RIT, Robert Morris, and Syracuse. Formerly College Hockey America (CHA), the conference merged with the men's Atlantic Hockey Association prior to the 2024-25 season to form the AHA which now features 10 men's teams and seven women's teams.

The AHA has had alumni compete for eight countries at the Winter Olympics and skated off with 14 medals, including four gold. Professionally, several conference alumni are currently on Professional Women's Hockey League (PWHL) rosters, including three selections in the 2025 PWHL Draft in June.

**STATISTICAL COMPARISON (as of 12/18)**

Category	DEL	NCAA	AHA	SYR	NCAA	AHA
Scoring Offense	1.05	44th	7th	1.82	38th	6th
Scoring Defense	4.00	43rd	7th	3.00	34th	5th
Scoring Margin	-2.95	44th	7th	-1.18	37th	5th
Power-Play Pct.	.041	45th	7th	.101	39th	6th
Penalty Killing Pct.	.806	27th	4th	.756	41st	7th
Goals	21	44th	7th	40	29th	6th
Assists	27	44th	7th	60	30th	6th
Points	48	44th	7th	100	29th	6th
Power Play Goals	3	43rd	7th	8	29th	5th
Shorthanded Goals	1	15th	4th	--	--	--
Saves	848	1st	1st	642	7th	4th
Faceoff Win Pct.	.404	44th	7th	.477	29th	5th
Penalty Minutes per Game	7.55	24th	6th	8.32	16th	5th

### no stranger to starting programs

Head coach **Allison Coomey** was hired as the Blue Hens' first head coach in March 2024. She spent a year and a half compiling a roster and coaching staff ahead of the program's inaugural season.

This isn't the first time that Coomey has helped launch a new program. As a student-athlete, she was a member of the inaugural women's ice hockey team at Niagara University. She played four seasons for the Purple Eagles, serving as an alternate captain her senior season when Niagara advanced all the way to the 2002 NCAA Women's Frozen Four.

### a day for the record books

The Blue & Gold picked up the first victory in program history on Sunday, October 5, securing a 2-1 win against Holy Cross. **Charlotte Payne** made 49 saves, then a career-high, while **Meera Smith** scored her first-career goal in the second period and **Katelynn Charlton** scored the program's first power play goal which proved to be the game-winner.

### first commit, first goal

Freshman **Francesca Barresi** cemented herself in the program record book when she scored the first-ever goal in Delaware ice hockey history during the Blue Hens' inaugural game against LIU on September 26. The Ottawa, Canada native blocked a pass and came in alone on a breakaway to net her first collegiate goal midway through the third period. It was only fitting as Barresi was the first player to commit to play for the program in November 2024.

### blocking shots

The Blue Hens' defense has registered 480 blocked shots, which leads all of Division I. Robert Morris is second in the country with 364 blocks.

Individually, **Lexie Lonask** leads the AHA and the entire country with 86 blocked shots. She has two games with at least 10 blocks, including a career-high 11 at No. 15/15 Brown on November 9. **Bailey Gray** (53) and **Kaitlin Finnegan** (46) are also among the top 10 nationally and **Emma MacIntyre** (41) is tied for 12th.

### faceoff aces

**Meera Smith** leads the Blue Hens and ranks 10th in the AHA with 150 faceoff wins. **Francesca Barresi** has played 13 games at center and has 114 faceoff wins and has four games with at least 12 wins.

### bringing the payne

**Charlotte Payne** owns a .916 save percentage through her first 11 games, making 439 stops on 479 shots faced. Her save percentage ranks third in the country among freshmen goaltenders who have played at least 10 games.

### charlton's big weekend

Freshman **Katelynn Charlton** was named the AHA Rookie of the Week on October 7, earning the program's first-ever weekly honor after a big weekend series against Holy Cross. In the series opener, she scored her first-career goal, part of two-goal performance to become the first Blue Hen to score multiple goals in a single game. Charlton followed that up with the eventual game-winning goal midway through the second period in the season finale. It was UD's first power play goal and provided the difference in Delaware's first win in program history, a thrilling 2-1 victory.

### no mercy from lonask

**Lexie Lonask** was named the AHA Rookie of the Week on November 4 for her performance at Mercyhurst. She scored her first-career goal with three seconds remaining in regulation to force overtime in the series opener. She also blocked 19 shots over the two games, including a then-career-high 10 blocks in the first game.

### saves on saves on saves

Delaware goaltenders **Mattie Robitzer** and **Charlotte Payne** have been exceptionally busy between the pipes this season, leading all of Division I with 848 combined saves. Overall, the duo has eight games with at least 48 saves and own six of the top-20 single-game performances in the country this season.

Robitzer has had three games with at least 50 saves this season, including a career-high 63 at RV/RV Mercyhurst which is the third-most in the country. She also had 62 saves against No. 6/6 Penn State and 57 saves against Holy Cross.

Payne has been equally impressive to start her collegiate career. Against Holy Cross, she stopped 49-of-50 shots to earn her first collegiate victory, and seal Delaware's first-ever win. Payne has made a career-high 51 saves twice - against No. 6/6 Penn State and at No. 15/15 Brown - and also had a 50-save performance at RV/RV Mercyhurst.

### diverse roster

Delaware's inaugural roster has 21 student-athletes. The roster includes 14 Americans from 11 states, six from Canada, and one from Norway. Only three of the 12 states represented (Massachusetts, Minnesota, Pennsylvania) are called home by more than one Blue Hen. The other eight states include Arizona, Colorado, Delaware, Kansas, New York, Utah, Virginia, and Wisconsin.

## DELAWARE RECORD WHEN...

	25-26	COOMEY
Overall	2-18-0	2-18-0
Conference	1-11-0	1-11-0
Non-conference	1-7-0	1-7-0
Home	2-10-0	2-10-0
Away	0-8-0	0-8-0
Neutral	0-0-0	0-0-0
Current streak	L5	L5
Current home streak	L1	L1
Current road streak	L8	L8
Current neutral streak	--	--
Day game	1-13-0	1-13-0
Night game (5pm or later)	1-5-0	1-5-0
September	0-2-0	0-2-0
October	1-8-0	1-8-0
November	1-6-0	1-6-0
December	0-2-0	0-2-0
January	0-0-0	0-0-0
February	0-0-0	0-0-0
vs. ranked opponent	0-4-0	0-4-0
Scoring first	1-3-0	1-3-0
Opponent scores first	1-15-0	1-15-0
Scoring 0-1 goals	0-12-0	0-12-0
Scoring 2 goals	1-6-0	1-6-0
Scoring 3 goals	0-0-0	0-0-0
Scoring 4+ goals	1-0-0	1-0-0
Allowing 0-1 goals	1-1-0	1-1-0
Allowing 2 goals	0-1-0	0-1-0
Allowing 3 goals	1-4-0	1-4-0
Allowing 4+ goals	0-12-0	0-12-0
Leading after 1st	1-2-0	1-2-0
Trailing after 1st	0-10-0	0-10-0
Tied after 1st	1-6-0	1-6-0
Leading after 2nd	2-1-0	2-1-0
Trailing after 2nd	0-13-0	0-13-0
Tied after 2nd	0-4-0	0-4-0
Overtime	0-3-0	0-3-0
Shootout	0-0-0	0-0-0
1-goal games	1-4-0	1-4-0
2-goal games	1-1-0	1-1-0
3-goal games	0-6-0	0-6-0
4+-goal games	0-7-0	0-7-0
Out-shooting opponent	0-1-0	0-1-0
Out-shot by opponent	2-17-0	2-17-0
Shots are even	0-0-0	0-0-0
Winning more faceoffs	0-3-0	0-3-0
Losing more faceoffs	2-15-0	2-15-0
Faceoffs are even	0-0-0	0-0-0
Taking more penalties	0-6-0	0-6-0
Taking fewer penalties	2-7-0	2-7-0
Penalties are even	0-5-0	0-5-0



### opening weekend of firsts

Delaware's inaugural weekend against LIU saw a lot of firsts across the program as 16 student-athletes made their collegiate debuts and four others made their first Blue Hen appearances.

Freshmen **Francesca Barresi** and **Billi Roman** scored their first collegiate goals, while **Katelynn Charlton** and **Lexie Lonask** recorded their first career assists.

Graduate student **Kaitlin Finnegan** (goal) and senior **Tiana McIntyre** (assist) registered their first points in the Blue & Gold after starting their careers at Lindenwood and Quinnipiac, respectively.

It was also the first game behind the bench for head coach **Allison Coomey** after 21 seasons as an assistant coach at five different programs.

### oh captain, my captains

Delaware will be led by four captains this season. Graduate student **Kaitlin Finnegan** and senior **Tiana McIntyre** will be the first Blue Hens to don the captain's "C" while juniors **Mattie Robitzer** and **Danica Mark** will serve as alternate captains.

Finnegan has appeared in 107 career games after spending her first five seasons at Lindenwood. McIntyre played 67 games over her first three seasons at Quinnipiac. Robitzer and Mark both played two seasons at Northeastern and Union, respectively.

### unique home states

Freshman **Billi Roman** (Hockessin) is the only active Division I women's ice hockey player to hail from the state of Delaware. Likewise, graduate student **Kaitlin Finnegan** (Tecumseh) is the only active player in DI from Kansas.

When senior **Tiana McIntyre** (Park City) entered her freshman season at Quinnipiac in 2022-23, she became the first woman from the state of Utah to play Division I ice hockey. There are now two as Eden Granley (American Fork) is a sophomore at St. Anselm.

Freshman **Lexie Lonask** (Chandler) is one of three active players in Division I from Arizona. The other two are Union freshmen Natalie Andelova (Laveen Village) and Isabel Powers (Scottsdale).

### home sweet home

While Delaware will be playing its first home games in Fred Rust Ice Arena this season, a pair of Blue Hens are quite familiar with the venue. Freshman **Billi Roman** played her high school hockey at Fred Rust while playing for The Tatnall School. Junior **Mattie Robitzer** grew up just over the Pennsylvania border in Kennett Square and often played youth hockey in Newark.

### norwegian national

Freshman **Ida Haave** is a member of the Norwegian National Team. A native of Kristiansand, Norway, Haave represented her home country at the 2024 and 2025 IIHF Women's World Championships. In 2024 in Austria, Haave helped lead Norway to the top spot at the Women's World Championship Division I Group A in Austria, earning a promotion into the top division in 2025 for the first time since 1997. At the 2025 games in Czechia, Haave recorded one assist in four games as Norway went 1-3 in pool play, finishing fourth of five teams in Group B.

### destined to be a blue hen

Freshman **Billi Roman** is not only the lone Delawarean on the roster, but the only woman from the First State playing Division I hockey. Hailing from Hockessin, Roman attended The Tatnall School in Wilmington, where she suited up for the boy's hockey team that played its home games at Fred Rust Ice Arena.

Roman has several relatives who attended UD, including her father and grandfather, as well as an uncle and two cousins who played for Delaware's club hockey programs. She is wearing No. 21 in honor of her late uncle, Tim Roman, who played for the Blue Hens in the early 1990s.

### twins

The genetic trait of twins runs strong on the Blue Hens roster. **Mattie Robitzer** has a twin sister - Lily - while **Tiana McIntyre** has a twin brother - Colten - who is the traveling practice goalie and EBUG for the Utah Mammoth. Head coach **Allison Coomey** has a twin sister - Alissa - while assistant coach **Melissa Samoskevich** has two younger siblings who are twins - Mackie and Maddy - who both play professional hockey.

### growing the game out west

Senior captain **Tiana McIntyre** is proud to own the title as the first Division I ice hockey player from Utah. This past summer, McIntyre began working for Smith Entertainment Group (SEG), the company that owns the NHL's Utah Mammoth and the NBA's Utah Jazz. In her role, she assists with the development and growth of youth hockey in Utah, going around the state and helping run camps and clinics. McIntyre has worked side-by-side with great women's hockey players such as former U.S. Olympians Hillary Knight and Lindsey Fry, Walter Cup Champion Dominique Petrie of the Minnesota Frost in the PWHL, and NHL veteran Alexander Kerfoot.

## THE LAST TIME DELAWARE...

Won in OT.....	
Lost in OT.....	11/9/25 at #15/15 Brown (L, 3-2)
Won in a shootout.....	
Lost in a shootout.....	
Had a shutout.....	
Was shutout.....	11/29/25 at Union (L, 0-0)
Scored 2 PP goals.....	12/6/25 at RIT
Scored 3+ PP goals.....	
Scored a shorthanded goal.....	11/14/25 vs. Lindenwood
Scored 4 goals.....	
Scored 5+ goals.....	11/14/25 vs. Lindenwood (W, 5-3)
Allowed 5+ goals.....	11/28/25 at Union (L, 7-0)
Had 4 different goal scorers.....	11/14/25 vs. Lindenwood
Had 5+ goal scorers.....	
Took 30-39 shots.....	
Took 40-49 shots.....	
Took 50+ shots.....	
Allowed 30-39 shots.....	11/29/25 at Union (39)
Allowed 40-49 shots.....	12/5/25 at RIT (46)
Allowed 50-59 shots.....	12/6/25 at RIT (50)
Allowed 60+ shots.....	10/31/25 at RV/RV Mercyhurst (66)
Blocked 20-29 shots.....	12/6/25 at RIT (23)
Blocked 30-39 shots.....	12/5/25 at RIT (31)
Blocked 40+ shots.....	11/9/25 at #15/15 Brown (44)
Did not commit a penalty.....	
Played a ranked team.....	11/9/25 at #15/15 Brown (L, 3-2 ot)
Beat a ranked team.....	

## THE LAST TIME A BLUE HEN...

Scored 2 goals.....	Finnegan, 11/14/25 vs. Lindenwood
Scored 3 goals.....	
Scored a SH goal.....	Finnegan, 11/14/25 vs. Lindenwood
Had 2 assists.....	Finnegan, 11/9/25 at #15/15 Brown
Had 3 assists.....	
Had 3+ points.....	
Had 5+ shots.....	Charlton, 11/15/25 vs. Lindenwood (5)
Blocked 10+ shots.....	Lonask, 11/9/25 at #15/15 Brown (11)
Made 20+ saves.....	Payne, 11/15/25 vs. Lindenwood (24)
Made 25+ saves.....	Robitzer, 10/18/25 vs. Syracuse (30)
Made 30+ saves.....	Robitzer, 11/29/25 at Union (36)
Made 40+ saves.....	Robitzer, 12/6/25 at RIT (46)
Made 50+ saves.....	Payne, 11/9/25 at #15/15 Brown (51)
Made 50+ saves.....	Robitzer, 10/31/25 at RV/RV Mercyhurst (63)
Recorded a shutout.....	

**REUNION WEEKEND**

This weekend will serve as a reunion for several members of both programs as there are multiple connections between the two rosters.

**Lindenwood University**

Kaitlin Finnegan (DEL)  
Jordan Lipson (SYR) - asst. coach

**Pittsburgh Penguins Elite**

Tiana McIntyre (DEL)  
Taylor Schooley (DEL)  
Charlotte Hallett (SYR)

**Philadelphia Jr. Flyers**

Mattie Robitzer (DEL)  
Billie Roman (DEL)  
Taylor Schooley (DEL)  
Stella Costabile (SYR)  
Jamison Hirsh (SYR)

**Shattuck St. Mary's**

Lexie Lonask (DEL)  
Jackson Kinsler (SYR)

**Ottawa Lady Sens U22**

Francesca Barresi (DEL)  
Jessica Cheung (SYR)

**Ottawa, Ontario**

Francesca Barresi (DEL)  
Jessica Cheung (SYR)  
Heidi Knoll (SYR)

**Thayer Academy (Mass.)**

Wren Abboud (DEL)  
Mia Ng (SYR)

**international experience**

The Blue Hens have loads of international experience among its roster and coaching staff.

Freshman **Ida Haave** is currently a member of the Norwegian National Team, representing her country at the 2024 and 2025 IIHF Women's World Championships.

Freshman **Katelynn Charlton** represented the Caribbean at the 2025 Dream Nations Cup in late May and early June. She helped lead her squad to the championship game, where the Caribbean fell to Egypt in overtime. The tournament was played at The Rink at American Dream in East Rutherford, New Jersey and supported by the New Jersey Devils (NHL) and New York Sirens (PWHL).

Assistant coach **Melissa Samoskevich** won gold with Team USA at the 2019 IIHF Women's World Championship in Finland, playing in all seven games and scoring two goals. Samoskevich also represented the U.S. at the 2014 and 2015 U18 Women's World Championships. She had two assists in 2014 and six goals, including a hat trick against Russia, in 2015.

Assistant coach **Taylor Willard** won a silver medal with Team USA at the 2013 U18 Women's World Championships where she picked up three assists in five games.

Head coach **Allison Coomey** was on staff with the silver-medal winning USA National Team at the 2022 Beijing Olympic Games as a team scout. She served as the head coach for the U23 U.S. Women's National Team in 2021 and 2022 and spent time as an assistant coach for the senior national team during the 2021 IIHF World Championship.

**head coaching couple**

Head coach **Allison Coomey** is married to Delaware Women's Soccer Head Coach **Kelly Lawrence**, who is in her third season at the helm of the Blue Hens.

**aha connections**

Several Blue Hens have strong ties to Delaware's new conference. Graduate student and team captain **Kaitlin Finnegan** played five seasons at Lindenwood in Missouri. Finnegan skated in 107 games for the Lions, netting seven goals and adding 16 assists. Freshman **Taylor Schooley** is the daughter of Derek Schooley, who has been the head coach of the Robert Morris men's ice hockey team since 2004. Additionally, her older sister, Kaitlyn is a junior defenseman for Robert Morris.

Additionally, head coach **Allison Coomey** (2017-24) and assistant coach **Melissa Samoskevich** (2020-22) both spent time behind the bench at Penn State.

**nhl partners**

Shortly after announcing the addition of women's ice hockey as a varsity sport, the University of Delaware made another important announcement. In a first-of-its-kind pairing, Delaware and the Philadelphia Flyers formed a strategic partnership aligned around growing the game of hockey, community engagement, and launching a world-class women's ice hockey program. The Blue Hens became the only NCAA Division I women's ice hockey program in the country to have a partnership with an NHL team.

Delaware ice hockey student-athletes will have access to career and professional development with the Flyers, as well as a chance to participate in the Flyers Next Shift program. The program was developed to allow women in college to shadow professional women throughout the organization on game nights. Other opportunities for internships in both business and hockey operations could happen as well.

The partnership also brings co-hosted youth hockey clinics to Fred Rust Ice Arena, the Blue Hens' home in Newark, as well as bringing the Flyers Community Caravan to UD.

**2025-26 AHA STANDINGS**

	AHA PTS	AHA GP	AHA RECORD	AHA OW-OL	AHA SOW-SOL	AHA GF-GA	OVERALL GP	OVERALL RECORD	OVERALL GF-GA
Penn State	36	12	12-0-0	0-0	0-0	67-10	18	17-1-0	89-20
RIT	22	14	7-7-0	0-1	0-0	42-35	22	11-11-0	64-52
Mercyhurst	21	12	7-4-1	1-0	0-1	38-25	22	11-9-2	63-50
Robert Morris	21	14	6-6-2	1-0	2-0	32-37	24	10-12-2	58-61
Lindenwood	14	12	4-7-1	0-1	0-1	26-43	22	6-14-2	48-78
Syracuse	13	12	4-6-2	2-0	1-1	20-38	22	8-11-3	40-66
<b>Delaware</b>	<b>5</b>	<b>12</b>	<b>1-11-0</b>	<b>0-2</b>	<b>0-0</b>	<b>12-49</b>	<b>20</b>	<b>2-18-0</b>	<b>21-80</b>

## 2025-26 DELAWARE NUMERICAL ROSTER

#	NAME	POS.	YR.	HT.	S/C	HOMETOWN/HIGH SCHOOL (PREV. SCHOOL)
1	Mattie Robitzer	G	Jr.	5-4	L	Kennett Square, Pa. / Unionville (Northeastern)
2	Lexie Lonask	D	Fr.	5-8	R	Chandler, Ariz. / Shattuck St. Mary's [Minn.]
3	Madison Bonavita	F	Fr.	6-0	L	Longmeadow, Mass. / Milton Academy
4	Tiana McIntyre	D	Sr.	5-8	R	Park City, Utah / Park City (Quinnipiac)
5	Emma MacIntyre	D	Fr.	5-4	R	Halifax, Nova Scotia / Stanstead College
6	Kacey Blum	F	Fr.	5-6	R	McLean, Va. / McLean
8	Victoria Borg	F	Fr.	5-4	L	Burlington, Ontario / Blyth Academy
9	Bailey Gray	D	Fr.	5-4	L	Plymouth, Minn. / Benilde-St. Margaret's
10	Danica Mark	F	Jr.	5-7	R	Duluth, Minn. / Duluth Marshall School (Union)
11	Charlie Voge	F	Fr.	5-6	R	Sun Prairie, Wisc. / St. Paul's School
13	Kaitlin Finnegan	F	Gr.	5-4	R	Tecumseh, Kan. / Kansas Connections Academy (Lindenwood)
15	Wren Abboud	F	Fr.	5-2	L	Weymouth, Mass. / Thayer Academy
16	Eva Mayo	F/D	Fr.	5-6	R	Honeoye Falls, N.Y. / Kent School
17	Suvina Heidt	D	Fr.	5-6	R	Aurora, Colo. / Winchendon School [Mass.]
18	Francesca Barresi	F	Fr.	5-6	L	Ottawa, Ontario / St. Joseph Catholic
19	Katelynn Charlton	F	Fr.	5-7	L	Brampton, Ontario / St. Martins Catholic Secondary
20	Meera Smith	F	Fr.	5-6	R	Victoria, British Columbia / Shawnigan Lake School
21	Billi Roman	F	Fr.	5-3	L	Hockessin, Del. / The Tatnall School
24	Taylor Schooley	D	Fr.	5-6	L	Moon Township, Pa. / Moon Area
27	Ida Haave	F	Fr.	5-6	L	Kristiansand, Norway / Norges Toppidrettsgymnas Lillehammer
31	Charlotte Payne	G	Fr.	5-8	L	Oakville, Ontario / Abbey Park

## ALPHABETICAL

#	NAME	POS.
15	Wren Abboud	F
18	Francesca Barresi	F
6	Kacey Blum	F
3	Madison Bonavita	F
8	Victoria Borg	F
19	Katelynn Charlton	F
13	Kaitlin Finnegan	F
9	Bailey Gray	D
27	Ida Haave	F
17	Suvina Heidt	D
2	Lexie Lonask	D
5	Emma MacIntyre	D
10	Danica Mark	F
16	Eva Mayo	F/D
4	Tiana McIntyre	D
31	Charlotte Payne	G
1	Mattie Robitzer	G
21	Billi Roman	F
24	Taylor Schooley	D
20	Meera Smith	F
11	Charlie Voge	F

## GEOGRAPHICAL

<b>Arizona (1)</b>		
2	Lexie Lonask	D
<b>Canada (6)</b>		
18	Francesca Barresi	F
5	Emma MacIntyre	D
8	Victoria Borg	F
19	Katelynn Charlton	F
31	Charlotte Payne	G
20	Meera Smith	F
<b>Colorado (1)</b>		
17	Suvina Heidt	D
<b>Delaware (1)</b>		
21	Billi Roman	F
<b>Kansas (1)</b>		
13	Kaitlin Finnegan	F
<b>Massachusetts (2)</b>		
15	Wren Abboud	F
3	Madison Bonavita	F
<b>Minnesota (2)</b>		
9	Bailey Gray	D
10	Danica Mark	F
<b>New York (1)</b>		
16	Eva Mayo	F/D
<b>Norway (1)</b>		
27	Ida Haave	F
<b>Pennsylvania (2)</b>		
1	Mattie Robitzer	G
24	Taylor Schooley	D
<b>Utah (1)</b>		
4	Tiana McIntyre	D
<b>Virginia (1)</b>		
6	Kacey Blum	F
<b>Wisconsin (1)</b>		
11	Charlie Voge	F

## PRO-NUN-SEE-AY-SHUNS

#1	Mattie ROBITZER	ROW-bit-zer	#18	Francesca BARRESI	buh-reh-SEE
#2	Lexie LONASK	low-NASK	#24	Taylor SCHOOLEY	school-EE
#3	Madison BONAVIDA	bawn-uh-VEE-tuh	#27	IDA HAAVE	ee-da ho-VUH
#6	Kacey BLUM	bloom	AC	Melissa SAMOSKEVICH	sam-OH-skeh-vitch
#15	Wren ABBODD	ah-BOOD			
#17	SUVINA HEIDT	seh-VEE-nuh height			

## HEAR OUR NAMES



## ROSTER BY CLASS

### GRADUATES (1)

Kaitlin Finnegan

### SENIORS (1)

Tiana McIntyre

### JUNIORS (2)

Danica Mark  
Mattie Robitzer

### FRESHMEN (17)

Wren Abboud  
Francesca Barresi  
Kacey Blum  
Madison Bonavita  
Victoria Borg  
Katelynn Charlton  
Bailey Gray  
Ida Haave  
Suvina Heidt

Lexie Lonask  
Emma MacIntyre  
Eva Mayo  
Charlotte Payne  
Billi Roman  
Taylor Schooley  
Meera Smith  
Charlie Voge



### THE COOMEY FILE

**Hometown:** Baldwinsville, N.Y.  
**Alma Mater:** Niagara '02  
**Degree:** Education  
**Master's:** School Counseling  
**Years in Coaching:** 22nd in 2025-26

### NOTABLE HIGHLIGHTS

2019 AHCA Women's Hockey Assistant COY  
 2013 National Champ. Appearance (BU)  
 2011 National Champ. Appearance (BU)  
 2002 Niagara Team Captain  
 2002 Women's Frozen Four  
 1999 Niagara WLAX Rookie of the Year

### AS DELAWARE HEAD COACH

<b>Year</b>	1st in 2025-26
<b>Overall Record</b>	2-18-0
<b>Home</b>	2-10-0
<b>Away</b>	0-8-0
<b>Neutral</b>	0-0-0
<b>vs. Ranked Teams</b>	0-4-0
<b>In AHA Games</b>	1-11-0

### COOMEY YEAR-BY-YEAR

YEAR	W-L-T	PCT.	CONF
2025-26	2-18-0	.100	1-11-0
<b>TOTAL</b>	<b>2-18-0</b>	<b>.100</b>	<b>1-11-0</b>

**First career win:** 2-1 vs. Holy Cross, 10/5/25  
**Postseason:**

### ALL-TIME VS OPPONENTS

<b>Brown</b>	0-2-0
<b>Holy Cross</b>	1-1-0
<b>LIU</b>	0-2-0
<b>Lindenwood</b>	1-1-0
<b>Mercyhurst</b>	0-2-0
<b>Penn State</b>	0-2-0
<b>RIT</b>	0-2-0
<b>Robert Morris</b>	0-2-0
<b>Syracuse</b>	0-2-0
<b>Union</b>	0-2-0

## HEAD COACH ALLISON COOMEY

With over two decades of women's ice hockey coaching experience, the University of Delaware selected Allison Coomey to be the inaugural head coach of the women's ice hockey program on March 26, 2024.

Coomey comes to Newark after spending the past seven seasons at Penn State. She served as an assistant coach for three seasons before being promoted to associate head coach in 2020-21.

Over the course of her career, Coomey has coached four student-athletes to the Olympics, eight to national teams, four All-Americans, 15 major conference award winners, and 47 all-conference selections over her time at Penn State and Boston U.

Coomey and the Nittany Lions captured the past two league tournament titles, earning a bid to the NCAA Tournament. The team also claimed the CHA regular season title in three of the past four seasons.

Primarily responsible for coaching defense, Coomey's leadership turned the Nittany Lions into one of the best defensive units in the country by allowing just 1.88 goals per game over the past five seasons dating back to 2019-20.

Selected for various international coaching roles with USA Hockey, Coomey was on staff with the silver-medal winning USA National Team at the 2022 Beijing Olympic Games as a team scout and extension of the coaching staff. Coomey also served as the head coach for the U23 US Women's National Team in 2021 and 2022.

Coomey also spent time as an assistant coach for the USA senior national team during the 2021 IIHF World Championship. She was also a member of USA Hockey's scouting staff at the 2019 IIHF U18 Women's World Championship.

At the 2019 America Hockey Coaches Association Convention, Coomey received the AHCA Women's Hockey Assistant Coach of the Year award for her outstanding career resume.

Prior to Penn State, Coomey spent nine seasons at Boston University where she helped the Terriers qualify for the NCAA Tournament six times, including a pair of NCAA Championship appearances in 2011 and 2013. While at BU, Coomey coached four Olympians who combined to win six gold medals for the Canadian National Team at the 2010 and 2014 Winter Olympic Games.

A four-year letterwinner at Niagara, Coomey returned to her alma mater as an assistant coach from 2004-08, helping the Purple Eagles reach the CHA title game twice.

Before Niagara, Coomey served as an assistant coach at Plattsburgh in 2003-04 where she helped guide the Cardinals to the 2004 Eastern Collegiate Athletic Conference (ECAC) West Division III regular-season title and the NCAA Division III semifinals. Coomey secured her first job in the industry as an assistant women's hockey coach at Connecticut College.

The Baldwinsville, New York, native earned two degrees from Niagara, a bachelor's degree in education in 2002 and a master's degree in school counseling in 2008. She was a two-time ECAC All-Academic Team member and earned a spot on the Metro Atlantic Athletic Conference All-Academic Team.

Coomey was a two-sport letterwinner at Niagara, playing ice hockey and lacrosse from 1998-2002. On the ice, she served as an alternate captain during her senior season and helped the team to its most successful campaign in program history. The Purple Eagles reached the 2002 NCAA Women's Frozen Four and finished tied for third in the final national poll. On the lacrosse field, she earned the team's rookie of the year award.

### COOMEY'S COACHING ASSIGNMENTS

YEAR	SCHOOL	POSITION
2025-Pres.	Delaware	Head Coach
2017-24	Penn State	Assistant Coach / Associate Head Coach
2008-17	Boston U.	Assistant Coach
2004-08	Niagara	Assistant Coach
2003-04	Plattsburgh	Assistant Coach
2002-03	Connecticut College	Assistant Coach

### SUPERLATIVES UNDER COOMEY

Goals Scored	5, vs. Lindenwood (11/14/25)	Goals Allowed	7, 2x, last at Union (11/28/25)
Most Shots on Goal	29, vs. LIU (9/27/25)	Fewest Opponent SOG	27, vs. LIU (9/27/25)
Fewest Shots on Goal	1, vs. #6/6 Penn State (10/11/25)	Most Opponent SOG	69, vs. #6/6 Penn State (10/11/25)
Power Play Goals	2, at RIT (12/6/25)	Opponent PP Goals	2, 2x, last at RIT (12/6/25)
Shorthanded Goals	1, vs. Lindenwood (11/14/25)	Opponent SH Goals	1, 4x, last vs. Lindenwood (11/15/25)
Saves	63, at RV/RV Mercyhurst (10/31/25)	Opponent Saves	27, vs. LIU (9/27/25)
Penalties	6, vs. Robert Morris (10/25/25)	Opponent Penalties	9, vs. Syracuse (10/17/25)
Penalty Minutes	21, at RV/RV Mercyhurst (10/31/25)	Opponent Penalty Minutes	18, vs. Syracuse (10/17/25)



## ASSISTANT COACHES

### MELISSA SAMOSKEVICH



An IIHF World Champion with Team USA, Samoskevich joined the University of Delaware ice hockey program as its first-ever assistant coach in July of 2024.

Samoskevich came to Newark after spending the 2023-24 season as an assistant coach at Princeton.

With the Tigers, she assisted with video analysis, practice planning, drill implementation, special teams, and game management.

In the 2022-23 season, Samoskevich served as the director of player development and operations at her alma mater, Quinnipiac. The Bobcats went 30-10, making the ECAC Hockey semifinals and earning an at-large NCAA tournament bid.

Samoskevich spent the previous two seasons at Penn State with head coach Allison Coomey, helping the Nittany Lions to an overall record of 34-13-7 and 24-5-5 in College Hockey America.

A Sandy Hook, Connecticut native, Samoskevich scored 54 goals and added 55 assists during her undergraduate career at Quinnipiac, ranking third and fifth, respectively in school history. Her 109 points were the fourth-most in program history. Samoskevich was an ECAC Hockey All-Rookie honoree in 2016 while helping the Bobcats to the ECAC tournament title.

Following her final season at Quinnipiac, Samoskevich was named to the U.S. team for the 2019 IIHF Women's World Championship in Finland, playing in all seven games as the Americans went undefeated to win the gold medal. Samoskevich had two goals during the pool-play round, one each against Finland and Russia.

She also donned the red, white, and blue at a pair of U18 Women's World Championships. In 2014 in Hungary, she had two assists as the U.S. won silver, and in 2015 in Buffalo, the U.S. won gold with Samoskevich scoring six goals including a hat trick against Russia and two goals in a semifinal win over the Czech Republic.

After graduating from Quinnipiac in 2019 with a history degree, Samoskevich began her professional career by playing part of the 2019-20 season professionally in Sweden with Brynäs IF. Later that season, she returned to the U.S. to play first with the PWHPA's New England team and then with her home-state Connecticut Whale in the NWHL/PHF.

### TAYLOR WILLARD



Willard joined the Delaware coaching staff as an assistant coach in 2025 ahead of the program's inaugural season.

Willard came to Newark after spending four seasons as an assistant coach at Norwich University where she coached 27 all-conference selections, two NEHC Rookie of the Year recipients and

Livia Brooks became the first player in program history to win NEHC Player and Rookie of the Year honors in 2023-24. The Cadets were NEHC Championship in 2022-23 to earn a berth in the NCAA Tournament and won consecutive NEHC regular season championships in 2023-24 and 2024-25. Over Willard's four seasons, Norwich either ranked or receiving votes in all but two USCHO Division III Top-15 Women's Polls.

In 2024-25, Willard guided the team's defense that ranked ninth nationally in scoring defense (1.19 goals/game) and second with 11 shutouts. She also led the penalty-killing unit that had a 92.9-percent success rate.

Willard's penalty killers set a program record in 2023-24 by killing 95.3-percent of penalties, which led the entire nation. The scoring defense (0.93) was second in the country, and recorded 10 team shutouts.

Willard began her coaching career as a volunteer assistant coach for two seasons at her alma mater, the University of Vermont, helping lead the Catamounts to back-to-back Hockey East Quarterfinal appearances.

A two-time team captain at Vermont, Willard ranks among the program's top 10 for career games played (145), points (62), assists (41) and power-play goals (12). Her 62 points was the most by a Vermont defenseman.

Willard was a two-time Hockey East Second Team All-Star (2015-16, 2016-17) and an honorable mention all-star in 2017-18. She was named to the New England Hockey Writers Association Division I All-Star (2016-17). Willard also won the 2018 Sarah Devens Award, presented annually to a player who "demonstrates leadership and commitment on and off the ice."

Willard played professionally for the Montreal Canadiens (2018-19) in the Canadian Women's Hockey League. She registered seven points (two goals, five assists) in 26 games. Willard was also a member of Team USA at the 2013 U18 Women's World Championships where she picked up three assists in five games and won a silver medal.

### MICHEL LAROCQUE



Larocque joined the University of Delaware in August 2025 ahead of the program's inaugural season as the team's volunteer goalie coach.

A USA Hockey Level 5 Certified Coach and Gold Level Goaltending Coach, Larocque has run his own goaltender training

company – ML28 Hockey – since 2001. He has worked with goalies of all levels as a regional goalie coach for club and scholastic programs as well as organizing camps, clinics and private lessons across multiple age ranges.

Larocque had a distinguished collegiate career at Boston University where he played 97 career games from 1995 to 1999, helping lead the Terriers to the 1997 Hockey East championship, four-straight Beanpot titles, and three NCAA Tournament appearances including an appearance in the 1997 national championship game where he made 24 saves. Larocque was a two-time All-Hockey East selection and was an All-American in 1999 as well as a Hobey Baker finalist. He also was the 1997 Hockey East Tournament MVP and selected to the 1996 Hockey East All-Rookie Team.

Originally drafted by the San Jose Sharks in the sixth round of the 1996 NHL Draft, Larocque was traded to the Chicago Blackhawks in 1999. He made his NHL debut in 2001 against Philadelphia and played in three games for the Blackhawks.

## SUPPORT STAFF

**Jack Davis**

**Devon Cummings**

**Alex Davisson**

**Dr. Clare Devine**

Sport Administrator

Academic Advisor

Athletic Trainer

Sport Psychologist

**Austin Mark**

**Jake Prettyman**

**Brendan Thomas**

**Kate Winstanley**

Team Nutritionist

Equipment Manager

Athletic Communications

Strength & Conditioning Coach

## UNIVERSITY OF DELAWARE

## IN THE RANKINGS

The University of Delaware is ranked in the top 1.6% globally, among nearly 21,000 institutions, based on educational quality, employability, faculty quality and research. In late 2024, Wall Street Journal ranked UD at No. 10 among public universities and No. 26 among all U.S. universities based on student professional readiness and career outcomes.

**Physical Therapy graduate program**  
No. 1 in the nation  
(U.S. News & World Report)

One of 24 UD graduate programs ranked in the top-100 by U.S. News

**Entrepreneurship undergraduate program**  
No. 3 in the Mid-Atlantic  
(The Princeton Review)

**Chemical Engineering undergraduate program**  
No. 4 in the nation  
(U.S. News & World Report)

One of six UD undergraduate programs ranked in the top-100 by U.S. News

**Chemical Engineering graduate program**  
No. 8 in the nation  
(U.S. News & World Report)

One of 24 UD graduate programs ranked in the top-100 by U.S. News

**Online MBA program**  
No. 20 out of 355 in the nation  
(U.S. News & World Report)

**Online Master's in Education program**  
No. 20 out of 313 in the nation  
(U.S. News & World Report)

**Nursing undergraduate program**  
No. 40 in the nation  
(U.S. News & World Report)  
A 34-spot jump from last year's ranking

## BEST VALUE

UD ranks among the country's best value propositions, according to U.S. News & World Report, Wall Street Journal, Kiplinger's and Forbes. This summer, The Princeton Review ranked UD among its 209 Best Value Colleges for 2025, earning one of the publication's highest return-on-investment ratings. Money magazine awarded UD 4½ stars out of a possible five in its 2025-26 rating of America's best colleges. The University, according to Money, "stands out for its affordability" as a public college providing an excellent value for in-state students, and is considered one of the Best Colleges in the Northeast.

## distinguished history

In 1743, the school that would become the University of Delaware was just a tiny institution, with a graduating class of about a dozen. Three of those graduates – **Thomas McKean**, **George Read** and **James Smith** – would go on to sign the Declaration of Independence; Read would also sign the U.S. Constitution, helping launch a new paradigm of freedom for an entire nation and a beacon of liberty for much of the world.

## first in study abroad

In 1923, UD initiated a program to enhance students' learning by giving them an overseas experience. Influenced by the carnage he saw as an ambulance driver in World War I, professor **Raymond Kirkbride** believed that understanding other cultures was critical to promoting peace. His idea would grow into the first study-abroad program in the United States. Today approximately a third of all UD students participate in study abroad programs offered around the world. This year, the University celebrates the 10-year anniversary of its World Scholars Program, through which a cohort of new students experience their first UD semester abroad. These students return to UD for the spring and, as juniors, they can elect one of 40 study-abroad experiences.

## introducing ud's new leadership

Interim President **Laura Carlson** and Interim Provost **Bill Farquhar** have been at the helm since July 1. Carlson joined the University of Delaware community in 2022, serving as its chief academic officer when she became the University's 12th Provost. Farquhar has been a faculty member for more than 23 years in UD's Department of Kinesiology and Applied Physiology. He most recently served as the dean of UD's College of Health Sciences.

## student applications are climbing

Interest in a University of Delaware education continues to soar. UD received more than 40,000 applications for this year's class of first-year students, setting a UD record for the seventh consecutive year. Over the last year, UD hosted more than 38,000 visitors (prospective students and their families) at open houses and campus tours, and awarded more than \$200 million in financial aid to its newest students.

## incorporating ai into curriculum

AI has the potential to reshape higher education. UD has applied this technology in myriad ways and continues to explore further applications for artificial intelligence – including the launch of new academic offerings like an undergraduate major, a graduate degree program and a certificate; the creation of UD's First State AI Institute; and the incorporation of generative AI into curricula.

## PROMINENT ALUMNI



joe Biden '65



jill Biden '75, '07



chris christie '84



joe flacco '08



elena delle donne '13

# CAREER STATS AND HIGHS

## 1 • MATTIE ROBITZER

G • Jr. • 5-4

Kennett Square, Pa. / Unionville (Northeastern)

### ROBITZER, Mattie

SEASON	TEAM	GP	G	A	Points	Shots	Shot%	Pen-Min	+/-	PPG	SHG	GWG	Bik	FOW	FOL	FO%
2023-24	NE	1	0	0	0	0	.000	0-0	0	0	0	0	0	0	0	.000
2024-25	NE	3	0	0	0	0	.000	0-0	0	0	0	0	0	0	0	.000
2025-26	UD	10	0	0	0	0	.000	0-0	0	0	0	0	0	0	0	.000
<b>TOTAL FOR UD</b>	<b>10</b>	<b>0</b>	<b>0</b>	<b>0</b>	<b>0</b>	<b>0</b>	<b>.000</b>	<b>0-0</b>	<b>0</b>	<b>0</b>	<b>0</b>	<b>0</b>	<b>0</b>	<b>0</b>	<b>0</b>	<b>.000</b>
<b>TOTAL</b>	<b>14</b>	<b>0</b>	<b>0</b>	<b>0</b>	<b>0</b>	<b>0</b>	<b>.000</b>	<b>0-0</b>	<b>0</b>	<b>0</b>	<b>0</b>	<b>0</b>	<b>0</b>	<b>0</b>	<b>0</b>	<b>.000</b>

SEASON	TEAM	GP-GS	Minutes	GA	GAAvg	Saves	Save%	W	L	T	Sho	PPG	SHG
2023-24	NE	1-0	0	0	0	0	.000	0	0	0	0	0	0
2024-25	NE	3-2	151.5	5	1.99	49	.907	1	1	0	0	1	0
2025-26	UD	10-10	560.09	37	3.97	409	.917	0	10	0	0	8	2
<b>TOTAL FOR UD</b>	<b>10-10</b>	<b>560.09</b>	<b>37</b>	<b>3.97</b>	<b>409</b>	<b>.917</b>	<b>0</b>	<b>10</b>	<b>0</b>	<b>0</b>	<b>0</b>	<b>8</b>	<b>2</b>
<b>TOTAL</b>	<b>14-12</b>	<b>711.59</b>	<b>42</b>	<b>3.55</b>	<b>458</b>	<b>.916</b>	<b>1</b>	<b>11</b>	<b>0</b>	<b>0</b>	<b>0</b>	<b>9</b>	<b>2</b>

### Single Game Highs

Statistic	Value
Saves	63 at Mercyhurst 10/31/25

## 2 • LEXIE LONASK

D • Fr. • 5-8

Chandler, Ariz. / Shattuck St. Mary's [Minn.]

### LONASK, Lexie

SEASON	TEAM	GP	G	A	Points	Shots	Shot%	Pen-Min	+/-	PPG	SHG	GWG	Bik	FOW	FOL	FO%
2025-26	UD	17	1	3	4	14	.071	1-2	-10	0	0	0	86	0	0	.000
<b>TOTAL</b>	<b>17</b>	<b>1</b>	<b>3</b>	<b>4</b>	<b>14</b>	<b>.071</b>	<b>1-2</b>	<b>-10</b>	<b>0</b>	<b>0</b>	<b>0</b>	<b>0</b>	<b>86</b>	<b>0</b>	<b>0</b>	<b>.000</b>

### Single Game Highs

Statistic	Value
Points	1 4 times
Goals	1 at Mercyhurst 10/31/25
Assists	1 vs LIU 09/27/25, vs Holy Cross 10/04/25, vs Holy Cross 10/05/25
Shots	2 5 times
Penalties	1 at Mercyhurst 10/31/25
Penalty minutes	2 at Mercyhurst 10/31/25
Plus/minus	1 vs Syracuse 10/17/25, at Mercyhurst 10/31/25

## 3 • MADISON BONAVIDA

F • Fr. • 6-0

Longmeadow, Mass. / Milton Academy

### BONAVIDA, Maddie

SEASON	TEAM	GP	G	A	Points	Shots	Shot%	Pen-Min	+/-	PPG	SHG	GWG	Bik	FOW	FOL	FO%
2025-26	UD	17	0	1	1	9	.000	5-10	-14	0	0	0	13	2	2	.500
<b>TOTAL</b>	<b>17</b>	<b>0</b>	<b>1</b>	<b>1</b>	<b>9</b>	<b>.000</b>	<b>5-10</b>	<b>-14</b>	<b>0</b>	<b>0</b>	<b>0</b>	<b>0</b>	<b>13</b>	<b>2</b>	<b>2</b>	<b>.500</b>

### Single Game Highs

Statistic	Value
Points	1 vs Lindenwood 11/14/25
Assists	1 vs Lindenwood 11/14/25
Shots	2 vs Lindenwood 11/15/25, at RIT 12/05/25
Penalties	1 5 times
Penalty minutes	2 5 times

## 4 • TIANA MCINTYRE

D • Sr. • 5-8

Park City, Utah / Park City (Quinnipiac)

### MCINTYRE, Tiana

SEASON	TEAM	GP	G	A	Points	Shots	Shot%	Pen-Min	+/-	PPG	SHG	GWG	Bik	FOW	FOL	FO%
2022-23	QU	8	0	0	0	0	.000	0-0	0	0	0	0	0	0	0	.000
2023-24	QU	26	0	2	2	13	.000	5-10	6	0	0	0	8	0	0	.000
2024-25	QU	33	0	0	0	21	.000	0-0	0	0	0	0	16	0	0	.000
2025-26	UD	20	2	4	6	14	.143	4-8	-22	0	0	0	28	0	0	.000
<b>TOTAL FOR UD</b>	<b>20</b>	<b>2</b>	<b>4</b>	<b>6</b>	<b>14</b>	<b>.143</b>	<b>4-8</b>	<b>-22</b>	<b>0</b>	<b>0</b>	<b>0</b>	<b>0</b>	<b>28</b>	<b>0</b>	<b>0</b>	<b>.000</b>
<b>TOTAL</b>	<b>87</b>	<b>2</b>	<b>6</b>	<b>8</b>	<b>48</b>	<b>.042</b>	<b>9-18</b>	<b>-16</b>	<b>0</b>	<b>0</b>	<b>0</b>	<b>0</b>	<b>52</b>	<b>0</b>	<b>0</b>	<b>.000</b>

### Single Game Highs

Statistic	Value
Points	1 8 times
Goals	1 at Brown 11/09/25, at RIT 12/05/25
Assists	1 6 times
Shots	4 at RIT 12/05/25
Penalties	3 vs Rensselaer 12/02/23
Penalty minutes	6 vs Rensselaer 12/02/23
Plus/minus	2 at Harvard 01/12/24

## 5 • EMMA MACINTYRE

D • Fr. • 5-4

Halifax, Nova Scotia / Stanstead College

### MACINTYRE, Emma

SEASON	TEAM	GP	G	A	Points	Shots	Shot%	Pen-Min	+/-	PPG	SHG	GWG	Bik	FOW	FOL	FO%
2025-26	UD	17	0	3	3	14	.000	6-12	-23	0	0	0	41	0	0	.000
<b>TOTAL</b>	<b>17</b>	<b>0</b>	<b>3</b>	<b>3</b>	<b>14</b>	<b>.000</b>	<b>6-12</b>	<b>-23</b>	<b>0</b>	<b>0</b>	<b>0</b>	<b>0</b>	<b>41</b>	<b>0</b>	<b>0</b>	<b>.000</b>

### Single Game Highs

Statistic	Value
Points	1 vs Holy Cross 10/05/25, at RIT 12/05/25, at RIT 12/06/25
Assists	1 vs Holy Cross 10/05/25, at RIT 12/05/25, at RIT 12/06/25
Shots	3 at Brown 11/08/25, vs Lindenwood 11/14/25
Penalties	2 vs Penn St. 10/11/25
Penalty minutes	4 vs Penn St. 10/11/25

## 6 • KACEY BLUM

F • Fr. • 5-6

McLean, Va. / McLean

### BLUM, Kacey

SEASON	TEAM	GP	G	A	Points	Shots	Shot%	Pen-Min	+/-	PPG	SHG	GWG	Bik	FOW	FOL	FO%
2025-26	UD	19	1	0	1	15	.067	1-2	-9	0	0	1	6	0	0	.000
<b>TOTAL</b>	<b>19</b>	<b>1</b>	<b>0</b>	<b>1</b>	<b>15</b>	<b>.067</b>	<b>1-2</b>	<b>-9</b>	<b>0</b>	<b>0</b>	<b>0</b>	<b>1</b>	<b>6</b>	<b>0</b>	<b>0</b>	<b>.000</b>

### Single Game Highs

Statistic	Value
Points	1 vs Lindenwood 11/14/25
Goals	1 vs Lindenwood 11/14/25
Shots	2 6 times
Penalties	1 at Brown 11/09/25
Penalty minutes	2 at Brown 11/09/25
Plus/minus	1 at Brown 11/09/25, vs Lindenwood 11/14/25

## 8 • VICTORIA BORG

F • Fr. • 5-4

Burlington, Ontario / Blyth Academy

### BORG, Victoria

SEASON	TEAM	GP	G	A	Points	Shots	Shot%	Pen-Min	+/-	PPG	SHG	GWG	Bik	FOW	FOL	FO%
2025-26	UD	20	1	0	1	16	.063	4-8	-11	0	0	0	11	0	0	.000
<b>TOTAL</b>	<b>20</b>	<b>1</b>	<b>0</b>	<b>1</b>	<b>16</b>	<b>.063</b>	<b>4-8</b>	<b>-11</b>	<b>0</b>	<b>0</b>	<b>0</b>	<b>0</b>	<b>11</b>	<b>0</b>	<b>0</b>	<b>.000</b>

### Single Game Highs

Statistic	Value
Points	1 vs Lindenwood 11/14/25
Goals	1 vs Lindenwood 11/14/25
Shots	2 4 times
Penalties	1 4 times
Penalty minutes	2 4 times
Plus/minus	1 vs Holy Cross 10/05/25, at RIT 12/05/25

## 9 • BAILEY GRAY

D • Fr. • 5-4

Plymouth, Minn. / Benilde-St. Margaret's

### GRAY, Bailey

SEASON	TEAM	GP	G	A	Points	Shots	Shot%	Pen-Min	+/-	PPG	SHG	GWG	Bik	FOW	FOL	FO%
2025-26	UD	19	0	1	1	22	.000	9-29	-18	0	0	0	53	0	0	.000
<b>TOTAL</b>	<b>19</b>	<b>0</b>	<b>1</b>	<b>1</b>	<b>22</b>	<b>.000</b>	<b>9-29</b>	<b>-18</b>	<b>0</b>	<b>0</b>	<b>0</b>	<b>0</b>	<b>53</b>	<b>0</b>	<b>0</b>	<b>.000</b>

### Single Game Highs

Statistic	Value
Points	1 vs Holy Cross 10/05/25
Assists	1 vs Holy Cross 10/05/25
Shots	4 vs LIU 09/27/25
Penalties	2 at Mercyhurst 10/31/25
Penalty minutes	15 at Mercyhurst 10/31/25
Plus/minus	1 vs LIU 09/26/25

# CAREER STATS AND HIGHS

## 10 • DANICA MARK

F • Jr. • 5-7

Duluth, Minn. / Duluth Marshall School (Union)

### MARK, Danica

SEASON	TEAM	GP	G.	A	Points	Shots	Shot%	Pen-Min	+/-	PPG	SHG	GWG	Bik	FOW	FOL	FO%
2023-24	UNI	8	0	0	0	4	.000	1 - 2	0	0	0	0	2	16	19	.457
2024-25	UNI	9	1	2	3	10	.100	2 - 4	1	0	0	0	2	18	20	.474
2025-26	UD	20	1	0	1	15	.067	0 - 0	-17	1	0	0	20	33	63	.344
<b>TOTAL FOR UD</b>	<b>20</b>	<b>1</b>	<b>0</b>	<b>1</b>	<b>15</b>	<b>.067</b>	<b>0 - 0</b>	<b>-17</b>	<b>1</b>	<b>0</b>	<b>0</b>	<b>0</b>	<b>20</b>	<b>33</b>	<b>63</b>	<b>.344</b>
<b>TOTAL</b>	<b>37</b>	<b>2</b>	<b>2</b>	<b>4</b>	<b>29</b>	<b>.069</b>	<b>3 - 6</b>	<b>-16</b>	<b>1</b>	<b>0</b>	<b>0</b>	<b>0</b>	<b>24</b>	<b>67</b>	<b>102</b>	<b>.396</b>

### Single Game Highs

Statistic	Value
Points	1 4 times
Goals	1 vs Princeton 01/04/25, at RIT 12/06/25
Assists	1 vs RIT 10/04/24, vs RIT 10/05/24
Shots	4 vs RIT 10/04/24
Power-play Goals	1 at RIT 12/06/25
Penalties	1 vs Holy Cross 10/07/23, at Robert Morris 09/27/24, at Vermont 11/20/24
Penalty minutes	2 vs Holy Cross 10/07/23, at Robert Morris 09/27/24, at Vermont 11/20/24
Plus/minus	1 5 times

## 11 • CHARLIE VOGEL

F • Fr. • 5-6

Sun Prairie, Wisc. / St. Paul's School

### VOGEL, Charlie

SEASON	TEAM	GP	G.	A	Points	Shots	Shot%	Pen-Min	+/-	PPG	SHG	GWG	Bik	FOW	FOL	FO%
2025-26	UD	20	0	0	0	10	.000	3 - 6	-8	0	0	0	3	0	2	.000
<b>TOTAL</b>	<b>20</b>	<b>0</b>	<b>0</b>	<b>0</b>	<b>10</b>	<b>.000</b>	<b>3 - 6</b>	<b>-8</b>	<b>0</b>	<b>0</b>	<b>0</b>	<b>0</b>	<b>3</b>	<b>0</b>	<b>2</b>	<b>.000</b>

### Single Game Highs

Statistic	Value
Shots	2 vs Lindenwood 11/14/25, at Union (NY) 11/29/25
Penalties	1 vs Holy Cross 10/04/25, vs Robert Morris 10/25/25, at Mercyhurst 10/31/25
Penalty minutes	2 vs Holy Cross 10/04/25, vs Robert Morris 10/25/25, at Mercyhurst 10/31/25
Plus/minus	1 vs LIU 09/27/25, vs Holy Cross 10/05/25

## 13 • KAITLIN FINNEGAN

F • Gr. • 5-4

Tecumseh, Kan. / Kansas Connections Academy (Lindenwood)

### FINNEGAN, Kaitlin

SEASON	TEAM	GP	G.	A	Points	Shots	Shot%	Pen-Min	+/-	PPG	SHG	GWG	Bik	FOW	FOL	FO%
2020-21	Linden	14	0	1	1	9	.000	5 - 10	-3	0	0	0	5	12	34	.261
2021-22	Linden	26	1	5	6	28	.036	1 - 2	-22	0	0	0	8	77	112	.407
2022-23	Linden	32	3	2	5	48	.063	3 - 6	-15	0	0	0	25	20	31	.392
2023-24	Linden	31	3	8	11	42	.071	8 - 16	-15	1	0	0	17	3	9	.250
2024-25	Linden	4	0	0	0	0	.000	2 - 4	-3	0	0	0	1	1	0	1.000
2025-26	UD	20	5	3	8	36	.139	1 - 2	-2	0	1	0	46	13	17	.433
<b>TOTAL FOR UD</b>	<b>20</b>	<b>5</b>	<b>3</b>	<b>8</b>	<b>36</b>	<b>.139</b>	<b>1 - 2</b>	<b>-2</b>	<b>0</b>	<b>1</b>	<b>0</b>	<b>0</b>	<b>46</b>	<b>13</b>	<b>17</b>	<b>.433</b>
<b>TOTAL</b>	<b>127</b>	<b>12</b>	<b>19</b>	<b>31</b>	<b>163</b>	<b>.074</b>	<b>20 - 40</b>	<b>-60</b>	<b>1</b>	<b>1</b>	<b>0</b>	<b>0</b>	<b>102</b>	<b>126</b>	<b>203</b>	<b>.383</b>

### Single Game Highs

Statistic	Value
Points	2 5 times
Goals	2 vs Lindenwood 11/14/25
Assists	2 at Brown 11/09/25, vs Mercyhurst 12/01/23
Shots	6 vs LIU 09/26/25
Power-play Goals	1 vs Robert Morris 02/17/24
Short-Handed Goals	1 vs Lindenwood 11/14/25
Penalties	2 vs Stonehill 11/25/23, at RIT 01/11/21, vs St. Cloud St. 09/21/24
Penalty minutes	4 vs Stonehill 11/25/23, at RIT 01/11/21, vs St. Cloud St. 09/21/24
Plus/minus	3 at RIT 10/27/23

## 15 • WREN ABOUD

F • Fr. • 5-2

Weymouth, Mass. / Thayer Academy

### ABOUD, Wren

SEASON	TEAM	GP	G.	A	Points	Shots	Shot%	Pen-Min	+/-	PPG	SHG	GWG	Bik	FOW	FOL	FO%
2025-26	UD	20	0	1	1	10	.000	9 - 18	-16	0	0	0	12	63	71	.470
<b>TOTAL</b>	<b>20</b>	<b>0</b>	<b>1</b>	<b>1</b>	<b>10</b>	<b>.000</b>	<b>9 - 18</b>	<b>-16</b>	<b>0</b>	<b>0</b>	<b>0</b>	<b>0</b>	<b>12</b>	<b>63</b>	<b>71</b>	<b>.470</b>

### Single Game Highs

Statistic	Value
Points	1 at RIT 12/06/25
Assists	1 at RIT 12/06/25
Shots	2 at Mercyhurst 10/31/25, at RIT 12/05/25
Penalties	2 vs Lindenwood 11/15/25

## 16 • EVA MAYO

F/D • Fr. • 5-6

Honeoye Falls, N.Y. / Kent School

### MAYO, Eva

SEASON	TEAM	GP	G.	A	Points	Shots	Shot%	Pen-Min	+/-	PPG	SHG	GWG	Bik	FOW	FOL	FO%
2025-26	UD	20	0	2	2	10	.000	6 - 12	-9	0	0	0	25	0	0	.000
<b>TOTAL</b>	<b>20</b>	<b>0</b>	<b>2</b>	<b>2</b>	<b>10</b>	<b>.000</b>	<b>6 - 12</b>	<b>-9</b>	<b>0</b>	<b>0</b>	<b>0</b>	<b>0</b>	<b>25</b>	<b>0</b>	<b>0</b>	<b>.000</b>

### Single Game Highs

Statistic	Value
Points	1 vs Lindenwood 11/14/25, at RIT 12/06/25
Assists	1 vs Lindenwood 11/14/25, at RIT 12/06/25
Shots	2 at Brown 11/08/25
Penalties	1 6 times
Penalty minutes	2 6 times
Plus/minus	1 4 times

## 17 • SUVINA HEIDT

D • Fr. • 5-6

Aurora, Colo. / Winchendon School [Mass.]

### HEIDT, Suvina

SEASON	TEAM	GP	G.	A	Points	Shots	Shot%	Pen-Min	+/-	PPG	SHG	GWG	Bik	FOW	FOL	FO%
2025-26	UD	17	0	0	0	4	.000	3 - 6	-12	0	0	0	18	0	0	.000
<b>TOTAL</b>	<b>17</b>	<b>0</b>	<b>0</b>	<b>0</b>	<b>4</b>	<b>.000</b>	<b>3 - 6</b>	<b>-12</b>	<b>0</b>	<b>0</b>	<b>0</b>	<b>0</b>	<b>18</b>	<b>0</b>	<b>0</b>	<b>.000</b>

### Single Game Highs

Statistic	Value
Shots	1 4 times
Penalties	2 vs Syracuse 10/18/25
Penalty minutes	4 vs Syracuse 10/18/25
Plus/minus	1 at Mercyhurst 10/31/25, at RIT 12/05/25, vs Lindenwood 11/14/25

## 18 • FRANCESCA BARRESI

F • Fr. • 5-6

Ottawa, Ontario / St. Joseph Catholic

### BARRESI, Francesca

SEASON	TEAM	GP	G.	A	Points	Shots	Shot%	Pen-Min	+/-	PPG	SHG	GWG	Bik	FOW	FOL	FO%
2025-26	UD	20	1	2	3	38	.026	4 - 8	-21	0	0	0	32	114	137	.454
<b>TOTAL</b>	<b>20</b>	<b>1</b>	<b>2</b>	<b>3</b>	<b>38</b>	<b>.026</b>	<b>4 - 8</b>	<b>-21</b>	<b>0</b>	<b>0</b>	<b>0</b>	<b>0</b>	<b>32</b>	<b>114</b>	<b>137</b>	<b>.454</b>

### Single Game Highs

Statistic	Value
Points	1 at RIT 12/05/25, vs LIU 09/26/25, vs Lindenwood 11/14/25
Goals	1 vs LIU 09/26/25
Assists	1 vs Lindenwood 11/14/25, at RIT 12/05/25
Shots	4 vs Lindenwood 11/15/25, at Union (NY) 11/29/25, at RIT 12/06/25
Penalties	2 at Union (NY) 11/28/25
Penalty minutes	4 at Union (NY) 11/28/25
Plus/minus	2 vs Lindenwood 11/14/25

## 19 • KATELYNN CHARLTON

F • Fr. • 5-7

Brampton, Ontario / St. Martins Catholic Secondary

### CHARLTON, Katelynn

SEASON	TEAM	GP	G.	A	Points	Shots	Shot%	Pen-Min	+/-	PPG	SHG	GWG	Bik	FOW	FOL	FO%
2025-26	UD	20	4	3	7	69	.058	3 - 6	-12	1	0	1	12	1	1	.500
<b>TOTAL</b>	<b>20</b>	<b>4</b>	<b>3</b>	<b>7</b>	<b>69</b>	<b>.058</b>	<b>3 - 6</b>	<b>-12</b>	<b>1</b>	<b>0</b>	<b>1</b>	<b>12</b>	<b>1</b>	<b>1</b>	<b>.500</b>	

### Single Game Highs

Statistic	Value
Points	2 vs Holy Cross 10/04/25
Goals	2 vs Holy Cross 10/04/25
Assists	1 vs Syracuse 10/17/25, vs Lindenwood 11/14/25, vs LIU 09/27/25
Shots	8 at Brown 11/08/25
Power-play Goals	1 vs Holy Cross 10/05/25
Penalties	1 at Brown 11/09/25, vs Penn St. 10/11/25, vs Robert Morris 10/25/25
Penalty minutes	2 at Brown 11/09/25, vs Penn St. 10/11/25, vs Robert Morris 10/25/25
Plus/minus	1 at Mercyhurst 10/31/25, vs Lindenwood 11/14/25



# CAREER STATS AND HIGHS

## 20 • MEERA SMITH

F • Fr. • 5-6

Victoria, British Columbia / Shawnigan Lake School

## SMITH, Meera

SEASON	TEAM	GP	G.	A	Points	Shots	Shot%	Pen-Min	+/-	PPG	SHG	GWG	Bik	FOW	FOL	FO%
2025-26	UD	20	3	2	5	15	.200	4 - 8	-13	1	0	0	19	150	224	.401
<b>TOTAL</b>		<b>20</b>	<b>3</b>	<b>2</b>	<b>5</b>	<b>15</b>	<b>.200</b>	<b>4 - 8</b>	<b>-13</b>	<b>1</b>	<b>0</b>	<b>0</b>	<b>19</b>	<b>150</b>	<b>224</b>	<b>.401</b>

## Single Game Highs

Statistic	Value
Points	2 vs Lindenwood 11/14/25
Goals	1 vs Holy Cross 10/05/25, vs Lindenwood 11/14/25, at RIT 12/06/25
Assists	1 at Mercyhurst 10/31/25, vs Lindenwood 11/14/25
Shots	2 4 times
Power-play Goals	1 at RIT 12/06/25
Penalties	2 at Mercyhurst 11/01/25
Penalty minutes	4 at Mercyhurst 11/01/25
Plus/minus	1 at Brown 11/09/25, at RIT 12/06/25

## 21 • BILLI ROMAN

F • Fr. • 5-3

Hockessin, Del. / The Tatnall School

## ROMAN, Billi

SEASON	TEAM	GP	G.	A	Points	Shots	Shot%	Pen-Min	+/-	PPG	SHG	GWG	Bik	FOW	FOL	FO%
2025-26	UD	20	2	0	2	10	.200	2 - 4	-5	0	0	0	11	26	80	.245
<b>TOTAL</b>		<b>20</b>	<b>2</b>	<b>0</b>	<b>2</b>	<b>10</b>	<b>.200</b>	<b>2 - 4</b>	<b>-5</b>	<b>0</b>	<b>0</b>	<b>0</b>	<b>11</b>	<b>26</b>	<b>80</b>	<b>.245</b>

## Single Game Highs

Statistic	Value
Points	1 vs LIU 09/27/25, at Mercyhurst 10/31/25
Goals	1 vs LIU 09/27/25, at Mercyhurst 10/31/25
Shots	3 vs LIU 09/27/25
Penalties	1 vs Penn St. 10/11/25, at Brown 11/08/25
Penalty minutes	2 vs Penn St. 10/11/25, at Brown 11/08/25
Plus/minus	1 4 times

## 24 • TAYLOR SCHOOLEY

D • Gr. • 5-6

Moon Township, Pa. / Moon Area

## SCHOOLEY, Taylor

SEASON	TEAM	GP	G.	A	Points	Shots	Shot%	Pen-Min	+/-	PPG	SHG	GWG	Bik	FOW	FOL	FO%
2025-26	UD	17	0	1	1	0	.000	4 - 8	-10	0	0	0	16	0	0	.000
<b>TOTAL</b>		<b>17</b>	<b>0</b>	<b>1</b>	<b>1</b>	<b>0</b>	<b>.000</b>	<b>4 - 8</b>	<b>-10</b>	<b>0</b>	<b>0</b>	<b>0</b>	<b>16</b>	<b>0</b>	<b>0</b>	<b>.000</b>

## Single Game Highs

Statistic	Value
Points	1 at Brown 11/09/25
Assists	1 at Brown 11/09/25
Penalties	1 4 times
Penalty minutes	2 4 times
Plus/minus	1 at Brown 11/09/25, vs Lindenwood 11/14/25

## 27 • IDA HAAVE

F • Fr. • 5-6

Kristiansand, Norway / Norges Toppidrettsgymnas Lillehammer

## HAAVE, Ida

SEASON	TEAM	GP	G.	A	Points	Shots	Shot%	Pen-Min	+/-	PPG	SHG	GWG	Bik	FOW	FOL	FO%
2025-26	UD	20	0	1	1	13	.000	1 - 2	-12	0	0	0	28	85	120	.415
<b>TOTAL</b>		<b>20</b>	<b>0</b>	<b>1</b>	<b>1</b>	<b>13</b>	<b>.000</b>	<b>1 - 2</b>	<b>-12</b>	<b>0</b>	<b>0</b>	<b>0</b>	<b>28</b>	<b>85</b>	<b>120</b>	<b>.415</b>

## Single Game Highs

Statistic	Value
Points	1 at Mercyhurst 10/31/25
Assists	1 at Mercyhurst 10/31/25
Shots	3 vs LIU 09/27/25, vs LIU 09/26/25
Penalties	1 vs Robert Morris 10/24/25
Penalty minutes	2 vs Robert Morris 10/24/25
Plus/minus	2 vs Lindenwood 11/14/25

## 31 • CHARLOTTE PAYNE

G • Fr. • 5-8

Oakville, Ontario / Abbey Park

## PAYNE, Charlotte

SEASON	TEAM	GP	G.	A	Points	Shots	Shot%	Pen-Min	+/-	PPG	SHG	GWG	Bik	FOW	FOL	FO%
2025-26	UD	11	0	0	0	0	.000	0 - 0	0	0	0	0	0	0	0	.000
<b>TOTAL</b>		<b>11</b>	<b>0</b>	<b>0</b>	<b>0</b>	<b>0</b>	<b>.000</b>	<b>0 - 0</b>	<b>0</b>	<b>0</b>	<b>0</b>	<b>0</b>	<b>0</b>	<b>0</b>	<b>0</b>	<b>.000</b>

SEASON	TEAM	GP-GS	Minutes	GA	GAAvg	Saves	Save%	W	L	T	Sho	PPG	SHG
2025-26	UD	11 - 10	644.57	40	3.73	439	.916	2	8	0	0	4	2
<b>TOTAL</b>		<b>11 - 10</b>	<b>644.57</b>	<b>40</b>	<b>3.73</b>	<b>439</b>	<b>.916</b>	<b>2</b>	<b>8</b>	<b>0</b>	<b>0</b>	<b>4</b>	<b>2</b>

## Single Game Highs

Statistic	Value
Saves	51 vs Penn St. 10/10/25, at Brown 11/09/25

delaware

**STARTERS BY GAME**

	<b>LEFT WING</b>	<b>CENTER</b>	<b>RIGHT WING</b>	<b>LEFT DEFENSE</b>	<b>RIGHT DEFENSE</b>	<b>GOALIE</b>
LIU	Charlton	Haave	Finnegan	McIntyre	MacIntyre	Robitzer
LIU	Borg	Smith	Barresi	McIntyre	MacIntyre	Payne
Holy Cross	Charlton	Haave	Finnegan	Gray	Lonask	Robitzer
Holy Cross	Borg	Smith	Barresi	McIntyre	Lonask	Payne
Penn State	Charlton	Haave	Finnegan	McIntyre	Lonask	Payne
Penn State	Charlton	Haave	Finnegan	Gray	MacIntyre	Robitzer
Syracuse	Charlton	Haave	Finnegan	McIntyre	Lonask	Payne
Syracuse	Charlton	Haave	Finnegan	McIntyre	Lonask	Robitzer
Robert Morris	Charlton	Barresi	Finnegan	McIntyre	Lonask	Payne
Robert Morris	Borg	Smith	Haave	McIntyre	Lonask	Robitzer
@ Mercyhurst	Charlton	Barresi	Finnegan	McIntyre	Lonask	Robitzer
@ Mercyhurst	Borg	Smith	Haave	McIntyre	Lonask	Payne
@ Brown	Charlton	Barresi	Finnegan	McIntyre	Lonask	Robitzer
@ Brown	Borg	Smith	Voge	McIntyre	Lonask	Payne
Lindenwood	Charlton	Barresi	Finnegan	McIntyre	Lonask	Payne
Lindenwood	Charlton	Barresi	Finnegan	McIntyre	Lonask	Robitzer
@ Union	Haave	Abboud	Mark	McIntyre	Lonask	Payne
@ Union	Borg	Smith	Voge	Gray	MacIntyre	Robitzer
@ RIT	Charlton	Barresi	Finnegan	McIntyre	Mayo	Payne
@ RIT	Haave	Abboud	Mark	McIntyre	MacIntyre	Robitzer

@ Syracuse

@ Syracuse

RIT

RIT

@ Lindenwood

@ Lindenwood

@ Penn State

@ Penn State

Mercyhurst

Mercyhurst

@ Robert Morris

@ Robert Morris

delaware

# GAME-BY-GAME STATISTICAL LEADERS

OPP	GOALS	ASSISTS	SOG	BLOCKS	FO WINS	SAVES
LIU	Barresi (1)	--	Finnegan (6)	7 players (2)	Haave (15)	Robitzer (27)
LIU	Finnegan/Roman (1)	Charlton/Lonask/McIntyre (1)	Charlton (7)	Lonask/MacIntyre (2)	Smith (12)	Payne (22)
Holy Cross	Charlton (2)	Finnegan/Lonask (1)	Charlton (3)	Finnegan/Lonask (5)	Haave (11)	Robitzer (57)
Holy Cross	Smith/Charlton (1)	MacIntyre/Gray/Lonask (1)	Barresi/Charlton/Roman (2)	MacIntyre (5)	Haave (11)	Payne (49)
Penn State	--	--	10 players (1)	Lonask/Gray/Barresi (4)	Haave (13)	Payne (51)
Penn State	--	--	Charlton (1)	Lonask/Barresi (5)	Smith (12)	Robitzer (62)
Syracuse	Finnegan (1)	Charlton (1)	Gray (3)	Gray (4)	Smith (9)	Payne (48)
Syracuse	--	--	Mark/Barresi (3)	Lonask (6)	Smith/Haave (6)	Robitzer (30)
Robert Morris	--	--	Barresi (3)	Lonask (4)	Barresi (12)	Payne (38)
Robert Morris	--	--	Charlton (6)	Gray (3)	Barresi (13)	Robitzer (43)
@ Mercyhurst	Roman/Lonask (1)	Haave/Smith/McIntyre (1)	Charlton (3)	Lonask (10)	Barresi (13)	Robitzer (63)
@ Mercyhurst	--	--	Finnegan/Barresi (3)	Lonask (9)	Abboud (4)	Payne (50)
@ Brown	--	--	Charlton (8)	Gray (5)	Barresi (8)	Robitzer (34)
@ Brown	McIntyre/Charlton (1)	Finnegan (2)	Charlton (4)	Lonask (11)	Barresi (8)	Payne (51)
Lindenwood	Finnegan (2)	6 players (1)	Finnegan (4)	Lonask (8)	Smith (11)	Payne (32)
Lindenwood	--	--	Charlton (5)	Lonask (4)	Barresi (13)	Payne (24)
@ Union	--	--	Charlton (4)	Lonask/Bonavita/MacIntyre (3)	Smith (9)	Payne (33)
@ Union	--	--	Barresi (4)	Abboud/Smith (3)	Smith (9)	Robitzer (36)
@ RIT	Finnegan/McIntyre (1)	Barresi/MacIntyre (1)	McIntyre (4)	McIntyre/Gray (5)	Barresi (7)	Payne (41)
@ RIT	Smith/Mark (1)	4 players (1)	Barresi (4)	4 players (3)	Abboud (11)	Robitzer (46)

@ Syracuse

@ Syracuse

RIT

RIT

@ Lindenwood

@ Lindenwood

@ Penn State

@ Penn State

Mercyhurst

Mercyhurst

@ Robert Morris

@ Robert Morris

delaware

# SCORING PLAYS

DATE	OPPONENT	Goal Type	GOAL SCORER	ASSIST(S)	TIME & PERIOD	SCORE
9/26/25	LIU	Even	Barresi (1)	--	12:04, 3rd period	2-1, LIU
9/27/25	LIU	Even	Finnegan (1)	Charlton (1)	9:53, 1st period	1-0, UD
9/27/25	LIU	Even	Roman (1)	Lonask (1), McIntyre (1)	10:31, 2nd period	2-0, UD
10/4/25	Holy Cross	Even	Charlton (1)	Finnegan (1)	7:52, 2nd period	1-0, UD
10/4/25	Holy Cross	Even	Charlton (2)	Lonask (2)	17:44, 2nd period	2-1, UD
10/5/25	Holy Cross	Even	Smith (1)	MacIntyre (1)	5:52, 2nd period	1-1
10/5/25	Holy Cross	Power Play	Charlton (3)	Gray (1), Lonask (3)	9:49, 2nd period	2-1, UD
10/17/25	Syracuse	Even	Finnegan (2)	Charlton (2)	11:42, 2nd period	1-1
10/31/25	@RV/RV Mercyhurst	Even	Roman (2)	Haave (1)	11:03, 2nd period	1-1
10/31/25	@RV/RV Mercyhurst	6-5	Lonask (1)	Smiith (1), McIntyre (2)	19:57, 3rd period	2-2
11/9/25	@15/15 Brown	Even	McIntyre (1)	Finnegan (2)	5:31, 2nd period	2-1, Brown
11/9/25	@15/15 Brown	Even	Charlton (4)	Finnegan (3), Schooley (1)	15:05, 2nd period	2-2
11/14/25	Lindenwood	Even	Finnegan (3)	Barresi (1), Charlton (3)	7:30, 1st period	1-0, UD
11/14/25	Lindenwood	Shorthanded	Finnegan (4)	--	19:59, 1st period	2-0, UD
11/14/25	Lindenwood	Even	Borg (1)	Smith (2), McIntyre (3)	19:21, 2nd period	3-1, UD
11/14/25	Lindenwood	Even	Blum (1)	Bonavita (1), Mayo (1)	2:38, 3rd period	4-2, UD
11/14/25	Lindenwood	Empty Net	Smith (2)	--	19:55, 3rd period	5-3, UD
12/5/25	@RIT	Even	Finnegan (5)	Barresi (2), MacIntyre (2)	3:01, 1st period	1-0, UD
12/5/25	@RIT	Even	McIntyre (2)	--	1:32, 2nd period	2-0, UD
12/6/25	@RIT	Power Play	Smith (3)	Mayo (1), MacIntyre (3)	5:48, 3rd period	3-1, RIT
12/6/25	@RIT	Power Play	Mark (1)	McIntyre (4), Abboud (1)	12:06, 3rd period	4-2, RIT





# delaware SEASON STATS



## 2025-26 Delaware Women's Ice Hockey Combined Team Statistics All games

Page 1/1  
as of Dec 16, 2025

### Team Results

Date	Opponent	Score	Att.
09/26/2025	LIU	L 1-4	752
09/27/2025	LIU	L 2-5	336
10/04/2025	Holy Cross	L 2-5	363
10/05/2025	Holy Cross	W 2-1	246
* 10/10/2025	Penn St.	L 0-5	373
* 10/11/2025	Penn St.	L 0-7	350
* 10/17/2025	Syracuse	Lot 1-2	292
* 10/18/2025	Syracuse	L 0-1	236
* 10/24/2025	Robert Morris	L 0-5	247
* 10/25/2025	Robert Morris	L 0-5	296
* 10/31/2025	at Mercyhurst	Lot 2-3	376
* 11/01/2025	at Mercyhurst	L 0-4	245
11/08/2025	at Brown	L 0-3	387
11/09/2025	at Brown	Lot 2-3	211
* 11/14/2025	Lindenwood	W 5-3	282
* 11/15/2025	Lindenwood	L 0-5	260
11/28/2025	at Union (NY)	L 0-7	289
11/29/2025	at Union (NY)	L 0-3	234
* 12/05/2025	at RIT	L 2-5	470
* 12/06/2025	at RIT	L 2-4	677

### Team Statistics

	UD	OPP
<b>SHOT STATISTICS</b>		
Goals-Shot attempts	21-334	80-928
Shot pct.	.063	.086
Goals/Game	1.05	4.00
Shots/Game	16.70	46.40
<b>POWER PLAYS</b>		
Goals-Power Plays	3-74	12-62
Conversion pct.	.041	.194
Shot Attempts	79	137
Shot pct.	.038	.088
<b>SHORT-HANDED</b>		
Goals-Shot attempts	1-4	4-24
Shot pct.	.250	.167
<b>GOAL BREAKDOWN</b>		
Power Play	3	12
Short-handed	1	4
Empty net	1	3
Penalty	0	0
Unassisted	4	14
Overtime	0	3
Delayed Penalty	0	0
Game winning	2	18
First Goal	4	16
Game Tying Goal	0	0
Extra Attacker	1	0
<b>BLOCKS</b>		
Blocks	480	140
Blocks/Game	24.00	7.00
<b>PENALTIES</b>		
Number	70	82
Minutes	151	186
Penalties/Game	3.50	4.10
Pen minutes/Game	7.55	9.30
<b>FACEOFFS (W-L)</b>		
Faceoff W-L	487-717	717-487
Faceoff W-L pct.	.404	.596
<b>SHOOTOUTS (Made-Att)</b>		
	0-0	0-0

### Game Records

Record	Overall	Home	Away	Neutral
ALL GAMES	2-18-0	2-10-0	0-8-0	0-0-0
CONFERENCE	1-11-0	1-7-0	0-4-0	0-0-0
NON-CONFERENCE	1-7-0	1-3-0	0-4-0	0-0-0

#	Player	GP	Shots			SH%	Penalties		PP	SH	BLK	Faceoffs		
			G	A	PTS		PEN-MIN	GOALS				FOW	FOL	FO%
13	Finnegan, Kaitlin	20	5	3	8	.139	1-2	0	1	46	13	17	.433	
19	Charlton, Katelynn	20	4	3	7	.058	3-6	1	0	12	1	1	.500	
4	McIntyre, Tiana	20	2	4	6	.143	4-8	0	0	28	0	0	.000	
20	Smith, Meera	20	3	2	5	.200	4-8	1	0	19	150	224	.401	
2	Lonask, Lexie	17	1	3	4	.071	1-2	0	0	86	0	0	.000	
18	Barresi, Francesca	20	1	2	3	.026	4-8	0	0	32	114	137	.454	
5	MacIntyre, Emma	17	0	3	3	.000	6-12	0	0	41	0	0	.000	
21	Roman, Billi	20	2	0	2	.200	2-4	0	0	11	26	80	.245	
16	Mayo, Eva	20	0	2	2	.000	6-12	0	0	25	0	0	.000	
8	Borg, Victoria	20	1	0	1	.063	4-8	0	0	11	0	0	.000	
10	Mark, Danica	20	1	0	1	.067	0-0	1	0	20	33	63	.344	
6	Blum, Kacey	19	1	0	1	.067	1-2	0	0	6	0	0	.000	
9	Gray, Bailey	19	0	1	1	.222	9-29	0	0	53	0	0	.000	
27	Haave, Ida	20	0	1	1	.000	1-2	0	0	28	85	120	.415	
15	Abboud, Wren	20	0	1	1	.000	9-18	0	0	12	63	71	.470	
3	Bonavita, Maddie	17	0	1	1	.000	5-10	0	0	13	2	2	.500	
24	Schooley, Taylor	17	0	1	1	.000	4-8	0	0	16	0	0	.000	
11	Voge, Charlotte	20	0	0	0	.000	3-6	0	0	3	0	2	.000	
17	Heidt, Suvina	17	0	0	0	.000	3-6	0	0	18	0	0	.000	
31	Payne, Charlotte	11	0	0	0	.000	0-0	0	0	0	0	0	.000	
1	Robitzer, Mattie	10	0	0	0	.000	0-0	0	0	0	0	0	.000	
TM	TEAM	20	0	0	0	.000	0-0	0	0	0	0	0	.000	
<b>Totals</b>		<b>20</b>	<b>21</b>	<b>27</b>	<b>48</b>	<b>334</b>	<b>.063</b>	<b>70-151</b>	<b>3</b>	<b>1</b>	<b>480</b>	<b>487</b>	<b>717</b>	<b>.404</b>
<b>Opponents</b>		<b>20</b>	<b>80</b>	<b>115</b>	<b>195</b>	<b>928</b>	<b>.086</b>	<b>82-186</b>	<b>12</b>	<b>4</b>	<b>140</b>	<b>717</b>	<b>487</b>	<b>.596</b>

#	Player	GP	MIN	GA	GA AVG	SAVES	SAVES%	W-L-T-SHO
31	Payne, Charlotte	11	644:34	40	3.72	439	.916	2-8-0-0
1	Robitzer, Mattie	10	560:05	37	3.96	409	.917	0-10-0-0
TM	EMPTY NET	-	05:09	3	34.95	0	.000	0-0-0-0
<b>Totals</b>		<b>20</b>	<b>1209:48</b>	<b>80</b>	<b>3.97</b>	<b>848</b>	<b>.914</b>	<b>2-18-0-0</b>
<b>Opponents</b>		<b>20</b>	<b>1209:48</b>	<b>21</b>	<b>1.04</b>	<b>313</b>	<b>.937</b>	<b>18-2-0-10</b>

### Attendance Summary

	UD	Opponents
Total	4033	2889
Dates/Avg Per Date	12 / 336	8 / 361
Neutral Site #/Avg	0 / 0	

### Goals by Periods

Team	1st	2nd	3rd	OT	TOTAL
UD	4	11	6	0	21
Opponents	16	30	31	3	80

### Shots by Periods

Team	1st	2nd	3rd	OT	TOTAL
UD	116	96	118	4	334
Opponents	286	324	310	8	928

### Saves by Periods

Team	1st	2nd	3rd	OT	TOTAL
UD	270	294	279	5	848
Opponents	112	85	112	4	313

# delaware NCAA RANKINGS

Statistic	National Rank	Conference Rank	Value	National Leader	Value	Conference Leader	Value
Assists (45 ranked)	44	7	27	Wisconsin	200	Penn St.	137
Goals (45 ranked)	44	7	21	Wisconsin	115	Penn St.	89
Penalty Killing Pct. (45 ranked)	27	4	0.806	Holy Cross	0.933	Penn St.	0.857
Power Play Goals (45 ranked)	43	7	3	RIT	27	RIT	27
Power-Play Percentage (45 ranked)	45	7	0.041	Cornell	0.345	RIT	0.342
Scoring Defense (45 ranked)	43	7	4.00	Penn St.	1.11	Penn St.	1.11
Scoring Margin (45 ranked)	44	7	-2.95	Wisconsin	4.45	Penn St.	3.83
Scoring Offense (45 ranked)	44	7	1.05	Wisconsin	5.75	Penn St.	4.94
Short-Handed Goals (15 ranked)	15	4	1	Penn St.	7	Penn St.	7
Team Assists (0 ranked)							
Team Faceoff win percentage (45 ranked)	44	7	0.404	Penn St.	0.621	Penn St.	0.621
Team Goals Against Average (30 ranked)				Penn St.	1.111	Penn St.	1.111
Team Penalty Minutes Per Game (45 ranked)	24	6	7.55	Ohio St.	14.17	Robert Morris	10.21
Team Points (45 ranked)	44	7	48	Wisconsin	315	Penn St.	226
Team Saves (45 ranked)	1	1	848	Delaware	848	Delaware	848
Team Shutouts (36 ranked)				Penn St. Wisconsin	8 8	Penn St.	8
Tm. Short-Handed Goals (0 ranked)							
Winning Percentage (45 ranked)	44	7	0.100	Penn St.	0.944	Penn St.	0.944

# delaware NCAA RANKINGS

Statistic	Player	National Rank	Conference Rank	Value	National Leader	Value	Conference Leader	Value
Assists per Game (46 ranked)					Caroline Harvey, Wisconsin	1.50	Tessa Janecke, Penn St.	1.00
Faceoff wins (245 ranked)	Meera Smith Francesca Barresi Ida Haave Wren Abboud Danica Mark Billi Roman Kaitlin Finnegan	56 81 116 145 190 202 238	10 14 21 26 35 38 42	150 114 85 63 33 26 13	Jessica MacKinnon, Robert Morris	321	Jessica MacKinnon, Robert Morris	321
Game Winning Goals (25 ranked)					Katelyn Roberts, Penn St.	6	Katelyn Roberts, Penn St.	6
Goalie Winning Pct. (21 ranked)					Katie DeSa, Penn St.	0.938	Katie DeSa, Penn St.	0.938
Goals Against Average (25 ranked)					Katie DeSa, Penn St.	1.175	Katie DeSa, Penn St.	1.175
Goals per Game (48 ranked)					Abbey Murphy, Minnesota	1.11	Grace Outwater, Penn St.	0.72
Penalties (78 ranked)	Wren Abboud Bailey Gray	32 32	8 8	9 9	Kendal Davidson, Rensselaer Charlotte Hallett, Syracuse Abbey Murphy, Minnesota	17 17 17	Charlotte Hallett, Syracuse	17
Points per Game (49 ranked)					Caroline Harvey, Wisconsin	2.05	Tessa Janecke, Penn St.	1.69
Power Play Goals (23 ranked)					5 players tied	5	Emma Pickering, RIT	5
Save Percentage (59 ranked)	Mattie Robitzer Charlotte Payne	36 37	7 8	0.917 0.916	Tia Chan, UConn	0.949	Maggie Hatch, Robert Morris	0.933
Short-Handed Goals (5 ranked)	Kaitlin Finnegan	5	3	1	Brooklyn Schneiderhan, Saint Anselm	3	Maddy Christian, Penn St. Grace Outwater, Penn St.	2 2
Shutouts (11 ranked)					Katie DeSa, Penn St. Felicia Frank, Quinnipiac Ava McNaughton, Wisconsin	6 6 6	Katie DeSa, Penn St.	6

# delaware TV ROSTER



**1**  
**MATTIE ROBITZER**  
Jr.  
G | 5-4  
Kennett Square, Pa.  
Unionville  
(Northeastern)  
@m.robitzer



**2**  
**LEXIE LONASK**  
Fr.  
D | 5-8  
Chandler, Ariz.  
Shattuck St. Mary's  
@lexie.lonask



**3**  
**MADISON BONAVITA**  
Fr.  
F | 6-0  
Longmeadow, Mass.  
Milton Academy  
@bonavita\_maddie



**4**  
**TIANA MCINTYRE**  
Sr.  
D | 5-8  
Park City, Utah  
Park City  
(Quinnipiac)  
@tiana.mcintyre4



**5**  
**EMMA MACINTYRE**  
Fr.  
D | 5-4  
Halifax, Nova Scotia  
Stanstead College  
@emma\_macintyre5



**6**  
**KACEY BLUM**  
Fr.  
F | 5-6  
McLean, Va.  
McLean  
@kacey.blum



**8**  
**VICTORIA BORG**  
Fr.  
F | 5-4  
Burlington, Ontario  
Blyth Academy  
@victoriaborgg



**9**  
**BAILEY GRAY**  
Fr.  
D | 5-4  
Plymouth, Minn.  
Benilde-St. Margaret's  
@baileygray9



**10**  
**DANICA MARK**  
Jr.  
F | 5-7  
Duluth, Minn.  
Duluth Marshall School  
(Union)  
@danica.mark



**11**  
**CHARLIE VOGUE**  
Fr.  
F | 5-6  
Sun Prairie, Wis.  
St. Paul's School  
@charlievoge



**13**  
**KAITLIN FINNEGAN**  
Gr.  
F | 5-4  
Tecumseh, Kan.  
Kansas Connections Academy  
(Lindenwood)  
@kaitlin\_finnegan



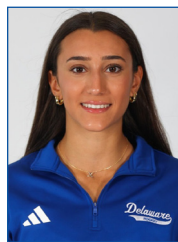
**15**  
**WREN ABBLOUD**  
Fr.  
D | 5-2  
Weymouth, Mass.  
Thayer Academy  
@wren.abboud



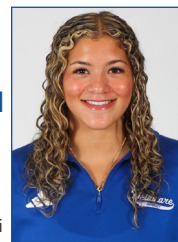
**16**  
**EVA MAYO**  
Fr.  
F/D | 5-6  
Honeoye Falls, N.Y.  
Kent School  
@eva\_mayo06



**17**  
**SUVINA HEIDT**  
Fr.  
D | 5-6  
Aurora, Colo.  
Winchendon School  
@suvina\_heidt77



**18**  
**FRANCESCA BARRESI**  
Fr.  
F | 5-6  
Ottawa, Ontario  
St. Joseph Catholic  
@francescaabarresi



**19**  
**KATELYNN CHARLTON**  
Fr.  
F | 5-7  
Brampton, Ontario  
St. Martins Catholic  
@katelynn.charlton



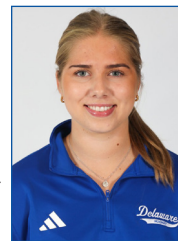
**20**  
**MEERA SMITH**  
Fr.  
F | 5-6  
Victoria, B.C.  
Shawnigan Lake School  
@meerasmith\_



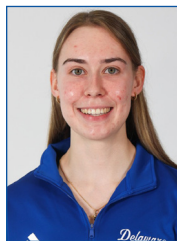
**21**  
**BILLI ROMAN**  
Fr.  
F | 5-3  
Hockessin, Del.  
The Tatnall School  
@billi\_21



**24**  
**TAYLOR SCHOOLEY**  
Fr.  
D | 5-6  
Moon Township, Pa.  
Moon Area  
@taylor.schools



**27**  
**IDA HAAVE**  
Fr.  
F | 5-6  
Kristiansand, Norway  
Lillehammer  
@idahaaave



**31**  
**CHARLOTTE PAYNE**  
Fr.  
G | 5-8  
Oakville, Ontario  
Abbey Park  
@charlottepayne031



**ALLISON COOMEY**

Head Coach  
1st Season  
Niagara '02



**MELISSA SAMOSKEVICH**

Assistant Coach  
1st Season  
Quinnipiac '19



**TAYLOR WILLARD**

Assistant Coach  
1st Season  
Vermont '18



**MICHEL LAROCQUE**

Vol. Goalie Coach  
1st Season  
Boston U. '99