



# DELAWARE FIGHTIN' BLUE HENS

## ICE HOCKEY GAME NOTES

a new era. 



Brendan Thomas, Director, Communications & Creative Services | 207-400-2840 | brendant@udel.edu

### SERIES HISTORY

All Time..... First Meeting  
Streak.....  
At Home.....  
On the Road.....  
Largest Win.....  
Largest Loss.....  
Last Win.....  
Last Loss.....

### HOW TO FOLLOW

TV/Stream..... FloHockey  
Play-by-Play..... Matt Popelka  
  
Student Radio..... 91.3 FM WVUD  
Play-by-Play..... Julia Foster  
  
X/Instagram..... @Delaware\_IH  
Live Stats..... bluehenstats.STATB.US  
Tickets..... bluehens.com/IHTickets

### GAME PROMOTIONS

Friday..... Healthcare Heroes  
..... Healthcare providers receive discounted admission  
Saturday..... Military Appreciation  
..... Free Salute to Service camo bracelet

### WHO ARE WE

Only refer to our institution as the **University of Delaware** or **UD**. Do not use "U of D," "UofD," "the U of D" or "UDeI." Do not use periods in "UD."

We are the Fightin' Blue Hens on first reference and Blue Hens, Hens, or Blue & Gold after that.

### MEDIA RELATIONS

For interview requests for ice hockey student-athletes or coaches, please contact Brendan Thomas, Director of Communications & Creative Services.

Email..... brendant@udel.edu  
Cell..... 207-400-2840

## DELAWARE (1-13-0, 0-8-0 AHA)

GM  
15-16



**Head Coach:** Allison Coomey  
**Record at UD:** 1-13-0 (1st season)  
**Career Record:** same  
**Last:** Lost, 3-2 (ot) at 15/15 Brown



**Head Coach:** Taylor Wasylk  
**Record at LU:** 19-56-7 (3rd season)  
**Career Record:** 83-100-14 (8th season)  
**Last:** Won, 4-1 vs. Syracuse

nov. 14 (5 p.m.) / nov. 15 (1 p.m.) | newark, del. | fred rust ice arena (1,350) | flohockey

### PUCK DROP

- ✦ The University of Delaware hockey team returns home for the final time this semester as it hosts Lindenwood for a two-game Atlantic Hockey America (AHA) series. The Fightin' Blue Hens are looking for their first AHA victory.
- ✦ This weekend serves as a reunion for UD captain **Kaitlin Finnegan**, who played at Lindenwood for five seasons. (2020-25). She appeared in 107 games for the Lions, registering seven goals and 16 assists. She had a career-high 11 points (3g, 8a) during the 2023-24 season.
- ✦ Last weekend, the Blue Hens rallied to force overtime on Sunday at No. 15/15 Brown. **Tiana McIntyre** scored her first-career goal in the second period and **Katelynn Charlton** poked home a rebound. **Kaitlin Finnegan** had a pair of assists, the first Blue Hen to do so, and **Taylor Schooley** added her first collegiate point. **Charlotte Payne** tied a career-high with 51 saves.
- ✦ **Katelynn Charlton** leads Delaware with four goals and two assists for six points. **Kaitlin Finnegan** (2g, 3a) and **Lexie Lonask** (1g, 3a) are second and third, respectively. In goal, **Mattie Robitzer** and **Charlotte Payne** have split time equally making 316 and 309 saves, respectively, in seven games each.
- ✦ Lindenwood enters the weekend with a 3-11-0 overall record and a 2-4-0 mark in AHA play. The Lions split last weekend with Syracuse and scoring 1.6 goals per game, while allowing 3.6 goals to opponents.
- ✦ Three different players lead Lindenwood with eight points, while Tatiana Blichova has a team-high five goals. Lexington Secreto and Madison Bowtell have played the majority of time in goal, recording a .925 and .905 save percentage, respectively.

### HEN LEADERS



#### goals

4

katelynn charlton



#### assists

3

lexie lonask / kaitlin finnegan



#### shots

51

katelynn charlton



#### SV%

.931

charlotte payne

### 2025-26 SCHEDULE

 <b>sept. 26/27</b> Newark, Del. L, 4-1   L, 5-2	 <b>oct. 4/5</b> Newark, Del. L, 5-2   W, 2-1	 <b>oct. 10/11</b> Newark, Del. L, 5-0   L, 7-0	 <b>oct. 17/18</b> Newark, Del. L, 2-1 (ot)   L, 1-0	 <b>oct. 24/25</b> Newark, Del. L, 5-0   L, 5-0	 <b>oct. 31/nov. 1</b> Erie, Pa. L, 3-2 (ot)   L, 4-0	 <b>nov. 8/9</b> Providence, R.I. L, 3-0   L, 3-2 (ot)	 <b>nov. 14/15</b> Newark, Del. 5 pm / 1 pm FloHockey
 <b>nov. 28/29</b> Schenectady, N.Y. 3 pm / 1 pm ESPN+	 <b>dec. 5/6</b> Rochester, N.Y. 3 pm / 2 pm FloHockey	 <b>jan. 2/3</b> Syracuse, N.Y. 6 pm / 3 pm FloHockey	 <b>jan. 8/9</b> Newark, Del. 6 pm / 2 pm FloHockey	 <b>jan. 16/17</b> St. Charles, Mo. 4 pm / 1 pm FloHockey	 <b>jan. 23/24</b> University Park, Pa. 3 pm / 2 pm Big Ten+	 <b>jan. 30/31</b> Newark, Del. 6 pm / 2 pm FloHockey	 <b>feb. 6/7</b> Moon Township, Pa. 3 pm / 3 pm FloHockey

\*all times ET

## A NEW ERA

After a nearly 18-month wait, the new era is finally here and the University of Delaware Fightin' Blue Hens are officially full members of Conference USA as of July 1, 2025. Fourteen of UD's 22 varsity programs will be housed in CUSA, with seven others joining as affiliate members in the Atlantic Sun (women's lacrosse, men's and women's swimming & diving), Atlantic 10 (men's lacrosse), Mid-American Conference (rowing), The Summit League (men's soccer), and Atlantic Hockey America (ice hockey). Field hockey will be joining Mountain Pacific Sports Federation (MPSF) for the 2025 season, joining UC Davis as one of two founding members of the league's sponsorship

An athletic department built on history and tradition, Delaware brings an abundance of success to CUSA having won 10 national championships, 172 team conference titles, 282 individual conference crowns, 342 major conference awards, 2,655 all-league selections, and 543 all-americans.

UD student-athletes complement their athletic success with strong academic performances. During the 2024-25 academic year, the Blue Hens compiled a cumulative 3.41 grade-

point average—the highest in department history, excluding academic terms impacted by COVID-19. This marked the 11th-consecutive year and the 23rd-straight semester in which UD student-athletes have posted a 3.00 GPA or better.

The move will push the Delaware brand across the nation, spanning from the northeast down into Florida, and west as far as New Mexico. However, the reach won't stop there. At least five football games will hit the national scene on CBS Sports Network/ESPN family of networks, including a non-conference tilt on FOX against Colorado. Men's and women's basketball will also have the chance to play nationally televised games as part of CUSA's media rights agreement with CBS Sports Network and ESPN.

Speaking of reach, Delaware's initial announcements about joining Conference USA reached over two billion people according to social media analytics. Put that into perspective - just over one million people live in the state of Delaware. That means these announcements reached over 2,000 Delawares.

With the announcement of Delaware football transitioning to FBS, the University was committed to adding a women's sport to continue to stay Title IX compliant. The University looked at a number of key criteria, including the feasibility, continued commitment to gender equity, recruiting footprint, conference fit, facilities, and ability to win championships.

In its due diligence, the University of Delaware performed a feasibility study funded by the Industry Growth Fund, a joint initiative of the NHL and NHLPA, with the goal of empowering schools exploring the addition of Men's and/or Women's DI varsity ice hockey. The results of the study reinforced UD's findings and made clear that women's ice hockey was the best path forward. In addition to this being the right decision for the University of Delaware, there's also the great benefit of helping to grow a sport that is popular in this region of the country.



### CONFERENCE USA SPONSORED DELAWARE SPORTS

- Baseball
- M/W Basketball
- W Cross Country/Track & Field
- Football
- M/W Golf
- W Soccer
- Softball
- M/W Tennis
- Volleyball

### OTHER DELAWARE SPORTS AFFILIATIONS

- |                |                         |                 |                   |
|----------------|-------------------------|-----------------|-------------------|
| - Field Hockey | MPSF                    | - W Rowing      | Mid-American      |
| - Ice Hockey   | Atlantic Hockey America | - M Soccer      | The Summit League |
| - M Lacrosse   | Atlantic 10             | - M/W Swim/Dive | Atlantic Sun      |
| - W Lacrosse   | Atlantic Sun            |                 |                   |

## QUICK FACTS

School.....	University of Delaware
Location.....	Newark, Del.
Founded .....	1743
Enrollment .....	24,039
Interim President.....	Laura Carlson
School Website.....	www.udel.edu
Nickname .....	Fightin' Blue Hens
School Colors .....	Blue & Gold
Athletics Website .....	www.bluehens.com
Interim Director of Athletics.....	Jordan Skolnick
Conference.....	Atlantic Hockey America
Website .....	www.atlantichockeyamerica.com

## HOCKEY PROGRAM

Arena .....	Fred Rust Ice Arena
Capacity .....	1,350
First Season of Ice Hockey.....	2025-26
All-Time Record .....	1-13-0
All-Time Fred Rust Record.....	1-13-0
National Championships .....	0
Conference Championships.....	0
Head Coach .....	Allison Coomey (Niagara '02)
Career Record.....	1-13-0 / 1st season
Record at UD.....	same
Letterwinners Returning/Lost.....	0/0
Starters Returning/Lost .....	0/0
Newcomers.....	22
2024-25 Overall Record .....	0-0
2024-25 AHA Record .....	0-0
2024-25 AHA Finish.....	n/a
2024-25 Postseason.....	n/a

## TABLE OF CONTENTS

Storylines .....	3-6
Program information .....	3
Statistical comparison.....	3
Delaware record when.....	4
The last time .....	5
AHA standings.....	6
Roster & Pronunciations .....	7
Head coach Allison Coomey .....	8
Assistant coaches & support staff .....	9
Career stats & highs.....	10-12
Starters by game .....	13
Game-by-game leaders.....	14
Scoring plays .....	15
Team stats.....	16
NCAA rankings .....	17-18
TV roster.....	19

## WHAT TO LOOK FOR...

- A victory this weekend would snap UD's 10-game losing streak and would be the program's first-ever AHA victory.
- 11 Blue Hens are still looking for their first collegiate goal, and seven are in search of their first collegiate point.

## 22nd varsity program

Delaware announced the addition of ice hockey as the University's 22nd varsity intercollegiate program in December 2023. The addition of hockey was in conjunction with Delaware's transition to Conference USA and FBS football and UD's continued commitment to stay Title IX compliant.

## 45th D1 program

Delaware becomes the 45th college or university to sponsor a Division I women's ice hockey program. The Blue Hens are the first program to start at the Division I level since Assumption College started its program ahead of the 2023-24 season.

## inaugural roster

The Blue Hens have 22 student-athletes on their inaugural roster, featuring 17 freshmen and four transfers. Delaware also brought up goalie Sydney Butler, who spent the last three years playing for UD's club women's hockey team. The 17 freshmen on the roster is the most on any roster in the country, three more than Providence, which is second with 14 freshmen.

## first state, first season

The inaugural season is not only the first year that UD will have a Division I program, but the Blue Hens are the first Division I ice hockey team, men or women, in the state of Delaware.

The only NHL player to have ever come from the First State is Mark Eaton, who played 13 seasons for Philadelphia, Nashville, Pittsburgh, and the New York Islanders.

## hockey in the south

Of the 45 Division I women's ice hockey teams in the country, the University of Delaware is the second-most southern program. Only Lindenwood in St. Charles, Missouri, also in Atlantic Hockey America (AHA), is further south.

## for the 302

Delaware is one of 11 states that are represented by one area code. Delaware is the 302, while the other states are: Alaska, Hawaii, Maine, Montana, New Hampshire, North Dakota, Rhode Island, South Dakota, Vermont, and Wyoming.

## pro relations

A pair of Blue Hens are related to professional hockey players in both the NHL and PWHL.

Freshman forward **Katelynn Charlton** is the cousin of Mikyla Grant-Mentis who currently plays for PWHL Seattle.

Assistant Coach **Melissa Samoskevich** has twin younger siblings who both play professional hockey. Her younger brother, Mackie, was a first-round draft pick (24th overall) by the Florida Panthers in 2021 and has won two Stanley Cups. Her sister, Maddy, was drafted in the fifth round (39th overall) by PWHL Vancouver in 2025.

## proud members of aha

Delaware is the seventh member of Atlantic Hockey America (AHA), joining fellow league members Lindenwood, Mercyhurst, Penn State, RIT, Robert Morris, and Syracuse. Formerly College Hockey America (CHA), the conference merged with the men's Atlantic Hockey Association prior to the 2024-25 season to form the AHA which now features 10 men's teams and seven women's teams.

The AHA has had alumni compete for eight countries at the Winter Olympics and skated off with 14 medals, including four gold. Professionally, several conference alumni are currently on Professional Women's Hockey League (PWHL) rosters, including three selections in the 2025 PWHL Draft in June.

## STATISTICAL COMPARISON

Category	DEL	NCAA	AHA	LU	NCAA	AHA
Scoring Offense	0.86	45th	7th	1.64	39th	6th
Scoring Defense	3.79	43rd	7th	3.57	42nd	6th
Scoring Margin	-2.93	45th	7th	-1.93	41st	6th
Power-Play Pct.	.018	44th	7th	.125	31st	5th
Penalty Killing Pct.	.848	22nd	2nd	.800	32nd	4th
Goals	12	43rd	7th	23	27th	6th
Assists	15	44th	7th	33	30th	6th
Points	27	44th	7th	56	30th	6th
Power Play Goals	1	43rd	7th	5	26th	6th
Shorthanded Goals	0	--	--	1	6th	3rd
Saves	625	1st	1st	481	4th	2nd
Faceoff Win Pct.	.385	44th	7th	.438	39th	6th
Penalty Minutes per Game	8.36	15th	3rd	7.57	23rd	6th

### no stranger to starting programs

Head coach **Allison Coomey** was hired as the Blue Hens' first head coach in March 2024. She has spent the past year and a half compiling a roster and coaching staff ahead of the program's inaugural season.

This isn't the first time that Coomey has helped launch a new program. As a student-athlete, she was a member of the inaugural women's ice hockey team at Niagara University. She played four seasons for the Purple Eagles, serving as an alternate captain her senior season when Niagara advanced all the way to the 2002 NCAA Women's Frozen Four.

### a day for the record books

The Blue & Gold picked up the first victory in program history on Sunday, October 5, securing a 2-1 win against Holy Cross. **Charlotte Payne** made 49 saves, then a career-high, while **Meera Smith** scored her first-career goal in the second period and **Katelynn Charlton** scored the program's first power play goal which proved to be the game-winner.

### first commit, first goal

Freshman **Francesca Barresi** cemented herself in the program record book when she scored the first-ever goal in Delaware ice hockey history during the Blue Hens' inaugural game against LIU on September 26. The Ottawa, Canada native blocked a pass and came in alone on a breakaway to net her first collegiate goal midway through the third period. It was only fitting that Barresi scored the first goal as she was the first player to commit to play for the program in November 2024.

### blocking shots

The Blue Hens' defense has done everything they can to keep the puck from reaching the net, registering 348 blocked shots through the first 14 games, which leads all of Division I. Robert Morris (221) and Lindenwood (216) are second and third in the country, respectively.

Individually, **Lexie Lonask** leads the AHA and the entire country with 71 blocked shots. She has two games with at least 10 blocks, including a career-high 11 at No. 15/15 Brown on November 9. **Bailey Gray** (39), **Kaitlin Finnegan** (34), **Emma MacIntyre** (32) and are also among the top 10 nationally.

### faceoff aces

**Meera Smith** leads the Blue Hens and ranks ninth in the AHA with 99 faceoff wins, while **Ida Haave** is 12th in the conference with 84 wins at the dot.

**Francesca Barresi** has only played seven games at center but is already third on the Hens with 68 faceoff wins and has three games with at least 12 wins.

### bringing the payne

**Charlotte Payne** owns a .931 save percentage through her first seven games, making 309 stops on 332 shots faced. Her save percentage ranks second nationally among freshmen goaltenders who have appeared in at least five games.

### charlton's big weekend

Freshman **Katelynn Charlton** was named the AHA Rookie of the Week on October 7, earning the program's first-ever weekly honor after a big weekend series against Holy Cross. In the series opener, she scored her first-career goal, part of two-goal performance to become the first Blue Hen to score multiple goals in a single game. Charlton followed that up with the eventual game-winning goal midway through the second period in the season finale. It was UD's first power play goal and provided the difference in Delaware's first win in program history, a thrilling 2-1 victory.

### no mercy from lonask

**Lexie Lonask** was named the AHA Rookie of the Week on November 4 for her performance at Mercyhurst. She scored her first-career goal with three seconds remaining in regulation to force overtime in the series opener. She also blocked 19 shots over the two games, including a then-career-high 10 blocks in the first game.

### saves on saves on saves

Delaware goaltenders **Mattie Robitzer** and **Charlotte Payne** have been exceptionally busy in between the pipes this season, leading all of Division I with 625 combined saves through the first 14 games. Overall, the duo has eight games with at least 48 saves and own six of the top-12 single-game performances in the country this season.

Robitzer has had three games with at least 50 saves this season, including a career-high 63 at RV/RV Mercyhurst which is the second-most in the country. She also had 62 saves against No. 6/6 Penn State and 57 saves against Holy Cross which rank third and fourth for the most saves in a single game this season, respectively.

Payne has been equally impressive to start her collegiate career. Against Holy Cross, she stopped 49-of-50 shots to earn her first collegiate victory, and seal Delaware's first-ever win. Payne has made a career-high 51 saves twice - against No. 6/6 Penn State and at No. 15/15 Brown - and also had a 50-save performance at RV/RV Mercyhurst.

### diverse roster

Delaware's inaugural roster has 22 student-athletes. The roster includes 15 Americans from 12 states, six from Canada, and one from Norway. Only three of the 12 states represented (Massachusetts, Minnesota, Pennsylvania) are called home by more than one Blue Hen. The other nine states include Arizona, Colorado, Connecticut, Delaware, Kansas, New York, Utah, Virginia, and Wisconsin.

### DELAWARE RECORD WHEN...

	25-26	COOMEY
Overall	1-13-0	1-13-0
Conference	0-8-0	0-8-0
Non-conference	1-5-0	1-5-0
Home	1-9-0	1-9-0
Away	0-4-0	0-4-0
Neutral	0-0-0	0-0-0
Current streak	L10	L10
Current home streak	L6	L6
Current road streak	L4	L4
Current neutral streak	--	--
Day game	1-9-0	1-9-0
Night game	0-4-0	0-4-0
September	0-2-0	0-2-0
October	1-8-0	1-8-0
November	0-3-0	0-3-0
December	0-0-0	0-0-0
January	0-0-0	0-0-0
February	0-0-0	0-0-0
vs. ranked opponent	0-4-0	0-4-0
Scoring first	0-2-0	0-2-0
Opponent scores first	1-11-0	1-11-0
Scoring 0-1 goals	0-9-0	0-9-0
Scoring 2 goals	1-4-0	1-4-0
Scoring 3 goals	0-0-0	0-0-0
Scoring 4+ goals	0-0-0	0-0-0
Allowing 0-1 goals	1-1-0	1-1-0
Allowing 2 goals	0-1-0	0-1-0
Allowing 3 goals	0-3-0	0-3-0
Allowing 4+ goals	0-8-0	0-8-0
Leading after 1st	0-1-0	0-1-0
Trailing after 1st	0-6-0	0-6-0
Tied after 1st	1-6-0	1-6-0
Leading after 2nd	1-1-0	1-1-0
Trailing after 2nd	0-8-0	0-8-0
Tied after 2nd	0-4-0	0-4-0
Overtime	0-3-0	0-3-0
Shootout	0-0-0	0-0-0
1-goal games	1-4-0	1-4-0
2-goal games	0-0-0	0-0-0
3-goal games	0-4-0	0-4-0
4+-goal games	0-5-0	0-5-0
Out-shooting opponent	0-1-0	0-1-0
Out-shot by opponent	1-12-0	1-12-0
Shots are even	0-0-0	0-0-0
Winning more faceoffs	0-1-0	0-1-0
Losing more faceoffs	1-12-0	1-12-0
Faceoffs are even	0-0-0	0-0-0
Taking more penalties	0-4-0	0-4-0
Taking fewer penalties	1-6-0	1-6-0
Penalties are even	0-3-0	0-3-0



### opening weekend of firsts

Delaware's inaugural weekend against LIU saw a lot of firsts across the program as 16 student-athletes made their collegiate debuts and four others made their first Blue Hen appearances.

Freshmen **Francesca Barresi** and **Billi Roman** scored their first collegiate goals, while **Katelynn Charlton** and **Lexie Lonask** recorded their first career assists.

Graduate student **Kaitlin Finnegan** (goal) and senior **Tiana McIntyre** (assist) registered their first points in the Blue & Gold after starting their careers at Lindenwood and Quinnipiac, respectively.

It was also the first game behind the bench for head coach **Allison Coomey** after 21 seasons as an assistant coach at five different programs.

### oh captain, my captains

Delaware will be led by four captains this season. Graduate student **Kaitlin Finnegan** and senior **Tiana McIntyre** will be the first Blue Hens to don the captain's "C" while juniors **Mattie Robitzer** and **Danica Mark** will serve as alternate captains.

Finnegan has appeared in 107 career games after spending her first five seasons at Lindenwood. McIntyre played 67 games over her first three seasons at Quinnipiac. Robitzer and Mark both played two seasons at Northeastern and Union, respectively.

### unique home states

Freshman **Billi Roman** (Hockessin) is the only active Division I women's ice hockey player to hail from the state of Delaware. Likewise, graduate student **Kaitlin Finnegan** (Tecumseh) is the only active player in DI from Kansas.

When senior **Tiana McIntyre** (Park City) entered her freshman season at Quinnipiac in 2022-23, she became the first woman from the state of Utah to play Division I ice hockey. There are now two as Eden Granley (American Fork) is a sophomore at St. Anselm.

Freshman **Lexie Lonask** (Chandler) is one of three active players in Division I from Arizona. The other two are Union freshmen Natalie Andelova (Laveen Village) and Isabel Powers (Scottsdale).

### home sweet home

While Delaware will be playing its first home games in Fred Rust Ice Arena this season, a pair of Blue Hens are quite familiar with the venue. Freshman **Billi Roman** played her high school hockey at Fred Rust while playing for The Tatnall School. Junior **Mattie Robitzer** grew up just over the Pennsylvania border in Kennett Square and often played youth hockey in Newark.

### norwegian national

Freshman **Ida Haave** is a member of the Norwegian National Team. A native of Kristiansand, Norway, Haave represented her home country at the 2024 and 2025 IIHF Women's World Championships. In 2024 in Austria, Haave helped lead Norway to the top spot at the Women's World Championship Division I Group A in Austria, earning a promotion into the top division in 2025 for the first time since 1997. At the 2025 games in Czechia, Haave recorded one assist in four games as Norway went 1-3 in pool play, finishing fourth of five teams in Group B.

### elevated

Senior goalie **Sydney Butler** is entering her fourth year at the University of Delaware. The wildlife ecology and conservation major spent her first three years playing for UD's women's club hockey team.

### destined to be a blue hen

Freshman **Billi Roman** is not only the lone Delawarean on the roster, but the only woman from the First State playing Division I hockey. Hailing from Hockessin, Roman attended The Tatnall School in Wilmington, where she suited up for the boy's hockey team that played its home games at Fred Rust Ice Arena.

Roman has several relatives who attended UD, including her father and grandfather, as well as an uncle and two cousins who played for Delaware's club hockey programs. She is wearing No. 21 in honor of her late uncle, Tim Roman, who played for the Blue Hens in the early 1990s.

### twins

The genetic trait of twins runs strong on the Blue Hens roster. Head coach **Allison Coomey** has a twin Alissa, while junior goaltender **Mattie Robitzer** also has a twin sister - Lily. Assistant coach **Melissa Samoskevich** has two younger siblings who are twins - Mackie and Maddy - who both play professional hockey.

### growing the game out west

Senior captain **Tiana McIntyre** is proud to own the title as the first Division I ice hockey player from Utah. This past summer, McIntyre began working for Smith Entertainment Group (SEG), the company that owns the NHL's Utah Mammoth and the NBA's Utah Jazz. In her role, she assists with the development and growth of youth hockey in Utah, going around the state and helping run camps and clinics. McIntyre has worked side-by-side with great women's hockey players such as former U.S. Olympians Hillary Knight and Lindsey Fry, Walter Cup Champion Dominique Petrie of the Minnesota Frost in the PWHL, and NHL veteran Alexander Kerfoot.

### THE LAST TIME DELAWARE...

Scored 4 goals.....	
Scored 5+ goals.....	
Allowed 5+ goals.....	10/25/25 vs. Robert Morris (L, 5-0)
Won in OT.....	
Lost in OT.....	11/9/25 at #15/15 Brown (L, 3-2)
Won in a shootout.....	
Lost in a shootout.....	
Had a shutout.....	
Was shutout.....	11/8/25 at #15/15 Brown (L, 3-0)
Took 30-39 shots.....	
Took 40-49 shots.....	
Took 50+ shots.....	
Allowed 30-39 shots.....	11/8/25 at #15/15 Brown (37)
Allowed 40-49 shots.....	10/25/25 vs. Robert Morris (48)
Allowed 50+ shots.....	11/9/25 at #15/15 Brown (54)
Allowed 60+ shots.....	10/31/25 at RV/RV Mercyhurst (66)
Scored 2 PP goals.....	
Scored 3+ PP goals.....	
Scored a shorthanded goal.....	
Had 4 different goal scorers.....	
Had 5+ goal scorers.....	
Did not commit a penalty.....	
Played a ranked team.....	11/9/25 at #15/15 Brown (L, 3-2 ot)
Beat a ranked team.....	

### THE LAST TIME A BLUE HEN...

Scored 2 goals.....	Charlton, 10/4/25 vs. Holy Cross
Scored 3 goals.....	
Had 2 assists.....	Kaitlin Finnegan, 11/9/25 at #15/15 Brown
Had 3 assists.....	
Had 3+ points.....	
Had 5+ shots.....	Charlton, 11/9/25 at #15/15 Brown (8)
Made 20+ saves.....	Payne, 9/27/25 vs. LIU (22)
Made 25+ saves.....	Robitzer, 10/18/25 vs. Syracuse (30)
Made 30+ saves.....	Robitzer, 11/8/25 at #15/15 Brown (34)
Made 40+ saves.....	Robitzer, 10/25/25 vs. Robert Morris (43)
Made 50+ saves.....	Payne, 11/9/25 at #15/15 Brown (51)
Made 50+ saves.....	Robitzer, 10/31/25 at RV/RV Mercyhurst (63)
Recorded a shutout.....	
Scored a shorthanded goal.....	

## IN THE RANKINGS

The University of Delaware is ranked in the top 1.6% globally, among nearly 21,000 institutions, based on educational quality, employability, faculty quality and research. In late 2024, Wall Street Journal ranked UD at No. 10 among public universities and No. 26 among all U.S. universities based on student professional readiness and career outcomes.

**Physical Therapy graduate program**  
No. 1 in the nation  
(U.S. News & World Report)

One of 24 UD graduate programs ranked in the top-100 by U.S. News

**Entrepreneurship undergraduate program**  
No. 3 in the Mid-Atlantic  
(The Princeton Review)

**Chemical Engineering undergraduate program**  
No. 4 in the nation  
(U.S. News & World Report)

One of six UD undergraduate programs ranked in the top-100 by U.S. News

**Chemical Engineering graduate program**  
No. 8 in the nation  
(U.S. News & World Report)

One of 24 UD graduate programs ranked in the top-100 by U.S. News

**Online MBA program**  
No. 20 out of 355 in the nation  
(U.S. News & World Report)

**Online Master's in Education program**  
No. 20 out of 313 in the nation  
(U.S. News & World Report)

## BEST VALUE

UD ranks among the country's best value propositions, according to U.S. News & World Report, Wall Street Journal, Kiplinger's and Forbes. This summer, The Princeton Review ranked UD among its 209 Best Value Colleges for 2025, earning one of the publication's highest return-on-investment ratings. Money magazine awarded UD 4½ stars out of a possible five in its 2025-26 rating of America's best colleges. The University, according to Money, "stands out for its affordability" as a public college providing an excellent value for in-state students, and is considered one of the Best Colleges in the Northeast.

## international experience

The Blue Hens have loads of international experience among its roster and coaching staff.

Freshman **Ida Haave** is currently a member of the Norwegian National Team, representing her country at the 2024 and 2025 IIHF Women's World Championships.

Freshman **Katelynn Charlton** represented the Caribbean at the 2025 Dream Nations Cup in late May and early June. She helped lead her squad to the championship game, where the Caribbean fell to Egypt in overtime. The tournament was played at The Rink at American Dream in East Rutherford, New Jersey and supported by the New Jersey Devils (NHL) and New York Sirens (PWHL).

Assistant coach **Melissa Samoskevich** won gold with Team USA at the 2019 IIHF Women's World Championship in Finland, playing in all seven games and scoring two goals. Samoskevich also represented the U.S. at the 2014 and 2015 U18 Women's World Championships. She had two assists in 2014 and six goals, including a hat trick against Russia, in 2015.

Assistant coach **Taylor Willard** won a silver medal with Team USA at the 2013 U18 Women's World Championships where she picked up three assists in five games.

Head coach **Allison Coomey** was on staff with the silver-medal winning USA National Team at the 2022 Beijing Olympic Games as a team scout. She served as the head coach for the U23 U.S. Women's National Team in 2021 and 2022 and spent time as an assistant coach for the senior national team during the 2021 IIHF World Championship.

## head coaching couple

Head coach **Allison Coomey** is married to Delaware Women's Soccer Head Coach **Kelly Lawrence**, who is in her third season at the helm of the Blue Hens.

## aha connections

Several Blue Hens have strong ties to Delaware's new conference. Graduate student and team captain **Kaitlin Finnegan** played five seasons at Lindenwood in Missouri. Finnegan skated in 107 games for the Lions, netting seven goals and adding 16 assists. Freshman **Taylor Schooley** is the daughter of Derek Schooley, who has been the head coach of the Robert Morris men's ice hockey team since 2004. Additionally, her older sister, Kaitlyn is a junior defenseman for Robert Morris.

Additionally, head coach **Allison Coomey** (2017-24) and assistant coach **Melissa Samoskevich** (2020-22) both spent time behind the bench at Penn State.

## nhl partners

Shortly after announcing the addition of women's ice hockey as a varsity sport, the University of Delaware made another important announcement. In a first-of-its-kind pairing, Delaware and the Philadelphia Flyers formed a strategic partnership aligned around growing the game of hockey, community engagement, and launching a world-class women's ice hockey program. The Blue Hens became the only NCAA Division I women's ice hockey program in the country to have a partnership with an NHL team.

Delaware ice hockey student-athletes will have access to career and professional development with the Flyers, as well as a chance to participate in the Flyers Next Shift program. The program was developed to allow women in college to shadow professional women throughout the organization on game nights. Other opportunities for internships in both business and hockey operations could happen as well.

The partnership also brings co-hosted youth hockey clinics to Fred Rust Ice Arena, the Blue Hens' home in Newark, as well as bringing the Flyers Community Caravan to UD.

## 2025-26 AHA STANDINGS

	AHA PTS	AHA GP	AHA RECORD	AHA OW-OL	AHA SOW-SOL	AHA GF-GA	OVERALL GP	OVERALL RECORD	OVERALL GF-GA
Penn State	24	8	8-0-0	0-0	0-0	40-2	12	12-0-0	56-8
Mercyhurst	11	6	4-2-0	1-0	0-0	20-14	14	7-6-1	38-33
Syracuse	10	6	4-2-0	2-0	0-0	12-12	13	6-7-0	24-37
RIT	10	6	3-3-0	0-1	0-0	19-13	14	7-7-0	41-30
Robert Morris	8	8	3-5-0	1-0	0-0	16-26	14	5-9-0	29-46
Lindenwood	7	6	2-4-0	0-1	0-0	10-21	14	3-11-0	23-50
<b>Delaware</b>	<b>2</b>	<b>8</b>	<b>0-8-0</b>	<b>0-2</b>	<b>0-0</b>	<b>3-32</b>	<b>14</b>	<b>1-13-0</b>	<b>12-53</b>

## 2025-26 DELAWARE NUMERICAL ROSTER

#	NAME	POS.	YR.	HT.	S/C	HOMETOWN/HIGH SCHOOL (PREV. SCHOOL)
1	Mattie Robitzer	G	Jr.	5-4	L	Kennett Square, Pa. / Unionville (Northeastern)
2	Lexie Lonask	D	Fr.	5-8	R	Chandler, Ariz. / Shattuck St. Mary's [Minn.]
3	Madison Bonavita	F	Fr.	6-0	L	Longmeadow, Mass. / Milton Academy
4	Tiana McIntyre	D	Sr.	5-8	R	Park City, Utah / Park City (Quinnipiac)
5	Emma MacIntyre	D	Fr.	5-4	R	Halifax, Nova Scotia / Stanstead College
6	Kacey Blum	F	Fr.	5-6	R	McLean, Va. / McLean
8	Victoria Borg	F	Fr.	5-4	L	Burlington, Ontario / Blyth Academy
9	Bailey Gray	D	Fr.	5-4	L	Plymouth, Minn. / Benilde-St. Margaret's
10	Danica Mark	F	Jr.	5-7	R	Duluth, Minn. / Duluth Marshall School (Union)
11	Charlie Voge	F	Fr.	5-6	R	Sun Prairie, Wisc. / St. Paul's School
13	Kaitlin Finnegan	F	Gr.	5-4	R	Tecumseh, Kan. / Kansas Connections Academy (Lindenwood)
15	Wren Abboud	F	Fr.	5-2	L	Weymouth, Mass. / Thayer Academy
16	Eva Mayo	F/D	Fr.	5-6	R	Honeoye Falls, N.Y. / Kent School
17	Suvina Heidt	D	Fr.	5-6	R	Aurora, Colo. / Winchendon School [Mass.]
18	Francesca Barresi	F	Fr.	5-6	L	Ottawa, Ontario / St. Joseph Catholic
19	Katelynn Charlton	F	Fr.	5-7	L	Brampton, Ontario / St. Martins Catholic Secondary
20	Meera Smith	F	Fr.	5-6	R	Victoria, British Columbia / Shawnigan Lake School
21	Billi Roman	F	Fr.	5-3	L	Hockessin, Del. / The Tatnall School
24	Taylor Schooley	D	Fr.	5-6	L	Moon Township, Pa. / Moon Area
27	Ida Haave	F	Fr.	5-6	L	Kristiansand, Norway / Norges Toppidrettsgymnas Lillehammer
31	Charlotte Payne	G	Fr.	5-8	L	Oakville, Ontario / Abbey Park
35	Sydney Butler	G	Sr.	5-6	R	Darien, Conn. / AITE

## PRO-NUN-SEE-AY-SHUNS

#1	Mattie ROBITZER	ROW-bit-zer	#18	Francesca BARRESI	buh-reh-SEE
#2	Lexie LONASK	low-NASK	#24	Taylor SCHOOLEY	school-EE
#3	Madison BONAVIDA	bawn-uh-VEE-tuh	#27	IDA HAAVE	ee-da ho-VUH
#6	Kacey BLUM	bloom	AC	Melissa SAMOSKEVICH	sam-OH-skeh-vitch
#15	Wren ABBODD	ah-BOOD			
#17	SUVINA HEIDT	seh-VEE-nuh height			

## HEAR OUR NAMES



## ROSTER BY CLASS

**GRADUATES (1)**

Kaitlin Finnegan

**SENIORS (2)**Sydney Butler  
Tiana McIntyre**JUNIORS (2)**Danica Mark  
Mattie Robitzer**FRESHMEN (17)**Wren Abboud  
Francesca Barresi  
Kacey Blum  
Madison Bonavita  
Victoria Borg  
Katelynn Charlton  
Bailey Gray  
Ida Haave  
Suvina HeidtLexie Lonask  
Emma MacIntyre  
Eva Mayo  
Charlotte Payne  
Billi Roman  
Taylor Schooley  
Meera Smith  
Charlie Voge

## ALPHABETICAL

#	NAME	POS.
15	Wren Abboud	F
18	Francesca Barresi	F
6	Kacey Blum	F
3	Madison Bonavita	F
8	Victoria Borg	F
35	Sydney Butler	G
19	Katelynn Charlton	F
13	Kaitlin Finnegan	F
9	Bailey Gray	D
27	Ida Haave	F
17	Suvina Heidt	D
2	Lexie Lonask	D
5	Emma MacIntyre	D
10	Danica Mark	F/D
16	Eva Mayo	F/D
4	Tiana McIntyre	D
31	Charlotte Payne	G
1	Mattie Robitzer	G
21	Billi Roman	F
24	Taylor Schooley	D
20	Meera Smith	F
11	Charlie Voge	F

## GEOGRAPHICAL

**Arizona (1)**

2 Lexie Lonask D

**Canada (6)**18 Francesca Barresi F  
5 Emma MacIntyre D  
8 Victoria Borg F  
19 Katelynn Charlton F  
31 Charlotte Payne G  
20 Meera Smith F**Colorado (1)**

17 Suvina Heidt D

**Connecticut (1)**

35 Sydney Butler G

**Delaware (1)**

21 Billi Roman F

**Kansas (1)**

13 Kaitlin Finnegan F

**Massachusetts (2)**15 Wren Abboud F  
3 Madison Bonavita F**Minnesota (2)**9 Bailey Gray D  
10 Danica Mark F**New York (1)**

16 Eva Mayo F/D

**Norway (1)**

27 Ida Haave F

**Pennsylvania (2)**1 Mattie Robitzer G  
24 Taylor Schooley D**Utah (1)**

4 Tiana McIntyre D

**Virginia (1)**

6 Kacey Blum F

**Wisconsin (1)**

11 Charlie Voge F



## THE COOMEY FILE

**Hometown:** Baldwinsville, N.Y.  
**Alma Mater:** Niagara '02  
**Degree:** Education  
**Master's:** School Counseling  
**Years in Coaching:** 22nd in 2025-26

## NOTABLE HIGHLIGHTS

2019 AHCA Women's Hockey Assistant COY  
 2013 National Champ. Appearance (BU)  
 2011 National Champ. Appearance (BU)  
 2002 Niagara Team Captain  
 2002 Women's Frozen Four  
 1999 Niagara WLAX Rookie of the Year

## AS DELAWARE HEAD COACH

<b>Year</b>	1st in 2025-26
<b>Overall Record</b>	1-13-0
<b>Home</b>	1-9-0
<b>Away</b>	0-4-0
<b>Neutral</b>	0-0-0
<b>vs. Ranked Teams</b>	0-4-0
<b>In AHA Games</b>	0-8-0

## COOMEY YEAR-BY-YEAR

YEAR	W-L-T	PCT.	CONF
2025-26	1-13-0	.083	0-8-0
<b>TOTAL</b>	<b>1-11-0</b>	<b>.083</b>	<b>0-8-0</b>

**First career win:** 2-1 vs. Holy Cross, 10/5/25  
**Postseason:**

## ALL-TIME VS OPPONENTS

<b>Brown</b>	0-2-0
<b>Holy Cross</b>	1-1-0
<b>LIU</b>	0-2-0
<b>Lindenwood</b>	0-0-0
<b>Mercyhurst</b>	0-2-0
<b>Penn State</b>	0-2-0
<b>RIT</b>	0-0-0
<b>Robert Morris</b>	0-2-0
<b>Syracuse</b>	0-2-0
<b>Union</b>	0-0-0

# HEAD COACH ALLISON COOMEY

With over two decades of women's ice hockey coaching experience, the University of Delaware selected Allison Coomey to be the inaugural head coach of the women's ice hockey program on March 26, 2024.

Coomey comes to Newark after spending the past seven seasons at Penn State. She served as an assistant coach for three seasons before being promoted to associate head coach in 2020-21.

Over the course of her career, Coomey has coached four student-athletes to the Olympics, eight to national teams, four All-Americans, 15 major conference award winners, and 47 all-conference selections over her time at Penn State and Boston U.

Coomey and the Nittany Lions captured the past two league tournament titles, earning a bid to the NCAA Tournament. The team also claimed the CHA regular season title in three of the past four seasons.

Primarily responsible for coaching defense, Coomey's leadership turned the Nittany Lions into one of the best defensive units in the country by allowing just 1.88 goals per game over the past five seasons dating back to 2019-20.

Selected for various international coaching roles with USA Hockey, Coomey was on staff with the silver-medal winning USA National Team at the 2022 Beijing Olympic Games as a team scout and extension of the coaching staff. Coomey also served as the head coach for the U23 US Women's National Team in 2021 and 2022.

Coomey also spent time as an assistant coach for the USA senior national team during the 2021 IIHF World Championship. She was also a member of USA Hockey's scouting staff at the 2019 IIHF U18 Women's World Championship.

At the 2019 America Hockey Coaches Association Convention, Coomey received the AHCA Women's Hockey Assistant Coach of the Year award for her outstanding career resume.

Prior to Penn State, Coomey spent nine seasons at Boston University where she helped the Terriers qualify for the NCAA Tournament six times, including a pair of NCAA Championship appearances in 2011 and 2013. While at BU, Coomey coached four Olympians who combined to win six gold medals for the Canadian National Team at the 2010 and 2014 Winter Olympic Games.

A four-year letterwinner at Niagara, Coomey returned to her alma mater as an assistant coach from 2004-08, helping the Purple Eagles reach the CHA title game twice.

Before Niagara, Coomey served as an assistant coach at Plattsburgh in 2003-04 where she helped guide the Cardinals to the 2004 Eastern Collegiate Athletic Conference (ECAC) West Division III regular-season title and the NCAA Division III semifinals. Coomey secured her first job in the industry as an assistant women's hockey coach at Connecticut College.

The Baldwinsville, New York, native earned two degrees from Niagara, a bachelor's degree in education in 2002 and a master's degree in school counseling in 2008. She was a two-time ECAC All-Academic Team member and earned a spot on the Metro Atlantic Athletic Conference All-Academic Team.

Coomey was a two-sport letterwinner at Niagara, playing ice hockey and lacrosse from 1998-2002. On the ice, she served as an alternate captain during her senior season and helped the team to its most successful campaign in program history. The Purple Eagles reached the 2002 NCAA Women's Frozen Four and finished tied for third in the final national poll. On the lacrosse field, she earned the team's rookie of the year award.

## COOMEY'S COACHING ASSIGNMENTS

YEAR	SCHOOL	POSITION
2025-Pres.	Delaware	Head Coach
2017-24	Penn State	Assistant Coach / Associate Head Coach
2008-17	Boston U.	Assistant Coach
2004-08	Niagara	Assistant Coach
2003-04	Plattsburgh	Assistant Coach
2002-03	Connecticut College	Assistant Coach

## SUPERLATIVES UNDER COOMEY

Goals Scored	2, 5x, last at #15/15 Brown (11/9/25)	Goals Allowed	7, vs. #6/6 Penn State (10/11/25)
Most Shots on Goal	29, vs. LIU (9/27/25)	Fewest Opponent SOG	27, vs. LIU (9/27/25)
Fewest Shots on Goal	1, vs. #6/6 Penn State (10/11/25)	Most Opponent SOG	69, vs. #6/6 Penn State (10/11/25)
Power Play Goals	1, vs. Holy Cross (10/5/25)	Opponent PP Goals	2, at #15/15 Brown (11/8/25)
Shorthanded Goals	--	Opponent SH Goals	1, 3x, last vs. #6/6 Penn State (10/11/25)
Saves	63, at RV/RV Mercyhurst (10/31/25)	Opponent Saves	27, vs. LIU (9/27/25)
Penalties	6, vs. Robert Morris (10/25/25)	Opponent Penalties	9, vs. Syracuse (10/17/25)
Penalty Minutes	21, at RV/RV Mercyhurst (10/31/25)	Opponent Penalty Minutes	18, vs. Syracuse (10/17/25)



## ASSISTANT COACHES

### MELISSA SAMOSKEVICH



An IIHF World Champion with Team USA, Samoskevich joined the University of Delaware ice hockey program as its first-ever assistant coach in July of 2024.

Samoskevich came to Newark after spending the 2023-24 season as an assistant coach at Princeton.

With the Tigers, she assisted with video analysis, practice planning, drill implementation, special teams, and game management.

In the 2022-23 season, Samoskevich served as the director of player development and operations at her alma mater, Quinnipiac. The Bobcats went 30-10, making the ECAC Hockey semifinals and earning an at-large NCAA tournament bid.

Samoskevich spent the previous two seasons at Penn State with head coach Allison Coomey, helping the Nittany Lions to an overall record of 34-13-7 and 24-5-5 in College Hockey America.

A Sandy Hook, Connecticut native, Samoskevich scored 54 goals and added 55 assists during her undergraduate career at Quinnipiac, ranking third and fifth, respectively in school history. Her 109 points were the fourth-most in program history. Samoskevich was an ECAC Hockey All-Rookie honoree in 2016 while helping the Bobcats to the ECAC tournament title.

Following her final season at Quinnipiac, Samoskevich was named to the U.S. team for the 2019 IIHF Women's World Championship in Finland, playing in all seven games as the Americans went undefeated to win the gold medal. Samoskevich had two goals during the pool-play round, one each against Finland and Russia.

She also donned the red, white, and blue at a pair of U18 Women's World Championships. In 2014 in Hungary, she had two assists as the U.S. won silver, and in 2015 in Buffalo, the U.S. won gold with Samoskevich scoring six goals including a hat trick against Russia and two goals in a semifinal win over the Czech Republic.

After graduating from Quinnipiac in 2019 with a history degree, Samoskevich began her professional career by playing part of the 2019-20 season professionally in Sweden with Brynäs IF. Later that season, she returned to the U.S. to play first with the PWHPA's New England team and then with her home-state Connecticut Whale in the NWHL/PHF.

### TAYLOR WILLARD



Willard joined the Delaware coaching staff as an assistant coach in 2025 ahead of the program's inaugural season.

Willard came to Newark after spending four seasons as an assistant coach at Norwich University where she coached 27 all-conference selections, two NEHC Rookie of the Year recipients and

Livia Brooks became the first player in program history to win NEHC Player and Rookie of the Year honors in 2023-24. The Cadets were NEHC Championship in 2022-23 to earn a berth in the NCAA Tournament and won consecutive NEHC regular season championships in 2023-24 and 2024-25. Over Willard's four seasons, Norwich either ranked or receiving votes in all but two USCHO Division III Top-15 Women's Polls.

In 2024-25, Willard guided the team's defense that ranked ninth nationally in scoring defense (1.19 goals/game) and second with 11 shutouts. She also led the penalty-killing unit that had a 92.9-percent success rate.

Willard's penalty killers set a program record in 2023-24 by killing 95.3-percent of penalties, which led the entire nation. The scoring defense (0.93) was second in the country, and recorded 10 team shutouts.

Willard began her coaching career as a volunteer assistant coach for two seasons at her alma mater, the University of Vermont, helping lead the Catamounts to back-to-back Hockey East Quarterfinal appearances.

A two-time team captain at Vermont, Willard ranks among the program's top 10 for career games played (145), points (62), assists (41) and power-play goals (12). Her 62 points was the most by a Vermont defenseman.

Willard was a two-time Hockey East Second Team All-Star (2015-16, 2016-17) and an honorable mention all-star in 2017-18. She was named to the New England Hockey Writers Association Division I All-Star (2016-17). Willard also won the 2018 Sarah Devens Award, presented annually to a player who "demonstrates leadership and commitment on and off the ice."

Willard played professionally for the Montreal Canadiens (2018-19) in the Canadian Women's Hockey League. She registered seven points (two goals, five assists) in 26 games. Willard was also a member of Team USA at the 2013 U18 Women's World Championships where she picked up three assists in five games and won a silver medal.

### MICHEL LAROCQUE



Larocque joined the University of Delaware in August 2025 ahead of the program's inaugural season as the team's volunteer goalie coach.

A USA Hockey Level 5 Certified Coach and Gold Level Goaltending Coach, Larocque has run his own goaltender training

company – ML28 Hockey – since 2001. He has worked with goalies of all levels as a regional goalie coach for club and scholastic programs as well as organizing camps, clinics and private lessons across multiple age ranges.

Larocque had a distinguished collegiate career at Boston University where he played 97 career games from 1995 to 1999, helping lead the Terriers to the 1997 Hockey East championship, four-straight Beanpot titles, and three NCAA Tournament appearances including an appearance in the 1997 national championship game where he made 24 saves. Larocque was a two-time All-Hockey East selection and was an All-American in 1999 as well as a Hobey Baker finalist. He also was the 1997 Hockey East Tournament MVP and selected to the 1996 Hockey East All-Rookie Team.

Originally drafted by the San Jose Sharks in the sixth round of the 1996 NHL Draft, Larocque was traded to the Chicago Blackhawks in 1999. He made his NHL debut in 2001 against Philadelphia and played in three games for the Blackhawks.

## SUPPORT STAFF

**Jack Davis**

**Devon Cummings**

**Alex Davisson**

**Dr. Clare Devine**

Sport Administrator

Academic Advisor

Athletic Trainer

Sport Psychologist

**Austin Mark**

**Jake Prettyman**

**Brendan Thomas**

**Kate Winstanley**

Team Nutritionist

Equipment Manager

Athletic Communications

Strength & Conditioning Coach

# CAREER STATS AND HIGHS

## 1 • MATTIE ROBITZER

G • Jr. • 5-4  
Kennett Square, Pa. / Unionville (Northeastern)

ROBITZER, Mattie																
SEASON	TEAM	GP	G.	A	Points	Shots	Shot%	Pen-Min	+/-	PPG	SHG	GWG	Bik	FOW	FOL	FO%
2023-24	NE	1	0	0	0	0	.000	0 - 0	0	0	0	0	0	0	0	.000
2024-25	NE	3	0	0	0	0	.000	0 - 0	0	0	0	0	0	0	0	.000
2025-26	UD	7	0	0	0	0	.000	0 - 0	0	0	0	0	0	0	0	.000
TOTAL FOR UD		7	0	0	0	0	.000	0 - 0	0	0	0	0	0	0	0	.000
TOTAL		11	0	0	0	0	.000	0 - 0	0	0	0	0	0	0	0	.000

SEASON	TEAM	GP-GS	Minutes	GA	GAAvg	Saves	Save%	W	L	T	Sho	PPG	SHG
2023-24	NE	1 - 0	0	0	0	0	.000	0	0	0	0	0	0
2024-25	NE	3 - 2	151.5	5	1.99	49	.907	1	1	0	0	1	0
2025-26	UD	7 - 7	420.09	27	3.86	316	.921	0	7	0	0	6	2
TOTAL FOR UD		7 - 7	420.09	27	3.86	316	.921	0	7	0	0	6	2
TOTAL		11 - 9	571.59	32	3.36	365	.919	1	8	0	0	7	2

Single Game Highs	
Statistic	Value
Saves	63 at Mercyhurst 10/31/25

## 2 • LEXIE LONASK

D • Fr. • 5-8  
Chandler, Ariz. / Shattuck St. Mary's [Minn.]

LONASK, Lexie																
SEASON	TEAM	GP	G.	A	Points	Shots	Shot%	Pen-Min	+/-	PPG	SHG	GWG	Bik	FOW	FOL	FO%
2025-26	UD	14	1	3	4	14	.071	1 - 2	-8	0	0	0	71	0	0	.000
TOTAL		14	1	3	4	14	.071	1 - 2	-8	0	0	0	71	0	0	.000

Single Game Highs	
Statistic	Value
Points	1 4 times
Goals	1 at Mercyhurst 10/31/25
Assists	1 vs LIU 09/27/25, vs Holy Cross 10/04/25, vs Holy Cross 10/05/25
Shots	2 5 times
Penalties	1 at Mercyhurst 10/31/25
Penalty minutes	2 at Mercyhurst 10/31/25
Plus/minus	1 vs Syracuse 10/17/25, at Mercyhurst 10/31/25

## 3 • MADISON BONAVIDA

F • Fr. • 6-0  
Longmeadow, Mass. / Milton Academy

BONAVIDA, Maddie																
SEASON	TEAM	GP	G.	A	Points	Shots	Shot%	Pen-Min	+/-	PPG	SHG	GWG	Bik	FOW	FOL	FO%
2025-26	UD	11	0	0	0	3	.000	3 - 6	-10	0	0	0	4	2	1	.667
TOTAL		11	0	0	0	3	.000	3 - 6	-10	0	0	0	4	2	1	.667

Single Game Highs	
Statistic	Value
Shots	1 vs Holy Cross 10/04/25, vs Penn St. 10/10/25, at Mercyhurst 11/01/25
Penalties	1 vs LIU 09/26/25, vs LIU 09/27/25, vs Syracuse 10/17/25
Penalty minutes	2 vs LIU 09/26/25, vs LIU 09/27/25, vs Syracuse 10/17/25
Plus/minus	1 vs LIU 09/27/25

## 4 • TIANA MCINTYRE

D • Sr. • 5-8  
Park City, Utah / Park City (Quinnipiac)

MCINTYRE, Tiana																
SEASON	TEAM	GP	G.	A	Points	Shots	Shot%	Pen-Min	+/-	PPG	SHG	GWG	Bik	FOW	FOL	FO%
2022-23	QU	8	0	0	0	0	.000	0 - 0	0	0	0	0	0	0	0	.000
2023-24	QU	26	0	2	2	13	.000	5 - 10	6	0	0	0	8	0	0	.000
2024-25	QU	33	0	0	0	21	.000	0 - 0	0	0	0	0	16	0	0	.000
2025-26	UD	14	1	2	3	9	.111	3 - 6	-18	0	0	0	17	0	0	.000
TOTAL FOR UD		14	1	2	3	9	.111	3 - 6	-18	0	0	0	17	0	0	.000
TOTAL		81	1	4	5	43	.023	8 - 16	-12	0	0	0	41	0	0	.000

Single Game Highs	
Statistic	Value
Points	1 5 times
Goals	1 at Brown 11/09/25
Assists	1 4 times
Shots	3 at Harvard 11/09/24, at Brown 11/09/25
Penalties	3 vs Rensselaer 12/02/23
Penalty minutes	6 vs Rensselaer 12/02/23
Plus/minus	2 at Harvard 01/12/24

-- -- -- -- --

## 5 • EMMA MACINTYRE

D • Fr. • 5-4  
Halifax, Nova Scotia / Stanstead College

MACINTYRE, Emma																
SEASON	TEAM	GP	G.	A	Points	Shots	Shot%	Pen-Min	+/-	PPG	SHG	GWG	Bik	FOW	FOL	FO%
2025-26	UD	11	0	1	1	10	.000	4 - 8	-15	0	0	0	32	0	0	.000
TOTAL		11	0	1	1	10	.000	4 - 8	-15	0	0	0	32	0	0	.000

Single Game Highs	
Statistic	Value
Points	1 vs Holy Cross 10/05/25
Assists	1 vs Holy Cross 10/05/25
Shots	3 at Brown 11/08/25
Penalties	2 vs Penn St. 10/11/25
Penalty minutes	4 vs Penn St. 10/11/25

## 6 • KACEY BLUM

F • Fr. • 5-6  
McLean, Va. / McLean

BLUM, Kacey																
SEASON	TEAM	GP	G.	A	Points	Shots	Shot%	Pen-Min	+/-	PPG	SHG	GWG	Bik	FOW	FOL	FO%
2025-26	UD	13	0	0	0	9	.000	1 - 2	-6	0	0	0	3	0	0	.000
TOTAL		13	0	0	0	9	.000	1 - 2	-6	0	0	0	3	0	0	.000

Single Game Highs	
Statistic	Value
Shots	2 vs LIU 09/26/25, vs Holy Cross 10/04/25, vs Syracuse 10/17/25
Penalties	1 at Brown 11/09/25
Penalty minutes	2 at Brown 11/09/25
Plus/minus	1 at Brown 11/09/25

## 8 • VICTORIA BORG

F • Fr. • 5-4  
Burlington, Ontario / Blyth Academy

BORG, Victoria																
SEASON	TEAM	GP	G.	A	Points	Shots	Shot%	Pen-Min	+/-	PPG	SHG	GWG	Bik	FOW	FOL	FO%
2025-26	UD	14	0	0	0	9	.000	3 - 6	-7	0	0	0	8	0	0	.000
TOTAL		14	0	0	0	9	.000	3 - 6	-7	0	0	0	8	0	0	.000

Single Game Highs	
Statistic	Value
Shots	2 vs Holy Cross 10/04/25, at Mercyhurst 10/31/25
Penalties	1 vs LIU 09/26/25, vs Syracuse 10/17/25, vs Robert Morris 10/25/25
Penalty minutes	2 vs LIU 09/26/25, vs Syracuse 10/17/25, vs Robert Morris 10/25/25
Plus/minus	1 vs Holy Cross 10/05/25

## 9 • BAILEY GRAY

D • Fr. • 5-4  
Plymouth, Minn. / Benilde-St. Margaret's

GRAY, Bailey																
SEASON	TEAM	GP	G.	A	Points	Shots	Shot%	Pen-Min	+/-	PPG	SHG	GWG	Bik	FOW	FOL	FO%
2025-26	UD	13	0	1	1	18	.000	9 - 29	-12	0	0	0	39	0	0	.000
TOTAL		13	0	1	1	18	.000	9 - 29	-12	0	0	0	39	0	0	.000

Single Game Highs	
Statistic	Value
Points	1 vs Holy Cross 10/05/25
Assists	1 vs Holy Cross 10/05/25
Shots	4 vs LIU 09/27/25
Penalties	2 at Mercyhurst 10/31/25
Penalty minutes	15 at Mercyhurst 10/31/25
Plus/minus	1 vs LIU 09/26/25

# CAREER STATS AND HIGHS

## 10 • DANICA MARK

F • Jr. • 5-7

Duluth, Minn. / Duluth Marshall School (Union)

### MARK, Danica

SEASON	TEAM	GP	G	A	Points	Shots	Shot%	Pen-Min	+/-	PPG	SHG	GWG	Bik	FOW	FOL	FO%
2023-24	UNI	8	0	0	0	4	.000	1 - 2	0	0	0	0	2	16	19	.457
2024-25	UNI	9	1	2	3	10	.100	2 - 4	1	0	0	0	2	18	20	.474
2025-26	UD	14	0	0	0	13	.000	0 - 0	-11	0	0	0	17	32	59	.352
<b>TOTAL FOR UD</b>	<b>14</b>	<b>0</b>	<b>0</b>	<b>0</b>	<b>13</b>	<b>.000</b>	<b>0 - 0</b>	<b>-11</b>	<b>0</b>	<b>0</b>	<b>0</b>	<b>0</b>	<b>17</b>	<b>32</b>	<b>59</b>	<b>.352</b>
<b>TOTAL</b>	<b>31</b>	<b>1</b>	<b>2</b>	<b>3</b>	<b>27</b>	<b>.037</b>	<b>3 - 6</b>	<b>-10</b>	<b>0</b>	<b>0</b>	<b>0</b>	<b>0</b>	<b>21</b>	<b>66</b>	<b>98</b>	<b>.402</b>

### Single Game Highs

Statistic	Value
Points	1 vs RIT 10/04/24, vs RIT 10/05/24, vs Princeton 01/04/25
Goals	1 vs Princeton 01/04/25
Assists	1 vs RIT 10/04/24, vs RIT 10/05/24
Shots	4 vs RIT 10/04/24
Penalties	1 vs Holy Cross 10/07/23, at Robert Morris 09/27/24, at Vermont 11/20/24
Penalty minutes	2 vs Holy Cross 10/07/23, at Robert Morris 09/27/24, at Vermont 11/20/24
Plus/minus	1 4 times

## 11 • CHARLIE VOGUE

F • Fr. • 5-6

Sun Prairie, Wisc. / St. Paul's School

### VOGE, Charlotte

SEASON	TEAM	GP	G	A	Points	Shots	Shot%	Pen-Min	+/-	PPG	SHG	GWG	Bik	FOW	FOL	FO%
2025-26	UD	14	0	0	0	4	.000	3 - 6	-2	0	0	0	3	0	2	.000
<b>TOTAL</b>	<b>14</b>	<b>0</b>	<b>0</b>	<b>0</b>	<b>4</b>	<b>.000</b>	<b>3 - 6</b>	<b>-2</b>	<b>0</b>	<b>0</b>	<b>0</b>	<b>0</b>	<b>3</b>	<b>0</b>	<b>2</b>	<b>.000</b>

### Single Game Highs

Statistic	Value
Shots	1 4 times
Penalties	1 vs Holy Cross 10/04/25, vs Robert Morris 10/25/25, at Mercyhurst 10/31/25
Penalty minutes	2 vs Holy Cross 10/04/25, vs Robert Morris 10/25/25, at Mercyhurst 10/31/25
Plus/minus	1 vs LIU 09/27/25, vs Holy Cross 10/05/25

## 13 • KAITLIN FINNEGAN

F • Gr. • 5-4

Tecumseh, Kan. / Kansas Connections Academy (Lindenwood)

### FINNEGAN, Kaitlin

SEASON	TEAM	GP	G	A	Points	Shots	Shot%	Pen-Min	+/-	PPG	SHG	GWG	Bik	FOW	FOL	FO%
2020-21	Linden	14	0	1	1	9	.000	5 - 10	-3	0	0	0	5	12	34	.261
2021-22	Linden	26	1	5	6	28	.036	1 - 2	-22	0	0	0	8	77	112	.407
2022-23	Linden	32	3	2	5	48	.063	3 - 6	-15	0	0	0	25	20	31	.392
2023-24	Linden	31	3	8	11	42	.071	8 - 16	-15	1	0	0	17	3	9	.250
2024-25	Linden	4	0	0	0	0	.000	2 - 4	-3	0	0	0	1	1	0	1.000
2025-26	UD	14	2	3	5	25	.080	1 - 2	-3	0	0	0	34	6	12	.333
<b>TOTAL FOR UD</b>	<b>14</b>	<b>2</b>	<b>3</b>	<b>5</b>	<b>25</b>	<b>.080</b>	<b>1 - 2</b>	<b>-3</b>	<b>0</b>	<b>0</b>	<b>0</b>	<b>0</b>	<b>34</b>	<b>6</b>	<b>12</b>	<b>.333</b>
<b>TOTAL</b>	<b>121</b>	<b>9</b>	<b>19</b>	<b>28</b>	<b>152</b>	<b>.059</b>	<b>20 - 40</b>	<b>-61</b>	<b>1</b>	<b>0</b>	<b>0</b>	<b>0</b>	<b>90</b>	<b>119</b>	<b>198</b>	<b>.375</b>

### Single Game Highs

Statistic	Value
Points	2 4 times
Goals	1 9 times
Assists	2 at Brown 11/09/25, vs Mercyhurst 12/01/23
Shots	6 vs LIU 09/26/25
Power-play Goals	1 vs Robert Morris 02/17/24
Penalties	2 vs Stonehill 11/25/23, vs St. Cloud St. 09/21/24, at RIT 01/11/21
Penalty minutes	4 vs Stonehill 11/25/23, vs St. Cloud St. 09/21/24, at RIT 01/11/21
Plus/minus	3 at RIT 10/27/23

## 15 • WREN ABBOUD

F • Fr. • 5-2

Weymouth, Mass. / Thayer Academy

### ABBOUD, Wren

SEASON	TEAM	GP	G	A	Points	Shots	Shot%	Pen-Min	+/-	PPG	SHG	GWG	Bik	FOW	FOL	FO%
2025-26	UD	14	0	0	0	5	.000	5 - 10	-8	0	0	0	5	29	39	.426
<b>TOTAL</b>	<b>14</b>	<b>0</b>	<b>0</b>	<b>0</b>	<b>5</b>	<b>.000</b>	<b>5 - 10</b>	<b>-8</b>	<b>0</b>	<b>0</b>	<b>0</b>	<b>0</b>	<b>5</b>	<b>29</b>	<b>39</b>	<b>.426</b>

### Single Game Highs

Statistic	Value
Shots	2 at Mercyhurst 10/31/25
Penalties	1 5 times
Penalty minutes	2 5 times

## 16 • EVA MAYO

F/D • Fr. • 5-6

Honeoye Falls, N.Y. / Kent School

### MAYO, Eva

SEASON	TEAM	GP	G	A	Points	Shots	Shot%	Pen-Min	+/-	PPG	SHG	GWG	Bik	FOW	FOL	FO%
2025-26	UD	14	0	0	0	7	.000	5 - 10	-4	0	0	0	17	0	0	.000
<b>TOTAL</b>	<b>14</b>	<b>0</b>	<b>0</b>	<b>0</b>	<b>7</b>	<b>.000</b>	<b>5 - 10</b>	<b>-4</b>	<b>0</b>	<b>0</b>	<b>0</b>	<b>0</b>	<b>17</b>	<b>0</b>	<b>0</b>	<b>.000</b>

### Single Game Highs

Statistic	Value
Shots	2 at Brown 11/08/25
Penalties	1 5 times
Penalty minutes	2 5 times
Plus/minus	1 vs LIU 09/27/25, vs Holy Cross 10/04/25, at Brown 11/09/25

## 17 • SUVINA HEIDT

D • Fr. • 5-6

Aurora, Colo. / Winchendon School [Mass.]

### HEIDT, Suvina

SEASON	TEAM	GP	G	A	Points	Shots	Shot%	Pen-Min	+/-	PPG	SHG	GWG	Bik	FOW	FOL	FO%
2025-26	UD	11	0	0	0	1	.000	2 - 4	-9	0	0	0	14	0	0	.000
<b>TOTAL</b>	<b>11</b>	<b>0</b>	<b>0</b>	<b>0</b>	<b>1</b>	<b>.000</b>	<b>2 - 4</b>	<b>-9</b>	<b>0</b>	<b>0</b>	<b>0</b>	<b>0</b>	<b>14</b>	<b>0</b>	<b>0</b>	<b>.000</b>

### Single Game Highs

Statistic	Value
Shots	1 vs Syracuse 10/18/25
Penalties	2 vs Syracuse 10/18/25
Penalty minutes	4 vs Syracuse 10/18/25
Plus/minus	1 at Mercyhurst 10/31/25

## 18 • FRANCESCA BARRESI

F • Fr. • 5-6

Ottawa, Ontario / St. Joseph Catholic

### BARRESI, Francesca

SEASON	TEAM	GP	G	A	Points	Shots	Shot%	Pen-Min	+/-	PPG	SHG	GWG	Bik	FOW	FOL	FO%
2025-26	UD	14	1	0	1	22	.045	1 - 2	-20	0	0	0	26	68	87	.439
<b>TOTAL</b>	<b>14</b>	<b>1</b>	<b>0</b>	<b>1</b>	<b>22</b>	<b>.045</b>	<b>1 - 2</b>	<b>-20</b>	<b>0</b>	<b>0</b>	<b>0</b>	<b>0</b>	<b>26</b>	<b>68</b>	<b>87</b>	<b>.439</b>

### Single Game Highs

Statistic	Value
Points	1 vs LIU 09/26/25
Goals	1 vs LIU 09/26/25
Shots	3 vs Syracuse 10/18/25, vs Robert Morris 10/24/25, at Mercyhurst 11/01/25
Penalties	1 vs LIU 09/26/25
Penalty minutes	2 vs LIU 09/26/25
Plus/minus	1 at Mercyhurst 10/31/25

## 19 • KATELYNN CHARLTON

F • Fr. • 5-7

Brampton, Ontario / St. Martins Catholic Secondary

### CHARLTON, Katelynn

SEASON	TEAM	GP	G	A	Points	Shots	Shot%	Pen-Min	+/-	PPG	SHG	GWG	Bik	FOW	FOL	FO%
2025-26	UD	14	4	2	6	51	.078	3 - 6	-10	1	0	1	5	1	1	.500
TOTAL		14	4	2	6	51	.078	3 - 6	-10	1	0	1	5	1	1	.500

### Single Game Highs

Statistic	Value
Points	2 vs Holy Cross 10/04/25
Goals	2 vs Holy Cross 10/04/25
Assists	1 vs Syracuse 10/17/25, vs LIU 09/27/25
Shots	8 at Brown 11/08/25
Power-play Goals	1 vs Holy Cross 10/05/25
Penalties	1 vs Penn St. 10/11/25, at Brown 11/09/25, vs Robert Morris 10/25/25
Penalty minutes	2 vs Penn St. 10/11/25, at Brown 11/09/25, vs Robert Morris 10/25/25
Plus/minus	1 at Mercyhurst 10/31/25

# CAREER STATS AND HIGHS

## 20 • MEERA SMITH

F • Fr. • 5-6

Victoria, British Columbia / Shawnigan Lake School

### SMITH, Meera

SEASON	TEAM	GP	G.	A	Points	Shots	Shot%	Pen-Min	+/-	PPG	SHG	GWG	Blk	FOW	FOL	FO%
2025-26	UD	14	1	1	2	9	.111	4 - 8	-9	0	0	0	14	99	174	.363
<b>TOTAL</b>		<b>14</b>	<b>1</b>	<b>1</b>	<b>2</b>	<b>9</b>	<b>.111</b>	<b>4 - 8</b>	<b>-9</b>	<b>0</b>	<b>0</b>	<b>0</b>	<b>14</b>	<b>99</b>	<b>174</b>	<b>.363</b>

### Single Game Highs

Statistic	Value
Points	1 vs Holy Cross 10/05/25, at Mercyhurst 10/31/25
Goals	1 vs Holy Cross 10/05/25
Assists	1 at Mercyhurst 10/31/25
Shots	2 vs Syracuse 10/17/25, vs Robert Morris 10/24/25
Penalties	2 at Mercyhurst 11/01/25
Penalty minutes	4 at Mercyhurst 11/01/25
Plus/minus	1 at Brown 11/09/25

## 21 • BILLI ROMAN

F • Fr. • 5-3

Hockessin, Del. / The Tatnall School

### ROMAN, Billi

SEASON	TEAM	GP	G.	A	Points	Shots	Shot%	Pen-Min	+/-	PPG	SHG	GWG	Blk	FOW	FOL	FO%
2025-26	UD	14	2	0	2	9	.222	2 - 4	-4	0	0	0	10	17	47	.266
<b>TOTAL</b>		<b>14</b>	<b>2</b>	<b>0</b>	<b>2</b>	<b>9</b>	<b>.222</b>	<b>2 - 4</b>	<b>-4</b>	<b>0</b>	<b>0</b>	<b>0</b>	<b>10</b>	<b>17</b>	<b>47</b>	<b>.266</b>

### Single Game Highs

Statistic	Value
Points	1 vs LIU 09/27/25, at Mercyhurst 10/31/25
Goals	1 vs LIU 09/27/25, at Mercyhurst 10/31/25
Shots	3 vs LIU 09/27/25
Penalties	1 vs Penn St. 10/11/25, at Brown 11/08/25
Penalty minutes	2 vs Penn St. 10/11/25, at Brown 11/08/25
Plus/minus	1 vs LIU 09/27/25, at Mercyhurst 10/31/25, at Brown 11/09/25

## 24 • TAYLOR SCHOOLEY

D • Gr. • 5-6

Moon Township, Pa. / Moon Area

### SCHOOLEY, Taylor

SEASON	TEAM	GP	G.	A	Points	Shots	Shot%	Pen-Min	+/-	PPG	SHG	GWG	Blk	FOW	FOL	FO%
2025-26	UD	11	0	1	1	0	.000	2 - 4	-5	0	0	0	7	0	0	.000
<b>TOTAL</b>		<b>11</b>	<b>0</b>	<b>1</b>	<b>1</b>	<b>0</b>	<b>.000</b>	<b>2 - 4</b>	<b>-5</b>	<b>0</b>	<b>0</b>	<b>0</b>	<b>7</b>	<b>0</b>	<b>0</b>	<b>.000</b>

### Single Game Highs

Statistic	Value
Points	1 at Brown 11/09/25
Assists	1 at Brown 11/09/25
Penalties	1 vs Syracuse 10/18/25, vs Robert Morris 10/24/25
Penalty minutes	2 vs Syracuse 10/18/25, vs Robert Morris 10/24/25
Plus/minus	1 at Brown 11/09/25

## 27 • IDA HAAVE

F • Fr. • 5-6

Kristiansand, Norway / Norges Toppidrettsgymnas Lillehammer

### HAAVE, Ida

SEASON	TEAM	GP	G.	A	Points	Shots	Shot%	Pen-Min	+/-	PPG	SHG	GWG	Blk	FOW	FOL	FO%
2025-26	UD	14	0	1	1	11	.000	1 - 2	-7	0	0	0	22	84	117	.418
<b>TOTAL</b>		<b>14</b>	<b>0</b>	<b>1</b>	<b>1</b>	<b>11</b>	<b>.000</b>	<b>1 - 2</b>	<b>-7</b>	<b>0</b>	<b>0</b>	<b>0</b>	<b>22</b>	<b>84</b>	<b>117</b>	<b>.418</b>

### Single Game Highs

Statistic	Value
Points	1 at Mercyhurst 10/31/25
Assists	1 at Mercyhurst 10/31/25
Shots	3 vs LIU 09/27/25, vs LIU 09/26/25
Penalties	1 vs Robert Morris 10/24/25
Penalty minutes	2 vs Robert Morris 10/24/25
Plus/minus	1 at Mercyhurst 10/31/25, vs Syracuse 10/17/25

## 31 • CHARLOTTE PAYNE

G • Fr. • 5-8

Oakville, Ontario / Abbey Park

### PAYNE, Charlotte

SEASON	TEAM	GP	G.	A	Points	Shots	Shot%	Pen-Min	+/-	PPG	SHG	GWG	Blk	FOW	FOL	FO%
2025-26	UD	7	0	0	0	0	.000	0 - 0	0	0	0	0	0	0	0	.000
<b>TOTAL</b>		<b>7</b>	<b>0</b>	<b>0</b>	<b>0</b>	<b>0</b>	<b>.000</b>	<b>0 - 0</b>	<b>0</b>	<b>0</b>	<b>0</b>	<b>0</b>	<b>0</b>	<b>0</b>	<b>0</b>	<b>.000</b>

SEASON	TEAM	GP-GS	Minutes	GA	GAAvg	Saves	Save%	W	L	T	Sho	PPG	SHG
2025-26	UD	7 - 7	424.65	23	3.25	309	.931	1	6	0	0	1	1
<b>TOTAL</b>		<b>7 - 7</b>	<b>424.65</b>	<b>23</b>	<b>3.25</b>	<b>309</b>	<b>.931</b>	<b>1</b>	<b>6</b>	<b>0</b>	<b>0</b>	<b>1</b>	<b>1</b>

### Single Game Highs

Statistic	Value
Saves	51 vs Penn St. 10/10/25, at Brown 11/09/25

## 35 • SYDNEY BUTLER

G • Sr. • 5-6

Darien, Conn. / AITE



delaware

# STARTERS BY GAME

	LEFT WING	CENTER	RIGHT WING	LEFT DEFENSE	RIGHT DEFENSE	GOALIE
LIU	Charlton	Haave	Finnegan	McIntyre	MacIntyre	Robitzer
LIU	Borg	Smith	Barresi	McIntyre	MacIntyre	Payne
Holy Cross	Charlton	Haave	Finnegan	Gray	Lonask	Robitzer
Holy Cross	Borg	Smith	Barresi	McIntyre	Lonask	Payne
Penn State	Charlton	Haave	Finnegan	McIntyre	Lonask	Payne
Penn State	Charlton	Haave	Finnegan	Gray	MacIntyre	Robitzer
Syracuse	Charlton	Haave	Finnegan	McIntyre	Lonask	Payne
Syracuse	Charlton	Haave	Finnegan	McIntyre	Lonask	Robitzer
Robert Morris	Charlton	Barresi	Finnegan	McIntyre	Lonask	Payne
Robert Morris	Borg	Smith	Haave	McIntyre	Lonask	Robitzer
@ Mercyhurst	Charlton	Barresi	Finnegan	McIntyre	Lonask	Robitzer
@ Mercyhurst	Borg	Smith	Haave	McIntyre	Lonask	Payne
@ Brown	Charlton	Barresi	Finnegan	McIntyre	Lonask	Robitzer
@ Brown	Borg	Smith	Voge	McIntyre	Lonask	Payne

Lindenwood

Lindenwood

@ Union

@ Union

@ RIT

@ RIT

@ Syracuse

@ Syracuse

RIT

RIT

@ Lindenwood

@ Lindenwood

@ Penn State

@ Penn State

Mercyhurst

Mercyhurst

@ Robert Morris

@ Robert Morris

delaware

# GAME-BY-GAME STATISTICAL LEADERS

OPP	GOALS	ASSISTS	SOG	BLOCKS	FO WINS	SAVES
LIU	Barresi (1)	--	Finnegan (6)	7 players (2)	Haave (15)	Robitzer (27)
LIU	Finnegan/Roman (1)	Charlton/Lonask/McIntyre (1)	Charlton (7)	Lonask/MacIntyre (2)	Smith (12)	Payne (22)
Holy Cross	Charlton (2)	Finnegan/Lonask (1)	Charlton (3)	Finnegan/Lonask (5)	Haave (11)	Robitzer (57)
Holy Cross	Smith/Charlton (1)	MacIntyre/Gray/Lonask (1)	Barresi/Charlton/Roman (2)	MacIntyre (5)	Haave (11)	Payne (49)
Penn State	--	--	10 players (1)	Lonask/Gray/Barresi (4)	Haave (13)	Payne (51)
Penn State	--	--	Charlton (1)	Lonask/Barresi (5)	Smith (12)	Robitzer (62)
Syracuse	Finnegan (1)	Charlton (1)	Gray (3)	Gray (4)	Smith (9)	Payne (48)
Syracuse	--	--	Mark/Barresi (3)	Lonask (6)	Smith/Haave (6)	Robitzer (30)
Robert Morris	--	--	Barresi (3)	Lonask (4)	Barresi (12)	Payne (38)
Robert Morris	--	--	Charlton (6)	Gray (3)	Barresi (13)	Robitzer (43)
@ Mercyhurst	Roman/Lonask (1)	Haave/Smith/McIntyre (1)	Charlton (3)	Lonask (10)	Barresi (13)	Robitzer (63)
@ Mercyhurst	--	--	Finnegan/Barresi (3)	Lonask (9)	Abboud (4)	Payne (50)
@ Brown	--	--	Charlton (8)	Gray (5)	Barresi (8)	Robitzer (34)
@ Brown	McIntyre/Charlton (1)	Finnegan (2)	Charlton (4)	Lonask (11)	Barresi (8)	Payne (51)

Lindenwood

Lindenwood

@ Union

@ Union

@ RIT

@ RIT

@ Syracuse

@ Syracuse

RIT

RIT

@ Lindenwood

@ Lindenwood

@ Penn State

@ Penn State

Mercyhurst

Mercyhurst

@ Robert Morris

@ Robert Morris

delaware

# SCORING PLAYS

DATE	OPPONENT	Goal Type	GOAL SCORER	ASSIST(S)	TIME & PERIOD	SCORE
9/26/25	LIU	Even	Barresi (1)	--	12:04, 3rd period	2-1, LIU
9/27/25	LIU	Even	Finnegan (1)	Charlton (1)	9:53, 1st period	1-0, UD
9/27/25	LIU	Even	Roman (1)	Lonask (1), McIntyre (1)	10:31, 2nd period	2-0, UD
10/4/25	Holy Cross	Even	Charlton (1)	Finnegan (1)	7:52, 2nd period	1-0, UD
10/4/25	Holy Cross	Even	Charlton (2)	Lonask (2)	17:44, 2nd period	2-1, UD
10/5/25	Holy Cross	Even	Smith (1)	MacIntyre (1)	5:52, 2nd period	1-1
10/5/25	Holy Cross	Power Play	Charlton (3)	Gray (1), Lonask (3)	9:49, 2nd period	2-1, UD
10/17/25	Syracuse	Even	Finnegan (2)	Charlton (2)	11:42, 2nd period	1-1
10/31/25	@RV/RV Mercyhurst	Even	Roman (2)	Haave (1)	11:03, 2nd period	1-1
10/31/25	@RV/RV Mercyhurst	6-5	Lonask (1)	Smith (1), McIntyre (2)	19:57, 3rd period	2-2
11/9/25	@15/15 Brown	Even	McIntyre (1)	Finnegan (2)	5:31, 2nd period	2-1 Brown
11/9/25	@15/15 Brown	Even	Charlton (4)	Finnegan (3), Schooley (1)	15:05 2nd period	2-2



# delaware SEASON STATS



## 2025-26 Delaware Women's Ice Hockey Combined Team Statistics All games

Page 1/1  
as of Nov 12, 2025

### Team Results

Date	Opponent	Score	Att.
09/26/2025	LIU	L 1-4	752
09/27/2025	LIU	L 2-5	336
10/04/2025	Holy Cross	L 2-5	363
10/05/2025	Holy Cross	W 2-1	246
* 10/10/2025	Penn St.	L 0-5	373
* 10/11/2025	Penn St.	L 0-7	350
* 10/17/2025	Syracuse	Lot 1-2	292
* 10/18/2025	Syracuse	L 0-1	236
* 10/24/2025	Robert Morris	L 0-5	247
* 10/25/2025	Robert Morris	L 0-5	296
* 10/31/2025	at Mercyhurst	Lot 2-3	376
* 11/01/2025	at Mercyhurst	L 0-4	245
11/08/2025	at Brown	L 0-3	387
11/09/2025	at Brown	Lot 2-3	211

### Team Statistics

	UD	OPP
<b>SHOT STATISTICS</b>		
Goals-Shot attempts	12-229	53-678
Shot pct.	.052	.078
Goals/Game	0.86	3.79
Shots/Game	16.36	48.43
<b>POWER PLAYS</b>		
Goals-Power Plays	1-57	7-46
Conversion pct.	.018	.152
Shot Attempts	62	113
Shot pct.	.016	.062
<b>SHORT-HANDED</b>		
Goals-Shot attempts	0-2	3-17
Shot pct.	.000	.176
<b>GOAL BREAKDOWN</b>		
Power Play	1	7
Short-handed	0	3
Empty net	0	3
Penalty	0	0
Unassisted	1	10
Overtime	0	3
Delayed Penalty	0	0
Game winning	1	13
First Goal	2	12
Game Tying Goal	0	0
Extra Attacker	1	0
<b>BLOCKS</b>		
Blocks	348	98
Blocks/Game	24.86	7.00
<b>PENALTIES</b>		
Number	53	62
Minutes	117	124
Penalties/Game	3.79	4.43
Pen minutes/Game	8.36	8.86
<b>FACEOFFS (W-L)</b>		
Faceoff W-L pct.	338-539	539-338
	.385	.615
<b>SHOOTOUTS (Made-Att)</b>		
	0-0	0-0

### Game Records

Record	Overall	Home	Away	Neutral
ALL GAMES	1-13-0	1-9-0	0-4-0	0-0-0
CONFERENCE	0-8-0	0-6-0	0-2-0	0-0-0
NON-CONFERENCE	1-5-0	1-3-0	0-2-0	0-0-0

# Player	GP	G	A	PTS	SH	SH%	PEN-MIN	PP SH	BLK	FOW	FOL	FO%
19 Charlton, Katelynn	14	4	2	6	51	.078	3-6	1 0	5	1	1	.500
13 Finnegan, Kaitlin	14	2	3	5	25	.080	1-2	0 0	34	6	12	.333
2 Lonask, Lexie	14	1	3	4	14	.071	1-2	0 0	71	0	0	.000
4 McIntyre, Tiana	14	1	2	3	9	.111	3-6	0 0	17	0	0	.000
21 Roman, Billi	14	2	0	2	9	.222	2-4	0 0	10	17	47	.266
20 Smith, Meera	14	1	1	2	9	.111	4-8	0 0	14	99	174	.363
18 Barresi, Francesca	14	1	0	1	22	.045	1-2	0 0	26	68	87	.439
9 Gray, Bailey	13	0	1	1	18	.000	9-29	0 0	39	0	0	.000
27 Haave, Ida	14	0	1	1	11	.000	1-2	0 0	22	84	117	.418
5 MacIntyre, Emma	11	0	1	1	10	.000	4-8	0 0	32	0	0	.000
24 Schooley, Taylor	11	0	1	1	0	.000	2-4	0 0	7	0	0	.000
10 Mark, Danica	14	0	0	0	13	.000	0-0	0 0	17	32	59	.352
8 Borg, Victoria	14	0	0	0	9	.000	3-6	0 0	8	0	0	.000
6 Blum, Kacey	13	0	0	0	9	.000	1-2	0 0	3	0	0	.000
16 Mayo, Eva	14	0	0	0	7	.000	5-10	0 0	17	0	0	.000
15 Abboud, Wren	14	0	0	0	5	.000	5-10	0 0	5	29	39	.426
11 Voge, Charlotte	14	0	0	0	4	.000	3-6	0 0	3	0	2	.000
3 Bonavita, Maddie	11	0	0	0	3	.000	3-6	0 0	4	2	1	.667
17 Heidt, Suvina	11	0	0	0	1	.000	2-4	0 0	14	0	0	.000
31 Payne, Charlotte	7	0	0	0	0	.000	0-0	0 0	0	0	0	.000
1 Robitzer, Mattie	7	0	0	0	0	.000	0-0	0 0	0	0	0	.000
TM TEAM	14	0	0	0	0	.000	0-0	0 0	0	0	0	.000
<b>Totals</b>	<b>14</b>	<b>12</b>	<b>15</b>	<b>27</b>	<b>229</b>	<b>.052</b>	<b>53-117</b>	<b>1 0</b>	<b>348</b>	<b>338</b>	<b>539</b>	<b>.385</b>
<b>Opponents</b>	<b>14</b>	<b>53</b>	<b>74</b>	<b>127</b>	<b>678</b>	<b>.078</b>	<b>62-124</b>	<b>7 3</b>	<b>98</b>	<b>539</b>	<b>338</b>	<b>.615</b>

# Player	GP	MIN	GA	GAAVG	SAVES	SAVES%	W-L-T-SHO
31 Payne, Charlotte	7	424:39	23	3.25	309	.931	1-6-0-0
1 Robitzer, Mattie	7	420:05	27	3.86	316	.921	0-7-0-0
TM EMPTY NET	-	05:04	3	35.53	0	.000	0-0-0-0
<b>Totals</b>	<b>14</b>	<b>849:48</b>	<b>53</b>	<b>3.74</b>	<b>625</b>	<b>.922</b>	<b>1-13-0-0</b>
<b>Opponents</b>	<b>14</b>	<b>849:48</b>	<b>12</b>	<b>0.85</b>	<b>217</b>	<b>.948</b>	<b>13-1-0-7</b>

### Attendance Summary

	UD	Opponents
Total	3491	1219
Dates/Avg Per Date	10 / 349	4 / 305
Neutral Site #/Avg	0 / 0	

### Goals by Periods

Team	1st	2nd	3rd	OT	TOTAL
UD	1	9	2	0	12
Opponents	8	21	21	3	53

### Shots by Periods

Team	1st	2nd	3rd	OT	TOTAL
UD	75	68	82	4	229
Opponents	212	243	215	8	678

### Saves by Periods

Team	1st	2nd	3rd	OT	TOTAL
UD	204	222	194	5	625
Opponents	74	59	80	4	217



delaware

## NCAA RANKINGS

Statistic	National Rank	Conference Rank	Value	National Leader	Value	Conference Leader	Value
Assists (45 ranked)	44	7	15	Wisconsin	113	Penn St.	85
Goals (45 ranked)	43	7	12	Wisconsin	64	Penn St.	56
Penalty Killing Pct. (45 ranked)	22	2	0.848	Cornell	1.000	Penn St.	0.921
Power Play Goals (43 ranked)	43	7	1	RIT	17	RIT	17
Power-Play Percentage (45 ranked)	44	7	0.018	Cornell	0.400	RIT	0.340
Scoring Defense (45 ranked)	43	7	3.79	Penn St.	0.67	Penn St.	0.67
Scoring Margin (45 ranked)	45	7	-2.93	Wisconsin	4.25	Penn St.	4.00
Scoring Offense (45 ranked)	45	7	0.86	Wisconsin	5.33	Penn St.	4.67
Short-Handed Goals (6 ranked)				Boston U. Penn St.	3 3	Penn St.	3
Team Assists (0 ranked)							
Team Faceoff win percentage (45 ranked)	44	7	0.385	Ohio St.	0.632	Penn St.	0.611
Team Goals Against Average (30 ranked)				Penn St.	0.667	Penn St.	0.667
Team Penalty Minutes Per Game (45 ranked)	15	3	8.36	Ohio St.	17.50	Robert Morris	11.43
Team Points (45 ranked)	44	7	27	Wisconsin	177	Penn St.	141
Team Saves (45 ranked)	1	1	625	Delaware	625	Delaware	625
Team Shutouts (25 ranked)				Penn St. Wisconsin	7 7	Penn St.	7
Tm. Short-Handed Goals (0 ranked)							
Winning Percentage (45 ranked)	45	7	0.071	Penn St. Cornell	1.000 1.000	Penn St.	1.000

delaware

## NCAA RANKINGS

Statistic	Player	National Rank	Conference Rank	Value	National Leader	Value	Conference Leader	Value
Assists per Game (50 ranked)					Ava Lindsay, Minnesota	1.25	Danica Maynard, Penn St.	0.92
Faceoff wins (245 ranked)	Meera Smith Ida Haave Francesca Barresi Danica Mark Wren Abboud Billi Roman	45 60 85 166 173 200	9 12 20 31 32 36	99 84 68 32 29 17	Jessica MacKinnon, Robert Morris	198	Jessica MacKinnon, Robert Morris	198
Game Winning Goals (11 ranked)					Maddy Christian, Penn St. Kahlen Lamarche, Quinnipiac	4 4	Maddy Christian, Penn St.	4
Goalie Winning Pct. (22 ranked)					Naomi Baechler, Yale Annelies Bergmann, Cornell Katie DeSa, Penn St.	1.000 1.000 1.000	Katie DeSa, Penn St.	1.000
Goals Against Average (25 ranked)					Annelies Bergmann, Cornell	0.715	Katie DeSa, Penn St.	0.800
Goals per Game (48 ranked)					Joy Dunne, Ohio St.	1.50	Grace Outwater, Penn St.	0.83
Penalties (56 ranked)	Bailey Gray Wren Abboud Eva Mayo	5 56 56	2 18 18	9 5 5	Abbey Murphy, Minnesota	14	Charlotte Hallett, Syracuse	10
Points per Game (38 ranked)					Joy Dunne, Ohio St.	2.13	Tessa Janecke, Penn St.	1.60
Power Play Goals (21 ranked)					4 players tied	4	Riley Gramlich, RIT Tessa Janecke, Penn St. Katelyn Roberts, Penn St.	3 3 3
Save Percentage (60 ranked)	Charlotte Payne Mattie Robitzer	23 33	2 6	0.931 0.921	Annelies Bergmann, Cornell	0.972	Katie DeSa, Penn St.	0.947
Short-Handed Goals (1 ranked)					25 players tied	1	6 players tied	1
Shutouts (6 ranked)					Katie DeSa, Penn St. Ava McNaughton, Wisconsin	5 5	Katie DeSa, Penn St.	5

# delaware TV ROSTER



**1**  
**MATTIE ROBITZER**  
Jr.  
G | 5-4  
Kennett Square, Pa.  
Unionville  
(Northeastern)  
@m.robitzer



**2**  
**LEXIE LONASK**  
Fr.  
D | 5-8  
Chandler, Ariz.  
Shattuck St. Mary's  
@lexie.lonask



**3**  
**MADISON BONAVITA**  
Fr.  
F | 6-0  
Longmeadow, Mass.  
Milton Academy  
@bonavita\_maddie



**4**  
**TIANA MCINTYRE**  
Sr.  
D | 5-8  
Park City, Utah  
Park City  
(Quinnipiac)  
@tiana.mcintyre4



**5**  
**EMMA MACINTYRE**  
Fr.  
D | 5-4  
Halifax, Nova Scotia  
Stanstead College  
@emma\_macintyre5



**6**  
**KACEY BLUM**  
Fr.  
F | 5-6  
McLean, Va.  
McLean  
@kacey.blum



**8**  
**VICTORIA BORG**  
Fr.  
F | 5-4  
Burlington, Ontario  
Blyth Academy  
@victoriaborgg



**9**  
**BAILEY GRAY**  
Fr.  
D | 5-4  
Plymouth, Minn.  
Benilde-St. Margaret's  
@baileygray9



**10**  
**DANICA MARK**  
Jr.  
F | 5-7  
Duluth, Minn.  
Duluth Marshall School  
(Union)  
@danica.mark



**11**  
**CHARLIE VOGUE**  
Fr.  
F | 5-6  
Sun Prairie, Wisc.  
St. Paul's School  
@charlievoge



**13**  
**KAITLIN FINNEGAN**  
Gr.  
F | 5-4  
Tecumseh, Kan.  
Kansas Connections Academy  
(Lindenwood)  
@kaitlin\_finnegan



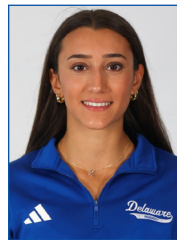
**15**  
**WREN ABBODD**  
Fr.  
D | 5-2  
Weymouth, Mass.  
Thayer Academy  
@wren.abboud



**16**  
**EVA MAYO**  
Fr.  
F/D | 5-6  
Honeoye Falls, N.Y.  
Kent School  
@eva\_mayo06



**17**  
**SUVINA HEIDT**  
Fr.  
D | 5-6  
Aurora, Colo.  
Winchendon School  
@suvina\_heidt77



**18**  
**FRANCESCA BARRESI**  
Fr.  
F | 5-6  
Ottawa, Ontario  
St. Joseph Catholic  
@francescaabarresi



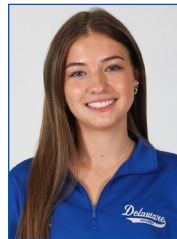
**19**  
**KATELYNN CHARLTON**  
Fr.  
F | 5-7  
Brampton, Ontario  
St. Martins Catholic  
@katelynn.charlton



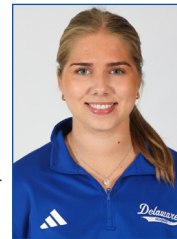
**20**  
**MEERA SMITH**  
Fr.  
F | 5-6  
Victoria, B.C.  
Shawnigan Lake School  
@meerasmith\_



**21**  
**BILLI ROMAN**  
Fr.  
F | 5-3  
Hockessin, Del.  
The Tatnall School  
@billi\_21



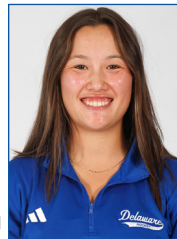
**24**  
**TAYLOR SCHOOLEY**  
Fr.  
D | 5-6  
Moon Township, Pa.  
Moon Area  
@taylor.schools



**27**  
**IDA HAAVE**  
Fr.  
F | 5-6  
Kristiansand, Norway  
Lillehammer  
@idahaaave



**31**  
**CHARLOTTE PAYNE**  
Fr.  
G | 5-8  
Oakville, Ontario  
Abbey Park  
@charlottepayne031



**35**  
**SYDNEY BUTLER**  
Sr.  
G | 5-6  
Darien, Conn.  
AITE  
@sydneybutler25



**ALLISON COOMEY**

Head Coach  
1st Season  
Niagara '02



**MELISSA SAMOSKEVICH**

Assistant Coach  
1st Season  
Quinnipiac '19



**TAYLOR WILLARD**

Assistant Coach  
1st Season  
Vermont '18



**MICHEL LAROCQUE**

Vol. Goalie Coach  
1st Season  
Boston U. '99