



DELAWARE FIGHTIN' BLUE HENS

ICE HOCKEY GAME NOTES

a new era. 



Brendan Thomas, Director, Communications & Creative Services | 207-400-2840 | brendant@udel.edu

SERIES HISTORY

All Time.....First Meeting
Streak.....
At Home.....
On the Road.....
Largest Win.....
Largest Loss.....
Last Win.....
Last Loss.....

HOW TO FOLLOW

TV/Stream.....FloHockey
Play-by-Play.....Matt Janus

Student Radio.....91.3 FM WVUD
Play-by-Play.....John Becker
Analyst.....Kat Henretty

X/Instagram.....@Delaware_IH
Live Stats.....bluehenstats.STATB.US
Tickets.....bluehens.com/IHTickets

GAME PROMOTIONS

Saturday
Giveaway.....Hockey Socks
Sunday
Giveaway.....Hockey Socks
Postgame.....Skate with the Team

WHO ARE WE

Only refer to our institution as the **University of Delaware** or **UD**. Do not use "U of D," "UofD," "the U of D" or "UDEl." Do not use periods in "UD."

We are the Fightin' Blue Hens on first reference and Blue Hens, Hens, or Blue & Gold after that.

MEDIA RELATIONS

For interview requests for ice hockey student-athletes or coaches, please contact Brendan Thomas, Director of Communications & Creative Services.

Email.....brendant@udel.edu
Cell.....207-400-2840

DELAWARE (0-2-0)

GM
3-4



Head Coach: Allison Coomey
Record at UD: 0-2-0 (1st season)
Career Record: same
Last: Lost, 5-2 vs. LIU



HOLY CROSS (2-0-0)

Head Coach: Katie Lachapelle
Record at HC: 39-138-14 (7th season)
Career Record: same
Last: Win, 3-0 vs. RPI

october 4-5 (2 p.m.) | newark, del. | fred rust ice arena (1,350) | flohockey

PUCK DROP

- ✦ The University of Delaware hockey team continues its season-opening 10-game homestand this weekend with its second-straight non-conference series.
- ✦ Delaware announced the addition of ice hockey as its 22nd varsity sport in December 2023. The Fightin' Blue Hens are the 45th Division I women's ice hockey program in the country.
- ✦ The Blue Hens have 22 student-athletes on their inaugural roster, featuring 17 freshmen and four transfers. Additionally, Delaware brought up goalie **Sydney Butler**, who spent the last three years playing for UD's club women's hockey team.
- ✦ In Delaware's inaugural game against LIU on September 26, freshman **Francesca Barresi** scored the program's first goal midway through the third period. Junior **Mattie Robitzer** made 27 saves. LIU scored two goals in the game's final 30 seconds to pull away for the 4-1 final.
- ✦ Graduate student **Kaitlin Finnegan** and freshman **Billi Roman** each netted goals to give UD a 2-0 lead, but LIU answered with five unanswered goals, including two empty-netters in the final minutes for the 5-2 win. Freshman **Charlotte Payne** made 22 saves in her collegiate debut.

- ✦ Holy Cross enters the weekend with a 2-0 record after a season-opening sweep of RPI at home. The Crusaders allowed just one goal on the weekend, picking up 2-1 and 3-0 victories. Five different goal scorers paced Holy Cross, while Alexia Moreau and Lulu Rourke had multi-point efforts over the two games. Brooke Loranger and Abby Hornung each had wins in goal, combining for 34 saves.

HEN LEADERS



goals

1

barresi / finnegan / roman



assists

1

charlton / lonask / mcintyre



shots

12

katelynn charlton



saves

27

mattie robitzer

2025-26 SCHEDULE

 sept. 26/27 Newark, Del. L, 4-1 L, 5-2	 oct. 4/5 Newark, Del. 2 pm / 2 pm FloHockey	 oct. 10/11 Newark, Del. 6 pm / 2 pm FloHockey	 oct. 17/18 Newark, Del. 6 pm / 2 pm FloHockey	 oct. 24/25 Newark, Del. 6 pm / 2 pm FloHockey	 oct. 31/nov. 1 Erie, Pa. 3 pm / 1 pm FloHockey	 nov. 8/9 Providence, R.I. 3 pm / 1 pm ESPN+	 nov. 14/15 Newark, Del. 5 pm / 1 pm FloHockey
 nov. 28/29 Schenectady, N.Y. 3 pm / 1 pm ESPN+	 dec. 5/6 Rochester, N.Y. 3 pm / 2 pm FloHockey	 jan. 2/3 Syracuse, N.Y. 6 pm / 3 pm FloHockey	 jan. 8/9 Newark, Del. 6 pm / 2 pm FloHockey	 jan. 16/17 St. Charles, Mo. 4 pm / 1 pm FloHockey	 jan. 23/24 University Park, Pa. 3 pm / 2 pm Big Ten+	 jan. 30/31 Newark, Del. 6 pm / 2 pm FloHockey	 feb. 6/7 Moon Township, Pa. 3 pm / 3 pm FloHockey

*all times ET

A NEW ERA

After a nearly 18-month wait, the new era is finally here and the University of Delaware Fightin' Blue Hens are officially full members of Conference USA as of July 1, 2025. Fourteen of UD's 22 varsity programs will be housed in CUSA, with seven others joining as affiliate members in the Atlantic Sun (women's lacrosse, men's and women's swimming & diving), Atlantic 10 (men's lacrosse), Mid-American Conference (rowing), The Summit League (men's soccer), and Atlantic Hockey America (ice hockey). Field hockey will be joining Mountain Pacific Sports Federation (MPSF) for the 2025 season, joining UC Davis as one of two founding members of the league's sponsorship

An athletic department built on history and tradition, Delaware brings an abundance of success to CUSA having won 10 national championships, 172 team conference titles, 282 individual conference crowns, 342 major conference awards, 2,655 all-league selections, and 543 all-americans.

UD student-athletes complement their athletic success with strong academic performances. During the 2024-25 academic year, the Blue Hens compiled a cumulative 3.41 grade-

point average—the highest in department history, excluding academic terms impacted by COVID-19. This marked the 11th-consecutive year and the 23rd-straight semester in which UD student-athletes have posted a 3.00 GPA or better.

The move will push the Delaware brand across the nation, spanning from the northeast down into Florida, and west as far as New Mexico. However, the reach won't stop there. At least five football games will hit the national scene on CBS Sports Network/ESPN family of networks, including a non-conference tilt on FOX against Colorado. Men's and women's basketball will also have the chance to play nationally televised games as part of CUSA's media rights agreement with CBS Sports Network and ESPN.

Speaking of reach, Delaware's initial announcements about joining Conference USA reached over two billion people according to social media analytics. Put that into perspective - just over one million people live in the state of Delaware. That means these announcements reached over 2,000 Delawares.

With the announcement of Delaware football transitioning to FBS, the University was committed to adding a women's sport to continue to stay Title IX compliant. The University looked at a number of key criteria, including the feasibility, continued commitment to gender equity, recruiting footprint, conference fit, facilities, and ability to win championships.

In its due diligence, the University of Delaware performed a feasibility study funded by the Industry Growth Fund, a joint initiative of the NHL and NHLPA, with the goal of empowering schools exploring the addition of Men's and/or Women's Division I varsity ice hockey. The results of the study reinforced UD's findings and made clear that women's ice hockey was the best path forward. In addition to this being the right decision for the University of Delaware, there's also the great benefit of helping to grow a sport that is popular in this region of the country.



CUSA SPONSORED DELAWARE SPORTS

- Baseball
- M/W Basketball
- W Cross Country/Track & Field
- Football
- M/W Golf
- W Soccer
- Softball
- M/W Tennis
- Volleyball

OTHER DELAWARE SPORTS AFFILIATIONS

- | | | | |
|----------------|-------------------------|-----------------|-------------------|
| - Field Hockey | MPSF | - W Rowing | Mid-American |
| - Ice Hockey | Atlantic Hockey America | - M Soccer | The Summit League |
| - M Lacrosse | Atlantic 10 | - M/W Swim/Dive | Atlantic Sun |
| - W Lacrosse | Atlantic Sun | | |

QUICK FACTS

School.....	University of Delaware
Location.....	Newark, Del.
Founded	1743
Enrollment	24,039
Interim President.....	Laura Carlson
School Website.....	www.udel.edu
Nickname	Fightin' Blue Hens
School Colors	Blue & Gold
Athletics Website	www.bluehens.com
Interim Director of Athletics.....	Jordan Skolnick
Conference.....	Atlantic Hockey America
Website	www.atlantichockeyamerica.com

HOCKEY PROGRAM

Arena	Fred Rust Ice Arena
Capacity	1,350
First Season of Ice Hockey.....	2025-26
All-Time Record	0-2-0
All-Time Fred Rust Record.....	0-2-0
National Championships	0
Conference Championships.....	0
Head Coach	Allison Coomey (Niagara '02)
Career Record.....	0-2-0 / 1st season
Record at UD.....	same
Letterwinners Returning/Lost.....	0/0
Starters Returning/Lost	0/0
Newcomers.....	22
2024-25 Overall Record	0-0
2024-25 AHA Record	0-0
2024-25 AHA Finish.....	n/a
2024-25 Postseason.....	n/a

TABLE OF CONTENTS

Storylines	3-6
Program information	3
Statistical comparison.....	3
Delaware record when.....	4
The last time	5
Roster & Pronunciations.....	7
Head coach Allison Coomey	8
Assistant coaches & support staff	9
Career stats & highs.....	10-12
Starters by game	13
Game-by-game leaders.....	14
Scoring plays	15
Team stats.....	16
NCAA rankings.....	17-18
TV roster.....	19

WHAT TO LOOK FOR...

– A win would be the first win in program history and the first victory for Delaware head coach **Allison Coomey**.

– Freshman **Taylor Schooley** will make her collegiate debut when she first takes the ice after missing UD's opening weekend series.

22nd varsity program

Delaware announced the addition of ice hockey as the University's 22nd varsity intercollegiate program in December 2023. The addition of hockey was in conjunction with Delaware's transition to Conference USA and FBS football and UD's continued commitment to stay Title IX compliant.

45th D1 program

Delaware becomes the 45th college or university to sponsor a Division I women's ice hockey program. The Blue Hens are the first program to start at the Division I level since Assumption College started its program ahead of the 2023-24 season.

first state, first season

The inaugural season is not only the first year that UD will have a Division I program, but the Blue Hens are the first Division I ice hockey team, men or women, in the state of Delaware.

The only NHL player to have ever come from the First State is Mark Eaton, who played 13 seasons for the Philadelphia Flyers, Nashville Predators, Pittsburgh Penguins, and New York Islanders.

hockey in the south

Of the 45 Division I women's ice hockey teams in the country, the University of Delaware is the second-most southern program. Only Lindenwood in St. Charles, Missouri, also in Atlantic Hockey America (AHA), is further south.

pro relations

A pair of Blue Hens are related to professional hockey players in both the NHL and PWHL.

Freshman forward **Katelynn Charlton** is the cousin of Mikyla Grant-Mentis who currently plays for PWHL Seattle.

Assistant Coach **Melissa Samoskevich** has twin younger siblings who both play professional hockey. Her younger brother, Mackie, was a first-round draft pick (24th overall) by the Florida Panthers in 2021 and has won two Stanley Cups. Her sister, Maddy, was drafted in the fifth round (39th overall) by PWHL Vancouver in 2025.

proud members of aha

Delaware is the seventh member of Atlantic Hockey America (AHA), joining fellow league members Lindenwood, Mercyhurst, Penn State, RIT, Robert Morris, and Syracuse. Formerly College Hockey America (CHA), the conference merged with the men's Atlantic Hockey Association prior to the 2024-25 season to form the AHA which now features 10 men's teams and seven women's teams.

The AHA has had alumni compete for eight countries at the Winter Olympics and skated off with 14 medals, including four gold. Professionally, several conference alumni are currently on Professional Women's Hockey League (PWHL) rosters, including three selections in the 2025 PWHL Draft in June.

STATISTICAL COMPARISON

Category	DEL	NCAA	AHA	HC	NCAA	HE
Scoring Offense	1.50	22nd	5th	2.50	17th	3rd
Scoring Defense	4.50	27th	7th	0.50	3rd	2nd
Scoring Margin	-3.00	25th	5th	2.00	13th	2nd
Power-Play Pct.	.000	22nd	6th	.167	16th	3rd
Penalty Killing Pct.	.800	23rd	5th	1.000	1st	1st
Goals	3	24th	6th	5	17th	3rd
Assists	3	25th	6th	10	14th	3rd
Points	6	25th	6th	15	17th	3rd
Power Play Goals	0	--	--	1	14th	3rd
Shorthanded Goals	0	--	--	0	--	--
Saves	49	20th	4th	34	26th	6th
Goals Against Average	4.50	27th	7th	0.50	3rd	2nd
Faceoff Win Pct.	.504	17th	5th	.474	19th	3rd
Penalty Minutes per Game	5.00	24th	6th	3.00	31st	7th

no stranger to starting programs

Head coach **Allison Coomey** was hired as the Blue Hens' first head coach in March 2024. She has spent the past year and a half compiling a roster and coaching staff ahead of the program's inaugural season.

This isn't the first time that Coomey has helped launch a new program. As a student-athlete, she was a member of the inaugural women's ice hockey team at Niagara University. She played four seasons for the Purple Eagles, serving as an alternate captain her senior season when Niagara advanced all the way to the 2002 NCAA Women's Frozen Four.

for the 302

Delaware is one of 11 states that are represented by one area code. Delaware is the 302, while the other states are: Alaska, Hawaii, Maine, Montana, New Hampshire, North Dakota, Rhode Island, South Dakota, Vermont, and Wyoming.

coaching connection

Delaware head coach **Allison Coomey** and Holy Cross head coach Katie Lachapelle have overlapped a couple of times throughout their careers. Lachapelle was an assistant coach at Niagara during Coomey's junior and senior seasons, including when the Purple Eagles reached the Women's Frozen Four in 2002. The two also spent nine seasons together behind the bench at Boston University (2008-17) as assistant coaches.

first commit, first goal

Freshman **Francesca Barresi** cemented herself in the program record book when she scored the first-ever goal in Delaware ice hockey history during the Blue Hens' inaugural game against LIU on September 26. The Ottawa, Canada native blocked a pass and came in alone on a breakaway to net her first collegiate goal midway through the third period. It was only fitting that Barresi scored the first goal as she was the first player to commit to play for the program in November 2024.

weekend of firsts

Delaware's inaugural weekend against LIU saw a lot of firsts across the program as 16 student-athletes made their collegiate debuts and four others made their first Blue Hen appearances.

Freshmen **Francesca Barresi** and **Billi Roman** scored their first collegiate goals, while **Katelynn Charlton** and **Lexie Lonask** recorded their first career assists.

Graduate student **Kaitlin Finnegan** (goal) and senior **Tiana McIntyre** (assist) registered their first points in the Blue & Gold after starting their careers at Lindenwood and Quinnipiac, respectively.

It was also the first game behind the bench for head coach **Allison Coomey** after 21 seasons as an assistant coach at five different programs.

diverse roster

Delaware's inaugural roster features 22 student-athletes including 15 Americans from 12 states, six from Canada, and one from Norway. Only three of the 12 states represented (Massachusetts, Minnesota, Pennsylvania) are called home by more than one Blue Hen. The other nine states include Arizona, Colorado, Connecticut, Delaware, Kansas, New York, Utah, Virginia, and Wisconsin.

unique home states

Freshman **Billi Roman** (Hockessin) is the only active Division I women's ice hockey player to hail from the state of Delaware. Likewise, graduate student **Kaitlin Finnegan** (Tecumseh) is the only active player in DI from Kansas.

When senior **Tiana McIntyre** (Park City) entered her freshman season at Quinnipiac in 2022-23, she became the first woman from the state of Utah to play Division I ice hockey. There are now two as Eden Granley (American Fork) is a sophomore at St. Anselm.

Freshman **Lexie Lonask** (Chandler) is one of three active players in Division I from Arizona. The other two are Union freshmen Natalie Andelova (Laveen Village) and Isabel Powers (Scottsdale).

DELAWARE RECORD WHEN...

	25-26	COOMEY
Overall	0-2-0	0-2-0
Conference	0-0-0	0-0-0
Non-conference	0-2-0	0-2-0
Home	0-2-0	0-2-0
Away	0-0-0	0-0-0
Neutral	0-0-0	0-0-0
Current streak	L2	L2
Current home streak	L2	L2
Current road streak	--	--
Current neutral streak	--	--
Day game	0-1-0	0-1-0
Night game	0-1-0	0-1-0
September	0-2-0	0-2-0
October	0-0-0	0-0-0
November	0-0-0	0-0-0
December	0-0-0	0-0-0
January	0-0-0	0-0-0
February	0-0-0	0-0-0
vs. ranked opponent	0-0-0	0-0-0
Scoring first	0-1-0	0-1-0
Opponent scores first	0-1-0	0-1-0
Scoring 0-1 goals	0-1-0	0-1-0
Scoring 2 goals	0-1-0	0-1-0
Scoring 3 goals	0-0-0	0-0-0
Scoring 4+ goals	0-0-0	0-0-0
Allowing 0-1 goals	0-0-0	0-0-0
Allowing 2 goals	0-0-0	0-0-0
Allowing 3 goals	0-0-0	0-0-0
Allowing 4+ goals	0-2-0	0-2-0
Leading after 1st	0-1-0	0-1-0
Trailing after 1st	0-0-0	0-0-0
Tied after 1st	0-1-0	0-1-0
Leading after 2nd	0-0-0	0-0-0
Trailing after 2nd	0-1-0	0-1-0
Tied after 2nd	0-1-0	0-1-0
Overtime	0-0-0	0-0-0
Shootout	0-0-0	0-0-0
Out-shooting opponent	0-1-0	0-1-0
Out-shot by opponent	0-1-0	0-1-0
Shots are even	0-0-0	0-0-0
Winning more faceoffs	0-1-0	0-1-0
Losing more faceoffs	0-1-0	0-1-0
Faceoffs are even	0-0-0	0-0-0
Taking more penalties	0-0-0	0-0-0
Taking fewer penalties	0-2-0	0-2-0
Penalties are even	0-0-0	0-0-0

norwegian national

Freshman **Ida Haave** is a member of the Norwegian National Team. A native of Kristiansand, Norway, Haave represented her home country at the 2025 IIHF Women's World Championship in Czechia, recording one assist in four games. Norway went 1-3 in pool play, finishing fourth of five teams in Group B.

oh captain, my captains

Delaware will be led by four captains this season. Graduate student **Kaitlin Finnegan** and senior **Tiana McIntyre** will be the first Blue Hens to don the captain's "C" while juniors **Mattie Robitzer** and **Danica Mark** will serve as alternate captains.

Finnegan has appeared in 107 career games after spending her first five seasons at Lindenwood. McIntyre played 67 games over her first three seasons at Quinnipiac.

Robitzer and Mark both played two seasons at Northeastern and Union, respectively.

destined to be a blue hen

Freshman **Billi Roman** is not only the lone Delawarean on the roster, but the only woman from the First State playing Division I hockey. Hailing from Hockessin, Roman attended The Tatnall School in Wilmington, where she suited up for the boys hockey team that played its home games at Fred Rust Ice Arena.

Roman has several relatives who attended UD, including her father and grandfather, as well as an uncle and two cousins who played for Delaware's club hockey programs. She is wearing No. 21 in honor of her late uncle, Tim Roman, who played for the Blue Hens in the early 1990s.

elevated

Senior goalie **Sydney Butler** is entering her fourth year at the University of Delaware. The wildlife ecology and conservation major spent her first three years playing for UD's women's club hockey team.

twins

The genetic trait of twins runs strong on the Blue Hens roster. Head coach **Allison Coomey** has a twin Alissa, while junior goaltender **Mattie Robitzer** also has a twin sister - Lily. Assistant coach **Melissa Samoskevich** has two younger siblings who are twins - Mackie and Maddy - who both play professional hockey.

growing the game out west

Senior captain **Tiana McIntyre** is proud to own the title as the first Division I ice hockey player from Utah. This past summer, McIntyre began working for Smith Entertainment Group (SEG), the company that owns the NHL's Utah Mammoth and the NBA's Utah Jazz. In her role, she assists with the development and growth of youth hockey in Utah, going around the state and helping run camps and clinics. McIntyre has worked side-by-side with great women's hockey players such as former U.S. Olympians Hillary Knight and Lindsey Fry, Walter Cup Champion Dominique Petrie of the Minnesota Frost in the PWHL, and NHL veteran Alexander Kerfoot.

home sweet home

While Delaware will be playing its first home games in Fred Rust Ice Arena this season, a pair of Blue Hens are quite familiar with the venue. Freshman **Billi Roman** played her high school hockey at Fred Rust while playing for The Tatnall School. Junior **Mattie Robitzer** grew up just over the Pennsylvania border in Kennett Square and often played youth hockey in Newark.

head coaching couple

Head coach **Allison Coomey** is married to Delaware Women's Soccer Head Coach **Kelly Lawrence**, who is in her third season at the helm of the Blue Hens. The women's soccer team enters the weekend with an 8-1-3 overall record and is 1-1-1 in its first season in Conference USA.

THE LAST TIME DELAWARE...

Scored 4 goals	
Scored 5+ goals	
Allowed 5+ goals	9/27/25 vs. LIU (L, 5-2)
Won in OT	
Lost in OT	
Won in a shootout	
Lost in a shootout	
Had a shutout	
Played a ranked team	
Beat a ranked team	
Took 30-39 shots	
Took 40-49 shots	
Took 50+ shots	
Allowed 30-39 shots	9/26/25 vs. LIU (31)
Allowed 40-49 shots	
Allowed 50+ shots	
Scored 2 PP goals	
Scored 3+ PP goals	
Scored a shorthanded goal	
Had 4 different goal scorers	
Had 5+ goal scorers	
Did not commit a penalty	

THE LAST TIME A BLUE HEN...

Scored 2 goals	
Scored 3 goals	
Had 2 assists	
Had 3+ assists	
Had 3+ points	
Had 5+ shots	Charlton, 9/27/25 vs. LIU (7_
Made 20+ saves	Payne, 9/27/25 vs. LIU (22)
Made 25+ saves	Robitzer, 9/26/25 vs. LIU (27)
Recorded a shutout	
Scored a shorthanded goal	

IN THE RANKINGS

The University of Delaware is ranked in the top 1.6% globally, among nearly 21,000 institutions, based on educational quality, employability, faculty quality and research. In late 2024, Wall Street Journal ranked UD at No. 10 among public universities and No. 26 among all U.S. universities based on student professional readiness and career outcomes.

Physical Therapy graduate program
No. 1 in the nation
(U.S. News & World Report)

One of 24 UD graduate programs ranked in the top-100 by U.S. News

Entrepreneurship undergraduate program
No. 3 in the Mid-Atlantic
(The Princeton Review)

Chemical Engineering undergraduate program
No. 4 in the nation
(U.S. News & World Report)

One of six UD undergraduate programs ranked in the top-100 by U.S. News

Chemical Engineering graduate program
No. 8 in the nation
(U.S. News & World Report)

One of 24 UD graduate programs ranked in the top-100 by U.S. News

Online MBA program
No. 20 out of 355 in the nation
(U.S. News & World Report)

Online Master's in Education program
No. 20 out of 313 in the nation
(U.S. News & World Report)

BEST VALUE

UD ranks among the country's best value propositions, according to U.S. News & World Report, Wall Street Journal, Kiplinger's and Forbes. This summer, The Princeton Review ranked UD among its 209 Best Value Colleges for 2025, earning one of the publication's highest return-on-investment ratings. Money magazine awarded UD 4½ stars out of a possible five in its 2025-26 rating of America's best colleges. The University, according to Money, "stands out for its affordability" as a public college providing an excellent value for in-state students, and is considered one of the Best Colleges in the Northeast.

international experience

The Blue Hens have loads of international experience among its roster and coaching staff.

Freshman **Ida Haave** is currently a member of the Norwegian National Team, representing her country at the 2025 IIHF Women's World Championships where she had an assist in four games.

Assistant coach **Melissa Samoskevich** won gold with Team USA at the 2019 IIHF Women's World Championship in Finland, playing in all seven games and scoring two goals. Samoskevich also represented the U.S. at the 2014 and 2015 U18 Women's World Championships. She had two assists in 2014 and six goals, including a hat trick against Russia, in 2015.

Assistant coach **Taylor Willard** won a silver medal with Team USA at the 2013 U18 Women's World Championships where she picked up three assists in five games.

Head coach **Allison Coomey** was on staff with the silver-medal winning USA National Team at the 2022 Beijing Olympic Games as a team scout. She served as the head coach for the U23 U.S. Women's National Team in 2021 and 2022 and spent time as an assistant coach for the senior national team during the 2021 IIHF World Championship.

aha connections

Several Blue Hens have strong ties to Delaware's new conference. Graduate student and team captain **Kaitlin Finnegan** played five seasons at Lindenwood in Missouri. Finnegan skated in 107 games for the Lions, netting seven goals and adding 16 assists. Freshman **Taylor Schooley** is the daughter of Derek Schooley, who has been the head coach of the Robert Morris men's ice hockey team since 2004.

Additionally, head coach **Allison Coomey** (2017-24) and assistant coach **Melissa Samoskevich** (2020-22) both spent time behind the bench at Penn State.

nhl partners

Shortly after announcing the addition of women's ice hockey as a varsity sport, the University of Delaware made another important announcement. In a first-of-its-kind pairing, Delaware and the Philadelphia Flyers formed a strategic partnership aligned around growing the game of hockey, community engagement, and launching a world-class women's ice hockey program. The Blue Hens became the only NCAA Division I women's ice hockey program in the country to have a partnership with an NHL team.

Delaware ice hockey student-athletes will have access to career and professional development with the Flyers, as well as a chance to participate in the Flyers Next Shift program. The program was developed to allow women in college to shadow professional women throughout the organization on game nights. Other opportunities for internships in both business and hockey operations could happen as well.

The partnership also brings co-hosted youth hockey clinics to Fred Rust Ice Arena, the Blue Hens' home in Newark, as well as bringing the Flyers Community Caravan to UD.



2025-26 DELAWARE NUMERICAL ROSTER

#	NAME	POS.	YR.	HT.	S/C	HOMETOWN/HIGH SCHOOL (PREV. SCHOOL)
1	Mattie Robitzer	G	Jr.	5-4	L	Kennett Square, Pa. / Unionville (Northeastern)
2	Lexie Lonask	D	Fr.	5-8	R	Chandler, Ariz. / Shattuck St. Mary's [Minn.]
3	Madison Bonavita	F	Fr.	6-0	L	Longmeadow, Mass. / Milton Academy
4	Tiana McIntyre	D	Sr.	5-8	R	Park City, Utah / Park City (Quinnipiac)
5	Emma MacIntyre	D	Fr.	5-4	R	Halifax, Nova Scotia / Stanstead College
6	Kacey Blum	F	Fr.	5-6	R	McLean, Va. / McLean
8	Victoria Borg	F	Fr.	5-4	L	Burlington, Ontario / Blyth Academy
9	Bailey Gray	D	Fr.	5-4	L	Plymouth, Minn. / Benilde-St. Margaret's
10	Danica Mark	F	Jr.	5-7	R	Duluth, Minn. / Duluth Marshall School (Union)
11	Charlie Voge	F	Fr.	5-6	R	Sun Prairie, Wisc. / St. Paul's School
13	Kaitlin Finnegan	F	Gr.	5-4	R	Tecumseh, Kan. / Kansas Connections Academy (Lindenwood)
15	Wren Abboud	F	Fr.	5-2	L	Weymouth, Mass. / Thayer Academy
16	Eva Mayo	F/D	Fr.	5-6	R	Honeoye Falls, N.Y. / Kent School
17	Suvina Heidt	D	Fr.	5-6	R	Aurora, Colo. / Winchendon School [Mass.]
18	Francesca Barresi	F	Fr.	5-6	L	Ottawa, Ontario / St. Joseph Catholic
19	Katelynn Charlton	F	Fr.	5-7	L	Brampton, Ontario / St. Martins Catholic Secondary
20	Meera Smith	F	Fr.	5-6	R	Victoria, British Columbia / Shawnigan Lake School
21	Billi Roman	F	Fr.	5-3	L	Hockessin, Del. / The Tatnall School
24	Taylor Schooley	D	Fr.	5-6	L	Moon Township, Pa. / Moon Area
27	Ida Haave	F	Fr.	5-6	L	Kristiansand, Norway / Norges Toppidrettsgymnas Lillehammer
31	Charlotte Payne	G	Fr.	5-8	L	Oakville, Ontario / Abbey Park
35	Sydney Butler	G	Sr.	5-6	R	Darien, Conn. / AITE

PRO-NUN-SEE-AY-SHUNS

#1	Mattie ROBITZER	ROW-bit-zer	#18	Francesca BARRESI	buh-reh-SEE
#2	Lexie LONASK	low-NASK	#24	Taylor SCHOOLEY	school-EE
#3	Madison BONAVIDA	bawn-uh-VEE-tuh	#27	IDA HAAVE	ee-da ho-VUH
#6	Kacey BLUM	bloom	AC	Melissa SAMOSKEVICH	sam-OH-skeh-vitch
#15	Wren ABBODD	ah-BOOD			
#17	SUVINA HEIDT	seh-VEE-nuh height			

HEAR OUR NAMES



ROSTER BY CLASS

GRADUATES (1)

Kaitlin Finnegan

SENIORS (2)Sydney Butler
Tiana McIntyre**JUNIORS (2)**Danica Mark
Mattie Robitzer**FRESHMEN (17)**Wren Abboud
Francesca Barresi
Kacey Blum
Madison Bonavita
Victoria Borg
Katelynn Charlton
Bailey Gray
Ida Haave
Suvina HeidtLexie Lonask
Emma MacIntyre
Eva Mayo
Charlotte Payne
Billi Roman
Taylor Schooley
Meera Smith
Charlie Voge

ALPHABETICAL

#	NAME	POS.
15	Wren Abboud	F
18	Francesca Barresi	F
6	Kacey Blum	F
3	Madison Bonavita	F
8	Victoria Borg	F
35	Sydney Butler	G
19	Katelynn Charlton	F
13	Kaitlin Finnegan	F
9	Bailey Gray	D
27	Ida Haave	F
17	Suvina Heidt	D
2	Lexie Lonask	D
5	Emma MacIntyre	D
10	Danica Mark	F/D
16	Eva Mayo	F/D
4	Tiana McIntyre	D
31	Charlotte Payne	G
1	Mattie Robitzer	G
21	Billi Roman	F
24	Taylor Schooley	D
20	Meera Smith	F
11	Charlie Voge	F

GEOGRAPHICAL

Arizona (1)

2 Lexie Lonask D

Canada (6)18 Francesca Barresi F
5 Emma MacIntyre D
8 Victoria Borg F
19 Katelynn Charlton F
31 Charlotte Payne G
20 Meera Smith F**Colorado (1)**

17 Suvina Heidt D

Connecticut (1)

35 Sydney Butler G

Delaware (1)

21 Billi Roman F

Kansas (1)

13 Kaitlin Finnegan F

Massachusetts (2)15 Wren Abboud F
3 Madison Bonavita F**Minnesota (2)**9 Bailey Gray D
10 Danica Mark F**New York (1)**

16 Eva Mayo F/D

Norway (1)

27 Ida Haave F

Pennsylvania (2)1 Mattie Robitzer G
24 Taylor Schooley D**Utah (1)**

4 Tiana McIntyre D

Virginia (1)

6 Kacey Blum F

Wisconsin (1)

11 Charlie Voge F



THE COOMEY FILE

Hometown: Baldwinsville, N.Y.
Alma Mater: Niagara '02
Degree: Education
Master's: School Counseling
Years in Coaching: 22nd in 2025-26

NOTABLE HIGHLIGHTS

2019 AHCA Women's Hockey Assistant COY
 2013 National Champ. Appearance (BU)
 2011 National Champ. Appearance (BU)
 2002 Niagara Team Captain
 2002 Women's Frozen Four
 1999 Niagara WLAX Rookie of the Year

AS DELAWARE HEAD COACH

Year	1st in 2025-26
Overall Record	0-2-0
Home	0-2-0
Away	0-0-0
Neutral	0-0-0
vs. Ranked Teams	0-0-0
In AHA Games	0-0-0

COOMEY YEAR-BY-YEAR

YEAR	W-L-T	PCT.	CONF
2025-26	0-2-0	.000	0-0
TOTAL	0-2-0	.000	0-0

First career win:
Postseason:

ALL-TIME VS OPPONENTS

Brown	0-0-0
Holy Cross	0-0-0
LIU	0-2-0
Lindenwood	0-0-0
Mercyhurst	0-0-0
Penn State	0-0-0
RIT	0-0-0
Robert Morris	0-0-0
Syracuse	0-0-0
Union	0-0-0

HEAD COACH ALLISON COOMEY

With over two decades of women's ice hockey coaching experience, the University of Delaware selected Allison Coomey to be the inaugural head coach of the women's ice hockey program on March 26, 2024.

Coomey comes to Newark after spending the past seven seasons at Penn State. She served as an assistant coach for three seasons before being promoted to associate head coach in 2020-21.

Over the course of her career, Coomey has coached four student-athletes to the Olympics, eight to national teams, four All-Americans, 15 major conference award winners, and 47 all-conference selections over her time at Penn State and Boston U.

Coomey and the Nittany Lions captured the past two league tournament titles, earning a bid to the NCAA Tournament. The team also claimed the CHA regular season title in three of the past four seasons.

Primarily responsible for coaching defense, Coomey's leadership turned the Nittany Lions into one of the best defensive units in the country by allowing just 1.88 goals per game over the past five seasons dating back to 2019-20.

Selected for various international coaching roles with USA Hockey, Coomey was on staff with the silver-medal winning USA National Team at the 2022 Beijing Olympic Games as a team scout and extension of the coaching staff. Coomey also served as the head coach for the U23 US Women's National Team in 2021 and 2022.

Coomey also spent time as an assistant coach for the USA senior national team during the 2021 IIHF World Championship. She was also a member of USA Hockey's scouting staff at the 2019 IIHF U18 Women's World Championship.

At the 2019 America Hockey Coaches Association Convention, Coomey received the AHCA Women's Hockey Assistant Coach of the Year award for her outstanding career resume.

Prior to Penn State, Coomey spent nine seasons at Boston University where she helped the Terriers qualify for the NCAA Tournament six times, including a pair of NCAA Championship appearances in 2011 and 2013. While at BU, Coomey coached four Olympians who combined to win six gold medals for the Canadian National Team at the 2010 and 2014 Winter Olympic Games.

A four-year letterwinner at Niagara, Coomey returned to her alma mater as an assistant coach from 2004-08, helping the Purple Eagles reach the CHA title game twice.

Before Niagara, Coomey served as an assistant coach at Plattsburgh in 2003-04 where she helped guide the Cardinals to the 2004 Eastern Collegiate Athletic Conference (ECAC) West Division III regular-season title and the NCAA Division III semifinals. Coomey secured her first job in the industry as an assistant women's hockey coach at Connecticut College.

The Baldwinsville, New York, native earned two degrees from Niagara, a bachelor's degree in education in 2002 and a master's degree in school counseling in 2008. She was a two-time ECAC All-Academic Team member and earned a spot on the Metro Atlantic Athletic Conference All-Academic Team.

Coomey was a two-sport letterwinner at Niagara, playing ice hockey and lacrosse from 1998-2002. On the ice, she served as an alternate captain during her senior season and helped the team to its most successful campaign in program history. The Purple Eagles reached the 2002 NCAA Women's Frozen Four and finished tied for third in the final national poll. On the lacrosse field, she earned the team's rookie of the year award.

COOMEY'S COACHING ASSIGNMENTS

YEAR	SCHOOL	POSITION
2025-Pres.	Delaware	Head Coach
2017-24	Penn State	Assistant Coach / Associate Head Coach
2008-17	Boston U.	Assistant Coach
2004-08	Niagara	Assistant Coach
2003-04	Plattsburgh	Assistant Coach
2002-03	Connecticut College	Assistant Coach

SUPERLATIVES UNDER COOMEY

Goals Scored	2, vs. LIU (9/26/25)	Most Goals Allowed	5, vs. LIU (9/27/25)
Shots	--	Fewest Opponent Shots	--
Shots on Goal	--	Fewest Opponent SOG	--
Power Play Goals	--	Most Saves	--
Shorthanded Goals	--		
Saves	--		

ASSISTANT COACHES

MELISSA SAMOSKEVICH



An IIHF World Champion with Team USA, Samoskevich joined the University of Delaware ice hockey program as its first-ever assistant coach in July of 2024.

Samoskevich came to Newark after spending the 2023-24 season as an assistant coach at Princeton.

With the Tigers, she assisted with video analysis, practice planning, drill implementation, special teams, and game management.

In the 2022-23 season, Samoskevich served as the director of player development and operations at her alma mater, Quinnipiac. The Bobcats went 30-10, making the ECAC Hockey semifinals and earning an at-large NCAA tournament bid.

Samoskevich spent the previous two seasons at Penn State with Head Coach Allison Coomey, helping the Nittany Lions to an overall record of 34-13-7 and 24-5-5 in College Hockey America.

A Sandy Hook, Connecticut native, Samoskevich scored 54 goals and added 55 assists during her undergraduate career at Quinnipiac, ranking third and fifth, respectively in school history. Her 109 points were the fourth-most in program history. Samoskevich was an ECAC Hockey All-Rookie honoree in 2016 while helping the Bobcats to the ECAC tournament title.

Following her final season at Quinnipiac, Samoskevich was named to the U.S. team for the 2019 IIHF Women's World Championship in Finland, playing in all seven games as the Americans went undefeated to win the gold medal. Samoskevich had two goals during the pool-play round, one each against Finland and Russia.

She also donned the red, white, and blue at a pair of U18 Women's World Championships. In 2014 in Hungary, she had two assists as the U.S. won silver, and in 2015 in Buffalo, the U.S. won gold with Samoskevich scoring six goals including a hat trick against Russia and two goals in a semifinal win over the Czech Republic.

After graduating from Quinnipiac in 2019 with a history degree, Samoskevich began her professional career by playing part of the 2019-20 season professionally in Sweden with Brynäs IF. Later that season, she returned to the U.S. to play first with the PWHPA's New England team and then with her home-state Connecticut Whale in the NWHL/PHF.

TAYLOR WILLARD



Willard joined the Delaware coaching staff as an assistant coach in 2025 ahead of the program's inaugural season.

Willard came to Newark after spending four seasons as an assistant coach at Norwich University where she coached 27 all-conference selections, two NEHC Rookie of the Year recipients and

Livia Brooks became the first player in program history to win NEHC Player and Rookie of the Year honors in 2023-24. The Cadets were NEHC Championship in 2022-23 to earn a berth in the NCAA Tournament and won consecutive NEHC regular season championships in 2023-24 and 2024-25. Over Willard's four seasons, Norwich either ranked or receiving votes in all but two USCHO Division III Top-15 Women's Polls.

In 2024-25, Willard guided the team's defense that ranked ninth nationally in scoring defense (1.19 goals/game) and second with 11 shutouts. She also led the penalty-killing unit that had a 92.9-percent success rate.

Willard's penalty killers set a program record in 2023-24 by killing 95.3-percent of penalties, which led the entire nation. The scoring defense (0.93) was second in the country, and recorded 10 team shutouts.

Willard began her coaching career as a volunteer assistant coach for two seasons at her alma mater, the University of Vermont, helping lead the Catamounts to back-to-back Hockey East Quarterfinal appearances.

A two-time team captain at Vermont, Willard ranks among the program's top 10 for career games played (145), points (62), assists (41) and power-play goals (12). Her 62 points was the most by a Vermont defenseman.

Willard was a two-time Hockey East Second Team All-Star (2015-16, 2016-17) and an honorable mention all-star in 2017-18. She was named to the New England Hockey Writers Association Division I All-Star (2016-17). Willard also won the 2018 Sarah Devens Award, presented annually to a player who "demonstrates leadership and commitment on and off the ice."

Willard played professionally for the Montreal Canadiens (2018-19) in the Canadian Women's Hockey League. She registered seven points (two goals, five assists) in 26 games. Willard was also a member of Team USA at the 2013 U18 Women's World Championships where she picked up three assists in five games and won a silver medal.

MICHEL LAROCQUE



Larocque joined the University of Delaware in August 2025 ahead of the program's inaugural season as the team's volunteer goalie coach.

A USA Hockey Level 5 Certified Coach and Gold Level Goaltending Coach, Larocque has run his own goaltender training

company – ML28 Hockey – since 2001. He has worked with goalies of all levels as a regional goalie coach for club and scholastic programs as well as organizing camps, clinics and private lessons across multiple age ranges.

Larocque had a distinguished collegiate career at Boston University where he played 97 career games from 1995 to 1999, helping lead the Terriers to the 1997 Hockey East championship, four-straight Beanpot titles, and three NCAA Tournament appearances including an appearance in the 1997 national championship game where he made 24 saves. Larocque was a two-time All-Hockey East selection and was an All-American in 1999 as well as a Hobey Baker finalist. He also was the 1997 Hockey East Tournament MVP and selected to the 1996 Hockey East All-Rookie Team.

Originally drafted by the San Jose Sharks in the sixth round of the 1996 NHL Draft, Larocque was traded to the Chicago Blackhawks in 1999. He made his NHL debut in 2001 against Philadelphia and played in three games for the Blackhawks.

SUPPORT STAFF

Jack Davis
Devon Cummings
Alex Davisson
Dr. Clare Devine

Sport Administrator
Academic Advisor
Athletic Trainer
Sport Psychologist

Austin Mark
Jake Prettyman
Brendan Thomas
Kate Winstanley

Team Nutritionist
Equipment Manager
Athletic Communications
Strength & Conditioning Coach

CAREER STATS AND HIGHS

1 • MATTIE ROBITZER

G • Jr. • 5-4

Kennett Square, Pa. / Unionville (Northeastern)

ROBITZER, Mattie

SEASON	TEAM	GP	G	A	Points	Shots	Shot%	Pen-Min	+/-	PPG	SHG	GWG	Bik	FOW	FOL	FO%
2023-24	NE	1	0	0	0	0	.000	0 - 0	0	0	0	0	0	0	0	.000
2024-25	NE	3	0	0	0	0	.000	0 - 0	0	0	0	0	0	0	0	.000
2025-26	UD	1	0	0	0	0	.000	0 - 0	0	0	0	0	0	0	0	.000
TOTAL FOR UD		1	0	0	0	0	.000	0 - 0	0	0	0	0	0	0	0	.000
TOTAL		5	0	0	0	0	.000	0 - 0	0	0	0	0	0	0	0	.000

SEASON	TEAM	GP-GS	Minutes	GA	GAAvg	Saves	Save%	W	L	T	Sho	PPG	SHG
2023-24	NE	1 - 0	0	0	0	0	.000	0	0	0	0	0	0
2024-25	NE	3 - 2	151.5	5	1.99	49	.907	1	1	0	0	1	0
2025-26	UD	1 - 1	58.42	3	3.09	27	.900	0	1	0	0	1	1
TOTAL FOR UD		1 - 1	58.42	3	3.09	27	.900	0	1	0	0	1	1
TOTAL		5 - 3	209.92	8	2.29	76	.905	1	2	0	0	2	1

Single Game Highs

Statistic	Value
Saves	27 vs LIU 09/26/25

2 • LEXIE LONASK

D • Fr. • 5-8

Chandler, Ariz. / Shattuck St. Mary's [Minn.]

LONASK, Lexie

SEASON	TEAM	GP	G	A	Points	Shots	Shot%	Pen-Min	+/-	PPG	SHG	GWG	Bik	FOW	FOL	FO%
2025-26	UD	2	0	1	1	4	.000	0 - 0	-1	0	0	0	4	0	0	.000
TOTAL		2	0	1	1	4	.000	0 - 0	-1	0	0	0	4	0	0	.000

Single Game Highs

Statistic	Value
Points	1 vs LIU 09/27/25
Assists	1 vs LIU 09/27/25
Shots	2 vs LIU 09/26/25, vs LIU 09/27/25

3 • MADISON BONAVIDA

F • Fr. • 6-0

Longmeadow, Mass. / Milton Academy

BONAVIDA, Maddie

SEASON	TEAM	GP	G	A	Points	Shots	Shot%	Pen-Min	+/-	PPG	SHG	GWG	Bik	FOW	FOL	FO%
2025-26	UD	2	0	0	0	0	.000	2 - 4	0	0	0	0	0	0	1	.000
TOTAL		2	0	0	0	0	.000	2 - 4	0	0	0	0	0	0	1	.000

Single Game Highs

Statistic	Value
Penalties	1 vs LIU 09/26/25, vs LIU 09/27/25
Penalty minutes	2 vs LIU 09/26/25, vs LIU 09/27/25
Plus/minus	1 vs LIU 09/27/25

4 • TIANA MCINTYRE

D • Sr. • 5-8

Park City, Utah / Park City (Quinnipiac)

MCINTYRE, Tiana

SEASON	TEAM	GP	G	A	Points	Shots	Shot%	Pen-Min	+/-	PPG	SHG	GWG	Bik	FOW	FOL	FO%
2022-23	QU	8	0	0	0	0	.000	0 - 0	0	0	0	0	0	0	0	.000
2023-24	QU	26	0	2	2	13	.000	5 - 10	6	0	0	0	8	0	0	.000
2024-25	QU	33	0	0	0	21	.000	0 - 0	0	0	0	0	16	0	0	.000
2025-26	UD	2	0	1	1	1	.000	0 - 0	-3	0	0	0	0	0	0	.000
TOTAL FOR UD		2	0	1	1	1	.000	0 - 0	-3	0	0	0	0	0	0	.000
TOTAL		69	0	3	3	35	.000	5 - 10	3	0	0	0	24	0	0	.000

Single Game Highs

Statistic	Value
Points	1 vs Maine 09/29/23, vs Union (NY) 12/01/23, vs LIU 09/27/25
Assists	1 vs Maine 09/29/23, vs Union (NY) 12/01/23, vs LIU 09/27/25
Shots	3 at Harvard 11/09/24
Penalties	3 vs Rensselaer 12/02/23
Penalty minutes	6 vs Rensselaer 12/02/23
Plus/minus	2 at Harvard 01/12/24

5 • EMMA MACINTYRE

D • Fr. • 5-4

Halifax, Nova Scotia / Stanstead College

MACINTYRE, Emma

SEASON	TEAM	GP	G	A	Points	Shots	Shot%	Pen-Min	+/-	PPG	SHG	GWG	Bik	FOW	FOL	FO%
2025-26	UD	2	0	0	0	1	.000	0 - 0	-4	0	0	0	4	0	0	.000
TOTAL		2	0	0	0	1	.000	0 - 0	-4	0	0	0	4	0	0	.000

Single Game Highs

Statistic	Value
Shots	1 vs LIU 09/27/25

Single Season Rankings

Statistic	Rank	Value / Season
Blocks	t7th	4 / 2025-26

6 • KACEY BLUM

F • Fr. • 5-6

McLean, Va. / McLean

BLUM, Kacey

SEASON	TEAM	GP	G	A	Points	Shots	Shot%	Pen-Min	+/-	PPG	SHG	GWG	Bik	FOW	FOL	FO%
2025-26	UD	2	0	0	0	3	.000	0 - 0	-3	0	0	0	1	0	0	.000
TOTAL		2	0	0	0	3	.000	0 - 0	-3	0	0	0	1	0	0	.000

Single Game Highs

Statistic	Value
Shots	2 vs LIU 09/26/25

8 • VICTORIA BORG

F • Fr. • 5-4

Burlington, Ontario / Blyth Academy

BORG, Victoria

SEASON	TEAM	GP	G	A	Points	Shots	Shot%	Pen-Min	+/-	PPG	SHG	GWG	Bik	FOW	FOL	FO%
2025-26	UD	2	0	0	0	1	.000	1 - 2	-4	0	0	0	2	0	0	.000
TOTAL		2	0	0	0	1	.000	1 - 2	-4	0	0	0	2	0	0	.000

Single Game Highs

Statistic	Value
Shots	1 vs LIU 09/27/25
Penalties	1 vs LIU 09/26/25
Penalty minutes	2 vs LIU 09/26/25

9 • BAILEY GRAY

D • Fr. • 5-4

Plymouth, Minn. / Benilde-St. Margaret's

GRAY, Bailey

SEASON	TEAM	GP	G	A	Points	Shots	Shot%	Pen-Min	+/-	PPG	SHG	GWG	Bik	FOW	FOL	FO%
2025-26	UD	2	0	0	0	4	.000	1 - 2	0	0	0	0	3	0	0	.000
TOTAL		2	0	0	0	4	.000	1 - 2	0	0	0	0	3	0	0	.000

Single Game Highs

Statistic	Value
Shots	4 vs LIU 09/27/25
Penalties	1 vs LIU 09/27/25
Penalty minutes	2 vs LIU 09/27/25
Plus/minus	1 vs LIU 09/26/25

CAREER STATS AND HIGHS

10 • DANICA MARK

F • Jr. • 5-7

Duluth, Minn. / Duluth Marshall School (Union)

MARK, Danica

SEASON	TEAM	GP	G	A	Points	Shots	Shot%	Pen-Min	+/-	PPG	SHG	GWG	Bik	FOW	FOL	FO%
2023-24	UNI	8	0	0	0	4	.000	1 - 2	0	0	0	0	2	16	19	.457
2024-25	UNI	9	1	2	3	10	.100	2 - 4	1	0	0	0	2	18	20	.474
2025-26	UD	2	0	0	0	3	.000	0 - 0	-1	0	0	0	2	11	13	.458
TOTAL FOR UD	2	0	0	0	3	.000	0 - 0	-1	0	0	0	0	2	11	13	.458
TOTAL	19	1	2	3	17	.059	3 - 6	0	0	0	0	0	6	45	52	.464

Single Game Highs

Statistic	Value
Points	1 vs RIT 10/04/24, vs RIT 10/05/24, vs Princeton 01/04/25
Goals	1 vs Princeton 01/04/25
Assists	1 vs RIT 10/04/24, vs RIT 10/05/24
Shots	4 vs RIT 10/04/24
Penalties	1 vs Holy Cross 10/07/23, at Robert Morris 09/27/24, at Vermont 11/20/24
Penalty minutes	2 vs Holy Cross 10/07/23, at Robert Morris 09/27/24, at Vermont 11/20/24
Plus/minus	1 4 times

11 • CHARLIE VOGEL

F • Fr. • 5-6

Sun Prairie, Wisc. / St. Paul's School

VOGE, Charlotte

SEASON	TEAM	GP	G	A	Points	Shots	Shot%	Pen-Min	+/-	PPG	SHG	GWG	Bik	FOW	FOL	FO%
2025-26	UD	2	0	0	0	0	.000	0 - 0	1	0	0	0	0	0	0	.000
TOTAL	2	0	0	0	0	.000	0 - 0	1	0	0	0	0	0	0	0	.000

Single Game Highs

Statistic	Value
Plus/minus	1 vs LIU 09/27/25

13 • KAITLIN FINNEGAN

F • Gr. • 5-4

Tecumseh, Kan. / Kansas Connections Academy (Lindenwood)

FINNEGAN, Kaitlin

SEASON	TEAM	GP	G	A	Points	Shots	Shot%	Pen-Min	+/-	PPG	SHG	GWG	Bik	FOW	FOL	FO%
2020-21	Linden	14	0	1	1	9	.000	5 - 10	-3	0	0	0	5	12	34	.261
2021-22	Linden	26	1	5	6	28	.036	1 - 2	-22	0	0	0	8	77	112	.407
2022-23	Linden	32	3	2	5	48	.063	3 - 6	-15	0	0	0	25	20	31	.392
2023-24	Linden	31	3	8	11	42	.071	8 - 16	-15	1	0	0	17	3	9	.250
2024-25	Linden	4	0	0	0	0	.000	2 - 4	-3	0	0	0	1	1	0	1.000
2025-26	UD	2	1	0	1	8	.125	0 - 0	1	0	0	0	3	0	0	.000
TOTAL FOR UD	2	1	0	1	8	.125	0 - 0	1	0	0	0	0	3	0	0	.000
TOTAL	109	8	16	24	135	.059	19 - 38	-57	1	0	0	0	59	113	186	.378

Single Game Highs

Statistic	Value
Points	2 at Penn St. 11/05/21, at RIT 10/27/23, vs Mercyhurst 12/01/23
Goals	1 8 times
Assists	2 vs Mercyhurst 12/01/23
Shots	6 vs LIU 09/26/25
Power-play Goals	1 vs Robert Morris 02/17/24
Penalties	2 at RIT 01/11/21, vs Stonehill 11/25/23, vs St. Cloud St. 09/21/24
Penalty minutes	4 at RIT 01/11/21, vs Stonehill 11/25/23, vs St. Cloud St. 09/21/24
Plus/minus	3 at RIT 10/27/23

15 • WREN ABBODD

F • Fr. • 5-2

Weymouth, Mass. / Thayer Academy

ABBODD, Wren

SEASON	TEAM	GP	G	A	Points	Shots	Shot%	Pen-Min	+/-	PPG	SHG	GWG	Bik	FOW	FOL	FO%
2025-26	UD	2	0	0	0	1	.000	0 - 0	-1	0	0	0	0	0	0	.000
TOTAL	2	0	0	0	1	.000	0 - 0	-1	0	0	0	0	0	0	0	.000

Single Game Highs

Statistic	Value
Shots	1 vs LIU 09/26/25

16 • EVA MAYO

F/D • Fr. • 5-6

Honeoye Falls, N.Y. / Kent School

MAYO, Eva

SEASON	TEAM	GP	G	A	Points	Shots	Shot%	Pen-Min	+/-	PPG	SHG	GWG	Bik	FOW	FOL	FO%
2025-26	UD	2	0	0	0	1	.000	0 - 0	0	0	0	0	0	0	0	.000
TOTAL	2	0	0	0	1	.000	0 - 0	0	0	0	0	0	0	0	0	.000

Single Game Highs

Statistic	Value
Shots	1 vs LIU 09/27/25
Plus/minus	1 vs LIU 09/27/25

17 • SUVINA HEIDT

D • Fr. • 5-6

Aurora, Colo. / Winchendon School [Mass.]

HEIDT, Suvina

SEASON	TEAM	GP	G	A	Points	Shots	Shot%	Pen-Min	+/-	PPG	SHG	GWG	Bik	FOW	FOL	FO%
2025-26	UD	2	0	0	0	0	.000	0 - 0	-2	0	0	0	2	0	0	.000
TOTAL	2	0	0	0	0	0	.000	0 - 0	-2	0	0	0	2	0	0	.000

18 • FRANCESCA BARRESI

F • Fr. • 5-6

Ottawa, Ontario / St. Joseph Catholic

BARRESI, Francesca

SEASON	TEAM	GP	G	A	Points	Shots	Shot%	Pen-Min	+/-	PPG	SHG	GWG	Bik	FOW	FOL	FO%
2025-26	UD	2	1	0	1	3	.333	1 - 2	-6	0	0	0	2	4	1	.800
TOTAL	2	1	0	1	3	.333	1 - 2	-6	0	0	0	0	2	4	1	.800

Single Game Highs

Statistic	Value
Points	1 vs LIU 09/26/25
Goals	1 vs LIU 09/26/25
Shots	2 vs LIU 09/27/25
Penalties	1 vs LIU 09/26/25
Penalty minutes	2 vs LIU 09/26/25

19 • KATELYNN CHARLTON

F • Fr. • 5-7

Brampton, Ontario / St. Martins Catholic Secondary

CHARLTON, Katelynn

SEASON	TEAM	GP	G	A	Points	Shots	Shot%	Pen-Min	+/-	PPG	SHG	GWG	Bik	FOW	FOL	FO%
2025-26	UD	2	0	1	1	12	.000	0 - 0	0	0	0	0	0	0	0	.000
TOTAL	2	0	1	1	12	.000	0 - 0	0	0	0	0	0	0	0	0	.000

Single Game Highs

Statistic	Value
Points	1 vs LIU 09/27/25
Assists	1 vs LIU 09/27/25
Shots	7 vs LIU 09/27/25

CAREER STATS AND HIGHS

20 • MEERA SMITH

F • Fr. • 5-6

Victoria, British Columbia / Shawnigan Lake School

SMITH, Meera

SEASON	TEAM	GP	G.	A	Points	Shots	Shot%	Pen-Min	+/-	PPG	SHG	GWG	Bik	FOW	FOL	FO%
2025-26	UD	2	0	0	0	2	.000	0 - 0	-5	0	0	0	0	19	17	.528
TOTAL		2	0	0	0	2	.000	0 - 0	-5	0	0	0	0	19	17	.528

Single Game Highs

Statistic	Value
Shots	1 vs LIU 09/26/25, vs LIU 09/27/25

21 • BILLI ROMAN

F • Fr. • 5-3

Hockessin, Del. / The Tatnall School

ROMAN, Billi

SEASON	TEAM	GP	G.	A	Points	Shots	Shot%	Pen-Min	+/-	PPG	SHG	GWG	Bik	FOW	FOL	FO%
2025-26	UD	2	1	0	1	4	.250	0 - 0	1	0	0	0	0	3	2	.600
TOTAL		2	1	0	1	4	.250	0 - 0	1	0	0	0	0	3	2	.600

Single Game Highs

Statistic	Value
Points	1 vs LIU 09/27/25
Goals	1 vs LIU 09/27/25
Shots	3 vs LIU 09/27/25
Plus/minus	1 vs LIU 09/27/25

24 • TAYLOR SCHOOLEY

D • Gr. • 5-6

Moon Township, Pa. / Moon Area

27 • IDA HAAVE

F • Fr. • 5-6

Kristiansand, Norway / Norges Toppidrettsgymnas Lillehammer

HAAVE, Ida

SEASON	TEAM	GP	G.	A	Points	Shots	Shot%	Pen-Min	+/-	PPG	SHG	GWG	Bik	FOW	FOL	FO%
2025-26	UD	2	0	0	0	6	.000	0 - 0	0	0	0	0	2	23	25	.479
TOTAL		2	0	0	0	6	.000	0 - 0	0	0	0	0	2	23	25	.479

Single Game Highs

Statistic	Value
Shots	3 vs LIU 09/26/25, vs LIU 09/27/25

31 • CHARLOTTE PAYNE

G • Fr. • 5-8

Oakville, Ontario / Abbey Park

PAYNE, Charlotte

SEASON	TEAM	GP	G.	A	Points	Shots	Shot%	Pen-Min	+/-	PPG	SHG	GWG	Bik	FOW	FOL	FO%
2025-26	UD	1	0	0	0	0	.000	0 - 0	0	0	0	0	0	0	0	.000
TOTAL		1	0	0	0	0	.000	0 - 0	0	0	0	0	0	0	0	.000

SEASON	TEAM	GP-GS	Minutes	GA	GAAvg	Saves	Save%	W	L	T	Sho	PPG	SHG
2025-26	UD	1 - 1	58.67	3	3.07	22	.880	0	1	0	0	0	0
TOTAL		1 - 1	58.67	3	3.07	22	.880	0	1	0	0	0	0

Single Game Highs

Statistic	Value
Saves	22 vs LIU 09/27/25

35 • SYDNEY BUTLER

G • Sr. • 5-6

Darien, Conn. / AITE

delaware

STARTERS BY GAME

	LEFT WING	CENTER	RIGHT WING	LEFT DEFENSE	RIGHT DEFENSE	GOALIE
LIU	Charlton	Haave	Finnegan	McIntyre	MacIntyre	Robitzer
LIU	Borg	Smith	Barresi	McIntyre	MacIntyre	Payne

Holy Cross

Holy Cross

Penn State

Penn State

Syracuse

Syracuse

Robert Morris

Robert Morris

@ Mercyhurst

@ Mercyhurst

@ Brown

@ Brown

Lindenwood

Lindenwood

@ Union

@ Union

@ RIT

@ RIT

@ Syracuse

@ Syracuse

RIT

RIT

@ Lindenwood

@ Lindenwood

@ Penn State

@ Penn State

Mercyhurst

Mercyhurst

@ Robert Morris

@ Robert Morris

delaware

GAME-BY-GAME STATISTICAL LEADERS

OPP	GOALS	ASSISTS	SOG	BLOCKS	FO WINS	SAVES
LIU	Barresi (1)	--	Finnegan (6)	7 players (2)	Haave (15)	Robitzer (27)
LIU	Finnegan/Roman (1)	Charlton/Lonask/McIntyre (1)	Charlton (7)	Lonask/MacIntyre (2)	Smith (12)	Payne (22)

Holy Cross

Holy Cross

Penn State

Penn State

Syracuse

Syracuse

Robert Morris

Robert Morris

@ Mercyhurst

@ Mercyhurst

@ Brown

@ Brown

Lindenwood

Lindenwood

@ Union

@ Union

@ RIT

@ RIT

@ Syracuse

@ Syracuse

RIT

RIT

@ Lindenwood

@ Lindenwood

@ Penn State

@ Penn State

Mercyhurst

Mercyhurst

@ Robert Morris

@ Robert Morris

delaware

SCORING PLAYS

GAME	GOAL SCORER	ASSIST(S)	TIME & PERIOD	SCORE	SEASON GOAL NUM
LIU	Barresi	--	12:04, 3rd period	2-1, LIU	1
LIU	Finnegan	Charlton	9:53, 1st period	1-0, UD	1
LIU	Roman	Lonask, McInture	10:31, 2nd period	2-0, UD	1



delaware SEASON STATS



2025-26 Delaware Women's Ice Hockey Combined Team Statistics All games

Page 1/1
as of Sep 29, 2025

Team Results

Date	Opponent	Score	Att.
09/26/2025	LIU	L 1-4	752
09/27/2025	LIU	L 2-5	336

Team Statistics

	UD	OPP
SHOT STATISTICS		
Goals-Shot attempts	3-54	9-58
Shot pct.	.056	.155
Goals/Game	1.50	4.50
Shots/Game	27.00	29.00
POWER PLAYS		
Goals-Power Plays	0-11	1-5
Conversion pct.	.000	.200
Shot Attempts	15	8
Shot pct.	.000	.125
SHORT-HANDED		
Goals-Shot attempts	0-0	1-3
Shot pct.	.000	.333
GOAL BREAKDOWN		
Power Play	0	1
Short-handed	0	1
Empty net	0	3
Penalty	0	0
Unassisted	1	5
Overtime	0	0
Delayed Penalty	0	0
Game winning	0	2
First Goal	1	1
Game Tying Goal	0	0
Extra Attacker	0	0
BLOCKS		
Blocks	25	26
Blocks/Game	12.50	13.00
PENALTIES		
Number	5	11
Minutes	10	22
Penalties/Game	2.50	5.50
Pen minutes/Game	5.00	11.00
FACEOFFS (W-L)		
Faceoff W-L pct.	.504	.496
SHOOTOUTS (Made-Att)		
	0-0	0-0

Game Records

Record	Overall	Home	Away	Neutral
ALL GAMES	0-2-0	0-2-0	0-0-0	0-0-0
CONFERENCE	0-0-0	0-0-0	0-0-0	0-0-0
NON-CONFERENCE	0-2-0	0-2-0	0-0-0	0-0-0

#	Player	GP	G	A	PTS	SH	SH%	PEN-MIN	PP	SH	BLK	FOW	FOL	FO%
13	Finnegan, Kaitlin	2	1	0	1	8	.125	0-0	0	0	3	0	0	.000
21	Roman, Billi	2	1	0	1	4	.250	0-0	0	0	0	3	2	.600
18	Barresi, Francesca	2	1	0	1	3	.333	1-2	0	0	2	4	1	.800
19	Charlton, Katelynn	2	0	1	1	12	.000	0-0	0	0	0	0	0	.000
2	Lonask, Lexie	2	0	1	1	4	.000	0-0	0	0	4	0	0	.000
4	McIntyre, Tiana	2	0	1	1	1	.000	0-0	0	0	0	0	0	.000
27	Haave, Ida	2	0	0	0	6	.000	0-0	0	0	2	23	25	.479
9	Gray, Bailey	2	0	0	0	4	.000	1-2	0	0	3	0	0	.000
6	Blum, Kacey	2	0	0	0	3	.000	0-0	0	0	1	0	0	.000
10	Mark, Danica	2	0	0	0	3	.000	0-0	0	0	2	11	13	.458
20	Smith, Meera	2	0	0	0	2	.000	0-0	0	0	0	19	17	.528
8	Borg, Victoria	2	0	0	0	1	.000	1-2	0	0	2	0	0	.000
15	Abboud, Wren	2	0	0	0	1	.000	0-0	0	0	0	0	0	.000
5	MacIntyre, Emma	2	0	0	0	1	.000	0-0	0	0	4	0	0	.000
16	Mayo, Eva	2	0	0	0	1	.000	0-0	0	0	0	0	0	.000
3	Bonavita, Maddie	2	0	0	0	0	.000	2-4	0	0	0	0	1	.000
17	Heidt, Suvina	2	0	0	0	0	.000	0-0	0	0	2	0	0	.000
1	Robitzer, Mattie	1	0	0	0	0	.000	0-0	0	0	0	0	0	.000
31	Payne, Charlotte	1	0	0	0	0	.000	0-0	0	0	0	0	0	.000
11	Voge, Charlotte	2	0	0	0	0	.000	0-0	0	0	0	0	0	.000
TM	TEAM	2	0	0	0	0	.000	0-0	0	0	0	0	0	.000
Totals		2	3	3	6	54	.056	5-10	0	0	25	60	59	.504
Opponents		2	9	7	16	58	.155	11-22	1	1	26	59	60	.496

#	Player	GP	MIN	GA	GA AVG	SAVES	SAVES%	W-L-T-SHO
1	Robitzer, Mattie	1	58:25	3	3.08	27	.900	0-1-0-0
31	Payne, Charlotte	1	58:40	3	3.07	22	.880	0-1-0-0
TM	EMPTY NET	-	02:55	3	61.71	0	.000	0-0-0-0
Totals		2	120:00	9	4.50	49	.845	0-2-0-0
Opponents		2	120:00	3	1.50	51	.944	2-0-0-0

Attendance Summary

	UD	Opponents
Total	1088	0
Dates/Avg Per Date	2 / 544	0 / 0
Neutral Site #/Avg	0 / 0	

Goals by Periods

Team	1st	2nd	3rd	OT	TOTAL
UD	1	1	1	0	3
Opponents	0	4	5	0	9

Shots by Periods

Team	1st	2nd	3rd	OT	TOTAL
UD	12	12	30	0	54
Opponents	14	30	14	0	58

Saves by Periods

Team	1st	2nd	3rd	OT	TOTAL
UD	14	26	9	0	49
Opponents	11	11	29	0	51

delaware NCAA RANKINGS

Statistic	National Rank	Conference Rank	Value	National Leader	Value	Conference Leader	Value
Assists (27 ranked)	25	6	3	St. Thomas (MN)	32	Mercyhurst	23
Goals (30 ranked)	24	6	3	St. Thomas (MN)	19	Mercyhurst	13
Penalty Killing Pct. (32 ranked)	23	5	0.800	11 teams tied	1.000	RIT	1.000
Power Play Goals (14 ranked)				RIT	7	RIT	7
Power-Play Percentage (22 ranked)	22	6	0.000	RIT	0.538	RIT	0.538
Scoring Defense (32 ranked)	27	7	4.50	Northeastern Union (NY)	0.00 0.00	RIT	0.50
Scoring Margin (32 ranked)	25	5	-3.00	Minnesota	8.50	RIT	4.50
Scoring Offense (29 ranked)	22	5	1.50	Minnesota	9.00	RIT Robert Morris	5.00 5.00
Short-Handed Goals (1 ranked)				4 teams tied	1	RIT	1
Team Assists (0 ranked)							
Team Faceoff win percentage (32 ranked)	17	5	0.504	Robert Morris	0.700	Robert Morris	0.700
Team Goals Against Average (30 ranked)	27	7	4.500	Northeastern Union (NY)	0.000 0.000	RIT	0.500
Team Penalty Minutes Per Game (32 ranked)	24	6	5.00	Saint Anselm	17.00	Robert Morris	14.50
Team Points (30 ranked)	25	6	6	St. Thomas (MN)	51	Mercyhurst	36
Team Saves (32 ranked)	20	4	49	Post	183	Lindenwood	146
Team Shutouts (4 ranked)				Minn. Duluth St. Cloud St. Union (NY)	2 2 2	Mercyhurst Penn St. RIT	1 1 1
Tm. Short-Handed Goals (0 ranked)							
Winning Percentage (22 ranked)	22	5	0.000	15 teams tied	1.000	Penn St. RIT Robert Morris	1.000 1.000 1.000

delaware NCAA RANKINGS

Statistic	Player	National Rank	Conference Rank	Value	National Leader	Value	Conference Leader	Value
Assists per Game (18 ranked)					Ava Lindsay, Minnesota	3.00	Jessica MacKinnon, Robert Morris	2.00
Faceoff wins (170 ranked)	Ida Haave Meera Smith Danica Mark Francesca Barresi Billi Roman	19 26 70 127 132	7 9 20 32 33	23 19 11 4 3	Sabrina Beaudoin, Rensselaer	59	Regina Metzler, Mercyhurst	38
Game Winning Goals (3 ranked)					Rylee Bartz, St. Thomas (MN) Caitlin Kraemer, Minn. Duluth	2 2	8 players tied	1
Goalie Winning Pct. (24 ranked)					23 players tied	1.000	5 players tied	1.000
Goals Against Average (25 ranked)					8 players tied	0.000	Sophia Bellina, RIT	0.000
Goals per Game (35 ranked)	Francesca Barresi Kaitlin Finnegan Billi Roman	35 35 35	7 7 7	0.50 0.50 0.50	Abbey Murphy, Minnesota Maggie Scannell, Wisconsin Stryker Zablocki, Northeastern	2.00 2.00 2.00	Alaina Giampietro, Robert Morris	1.50
Penalties (55 ranked)	Maddie Bonavita Francesca Barresi Victoria Borg Bailey Gray	16 55 55 55	3 15 15 15	2 1 1 1	Kendal Davidson, Rensselaer	4	Sofia Ljung, Mercyhurst Linnea Misner, Robert Morris	3 3
Points per Game (49 ranked)					Abbey Murphy, Minnesota	4.50	Jessica MacKinnon, Robert Morris	2.50
Power Play Goals (2 ranked)					Lauren Goldsworthy, Minnesota St.	2	12 players tied	1
Save Percentage (49 ranked)	Mattie Robitzer Charlotte Payne	34 41	8 11	0.900 0.880	8 players tied	1.000	Sophia Bellina, RIT	1.000
Short-Handed Goals (1 ranked)					4 players tied	1	Tilli Keraenen, RIT	1
Shutouts (2 ranked)					Ãve Gascon, Minn. Duluth	2	Tara Bach, Mercyhurst Sophia Bellina, RIT Katie DeSa, Penn St.	1 1 1

delaware TV ROSTER



1
MATTIE ROBITZER
Jr.
G | 5-4
Kennett Square, Pa.
Unionville
(Northeastern)



2
LEXIE LONASK
Fr.
D | 5-8
Chandler, Ariz.
Shattuck St. Mary's



3
MADISON BONAVITA
Fr.
F | 6-0
Longmeadow, Mass.
Milton Academy



4
TIANA MCINTYRE
Sr.
D | 5-8
Park City, Utah
Park City
(Quinnipiac)



5
EMMA MACINTYRE
Fr.
D | 5-4
Halifax, Nova Scotia
Stanstead College



6
KACEY BLUM
Fr.
F | 5-6
McLean, Va.
McLean



8
VICTORIA BORG
Fr.
F | 5-4
Burlington, Ontario
Blyth Academy



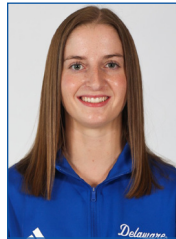
9
BAILEY GRAY
Fr.
D | 5-4
Plymouth, Minn.
Benilde-St. Margaret's



10
DANICA MARK
Jr.
F | 5-7
Duluth, Minn.
Duluth Marshall School
(Union)



11
CHARLIE VOGUE
Fr.
F | 5-6
Sun Prairie, Wisc.
St. Paul's School



13
KAITLIN FINNEGAN
Gr.
F | 5-4
Tecumseh, Kan.
Kansas Connections Academy
(Lindenwood)



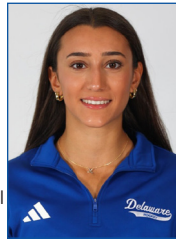
15
WREN ABBODD
Fr.
D | 5-2
Weymouth, Mass.
Thayer Academy



16
EVA MAYO
Fr.
F/D | 5-6
Honeoye Falls, N.Y.
Kent School



17
SUVINA HEIDT
Fr.
D | 5-6
Aurora, Colo.
Winchendon School



18
FRANCESCA BARRESI
Fr.
F | 5-6
Ottawa, Ontario
St. Joseph Catholic



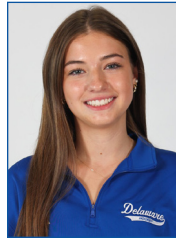
19
KATELYNN CHARLTON
Fr.
F | 5-7
Brampton, Ontario
St. Martins Catholic



20
MEERA SMITH
Fr.
F | 5-6
Victoria, B.C.
Shawnigan Lake School



21
BILLI ROMAN
Fr.
F | 5-3
Hockessin, Del.
The Tatnall School



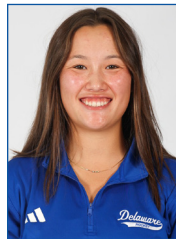
24
TAYLOR SCHOOLEY
Fr.
D | 5-6
Moon Township, Pa.
Moon Area



27
IDA HAAVE
Fr.
F | 5-6
Kristiansand, Norway
Lillehammer



31
CHARLOTTE PAYNE
Fr.
G | 5-8
Oakville, Ontario
Abbey Park



35
SYDNEY BUTLER
Sr.
G | 5-6
Darien, Conn.
AITE



ALLISON COOMEY
Head Coach
1st Season
Niagara '02



MELISSA SAMOSKEVICH
Assistant Coach
1st Season
Quinnipiac '19



TAYLOR WILLARD
Assistant Coach
1st Season
Vermont '18



MICHEL LAROCQUE
Vol. Goalie Coach
1st Season
Boston U. '99