



## GAME #23



FEBRUARY 9, 2022

10/11 BAYLOR (17-5, 7-3) vs.  
RV/RV KANSAS STATE (17-6, 7-4)February 9, 2022 • 7 p.m. (CT)  
Waco, Texas | Ferrell CenterWATCH: Big 12 Now on ESPN+  
Talent: Lincoln Rose (xpr), Jim Haller (analyst), Brooke Bednarz (reporter)LISTEN: ESPN Central Texas  
Talent: Derek Smith (PBP), Sophia Young-Malcolm (Analyst)

## SERIES MATCHUP

All-Time Series Baylor leads, 40-9

Waco 17-1  
Manhattan 14-5  
Neutral 10-3  
First Meeting K-State won, 75-62, in Wichita Nov. 30, 1984  
Last Meeting K-State won, 68-59, in Manhattan Jan. 2, 2022

## TEAM INFORMATION

#10/11 BAYLOR BEARS (17-5, 7-3)

Location: Waco, Texas Conference: Big 12  
Head Coach: Nicki Collen (Marquette, 1998; 1st season)  
Career Record: 17-5 BU Record: Same

#RV/RV KANSAS STATE WILDCATS (17-6, 7-4)

Location: Manhattan, Kan.  
Conference: Big 12  
Head Coach: Jeff Mittie (Missouri Western, 1989; 8th season)

## BEARS

## SCHEDULE &amp; RESULTS

DATE	BU	OPP	OPPONENT	TV	TIME/RESULT
N 9	7/8	-	TEXAS STATE	ESPN+	W, 77-70
N 11	7/8	-	at UT Arlington	ESPN+	W, 81-54
N 15	7/8	-	NEW ORLEANS	ESPN+	W, 78-39
N 21	6/8	3/5	at Maryland	Big Ten Network	L, 76-79
N 25	6/8	-	vs. Fordham !	FloHoops	W, 68-45
N 26	6/8	-	vs. Arizona State !	FloHoops	W, 62-52
N 27	6/8	-	vs. Houston !	FloHoops	W, 74-58
N30	5/8	-	MOREHEAD STATE	ESPN+	W, 73-28
D 4	5/7	-	MISSOURI ^	ESPN+	W, 70-68
D 8	5/6	-	ALCORN STATE	ESPN+	W, 94-40
D 19	5/5	11/13	vs. Michigan \$	ESPN	L, 68-74 (OT)
D 29	10/10	-	NORTH TEXAS	ESPN+	W, 86-65
J 2	10/10	-	at Kansas State *	ESPN+	L, 68-59
J 12	14/1323/25	-	at Oklahoma *	Bally Sports Okla.	L, 83-77
J 16	14/13	-	at Kansas *	ESPN+	W, 82-79
J 19	15/16	-	OKLAHOMA STATE *	ESPN+	W, 67-49
J 23	15/167/7	-	IOWA STATE *	ESPN2	W, 87-61
J 26	11/14	-	at Texas Tech *	ESPN+	W, 88-80
J 29	11/14	-	at West Virginia *	ESPN+	W, 87-54
F 2	9/12	18/18	OKLAHOMA *	ESPN+	L, 78-77
F 4	9/12	13/13	TEXAS *	ESPN2	W, 75-63
F 6	9/12	13/13	at Texas *	ESPN2	W, 63-55
F 9	10/11rv/rv	-	KANSAS STATE *	ESPN+	7PM
F 12	10/11	-	WEST VIRGINIA *	ESPN+	5PM
F 16	-	-	TCU *	ESPN+	7PM
F 19	-	-	at TCU *	ESPN+	1PM
F 23	-	-	at Oklahoma State *	ESPN+	6:30PM
F 26	-	-	KANSAS *	ESPN+	2PM
F 28	-	-	at Iowa State *	ESPN2	6PM
M 6	-	-	TEXAS TECH *	ESPN+	2PM

\* Big 12 Conference Game

! Cancun Challenge

\$ Hall of Fame Women's Showcase

^ SEC/Big 12 Challenge

TV COVERAGE: Big 12 Now on ESPN+

## SOCIAL MEDIA

@BaylorWBB • #SicEm

## LIVE STATISTICS

BaylorStats.com

## GAMEDAY CENTRAL

BaylorBears.com

## BAYLOR ATHLETICS COMMUNICATIONS

KRISTA PIRTLE

Associate Director

C: 254-447-8610

E: Krista\_Pirtle@Baylor.edu

## STORY LINES

## TEXAS TWO STEP

- Baylor became the first team since 1999 to defeat a ranked opponent twice in three days as the Bears took down then-ranked No. 13 Texas, 75-63 (2/4) and 63-55 (2/6).
- Nalyssa Smith combined to put up 53 points off 21-of-30 (70%) shooting from the floor and a perfect 10-for-10 mark from the free-throw line as well as pull down 21 rebounds.
- BU never trailed in the first contest between the rivals on 2/4. The Bears started fast with an eight-point advantage after the first quarter and never looked back. Baylor scored 25 points off 20 Texas turnovers.
- It was a different beginning but the same result in the second game as the Bears got off to a sluggish start, only making seven field goals in the first half for 18 points. Baylor came out of the half and made their first 10 shots of the third quarter to come from as many as 10 points down in the third to secure the eight-point victory.
- Another key to Baylor's victory on Sunday in Austin was its 11-of-12 showing from the charity stripe in the fourth quarter alone. For the series, BU combined for a 38-43 (88.4%).

## WALKING DOUBLE-DOUBLE

- Nalyssa Smith is fifth in the country with 15 double-doubles on the season.
- Smith is fourth in program history with 43 career double-doubles. She's six away from tying Maggie Davis-Stinnett (1986-89, 1990-91)
- The senior is averaging 20.8 points and 11.4 rebounds per game which ranks No. 11 and No. 14 in the country, respectively.
- Smith was recently named to the Wooden Award Late Season Top 20 Watch List as well as the Naismith Award Midseason Watch List.

## LET IT FLY

- Baylor's program record for triples made came on Dec. 18, 2019 against Arkansas State when Juicy Landrum caught fire and set an NCAA record with 14 triples. Besides that record-setting performance, BU hadn't drained more than a dozen shots from deep since 2011.
- BU's record for 3-point attempts in a season came in 2013-14 when the Bears attempted 596 3s.
- From that season to 2020-21, Baylor made 10 or more 3-pointers in a game only five times across a total of 281 games (1.78 percent). BU has done so four times this season.
- At Kansas, Baylor nearly set a record with a 14-for-29 display from the perimeter. BU's 14 treys marked the second most in program history.
- Prior to this year, only 14 Bears had made six or more 3s in a game. Two of them had done it multiple times (Makenzie Robertson, 2012, 2014) and Jennifer King (1990, 1991, 1993).
- Sarah Andrews and Ja'Mee Asberry have already joined that elite club this season. Andrews went 6-for-8 against Morehead State and from deep and Asberry fired off 6-of-8

## SIC'EM™

## BAYLOR RECORD &amp; TITLES SINCE 2010-11

YEAR	OVERALL W-L	BIG 12 W-L	B12 REG SEASON TITLE	B12 TOURNAMENT TITLE
2010-11	34-3	15-1	✓	✓
2011-12*	40-0	18-0	✓	✓
2012-13	34-2	18-0	✓	✓
2013-14	32-5	16-2	✓	✓
2014-15	33-4	16-2	✓	✓
2015-16	36-2	17-1	✓	✓
2016-17	33-4	17-1	✓	✓
2017-18	33-2	18-0	✓	✓
2018-19*	37-1	18-0	✓	✓
2019-20	28-2	17-1	✓	✓
2020-21	28-3	17-1	✓	✓
TOTALS	368-28	187-9	11X	8X

## PROJECTED STARTING 5

## #24 SARAH ANDREWS

PPG: 12.3 RPG: 3.2 APG: 3.9  
.414/.434/.681

## #21 JA'MEE ASBERRY

PPG: 10.1 RPG: 2.6 APG: 1.9  
.399/.394/.842

## #3 JORDAN LEWIS

PPG: 11.4 RPG: 3.4 APG: 5.2  
.426/.330/.653

## #1 NALYSSA SMITH

PPG: 20.8 RPG: 11.4 APG: 1.2  
.542/.261/.764

## #4 QUEEN EGBO

PPG: 9.9 RPG: 7.9 APG: 0.9  
.477/.000/.788

## KANSAS STATE POSSIBLE STARTING FIVE

3 Jaelyn Glenn  
7.7 PPG, 4.1 RPG, 2.4 APG4 Serena Sundell  
10.1 PPG, 3.3 RPG, 5.9 APG5 Brylee Glenn  
8.5 PPG, 2.6 RPG, 1.5 APG24 Emilee Ebert  
5.4 PPG, 3.5 RPG, 3.0 APG50 Ayoka Lee  
24.7 PPG, 10.4 RPG, 0.7 APG

## QUICK FACTS

## GENERAL INFORMATION

Location:	Waco, Texas
Chartered:	1845, by the Republic of Texas
Enrollment:	19,297
President:	Dr. Linda Livingstone
Faculty Representative:	Dr. Carson Mencken
Athletic Director:	Mack B. Rhoades, IV
SWA:	Dawn Rogers
Sport Administrator:	Jovan Overshown
Conference:	Big 12
Nickname:	Bears
Colors:	Green (3435C) and Gold (1235C)
Arena (capacity):	Ferrell Center (10,284)
Ferrell Center Press Row:	254-652-3092
Athletic Department:	254-710-1234
Ticket Office:	254-710-1000

## WOMEN'S BASKETBALL HISTORY

First Season:	1974-75
All-Time Record:	1,025-502 (.671) / 46th season
Ferrell Center Record:	414-98 (.808)
Overall NCAA Tournament Record:	53-16 (.779)
NCAA Tournament Appearances:	19
Final Four Appearances:	4 (2005, '10, '12, '19)
NCAA Championships:	3 (2005, 2012, 2019)
Last NCAA Appearance:	2021, NCAA Elite Eight (lost to No. 1 seed UConn, 69-67)
Postseason WNIT Appearances:	3
Last WNIT Appearance:	2003 (lost to Auburn, WNIT finals)
Conference Titles (Last):	12 (2021)
Conference Tournament Titles (Last):	11 (2021)

## 2020-21 REVIEW

2020-21 Overall Record:	28-3
2020-21 Big 12 Record (Finish):	17-1 (1st)
2020-21 Postseason:	Elite Eight

## WOMEN'S BASKETBALL STAFF

Head Coach:	Nicki Collen (Marquette, 1998)
Record at Baylor:	17-5 1st season
Career Record:	17-5 1st season
Assistant Coach:	Tari Cummings
Assistant Coach:	Tony Greene
Assistant Coach:	Chloe Pavlech
Asst. AD of Operations:	Michael Motta
Asst. Dir. of Operations:	Micah Odom
Asst. AD of Player Dev.:	Sophia Young-Malcolm
Director of Video Operations:	Aaron Sternecker
Dir. of WBB Recruiting Content:	Carolina Escobedo
Athletic Trainer:	Chalisa Fonza
Strength & Conditioning Coach:	Jeremy Heffner
Athletics Communications:	Krista Pirtle

## STORY LINES

against Alcorn State. **Asberry** then went 6-for-11 at Kansas, and **Andrews** set a career-high with a 7-for-10 mark.

- **Andrews'** seven 3s tied for third in program history. She is now one of six Bears in program history to hit a minimum of seven triples in a game.
- **Andrews** is currently No. 6 in the nation in 3-point percentage at 47 percent.
- **Jordan Lewis** joined the club with her 6-of-7 performance against Iowa State.

## QUICK HITS

- **Jordan Lewis** became the third Bear in program history to notch a triple-double as the grad transfer put up 10 points, 10 boards and 11 assists at West Virginia (1/29). Her triple-double was the first since Alexis Jones did so against Oklahoma (1/29/17) and the seventh overall in program history.
  - She was named the Big 12 Player of the Week, Lewis had just the second 10 point, 10 rebound, 11 assist game in a Big 12 matchup, joining Shalee Lehning (Kansas State, 2009).
  - Baylor picked up its first ranked win - and top-10 win - of the **Nicki Collen** era with an 87-61 victory over then-ranked No. 7 Iowa State on Sunday. It marked the worse loss since 2018 for the Cyclones.
  - Down by four with 20 seconds on the clock, Baylor went on a 7-0 run - five of those points coming from **Ja'Mee Asberry** - as the Bears clawed their way to their first Big 12 win of the season at Kansas.
  - **Sarah Andrews** and **Asberry** became the first BU teammates ever in program history to hit a minimum of six 3s each in the same game (Kansas).
  - With its win over Missouri on Saturday, Baylor is 5-1 in Big 12/SEC Challenge games.
  - For the first time since Dec. 19, 2020, Baylor held an opponent to under 30 total points (24, McNeese State) against Morehead State. It also marked the first time since that game that BU held an opponent to four single-digit scoring quarters.
  - **Jordan Lewis** and **NaLyssa Smith**, along with 28 others, were named candidates for the 2021-22 Senior CLASS Award. The award recognizes a senior NCAA Division I player who demonstrates excellence in the community, the classroom, character and competition.
  - **Smith** was named the Big 12 Player of the Week after averaging 19 points and 15.3 points per game through three games in Mexico.
  - Baylor went 3-0 in the Cancun Challenge, playing three games in three days over Thanksgiving break. **Smith**, **Lewis** and **Queen Egbo** were named to the 2021 Cancun Challenge Mayan Division All-Tournament Team. **Smith** was also named the Division's MVP.
  - No. 6 Baylor had a shot to send the game to overtime in the final seconds, but the 3-pointer from the left wing barely missed to give No. 3 Maryland the 79-76 win. The Terps led, 76-65, with 2:45 left in the game. **Lewis** answered with six-straight points, and **Smith** added a bucket with 1:30 to play. Then it was **Lewis** again with 38 seconds remaining with a 3-pointer to cut Maryland's lead to three.
- Baylor's defense got the stop without fouling on the other end to set up the chance for the tie.
- A second-half surge propelled the Bears to a 27-point win on the road over UT Arlington for BU's second game in three days to open the season. Baylor led the Lady Mavs by six at the half before holding the home team to a total of 22 points in the second half. **Smith** became the first Big 12 player of the season to record a 20/10 performance that game, while **Ja'Mee Asberry** hit five triples. **Caitlin Bickle** had an all-around game for Baylor as she finished with seven points, eight rebounds, three assists, two blocks and a couple of charges.

- BU opened the **Nicki Collen** era with a win over Texas State. **Collen** came to Baylor from the WNBA's Atlanta franchise, where she spent the last three seasons at the helm for the Dream. Her first year in Atlanta resulted in a 23-11 season in 2018, where she earned WNBA Coach of the Year honors and helped the team to the WNBA Playoff Semifinals.

## THE BAYLOR BEARS REGIME

## 2019 NCAA CHAMPIONS

The 2018-19 Bears became just the third women's program in NCAA history to win three titles when Baylor beat Notre Dame 82-81 April 7 in Tampa, Fla. **Chloe Jackson's** go-ahead scoop layup with under five seconds left propelled her to NCAA Final Four Most Outstanding Player honors to go along with a team-high 26 points in the game. The Bears rode the wave of two All-American posts with **Kalani Brown** and **Lauren Cox** each earning multiple all-America honors. The pair led Baylor to its 10th regular-season and tournament championship in the Big 12 and **Kim Mulkey** was honored as national coach of the year by the USBWA, the *Associated Press* and the WBCA.

## 2012 NCAA CHAMPIONS

The 2011-12 Bear season was as perfect as it could be. En route to claiming its second NCAA Championship in seven years, Baylor ran the table, posting an unprecedented 40-0 mark and claiming both Big 12 Conference crowns. **Brittney Griner** and **Mulkey** swept player of the year and coach of the year honors, earning WBCA, USBWA, Associated Press, Naismith and Big 12 Conference recognition. Baylor was ranked No. 1 wire-to-wire in both polls and raced through conference play with a Big 12-record 18-0 mark. **Griner** and **Odyssey Sims** were named consensus All-Americans, while **Destiny Williams** was a WBCA All-America honorable mention honoree.

## 2005 NCAA CHAMPIONS

The squad posted a 33-3 record and claimed the Big 12 Conference title with a 14-2 mark. En route to the program's first NCAA Championship, the Bears defeated three No. 1 seeds. **Steffanie Blackmon** and **Sophia Young** were both named All-Americans. In addition to earning Big 12 Coach of the Year honors, **Mulkey** received the New York Athletic Club's prestigious Winged Foot Award.

## NCAA TOURNAMENT STAPLE &amp; 11+-YEAR DOMINANCE

- The Bears have made 17 consecutive NCAA Tournament appearances and 19 overall. Those appearances have resulted in three national championships (2005, 2012, 2019), four Final Fours (2005, 2010, 2012, 2019), 10 Elite Eights and 14 Sweet Sixteens.
- The Bears are 23-time Big 12 Champions - most in Big 12 history - capturing 11 consecutive regular season titles, 12 overall & 11 tournament titles.
- Baylor is 381-33 (.928) over the past 12 seasons while posting a 190-12 mark in Big 12 play and 27-1 (.964) in Big 12 Tournament play.
- 327 of Baylor's 381 wins since 2010-11 have been by 10 or more points, and only 19 times in that span has its winning margin been five or fewer points.

## BIG 12 DYNASTY

- Baylor women's basketball has won a league-leading 23 Big 12 Conference titles, 12 regular season and 11 tournament championships.
- Baylor has run the table in the conference four times (2012, 2013, 2018, 2019). It has only happened six times in Big 12 history (Oklahoma: 16-0 in 2006; Nebraska: 16-0 in 2010).
- Baylor has advanced to the Big 12 Championship game 10 times in a row and 14 times in program history.
- The Bears have won nine of the last 10 Big 12 Championship titles, besting No. 17/20 West Virginia, 76-50, in the 2021 final.

## HEAD COACH NICKI COLLEN • 1ST SEASON



Nicki Collen was introduced as the fifth Head Coach in Baylor women's basketball history on May 5, 2021.

Collen comes to Baylor from the WNBA's Atlanta franchise, where she spent the last three seasons at the helm for the Dream. Her

rookie season in Atlanta resulted in a 23-11 season in 2018, where she earned WNBA Coach of the Year honors and helped the franchise to the WNBA Playoff Semifinals.

Prior to her arrival in Atlanta, she spent two seasons under head coach Curt Miller of the Connecticut Sun, helping the franchise improve from fifth in the East Division to second from 2016 to 2017, respectively.

"I am thrilled to be the head coach at Baylor University. I believe it is the top job in the country for women's basketball," said Collen. "I am excited to begin working with this extremely talented team and I am grateful for the unwavering support of President Livingstone and Mack Rhoades. The success of this program speaks for itself, and I will begin working today to ensure Baylor women's basketball continues to be a program that excels at the highest levels."

Collen's collegiate coaching career spanned for nine seasons prior to her WNBA arrival. She spent two seasons as an assistant at Colorado State from 2000-2002, one season at Ball State from 2002-2003, one at Louisville from 2003-2004, three at Arkansas from 2011-2014 and two at Florida Gulf Coast from 2014-2016.

Her teams' combined record in nine seasons as an NCAA Division I assistant was 214-74, good for a .743 win percentage. As an assistant, Collen guided four different squads to the NCAA Tournament, reaching the second round in three of those seasons.

She spent six of her nine seasons as an assistant under her husband, Tom Collen's head-coaching tenures at Colorado State, Louisville and Arkansas. She also coached under Tracy Roller at Ball State and Karl Smesko at Florida Gulf Coast, who has the third-highest active winning percentage in NCAA Division I. Collen helped the FGCU program to a 64-9 record and the school's first NCAA Tournament win in her two-year tenure.

In her nine seasons at the collegiate level, Collen coached three All-Americans and saw three players selected in the WNBA Draft.

Collen's collegiate playing career began at Purdue in 1993-94, when the Boilermakers made an NCAA Final Four run with a 29-5 overall record and a 16-2 mark in the Big Ten. Her sophomore season, Purdue made another deep run with an Elite Eight appearance to go with a 24-8 overall record. She transferred to Marquette, where she tallied 421 assists in her final two seasons, averaging 7.0 per game in her last 60 collegiate games. She helped the Golden Eagles to two-straight NCAA Tournament appearances in 1997 and 1998.

Nicki and her husband Tom have three children, Connor, Reese and Logan.

## WHAT THEY'RE SAYING ABOUT NICKI COLLEN

"Nicki Collen is a great hire for Baylor. A well-respected basketball mind in the WNBA, she has the knowledge and work-ethic to succeed at one of the top programs in women's college basketball.

Much like the woman who preceded her, Collen is a fiery competitor with a big personality. She is a nice fit for Baylor."

—Rebecca Lobo, ESPN Analyst, former NCAA Champion

"Nicki made an immediate impression as a head coach in the WNBA and it was a big challenge to coach against her. She likes an up tempo game, is innovative, and will bring a great style to Baylor Basketball. She is known for being direct and honest with her players in order to get the best from them on and off the court. I'm looking forward to watching her continue the great tradition of Baylor Basketball."

—Mike Thibault, Connecticut Sun Head Coach

"Congrats to the Baylor Administration on hiring Nicki Collen as their next basketball coach! Nicki is a detailed strategist and a relationship builder with a tireless work ethic. Coach Collen will bring more winning success to the student athletes on and off the court and the Lady Bear fans will be entertained with a fast paced offensive style of play! Buckle up for some intense, high octane offense!"

—Debbie Antonelli, ESPN Analyst

"Nicki has a brilliant basketball mind and a tremendous ability to connect with players. Nicki is high-energy, self-motivated, and ultra-competitive. She will do great things at Baylor."

—Karl Smesko, Florida Gulf Coast Head Coach

"Nicki Collen is one of the best basketball minds I've covered over the years. Her depth of knowledge and understanding of the x's and o's is second to none. Coupled with vast experience at various levels on the college and WNBA side, there will be more Big 12 Championships in Baylor's future."

—LaChina Robinson, ESPN Analyst

"The Lady Bears program is always near and dear, and I am excited to see what Coach Collen will do on the sidelines in Waco. Fans can expect some fiery defensive skills for Coach C!"

—Kalani Brown, Atlanta Dream player, former Lady Bear

"I was really looking forward to working with Coach Collen in the WNBA, and while I didn't get that chance, I couldn't be happier for her to join our alma mater and lead the Lady Bears. I am excited to see her in the green and gold."

—Odyssey Sims, Atlanta Dream player, former Bear

"Today is an exciting day for Baylor University and our women's basketball program. Nicki is a passionate leader of young women and an elite basketball mind and teacher of the game. She is a great mission fit who shares in our vision of Preparing Champions for Life by commanding excellence both on and off the court. Nicki's professional experience will be invaluable to developing players for the next level. Her addition sustains our commitment to the women's basketball program at the highest level. We welcome Nicki, her husband Tom and children, Connor, Reese and Logan, to the Baylor family."

—Mack Rhoades, Baylor Vice President & Director of Athletics

"We are excited to have Nicki lead our women's basketball program, and we look forward to welcoming her into the Baylor Family. I appreciate the work of Mack Rhoades and his team in identifying our next coach who understands our commitment to an elite program, aligns with Baylor's Christian mission and appreciates how we prepare champions for life at our University. After visiting personally with Coach Collen, I can't wait to see her and our student-athletes as they represent our great University both on the court and inside the classroom as well as throughout the Waco community."

—Baylor President Linda A. Livingstone, Ph.D

## NICKI COLLEN

**Education:** Marquette, 1998, Mechanical Engineering

**Family:** Husband, Tom; Children, Connor, Reese & Logan

## EXPERIENCE

Purdue (Player), 1993-95  
Marquette (Player), 1996-98  
BCM Alexandros, Greece (Player), 1998-99  
Colorado State (Assistant Coach), 2000-02  
Ball State (Assistant Coach), 2002-03  
Louisville (Assistant Coach), 2003-04  
Arkansas (Assistant Coach), 2011-14  
Florida Gulf Coast (Assistant Coach), 2014-16  
Connecticut Sun (WNBA, Assistant Coach), 2016-17  
Atlanta Dream (WNBA, Head Coach), 2018-20  
Baylor (Head Coach) 2021-present

## HIGHLIGHTS

- 2018 WNBA Coach of the Year
- July 2018 WNBA Coach of the Month
- August 2018 WNBA Coach of the Month
- 2018 WNBA Semifinals
- 2017 WNBA Playoffs Second Round as Assistant
- Four NCAA Tournament Appearances as Assistant
- Three WNIT Appearances as Assistant

## Collegiate All-Americans Coached

2002	Angie Gorton	Colorado State
2004	Sara Nord	Louisville
2016	Whitney Knight	Florida Gulf Coast

## WNBA Draft Picks Coached in College

2003	Tamara Bowie	Washington
2012	C'eira Ricketts	Phoenix
2016	Whitney Knight	Los Angeles

## WNBA All-Stars Coached

2017	Jasmine Thomas	Connecticut
2017	Alyssa Thomas	Connecticut
2018	Angel McCoughtry	Atlanta

## HEAD WNBA COACHING YBY RECORD

Year	Franchise	Conference	OVRL	Postseason
2018	Atlanta	Eastern	23-11	WNBA Semifinals
2019	Atlanta	Eastern	8-26	
2020	Atlanta	Eastern	7-15	
<b>Totals</b>		<b>3 Seasons</b>	<b>38-52</b>	<b>1 Appearance</b>

## ASST. WNBA COACHING YBY RECORD

Year	Franchise	Conference	OVRL	Postseason
2016	Connecticut	Eastern	14-20	
2017	Connecticut	Eastern	21-13	WNBA 2nd Round
<b>Totals</b>		<b>2 Seasons</b>	<b>38-52</b>	<b>1 Appearance</b>

## ASST. COACHING YEAR-BY-YEAR RECORD

Year	School	Overall	Conf	Postseason
2000-01	Colorado State	25-7	10-4	NCAA-Second
2001-02	Colorado State	24-7	12-2	NCAA-First
2002-03	Ball State	18-8	12-4	WNIT-Second
2003-04	Louisville	20-10	11-3	WNIT-First
2011-12	Arkansas	24-9	10-6	NCAA-Second
2012-13	Arkansas	20-13	6-10	WNIT-Second
2013-14	Arkansas	19-11	6-10	
2014-15	Florida Gulf Coast	31-3	14-0	NCAA-Second
2015-16	Florida Gulf Coast	33-6	14-0	WNIT-Finals
<b>Totals</b>	<b>9 Seasons</b>	<b>214-74</b>	<b>95-39</b>	<b>8 Appearances</b>

## HEAD COACHING YEAR-BY-YEAR RECORD

Year	School	Overall	Conf	Postseason
2021-22	Baylor	17-5	7-3	
<b>Totals</b>	<b>1 Season</b>	<b>17-5</b>	<b>7-3</b>	



**ROSTER INFORMATION**

**PRONUNCIATION GUIDE**

NaLyssa - NUH-lissa  
 Egbo - egg-BOH  
 Andrea - ANNE-dree-uh  
 Katramados - cat-truh-MOD-os  
 Ja'Mee - Jamie  
 Gillispie - guh-LESS-pe  
 Bickle - BICK-uhl  
 Collen - CALL-in  
 Tari - TAR-ee  
 Pavlech - PAV-lick  
 Sternecker - STIR-nuh-ker  
 Chalisa - shuh-LEE-suh  
 Fonza - FAWN-sa

**RETURNERS (4)**

F - NaLyssa Smith \*  
 C - Queen Egbo \*  
 G - Jaden Owens  
 G - Sarah Andrews  
 F - Caitlin Bickle  
 \* Returning starter

**NEWCOMERS (4)**

G - Jordan Lewis (Alabama)  
 G - Andrea Katramados  
 G - Ja'Mee Asberry (Oklahoma St.)  
 F - Kendra Gillispie

**STARTERS LOST (3)**

	PPG	RPG
G - Moon Ursin	12.6	6.6
G - Didi Richards	6.3	3.3
G - Trinity Oliver	4.4	3.1

**TV/RADIO HEAD SHOTS**



**1 - NALYSSA SMITH**

F · 6-4 · Sr.  
 Converse, Texas



**3 - JORDAN LEWIS**

G · 5-7 · G-Tr.  
 Windermere, Fla.



**4 - QUEEN EGBO**

C · 6-3 · Sr.  
 Houston, Texas



**10 - JADEN OWENS**

G · 5-8 · Jr.  
 Plano, Texas



**11 - ANDREA KATRAMADOS**

G · 5-10 · Fr.  
 Belle Mead, N.J.



**21 - JA'MEE ASBERRY**

G · 5-5 · Jr. -TR  
 Tulsa, Okla.



**25 - KENDRA GILLISPIE**

F · 6-2 · Fr.  
 Oklahoma City, Okla.



**24 - SARAH ANDREWS**

G · 5-6 · So.  
 Irving, Texas



**51 - CAITLIN BICKLE**

F · 6-0 · Sr.  
 Cave Creek, Ariz.



**NICKI COLLEN**

Head Coach  
 1st Season



**TARI CUMMINGS**

Assistant Coach  
 1st Season



**TONY GREENE**

Assistant Coach  
 1st Season



**CHLOE PAVLECH**

Assistant Coach  
 1st Season

## AWARDS / NATIONAL &amp; BIG 12 RANKINGS

## 2021-22 AWARDS

Player/Coach	Honor	Date
Nalyssa Smith	Preseason Big 12 Player of the Year	Oct. 6
Jordan Lewis	Preseason Big 12 Newcomer of the Year	Oct. 6
Nalyssa Smith	Preseason All-Big 12	Oct. 6
Queen Egbo	Preseason All-Big 12	Oct. 6
Jordan Lewis	Preseason All-Big 12 Honorable Mention	Oct. 6
Sarah Andrews	Preseason All-Big 12 Honorable Mention	Oct. 6
Nalyssa Smith	AP Preseason All-America	Oct. 26
Jordan Lewis	Lieberman Award Preseason Watch List	Oct. 27
Nalyssa Smith	McClain Award Preseason Watch List	Oct. 28
Queen Egbo	Leslie Award Preseason Watch List	Oct. 29
Nalyssa Smith	"Wade Watch" Preseason List	Nov. 9
Jordan Lewis	Wooden Award Top 50 Watch List	Nov. 9
Queen Egbo	Wooden Award Top 50 Watch List	Nov. 9
Nalyssa Smith	Wooden Award Top 50 Watch List	Nov. 9
Queen Egbo	Naismith Award Watch List	Nov. 9
Nalyssa Smith	Naismith Award Watch List	Nov. 9
Nalyssa Smith	Cancun Challenge Mayan MVP	Nov. 27
Nalyssa Smith	Cancun Challenge Mayan Team	Nov. 27
Jordan Lewis	Cancun Challenge Mayan Team	Nov. 27
Queen Egbo	Cancun Challenge Mayan Team	Nov. 27
Nalyssa Smith	Big 12 Player of the Week	Nov. 29
Jordan Lewis	Senior CLASS Award Candidate	Dec. 7
Nalyssa Smith	Senior CLASS Award Candidate	Dec. 7
Nalyssa Smith	Wooden Award Top 25 Watch List	Jan. 4
Nalyssa Smith	Naismith Women's Defensive POY Watch List	Jan. 25
Jordan Lewis	Big 12 Player of the Week	Jan. 31
Nalyssa Smith	Wooden Award Top 20 Watch List	Jan. 31
Jordan Lewis	Dawn Staley Award Late Season Watch List	Feb. 6
Jordan Lewis	Lieberman Award Top 10	Feb. 7
Nalyssa Smith	Naismith Award Midseason Watch List	Feb. 8

## NATIONAL/BIG 12 RANKINGS

## TEAM RANKINGS (NATIONAL TOP 10)

Cat.	Mark	NR	B12 R
------	------	----	-------

## PLAYER RANKINGS (TOP 25)

Cat.	Player	Mark	NR	B12R
Defensive Rebs/Gm	Nalyssa Smith	7.7	17	1
Double Doubles	Nalyssa Smith	15	5	1
Field Goals Made	Nalyssa Smith	179	5	2
Final Points	Nalyssa Smith	458	9	2
Points/Game	Nalyssa Smith	20.8	11	2
Rebounds	Nalyssa Smith	250	8	2
Rebounds/Game	Nalyssa Smith	11.4	14	1
3PT FGs Made	Ja'Mee Asberry	56	22	3
Triple Doubles	Jordan Lewis	1	5	1

## Div I Women, Longest Active Streaks of 20-Win Seasons

UConn	28	1993-94 - 2020-21
<b>Baylor</b>	<b>21</b>	<b>2000-01 - 2020-21</b>
Stanford	20	2001-02 - 2020-21
Maryland	17	2004-05 - 2020-21
Texas A&M	16	2005-06 - 2020-21
James Madison	15	2005-06 - 2019-20
		(13 wins in 2020-21)

## BAYLOR LINEUP INFO / ADDITIONAL OPPONENT INFO

## LINEUP INFO

## 2021-22 STARTING 5 COMBOS/RECORDS

Andrews, Lewis, Asberry, Smith, Egbo	17-5
--------------------------------------	------

## CAREER RECORD AS A STARTER

Player	W-L
Nalyssa Smith	17-10
Queen Egbo	51-9
Caitlin Bickle	1-0
Sarah Andrews	17-6
Ja'Mee Asberry	17-5
Jordan Lewis	17-5

## HEAD TO HEAD

## BAYLOR.....KANSAS STATE

75.9	Points Per Game	70.0
38.9	Rebounds Per Game	37.7
597-1323	Field Goals Made-Att.	591-1386
.421	Field Goal Percentage	.426
150-431	3-Point FG Made-Att.	136-452
.6.8	3-Point Percentage	.301
325-443	Free Throws Made-Att.	291-382
.734	Free Throw Percentage	.762
16.6	Assists Per Game	18.7
13.7	Turnovers Per Game	13.2
6.9	Steals Per Game	7.8
3.8	Blocks Per Game	5.7

## ASSOCIATED PRESS POLL

(Released Feb. 7, 2022)

Rank	Team	Record	Points	Previous Rank
1	South Carolina (30)	21-1	750	1
2	Stanford	18-3	719	2
3	Louisville	21-2	679	4
4	Michigan	20-2	656	6
5	NC State	20-3	639	3
6	Arizona	17-3	583	8
7	Indiana	16-3	566	5
8	UConn	15-4	534	10
9	Iowa State	20-3	465	11
10	Baylor	17-5	462	9
11	Georgia Tech	18-4	445	12
12	Oklahoma	20-3	404	18
13	Tennessee	19-4	398	7
14	LSU	18-4	342	15
15	Maryland	17-6	337	17
16	Texas	15-6	269	13
17	Georgia	17-5	255	14
18	Notre Dame	18-5	240	20
19	Florida	17-6	166	NR
20	BYU	19-2	161	16
21	Ohio State	16-4	147	23
22	FGCU	21-1	140	22
23	North Carolina	18-4	136	24
24	Oregon	14-7	99	19
25	Iowa	15-6	61	21

Others receiving votes: Kansas State 44, Ole Miss 24, Duke 14, Princeton 5, Dayton 3, Liberty 2, DePaul 2, Nebraska 1, Virginia 1, Drexel 1

## AP POLL STREAK

Baylor women's basketball has been included in the Associated Press Top 25 Poll for 347 consecutive weeks.

## USA TODAY/WBCA COACHES POLL

(Released Feb. 8, 2022)

Rank	Team	Record	Pts	1st	Prev
1	South Carolina	21-1	799	31	1
2	Stanford	18-3	763	1	2
3	Louisville	21-2	733	0	4
4	Michigan	20-2	693	0	5
5	NC State	21-3	675	0	3
6	Indiana	16-3	638	0	6
7	Arizona	17-3	600	0	8
8	UConn	15-4	574	0	9
9	Iowa State	20-3	538	0	10
10	Tennessee	19-4	447	0	7
11	Baylor	17-5	445	0	12
12	Maryland	17-6	416	0	14
13	LSU	19-4	395	0	15
14	Georgia	17-5	373	0	11
15	Oklahoma	20-3	349	0	18
16	Georgia Tech	18-5	318	0	17
17	Texas	15-6	284	0	13
18	BYU	19-2	235	0	16
19	Notre Dame	18-5	228	0	19
20	FGCU	21-1	209	0	20
21	Ohio State	17-4	200	0	21
22	North Carolina	18-4	148	0	23
23	Florida	17-6	80	0	NR
24	Iowa	15-6	74	0	24
25	Mississippi	18-5	41	0	25
25	Oregon	15-7	41	0	22

Others Receiving Votes: Kansas State 21, Liberty 20, Cenral Florida 19, South Florida 10, Rhode Island 7, Stony Brook 6, Virginia Tech 6, Drexel 4, Nebraska 4, Dayton 3, Duke 2, Gonzaga 1, Utah 1

**BAYLOR'S RECORD WHEN...**

	Big 12	All	Collen Era
Home	3-1	9-1	9-1
Away	4-2	5-3	5-3
Neutral	--	3-1	3-1
Leading at half	6-1	15-1	15-1
Trailing at half	1-1	2-3	2-3
Tied at half	0-1	0-1	0-1
Overtime	--	--	--
November games	--	7-1	7-1
December games	--	3-1	3-1
January games	5-2	5-2	5-2
February games	2-1	2-1	2-1
March games	--	--	--
April games	--	--	--
Television games	7-3	17-5	17-5
Versus ranked	3-2	3-4	3-4
Versus top 10	1-0	1-1	1-1

**Field Goals**

Shooting 20-29%	--	--	--
Shooting 30-39%	1-2	3-3	3-3
Shooting 40-49%	4-1	10-2	10-2
Shooting 50-59%	2-0	4-0	4-0
Shooting 60-69%	--	--	--
Higher than opponent	6-1	16-3	16-3
Lower than opponent	1-2	1-2	1-2

**Three-Point Field Goals**

Shooting 0-19%	1-0	2-0	2-0
Shooting 20-29%	1-1	4-3	4-3
Shooting 30-39%	1-2	3-2	3-2
Shooting 40-49%	2-0	6-0	6-0
Shooting 50-59%	2-0	2-0	2-0
Shooting 60-69%	--	--	--
Shooting 70-79%	--	--	--
Shooting 80-89%	--	--	--
Shooting 90-99%	--	--	--
Shooting 100%	--	--	--
Higher than opponent	2-1	9-1	9-1
Lower than opponent	5-2	8-4	8-4
Same as opponent	--	--	--

**Free Throws**

Shooting 30-39%	--	--	--
Shooting 40-49%	--	--	--
Shooting 50-59%	--	1-0	1-0
Shooting 60-69%	3-1	6-1	6-1
Shooting 70-79%	1-2	5-2	5-2
Shooting 80-89%	3-0	5-2	5-2
Shooting 90-100%	--	--	--
Higher than opponent	4-1	4-1	4-1
Lower than opponent	3-2	11-4	11-4
Same as opponent	--	--	--

Outrebounding opp.	5-1	14-2	14-2
Outrebounded by opp.	2-2	3-3	3-3
Rebounds equal	--	--	--

**Games decided by**

1-5 points	1-1	2-2	2-2
6-10 points	2-2	4-3	4-3
11-15 points	1-0	1-0	1-0
16-24 points	1-0	4-0	4-0
25+ points	2-0	6-0	6-0

**MILESTONES. TEAM NOTES. RANKINGS**

**INDIVIDUAL NOTES**

- **NaLyssa Smith** surpassed the 1,500 career-points mark against Michigan on Dec. 19. The senior currently has 1,734 career points (No. 10 in program history) to go with 945 rebounds. Only six Bears in Baylor women's basketball history have 1,500+ career points and 1,000+ career rebounds.
- **Jordan Lewis** is No. 15 in the country among active DI student-athletes with 1,832 career points. She's second with 625 career assists. Lewis also leads the nation with 152 career games played.

**TEAM NOTES**

- Baylor has out-rebounded its opponents in 176 of the last 187 games.
- Baylor is 252-1 all-time when shooting 50 percent or better from the field and 40-0 when shooting 60 percent or higher.
- 39 of Baylor's wins since 2010-11 have been by 10 or more points, and only 19 times in that span has its winning margin been five or fewer points.
- Baylor's last non-conference loss at home came Jan. 13, 2014 vs. UConn (66-55). Since then, the Bears have won 66-straight non-conference home games at the Ferrell Center including 15 NCAA Tournament contests.
- Since the 2010-11 season, Baylor is 44-5 vs. Top 25 opponents at the Ferrell Center.
- Baylor is 330-100 (.769) vs. Big 12 opponents in the regular season all-time.
- Baylor has been ranked in the Associated Press Top 25 for 347 straight weeks.
- Baylor has been ranked in the USA Today/WBCA Top 25 for 327 straight weeks.

**2021-22 GAME-BY-GAME SPECIALTY STATISTICS**

GAME (BU/OPP)	PAINT	OFF T/O	2ND CH.	FAST BR.	BENCH	GAME (BU/OPP)	PAINT	OFF T/O	2ND CH.	FAST BR.	BENCH
Texas State	42/30	22/14	9/12	13/15	13/28	Texas	28/18	25/17	5/12	24/10	8/25
at UT Arlington	36/30	22/9	17/12	9/2	10/16	at Texas	24/14	19/9	9/11	10/5	5/13
New Orleans	42/8	27/8	18/6	11/2	18/9						
at Maryland	34/34	13/17	7/17	13/8	4/5						
vs. Fordham	24/14	12/10	14/10	12/4	12/7						
vs. Arizona State	14/5	36/18	14/11	12/13	7/15						
vs. Houston	26/22	14/16	16/10	12/9	11/12						
Morehead State	24/10	15/7	11/4	10/3	15/7						
Missouri	28/30	10/11	10/9	13/3	15/14						
Alcorn State	34/12	25/7	16/6	28/0	18/18						
vs. Michigan	28/38	14/21	3/29	18/8	5/13						
North Texas	32/20	19/8	15/5	6/7	19/9						
at Kansas State	24/32	16/18	11/7	6/0	10/12						
at Oklahoma	40/26	9/25	17/4	6/15	11/33						
at Kansas	22/20	13/7	18/4	8/2	11/9						
Oklahoma State	32/14	15/9	15/4	10/8	8/21						
Iowa State	28/16	17/8	10/6	11/5	11/12						
at Texas Tech	40/22	20/23	20/10	3/8	12/11						
at West Virginia	36/28	13/9	9/2	4/20	13/29						
Oklahoma	32/38	16/13	9/16	17/19	13/21						

**2021-22 BAYLOR WEEKLY NATIONAL RANKINGS**

**ASSOCIATED PRESS**

Week	Date	Rank
Pre	10/27	7
1	11/15	6
2	11/22	6
3	11/29	5
4	12/6	5
5	12/13	5
6	12/20	10
7	12/27	10
8	1/3	14
9	1/10	14
10	1/17	15
11	1/24	11
12	1/31	9
13	2/7	10

**USA TODAY/COACHES**

Week	Date	Rank
Pre	11/3	8
2	11/22	8
3	11/30	7
4	12/7	6
5	12/14	5
6	12/21	10
7	12/28	10
8	1/4	13
9	1/11	13
10	1/18	16
11	1/25	14
12	2/1	12
13	2/8	10

## THE LAST TIME A BAYLOR TEAM ...

Scored 120 Points.....	136, vs. Northwestern State (Dec. 18, 2020)
Scored Fewer than 50 Points.....	45 at Oklahoma State (Dec. 30, 2015)
Won by 100 Points.....	140-32 vs. Winthrop (Dec. 15, 2016)^
Won by 70 Points.....	93 vs. McNeese State (Dec. 19, 2020)
Shot 65 pct from the floor.....	67.9 (57-84) vs. Northwestern State (Dec. 18, 2020)
Shot 60 pct from the floor.....	62.3 (48-77) vs. McNeese State (Dec. 19, 2020)
Shot less than 35 pct from the floor.....	34.8% (24-69) vs. No. 5/6 South Carolina (Nov. 30, 2019)
Shot 70 pct from 3-point range.....	71.4% (5-7) vs. Houston Baptist (Nov. 14, 2019)
Shot less than 20 pct from 3-point range.....	18.3 (2-11) vs. Oklahoma State (Jan. 19, 2022)
Made 10 3-point field goals.....	12 vs. Iowa State (1/23/22)
Shot 100 percent from the FT line.....	14-14, vs. TCU (March 12, 2021)
Shot less than 50 pct from the FT line.....	45.5% (5-11) vs. Iowa State (Jan. 16, 2021)
Had 70 Rebounds.....	75 vs. UTRGV (Dec. 31, 2018)*
Had 60 Rebounds.....	61 vs. Oklahoma State (Jan. 12, 2020)
Had 30 Offensive Rebounds.....	31 vs. UTRGV (Dec. 31, 2018)
Had 40 Assists.....	45 vs. Northwestern State (Dec. 18, 2020)*
Had 30 Assists.....	33 vs. McNeese State (Dec. 19, 2020)
Had 25 Turnovers.....	25 vs. Syracuse (Dec. 19, 2014)
Had less than 5 Turnovers.....	2 vs. Texas (Feb. 1, 2014)*
Had 20 Steals.....	25 vs. McNeese State (Dec. 19, 2020)
Had 17 Blocked Shots.....	17 vs. Winthrop (Dec. 15, 2016)*
Had 15 Blocked Shots.....	15 vs. Kansas (Jan. 1, 2017)
Had two 30-point scorers.....	Nina Davis (32), Odyssey Sims (31) vs. Western Kentucky (March 22, 2014)
Had three 20-point scorers.....	NaLyssa Smith (30), Queen Egbo (21), Hannah Gusters (22) vs. Northwestern State (Dec. 18, 2020)
Had eight double-figure scorers.....	NaLyssa Smith (21), DiDi Richards (15), Juicy Landrum (14), Queen Egbo (14), Erin DeGrate (13), Lauren Cox (13), Te'a Cooper (12), Moon Ursin (10) * vs. Grambling State (Nov. 8, 2019)
Had seven double-figure scorers.....	NaLyssa Smith (21), DiDi Richards (15), Juicy Landrum (14), Queen Egbo (14), Erin DeGrate (13), Lauren Cox (13), Te'a Cooper (12), Moon Ursin (10) vs. Grambling State (Nov. 8, 2019)
Had no players score in double figures.....	at Texas Tech (Feb. 29, 2000)
Had three double-figure rebounders.....	Kalani Brown (13), NaLyssa Smith (11), Queen Egbo (10) vs. Oklahoma State (Mar. 2, 2019)
Had three with double-doubles.....	Nina Davis (18p/14r), Kalani Brown (14p/10r), Kristy Wallace (12p/10r) vs. Texas Tech (March 4, 2017)
Had two with double figure assists.....	Niya Johnson (14a), Odyssey Sims (13a) vs. San Jose State (Dec. 3, 2013)
Scored 70 points or more in the first half.....	74 vs. Northwestern State (Dec. 18, 2020)
Scored 60 points or more in first half.....	63 vs. Oklahoma (Feb. 22, 2020)
Scored 60 pts or more in second half.....	65 vs. McNeese State (Dec. 19, 2020)
Scored 20 points or less in first half.....	20 vs. Fordham (Nov. 25, 2021)
Scored 20 points or less in second half.....	19 vs. Kansas State (Jan. 22, 2014)
Failed to make a 3-point field goal.....	.000 (0-11) at South Florida (Dec. 1, 2020)
Defeated a top 10 team.....	87-61 vs. No. 7 Iowa State (1/23/22)
Lost to a ranked team.....	78-77 vs. No. 18 Oklahoma (Feb. 2, 2022)
Lost to an unranked team.....	68-59 at Kansas State (Jan. 2, 2022)
Lost to an unranked team at home.....	75-71 vs. Iowa State (Jan. 16, 2021)
Lost a regular season, non-conference game.....	74-68 (OT) vs. 11/13 Michigan (Dec. 19, 2021)
Lost a regular season, non-conference home game.....	66-55 vs. UConn (Jan. 13, 2014)
Won an overtime game.....	78-75 vs. Michigan (March 27, 2021)
Lost an overtime game.....	74-68 (OT) vs. 11/13 Michigan (Dec. 19, 2021)
Won a double-overtime game.....	95-83 vs. Iowa State (Feb. 1, 2003)
Lost a double-overtime game.....	never
Won a triple-overtime game.....	never
Lost a triple-overtime game.....	103-99 at Nebraska (Jan. 12, 2005)
Won a quadruple-overtime game.....	never
Lost a quadruple-overtime game.....	133-130 4OT vs. #5 Kentucky (Dec. 6, 2013)

## THE LAST TIME A BAYLOR INDIVIDUAL...

Recorded a Triple-Double (Pts/Reb/Ast).....	Jordan Lewis (10p/10r/11a) at West Virginia (Jan. 29, 2022)
Recorded a Triple-Double (Pts/Reb/Blk).....	Brittney Griner (28p/10r/10bl) at West Virginia (March 2, 2013)
Recorded a Double-Double (Pts/Ast).....	Jordyn Oliver (12p/10a) vs. Northwestern State (Dec. 18, 2020)
Recorded a Double-Double (Reb/Ast).....	Niya Johnson (10r/19a) vs. McNeese State (Dec. 13, 2015)
Recorded a Double-Double (Pts/Blk).....	Brittney Griner (28p/10bl) at West Virginia (March 2, 2013)
Had a 20/10 Performance (Pts/Ast).....	Te'a Cooper (23p/10a) vs. Houston Baptist (Nov. 14, 2019)
Had a 30/10 Performance (Pts/Reb).....	NaLyssa Smith (30p/15r) at Maryland (Nov. 21, 2021)
Had a 20/20 Performance (Pts/Reb).....	Kalani Brown (20p/23r) at #21/22 Oklahoma State (Feb. 13, 2018)
Had a 30/20 Performance (Pts/Reb).....	Brittney Griner (33p/22r) vs. #23 Florida State (March 26, 2013)
Had a 40/20 Performance (Pts/Reb).....	Danielle Crockmro (41p/22r) at Texas A&M (Jan. 20, 2001)
Scored 50 Points.....	Brittney Griner (50) vs. Kansas State (March 4, 2013)
Scored 40 Points.....	Juicy Landrum (42) vs. Arkansas State (Dec. 18, 2019)
Scored 30 Points.....	NaLyssa Smith (30) at Oklahoma (Jan. 12, 2022)
Had 20 Rebounds.....	Queen Egbo vs. No. 7 Iowa State (1/23/22)
Had 10 Assists.....	Jordan Lewis (11) at West Virginia (Jan. 29, 2022)
Had 5 Steals.....	Jordan Lewis (5) vs. Texas (Feb. 4, 2022)
Had 5 Blocked Shots.....	Queen Egbo (7) vs. Virginia Tech (March 23, 2021)
Had 10 Blocked Shots.....	Brittney Griner (10) at West Virginia (March 2, 2013)

## THE LAST TIME A BAYLOR OPPONENT...

Scored 100 Points.....	133 by #5 Kentucky (Dec. 6, 2013)
Scored 90 Points.....	133 by #5 Kentucky (Dec. 6, 2013)
Scored Fewer than 30 Points.....	28 by Morehead State (Nov. 30, 2021)
Won by 30 Points.....	31 by LSU (Jan. 30, 2006)
Shot 65 pct from the floor.....	66.7 (40-67) by Iowa State (Feb. 26, 2000)
Shot 60 pct from the floor.....	61.0 (36-59) by Oklahoma (Jan. 15, 2000)
Shot 50 pct from the floor.....	52.8% by Texas Tech (Jan. 26, 2022)
Shot less than 25 pct from the floor.....	20.0% by Morehead State (Nov. 30, 2021)
Shot 50 pct from 3-point range.....	62.5% (5-8) by Texas (Feb. 4, 2022)
Shot less than 20 pct from 3-point range.....	14.3 % by Morehead State (Nov. 30, 2021)
Made 10 3-point field goals.....	(11-15) by Texas Tech (Jan. 26, 2022)
Shot less than 50 pct from the FT line.....	44.4% (8-18) by Jackson State (March 21, 2021)
Had 50 Rebounds.....	50 by Michigan (Dec. 19, 2021)
Had 20 Offensive Rebounds.....	26 by #18/19 Texas (Feb. 25, 2019)
Had 20 Assists.....	21 at #8/7 UCLA (Nov. 18, 2017)
Had 20 Turnovers.....	20 by Texas (Feb. 4, 2022)
Had 7 or Fewer Turnovers.....	7 by Texas (Jan. 31, 2020)
Had 10 Steals.....	11 by Oklahoma (Feb. 2, 2022)
Had 10 Blocked Shots.....	10 by Oklahoma (Feb. 21, 2009)
Had two 20-point scorers.....	Bryn Gerlich (22) and Vivian Gray (21) at Texas Tech (Jan. 26, 2022)
Had two double-figure rebounders.....	Mercedes Russell (12), Jaime Nared (11) by #22/25 Tennessee (Dec. 4, 2016)
Had no players in double figures.....	Alcorn State (Dec. 8, 2021)
Scored 50 points or more in first half.....	50 by Texas Tech (Feb. 29, 2000)
Scored 50 points or more in the second half.....	52 by #6/6 Texas (Feb. 19, 2018)
Scored 20 points or less in first half.....	18 by Alcorn State (Dec. 8, 2021)
Scored 20 points or less in second half.....	11 by Morehead State (Nov. 30, 2021)
Failed to make a 3-point field goal.....	(0-13) by Texas Tech (Feb. 10, 2021)

## THE LAST TIME AN OPPONENT INDIVIDUAL...

Had a 30/10 Performance (Pts/Reb).....	Ayoka Lee (32 pts, 10 reb), at Kansas State (Jan. 2, 2022)
Had a 20/10 Performance (Pts/Reb).....	Aijha Blackwell (20 pts, 16 reb), Missouri (Dec. 4, 2021)
Scored 30 Points.....	32 by Ayoka Lee, Kansas State (Jan. 2, 2022)
Scored 40 Points.....	41 by Morgan William, #7/7 Mississippi State (March 26, 2017)
Had 20 Rebounds.....	26 by Courtney Paris, Oklahoma (March 11, 2009)
Had 15 Rebounds.....	16 by Aijha Blackwell, Missouri (Dec. 4, 2021)
Had 10 Assists.....	13 by Jordin Canada, No. 8/7 UCLA (Nov. 18, 2017)
Had 5 Steals.....	5 by Lauren Fields, Oklahoma State (Feb. 24, 2021)
Had 5 Blocked Shots.....	5 by Kristin Scott, Iowa State (Jan. 31, 2021)

\* School record

^ NCAA record

+ Opponent record





# NALYSSA SMITH

**MAJOR**  
Communication Studies

## CAREER HIGHS

<b>Points</b>	
30 vs. Northwestern St. [12/18/20]	
vs. Oklahoma State [1/12/20]	
at Maryland (11/21/22)	
at Oklahoma (1/12/22)	
<b>Rebounds</b>	
19 vs. Houston (11/27/21)	
<b>Assists</b>	
4, vs. Oklahoma, [1/23/21]	
<b>Blocks</b>	
4, vs. Central Arkansas [11/25/20]	
<b>Steals</b>	
3, vs. Southern [12/16/20];	
vs. Lamar [11/21/19]	
at Oklahoma (1/12/22)	
<b>Field Goals</b>	
12 at Oklahoma State [1/12/20]	
at Oklahoma (1/12/22)	
<b>Field Goal Attempts</b>	
22 at Kansas (1/16/22)	
at Texas Tech [2/10/21];	
vs. South Carolina [1/30/19]	
<b>3-Point Field Goals</b>	
2 at Texas [3/1/21]	
<b>3-Point Field Goal Attempts</b>	
3, vs. Central Arkansas [11/25/20]	
<b>Free Throws</b>	
13 vs. Central Arkansas [11/25/20]	
<b>Free Throw Attempts</b>	
15 vs. Central Arkansas [11/25/20]	
<b>Minutes Played</b>	
45, vs. Michigan [3/27/21]	

## MISCELLANEOUS

Double-Figure Scoring	87
Double-Figure Rebounds	43
Double-Doubles	43
Led Team in Scoring	36
Led Team in Rebounds	35
Led Team in Blocks	11
Led Team in Steals	7
20+ Point Games	31
30+ Point Games	3

## #1 • F • 6-4 • SR. • 3L • CONVERSE, TEXAS (EAST CENTRAL HS)

### 2021-22 AWARDS

- SENIOR CLASS AWARD NOMINEE (12/7)
- BIG 12 PLAYER OF THE WEEK (11/29)
- CUNCUN CHALLENGE MAYAN DIVISION MVP / ALL-TOURNAMENT TEAM
- PRESEASON BIG 12 PLAYER OF THE YEAR
- ASSOCIATED PRESS PRESEASON ALL-AMERICAN
- KATRINA MCCLAIN AWARD WATCH LIST
- "WADE WATCH" PRESEASON LIST
- WOODEN AWARD TOP 50 WATCH LIST
- NAISMITH PRESEASON WATCH LIST
- WOODEN AWARD TOP 25 WATCH LIST
- NAISMITH DEFENSIVE PLAYER OF THE YEAR WATCH LIST
- WOODEN AWARD LATE SEASON TOP 20 WATCH LIST
- NAISMITH MIDSEASON WATCH LIST

### 2021-22 NOTABLES

- Became the first player in the Big 12 this season with a 20+ point, 10+ rebound game with 21 points and 16 rebounds at UT Arlington (11/11)
- Logged her 100th career game in a Baylor uniform against New Orleans
- Put up a 30-piece at No. 3 Maryland, matching her career high, as she took over in the second half to get the Bears back in the ball game. Smith also pulled down 15 boards against the Terrapins to give her a 30/15 game.
- Nearly had a 20-20 performance against Houston with 21 points and a career-high 19 rebounds. Finished with 18 and 10 in the second half alone (14 minutes).
- Third in the country in double-doubles.
- Scored 30 points at Oklahoma (1/12)
- Combined for 53 points on 21-30 shooting to go with 21 rebounds in the weekend series vs. No. 13 Texas

## 2021-22 GAME-BY-GAME STATISTICS

Opponent	Date	GS	MIN	Total		3-Pointers		Free throws		Rebounds				PF	A	TO	BLK	STL	PTS	AVG
				FG-FGA	PCT	3FG-3FGA	PCT	FT-FTA	PCT	OFF	DEF	TOT	AVG							
Texas St.	11/09/2021	*	34:20	8-17	.471	0-2	.000	7-9	.778	3	4	7	7.0	3	0	5	2	1	23	23.0
at UT Arlington	11/11/2021	*	29:00	8-9	.889	0-0	.000	5-5	1.000	5	11	16	11.5	3	1	5	2	2	21	22.0
New Orleans	11/15/2021	*	28:58	3-5	.600	0-0	.000	7-7	1.000	3	7	10	11.0	2	1	3	1	0	13	19.0
at Maryland	11/21/2021	*	37:29	14-25	.560	1-3	.333	1-1	1.000	5	10	15	12.0	3	1	2	0	0	30	21.8
vs Fordham	11/25/2021	*	32:44	8-16	.500	0-1	.000	3-5	.600	5	10	15	12.6	3	1	6	0	1	19	21.2
vs Arizona St.	11/26/2021	*	27:07	7-14	.500	0-0	.000	3-4	.750	3	9	12	12.5	4	0	2	2	1	17	20.5
vs Houston	11/27/2021	*	27:36	6-14	.429	1-1	1.000	8-13	.615	6	13	19	13.4	1	1	0	2	0	21	20.6
Morehead St.	11/30/2021	*	26:38	3-7	.429	0-1	.000	4-4	1.000	2	9	11	13.1	2	0	4	1	1	10	19.3
Missouri	12/04/2021	*	38:15	9-13	.692	0-0	.000	7-10	.700	4	13	17	13.6	2	3	2	0	1	25	19.9
Alcorn	12/08/2021	*	20:01	10-13	.769	1-2	.500	4-6	.667	2	8	10	13.2	0	3	0	1	1	25	20.4
vs Michigan	12/19/2021	*	42:00	8-15	.533	1-2	.500	4-6	.667	2	12	14	13.3	2	0	4	3	1	21	20.5
North Texas	12/29/2021	*	26:38	14-21	.667	0-2	.000	0-0	.000	4	7	11	13.1	2	3	0	0	1	28	21.1
at Kansas St.	01/02/2022	*	40:00	4-12	.333	0-0	.000	4-6	.667	4	3	7	12.6	4	3	1	2	2	12	20.4
at Oklahoma	01/12/2022	*	37:49	12-20	.600	0-1	.000	6-8	.750	3	5	8	12.3	3	2	3	0	3	30	21.1
at Kansas	01/16/2022	*	31:58	6-22	.273	0-1	.000	3-6	.500	6	4	10	12.1	3	2	3	0	0	15	20.7
Oklahoma St.	01/19/2022	*	35:14	6-15	.400	0-1	.000	4-6	.667	4	9	13	12.2	4	1	4	0	1	16	20.4
Iowa St.	01/23/2022	*	31:23	7-15	.467	0-1	.000	3-3	1.000	1	5	6	11.8	3	1	1	3	0	17	20.2
at Texas Tech	01/26/2022	*	38:48	10-21	.476	0-1	.000	3-4	.750	4	5	9	11.7	1	0	0	0	0	23	20.3
at West Virginia	01/29/2022	*	22:25	9-11	.818	1-1	1.000	1-1	1.000	2	5	7	11.4	4	2	2	0	0	20	20.3
Oklahoma	02/02/2022	*	37:47	6-15	.400	0-1	.000	7-9	.778	8	4	12	11.5	2	2	5	3	0	19	20.3
Texas	02/04/2022	*	36:45	10-12	.833	1-1	1.000	4-4	1.000	2	6	8	11.3	3	0	5	1	0	25	20.5
at Texas	02/06/2022	*	34:44	11-18	.611	0-1	.000	6-6	1.000	3	10	13	11.4	4	0	2	0	0	28	20.8
Totals		22	717:38	179-330	.542	6-23	.261	94-123	.764	81	169	250	11.4	58	27	59	23	16	458	20.8

## SMITH'S CAREER STATISTICS

SEASON	TEAM	GP-GS	MIN/AVG	Field Goals		3-Point		F-Throws		Rebounds				Scoring						
				FG-FGA	FG%	3FG-3FGA	3FG%	FT-FTA	FT%	OFF	DEF	TOT	AVG	PF-FO	A	TO	BLK	STL	PTS	AVG
2018-19	Baylor	38-1	582/15.3	134-247	.543	1-9	.111	49-72	.681	73	120	193	5.1	69-1	15	34	15	15	318	8.4
2019-20	Baylor	28-27	677/24.2	154-263	.586	0-4	.000	91-122	.746	79	146	225	8.0	63-1	17	45	16	25	399	14.3
2020-21	Baylor	31-31	944/30.4	217-387	.561	3-14	.214	122-154	.792	100	177	277	8.9	71-0	36	86	26	38	559	18.0
2021-22	Baylor	22-22	718/32.6	179-330	.542	6-23	.261	94-123	.764	81	169	250	11.4	58-0	27	59	23	16	458	20.8
<b>TOTAL</b>		<b>119-81</b>	<b>2920/24.5</b>	<b>684-1227</b>	<b>.557</b>	<b>10-50</b>	<b>.200</b>	<b>356-471</b>	<b>.756</b>	<b>333</b>	<b>612</b>	<b>945</b>	<b>7.9</b>	<b>261-2</b>	<b>95</b>	<b>224</b>	<b>80</b>	<b>94</b>	<b>1734</b>	<b>14.6</b>





## JORDAN LEWIS

### MAJOR

Undecided

### CAREER HIGHS

<b>Points</b>	
32, vs. North Carolina (3/22/21) *	
<b>Rebounds</b>	
11, three times, last at OU (1/12)	
<b>Assists</b>	
11, at West Virginia (1/29/22)	
<b>Blocks</b>	
2, at SMU (11/15/18) *	
at West Virginia (1/29/22)	
<b>Steals</b>	
6, at Georgia Southern (11/19/17) *	
<b>Field Goals</b>	
11, at North Carolina (3/22/21) *	
<b>Field Goal Attempts</b>	
21, 3X last vs. UNC (3/22/21) *	
<b>3-Point Field Goals</b>	
6, at Tulane (11/24/19) *	
vs. Iowa State (1/23/22)	
<b>3-Point Field Goal Attempts</b>	
10, Texas A&M (2/25/21) *	
<b>Free Throws</b>	
13, Ole Miss (2/11/21) *	
<b>Free Throw Attempts</b>	
14, twice last Ole Miss (2/11/21) *	
<b>Minutes Played</b>	
45, vs. Michigan (12/19/21)	

### MISCELLANEOUS

Double-Figure Scoring	91
Double-Figure Rebounds	5
Double-Doubles	4
Triple Doubles	1
20+ Point Games	20
30+ Point Games	1
* Accomplished at Alabama	

## #3 • G • 5-7 • GS. • TR • WINDERMERE, FLA. (LAKE HIGHLAND PREP / ALABAMA)

### 2021-22 AWARDS

- SENIOR CLASS AWARD NOMINEE (12/7)
- CUNCUN CHALLENGE MAYAN DIVISION ALL-TOURNAMENT TEAM
- PRESEASON BIG 12 NEWCOMER OF THE YEAR
- NANCY LIEBERMAN PRESEASON WATCH LIST
- WOODEN AWARD TOP 50 WATCH LIST
- BIG 12 PLAYER OF THE WEEK (1/31)
- DAWN STALEY AWARD LATE SEASON WATCH LIST
- NANCY LIEBERMAN TOP 10

career assists

- Logged a career-high 45 minutes vs. Michigan (12/19)
- Tied her career high with 11 rebounds at Oklahoma (1/12)
- Dished out a season-high eight assists at Kansas (1/16)
- Went off for 24 points in the win over No. 7 Iowa State with a 6-for-7 showing from the 3-point line
- Is No. 15 nationally with a 2.50 assist to turnover ratio this season
- Hit the 600 career assist mark against Iowa State
- Recorded first-career triple double with 10 points, 10 rebounds and 11 assists at West Virginia

### 2021-22 NOTABLES

- Made her Baylor debut vs. Texas State (11/9)
- Went to work against No. 3 Maryland as she finished with a season-high 29 points, including a 3-pointer that cut the Terrapin lead to three with a minute to play.
- Among active Division I WBB players, ranks No. 14 in career points and No. 3 in

## 2021-22 GAME-BY-GAME STATISTICS

Opponent	Date	GS	MIN	Total		3-Pointers		Free throws		Rebounds											
				FG-FGA	PCT	3FG-3FGA	PCT	FT-FTA	PCT	OFF	DEF	TOT	AVG	PF	A	TO	BLK	STL	PTS	AVG	
Texas St.	11/09/2021	*	32:12	4-9	.444	1-4	.250	5-9	.556	0	3	3	3.0	4	7	1	0	1	14	14.0	
at UT Arlington	11/11/2021	*	31:02	4-9	.444	3-7	.429	1-2	.500	0	2	2	2.5	2	4	1	0	0	12	13.0	
New Orleans	11/15/2021	*	28:27	3-7	.429	2-5	.400	0-2	.000	0	2	2	2.3	1	4	3	0	1	8	11.3	
at Maryland	11/21/2021	*	35:18	12-18	.667	3-7	.429	2-2	1.000	1	4	5	3.0	3	2	4	0	0	29	15.8	
vs Fordham	11/25/2021	*	32:32	6-9	.667	1-3	.333	2-4	.500	1	2	3	3.0	2	6	1	0	2	15	15.6	
vs Arizona St.	11/26/2021	*	33:06	3-8	.375	0-2	.000	9-12	.750	2	2	4	3.2	2	5	3	0	0	15	15.5	
vs Houston	11/27/2021	*	27:51	2-6	.333	1-3	.333	2-2	1.000	0	2	2	3.0	1	4	1	0	3	7	14.3	
Morehead St.	11/30/2021	*	20:47	1-4	.250	1-4	.250	0-2	.000	0	1	1	2.8	1	4	3	0	0	3	12.9	
Missouri	12/04/2021	*	38:15	2-10	.200	0-3	.000	5-8	.625	1	1	2	2.7	2	7	0	1	1	9	12.4	
Alcorn	12/08/2021	*	19:01	3-6	.500	2-5	.400	0-0	.000	0	2	2	2.6	1	3	1	0	0	8	12.0	
vs Michigan	12/19/2021	*	44:60	2-13	.154	0-5	.000	11-11	1.000	3	2	5	2.8	3	7	3	0	4	15	12.3	
North Texas	12/29/2021	*	32:42	5-9	.556	2-5	.400	1-2	.500	0	1	1	2.7	4	7	1	0	1	13	12.3	
at Kansas St.	01/02/2022	*	36:21	4-10	.400	1-6	.167	5-8	.625	1	4	5	2.8	4	4	4	0	5	14	12.5	
at Oklahoma	01/12/2022	*	37:29	2-6	.333	2-5	.400	1-2	.500	1	10	11	3.4	4	5	5	0	0	7	12.1	
at Kansas	01/16/2022	*	31:34	0-7	.000	0-4	.000	1-2	.500	0	1	1	3.3	3	8	2	0	2	1	11.3	
Oklahoma St.	01/19/2022	*	32:38	5-8	.625	1-1	1.000	2-3	.667	1	3	4	3.3	4	7	2	0	1	13	11.4	
Iowa St.	01/23/2022	*	28:33	9-11	.818	6-7	.857	0-4	.000	0	1	1	3.2	2	6	1	0	1	24	12.2	
at Texas Tech	01/26/2022	*	29:27	5-9	.556	1-4	.250	5-6	.833	1	1	2	3.1	4	2	3	0	1	16	12.4	
at West Virginia	01/29/2022	*	30:57	3-7	.429	2-2	1.000	2-4	.500	1	9	10	3.5	3	11	3	2	0	10	12.3	
Oklahoma	02/02/2022	*	25:15	1-4	.250	0-1	.000	3-3	1.000	1	4	5	3.6	4	3	2	0	0	5	11.9	
Texas	02/04/2022	*	31:59	0-6	.000	0-4	.000	4-6	.667	0	2	2	3.5	3	6	4	0	5	4	11.5	
at Texas	02/06/2022	*	35:06	2-7	.286	0-1	.000	5-7	.714	1	1	2	3.4	2	3	5	0	0	9	11.4	
Totals		22	695:33	78-183	.426	29-88	.330	66-101	.653	15	60	75	3.4	59	115	53	3	28	251	11.4	

## LEWIS'S CAREER STATISTICS

				Field Goals		3-Point		F-Throws		Rebounds									Scoring	
SEASON	TEAM	GP-GS	MIN/AVG	FG-FGA	FG%	3FG-3FGA	3FG%	FT-FTA	FT%	OFF	DEF	TOT	AVG	PF-FO	A	TO	BLK	STL	PTS	AVG
2016-17	Bama	36-36	1175/32.6	106-324	.327	37-131	.282	102-153	.667	37	104	141	3.9	73-3	154	117	1	52	351	9.8
2017-18	Bama	31-31	1029/33.2	87-274	.318	29-88	.330	99-135	.733	18	102	120	3.9	53-0	108	71	1	35	302	9.7
2018-19	Bama	8-8	243/30.4	32-76	.421	10-33	.303	34-47	.723	5	27	32	4.0	19-0	25	20	0	10	108	13.5
2019-20	Bama	30-30	1006/33.5	120-308	.390	44-127	.346	110-152	.724	33	103	136	4.5	53-0	117	80	2	35	394	13.1
2020-21	Bama	25-25	894/35.7	126-309	.408	47-126	.373	127-162	.784	27	79	106	4.2	49-0	106	70	4	27	426	17.0
2021-22	Baylor	22-22	696/31.6	78-183	.426	29-88	.330	66-101	.653	15	60	75	3.4	59-0	115	53	3	28	251	11.4
TOTAL FOR Baylor		22-22	696/31.6	78-183	.426	29-88	.330	66-101	.653	15	60	75	3.4	59-0	115	53	3	28	251	11.4
TOTAL		152-152	5042/33.2	549-1474	.372	196-593	.331	538-750	.717	135	475	610	4.0	306-3	625	411	11	187	1832	12.1



## QUEEN EGBO

### MAJOR

Health, Kinesiology & Leisure Studies

### CAREER HIGHS

<b>Points</b>	
26 vs. West Virginia [3/8/21]	
<b>Rebounds</b>	
21, vs. Iowa State [1/23/22]	
<b>Assists</b>	
4, K-State [2/27/21]	
vs. Morehead State [11/30/21]	
<b>Blocks</b>	
6, vs. TCU [3/12/21]	
<b>Steals</b>	
4, vs. McNeese State [12/19/20]	
<b>Field Goals</b>	
11, vs. New Orleans [11/15/21]	
<b>Field Goal Attempts</b>	
19, at South Florida [12/1/20]	
<b>3-Point Field Goals</b>	
n/a	
<b>3-Point Field Goal Attempts</b>	
2 vs. Arkansas St. [12/18/19]	
<b>Free Throws</b>	
9, vs. Oklahoma State [1/19/22]	
<b>Free Throw Attempts</b>	
12 vs. UTRGV [12/31/18]	
<b>Minutes Played</b>	
38 at Texas [3/1/21]	

### MISCELLANEOUS

Double-Figure Scoring	55
Double-Figure Rebounding	31
Double-Doubles	26
Led Team in Blocks	29
Led Team in Rebounds	24
Led Team in Steals	13
Led Team in Scoring	10
20-Point Games	7

## #4 • C • 6-3 • SR • 4L • HOUSTON, TEXAS (TRAVIS HS)

### 2021-22 AWARDS

- CUNCUN CHALLENGE MAYAN DIVISION ALL-TOURNAMENT TEAM
- PRESEASON ALL-BIG 12 TEAM
- LESLIE AWARD PRESEASON WATCH LIST
- WOODEN AWARD TOP 50 WATCH LIST
- NAISMITH PRESEASON WATCH LIST

### 2021-22 NOTABLES

- Recorded a double-double to open the season with 16 points and 11 rebounds against Texas State (11/9)
- Logged her fourth career 20+ point, 10+ rebound game with 22 points and 11 boards vs. New Orleans (11/15)
- Could not be stopped against Houston as she finished with 16 points off 50 percent shooting from the floor to go with eight boards and three blocks.

- Pulled down a career-high 16 rebounds vs. Morehead State and tied her career high with four assists
- Posted a double-double with 16 points and 10 rebounds at Oklahoma (1/12)
- Topped 1,000 points for her career against Oklahoma State (1/23)
- Pulled down 21 rebounds vs. Iowa State (1/23) which tied for eighth in a single game in program history
- Had a monster game at West Virginia with 20 points on 10-of-11 shooting from the floor to go with three blocks and three steals

## 2021-22 GAME-BY-GAME STATISTICS

Opponent	Date	GS	MIN	Total		3-Pointers		Free throws		Rebounds				PF	A	TO	BLK	STL	PTS	AVG
				FG-FGA	PCT	3FG-3FGA	PCT	FT-FTA	PCT	OFF	DEF	TOT	AVG							
Texas St.	11/09/2021	*	27:57	6-8	.750	0-0	.000	4-4	1.000	6	5	11	11.0	2	0	4	2	1	16	16.0
at UT Arlington	11/11/2021	*	19:03	3-5	.600	0-0	.000	0-0	.000	1	3	4	7.5	2	1	2	2	1	6	11.0
New Orleans	11/15/2021	*	28:14	11-12	.917	0-0	.000	0-1	.000	8	3	11	8.7	2	0	3	3	1	22	14.7
at Maryland	11/21/2021	*	17:32	1-4	.250	0-1	.000	1-2	.500	1	2	3	7.3	2	2	0	1	0	3	11.8
vs Fordham	11/25/2021	*	24:06	0-9	.000	0-0	.000	2-2	1.000	1	7	8	7.4	1	1	2	0	1	2	9.8
vs Arizona St.	11/26/2021	*	27:57	4-14	.286	0-0	.000	3-4	.750	2	3	5	7.0	1	1	1	3	1	11	10.0
vs Houston	11/27/2021	*	24:39	6-12	.500	0-0	.000	4-6	.667	2	6	8	7.1	4	1	2	3	0	16	10.9
Morehead St.	11/30/2021	*	29:17	5-7	.714	0-0	.000	1-2	.500	3	13	16	8.3	1	4	0	1	1	11	10.9
Missouri	12/04/2021	*	16:57	1-7	.143	0-0	.000	0-0	.000	0	6	6	8.0	3	0	3	1	0	2	9.9
Alcorn	12/08/2021	*	14:00	4-6	.667	0-0	.000	1-1	1.000	5	2	7	7.9	1	3	1	3	2	9	9.8
vs Michigan	12/19/2021	*	20:33	2-4	.500	0-0	.000	0-0	.000	1	3	4	7.5	2	0	2	2	0	4	9.3
North Texas	12/29/2021	*	24:17	4-8	.500	0-0	.000	4-6	.667	3	8	11	7.8	2	0	2	0	3	12	9.5
at Kansas St.	01/02/2022	*	17:29	2-4	.500	0-0	.000	0-0	.000	2	2	4	7.5	5	0	3	0	0	4	9.1
at Oklahoma	01/12/2022	*	22:46	6-12	.500	0-0	.000	4-5	.800	4	6	10	7.7	2	0	2	2	1	16	9.6
at Kansas	01/16/2022	*	23:18	4-9	.444	0-0	.000	2-3	.667	1	9	10	7.9	1	0	3	2	0	10	9.6
Oklahoma St.	01/19/2022	*	28:44	5-9	.556	0-0	.000	9-9	1.000	2	6	8	7.9	1	2	1	2	1	19	10.2
Iowa St.	01/23/2022	*	29:24	4-13	.308	0-0	.000	6-7	.857	9	12	21	8.6	3	3	3	3	3	14	10.4
at Texas Tech	01/26/2022	*	19:00	3-7	.429	0-0	.000	3-4	.750	2	1	3	8.3	4	0	2	1	0	9	10.3
at West Virginia	01/29/2022	*	26:16	10-11	.909	0-0	.000	0-0	.000	0	8	8	8.3	2	0	2	3	3	20	10.8
Oklahoma	02/02/2022	*	15:53	0-5	.000	0-0	.000	2-4	.500	3	1	4	8.1	4	0	2	1	1	2	10.4
Texas	02/04/2022	*	13:49	1-2	.500	0-0	.000	4-4	1.000	1	2	3	7.9	5	0	3	0	0	6	10.2
at Texas	02/06/2022	*	23:37	1-6	.167	0-0	.000	2-2	1.000	2	6	8	7.9	4	1	2	2	0	4	9.9
Totals		22	494:49	83-174	.477	0-1	.000	52-66	.788	59	114	173	7.9	54	19	45	37	20	218	9.9

## EGBO'S CAREER STATISTICS

SEASON	TEAM	GP-GS	MIN/AVG	Field Goals		3-Point		F-Throws		Rebounds				Scoring						
				FG-FGA	FG%	3FG-3FGA	3FG%	FT-FTA	FT%	OFF	DEF	TOT	AVG	PF-FO	A	TO	BLK	STL	PTS	AVG
2018-19	Baylor	35-0	354/10.1	72-159	.453	0-0	.000	44-87	.506	65	82	147	4.2	52-1	11	35	32	21	188	5.4
2019-20	Baylor	30-8	553/18.4	142-235	.604	0-2	.000	41-84	.488	68	136	204	6.8	74-2	12	51	32	27	325	10.8
2020-21	Baylor	30-30	746/24.9	135-270	.500	0-0	.000	62-97	.639	89	169	258	8.6	72-1	27	76	56	36	332	11.1
2021-22	Baylor	22-22	495/22.5	83-174	.477	0-1	.000	52-66	.788	59	114	173	7.9	54-2	19	45	37	20	218	9.9
<b>TOTAL</b>		<b>117-60</b>	<b>2148/18.4</b>	<b>432-838</b>	<b>.516</b>	<b>0-3</b>	<b>.000</b>	<b>199-334</b>	<b>.596</b>	<b>281</b>	<b>501</b>	<b>782</b>	<b>6.7</b>	<b>252-6</b>	<b>69</b>	<b>207</b>	<b>157</b>	<b>104</b>	<b>1063</b>	<b>9.1</b>



**#10 • G • 5-8 • JR. • 1L • PLANO, TEXAS (PLANO WEST HS / UCLA)**

**2021-22 NOTABLES**

- Claiming the role of "defensive stopper" this season for the Bears
- Set a career high with five rebounds vs. Texas State (11/9)

**JADEN OWENS**

**MAJOR**

Communication

**CAREER HIGHS**

<b>Points</b>
15, vs. Iowa State [1/16/21]
<b>Rebounds</b>
5, vs. Texas State (11/9/21)
vs. North Texas (12/29/21)
<b>Assists</b>
8, vs. McNeese State [12/19/20]
<b>Blocks</b>
1, vs. Long Beach St. [11/14/19] *
<b>Steals</b>
3, twice
<b>Field Goals</b>
5, vs. Iowa State [1/16/21]
<b>Field Goal Attempts</b>
13, vs. Iowa State [1/16/21]
<b>3-Point Field Goals</b>
4, vs. Iowa State [1/16/21]
<b>3-Point Field Goal Attempts</b>
8, vs. Iowa State [1/16/21]
<b>Free Throws</b>
3, three times *
<b>Free Throw Attempts</b>
6, at Washington State [2/21/20] *
<b>Minutes Played</b>
34, vs. Iowa State [1/16/21]

\* Accomplished at UCLA

**MISCELLANEOUS**

Double Figure Scoring	1
Led BU in Scoring	1
Led BU in Assists	1

**2021-22 GAME-BY-GAME STATISTICS**

Opponent	Date	GS	MIN	Total FG-FGA	PCT	3FG-3FGA	PCT	Free throws FT-FTA	PCT	Rebounds OFF DEF TOT AVG	PF	A	TO	BLK	STL	PTS	AVG
Texas St.	11/09/2021		27:35	3-6	.500	2-5	.400	0-0	.000	0 5 5 5.0	1	2	1	0	1	8	8.0
at UT Arlington	11/11/2021		24:01	1-4	.250	0-2	.000	1-2	.500	0 2 2 3.5	3	2	1	0	0	3	5.5
New Orleans	11/15/2021		19:32	0-2	.000	0-2	.000	0-0	.000	0 0 0 2.3	0	3	1	0	2	0	3.7
at Maryland	11/21/2021		21:28	1-3	.333	0-2	.000	0-0	.000	1 3 4 2.8	1	0	0	0	1	2	3.3
vs Fordham	11/25/2021		10:39	0-1	.000	0-1	.000	1-2	.500	0 0 0 2.2	2	0	1	0	0	1	2.8
vs Arizona St.	11/26/2021		11:48	0-1	.000	0-0	.000	0-0	.000	0 0 0 1.8	1	0	1	0	1	0	2.3
vs Houston	11/27/2021		14:03	0-3	.000	0-2	.000	2-2	1.000	0 1 1 1.7	2	0	2	0	1	2	2.3
Missouri	12/04/2021		00:39	0-0	.000	0-0	.000	0-0	.000	0 0 0 1.5	0	0	0	0	0	0	2.0
vs Michigan	12/19/2021		06:48	0-0	.000	0-0	.000	0-0	.000	0 0 0 1.3	1	0	0	0	0	0	1.8
North Texas	12/29/2021		19:09	0-1	.000	0-1	.000	0-0	.000	2 3 5 1.7	2	2	1	0	1	0	1.6
at Oklahoma	01/12/2022		07:54	0-0	.000	0-0	.000	0-0	.000	0 1 1 1.6	0	1	2	0	0	0	1.5
at Kansas	01/16/2022		13:21	1-2	.500	1-2	.500	0-0	.000	1 0 1 1.6	0	4	0	0	2	3	1.6
Oklahoma St.	01/19/2022		18:40	0-2	.000	0-2	.000	0-0	.000	0 0 0 1.5	1	1	1	0	1	0	1.5
Iowa St.	01/23/2022		25:33	2-4	.500	1-2	.500	0-0	.000	0 3 3 1.6	3	4	2	0	2	5	1.7
at Texas Tech	01/26/2022		14:49	0-0	.000	0-0	.000	0-0	.000	0 2 2 1.6	1	1	1	0	0	0	1.6
at West Virginia	01/29/2022		21:40	1-2	.500	1-2	.500	1-2	.500	0 4 4 1.8	1	1	1	0	1	4	1.8
Oklahoma	02/02/2022		18:56	1-6	.167	0-3	.000	0-0	.000	0 2 2 1.8	2	1	0	0	2	2	1.8
Texas	02/04/2022		14:52	0-1	.000	0-0	.000	2-2	1.000	0 1 1 1.7	2	2	0	0	0	2	1.8
at Texas	02/06/2022		17:27	0-2	.000	0-2	.000	0-0	.000	0 2 2 1.7	0	0	0	0	0	0	1.7
<b>Totals</b>		<b>0</b>	<b>308:53</b>	<b>10-40</b>	<b>.250</b>	<b>5-28</b>	<b>.179</b>	<b>7-10</b>	<b>.700</b>	<b>4 29 33 1.7</b>	<b>23</b>	<b>24</b>	<b>15</b>	<b>0</b>	<b>15</b>	<b>32</b>	<b>1.7</b>

**OWENS'S CAREER STATISTICS**

				Field Goals		3-Point		F-Throws		Rebounds									Scoring	
SEASON	TEAM	GP-GS	MIN/AVG	FG-FGA	FG%	3FG-3FGA	3FG%	FT-FTA	FT%	OFF	DEF	TOT	AVG	PF-FO	A	TO	BLK	STL	PTS	AVG
2019-20	UCLA	28-0	268/9.6	21-76	.276	10-42	.238	19-28	.679	5	19	24	0.9	19-0	34	19	1	18	71	2.5
2020-21	Baylor	17-0	151/8.9	15-39	.385	7-20	.350	3-7	.429	2	13	15	0.9	17-0	38	8	0	13	40	2.4
2021-22	Baylor	19-0	309/16.3	10-40	.250	5-28	.179	7-10	.700	4	29	33	1.7	23-0	24	15	0	15	32	1.7
TOTAL FOR Baylor		36-0	459/12.8	25-79	.316	12-48	.250	10-17	.588	6	42	48	1.3	40-0	62	23	0	28	72	2.0
TOTAL		64-0	727/11.4	46-155	.297	22-90	.244	29-45	.644	11	61	72	1.1	59-0	96	42	1	46	143	2.2



**#11 • 5-10 • G • FR • HS • BELLE MEAD, N.J. (MONTGOMERY HS)**

**2021-22 NOTABLES**

- Made her Baylor debut at UT Arlington (11/11)
- Notched her first career block in the final seconds against Houston (11/27)
- Played a career-high 10 minutes vs. Alcorn State (12/8)
- Made her Big 12 debut at West Virginia (1/29)

**ANDREA  
KATRAMADOS**

**MAJOR**

Data Science

**CAREER HIGHS**

**Points**

**Rebounds**

**Assists**

**Blocks**

1, vs. Houston (11/27/21)

**Steals**

**Field Goals**

**Field Goal Attempts**

3, vs. Alcorn State (12/8/21)

**3-Point Field Goals**

**3-Point Field Goal Attempts**

2, vs. Alcorn State (12/8/21)

vs. Iowa State (1/23/22)

**Free Throws**

**Free Throw Attempts**

**Minutes Played**

10, vs. Alcorn State (12/8/21)

**MISCELLANEOUS**

Double-Figure Scoring

Double-Figure Rebounding

Double-Doubles

Led Team in Rebounds

Led Team in Steals

Led Team in Blocks

Led Team in Assists

**2021-22 GAME-BY-GAME STATISTICS**

Opponent	Date	GS	MIN	Total		3-Pointers		Free throws		Rebounds										
				FG-FGA	PCT	3FG-3FGA	PCT	FT-FTA	PCT	OFF	DEF	TOT	AVG	PF	A	TO	BLK	STL	PTS	AVG
at UT Arlington	11/11/2021		02:37	0-0	.000	0-0	.000	0-0	.000	0	0	0	0.0	0	0	0	0	0	0	0.0
vs Fordham	11/25/2021		02:01	0-0	.000	0-0	.000	0-0	.000	0	0	0	0.0	0	0	0	0	0	0	0.0
vs Houston	11/27/2021		01:37	0-0	.000	0-0	.000	0-0	.000	0	0	0	0.0	0	0	0	1	0	0	0.0
Alcorn	12/08/2021		10:00	0-3	.000	0-2	.000	0-0	.000	0	0	0	0.0	0	0	0	0	0	0	0.0
North Texas	12/29/2021		02:11	0-0	.000	0-0	.000	0-0	.000	0	0	0	0.0	0	0	1	0	0	0	0.0
Iowa St.	01/23/2022		02:18	0-2	.000	0-2	.000	0-0	.000	0	0	0	0.0	0	0	0	0	0	0	0.0
at West Virginia	01/29/2022		02:47	0-1	.000	0-0	.000	0-0	.000	0	0	0	0.0	0	0	0	0	0	0	0.0
Totals		0	23:31	0-6	.000	0-4	.000	0-0	.000	0	0	0	0.0	0	0	1	1	0	0	0.0

**KATRAMADOS'S CAREER STATISTICS**

				Field Goals		3-Point		F-Throws		Rebounds									Scoring	
SEASON	TEAM	GP-GS	MIN/AVG	FG-FGA	FG%	3FG-3FGA	3FG%	FT-FTA	FT%	OFF	DEF	TOT	AVG	PF-FO	A	TO	BLK	STL	PTS	AVG
2021-22	Baylor	7-0	24/3.4	0-6	.000	0-4	.000	0-0	.000	0	0	0	0.0	0-0	0	1	1	0	0	0.0
TOTAL		7-0	24/3.4	0-6	.000	0-4	.000	0-0	.000	0	0	0	0.0	0-0	0	1	1	0	0	0.0





## JA'MEE ASBERRY

### MAJOR

Educational Psychology (Master's)

### CAREER HIGHS

<b>Points</b>	28, twice vs. Oklahoma (3/12/21) *
<b>Rebounds</b>	7, vs. North Texas (12/29/21)
<b>Assists</b>	9, at TCU (1/6/21) *
<b>Blocks</b>	1, multiple times *
<b>Steals</b>	5, vs. Southern U. (12/2/20) *
<b>Field Goals</b>	11, vs. Texas Tech (1/2/21) *
<b>Field Goal Attempts</b>	29, vs. Oklahoma (3/12/21) *
<b>3-Point Field Goals</b>	6, 5X last at Kansas (1/16/22)
<b>3-Point Field Goal Attempts</b>	17, vs. Oklahoma (3/12/21) *
<b>Free Throws</b>	5, twice last vs. Baylor (1/20/21) *
<b>Free Throw Attempts</b>	8, vs. Oklahoma (3/12/21) *
<b>Minutes Played</b>	43, vs. Oklahoma (3/12/21) *

### MISCELLANEOUS

<b>Double-Figure Scoring</b>	42
<b>Double-Doubles</b>	3
<b>20+ Point Games</b>	21
<b>30+ Point Games</b>	1

\* Accomplished at Oklahoma State

## #21 • 5-5 • G • JR • TR • TULSA, OKLA. (EAST CENTRAL HS / OKLAHOMA STATE)

### 2021-22 AWARDS

- PRESEASON ALL-BIG 12 HONORABLE MENTION

### 2021-22 NOTABLES

- Made her Baylor debut vs. Texas State
- Went 5-for-11 from the perimeter at UT Arlington
- Tied her career high with six 3s vs. Alcorn State to record her 20th career 20-point game against the Lady Braves
- Hit six 3s again at Kansas. Nailed her sixth of the game to cut KU's lead to one with less than 20 seconds left. Then drained a pair of free throws with eight seconds left to give the Bears the lead.
- Surpassed the 1,000-point mark at Oklahoma (1/12)
- Nearing the top 10 in program history with 56 made 3s (Needs 62 for 10th)

## 2021-22 GAME-BY-GAME STATISTICS

Opponent	Date	GS	MIN	Total		3-Pointers		Free throws		Rebounds				PF	A	TO	BLK	STL	PTS	AVG
				FG-FGA	PCT	3FG-3FGA	PCT	FT-FTA	PCT	OFF	DEF	TOT	AVG							
Texas St.	11/09/2021	*	29:59	1-7	.143	1-6	.167	0-0	.000	0	5	5	5.0	1	2	2	0	0	3	3.0
at UT Arlington	11/11/2021	*	27:02	6-15	.400	5-11	.455	0-0	.000	1	0	1	3.0	1	2	1	0	0	17	10.0
New Orleans	11/15/2021	*	24:00	2-9	.222	1-7	.143	0-0	.000	0	1	1	2.3	2	3	2	0	2	5	8.3
at Maryland	11/21/2021	*	26:12	0-5	.000	0-4	.000	0-0	.000	0	2	2	2.3	0	3	2	0	2	0	6.3
vs Fordham	11/25/2021	*	29:24	4-6	.667	2-4	.500	0-0	.000	0	1	1	2.0	1	1	1	0	0	10	7.0
vs Arizona St.	11/26/2021	*	35:43	3-7	.429	1-4	.250	0-0	.000	1	1	2	2.0	1	1	1	0	1	7	7.0
vs Houston	11/27/2021	*	36:35	3-10	.300	2-7	.286	4-4	1.000	2	2	4	2.3	1	0	3	0	3	12	7.7
Morehead St.	11/30/2021	*	37:48	5-13	.385	4-12	.333	0-0	.000	0	1	1	2.1	0	4	2	0	2	14	8.5
Missouri	12/04/2021	*	37:01	3-8	.375	2-5	.400	1-2	.500	0	1	1	2.0	3	1	3	0	2	9	8.6
Alcorn	12/08/2021	*	34:05	7-11	.636	6-8	.750	0-0	.000	0	2	2	2.0	1	2	0	1	2	20	9.7
vs Michigan	12/19/2021	*	41:12	3-7	.429	0-4	.000	1-2	.500	0	1	1	1.9	4	0	3	0	1	7	9.5
North Texas	12/29/2021	*	35:01	1-6	.167	1-5	.200	0-0	.000	0	7	7	2.3	2	5	0	0	2	3	8.9
at Kansas St.	01/02/2022	*	36:28	5-10	.500	4-7	.571	0-0	.000	1	2	3	2.4	2	0	1	0	0	14	9.3
at Oklahoma	01/12/2022	*	37:46	2-4	.500	2-2	1.000	2-2	1.000	0	0	0	2.2	1	0	1	0	0	8	9.2
at Kansas	01/16/2022	*	37:50	6-12	.500	6-11	.545	2-2	1.000	1	4	5	2.4	2	2	0	0	0	20	9.9
Oklahoma St.	01/19/2022	*	36:20	3-6	.500	1-3	.333	2-2	1.000	0	1	1	2.3	0	3	0	1	4	9	9.9
Iowa St.	01/23/2022	*	29:46	1-2	.500	1-2	.500	0-0	.000	0	3	3	2.4	4	3	1	0	0	3	9.5
at Texas Tech	01/26/2022	*	32:26	3-4	.750	3-4	.750	0-0	.000	0	2	2	2.3	1	2	2	0	1	9	9.4
at West Virginia	01/29/2022	*	35:13	3-13	.231	3-10	.300	0-0	.000	1	3	4	2.4	0	3	1	0	1	9	9.4
Oklahoma	02/02/2022	*	39:31	4-12	.333	4-11	.364	3-4	.750	1	2	3	2.5	3	4	2	0	2	15	9.7
Texas	02/04/2022	*	36:55	5-12	.417	4-10	.400	1-1	1.000	0	4	4	2.5	0	1	1	0	1	15	10.0
at Texas	02/06/2022	*	31:34	5-9	.556	3-5	.600	0-0	.000	0	4	4	2.6	1	0	1	0	2	13	10.1
Totals		22	747:50	75-188	.399	56-142	.394	16-19	.842	8	49	57	2.6	31	42	30	2	28	222	10.1

## ASBERRY'S CAREER STATISTICS

SEASON	TEAM	GP-GS	MIN/AVG	Field Goals		3-Point		F-Throws		Rebounds				Scoring						
				FG-FGA	FG%	3FG-3FGA	3FG%	FT-FTA	FT%	OFF	DEF	TOT	AVG	PF-FO	A	TO	BLK	STL	PTS	AVG
2018-19	OSU	30-17	573/19.1	63-204	.309	31-105	.295	37-51	.725	13	46	59	2.0	45-0	60	58	4	39	194	6.5
2019-20	OSU	30-20	801/26.7	70-255	.275	30-125	.240	33-50	.660	7	69	76	2.5	55-1	94	34	4	41	203	6.8
2020-21	OSU	28-28	980/35.0	177-447	.396	78-186	.419	44-63	.698	8	64	72	2.6	41-0	105	61	3	44	476	17.0
2021-22	Baylor	22-22	748/34.0	75-188	.399	56-142	.394	16-19	.842	8	49	57	2.6	31-0	42	30	2	28	222	10.1
<b>TOTAL FOR Baylor</b>		<b>22-22</b>	<b>748/34.0</b>	<b>75-188</b>	<b>.399</b>	<b>56-142</b>	<b>.394</b>	<b>16-19</b>	<b>.842</b>	<b>8</b>	<b>49</b>	<b>57</b>	<b>2.6</b>	<b>31-0</b>	<b>42</b>	<b>30</b>	<b>2</b>	<b>28</b>	<b>222</b>	<b>10.1</b>
<b>TOTAL</b>		<b>110-87</b>	<b>3101/28.2</b>	<b>385-1094</b>	<b>.352</b>	<b>195-558</b>	<b>.349</b>	<b>130-183</b>	<b>.710</b>	<b>36</b>	<b>228</b>	<b>264</b>	<b>2.4</b>	<b>172-1</b>	<b>301</b>	<b>183</b>	<b>13</b>	<b>152</b>	<b>1095</b>	<b>10.0</b>



## SARAH ANDREWS

### MAJOR

Undeclared

### CAREER HIGHS

<b>Points</b>	25, at Kansas (1/16/22)
<b>Rebounds</b>	8, vs. Texas State (11/9/21)
	vs. Texas (2/4/22)
<b>Assists</b>	9, vs. Houston (11/27/21)
<b>Blocks</b>	1, vs. McNeese State (12/19/20)
	vs. North Texas (12/29/21)
<b>Steals</b>	5, vs. Texas (2/4/22)
<b>Field Goals</b>	9, vs. Oklahoma (2/2/22)
<b>Field Goal Attempts</b>	20, vs. Oklahoma (2/2/22)
<b>3-Point Field Goals</b>	7, at Kansas (1/16/22)
<b>3-Point Field Goal Attempts</b>	11, vs. TCU (1/26/21)
<b>Free Throws</b>	6, vs. Texas (2/4/22)
<b>Free Throw Attempts</b>	7, vs. Texas (2/4/22)
<b>Minutes Played</b>	42 vs. Michigan (12/19/21)

### MISCELLANEOUS

Double Figure Scoring	15
Led Team in Steals	9
Led Team in Assists	6

## #24 • 5-6 • G • SO • 1L • IRVING, TEXAS (MACARTHUR HS)

### 2021-22 NOTABLES

- Set a career high with eight rebounds vs. Texas State (11/9)
- Was three points shy of her career high with 15 points at UT Arlington (11/11)
- Set career highs in free throws (3 for 3) and minutes played (31) at UT Arlington (11/11)
- Dropped a career-best eight dimes at No. 3 Maryland (11/21). She finished the game with 10 points, six boards and eight assists.
- Topped that mark with nine assists vs. Houston less than a week later (11/27).
- Started 6-for-6 from deep to finish with a career-high 20 points against Morehead State (11/30).
- Topped those totals with a 7-for-10 showing from the perimeter for a career-best 25 points at Kansas (1/16)
- Went 4-for-5 from deep against Iowa State (1/23)
- Is No. 6 in the country with a 47 3-point percentage
- Scored 15 of her 19 points in the second half at Texas Tech (1/26)

### 2021-22 GAME-BY-GAME STATISTICS

Opponent	Date	GS	MIN	Total		3-Pointers		Free throws		Rebounds				PF	A	TO	BLK	STL	PTS	AVG
				FG-FGA	PCT	3FG-3FGA	PCT	FT-FTA	PCT	OFF	DEF	TOT	AVG							
Texas St.	11/09/2021	*	30:14	2-11	.182	0-6	.000	4-6	.667	2	6	8	8.0	0	2	2	0	2	8	8.0
at UT Arlington	11/11/2021	*	30:58	5-15	.333	1-5	.200	4-5	.800	1	5	6	7.0	2	3	0	0	1	15	11.5
New Orleans	11/15/2021	*	29:45	5-8	.625	2-4	.500	0-0	.000	0	4	4	6.0	3	6	2	0	1	12	11.7
at Maryland	11/21/2021	*	37:02	4-14	.286	2-7	.286	0-0	.000	4	2	6	6.0	2	8	5	0	0	10	11.3
vs Fordham	11/25/2021	*	31:36	4-8	.500	2-2	1.000	0-0	.000	0	1	1	5.0	1	2	0	0	3	10	11.0
vs Arizona St.	11/26/2021	*	27:52	2-9	.222	1-2	.500	0-3	.000	1	2	3	4.7	4	1	1	0	1	5	10.0
vs Houston	11/27/2021	*	27:60	2-7	.286	1-1	1.000	2-2	1.000	0	3	3	4.4	0	9	1	0	1	7	9.6
Morehead St.	11/30/2021	*	36:25	7-12	.583	6-8	.750	0-0	.000	1	3	4	4.4	1	4	1	0	2	20	10.9
Missouri	12/04/2021	*	30:11	4-9	.444	1-5	.200	1-4	.250	0	3	3	4.2	3	1	1	0	0	10	10.8
Alcorn	12/08/2021	*	27:18	6-11	.545	2-3	.667	0-0	.000	0	5	5	4.3	0	5	2	0	3	14	11.1
vs Michigan	12/19/2021	*	42:00	7-17	.412	2-4	.500	0-1	.000	0	1	1	4.0	1	0	2	0	3	16	11.5
North Texas	12/29/2021	*	29:24	4-15	.267	3-8	.375	0-0	.000	0	0	0	3.7	5	4	3	1	0	11	11.5
at Kansas St.	01/02/2022	*	24:30	2-8	.250	1-3	.333	0-0	.000	0	0	0	3.4	1	2	3	0	0	5	11.0
at Oklahoma	01/12/2022	*	34:37	0-4	.000	0-2	.000	5-6	.833	0	2	2	3.3	4	2	4	0	2	5	10.6
at Kansas	01/16/2022	*	37:15	8-14	.571	7-10	.700	2-2	1.000	4	0	4	3.3	1	6	1	0	2	25	11.5
Oklahoma St.	01/19/2022	*	28:21	1-6	.167	0-2	.000	0-0	.000	0	1	1	3.2	0	1	3	1	0	2	10.9
Iowa St.	01/23/2022	*	33:50	7-13	.538	4-5	.800	0-0	.000	0	2	2	3.1	2	5	2	0	0	18	11.4
at Texas Tech	01/26/2022	*	34:27	7-10	.700	2-3	.667	3-4	.750	0	3	3	3.1	2	3	1	0	1	19	11.8
at West Virginia	01/29/2022	*	29:23	6-8	.750	2-3	.667	1-2	.500	0	2	2	3.1	1	4	1	1	0	15	11.9
Oklahoma	02/02/2022	*	35:49	9-20	.450	3-10	.300	2-3	.667	0	2	2	3.0	1	6	4	0	2	23	12.5
Texas	02/04/2022	*	36:14	5-11	.455	1-3	.333	6-7	.857	0	7	7	3.2	3	8	6	1	5	17	12.7
at Texas	02/06/2022	*	35:53	1-7	.143	0-3	.000	2-2	1.000	0	3	3	3.2	1	4	0	0	2	4	12.3
Totals		22	711:05	98-237	.414	43-99	.434	32-47	.681	13	57	70	3.2	38	86	45	4	31	271	12.3

### ANDREWS'S CAREER STATISTICS

				Field Goals		3-Point		F-Throws		Rebounds								Scoring		
SEASON	TEAM	GP-GS	MIN/AVG	FG-FGA	FG%	3FG-3FGA	3FG%	FT-FTA	FT%	OFF	DEF	TOT	AVG	PF-FO	A	TO	BLK	STL	PTS	AVG
2020-21	Baylor	31-1	351/11.3	50-133	.376	26-67	.388	3-5	.600	8	30	38	1.2	36-1	38	33	2	19	129	4.2
2021-22	Baylor	22-22	711/32.3	98-237	.414	43-99	.434	32-47	.681	13	57	70	3.2	38-1	86	45	4	31	271	12.3
TOTAL		53-23	1062/20.0	148-370	.400	69-166	.416	35-52	.673	21	87	108	2.0	74-2	124	78	6	50	400	7.5



## KENDRA GILLISPIE

### MAJOR

Undecided

### CAREER HIGHS

<b>Points</b>
6, vs. North Texas (12/29/21)
<b>Rebounds</b>
5, vs. Alcorn State (12/8/21)
<b>Assists</b>
1, vs. Alcorn State (12/8/21)
vs. New Orleans (11/15/21)
<b>Blocks</b>
1, vs. Fordham (11/25/21)
<b>Steals</b>
1, vs. Alcorn State (12/8/21)
<b>Field Goals</b>
2, vs. North Texas (12/29/21)
<b>Field Goal Attempts</b>
4, vs. Alcorn State (12/8/21)
<b>3-Point Field Goals</b>
<b>3-Point Field Goal Attempts</b>
1, vs. Alcorn State (12/8/21)
<b>Free Throws</b>
3, vs. Alcorn State (12/8/21)
<b>Free Throw Attempts</b>
4, vs. Alcorn State (12/8/21)
<b>Minutes Played</b>
22, vs. Alcorn State (12/8/21)

### MISCELLANEOUS

Double-Figure Scoring  
 Double-Figure Rebounding  
 Double-Doubles  
 Led Team in Rebounds  
 Led Team in Steals  
 Led Team in Blocks  
 Led Team in Assists

## #25 • 6-2 • F • FR • HS • OKLAHOMA CITY, OKLA. (HARDING CHARTER PREP)

### 2021-22 NOTABLES

- Made her Baylor debut at UT Arlington (11/11)
- Recorded her first career points as a Bear vs. New Orleans (11/15)
- Logged a career-high 8 minutes vs. Houston (11/27) at that time
- Had a career game vs. Alcorn State in 21 minutes of action
- Went 2-2 from the floor for a career-high six points vs. North Texas (12/29/21)
- Made her Big 12 debut at West Virginia (1/29)

### 2021-22 GAME-BY-GAME STATISTICS

Opponent	Date	GS	MIN	Total		3-Pointers		Free throws		Rebounds				PF							PTS	AVG
				FG-FGA	PCT	3FG-3FGA	PCT	FT-FTA	PCT	OFF	DEF	TOT	AVG	A	TO	BLK	STL	PTS				
at UT Arlington	11/11/2021		03:21	0-1	.000	0-0	.000	0-0	.000	0	1	1	1.0	2	0	0	0	0	0	0.0		
New Orleans	11/15/2021		04:53	1-1	1.000	0-0	.000	1-1	1.000	0	0	0	0.5	0	1	0	0	0	3	1.5		
vs Fordham	11/25/2021		03:21	0-1	.000	0-0	.000	2-2	1.000	1	0	1	0.7	1	0	1	1	0	2	1.7		
vs Houston	11/27/2021		07:26	0-1	.000	0-0	.000	0-0	.000	0	1	1	0.8	0	0	0	0	0	0	1.3		
Morehead St.	11/30/2021		05:33	0-2	.000	0-0	.000	0-0	.000	1	0	1	0.8	0	0	1	0	0	0	1.0		
Alcorn	12/08/2021		21:37	1-4	.250	0-1	.000	3-4	.750	1	4	5	1.5	0	1	0	0	1	5	1.7		
North Texas	12/29/2021		06:05	2-2	1.000	0-0	.000	2-2	1.000	2	1	3	1.7	0	0	0	0	0	6	2.3		
at West Virginia	01/29/2022		07:01	2-4	.500	0-0	.000	1-1	1.000	1	0	1	1.6	0	0	1	0	0	5	2.6		
Totals		0	59:17	6-16	.375	0-1	.000	9-10	.900	6	7	13	1.6	3	2	3	1	1	21	2.6		

### GILLISPIE'S CAREER STATISTICS

				Field Goals		3-Point		F-Throws		Rebounds				Scoring						
SEASON	TEAM	GP-GS	MIN/AVG	FG-FGA	FG%	3FG-3FGA	3FG%	FT-FTA	FT%	OFF	DEF	TOT	AVG	PF-FO	A	TO	BLK	STL	PTS	AVG
2021-22	Baylor	8-0	59/7.4	6-16	.375	0-1	.000	9-10	.900	6	7	13	1.6	3-0	2	3	1	1	21	2.6
<b>TOTAL</b>		<b>8-0</b>	<b>59/7.4</b>	<b>6-16</b>	<b>.375</b>	<b>0-1</b>	<b>.000</b>	<b>9-10</b>	<b>.900</b>	<b>6</b>	<b>7</b>	<b>13</b>	<b>1.6</b>	<b>3-0</b>	<b>2</b>	<b>3</b>	<b>1</b>	<b>1</b>	<b>21</b>	<b>2.6</b>



# CAITLIN BICKLE

## MAJOR

Sport Management (Master's)

## CAREER HIGHS

<b>Points</b>	
13 vs. Alcorn State (12/8/21)	
vs. North Texas (12/29/21)	
<b>Rebounds</b>	
8 at UT Arlington (11/11/21)	
vs. Arizona State (11/26/21)	
<b>Assists</b>	
6 vs. Alcorn State (12/8/21)	
<b>Blocks</b>	
3 vs. Georgia (12/4/19)	
<b>Steals</b>	
3 vs. Alcorn State (12/8/21)	
at Kansas State (1/2/22)	
<b>Field Goals</b>	
4, 4X last at Kansas (1/16/22)	
<b>Field Goal Attempts</b>	
8, vs. New Orleans (11/15/21)	
<b>3-Point Field Goals</b>	
2 vs. Southern (11/15/18);	
vs. Nicholls (11/6/18)	
<b>3-Point Field Goal Attempts</b>	
4 vs. Southern (11/15/18)	
<b>Free Throws</b>	
9 vs. Alcorn State (12/8/21)	
<b>Free Throw Attempts</b>	
10 vs. Alcorn State (12/8/21)	
<b>Minutes Played</b>	
30 vs. Alcorn State (12/8/21)	

## MISCELLANEOUS

Double-Figure Scoring	9
Led Team in Rebounds	1
Led Team in Steals	2
Led Team in Assists	2
Led Team in Blocks	3

## #51 • 6-0 • F • SR • 3L • CAVE CREEK, ARIZ. (CACTUS SHADOWS HS)

### 2021-22 NOTABLES

- Had an all-around game for the Bears at UT Arlington (11/11) with seven points, eight rebounds (career high), three assists, two blocks and a handful of charges taken all in a career-high 29 minutes.
- Recorded a career game with 13 points and a team-best six assists against Alcorn State (12/8)
- Tied her career high with 13 points against North Texas (12/29)
- Set a career high twice in 2021-22 with three steals against Alcorn State and at Kansas State

## 2021-22 GAME-BY-GAME STATISTICS

Opponent	Date	GS	MIN	Total		3-Pointers		Free throws		Rebounds				PF	A	TO	BLK	STL	PTS	AVG
				FG-FGA	PCT	3FG-3FGA	PCT	FT-FTA	PCT	OFF	DEF	TOT	AVG							
Texas St.	11/09/2021		17:43	2-4	.500	0-2	.000	1-2	.500	0	0	0	0.0	2	1	0	0	0	5	5.0
at UT Arlington	11/11/2021		28:36	2-4	.500	0-0	.000	3-3	1.000	3	5	8	4.0	1	3	2	2	0	7	6.0
New Orleans	11/15/2021		17:55	3-8	.375	0-1	.000	4-6	.667	2	3	5	4.3	0	0	0	0	1	10	7.3
at Maryland	11/21/2021		24:59	1-3	.333	0-1	.000	0-0	.000	0	4	4	4.3	4	0	1	1	0	2	6.0
vs Fordham	11/25/2021		19:49	3-7	.429	1-3	.333	1-1	1.000	1	5	6	4.6	1	0	4	0	0	8	6.4
vs Arizona St.	11/26/2021		24:56	2-3	.667	0-1	.000	1-1	1.000	3	5	8	5.2	2	3	2	0	1	5	6.2
vs Houston	11/27/2021		20:19	3-4	.750	1-1	1.000	2-2	1.000	1	5	6	5.3	1	1	1	0	0	9	6.6
Morehead St.	11/30/2021		18:32	3-6	.500	0-2	.000	3-3	1.000	4	2	6	5.4	1	1	0	0	0	9	6.9
Missouri	12/04/2021		24:48	4-7	.571	0-2	.000	3-4	.750	0	2	2	5.0	2	3	0	0	1	11	7.3
Alcorn	12/08/2021		30:13	2-6	.333	0-2	.000	9-10	.900	1	5	6	5.1	1	6	2	0	2	13	7.9
vs Michigan	12/19/2021		27:27	2-7	.286	1-3	.333	0-0	.000	0	3	3	4.9	5	2	1	0	0	5	7.6
North Texas	12/29/2021		24:33	5-9	.556	3-4	.750	0-0	.000	1	5	6	5.0	4	1	5	1	0	13	8.1
at Kansas St.	01/02/2022		24:03	3-7	.429	0-3	.000	1-1	1.000	1	1	2	4.8	4	1	5	1	3	7	8.0
at Oklahoma	01/12/2022		19:25	5-10	.500	0-1	.000	1-2	.500	1	2	3	4.6	2	2	1	0	1	11	8.2
at Kansas	01/16/2022		24:45	4-6	.667	0-1	.000	0-0	.000	3	1	4	4.6	5	2	1	2	0	8	8.2
Oklahoma St.	01/19/2022		20:03	3-6	.500	0-2	.000	2-5	.400	2	2	4	4.6	1	1	1	0	1	8	8.2
Iowa St.	01/23/2022		19:13	2-7	.286	0-2	.000	2-2	1.000	3	1	4	4.5	1	4	1	1	1	6	8.1
at Texas Tech	01/26/2022		31:02	4-6	.667	0-0	.000	4-4	1.000	4	3	7	4.7	2	2	1	0	1	12	8.3
at West Virginia	01/29/2022		24:18	1-4	.250	0-2	.000	2-2	1.000	0	1	1	4.5	0	2	1	1	0	4	8.1
Oklahoma	02/02/2022		26:49	4-6	.667	0-1	.000	3-5	.600	0	4	4	4.5	4	1	0	0	1	11	8.2
Texas	02/04/2022		29:26	3-5	.600	0-0	.000	0-0	.000	1	1	2	4.3	4	2	0	0	0	6	8.1
at Texas	02/06/2022		21:39	1-4	.250	1-2	.500	2-2	1.000	3	0	3	4.3	3	0	3	0	0	5	8.0
<b>Totals</b>		<b>0</b>	<b>520:33</b>	<b>62-129</b>	<b>.481</b>	<b>7-36</b>	<b>.194</b>	<b>44-55</b>	<b>.800</b>	<b>34</b>	<b>60</b>	<b>94</b>	<b>4.3</b>	<b>50</b>	<b>38</b>	<b>32</b>	<b>9</b>	<b>13</b>	<b>175</b>	<b>8.0</b>

## BICKLE'S CAREER STATISTICS

SEASON	TEAM	GP-GS	MIN/AVG	Field Goals		3-Point		F-Throws		Rebounds				Scoring						
				FG-FGA	FG%	3FG-3FGA	3FG%	FT-FTA	FT%	OFF	DEF	TOT	AVG	PF-FO	A	TO	BLK	STL	PTS	AVG
2018-19	Baylor	28-0	162/5.8	19-42	.452	6-14	.429	12-18	.667	16	16	32	1.1	14-0	8	15	3	11	56	2.0
2019-20	Baylor	26-0	236/9.1	29-52	.558	3-11	.273	11-17	.647	14	41	55	2.1	23-0	20	15	5	4	72	2.8
2020-21	Baylor	29-1	418/14.4	48-99	.485	9-26	.346	27-34	.794	46	81	127	4.4	45-0	26	19	8	14	132	4.6
2021-22	Baylor	22-0	521/23.7	62-129	.481	7-36	.194	44-55	.800	34	60	94	4.3	50-2	38	32	9	13	175	8.0
<b>TOTAL</b>		<b>105-1</b>	<b>1337/12.7</b>	<b>158-322</b>	<b>.491</b>	<b>25-87</b>	<b>.287</b>	<b>94-124</b>	<b>.758</b>	<b>110</b>	<b>198</b>	<b>308</b>	<b>2.9</b>	<b>132-2</b>	<b>92</b>	<b>81</b>	<b>25</b>	<b>42</b>	<b>435</b>	<b>4.1</b>



**2021-22 OVERALL STATISTICS**

**Game Records**

Record	Overall	Home	Away	Neutral
ALL GAMES	17-5	9-1	5-3	3-1
CONFERENCE	7-3	3-1	4-2	0-0
NON-CONFERENCE	10-2	6-0	1-1	3-1

**Score by Periods**

Team	1st	2nd	3rd	4th	OT	TOT
Baylor	425	386	464	385	9	1669
Opponents	297	333	345	352	15	1342

**Team Box Score**

No. Player					Total		3-Point		F-Throw		Rebounds											
		GP-GS	MIN	AVG	FG-FGA	FG%	3FG-3FGA	3FG%	FT-FTA	FT%	OFF	DEF	TOT	AVG	PF	DQ	A	TO	BLK	STL	PTS	AVG
1	SMITH, NaLyssa	22-22	717:38	32.6	179-330	.542	6-23	.261	94-123	.764	81	169	250	11.4	58	0	27	59	23	16	458	20.8
24	ANDREWS, Sarah	22-22	711:05	32.3	98-237	.414	43-99	.434	32-47	.681	13	57	70	3.2	38	1	86	45	4	31	271	12.3
3	LEWIS, Jordan	22-22	695:33	31.6	78-183	.426	29-88	.330	66-101	.653	15	60	75	3.4	59	0	115	53	3	28	251	11.4
21	ASBERRY, Ja'Mee	22-22	747:50	34.0	75-188	.399	56-142	.394	16-19	.842	8	49	57	2.6	31	0	42	30	2	28	222	10.1
4	EGBO, Queen	22-22	494:49	22.5	83-174	.477	0-1	.000	52-66	.788	59	114	173	7.9	54	2	19	45	37	20	218	9.9
51	BICKLE, Caitlin	22-0	520:33	23.7	62-129	.481	7-36	.194	44-55	.800	34	60	94	4.3	50	2	38	32	9	13	175	8.0
25	GILLISPIE, Kendra	8-0	59:17	7.4	6-16	.375	0-1	.000	9-10	.900	6	7	13	1.6	3	0	2	3	1	1	21	2.6
22	MCDANIEL, Kamaria	10-0	145:51	14.6	6-20	.300	4-9	.444	5-12	.417	3	16	19	1.9	7	0	13	11	3	0	21	2.1
10	OWENS, Jaden	19-0	308:53	16.3	10-40	.250	5-28	.179	7-10	.700	4	29	33	1.7	23	0	24	15	0	15	32	1.7
11	KATRAMADOS, Andrea	7-0	23:31	3.4	0-6	.000	0-4	.000	0-0	.000	0	0	0	0.0	0	0	0	1	1	0	0	0.0
Team											35	37	72					7				
Total		22	4425		597-1323	.451	150-431	.348	325-443	.734	258	598	856	38.9	323	5	366	301	83	152	1669	75.9
Opponents		22	4425		478-1294	.369	130-416	.313	256-340	.753	234	502	736	33.5	447	12	253	356	51	147	1342	61.0

**Team Statistics**

	BAYLOR	OPP
<b>Scoring</b>	<b>1669</b>	<b>1342</b>
Points per game	75.9	61.0
Scoring margin	+14.9	-
<b>Field goals-att</b>	<b>597-1323</b>	<b>478-1294</b>
Field goal pct	.451	.369
<b>3 point fg-att</b>	<b>150-431</b>	<b>130-416</b>
3-point FG pct	.348	.313
3-pt FG made per game	6.8	5.9
<b>Free throws-att</b>	<b>325-443</b>	<b>256-340</b>
Free throw pct	.734	.753
F-Throws made per game	14.8	11.6
<b>Rebounds</b>	<b>856</b>	<b>736</b>
Rebounds per game	38.9	33.5
Rebounding margin	+5.5	-
<b>Assists</b>	<b>366</b>	<b>253</b>
Assists per game	16.6	11.5
<b>Turnovers</b>	<b>301</b>	<b>356</b>
Turnovers per game	13.7	16.2
Turnover margin	+2.5	-
Assist/turnover ratio	1.2	0.7
<b>Steals</b>	<b>152</b>	<b>147</b>
Steals per game	6.9	6.7
<b>Blocks</b>	<b>83</b>	<b>51</b>
Blocks per game	3.8	2.3
<b>Winning streak</b>	<b>2</b>	<b>-</b>
Home win streak	1	-
<b>Attendance</b>	<b>44712</b>	<b>30300</b>
Home games-Avg/Game	10-4471	8-3788
Neutral site-Avg/Game	-	4-2148

**Team Results**

Date	Opponent		Score	Att.
11/09/2021	Texas St.	W	77-70	4180
11/11/2021	at UT Arlington	W	81-54	2182
11/15/2021	New Orleans	W	78-39	4109
11/21/2021	at Maryland	L	76-79	8395
11/25/2021	vs Fordham	W	68-45	103
11/26/2021	vs Arizona St.	W	62-52	155
11/27/2021	vs Houston	W	74-58	129
11/30/2021	Morehead St.	W	73-28	3939
12/04/2021	Missouri	W	70-68	4160
12/08/2021	Alcorn	W	94-40	5838
12/19/2021	vs Michigan	Lot	68-74	8204
12/29/2021	North Texas	W	86-65	4158
01/02/2022	at Kansas St.	L	59-68	2393
01/12/2022	at Oklahoma	L	77-83	2002
01/16/2022	at Kansas	W	82-79	1688
01/19/2022	Oklahoma St.	W	67-49	4078
01/23/2022	Iowa St.	W	87-61	4541
01/26/2022	at Texas Tech	W	88-80	4504
01/29/2022	at West Virginia	W	87-54	3836
02/02/2022	Oklahoma	L	77-78	4274
02/04/2022	Texas	W	75-63	5435
02/06/2022	at Texas	W	63-55	5300

## 2021-22 Big 12 Statistics

### Game Records

Record	Overall	Home	Away	Neutral
ALL GAMES	7-3	3-1	4-2	0-0
CONFERENCE	7-3	3-1	4-2	0-0
NON-CONFERENCE	0-0	0-0	0-0	0-0

### Score by Periods

Team	1st	2nd	3rd	4th	OT	TOT
Baylor	187	189	212	174	0	762
Opponents	142	170	193	165	0	670

### Team Box Score

No.	Player				Total		3-Point		F-Throw		Rebounds											
		GP-GS	MIN	AVG	FG-FGA	FG%	3FG-3FGA	3FG%	FT-FTA	FT%	OFF	DEF	TOT	AVG	PF	DQ	A	TO	BLK	STL	PTS	AVG
1	SMITH, NaLyssa	10-10	346:53	34.7	81-161	.503	2-9	.222	41-53	.774	37	56	93	9.3	31	0	13	26	9	6	205	20.5
24	ANDREWS, Sarah	10-10	330:19	33.0	46-101	.455	20-44	.455	21-26	.808	4	22	26	2.6	16	0	41	25	3	14	133	13.3
21	ASBERRY, Ja'Mee	10-10	353:49	35.4	37-84	.440	31-65	.477	10-11	.909	4	25	29	2.9	14	0	18	10	1	11	115	11.5
4	EGBO, Queen	10-10	220:16	22.0	36-78	.462	0-0	.000	32-38	.842	26	53	79	7.9	31	2	6	23	16	9	104	10.4
3	LEWIS, Jordan	10-10	319:20	31.9	31-75	.413	13-35	.371	28-45	.622	7	36	43	4.3	33	0	55	31	2	15	103	10.3
51	BICKLE, Caitlin	10-0	240:43	24.1	30-61	.492	1-14	.071	17-23	.739	18	16	34	3.4	26	1	17	14	5	8	78	7.8
25	GILLISPIE, Kendra	1-0	07:01	7.0	2-4	.500	0-0	.000	1-1	1.000	1	0	1	1.0	0	0	0	1	0	0	5	5.0
10	OWENS, Jaden	9-0	153:11	17.0	5-19	.263	3-13	.231	3-4	.750	1	15	16	1.8	10	0	15	7	0	8	16	1.8
22	MCDANIEL, Kamaria	2-0	23:23	11.7	1-3	.333	0-1	.000	1-2	.500	0	2	2	1.0	2	0	1	4	0	0	3	1.5
11	KATRAMADOS, Andrea	2-0	05:05	2.5	0-3	.000	0-2	.000	0-0	.000	0	0	0	0.0	0	0	0	0	0	0	0	0.0
Team											16	14	30					3				
Total		10	2000		269-589	.457	70-183	.383	154-203	.759	114	239	353	35.3	163	3	166	144	36	71	762	76.2
Opponents		10	2000		233-566	.412	66-172	.384	138-186	.742	103	220	323	32.3	210	5	137	167	21	73	670	67.0

### Team Statistics

	BAYLOR	OPP
<b>Scoring</b>	<b>762</b>	<b>670</b>
Points per game	76.2	67.0
Scoring margin	+9.2	-
<b>Field goals-att</b>	<b>269-589</b>	<b>233-566</b>
Field goal pct	.457	.412
<b>3 point fg-att</b>	<b>70-183</b>	<b>66-172</b>
3-point FG pct	.383	.384
3-pt FG made per game	7.0	6.6
<b>Free throws-att</b>	<b>154-203</b>	<b>138-186</b>
Free throw pct	.759	.742
F-Throws made per game	15.4	13.8
<b>Rebounds</b>	<b>353</b>	<b>323</b>
Rebounds per game	35.3	32.3
Rebounding margin	+3.0	-
<b>Assists</b>	<b>166</b>	<b>137</b>
Assists per game	16.6	13.7
<b>Turnovers</b>	<b>144</b>	<b>167</b>
Turnovers per game	14.4	16.7
Turnover margin	+2.3	-
Assist/turnover ratio	1.2	0.8
<b>Steals</b>	<b>71</b>	<b>73</b>
Steals per game	7.1	7.3
<b>Blocks</b>	<b>36</b>	<b>21</b>
Blocks per game	3.6	2.1
<b>Winning streak</b>	<b>2</b>	<b>-</b>
Home win streak	1	-
<b>Attendance</b>	<b>18328</b>	<b>19723</b>
Home games-Avg/Game	4-4582	6-3287
Neutral site-Avg/Game	-	0-0

### Team Results

Date	Opponent		Score	Att.
01/02/2022	at Kansas St.	L	59-68	2393
01/12/2022	at Oklahoma	L	77-83	2002
01/16/2022	at Kansas	W	82-79	1688
01/19/2022	Oklahoma St.	W	67-49	4078
01/23/2022	Iowa St.	W	87-61	4541
01/26/2022	at Texas Tech	W	88-80	4504
01/29/2022	at West Virginia	W	87-54	3836
02/02/2022	Oklahoma	L	77-78	4274
02/04/2022	Texas	W	75-63	5435
02/06/2022	at Texas	W	63-55	5300

## 2021-22 LAST FIVE GAMES

## Game Records

Record	Overall	Home	Away	Neutral
ALL GAMES	4-1	1-1	3-0	0-0
CONFERENCE	4-1	1-1	3-0	0-0
NON-CONFERENCE	0-0	0-0	0-0	0-0

## Score by Periods

Team	1st	2nd	3rd	4th	OT	TOT
Baylor	115	85	104	86	0	390
Opponents	63	94	101	72	0	330

## Team Box Score

No.	Player				Total		3-Point		F-Throw		Rebounds														
		GP-GS	MIN	AVG	FG-FGA	FG%	3FG-3FGA	3FG%	FT-FTA	FT%	OFF	DEF	TOT	AVG	PF	DQ	A	TO	BLK	STL	PTS	AVG			
1	SMITH, NaLyssa	5-5	170:29	34.1	46-77	.597	2-5	.400	21-24	.875	19	30	49	9.8	14	0	4	14	4	0	115	23.0			
24	ANDREWS, Sarah	5-5	171:47	34.4	28-56	.500	8-22	.364	14-18	.778	0	17	17	3.4	8	0	25	12	2	10	78	15.6			
21	ASBERRY, Ja'Mee	5-5	175:38	35.1	20-50	.400	17-40	.425	4-5	.800	2	15	17	3.4	5	0	10	7	0	7	61	12.2			
3	LEWIS, Jordan	5-5	152:44	30.5	11-33	.333	3-12	.250	19-26	.731	4	17	21	4.2	16	0	25	17	2	6	44	8.8			
4	EGBO, Queen	5-5	98:36	19.7	15-31	.484	0-0	.000	11-14	.786	8	18	26	5.2	19	1	1	11	7	4	41	8.2			
51	BICKLE, Caitlin	5-0	133:14	26.6	13-25	.520	1-5	.200	11-13	.846	8	9	17	3.4	13	0	7	5	1	2	38	7.6			
25	GILLISPIE, Kendra	1-0	07:01	7.0	2-4	.500	0-0	.000	1-1	1.000	1	0	1	1.0	0	0	0	1	0	0	5	5.0			
10	OWENS, Jaden	5-0	87:44	17.5	2-11	.182	1-7	.143	3-4	.750	0	11	11	2.2	6	0	5	2	0	3	8	1.6			
11	KATRAMADOS, Andrea	1-0	02:47	2.8	0-1	.000	0-0	.000	0-0	.000	0	0	0	0.0	0	0	0	0	0	0	0	0.0			
Team											8	4	12					2							
Total		5	1000		137-288	.476	32-91	.352	84-105	.800	50	121	171	34.2	81	1	77	71	16	32	390	78.0			
Opponents		5	1000		118-299	.395	27-69	.391	67-95	.705	61	103	164	32.8	110	2	67	80	7	40	330	66.0			

## Team Statistics

	BAYLOR	OPP
<b>Scoring</b>	<b>390</b>	<b>330</b>
Points per game	78.0	66.0
Scoring margin	+12.0	-
<b>Field goals-att</b>	<b>137-288</b>	<b>118-299</b>
Field goal pct	.476	.395
<b>3 point fg-att</b>	<b>32-91</b>	<b>27-69</b>
3-point FG pct	.352	.391
3-pt FG made per game	6.4	5.4
<b>Free throws-att</b>	<b>84-105</b>	<b>67-95</b>
Free throw pct	.800	.705
F-Throws made per game	16.8	13.4
<b>Rebounds</b>	<b>171</b>	<b>164</b>
Rebounds per game	34.2	32.8
Rebounding margin	+1.4	-
<b>Assists</b>	<b>77</b>	<b>67</b>
Assists per game	15.4	13.4
<b>Turnovers</b>	<b>71</b>	<b>80</b>
Turnovers per game	14.2	16.0
Turnover margin	+1.8	-
Assist/turnover ratio	1.1	0.8
<b>Steals</b>	<b>32</b>	<b>40</b>
Steals per game	6.4	8.0
<b>Blocks</b>	<b>16</b>	<b>7</b>
Blocks per game	3.2	1.4
<b>Winning streak</b>	<b>2</b>	<b>-</b>
Home win streak	1	-
<b>Attendance</b>	<b>9709</b>	<b>13640</b>
Home games-Avg/Game	2-4855	3-4547
Neutral site-Avg/Game	-	0-0

## Team Results

Date	Opponent		Score	Att.
01/26/2022	at Texas Tech	W	88-80	4504
01/29/2022	at West Virginia	W	87-54	3836
02/02/2022	Oklahoma	L	77-78	4274
02/04/2022	Texas	W	75-63	5435
02/06/2022	at Texas	W	63-55	5300

**2021-22 TEAM GAME-BY-GAME STATISTICS**

Opponent	Date	Score		Total		3-Pointers		Free throws		Rebounds				PF	A	TO	BLK	STL	PTS	AVG
				FG-FGA	PCT	3FG-3FGA	PCT	FT-FTA	PCT	OFF	DEF	TOT	AVG							
Texas St.	11/09/2021	77-70	W	26-62	.419	4-25	.160	21-30	.700	11	33	44	44.0	13	14	16	4	6	77	77.0
at UT Arlington	11/11/2021	81-54	W	29-63	.460	9-25	.360	14-17	.824	12	30	42	43.0	16	16	13	6	4	81	79.0
New Orleans	11/15/2021	78-39	W	30-56	.536	6-22	.273	12-19	.632	14	21	35	40.3	11	20	15	4	8	78	78.7
at Maryland	11/21/2021	76-79	L	33-72	.458	6-25	.240	4-5	.800	15	28	43	41.0	15	16	15	2	3	76	78.0
vs Fordham	11/25/2021	68-45	W	25-58	.431	6-15	.400	12-18	.667	12	29	41	41.0	13	12	17	1	7	68	76.0
vs Arizona St.	11/26/2021	62-52	W	21-57	.368	2-9	.222	18-26	.692	14	28	42	41.2	15	11	11	6	6	62	73.7
vs Houston	11/27/2021	74-58	W	22-58	.379	6-15	.400	24-31	.774	14	36	50	42.4	10	16	12	6	8	74	73.7
Morehead St.	11/30/2021	73-28	W	26-55	.473	13-29	.448	8-11	.727	13	35	48	43.1	7	21	13	4	6	73	73.6
Missouri	12/04/2021	70-68	W	24-56	.429	4-16	.250	18-32	.563	6	29	35	42.2	15	17	10	2	5	70	73.2
Alcorn	12/08/2021	94-40	W	33-63	.524	11-24	.458	17-21	.810	11	31	42	42.2	6	26	7	5	11	94	75.3
vs Michigan	12/19/2021	68-74	Lot	24-63	.381	4-18	.222	16-20	.800	9	26	35	41.5	18	9	15	5	9	68	74.6
North Texas	12/29/2021	86-65	W	35-71	.493	9-25	.360	7-10	.700	13	33	46	41.9	21	22	13	2	8	86	75.6
at Kansas St.	01/02/2022	59-68	L	21-54	.389	6-20	.300	11-17	.647	10	17	27	40.8	22	11	22	3	10	59	74.3
at Oklahoma	01/12/2022	77-83	L	27-56	.482	4-11	.364	19-25	.760	12	27	39	40.6	16	12	18	2	7	77	74.5
at Kansas	01/16/2022	82-79	W	29-72	.403	14-29	.483	10-15	.667	17	20	37	40.4	15	24	10	4	6	82	75.0
Oklahoma St.	01/19/2022	67-49	W	23-52	.442	2-11	.182	19-25	.760	11	25	36	40.1	11	16	12	4	9	67	74.5
Iowa St.	01/23/2022	87-61	W	32-67	.478	12-21	.571	11-16	.688	14	29	43	40.3	18	26	11	7	7	87	75.2
at Texas Tech	01/26/2022	88-80	W	32-57	.561	6-12	.500	18-22	.818	12	17	29	39.7	15	10	11	1	4	88	75.9
at West Virginia	01/29/2022	87-54	W	35-61	.574	9-20	.450	8-12	.667	5	32	37	39.5	11	23	12	7	5	87	76.5
Oklahoma	02/02/2022	77-78	L	25-68	.368	7-27	.259	20-28	.714	14	21	35	39.3	20	17	15	4	8	77	76.6
Texas	02/04/2022	75-63	W	24-49	.490	6-18	.333	21-24	.875	7	23	30	38.9	20	19	19	2	11	75	76.5
at Texas	02/06/2022	63-55	W	21-53	.396	4-14	.286	17-19	.895	12	28	40	38.9	15	8	14	2	4	63	75.9
<b>Total</b>		<b>1669</b>		<b>597-1323</b>	<b>.451</b>	<b>150-431</b>	<b>.348</b>	<b>325-443</b>	<b>.734</b>	<b>258</b>	<b>598</b>	<b>856</b>	<b>38.9</b>	<b>323</b>	<b>366</b>	<b>301</b>	<b>83</b>	<b>152</b>	<b>1669</b>	<b>75.9</b>
Opponents		1342		478-1294	.369	130-416	.313	256-340	.753	234	502	736	33.5	447	253	356	51	147	1342	61.0

**Baylor Averages**

Games Played	Points/game	FG Pct	3FG Pct	FT Pct	Rebounds/game	Assists/game	Turnovers/game	Assist/Turnover ratio	Steals/game	Blocks/game
22	75.9	45.1	34.8	73.4	38.9	16.6	13.7	1.2	6.9	3.8



**2021-22 OPPONENT GAME-BY-GAME STATISTICS**

Opponent	Date	Score		Total		3-Pointers		Free throws		Rebounds										
				FG-FGA	PCT	3FG-3FGA	PCT	FT-FTA	PCT	OFF	DEF	TOT	AVG	PF	A	TO	BLK	STL	PTS	AVG
Texas St.	11/09/2021	77-70	W	27-71	.380	9-34	.265	7-8	.875	10	26	36	36.0	29	23	16	0	8	70	70.0
at UT Arlington	11/11/2021	81-54	W	19-60	.317	1-17	.059	15-21	.714	14	23	37	36.5	23	9	14	4	5	54	62.0
New Orleans	11/15/2021	78-39	W	13-40	.325	2-12	.167	11-14	.786	8	16	24	32.3	18	3	25	0	11	39	54.3
at Maryland	11/21/2021	76-79	L	28-70	.400	6-20	.300	17-18	.944	14	25	39	34.0	13	11	9	3	9	79	60.5
vs Fordham	11/25/2021	68-45	W	17-56	.304	6-22	.273	5-5	1.000	9	23	32	33.6	20	10	20	4	4	45	57.4
vs Arizona St.	11/26/2021	62-52	W	18-59	.305	3-19	.158	13-18	.722	15	26	41	34.8	23	8	16	6	5	52	56.5
vs Houston	11/27/2021	74-58	W	22-73	.301	10-23	.435	4-5	.800	12	23	35	34.9	19	8	12	6	7	58	56.7
Morehead St.	11/30/2021	73-28	W	11-55	.200	3-21	.143	3-4	.750	10	17	27	33.9	14	5	15	3	8	28	53.1
Missouri	12/04/2021	70-68	W	26-61	.426	8-24	.333	8-14	.571	9	29	38	34.3	27	13	15	0	2	68	54.8
Alcorn	12/08/2021	94-40	W	16-54	.296	6-20	.300	2-2	1.000	6	20	26	33.5	17	11	18	0	1	40	53.3
vs Michigan	12/19/2021	68-74	Lot	25-68	.368	4-14	.286	20-24	.833	18	32	50	35.0	19	9	16	3	8	74	55.2
North Texas	12/29/2021	86-65	W	23-61	.377	6-18	.333	13-21	.619	6	22	28	34.4	15	6	13	1	6	65	56.0
at Kansas St.	01/02/2022	59-68	L	23-45	.511	4-13	.308	18-24	.750	6	24	30	34.1	19	16	23	4	7	68	56.9
at Oklahoma	01/12/2022	77-83	L	28-61	.459	14-27	.519	13-18	.722	9	19	28	33.6	21	23	14	3	10	83	58.8
at Kansas	01/16/2022	82-79	W	28-56	.500	10-19	.526	13-16	.813	10	29	39	34.0	19	13	16	4	4	79	60.1
Oklahoma St.	01/19/2022	67-49	W	18-50	.360	4-17	.235	9-13	.692	8	23	31	33.8	23	7	17	1	6	49	59.4
Iowa St.	01/23/2022	87-61	W	18-55	.327	7-27	.259	18-20	.900	9	22	31	33.6	18	11	17	2	6	61	59.5
at Texas Tech	01/26/2022	88-80	W	28-53	.528	11-15	.733	13-18	.722	9	13	22	33.0	20	17	13	1	6	80	60.7
at West Virginia	01/29/2022	87-54	W	21-70	.300	3-13	.231	9-13	.692	10	20	30	32.8	17	15	15	2	7	54	60.3
Oklahoma	02/02/2022	77-78	L	28-64	.438	4-20	.200	18-21	.857	15	31	46	33.5	25	18	20	0	11	78	61.2
Texas	02/04/2022	75-63	W	22-59	.373	5-8	.625	14-21	.667	16	18	34	33.5	26	11	20	1	9	63	61.3
at Texas	02/06/2022	63-55	W	19-53	.358	4-13	.308	13-22	.591	11	21	32	33.5	22	6	12	3	7	55	61.0
<b>Total</b>		<b>1342</b>		<b>478-1294</b>	<b>.369</b>	<b>130-416</b>	<b>.313</b>	<b>256-340</b>	<b>.753</b>	<b>234</b>	<b>502</b>	<b>736</b>	<b>33.5</b>	<b>447</b>	<b>253</b>	<b>356</b>	<b>51</b>	<b>147</b>	<b>1342</b>	<b>61.0</b>
Baylor		1669		597-1323	.451	150-431	.348	325-443	.734	258	598	856	38.9	323	366	301	83	152	1669	75.9

**Opponents Averages**

Games Played	Points/game	FG Pct	3FG Pct	FT Pct	Rebounds/game	Assists/game	Turnovers/game	Assist/Turnover ratio	Steals/game	Blocks/game
22	61.0	36.9	31.3	75.3	33.5	11.5	16.2	0.7	6.7	2.3

## 2021-22 SUPERLATIVES

## Baylor - Game Highs

POINTS	94	Alcorn (12/08/2021)
	88	at Texas Tech (01/26/2022)
	87	at West Virginia (01/29/2022)
	87	Iowa St. (01/23/2022)
	86	North Texas (12/28/2021)
FIELD GOALS MADE	35	at West Virginia (01/29/2022)
	35	North Texas (12/28/2021)
FIELD GOAL ATTEMPTS	72	at Kansas (01/16/2022)
	72	at Maryland (11/21/2021)
FIELD GOAL PERCENTAGE	.574 (35-61)	at West Virginia (01/29/2022)
	.563 (32-57)	at Texas Tech (01/26/2022)
3 PT FG MADE	14	at Kansas (01/16/2022)
	13	Morehead St. (11/09/2021)
3 PT FG ATTEMPTS	29	at Kansas (01/16/2022)
	29	Morehead St. (11/09/2021)
3 PT FG PERCENTAGE	.571 (12-21)	Iowa St. (01/23/2022)
	.500 (6-12)	at Texas Tech (01/26/2022)
FREE THROWS MADE	24	vs Houston (N) (11/27/2021)
	21	Texas St. (11/09/2021)
FREE THROW ATTEMPTS	32	Missouri (12/04/2021)
	31	vs Houston (N) (11/27/2021)
FREE THROW PERCENTAGE	.824 (14-17)	at UT Arlington (11/11/2021)
	.818 (18-22)	at Texas Tech (01/26/2022)
REBOUNDS	50	vs Houston (N) (11/27/2021)
	48	Morehead St. (11/09/2021)
ASSISTS	29	Iowa St. (01/23/2022)
	26	Alcorn (12/08/2021)
STEALS	11	Alcorn (12/08/2021)
	10	at Kansas St. (01/02/2022)
BLOCKED SHOTS	7	at West Virginia (01/29/2022)
	7	Iowa St. (01/23/2022)
TURNOVERS	22	at Kansas St. (01/02/2022)
	18	at Oklahoma (01/12/2022)
FOULS	22	at Kansas St. (01/02/2022)
	21	North Texas (12/28/2021)

## Opponent - Game Highs

POINTS	83	at Oklahoma (01/12/2022)
	80	at Texas Tech (01/26/2022)
	79	at Kansas (01/16/2022)
	79	at Maryland (11/21/2021)
	78	Oklahoma (02/02/2022)
FIELD GOALS MADE	28	Oklahoma (02/02/2022)
	28	at Texas Tech (01/26/2022)
	28	at Kansas (01/16/2022)
	28	at Oklahoma (01/12/2022)
	28	at Maryland (11/21/2021)
FIELD GOAL ATTEMPTS	73	vs Houston (N) (11/27/2021)
	71	Texas St. (11/09/2021)
FIELD GOAL PERCENTAGE	.528 (28-53)	at Texas Tech (01/26/2022)
	.511 (23-45)	at Kansas St. (01/02/2022)
3 PT FG MADE	14	at Oklahoma (01/12/2022)
	11	at Texas Tech (01/26/2022)
3 PT FG ATTEMPTS	34	Texas St. (11/09/2021)
	27	Iowa St. (01/23/2022)
	27	at Oklahoma (01/12/2022)
3 PT FG PERCENTAGE	.733 (11-15)	at Texas Tech (01/26/2022)
	.526 (10-19)	at Kansas (01/16/2022)
FREE THROWS MADE	20	vs Michigan (N) (12/19/2021)
	18	Oklahoma (02/02/2022)
	18	Iowa St. (01/23/2022)
	18	at Kansas St. (01/02/2022)
FREE THROW ATTEMPTS	24	at Kansas St. (01/02/2022)
	24	vs Michigan (N) (12/19/2021)
FREE THROW PERCENTAGE	1.000 (5-5)	vs Fordham (N) (11/25/2021)
	1.000 (2-2)	Alcorn (12/08/2021)
REBOUNDS	50	vs Michigan (N) (12/19/2021)
	46	Oklahoma (02/02/2022)
ASSISTS	23	at Oklahoma (01/12/2022)
	23	Texas St. (11/09/2021)
STEALS	11	Oklahoma (02/02/2022)
	11	New Orleans (11/15/2021)
BLOCKED SHOTS	6	vs Houston (N) (11/27/2021)
	6	vs Arizona St. (N) (11/26/2021)
TURNOVERS	25	New Orleans (11/15/2021)
	23	at Kansas St. (01/02/2022)
FOULS	29	Texas St. (11/09/2021)
	27	Missouri (12/04/2021)

## Baylor - Game Lows

POINTS	59	at Kansas St. (01/02/2022)
	62	vs Arizona St. (N) (11/26/21)
	67	Oklahoma St. (01/19/2022)
	68	vs Michigan (N) (12/19/2021)
	68	vs Fordham (N) (11/25/2021)
FIELD GOALS MADE	21	at Kansas St. (01/02/2022)
	21	vs Arizona St. (N) (11/26/21)
FIELD GOAL ATTEMPTS	52	Oklahoma St. (01/19/2022)
	54	at Kansas St. (01/02/2022)
FIELD GOAL PERCENTAGE	.368 (25-68)	Oklahoma (02/02/2022)
	.368 (21-57)	vs Arizona St. (N) (11/26/21)
3 PT FG MADE	2	Oklahoma St. (01/19/2022)
	2	vs Arizona St. (N) (11/26/21)
3 PT FG ATTEMPTS	9	vs Arizona St. (N) (11/26/21)
	11	Oklahoma St. (01/19/2022)
	11	at Oklahoma (01/12/2022)
3 PT FG PERCENTAGE	.160 (4-25)	Texas St. (11/09/2021)
	.382 (2-11)	Oklahoma St. (01/19/2022)
FREE THROWS MADE	4	at Maryland (11/21/2021)
	7	North Texas (12/28/2021)
FREE THROW ATTEMPTS	5	at Maryland (11/21/2021)
	10	North Texas (12/28/2021)
FREE THROW PERCENTAGE	.563 (18-32)	Missouri (12/04/2021)
	.632 (12-19)	New Orleans (11/15/2021)
REBOUNDS	27	at Kansas St. (01/02/2022)
	29	at Texas Tech (01/26/2022)
ASSISTS	9	vs Michigan (N) (12/19/2021)
	10	at Texas Tech (01/26/2022)
STEALS	3	at Maryland (11/21/2021)
	4	at Texas Tech (01/26/2022)
	4	at UT Arlington (11/11/2021)
BLOCKED SHOTS	1	at Texas Tech (01/26/2022)
	1	vs Fordham (N) (11/25/2021)
TURNOVERS	7	Alcorn (12/08/2021)
	10	at Kansas (01/16/2022)
	10	Missouri (12/04/2021)
FOULS	6	Alcorn (12/08/2021)
	7	Morehead St. (11/09/2021)

## Opponent - Game Lows

POINTS	28	Morehead St. (11/09/2021)
	39	New Orleans (11/15/2021)
	40	Alcorn (12/08/2021)
	45	vs Fordham (N) (11/25/2021)
	49	Oklahoma St. (01/19/2022)
FIELD GOALS MADE	11	Morehead St. (11/09/2021)
	13	New Orleans (11/15/2021)
FIELD GOAL ATTEMPTS	40	New Orleans (11/15/2021)
	45	at Kansas St. (01/02/2022)
FIELD GOAL PERCENTAGE	.290 (11-38)	Morehead St. (11/09/2021)
	.296 (16-54)	Alcorn (12/08/2021)
3 PT FG MADE	1	at UT Arlington (11/11/2021)
	2	New Orleans (11/15/2021)
3 PT FG ATTEMPTS	12	New Orleans (11/15/2021)
	13	at West Virginia (01/29/2022)
	13	at Kansas St. (01/02/2022)
3 PT FG PERCENTAGE	.056 (1-17)	at UT Arlington (11/11/2021)
	.143 (2-14)	Morehead St. (11/09/2021)
FREE THROWS MADE	2	Alcorn (12/08/2021)
	3	Morehead St. (11/09/2021)
FREE THROW ATTEMPTS	3	Alcorn (12/08/2021)
	4	Morehead St. (11/09/2021)
FREE THROW PERCENTAGE	.571 (8-14)	Missouri (12/04/2021)
	.619 (13-21)	North Texas (12/28/2021)
REBOUNDS	22	at Texas Tech (01/26/2022)
	24	New Orleans (11/15/2021)
ASSISTS	3	New Orleans (11/15/2021)
	5	Morehead St. (11/09/2021)
STEALS	1	Alcorn (12/08/2021)
	2	Missouri (12/04/2021)
BLOCKED SHOTS	0	Oklahoma (02/02/2022)
	0	Alcorn (12/08/2021)
	0	Missouri (12/04/2021)
	0	New Orleans (11/15/2021)
	0	Texas St. (11/09/2021)
TURNOVERS	9	at Maryland (11/21/2021)
	12	vs Houston (N) (11/27/2021)
FOULS	13	at Maryland (11/21/2021)
	14	Morehead St. (11/09/2021)

## 2021-22 SUPERLATIVES

## Baylor - Individual Game Highs

POINTS	30		NaLyssa Smith at Oklahoma (01/12/2022)
	30		NaLyssa Smith at Maryland (11/21/2021)
	29		Jordan Lewis at Maryland (11/21/2021)
	28		NaLyssa Smith vs North Texas (12/29/2021)
	25		Sarah Andrews at Kansas (01/16/2022)
	25		NaLyssa Smith vs Alcorn (12/08/2021)
	25		NaLyssa Smith vs Missouri (12/04/2021)
FIELD GOALS MADE	14		NaLyssa Smith vs North Texas (12/29/2021)
	14		NaLyssa Smith at Maryland (11/21/2021)
FIELD GOAL ATTEMPTS	25		NaLyssa Smith at Maryland (11/21/2021)
	22		NaLyssa Smith at Kansas (01/16/2022)
FIELD GOAL PERCENTAGE (min 5 made)	.917	(11-12)	Queen Egbo vs New Orleans (11/15/2021)
	.909	(10-11)	Queen Egbo at West Virginia (01/29/2022)
3 PT FG MADE	7		Sarah Andrews at Kansas (01/16/2022)
	6		Jordan Lewis vs Iowa St. (01/23/2022)
	6		Ja'Mee Asberry at Kansas (01/16/2022)
	6		Ja'Mee Asberry vs Alcorn (12/08/2021)
	6		Sarah Andrews vs Morehead St. (11/30/2021)
3 PT FG ATTEMPTS	12		Ja'Mee Asberry vs Morehead St. (11/30/2021)
	11		Ja'Mee Asberry vs Oklahoma (02/02/2022)
	11		Ja'Mee Asberry at Kansas (01/16/2022)
	11		Ja'Mee Asberry at UT Arlington (11/11/2021)
3 PT FG PERCENTAGE (min 2 made)	1.000	(2-2)	Jordan Lewis at West Virginia (01/29/2022)
	1.000	(2-2)	Ja'Mee Asberry at Oklahoma (01/12/2022)
	1.000	(2-2)	Kamaria McDaniel vs Morehead St. (11/30/2021)
	1.000	(2-2)	Sarah Andrews vs Fordham (N) (11/25/2021)
FREE THROWS MADE	11		Jordan Lewis vs Michigan (N) (12/19/2021)
	9		Queen Egbo vs Oklahoma St. (01/19/2022)
	9		Caitlin Bickle vs Alcorn (12/08/2021)
	9		Jordan Lewis vs Arizona St. (N) (11/26/2021)
FREE THROW ATTEMPTS	13		NaLyssa Smith vs Houston (N) (11/27/2021)
	12		Jordan Lewis vs Arizona St. (N) (11/26/2021)
FREE THROW PERCENTAGE (min 3 made)	1.000	(11-11)	Jordan Lewis vs Michigan (N) (12/19/2021)
	1.000	(9-9)	Queen Egbo vs Oklahoma St. (01/19/2022)
	1.000	(7-7)	NaLyssa Smith vs New Orleans (11/15/2021)
	1.000	(5-5)	NaLyssa Smith at UT Arlington (11/11/2021)
	1.000	(4-4)	Caitlin Bickle at Texas Tech (01/26/2022)
	1.000	(4-4)	NaLyssa Smith vs Morehead St. (11/30/2021)
	1.000	(4-4)	Ja'Mee Asberry vs Houston (N) (11/27/2021)
	1.000	(4-4)	Queen Egbo vs Texas St. (11/09/2021)
	1.000	(3-3)	Jordan Lewis vs Oklahoma (02/02/2022)
	1.000	(3-3)	NaLyssa Smith vs Iowa St. (01/23/2022)
	1.000	(3-3)	Caitlin Bickle vs Morehead St. (11/30/2021)
	1.000	(3-3)	Caitlin Bickle at UT Arlington (11/11/2021)
REBOUNDS	21		Queen Egbo vs Iowa St. (01/23/2022)
	19		NaLyssa Smith vs Houston (N) (11/27/2021)
ASSISTS	11		Jordan Lewis at West Virginia (01/29/2022)
	9		Sarah Andrews vs Houston (N) (11/27/2021)
STEALS	5		Jordan Lewis at Kansas St. (01/02/2022)
	4		Ja'Mee Asberry vs Oklahoma St. (01/19/2022)
	4		Jordan Lewis vs Michigan (N) (12/19/2021)

## 2021-22 BOX SCORES



Official Basketball Box Score - Final  
**Texas St. at Baylor**  
11/09/21 Ferrell Center, Waco  
2021-22 Women's Basketball

Game Time: 7:00 PM  
Game Duration: 2:00  
Attendance: 4,180

Officials: Roy Gubeyan, Chaney Muench, Bill Larence

Texas St. - 70		Record: 0-1										Shooting By Period											
NO. Name	Min	FG M-A	3P M-A	FT M-A	Rebounds OR DR TOT	Fouls PF FD	TP	AS	TO	ST	Blocks BS BA	+/-	1st FG%	2nd FG%	3rd FG%	4th FG%	GM FG%	3PT%	FT%	GM FG%	3PT%	FT%	
20 Chelsea Johnson	F 08:01	0-0	0-0	0-0	0 1 1	3 0	0	0	1	0	0	0	-10	1st FG% 3-12 25.0%	3PT% 0-7 0.0%	FT% 1-2 50%	2nd FG% 6-20 30.0%	3PT% 3-11 27.3%	FT% 2-2 100%	3rd FG% 10-18 55.6%	4th FG% 8-21 38.1%	3PT% 3-11 27.3%	FT% 4-4 100%
32 Da'Nasia Hood	F 29:23	8-21	4-10	0-0	0 6 6	4 1	20	2	2	4	0	-1	3PT% 0-7 0.0%	FT% 1-2 50%	2nd FG% 6-20 30.0%	3PT% 3-11 27.3%	FT% 2-2 100%	3rd FG% 10-18 55.6%	4th FG% 8-21 38.1%	3PT% 3-11 27.3%	FT% 4-4 100%		
3 Kennedy Taylor	G 36:02	2-12	1-7	2-2	2 0 2	5 2	7	9	5	0	0	-3	3PT% 0-7 0.0%	FT% 1-2 50%	2nd FG% 6-20 30.0%	3PT% 3-11 27.3%	FT% 2-2 100%	3rd FG% 10-18 55.6%	4th FG% 8-21 38.1%	3PT% 3-11 27.3%	FT% 4-4 100%		
5 Jo'Nah Johnson	G 33:31	4-13	3-10	0-0	0 2 2	1 1	11	5	3	1	0	0	3PT% 0-7 0.0%	FT% 1-2 50%	2nd FG% 6-20 30.0%	3PT% 3-11 27.3%	FT% 2-2 100%	3rd FG% 10-18 55.6%	4th FG% 8-21 38.1%	3PT% 3-11 27.3%	FT% 4-4 100%		
15 Ja'Kayla Bowie	G 27:22	3-7	0-3	0-0	0 1 7	8 5	1	6	3	2	0	-16	3PT% 0-7 0.0%	FT% 1-2 50%	2nd FG% 6-20 30.0%	3PT% 3-11 27.3%	FT% 2-2 100%	3rd FG% 10-18 55.6%	4th FG% 8-21 38.1%	3PT% 3-11 27.3%	FT% 4-4 100%		
55 Jaeda Reed	15:48	5-7	0-0	0-0	0 5 5	3 1	10	1	0	2	0	0	3PT% 0-7 0.0%	FT% 1-2 50%	2nd FG% 6-20 30.0%	3PT% 3-11 27.3%	FT% 2-2 100%	3rd FG% 10-18 55.6%	4th FG% 8-21 38.1%	3PT% 3-11 27.3%	FT% 4-4 100%		
4 Sierra Dickson	22:34	1-3	0-0	3-4	1 3 4	3 5	5	3	0	0	0	-2	3PT% 0-7 0.0%	FT% 1-2 50%	2nd FG% 6-20 30.0%	3PT% 3-11 27.3%	FT% 2-2 100%	3rd FG% 10-18 55.6%	4th FG% 8-21 38.1%	3PT% 3-11 27.3%	FT% 4-4 100%		
33 Gabby Standler	09:14	1-4	1-4	0-0	0 0 0	2 0	3	0	0	1	0	-9	3PT% 0-7 0.0%	FT% 1-2 50%	2nd FG% 6-20 30.0%	3PT% 3-11 27.3%	FT% 2-2 100%	3rd FG% 10-18 55.6%	4th FG% 8-21 38.1%	3PT% 3-11 27.3%	FT% 4-4 100%		
25 Lauryn Thompson	15:15	3-4	0-0	2-2	1 2 3	2 1	8	0	2	0	0	4	3PT% 0-7 0.0%	FT% 1-2 50%	2nd FG% 6-20 30.0%	3PT% 3-11 27.3%	FT% 2-2 100%	3rd FG% 10-18 55.6%	4th FG% 8-21 38.1%	3PT% 3-11 27.3%	FT% 4-4 100%		
40 Nicole Leff	02:50	0-0	0-0	0-0	1 0 1	1 0	0	0	1	0	0	-2	3PT% 0-7 0.0%	FT% 1-2 50%	2nd FG% 6-20 30.0%	3PT% 3-11 27.3%	FT% 2-2 100%	3rd FG% 10-18 55.6%	4th FG% 8-21 38.1%	3PT% 3-11 27.3%	FT% 4-4 100%		
Team					4 0 4		0	0					3PT% 3-11 27.3%	FT% 4-4 100%	GM FG% 27-71 38.0%	3PT% 9-34 26.5%	FT% 7-8 87.5%	Technical Fouls:NONE	Dead Ball Rebounds: 1.1				
Totals		27-71	9-34	7-8	10 26 36	29 12	70	23	16	8	0	-7	3PT% 9-34 26.5%	FT% 7-8 87.5%	GM FG% 27-71 38.0%	3PT% 9-34 26.5%	FT% 7-8 87.5%	Technical Fouls:NONE	Dead Ball Rebounds: 1.1				

Baylor - 77		Record: 1-0																			
		Min	FG M-A	3P M-A	FT M-A	Rebounds OR DR TOT	Fouls PF FD	TP	AS	TO	ST	Blocks BS BA	+/-	Shooting By Period							
NO.	Name													1st	2nd	3rd	4th				
1	NaLyssa Smith	F 34:20	8-17	0-2	7-9	3 4 7	3 9	23	0	5	1	2	0	1st FG% 8-21 38.1%	3PT% 3-12 25.0%	FT% 3-4 75%	GM FG% 26-62 41.9%				
4	Queen Egbo	C 27:57	6-8	0-0	4-4	6 5 11	2 4	16	0	4	1	2	0	3PT% 3-12 25.0%	FT% 3-4 75%	GM FG% 26-62 41.9%	3PT% 3-12 25.0%				
3	Jordan Lewis	G 32:12	4-9	1-4	5-9	0 3 3	4 8	14	7	1	1	0	10	2nd FG% 6-14 42.9%	3PT% 1-5 20.0%	FT% 3-4 75%	GM FG% 26-62 41.9%				
21	Ja'Mee Asberry	G 29:59	1-7	1-6	0-0	0 5 5	1 1	3	2	2	0	0	10	3PT% 1-5 20.0%	FT% 3-4 75%	GM FG% 26-62 41.9%	3PT% 1-5 20.0%				
24	Sarah Andrews	G 30:14	2-11	0-6	4-6	2 6 8	0 4	8	2	2	2	0	1	3PT% 3-12 25.0%	FT% 3-4 75%	GM FG% 26-62 41.9%	3PT% 3-12 25.0%				
10	Jaden Owens		27:35	3-6	2-5	0 0 5	1 0	8	2	1	1	0	0	3rd FG% 7-13 53.8%	3PT% 0-3 0.0%	FT% 3-4 75%	GM FG% 26-62 41.9%				
51	Caitlin Bickle		17:43	2-4	0-2	1-2	0 0 0	2 3 5	1	0	0	0	6	3PT% 0-3 0.0%	FT% 3-4 75%	GM FG% 26-62 41.9%	3PT% 0-3 0.0%				
Team						0 5 5		0	1					3rd FG% 7-13 53.8%	3PT% 0-3 0.0%	FT% 3-4 75%	GM FG% 26-62 41.9%				
Totals			26-62	4-25	21-30	11 33 44	13 29	77	14	16	6	4	0	7	4th FG% 5-14 35.7%	3PT% 0-5 0.0%	FT% 3-4 75%	GM FG% 26-62 41.9%			
Technical Fouls:Smith 4 <sup>th</sup> 7:36																					
																		Dead Ball Rebounds: 70			

TXST		BAY		Points from Turnovers		TXST		BAY		Period by Period Scoring				
Biggest lead	0 (1 <sup>st</sup> 10:00)	20 (3 <sup>rd</sup> 8:25)		12	22	1st	2nd	3rd	4th	TOT				
Best Scoring Run	7 (4 <sup>th</sup> 2:42)	6 (2 <sup>nd</sup> 9:29)		30	42	TXST	7	17	23	23	70			
Lead Changes	0			12	9	BAY	22	16	24	15	77			
Times Tied	0			15	13									
Time with Lead	00:00	38:37		26	13									



Official Basketball Box Score - Final  
**Baylor at UT Arlington**  
11/11/21 College Park Center, Arlington, Texas  
2021-22 Women's Basketball

Game Time: 6:00 PM  
Game Duration: 1:57  
Attendance: 2,182

Officials: Brian Hall, Chaney Muench, Stephanie Barksdale

Baylor - 81		Record: 2-0										Shooting By Period											
NO.	Name	Min	FG		3P	FT	Rebounds		Fouls		TP	AS	TO	ST	Blocks		+/-	Shooting By Period					
			M	A			M	A	OR	DR					OT	PF		FD	BS	BA	1st	2nd	3rd
1	NaLyssa Smith	F 29:00	8	9	0	5	5	11	16	3	6	21	1	5	2	2	0	29	1st FG%	9-19	47.4%		
4	Queen Egbo	C 19:03	3	5	0	0	1	3	4	2	1	6	1	2	1	2	0	8	3PT%	0-0	0.0%		
3	Jordan Lewis	G 31:02	4	9	3	7	1	2	0	2	2	12	4	1	0	0	0	24	FT%	2-2	100%		
21	Ja'Mee Asberry	G 27:02	6	15	5	11	0	0	1	0	1	4	17	2	1	0	0	26	2nd FG%	5-13	38.5%		
24	Sarah Andrews	G 30:58	5	15	1	5	4	5	1	6	2	3	15	3	0	1	0	1	3PT%	1-5	20.0%		
51	Caitlin Bickle	28:36	2	4	0	3	3	5	8	1	6	7	3	2	0	2	1	18	FT%	3-5	60%		
10	Jaden Owens	24:01	1	4	0	2	1	2	0	2	2	3	1	2	1	0	1	9	3rd FG%	6-13	46.2%		
22	Kamaria McDaniel	04:20	0	1	0	0	0	1	1	0	0	0	0	0	0	0	0	-1	3PT%	2-3	66.7%		
25	Kendra Gillispie	03:21	0	1	0	0	0	1	1	2	0	0	0	0	0	0	0	-1	FT%	6-7	85.7%		
11	Andrea Katramados	02:37	0	0	0	0	0	0	0	0	0	0	0	0	0	0	0	-3	4th FG%	1-8	50.0%		
Team							1	0	1		0	1							3PT%	2-5	40.0%		
Totals			29	63	9	25	14	17	12	30	42	16	23	81	16	13	4	6	4	27	GM FG%	29-63	46.0%
																		Technical Fouls:NONE					
																		Dead Ball Rebounds: 2.0					
UT Arlington - 54		Record: 0-1										Shooting By Period											
NO.	Name	Min	FG		3P	FT	Rebounds		Fouls		TP	AS	TO	ST	Blocks		+/-	Shooting By Period					
			M	A			M	A	OR	DR					OT	PF		FD	BS	BA	1st	2nd	3rd

UT Arlington - 54		Record: 0-1										Shooting By Period										
NO. Name	Min	FG M-A	3P M-A	FT M-A	Rebounds OR DR TOT	Fouls PF FD	TP	AS	TO	ST	Blocks BS BA +/-	1st FG%	2nd FG%	3rd FG%	4th FG%	GM FG%	3PT%	FT%	GM FG%	3PT%	FT%	
4 Starr Jacobs	F 21:50	6-9	0-1	2-3	1 3 4	2 3	14	1	2	0	1	2	1	2	-7	37.5%	0-2	0.0%	2-3	66.7%	7-17	41.2%
34 Shyia Smith	F 23:01	1-3	0-1	1-4	1 2 3	4 2	3	0	2	0	0	0	0	0	-9	33.3%	0-2	0.0%	2-3	66.7%	7-17	41.2%
20 Claire Chastain	F 24:17	2-6	1-2	0-0	0 1 1	3 0	5	0	0	0	1	0	0	0	-21	33.3%	0-2	0.0%	2-3	66.7%	7-17	41.2%
21 Terryn Milton	G 32:00	2-11	0-1	4-4	3 5 8	3 2	8	5	2	1	0	1	0	1	-28	18.2%	0-1	0.0%	1-1	100%	15-20	75.0%
24 De'Sha Benjamin	G 32:42	3-11	0-4	2-2	0 2 2	4 2	8	1	4	0	0	0	2	2	-24	27.3%	0-4	0.0%	2-2	100%	15-20	75.0%
41 Katie Ferrell	23:42	0-3	0-2	0-0	1 4 5	3 2	0	1	2	3	1	0	1	0	-10	0.0%	0-2	0.0%	1-0	100%	4-13	30.8%
45 Emma Halverson	23:39	2-6	0-0	2-4	1 1 2	0 2	6	1	0	0	0	1	0	1	-24	33.3%	0-7	0.0%	0-0	0.0%	11-24	45.8%
23 Camryn Hawkins	14:36	2-7	0-5	0-0	4 1 5	1 1	4	0	0	1	0	0	1	0	-10	28.6%	0-5	0.0%	0-0	0.0%	11-24	45.8%
32 Jordyn Turner	04:16	0-1	0-0	4-4	1 3 4	1 2	4	0	1	0	0	0	0	0	-2	0.0%	0-3	0.0%	0-0	0.0%	11-24	45.8%
1 Olympia Chaney	05:36	1-2	0-0	0-0	1 0 1	1 0	2	0	0	0	0	0	0	0	-1	50.0%	0-1	0.0%	0-0	0.0%	11-24	45.8%
2 Reniya Jones	03:21	0-1	0-1	0-0	0 0 0	1 0	0	0	0	0	0	0	0	0	0	0.0%	0-1	0.0%	0-0	0.0%	11-24	45.8%
Team					1 2	1																
Totals		19-60	1-17	15-21	14 23 37	23 16	54	9	14	5	4	6	27									
												Technical Fouls:NONE										
												Shooting By Period										
												1st FG% 6-16 37.5%										
												3PT% 0-2 0.0%										
												FT% 3-4 75%										
												2nd FG% 7-17 41.2%										
												3PT% 1-5 20.0%										
												FT% 2-3 66.7%										
												3rd FG% 4-13 30.8%										
												4th FG% 2-3 15.4%										
												3PT% 0-1 0.0%										
												FT% 9-12 75%										
												GM FG% 19-60 31.7%										
												3PT% 1-17 5.9%										
												FT% 15-21 71.4%										
												3rd FG% 7-13 53.8%										



## 2021-22 BOX SCORES



Official Basketball Box Score - Final

## Fordham at Baylor

11/25/21 Hard Rock Hotel Cancun, MX  
2021-22 Women's Basketball

Game Time: 11:00 AM

Game Duration: 1:40

Attendance: 103

Officials: Nick Marshall, Erika Herriman, Adrienne Gilmore

Fordham - 45

Record: 3-2

NO.	Name	Min	FG	3P	FT	Rebounds	Fouls	TP	AS	TO	ST	Blocks	+/-
			M-A	M-A	M-A	OR DR TOT	PF FD					BS BA	
24	Kaitlyn Downey	F 34:10	2-7	0-5	0-0	1 0 1	3 3	4	3	1	1	3	0 -28
43	Megan Jonassen	F 25:35	2-5	0-0	2-2	2 2 4	3 2	6	0	2	0	1	0 -16
2	Anna DeWolfe	G 36:25	4-15	2-7	0-0	0 7 7	1 0	10	3	8	2	0	0 -24
21	Asiah Dingle	G 30:18	2-10	0-1	0-0	1 2 3	5 3	4	1	4	0	0	0 -25
20	Kendell Heremaia	G 24:37	4-8	3-6	3-3	0 6 6	0 1	2	14	0	2	0	0 -15
30	Maranda Nyborg	09:12	0-2	0-0	0-0	0 0 0	1 0	0	0	1	0	0	1 6
13	Sarah Karpell	12:35	0-0	0-0	0-0	1 1 2	2 0	0	0	1	1	0	0 -6
14	Vilisi Tavui	01:44	0-0	0-0	0-0	0 1 1	0 0	0	0	0	0	0	0 1
10	Millie Prior	06:44	0-1	0-0	0-0	2 0 2	2 0	0	2	0	0	0	0 -2
1	Matilda Flood	13:52	2-7	0-0	0-0	0 3 3	1 2	4	0	0	0	0	0 0
5	Catherine Polisano	02:24	1-1	1-1	0-0	0 0 0	1 0	3	0	0	0	0	0 0
12	Edona Thaqi	02:24	0-0	0-0	0-0	2 0 2	0 1	1	0	1	0	0	0 0
Team						0 1 1				0	1		
Totals			17-56	6-22	5-5	9 23 32	20 13	45	10	20	4	4	1 -23

Technical Fouls: NONE

Dead Ball Rebounds: 1, 0

Baylor - 68

Record: 4-1

NO.	Name	Min	FG	3P	FT	Rebounds	Fouls	TP	AS	TO	ST	Blocks	+/-
			M-A	M-A	M-A	OR DR TOT	PF FD					BS BA	
1	Nalysa Smith	F 32:44	8-16	0-1	3-5	5 10 15	3 5	19	1	6	1	0	1 23
4	Queen Egbo	C 24:06	0-9	0-0	2-2	1 7 8	1 2	2	1	2	1	0	2 12
3	Jordan Lewis	G 32:30	6-9	1-3	2-4	1 2 3	2 7	15	6	1	2	0	0 23
21	Ja'Mee Asberry	G 29:24	4-6	2-4	0-0	0 1 1	1 1	10	1	1	0	0	0 24
24	Sarah Andrews	G 31:36	4-8	2-2	0-0	0 1 1	1 1	10	2	0	3	0	1 23
22	Kamaria McDaniel	13:48	0-1	0-1	1-2	1 2 3	1 1	1	1	1	0	0	0 0
51	Caillin Bickle	19:49	3-7	1-3	1-1	5 6	1 1	8	0	4	0	0	0 7
10	Jaden Owens	10:39	0-1	0-1	2-2	0 0 0	2 1	1	0	1	0	0	0 0
25	Kendra Gillispie	03:21	0-1	0-0	1-2	0 0 1	1 2	0	1	0	1	0	0 4
11	Andrea Katramados	02:01	0-0	0-0	0-0	0 0 0	0 0	0	0	0	0	0	0 -1
Team						2 1 3				0	0		
Totals			25-58	6-15	12-18	12 29 41	13 20	68	12	17	7	1	4 23

Technical Fouls: NONE

Dead Ball Rebounds: 4, 0

	FOR	BAY
Biggest lead	6 (2 <sup>nd</sup> 0:51)	26 (4 <sup>th</sup> 2:01)
Best Scoring Run	7 (2 <sup>nd</sup> 0:51)	14 (4 <sup>th</sup> 2:01)
Lead Changes	6	
Times Tied	1	
Time with Lead	07:36	31:10

Points from	FOR	BAY
Turnovers	10	12
Paint	14	24
Second Chance	10	14
Fast Breaks	4	12
Bench	7	12

Period by Period Scoring
1st 2nd 3rd 4th TOT
FOR 11 13 10 11 45
BAY 14 6 24 24 68



Official Basketball Box Score - Final

## Baylor at Houston

11/27/21 Ferrell Center, Waco  
2021-22 Women's Basketball

Game Time: 1:30 PM

Game Duration: 1:36

Attendance: 129

Officials: Nick Marshall, Amy Komenko, Erika Herriman

Baylor - 74

Record: 5-1

NO.	Name	Min	FG	3P	FT	Rebounds	Fouls	TP	AS	TO	ST	Blocks	+/-
			M-A	M-A	M-A	OR DR TOT	PF FD					BS BA	
1	Nalysa Smith	F 27:36	6-14	1-1	8-13	6 13 19	1 7	21	1	0	0	2	2 5
4	Queen Egbo	C 24:39	6-12	0-0	4-6	2 6 8	4 4	16	1	2	0	3	3 14
3	Jordan Lewis	G 27:51	2-6	1-3	2-2	0 2 2	1 1	7	4	1	3	0	1 17
21	Ja'Mee Asberry	G 36:35	3-10	2-7	4-4	2 2 4	1 3	12	0	3	3	0	0 21
24	Sarah Andrews	G 28:09	2-7	1-1	2-2	0 3 3	0 1	7	9	1	1	0	0 13
10	Jaden Owens	14:03	0-3	0-2	2-2	0 1 1	2 1	2	0	2	1	0	0 -2
51	Caillin Bickle	20:19	3-4	1-1	2-2	1 5 6	1 1	9	1	1	0	0	0 23
22	Kamaria McDaniel	11:54	0-1	0-0	0-0	0 1 1	0 1	0	0	1	0	0	0 -3
25	Kendra Gillispie	07:26	0-1	0-0	0-0	0 1 1	0 0	0	0	0	0	0	0 -10
40	Andrea Katramados	01:37	0-0	0-0	0-0	0 0 0	0 0	0	0	0	0	1	0 -4
Team						3 2 5				0	1		
Totals			22-58	6-15	24-31	14 36 50	10 19	74	16	12	8	6	6 16

Technical Fouls: NONE

Dead Ball Rebounds: 5, 2

Houston - 58

Record: 3-4

NO.	Name	Min	FG	3P	FT	Rebounds	Fouls	TP	AS	TO	ST	Blocks	+/-
			M-A	M-A	M-A	OR DR TOT	PF FD					BS BA	
1	Bria Patterson	F 31:08	4-15	1-4	1-1	1 3 4	4 0	1	1	0	0	0	0 -10
30	Tatyana Hill	F 12:56	0-3	0-0	0-0	0 2 2	1 1	2	0	1	1	0	1 -3
5	Dymond Gladney	G 19:20	1-1	0-0	0-0	0 2 2	1 1	2	0	1	3	2	1 -11
10	Britney Onyiah	G 28:28	2-11	2-7	0-0	0 1 1	1 1	6	0	1	3	2	1 -4
14	Laila Blair	G 33:06	10-21	6-10	2-2	0 3 3	2 3	23	1	4	1	0	0 -2
23	Julia Blackshell-Fair	15:17	0-0	0-0	0-0	0 1 1	1 0	0	1	0	0	0	0 -18
2	Tiara Young	15:33	3-9	1-2	0-0	1 0 1	2 0	7	0	1	1	0	0 20
45	Fatou Diagne	23:48	2-8	0-0	0-0	5 7 12	2 2	4	0	1	1	4	3 -19
34	Kamryn Jones	08:52	0-3	0-0	0-0	1 0 1	1 1	0	1	1	0	0	1 -6
0	Eryka Sidney	08:16	0-0	0-0	1-2	0 0 0	1 0	1	3	1	0	0	0 7
44	Jazmaine Lewis	03:16	0-2	0-0	0-0	0 1 1	0 1	0	0	0	0	0	0 0
Team						3 2 5				0	0		
Totals			22-73	10-23	4-5	12 23 35	19 10	58	8	12	7	6	6 -16

Technical Fouls: NONE

Dead Ball Rebounds: 2, 1

	Bears	Coogs
Biggest lead	28 (4 <sup>th</sup> 6:27)	8 (1 <sup>st</sup> 7:01)
Best Scoring Run	19 (3 <sup>rd</sup> 5:13)	9 (4 <sup>th</sup> 4:47)
Lead Changes	1	
Times Tied	4	
Time with Lead	23:24	14:30

Points from	Bears	Coogs
Turnovers	14	16
Paint	26	22
Second Chance	16	10
Fast Breaks	12	9
Bench	11	12

Period by Period Scoring
1st 2nd 3rd 4th TOT
Bears 14 20 17 23 74
Coogs 17 10 5 26 58



Official Basketball Box Score - Final

## Morehead St. at Baylor

11/30/21 Ferrell Center, Waco  
2021-22 Women's Basketball

Game Time: 7:00 PM

Game Duration: 1:47

Attendance: 3,939

Officials: Dee Kantrre, Cameron Kouze, Scott Varbrough

Morehead St. - 28

Record: 1-5

NO.	Name	Min	FG	3P	FT	Rebounds	Fouls	TP	AS	TO	ST	Blocks	+/-
			M-A	M-A	M-A	OR DR TOT	PF FD					BS BA	
2	Jada Claude	F 36:14	3-15	2-6	0-0	2 4 6	3 0	8	0	4	0	0	0 -39
23	Aiden Rainford	F 22:37	0-2	0-0	0-0	2 2 4	3 4	0	0	2	0	2	1 -30
35	Julian McDonald	F 32:30	3-10	0-2	0-0	2 3 5	3 0	6	2	5	3	0	2 -35
30	Terri Smith	G 37:14	2-15	1-8	0-0	1 2 3	0 0	5	2	2	0	0	0 -41
42	Tyler Moore	G 27:22	1-5	0-4	0-0	0 3 3	0 0	2	0	3	2	1	0 -34
4	Morgan Browning	20:44	0-5	0-0	1-2	0 2 2	1 2	1	1	0	0	0	1 -28
24	Jarany Ross	12:18	2-2	0-0	2-2	0 2 4	1 1	6	0	1	1	0	0 -9
0	Jazmyn Gaines-Burns	07:20	0-0	0-0	0-0	0 0 0	0 0	0	0	0	0	0	0 -4
10	Freddy Adams	03:41	0-1	0-1	0-0	0 0 0	0 0	0	0	0	0	0	0 -5
Team						1 1 2				0	0		
Totals			11-55	3-21	3-4	10 17 27	14 7	28	5	15	8	3	4 -45

Technical Fouls: NONE

Dead Ball Rebounds: 0, 1

Baylor - 73

Record: 7-1

NO.	Name	Min	FG	3P	FT	Rebounds	Fouls	TP	AS	TO	ST	Blocks	+/-
			M-A	M-A	M-A	OR DR TOT	PF FD					BS BA	
1	Nalysa Smith	F 26:38	3-7	0-1	4-4	2 9 11	2 4	10	0	4	1	1	1 25
4	Queen Egbo	C 29:17	5-7	0-0	1-2	3 13 16	1 6	11	0	0	1	1	0 45
3	Jordan Lewis	G 20:47	1-4	1-4	0-2	0 1 1	1 2	3	4	3	0	0	0 22
21	Ja'Mee Asberry	G 37:48	5-13	4-12	0-0	0 1 1	0 0	14	4	2	2	0	0 46
24	Sarah Andrews	G 36:25	7-12	6-8	0-0	1 3 4	1 0	20	4	1	2	0	0 41
51	Caillin Bickle	18:32	3-6	0-2	3-3	4 2 6	1 2	9	1	0	0	0	0 21
22	Kamaria McDaniel	25:00	2-4	2-2	0-0	0 5 5	1 0	6	4	2	0	2	0 26
25	Kendra Gillispie	05:33	0-2	0-0	0-0	1 0 1	0 0	0	0	1	0	0	2 -1
Team						2 1 3				0	0		
Totals			26-55	13-29	8-11	13 35 48	7 14	73	21	13	6	4	3 45

Technical

## 2021-22 BOX SCORES



Official Basketball Box Score - Final  
**Missouri at Baylor**  
 12/04/21 Ferrell Center, Waco  
 2021-22 Women's Basketball

Game Time: 7:00 PM  
 Game Duration: 2:17  
 Attendance: 4,160

Officials: Brian Hal, Julie Krommerhoek, Brian Garland

Missouri - 68

Record: 8-1

NO.	Name	Min	FG	3P	FT	Rebounds	Fouls	TP	AS	TO	ST	Blocks	+/-
			M-A	M-A	M-A	OR DR TOT	PF FD					BS BA	
43	Hayley Frank	F 34:54	3-8	2-4	0-0	2 0 2	4 1	8	4	1	0	0	-2
1	Lauren Hansen	G 25:06	4-11	2-6	0-1	0 2 2	2 1	10	0	3	1	0	-1
4	Mama Dembele	G 10:19	0-2	0-1	0-0	1 2 3	5 0	0	1	2	0	0	1
13	Haley Troup	G 37:25	6-14	2-5	2-2	0 0 0	3 4	16	6	2	0	0	-6
33	Aijha Blackwell	G 28:08	8-14	1-5	3-8	1 15 16	5 5	20	1	3	1	0	-6
30	Izzy Higginbottom	24:45	2-4	1-2	3-3	2 0 2	4 3	8	1	1	0	0	1
00	LaDazhia Williams	18:15	3-5	0-0	0-0	1 4 5	2 0	6	0	2	0	0	3
2	Sara-Rose Smith	17:37	0-2	0-1	0-0	0 4 4	2 0	0	0	1	0	0	0
32	Jayla Kelly	01:35	0-1	0-0	0-0	0 0 0	1 0	0	0	0	0	0	0
25	Skylah Travis	01:15	0-0	0-0	0-0	0 1 1	0 0	0	0	0	0	0	0
24	Kiya Dorroh	00:41	0-0	0-0	0-0	0 0 0	0 0	0	0	0	0	0	0
Team						2 1 3		0	0				
Totals			26-61	8-24	8-14	9 29 38	27 15	68	13	15	2	0	-2

Technical Fouls: NONE

Shooting By Period	1st	2nd	3rd	4th	OT
FG%	51.3	38.5%			
3PT%	2-7	28.6%			
FT%	0-1	0%			
2nd FG%	7-17	41.2%			
3PT%	1-5	20.0%			
FT%	0-0	0%			
4th FG%	8-15	53.3%			
3PT%	1-4	25.0%			
FT%	8-9	88.9%			
4th FG%	6-16	37.5%			
3PT%	4-8	50.0%			
FT%	0-4	0%			
GM FG%	26-61	42.6%			
3PT%	8-24	33.3%			
FT%	8-14	57.1%			

Dead Ball Rebounds: 2, 1

Baylor - 70

Record: 8-1

NO.	Name	Min	FG	3P	FT	Rebounds	Fouls	TP	AS	TO	ST	Blocks	+/-
			M-A	M-A	M-A	OR DR TOT	PF FD					BS BA	
1	Nalyssa Smith	F 38:15	9-13	0-0	7-10	4 13 17	2 8	25	3	2	1	0	2
4	Queen Egbo	C 16:57	1-7	0-0	0-0	0 6 6	3 1	2	0	3	0	1	0
3	Jordan Lewis	G 38:15	2-10	0-3	5-8	1 1 2	2 7	9	7	0	1	1	0
21	Ja'Mee Asberry	G 37:01	3-8	2-5	1-2	0 1 1	3 2	9	1	3	2	0	9
24	Sarah Andrews	G 30:11	4-9	1-5	1-4	0 3 3	3 10	1	1	0	0	0	-1
51	Caitlin Bickle	24:48	4-7	0-2	0-0	2 2 2	4 11	3	0	1	0	0	2
22	Kamaria McDaniel	13:54	1-2	1-1	1-4	1 0 1	0 2	4	2	1	0	0	-4
10	Jaden Owens	00:39	0-0	0-0	0-0	0 0 0	0 0	0	0	0	0	0	0
Team						0 3 3		0	0				
Totals			24-56	4-16	16-32	6 29 35	15 27	70	17	10	5	2	0

Technical Fouls: NONE

Shooting By Period	1st	2nd	3rd	4th	OT
FG%	51.6	31.3%			
3PT%	0-3	0.0%			
FT%	3-6	50%			
2nd FG%	10-15	66.7%			
3PT%	3-4	75.0%			
FT%	0-1	0%			
4th FG%	6-12	50.0%			
3PT%	0-3	0.0%			
FT%	8-12	66.7%			
4th FG%	3-13	23.1%			
3PT%	1-6	16.7%			
FT%	7-13	53.8%			
GM FG%	24-56	42.9%			
3PT%	4-16	25.0%			
FT%	16-32	56.3%			

Dead Ball Rebounds: 10, 1

	MSU	BAY
Biggest lead	3 (4 <sup>th</sup> 7:11)	11 (3 <sup>rd</sup> 9:19)
Best Scoring Run	8 (4 <sup>th</sup> 0:34)	12 (4 <sup>th</sup> 3:00)
Lead Changes	2	
Times Tied	5	
Time with Lead	00:59	34:08

Points from	MSU	BAY
Turnovers	11	10
Paint	30	28
Second Chance	9	10
Fast Breaks	3	13
Bench	14	15

Period by Period Scoring	1st	2nd	3rd	4th	TOT
MSU	12	15	25	16	68
BAY	13	23	20	14	70



Official Basketball Box Score - Final  
**Alcorn at Baylor**  
 12/09/21 Ferrell Center, Waco  
 2021-22 Women's Basketball

Game Time: 11:00 AM  
 Game Duration: 1:46  
 Attendance: 5,838

Officials: Lisa Jones, Nykesha Thompson, Tiffany Bridges

Alcorn - 40

Record: 0-7

NO.	Name	Min	FG	3P	FT	Rebounds	Fouls	TP	AS	TO	ST	Blocks	+/-
			M-A	M-A	M-A	OR DR TOT	PF FD					BS BA	
42	Bria Broughton	C 17:15	0-2	0-0	0-0	0 0 0	0 0	0	0	0	0	0	-24
2	Zi Nyia White	G 18:41	3-7	0-0	2-2	0 4 4	3 1	8	1	2	0	0	-18
10	LeRae Rascoe	G 19:01	1-5	1-4	0-0	0 1 1	0 0	3	1	1	0	0	-40
14	Cayla Obillo	G 24:26	2-9	1-3	0-0	0 1 1	1 3	5	3	1	0	2	-45
15	Diamond Hall	G 14:35	2-6	2-4	0-0	0 2 2	5 0	6	0	3	0	0	-16
3	Nia McCalphie	19:45	0-4	0-3	0-0	0 2 2	2 0	0	2	1	0	0	-18
21	Akyriale Ford	22:45	3-3	0-0	0-0	2 3 5	1 0	6	0	0	0	0	-30
23	Yoginae Wright	20:44	2-3	0-1	0-0	1 3 4	2 0	4	3	2	0	0	-27
4	Kallyn Watkins	16:47	1-6	1-1	0-0	0 1 1	1 0	3	1	2	0	0	-17
30	Maya Claytor	14:54	1-4	1-2	0-0	0 1 1	1 1	3	0	0	0	0	-20
0	T'Naye Griffin	11:07	1-5	0-2	0-0	2 2 4	1 1	2	0	1	0	0	-15
Team						1 0 1		0	0	3			
Totals			16-54	6-20	2-2	6 20 26	17 6	40	11	18	1	0	-54

Technical Fouls: Team 1<sup>st</sup> 10:00

Dead Ball Rebounds: 0, 1

Baylor - 94

Record: 9-1

Team														Shooting By Period	
No.	Name	Min	FG	3P	FT	Rebounds	Fouls	PF	PD	AS	TO	ST	Blocks	BA	+/-
			M-A	M-A	M-A	OR DR TOT	PF FD						BS	BA	
1	Nalyssa Smith	F 20:01	10-13	1-2	4-6	2 8 10	0 4	25	3	0	1	1	0	44	1st FG% 9-15 60.0%
4	Queen Egbo	C 14:00	4-6	0-0	1-1	5 2 7	1 3	9	3	1	2	3	0	28	3PT% 2-5 40.0%
3	Jordan Lewis	G 19:01	3-6	2-5	0-0	0 2 2	1 2	8	3	1	0	0	0	40	FT% 5-6 83.3%
21	Ja'Mee Asberry	G 34:05	7-11	6-8	0-0	0 2 2	1 0	20	2	2	1	0	46	2nd FG% 11-17 64.7%	
24	Sarah Andrews	G 27:18	6-11	2-3	9-10	0 5 5	0 1	14	5	2	3	0	35	3PT% 3-5 60.0%	
51	Caitlin Bickle	30:13	2-6	0-2	9-10	1 5 6	1 4	13	6	2	2	0	36	FT% 1-2 50.0%	
22	Kamaria McDaniel	23:45	0-3	0-1	0-0	1 1 2	2 1	0	3	1	0	0	23	3rd FG% 11-20 55.0%	
25	Kendra Gillispie	21:37	1-4	0-1	3-4	1 4 5	0 2	5	1	0	1	0	16	FT% 2-3 66.7%	
11	Andrea Katramados	10:00	0-3	0-2	0-0	0 0 0	0 0	0	0	0	0	0	2	4th FG% 2-11 18.2%	
Team						1 2 3		0	0					3PT% 0-3 0.0%	
Totals			33-63	11-24	17-21	11 31 42	16 17	94	26	7	11	5	0	54	FT% 9-10 90.0%

Technical Fouls: NONE

Dead Ball Rebounds: 2, 1

	ASU	BAY
Biggest lead	0 (1 <sup>st</sup> 10:00)	55 (4 <sup>th</sup> 4:25)
Best Scoring Run	5 (3 <sup>rd</sup> 3:35)	19 (3 <sup>rd</sup> 7:18)
Lead Changes	0	1
Times Tied	1	
Time with Lead	00:00	39:48

Game Notes: Alcorn State assessed an administrative technical prior to start of the game •



Official Basketball Box Score - Final  
**North Texas at Baylor**  
 12/29/21 Ferrell Center, Waco, Texas  
 2021-22 Women's Basketball

Game Time: 7:00 PM  
 Game Duration: 2:57  
 Attendance: 4,158

Officials: Beverly Roberts, Brian Garland, Sal Escho

North Texas - 65

Record: 6-4

NO.	Name	Min	FG	3P	FT	Rebounds	Fouls	TP	AS	TO	ST	Blocks	+/-
			M-A	M-A	M-A	OR DR TOT	PF FD					BS BA	
24	Tommishia Lampkin	F 28:22	2-6	0-0	1-2	4 4 8	2 3	5	0	0	0	1	-14
41	Madi Townley	F 36:38	3-9	0-0	1-2	1 5 6	2 1	7	1	1	1	0	-22
0	Quincy Noble	G 33:10	6-18	1-4	5-7	0 3 3	2 4	18	2	1	0	0	-11
4	Jazion Jackson	G 36:36	5-12	3-6	1-2	0 4 4	1 4	14	1	1	1	0	-22
22	Aly Gamez	G 34:33	4-12	1-6	3-4	0 2 2	4 6	12	1	8	2	0	-12
20	Amber Dixon	15:12	1-2	0-1	2-2	0 1 1	4 1	4	0	1	1	0	-6
33	Emma Villas-Gomis	09:15	1-1	0-0	0-0	0 0 0	0 2	0	1	0	0	0	-6
1	Kendall McGruder	03:38	1-1	1-1	0-2	0 0 0	0 1	3	1	0	0	0	-7
11	Chloe Callahan	02:41	0-0	0-0	0-0	0 0 0	0 0	0	0	0	1	0	-5
Team						1 3 4		0	0				
Totals			23-61	6-18	13-21	6 22 28	15 20	65	6	13	6	1	-21

Technical Fouls: NONE

Dead Ball Rebounds: 7, 2

Baylor - 86

Record: 10-2

NO. Name		Min	FG	3P	FT	Rebounds	Fouls	TP	AS	TO	ST	Blocks	BS	BA	W+
			M-A	M-A	M-A	OR DR TOT	PF FD								
1	Nalyssa Smith	F 26:38	14-21	0-2	0-0	4 7 11	2 1	28	3	0	1	0	0	0	28
4	Queen Egbo	C 24:17	4-8	0-0	4-6	3 8 11	2 5	12	0	2	3	0	1	0	12
3	Jordan Lewis	G 32:42	5-9	2-5	1-2	0 1 1	4 5	13	7	1	1	0	0	26	
21	Ja'Mee Asberry	G 35:01	1-6	1-5	0-0	0 7 7	2 0	3	5	0	2	0	0	11	
24	Sarah Andrews	G 29:24	4-15	3-8	0-0	0 0 0	5 2	11	4	3	0	1	1	27	
10	Jaden Owens	19:09	0-1	0-1	0-0	2 3 5	2 0	0	2	1	0	0	0	1	
51	Calvin Bickle	24:33	5-9	3-4	0	1 5 6	4 2	13	1	5	0	1	0	3	
25	Kendra Gillispie	06:05	2-2	0-0	2-2	2 1 3	0 0	6	0	0	0	0	0	3	
11	Andrea Katramados	02:11	0-0	0-0	0-0	0 0 0	0 0	0	0	1	0	0	0	0	
Team						13 32 46	0 0	0	0	0	0	0	0	0	
Totals			35-71	9-25	1-10	11 21 32	41 15	86	22	13	8	2	1	21	
Shooting By Period															
1st FG%		11-22	50.0%												
3PT%		4-10	40.0%												
FT%		0-2	0%												
2nd FG%		7-14	50.0%												
3PT%		2-8	25.0%												
FT%		2-2	100%												
3rd FG%		11-19	57.9%												
3PT%		2-4	50.0%												
FT%		1-2	50%												
4th FG%		6-16	37.5%												
3PT%		1-6	16.7%												
FT%		4-4	100%												

## 2021-22 BOX SCORES



Official Basketball Box Score - Final  
**Baylor at Kansas St.**  
01/02/22 Bramlage Coliseum, Manhattan  
2021-22 Women's Basketball

Game Time: 1:00 PM  
Game Duration: 2:02  
Attendance: 2,393

Officials: Jesse Dickerson, Julie Krommenhoek, Scott Yarbrough

Baylor - 59

Record: 10-3 (0-1)

NO. Name	Min	FG M-A	3P M-A	FT M-A	Rebounds OR DR TOT	Fouls PF FD	TP	AS	TO	ST	Blocks BS BA	+/-	
1 Nalyssa Smith	F 40:00	4-12	0-0	4-6	4 3 7	4 4	12	3	1	2	2	3	-9
4 Queen Egbo	C 17:29	2-4	0-0	0-0	2 2 4	5 2	4	0	3	0	0	0	12
3 Jordan Lewis	G 36:21	4-10	1-6	5-8	1 4 5	4 5	14	4	4	5	0	0	-8
21 Ja'Mee Asberry	G 36:28	5-10	4-7	0-0	1 2 3	2 2	14	0	1	0	0	0	1
24 Sarah Andrews	G 24:30	2-8	1-3	0-0	0 0 0	1 1	5	2	3	0	0	0	-10
51 Caitlin Bickle	24:03	3-7	0-3	1-1	1 1 2	4 4	7	1	5	3	1	1	-15
22 Kamaria McDaniel	21:09	1-3	0-1	1-2	0 2 2	2 1	3	1	4	0	0	0	-16
Team					1 3 4		0	1					
Totals		21-54	6-20	11-17	10 17 27	22 19	59	11	22	10	3	4	-9

Technical Fouls: Bickie 3<sup>rd</sup> 6<sup>th</sup> 20

Kansas St. - 68

Record: 11-2 (1-0)

NO. Name	Min	FG M-A	3P M-A	FT M-A	Rebounds OR DR TOT	Fouls PF FD	TP	AS	TO	ST	Blocks BS BA	+/-	
50 Ayoka Lee	C 26:49	11-16	0-0	10-13	2 8 10	2 10	32	2	4	3	2	0	10
3 Jaelyn Glenn	G 32:56	2-4	1-3	2-4	0 3 3	2 2	7	1	2	1	0	0	5
4 Serena Sundell	G 34:11	3-8	1-4	3-4	1 0 1	4 5	10	6	6	0	0	0	18
5 Brylee Glenn	G 30:24	1-3	0-1	2-2	0 4 4	3 2	4	3	3	1	0	0	11
24 Emilee Ebert	G 23:13	1-2	1-1	0-0	1 2 3	4 0	3	2	4	0	0	0	5
23 Jada Moore	07:58	1-2	0-0	0-0	0 1 1	1 0	2	0	1	0	0	1	-2
41 Taylor Lauterbach	13:08	1-3	0-1	1-1	0 2 2	1 2	3	0	0	0	1	0	-1
13 Laura Macke	16:50	1-3	0-2	0-0	0 1 1	2 0	2	1	0	1	1	0	4
14 Rebekah Dallinger	09:19	1-1	1-1	0-0	0 0 0	0 0	3	1	0	1	0	0	1
2 Cymone Goodrich	05:12	1-3	0-0	0-0	1 1 2	0 0	2	0	2	0	0	1	-6
Team					1 2 3		0	0	1				
Totals		23-45	4-13	18-24	6 24 30	19 21	68	16	23	7	4	3	9

Technical Fouls: NONE

	Baylor	KState
Biggest lead	2 (1 <sup>st</sup> 9:28)	15 (2 <sup>nd</sup> 5:29)
Best Scoring Run	7 (3 <sup>rd</sup> 3:50)	10 (1 <sup>st</sup> 3:16)
Lead Changes	1	
Times Tied	0	
Time with Lead	00:35	38:53

Points from Turnovers	Baylor	KState
Turnovers	16	18
Paint	24	32
Second Chance	11	7
Fast Breaks	6	0
Bench	10	12

Period by Period Scoring	1st	2nd	3rd	4th	TOT
Baylor	7	14	17	21	59
KState	18	11	20	19	68

Shooting By Period	1st	2nd	3rd	4th	TOT
1 <sup>st</sup> FG%	6-12	50.0%			
3PT%	3-4	75.0%			
FT%	3-4	75%			
2 <sup>nd</sup> FG%	5-10	50.0%			
3PT%	0-2	0.0%			
FT%	1-1	100%			
3 <sup>rd</sup> FG%	7-13	53.8%			
3PT%	0-3	0.0%			
FT%	6-9	66.7%			
4 <sup>th</sup> FG%	5-10	50.0%			
3PT%	1-4	25.0%			
FT%	8-10	80%			
GM FG%	23-45	51.1%			
3PT%	4-13	30.8%			
FT%	18-24	75.0%			

Dead Ball Rebounds: 4, 1



Official Basketball Box Score - Final  
**Baylor at Oklahoma**  
01/12/22 Lloyd Noble Center, Norman  
2021-22 Women's Basketball

Game Time: 6:00 PM  
Game Duration: 1:58  
Attendance: 2,002

Officials: Maj Forsberg, Eric Brewton, Brenda Partridge

Baylor - 77

Record: 10-4 (0-2)

NO.	Name	Min	FG M-A	3P M-A	FT M-A	OR REB	TOT REB	Fouls PF	FD	TP	AS	TO	ST	Blocks BS	BAs	+/-
1	Nalyssa Smith	F 37:49	12-20	0-1	6-8	3	5 8	3	5	30	2	3	3	0	1	-5
4	Queen Egbo	C 22:46	6-12	0-0	4-5	4	6 10	2	5	16	0	2	1	2	0	5
3	Jordan Lewis	G 37:29	2-5	2-5	1-2	1	10 11	4	4	6	7	5	0	0	1	-2
21	Ja'Mee Asberry	G 37:46	2-4	2-2	2-2	0	0 0	0	1	1	8	0	1	0	0	-3
24	Sarah Andrews	G 34:37	0-4	0-2	5-6	0	2 2	4	2	5	2	4	2	0	0	-5
51	Caitlin Bickie	19:25	5-10	0-1	1-2	1	2 3	2	2	11	2	1	1	0	1	-12
10	Jaden Owens	07:54	0-0	0-0	0-0	0	1 1	0	0	0	1	2	0	0	0	-5
22	Kamaria McDaniel	02:14	0-0	0-0	0-0	0	0 0	0	0	0	0	0	0	0	0	-3
Team						3	1 4									
Totals			27-56	4-11	19-25	12	27 39	16	21	77	12	18	7	2	3	-6

Technical Fouls: NONE

Shooting By Period	1st	2nd	3rd	4th	TOT
1 <sup>st</sup> FG%	9-14	64.3%			
3PT%	0-1	0.0%			
FT%	3-4	75%			
2 <sup>nd</sup> FG%	8-12	66.7%			
3PT%	1-2	50.0%			
3 <sup>rd</sup> FG%	7-17	41.2%			
3PT%	3-3	100.0%			
FT%	7-8	87.5%			
4 <sup>th</sup> FG%	3-13	23.1%			
3PT%	0-5	0.0%			
FT%	6-9	66.7%			
GM FG%	27-56	48.2%			
3PT%	4-11	36.4%			
FT%	19-25	76.0%			

Dead Ball Rebounds: 4, 0

Oklahoma - 83

Record: 14-2 (3-1)

NO.	Name	Min	FG	3P	FT	Rebounds	Fouls	PF	TP	AS	TO	ST	Blocks	BS	+/-
34	Liz Scott	F 11:49	1-6	0-0	0-0	2 1 3	4	0	2	3	0	0	0	1	-10
4	Kennady Tucker	G 32:34	3-6	2-3	1-2	3 1 4	4	2	9	3	0	1	0	0	4
10	Keldie Washington	G 15:47	2-6	2-4	0-2	1 0 1	4	2	6	3	3	2	0	0	-8
25	Mad Williams	G 36:15	7-21	1-6	3-5	0 3 3	3	3	18	7	5	0	0	1	5
30	Taylor Robertson	G 40:00	5-5	5-5	0-0	0 5 5	0	1	15	2	1	1	0	0	6
1	Nevaeh Tot	31:39	2-4	1-2	6-6	1 3 4	2	6	11	4	3	2	0	0	16
24	Skylar Vann	29:54	8-13	3-7	3-3	2 5 7	4	2	22	3	2	4	3	0	19
14	Bre'Yon White	02:02	0-0	0-0	0-0	0 0 0	0	0	0	0	0	0	0	0	-2
Team						0 1 1			0	0					
Totals			28-61	14-27	13-18	9 19 28	21	16	83	22	14	10	3	2	6

Technical Fouls: NONE

Shooting By Period	1st	2nd	3rd	4th	TOT
1 <sup>st</sup> FG%	6-16	37.5%			
3PT%	4-8	50.0%			
FT%	0-0	0%			
2 <sup>nd</sup> FG%	6-17	35.3%			
3PT%	2-7	28.6%			
3 <sup>rd</sup> FG%	6-7	85.7%			
3 <sup>rd</sup> FG%	9-14	64.3%			
3PT%	5-8	62.5%			
FT%	1-2	50%			
4 <sup>th</sup> FG%	7-14	50.0%			
3PT%	3-4	75.0%			
FT%	6-9	66.7%			
GM FG%	28-61	45.9%			
3PT%	14-27	51.9%			
FT%	13-18	72.2%			

Dead Ball Rebounds: 2, 0

Biggest lead	BU	OU
Biggest lead	10 (1 <sup>st</sup> 7:07)	6 (4 <sup>th</sup> 0:20)
Best Scoring Run	10 (1 <sup>st</sup> 7:07)	9 (4 <sup>th</sup> 2:15)
Lead Changes	1	
Times Tied	4	
Time with Lead	34:40	02:56

Points from Turnovers	BU	OU
Turnovers	9	25
Paint	40	26
Second Chance	17	4
Fast Breaks	6	15
Bench	11	33

Period by Period Scoring	1st	2nd	3rd	4th	TOT
BU	21	20	24	12	77
OU	16	20	24	23	83



Official Basketball Box Score - Final  
**Oklahoma St. at Baylor**  
01/19/22 Ferrell Center, Waco  
2021-22 Women's Basketball

Game Time: 7:00 PM  
Game Duration: 1:54  
Attendance: 4,078

Officials: Gina Cross, Michael McConnell, Karlena Tobin

Oklahoma St. - 49

Record: 6-9 (1-5)

No.	Name		Min	FG M-A	3P M-A	FT M-A	Rebounds			Fouls PF FD	TP	AS	TO	ST	BS BA	+/-		
14	Taylen Collins	F	36:08	7-10	0-0	2-3	3	3	6	3	16	2	3	2	0	-16		
20	Macie James	F	20:19	0-6	0-3	0-0	1	3	4	5	0	0	3	1	0	-13		
25	Abbie Winchester	F	10:15	1-1	0-0	0-0	0	1	1	3	0	2	0	0	0	-9		
2	Neferatall Notooa	G	33:37	3-10	2-7	0-0	0	1	1	4	0	8	1	3	1	0	-18	
3	Micah Dennis	G	16:01	0-5	0-1	2-2	1	2	2	1	2	2	1	1	0	0	-7	
1	Kassidy De Lapp		24:13	1-3	0-0	0-0	2	3	5	4	2	2	2	1	1	0	-4	
15	Levy Keys		33:39	5-11	2-6	4-6	0	1	1	1	3	16	0	3	0	0	-18	
11	N'Yah Boyd		12:59	1-3	0-0	1-2	0	3	3	1	3	0	0	1	1	0	-4	
22	Ruthie Udumoh		10:11	0-0	0-0	0-0	0	1	1	0	0	0	1	0	0	0	-4	
35	Brittany Reeves		02:38	0-1	0-0	0-0	0	0	0	1	0	0	1	0	0	0	-3	
Team				18-50	4-17	9-13	8	23	31	23	11	49	7	17	6	1	4	-18

Technical Fouls: NONE

Shooting By Period	1st	2nd	3rd	4th	TOT
1 <sup>st</sup> FG%	6-12	50.0%			
3PT%	0-2	0.0%			
FT%	0-0	0%			
2 <sup>nd</sup> FG%	4-10	40.0%			
3PT%	1-3	33.3%			
FT%	5-8	62.5%			
3 <sup>rd</sup> FG%	3-14	21.4%			
3PT%	0-5	0.0%			
FT%	3-4	75%			
4 <sup>th</sup> FG%	5-14	35.7%			
3PT%	3-7	42.9%			
FT%	1-1	100%			
GM FG%	18-50	36.0%			
3PT%	4-17	23.5%			
FT%	9-13	69.2%			

Dead Ball Rebounds: 1, 0

Baylor - 67

Record: 12-4 (2-2)

No.	Name	Min	FG M-A	3P M-A	FT M-A	Rebounds OR DR TOT	Fouls PF FD	TP	AS	TO	ST	Blocks BS BA	+/-	
1	Nalyssa Smith	F 35:14	6-15	0-1	4-6	4 9 13	4 7	16	1	4	1	0	22	
4	Queen Egbo	C 28:44	5-9	0-0	9-9	2 6 8	1 7	19	2	1	1	2	0	12
3	Jordan Lewis	G 32:38	5-9	1-1	2-2	3 4 7	3 13	7	1	1	0	0	8	
21	Michael Asberry	G 36:20	3-6	1-2	0-0	0 1 1	0 0 0	2	1	3	0	1	15	
34	Sarah Andrews	G 28:21	1-6	0-2	0-0	0 1 1	0 0 2	2	1	3	0	1	12	
10	Jaden Owens	18:40	0-2	0-2	0-0	0 0 0	1 0 0	0	1	1	1	0	0	2
51	Caitlin Bickle	20:03	3-6	0-2	2-5	2 2 4	1 5 8	1	1	1	1	0	1	9
Team						2 3 5			0	0				
Totals			23-52	2-11	19-25	11 25 36	11 23 67	16	12	9	4	1	18	

## 2021-22 BOX SCORES



Official Basketball Box Score - Final  
**Iowa St. at Baylor**  
01/23/22 Ferrell Center, Waco  
2021-22 Women's Basketball

Game Time: 2:00 PM  
Game Duration: 1:56  
Attendance: 4,541

Iowa St. - 61

Record: 16-3 (5-2)

NO. Name	Min	FG M-A	3P M-A	FT M-A	Rebounds OR DR TOT	Fouls PF FD	TP	AS	TO	ST	Blocks BS BA	+/-
31 Morgan Kane	F 17:20	2-3	0-0	2-4	1 2 3	2 4	6	1	4	0	0 1	-16
11 Emily Ryan	G 32:30	2-9	1-6	4-4	0 2 2	3 4	9	1	4	2	0 1	-32
13 Maggie Espenmiller-McGraw	G 23:32	3-6	3-5	2-2	0 5 5	2 0	11	2	1	0	0 1	-7
21 Lexi Donarski	G 40:00	1-10	0-5	2-2	0 3 3	0 2	4	3	1	1	0 0	-26
24 Ashley Joens	G 33:42	4-14	3-8	8-8	1 6 7	3 4	19	3	3	0	0 4	-27
25 Beatriz Jordao	20:36	5-8	0-0	0-0	2 0 2	5 1	10	0	2	2	1 0	-17
1 Nyamer Diew	12:37	1-2	0-1	0-0	1 1 2	0 1	2	0	1	0	1 0	-8
20 Aubrey Joens	08:42	0-2	0-2	0-0	0 1 1	0 1	0	0	1	1	0 0	-4
15 Izzi Zingaro	01:22	0-0	0-0	0-0	1 0 1	1 1	0	0	0	0	0 0	2
32 Maggie Vick	06:18	0-0	0-0	0-0	0 1 1	2 0	0	1	0	0	0 0	1
23 Maddie Frederick	03:21	0-1	0-0	0-0	0 0 0	0 0	0	0	0	0	0 0	4
Team					3 1 4							
Totals		18-55	7-27	18-20	9 22 31	18 18	61	11	17	6	2 7	-26

Technical Fouls:NONE

Dead Ball Rebounds: 1, 2

Baylor - 87

Record: 13-4 (3-2)

NO. Name	Min	FG M-A	3P M-A	FT M-A	Rebounds OR DR TOT	Fouls PF FD	TP	AS	TO	ST	Blocks BS BA	+/-
1 Nalysa Smith	F 31:22	7-15	0-1	3-3	1 5 6	3 3	17	1	1	0	3 0	33
4 Queen Egbo	C 29:25	4-13	0-0	6-7	9 12 21	3 6	14	3	3	3	0 0	19
3 Jordan Lewis	G 28:33	9-11	6-7	0-4	0 1 1	2 3	24	6	1	1	0 1	32
21 Ja'Mee Asberry	G 29:46	1-2	1-2	0-0	0 3 3	4 1	3	3	1	0	0 0	6
24 Sarah Andrews	G 33:50	7-13	4-5	0-0	0 2 2	2 1	18	5	2	0	0 0	22
10 Jaden Owens	25:33	2-4	1-2	0-0	0 3 3	3 1	5	4	2	2	0 1	26
11 Caitlin Bickie	19:13	2-7	0-2	2-2	3 1 4	1 3	6	4	1	1	1 0	0
51 Andrea Katramados	02:18	0-2	0-2	0-0	0 0 0	0 0	0	0	0	0	0 0	-8
Team					1 2 3							
Totals		32-67	12-21	11-16	14 29 43	18 18	87	26	11	7	7 2	26

Technical Fouls:NONE

Dead Ball Rebounds: 2, 0

	ISU	BAY
Biggest lead	2 (1 <sup>st</sup> 5:52)	34 (4 <sup>th</sup> 2:58)
Best Scoring Run	6 (1 <sup>st</sup> 0:01)	19 (3 <sup>rd</sup> 2:15)
Lead Changes	4	
Times Tied	2	
Time with Lead	01:15	35:57

Points from Turnovers	ISU	BAY
Paint	16	28
Second Chance	6	10
Fast Breaks	5	11
Bench	12	11

Period by Period Scoring	1st	2nd	3rd	4th	TOT
ISU	13	15	15	18	61
BAY	12	27	27	21	87

Game Notes: Q3 - 39.5 Iowa State 13 replaces 1 for medical, 13 shoots FT •



Official Basketball Box Score - Final  
**Baylor at Texas Tech**  
01/26/22 United Supermarkets Arena, Lubbock  
2021-22 Women's Basketball

Game Time: 7:00 PM  
Game Duration: 1:59  
Attendance: 4,504

Officials: Kevin Pethel, Doug Knight, Cameron Inouye

Baylor - 88

Record: 14-4 (4-2)

NO. Name	Min	FG M-A	3P M-A	FT M-A	Rebounds OR DR TOT	Fouls PF FD	TP	AS	TO	ST	Blocks BS BA	+/-
1 Nalysa Smith	F 38:48	10-21	0-1	3-4	4 5 9	1 2	23	0	0	0	0 0	10
4 Queen Egbo	C 19:00	3-7	0-0	3-4	2 1 3	4 4	9	0	2	0	1 0	-4
3 Jordan Lewis	G 29:28	5-9	1-4	5-6	1 1 2	4 5	16	2	3	1	0 0	2
21 Ja'Mee Asberry	G 32:26	3-4	3-4	0-0	0 2 2	1 0	9	3	2	1	0 0	10
24 Sarah Andrews	G 34:27	7-10	2-3	3-4	0 3 3	2 4	19	2	1	1	0 1	8
10 Jaden Owens	14:49	0-0	0-0	0-0	0 2 2	1 0	0	1	1	1	0 0	5
51 Caitlin Bickie	31:02	4-6	0-0	4-4	4 3 7	2 5	12	1	1	1	0 0	9
Team					1 0 1							
Totals		32-57	6-12	18-22	12 17 29	15 20	88	9	11	4	1 1	8

Technical Fouls:NONE

Dead Ball Rebounds: 4, 0

Texas Tech - 80

Record: 9-10 (2-6)

NO. Name	Min	FG M-A	3P M-A	FT M-A	Rebounds OR DR TOT	Fouls PF FD	TP	AS	TO	ST	Blocks BS BA	+/-
10 Bryn Gerlich	F 38:30	7-11	2-4	6-7	0 0 0	2 5	22	7	4	1	0 0	-3
24 Taylah Thomas	F 25:58	4-7	1-2	4-5	0 4 4	4 4	13	2	4	1	0 0	-7
23 Khadija Faye	C 26:10	2-6	0-0	0-0	4 4 8	4 1	4	1	1	1	0 0	-7
4 Lexy Hightower	G 30:06	3-4	3-4	0-0	0 1 1	1 1	9	0	1	0	0 0	-4
12 Vivian Gray	G 39:32	8-16	2-2	3-4	2 2 4	4 3	21	5	2	3	1 0	-6
1 Ella Tolaonono	10:10	0-2	0-0	0-2	2 1 3	4 0	1	0	1	0	0 0	1
5 Rhylye McKinney	14:46	3-4	2-2	0-0	0 1 1	0 0	8	0	2	0	0 0	-12
33 Charisse Embury	11:40	1-3	1-1	0-0	0 0 0	0 0	3	0	0	0	0 0	-9
32 Tatum Veltnerheimer	03:08	0-0	0-0	0-0	0 0 0	1 0	1	0	1	0	0 0	-7
Team					1 0 1							
Totals		28-53	11-15	13-18	9 13 22	20 15	80	17	13	6	1 1	-8

Technical Fouls:NONE

Dead Ball Rebounds: 4, 0

	BAY	TTU
Biggest lead	16 (2 <sup>nd</sup> 1:20)	0 (1 <sup>st</sup> 10:00)
Best Scoring Run	7 (1 <sup>st</sup> 8:00)	15 (3 <sup>rd</sup> 7:18)
Lead Changes	0	
Times Tied	1	
Time with Lead	38:46	00:00

Points from Turnovers	BAY	TTU
Paint	40	22
Second Chance	20	10
Fast Breaks	3	8
Bench	12	11

Period by Period Scoring	1st	2nd	3rd	4th	TOT
BAY	29	22	20	17	88
TTU	14	24	28	14	80



Official Basketball Box Score - Final  
**Oklahoma at Baylor**  
02/02/22 Ferrell Center, Waco  
2021-22 Women's Basketball

Game Time: 7:00 PM  
Game Duration: 2:04  
Attendance: 4,274

Officials: Felicia Grinter, Bill Laranca, Nykesha Thompson

Oklahoma - 78

Record: 19-3 (8-2)

NO. Name	Min	FG M-A	3P M-A	FT M-A	Rebounds OR DR TOT	Fouls PF FD	TP	AS	TO	ST	Blocks BS BA	+/-
34 Liz Scott	F 17:27	7-10	0-0	2-2	3 2 5	4 2	16	0	1	0	0 0	3
1 Nevaeh Tot	G 32:21	1-2	0-1	0-0	0 3 3	2 0	2	2	3	1	0 0	3
4 Kennedy Tucker	G 29:48	2-10	0-3	1-1	2 3 5	3 2	5	1	7	3	0 1	-13
25 Madi Williams	G 30:33	9-17	0-3	2-2	2 6 8	3 4	20	5	2	2	0 1	4
30 Taylor Robertson	G 37:53	3-11	2-6	6-6	1 6 7	2 2	14	4	1	2	0 0	2
10 Kobbie Washington	17:17	1-2	0-0	0-0	0 4 4	3 6	8	0	2	1	0 0	11
21 Skylar Vann	18:33	3-6	1-2	1-2	2 5 7	4 4	8	2	2	2	0 1	-1
21 Nydia Lampkin	09:05	1-4	0-0	0-0	0 0 0	3 0	2	1	2	0	0 1	-7
23 Kaley Perkins	02:41	0-0	0-0	0-0	0 0 0	0 0	0	0	0	0	0 0	0
12 Gabby Gregory	04:22	1-2	1-2	0-0	0 0 0	1 0	3	0	0	0	0 0	3
Team					5 2 7							
Totals		28-64	4-20	18-21	15 31 46	25 20	78	15	20	11	0 4	1

Technical Fouls:NONE

Dead Ball Rebounds: 3, 2

Baylor - 77

Record: 15-5 (5-3)

NO. Name	Min	FG M-A	3P M-A	FT M-A	Rebounds OR DR TOT	Fouls PF FD	TP	AS	TO	ST	Blocks BS BA	+/-
1 Nalysa Smith	F 37:47	6-15	0-1	7-9	8 4 12	2 6	19	2	5	0	3 0	2
4 Queen Egbo	C 15:53	0-5	0-0	2-4	3 1 4	4 2	0	2	1	1	0 0	-7
3 Jordan Lewis	G 25:15	1-4	0-1	3-3	1 1 2	4 3	5	3	2	0	0 0	3
21 Ja'Mee Asberry	G 39:31	4-12	4-11	3-4	1 2 3	3 2	15	4	2	2	0 0	-1
24 Sarah Andrews	G 35:49	9-20	3-10	2-3	0 2 2	1 5	23	6	4	2	0 0	0
51 Caitlin Bickie	26:49	4-6	0-1	3-5	0 4 4	4 6	11	1	1	0	0 0	3
10 Jaden Owens	18:56	1-6	0-3	0-0	0 2 2	2 1	2	1	0	0	0 0	-5
Team					1 2 3							
Totals		25-68	7-27	20-28	14 21 35	20 25	77	17	15	8	4 0	-1

Technical Fouls:NONE

Dead Ball Rebounds: 4, 0

	OKL	BAY
Biggest lead	4 (1 <sup>st</sup> 8:14)	12 (2 <sup>nd</sup> 9:48)
Best Scoring Run	6 (4 <sup>th</sup> 1:12)	7 (3 <sup>rd</sup> 9:08)
Lead Changes	12	
Times Tied	10	
Time with Lead	04:25	31:18

Points from Turnovers	OKL	BAY
Paint	38	32
Second Chance	16	9
Fast Breaks	19	17
Bench	21	13

Period by Period Scoring	1st	2nd	3rd	4th	TOT
OKL	16	22	27	13	78
BAY	25	13	26	13	77



## 2021-22 BOX SCORES



Official Basketball Box Score - Final  
**Texas at Baylor**  
02/04/22 Ferrell Center, Waco  
2021-22 Women's Basketball

Game Time: 7:00 PM  
Game Duration: 2:19  
Attendance: 5,435



Official Basketball Box Score - Final  
**Baylor at Texas**  
02/06/22 Frank Erwin Center, Austin  
2021-22 Women's Basketball

Game Time: 3:00 PM  
Game Duration: 2:04  
Attendance: 5,300

Officials: Jesse Dickerson, Maj Forsberg, Bryan Entlerne

Texas - 63

Record: 15-5 (5-4)

NO. Name	Min	FG M-A	3P M-A	FT M-A	Rebounds OR DR TOT	Fouls PF FD	TP	AS	TO	ST	Blocks BS BA	+/-
1 Lauren Ebo	F 21:31	1-3	0-0	1-4	4 2 6	5 4	3	0	3	1	0 1 2	
21 Aaliyah Moore	F 18:52	2-5	0-0	4-5	2 1 3	2 4	8	0	1	1	0 0 -9	
3 Rori Harmon	G 36:01	5-14	0-0	0-0	1 2 3	3 2	10	6	2	3	0 0 -10	
11 Joanne Allen-Taylor	G 32:55	3-8	1-1	2-2	0 0 0	4 2	9	2	4	1	0 0 -8	
31 Audrey Warren	G 27:54	2-8	0-0	4-5	2 2 4	3 3	8	2	2	2	0 0 -13	
22 Kyndall Hunter	08:10	1-3	0-1	0-0	1 0 1	0 0	2	0	0	0	0 0 -4	
10 Shay Holle	17:32	2-4	0-0	0-2	2 1 3	2 1	4	0	0	0	0 0 -6	
35 Latasha Lattimore	09:57	0-2	0-0	0-0	0 3 3	1 0	0	1	1	0	1 0 -2	
5 DeYona Gaston	09:17	1-1	0-0	0-0	1 2 3	2 1	2	0	2	0	0 0 -11	
2 Aaliyah Matharu	17:51	4-6	3-3	0-0	0 4 4	4 3	17	0	5	1	0 1 1	
Team					3 1 4		0					
Totals		22-59	5-8	14-21	16 18 34	26 20	63	11	20	9	1 2 -12	

Technical Fouls:NONE

Dead Ball Rebounds: 5, 1

Baylor - 75

Record: 16-5 (6-3)

NO. Name	Min	FG M-A	3P M-A	FT M-A	Rebounds OR DR TOT	Fouls PF FD	TP	AS	TO	ST	Blocks BS BA	+/-
1 NaLyssa Smith	F 36:45	10-12	1-1	4-4	2 6 8	3 4	25	0	5	0	1 0 11	
4 Queen Egbo	C 13:49	1-2	0-0	4-4	1 2 3	5 3	6	0	3	0	0 0 16	
3 Jordan Lewis	G 31:59	0-6	0-4	4-6	0 2 2	3 7	4	6	4	5	0 0 5	
21 Ja'Mee Asberry	G 36:55	5-12	4-10	1-1	0 4 4	0 2	15	1	1	1	0 0 12	
24 Sarah Andrews	G 36:14	5-11	1-3	6-7	0 7 7	3 6	17	8	6	5	1 0 13	
10 Jaden Owens	14:52	0-1	0-0	2-2	0 1 1	2 2	2	2	0	0	0 0 6	
51 Caitlin Bickle	29:26	3-5	0-0	0-0	1 1 2	4 2	6	2	0	0	0 1 -3	
Team					3 0 3		0					
Totals		24-49	6-18	21-24	7 23 30	20 26	75	19	19	11	2 1 12	

Technical Fouls:NONE

Dead Ball Rebounds: 2, 0

	TEX	BAY
Biggest lead	0 (1 <sup>st</sup> 10:00)	15 (4 <sup>th</sup> 0:41)
Best Scoring Run	7 (2 <sup>nd</sup> 1:33)	11 (1 <sup>st</sup> 2:53)
Lead Changes	0	
Times Tied	1	
Time with Lead	00:00	38:45

Points from	TEX	BAY
Turnovers	17	25
Paint	18	28
Second Chance	12	5
Fast Breaks	10	24
Bench	25	8

Period by Period Scoring	1st	2nd	3rd	4th	TOT
TEX	15	19	11	18	63
BAY	23	19	14	19	75

Baylor - 63

Record: 17-5 (7-3)

NO. Name	Min	FG M-A	3P M-A	FT M-A	Rebounds OR DR TOT	Fouls PF FD	TP	AS	TO	ST	Blocks BS BA	+/-
1 NaLyssa Smith	F 34:44	11-18	0-1	6-6	3 10 13	4 6	28	0	2	0	0 1 12	
4 Queen Egbo	G 23:37	1-6	0-0	2-2	2 6 8	4 2	4	1	2	0	2 0 1	
3 Jordan Lewis	G 35:06	2-7	0-1	5-7	1 1 2	2 7	9	3	5	0	0 1 7	
21 Ja'Mee Asberry	G 31:34	5-9	3-5	0-0	0 4 4	1 1	13	0	1	2	0 0 16	
24 Sarah Andrews	G 35:53	1-7	0-3	2-2	0 3 3	1 3	4	4	0	2	0 0 12	
10 Jaden Owens	17:27	0-2	0-2	0-0	0 2 2	0 0	0	0	0	0	0 0 -11	
51 Caitlin Bickle	21:39	1-4	1-2	2-2	3 0 3	3 3	5	0	3	0	0 1 3	
Team					3 2 5		0					
Totals		21-53	4-14	17-19	12 28 40	15 22	63	8	14	4	2 3 8	

Technical Fouls:NONE

Shooting By Period  
1<sup>st</sup> FG% 4-13 30.8%  
3PT% 0-3 0.0%  
FT% 2-2 100%  
2<sup>nd</sup> FG% 3-14 21.4%  
3PT% 0-3 0.0%  
FT% 2-3 66.7%  
3<sup>rd</sup> FG% 11-14 78.6%  
3PT% 3-4 75.0%  
FT% 2-2 100%  
4<sup>th</sup> FG% 3-12 25.0%  
3PT% 1-4 25.0%  
FT% 11-12 91.7%  
GM FG% 21-53 39.6%  
3PT% 4-14 28.6%  
FT% 17-19 89.5%

Dead Ball Rebounds: 1, 0

Texas - 55

Record: 15-6 (5-5)

NO. Name	Min	FG MA	3P MA	FT MA	Rebounds OR DR TOT	Fouls PF FO	TP	AS	TO	ST	Blocks		+/-	Shooting By Period		
											BS	BA		1st FG%	3-15	20.0%
1 Lauren Ebo	F 31:57	2-4	0-0	3-4	1 5 6	3 4	7	0	3	1	0	0	-10	1st FG%	3-15	20.0%
21 Aaliyah Moore	F 08:52	1-4	0-0	0-0	0 0 0	4 0	2	1	0	0	0	0	1	3PT%	15	20.0%
2 Aaliyah Matharu	G 24:31	3-13	1-7	3-4	2 0 2	4 2	10	2	1	1	1	1	-9	2nd FG%	7-13	53.8%
3 Rori Harmon	G 25:30	1-6	0-2	3-4	0 3 3	2 2	5	1	3	1	0	0	-13	3PT%	12	50.0%
11 Joanne Allen-Taylor	G 40:00	8-10	2-2	0-2	2 2 4	2 1	18	0	0	0	0	0	-8	FT%	3-4	75%
5 DeYona Gaston	12:27	1-5	0-0	3-4	1 3 4	2 2	5	0	0	2	1	0	3	3rd FG%	5-11	45.5%
35 Latasha Lattimore	03:16	0-0	0-0	0-0	0 1 1	0 0	0	0	0	0	0	0	-5	3PT%	1-3	33.3%
31 Audrey Warren	23:28	0-2	0-0	0-0	2 5 7	1 2	0	0	2	1	1	0	-4	FT%	6-10	60%
10 Shay Holle	19:31	2-5	1-1	0-2	1 2 3	2 1	5	1	0	0	0	0	4	4th FG%	4-4	28.6%
22 Kyndall Hunter	10:28	1-4	0-1	1-2	0 0 0	2 1	3	1	1	1	0	0	2	3PT%	1-3	33.3%
Team					2 0 2		0							FT%	3-6	50%
Totals		19-53	4-13	13-22	11 21 32	22 15	55	6	12	7	3	2	-8	GM FG%	19-53	35.8%

Technical Fouls:NONE

Shooting By Period  
1<sup>st</sup> FG% 3-15 20.0%  
3PT% 1-5 20.0%  
FT% 1-2 50%  
2<sup>nd</sup> FG% 7-13 53.8%  
3PT% 1-2 50.0%  
FT% 3-4 75%  
3<sup>rd</sup> FG% 5-11 45.5%  
3PT% 1-3 33.3%  
FT% 6-10 60%  
4<sup>th</sup> FG% 4-14 28.6%  
3PT% 1-3 33.3%  
FT% 3-6 50%  
GM FG% 19-53 35.8%  
3PT% 4-13 30.8%  
FT% 13-22 59.1%

Dead Ball Rebounds: 4, 0

	BU	TEXAS
Biggest lead	9 (4 <sup>th</sup> 0:22)	10 (3 <sup>rd</sup> 9:46)
Best Scoring Run	10 (1 <sup>st</sup> 3:29)	10 (2 <sup>nd</sup> 7:48)
Lead Changes	5	
Times Tied	5	
Time with Lead	14:59	21:23

Points from	BU	TEXAS
Turnovers	19	9
Paint	24	14
Second Chance	9	11
Fast Breaks	10	5
Bench	5	13

Period by Period Scoring	1st	2nd	3rd	4th	TOT
BU	10	8	27	18	63
TEXAS	8	18	17	12	55







2021-22

17-5

BIG 12

7-3

AP

10th

COACHES

11th

NET

10th

#10/11 BAYLOR vs. rv/rv KANSAS STATE | GAME 23  
Feb. 9, 2022 (Waco, Texas/Ferrell Center)

1



## NaLyssa Smith (NUH-lis-suh)

F • 6-4 • Sr. • Converse, Texas

PTS	REB	AST	FG%	3FG%	FT%	MIN
SEA 20.8	11.4	1.2	.542	.261	.764	32.6
CAR 14.6	7.9	0.8	.557	.200	.756	24.5
PTS	REB	AST	STL	BLK		
30	19	4	3	4		

- Coming off one of the most decorated single-season performances in BU WBB history last year
- Reigning Wade Trophy winner named AP Preseason All-American, 4x Preseason Watch List member
- No. 14 in career points in Baylor WBB history
- Nearly had a 20-20 performance against Houston with 21 points and 19 rebounds
- Nation's leader with 11-straight double-doubles
- Big 12 Preseason POY Playing in space more this season in Nicki Collen's new offensive system
- Netted 30 points twice this season (at Maryland, at Oklahoma)

3



## Jordan Lewis

G • 5-7 • GS • Windermere, Fla.

PTS	REB	AST	FG%	3FG%	FT%	MIN
SEA 11.4	3.4	5.2	.426	.330	.653	31.6
CAR 12.1	4.0	4.1	.372	.331	.717	33.2
PTS	REB	AST	STL	BLK		
32	11	11	6	2		

- Sixth-year senior transfer from Alabama where she left top-10 in career points, assists
- Lieberman Award Watch List and Wooden Award Top 50 Watch List member
- Recorded 29 points against No. 3 Maryland. Hit a key 3-pointer with a minute to play.
- Plays the 1 and the 2 alongside Sarah Andrews; Strong driver off ball screens
- Graduated with her bachelor's and master's from Alabama
- Has started every game she's played
- Recorded a triple-double at West Virginia (1/29)

4



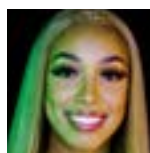
## Queen Egbo (EGG-bow)

F • 6-3 • Sr. • Houston, Texas

PTS	REB	AST	FG%	3FG%	FT%	MIN
SEA 9.9	7.9	0.9	.477	.000	.788	22.5
CAR 9.1	6.7	0.6	.516	.000	.596	18.4
PTS	REB	AST	STL	BLK		
26	21	4	4	7		

- No. 8 all-time in BU history in career blocks
- 3x Preseason Watch List member; Preseason All-Big 12 Team honoree
- Stretched her range but is still efficient at the block
- Put up double-figure points in 3-straight games against ASU, Houston and Morehead St.
- Brought down a career-high 16 boards vs. Morehead State
- Reached 1,000 career points vs. Oklahoma State

10



## Jaden Owens

G • 5-8 • Jr. • Plano, Texas

PTS	REB	AST	FG%	3FG%	FT%	MIN
SEA 1.7	1.7	1.3	.250	.179	.700	16.3
CAR 2.0	1.3	1.7	.316	.250	.588	12.8
PTS	REB	AST	STL	BLK		
15	5	8	3	1		

- Claimed the role of defensive stopper this season
- Set a career high with five rebounds in BU's season-opener vs. Texas State
- Transferred from UCLA and made her BU debut on Nov. 17, 2020 vs. Northwestern State
- Scored a career-high 15 points, including 4 triples, vs. Iowa State (1/16/20)

11



## Andrea Katramados (ANNE-dree-uh cat-truh-MAD-us)

G • 5-10 • Fr. • Belle Mead, N.J.

PTS	REB	AST	FG%	3FG%	FT%	MIN
SEA 0.0	0.0	0	.000	.000	.000	3.4
CAR 0.0	0.0	0	.000	.000	.000	3.4
PTS	REB	AST	STL	BLK		
--	--	--	--	1		

- Freshman walk-on from New Jersey
- Made her Baylor debut at UT Arlington
- Notched her first career block against Houston
- Played a career-best 10 minutes vs. Alcorn State

21



## Ja'Mee Asberry (JAY-mee)

G • 5-5 • Jr. • Tulsa, Okla.

PTS	REB	AST	FG%	3FG%	FT%	MIN
SEA 10.1	2.6	1.9	.399	.394	.842	34.0
CAR 10.0	2.4	2.7	.352	.349	.710	28.2
PTS	REB	AST	STL	BLK		
28	7	9	5	1		

- Sharpshooter transfer from Oklahoma State
- Named All-Big 12 Second Team after averaging 17.0 ppg and shooting .419 from 3 at OSU in 2020-21
- Made her Baylor debut against Texas State and drained five 3s a game later at UT Arlington
- Tied her career high with six 3-pointers against Alcorn State
- Fire and ice at Kansas as she hit six 3s, the last to pull BU within a point of KU with less than 20 seconds to go before she drained a pair of FTs with 12 seconds left to give BU the lead for good

24



## Sarah Andrews

G • 5-6 • So. • Irving, Texas

PTS	REB	AST	FG%	3FG%	FT%	MIN
SEA 12.3	3.2	3.9	.414	.434	.681	32.3
CAR 7.5	2.0	2.3	.400	.416	.673	20.0
PTS	REB	AST	STL	BLK		
25	8	9	5	1		

- Starting point guard for the Bears after averaging 4.2 min/gm last season with a veteran back court
- Logged a career-best 37 minutes at No. 3 Maryland where she dished out eight dimes to go with 10 points
- Topped that mark with nine assists a week later against Houston
- Started 6-for-6 from deep to finish with 20 points vs. Morehead State
- Topped those numbers with 7 3s for 25 points at Kansas
- No. 6 nationally in 3-point percentage

25



## Kendra Gillispie (guh-LESS-pee)

F • 6-2 • Fr. • Oklahoma City, Okla.

PTS	REB	AST	FG%	3FG%	FT%	MIN
SEA 2.6	1.6	0.3	.375	.000	.900	7.4
CAR 2.6	1.6	0.3	.375	.000	.900	7.4
PTS	REB	AST	STL	BLK		
6	5	1	1	1		

- One of two freshmen on the roster for 2021-22
- Signed with Baylor in July ranked No. 58 overall and No. 10 at her position by ESPN HoopGurlz
- Won a state title in the shot put at Norman High School
- Made her Baylor debut at UT Arlington and scored her first points a game later
- Logged career highs across the board against Alcorn State

51



## Caitlin Bickle (BICK-uhl)

F • 6-0 • Sr. • Cave Creek, Ariz.

PTS	REB	AST	FG%	3FG%	FT%	MIN
SEA 8.0	4.3	1.7	.481	.194	.800	23.7
CAR 4.1	2.9	0.9	.491	.287	.758	12.7
PTS	REB	AST	STL	BLK		
13	11	6	4	3		

- Senior leader who's already announced she's coming back for a fifth year next season
- Quarterback on the floor for the Bears with her vocal leadership
- Had an all-around game at UTA with 7 pts, 8 rbs, 3 asts, 2 blks and a handful of charges taken
- Set multiple career highs with 13 points, 6 assists and a 9-10 showing at the FT line vs. Alcorn St.
- Graduated with a bachelor's degree in May. In grad school studying Sports Management