



GAME #16

15/16 BAYLOR (11-4, 1-2) VS.
NR/NR OKLAHOMA STATE (6-8, 1-4)January 19, 2022 • 7 p.m. (CT)
Waco, Texas
Ferrell CenterWATCH: Big 12 Now on ESPN+
Talent: John Morris (BBP), Jim Haller (Analyst)
LISTEN: ESPN Central Texas 1660 AM/92.3 FM
Talent: Derek Smith (BBP), Sophia Young-Malcolm (Analyst)SERIES MATCHUP
All-Time Series Baylor leads, 45-11
Waco 25-2
Stillwater 15-9
Neutral 5-0
First Meeting Baylor won in Waco, 82-71
1974-75
Last Meeting Baylor won in Waco, 70-51
Feb. 24, 2021

TEAM INFORMATION

#15/16 BAYLOR BEARS (11-4, 1-2)
Location: Waco, Texas Conference: Big 12
Head Coach: Nicki Collen (Marquette, 1998; 1st season)
Career Record: 11-4 BU Record: SameOKLAHOMA STATE COWGIRLS (6-8, 1-4)
Location: Stillwater, Okla.
Conference: Big 12
Head Coach: Jim Littell (Southwestern (KS), 1977; 11th season)

JANUARY 19, 2022

BEARS

SCHEDULE & RESULTS

DATE	BU	OPP	OPPONENT	TV	TIME/RESULT
N 9	7/8	-	TEXAS STATE	ESPN+	W, 77-70
N 11	7/8	-	at UT Arlington	ESPN+	W, 81-54
N 15	7/8	-	NEW ORLEANS	ESPN+	W, 78-39
N 21	6/8	3/5	at Maryland	Big Ten Network	L, 76-79
N 25	6/8	-	vs. Fordham !	FloHoops	W, 68-45
N 26	6/8	-	vs. Arizona State !	FloHoops	W, 62-52
N 27	6/8	-	vs. Houston !	FloHoops	W, 74-58
N30	5/8	-	MOREHEAD STATE	ESPN+	W, 73-28
D 4	5/7	-	MISSOURI ^	ESPN	W, 70-68
D 8	5/6	-	ALCORN STATE	ESPN+	W, 94-40
D 19	5/5	11/13	vs. Michigan \$	ESPN	L, 68-74 (OT)
D 29	10/10	-	NORTH TEXAS	ESPN+	W, 86-65
J 2	10/10	-	at Kansas State *	ESPN+	L, 68-59
J 12	14/1323/25	-	at Oklahoma *	Bally Sports Okla.	L, 83-77
J 16	14/13	-	at Kansas *	ESPN+	W, 82-79
J 19	15/16	-	OKLAHOMA STATE *	ESPN+	7PM
J 23	-	-	IOWA STATE *	ESPN2	2PM
J 26	-	-	at Texas Tech *	ESPN+	7PM
J 29	-	-	at West Virginia *	ESPN+	1PM
F 2	-	-	OKLAHOMA *	ESPN+	7PM
F 4	-	-	TEXAS *	TBA	TBA
F 6	-	-	at Texas *	ESPN2	3PM
F 9	-	-	KANSAS STATE *	ESPN+	7PM
F 12	-	-	WEST VIRGINIA *	ESPN+	5PM
F 16	-	-	TCU *	ESPN+	7PM
F 19	-	-	at TCU *	ESPN+	1PM
F 23	-	-	at Oklahoma State *	ESPN+	6:30PM
F 26	-	-	KANSAS *	ESPN+	2PM
F 28	-	-	at Iowa State *	ESPN2	6PM
M 6	-	-	TEXAS TECH *	ESPN+	2PM

* Big 12 Conference Game
! Cancun Challenge
\$ Hall of Fame Women's Showcase
^ SEC/Big 12 Challenge

STORY LINES

TIL THE CLOCK HITS ZERO

- Twenty seconds were left on the clock, and Kansas had a four-point lead inside Allen Fieldhouse. **Jordan Lewis** missed a runner, but **Sarah Andrews** corralled the offensive board and threw it to a wide open **Ja'Mee Andrews** on the perimeter who drained a 3-pointer to cut the KU lead to one with 12 seconds to go.
- **Lewis** then tipped KU's inbound pass. **Asberry** intercepted it and was fouled. The junior didn't flinch at the line, hitting nothing but nylon to give the Bears a one-point lead with eight seconds left.
- **Andrews** took over on the defensive end and forced a miss by a Jayhawk. **Nalyssa Smith** went up and got the defensive board and threw it to **Andrews** who was fouled. The sophomore then went 2-for-2 at the charity stripe which gave BU a three-point lead.
- In Baylor's first Big 12 win of the season, the Bears assisted on 24 of 29 buckets - led by **Lewis** with 8 and **Andrews** with 6 - and scored 18 second-chance points off 17 offensive rebounds.
- But it was the 14-for-29 display from the perimeter that stole the show. Baylor's 14 treys marked the second most in program history. **Andrews** and **Asberry** became the first BU teammates ever in program history to hit a minimum of six 3s each in the same game. Six makes for **Asberry** tied her career high, while **Andrews** set a new personal best with seven.

WALKING DOUBLE-DOUBLE

- **Nalyssa Smith** is third in the country with 12 double-doubles on the season.
- **Smith** is tied for fifth in program history alongside Kalani Brown (2015-19) with 40 career double-doubles.
- The senior is averaging 20.7 points and 12.1 rebounds per game which ranks No. 13 and No. 4 in the country, respectively.

LET IT FLY

- Baylor's program record for triples made came on Dec. 18, 2019 against Arkansas State when Juicy Landrum caught fire and set an NCAA record with 14 triples. Besides that record-setting performance, BU hadn't drained more than a dozen shots from deep since 2011.
- BU's record for 3-point attempts in a season came in 2013-14 when the Bears attempted 596 3s.
- From that season to 2020-21, Baylor made 10 or more 3-pointers in a game only five times across a total of 281 games (1.78 percent). BU has done so three times this season.
- Prior to this year, only 14 Bears had made six or more 3s in a game. Two of them had done it multiple times (Makenzie Robertson, 2012, 2014) and Jennifer King (1990, 1991, 1993).
- **Sarah Andrews** and **Ja'Mee Asberry** have already joined that elite club this season. **Andrews** went 6-for-8 against Morehead State and from deep and **Asberry** fired off 6-of-8 against Alcorn State. **Asberry** then went 6-for-11 at Kansas, and **Andrews** set a career-high with a 7-for-10 mark.

SIC'EM

BAYLOR RECORD & TITLES SINCE 2010-11

YEAR	OVERALL W-L	BIG 12 W-L	B12 REG	B12
			SEASON TITLE	TOURNAY TITLE
2010-11	34-3	15-1	✓	✓
2011-12*	40-0	18-0	✓	✓
2012-13	34-2	18-0	✓	✓
2013-14	32-5	16-2	✓	✓
2014-15	33-4	16-2	✓	✓
2015-16	36-2	17-1	✓	✓
2016-17	33-4	17-1	✓	✓
2017-18	33-2	18-0	✓	✓
2018-19*	37-1	18-0	✓	✓
2019-20	28-2	17-1	✓	✓
2020-21	28-3	17-1	✓	✓
TOTALS	368-28	187-9	11X	8X

PROJECTED
STARTING 5

#24 SARAH ANDREWS

PPG: 11.5 RPG: 3.3 APG: 3.7
.383/.443/.621

#21 JA'MEE ASBERRY

PPG: 9.9 RPG: 2.4 APG: 1.7
.92/.381/.833

#3 JORDAN LEWIS

PPG: 11.3 RPG: 3.3 APG: 5.1
.405/.279/.662

#1 NALYSSA SMITH

PPG: 20.7 RPG: 12.1 APG: 1.4
.538/.250/.733

#4 QUEEN EGB0

PPG: 9.6 RPG: 7.9 APG: 0.9
.488/.000/.722

OKLAHOMA ST. RECENT STARTING FIVE

14	Taylen Collins	8.7 PPG, 6.6 RPG, 0.7 APG
20	Macie James	3.9 PPG, 1.2 RPG, 0.3 APG
23	Lauren Fields	16.4 PPG, 4.4 RPG, 1.6 APG
25	Abbie Winchester	3.3 PPG, 3.9 RPG, 0.6 APG
11	N'Yah Boyd	5.5 PPG, 3.3 RPG, 3.6 APG

TV COVERAGE: Big 12 Now on ESPN+

SOCIAL MEDIA

@BaylorWBB • #SicEm

LIVE STATISTICS

BaylorStats.com

GAMEDAY CENTRAL

BaylorBears.com

BAYLOR ATHLETICS COMMUNICATIONS

KRISTA PIRTLE Associate Director
C: 254-447-8610 E: Krista_Pirtle@Baylor.edu

QUICK FACTS

GENERAL INFORMATION

Location:	Waco, Texas
Chartered:	1845, by the Republic of Texas
Enrollment:	19,297
President:	Dr. Linda Livingstone
Faculty Representative:	Dr. Carson Mencken
Athletic Director:	Mack B. Rhoades, IV
SWA:	Dawn Rogers
Sport Administrator:	Jovan Overshown
Conference:	Big 12
Nickname:	Bears
Colors:	Green (3435C) and Gold (1235C)
Arena (capacity):	Ferrell Center (10,288)
Ferrell Center Press Row:	254-652-3092
Athletic Department:	254-710-1234
Ticket Office:	254-710-1000

WOMEN'S BASKETBALL HISTORY

First Season:	1974-75
All-Time Record:	1,025-502 (.671) / 46th season
Ferrell Center Record:	414-98 (.808)
Overall NCAA Tournament Record:	53-16 (.779)
NCAA Tournament Appearances:	19
Final Four Appearances:	4 (2005, '10, '12, '19)
NCAA Championships:	3 (2005, 2012, 2019)
Last NCAA Appearance:	2021, NCAA Elite Eight (lost to No. 1 seed UConn, 69-67)
Postseason WNIT Appearances:	3
Last WNIT Appearance:	2003 (lost to Auburn, WNIT finals)
Conference Titles (Last):	12 (2021)
Conference Tournament Titles (Last):	11 (2021)

2020-21 REVIEW

2020-21 Overall Record:	28-3
2020-21 Big 12 Record (Finish):	17-1 (1st)
2020-21 Postseason:	Elite Eight

WOMEN'S BASKETBALL STAFF

Head Coach:	Nicki Collen (Marquette, 1998)
Record at Baylor:	11-4 1st season
Career Record:	11-4 1st season
Assistant Coach:	Tari Cummings
Assistant Coach:	Tony Greene
Assistant Coach:	Chloe Pavlech
Asst. AD of Operations:	Michael Motta
Asst. Dir. of Operations:	Micah Odom
Asst. AD of Player Dev.:	Sophia Young-Malcolm
Director of Video Operations:	Aaron Sternecker
Dir. of WBB Recruiting Content:	Carolina Escobedo
Athletic Trainer:	Chalisa Fonza
Strength & Conditioning Coach:	Jeremy Heffner
Athletics Communications:	Krista Pirtle

STORY LINES

- Andrews' seven 3s tied for third in program history. She is now one of six Bears in program history to hit a minimum of seven triples in a game.
- Andrews ranks 21st in the country with a 44.3 percentage from long range.

CLUB 1,000

- Ja'Mee Asberry hit the 1,000-career point mark at Oklahoma (1/12). She will be honored before the game on Wednesday.
- Queen Egbo is 11 points from reaching it as well.

QUICK HITS

- With its win over Missouri on Saturday, Baylor is 5-1 in Big 12/SEC Challenge games.
- For the first time since Dec. 19, 2020, Baylor held an opponent to under 30 total points (24, McNeese State) against Morehead State. It also marked the first time since that game that BU held an opponent to four single-digit scoring quarters.
- **Jordan Lewis** and **NaLyssa Smith**, along with 28 others, were named candidates for the 2021-22 Senior CLASS Award. The award recognizes a senior NCAA Division I player who demonstrates excellence in the community, the classroom, character and competition.
- **Smith** was named the Big 12 Player of the Week after averaging 19 points and 15.3 points per game through three games in Mexico.
- Baylor went 3-0 in the Cancun Challenge, playing three games in three days over Thanksgiving break. **Smith**, **Lewis** and **Queen Egbo** were named to the 2021 Cancun Challenge Mayan Division All-Tournament Team. **Smith** was also named the Division's MVP.
- No. 6 Baylor had a shot to send the game to overtime in the final seconds, but the 3-pointer from the left wing barely missed to give No. 3 Maryland the 79-76 win. The Terps led, 76-65, with 2:45 left in the game. **Lewis** answered with six-straight points, and **Smith** added a bucket with 1:30 to play. Then it was **Lewis** again with 38 seconds remaining with a 3-pointer to cut Maryland's lead to three. Baylor's defense got the stop without fouling on the other end to set up the chance for the tie.
- A second-half surge propelled the Bears to a 27-point win on the road over UT Arlington for BU's second game in three days to open the season. Baylor led the Lady Mavs by six at the half before holding the home team to a total of 22 points in the second half. **Smith** became the first Big 12 player of the season to record a 20/10 performance that game, while **Ja'Mee Asberry** hit five triples. **Caitlin Bickle** had an all-around game for Baylor as she finished with seven points, eight rebounds, three assists, two blocks and a couple of charges.
- BU opened the **Nicki Collen** era with a win over Texas State. **Collen** came to Baylor from the WNBA's Atlanta franchise, where she spent the last three seasons at the helm for the Dream. Her first year in Atlanta resulted in a 23-11 season in 2018, where she earned WNBA Coach of the Year honors and helped the team to the WNBA Playoff Semifinals.

THE BAYLOR BEARS REGIME

2019 NCAA CHAMPIONS

The 2018-19 Bears became just the third women's program in NCAA history to win three titles when Baylor beat Notre Dame 82-81 April 7 in Tampa, Fla. **Chloe Jackson's** go-ahead scoop layup with under five seconds left propelled her to NCAA Final Four Most Outstanding Player honors to go along with a team-high 26 points in the game. The Bears rode the wave of two All-American posts with **Kalani Brown** and **Lauren Cox** each earning multiple All-America honors. The pair led Baylor to its 10th regular-season and tournament championship in the Big 12 and **Kim Mulkey** was honored as national coach of the year by the USBWA, the *Associated Press* and the WBCA.

2012 NCAA CHAMPIONS

The 2011-12 Bear season was as perfect as it could be. En route to claiming its second NCAA Championship in seven years, Baylor ran the table, posting an unprecedented 40-0 mark and claiming both Big 12 Conference crowns. **Brittney Griner** and **Mulkey** swept player of the year and coach of the year honors, earning WBCA, USBWA, Associated Press, Naismith and Big 12 Conference recognition. Baylor was ranked No. 1 wire-to-wire in both polls and raced through conference play with a Big 12-record 18-0 mark. **Griner** and **Odyssey Sims** were named consensus All-Americans, while **Destiny Williams** was a WBCA All-America honorable mention honoree.

2005 NCAA CHAMPIONS

The squad posted a 33-3 record and claimed the Big 12 Conference title with a 14-2 mark. En route to the program's first NCAA Championship, the Bears defeated three No. 1 seeds. **Steffanie Blackmon** and **Sophia Young** were both named All-Americans. In addition to earning Big 12 Coach of the Year honors, **Mulkey** received the New York Athletic Club's prestigious Winged Foot Award.

NCAA TOURNAMENT STAPLE & 11+-YEAR DOMINANCE

- The Bears have made 17 consecutive NCAA Tournament appearances and 19 overall. Those appearances have resulted in three national championships (2005, 2012, 2019), four Final Fours (2005, 2010, 2012, 2019), 10 Elite Eights and 14 Sweet Sixteens.
- The Bears are 23-time Big 12 Champions—most in Big 12 history—capturing 11 consecutive regular season titles, 12 overall & 11 tournament titles.
- Baylor is 379-32 (.928) over the past 12 seasons while posting a 188-11 mark in Big 12 play and 27-1 (.964) in Big 12 Tournament play.
- 325 of Baylor's 379 wins since 2010-11 have been by 10 or more points, and only 19 times in that span has its winning margin been five or fewer points.

BIG 12 DYNASTY

- Baylor women's basketball has won a league-leading 23 Big 12 Conference titles, 12 regular season and 11 tournament championships.
- Baylor has run the table in the conference four times (2012, 2013, 2018, 2019). It has only happened six times in Big 12 history (Oklahoma: 16-0 in 2006; Nebraska: 16-0 in 2010).
- Baylor has advanced to the Big 12 Championship game 10 times in a row and 14 times in program history.
- The Bears have won nine of the last 10 Big 12 Championship titles, besting No. 17/20 West Virginia, 76-50, in the 2021 final.

HEAD COACH NICKI COLLEN • 1ST SEASON



Nicki Collen was introduced as the fifth Head Coach in Baylor women's basketball history on May 5, 2021.

Collen comes to Baylor from the WNBA's Atlanta franchise, where she spent the last three seasons at the helm for the Dream. Her rookie season in Atlanta resulted

in a 23-11 season in 2018, where she earned WNBA Coach of the Year honors and helped the franchise to the WNBA Playoff Semifinals.

Prior to her arrival in Atlanta, she spent two seasons under head coach Curt Miller of the Connecticut Sun, helping the franchise improve from fifth in the East Division to second from 2016 to 2017, respectively.

"I am thrilled to be the head coach at Baylor University. I believe it is the top job in the country for women's basketball," said Collen. "I am excited to begin working with this extremely talented team and I am grateful for the unwavering support of President Livingstone and Mack Rhoades. The success of this program speaks for itself, and I will begin working today to ensure Baylor women's basketball continues to be a program that excels at the highest levels."

Collen's collegiate coaching career spanned for nine seasons prior to her WNBA arrival. She spent two seasons as an assistant at Colorado State from 2000-2002, one season at Ball State from 2002-2003, one at Louisville from 2003-2004, three at Arkansas from 2011-2014 and two at Florida Gulf Coast from 2014-2016.

Her teams' combined record in nine seasons as an NCAA Division I assistant was 214-74, good for a .743 win percentage. As an assistant, Collen guided four different squads to the NCAA Tournament, reaching the second round in three of those seasons.

She spent six of her nine seasons as an assistant under her husband, Tom Collen's head-coaching tenures at Colorado State, Louisville and Arkansas. She also coached under Tracy Roller at Ball State and Karl Smesko at Florida Gulf Coast, who has the third-highest active winning percentage in NCAA Division I. Collen helped the FGCU program to a 64-9 record and the school's first NCAA Tournament win in her two-year tenure.

In her nine seasons at the collegiate level, Collen coached three All-Americans and saw three players selected in the WNBA Draft.

Collen's collegiate playing career began at Purdue in 1993-94, when the Boilermakers made an NCAA Final Four run with a 29-5 overall record and a 16-2 mark in the Big Ten. Her sophomore season, Purdue made another deep run with an Elite Eight appearance to go with a 24-8 overall record. She transferred to Marquette, where she tallied 421 assists in her final two seasons, averaging 7.0 per game in her last 60 collegiate games. She helped the Golden Eagles to two-straight NCAA Tournament appearances in 1997 and 1998.

Nicki and her husband Tom have three children, Connor, Reese and Logan.

WHAT THEY'RE SAYING ABOUT NICKI COLLEN

"Nicki Collen is a great hire for Baylor. A well-respected basketball mind in the WNBA, she has the knowledge and work-ethic to succeed at one of the top programs in women's college basketball.

Much like the woman who preceded her, Collen is a fiery competitor with a big personality. She is a nice fit for Baylor."

—Rebecca Lobo, ESPN Analyst, former NCAA Champion

"Nicki made an immediate impression as a head coach in the WNBA and it was a big challenge to coach against her. She likes an up tempo game, is innovative, and will bring a great style to Baylor Basketball. She is known for being direct and honest with her players in order to get the best from them on and off the court. I'm looking forward to watching her continue the great tradition of Baylor Basketball."

—Mike Thibault, Connecticut Sun Head Coach

"Congrats to the Baylor Administration on hiring Nicki Collen as their next basketball coach! Nicki is a detailed strategist and a relationship builder with a tireless work ethic. Coach Collen will bring more winning success to the student athletes on and off the court and the Lady Bear fans will be entertained with a fast paced offensive style of play! Buckle up for some intense, high octane offense!"

—Debbie Antonelli, ESPN Analyst

"Nicki has a brilliant basketball mind and a tremendous ability to connect with players. Nicki is high-energy, self-motivated, and ultra-competitive. She will do great things at Baylor."

—Karl Smesko, Florida Gulf Coast Head Coach

"Nicki Collen is one of the best basketball minds I've covered over the years. Her depth of knowledge and understanding of the x's and o's is second to none. Coupled with vast experience at various levels on the college and WNBA side, there will be more Big 12 Championships in Baylor's future."

—LaChina Robinson, ESPN Analyst

"The Lady Bears program is always near and dear, and I am excited to see what Coach Collen will do on the sidelines in Waco. Fans can expect some fiery defensive skills for Coach C!"

—Kalani Brown, Atlanta Dream player, former Lady Bear

"I was really looking forward to working with Coach Collen in the WNBA, and while I didn't get that chance, I couldn't be happier for her to join our alma mater and lead the Lady Bears. I am excited to see her in the green and gold."

—Odyssey Sims, Atlanta Dream player, former Bear

"Today is an exciting day for Baylor University and our women's basketball program. Nicki is a passionate leader of young women and an elite basketball mind and teacher of the game. She is a great mission fit who shares in our vision of Preparing Champions for Life by commanding excellence both on and off the court. Nicki's professional experience will be invaluable to developing players for the next level. Her addition sustains our commitment to the women's basketball program at the highest level. We welcome Nicki, her husband Tom and children, Connor, Reese and Logan, to the Baylor family."

—Mack Rhoades, Baylor Vice President & Director of Athletics

"We are excited to have Nicki lead our women's basketball program, and we look forward to welcoming her into the Baylor Family. I appreciate the work of Mack Rhoades and his team in identifying our next coach who understands our commitment to an elite program, aligns with Baylor's Christian mission and appreciates how we prepare champions for life at our University. After visiting personally with Coach Collen, I can't wait to see her and our student-athletes as they represent our great University both on the court and inside the classroom as well as throughout the Waco community."

—Baylor President Linda A. Livingstone, Ph.D

NICKI COLLEN

Education: Marquette, 1998, Mechanical Engineering

Family: Husband, Tom; Children, Connor, Reese & Logan

EXPERIENCE

Purdue (Player), 1993-95
 Marquette (Player), 1996-98
 BCM Alexandros, Greece (Player), 1998-99
 Colorado State (Assistant Coach), 2000-02
 Ball State (Assistant Coach), 2002-03
 Louisville (Assistant Coach), 2003-04
 Arkansas (Assistant Coach), 2011-14
 Florida Gulf Coast (Assistant Coach), 2014-16
 Connecticut Sun (WNBA, Assistant Coach), 2016-17
 Atlanta Dream (WNBA, Head Coach), 2018-20
 Baylor (Head Coach) 2021-present

HIGHLIGHTS

- 2018 WNBA Coach of the Year
- July 2018 WNBA Coach of the Month
- August 2018 WNBA Coach of the Month
- 2018 WNBA Semifinals
- 2017 WNBA Playoffs Second Round as Assistant
- Four NCAA Tournament Appearances as Assistant
- Three WNIT Appearances as Assistant

Collegiate All-Americans Coached

2002	Angie Gorton	Colorado State
2004	Sara Nord	Louisville
2016	Whitney Knight	Florida Gulf Coast

WNBA Draft Picks Coached in College

2003	Tamara Bowie	Washington
2012	C'eira Ricketts	Phoenix
2016	Whitney Knight	Los Angeles

WNBA All-Stars Coached

2017	Jasmine Thomas	Connecticut
2017	Alyssa Thomas	Connecticut
2018	Angel McCoughtry	Atlanta

HEAD WNBA COACHING YBY RECORD

Year	Franchise	Conference	OVRL	Postseason
2018	Atlanta	Eastern	23-11	WNBA Semifinals
2019	Atlanta	Eastern	8-26	
2020	Atlanta	Eastern	7-15	
Totals		3 Seasons	38-52	1 Appearance

ASST. WNBA COACHING YBY RECORD

Year	Franchise	Conference	OVRL	Postseason
2016	Connecticut	Eastern	14-20	
2017	Connecticut	Eastern	21-13	WNBA 2nd Round
Totals		2 Seasons	38-52	1 Appearance

ASST. COACHING YEAR-BY-YEAR RECORD

Year	School	Overall	Conf	Postseason
2000-01	Colorado State	25-7	10-4	NCAA-Second
2001-02	Colorado State	24-7	12-2	NCAA-First
2002-03	Ball State	18-8	12-4	WNIT-Second
2003-04	Louisville	20-10	11-3	WNIT-First
2011-12	Arkansas	24-9	10-6	NCAA-Second
2012-13	Arkansas	20-13	6-10	WNIT-Second
2013-14	Arkansas	19-11	6-10	
2014-15	Florida Gulf Coast	31-3	14-0	NCAA-Second
2015-16	Florida Gulf Coast	33-6	14-0	WNIT-Finals
Totals	9 Seasons	214-74	95-39	8 Appearances

HEAD COACHING YEAR-BY-YEAR RECORD

Year	School	Overall	Conf	Postseason
2021-22	Baylor	11-4		
Totals	1 Season	11-4		

ROSTER INFORMATION

PRONUNCIATION GUIDE

NaLyssa - NUH-lissa
 Egbo - egg-BOH
 Andrea - ANNE-dree-uh
 Katramados - cat-truh-MOD-os
 Ja'Mee - Jamie
 Kamaria - kuh-MARR-ee-uh
 Gillispie - guh-LESS-pe
 Bickle - BICK-uhl
 Collen - CALL-in
 Tari - TAR-ee
 Pavlech - PAV-lick
 Sternecker - STIR-nuh-ker
 Chalisa - shuh-LEE-suh
 Fonza - FAWN-sa

RETURNERS (5)

F - NaLyssa Smith *
 C - Queen Egbo *
 G - Jaden Owens
 G - Kamaria McDaniel
 G - Sarah Andrews
 F - Caitlin Bickle
 * Returning starter

NEWCOMERS (4)

G - Jordan Lewis (Alabama)
 G - Andrea Katramados
 G - Ja'Mee Asberry (Oklahoma St.)
 F - Kendra Gillispie

STARTERS LOST (3)

	PPG	RPG
G - Moon Ursin	12.6	6.6
G - Didi Richards	6.3	3.3
G - Trinity Oliver	4.4	3.1

TV/RADIO HEAD SHOTS



1 · NALYSSA SMITH

F · 6-4 · Sr.
 Converse, Texas



3 · JORDAN LEWIS

G · 5-7 · G-Tr.
 Windermere, Fla.



4 · QUEEN EGBO

C · 6-3 · Sr.
 Houston, Texas



10 · JADEN OWENS

G · 5-8 · Jr.
 Plano, Texas



11 · ANDREA KATRAMADOS

G · 5-10 · Fr.
 Belle Mead, N.J.



21 · JA'MEE ASBERRY

G · 5-5 · Jr. -TR
 Tulsa, Okla.



25 · KENDRA GILLISPIE

F · 6-2 · Fr.
 Oklahoma City, Okla.



22 · KAMARIA MCDANIEL

G · 5-10 · Sr.
 Inkster, Mich.



24 · SARAH ANDREWS

G · 5-6 · So.
 Irving, Texas



51 · CAITLIN BICKLE

F · 6-0 · Sr.
 Cave Creek, Ariz.



NICKI COLLEN

Head Coach
 1st Season



TARI CUMMINGS

Assistant Coach
 1st Season



TONY GREENE

Assistant Coach
 1st Season



CHLOE PAVLECH

Assistant Coach
 1st Season

AWARDS / NATIONAL & BIG 12 RANKINGS

2021-22 AWARDS

Player/Coach	Honor	Date
Nalyssa Smith	Preseason Big 12 Player of the Year	Oct. 6
Jordan Lewis	Preseason Big 12 Newcomer of the Year	Oct. 6
Nalyssa Smith	Preseason All-Big 12	Oct. 6
Queen Egbo	Preseason All-Big 12	Oct. 6
Jordan Lewis	Preseason All-Big 12 Honorable Mention	Oct. 6
Sarah Andrews	Preseason All-Big 12 Honorable Mention	Oct. 6
Nalyssa Smith	AP Preseason All-America	Oct. 26
Jordan Lewis	Lieberman Award Preseason Watch List	Oct. 27
Nalyssa Smith	McClain Award Preseason Watch List	Oct. 28
Queen Egbo	Leslie Award Preseason Watch List	Oct. 29
Nalyssa Smith	"Wade Watch" Preseason List	Nov. 9
Jordan Lewis	Wooden Award Top 50 Watch List	Nov. 9
Queen Egbo	Wooden Award Top 50 Watch List	Nov. 9
Nalyssa Smith	Wooden Award Top 50 Watch List	Nov. 9
Queen Egbo	Naismith Award Watch List	Nov. 9
Nalyssa Smith	Naismith Award Watch List	Nov. 9
Nalyssa Smith	Cancun Challenge Mayan MVP	Nov. 27
Nalyssa Smith	Cancun Challenge Mayan Team	Nov. 27
Jordan Lewis	Cancun Challenge Mayan Team	Nov. 27
Queen Egbo	Cancun Challenge Mayan Team	Nov. 27
Nalyssa Smith	Big 12 Player of the Week	Nov. 29
Jordan Lewis	Senior CLASS Award Candidate	Dec. 7
Nalyssa Smith	Senior CLASS Award Candidate	Dec. 7
Nalyssa Smith	Wooden Award Top 25 Watch List	Jan. 4

NATIONAL/BIG 12 RANKINGS

TEAM RANKINGS (NATIONAL TOP 10)

Cat.	Mark	NR	B12 R
------	------	----	-------

PLAYER RANKINGS (TOP 25)

Cat.	Player	Mark	NR	B12R
Defensive Rebs/Gm	Nalyssa Smith	8.3	7	1
Double Doubles	Nalyssa Smith	12	3	1
Field Goals Made	Nalyssa Smith	120	12	2
Final Points	Nalyssa Smith	310	17	3
Offensive Rebs/Gm	Nalyssa Smith	3.8	23	1
Points/Game	Nalyssa Smith	20.7	13	2
Rebounds	Nalyssa Smith	182	8	1
Rebounds/Game	Nalyssa Smith	12.1	4	1
3PT Percentage	Sarah Andrews	44.3	21	3

Div I Women, Longest Active Streaks of 20-Win Seasons

UConn	28	1993-94 - 2020-21
Baylor	21	2000-01 - 2020-21
Stanford	20	2001-02 - 2020-21
Maryland	17	2004-05 - 2020-21
Texas A&M	16	2005-06 - 2020-21
James Madison	15	2005-06 - 2019-20
		(13 wins in 2020-21)

BAYLOR LINEUP INFO / ADDITIONAL OPPONENT INFO

LINEUP INFO

2021-22 STARTING 5 COMBOS/RECORDS

Andrews, Lewis, Asberry, Smith, Egbo	11-4
--------------------------------------	------

CAREER RECORD AS A STARTER

Player	W-L
Nalyssa Smith	65-9
Queen Egbo	45-8
Caitlin Bickle	1-0
Sarah Andrews	11-5
Ja'Mee Asberry	11-4
Jordan Lewis	11-4

HEAD TO HEAD

BAYLOR.....	OKLAHOMA ST.
75.0	Points Per Game.....58.2
40.4	Rebounds Per Game.....36.9
405-916	Field Goals Made-Att..... 309-847
.442	Field Goal Percentage.....365
104-308	3-Point FG Made-Att..... .64-243
.338	3-Point Percentage.....263
211-297	Free Throws Made-Att..... 133-238
.710	Free Throw Percentage.....559
16.5	Assists Per Game.....11.5
13.8	Turnovers Per Game.....14.0
6.9	Steals Per Game.....9.6
3.7	Blocks Per Game.....4.1

ASSOCIATED PRESS POLL

(Released Jan. 17, 2022)

Rank	Team	Record	Points	Previous Rank
1	South Carolina (28)	17-1	747	1
2	Stanford	13-3	701	2
3	Louisville (2)	15-1	694	3
4	NC State	16-2	661	4
5	Tennessee	17-1	633	5
6	Indiana	14-2	607	6
7	Iowa State	16-1	542	9
8	Michigan	15-2	529	11
9	UConn	9-3	510	10
10	Arizona	12-2	466	7
11	LSU	17-2	464	12
12	Maryland	12-5	406	8
13	Georgia	13-3	310	17
14	Oklahoma	15-2	306	23
15	Baylor	11-4	295	14
16	Texas	12-3	295	13
17	BYU	14-1	275	18
18	Georgia Tech	13-4	263	15
19	Notre Dame	13-3	262	20
20	North Carolina	14-2	133	21
21	Duke	11-4	125	16
22	Colorado	13-1	119	22
23	Kentucky	8-5	83	19
24	FGCU	15-1	80	NR
25	Iowa	10-4	52	NR

Others receiving votes: Ohio State (47), Virginia Tech (40), Oregon (23), Kansas State (18), South Florida (14), UCF (9), Missouri (8), DePaul (5), Kansas (4), South Dakota (3).

AP POLL STREAK

Baylor women's basketball has been included in the Associated Press Top 25 Poll for 347 consecutive weeks.

USA TODAY/WBCA COACHES POLL

(Released Jan. 11, 2022)

Rank	Team	Record	Pts	1st	Prev
1	South Carolina	17-1	792	26	1
2	Louisville	15-1	765	6	2
3	Stanford	13-3	736	0	3
4	NC State	16-2	705	0	4
5	Indiana	14-2	661	0	5
6	Tennessee	17-1	648	0	6
7	Iowa State	16-1	591	0	9
8	Michigan	15-2	581	0	10
9	Arizona	12-2	511	0	7
10	LSU	17-2	473	0	14
11	Maryland	12-5	452	0	8
12	UConn	9-4	441	0	11
13	Georgia	14-3	411	0	15
14	Texas	12-3	336	0	12
15	BYU	14-1	324	0	17
16	Baylor	11-4	321	0	13
17	Notre Dame	13-3	285	0	19
18	Georgia Tech	13-4	226	0	16
19	Oklahoma	15-2	215	0	25
20	North Carolina	14-2	211	0	18
21	FGCU	15-1	147	0	23
22	Kentucky	8-5	123	0	20
23	Colorado	13-2	79	0	22
24	Duke	11-4	74	0	21
25	Ohio State	13-3	63	0	27

Others Receiving Votes: Iowa 59, Oregon 52, Central Florida 25, South Florida 24, Mississippi 21, Virginia Tech 10, Oregon State 9, Massachusetts 7, Missouri State 7, Texas A&M 6, Liberty 3, Mississippi State 3, Gonzaga 1, Kansas State 1, Nebraska 1.

BAYLOR'S RECORD WHEN...

	Big 12	All	Collen Era
Home	--	6-0	6-0
Away	1-2	2-3	2-3
Neutral	--	3-1	3-1
Leading at half	1-1	10-1	10-1
Trailing at half	0-1	1-3	1-3
Tied at half	--	--	--
Overtime	--	--	--
November games	--	7-1	7-1
December games	--	3-1	3-1
January games	1-2	1-2	1-2
February games	--	--	--
March games	--	--	--
April games	--	--	--
Television games	1-2	11-4	11-4
Versus ranked	0-1	0-3	0-3
Versus top 10	--	0-1	0-1

Field Goals

Shooting 20-29%	--	--	--
Shooting 30-39%	0-1	2-2	2-2
Shooting 40-49%	1-1	7-2	7-2
Shooting 50-59%	--	2-0	2-0
Shooting 60-69%	--	--	--
Higher than opponent	0-1	10-3	10-3
Lower than opponent	1-1	1-1	1-1

Three-Point Field Goals

Shooting 0-19%	--	1-0	1-0
Shooting 20-29%	--	3-2	3-2
Shooting 30-39%	0-2	2-2	2-2
Shooting 40-49%	1-0	5-0	5-0
Shooting 50-59%	--	--	--
Shooting 60-69%	--	--	--
Shooting 70-79%	--	--	--
Shooting 80-89%	--	--	--
Shooting 90-99%	--	--	--
Shooting 100%	--	--	--
Higher than opponent	--	7-0	7-0
Lower than opponent	1-2	4-4	4-4
Same as opponent	--	--	--

Free Throws

Shooting 30-39%	--	--	--
Shooting 40-49%	--	--	--
Shooting 50-59%	--	1-0	1-0
Shooting 60-69%	1-1	4-1	4-1
Shooting 70-79%	0-1	4-1	4-1
Shooting 80-89%	--	2-2	2-2
Shooting 90-100%	--	--	--
Higher than opponent	0-1	2-1	2-1
Lower than opponent	1-1	9-3	9-3
Same as opponent	--	--	--

Outrebounding opp.	0-1	9-2	9-2
Outrebounded by opp.	1-1	2-2	2-2
Rebounds equal	--	--	--

Games decided by

1-5 points	1-0	2-1	2-1
6-10 points	0-2	2-3	2-3
11-15 points	--	--	--
16-24 points	--	3-0	3-0
25+ points	--	4-0	4-0

MILESTONES. TEAM NOTES. RANKINGS

INDIVIDUAL NOTES

- **NaLyssa Smith** surpassed the 1,500 career-points mark against Michigan on Dec. 19. The senior currently has 1,586 career points (No. 13 in program history) to go with 877 rebounds Only six Bears in Baylor women's basketball history have 1,500+ career points and 1,000+ career rebounds.
- **Jordan Lewis** is No. 16 in the country among active DI student-athletes with 1,751 career points. She's second with 587 career assists.

TEAM NOTES

- Baylor has out-rebounded its opponents in 171 of the last 182 games.
- Baylor is 250-1 all-time when shooting 50 percent or better from the field and 40-0 when shooting 60 percent or higher.
- 35 of Baylor's wins since 2010-11 have been by 10 or more points, and only 19 times in that span has its winning margin been five or fewer points.
- Prior to Jan 16's loss to Iowa State, Baylor's last blemish at home came Feb. 6, 2017 vs. Texas (85-79). The Ferrell Center streak reached 61 games, the 10th-longest home-win streak in NCAA history and the second best in school history (68).
- Baylor's last non-conference loss at home came Jan. 13, 2014 vs. UConn (66-55). Since then, the Bears have won 66-straight non-conference home games at the Ferrell Center including 15 NCAA Tournament contests.
- Since the 2010-11 season, Baylor is 42-4 vs. Top 25 opponents at the Ferrell Center.
- Baylor is 324-99 (.769) vs. Big 12 opponents in the regular season all-time.
- Baylor has been ranked in the Associated Press Top 25 for 344 straight weeks.

- Baylor has been ranked in the USA Today/WBCA Top 25 for 324 straight weeks.

2021-22 GAME-BY-GAME SPECIALTY STATISTICS

GAME (BU/OPP)	PAINT	OFF T/O	2ND CH.	FAST BR.	BENCH
Texas State	42/30	22/14	9/12	13/15	13/28
at UT Arlington	36/30	22/9	17/12	9/2	10/16
New Orleans	42/8	27/8	18/6	11/2	18/9
at Maryland	34/34	13/17	7/17	13/8	4/5
vs. Fordham	24/14	12/10	14/10	12/4	12/7
vs. Arizona State	14/5	36/18	14/11	12/13	7/15
vs. Houston	26/22	14/16	16/10	12/9	11/12
Morehead State	24/10	15/7	11/4	10/3	15/7
Missouri	28/30	10/11	10/9	13/3	15/14
Alcorn State	34/12	25/7	16/6	28/0	18/18
vs. Michigan	28/38	14/21	3/29	18/8	5/13
North Texas	32/20	19/8	15/5	6/7	19/9
at Kansas State	24/32	16/18	11/7	6/0	10/12
at Oklahoma	40/26	9/25	17/4	6/15	11/33
at Kansas	22/20	13/7	18/4	8/2	11/9

2021-22 BAYLOR WEEKLY NATIONAL RANKINGS

ASSOCIATED PRESS

Week	Date	Rank
Pre	10/27	7
1	11/15	6
2	11/22	6
3	11/29	5
4	12/6	5
5	12/13	5
6	12/20	10
7	12/27	10
8	1/3	14
9	1/10	14
10	1/17	15

USA TODAY/COACHES

Week	Date	Rank
Pre	11/3	8
2	11/22	8
3	11/30	7
4	12/7	6
5	12/14	5
6	12/21	10
7	12/28	10
8	1/4	13
9	1/11	13
10	1/18	16

THE LAST TIME A BAYLOR TEAM ...

Scored 120 Points.....	136, vs. Northwestern State (Dec. 18, 2020)
Scored Fewer than 50 Points.....	45 at Oklahoma State (Dec. 30, 2015)
Won by 100 Points.....	140-32 vs. Winthrop (Dec. 15, 2016)*
Won by 70 Points.....	93 vs. McNeese State (Dec. 19, 2020)
Shot 65 pct from the floor.....	67.9 (57-84) vs. Northwestern State (Dec. 18, 2020)
Shot 60 pct from the floor.....	62.3 (48-77) vs. McNeese State (Dec. 19, 2020)
Shot less than 35 pct from the floor.....	34.8% (24-69) vs. No. 5/6 South Carolina (Nov. 30, 2019)
Shot 70 pct from 3-point range.....	71.4% (5-7) vs. Houston Baptist (Nov. 14, 2019)
Shot less than 20 pct from 3-point range.....	16.0 (4-25) vs. Texas State (Nov. 9, 2021)
Made 10 3-point field goals.....	14 at Kansas (Jan. 16, 2022)
Shot 100 percent from the FT line.....	14-14, vs. TCU (March 12, 2021)
Shot less than 50 pct from the FT line.....	45.5% (5-11) vs. Iowa State (Jan. 16, 2021)
Had 70 Rebounds.....	75 vs. UTRGV (Dec. 31, 2018)*
Had 60 Rebounds.....	61 vs. Oklahoma State (Jan. 12, 2020)
Had 30 Offensive Rebounds.....	31 vs. UTRGV (Dec. 31, 2018)
Had 40 Assists.....	45 vs. Northwestern State (Dec. 18, 2020)*
Had 30 Assists.....	33 vs. McNeese State (Dec. 19, 2020)
Had 25 Turnovers.....	25 vs. Syracuse (Dec. 19, 2014)
Had less than 5 Turnovers.....	2 vs. Texas (Feb. 1, 2014)*
Had 20 Steals.....	25 vs. McNeese State (Dec. 19, 2020)
Had 17 Blocked Shots.....	17 vs. Winthrop (Dec. 15, 2016)*
Had 15 Blocked Shots.....	15 vs. Kansas (Jan. 1, 2017)
Had two 30-point scorers.....	Nina Davis (32), Odyssey Sims (31) vs. Western Kentucky (March 22, 2014)
Had three 20-point scorers.....	NaLyssa Smith (30), Queen Egbo (21), Hannah Gusters (22) vs. Northwestern State (Dec. 18, 2020)
Had eight double-figure scorers.....	NaLyssa Smith (21), DiDi Richards (15), Juicy Landrum (14), Queen Egbo (14), Erin DeGrate (13), Lauren Cox (13), Te'a Cooper (12), Moon Ursin (10) * vs. Grambling State (Nov. 8, 2019)
Had seven double-figure scorers.....	NaLyssa Smith (21), DiDi Richards (15), Juicy Landrum (14), Queen Egbo (14), Erin DeGrate (13), Lauren Cox (13), Te'a Cooper (12), Moon Ursin (10) vs. Grambling State (Nov. 8, 2019)
Had no players score in double figures.....	at Texas Tech (Feb. 29, 2000)
Had three double-figure rebounders.....	Kalani Brown (13), NaLyssa Smith (11), Queen Egbo (10) vs. Oklahoma State (Mar. 2, 2019)
Had three with double-doubles.....	Nina Davis (18p/14r), Kalani Brown (14p/10r), Kristy Wallace (12p/10r) vs. Texas Tech (March 4, 2017)
Had two with double figure assists.....	Niya Johnson (14a), Odyssey Sims (13a) vs. San Jose State (Dec. 3, 2013)
Scored 70 points or more in the first half.....	74 vs. Northwestern State (Dec. 18, 2020)
Scored 60 points or more in first half.....	63 vs. Oklahoma (Feb. 22, 2020)
Scored 60 pts or more in second half.....	65 vs. McNeese State (Dec. 19, 2020)
Scored 20 points or less in first half.....	20 vs. Fordham (Nov. 25, 2021)
Scored 20 points or less in second half.....	19 vs. Kansas State (Jan. 22, 2014)
Failed to make a 3-point field goal.....	.000 (0-11) at South Florida (Dec. 1, 2020)
Defeated a top 10 team.....	74-58 at #1/1 Connecticut (Jan. 9, 2020)
Lost to a ranked team.....	83-77 at No. 23 Oklahoma (Jan. 12, 2022)
Lost to an unranked team.....	68-59 at Kansas State (Jan. 2, 2022)
Lost to an unranked team at home.....	75-71 vs. Iowa State (Jan. 16, 2021)
Lost a regular season, non-conference game.....	74-68 (OT) vs. 11/13 Michigan (Dec. 19, 2021)
Lost a regular season, non-conference home game.....	66-55 vs. UConn (Jan. 13, 2014)
Won an overtime game.....	78-75 vs. Michigan (March 27, 2021)
Lost an overtime game.....	74-68 (OT) vs. 11/13 Michigan (Dec. 19, 2021)
Won a double-overtime game.....	95-83 vs. Iowa State (Feb. 1, 2003)
Lost a double-overtime game.....	never
Won a triple-overtime game.....	never
Lost a triple-overtime game.....	103-99 at Nebraska (Jan. 12, 2005)
Won a quadruple-overtime game.....	never
Lost a quadruple-overtime game.....	133-130 4OT vs. #5 Kentucky (Dec. 6, 2013)

THE LAST TIME A BAYLOR INDIVIDUAL...

Recorded a Triple-Double (Pts/Reb/Ast).....	Alexis Jones (24p/12r/10a) vs. #20/20 Oklahoma (Jan. 29, 2017)
Recorded a Triple-Double (Pts/Reb/Blk).....	Brittney Griner (28p/10r/10bl) at West Virginia (March 2, 2013)
Recorded a Double-Double (Pts/Ast).....	Jordyn Oliver (12p/10a) vs. Northwestern State (Dec. 18, 2020)
Recorded a Double-Double (Reb/Ast).....	Niya Johnson (10r/19a) vs. McNeese State (Dec. 13, 2015)
Recorded a Double-Double (Pts/Blk).....	Brittney Griner (28p/10bl) at West Virginia (March 2, 2013)
Had a 20/10 Performance (Pts/Ast).....	Te'a Cooper (23p/10a) vs. Houston Baptist (Nov. 14, 2019)
Had a 30/10 Performance (Pts/Reb).....	NaLyssa Smith (30p/15r) at Maryland (Nov. 21, 2021)
Had a 20/20 Performance (Pts/Reb).....	Kalani Brown (20p/23r) at #21/22 Oklahoma State (Feb. 13, 2018)
Had a 30/20 Performance (Pts/Reb).....	Brittney Griner (33p/22r) vs. #23 Florida State (March 26, 2013)
Had a 40/20 Performance (Pts/Reb).....	Danielle Crockm (41p/22r) at Texas A&M (Jan. 20, 2001)
Scored 50 Points.....	Brittney Griner (50) vs. Kansas State (March 4, 2013)
Scored 40 Points.....	Juicy Landrum (42) vs. Arkansas State (Dec. 18, 2019)
Scored 30 Points.....	NaLyssa Smith (30) at Oklahoma (Jan. 12, 2022)
Had 20 Rebounds.....	Kalani Brown (23) at #21/22 Oklahoma State (Feb. 13, 2018)
Had 10 Assists.....	Didi Richards (11) vs. Oklahoma State (Feb. 24, 2021)
Had 5 Steals.....	Jordan Lewis (5) at Kansas State (Jan. 2, 2022)
Had 5 Blocked Shots.....	Queen Egbo (7) vs. Virginia Tech (March 23, 2021)
Had 10 Blocked Shots.....	Brittney Griner (10) at West Virginia (March 2, 2013)

THE LAST TIME A BAYLOR OPPONENT...

Scored 100 Points.....	133 by #5 Kentucky (Dec. 6, 2013)
Scored 90 Points.....	133 by #5 Kentucky (Dec. 6, 2013)
Scored Fewer than 30 Points.....	28 by Morehead State (Nov. 30, 2013)
Won by 30 Points.....	31 by LSU (Jan. 30, 2006)
Shot 65 pct from the floor.....	66.7 (40-67) by Iowa State (Feb. 26, 2000)
Shot 60 pct from the floor.....	61.0 (36-59) by Oklahoma (Jan. 15, 2000)
Shot 50 pct from the floor.....	50.0% by Kansas (Jan. 16, 2022)
Shot less than 25 pct from the floor.....	20.0% by Morehead State (Nov. 30, 2021)
Shot 50 pct from 3-point range.....	52.6 % (10-19) by Kansas (Jan. 16, 2022)
Shot less than 20 pct from 3-point range.....	14.3 % by Morehead State (Nov. 30, 2021)
Made 10 3-point field goals.....	(10-19) by Kansas (Jan. 16, 2022)
Shot less than 50 pct from the FT line.....	44.4% (8-18) by Jackson State (March 21, 2021)
Had 50 Rebounds.....	50 by Michigan (Dec. 19, 2021)
Had 20 Offensive Rebounds.....	26 by #18/19 Texas (Feb. 25, 2019)
Had 20 Assists.....	21 at #8/7 UCLA (Nov. 18, 2017)
Had 20 Turnovers.....	23 by Kansas State (Jan. 2, 2022)
Had 7 or Fewer Turnovers.....	7 by Texas (Jan. 31, 2020)
Had 10 Steals.....	10 by Oklahoma (Jan. 12, 2022)
Had 10 Blocked Shots.....	10 by Oklahoma (Feb. 21, 2009)
Had two 20-point scorers.....	Holly Kersgieter (23), Ioanna Chatzileonti (20), Zakayah Franklin (20) at Kansas (Jan. 16, 2022)
Had two double-figure rebounders.....	Mercedes Russell (12), Jaime Nared (11) by #22/25 Tennessee (Dec. 4, 2016)
Had no players in double figures.....	Alcorn State (Dec. 8, 2021)
Scored 50 points or more in first half.....	50 by Texas Tech (Feb. 29, 2000)
Scored 50 points or more in the second half.....	52 by #6/6 Texas (Feb. 19, 2018)
Scored 20 points or less in first half.....	18 by Alcorn State (Dec. 8, 2021)
Scored 20 points or less in second half.....	11 by Morehead State (Nov. 30, 2021)
Failed to make a 3-point field goal.....	(0-13) by Texas Tech (Feb. 10, 2021)

THE LAST TIME AN OPPONENT INDIVIDUAL...

Had a 30/10 Performance (Pts/Reb).....	Ayoka Lee (32 pts, 10 reb), at Kansas State (Jan. 2, 2022)
Had a 20/10 Performance (Pts/Reb).....	Aijha Blackwell (20 pts, 16 reb), Missouri (Dec. 4, 2021)
Scored 30 Points.....	32 by Ayoka Lee, Kansas State (Jan. 2, 2022)
Scored 40 Points.....	41 by Morgan William, #7/7 Mississippi State (March 26, 2017)
Had 20 Rebounds.....	26 by Courtney Paris, Oklahoma (March 11, 2009)
Had 15 Rebounds.....	16 by Aijha Blackwell, Missouri (Dec. 4, 2021)
Had 10 Assists.....	13 by Jordin Canada, No. 8/7 UCLA (Nov. 18, 2017)
Had 5 Steals.....	5 by Lauren Fields, Oklahoma State (Feb. 24, 2021)
Had 5 Blocked Shots.....	5 by Kristin Scott, Iowa State (Jan. 31, 2021)

* School record

^ NCAA record

+ Opponent record



NALYSSA SMITH

MAJOR

Communication Studies

CAREER HIGHS

Points
30 vs. Northwestern St. [12/18/20]
vs. Oklahoma State [1/12/20]
at Maryland (11/21/22)
at Oklahoma (1/12/22)

Rebounds
19 vs. Houston (11/27/21)

Assists
4, vs. Oklahoma, [1/23/21]

Blocks
4, vs. Central Arkansas [11/25/20]

Steals
3, vs. Southern [12/16/20];
vs. Lamar [11/21/19]
at Oklahoma (1/12/22)

Field Goals
12 at Oklahoma State [1/12/20]
at Oklahoma (1/12/22)

Field Goal Attempts
22 at Kansas (1/16/22)
at Texas Tech [2/10/21];
vs. South Carolina [11/30/19]

3-Point Field Goals
2 at Texas [3/1/21]

3-Point Field Goal Attempts
3, vs. Central Arkansas [11/25/20]

Free Throws
13 vs. Central Arkansas [11/25/20]

Free Throw Attempts
15 vs. Central Arkansas [11/25/20]

Minutes Played
45, vs. Michigan [3/27/21]

MISCELLANEOUS

Double-Figure Scoring 80
Double-Figure Rebounds 40
Double-Doubles 40
Led Team in Scoring 32
Led Team in Rebounds 31
Led Team in Blocks 8
Led Team in Steals 7
20+ Point Games 27

#1 • F • 6-4 • SR. • 3L • CONVERSE, TEXAS (EAST CENTRAL HS)

2021-22 AWARDS

- SENIOR CLASS AWARD NOMINEE (12/7)
- BIG 12 PLAYER OF THE WEEK (11/29)
- CUNCUN CHALLENGE MAYAN DIVISION MVP / ALL-TOURNAMENT TEAM
- PRESEASON BIG 12 PLAYER OF THE YEAR
- ASSOCIATED PRESS PRESEASON ALL-AMERICAN
- KATRINA MCCLAIN AWARD WATCH LIST
- "WADE WATCH" PRESEASON LIST
- WOODEN AWARD TOP 50 WATCH LIST
- NAISMITH PRESEASON WATCH LIST
- WOODEN AWARD TOP 25 WATCH LIST

- Logged her 100th career game in a Baylor uniform against New Orleans
- Put up a 30-piece at No. 3 Maryland, matching her career high, as she took over in the second half to get the Bears back in the ball game. Smith also pulled down 15 boards against the Terrapins to give her a 30/15 game.
- Nearly had a 20-20 performance against Houston with 21 points and a career-high 19 rebounds. Finished with 18 and 10 in the second half alone (14 minutes).
- Third in the country in double-doubles.
- Scored 30 points at Oklahoma (1/12)

2021-22 NOTABLES

- Became the first player in the Big 12 this season with a 20+ point, 10+ rebound game with 21 points and 16 rebounds at UT Arlington (11/11)

2021-22 GAME-BY-GAME STATISTICS

Opponent	Date	GS	MIN	Total		3-Pointers		Free throws		Rebounds				PF	A	TO	BLK	STL	PTS	AVG
				FG-FGA	PCT	3FG-3FGA	PCT	FT-FTA	PCT	OFF	DEF	TOT	AVG							
Texas St.	11/09/2021	*	34:20	8-17	.471	0-2	.000	7-9	.778	3	4	7	7.0	3	0	5	2	1	23	23.0
at UT Arlington	11/11/2021	*	29:00	8-9	.889	0-0	.000	5-5	1.000	5	11	16	11.5	3	1	5	2	2	21	22.0
New Orleans	11/15/2021	*	28:58	3-5	.600	0-0	.000	7-7	1.000	3	7	10	11.0	2	1	3	1	0	13	19.0
at Maryland	11/21/2021	*	37:29	14-25	.560	1-3	.333	1-1	1.000	5	10	15	12.0	3	1	2	0	0	30	21.8
vs Fordham	11/25/2021	*	32:44	8-16	.500	0-1	.000	3-5	.600	5	10	15	12.6	3	1	6	0	1	19	21.2
vs Arizona St.	11/26/2021	*	27:07	7-14	.500	0-0	.000	3-4	.750	3	9	12	12.5	4	0	2	2	1	17	20.5
vs Houston	11/27/2021	*	27:36	6-14	.429	1-1	1.000	8-13	.615	6	13	19	13.4	1	1	0	2	0	21	20.6
Morehead St.	11/30/2021	*	26:38	3-7	.429	0-1	.000	4-4	1.000	2	9	11	13.1	2	0	4	1	1	10	19.3
Missouri	12/04/2021	*	38:15	9-13	.692	0-0	.000	7-10	.700	4	13	17	13.6	2	3	2	0	1	25	19.9
Alcorn	12/08/2021	*	20:01	10-13	.769	1-2	.500	4-6	.667	2	8	10	13.2	0	3	0	1	1	25	20.4
vs Michigan	12/19/2021	*	42:00	8-15	.533	1-2	.500	4-6	.667	2	12	14	13.3	2	0	4	3	1	21	20.5
North Texas	12/29/2021	*	26:38	14-21	.667	0-2	.000	0-0	.000	4	7	11	13.1	2	3	0	0	1	28	21.1
at Kansas St.	01/02/2022	*	40:00	4-12	.333	0-0	.000	4-6	.667	4	3	7	12.6	4	3	1	2	2	12	20.4
at Oklahoma	01/12/2022	*	37:49	12-20	.600	0-1	.000	6-8	.750	3	5	8	12.3	3	2	3	0	3	30	21.1
at Kansas	01/16/2022	*	31:58	6-22	.273	0-1	.000	3-6	.500	6	4	10	12.1	3	2	3	0	0	15	20.7
Totals		15	480:33	120-223	.538	4-16	.250	66-90	.733	57	125	182	12.1	37	21	40	16	15	310	20.7

SMITH'S CAREER STATISTICS

				Field Goals		3-Point		F-Throws		Rebounds									Scoring	
SEASON	TEAM	GP-GS	MIN/AVG	FG-FGA	FG%	3FG-3FGA	3FG%	FT-FTA	FT%	OFF	DEF	TOT	AVG	PF-FO	A	TO	BLK	STL	PTS	AVG
2018-19	Baylor	38-1	582/15.3	134-247	.543	1-9	.111	49-72	.681	73	120	193	5.1	69-1	15	34	15	15	318	8.4
2019-20	Baylor	28-27	677/24.2	154-263	.586	0-4	.000	91-122	.746	79	146	225	8.0	63-1	17	45	16	25	399	14.3
2020-21	Baylor	31-31	944/30.4	217-387	.561	3-14	.214	122-154	.792	100	177	277	8.9	71-0	36	86	26	38	559	18.0
2021-22	Baylor	15-15	481/32.0	120-223	.538	4-16	.250	66-90	.733	57	125	182	12.1	37-0	21	40	16	15	310	20.7
TOTAL		112-74	2683/24.0	625-1120	.558	8-43	.186	328-438	.749	309	568	877	7.8	240-2	89	205	73	93	1586	14.2



JORDAN LEWIS

MAJOR

Undecided

CAREER HIGHS

Points	32, vs. North Carolina (3/22/21) *
Rebounds	11, three times, last at OU (1/12)
Assists	9, at Texas A&M (2/27/20) *
Blocks	2, at SMU (11/15/18) *
Steals	6, at Georgia Southern (11/19/17) *
Field Goals	11, at North Carolina (3/22/21) *
Field Goal Attempts	21, 3X last vs. UNC (3/22/21) *
3-Point Field Goals	6, at Tulane (11/24/19) *
3-Point Field Goal Attempts	10, Texas A&M (2/25/21) *
Free Throws	13, Ole Miss (2/11/21) *
Free Throw Attempts	14, twice last Ole Miss (2/11/21) *
Minutes Played	45, vs. Michigan (12/19/21)

MISCELLANEOUS

Double-Figure Scoring	87
Double-Figure Rebounds	4
Double-Doubles	3
20+ Point Games	19
30+ Point Games	1

* Accomplished at Alabama

#3 • G • 5-7 • GS. • TR • WINDERMERE, FLA. (LAKE HIGHLAND PREP / ALABAMA)

2021-22 AWARDS

- SENIOR CLASS AWARD NOMINEE (12/7)
- CANCUN CHALLENGE MAYAN DIVISION ALL-TOURNAMENT TEAM
- PRESEASON BIG 12 NEWCOMER OF THE YEAR
- NANCY LIEBERMAN PRESEASON WATCH LIST
- WOODEN AWARD TOP 50 WATCH LIST

2021-22 NOTABLES

- Made her Baylor debut vs. Texas State (11/9)
- Went to work against No. 3 Maryland as she finished with a season-high 29 points, including a 3-pointer that cut the Terrapin lead to three with a minute to play.
- Among active Division I WBB players, ranks No. 14 in career points and No. 3 in career assists
- Logged a career-high 45 minutes vs. Michigan (12/19)
- Tied her career high with 11 rebounds at Oklahoma (1/12)
- Dished out a season-high eight assists at Kansas (1/16)

2021-22 GAME-BY-GAME STATISTICS

Opponent	Date	GS	MIN	Total		3-Pointers		Free throws		Rebounds				PF	A	TO	BLK	STL	PTS	AVG
				FG-FGA	PCT	3FG-3FGA	PCT	FT-FTA	PCT	OFF	DEF	TOT	AVG							
Texas St.	11/09/2021	*	32:12	4-9	.444	1-4	.250	5-9	.556	0	3	3	3.0	4	7	1	0	1	14	14.0
at UT Arlington	11/11/2021	*	31:02	4-9	.444	3-7	.429	1-2	.500	0	2	2	2.5	2	4	1	0	0	12	13.0
New Orleans	11/15/2021	*	28:27	3-7	.429	2-5	.400	0-2	.000	0	2	2	2.3	1	4	3	0	1	8	11.3
at Maryland	11/21/2021	*	35:18	12-18	.667	3-7	.429	2-2	1.000	1	4	5	3.0	3	2	4	0	0	29	15.8
vs Fordham	11/25/2021	*	32:32	6-9	.667	1-3	.333	2-4	.500	1	2	3	3.0	2	6	1	0	2	15	15.6
vs Arizona St.	11/26/2021	*	33:06	3-8	.375	0-2	.000	9-12	.750	2	2	4	3.2	2	5	3	0	0	15	15.5
vs Houston	11/27/2021	*	27:51	2-6	.333	1-3	.333	2-2	1.000	0	2	2	3.0	1	4	1	0	3	7	14.3
Morehead St.	11/30/2021	*	20:47	1-4	.250	1-4	.250	0-2	.000	0	1	1	2.8	1	4	3	0	0	3	12.9
Missouri	12/04/2021	*	38:15	2-10	.200	0-3	.000	5-8	.625	1	1	2	2.7	2	7	0	1	1	9	12.4
Alcorn	12/08/2021	*	19:01	3-6	.500	2-5	.400	0-0	.000	0	2	2	2.6	1	3	1	0	0	8	12.0
vs Michigan	12/19/2021	*	44:60	2-13	.154	0-5	.000	11-11	1.000	3	2	5	2.8	3	7	3	0	4	15	12.3
North Texas	12/29/2021	*	32:42	5-9	.556	2-5	.400	1-2	.500	0	1	1	2.7	4	7	1	0	1	13	12.3
at Kansas St.	01/02/2022	*	36:21	4-10	.400	1-6	.167	5-8	.625	1	4	5	2.8	4	4	4	0	5	14	12.5
at Oklahoma	01/12/2022	*	37:29	2-6	.333	2-5	.400	1-2	.500	1	10	11	3.4	4	5	5	0	0	7	12.1
at Kansas	01/16/2022	*	31:34	0-7	.000	0-4	.000	1-2	.500	0	1	1	3.3	3	8	2	0	2	1	11.3
Totals		15	481:37	53-131	.405	19-68	.279	45-68	.662	10	39	49	3.3	37	77	33	1	20	170	11.3

LEWIS'S CAREER STATISTICS

				Field Goals		3-Point		F-Throws		Rebounds										Scoring	
SEASON	TEAM	GP-GS	MIN/AVG	FG-FGA	FG%	3FG-3FGA	3FG%	FT-FTA	FT%	OFF	DEF	TOT	AVG	PF-FO	A	TO	BLK	STL	PTS	AVG	
2016-17	Bama	36-36	1175/32.6	106-324	.327	37-131	.282	102-153	.667	37	104	141	3.9	73-3	154	117	1	52	351	9.8	
2017-18	Bama	31-31	1029/33.2	87-274	.318	29-88	.330	99-135	.733	18	102	120	3.9	53-0	108	71	1	35	302	9.7	
2018-19	Bama	8-8	243/30.4	32-76	.421	10-33	.303	34-47	.723	5	27	32	4.0	19-0	25	20	0	10	108	13.5	
2019-20	Bama	30-30	1006/33.5	120-308	.390	44-127	.346	110-152	.724	33	103	136	4.5	53-0	117	80	2	35	394	13.1	
2020-21	Bama	25-25	894/35.7	126-309	.408	47-126	.373	127-162	.784	27	79	106	4.2	49-0	106	70	4	27	426	17.0	
2021-22	Baylor	15-15	482/32.1	53-131	.405	19-68	.279	45-68	.662	10	39	49	3.3	37-0	77	33	1	20	170	11.3	
TOTAL FOR Baylor		15-15	482/32.1	53-131	.405	19-68	.279	45-68	.662	10	39	49	3.3	37-0	77	33	1	20	170	11.3	
TOTAL		145-145	4829/33.3	524-1422	.368	186-573	.325	517-717	.721	130	454	584	4.0	284-3	587	391	9	179	1751	12.1	



QUEEN EGBO

MAJOR

Health, Kinesiology & Leisure Studies

CAREER HIGHS

Points	26 vs. West Virginia (3/8/21)
Rebounds	16, vs. Morehead State (11/30/21)
Assists	4, K-State (2/27/21)
Blocks	6, vs. TCU (3/12/21)
Steals	4, vs. McNeese State (12/19/20)
Field Goals	11, vs. New Orleans (11/15/21)
Field Goal Attempts	19, at South Florida (12/1/20)
3-Point Field Goals	n/a
3-Point Field Goal Attempts	2 vs. Arkansas St. (12/18/19)
Free Throws	7 vs. UTRGV (12/31/18)
Free Throw Attempts	12 vs. UTRGV (12/31/18)
Minutes Played	38 at Texas (3/1/21)

MISCELLANEOUS

Double-Figure Scoring	52
Double-Figure Rebounding	30
Double-Doubles	25
Led Team in Blocks	26
Led Team in Rebounds	24
Led Team in Steals	11
Led Team in Scoring	8
20-Point Games	6

#4 • C • 6-3 • SR • 4L • HOUSTON, TEXAS (TRAVIS HS)

2021-22 AWARDS

- CUNCUN CHALLENGE MAYAN DIVISION ALL-TOURNAMENT TEAM
- PRESEASON ALL-BIG 12 TEAM
- LESLIE AWARD PRESEASON WATCH LIST
- WOODEN AWARD TOP 50 WATCH LIST
- NAISMITH PRESEASON WATCH LIST

- Pulled down a career-high 16 rebounds vs. Morehead State and tied her career high with four assists
- Posted a double-double with 16 points and 10 rebounds at Oklahoma (1/12)
- Is 11 points from scoring 1,000 in her career

2021-22 NOTABLES

- Recorded a double-double to open the season with 16 points and 11 rebounds against Texas State (11/9)
- Logged her fourth career 20+ point, 10+ rebound game with 22 points and 11 boards vs. New Orleans (11/15)
- Could not be stopped against Houston as she finished with 16 points off 50 percent shooting from the floor to go with eight boards and three blocks.

2021-22 GAME-BY-GAME STATISTICS

Opponent	Date	GS	MIN	Total		3-Pointers		Free throws		Rebounds				PF	A	TO	BLK	STL	PTS	AVG
				FG-FGA	PCT	3FG-3FGA	PCT	FT-FTA	PCT	OFF	DEF	TOT	AVG							
Texas St.	11/09/2021	*	27:57	6-8	.750	0-0	.000	4-4	1.000	6	5	11	11.0	2	0	4	2	1	16	16.0
at UT Arlington	11/11/2021	*	19:03	3-5	.600	0-0	.000	0-0	.000	1	3	4	7.5	2	1	2	2	1	6	11.0
New Orleans	11/15/2021	*	28:14	11-12	.917	0-0	.000	0-1	.000	8	3	11	8.7	2	0	3	3	1	22	14.7
at Maryland	11/21/2021	*	17:32	1-4	.250	0-1	.000	1-2	.500	1	2	3	7.3	2	2	0	1	0	3	11.8
vs Fordham	11/25/2021	*	24:06	0-9	.000	0-0	.000	2-2	1.000	1	7	8	7.4	1	1	2	0	1	2	9.8
vs Arizona St.	11/26/2021	*	27:57	4-14	.286	0-0	.000	3-4	.750	2	3	5	7.0	1	1	1	3	1	11	10.0
vs Houston	11/27/2021	*	24:39	6-12	.500	0-0	.000	4-6	.667	2	6	8	7.1	4	1	2	3	0	16	10.9
Morehead St.	11/30/2021	*	29:17	5-7	.714	0-0	.000	1-2	.500	3	13	16	8.3	1	4	0	1	1	11	10.9
Missouri	12/04/2021	*	16:57	1-7	.143	0-0	.000	0-0	.000	0	6	6	8.0	3	0	3	1	0	2	9.9
Alcorn	12/08/2021	*	14:00	4-6	.667	0-0	.000	1-1	1.000	5	2	7	7.9	1	3	1	3	2	9	9.8
vs Michigan	12/19/2021	*	20:33	2-4	.500	0-0	.000	0-0	.000	1	3	4	7.5	2	0	2	2	0	4	9.3
North Texas	12/29/2021	*	24:17	4-8	.500	0-0	.000	4-6	.667	3	8	11	7.8	2	0	2	0	3	12	9.5
at Kansas St.	01/02/2022	*	17:29	2-4	.500	0-0	.000	0-0	.000	2	2	4	7.5	5	0	3	0	0	4	9.1
at Oklahoma	01/12/2022	*	22:46	6-12	.500	0-0	.000	4-5	.800	4	6	10	7.7	2	0	2	2	1	16	9.6
at Kansas	01/16/2022	*	23:18	4-9	.444	0-0	.000	2-3	.667	1	9	10	7.9	1	0	3	2	0	10	9.6
Totals		15	338:05	59-121	.488	0-1	.000	26-36	.722	40	78	118	7.9	31	13	30	25	12	144	9.6

EGBO'S CAREER STATISTICS

SEASON	TEAM	GP-GS	MIN/AVG	Field Goals		3-Point		F-Throws		Rebounds				Scoring						
				FG-FGA	FG%	3FG-3FGA	3FG%	FT-FTA	FT%	OFF	DEF	TOT	AVG	PF-FO	A	TO	BLK	STL	PTS	AVG
2018-19	Baylor	35-0	354/10.1	72-159	.453	0-0	.000	44-87	.506	65	82	147	4.2	52-1	11	35	32	21	188	5.4
2019-20	Baylor	30-8	553/18.4	142-235	.604	0-2	.000	41-84	.488	68	136	204	6.8	74-2	12	51	32	27	325	10.8
2020-21	Baylor	30-30	746/24.9	135-270	.500	0-0	.000	62-97	.639	89	169	258	8.6	72-1	27	76	56	36	332	11.1
2021-22	Baylor	15-15	338/22.5	59-121	.488	0-1	.000	26-36	.722	40	78	118	7.9	31-1	13	30	25	12	144	9.6
TOTAL		110-53	1992/18.1	408-785	.520	0-3	.000	173-304	.569	262	465	727	6.6	229-5	63	192	145	96	989	9.0



#10 • G • 5-8 • JR. • 1L • PLANO, TEXAS (PLANO WEST HS / UCLA)

2021-22 NOTABLES

- Claiming the role of “defensive stopper” this season for the Bears
- Set a career high with five rebounds vs. Texas State (11/9)

JADEN OWENS

MAJOR

Communication

CAREER HIGHS

Points	
15, vs. Iowa State [1/16/21]	
Rebounds	
5, vs. Texas State (11/9/21)	
vs. North Texas (12/29/21)	
Assists	
8, vs. McNeese State [12/19/20]	
Blocks	
1, vs. Long Beach St. [11/14/19] *	
Steals	
3, twice	
Field Goals	
5, vs. Iowa State [1/16/21]	
Field Goal Attempts	
13, vs. Iowa State [1/16/21]	
3-Point Field Goals	
4, vs. Iowa State [1/16/21]	
3-Point Field Goal Attempts	
8, vs. Iowa State [1/16/21]	
Free Throws	
3, three times *	
Free Throw Attempts	
6, at Washington State [2/21/20] *	
Minutes Played	
34, vs. Iowa State [1/16/21]	

* Accomplished at UCLA

MISCELLANEOUS

Double Figure Scoring	1
Led BU in Scoring	1
Led BU in Assists	1

2021-22 GAME-BY-GAME STATISTICS

Opponent	Date	GS	MIN	Total		3-Pointers		Free throws		Rebounds				Other Stats							
				FG-FGA	PCT	3FG-3FGA	PCT	FT-FTA	PCT	OFF	DEF	TOT	AVG	PF	A	TO	BLK	STL	PTS	AVG	
Texas St.	11/09/2021		27:35	3-6	.500	2-5	.400	0-0	.000	0	5	5	5.0	1	2	1	0	1	8	8.0	
at UT Arlington	11/11/2021		24:01	1-4	.250	0-2	.000	1-2	.500	0	2	2	3.5	3	2	1	0	0	3	5.5	
New Orleans	11/15/2021		19:32	0-2	.000	0-2	.000	0-0	.000	0	0	0	2.3	0	3	1	0	2	0	3.7	
at Maryland	11/21/2021		21:28	1-3	.333	0-2	.000	0-0	.000	1	3	4	2.8	1	0	0	0	1	2	3.3	
vs Fordham	11/25/2021		10:39	0-1	.000	0-1	.000	1-2	.500	0	0	0	2.2	2	0	1	0	0	1	2.8	
vs Arizona St.	11/26/2021		11:48	0-1	.000	0-0	.000	0-0	.000	0	0	0	1.8	1	0	1	0	1	0	2.3	
vs Houston	11/27/2021		14:03	0-3	.000	0-2	.000	2-2	1.000	0	1	1	1.7	2	0	2	0	1	2	2.3	
Missouri	12/04/2021		00:39	0-0	.000	0-0	.000	0-0	.000	0	0	0	1.5	0	0	0	0	0	0	2.0	
vs Michigan	12/19/2021		06:48	0-0	.000	0-0	.000	0-0	.000	0	0	0	1.3	1	0	0	0	0	0	1.8	
North Texas	12/29/2021		19:09	0-1	.000	0-1	.000	0-0	.000	2	3	5	1.7	2	2	1	0	1	0	1.6	
at Oklahoma	01/12/2022		07:54	0-0	.000	0-0	.000	0-0	.000	0	1	1	1.6	0	1	2	0	0	0	1.5	
at Kansas	01/16/2022		13:21	1-2	.500	1-2	.500	0-0	.000	1	0	1	1.6	0	4	0	0	2	3	1.6	
Totals		0	176:56	6-23	.261	3-17	.176	4-6	.667	4	15	19	1.6	13	14	10	0	9	19	1.6	

OWENS'S CAREER STATISTICS

				Field Goals		3-Point		F-Throws		Rebounds								Scoring		
SEASON	TEAM	GP-GS	MIN/AVG	FG-FGA	FG%	3FG-3FGA	3FG%	FT-FTA	FT%	OFF	DEF	TOT	AVG	PF-FO	A	TO	BLK	STL	PTS	AVG
2019-20	UCLA	28-0	268/9.6	21-76	.276	10-42	.238	19-28	.679	5	19	24	0.9	19-0	34	19	1	18	71	2.5
2020-21	Baylor	17-0	151/8.9	15-39	.385	7-20	.350	3-7	.429	2	13	15	0.9	17-0	38	8	0	13	40	2.4
2021-22	Baylor	12-0	177/14.7	6-23	.261	3-17	.176	4-6	.667	4	15	19	1.6	13-0	14	10	0	9	19	1.6
TOTAL FOR Baylor		29-0	327/11.3	21-62	.339	10-37	.270	7-13	.538	6	28	34	1.2	30-0	52	18	0	22	59	2.0
TOTAL		57-0	595/10.4	42-138	.304	20-79	.253	26-41	.634	11	47	58	1.0	49-0	86	37	1	40	130	2.3



#11 • 5-10 • G • FR • HS • BELLE MEAD, N.J. (MONTGOMERY HS)

2021-22 NOTABLES

- Made her Baylor debut at UT Arlington (11/11)
- Notched her first career block in the final seconds against Houston (11/27)
- Played a career-high 10 minutes vs. Alcorn State (12/8)

**ANDREA
KATRAMADOS**

MAJOR

Data Science

CAREER HIGHS

Points

Rebounds

Assists

Blocks

1, vs. Houston (11/27/21)

Steals

Field Goals

Field Goal Attempts

3, vs. Alcorn State (12/8/21)

3-Point Field Goals

3-Point Field Goal Attempts

2, vs. Alcorn State (12/8/21)

Free Throws

Free Throw Attempts

Minutes Played

10, vs. Alcorn State (12/8/21)

MISCELLANEOUS

Double-Figure Scoring

Double-Figure Rebounding

Double-Doubles

Led Team in Rebounds

Led Team in Steals

Led Team in Blocks

Led Team in Assists

2021-22 GAME-BY-GAME STATISTICS

Opponent	Date	GS	MIN	Total		3-Pointers		Free throws		Rebounds				PF				STL				PTS		AVG
				FG-FGA	PCT	3FG-3FGA	PCT	FT-FTA	PCT	OFF	DEF	TOT	AVG	A	TO	BLK	STL	PTS	AVG					
at UT Arlington	11/11/2021		02:37	0-0	.000	0-0	.000	0-0	.000	0	0	0	0.0	0	0	0	0	0	0	0	0	0.0		
vs Fordham	11/25/2021		02:01	0-0	.000	0-0	.000	0-0	.000	0	0	0	0.0	0	0	0	0	0	0	0	0	0.0		
vs Houston	11/27/2021		01:37	0-0	.000	0-0	.000	0-0	.000	0	0	0	0.0	0	0	0	1	0	0	0	0	0.0		
Alcorn	12/08/2021		10:00	0-3	.000	0-2	.000	0-0	.000	0	0	0	0.0	0	0	0	0	0	0	0	0	0.0		
North Texas	12/29/2021		02:11	0-0	.000	0-0	.000	0-0	.000	0	0	0	0.0	0	0	1	0	0	0	0	0	0.0		
Totals		0	18:26	0-3	.000	0-2	.000	0-0	.000	0	0	0	0.0	0	0	1	1	0	0	0	0	0.0		

KATRAMADOS'S CAREER STATISTICS

				Field Goals		3-Point		F-Throws		Rebounds									Scoring	
SEASON	TEAM	GP-GS	MIN/AVG	FG-FGA	FG%	3FG-3FGA	3FG%	FT-FTA	FT%	OFF	DEF	TOT	AVG	PF-FO	A	TO	BLK	STL	PTS	AVG
2021-22	Baylor	5-0	18/3.7	0-3	.000	0-2	.000	0-0	.000	0	0	0	0.0	0-0	0	1	1	0	0	0.0
TOTAL		5-0	18/3.7	0-3	.000	0-2	.000	0-0	.000	0	0	0	0.0	0-0	0	1	1	0	0	0.0



JA'MEE ASBERRY

MAJOR

Educational Psychology (Master's)

CAREER HIGHS

Points
28, twice vs. Oklahoma (3/12/21) *

Rebounds
7, vs. North Texas (12/29/21)

Assists
9, at TCU (1/6/21) *

Blocks
1, multiple times *

Steals
5, vs. Southern U. (12/2/20) *

Field Goals
11, vs. Texas Tech (1/2/21) *

Field Goal Attempts
29, vs. Oklahoma (3/12/21) *

3-Point Field Goals
6, 5X last at Kansas (1/16/22)

3-Point Field Goal Attempts
17, vs. Oklahoma (3/12/21) *

Free Throws
5, twice last vs. Baylor (1/20/21) *

Free Throw Attempts
8, vs. Oklahoma (3/12/21) *

Minutes Played
43, vs. Oklahoma (3/12/21) *

MISCELLANEOUS

Double-Figure Scoring 39
Double-Doubles 3
20+ Point Games 21
30+ Point Games 1
* Accomplished at Oklahoma State

#21 • 5-5 • G • JR • TR • TULSA, OKLA. (EAST CENTRAL HS / OKLAHOMA STATE)

2021-22 AWARDS

- PRESEASON ALL-BIG 12 HONORABLE MENTION

2021-22 NOTABLES

- Made her Baylor debut vs. Texas State
- Went 5-for-11 from the perimeter at UT Arlington
- Tied her career high with six 3s vs. Alcorn State to record her 20th career 20-point game against the Lady Braves
- Hit six 3s again at Kansas. Nailed her sixth of the game to cut KU's lead to one with less than 20 seconds left. Then drained a pair of free throws with eight seconds left to give the Bears the lead.
- Surpassed the 1,000-point mark at Oklahoma (1/12)

2021-22 GAME-BY-GAME STATISTICS

Opponent	Date	GS	MIN	Total		3-Pointers		Free throws		Rebounds				PF	A	TO	BLK	STL	PTS	AVG
				FG-FGA	PCT	3FG-3FGA	PCT	FT-FTA	PCT	OFF	DEF	TOT	AVG							
Texas St.	11/09/2021	*	29:59	1-7	.143	1-6	.167	0-0	.000	0	5	5	5.0	1	2	2	0	0	3	3.0
at UT Arlington	11/11/2021	*	27:02	6-15	.400	5-11	.455	0-0	.000	1	0	1	3.0	1	2	1	0	0	17	10.0
New Orleans	11/15/2021	*	24:00	2-9	.222	1-7	.143	0-0	.000	0	1	1	2.3	2	3	2	0	2	5	8.3
at Maryland	11/21/2021	*	26:12	0-5	.000	0-4	.000	0-0	.000	0	2	2	2.3	0	3	2	0	2	0	6.3
vs Fordham	11/25/2021	*	29:24	4-6	.667	2-4	.500	0-0	.000	0	1	1	2.0	1	1	1	0	0	10	7.0
vs Arizona St.	11/26/2021	*	35:43	3-7	.429	1-4	.250	0-0	.000	1	1	2	2.0	1	1	1	0	1	7	7.0
vs Houston	11/27/2021	*	36:35	3-10	.300	2-7	.286	4-4	1.000	2	2	4	2.3	1	0	3	0	3	12	7.7
Morehead St.	11/30/2021	*	37:48	5-13	.385	4-12	.333	0-0	.000	0	1	1	2.1	0	4	2	0	2	14	8.5
Missouri	12/04/2021	*	37:01	3-8	.375	2-5	.400	1-2	.500	0	1	1	2.0	3	1	3	0	2	9	8.6
Alcorn	12/08/2021	*	34:05	7-11	.636	6-8	.750	0-0	.000	0	2	2	2.0	1	2	0	1	2	20	9.7
vs Michigan	12/19/2021	*	41:12	3-7	.429	0-4	.000	1-2	.500	0	1	1	1.9	4	0	3	0	1	7	9.5
North Texas	12/29/2021	*	35:01	1-6	.167	1-5	.200	0-0	.000	0	7	7	2.3	2	5	0	0	2	3	8.9
at Kansas St.	01/02/2022	*	36:28	5-10	.500	4-7	.571	0-0	.000	1	2	3	2.4	2	0	1	0	0	14	9.3
at Oklahoma	01/12/2022	*	37:46	2-4	.500	2-2	1.000	2-2	1.000	0	0	0	2.2	1	0	1	0	0	8	9.2
at Kansas	01/16/2022	*	37:50	6-12	.500	6-11	.545	2-2	1.000	1	4	5	2.4	2	2	0	0	0	20	9.9
Totals		15	506:05	51-130	.392	37-97	.381	10-12	.833	6	30	36	2.4	22	26	22	1	17	149	9.9

ASBERRY'S CAREER STATISTICS

				Field Goals		3-Point		F-Throws		Rebounds								Scoring		
SEASON	TEAM	GP-GS	MIN/AVG	FG-FGA	FG%	3FG-3FGA	3FG%	FT-FTA	FT%	OFF	DEF	TOT	AVG	PF-FO	A	TO	BLK	STL	PTS	AVG
2018-19	OSU	30-17	573/19.1	63-204	.309	31-105	.295	37-51	.725	13	46	59	2.0	45-0	60	58	4	39	194	6.5
2019-20	OSU	30-20	801/26.7	70-255	.275	30-125	.240	33-50	.660	7	69	76	2.5	55-1	94	34	4	41	203	6.8
2020-21	OSU	28-28	980/35.0	177-447	.396	78-186	.419	44-63	.698	8	64	72	2.6	41-0	105	61	3	44	476	17.0
2021-22	Baylor	15-15	506/33.7	51-130	.392	37-97	.381	10-12	.833	6	30	36	2.4	22-0	26	22	1	17	149	9.9
TOTAL FOR Baylor		15-15	506/33.7	51-130	.392	37-97	.381	10-12	.833	6	30	36	2.4	22-0	26	22	1	17	149	9.9
TOTAL		103-80	2859/27.8	361-1036	.348	176-513	.343	124-176	.705	34	209	243	2.4	163-1	285	175	12	141	1022	9.9



KAMARIA MCDANIEL

MAJOR

Health, Kinesiology & Leisure
Studies

CAREER HIGHS

Points
40, vs. Pittsburgh [12/5/19]*
Rebounds
11, vs. Michigan State [1/9/20]*
Assists
9, vs. Michigan State [1/9/20]*
Blocks
2, multiple times *
Steals
3, multiple times *
Field Goals
14, vs. Pittsburgh [12/5/19]*
Field Goal Attempts
28, vs. Pittsburgh [12/5/19]*
3-Point Field Goals
5, twice *
3-Point Field Goal Attempts
8, multiple times *
Free Throws
10, twice *
Free Throw Attempts
15, vs. Pittsburgh [12/5/19]*
Minutes Played
40, twice *

* Accomplished at Penn State

#22 • 5-10 • G • SR • TR • INKSTER, MICH. (DEARBORN HEIGHTS ROBICHAUD / PENN STATE)

2021-22 NOTABLES

- Made her Baylor debut at UT Arlington (11/11)
- Made her first bucket as a Bear (a 3-pointer) against New Orleans (11/15)
- Graduated with her bachelor's degree in December

2021-22 GAME-BY-GAME STATISTICS

Opponent	Date	GS	MIN	Total		3-Pointers		Free throws		Rebounds				PF	A	TO	BLK	STL	PTS	AVG
				FG-FGA	PCT	3FG-3FGA	PCT	FT-FTA	PCT	OFF	DEF	TOT	AVG							
at UT Arlington	11/11/2021		04:20	0-1	.000	0-0	.000	0-0	.000	0	1	1	1.0	0	0	0	0	0	0	0.0
New Orleans	11/15/2021		18:16	2-4	.500	1-3	.333	0-2	.000	0	0	0	0.5	1	2	1	0	0	5	2.5
vs Fordham	11/25/2021		13:48	0-1	.000	0-1	.000	1-2	.500	1	2	3	1.3	1	1	1	0	0	1	2.0
vs Arizona St.	11/26/2021		11:31	0-1	.000	0-0	.000	2-2	1.000	0	4	4	2.0	0	0	0	1	0	2	2.0
vs Houston	11/27/2021		11:54	0-1	.000	0-0	.000	0-0	.000	0	1	1	1.8	0	0	1	0	0	0	1.6
Morehead St.	11/30/2021		25:00	2-4	.500	2-2	1.000	0-0	.000	0	5	5	2.3	1	4	2	2	0	6	2.3
Missouri	12/04/2021		13:54	1-2	.500	1-1	1.000	1-4	.250	1	0	1	2.1	0	2	1	0	0	4	2.6
Alcorn	12/08/2021		23:45	0-3	.000	0-1	.000	0-0	.000	1	1	2	2.1	2	3	1	0	0	0	2.3
at Kansas St.	01/02/2022		21:09	1-3	.333	0-1	.000	1-2	.500	0	2	2	2.1	2	1	4	0	0	3	2.3
at Oklahoma	01/12/2022		02:14	0-0	.000	0-0	.000	0-0	.000	0	0	0	1.9	0	0	0	0	0	0	2.1
Totals		0	145:51	6-20	.300	4-9	.444	5-12	.417	3	16	19	1.9	7	13	11	3	0	21	2.1

MCDANIEL'S CAREER STATISTICS

				Field Goals		3-Point		F-Throws		Rebounds										Scoring	
SEASON	TEAM	GP-GS	MIN/AVG	FG-FGA	FG%	3FG-3FGA	3FG%	FT-FTA	FT%	OFF	DEF	TOT	AVG	PF-FO	A	TO	BLK	STL	PTS	AVG	
2017-18	PSU	32-0	558/17.4	49-138	.355	31-90	.344	31-43	.721	9	50	59	1.8	27-0	30	25	4	12	160	5.0	
2018-19	PSU	30-5	680/22.7	97-259	.375	33-107	.308	63-84	.750	18	66	84	2.8	54-0	38	43	7	28	290	9.7	
2019-20	PSU	30-29	1029/34.3	199-498	.400	42-134	.313	154-207	.744	40	82	122	4.1	60-1	94	133	20	28	594	19.8	
2021-22	Baylor	10-0	146/14.6	6-20	.300	4-9	.444	5-12	.417	3	16	19	1.9	7-0	13	11	3	0	21	2.1	
TOTAL FOR Baylor		10-0	146/14.6	6-20	.300	4-9	.444	5-12	.417	3	16	19	1.9	7-0	13	11	3	0	21	2.1	
TOTAL		102-34	2412/23.7	351-915	.384	110-340	.324	253-346	.731	70	214	284	2.8	148-1	175	212	34	68	1065	10.4	



SARAH ANDREWS

MAJOR

Undeclared

CAREER HIGHS

Points	25, at Kansas (11/16/22)
Rebounds	8, vs. Texas State (11/9/21)
Assists	9, vs. Houston (11/27/21)
Blocks	1, vs. McNeese State (12/19/20)
Steals	3, vs. Alcorn State (12/8/21)
Field Goal Attempts	17, vs. TCU (1/26/21)
3-Point Field Goals	7, at Kansas (1/16/22)
3-Point Field Goal Attempts	11, vs. TCU (1/26/21)
Free Throws	4, vs. Texas State (11/9/21)
Free Throw Attempts	6, vs. Texas State (11/9/21)
Minutes Played	42 vs. Michigan (12/19/21)

MISCELLANEOUS

Double Figure Scoring	10
Led Team in Steals	6
Led Team in Assists	3

#24 • 5-6 • G • SO • 1L • IRVING, TEXAS (MACARTHUR HS)

2021-22 NOTABLES

- Set a career high with eight rebounds vs. Texas State (11/9)
- Was three points shy of her career high with 15 points at UT Arlington (11/11)
- Set career highs in free throws (3 for 3) and minutes played (31) at UT Arlington (11/11)
- Dropped a career-best eight dimes at No. 3 Maryland (11/21). She finished the game with 10 points, six boards and eight assists.
- Topped that mark with nine assists vs. Houston less than a week later (11/27).
- Started 6-for-6 from deep to finish with a career-high 20 points against Morehead State (11/30).
- Topped those totals with a 7-for-10 showing from the perimeter for a career-best 25 points at Kansas (11/16)

2021-22 GAME-BY-GAME STATISTICS

Opponent	Date	GS	MIN	Total		3-Pointers		Free throws		Rebounds				PF	A	TO	BLK	STL	PTS	AVG
				FG-FGA	PCT	3FG-3FGA	PCT	FT-FTA	PCT	OFF	DEF	TOT	AVG							
Texas St.	11/09/2021	*	30:14	2-11	.182	0-6	.000	4-6	.667	2	6	8	8.0	0	2	2	0	2	8	8.0
at UT Arlington	11/11/2021	*	30:58	5-15	.333	1-5	.200	4-5	.800	1	5	6	7.0	2	3	0	0	1	15	11.5
New Orleans	11/15/2021	*	29:45	5-8	.625	2-4	.500	0-0	.000	0	4	4	6.0	3	6	2	0	1	12	11.7
at Maryland	11/21/2021	*	37:02	4-14	.286	2-7	.286	0-0	.000	4	2	6	6.0	2	8	5	0	0	10	11.3
vs Fordham	11/25/2021	*	31:36	4-8	.500	2-2	1.000	0-0	.000	0	1	1	5.0	1	2	0	0	3	10	11.0
vs Arizona St.	11/26/2021	*	27:52	2-9	.222	1-2	.500	0-3	.000	1	2	3	4.7	4	1	1	0	1	5	10.0
vs Houston	11/27/2021	*	27:60	2-7	.286	1-1	1.000	2-2	1.000	0	3	3	4.4	0	9	1	0	1	7	9.6
Morehead St.	11/30/2021	*	36:25	7-12	.583	6-8	.750	0-0	.000	1	3	4	4.4	1	4	1	0	2	20	10.9
Missouri	12/04/2021	*	30:11	4-9	.444	1-5	.200	1-4	.250	0	3	3	4.2	3	1	1	0	0	10	10.8
Alcorn	12/08/2021	*	27:18	6-11	.545	2-3	.667	0-0	.000	0	5	5	4.3	0	5	2	0	3	14	11.1
vs Michigan	12/19/2021	*	42:00	7-17	.412	2-4	.500	0-1	.000	0	1	1	4.0	1	0	2	0	3	16	11.5
North Texas	12/29/2021	*	29:24	4-15	.267	3-8	.375	0-0	.000	0	0	0	3.7	5	4	3	1	0	11	11.5
at Kansas St.	01/02/2022	*	24:30	2-8	.250	1-3	.333	0-0	.000	0	0	0	3.4	1	2	3	0	0	5	11.0
at Oklahoma	01/12/2022	*	34:37	0-4	.000	0-2	.000	5-6	.833	0	2	2	3.3	4	2	4	0	2	5	10.6
at Kansas	01/16/2022	*	37:15	8-14	.571	7-10	.700	2-2	1.000	4	0	4	3.3	1	6	1	0	2	25	11.5
Totals		15	477:08	62-162	.383	31-70	.443	18-29	.621	13	37	50	3.3	28	55	28	1	21	173	11.5

ANDREWS'S CAREER STATISTICS

				Field Goals		3-Point		F-Throws		Rebounds										Scoring	
SEASON	TEAM	GP-GS	MIN/AVG	FG-FGA	FG%	3FG-3FGA	3FG%	FT-FTA	FT%	OFF	DEF	TOT	AVG	PF-FO	A	TO	BLK	STL	PTS	AVG	
2020-21	Baylor	31-1	351/11.3	50-133	.376	26-67	.388	3-5	.600	8	30	38	1.2	36-1	38	33	2	19	129	4.2	
2021-22	Baylor	15-15	477/31.8	62-162	.383	31-70	.443	18-29	.621	13	37	50	3.3	28-1	55	28	1	21	173	11.5	
TOTAL		46-16	828/18.0	112-295	.380	57-137	.416	21-34	.618	21	67	88	1.9	64-2	93	61	3	40	302	6.6	



KENDRA GILLISPIE

MAJOR

Undecided

CAREER HIGHS

Points
6, vs. North Texas (12/29/21)
Rebounds
5, vs. Alcorn State (12/8/21)
Assists
1, vs. Alcorn State (12/8/21)
vs. New Orleans (11/15/21)
Blocks
1, vs. Fordham (11/25/21)
Steals
1, vs. Alcorn State (12/8/21)
Field Goals
2, vs. North Texas (12/29/21)
Field Goal Attempts
4, vs. Alcorn State (12/8/21)
3-Point Field Goals
3-Point Field Goal Attempts
1, vs. Alcorn State (12/8/21)
Free Throws
3, vs. Alcorn State (12/8/21)
Free Throw Attempts
4, vs. Alcorn State (12/8/21)
Minutes Played
22, vs. Alcorn State (12/8/21)

MISCELLANEOUS

Double-Figure Scoring
Double-Figure Rebounding
Double-Doubles
Led Team in Rebounds
Led Team in Steals
Led Team in Blocks
Led Team in Assists

#25 • 6-2 • F • FR • HS • OKLAHOMA CITY, OKLA. (HARDING CHARTER PREP)

2021-22 NOTABLES

- Made her Baylor debut at UT Arlington (11/11)
- Recorded her first career points as a Bear vs. New Orleans (11/15)
- Logged a career-high 8 minutes vs. Houston (11/27) at that time
- Had a career game vs. Alcorn State in 21 minutes of action
- Went 2-2 from the floor for a career-high six points vs. North Texas (12/29/21)

2021-22 GAME-BY-GAME STATISTICS

Opponent	Date	GS	MIN	Total		3-Pointers		Free throws		Rebounds				PF						
				FG-FGA	PCT	3FG-3FGA	PCT	FT-FTA	PCT	OFF	DEF	TOT	AVG	A	TO	BLK	STL	PTS	AVG	
at UT Arlington	11/11/2021		03:21	0-1	.000	0-0	.000	0-0	.000	0	1	1	1.0	2	0	0	0	0	0.0	
New Orleans	11/15/2021		04:53	1-1	1.000	0-0	.000	1-1	1.000	0	0	0	0.5	0	1	0	0	0	1.5	
vs Fordham	11/25/2021		03:21	0-1	.000	0-0	.000	2-2	1.000	1	0	1	0.7	1	0	1	1	0	1.7	
vs Houston	11/27/2021		07:26	0-1	.000	0-0	.000	0-0	.000	0	1	1	0.8	0	0	0	0	0	1.3	
Morehead St.	11/30/2021		05:33	0-2	.000	0-0	.000	0-0	.000	1	0	1	0.8	0	0	1	0	0	1.0	
Alcorn	12/08/2021		21:37	1-4	.250	0-1	.000	3-4	.750	1	4	5	1.5	0	1	0	0	1	1.7	
North Texas	12/29/2021		06:05	2-2	1.000	0-0	.000	2-2	1.000	2	1	3	1.7	0	0	0	0	6	2.3	
Totals		0	52:16	4-12	.333	0-1	.000	8-9	.889	5	7	12	1.7	3	2	2	1	1	16	2.3

GILLISPIE'S CAREER STATISTICS

				Field Goals		3-Point		F-Throws		Rebounds									Scoring	
SEASON	TEAM	GP-GS	MIN/AVG	FG-FGA	FG%	3FG-3FGA	3FG%	FT-FTA	FT%	OFF	DEF	TOT	AVG	PF-FO	A	TO	BLK	STL	PTS	AVG
2021-22	Baylor	7-0	52/7.5	4-12	.333	0-1	.000	8-9	.889	5	7	12	1.7	3-0	2	2	1	1	16	2.3
TOTAL		7-0	52/7.5	4-12	.333	0-1	.000	8-9	.889	5	7	12	1.7	3-0	2	2	1	1	16	2.3



CAITLIN BICKLE

MAJOR

Sport Management (Master's)

CAREER HIGHS

Points	
13 vs. Alcorn State (12/8/21)	
vs. North Texas (12/29/21)	
Rebounds	
8 at UT Arlington (11/11/21)	
vs. Arizona State (11/26/21)	
Assists	
6 vs. Alcorn State (12/8/21)	
Blocks	
3 vs. Georgia (12/4/19)	
Steals	
3 vs. Alcorn State (12/8/21)	
at Kansas State (1/2/22)	
Field Goals	
4, 4X last at Kansas (1/16/22)	
Field Goal Attempts	
8, vs. New Orleans (11/15/21)	
3-Point Field Goals	
2 vs. Southern (11/15/18);	
vs. Nicholls (11/6/18)	
3-Point Field Goal Attempts	
4 vs. Southern (11/15/18)	
Free Throws	
9 vs. Alcorn State (12/8/21)	
Free Throw Attempts	
10 vs. Alcorn State (12/8/21)	
Minutes Played	
30 vs. Alcorn State (12/8/21)	

MISCELLANEOUS

Double-Figure Scoring	7
Led Team in Rebounds	1
Led Team in Steals	2
Led Team in Assists	2
Led Team in Blocks	3

#51 • 6-0 • F • SR • 3L • CAVE CREEK, ARIZ. (CACTUS SHADOWS HS)

2021-22 NOTABLES

- Had an all-around game for the Bears at UT Arlington (11/11) with seven points, eight rebounds (career high), three assists, two blocks and a handful of charges taken all in a career-high 29 minutes.
- Recorded a career game with 13 points and a team-best six assists against Alcorn State (12/8)
- Tied her career high with 13 points against North Texas (12/29)
- Set a career high twice in 2021-22 with three steals against Alcorn State and at Kansas State

2021-22 GAME-BY-GAME STATISTICS

Opponent	Date	GS	MIN	Total		3-Pointers		Free throws		Rebounds				PF	A	TO	BLK	STL	PTS	AVG
				FG-FGA	PCT	3FG-3FGA	PCT	FT-FTA	PCT	OFF	DEF	TOT	AVG							
Texas St.	11/09/2021		17:43	2-4	.500	0-2	.000	1-2	.500	0	0	0	0.0	2	1	0	0	0	5	5.0
at UT Arlington	11/11/2021		28:36	2-4	.500	0-0	.000	3-3	1.000	3	5	8	4.0	1	3	2	2	0	7	6.0
New Orleans	11/15/2021		17:55	3-8	.375	0-1	.000	4-6	.667	2	3	5	4.3	0	0	0	0	1	10	7.3
at Maryland	11/21/2021		24:59	1-3	.333	0-1	.000	0-0	.000	0	4	4	4.3	4	0	1	1	0	2	6.0
vs Fordham	11/25/2021		19:49	3-7	.429	1-3	.333	1-1	1.000	1	5	6	4.6	1	0	4	0	0	8	6.4
vs Arizona St.	11/26/2021		24:56	2-3	.667	0-1	.000	1-1	1.000	3	5	8	5.2	2	3	2	0	1	5	6.2
vs Houston	11/27/2021		20:19	3-4	.750	1-1	1.000	2-2	1.000	1	5	6	5.3	1	1	1	0	0	9	6.6
Morehead St.	11/30/2021		18:32	3-6	.500	0-2	.000	3-3	1.000	4	2	6	5.4	1	1	0	0	0	9	6.9
Missouri	12/04/2021		24:48	4-7	.571	0-2	.000	3-4	.750	0	2	2	5.0	2	3	0	0	1	11	7.3
Alcorn	12/08/2021		30:13	2-6	.333	0-2	.000	9-10	.900	1	5	6	5.1	1	6	2	0	2	13	7.9
vs Michigan	12/19/2021		27:27	2-7	.286	1-3	.333	0-0	.000	0	3	3	4.9	5	2	1	0	0	5	7.6
North Texas	12/29/2021		24:33	5-9	.556	3-4	.750	0-0	.000	1	5	6	5.0	4	1	5	1	0	13	8.1
at Kansas St.	01/02/2022		24:03	3-7	.429	0-3	.000	1-1	1.000	1	1	2	4.8	4	1	5	1	3	7	8.0
at Oklahoma	01/12/2022		19:25	5-10	.500	0-1	.000	1-2	.500	1	2	3	4.6	2	2	1	0	1	11	8.2
at Kansas	01/16/2022		24:45	4-6	.667	0-1	.000	0-0	.000	3	1	4	4.6	5	2	1	2	0	8	8.2
Totals		0	348:03	44-91	.484	6-27	.222	29-35	.829	21	48	69	4.6	35	26	25	7	9	123	8.2

BICKLE'S CAREER STATISTICS

SEASON	TEAM	GP-GS	MIN/AVG	Field Goals		3-Point		F-Throws		Rebounds				Scoring						
				FG-FGA	FG%	3FG-3FGA	3FG%	FT-FTA	FT%	OFF	DEF	TOT	AVG	PF-FO	A	TO	BLK	STL	PTS	AVG
2018-19	Baylor	28-0	162/5.8	19-42	.452	6-14	.429	12-18	.667	16	16	32	1.1	14-0	8	15	3	11	56	2.0
2019-20	Baylor	26-0	236/9.1	29-52	.558	3-11	.273	11-17	.647	14	41	55	2.1	23-0	20	15	5	4	72	2.8
2020-21	Baylor	29-1	418/14.4	48-99	.485	9-26	.346	27-34	.794	46	81	127	4.4	45-0	26	19	8	14	132	4.6
2021-22	Baylor	15-0	348/23.2	44-91	.484	6-27	.222	29-35	.829	21	48	69	4.6	35-2	26	25	7	9	123	8.2
TOTAL		98-1	1164/11.9	140-284	.493	24-78	.308	79-104	.760	97	186	283	2.9	117-2	80	74	23	38	383	3.9

2021-22 OVERALL STATISTICS
Game Records

Record	Overall	Home	Away	Neutral
ALL GAMES	11-4	6-0	2-3	3-1
CONFERENCE	1-2	0-0	1-2	0-0
NON-CONFERENCE	10-2	6-0	1-1	3-1

Score by Periods

Team	1st	2nd	3rd	4th	OT	TOT
Baylor	280	258	315	263	9	1125
Opponents	209	210	220	248	15	902

Team Box Score

No. Player					Total		3-Point		F-Throw		Rebounds													
		GP-GS	MIN	AVG	FG-FGA	FG%	3FG-3FGA	3FG%	FT-FTA	FT%	OFF	DEF	TOT	AVG	PF	DQ	A	TO	BLK	STL	PTS	AVG		
1	SMITH, NaLyssa	15-15	480:33	32.0	120-223	.538	4-16	.250	66-90	.733	57	125	182	12.1	37	0	21	40	16	15	310	20.7		
24	ANDREWS, Sarah	15-15	477:08	31.8	62-162	.383	31-70	.443	18-29	.621	13	37	50	3.3	28	1	55	28	1	21	173	11.5		
3	LEWIS, Jordan	15-15	481:37	32.1	53-131	.405	19-68	.279	45-68	.662	10	39	49	3.3	37	0	77	33	1	20	170	11.3		
21	ASBERRY, Ja'Mee	15-15	506:05	33.7	51-130	.392	37-97	.381	10-12	.833	6	30	36	2.4	22	0	26	22	1	17	149	9.9		
4	EGBO, Queen	15-15	338:05	22.5	59-121	.488	0-1	.000	26-36	.722	40	78	118	7.9	31	1	13	30	25	12	144	9.6		
51	BICKLE, Caitlin	15-0	348:03	23.2	44-91	.484	6-27	.222	29-35	.829	21	48	69	4.6	35	2	26	25	7	9	123	8.2		
25	GILLISPIE, Kendra	7-0	52:16	7.5	4-12	.333	0-1	.000	8-9	.889	5	7	12	1.7	3	0	2	2	1	1	16	2.3		
22	MCDANIEL, Kamaria	10-0	145:51	14.6	6-20	.300	4-9	.444	5-12	.417	3	16	19	1.9	7	0	13	11	3	0	21	2.1		
10	OWENS, Jaden	12-0	176:56	14.7	6-23	.261	3-17	.176	4-6	.667	4	15	19	1.6	13	0	14	10	0	9	19	1.6		
11	KATRAMADOS, Andrea	5-0	18:26	3.7	0-3	.000	0-2	.000	0-0	.000	0	0	0	0.0	0	0	0	1	1	0	0	0.0		
Team											24	28	52					5						
Total		15	3025		405-916	.442	104-308	.338	211-297	.710	183	423	606	40.4	213	4	247	207	56	104	1125	75.0		
Opponents		15	3025		324-890	.364	92-303	.304	162-212	.764	156	354	510	34.0	296	8	168	242	41	95	902	60.1		

Team Statistics

	BAYLOR	OPP
Scoring	1125	902
Points per game	75.0	60.1
Scoring margin	+14.9	-
Field goals-att	405-916	324-890
Field goal pct	.442	.364
3 point fg-att	104-308	92-303
3-point FG pct	.338	.304
3-pt FG made per game	6.9	6.1
Free throws-att	211-297	162-212
Free throw pct	.710	.764
F-Throws made per game	14.1	10.8
Rebounds	606	510
Rebounds per game	40.4	34.0
Rebounding margin	+6.4	-
Assists	247	168
Assists per game	16.5	11.2
Turnovers	207	242
Turnovers per game	13.8	16.1
Turnover margin	+2.3	-
Assist/turnover ratio	1.2	0.7
Steals	104	95
Steals per game	6.9	6.3
Blocks	56	41
Blocks per game	3.7	2.7
Winning streak	1	-
Home win streak	6	-
Attendance	26384	16660
Home games-Avg/Game	6-4397	5-3332
Neutral site-Avg/Game	-	4-2148

Team Results

Date	Opponent		Score	Att.
11/09/2021	Texas St.	W	77-70	4180
11/11/2021	at UT Arlington	W	81-54	2182
11/15/2021	New Orleans	W	78-39	4109
11/21/2021	at Maryland	L	76-79	8395
11/25/2021	vs Fordham	W	68-45	103
11/26/2021	vs Arizona St.	W	62-52	155
11/27/2021	vs Houston	W	74-58	129
11/30/2021	Morehead St.	W	73-28	3939
12/04/2021	Missouri	W	70-68	4160
12/08/2021	Alcorn	W	94-40	5838
12/19/2021	vs Michigan	Lot	68-74	8204
12/29/2021	North Texas	W	86-65	4158
01/02/2022	at Kansas St.	L	59-68	2393
01/12/2022	at Oklahoma	L	77-83	2002
01/16/2022	at Kansas	W	82-79	1688

2021-22 BIG 12 STATISTICS

Game Records

Record	Overall	Home	Away	Neutral
ALL GAMES	1-2	0-0	1-2	0-0
CONFERENCE	1-2	0-0	1-2	0-0
NON-CONFERENCE	0-0	0-0	0-0	0-0

Score by Periods

Team	1st	2nd	3rd	4th	OT	TOT
Baylor	42	61	63	52	0	218
Opponents	54	47	68	61	0	230

Team Box Score

No. Player					Total		3-Point		F-Throw		Rebounds													
		GP-GS	MIN	AVG	FG-FGA	FG%	3FG-3FGA	3FG%	FT-FTA	FT%	OFF	DEF	TOT	AVG	PF	DQ	A	TO	BLK	STL	PTS	AVG		
1	SMITH, NaLyssa	3-3	109:47	36.6	22-54	.407	0-2	.000	13-20	.650	13	12	25	8.3	10	0	7	7	2	5	57	19.0		
21	ASBERRY, Ja'Mee	3-3	112:04	37.4	13-26	.500	12-20	.600	4-4	1.000	2	6	8	2.7	5	0	2	2	0	0	42	14.0		
24	ANDREWS, Sarah	3-3	96:22	32.1	10-26	.385	8-15	.533	7-8	.875	4	2	6	2.0	6	0	10	8	0	4	35	11.7		
4	EGBO, Queen	3-3	63:32	21.2	12-25	.480	0-0	.000	6-8	.750	7	17	24	8.0	8	1	0	8	4	1	30	10.0		
51	BICKLE, Caitlin	3-0	68:13	22.7	12-23	.522	0-5	.000	2-3	.667	5	4	9	3.0	11	1	5	7	3	4	26	8.7		
3	LEWIS, Jordan	3-3	105:24	35.1	6-23	.261	3-15	.200	7-12	.583	2	15	17	5.7	11	0	17	11	0	7	22	7.3		
10	OWENS, Jaden	2-0	21:15	10.6	1-2	.500	1-2	.500	0-0	.000	1	1	2	1.0	0	0	5	2	0	2	3	1.5		
22	MCDANIEL, Kamaria	2-0	23:23	11.7	1-3	.333	0-1	.000	1-2	.500	0	2	2	1.0	2	0	1	4	0	0	3	1.5		
Team											5	5	10				1							
Total		3	600		77-182	.423	24-60	.400	40-57	.702	39	64	103	34.3	53	2	47	50	9	23	218	72.7		
Opponents		3	600		79-162	.488	28-59	.475	44-58	.759	25	72	97	32.3	59	1	52	53	11	21	230	76.7		

Team Statistics

	BAYLOR	OPP
Scoring	218	230
Points per game	72.7	76.7
Scoring margin	-4.0	-
Field goals-att	77-182	79-162
Field goal pct	.423	.488
3 point fg-att	24-60	28-59
3-point FG pct	.400	.475
3-pt FG made per game	8.0	9.3
Free throws-att	40-57	44-58
Free throw pct	.702	.759
F-Throws made per game	13.3	14.7
Rebounds	103	97
Rebounds per game	34.3	32.3
Rebounding margin	+2.0	-
Assists	47	52
Assists per game	15.7	17.3
Turnovers	50	53
Turnovers per game	16.7	17.7
Turnover margin	+1.0	-
Assist/turnover ratio	0.9	1.0
Steals	23	21
Steals per game	7.7	7.0
Blocks	9	11
Blocks per game	3.0	3.7
Winning streak	1	-
Home win streak	0	-
Attendance	0	6083
Home games-Avg/Game	0-0	3-2028
Neutral site-Avg/Game	-	0-0

Team Results

Date	Opponent		Score	Att.
01/02/2022	at Kansas St.	L	59-68	2393
01/12/2022	at Oklahoma	L	77-83	2002
01/16/2022	at Kansas	W	82-79	1688

2021-22 LAST FIVE GAMES

Game Records

Record	Overall	Home	Away	Neutral
ALL GAMES	2-3	1-0	1-2	0-1
CONFERENCE	1-2	0-0	1-2	0-0
NON-CONFERENCE	1-1	1-0	0-0	0-1

Score by Periods

Team	1st	2nd	3rd	4th	OT	TOT
Baylor	87	89	102	85	9	372
Opponents	83	84	93	94	15	369

Team Box Score

No.	Player				Total		3-Point		F-Throw		Rebounds													
		GP-GS	MIN	AVG	FG-FGA	FG%	3FG-3FGA	3FG%	FT-FTA	FT%	OFF	DEF	TOT	AVG	PF	DQ	A	TO	BLK	STL	PTS	AVG		
1	SMITH, NaLyssa	5-5	178:25	35.7	44-90	.489	1-6	.167	17-26	.654	19	31	50	10.0	14	0	10	11	5	7	106	21.2		
24	ANDREWS, Sarah	5-5	167:46	33.6	21-58	.362	13-27	.481	7-9	.778	4	3	7	1.4	12	1	14	13	1	7	62	12.4		
21	ASBERRY, Ja'Mee	5-5	188:17	37.7	17-39	.436	13-29	.448	5-6	.833	2	14	16	3.2	11	0	7	5	0	3	52	10.4		
3	LEWIS, Jordan	5-5	183:06	36.6	13-45	.289	5-25	.200	19-25	.760	5	18	23	4.6	18	0	31	15	0	12	50	10.0		
4	EGBO, Queen	5-5	108:22	21.7	18-37	.486	0-0	.000	10-14	.714	11	28	39	7.8	12	1	0	12	6	4	46	9.2		
51	BICKLE, Caitlin	5-0	120:13	24.0	19-39	.487	4-12	.333	2-3	.667	6	12	18	3.6	20	2	8	13	4	4	44	8.8		
25	GILLISPIE, Kendra	1-0	06:05	6.1	2-2	1.000	0-0	.000	2-2	1.000	2	1	3	3.0	0	0	0	0	0	0	6	6.0		
22	MCDANIEL, Kamaria	2-0	23:23	11.7	1-3	.333	0-1	.000	1-2	.500	0	2	2	1.0	2	0	1	4	0	0	3	1.5		
10	OWENS, Jaden	4-0	47:12	11.8	1-3	.333	1-3	.333	0-0	.000	3	4	7	1.8	3	0	7	3	0	3	3	0.8		
11	KATRAMADOS, Andrea	1-0	02:11	2.2	0-0	.000	0-0	.000	0-0	.000	0	0	0	0.0	0	0	0	1	0	0	0	0.0		
Team											9	10	19				1							
Total		5	1025		136-316	.430	37-103	.359	63-87	.724	61	123	184	36.8	92	4	78	78	16	40	372	74.4		
Opponents		5	1025		127-291	.436	38-91	.418	77-103	.748	49	126	175	35.0	93	2	67	82	15	35	369	73.8		

Team Statistics

	BAYLOR	OPP
Scoring	372	369
Points per game	74.4	73.8
Scoring margin	+0.6	-
Field goals-att	136-316	127-291
Field goal pct	.430	.436
3 point fg-att	37-103	38-91
3-point FG pct	.359	.418
3-pt FG made per game	7.4	7.6
Free throws-att	63-87	77-103
Free throw pct	.724	.748
F-Throws made per game	12.6	15.4
Rebounds	184	175
Rebounds per game	36.8	35.0
Rebounding margin	+1.8	-
Assists	78	67
Assists per game	15.6	13.4
Turnovers	78	82
Turnovers per game	15.6	16.4
Turnover margin	+0.8	-
Assist/turnover ratio	1.0	0.8
Steals	40	35
Steals per game	8.0	7.0
Blocks	16	15
Blocks per game	3.2	3.0
Winning streak	1	-
Home win streak	1	-
Attendance	4158	6083
Home games-Avg/Game	1-4158	3-2028
Neutral site-Avg/Game	-	1-8204

Team Results

Date	Opponent		Score	Att.
12/19/2021	vs Michigan	Lot	68-74	8204
12/29/2021	North Texas	W	86-65	4158
01/02/2022	at Kansas St.	L	59-68	2393
01/12/2022	at Oklahoma	L	77-83	2002
01/16/2022	at Kansas	W	82-79	1688

2021-22 TEAM GAME-BY-GAME STATISTICS

				Total		3-Pointers		Free throws		Rebounds											
Opponent	Date	Score		FG-FGA	PCT	3FG-3FGA	PCT	FT-FTA	PCT	OFF	DEF	TOT	AVG	PF	A	TO	BLK	STL	PTS	AVG	
Texas St.	11/09/2021	77-70	W	26-62	.419	4-25	.160	21-30	.700	11	33	44	44.0	13	14	16	4	6	77	77.0	
at UT Arlington	11/11/2021	81-54	W	29-63	.460	9-25	.360	14-17	.824	12	30	42	43.0	16	16	13	6	4	81	79.0	
New Orleans	11/15/2021	78-39	W	30-56	.536	6-22	.273	12-19	.632	14	21	35	40.3	11	20	15	4	8	78	78.7	
at Maryland	11/21/2021	76-79	L	33-72	.458	6-25	.240	4-5	.800	15	28	43	41.0	15	16	15	2	3	76	78.0	
vs Fordham	11/25/2021	68-45	W	25-58	.431	6-15	.400	12-18	.667	12	29	41	41.0	13	12	17	1	7	68	76.0	
vs Arizona St.	11/26/2021	62-52	W	21-57	.368	2-9	.222	18-26	.692	14	28	42	41.2	15	11	11	6	6	62	73.7	
vs Houston	11/27/2021	74-58	W	22-58	.379	6-15	.400	24-31	.774	14	36	50	42.4	10	16	12	6	8	74	73.7	
Morehead St.	11/30/2021	73-28	W	26-55	.473	13-29	.448	8-11	.727	13	35	48	43.1	7	21	13	4	6	73	73.6	
Missouri	12/04/2021	70-68	W	24-56	.429	4-16	.250	18-32	.563	6	29	35	42.2	15	17	10	2	5	70	73.2	
Alcorn	12/08/2021	94-40	W	33-63	.524	11-24	.458	17-21	.810	11	31	42	42.2	6	26	7	5	11	94	75.3	
vs Michigan	12/19/2021	68-74	Lot	24-63	.381	4-18	.222	16-20	.800	9	26	35	41.5	18	9	15	5	9	68	74.6	
North Texas	12/29/2021	86-65	W	35-71	.493	9-25	.360	7-10	.700	13	33	46	41.9	21	22	13	2	8	86	75.6	
at Kansas St.	01/02/2022	59-68	L	21-54	.389	6-20	.300	11-17	.647	10	17	27	40.8	22	11	22	3	10	59	74.3	
at Oklahoma	01/12/2022	77-83	L	27-56	.482	4-11	.364	19-25	.760	12	27	39	40.6	16	12	18	2	7	77	74.5	
at Kansas	01/16/2022	82-79	W	29-72	.403	14-29	.483	10-15	.667	17	20	37	40.4	15	24	10	4	6	82	75.0	
Total		1125		405-916	.442	104-308	.338	211-297	.710	183	423	606	40.4	213	247	207	56	104	1125	75.0	
Opponents		902		324-890	.364	92-303	.304	162-212	.764	156	354	510	34.0	296	168	242	41	95	902	60.1	

Baylor Averages

Games Played	Points/game	FG Pct	3FG Pct	FT Pct	Rebounds/game	Assists/game	Turnovers/game	Assist/Turnover ratio	Steals/game	Blocks/game
15	75.0	44.2	33.8	71.0	40.4	16.5	13.8	1.2	6.9	3.7

2021-22 OPPONENT GAME-BY-GAME STATISTICS

Opponent	Date	Score		Total		3-Pointers		Free throws		Rebounds										
				FG-FGA	PCT	3FG-3FGA	PCT	FT-FTA	PCT	OFF	DEF	TOT	AVG	PF	A	TO	BLK	STL	PTS	AVG
Texas St.	11/09/2021	77-70	W	27-71	.380	9-34	.265	7-8	.875	10	26	36	36.0	29	23	16	0	8	70	70.0
at UT Arlington	11/11/2021	81-54	W	19-60	.317	1-17	.059	15-21	.714	14	23	37	36.5	23	9	14	4	5	54	62.0
New Orleans	11/15/2021	78-39	W	13-40	.325	2-12	.167	11-14	.786	8	16	24	32.3	18	3	25	0	11	39	54.3
at Maryland	11/21/2021	76-79	L	28-70	.400	6-20	.300	17-18	.944	14	25	39	34.0	13	11	9	3	9	79	60.5
vs Fordham	11/25/2021	68-45	W	17-56	.304	6-22	.273	5-5	1.000	9	23	32	33.6	20	10	20	4	4	45	57.4
vs Arizona St.	11/26/2021	62-52	W	18-59	.305	3-19	.158	13-18	.722	15	26	41	34.8	23	8	16	6	5	52	56.5
vs Houston	11/27/2021	74-58	W	22-73	.301	10-23	.435	4-5	.800	12	23	35	34.9	19	8	12	6	7	58	56.7
Morehead St.	11/30/2021	73-28	W	11-55	.200	3-21	.143	3-4	.750	10	17	27	33.9	14	5	15	3	8	28	53.1
Missouri	12/04/2021	70-68	W	26-61	.426	8-24	.333	8-14	.571	9	29	38	34.3	27	13	15	0	2	68	54.8
Alcorn	12/08/2021	94-40	W	16-54	.296	6-20	.300	2-2	1.000	6	20	26	33.5	17	11	18	0	1	40	53.3
vs Michigan	12/19/2021	68-74	Lot	25-68	.368	4-14	.286	20-24	.833	18	32	50	35.0	19	9	16	3	8	74	55.2
North Texas	12/29/2021	86-65	W	23-61	.377	6-18	.333	13-21	.619	6	22	28	34.4	15	6	13	1	6	65	56.0
at Kansas St.	01/02/2022	59-68	L	23-45	.511	4-13	.308	18-24	.750	6	24	30	34.1	19	16	23	4	7	68	56.9
at Oklahoma	01/12/2022	77-83	L	28-61	.459	14-27	.519	13-18	.722	9	19	28	33.6	21	23	14	3	10	83	58.8
at Kansas	01/16/2022	82-79	W	28-56	.500	10-19	.526	13-16	.813	10	29	39	34.0	19	13	16	4	4	79	60.1
Total		902		324-890	.364	92-303	.304	162-212	.764	156	354	510	34.0	296	168	242	41	95	902	60.1
Baylor		1125		405-916	.442	104-308	.338	211-297	.710	183	423	606	40.4	213	247	207	56	104	1125	75.0

Opponents Averages

Games Played	Points/game	FG Pct	3FG Pct	FT Pct	Rebounds/game	Assists/game	Turnovers/game	Assist/Turnover ratio	Steals/game	Blocks/game
15	60.1	36.4	30.4	76.4	34.0	11.2	16.1	0.7	6.3	2.7

2021-22 SUPERLATIVES

Baylor - Game Highs

POINTS	94	Alcorn (12/08/2021)
	86	North Texas (12/29/2021)
	82	at Kansas (01/16/2022)
	81	at UT Arlington (11/11/2021)
	78	New Orleans (11/15/2021)
FIELD GOALS MADE	35	North Texas (12/29/2021)
	33	Alcorn (12/08/2021)
	33	at Maryland (11/21/2021)
FIELD GOAL ATTEMPTS	72	at Kansas (01/16/2022)
	72	at Maryland (11/21/2021)
FIELD GOAL PERCENTAGE	.536 (30-56)	New Orleans (11/15/2021)
	.524 (33-63)	Alcorn (12/08/2021)
3 PT FG MADE	14	at Kansas (01/16/2022)
	13	Morehead St. (11/30/2021)
3 PT FG ATTEMPTS	29	at Kansas (01/16/2022)
	29	Morehead St. (11/30/2021)
3 PT FG PERCENTAGE	.483 (14-29)	at Kansas (01/16/2022)
	.458 (11-24)	Alcorn (12/08/2021)
FREE THROWS MADE	24	vs Houston (N) (11/27/2021)
	21	Texas St. (11/09/2021)
FREE THROW ATTEMPTS	32	Missouri (12/04/2021)
	31	vs Houston (N) (11/27/2021)
FREE THROW PERCENTAGE	.824 (14-17)	at UT Arlington (11/11/2021)
	.810 (17-21)	Alcorn (12/08/2021)
REBOUNDS	50	vs Houston (N) (11/27/2021)
	48	Morehead St. (11/30/2021)
ASSISTS	26	Alcorn (12/08/2021)
	24	at Kansas (01/16/2022)
STEALS	11	Alcorn (12/08/2021)
	10	at Kansas St. (01/02/2022)
BLOCKED SHOTS	6	vs Houston (N) (11/27/2021)
	6	vs Arizona St. (N) (11/26/2021)
	6	at UT Arlington (11/11/2021)
TURNOVERS	22	at Kansas St. (01/02/2022)
	18	at Oklahoma (01/12/2022)
FOULS	22	at Kansas St. (01/02/2022)
	21	North Texas (12/29/2021)

Opponent - Game Highs

POINTS	83	at Oklahoma (01/12/2022)
	79	at Kansas (01/16/2022)
	79	at Maryland (11/21/2021)
	74	vs Michigan (N) (12/19/2021)
	70	Texas St. (11/09/2021)
FIELD GOALS MADE	28	at Kansas (01/16/2022)
	28	at Oklahoma (01/12/2022)
	28	at Maryland (11/21/2021)
FIELD GOAL ATTEMPTS	73	vs Houston (N) (11/27/2021)
	71	Texas St. (11/09/2021)
FIELD GOAL PERCENTAGE	.511 (23-45)	at Kansas St. (01/02/2022)
	.500 (28-56)	at Kansas (01/16/2022)
3 PT FG MADE	14	at Oklahoma (01/12/2022)
	10	at Kansas (01/16/2022)
	10	vs Houston (N) (11/27/2021)
3 PT FG ATTEMPTS	34	Texas St. (11/09/2021)
	27	at Oklahoma (01/12/2022)
3 PT FG PERCENTAGE	.526 (10-19)	at Kansas (01/16/2022)
	.519 (14-27)	at Oklahoma (01/12/2022)
FREE THROWS MADE	20	vs Michigan (N) (12/19/2021)
	18	at Kansas St. (01/02/2022)
FREE THROW ATTEMPTS	24	at Kansas St. (01/02/2022)
	24	vs Michigan (N) (12/19/2021)
FREE THROW PERCENTAGE	1.000 (5-5)	vs Fordham (N) (11/25/2021)
	1.000 (2-2)	Alcorn (12/08/2021)
REBOUNDS	50	vs Michigan (N) (12/19/2021)
	41	vs Arizona St. (N) (11/26/2021)
ASSISTS	23	at Oklahoma (01/12/2022)
	23	Texas St. (11/09/2021)
STEALS	11	New Orleans (11/15/2021)
	10	at Oklahoma (01/12/2022)
BLOCKED SHOTS	6	vs Houston (N) (11/27/2021)
	6	vs Arizona St. (N) (11/26/2021)
TURNOVERS	25	New Orleans (11/15/2021)
	23	at Kansas St. (01/02/2022)
FOULS	29	Texas St. (11/09/2021)
	27	Missouri (12/04/2021)

Baylor - Game Lows

POINTS	59	at Kansas St. (01/02/2022)
	62	vs Arizona St. (N) (11/26/21)
	68	vs Michigan (N) (12/19/2021)
	68	vs Fordham (N) (11/25/2021)
	70	Missouri (12/04/2021)
FIELD GOALS MADE	21	at Kansas St. (01/02/2022)
	21	vs Arizona St. (N) (11/26/21)
FIELD GOAL ATTEMPTS	54	at Kansas St. (01/02/2022)
	55	Morehead St. (11/30/2021)
FIELD GOAL PERCENTAGE	.368 (21-57)	vs Arizona St. (N) (11/26/21)
	.379 (22-58)	vs Houston (N) (11/27/2021)
3 PT FG MADE	2	vs Arizona St. (N) (11/26/21)
	4	at Oklahoma (01/12/2022)
	4	vs Michigan (N) (12/19/2021)
	4	Missouri (12/04/2021)
	4	Texas St. (11/09/2021)
3 PT FG ATTEMPTS	9	vs Arizona St. (N) (11/26/21)
	11	at Oklahoma (01/12/2022)
3 PT FG PERCENTAGE	.160 (4-25)	Texas St. (11/09/2021)
	.222 (4-18)	vs Michigan (N) (12/19/2021)
	.222 (2-9)	vs Arizona St. (N) (11/26/21)
FREE THROWS MADE	4	at Maryland (11/21/2021)
	7	North Texas (12/29/2021)
FREE THROW ATTEMPTS	5	at Maryland (11/21/2021)
	10	North Texas (12/29/2021)
FREE THROW PERCENTAGE	.563 (18-32)	Missouri (12/04/2021)
	.632 (12-19)	New Orleans (11/15/2021)
REBOUNDS	27	at Kansas St. (01/02/2022)
	35	vs Michigan (N) (12/19/2021)
	35	Missouri (12/04/2021)
	35	New Orleans (11/15/2021)
ASSISTS	9	vs Michigan (N) (12/19/2021)
	11	at Kansas St. (01/02/2022)
	11	vs Arizona St. (N) (11/26/21)
STEALS	3	at Maryland (11/21/2021)
	4	at UT Arlington (11/11/2021)
BLOCKED SHOTS	1	vs Fordham (N) (11/25/2021)
	2	at Oklahoma (01/12/2022)
	2	North Texas (12/29/2021)
	2	Missouri (12/04/2021)

Opponent - Game Lows

POINTS	28	Morehead St. (11/30/2021)
	39	New Orleans (11/15/2021)
	40	Alcorn (12/08/2021)
	45	vs Fordham (N) (11/25/2021)
	52	vs Arizona St. (N) (11/26/21)
FIELD GOALS MADE	11	Morehead St. (11/30/2021)
	13	New Orleans (11/15/2021)
FIELD GOAL ATTEMPTS	40	New Orleans (11/15/2021)
	45	at Kansas St. (01/02/2022)
FIELD GOAL PERCENTAGE	.200 (11-55)	Morehead St. (11/30/2021)
	.296 (16-54)	Alcorn (12/08/2021)
3 PT FG MADE	1	at UT Arlington (11/11/2021)
	2	New Orleans (11/15/2021)
3 PT FG ATTEMPTS	12	New Orleans (11/15/2021)
	13	at Kansas St. (01/02/2022)
3 PT FG PERCENTAGE	.059 (1-17)	at UT Arlington (11/11/2021)
	.143 (3-21)	Morehead St. (11/30/2021)
FREE THROWS MADE	2	Alcorn (12/08/2021)
	3	Morehead St. (11/30/2021)
FREE THROW ATTEMPTS	2	Alcorn (12/08/2021)
	4	Morehead St. (11/30/2021)
FREE THROW PERCENTAGE	.571 (8-14)	Missouri (12/04/2021)
	.619 (13-21)	North Texas (12/29/2021)
REBOUNDS	24	New Orleans (11/15/2021)
	26	Alcorn (12/08/2021)
ASSISTS	3	New Orleans (11/15/2021)
	5	Morehead St. (11/30/2021)
STEALS	1	Alcorn (12/08/2021)
	2	Missouri (12/04/2021)
BLOCKED SHOTS	0	Alcorn (12/08/2021)
	0	Missouri (12/04/2021)
	0	New Orleans (11/15/2021)
	0	Texas St. (11/09/2021)
TURNOVERS	9	at Maryland (11/21/2021)
	12	vs Houston (N) (11/27/2021)
FOULS	13	at Maryland (11/21/2021)
	14	Morehead St. (11/30/2021)

2021-22 SUPERLATIVES

Baylor - Individual Game Highs

POINTS	30		NaLyssa Smith at Oklahoma (01/12/2022)
	30		NaLyssa Smith at Maryland (11/21/2021)
	29		Jordan Lewis at Maryland (11/21/2021)
	28		NaLyssa Smith vs North Texas (12/29/2021)
	25		Sarah Andrews at Kansas (01/16/2022)
	25		NaLyssa Smith vs Alcorn (12/08/2021)
	25		NaLyssa Smith vs Missouri (12/04/2021)
FIELD GOALS MADE	14		NaLyssa Smith vs North Texas (12/29/2021)
	14		NaLyssa Smith at Maryland (11/21/2021)
FIELD GOAL ATTEMPTS	25		NaLyssa Smith at Maryland (11/21/2021)
	22		NaLyssa Smith at Kansas (01/16/2022)
FIELD GOAL PERCENTAGE (min 5 made)	.917	(11-12)	Queen Egbo vs New Orleans (11/15/2021)
	.889	(8-9)	NaLyssa Smith at UT Arlington (11/11/2021)
3 PT FG MADE	7		Sarah Andrews at Kansas (01/16/2022)
	6		Ja'Mee Asberry at Kansas (01/16/2022)
	6		Ja'Mee Asberry vs Alcorn (12/08/2021)
	6		Sarah Andrews vs Morehead St. (11/30/2021)
3 PT FG ATTEMPTS	12		Ja'Mee Asberry vs Morehead St. (11/30/2021)
	11		Ja'Mee Asberry at Kansas (01/16/2022)
	11		Ja'Mee Asberry at UT Arlington (11/11/2021)
3 PT FG PERCENTAGE (min 2 made)	1.000	(2-2)	Ja'Mee Asberry at Oklahoma (01/12/2022)
	1.000	(2-2)	Kamaria McDaniel vs Morehead St. (11/30/2021)
	1.000	(2-2)	Sarah Andrews vs Fordham (N) (11/25/2021)
FREE THROWS MADE	11		Jordan Lewis vs Michigan (N) (12/19/2021)
	9		Caitlin Bickle vs Alcorn (12/08/2021)
	9		Jordan Lewis vs Arizona St. (N) (11/26/2021)
FREE THROW ATTEMPTS	13		NaLyssa Smith vs Houston (N) (11/27/2021)
	12		Jordan Lewis vs Arizona St. (N) (11/26/2021)
FREE THROW PERCENTAGE (min 3 made)	1.000	(11-11)	Jordan Lewis vs Michigan (N) (12/19/2021)
	1.000	(7-7)	NaLyssa Smith vs New Orleans (11/15/2021)
	1.000	(5-5)	NaLyssa Smith at UT Arlington (11/11/2021)
	1.000	(4-4)	NaLyssa Smith vs Morehead St. (11/30/2021)
	1.000	(4-4)	Ja'Mee Asberry vs Houston (N) (11/27/2021)
	1.000	(4-4)	Queen Egbo vs Texas St. (11/09/2021)
	1.000	(3-3)	Caitlin Bickle vs Morehead St. (11/30/2021)
	1.000	(3-3)	Caitlin Bickle at UT Arlington (11/11/2021)
REBOUNDS	19		NaLyssa Smith vs Houston (N) (11/27/2021)
	17		NaLyssa Smith vs Missouri (12/04/2021)
ASSISTS	9		Sarah Andrews vs Houston (N) (11/27/2021)
	8		Jordan Lewis at Kansas (01/16/2022)
	8		Sarah Andrews at Maryland (11/21/2021)
STEALS	5		Jordan Lewis at Kansas St. (01/02/2022)
	4		Jordan Lewis vs Michigan (N) (12/19/2021)
BLOCKED SHOTS	3		NaLyssa Smith vs Michigan (N) (12/19/2021)
	3		Queen Egbo vs Alcorn (12/08/2021)
	3		Queen Egbo vs Houston (N) (11/27/2021)
	3		Queen Egbo vs Arizona St. (N) (11/26/2021)
	3		Queen Egbo vs New Orleans (11/15/2021)
TURNOVERS	6		NaLyssa Smith vs Fordham (N) (11/25/2021)
	5		Jordan Lewis at Oklahoma (01/12/2022)
	5		Caitlin Bickle at Kansas St. (01/02/2022)
	5		Caitlin Bickle vs North Texas (12/29/2021)
	5		Sarah Andrews at Maryland (11/21/2021)
	5		NaLyssa Smith at UT Arlington (11/11/2021)

2021-22 BOX SCORES



Official Basketball Box Score - Final
Texas St. at Baylor
11/09/21 Ferrell Center, Waco
2021-22 Women's Basketball

Game Time: 7:00 PM
Game Duration: 2:00
Attendance: 4,180

Officials: Roy Gubeyan, Chaney Muench, Bill Larence

Texas St. - 70										Record: 0-1																																																																																																																																																																																																																																																																																																																																																																																																																																																																																																																																																																																																																																																																																																																																																																																																																																																																																																																																																																																																																																																																																																																																																																																																																																																																																																																																																																																																																																																																																																																																																																																																																																																																																																																																																																																																																																																																																																																																																																																																																																																																																																																																																																																																										
NO. Name	Min	FG M-A	3P M-A	FT M-A	Rebounds OR DR TOT	Fouls PF	TP	AS	TO	ST	Blocks BS BA	+/-	Shooting By Period																																																																																																																																																																																																																																																																																																																																																																																																																																																																																																																																																																																																																																																																																																																																																																																																																																																																																																																																																																																																																																																																																																																																																																																																																																																																																																																																																																																																																																																																																																																																																																																																																																																																																																																																																																																																																																																																																																																																																																																																																																																																																																																																																																																																							
20 Chelsea Johnson	F 08:01	0-0	0-0	0-0	0 1 1	3	0	0	0	1	0	0	-10	1st FG%	3-12	25.0%	3PT%	0-7	0.0%	FT%	1-2	50%	2nd FG%	6-20	30.0%	3PT%	3-11	27.3%	FT%	2-2	100%	3rd FG%	10-18	55.6%	3PT%	3-5	60.0%	FT%	0-0	0%	4th FG%	8-21	38.1%	3PT%	3-11	27.3%	FT%	4-4	100%	GM FG%	27-71	38.0%	3PT%	9-34	26.5%	FT%	7-8	87.5%																																																																																																																																																																																																																																																																																																																																																																																																																																																																																																																																																																																																																																																																																																																																																																																																																																																																																																																																																																																																																																																																																																																																																																																																																																																																																																																																																																																																																																																																																																																																																																																																																																																																																																																																																																																																																																																																																																																																																																																																																																																																																																																																																										
32 Da'Nasia Hood	F 29:23	8-21	4-10	0-0	0 6 6	4	1	20	2	2	4	0	-1	1st FG%	8-21	38.1%	3PT%	3-11	27.3%	FT%	4-4	100%	2nd FG%	6-20	30.0%	3PT%	3-11	27.3%	FT%	2-2	100%	3rd FG%	10-18	55.6%	3PT%	3-5	60.0%	FT%	0-0	0%	4th FG%	8-21	38.1%	3PT%	3-11	27.3%	FT%	4-4	100%	GM FG%	27-71	38.0%	3PT%	9-34	26.5%	FT%	7-8	87.5%																																																																																																																																																																																																																																																																																																																																																																																																																																																																																																																																																																																																																																																																																																																																																																																																																																																																																																																																																																																																																																																																																																																																																																																																																																																																																																																																																																																																																																																																																																																																																																																																																																																																																																																																																																																																																																																																																																																																																																																																																																																																																																																																																										
3 Kennedy Taylor	G 36:02	2-12	1-7	2-2	2 0 2	5	2	7	9	5	0	0	-3	1st FG%	3-12	25.0%	3PT%	0-7	0.0%	FT%	1-2	50%	2nd FG%	6-20	30.0%	3PT%	3-11	27.3%	FT%	2-2	100%	3rd FG%	10-18	55.6%	3PT%	3-5	60.0%	FT%	0-0	0%	4th FG%	8-21	38.1%	3PT%	3-11	27.3%	FT%	4-4	100%	GM FG%	27-71	38.0%	3PT%	9-34	26.5%	FT%	7-8	87.5%																																																																																																																																																																																																																																																																																																																																																																																																																																																																																																																																																																																																																																																																																																																																																																																																																																																																																																																																																																																																																																																																																																																																																																																																																																																																																																																																																																																																																																																																																																																																																																																																																																																																																																																																																																																																																																																																																																																																																																																																																																																																																																																																																										
5 Jo'Nah Johnson	G 33:31	4-13	3-10	0-0	0 2 2	1	1	11	5	3	1	0	0	1st FG%	3-12	25.0%	3PT%	0-7	0.0%	FT%	1-2	50%	2nd FG%	6-20	30.0%	3PT%	3-11	27.3%	FT%	2-2	100%	3rd FG%	10-18	55.6%	3PT%	3-5	60.0%	FT%	0-0	0%	4th FG%	8-21	38.1%	3PT%	3-11	27.3%	FT%	4-4	100%	GM FG%	27-71	38.0%	3PT%	9-34	26.5%	FT%	7-8	87.5%																																																																																																																																																																																																																																																																																																																																																																																																																																																																																																																																																																																																																																																																																																																																																																																																																																																																																																																																																																																																																																																																																																																																																																																																																																																																																																																																																																																																																																																																																																																																																																																																																																																																																																																																																																																																																																																																																																																																																																																																																																																																																																																																																										
15 Ja'Kayla Bowie	G 27:22	3-7	0-3	0-0	0 1 7	8	5	1	6	3	2	0	-16	1st FG%	3-12	25.0%	3PT%	0-7	0.0%	FT%	1-2	50%	2nd FG%	6-20	30.0%	3PT%	3-11	27.3%	FT%	2-2	100%	3rd FG%	10-18	55.6%	3PT%	3-5	60.0%	FT%	0-0	0%	4th FG%	8-21	38.1%	3PT%	3-11	27.3%	FT%	4-4	100%	GM FG%	27-71	38.0%	3PT%	9-34	26.5%	FT%	7-8	87.5%																																																																																																																																																																																																																																																																																																																																																																																																																																																																																																																																																																																																																																																																																																																																																																																																																																																																																																																																																																																																																																																																																																																																																																																																																																																																																																																																																																																																																																																																																																																																																																																																																																																																																																																																																																																																																																																																																																																																																																																																																																																																																																																																																										
55 Jaeda Reed	15:48	5-7	0-0	0-0	0 5 5	3	1	10	1	0	2	0	-9	1st FG%	3-12	25.0%	3PT%	0-7	0.0%	FT%	1-2	50%	2nd FG%	6-20	30.0%	3PT%	3-11	27.3%	FT%	2-2	100%	3rd FG%	10-18	55.6%	3PT%	3-5	60.0%	FT%	0-0	0%	4th FG%	8-21	38.1%	3PT%	3-11	27.3%	FT%	4-4	100%	GM FG%	27-71	38.0%	3PT%	9-34	26.5%	FT%	7-8	87.5%																																																																																																																																																																																																																																																																																																																																																																																																																																																																																																																																																																																																																																																																																																																																																																																																																																																																																																																																																																																																																																																																																																																																																																																																																																																																																																																																																																																																																																																																																																																																																																																																																																																																																																																																																																																																																																																																																																																																																																																																																																																																																																																																																										
4 Sierra Dickson	22:34	1-3	0-0	3-4	1 3 4	3	5	5	3	0	0	0	-2	1st FG%	3-12	25.0%	3PT%	0-7	0.0%	FT%	1-2	50%	2nd FG%	6-20	30.0%	3PT%	3-11	27.3%	FT%	2-2	100%	3rd FG%	10-18	55.6%	3PT%	3-5	60.0%	FT%	0-0	0%	4th FG%	8-21	38.1%	3PT%	3-11	27.3%	FT%	4-4	100%	GM FG%	27-71	38.0%	3PT%	9-34	26.5%	FT%	7-8	87.5%																																																																																																																																																																																																																																																																																																																																																																																																																																																																																																																																																																																																																																																																																																																																																																																																																																																																																																																																																																																																																																																																																																																																																																																																																																																																																																																																																																																																																																																																																																																																																																																																																																																																																																																																																																																																																																																																																																																																																																																																																																																																																																																																																										
33 Gabby Standler	09:14	1-4	1-4	0-0	0 0 0	2	0	3	0	0	1	0	-9	1st FG%	3-12	25.0%	3PT%	0-7	0.0%	FT%	1-2	50%	2nd FG%	6-20	30.0%	3PT%	3-11	27.3%	FT%	2-2	100%	3rd FG%	10-18	55.6%	3PT%	3-5	60.0%	FT%	0-0	0%	4th FG%	8-21	38.1%	3PT%	3-11	27.3%	FT%	4-4	100%	GM FG%	27-71	38.0%	3PT%	9-34	26.5%	FT%	7-8	87.5%																																																																																																																																																																																																																																																																																																																																																																																																																																																																																																																																																																																																																																																																																																																																																																																																																																																																																																																																																																																																																																																																																																																																																																																																																																																																																																																																																																																																																																																																																																																																																																																																																																																																																																																																																																																																																																																																																																																																																																																																																																																																																																																																																										
25 Lauryn Thompson	15:15	3-4	0-0	2-2	1 2 3	2	1	8	0	2	0	0	4	1st FG%	3-12	25.0%	3PT%	0-7	0.0%	FT%	1-2	50%	2nd FG%	6-20	30.0%	3PT%	3-11	27.3%	FT%	2-2	100%	3rd FG%	10-18	55.6%	3PT%	3-5	60.0%	FT%	0-0	0%	4th FG%	8-21	38.1%	3PT%	3-11	27.3%	FT%	4-4	100%	GM FG%	27-71	38.0%	3PT%	9-34	26.5%	FT%	7-8	87.5%																																																																																																																																																																																																																																																																																																																																																																																																																																																																																																																																																																																																																																																																																																																																																																																																																																																																																																																																																																																																																																																																																																																																																																																																																																																																																																																																																																																																																																																																																																																																																																																																																																																																																																																																																																																																																																																																																																																																																																																																																																																																																																																																																										
40 Nicole Leff	02:50	0-0	0-0	0-0	1 0 1	1	0	0	0	1	0	0	-2	1st FG%	3-12	25.0%	3PT%	0-7	0.0%	FT%	1-2	50%	2nd FG%	6-20	30.0%	3PT%	3-11	27.3%	FT%	2-2	100%	3rd FG%	10-18	55.6%	3PT%	3-5	60.0%	FT%	0-0	0%	4th FG%	8-21	38.1%	3PT%	3-11	27.3%	FT%	4-4	100%	GM FG%	27-71	38.0%	3PT%	9-34	26.5%	FT%	7-8	87.5%																																																																																																																																																																																																																																																																																																																																																																																																																																																																																																																																																																																																																																																																																																																																																																																																																																																																																																																																																																																																																																																																																																																																																																																																																																																																																																																																																																																																																																																																																																																																																																																																																																																																																																																																																																																																																																																																																																																																																																																																																																																																																																																																																										
Team					4 0 4		0	0						1st FG%	8-21	38.1%	3PT%	3-11	27.3%	FT%	4-4	100%	2nd FG%	6-20	30.0%	3PT%	3-11	27.3%	FT%	2-2	100%	3rd FG%	10-18	55.6%	3PT%	3-5	60.0%	FT%	0-0	0%	4th FG%	8-21	38.1%	3PT%	3-11	27.3%	FT%	4-4	100%	GM FG%	27-71	38.0%	3PT%	9-34	26.5%	FT%	7-8	87.5%																																																																																																																																																																																																																																																																																																																																																																																																																																																																																																																																																																																																																																																																																																																																																																																																																																																																																																																																																																																																																																																																																																																																																																																																																																																																																																																																																																																																																																																																																																																																																																																																																																																																																																																																																																																																																																																																																																																																																																																																																																																																																																																																																										
Totals		27-71	9-34	7-8	10 26 36	29 12	70	23	16	8	0	4	-7	1st FG%	8-21	38.1%	3PT%	3-11	27.3%	FT%	4-4	100%	2nd FG%	6-20	30.0%	3PT%	3-11	27.3%	FT%	2-2	100%	3rd FG%	10-18	55.6%	3PT%	3-5	60.0%	FT%	0-0	0%	4th FG%	8-21	38.1%	3PT%	3-11	27.3%	FT%	4-4	100%	GM FG%	27-71	38.0%	3PT%	9-34	26.5%	FT%	7-8	87.5%																																																																																																																																																																																																																																																																																																																																																																																																																																																																																																																																																																																																																																																																																																																																																																																																																																																																																																																																																																																																																																																																																																																																																																																																																																																																																																																																																																																																																																																																																																																																																																																																																																																																																																																																																																																																																																																																																																																																																																																																																																																																																																																																																										
													Technical Fouls:NONE										Dead Ball Rebounds: 1.1																																																																																																																																																																																																																																																																																																																																																																																																																																																																																																																																																																																																																																																																																																																																																																																																																																																																																																																																																																																																																																																																																																																																																																																																																																																																																																																																																																																																																																																																																																																																																																																																																																																																																																																																																																																																																																																																																																																																																																																																																																																																																																																																																																																													

2021-22 BOX SCORES



Official Basketball Box Score - Final

Fordham at Baylor

11/25/21 Hard Rock Hotel Cancun, MX
2021-22 Women's Basketball

Game Time: 11:00 AM

Game Duration: 1:40

Attendance: 103

Officials: Nick Marshall, Erika Herriman, Adrienne Gilmore

Fordham - 45

Record: 3-2

NO. Name	Min	FG M-A	3P M-A	FT M-A	Rebounds OR DR TOT	Fouls PF FD	TP	AS	TO	ST	Blocks BS BA	+/-
24 Kaitlyn Downey	F 34:10	2-7	0-5	0-0	1 0 1	3 3	4	3	1	1	3	0 -28
43 Megan Jonassen	F 25:35	2-5	0-0	2-2	2 2 4	3 2	6	0	2	0	1	0 -16
2 Anna DeWolfe	G 36:25	4-15	2-7	0-0	0 7 7	1 0	10	3	8	2	0	0 -24
3 Asiah Dingle	G 30:18	2-10	0-1	0-0	1 2 3	5 3	4	1	4	0	0	0 -25
20 Kendell Heremia	G 24:37	4-8	3-6	3-3	0 6 6	0 1	2	14	0	2	0	0 -15
30 Maranda Nyborg	09:12	0-2	0-0	0-0	0 0 0	1 0	0	0	1	0	0	1 6
13 Sarah Karpell	12:35	0-0	0-0	0-0	1 1 2	2 0	0	0	1	1	0	0 -6
14 Vilisi Tavui	01:44	0-0	0-0	0-0	0 1 1	0 0	0	0	0	0	0	0 1
10 Millie Prior	06:44	0-1	0-0	0-0	2 0 2	0 2	0	2	0	0	0	0 -2
1 Matilda Flood	13:52	2-7	0-0	0-0	0 3 3	1 2	4	0	0	0	0	0 0
5 Catherine Polisano	02:24	1-1	1-1	0-0	0 0 0	1 0	3	0	0	0	0	0 0
12 Edona Thaqi	02:24	0-0	0-0	0-0	2 0 2	0 1	0	1	0	0	0	0 0
Team					0 1 1		0		1			
Totals		17-56	6-22	5-5	9 23 32	20 13	45	10	20	4	4	1 -23

Technical Fouls: NONE

Dead Ball Rebounds: 1, 0

Baylor - 68

Record: 4-1

NO. Name	Min	FG M-A	3P M-A	FT M-A	Rebounds OR DR TOT	Fouls PF FD	TP	AS	TO	ST	Blocks BS BA	+/-
1 NalYssa Smith	F 32:44	8-16	0-1	3-5	5 10 15	3 5	19	1	6	1	0	1 23
4 Queen Egbo	C 24:06	0-9	0-0	2-2	1 7 8	1 2	2	1	2	1	0	2 12
3 Jordan Lewis	G 32:30	6-9	1-3	2-4	1 2 3	2 7	15	6	1	2	0	0 23
21 Ja'Mee Asberry	G 29:24	4-6	2-4	0-0	0 1 1	1 1	10	1	1	0	0	0 24
24 Sarah Andrews	G 31:36	4-8	2-2	0-0	0 1 1	1 1	10	2	0	3	0	1 23
22 Kamaria McDaniel	13:48	0-1	0-1	1-2	1 2 3	1 1	1	1	1	0	0	0 0
51 Caitlin Bickle	19:49	3-7	1-3	1-1	5 6 1	1 1	8	0	4	0	0	0 7
10 Jaden Owens	10:39	0-1	0-1	2-2	0 0 0	2 1	1	0	1	0	0	0 0
25 Kendra Gillispie	03:21	0-1	0-0	1-2	0 0 0	1 1	2	0	1	0	1	0 4
11 Andrea Katramados	02:01	0-0	0-0	0-0	0 0 0	0 0	0	0	0	0	0	0 -1
Team					2 1 3		0		0			
Totals		25-58	6-15	12-18	12 29 41	13 20	68	12	17	7	1	4 23

Technical Fouls: NONE

Dead Ball Rebounds: 4, 0

	FOR	BAY
Biggest lead	6 (2 nd 0:51)	26 (4 th 2:01)
Best Scoring Run	7 (2 nd 0:51)	14 (4 th 2:01)
Lead Changes	6	
Times Tied	1	
Time with Lead	07:36	31:10

Points from	FOR	BAY
Turnovers	10	12
Paint	14	24
Second Chance	10	14
Fast Breaks	4	12
Bench	7	12

Period by Period Scoring	1st	2nd	3rd	4th	TOT
FOR	11	13	10	11	45
BAY	14	6	24	24	68



Official Basketball Box Score - Final

Baylor at Houston

11/20/21 Ferrell Center, Waco
2021-22 Women's Basketball

Game Time: 1:30 PM

Game Duration: 1:36

Attendance: 129

Officials: Nick Marshall, Amy Komenko, Erika Herriman

Baylor - 74

Record: 5-1

NO. Name	Min	FG M-A	3P M-A	FT M-A	Rebounds OR DR TOT	Fouls PF FD	TP	AS	TO	ST	Blocks BS BA	+/-
1 NalYssa Smith	F 27:36	6-14	1-1	8-13	6 13 19	1 7	21	1	0	0	2	2 5
4 Queen Egbo	C 24:39	6-12	0-0	4-6	2 6 8	4 4	16	1	2	0	3	3 14
3 Jordan Lewis	G 27:51	2-6	1-3	2-2	0 2 2	1 1	7	4	1	3	0	1 17
21 Ja'Mee Asberry	G 36:35	3-10	2-7	4-4	2 2 4	1 3	12	0	3	3	0	0 21
24 Sarah Andrews	G 28:09	2-7	1-1	2-2	0 3 3	0 1	7	9	1	1	0	0 13
10 Jaden Owens	14:03	0-3	0-2	2-2	0 1 1	2 1	2	0	2	1	0	0 -2
51 Caitlin Bickle	20:19	3-4	1-1	2-2	1 5 6	1 1	9	1	1	0	0	0 23
22 Kamaria McDaniel	11:54	0-1	0-0	0-0	0 1 1	0 1	0	0	1	0	0	0 3
25 Kendra Gillispie	07:26	0-1	0-0	0-0	0 1 1	0 0	0	0	0	0	0	0 -10
40 Andrea Katramados	01:37	0-0	0-0	0-0	0 0 0	0 0	0	0	0	0	1	0 -4
Team					3 2 5		0		1			
Totals		22-58	6-15	24-31	14 36 50	10 19	74	16	12	8	6	6 16

Technical Fouls: NONE

Dead Ball Rebounds: 5, 2

Houston - 58

Record: 3-4

NO. Name	Min	FG M-A	3P M-A	FT M-A	Rebounds OR DR TOT	Fouls PF FD	TP	AS	TO	ST	Blocks BS BA	+/-
1 Brija Patterson	F 31:08	4-15	1-4	1-1	1 3 4	4 0	1	1	0	0	0	0 -10
30 Tatyana Hill	F 12:56	0-3	0-0	0-0	0 2 2	1 1	2	1	0	1	0	1 -3
5 Dymond Gladney	G 19:20	1-1	0-0	0-0	0 2 2	1 1	2	1	0	0	0	0 -11
10 Britney Onyeje	G 28:28	2-11	2-7	0-0	0 1 1	1 1	6	0	1	3	2	1 -4
14 Laila Blair	G 33:06	10-21	6-10	2-2	0 3 3	2 3	23	1	4	1	0	0 -2
23 Julia Blackshell-Fair	15:17	0-0	0-0	0-0	0 1 1	1 0	0	1	0	0	0	0 -18
2 Tiara Young	15:33	3-9	1-2	0-0	1 0 1	2 0	7	0	1	1	0	0 20
45 Fatou Diagne	23:48	2-8	0-0	0-0	5 7 12	2 2	4	0	1	1	4	3 -19
34 Kamryn Jones	08:52	0-3	0-0	0-0	1 0 1	1 1	0	1	1	0	0	1 -6
0 Eryka Sidney	08:16	0-0	0-0	1-2	0 0 0	1 0	1	3	1	0	0	0 7
44 Jazmaine Lewis	03:16	0-2	0-0	0-0	0 1 1	0 0	0	0	0	0	0	0 0
Team					3 2 5		0		0			
Totals		22-73	10-23	4-5	12 23 35	19 10	58	8	12	7	6	6 -16

Technical Fouls: NONE

Dead Ball Rebounds: 2, 1

	Bears	Coogs
Biggest lead	28 (4 th 6:27)	8 (1 st 7:01)
Best Scoring Run	19 (3 rd 5:13)	9 (4 th 4:47)
Lead Changes	1	
Times Tied	4	
Time with Lead	23:24	14:30

Points from	Bears	Coogs
Turnovers	14	16
Paint	26	22
Second Chance	16	10
Fast Breaks	12	9
Bench	11	12

Period by Period Scoring	1st	2nd	3rd	4th	TOT
Bears	14	20	17	23	74
Coogs	17	10	5	26	58

2021-22 BOX SCORES



Official Basketball Box Score - Final
Missouri at Baylor
12/04/21 Ferrell Center, Waco
2021-22 Women's Basketball

Game Time: 7:00 PM
Game Duration: 2:17
Attendance: 4,160

Officials: Brian Hal, Julie Krommerhook, Brian Garland

Missouri - 68

Record: 8-1

NO.	Name	Min	FG	3P	FT	Rebounds	Fouls	TP	AS	TO	ST	Blocks	+/-
			M-A	M-A	M-A	OR DR TOT	PF FD					BS BA	
43	Hayley Frank	F 34:54	3-8	2-4	0-0	2 0 2	4 1	8	4	1	0	0	-2
1	Lauren Hansen	G 25:06	4-11	2-6	0-1	0 2 2	2 1	10	0	3	1	0	-1
4	Mama Dembele	G 10:19	0-2	0-1	0-0	1 2 3	5 0	0	1	2	0	0	1
13	Haley Troup	G 37:25	6-14	2-5	2-2	0 0 0	3 4	16	6	2	0	0	-6
33	Aijha Blackwell	G 28:08	8-14	1-5	3-8	1 15 16	5 5	20	1	3	1	0	-6
30	Izzy Higginbottom	24:45	2-4	1-2	3-3	2 0 2	4 3	8	1	1	0	0	1
00	LaDazhia Williams	18:15	3-5	0-0	0-0	1 4 5	2 0	6	0	2	0	0	3
2	Sara-Rose Smith	17:37	0-2	0-1	0-0	0 4 4	2 0	0	0	1	0	0	0
32	Jayla Kelly	01:35	0-1	0-0	0-0	0 0 0	1 0	0	0	0	0	0	0
25	Skylah Travis	01:15	0-0	0-0	0-0	0 1 1	0 0	0	0	0	0	0	0
24	Kiya Dorroh	00:41	0-0	0-0	0-0	0 0 0	0 0	0	0	0	0	0	0
Team						2 1 3		0	0				
Totals			26-61	8-24	8-14	9 29 38	27 15	68	13	15	2	0	2 -2

Technical Fouls: NONE

Shooting By Period	1st	2nd	3rd	4th	OT
1st FG%	5-13 38.5%				
3PT%	2-7 28.6%				
FT%	0-1 0%				
2nd FG%	7-17 41.2%				
3PT%	1-5 20.0%				
FT%	0-0 0%				
3rd FG%	8-15 53.3%				
3PT%	1-4 25.0%				
FT%	8-9 88.9%				
4th FG%	6-16 37.5%				
3PT%	4-8 50.0%				
FT%	0-4 0%				
GM FG%	26-61 42.6%				
3PT%	8-24 33.3%				
FT%	8-14 57.1%				

Dead Ball Rebounds: 2, 1

Baylor - 70

Record: 8-1

NO.	Name	Min	FG	3P	FT	Rebounds	Fouls	TP	AS	TO	ST	Blocks	+/-
			M-A	M-A	M-A	OR DR TOT	PF FD					BS BA	
1	Nalyssa Smith	F 38:15	9-13	0-0	7-10	4 13 17	2 8	25	3	2	1	0	2
4	Queen Egbo	C 16:57	1-7	0-0	0-0	0 6 6	3 1	2	0	3	0	1	0
3	Jordan Lewis	G 38:15	2-10	0-3	5-8	1 1 2	2 7	9	7	0	1	1	0
21	Ja'Mee Asberry	G 37:01	3-8	2-5	1-2	0 1 1	3 2	9	1	3	2	0	9
24	Sarah Andrews	G 30:11	4-9	1-5	1-4	0 3 3	3 10	1	1	0	0	0	-1
51	Caillin Bickle	24:48	4-7	0-2	0-0	2 2 2	4 11	3	0	1	0	0	2
22	Kamaria McDaniel	13:54	1-2	1-1	1-4	1 0 1	0 2	4	2	1	0	0	-4
10	Jaden Owens	00:39	0-0	0-0	0-0	0 0 0	0 0	0	0	0	0	0	0
Team						0 3 3		0	0				
Totals			24-56	4-16	16-32	6 29 35	15 27	70	17	10	5	2	0 2

Technical Fouls: NONE

Shooting By Period	1st	2nd	3rd	4th	OT
1st FG%	5-16 31.3%				
3PT%	0-3 0.0%				
FT%	3-6 50.0%				
2nd FG%	10-15 66.7%				
3PT%	3-4 75.0%				
FT%	0-1 0%				
3rd FG%	6-12 50.0%				
3PT%	0-3 0.0%				
FT%	8-12 66.7%				
4th FG%	3-13 23.1%				
3PT%	1-6 16.7%				
FT%	7-13 53.8%				
GM FG%	24-56 42.9%				
3PT%	4-16 25.0%				
FT%	18-32 56.3%				

Dead Ball Rebounds: 10, 1

MSU	BAY
Biggest lead	3 (4 th 7:11) 11 (3 rd 9:19)
Best Scoring Run	8 (4 th 0:34) 12 (4 th 3:00)
Lead Changes	2
Times Tied	5
Time with Lead	00:59 34:08

Points from	MSU	BAY
Turnovers	11	10
Paint	30	28
Second Chance	9	10
Fast Breaks	3	13
Bench	14	15

Period by Period Scoring	1st	2nd	3rd	4th	TOT
MSU	12	15	25	16	68
BAY	13	23	20	14	70



Official Basketball Box Score - Final
Alcorn at Baylor
12/09/21 Ferrell Center, Waco
2021-22 Women's Basketball

Game Time: 11:00 AM
Game Duration: 1:46
Attendance: 5,838

Officials: Lisa Jones, Nykesha Thompson, Tiffany Bridges

Alcorn - 40

Record: 0-7

NO.	Name	Min	FG	3P	FT	Rebounds	Fouls	TP	AS	TO	ST	Blocks	+/-
			M-A	M-A	M-A	OR DR TOT	PF FD					BS BA	
42	Bria Broughton	C 17:15	0-2	0-0	0-0	0 0 0	0 0	0	0	0	0	0	-24
2	Zi Nyia White	G 18:41	3-7	0-0	2-2	0 4 4	3 1	8	1	2	0	0	-18
10	LeRae Rascoe	G 19:01	1-5	1-4	0-0	0 1 1	0 0	3	1	1	0	0	-40
14	Cayla Obilo	G 24:26	2-9	1-3	0-0	0 1 1	1 3	5	3	1	0	2	-45
15	Diamond Hall	G 14:35	2-6	2-4	0-0	0 2 2	5 0	6	0	3	0	0	-16
3	Nia McCalphla	19:45	0-4	0-3	0-0	0 2 2	2 0	0	2	1	0	0	-18
21	Akyriale Ford	22:45	3-3	0-0	0-0	2 3 5	1 0	6	0	0	0	0	-30
23	Tyginia Wright	20:44	2-3	0-1	0-0	1 3 4	2 0	4	3	2	0	0	-27
4	Kailyn Watkins	16:47	1-6	1-1	0-0	0 1 1	1 0	3	1	2	0	0	-17
30	Maya Claytor	14:54	1-4	1-2	0-0	0 1 1	1 1	3	0	0	0	0	-20
0	TNaye Griffin	11:07	1-5	0-2	0-0	2 2 4	1 1	2	0	1	0	0	-15
Team						1 0 1		0	0	3			
Totals			16-54	6-20	2-2	6 20 26	17 6	40	11	18	1	0	5 -54

Technical Fouls: Team 1st 10:00

Dead Ball Rebounds: 0, 1

Baylor - 94

Record: 9-1

NO.	Name	Min	FG	3P	FT	Rebounds	Fouls	TP	AS	TO	ST	Blocks	+/-
			M-A	M-A	M-A	OR DR TOT	PF FD					BS BA	
1	Nalyssa Smith	F 20:01	10-13	1-2	4-6	2 8 10	0 4	25	3	0	1	1	0 44
4	Queen Egbo	C 14:00	4-6	0-0	1-1	5 2 7	1 3	9	3	1	2	3	0 28
3	Jordan Lewis	G 19:01	3-6	2-5	0-0	0 2 2	1 2	8	3	1	0	0	0 40
21	Ja'Mee Asberry	G 34:05	7-11	6-8	0-0	0 2 2	1 0	20	2	0	2	1	0 46
24	Sarah Andrews	G 27:18	6-11	2-3	0-0	0 5 5	0 1	14	5	2	3	0	0 35
51	Caillin Bickle	30:13	2-6	0-2	9-10	1 5 6	1 4	13	6	2	2	0	0 36
22	Kamaria McDaniel	23:45	0-3	0-1	0-0	1 1 2	1 0	3	1	0	0	0	23
25	Kendra Gillispie	21:37	1-4	0-1	3-4	1 4 5	0 2	5	1	0	1	0	0 16
11	Andrea Katramados	10:00	0-3	0-2	0-0	0 0 0	0 0	0	0	0	0	0	2
Team						1 2 3		0	0	0			
Totals			33-63	11-24	17-21	11 31 42	16 17	94	26	7	11	5	0 54

Technical Fouls: NONE

Shooting By Period	1st	2nd	3rd	4th	TOT
1st FG%	9-15 60.0%				
3PT%	2-5 40.0%				
FT%	5-6 83.3%				
2nd FG%	11-17 64.7%				
3PT%	3-5 60.0%				
FT%	1-2 50%				
3rd FG%	11-20 55.0%				
3PT%	6-11 54.5%				
FT%	2-3 66.7%				
4th FG%	2-11 18.2%				
3PT%	0-3 0.0%				
FT%	9-10 90%				
GM FG%	33-63 52.4%				
3PT%	11-24 45.8%				
FT%	17-21 81.0%				

Dead Ball Rebounds: 2, 1

ASU	BAY
Biggest lead	0 (1 st 10:00) 55 (4 th 4:25)
Best Scoring Run	5 (3 rd 3:35) 19 (3 rd 7:18)
Lead Changes	0
Times Tied	1
Time with Lead	00:00 39:48

Points from	ASU	BAY
Turnovers	7	25
Paint	12	34
Second Chance	6	16
Fast Breaks	0	28
Bench	18	18

Period by Period Scoring	1st	2nd	3rd	4th	TOT
ASU	12	6	11	11	40
BAY	25	26	30	13	94

Game Notes: Alcorn State assessed an administrative technical foul to start of the game •



Official Basketball Box Score - Final
Baylor at Michigan
12/19/21 Moberg Sun Arena, Uncasville
2021-22 Women's Basketball

Game Time: 1:00 PM
Game Duration: 2:18
Attendance: 6,204

Officials: Maj Forsberg, Tiana Cruise, Mark Resch

Baylor - 68

Record: 9-2

NO.	Name	Min	FG	3P	FT	Rebounds	Fouls	TP	AS	TO	ST	Blocks	+/-
			M-A	M-A	M-A	OR DR TOT	PF FD					BS BA	
1	Nalyssa Smith	F 42:00	8-15	1-2	4-6	2 12 14	2 4	21	0	4	1	3	0 -6
4	Queen Egbo	C 20:33	2-4	0-0	0-0	1 3 4	2 1	4	0	2	0	2	-20
3	Jordan Lewis	G 45:00	2-13	0-5	11-11	3 2 5	3 3	15	7	3	4	0	-6
21	Ja'Mee Asberry	G 41:12	3-7	0-4	1-2	0 1 1	4 1	7	0	3	1	0	0
24	Sarah Andrews	G 42:00	7-17	2-4	0-1	0 1 1	1 3	16	0	2	3	0	-6
51	Caillin Bickle	27:27	2-7	1-3	0-0	0 3 3	5 2	5	2	1	0	0	-14
10	Jaden Owens	06:48	0-0	0-0	0-0	0 0 0	1 1	0	0	0	0	0	-8
Team						3 4 7		0	0				
Totals			24-63	4-16	16-20	9 26 35	18 19	68	9	15	9	5	3 -6

Technical Fouls: NONE

Shooting By Period		
FG%	8-14	57.1%
3PT%	1-4	25.0%
FT%	2-2	100%
FG%	5-16	31.3%
3PT%	0-3	0.0%
FT%	0-0	0%
FG%	4-12	33.3%
3PT%	0-3	0.0%
FT%	6-8	75%
FG%	6-13	46.2%
3PT%	2-4	50.0%
FT%	2-2	100%
FG%	1-8	12.5%
3PT%	1-4	25.0%
FT%	6-8	75%
FG%	24-63	38.1%
3PT%	4-18	22.2%
FT%	16-20	80.0%

2021-22 BOX SCORES



Official Basketball Box Score - Final
Baylor at Kansas St.
01/10/22 Bramlage Coliseum, Manhattan
2021-22 Women's Basketball

Game Time: 1:00 PM
Game Duration: 2:02
Attendance: 2,393



Official Basketball Box Score - Final
Baylor at Oklahoma
01/10/22 Lloyd Noble Center, Norman
2021-22 Women's Basketball

Game Time: 6:00 PM
Game Duration: 1:58
Attendance: 2,002

Officials: Jesse Dickerson, Julie Krommenhoek, Scott Yarbrough

Baylor - 59

Record: 10-3 (0-1)

Team - 55													
HCU (10-3)													
NO. Name	Min	FG M-A	3P M-A	FT M-A	Rebounds OR DR TOT	Fouls PF FD	TP	AS	TO	ST	Blocks BS BA	+/-	
1 NaLyssa Smith	F 40:00	4-12	0-0	4-6	4 3 7	4 4	12	3	1	2	2	3	-9
4 Queen Egbo	C 17:29	2-4	0-0	0-0	2 2 4	5 2	4	0	3	0	0	0	12
3 Jordan Lewis	G 36:21	4-10	1-6	5-8	1 4 5	4 5	14	4	4	5	0	0	-8
21 Ja'Mee Asberry	G 36:28	5-10	4-7	0-0	1 2 3	2 2	14	0	1	0	0	0	1
24 Sarah Andrews	G 24:30	2-8	1-3	0-0	0 0 0	1 1	5	2	3	0	0	0	-10
51 Caitlin Bickle	24:03	3-7	0-3	1-1	1 1 2	4 4	7	1	5	3	1	1	-15
22 Kamaria McDaniel	21:09	1-3	0-1	1-2	0 2 2	2 1	3	1	4	0	0	0	-16
Team					1 3 4		0	1					
Totals		21-54	6-20	11-17	10 17 27	22 19	59	11	22	10	3	4	-9

Technical Fouls: Bickle 3rd 6th 20

Kansas St. - 68

Record: 11-2 (1-0)

NO. Name	Min	FG M-A	3P M-A	FT M-A	Rebounds OR DR TOT	Fouls PF FD	TP	AS	TO	ST	Blocks BS BA	+/-	
50 Ayoka Lee	C 26:49	11-16	0-0	10-13	2 8 10	2 10	32	2	4	3	2	0	10
3 Jaelyn Glenn	G 32:56	2-4	1-3	2-4	0 3 3	2 2	7	1	2	1	0	0	5
4 Serena Sundell	G 34:11	3-8	1-4	3-4	1 0 1	4 5	10	6	6	0	0	0	18
5 Brylee Glenn	G 30:24	1-3	0-1	2-2	0 4 4	3 2	4	3	3	1	0	0	11
24 Emilee Ebert	G 23:13	1-2	1-1	0-0	1 2 3	4 0	3	2	4	0	0	0	5
23 Jada Moore	07:58	1-2	0-0	0-0	0 1 1	1 0	2	0	1	0	0	1	-2
41 Taylor Lauterbach	13:08	1-3	0-1	1-1	0 2 2	1 2	3	0	0	0	1	0	-1
13 Laura Macke	16:50	1-3	0-2	0-0	0 1 1	2 0	2	1	0	1	1	0	4
14 Rebekah Dallinger	09:19	1-1	0-0	0-0	0 0 0	0 0	3	1	0	1	0	0	1
2 Cymone Goodrich	05:12	1-3	0-0	0-0	1 1 2	0 0	2	0	2	0	0	1	-6
Team					1 2 3		0	1					
Totals		23-45	4-13	18-24	6 24 30	19 21	68	16	23	7	4	3	9

Technical Fouls: NONE

	Baylor	KState
Biggest lead	2 (1 st 9:28)	15 (2 nd 5:29)
Best Scoring Run	7 (3 rd 3:50)	10 (1 st 3:16)
Lead Changes	1	
Times Tied	0	
Time with Lead	00:35	38:53

Points from	Baylor	KState
Turnovers	16	18
Paint	24	32
Second Chance	11	7
Fast Breaks	6	0
Bench	10	12

Period by Period Scoring	1st	2nd	3rd	4th	TOT
Baylor	7	14	17	21	59
KState	18	11	20	19	68

Shooting By Period	1st	2nd	3rd	4th	FT
FG%	31.3	23.1%			
3PT%	0-7	0.0%			
FT%	1-1	100%			
2nd FG%	6-17	35.3%			
3PT%	1-4	25.0%			
FT%	1-2	50%			
3rd FG%	5-11	45.5%			
3PT%	2-4	50.0%			
FT%	5-9	55.6%			
4th FG%	7-13	53.8%			
3PT%	3-5	60.0%			
FT%	4-5	80%			
GM FG%	21-54	38.9%			
3PT%	6-20	30.0%			
FT%	11-17	64.7%			

Dead Ball Rebounds: 4, 1

Shooting By Period	1st	2nd	3rd	4th	FT
FG%	6-12	50.0%			
3PT%	3-4	75.0%			
FT%	3-4	75%			
2nd FG%	5-10	50.0%			
3PT%	0-2	0.0%			
FT%	1-1	100%			
3rd FG%	7-13	53.8%			
3PT%	0-3	0.0%			
FT%	6-9	66.7%			
4th FG%	5-10	50.0%			
3PT%	1-4	25.0%			
FT%	8-10	80%			
GM FG%	23-45	51.1%			
3PT%	4-13	30.8%			
FT%	18-24	75.0%			

Dead Ball Rebounds: 4, 1

Baylor - 77

Record: 10-4 (0-2)

NO.	Name	Min	FG M-A	3P M-A	FT M-A	Rebounds OR DR TOT	Fouls PF FD	TP	AS	TO	ST	Blocks BS BA	+/-	
1	NaLyssa Smith	F 37:49	12-20	0-1	6-8	3 5 8	3 5	30	2	3	3	0	1	-5
4	Queen Egbo	C 22:46	6-12	0-0	4-5	4 6 10	2 5	16	0	2	1	2	0	5
3	Jordan Lewis	G 37:29	2-6	2-5	1-2	1 10 11	4 6	7	5	5	0	0	1	-2
21	Ja'Mee Asberry	G 37:46	2-4	2-2	2-2	0 0 0	1 1	8	0	1	0	0	0	-3
24	Sarah Andrews	G 34:37	0-4	0-2	5-6	0 2 2	4 2	5	2	4	2	0	0	-5
51	Caitlin Bickle	19:25	5-10	0-1	1-2	1 2 3	2 2	11	2	1	1	0	1	-12
10	Jaden Owens	07:54	0-0	0-0	0-0	0 1 1	0 0	0	1	2	0	0	0	-5
22	Kamaria McDaniel	02:14	0-0	0-0	0-0	0 0 0	0 0	0	0	0	0	0	0	-3
Team						3 1 4		0	0	0				
Totals			27-56	4-11	19-25	12 27 39	16 21	77	12	18	7	2	3	-6

Technical Fouls: NONE

Shooting By Period	1st	2nd	3rd	4th	FT
FG%	9-14	64.3%			
3PT%	0-1	0.0%			
FT%	3-4	75%			
2nd FG%	8-12	66.7%			
3PT%	1-2	50.0%			
FT%	3-4	75%			
3rd FG%	7-17	41.2%			
3PT%	3-3	100.0%			
FT%	7-8	87.5%			
4th FG%	3-13	23.1%			
3PT%	0-5	0.0%			
FT%	6-9	66.7%			
GM FG%	27-56	48.2%			
3PT%	4-11	36.4%			
FT%	19-25	76.0%			

Dead Ball Rebounds: 4, 0

Oklahoma - 83

Record: 14-2 (3-1)

NO. Name	Min	FG	3P	FT	Rebounds	Fouls	TP	AS	TO	ST	Blocks	+/-
					OR DR TOT	PF D						
34 Liz Scott	F 11:49	1-6	0-0	0-0	2 1 3	4 0	2	0	0	0	0	1
4 Kennady Tucker	G 32:34	3-6	2-3	1-2	3 1 4	4 2	9	3	1	0	0	4
10 Kelbie Washington	G 15:47	2-6	0-2	1 0 1	4 2	6	3	3	2	0	0	8
25 Madi Williams	G 36:15	7-21	1-6	3-5	0 3 3	3 3	18	7	5	0	0	1
30 Taylor Robertson	G 40:00	5-5	5-5	0-0	0 5 5	0 1	15	2	1	1	0	0
1 Nevaeh Tot	31:39	2-4	1-2	6-6	1 3 4	2 6	11	4	3	2	0	0
24 Skylar Vann	29:54	8-13	3-7	3-3	2 5 7	4 2	22	3	2	4	3	0
14 Bre'Yon White	02:02	0-0	0-0	0-0	0 0 0	0 0	0	0	0	0	0	0
Team					0 1 1		0	0				
Totals		28-61	14-27	13-18	9 19 28	21 16	83	22	14	10	3	2

Technical Fouls: NONE

Shooting By Period	1st	2nd	3rd	4th	FT
FG%	6-16	37.5%			
3PT%	4-8	50.0%			
FT%	0-0	0%			
2nd FG%	6-17	35.3%			
3PT%	2-7	28.6%			
FT%	6-7	85.7%			
3rd FG%	9-14	64.3%			
3PT%	5-8	62.5%			
FT%	1-2	50%			
4th FG%	7-14	50.0%			
3PT%	3-4	75.0%			
FT%	6-9	66.7%			
GM FG%	28-61	45.9%			
3PT%	14-27	51.9%			
FT%	13-18	72.2%			

Dead Ball Rebounds: 2, 0

	BU	OU
Biggest lead	10 (1 st 7:07)	6 (4 th 0:20)
Best Scoring Run	10 (1 st 7:07)	9 (4 th 2:15)
Lead Changes	1	
Times Tied	4	
Time with Lead	34:40	02:56
Points from	BU	OU
Turnovers	9	25
Paint	40	26
Second Chance	17	4
Fast Breaks	6	15
Bench	11	33



Game Time: 2:02 PM
Game Duration: 1:53
Attendance: 1,688

Official Basketball Box Score - Final
Baylor at Kansas
01/10/22 Allen Fieldhouse, Lawrence
2021-22 Women's Basketball

Officials: Bryan Entinire, Doug Knight, Ry Seales

Baylor - 82

Record: 11-4 (1-2)

NO. Name	Min	FG M-A	3P M-A	FT M-A	Rebounds OR DR TOT	Fouls PF FD	TP	AS	TO	ST	Blocks BS BA	+/-	
1 NaLyssa Smith	F 31:58	6-22	0-1	3-6	6 4 10	3 6	15	2	3	0	0	2	-5
4 Queen Egbo	C 23:18	4-9	0-0	2-3	1 9 10	1 2	10	0	3	0	2	2	4
3 Jordan Lewis	G 31:34	0-7	0-4	1-2	0 1 1	3 3	1	8	2	2	0	0	5
21 Ja'Mee Asberry	G 37:50	6-12	6-11	2-2	1 4 5	2 1	20	2	0	0	0	0	-4
24 Sarah Andrews	G 37:15	8-14	7-10	2-2	4 0 4	1 3	25	6	1	2	0	0	5
51 Caitlin Bickle	24:44	4-6	0-1	0-0	3 1 4	5 4	8	2	1	0	2	0	7
10 Jaden Owens	13:21	1-2	1-2	0-0	1 0 1	0 0	3	4	0	2	0	0	3
Team					1 1 2		0	0					
Totals		29-72	14-29	10-15	17 20 37	15 19	82	24	10	6	4	4	3

Technical Fouls: NONE

Shooting By Period	1st	2nd	3rd	4th	FT
FG%	6-15	40.0%			
3PT%	1-4	25.0%			
FT%	1-2	50%			
2nd FG%	10-23	43.5%			
3PT%	6-10	60.0%			
FT%	1-1	100%			
3rd FG%	8-16	50.0%			
3PT%	5-7	71.4%			
FT%	1-2	50%			
4th FG%	5-18	27.8%			
3PT%	2-8	25.0%			
FT%	7-10	70%			
GM FG%	29-72	40.3%			
3PT%	14-29	48.3%			
FT%	10-15	66.7%			

Dead Ball Rebounds: 2, 0

Kansas - 79

Record: 11-3 (2-2)

NO. Name	Min	FG M-A	3P M-A	FT M-A	Rebounds OR DR TOT	Fouls PF FD	TP	AS	TO	ST	Blocks BS BA	+/-	
10 Ioanna Chatzileonti	F 36:12	8-13	1-2	3-4	2 6 8	1 4	20	0	2	1	0	0	5
1 Tayanna Jackson	C 17:35	1-2	0-0	0	1 6 7	5 1	2	1	2	1	2	0	15
5 Anya Thomas	E 21:37	1-5	0-3	0-4	0 4 4	3 4	5	1	2	1	0	0	8
13 Holly Kersigier	C 30:37	7-13	5-6	4-4	0 5 5	1 3	23	2	3	0	0	3	2
15 Zakiah Franklin	F 36:02	8-12	1-1	3-4	0 1 1	0 2	20	6	1	0	0	0	-6
33 Nadira Eltayeb	05:57	0-1	0-0	0	1 1 2	4 0	0	0	1	0	1	1	-6
12 Katrine Jessen	16:58	0-0	0-0	0	1 2 3	2 0	0	0	1	1	0	1	-10
25 Chandler Prater	09:16	0-1	0-0	0-0	0 0 0	1 0	0	0	3	1	0	0	-13
45 Chisom Ajekwu	03:18	0-1	0-0	0-0	1 0 1	1 0	0	0	0	0	0	0	-5
20 Julie Brosseau	22:28	3-8	3-7	0-0	0 1 1	1 1	9	3	1	0	0	0	0
Team					4 3 7	9	0	0	0	0	0	0	0
Totals		28-56	10-19	13-16	10 29 39	19 15	79	13	6	4	4	4	-3

2021-22
11-4

BIG 12

1-2

AP

15th

COACHES

16th

NET

23rd

#15/16 BAYLOR vs. OKLAHOMA STATE | GAME 16
Jan. 19, 2022 (Waco, Texas/Ferrell Center)

1

**NaLyssa Smith** (NUH-lis-suh)

F • 6-4 • Sr. • Converse, Texas

PTS	REB	AST	FG%	3FG%	FT%	MIN
SEA 20.7	12.1	1.4	.538	.250	.733	32.0
CAR 14.2	7.8	0.8	.558	.186	.749	24.0

CAREER HIGHS

PTS	REB	AST	STL	BLK
30	19	4	3	4

- Coming off one of the most decorated single-season performances in BU WBB history last year
- Reigning Wade Trophy winner named AP Preseason All-American, 4x Preseason Watch List member
- No. 14 in career points in Baylor WBB history
- Nearly had a 20-20 performance against Houston with 21 points and 19 rebounds
- Nation's leader with 11-straight double-doubles
- Big 12 Preseason POY Playing in space more this season in Nicki Collen's new offensive system
- Netted 30 points twice this season (at Maryland, at Oklahoma)

3

**Jordan Lewis**

G • 5-7 • GS • Windermere, Fla.

PTS	REB	AST	FG%	3FG%	FT%	MIN
SEA 11.3	3.3	5.1	.405	.279	.662	32.1
CAR 12.1	4.0	4.0	.368	.325	.721	33.3

CAREER HIGHS

PTS	REB	AST	STL	BLK
32	11	9	6	1

- Sixth-year senior transfer from Alabama where she left top-10 in career points, assists
- Lieberman Award Watch List and Wooden Award Top 50 Watch List member
- Recorded 29 points against No. 3 Maryland. Hit a key 3-pointer with a minute to play.
- Plays the 1 and the 2 alongside Sarah Andrews; Strong driver off ball screens
- No. 14 amongst NCAA DI active players in career points, third in career assists
- Graduated with her bachelor's and master's from Alabama
- Has started every game she's played

4

**Queen Egbo** (EGG-bow)

F • 6-3 • Sr. • Houston, Texas

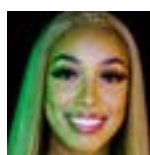
PTS	REB	BLK	FG%	3FG%	FT%	MIN
SEA 9.6	7.9	0.9	.488	.000	.722	22.5
CAR 9.0	6.6	0.6	.520	.000	.569	18.1

CAREER HIGHS

PTS	REB	AST	STL	BLK
26	18	4	4	7

- No. 8 all-time in BU history in career blocks
- 3x Preseason Watch List member; Preseason All-Big 12 Team honoree
- Stretched her range but is still efficient at the block
- Put up double-figure points in 3-straight games against ASU, Houston and Morehead St.
- Brought down a career-high 16 boards vs. Morehead State

10

**Jaden Owens**

G • 5-8 • Jr. • Plano, Texas

PTS	REB	AST	FG%	3FG%	FT%	MIN
SEA 1.6	1.6	1.2	.261	.176	.667	14.7
CAR 2.0	1.2	1.8	.339	.270	.538	11.3

CAREER HIGHS

PTS	REB	AST	STL	BLK
15	5	8	3	1

- Claimed the role of defensive stopper this season
- Set a career high with five rebounds in BU's season-opener vs. Texas State
- Transferred from UCLA and made her BU debut on Nov. 17, 2020 vs. Northwestern State
- Scored a career-high 15 points, including 4 triples, vs. Iowa State (1/16/20)

11

**Andrea Katramados** (ANNE-dree-uh cat-truh-MAD-us)

G • 5-10 • Fr. • Belle Mead, N.J.

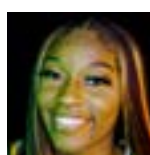
PTS	REB	AST	FG%	3FG%	FT%	MIN
SEA 0.0	0.0	0	.000	.000	.000	3.7
CAR 0.0	0.0	0	.000	.000	.000	3.7

CAREER HIGHS

PTS	REB	AST	STL	BLK
--	--	--	--	1

- Freshman walk-on from New Jersey
- Made her Baylor debut at UT Arlington
- Notched her first career block against Houston
- Played a career-best 10 minutes vs. Alcorn State

21

**Ja'Mee Asberry** (JAY-mee)

G • 5-5 • Jr. • Tulsa, Okla.

PTS	REB	AST	FG%	3FG%	FT%	MIN
SEA 9.9	2.4	1.7	.392	.381	.833	33.7
CAR 9.9	2.4	2.8	.348	.343	.705	27.8

CAREER HIGHS

PTS	REB	AST	STL	BLK
28	7	9	5	1

- Sharpshooter transfer from Oklahoma State
- Named All-Big 12 Second Team after averaging 17.0 ppg and shooting .419 from 3 at OSU in 2020-21
- Made her Baylor debut against Texas State and drained five 3s a game later at UT Arlington
- Tied her career high with six 3-pointers against Alcorn State
- Fire and ice at Kansas as she hit six 3s, the last to pull BU within a point of KU with less than 20 seconds to go before she drained a pair of FTs with 12 seconds left to give BU the lead for good

22

**Kamaria McDaniel** (kuh-MARR-ee-uh)

G • 5-10 • Sr. • Inkster, Mich.

PTS	REB	AST	FG%	3FG%	FT%	MIN
SEA 2.1	1.9	1.3	.300	.444	.417	14.6
CAR 10.4	2.8	1.7	.384	.324	.731	23.7

CAREER HIGHS

PTS	REB	AST	STL	BLK
40	11	9	3	2

- "KMac" transferred from Penn State but sat out last season due to a knee injury
- Made her Baylor debut at UT Arlington and sank her first bucket (a 3) a game later vs. UNO
- Named First Team All-Big Ten in 2019-20 after averaging 19.8 ppg

24

**Sarah Andrews**

G • 5-6 • So. • Irving, Texas

PTS	REB	AST	FG%	3FG%	FT%	MIN
SEA 11.5	3.3	3.7	.383	.443	.621	31.8
CAR 6.6	1.9	2.0	.380	.416	.618	18.0

CAREER HIGHS

PTS	REB	AST	STL	BLK
25	8	9	3	1

- Starting point guard for the Bears after averaging 4.2 min/gm last season with a veteran back court
- Logged a career-best 37 minutes at No. 3 Maryland where she dished out eight dimes to go with 10 points
- Topped that mark with nine assists a week later against Houston
- Started 6-for-6 from deep to finish with 20 points vs. Morehead State
- Topped those numbers with 7 3s for 25 points at Kansas
- Solid distributor growing in her role as point guard under HC Nicki Collen

25

**Kendra Gillispie** (guh-LESS-pee)

F • 6-2 • Fr. • Oklahoma City, Okla.

PTS	REB	AST	FG%	3FG%	FT%	MIN
SEA 2.3	1.7	0.3	.333	.000	.889	7.5
CAR 2.3	1.7	0.3	.333	.000	.889	7.5

CAREER HIGHS

PTS	REB	AST	STL	BLK
6	5	1	1	1

- One of two freshmen on the roster for 2021-22
- Signed with Baylor in July ranked No. 58 overall and No. 10 at her position by ESPN HoopGurlz
- Won a state title in the shot put at Norman High School
- Made her Baylor debut at UT Arlington and scored her first points a game later
- Logged career highs across the board against Alcorn State

51

**Caitlin Bickle** (BICK-uhl)

F • 6-0 • Sr. • Cave Creek, Ariz.

PTS	REB	AST	FG%	3FG%	FT%	MIN
SEA 8.2	4.6	1.7	.484	.222	.829	23.2
CAR 3.9	2.9	0.8	.493	.308	.760	11.9

CAREER HIGHS

PTS	REB	AST	STL	BLK
13	11	6	4	3

- Senior leader who's already announced she's coming back for a fifth year next season
- Quarterback on the floor for the Bears with her vocal leadership
- Had an all-around game at UTA with 7 pts, 8 rbs, 3 asts, 2 blks and a handful of charges taken
- Set multiple career highs with 13 points, 6 assists and a 9-10 showing at the FT line vs. Alcorn St.
- Graduated with a bachelor's degree in May. In grad school studying Sports Management