

2013-14

MTM



**MILLIKIN
BIG BLUETM
BASKETBALL**

Contents

- 3 Big Blue Coaching Staff
- 4 Millikin Career Coaching Records
- 5 2013-14 Season Preview
- 6 2013-14 Roster
- 7-10 Returning Letter winners
- 11 Newcomers
- 12 2012-13 Statistics and Results
- 13-15 Big Blue Record Book
- 16-17 Big Blue History
- 18-19 Millikin in the CCIW
- 20 Schedule



Quick Facts

Location	Decatur, Illinois
Founded/Opened	1901/1903
President	Dr. Patrick E. White
Enrollment	Approx. 2,300
Nickname	Big Blue
Colors	Royal Blue and White
National Affiliation	NCAA Division III
Conference	Illinois and Wisconsin
Home Court	Griswold Center (3,052)
Athletic Director	Dr. Craig White
Head Coach	Matt Nadelhoffer
Basketball Office Phone	217-424-3725
Letterwinners Returning/Lost	14/7
Starters Returning/Lost	5/0
Sports Information Director	Bryan Marshall
Sports Information Phone	217-362-6429
Athletic Department Fax	217-420-6629



Matt Nadelhoffer



Matt Nadelhoffer was named Big Blue Head Basketball Coach in April 2011. Since his arrival, Nadelhoffer set his focus on changing the program's culture and overall talent. In 2012-13, with 15 new freshmen (including five freshmen starters) Nadelhoffer led Millikin out of the basement to an 8-17 (4-10) record. For the first time in three years they won a CCIW game. For the first time in three years they won multiple games in a row. They finished sixth in the conference for first time since 2009. Nadelhoffer started up a student section which helped the Big Blue to a 5-5 (.500) home record and doubled attendance at home basketball games.

Nadelhoffer came to Millikin from Eastern University where he had served as Head Coach since 2002. Under Nadelhoffer's direction the Eagles had the school's highest Freedom Conference finish in school history finishing in second in 2009-10. Prior to going to Eastern University, Nadelhoffer was an assistant at the College of Dupage and was on their staff when they won the NJCCA National Championship in 2002.

Nadelhoffer is a 1998 graduate of Wheaton College where he earned All-America and All-CCIW honors as a player. He set an NCAA record for assists in a tournament game with 20 and holds the Wheaton record for assists in a season at 221. Nadelhoffer was inducted into the Wheaton Athletic Hall of Fame in 2012. After college, he played in the CBA and had a tryout stint with the Miami Heat. Nadelhoffer has played in Croatia, Portugal, England, Spain, Ireland, and Switzerland.

What They're Saying About Coach Nadelhoffer:

"Matt is one of the great up and coming coaches and continues to stress the fundamentals to his players. His energy and enthusiasm are contagious, and it reflects in the way he cares for his players and program. Millikin Basketball and the community will be impacted immediately."

Jay Wright—Head Coach, Villanova University

"Matt will bring tremendous enthusiasm to the Decatur community. Millikin University has hired the right man to turn the program around and to contend for conference championships for years to come. His positive attitude and focus on being a relationship driven coach will become contagious."

Pat Chambers--Penn State Basketball

Assistant Coaches



T.J. Caughell

T. J. Caughell joined the Millikin coaching staff in June 2011 to serve as the assistant basketball coach.

Caughell came to Millikin after spending two years as the Head Assistant Men's Basketball Coach at Southern Oregon University. Caughell has also coached several sports on the

high school level.

As a player, Caughell was All-State in high school in football, basketball and baseball at Reedsport High School in Oregon. On the collegiate level, Caughell was starter at Lane Community College for one season before playing three seasons at Southern Oregon University twice earning NAIA Academic All-American honors. Caughell averaged 14.5 points, five assists and five rebounds during his senior season and is third on the Southern Oregon University all-time assist list.

Caughell earned a Bachelor of Science in Health Promotion/Fitness Management and a Masters of Arts in Teaching at Southern Oregon University.

Jonathan Lester



Jonathan Lester joined the Millikin staff in August 2011 to serve as Assistant Basketball Coach and Assistant Track and Field Coach.

Lester spent the 2010-11 season as an assistant coach at Eastern University under Nadelhoffer. While at Eastern he was responsible for various aspects

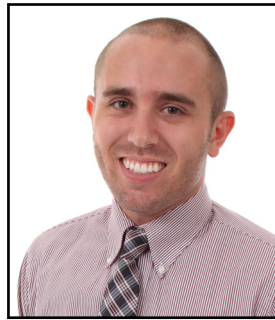
of the day to day operations of the program, fundraising, alumni development, recruiting and scouting.

Lester started his coaching career as a student assistant coach at Grove City College in Pennsylvania. At Grove City, Lester assisted in the recruiting, scouting, and film exchange process, as well as having on court coaching responsibilities. During his four year stint he helped the Wolverines to one Presidents' Athletic Conference (PAC) championship, one PAC regular season championship and three consecutive postseason tournament bids.

In addition to his collegiate experience, Lester coached basketball and track and field at his high school alma mater. During the summers, Lester works at various basketball camps across the country including Duke, Villanova and Clemson Universities.

Lester earned a Bachelor of Arts degree in History and Secondary Education from Grove City College and is in the process of completing his Master's degree.

Assistant Coaches



Blake Reynolds

Blake Reynolds joined the Big Blue assistant coaching staff in 2012. In addition to working with the Big Blue basketball team, Reynolds is the Residential Communities Coordinator in Millikin's Office of Residence Life.

Reynolds spent two years as a Graduate Assistant Men's Basketball Coach at Concordia University in Michigan. Prior to Concordia, Reynolds served four years as an Assistant Boys Basketball Coach at Decatur LSA High School.

Reynolds earned his bachelor's degree in Marketing from Millikin University in 2009 and holds a master's degree from Concordia in Organizational Leadership and Administration.



Bill Hupp

Bill Hupp joined the Millikin coaching staff in January 2012 to serve as a volunteer assistant basketball coach. He assists with Chicagoland area recruiting, advance scouting of future opponents and player development.

John Lograsso

Millikin Hall of Famer John Lograsso serves as a Volunteer Coach for the Big Blue.

Andrew Graf

Andrew is in his second season serving as a Student Coach for the men's basketball program.

Big Blue Career Records

Coach	W	L	Pct.
Joe Ramsey (1976-96)	293	249	.540
Ralph Allan (1948-62)	203	169	.546
Tim Littrell (1996-07)	122	153	.444
Norman Wann (1916-18, 1920-23)	97	47	.671
Don Williams (1963-69)	89	63	.586
Jerald Gray (1970-75)	80	60	.571
Leo Johnson ((1925-26, 1933-37)	54	50	.515
Wayne Gill (1927-32)	53	50	.505
James Ashmore (1906-07, 1910-14)	48	29	.623
Marc Smith (2007-2011)	33	66	.333
Marshall Wells (1941-42, 1946)	27	25	.519
Harold Johnson (1938-40)	17	33	.340
Don Lindeberg (1947)	15	5	.750
Robert Brannan (1919)	12	4	.750
Neal Price (1915)	11	4	.733
Rollie Williams (1923-24)	10	12	.455
Matt Nadelhoffer (2011-Current)	9	41	.180
Jim Goff (1942-43)	6	10	.375
L.L. Hoopes (1908-09)	1	8	.111
No Coach	1	2	.333
J.C. Elder (1907-08)	0	3	.000

Griswold Center

Griswold Physical Education Center has been the home of Millikin University basketball since the 1970-71 season. The Big Blue men christened the new facility with a 108-77 victory over Grinnell on Dec. 1, 1970. The men also won the basketball program's 1,000th game at Griswold Center, a 67-54 victory over North Central on Jan. 11, 1995.

Three regulation-size basketball courts are located in the fieldhouse portion of the building, which is 114 by 192 feet. The original Tartan surface was replaced by a maple floor in 1989. Seating for 3,052 spectators is available in Griswold Center. In the summer of 2004, new bleachers were installed on the building's west side. In addition to traditional bleacher seating, fold-down style chairs are also part of the new bleacher design. And during the summer of 2005, new scoreboards were added thanks to a gift from Dyke ('68) and Sue Hawk ('69) Ridgley. Prior to the 2013-14 season, the west side bleachers were refurbished to provide for additional seating.

Griswold Center also houses a six-lane swimming pool, classrooms, offices, locker rooms and a training room. The building is named to recognize the gift of Mr. and Mrs. John C. Griswold. Mr. Griswold was a member of the class of 1923 and a former University trustee.

Millikin Basketball Coach Matt Nadelhoffer's rebuilding efforts take another step this season with Nadelhoffer's first recruiting class entering its sophomore season.

The "New Era" in Big Blue basketball took major steps last season when Millikin won eight games including four CCIW contests playing with a freshman dominated line-up. Last season's entire starting line-up and 10 of its top 12 players were all freshmen. In 2013-14, those freshmen are now sophomores and have gained a valuable year of experience playing college basketball. The Big Blue still feature a young team with no seniors and only two juniors on the roster, but Nadelhoffer believes the battle tested returners and a solid recruiting class have Millikin poised for success.

Millikin returns 14 letter winners including all five starters led by leading scorer guard TJ Griffin who led Millikin with a 12.3 scoring average in 2012-13. Forward Deavis Johnson returns after earning CCIW All-Conference Third Team honors last season. The sky is the limit for Johnson who last season played in only his second year of organized basketball averaging nine points and a team high 11 rebounds per game. Six foot eight inch center Mitch Wilfer is back after starting all 25 games last year. He is rejoined by wing Elijah Kinmon and guards Trent Windemuller and Chase Robbins.

Other returners that saw important minutes last season include Jaylon Owens, who made 11 starts, Tommy Pilackas, Tives Gardner, Drew Bollier, Brady Knapp, Parker Day and Jacob Kueker.

With an outstanding group of returning players, Nadelhoffer added a few key pieces for the 2013-14 season. Heading up the list of newcomers is 6-8 forward Bryn Agnew who was part of Nadelhoffer's first recruiting class, but sat out last season while adjusting to college life. Incoming freshmen include versatile big man Shaq Edwards, a high school teammate of Griffin, 6-8 Brody Bence and sharp shooting guard Jeremy Pezzelle.

Millikin will face a tough challenge in conference play with three CCIW teams ranked in the top six in NCAA DIII in the preseason poll and a fourth conference team just outside the Top 25. Nadelhoffer believes the Big Blue have what it takes to reach the top four in the conference putting the Millikin program on a national stage.

Millikin opens the season on Nov. 15 playing Greenville College and Westminster in the CCIW/SLIAC Challenge. The Big Blue's home opener is Nov. 20 against Aurora University at 7 p.m.

2013-14 Big Blue Team Captains



Drew Bollier



TJ Griffin



Deavis Johnson

2013-14 Roster

No.	Name	Pos.	Ht.	Wt.	Yr.	Hometown/High School
40	Bryn Agnew	F	6-8	200	Fr.	Towanda, Ill./University
44	Brody Bence	F	6-8	220	Fr.	Shelbyville, Ill./Shelbyville
4	Drew Bollier*	G	6-0	180	Jr.	Atlanta, Ga./Oglethorpe University
JV-24	Gregg Boomer	G	6-0	175	Fr.	Decatur, Ill./Argenta-Oreana
13	Brennan Coltrane*	G	6-1	160	So	Websters Groves, Mo./Webster Groves
5	Parker Day*	G	6-0	190	So.	Winchester, Ill./Winchester
42	Shaq Edwards	F	6-5	260	Fr.	St. Louis, Mo./McCluer
0	Tives Gardner*	G	5-9	185	So.	Springfield, Ill./Southeast
1	TJ Griffin*	G	6-0	165	So.	St. Louis, Mo./McCluer
22	Deavis Johnson*	F/W	6-7	210	So.	East St. Louis, Ill./East St. Louis Sr.
14	Elijah Kinmon*	W	6-5	190	So.	Fairview Heights, Ill./O'Fallon
33	Brady Knapp*	F	6-7	190	Jr.	Bloomington, Ill./University
21	Jacob Kueker*	W	6-5	175	So.	Red Bud, Ill./Red Bud
JV-22	Michael Morawiec	G	6-2	150	Fr.	Norridge, Ill./Ridgewood
35	Jaylon Owens*	F	6-6	235	So.	Belleville, Ill./Belleville West
20	Jeremy Pezzelle	G	5-9	155	Fr.	Decatur, Ill./LSA
34	Tommy Pilackas*	F	6-3	90	So.	Lebanon, Ill./Lebanon
23	Chase Robbins*	G	6-2	185	So.	Normal, Ill./Normal Community
JV-5	DeMarcus Shannon	G	6-4	190	Fr.	Chicago, Ill./University
JV-10	Shakar Washington	G	5-10	175	Fr.	Joliet, Ill./Joliet Catholic
55	Mitch Wilfer*	F/C	6-8	265	So.	Wentzville, Mo./Holt
24	Trent Windemuller*	G	6-2	205	So.	Holland, Mich./Holland

MILLIKIN

BASKETBALL

Players

Returning Letter winners



4-Drew Bollier, Jr., G, 6-0 **One Varsity Letter**
Atlanta, Georgia (Oglethorpe University)
2012-13: Played in 15 games averaging 1.4 points per game.

Communication major

Career Game Highs: 5 points, 1 rebound, 1 assist, 1 steal

Year	G-GS	Min.Avg.	FG-FGA	FG%	3PT-A	3PT%	FT-FTA	FT%	S	A	Pts.	PPG	Reb.	RPG
12-13	15-0	68-4.5	8-13	.615	4-8	.500	1-3	.333	2	2	21	1.4	3	0.2



13-Brennan Coltrane, So., G, 6-1 **One Varsity Letter**
Webster Groves, Missouri (Webster Groves H.S.)
2012-13: Appeared in seven games on the varsity level...played mainly on JV team.

Sports Management major

Year	G-GS	Min.Avg.	FG-FGA	FG%	3PT-A	3PT%	FT-FTA	FT%	S	A	Pts.	PPG	Reb.	RPG
12-13	7-0	12-1.7	0-2	.000	0-0	.000	1-2	.500	0	0	1	0.1	0	0



5-Parker Day, So., G, 6-1 **One Varsity Letter**
Winchester, Illinois (Winchester H.S.)
2012-13: Played in 12 varsity games.

Business major

Year	G-GS	Min.Avg.	FG-FGA	FG%	3PT-A	3PT%	FT-FTA	FT%	S	A	Pts.	PPG	Reb.	RPG
12-13	12-0	24-2.0	0-2	.000	0-0	.000	0-0	.000	1	1	0	0	0	0



0-Tives Gardner, So., G, 5-9 **One Varsity Letter**
Springfield, Illinois (Southeast H.S.)
2012-13: Played in 21 games with one start averaging 2.6 points per game.

Sports Management major

Career Game Highs: 12 points, 3 rebounds, 4 assists, 3 steals

Year	G-GS	Min.Avg.	FG-FGA	FG%	3PT-A	3PT%	FT-FTA	FT%	S	A	Pts.	PPG	Reb.	RPG
12-13	21-1	223-10.6	19-66	.288	6-25	.240	10-15	.667	15	19	54	2.6	16	0.8

Returning Letter winners



1-TJ Griffin, So., G, 6-0 **One Varsity Letter**
St. Louis, Missouri (McCluer H.S.)
2012-13: Played in 24 games with 23 starts...Led the Big Blue in scoring averaging 12.3 points per game.

Sports Management major

Career Game Highs: 23 points, 5 rebounds, 13 assists, 7 steals

Year	G-GS	Min.Avg.	FG-FGA	FG%	3PT-A	3PT%	FT-FTA	FT%	S	A	Pts.	PPG	Reb.	RPG
12-13	24-23	694-28.9	106-272	.390	40-105	.381	44-67	.657	61	68	296	12.3	53	2.2



22-Deavis Johnson, So. F/W, 6-7 **One Varsity Letter**
East St. Louis, Illinois (East St. Louis H.S.)
2012-13: Played in 23 games with 12 starts averaging 10.9 points per game...Led Big Blue in rebounding with 8.9 per game...Named to CCIW All-Conference Third Team.

Sports Management major

Career Game Highs: 25 points, 17 rebounds, 4 assists, 3 steals, 3 blocks

Year	G-GS	Min.Avg.	FG-FGA	FG%	3PT-A	3PT%	FT-FTA	FT%	S	A	Pts.	PPG	Reb.	RPG
12-13	23-12	594-25.8	96-187	.513	1-8	.125	58-113	.509	34	33	251	10.9	204	8.9



14-Elijah Kinmon, So., W, 6-5 **One Varsity Letter**
Fairview Heights, Illinois (O'Fallon H.S.)
2012-13: Played in 24 games with 22 starts averaging 6.5 points and three rebounds per game.

Sports Management major

Career Game Highs: 19 points, 7 rebounds, 5 steals, 4 blocks, 3 assists

Year	G-GS	Min.Avg.	FG-FGA	FG%	3PT-A	3PT%	FT-FTA	FT%	S	A	Pts.	PPG	Reb.	RPG
12-13	24-22	561-23.4	50-144	.347	26-83	.313	31-42	.738	22	19	157	6.5	71	3.0



33-Brady Knapp, Jr., F, 6-7 **Two Varsity Letters**
Bloomington, Illinois (University H.S.)
2012-13: Played in 12 games averaging 1.3 points per game.
2011-12: Played in all 25 games with 19 starts...Averaged three points and two rebounds per game.

Physical Education major

Career Game Highs: 8 points, 6 rebounds, 2 steals, 2 assists

Year	G-GS	Min.Avg.	FG-FGA	FG%	3PT-A	3PT%	FT-FTA	FT%	S	A	Pts.	PPG	Reb.	RPG
11-12	25-19	464-18.6	34-85	.400	2-6	.333	3-9	.333	7	8	73	2.9	48	1.9
12-13	12-0	47-3.9	6-12	.500	1-4	.250	2-2	1.000	0	2	15	1.3	8	0.7
Career	37-19	511-13.8	40-97	.412	3-10	.300	5-11	.455	7	10	88	2.4	56	1.5

Returning Letter winners



21-Jacob Kueker, So. W, 6-5 **One Varsity Letter**
Red Bud, Illinois (Red Bud H.S.)
2012-13: Played in 12 varsity games.

Physical Education major

Career Game Highs: 5 points, 6 rebounds

Year	G-GS	Min.Avg.	FG-FGA	FG%	3PT-A	3PT%	FT-FTA	FT%	S	A	Pts.	PPG	Reb.	RPG
12-13	12-0	47-3.9	2-6	.333	0-2	.000	4-6	.667	0	1	8	0.7	14	1.2



35-Jaylon Owens, So., F, 6-6 **One Varsity Letter**
Belleveille, Illinois (Belleveille West H.S.)
2012-13: Played in 24 games with 11 starts averaging four points and four rebounds per game.

Physical Education major

Career Game Highs: 11 points, 13 rebounds, 4 assists, 1 steal, 1 block

Year	G-GS	Min.Avg.	FG-FGA	FG%	3PT-A	3PT%	FT-FTA	FT%	S	A	Pts.	PPG	Reb.	RPG
12-13	24-11	440-18.3	32-89	.360	1-11	.091	30-62	.484	8	22	95	4.0	103	4.3



34-Tommy Pilackas, So., F, 6-3 **One Varsity Letter**
Lebanon, Illinois (Lebanon H.S.)
2012-13: Played in 20 games averaging 3.7 points per game.

Athletic Training major
2012-13 CCIW Academic All-Conference

Career Game Highs: 16 points, 6 rebounds, 4 assists, 3 steals, 1 block

Year	G-GS	Min.Avg.	FG-FGA	FG%	3PT-A	3PT%	FT-FTA	FT%	S	A	Pts.	PPG	Reb.	RPG
12-13	20-0	235-11.8	28-70	.400	5-16	.313	12-18	.667	11	11	73	3.7	33	1.7



23-Chase Robbins, So., G, 6-2 **One Varsity Letter**
Normal, Illinois (Normal Community H.S.)
2012-13: Played in 19 games with nine starts averaging 9.5 points per game.

Exploratory Studies major

Career Game Highs: 18 points, 6 rebounds, 5 assists, 2 steals

Year	G-GS	Min.Avg.	FG-FGA	FG%	3PT-A	3PT%	FT-FTA	FT%	S	A	Pts.	PPG	Reb.	RPG
12-13	19-9	427-22.5	57-139	.410	12-40	.300	55-77	.714	13	30	181	9.5	36	1.9

Returning Letter winners



55-Mitch Wilfer, So., F/C, 6-8
Wentzville, Missouri (Holt H.S.)

One Varsity Letter

2012-13: Started in all 25 games 4.6 points and three rebounds per game.

Communication major

Career Game Highs: 15 points, 9 rebounds, 2 points, 2 steals

Year	G-GS	Min.Avg.	FG-FGA	FG%	3PT-A	3PT%	FT-FTA	FT%	S	A	Pts.	PPG	Reb.	RPG
12-13	25-25	432-17.3	52-119	.437	0-0	.000	10-25	.400	11	13	114	4.6	75	3.0



24-Trent Windemuller, So., G, 6-2
Holland, Michigan (Holland H.S.)

One Varsity Letter

2012-13: Played in all 25 games with 14 starts averaging seven points per game.

Sports Management major

Career Game Highs: 26 points, 5 rebounds, 4 assists, 3 steals

Year	G-GS	Min.Avg.	FG-FGA	FG%	3PT-A	3PT%	FT-FTA	FT%	S	A	Pts.	PPG	Reb.	RPG
12-13	25-14	598-23.9	57-158	.361	42-117	.359	24-27	.889	20	25	180	7.2	42	1.7



Newcomers



30 Bryn Agnew, Fr., F, 6-8
Towanda, Ill.
University H.S.
Human Services major



44 Brody Bence, Fr. F, 6-8
Shelbyville, Ill.
Shelbyville H.S.
Communication major



24 Gregg Boomer, Fr., G, 6-0
Decatur, Ill.
Argenta-Oreana H.S.
Entrepreneurship major



42 Shaq Edwards, Fr., F, 6-5
St. Louis, Mo.
McCluer H.S.
Sports Management major



22 Michael Morawiec, Fr., G, 6-2
Norridge, Ill.
Ridgewood H.S.
Physical Education major



20 Jeremy Pezzelle, Fr., G, 5-9
Decatur, Ill.
LSA H.S.
Athletic Training major



5 DeMarcus Shannon, Fr., G, 6-4
Chicago, Ill.
University H.S.
Athletic Training major



10 Shakar Washington, Fr., G, 5-10
Joliet, Ill.
Joliet Catholic H.S.
Sociology major

BIG BLUE™

2012-13 Results & Statistics

Overall record: 8-17 Conf: 4-10 Home: 5-5 Away: 3-8 Neutral: 0-4

##	Player	gp-gs	min	avg	Total		3-Point		F-Throw		Rebounds				pf	dq	a	to	blk	stl	pts	avg
					fg-fga	fg%	3fg-fga	3fg%	ft-fa	ft%	off	def	tot	avg								
11	Griffin, TJ	24-23	694	28.9	106-272	.390	40-105	.381	44-67	.657	15	38	53	2.2	41	0	68	56	1	61	296	12.3
22	Johnson, Deavis	23-12	594	25.8	96-187	.513	1-8	.125	58-114	.509	74	130	204	8.9	82	5	33	63	27	34	251	10.9
23	Robbins, Chase	19-9	427	22.5	57-139	.410	12-40	.300	55-77	.714	9	27	36	1.9	45	1	30	56	0	13	181	9.5
04	Windemuller, Trent	25-14	598	23.9	57-158	.361	42-117	.359	24-27	.889	4	38	42	1.7	39	0	25	30	1	20	180	7.2
05	Kinmon, Elijah	24-22	561	23.4	50-144	.347	26-83	.313	31-42	.738	16	55	71	3.0	51	0	19	35	9	22	157	6.5
20	Tueth, Alex	17-3	193	11.4	29-53	.547	0-2	.000	20-31	.645	18	20	38	2.2	14	0	6	13	2	5	78	4.6
55	Wilfer, Mitch	25-25	432	17.3	52-119	.437	0-0	.000	10-25	.400	22	53	75	3.0	64	4	13	29	18	11	114	4.6
24	Clark, Rodney	22-4	392	17.8	33-79	.418	13-30	.433	15-22	.682	13	46	59	2.7	34	0	34	18	4	22	94	4.3
35	Owens, Jaylon	24-11	440	18.3	32-89	.360	1-11	.091	30-62	.484	36	67	103	4.3	57	1	22	45	3	8	95	4.0
44	Pilackas, Tommy	20-0	235	11.8	28-70	.400	5-16	.313	12-18	.667	10	23	33	1.7	25	0	11	15	3	11	73	3.7
00	Gardner, Tives	21-1	223	10.6	19-66	.288	6-25	.240	10-15	.667	6	10	16	0.8	24	0	19	25	0	15	54	2.6
10	Godwin, Geoffrey	14-0	35	2.5	6-13	.462	3-7	.429	7-11	.636	2	0	2	0.1	2	0	2	4	0	2	22	1.6
34	Bollier, Drew	15-0	68	4.5	8-13	.615	4-8	.500	1-3	.333	0	3	3	0.2	9	0	2	5	0	2	21	1.4
40	Knapp, Brady	12-0	47	3.9	6-12	.500	1-4	.250	2-2	1.000	5	3	8	0.7	7	0	2	3	0	0	15	1.3
21	Kueker, Jacob	12-1	31	2.6	2-6	.333	0-2	.000	4-6	.667	5	9	14	1.2	3	0	1	3	0	0	8	0.7
42	Kendrex, Troy	6-0	14	2.3	0-2	.000	0-0	.000	1-2	.500	1	1	2	0.3	2	0	0	0	0	0	1	0.2
14	Coltrane, Brennan	7-0	12	1.7	0-2	.000	0-1	.000	1-2	.500	0	0	0	0.0	0	0	0	1	0	0	1	0.1
13	Day, Parker	12-0	24	2.0	0-2	.000	0-0	.000	0-0	.000	0	0	0	0.0	6	0	1	0	0	1	0	0.0
33	Babb, David	3-0	3	1.0	0-0	.000	0-0	.000	0-0	.000	0	0	0	0.0	1	0	0	1	0	0	0	0.0
Team											47	36	83		1		9					
Total.....		25	5023		581-1426	.407	154-459	.336	325-526	.618	283	559	842	33.7	507	11	288	411	68	227	1641	65.6
Opponents.....		25	5025		626-1364	.459	137-397	.345	394-570	.691	269	651	920	36.8	464	-	346	434	83	193	1783	71.3

TEAM STATISTICS	MILLIKIN	OPP
SCORING	1641	1783
Points per game	65.6	71.3
Scoring margin	-5.7	-
FIELD GOALS-ATT	581-1426	626-1364
Field goal pct	.407	.459
3 POINT FG-ATT	154-459	137-397
3-point FG pct	.336	.345
3-pt FG made per game	6.2	5.5
FREE THROWS-ATT	325-526	394-570
Free throw pct	.618	.691
F-Throws made per game	13.0	15.8
REBOUNDS	842	920
Rebounds per game	33.7	36.8
Rebounding margin	-3.1	-
ASSISTS	288	346
Assists per game	11.5	13.8
TURNOVERS	411	434
Turnovers per game	16.4	17.4
Turnover margin	+0.9	-
Assist/turnover ratio	0.7	0.8
STEALS	227	193
Steals per game	9.1	7.7
BLOCKS	68	83
Blocks per game	2.7	3.3
ATTENDANCE	5565	8351
Home games-Avg/Game	10-556	11-625
Neutral site-Avg/Game	-	4-370

Score by Periods	1st	2nd	OT	Totals
MILLIKIN	786	842	13	1641
Opponents	844	920	19	1783

Date	Opponent	Score	Att.
11/16/12	vs Loras	L 76-78	604
11/17/12	vs Coe College	L 60-67	275
11/20/12	at Blackburn College	w 60-51	225
11/28/12	FRANKLIN COLLEGE	L 73-82	405
12/1/12	PRINCIPIA	w 79-69	325
12/4/12	FONTBONNE	w 87-77	510
12/07/12	vs Mo. Baptist	L 77-81	300
12/08/12	vs Mid-Continent	Lot 72-78	300
12-12-12	at Rose-Hulman	L 43-67	450
12/15/12	at Aurora University	L 77-92	261
12/29/12	at Rockford College	w 78-75	101
* 1/2/2013	CARTHAGE	w 71-59	225
* 01/05/13	at North Park	w 68-59	112
* 1/9/13	ELMHURST	w 77-72	425
* 1/12/13	at Wheaton College	L 71-91	786
* 1/16/13	at North Central	L 44-66	685
* 1/19/13	ILLINOIS WESLEYAN	L 60-93	1025
* 1/23/13	AUGUSTANA	L 54-63	625
* 1-26-13	at CARTHAGE	L 47-71	850
* 1/30/13	at ELMHURST	L 61-68	475
* 2/2/13	NORTH PARK	w 91-71	675
* 2/6/13	NORTH CENTRAL	L 58-59	575
* 2/9/13	WHEATON COLLEGE	L 52-62	775
* 2/16/13	at Illinois Wesleyan	L 54-68	2580
* 02/19/13	at Augustana	L 51-64	347

* - Conference game



Big Blue Record Book

Points

Game: 62, Jack Sunderlik vs. Carroll (1/7/67)
62, Leon Gobczynski vs. UM-St. Louis (2/22/74)

Season: 967, Leon Gobczynski (1973-74)

Career: 2,635, Leon Gobczynski (1971-75)

Freshman: 494, Jesse Price (1965-66)

Sophomore: 537, Shannon Cloyd (1992-93)

Junior: 967, Leon Gobczynski (1973-74)

Senior: 888, Scott Steagall (1950-51)

Field Goals

Game: 26, Jack Sunderlik vs. Carroll (1/7/67)
26, Leon Gobczynski vs. Um-St. Louis (2/22/74)

Season: 424, Leon Gobczynski (1973-74)

Career: 1,132, Leon Gobczynski (1971, 75)

Consecutive Field Goals

12, Gary Jackson (1/26/79-1/29/79)

Field Goal Attempts

Game: 44, Leon Gobczynski vs. UM-St. Louis 2/22/74

Season: 879, Scott Steagall (1950-51)

Career: 1,999, Leon Gobczynski (1971-75)

Field Goal Percentage

Game: 100.0 (10-10), Denny Wickline vs. Carthage (2/20/70)

Season: 68.4 (80-117), Antione Ford (1998-99)

Career: 64.3 (136-209), Antione Ford (1997-00)

Three-Point Field Goals

Game: 9, Joe Guin vs. Wabash (12/6/86)
9, Jason Fisher vs. Lake Erie (12/3/03)

Season: 87, Chris Wetzel (1994-95)

Career: 250, Chris Wetzel (1991-95)

Three-Point Field Goal Attempts

Game: 16, Chris Wetzel vs. Washington (Mo.) (12/7/94; vs. Carthage (2/8/95)

Season: 210, Joe Guin (1987-88)

Career: 621, Jason Fisher (2001-05)

Three-Point Field Goal Percentage

Game (min. 5 att.): 100.0 (7-7), Chris Wetzel vs. Ithaca (11/18/94); 1.000, Jason Fisher vs. Chapman (12/31/04)

Season: 49.0 (25-51), Mike Gavic (2005-06)

Career: 45.6 (154-338), Brian Horst (1986-89)

Consecutive Games with a Three-Point Field Goal

31, Brian Horst (2/19/88-3/3/89)

Free Throws

Game: 21, Scott Steagall vs. Augustana (2/24/51)

Season: 260, Scott Steagall, (1950-51)

Career: 527, Scott Steagall (1947-51)

Consecutive: 42, Jeff Thompson (1989-91)

Free Throw Attempts

Game: 24, Scott Steagall vs. Augustana (2/24/51)

Season: 324, Scott Steagall (1950-51)

Career: 741, Scott Steagall (1947-51)

Visit our website for the latest news and information on all your favorite Big Blue teams.

athletics.millikin.edu

Basketball Magazine Credits

The 2013-14 Men's Basketball Magazine was prepared by Assistant Athletic Director for Sports Information and Athletic Communication Byran Marshall. Action Photography by Kevin Krows

Big Blue Record Book

Free Throw Percentage

Game: Several players with 100.0 led by Jeff Bottorff (13-13) vs. Monmouth (3/4/89)

Season: 93.3 (42-45) Gary Jackson (1979-80)

Career: 87.9 (124-141) Jerry Gray (1968-71)

Rebounds

Game: 39, Roger Lotchin vs. Lake Forest (2/21/56)

Season: 560, Roger Lotchin (1955-56)

Career: 1,437, Jesse Price (1965-66)

Assists

Game: 14, Roy Mosser vs. Iowa Wesleyan (1/25/75)

Season: 149, Roy Mosser (1974-75)

Career: 425, Adam Provance (1995-99)

Games

Played: 105, Roy Mosser (1973-77)

Started: 104, Dave Pistorius (1975-79)

Scoring Leaders

1,000 +

Player (Seasons)	Pt.s	Gms.	Avg.
1. Leon Gobczynski (1971-75)	2,635	94	28.0
2. Jesse Price (1965-69)	2,222	90	24.7
3. Scott Steagall (1947-51)	2,127	98	21.7
4. Bart Barnes (1984-88)	1,749	104	16.8
5. Eric Smith (1992-94, 95-97)	1,712	96	17.8
6. Roger Lotchin (1953-57)	1,548	88	17.6
7. Gary Dietelhoff (1970-74)	1,519	88	17.3
8. Shannon Cloyd (1991-94)	1,518	80	18.9
9. Dan Parker (1969-73)	1,516	79	19.2
10. Bob Kowa (1949-53)	1,508	96	15.7
11. Brian Horst (1985-89)	1,464	100	14.6
12. Brad Skowronski (1997-01)	1,462	100	14.6
13. Wayne Dunning (1979-83)	1,456	101	14.4
14. Don Walker (1959-63)	1,404	82	17.1
15. Mark Kreke (1976-80)	1,400	102	13.7
16. Dave Pistorius (1975-79)	1,373	104	13.2
17. Adam Provance (1995-99)	1,319	91	14.5
18. Jack Sunderlik (1964-65, 66-68)	1,279	53	24.1

19. Chuck Williams (2001-05)	1,274	100	12.7
20. Roy Mosser (1973-77)	1,244	105	11.8
21. John Lograsso (1967-70)	1,233	70	17.6
22. Chris Wetzel (1991-94)	1,214	101	12.0
23. Eddie Taylor (1981-84)	1,180	78	15.1
24. Donald Petty (1953-57)	1,174	84	14.0
25. Jason Fisher (2001-05)	1,171	96	12.2
26. John Luttrell (1949-53)	1,152	101	11.4
27. Gary Jackson (1977-81)	1,149	99	11.6
28. Steve Hengst (1959-63)	1,082	97	11.2
29. Tim Littrell (1974-77)	1,071	78	13.7
30. Bruce Grimes (1957-61)	1,018	75	13.6
31. Mickey Sprinkle (1954-58)	1,014	81	12.5
32. Darno Demby	1,001	101	10.0

Rebounding Leaders

Player (Seasons)	Rebs.	Gms.	Avg.
1. Jesse Price (1965-69)	1,437	90	16.0
2. Gary Dietelhoff (1970-74)	962	88	10.9
3. Roger Lotchin (1953-57)	867*	40	--
4. Wayne Dunning (1979-83)	866	101	8.6
5. Bart Barnes (1984-88)	845	104	8.1
6. Brad Skowronski (1997-01)	831	100	8.3
7. Eric Smith (1992-94, 95-97)	831	96	8.7
8. Shannon Cloyd (1991-94)	821	80	10.2
9. Leon Gobczynski (1971-75)	801	94	8.5
10. John Lograsso (1967-70)	673	70	9.6
11. Steve Hengst (1959-63)	652**	71	--

*-Total for 40 games. It does not include the 1953-54 (23 game) and 1954-55 (25 game) seasons.

**-Total for 71 games. It does not include the 1961-62 (26 game) season.

Big Blue Records Team

Victories

Season and Tournaments: 24, 1950-51

Consecutive: 17, 1919-20

Winning Percentage

Season: .958 (23-1), 1919-20

Losses

Season: 24, 2011-12

Consecutive: 20, 2010-11

Points

Game: 133 vs. Carroll (1/7/67)

Season: 2,580 in 27 games (1973-74)

Season Avg.: 95.5 in 27 games (1973-74)

Points Allowed

Game: 137 vs. Eastern Illinois (2/28/59)

Season: 2,341 in 26 games (1974-75)

Season Avg.: 92.7 in 23 games (1970-71)

Point Combined

Game: 240 vs. Wheaton (1/21/70)

Season: 4,864 in 27 games (1970-71)

Field Goals

Game: 57 vs. Ill. College (95 att.) (12/5/73)

Season: 1,083 (2,094 att.) (1973-74)

Field Goal Attempts

Game: 117 vs. Carroll (55 made) (1/7/67)

Season: 2,094 (1,083 made) (1973-74)

Field Goal Percentage

Game: 71.4 vs. Pomona-Pitzer (1/6/89)

Season: 51.7 (1973-74 and 1979-80)

Three-Point Field Goals

Game: 17 (17-31) vs. Lake Erie (12/30/03)

Season: 237 (1994-95)

Three-Point Field Goal Attempts

Game: 37 vs. Carthage (12 made) (2/8/05)

Season: 602 (205 made) (2001-02)

Three-Point Field Goal Percentage

Game: 80.0 (12-15) vs. Wheaton (1/16/88)

80.0 (8-10) vs. Washington (Mo.) (11/24/93)

Season: 41.5 (200-482) (1990-91)

Free Throws

Game 43 vs. Shurtleff (1/28/54)

Season: 603 (1950-51)

Free Throw Attempts

Game: 61 vs. Shurtleff (1/28/54)

Season: 853 (1956-57)

Free Throw Percentage

Game 100.0 (15-15) vs. Capital (12/30/94)

Season: 77.1 (330-428) (1979-80)

Rebounds

Game: 74 vs. Lake Forest (2/27/60)

Season: 1,356 in 27 games (1973-74)

Season Avg.: 51.3 in 23 games (1970-71)

Assists

Game: 28 vs. Lake Erie (12/30/03)

Season: 454 in 20 games (1969-70)

Steals

Game: 19 vs. SIU-Edwardsville (12/18/82)

Season: 287 in 25 games (1998-99)

A Season at a Time

Year	W-L	Pct.
1903-04	1-2	.333
1904-05	---	---
1905-06	1-1	.500
1906-07	0-5	.000
1907-08	0-3	.000
1908-09	1-8	.111
1909-10	4-3	.571
1910-11	10-7	.588
1911-12	10-5	.667
1912-13	11-4	.733
1913-14	12-4	.750
1914-15	11-4	.733
1915-16	16-5	.762
1916-17	14-6	.700
1917-18	10-11	.476
1918-19	12-4	.750
1919-20	23-1	.957
1920-21	18-6	.750
1921-22	5-12	.294
1922-23	11-6	.647
1923-24	10-12	.455
1924-25	10-7	.588
1925-26	11-5	.667
1926-27	10-9	.500
1927-28	4-11	.267
1928-29	12-6	.647
1929-30	9-9	.500
1930-31	11-7	.611
1931-32	7-8	.467
1932-33	2-12	.143
1933-34	10-5	.667
1934-35	9-3	.750
1935-36	11-6	.647
1936-37	1-12	.077
1937-38	8-8	.500
1938-39	6-11	.353
1939-40	3-14	.176
1940-41	11-7	.611
1941-42	10-8	.555
1942-43	6-10	.375
1943-44	---	---
1944-45	---	---
1945-46	6-10	.375
1946-47	15-5	.750
1947-48	18-7	.720
1948-49	12-11	.522
1949-50	14-11	.560
1950-51	24-7	.774
1951-52	21-6	.781
1952-53	15-8	.652
1953-54	16-7	.696
1954-55	17-8	.689
1955-56	15-8	.652
1956-57	18-9	.667
1957-58	4-19	.173
1958-59	4-17	.190
1959-60	5-20	.200
1960-61	13-13	.500
1961-62	7-18	.280
1962-63	10-12	.454
1963-64	4-17	.190
1964-65	11-8	.578
1965-66	10-10	.500
1966-67	17-3	.850
1967-68	21-4	.840
1968-69	16-9	.640
1969-70	8-12	.400
1970-71	12-11	.522
1971-72	10-11	.476
1972-73	15-8	.652
1973-74	22-5	.815
1974-75	13-13	.500
1975-76	11-15	.423
1976-77	15-11	.577
1977-78	13-13	.500
1978-79	17-9	.654
1979-80	14-11	.560
1980-81	14-12	.538
1981-82	13-11	.542
1982-83	21-7	.750
1983-84	12-14	.462
1984-85	3-23	.115
1985-86	9-17	.346
1986-87	17-8	.680
1987-88	22-6	.786
1988-89	20-7	.741
1989-90	11-14	.440
1990-91	14-12	.538
1991-92	15-11	.577
1992-93	13-12	.520

1993-94	17-8	.680	2006-07	9-16	.360
1994-95	14-11	.560	2007-08	9-16	.360
1995-96	8-17	.320	2008-09	16-9	.640
1996-97	10-15	.400	2009-10	7-18	.280
1997-98	10-15	.400	2010-11	1-23	.043
1998-99	17-8	.680	2011-12	1-24	.04
1999-00	15-10	.600	2012-13	8-17	.320
2000-01	10-15	.400	Totals	1181-	.522
2001-02	8-17	.320		1083	
2002-03	7-18	.280			
2003-04	14-11	.560			
2004-05	12-13	.480			
2005-06	10-15	.400			



Division III

DISCOVER | DEVELOP | DEDICATE

All-Time Records vs. Opponents

Opponent	W	L	Opponent	W	L	Opponent	W	L
Adrian	1	2	Hedding	7	1	Ottawa (Kan.)	1	0
Albion	1	0	Hope	1	0	Peorians	0	1
Anderson	4	3	Illinois	1	11	Piedmont	0	1
Arkansas State	7	1	Illinois College	83	27	Plattsburgh State	0	0
Armour Tech	3	1	Illinois Institute Tech.	2	0	Pomona-Pitzer	1	0
Arthur Indees	0	1	Illinois State	36	26	Principia	7	1
Augustana	54	85	Illinois Wesleyan	78	140	Quincy	12	17
Aurora	11	18	Indiana State	0	2	Redlands	1	0
Austin	1	0	Ind./Pur.-Ft. Wayne	1	0	Regis	1	0
Beloit	6	5	Ind./Pur.-Indianapolis	4	2	Ripon	1	0
Bemidji State	1	0	Indiana Univ. East	1	0	Robert Morris, Spring.	3	2
Berea	1	0	Indiana Univ. NW	8	0	Rockford	3	2
Bishop, TX	1	0	Indianapolis	4	11	Rockhurst	1	0
Blackburn	16	7	Iowa	2	4	Rollins	0	1
Bluffton	0	2	Iowa Wesleyan	1	1	Rose-Hulman	7	5
Bradley	24	29	Ithaca	1	0	Scott Field	1	0
Butler	0	1	Judson	3	0	Shurtleff	9	0
California-San Diego	1	1	Ky. Wesleyan	1	0	SIU-Carbondale	15	11
California-Tech	1	0	Kenyon	0	2	SIU-Edwardsville	2	2
Camp Atterbury	0	2	Knox	5	5	SE Missouri State	3	2
Capital	2	2	Lake Erie	1	0	Southwest Baptist	1	0
Carroll	45	29	Lake Forest	23	17	SW Missouri State	0	1
Carthage	56	58	LaVerne	2	0	SW Texas State	0	1
Catholic Univ.	0	1	Lewis	2	1	Sparks	17	7
Centenary	1	1	Lincoln	8	3	St. Ambrose	2	1
Central Arkansas	1	0	Lombard	3	0	St. Francis	1	1
Central State (Ohio)	0	1	Loras	0	1	St. Joseph's	0	2
Centre	0	1	Loyola (Ill.)	0	7	St. Mary's (MN)	0	1
Chapman	1	0	Macalester	1	1	St. Viator	15	14
Chicago	0	1	MacMurray	36	9	Tampa	0	1
Chowan	1	0	Marian	0	1	Texas College	1	0
Christian Brothers	2	1	Marquette	3	1	Texas Wesleyan	1	0
Claremont	0	1	Maryland Bible	1	0	Transylvania	0	1
Calremont M.-Scripps	0	1	Mary Hardin Baylor	0	1	Tiffin	0	1
Clinton YMCA	2	0	Maryville	1	1	Trinity	1	1
Clarke	0	1	McKendree	14	5	Tufts	0	1
Coe	0	4	Menlo	1	0	Victory Ordinance	1	0
Colorado Christian	0	1	Mid-Continent	0	1	Wabash	7	11
Colorado College	0	1	Millsaps	0	1	Washburn	1	0
Concordia (Ill.)	6	0	Milton	1	0	Washington (Mo.)	18	9
Concordia (Mich.)	1	0	Minnesota	0	1	Wayland	1	0
Concordia (Wis.)	0	0	Mississippi College	1	0	Webster	9	5
Cornell (Iowa)	1	1	Missouri-Rolla	3	2	West Coast Baptist	1	0
Culver-Stockton	1	0	Missouri-St. Louis	5	7	Western Carolina	0	1
Decatur High	1	1	Missouri Baptist	0	2	Western Illinois	6	16
Decatur YMCA	2	9	Missouri Valley	1	0	Western New Mexico	1	0
DePauw	17	15	Monmouth	3	9	Westminster (Mo.)	0	0
Defiance	1	0	Morrison Field	1	0	Wheaton	50	64
Dominican	1	0	Mt. Union	0	1	Whittier	0	1
East Texas Baptist	1	0	Mt. Vernon Legion	1	0	Whitworth	0	1
Eastern Illinois	48	55	Muhlenberg	1	0	William & Vashti	2	3
Eastern New Mexico	1	0	Nebraska	1	0	William Penn	1	1
Elmhurst	72	48	Nebraska Wesleyan	1	10	Wisconsin	0	1
Elon	1	0	New Mexico	0	1	Wis.-Stout	0	0
Eureka	32	21	New York Nationals	1	0	Wis.-Whitewater	1	1
Evansville	2	3	North Central	83	65	Wittenberg	0	2
Florida State	1	0	North Dakota State	1	3	Wood River Legion	0	2
Fontbonne	1	0	North Park	53	51	Wooster	1	0
Franklin	13	21	NE Missouri State	1	7	WPI	1	0
Goshen	0	1	Northern Illinois 4	2	0	York (NY)	1	1
Goucher	1	0	Northwestern	1	0			
Grand Canyon	0	1	Notre Dame	1	1			
Great Lakes	1	1	Oakland City	2	0			
Greenville	0	1	Occidental	1	0			
Grinnell	2	0	Oglethorpe	0	1			
Hamline	0	3	Ohio Dominican	0	1			
Hardin Simmons	1	0	Olivet Nazarene	8	5			
Hawaiian All-Stars	2	0						

2013-14 Opponents in bold

CCIW History

Entering its 68th season in 2013-14, the College Conference of Illinois and Wisconsin (CCIW) enjoys a reputation as the "Best Small-College Conference in the Nation." During the 2012-13 academic year, the CCIW honored over 1,400 academic all-conference recipients, 15 CoSIDA Academic All-Americans, 30 CoSIDA Academic All-District recipients, 68 all-Americans and one national championship team.

CCIW schools have accounted for 46 national championships in NCAA Division III competition, including 15 in men's cross country, six in men's basketball, six in men's outdoor track and field, four in football and men's indoor track and field, three in women's soccer, two in women's outdoor track & field, women's basketball and men's soccer and one apiece in baseball and women's indoor track and field.

The conference was formed with nine charter members (Augustana, Carthage, Elmhurst, Illinois College, Illinois Wesleyan, Lake Forest, Millikin, North Central and Wheaton) on April 26, 1946, in Jacksonville, Ill., and opened competition in the 1946-47 academic year as the College Conference of Illinois. In 1967, the name was changed to the College Conference of Illinois and Wisconsin, to recognize Carthage, which moved to Kenosha, Wis., in 1962 and Carroll, which entered the conference in 1955.

The CCIW sponsors 21 sports: baseball, men's and women's basketball, men's and women's cross country, football, men's and women's golf, men's and women's soccer, softball, men's and women's swimming, men's and women's tennis, men's and women's indoor track & field, men's and women's outdoor track & field, volleyball and wrestling.

CCIW Facts

CCIW Sports Information Director - Mike Krizman
 Phone: 630.637.5719
 CCIW Fax: 630.637.5694
 CCIW Website: www.cciw.org

CCIW Members

- | | |
|------------------------------|-----------------------|
| Augustana College | Rock Island, Illinois |
| Carthage College | Kenosha, Wisconsin |
| Elmhurst College | Elmhurst, Illinois |
| Illinois Wesleyan University | Bloomington, Illinois |
| Millikin University | Decatur, Illinois |
| North Central College | Naperville, Illinois |
| North Park University | Chicago, Illinois |
| Wheaton College | Wheaton, Illinois |

Big Blue on CCIW First-Team

- Toby Althoff 1946-47, 1947-48
- Bart Barnes 1986-87, 1987-88
- Shannon Cloyd 1992-93, 1993-94
- Jack Dettro 1954-55
- Wayne Dunning 1980-81, 1981-82, 1982-83
- Leon Gobczynski 1973-74, 1974-75
- Bruce Grimes 1960-61
- Jim Harris 1964-65
- Jerry Hill 1967-68
- Brian Horst 1988-89
- Bob Kowa 1951-52, 1952-53
- Mark Kreke 1979-80
- Roger Lotchin 1954-55, 1955-56, 1956-77
- John Luttrell 1951-52, 1952-53
- Bud Ormand 1949-50
- Dan Parker 1971-72, 1972-73
- Don Petty 1956-57
- Jesse Price 1965-66, 1966-67, 1967-68, 1968-69
- Adam Provance 1998-99
- Eric Smith 1995-96, 1996-97
- Terry Smith 1956-57
- Scott Steagall 1948-49, 1949-50, 1950-51
- Jack Sunderlik 1966-67, 1967-68
- Chris Wetzal 1994-95

All-Time CCIW Results

School	W-L	Percentage
Illinois Wesleyan	680-260	.723
Augustana	559-376	.598
Wheaton	487-356	.578
North Park	374-382	.495
Millikin	454-484	.484
Carthage	362-466	.436
North Central	384-557	.408
Elmhurst	326-520	.385
Lake Forest*	85-112	.432
Illinois College*	28-41	.406
Carroll*	187-364	.339
*=no longer in CCIW		

Big Blue CCIW Championships

1946-47, 1947-48, 1949-50, 1950-51, 1951-52, 1954-55, 1967-68, 1982-83, 1988-89

Post-Season Tournament Appearances

NAIA District 1946-47, 1947-48, 1949-50, 1950-51, 1951-52, 1952-53, 1953-54, 1954-55, 1956-57, 1967-68, 1968-69, 1973-74

NAIA National 1950-51, 1951-52, 1967-68, 1968-69

NCAA Regional 1982-83, 1987-88, 1988-89



2013-14 Big Blue Schedule

<u>Date</u>	<u>Opponent</u>	<u>Location</u>	<u>Time</u>
Nov. 15	Greenville College (CCIW/SLIAC Challenge)	Fulton, Mo.	3 p.m.
Nov. 16	Westminister (CCIW/SLIAC Challenge)	Fulton, Mo.	5 p.m.
Nov. 20	Aurora University	Decatur, Ill.	7 p.m.
Nov. 22	Loras College	Dubuque, Iowa	7 p.m.
Nov. 23	Coe College	Cedar Rapids, Iowa	7 p.m.
Nov. 30	Blackburn College	Decatur, Ill.	3 p.m.
Dec. 3	Principia College	Elsah, Ill.	7:30 p.m.
Dec. 9	Rose-Hulman	Decatur, Ill.	7 p.m.
Dec. 14	Concordia (Wis.)	Decatur, Ill.	3 p.m.
Dec. 28	Wisconsin-Stout (Land of Magic Classic)	Daytona Beach, Fla.	6 p.m. ET
Dec. 29	Plattsburgh State (Land of Magic Classic)	Daytona Beach, Fla.	6 p.m. ET
Jan. 4	**Wheaton College	Decatur, Ill.	7 p.m.
Jan. 8	**North Central College	Naperville, Ill.	7 p.m.
Jan. 11	**Elmhurst College	Elmhurst, Ill.	4 p.m.
Jan. 15	**Illinois Wesleyan University	Decatur, Ill.	7 p.m.
Jan. 18	**Carthage College	Decatur, Ill.	7 p.m.
Jan. 22	**Augustana College	Rock Island, Ill.	7 pm.
Jan. 25	**North Park University	Chicago, Ill.	4 p.m.
Jan. 29	**Illinois Wesleyan University	Bloomington, Ill.	7 p.m.
Feb. 1	**Elmhurst College	Decatur, Ill.	7 p.m.
Feb. 5	**North Central College	Decatur, Ill.	7 p.m.
Feb. 8	**Wheaton College	Wheaton, Ill.	7 p.m.
Feb. 12	**Augustana College	Decatur, Ill.	7 p.m.
Feb. 15	**North Park University	Decatur, Ill.	7 p.m.
Feb. 22	**Carthage College	Kenosha, Wis.	7 p.m.

Home Games in Bold.

**CCIW Contest