



A-STATE WOMEN'S BASKETBALL

CALEB GARNER, ASSISTANT DIRECTOR/ATHLETICS MEDIA RELATIONS
OFFICE: 870-972-2707 • CELL: 870-316-3382 • EMAIL: RGARNER@ASTATE.EDU
@ASTATEWB | #WOLVESUP

11 WNIT TOURNAMENT BIDS | 1993 NWIT CHAMPIONS | 2004, 2014 & 2016 SUN BELT CHAMPIONS

2020-21 SCHEDULE/RESULTS

OVERALL RECORD	9-1
SUN BELT CONFERENCE	4-0
NON-CONFERENCE	5-1
HOME	7-1
AWAY	2-0
NEUTRAL	0-0

DATE	RNK. (AP/USAT)	A-STATE	OPP	OPPONENT	TV/STREAM	TIME/RESULTS
11/27	-/-	-/-	-/-	ARKANSAS-PINE BLUFF	ESPN+	L 68-85
12/2	-/-	-/-	-/-	SIU-EDWARDSVILLE	ESPN+	W 80-73
12/10	-/-	-/-	-/-	at Arkansas-Pine Bluff		CANCELED
12/11	-/-	-/-	-/-	WILLIAMS BAPTIST^	ESPN+	W 96-46
12/15	-/-	-/-	-/-	CHAMPION CHRISTIAN	ESPN+	W 93-49
12/16	-/-	-/-	-/-	GRAMBLING	ESPN+	CANCELED
12/17	-/-	-/-	-/-	CHAMPION CHRISTIAN	ESPN+	W 88-38
1/1	-/-	-/-	-/-	* ULM	ESPN+	POSTPONED
1/2	-/-	-/-	-/-	* ULM	ESPN+	POSTPONED
1/4	-/-	-/-	-/-	CENTRAL BAPTIST COLL.	ESPN+	W 85-39
1/8	-/-	-/-	-/-	* TEXAS STATE	ESPN+	W 54-53
1/9	-/-	-/-	-/-	* TEXAS STATE	ESPN+	W 70-54
1/15	-/-	-/-	-/-	* at ULM	ESPN+	W 64-50
1/16	-/-	-/-	-/-	* at ULM	ESPN+	W 59-44
1/22	-/-	-/-	-/-	* LOUISIANA	ESPN+	6 P.M.
1/23	-/-	-/-	-/-	* LOUISIANA	ESPN+	4 P.M.
1/29	-/-	-/-	-/-	* at UT Arlington	ESPN+	6 p.m.
1/30	-/-	-/-	-/-	* at UT Arlington	ESPN+	4 p.m.
2/5	-/-	-/-	-/-	* at Louisiana	ESPN+	6 p.m.
2/6	-/-	-/-	-/-	* at Louisiana	ESPN+	4 p.m.
2/10	-/-	-/-	-/-	* LITTLE ROCK^	ESPN+	5 P.M.
2/13	-/-	-/-	-/-	* at Little Rock%	ESPN+	1 p.m.
2/19	-/-	-/-	-/-	* at Texas State	ESPN+	4 p.m.
2/20	-/-	-/-	-/-	* at Texas State	ESPN+	4 p.m.
2/26	-/-	-/-	-/-	* UT ARLINGTON	ESPN+	6 P.M.
2/27	-/-	-/-	-/-	* UT ARLINGTON	ESPN+	4 P.M.
3/5-8				# Sun Belt Conference Tournament		

All Times Central
Home Games In BOLD CAPS
* — SBC Game
^ — Doubleheader with men's game
— SBC Tournament (Pensacola, Fla.)

GAME INFORMATION

FRIDAY VS LOUISIANA

Date: Fri., Jan. 22, 2021

Tip-Off: 6 p.m. CT

Location: Jonesboro, Ark.

Arena: First National Bank Arena

Radio: 95.3 FM The Ticket (Jonesboro)
970 AM/96.9 FM

Radio Talent: Keith Merritt (PxP)

TV: ESPN+

Live Stats: AStateStats.com

Series History: A-State leads 52-19 (26-7 in Jonesboro)

SATURDAY VS LOUISIANA

Date: Sat., Jan. 23, 2021

Tip-Off: 4 p.m. CT

Location: Jonesboro, Ark.

Arena: First National Bank Arena

Radio: 95.3 FM The Ticket (Jonesboro)
970 AM/96.9 FM

Radio Talent: Keith Merritt (PxP)

TV: ESPN+

Live Stats: AStateStats.com

JAN. 22-23, 2021 // 6/4 P.M. CT // FIRST NATIONAL BANK ARENA // JONESBORO, ARK.



Arkansas State Red Wolves

2020-21 Record: 9-1

SBC Record: 4-0

NET: 264

Head Coach: Matt Daniel

Record at A-State: 20-20 (2nd season)

Career Record: 163-155 (11th season)

Statistical Leaders:

Points: Jireh Washington - 12.4

Rebounds: Peyton Martin - 5.5

Assists: Morgan Wallace - 3.8

GAME 11 & 12

COMPARISON (2020-21)

75.7 PPG 65.3

43.7 FG% 40.3

29.8 3FG% 31.8

65.7 FT% 72.6

44.2 REBS/G 32.6

16.6 AST/G 8.4

11.6 STL/G 6.1

2.9 BLK/G 1.7

1.1 AST/TO 0.5



Louisiana Ragin' Cajuns

2020-21 Record: 2-5

SBC Record: 1-1

NET: 177

Head Coach: Garry Brodhead

Record at UL: 137-126 (9th season)

Career Record: Same

Statistical Leaders:

Points: Brandi Williams - 14.0

Rebounds: Ty' Reona Doucet - 6.6

Assists: Jomyra Mathis - 2.7

TIP-OFF TIDBITS

- This is the 47th season of women's basketball at Arkansas State.
- Arkansas State returns home for a two-game series versus Louisiana.
- A-State is 4-0 in Sun Belt Conference play for the first time since the 2015-16 season.
- The Red Wolves are 52-19 all-time versus Louisiana, with A-State leading 26-7 in games played in Jonesboro.
- A-State has recorded 16 or more takeaways in 10 straight games to open the season.
- The Red Wolves' 9-1 start to the season is the program's best since 1999-00 (9-1).
- Peyton Martin is 24 points away from 1,000 and 19 rebounds from 500 for her career, while Morgan Wallace needs just three rebounds to reach 500 in her tenure.

POSSIBLE STARTING FIVE (BASED ON PREVIOUS GAMES)



1 JIREH WASHINGTON
PPG 12.4
APG 2.9
RPG 4.5
FG% 51.1%



3 MORGAN WALLACE
PPG 9.1
RPG 5.3
APG 3.8
FT% 77.5%



4 MYA LOVE
PPG 4.4
RPG 3.2
APG 1.6
FG% 40.0%



23 TRINITEE JACKSON
PPG 7.8
RPG 5.4
FG% 51.8%
FT% 51.3%



35 PEYTON MARTIN
PPG 10.3
RPG 5.5
FG% 47.9%
FT% 68.4%

THE SERIES

Series: A-State leads 52-19

Current Streak: Louisiana, 1

Daniel Record vs UL: 0-1

NEXT UP...

1/29: at UT Arlington | 6 p.m. CT | Arlington, Texas

1/30: at UT Arlington | 4 p.m. CT | Arlington, Texas

2/5: at Louisiana | 6 p.m. CT | Lafayette, La.

2/6: at Louisiana | 6 p.m. CT | Lafayette, La.

WHAT'S INSIDE ...

Page 1: Schedule/Introduction

Page 2: Roster/Quick Facts

Page 3: Media Information

Page 4: TV/Radio Roster

Pages 5-11: Notes

Page 12: Sun Belt Conference at-a-glance

Pages 13-14: The Last Time It Happened

Page 14: 2020-21 Results

Page 15: Head Coach Matt Daniel

Pages 16-23: Player Bios

Page 24-25: 2020-21 Stats

Page 26-28: 2020-21 Box Scores

Page 29: Broadcast Cheat Sheet

QUICK FACTS

THE BASICS

Location: Jonesboro, Arkansas
Founded: 1909
Enrollment: 14,085
Colors: Scarlet & Black
Nickname: Red Wolves
Conference: Sun Belt
System President: Dr. Charles Welch
Chancellor: Dr. Kelly Damphousse
Director of Athletics: Terry Mohajir
Senior Women's Admin: Amy Holt
Faculty Rep.: Dr. Karen McDaniel
Department Phone: 870-972-3880
Ticket Office Phone: 870-972-2781

COURT FACTS

Name: First National Bank Arena
Capacity: 10,563
Record in Arena: 330-113 (.745)
Largest Crowd: 10,892 vs Arkansas (3/24/05)

BASKETBALL HISTORY

First Year of Basketball: 1974-75
All-Time Record: 758-575 (.569)
NCAA Tournament Appearances: 0
WNIT Appearances: 11
Most Recent WNIT Appearances: 2015
WNIT Record: 14-10
Regular Season SBC Titles: 3
Most Recent Title: 2015-16
SBC Tournament Titles: 0

BASKETBALL STAFF

Head Coach: Matt Daniel
Alma Mater: Harding, 1998
Career Record: 163-155 (10th season)
School Record: 20-20 (Second Season)
Associate Head Coach: Destinee Rogers
Alma Mater: Central Arkansas, 2012
Assistant Coach: Weston Jameson
Alma Mater: Harding, 2014
Assistant Coach: Lizzie Nessling
Alma Mater: Lincoln University, 2016
Dir. of Scouting & Operations: McGhee Mann
Strength Coach: Sha'hada Artberry
Athletic Trainer: Katie Buria

2019-20 REVIEW

Overall Record: 11-19
Sun Belt Record: 8-10
Sun Belt Finish: 7th
Starters Returning/Lost: 3/2
Letterwinners Returning/Lost: 7/7
Newcomers: 6 + 2 transfer redshirts
Roster Breakdown: 4 SR, 6 JR, 2 SO, 3 FR
Returning Scoring: 67.1 percent
Returning Rebounding: 74.4 percent
Returning Assists: 61.3 percent
Returning Steals: 63.9 percent
Returning Blocks: 49.3 percent
Returning Minutes: 60.4 percent

NUMERICAL ROSTER

No.	Name	Pos	Height	Class	Hometown/Last School
1	Jireh Washington	G	5-9	Jr.	Memphis, Tenn. (Central HS)
2	Hilani Cantone	G	5-8	Fr.	Apopka, Fla. (Apopka HS)
3	Morgan Wallace	G	5-10	Sr.	Little Rock, Ark. (Pulaski Academy)
4	Mya Love	G	5-8	So.	Jonesboro, Ark. (Nettleton HS)
5	Jordyn Brown	G	5-8	Jr.	Clovis, Calif. (Fresno City College)
10	Jada Stinson	G	5-8	RJr.	Elizabethtown, Ky. (Memphis)
11	Vic Dames	G/F	6-1	Fr.	Loganville, Ga. (Grayson HS)
12	Mattie Hatcher	G	5-5	Fr.	Little Rock, Ark. (Pulaski Academy)
13	Talia Roldan	F	6-4	RJr.	Merrillville, Ind. (UAB)
14	Hailee Erickson	G	5-5	Sr.	Alton, Mo. (Three Rivers [MO] CC)
21	Seynabou Thiam	F/C	6-6	RSo.	Dakar, Senegal (McClennan [TX] CC)
23	Trinitee Jackson	F	6-3	Jr.	Hopkinsville, Ky. (Christian County HS)
24	Karolina Szydłowska	F	6-0	Jr.	Wrocław, Poland (Seward County [KS] CC)
25	Kayla Williams	F	6-1	RSr.	Memphis, Tenn. (Wichita State)
35	Peyton Martin	F	5-11	Sr.	Pine Bluff, Ark. (Watson Chapel HS)

ALPHABETICAL ROSTER

No.	Name	Pos	Height	Class	Hometown/Last School
5	Jordyn Brown	G	5-8	Jr.	Clovis, Calif. (Fresno City College)
2	Hilani Cantone	G	5-8	Fr.	Apopka, Fla. (Apopka HS)
11	Vic Dames	G/F	6-1	Fr.	Loganville, Ga. (Grayson HS)
14	Hailee Erickson	G	5-5	Sr.	Alton, Mo. (Three Rivers [MO] CC)
12	Mattie Hatcher	G	5-5	Fr.	Little Rock, Ark. (Pulaski Academy)
23	Trinitee Jackson	F	6-3	Jr.	Hopkinsville, Ky. (Christian County HS)
4	Mya Love	G	5-8	So.	Jonesboro, Ark. (Nettleton HS)
35	Peyton Martin	F	5-11	Sr.	Pine Bluff, Ark. (Watson Chapel HS)
13	Talia Roldan	F	6-4	RJr.	Merrillville, Ind. (UAB)
10	Jada Stinson	G	5-8	RJr.	Elizabethtown, Ky. (Memphis)
24	Karolina Szydłowska	F	6-0	Jr.	Wrocław, Poland (Seward County [KS] CC)
21	Seynabou Thiam	F/C	6-6	RSo.	Dakar, Senegal (McClennan [TX] CC)
3	Morgan Wallace	G	5-10	Sr.	Little Rock, Ark. (Pulaski Academy)
1	Jireh Washington	G	5-9	Jr.	Memphis, Tenn. (Central HS)
25	Kayla Williams	F	6-1	RSr.	Memphis, Tenn. (Wichita State)

PRONUNCIATION GUIDE

JIREH Washington	JYE-ruh
HILANI Cantone	Hill-AHN-ee
MYA Love	MY-uh
TALIA ROLDAN	Tuh-LEE-uh Roll-DAH-N
SEYNABOU THIAM	ZAY-na-BOO CHAHM
KAROLINA SZYDŁOWSKA	Like the state / Shid-LOW-ska

WHERE THEY'RE FROM

United States (13):

Arkansas (4): Mattie Hatcher (Little Rock), Mya Love (Jonesboro), Peyton Martin (Pine Bluff), Morgan Wallace (Little Rock)
Kentucky (2): Trinitee Jackson (Hopkinsville), Jada Stinson (Elizabethtown)
Tennessee (2): Jireh Washington (Memphis), Kayla Williams (Memphis)
California (1): Jordyn Brown (Clovis)
Florida (1): Hilani Cantone (Apopka)
Georgia (1): Vic Dames (Loganville)
Indiana (1): Talia Roldan (Merrillville)
Missouri (1): Hailee Erickson (Alton)

Poland (1): Karolina Szydłowska

Senegal (1): Seynabou Thiam

MEDIA INFORMATION

FACILITIES: Media facilities in First National Bank Arena consist of an area at floor level on the east side of the court for reporters, broadcasters and photographers, as well as a television-film booth located high on the east side of the arena. There is also a Media Room located on the west side open to the press before, during and after games. Admittance to these areas is by special credential issued only by the A-State Athletics Media Relations Office.

CREDENTIALS: Credentials for home games are provided to those members of the media who are covering the game in a full working capacity. Requests with names should be submitted in writing on company letterhead. Passes will be mailed to valid applicants as long as time permits; otherwise, passes may be claimed at the Media Entrance on the east side of the arena (Lower Green Entrance). Spouses, dates, children and non-workers are NOT permitted in the media areas. Passes must be displayed at all times, and A-State reserves the right to revoke passes and privileges at any time due to misrepresentation or misconduct. Requests for road game credentials may be made through the A-State Media Relations Women's Basketball SID (Caleb Garner).

PARKING: A limited number of parking spaces are available to members of the media on a paved lot adjacent to the Media Entrance (Lower Green Entrance) on the east side of the arena, Lot "A". Display a parking pass to the working attendant for admittance. Parking is on a first-come, first-serve basis. All parking pass requests should be made to the Athletics Media Relations Office.

ENTRY: Media representatives with proper A-State issued credentials will be allowed entrance ONLY at the Media Entrance (Lower Green Entrance) on the east side of First National Bank Arena. This is also the main entry to the athletics offices and is adjacent to the Media parking area. Upon entry, a temperature screening will be done in accordance with Sun Belt Conference COVID-19 policy.

PHOTOGRAPHERS: In accordance with Sun Belt COVID-19 policy, no photographers or videographers, with the exception of two (2) per game determined by the A-State

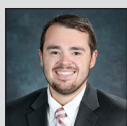
ATHLETICS MEDIA RELATIONS STAFF



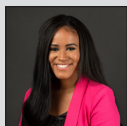
Jerry Scott
Assistant A.D./Media Relations
Office: (870) 972-3405
Cell: (870) 243-6021
jsscott@astate.edu



Mark Taylor
Associate Director
Office: (870) 972-3547
Cell: (870) 219-5705
martaylor@astate.edu



Caleb Garner (WBB SID)
Assistant Director
Office: (870) 972-2707
Cell: (870) 316-3382
rgarner@astate.edu



Miya Garrett
Assistant Director
Office: (870) 972-2541
Cell: (870) 882-4576
mgarrett@astate.edu

Primary Phone: (870) 972-2541

Mailing Address:

P.O. Box 1000, State University, AR 72467

Delivery Address:

217 Olympic Dr., Jonesboro, AR 72401

Media Relations staff, will be allowed to shoot courtside this season. Court access credentials are required to shoot from courtside. All other photographers will be asked to shoot from the mezzanine level. Certified photographers of newspapers, magazines, wire services and TV stations must request passes in writing. No credentials will be issued to freelance photographers unless authorized by A-State Media Relations.

INTERVIEWS: Head Coach Matt Daniel will be available in the Hames Conference Room in First National Bank Arena after each game, following his radio interview. A-State student-athletes will also be available by request at this time. In accordance with Sun Belt policy, appropriate social distancing must be observed and masks must be worn. The A-State women's basketball locker room is CLOSED to the media following games. To arrange for a student-

athlete interview during the week, contact Caleb Garner, Assistant Athletic Media Relations Director at (870) 972-2707. All interviews must be approved by a member of the coaching staff.

INJURY INFORMATION POLICY: A student-athlete's protected health information is protected by federal regulations under either the Health Information Portability and Accountability Act (HIPAA) or the Family Educational Rights and Privacy Act of 1974 (the Buckley Amendment) and may not be disclosed without either the student-athlete's authorization under HIPAA or their consent under the Buckley Amendment. Authorized/consented injury information pertaining to a student-athlete shall be released to the media through the Athletics Media Relations Department after being authorized by the athletic trainer. It's also appropriate in post-game or weekly press conferences for head coaches to announce team injury updates. It's the policy of the Department of Athletics to provide accurate information on injuries and not withhold injury information from the media. Team physicians may be available to offer explanation on injuries if requested by the athletic trainer. Any sideline or locker room report made to the media shall be made by an athletic trainer, team physician, or a media relations staff representative.

RADIO: Radio broadcasts of Red Wolves men's basketball will be on the EAB Red Wolves Sports Network and will also be available over the Internet. Keith Merritt is the longtime "Voice of the Red Wolves". The visiting team's "official" radio station, as designated by the visitors' SID, will be permitted origination privileges. A courtesy line is provided courtside. Any questions regarding broadcasts or the use of facilities should be directed to Caleb Garner, Assistant Athletics Media Relations Director.

WEB ACCESS: Schedules, rosters, statistics, student-athlete bios, news, etc. are available on the official A-State Athletics website at www.AStateRedWolves.com and then click on women's basketball.

2020-21 ARKANSAS STATE RADIO/TV ROSTER



1 JIREH WASHINGTON
G • 5-9 • Jr. • Memphis, Tenn.



2 HILANI CANTONE
G • 5-8 • Fr. • Apopka, Fla.



3 MORGAN WALLACE
G • 5-10 • Sr. • Little Rock, Ark.



4 MYA LOVE
G • 5-8 • So. • Jonesboro, Ark.



5 JORDYN BROWN
G • 5-8 • Jr. • Clovis, Calif.



10 JADA STINSON
G • 5-8 • R.Jr. • Elizabethtown, Ky.



11 VIC DAMES
G/F • 6-0 • Fr. • Loganville, Ga.



12 MATTIE HATCHER
G • 5-5 • Fr. • Little Rock, Ark.



13 TALIA ROLDAN
F • 6-4 • R.Jr. • Merrillville, Ind.



14 HAILEE ERICKSON
G • 5-5 • Sr. • Alton, Mo.



21 SEYNABOU THIAM
F/C • 6-6 • RSo. • Dakar, Senegal



23 TRINITEE JACKSON
F • 6-3 • Jr. • Hopkinsville, Ky.



24 KAROLINA SZYDLOWSKA
F • 6-0 • Jr. • Wroclaw, Poland



25 KAYLA WILLIAMS
F • 6-1 • RSr. • Memphis, Tenn.



35 PEYTON MARTIN
F • 5-11 • Sr. • Pine Bluff, Ark.



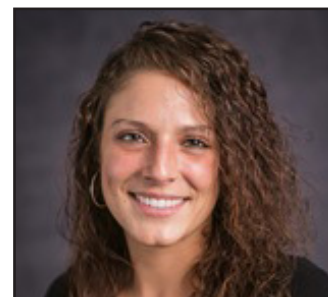
MATT DANIEL
Head Coach • 2nd Year



DESTINEE ROGERS
Assoc. Head Coach • 2nd Year



WESTON JAMESON
Assistant Coach • 1st Year



LIZZIE NESSLING
Assistant Coach • 1st Year

KNOW THE FOE: LOUISIANA RAGIN' CAJUNS

- Louisiana enters this weekend's two-game series 2-5 overall and 1-1 in Sun Belt Conference play after having its last four contests at Little Rock and versus UT Arlington postponed due to COVID-19 issues. The Ragin' Cajuns last played Jan. 1-2 at Texas State, splitting with the Bobcats. Louisiana dropped a 71-63 decision in the Friday matchup before defeating Texas State 67-41 on Saturday.
- Brandi Williams leads the team in scoring (14.0 per game) and averages 2.9 rebounds. She shoots 45.5 percent from the field, as well as a league-best 43.8 percent from three-point range. Her free-throw percentage of 85.0 percent also leads the Sun Belt. Ty'Reona Doucet is the team's top rebounder, averaging 6.6 boards and 10.6 points, while Skyler Goodwin averages 9.7 points and 5.3 rebounds.
- As a team, Louisiana ranks third in the league in free-throw percentage, shooting at a 72.6 percent clip. The Ragin' Cajuns also rank fourth in three-point field-goal percentage (31.8 percent) and turnover margin (+1.71) while being second behind A-State in turnovers per game (15.6).

AN ARKANSAS STATE WIN WOULD ...

- A win on Friday would extend A-State's winning streak to 10 games.
- Improve Arkansas State to 53-19 all-time versus Louisiana; two wins would give the Red Wolves their 54th victory over the Ragin' Cajuns.
- Move Matt Daniel's record to 1-1 versus Louisiana; two wins: 2-1
- Be better than a loss.

"PARTY LIKE IT'S 1999"

- Arkansas State is currently riding a nine-game winning streak en route to its first 9-1 start since the 1999-00 season. The nine-game winning streak is the program's longest since the 2015-16 team won 18 consecutive contests.

"FEELING HOT HOT HOT"

- Arkansas State has opened Sun Belt Conference play on a strong note, becoming the first team in the league to sweep its opening series, defeating Texas State 54-53 on Jan. 8 and trouncing the Bobcats 70-54 on Jan. 9.
- Then, A-State traveled to ULM for its first road tests of the season and returned to Jonesboro with two more victories, defeating the Warhawks 64-50 on Friday and 59-44 on Saturday.

"CHANGES"

- Arkansas State's lone non-conference road tilt set for Dec. 10 at Arkansas-Pine Bluff was canceled due to COVID-19 concerns within the UAPB program.
- The cancellation isn't the only change to A-State schedule since the season began, as A-State added a Dec. 15 game versus Champion Christian. That means the Red Wolves played a program-record 10 straight home games to open the season and four games in seven days starting Friday versus Williams Baptist.
- After taking on Champion Christian on Dec. 15, the Red Wolves learned three hours prior to tipping off versus Grambling State that the Lady Tigers had COVID-19 concerns, effectively canceling the contest.
- A-State's schedule changes carried over into the new year, as its Sun Belt Conference-opening series versus ULM was postponed due to COVID-19 concerns within the Warhawks program, paving the way for the Red Wolves scheduling a non-conference outing against Central Baptist on Jan. 4.

"WASHINGTON ON YOUR SIDE"

- While that may be a catchy song from "Hamilton," this note is about Arkansas State guard Jireh Washington, who has emerged as one of the league's top defenders this season, ranking second in the league with 3.1 steals per game, which ranks 21st nationally. Washington has also shown to be a strong distributor with over 200 assists in her two seasons. The Memphis native needs 52 dimes to crack the A-State Career Top 10 in assists.
- Washington has scored 10 or more in eight of 10 games this season - six in a row, giving her double-digit scoring in 19 of the last 21 games dating back to last season.

MARTIN NEARING MILESTONE(S), AMONG ACTIVE LEADERS

- Peyton Martin is just 24 points shy of reaching the 1,000-point marker, which would make her the 24th player in program history to do so. She is also 19 rebounds shy of reaching 500. If she reaches both milestones, Martin will be the 16th A-State player to amass 1,000 points and 500 boards.
- Martin also ranks fifth among the top active leaders in career scoring in the Sun Belt:

TOP 5 CAREER SCORERS (ACTIVE)

Rank	Player	School	PTS
1.	Antoinette Lewis	USA	1,414
2.	Savannah Jones	USA	1,381
3.	Pre Stanley	APP	1,348
4.	Lainey Gosnell	APP	1,015
5.	Peyton Martin	A-State	976

A-STATE 1,000 POINT SCORERS

Rank	Player	PTS
20.	Amber Abraham	1,033
21.	Ali Carter	1,030
22.	Khadija Brown-Haywood	1,028
23.	Quintella Jackson	1,025
--	Peyton Martin	976

**-VS-****SERIES HISTORY**

- Arkansas State meets Louisiana for the first series of the season Friday and Saturday.
- A-State is slated to face the Ragin' Cajuns four times in the next six contests, traveling to Lafayette Feb. 5-6.
- A-State owns an all-time 52-19 mark versus Louisiana, 26-7 in Jonesboro.
- Last season, the Red Wolves dropped an 83-43 decision at the Cajundome.
- In his head-coaching career, Matt Daniel is 0-1 versus Louisiana

SERIES RECORD

In Jonesboro:	26-7
In Lafayette:	24-11
Neutral Sites:	2-1
Current Streak:	Louisiana, W1
Longest A-State Win Streak:	21 (1989-90-1/27/00)
Longest Louisiana Win Streak:	4 (2x, MR: 12/31/16-3/1/18)
Largest A-State win:	54 (95-44) Feb. 20, 1997
Largest Louisiana win:	40 (83-43) Feb. 23, 2020

LAST 10 MEETINGS

Date	Year	Score	Result
March 13	2015	63-61	nW
Jan. 9	2016	83-56	hW
Feb. 11	2016	74-62	aW
Dec. 31	2016	72-80	hL
Jan. 26	2017	60-72	aL
Dec. 31	2017	55-77	hL
March 1	2018	53-60	aL
Jan. 3	2019	87-75	hW
March 9	2019	75-73	aW
Feb. 23	2020	43-83	aL

TALE OF THE TAPE (2020-21)

A-State	Stats	Louisiana
75.7	Points Per Game	65.3
53.1	Opp. Points Per Game	65.1
+22.6	Scoring Margin	+0.2
.437	Field Goal %	.403
.344	Opp. Field Goal %	.432
.298	3-point FG %	.318
.224	Opp. 3-point FG %	.313
.657	Free Throw %	.726
44.2	Rebounds Per Game	32.6
+9.6	Rebound Margin	-3.7
16.6	Assists Per Game	8.4
15.2	Turnovers Per Game	15.6
+4.5	Turnover Margin	+1.7
1.1	Assist/Turnover Ratio	0.5
11.6	Steals Per Game	6.1
2.9	Blocks Per Game	1.7

A-STATE VS THE SUN BELT

Appalachian State	7-7	
Coastal Carolina	3-4	
Georgia Southern	9-2	
Georgia State	9-3	
Little Rock	46-24	
Louisiana	52-19	
South Alabama	39-14	
Texas State	10-5	2-0 in 2021
Troy	14-12	
ULM	31-16	2-0 in 2021
UT Arlington	16-10	

STATISTICAL TRENDS

Daniel

	2020-21	Era
At Home	7-1	15-5
On Road	2-0	5-13
Neutral Sites	0-0	0-2
Versus Ranked Opponents	0-0	0-2
When scoring first	5-1	8-7
When scoring second	4-0	12-13
When 3 players score 10+	1-0	4-8
When 4+ players score 10+	4-1	10-4
In November	0-1	2-6
In December	4-0	5-3
In January	5-0	10-3
In February	0-0	2-6
In March	0-0	1-2
Leading at halftime	8-0	15-3
Trailing at halftime	1-1	5-17
Tied at halftime	0-0	0-0
Leading with 5:00 remaining	9-0	17-0
Trailing with 5:00 remaining	0-1	3-20
Tied with 5:00 remaining	0-0	0-0
Shooting higher FG% than opp.	8-0	15-2
Shooting lower FG% than opp.	1-1	5-18
Shooting same FG% as opp.	0-0	0-0
Shooting 50% or better	2-0	3-1
Shooting 40-49%	4-0	10-5
Shooting 30-39%	3-1	4-10
Shooting less than 30%	0-0	1-4
Shooting higher 3PT% than opp.	8-0	14-5
Shooting lower 3PT% than opp.	1-1	6-15
Shooting same 3PT% as opp.	0-0	0-0
Make more 3-pointers than opp.	8-0	12-3
Make fewer 3-pointers than opp.	1-1	7-14
Make same number 3-pointers	0-0	1-2
Shoot higher FT% than opp.	5-1	11-8
Shoot lower FT% than opp.	4-0	9-12
Shoot same FT% as opp.	0-0	0-0
Shoot more FT than opp.	8-0	18-8
Shoot fewer FT than opp.	1-1	1-11
Shoot same number FT	0-0	1-1
Out-rebound opp.	8-0	12-2
Being out-rebounded by opp.	1-1	8-18
Same number of rebounds	0-0	0-0
Record more assists	6-0	10-1
Record fewer assists	3-1	9-19
Record same number of assists	0-0	1-0
Commit fewer turnovers	6-0	15-7
Commit more turnovers	1-1	3-12
Commit same turnovers	2-0	2-1
Scoring 85 points or more	4-0	6-0
Scoring 75-84 points	1-0	3-2
Scoring 65-74 points	1-1	5-6
Scoring 64 points or fewer	3-0	6-12
Bench outscored opp.	8-0	15-5
Bench outscored by opp.	1-1	5-14
Bench points equal	0-0	0-1
More point points than opp.	6-1	15-7
Fewer point points than opp.	3-0	4-13
Points in paint equal	0-0	1-0
More second chance points than opp.	8-1	18-5
Fewer second chance points than opp.	1-0	2-15
Second chance points equal	0-0	0-0
More fast break points than opp.	9-1	15-9
Fewer fast break points than opp.	0-0	4-11
Fast break points equal	0-0	1-0
White uniforms	6-1	14-6
Black uniforms	3-0	6-14
Monday	1-0	2-0
Tuesday	1-0	1-2
Wednesday	1-0	2-1
Thursday	1-0	4-5
Friday	3-1	4-2
Saturday	2-0	6-7
Sunday	0-0	1-0
Games Decided By ...		
0-5 points or OT	1-0	5-2
6-10 points	1-0	4-2
11-15 points	2-0	2-8
16-19 points	1-1	3-2
20+ points	4-0	6-6

BREAKING DOWN THE RED WOLVES

Double-Doubles:	2020-21	Career
Morgan Wallace	-	9
Peyton Martin	-	6
Karolina Szydlowska	1	1
Jireh Washington	-	1
Trinitee Jackson	-	1

Double-Figure Scoring:	2020-21	Career
Peyton Martin	4	51
Jireh Washington	9	44
Morgan Wallace	4	38
Jada Stinson	5	18
Kayla Williams	-	6
Trinitee Jackson	3	6
Mya Love	1	3
Karolina Szydlowska	3	3
Hilani Cantone	1	1
Mattie Hatcher	1	1

20-Plus Point Games:	2020-21	Career
Peyton Martin	1	11
Jireh Washington	1	9
Jada Stinson	2	2
Morgan Wallace	-	2

10+ Rebounds:	2020-21	Career
Morgan Wallace	1	14
Peyton Martin	-	8
Trinitee Jackson	2	3
Jireh Washington	-	1
Karolina Szydlowska	1	1
Seynabou Thiam	1	1

5+ Assists:	2020-21	Career
Jireh Washington	3	24
Jada Stinson	3	7
Morgan Wallace	2	3
Mya Love	1	1
Hilani Cantone	1	1

5+ Steals:	2020-21	Career
Jireh Washington	3	4
Peyton Martin	-	1

How A-State's First Points Were Scored

Layup	5
Free Throw	2
3-Pointer	2
Jumper	1

Consecutive Free Throws Made (active)

5.....Peyton Martin
5.....Kayla Williams
3.....Talia Roldan
2.....Trinitee Jackson
2.....Karolina Szydlowska
1.....Jada Stinson
1.....Mya Love

Career Games Played

86.....Peyton Martin
84.....Morgan Wallace
72 (29 at Wichita State).....Kayla Williams
70.....Jireh Washington
68.....Trinitee Jackson
68 (58 at Memphis).....Jada Stinson
40 (35 at UAB).....Talia Roldan
36.....Mya Love
15.....Hailee Erickson
10.....Karolina Szydlowska
9.....Jordyn Brown
9.....Hilani Cantone
9.....Mattie Hatcher
8.....Seynabou Thiam
4.....Vic Dames

Career Games Started

70.....Morgan Wallace
67.....Jireh Washington
62.....Peyton Martin
37 (30 at Memphis).....Jada Stinson
29 (15 at Wichita State).....Kayla Williams
14.....Mya Love
9.....Trinitee Jackson
5.....Karolina Szydlowska

Consecutive Games Started (Must Have Played)

41.....Morgan Wallace
11.....Jireh Washington
7.....Trinitee Jackson
6.....Mya Love
3.....Peyton Martin

Points Leader

25.....Peyton Martin
19.....Jireh Washington
10.....Morgan Wallace
2.....Kayla Williams
2.....Jada Stinson
2.....Trinitee Jackson
1.....Mya Love

Rebounding Leader

30.....Morgan Wallace
29.....Peyton Martin
7.....Trinitee Jackson
6.....Jireh Washington
1.....Karolina Szydlowska
1.....Seynabou Thiam
1.....Jada Stinson

Assists Leader

42.....Jireh Washington
19.....Morgan Wallace
5.....Jada Stinson
2.....Mya Love
1.....Peyton Martin
1.....Kayla Williams
1.....Hilani Cantone

"MS. JACKSON"

- Trinitee Jackson worked hard over the offseason, and it has paid off, as she has nearly doubled her minutes played per game so far from last season to this season. After averaging just 6.8 minutes in 2019-20, the junior averages 14.8 minutes played and makes the most of it with 7.8 points per game and 5.4 rebounds.

A-STATE IN JANUARY

- Since the start of the 1991 season, Arkansas State has totaled a 148-87 record in the month of January. This season has nine scheduled January matchups after the postponements of the ULM contests slated for Jan. 1-2.
- Under Matt Daniel, A-State is 10-3 in the first month of the calendar year.

ON THIS DATE [JANUARY 22-23]

- Since the 1991-92 season, Arkansas State is 6-1 on January 22 (winning three straight, most recently in 2014-15) while owning a strong 6-3 mark on January 23, most recently dropping an 83-43 decision at Louisiana last season.
- On January 22, 1969, Roy Campanella and Stan Musial were elected to the Baseball Hall of Fame.
- On January 23, 1998, Michael Jordan scored in double figures for the 800th consecutive game in a 100-98 OT win over New Jersey. He went on to add 40 more double-figure scoring games to his NBA record before retiring for the second time in 1998.

STINSON SCORES 20-PIECE [BACK-TO-BACK]

- Jada Stinson made a statement in her two games versus SIUE and Williams Baptist, shooting 73.9 percent (17-23) from the field and 64.3 percent from three (9-14), averaging 22.5 points. The junior transfer tallied 21 points versus Williams Baptist, giving her 20 points in back-to-back games, making her the first A-State player to do so since Peyton Martin in 2018-19.
- Stinson was ON FIRE from the field in A-State's win over SIU Edwardsville on Dec. 2, starting 7 of 7 from the field (5 of 5 from three) en route to a career-high 24 points on 8 of 9 from the field (6 of 6 from three). Her 3-point FG percentage of 85.7 percent is a single-game high for a Sun Belt player this season.

LAST TIME OUT

Arkansas State at ULM														
Official Basketball Box Score - First														
Arkansas St. at ULM														
01/16/21 Fayetteville, Arkansas														
2020-21 Women's Basketball														
Officials: Kyle Galloway, Britton Sherry, Jaclyn Watson														
Game Time: 4:00 PM														
Game Duration: 1:45														
Attendance: 716														
Arkansas St. - 59														
Record: 9-1 (4-0)														
NO.	Name	Min	FG	3P	FT	Rebounds	Fouls	TP	AS	TO	ST	Blocks	pts	pts
23	Trinite Jackson	F 22:17	2-9	0-0	3-6	3 3 6	4 5	7	0	2	0	1	0	10
35	Peyton Martin	F 25:55	2-8	0-0	0-0	4 5 9	1 2	4	0	2	0	0	1	13
1	Jireh Washington	G 38:41	6-13	0-1	5-7	2 4 6	0 4	17	2	3	4	0	0	14
3	Morgan Wallace	G 37:04	3-8	1-3	2-6	3 3 6	4 4	9	4	0	1	0	0	13
4	Mya Love	G 19:53	0-2	0-2	0-0	2 2 4	2 0	0	0	2	0	0	0	14
10	Jada Stinson	32:12	5-16	5-10	0-0	1 1 2	2 0	15	0	2	2	0	1	19
24	Karolina Szydlowska	21:28	3-8	1-3	0-0	1 6 7	1 0	7	3	1	3	1	0	4
2	Hilari Cantone	01:19	0-0	0-0	0-0	0 0 0	0 0	0	1	0	0	0	0	1
12	Mattie Hatcher	01:11	0-0	0-0	0-0	0 0 0	0 0	0	0	0	0	0	0	-3
Team						1 3 4								
Totals			21-63	7-19	10-18	17 27 44	14 15	59	10	13	10	2	2	15
Technical Fouls: NONE														
Arkansas St. - 44														
Record: 2-8 (0-4)														
NO.	Name	Min	FG	3P	FT	Rebounds	Fouls	TP	AS	TO	ST	Blocks	pts	pts
4	Kierra Crockett	F 35:42	3-8	0-0	2-3	3 11 14	2 6	8	1	2	2	1	0	-12
24	Diamond Brooks	C 14:04	2-2	0-0	0-0	1 4 5	2 0	4	1	0	0	0	0	-8
3	Linda van Schalk	G 29:42	3-9	1-6	0-0	1 1 2	4 1	7	0	2	1	1	1	-7
13	Gracen Williams	G 20:37	0-2	0-1	0-0	0 1 1	0 0	0	4	3	0	0	0	-8
25	Kierra Brimley	G 32:53	3-12	1-5	0-0	1 1 2	3 1	7	2	5	0	0	1	-18
11	Whitney Goins	32:23	4-12	2-7	0-0	1 2 3	2 2	10	1	2	2	0	0	-12
10	Maddi Gatte	21:37	1-8	0-3	2-2	1 3 4	0 2	4	2	1	1	0	0	-6
12	Morgan Hill	11:23	2-3	0-0	0-1	3 6	2 4	0	0	0	0	0	0	-1
40	Hannah Edwards	01:39	0-1	0-0	0-0	0 0 0	0 0	0	0	0	0	0	0	-3
Team						1 2 3								
Totals			18-67	4-22	4-6	12 28 40	15 14	44	11	18	6	2	2	-15
Technical Fouls: NONE														
Shooting By Period														
1st FG% 4-17 23.5%														
3PT% 1-4 25.0%														
FT% 5-14 35.7%														
2nd FG% 7-14 50.0%														
3PT% 1-5 20.0%														
FT% 5-6 83.3%														
3rd FG% 6-16 37.5%														
3PT% 3-5 60.0%														
FT% 4-6 66.7%														
4th FG% 4-16 25.0%														
3PT% 2-5 40.0%														
FT% 0-2 0%														
GM FG% 21-63 33.3%														
3PT% 7-19 36.8%														
FT% 10-18 55.6%														
Dead Ball Rebounds: 4-0														
Points from Turnovers: 17														
Paint: 26 24														
Second Chance: 14 9														
Fast Breaks: 5 0														
Bench: 22 18														
Period by Period Scoring														
1st 2nd 3rd 4th TOT														
Arkansas St. 10 20 19 10 59														
ULM 17 9 8 10 44														

Arkansas State 59, ULM 44
January 16, 2021 - Monroe, Louisiana

- Arkansas State overcame a slow start en route to its ninth straight victory, defeating ULM 59-44 to sweep its second straight Sun Belt Conference series, this time on the road.
- Jireh Washington again scored in double figures, leading the way with 17 points and six rebounds. Peyton Martin was the team's top rebounder, grabbing nine boards.
- Jada Stinson provided a strong spark off the bench, drilling five threes for 15 points on the day.
- A-State's win improved the Red Wolves to 9-1 for the first time since 1999-00 and 4-0 in league play for the first time since 2015-16.

LEADS, DEFICITS & BEST RUNS

OPPONENT	LEAD	DEFICIT	BEST RUN
UAPB (L)	4	17	8-0
SIU Edwardsville (W)	16	2	9-0
Williams Baptist (W)	50	3	20-0
Champion Chr. (W)	44	-	25-0
Champion Chr. (W)	51	-	16-0
Central Baptist (W)	46	2	15-0
Texas State (W)	10	5	6-0
Texas State (W)	19	-	11-0
at ULM (W)	18	7	20-0
at ULM (W)	18	9	9-0
Louisiana	-	-	-
Louisiana	-	-	-
at UT Arlington	-	-	-
at UT Arlington	-	-	-
at Louisiana	-	-	-
at Louisiana	-	-	-
Little Rock	-	-	-
at Little Rock	-	-	-
at Texas State	-	-	-
at Texas State	-	-	-
UT Arlington	-	-	-
UT Arlington	-	-	-

DYNAMIC DUO

- The tandem of Jireh Washington and Peyton Martin returns as the second-highest returning scoring pair in the Sun Belt, averaging 25.5 points per game - two points behind South Alabama's Savannah Jones and Antoinette Lewis (27.5).
- This season, Washington and Martin combine for 28 points per game through the Red Wolves' first two outings.

TOP SCORING DUOS (ENTERING 2020-21)

Rank	Duo	School	PPG
1.	Lewis/Jones	USA	27.5
2.	Washington/Martin	A-State	25.5
3.	Doucet/Williams	LA	24.3
4.	Gosnell/Stanley	APP	24.2
5.	Dye/Robinson	Troy	21.5

YOUTHFUL RED WOLVES

- Of the 15 players on Arkansas State's roster, 12 of them have played two or fewer seasons at the Division I level. The Red Wolves are one of 13 teams with 12 or more players with two years or less experience.

TAKE IT TO THE BANK!

- Arkansas State has amassed a 330-113 (.745) overall mark in 33-plus seasons at First National Bank Arena, including 7-1 so far this season.
- The Red Wolves did an impressive job of defending homecourt last season, owning an 8-4 mark in the friendly confines. Three of those four losses have come to teams with 18 or more wins (UT Arlington, Troy and SEMO).

UNIQUE SCHEDULE

- We all know 2020 is not a "normal" year, and that carried over into the schedule. This season, due to the late start date, teams are allowed 25 total regular-season games.
- The Red Wolves will face a different conference schedule than in years' past, taking on only teams from the Sun Belt's West Division - Little Rock (2 games), Louisiana (4), Texas State (4), ULM (4) and UT Arlington (4).

"STEAL MY SUNSHINE"

- Arkansas State has swiped 110 steals in its nine straight wins, 116 total in 10 contests. The Red Wolves lead the Sun Belt (1/21) in steals per game (11.6), which ranks 16th nationally.
- Through 10 games, A-State has notched a steal rate of 12.4 percent (steal rate=Pct. of opp. offensive plays where the ball was stolen). Washington leads in the league with 31 steals and 3.1 steals per game, which ranks 24th in Division I.
- In 2019-20, the Red Wolves swiped **10 or more steals in 17 games**. A-State tallied **13 or more steals eight times** last season.

"TAKE IT AWAY"

- Arkansas State forced double-digit turnovers in all but two games in 2019-20, including **at least 15 takeaways 19 times (nine games with 20 or more)**. This season, A-State has forced 16 or more turnovers in all 10 games, including 20 or more in five games.
- The Red Wolves rank fourth in the Sun Belt with 19.70 turnovers forced per game with a league-leading turnover margin of +4.50.

NATURAL STATE SHOWDOWNS

- Arkansas State likes to face in-state foes when it can, with this season's schedule featuring six contests against Arkansas-based opponents (2 vs UAPB, 2 vs Little Rock, vs Williams Baptist [Walnut Ridge] and 2 vs Champion Christian [Hot Springs]). Matchups against Williams Baptist and Champion Christian are the first regular-season tilts for A-State in program history.
- In the summer, A-State and Arkansas announced that the two teams will meet for a home-and-home series beginning in 2021 in Jonesboro - the first meeting since A-State's win in the 2005 WNIT. The Red Wolves are slated to make the return trip to Fayetteville in 2022.
- A breakdown of all-time record versus foes from the state of Arkansas is below:

Opponent	All-time Record	Opponent	All-time Record
Arkansas	3-5	Harding	1-0
Arkansas Baptist	1-0	Henderson State	17-3
Arkansas-Brokerage	1-0	Little Rock	46-24
Arkansas-Monticello	8-11	Lyon College	17-3
Arkansas-Pine Bluff	22-6	Ouachita Baptist	12-3
Arkansas State-Beebe	1-2	Philander Smith	4-0
Arkansas Tech	8-11	Southern Arkansas	7-9
Central Arkansas	12-6	Williams Baptist	1-0
Central Baptist	2-0	OVERALL 165-83	
Champion Christian	2-0		

NATIONAL POLLS

AP Top 25 (Jan. 18)

RK	TEAM	W-L	PTS	PREV
1	Louisville (20)	12-0	710	2
2	NC State (5)	10-0	680	3
3	UConn (1)	7-0	659	4
4	South Carolina (2)	10-1	650	5
5	Stanford (1)	11-1	632	1
6	UCLA	8-2	632	8
7	Maryland	11-1	533	9
8	Texas A&M	13-1	515	7
9	Baylor	8-2	499	6
10	Arizona	10-2	474	11
11	Michigan	10-0	443	13
12	Kentucky	10-3	420	12
13	Oregon	9-3	378	10
14	South Florida	10-1	310	16
15	Arkansas	11-5	266	17
16	Indiana	8-3	226	18
17	Ohio State	7-1	218	15
18	DePaul	8-3	217	19
19	Mississippi State	8-4	198	14
20	Gonzaga	12-2	162	20
21	Northwestern	7-2	115	22
22	Georgia	12-1	113	RV
23	Syracuse	6-1	111	24
24	Iowa State	9-4	65	RV
25	Tennessee	9-2	61	23

Others receiving votes: South Dakota State 52; Texas 49; Missouri St. 43; West Virginia 34; Washington St. 14; Alabama 10; Nebraska 9; Arizona State 6; Rice 6; IUPUI 2.

USA Today Coaches Poll (Jan. 19)

RK	TEAM	W-L	PTS	PREV
1	Louisville (30)	12-0	798	2
2	N.C. State (1)	10-0	749	3
3	South Carolina	11-1	721	4
4	Stanford (1)	11-1	710	1
5	UConn	7-0	697	5
6	UCLA	8-2	596	8
7	Maryland	11-1	595	9
8	Texas A&M	13-1	570	7
9	Baylor	8-2	541	6
10	Arizona	10-2	499	13
11	Michigan	10-0	477	12
12	Kentucky	10-3	474	11
13	Oregon	9-3	405	10
14	South Florida	10-1	306	17
15	Indiana	8-3	301	18
16	Ohio State	7-1	291	15
17	Arkansas	11-5	286	16
18	Gonzaga	12-2	227	19
19	Mississippi State	8-4	211	14
20	Syracuse	6-1	195	21
21	DePaul	8-3	166	22
22	Northwestern	7-2	145	23
23	Georgia	12-1	109	27
24	Texas	9-3	82	20
25	Missouri State	6-2	69	25

Others receiving votes: Tennessee (9-2) 46; South Dakota State (11-2) 41; Iowa (9-3) 24; West Virginia (10-2) 21; Iowa State (9-4) 9; Virginia Tech (7-5) 7; Michigan State (8-2) 6; Florida Gulf Coast (9-2) 6; Colorado (6-6) 5; Washington State (7-3) 4; Nebraska (7-4) 4; IUPUI (8-1) 2; Delaware (9-1) 2; Dayton (6-1) 2; Arizona State (7-3) 1.

"WE'RE THE THREE BEST FRIENDS THAT ANYBODY COULD HAVE"

- Last season, Arkansas State had three or more players record double-digit scoring in 20 of its 30 games. This year, A-State has done so in six of 10 games.
- Since the 2012-13 season, Arkansas State is 100-50 (.667) when three or more players score in double figures.
- "...and we'll never ever ever ever ever leave each other." (If you get the reference, you get a gold star.)

#TEAM1STWINS

- This season through 10 games, Arkansas State ranks second in the Sun Belt in assists and first in assists per game (fourth nationally). In the Red Wolves' win over SIU Edwardsville, the team posted an assist percentage of 69.0 percent (20 assists to 29 made baskets). A-State's assist percentage increased to 70.3 percent (26-37) in its win over Williams Baptist. The Red Wolves also registered a 68.6 percent mark versus Central Baptist.
- The Red Wolves are also 55th in the NCAA and first in the Sun Belt with a 1.09 mark.
- In 10 games, A-State has compiled an assist percentage of 59.5 percent (166 assists to 279 field goals).

"FAMILY TRADITION"

- A-State freshman guard **Mattie Hatcher** is one of several in her family to play college athletics and is the second in her family to compete at Arkansas State. Her brother, Layne, is a quarterback on the A-State football team and was a standout in his rookie season.
- An accomplished equestrian who competed at the Junior Olympic Games, Hatcher comes to A-State with four years of eligibility remaining after spending her freshman year of college as a student at Samford University, training with her horses. She was also a standout on the soccer pitch at Pulaski Academy, owning the career goals scored record for the state of Arkansas.
- Hatcher's father, Greg, was a three-sport athlete at Alma College, lettering in soccer, baseball and wrestling and was a 2017 inductee into the National Wrestling Hall of Fame. Her sisters Kelsey (Arkansas women's basketball), Haley (Ouachita Baptist soccer) and Larkin (Harding soccer) also competed collegiately.

MELTING POT

- Arkansas State's 2020-21 roster boasts players from eight different states and two different countries outside of the United States.
- Karolina Szydłowska (Poland) and Seynabou Thiam (Senegal) are the first players from their respective countries to compete for A-State in women's basketball.

MO BRINGS DOWN THE BOARDS, PROVIDES STEADY PRESENCE

- Senior Morgan Wallace enters the weekend series needing just three rebounds to reach 500 for her career and 268 points to reach 1,000. Last season, Wallace led A-State in steals and rebounding, including a team-high five double-doubles and nine games with double-digit rebounds.
- Wallace has also been a steady presence on the floor, leading the team in minutes played last season (34.4/game) and this season (31.6). She has also started in 41 consecutive games in which she has played.

ROAD TO 1,000 POINTS

Player	Year	Points	Needs
Peyton Martin	Senior	976	24
Jireh Washington	Junior	826	174
Morgan Wallace	Senior	732	268

ROAD TO 500 REBOUNDS

Player	Year	Rebounds	Needs
Morgan Wallace	Senior	497	3
Peyton Martin	Senior	481	19

TOP 10 ASSISTS PER GAME

RK	PLAYER NAME	NO.	YEARS
1.	Kathy Dyess	5.0	1997
2.	Aundrea Gamble	4.7	2014-16
	Beth Penn	4.7	1984-85
4.	Rudy Sims	4.4	2004-07
5.	Crystal Tausan	4.2	1993-96
6.	Ashley Olvera	3.7	2012-13
7.	Jireh Washington	3.4	2018-pres.
	Casie Lowman	3.4	2002-03
9.	Sonja Tate	3.1	1990-93
10.	Keeshia Evans	2.9	1998-01
11.	Julie Hagood	2.9	1997-00

"THREE IS A MAGIC NUMBER"

- Arkansas State was active beyond the three-point line in Matt Daniel's first season, attempting a school-record 649 treys. The Red Wolves connected on 186 of those - the most by an A-State team since the 2015-16 season (217).
- In A-State's season opener against UAPB, the Red Wolves fired 30 from beyond the arc. Since the start of the Daniel era last season, Arkansas State owns eight of the top 11 single-game three-point attempt marks in school history.
- Jada Stinson caught fire from deep in A-State's win over SIUE (12/2), making her first five three-point attempts. She finished with a career-high 24 points on 8 of 9 shooting (6-7 from three). Her 85.7 percent clip is a Sun Belt single-game high so far this season.
- Stinson currently ranks second in the Sun Belt with 2.30 three-point field goals per game and is fifth with a 35.4 percentage.

HAPPY BIRTHDAY TO YOU

- Seven individuals within the Arkansas State women's basketball program have birthdays either on game day or during a game week in the regular season. A breakdown of basketball season birthdays is below:

Name	Birthday
McGhee Mann (DOBO)	Nov. 28
Talia Roldan	Dec. 16*
Sha'hada Artberry (S&C)	Dec. 17*
Hailee Erickson	Feb. 1
Matt Daniel	Feb. 9
Seynabou Thiam	Feb. 15
Peyton Martin	March 7#

* - occurs on game day

- occurs during SBC Tournament

"NOTHING ELSE MATTERS"

- Sure, that is a legendary Metallica song, but this section of the game notes is reserved for random, possibly useless, information. Occasionally it will be a space in which the author of these game notes will drop some knowledge. Feel free to share what you've learned in your broadcast!
- Arkansas State has scored in 1,331 consecutive games.
- The Red Wolves are undefeated when outscoring their opponent.
- In presidential election years, Arkansas State is 176-141 overall. When a Democrat wins the election, A-State is 88-53 (.624) while going 88-88 (.500) when a Republican has won. Additionally, when the winner wins Arkansas, A-State is 145-112. When the winner loses the Natural State (2008 and 2012), A-State is 31-29. Since Jimmy Carter was elected in 1976, the winner has only lost Arkansas twice (2008 and 2012).
- The hashtag symbol is technically called an "octothorpe." According to Merriam-Webster dictionary, the "octo-" prefix refers to the eight points on the popular symbol, but the "thorpe" remains a mystery. One theory claims that it comes from the Old English word for "village," based on the idea that the symbol looks like a village surrounded by eight fields!

A-STATE IN OVERTIME**OVERALL RECORD: 25-12**

Date	Opponent	OT	W/L	Score
1/9/20	Georgia State*	OT	W	70-68
11/17/18	at UT Martin	OT	L	91-97
2/4/17	App State*	OT	L	72-81
1/8/15	at UT Arlington*	OT	W	80-77
2/5/14	Western Kentucky*	OT	W	78-74
1/7/12	North Texas*	OT	W	70-64
2/19/11	at Troy	OT	W	83-69
1/22/11	at North Texas*	OT	W	62-59
1/2/11	Western Kentucky*	OT	L	74-75
11/26/10	at SMU	2OT	L	80-86
11/24/10	at UT Arlington	OT	W	59-55
2/10/10	at Western Kentucky*	OT	L	78-83
12/15/09	UT Arlington	OT	W	67-60
12/5/09	at Northern Arizona	OT	W	65-62
11/16/09	at Kansas State	OT	W	80-79
12/2/08	at Indiana State	OT	W	76-68
1/23/08	FIU*	OT	W	72-64
12/16/06	at Louisiana*	OT	W	65-58
1/8/05	at FIU*	OT	W	85-74
3/6/04	New Mexico State#	2OT	L	65-71
1/29/04	at Little Rock*	OT	W	86-79
1/30/03	New Orleans*	OT	W	69-63
1/6/03	Belmont	OT	W	63-62
2/28/02	New Orleans#	OT	L	47-51
12/7/01	Ole Miss	4OT	W	86-81
11/24/00	at McNeese State	OT	W	79-74
1990	New Orleans*	OT	W	67-61
1990	at Louisiana*	OT	L	69-76
1990	at New Orleans*	OT	L	67-68
1983-84	McNeese State	OT	W	70-67
1983-84	at SEMO	OT	L	74-82
1983-84	at Arkansas Tech	OT	W	82-79
1982-83	Murray State	OT	L	81-87
1978-79	Ouachita Baptist	OT	W	70-68
1978-79	at Central Arkansas	OT	W	83-76
1977-78	Union (Tenn.)	OT	L	83-86
1976-77	UAPB	OT	W	67-66

MID-MAJOR TOP 25 [JAN. 19]

RK	TEAM	W-L	PTS	PREV
1	Gonzaga (25)	11-2	765	1
2	South Dakota St. (2)	11-2	728	2
3	Missouri State (1)	7-2	714	3
4	Fla.-Gulf Coast (1)	9-2	673	4
5	South Dakota (1)	9-2	649	5
6	IUPUI (1)	8-1	617	6
7	Milwaukee	13-1	544	10
8	BYU	7-1	541	9
9	Stephen F. Austin	12-2	485	12
10	Buffalo	7-3	439	14
11	Maine	11-1	414	13
12	James Madison	6-4	398	8
13	Cal Baptist	12-0	377	16
14	Idaho State	11-1	345	19
15	Ohio	6-5	320	11
16	Central Michigan	7-4	291	7
17	Belmont	4-2	284	17
18	Drake	8-6	238	20
19	Drexel	6-2	205	15
20	Bucknell	6-0	177	22
21	UT Martin	5-3	146	24
22	North Dakota State	10-2	142	23
23	UC Davis	1-0	124	18
24	Bowling Green	9-3	66	21
25	Liberty	10-3	53	RV

Others receiving votes: Delaware 45, Bradley 44, Marist 29, Kent State 28, Northern Illinois 28, Northern Iowa 25, Fairfield 23, Abilene Christian 21, **Little Rock 21**, Portland 18, Long Beach State 12, Stony Brook 12, Wright State 11, Santa Clara 9, Mercer 6, **Troy 6**, **Arkansas State 1**, Idaho 1, **UT Arlington 1**.

2020-21 SUPERLATIVES

2020-21 MARGIN OF VICTORY/DEFEAT																
Margin	1	2	3	4	5	6	7	8	9	10	11-14	15-19	20-24	25-29	30-34	35+
Victory	1	-	-	-	-	-	1	-	-	-	2	1	-	-	-	4
Defeat	-	-	-	-	-	-	-	-	-	-	-	1	-	-	-	-

Most First Quarter Points			Most Third Quarter Points		
A-State	29	vs Texas State (1/9/20)	A-State	26	vs Williams Bapt. (12/11/20)
Opponent	19	Ark.-Pine Bluff (11/27/20)	Opponent	24	Ark.-Pine Bluff (11/27/20)

Fewest First Quarter Points			Fewest Third Quarter Points		
A-State	10	at ULM (1/16/21)	A-State	6	vs Texas State (1/9/21)
Opponent	4	Champion Chri. (12/17/20)	Opponent	5	Champion Chr. (12/17/20)

Most Second Quarter Points			Most Fourth Quarter Points		
A-State	29	vs Champion Chr. (12/15/20)	A-State	26	vs Williams Bapt. (12/11/20)
Opponent	21	Ark.-Pine Bluff (11/27/20)	Opponent	26	SIUE (12/2/20)

Fewest Second Quarter Points			Fewest Fourth Quarter Points		
A-State	6	at ULM (1/15/21)	A-State	10	at ULM (1/16/21)
Opponent	9	ULM (1/16/21)	Opponent	6	Williams Bapt. (12/11/20)

Largest Halftime Lead			Largest Margin of Victory		
A-State	29	vs Champion Chr. (12/15/20)	A-State	50	2x: last vs Champion Chr. (12/17/20)
Opponent	6	ULM (1/15/21)	Opponent	17	Ark.-Pine Bluff (11/27/20)

SPECIALTY STATS

OPPONENT	PAINT	OFF TURNOVER	2ND CHANCE	FAST BREAK	BENCH POINTS
Arkansas-Pine Bluff	36/24	21/18	8/4	14/9	13/21
SIU Edwardsville	40/48	21/12	14/6	20/18	32/26
Williams Baptist	58/22	25/2	14/2	21/7	43/20
Champion Christian	56/12	21/8	21/2	16/2	65/25
Champion Christian	50/16	35/2	23/6	15/4	41/11
ULM* (PPD)	-/-	-/-	-/-	-/-	-/-
ULM* (PPD)	-/-	-/-	-/-	-/-	-/-
Central Baptist	48/16	19/2	18/9	13/2	43/0
Texas State*	22/28	9/13	4/6	9/4	11/8
Texas State*	38/24	19/13	18/12	10/4	23/17
at ULM*	18/24	23/16	12/0	8/5	13/20
at ULM*	26/24	17/7	14/9	5/0	22/18
Louisiana*	-/-	-/-	-/-	-/-	-/-
Louisiana*	-/-	-/-	-/-	-/-	-/-
at UT Arlington*	-/-	-/-	-/-	-/-	-/-
at UT Arlington*	-/-	-/-	-/-	-/-	-/-
at Louisiana*	-/-	-/-	-/-	-/-	-/-
at Louisiana*	-/-	-/-	-/-	-/-	-/-
Little Rock*	-/-	-/-	-/-	-/-	-/-
at Little Rock*	-/-	-/-	-/-	-/-	-/-
at Texas State*	-/-	-/-	-/-	-/-	-/-
at Texas State*	-/-	-/-	-/-	-/-	-/-
UT Arlington*	-/-	-/-	-/-	-/-	-/-
UT Arlington*	-/-	-/-	-/-	-/-	-/-
TOTALS	+118	+94	+78	+62	+117

A-STATE IN THE RANKINGS

TEAM [AS OF 1/21]			
NCAA – TOP 150 OR SBC – TOP 5			
Category	NCAA	SBC	Stat
Ast/TO Ratio	55	1	1.09
Assists	76	2	166
Assists/Game	37	3	16.6
Fewest Fouls	143	6	167
Fewest Turnovers	139	4	152
Field Goal Pct.	67	1	43.7
FG Pct. Defense	24	2	34.4
Free Throw Attempts	112	5	204
Free Throws Made	126	7	134
Personal Fouls/Game	126	2	16.7
Rebound Margin	25	1	+9.6
Rebounds	107	5	442
Rebounds/Game	27	3	44.20
Scoring Defense	15	1	53.1
Scoring Margin	13	1	+22.6
Scoring Offense	52	3	75.7
Steals	34	3	116
Steals/Game	16	1	11.6
3PT FG% Defense	4	1	22.4
3PT FG Attempted	114	4	218
3PT FG Made	131	5	65
3PT FG Made/Game	125	5	6.5
Turnover Margin	36	1	+4.50
Turnovers Forced	50	4	19.70
Turnovers/Game	110	1	15.2

INDIVIDUAL

NCAA – TOP 150 OR SBC – TOP 5			
	NCAA	SBC	Stat
Assists/Turnover Ratio			
Morgan Wallace	105	4	1.79
Assists Per Game			
Morgan Wallace	159	5	3.8
Steals			
Jireh Washington	24	1	31
Steals Per Game			
Jireh Washington	19	2	3.10
Three-Point Field Goals Attempted			
Jada Stinson	110	4	65
Three-Point Field Goals Made			
Jada Stinson	112	3	23
Three-Point Field Goals Made Per Game			
Jada Stinson	91	2	2.30
Three-Point Field Goal Percentage			
Jada Stinson	144	5	35.4%

WINS VS. LOSSES

Result	FG%	Opp. FG%	3PT FG%	Opp. 3PT FG%	FT%	RPG	APG	TOPG	BPG	SPG	PPG	Opp. PPG
Wins	.445	.332	.321	.203	.647	44.9	17.1	15.0	2.9	12.2	76.6	49.6
Losses	.364	.444	.161	.385	.750	38.0	12.0	17.0	3.0	6.0	68.0	85.0

POINTS-REBOUNDS-ASSISTS

OPPONENT	1 - Washington	2 - Cantone	3 - Wallace	4 - Love	5 - Brown	10 - Stinson	11 - Dames	12 - Hatcher	13 - Roldan	14 - Erickson	21 - Thiam	23 - Jackson	24 - Szydlowska	25 - Williams	35 - Martin
Arkansas-Pine Bluff	12-1-1	0-0-0	15-8-4	2-1-0	0-0-0	8-5-6	CD	3-1-0	2-3-0	CD	0-1-0	10-6-1	10-7-0	0-0-0	6-1-0
SIU Edwardsville	10-6-6	0-0-0	9-4-8	4-1-5	0-0-0	24-4-0	CD	CD	0-0-0	CD	CD	5-4-0	0-2-1	0-0-0	28-8-0
Williams Baptist	10-4-5	2-0-1	10-4-5	2-6-1	4-3-1	21-4-3	2-0-0	9-3-4	3-8-0	0-1-1	4-4-0	12-2-0	8-4-1	5-1-2	4-9-2
Champion Christian	4-2-2	10-1-5	2-2-3	6-5-1	9-5-2	12-0-1	5-2-1	4-1-0	8-5-2	3-0-0	9-18-0	4-2-2	6-8-0	7-6-2	4-1-0
Champion Christian	12-4-1	6-1-0	6-2-4	13-3-3	2-2-1	3-8-6	0-0-0	3-1-1	4-2-0	1-1-1	4-6-1	13-7-0	4-2-1	7-4-0	10-5-3
ULM (PPD)	--	--	--	--	--	--	--	--	--	--	--	--	--	--	--
ULM (PPD)	--	--	--	--	--	--	--	--	--	--	--	--	--	--	--
Central Baptist	13-7-6	4-1-4	INJ	5-7-2	0-6-2	8-5-6	3-0-0	11-0-0	INJ	0-0-1	2-3-0	6-4-0	10-11-0	4-3-0	19-6-0
Texas State	11-1-2	INJ	12-9-3	6-1-0	0-0-0	7-3-3	CD	3-1-1	INJ	CD	0-0-0	7-10-0	4-2-0	0-4-0	4-5-0
Texas State	11-7-2	0-0-1	8-10-3	2-4-3	0-0-0	12-3-2	CD	0-0-1	INJ	CD	0-0-0	8-3-0	11-3-1	0-0-0	18-8-1
at ULM	24-7-2	0-0-0	11-3-0	4-0-1	0-0-0	9-3-4	CD	0-0-0	INJ	CD	0-0-0	6-10-1	4-2-0	0-0-0	6-3-0
at ULM	17-6-2	0-0-1	9-6-4	0-4-0	CD	15-2-0	CD	0-0-0	INJ	CD	CD	7-6-0	7-7-3	CD	4-9-0
Louisiana	--	--	--	--	--	--	--	--	--	--	--	--	--	--	--
Louisiana	--	--	--	--	--	--	--	--	--	--	--	--	--	--	--
at UT Arlington	--	--	--	--	--	--	--	--	--	--	--	--	--	--	--
at UT Arlington	--	--	--	--	--	--	--	--	--	--	--	--	--	--	--
at Louisiana	--	--	--	--	--	--	--	--	--	--	--	--	--	--	--
at Louisiana	--	--	--	--	--	--	--	--	--	--	--	--	--	--	--
Little Rock	--	--	--	--	--	--	--	--	--	--	--	--	--	--	--
at Little Rock	--	--	--	--	--	--	--	--	--	--	--	--	--	--	--
at Texas State	--	--	--	--	--	--	--	--	--	--	--	--	--	--	--
at Texas State	--	--	--	--	--	--	--	--	--	--	--	--	--	--	--
UT Arlington	--	--	--	--	--	--	--	--	--	--	--	--	--	--	--
UT Arlington	--	--	--	--	--	--	--	--	--	--	--	--	--	--	--

Bold - Start | CD - Coach's Decision | INJ - Injury

FREE THROW PROFICIENCY

AND-ONE (free throw to complete 3 or 4 point play)

#	Player	FT-FTA	PCT
1	Jireh Washington	2-3	.667
2	Hilani Cantone	-	-
3	Morgan Wallace	1-2	.500
4	Mya Love	-	-
5	Jordyn Brown	-	-
10	Jada Stinson	0-1	.000
11	Victoria Dames	-	-
12	Mattie Hatcher	-	-
13	Talia Roldan	-	-
14	Hailee Erickson	-	-
21	Seynabou Thiam	-	-
23	Trinitee Jackson	4-8	.500
24	Karolina Szydlowska	-	-
25	Kayla Williams	-	-
35	Peyton Martin	2-3	.667
	Team	9-17	.529

CRUNCH TIME (final 2 minutes within 10 points and in overtime)

#	Player	FT-FTA	PCT
1	Jireh Washington	0-2	.000
2	Hilani Cantone	-	-
3	Morgan Wallace	2-2	1.000
4	Mya Love	-	-
5	Jordyn Brown	-	-
10	Jada Stinson	-	-
11	Victoria Dames	-	-
12	Mattie Hatcher	-	-
13	Talia Roldan	-	-
14	Hailee Erickson	-	-
21	Seynabou Thiam	-	-
23	Trinitee Jackson	-	-
24	Karolina Szydlowska	-	-
25	Kayla Williams	-	-
35	Peyton Martin	-	-
	Team	2-4	.500

A-STATE GAME-BY-GAME STARTERS

OPPONENT	G	G	G	G/F	F/C	RECORD
UAPB (L)	Washington	Stinson	Wallace	Szydlowska	Jackson	0-1
SIU Edwardsville (W)	Washington	Stinson	Wallace	Szydlowska	Jackson	1-1
Williams Baptist (W)	Washington	Stinson	Wallace	Szydlowska	Martin	2-1
Champion Chr. (W)	Washington	Stinson	Wallace	Szydlowska	Jackson	3-1
Champion Chr. (W)	Washington	Stinson	Wallace	Love	Jackson	4-1
ULM*	POSTPONED					
ULM*	POSTPONED					
Central Baptist (W)	Washington	Stinson	Love	Szydlowska	Jackson	5-1
Texas State* (W)	Washington	Stinson	Wallace	Love	Jackson	6-1
Texas State* (W)	Washington	Wallace	Love	Jackson	Martin	7-1
at ULM* (W)	Washington	Wallace	Love	Jackson	Martin	8-1
at ULM* (W)	Washington	Wallace	Love	Jackson	Martin	9-1
Louisiana*	-	-	-	-	-	-
Louisiana*	-	-	-	-	-	-
at UT Arlington*	-	-	-	-	-	-
at UT Arlington*	-	-	-	-	-	-
at Louisiana*	-	-	-	-	-	-
at Louisiana*	-	-	-	-	-	-
Little Rock*	-	-	-	-	-	-
at Little Rock*	-	-	-	-	-	-
at Texas State*	-	-	-	-	-	-
at Texas State*	-	-	-	-	-	-
UT Arlington*	-	-	-	-	-	-
UT Arlington*	-	-	-	-	-	-

A-STATE RECORD BY STARTING LINEUP

Washington, Wallace, Love, Jackson, Martin	3-0
Washington, Wallace, Stinson, Jackson, Szydlowska	2-1
Washington, Wallace, Love, Stinson, Jackson	2-0
Washington, Wallace, Stinson, Szydlowska, Martin	1-0
Washington, Love, Stinson, Jackson, Szydlowska	1-0

PLAYER CAREER STATS VS. LOUISIANA

Name	GP-GS	Min-Avg	----Total----		----3-Point----		---F-Throw---		----Rebounds----								Pts	Avg
			FG-FGA	Pct	FG-FGA	Pct	FT-FTA	Pct	Off-Def-Tot	Avg	PF	FO	Ast	TO	Blk	Stl		
Jireh Washington	2-2	62-31.0	11-18	.611	1-11	.000	8-12	.667	1-6-7	3.5	5	0	6	5	0	0	31	15.5
Morgan Wallace	4-2	107-26.8	10-16	.625	1-3	.333	9-16	.563	3-16-19	4.8	4	0	5	6	1	5	30	7.5
Trinitee Jackson	2-0	26-13.0	3-10	.300	0-0	.000	4-8	.500	1-5-6	3.0	4	0	0	3	1	1	10	5.0
Peyton Martin	2-2	39-19.5	2-9	.222	0-0	.000	0-0	.000	0-6-6	3.0	5	0	1	6	1	2	4	2.0
Mya Love	1-0	26-26.0	1-4	.250	0-1	.000	0-0	.000	1-1-2	2.0	3	0	1	4	0	1	2	2.0

2020-21 PRESEASON SBC COACHES POLL

Order of Finish

1. Troy (9) - 140 pts
2. UT Arlington (1) - 115
3. South Alabama (1) - 112
4. Louisiana (1) - 111
5. Little Rock - 99
6. Coastal Carolina - 83
7. Arkansas State - 78
8. Appalachian State - 56
9. Georgia State - 44
10. Georgia Southern - 41
11. Texas State - 37
12. ULM - 20

Player of the Year

Antoinette Lewis, South Alabama

Preseason All-SBC

First Team

Antoinette Lewis, South Alabama
Ty'Reona Doucet, Louisiana
Alexus Dye, Troy
Aja Blount, Coastal Carolina
Savannah Jones, South Alabama

Second Team

Teal Battle, Little Rock
Pre Stanley, App State
Jasmine Robinson, Troy
Da'Nasia Hood, Texas State
Taylor Hosendove, Georgia State

Third Team

Jireh Washington, Arkansas State
Claire Chastain, UTA
Brandi Williams, Louisiana
Felmas Koranga, Troy
Katie Ferrell, UTA

SBC STANDINGS [AS OF JAN. 21]

Team	Conference		Overall	
	Record	PCT	Record	PCT
EAST DIVISION				
Georgia State	2-0	1.000	6-3	.667
Troy	3-1	.750	7-4	.636
South Alabama	4-2	.667	7-5	.583
Appalachian State	3-3	.500	6-6	.500
Georgia Southern	2-4	.333	6-7	.462
Coastal Carolina	0-4	.000	3-5	.375
WEST DIVISION				
Arkansas State	4-0	1.000	9-1	.900
UT Arlington	3-1	.750	5-3	.625
Little Rock	1-1	.500	5-4	.556
Louisiana	1-1	.500	2-5	.286
Texas State	1-3	.250	4-5	.444
ULM	0-4	.000	2-8	.200



THIS WEEK AROUND THE LEAGUE

Fri., Jan. 22	4 p.m.	ULM at Texas State
	5 p.m.	Appalachian State at Georgia State South Alabama at Georgia Southern
	6 p.m.	Louisiana at Arkansas State Coastal Carolina at Troy
	6:30 p.m.	UT Arlington at Little Rock
Sat., Jan. 23	1 p.m.	Appalachian State at Georgia State
	3 p.m.	South Alabama at Georgia Southern
	4 p.m.	Louisiana at Arkansas State Coastal Carolina at Troy
		ULM at Texas State
Mon., Jan. 25	5:30 p.m.	Louisiana at Little Rock

PLAYERS OF THE WEEK

Dec. 1	Pre Stanley (Appalachian State)
Dec. 8	Mayra Caicedo (Little Rock)
Dec. 15	Tiyah Johnson (Troy)
Dec. 22	Alexus Dye (Troy)
Dec. 29	A'Tyanna Gaulden (Georgia So.)
Jan. 4	Shondell Vickers (Georgia So.)
Jan. 11	Antoinette Lewis (South Ala.)
Jan. 18	Alexus Dye (Troy)

THE LAST TIME A TEAM

SCORED 100 POINTS

A-State 101 at Troy | 12-30-15
Opponent 111 by Baylor | 12-18-19

SCORED 90 POINTS

A-State **93 vs Champion Christian | 12-15-20**
Opponent 91 by Troy | 3-7-20

SCORED FEWER THAN 60 POINTS

A-State **59 at ULM | 1-16-21**
Opponent **50 by ULM | 1-15-21**

SCORED FEWER THAN 50 POINTS

A-State 43 at Louisiana | 1-23-20
Opponent **44 by ULM | 1-16-21**

WON BY 30 POINTS

A-State **46 vs Central Baptist | 1-4-21 (85-39)**
Opponent 40 by Louisiana | 1-23-20

SHOT 60% FROM THE FLOOR

A-State 63.2% vs UT Martin | 1-12-12
Opponent 60.3 by UT Arlington | 1-17-19

SHOT 50% FROM THE FLOOR

A-State **50.7% vs Williams Baptist | 12-11-20**
Opponent 53.4% by South Alabama | 2-20-20

SHOT LESS THAN 35% FROM THE FLOOR

A-State **33.3% at ULM | 1-16-21**
Opponent **31.6% by ULM | 1-16-21**

SHOT 100% FROM 3-POINT RANGE (MIN. 3 ATTEMPTS)

A-State 6-for-6 vs Little Rock | 1-29-15
Opponent

SHOT 60% FROM 3-POINT RANGE

A-State 75% vs UCA | 12-21-14
Opponent 68.2% by Pittsburgh | 11-25-17

MADE 10 3-POINT FIELD GOALS

A-State 10 vs. South Alabama | 3-5-20
Opponent **10 by Arkansas-Pine Bluff | 11-27-20**

SHOT BETTER THAN 80% FROM THE FT LINE (MIN. 5 MADE)

A-State **85.7% at ULM | 1-15-21 (24-28)**
Opponent **100.0% by Champion Christian | 12-15-20 (6-6)**

SHOT LESS THAN 50% FROM THE FT LINE

A-State 46.4% at Memphis | 12-14-19
Opponent **16.7% by Central Baptist | 1-4-21**

HAD 60 REBOUNDS

A-State **61 vs Champion Christian | 12-15-20**
Opponent 59 by Troy | 3-7-20

HAD 50 REBOUNDS

A-State **56 vs Central Baptist | 1-4-21**
Opponent 59 by Troy | 3-7-20

HAD 20 OFFENSIVE REBOUNDS

A-State **21 vs Champion Christian | 12-17-20**
Opponent 24 by Troy | 3-7-20

HAD 40 ASSISTS

A-State 46 vs Lamar | 1997-98 season
Opponent

HAD 30 ASSISTS

A-State
Opponent 37 by Baylor | 12-18-19

HAD 20 ASSISTS

A-State **24 vs Central Baptist | 1-4-21**
Opponent 23 by Troy | 2-22-20

HAD 20 TURNOVERS

A-State **20 vs Texas State | 1-8-21**
Opponent **25 by ULM | 1-15-21**

HAD LESS THAN 10 TURNOVERS

A-State **4 vs Central Baptist | 1-4-21**
Opponent 8 by Baylor | 12-18-19

HAD LESS THAN 10 FOULS

A-State 9 vs. Coastal Carolina | 1-25-20
Opponent **9 by Central Baptist | 1-4-21**

HAD 10+ STEALS

A-State **10 at ULM | 1-16-21**
Opponent **10 by SIU Edwardsville | 12-2-20**

HAD 20+ STEALS

A-State 20 vs North Texas | 1-2-10
Opponent 20 by Troy | 2-8-18

HAD 10 BLOCKED SHOTS

A-State 10 at Western Kentucky | 2-10-10
Opponent 11 by Baylor | 12-18-19

HAD SIX DOUBLE-FIGURE SCORERS

A-State vs Troy | 2-9-19
Opponent **Troy | 3-7-20**

HAD FIVE DOUBLE-FIGURE SCORERS

A-State vs South Alabama | 3-10-20
Opponent DePaul | 11-22-19

HAD FOUR DOUBLE-FIGURE SCORERS

A-State vs Texas State | 1-9-21
Opponent **Arkansas-Pine Bluff | 11-27-20**

HAD NO PLAYERS SCORE IN DOUBLE FIGURES

A-State **at Louisiana | 1-23-20**
Opponent by Wichita State | 11-21-15

HAD 3 PLAYERS SCORE 20 POINTS

A-State at Troy (Brown-Haywood - 23, Flanery 22, Gamble - 21) | 2-5-16
Opponent South Alabama (Jones - 22, Kines - 21, Lewis - 20) | 3-10-20

HAD 2 PLAYERS SCORE 20 POINTS

A-State vs SIU Edwardsville (Martin - 28, Stinson - 24) | 12-2-20
Opponent Troy (Japonica James - 25 & Alexus Dye - 23) | 2-22-20

HAD TWO DOUBLE-FIGURE REBOUNDERS

A-State vs. South Alabama (Morgan Wallace - 10 & Peyton Martin - 10) | 3-10-20
Opponent Troy (Alexus Dye - 19 & Harriet Winchester - 10) | 2-22-20

HAD TWO WITH DOUBLE-DOUBLES

A-State vs. South Alabama (Morgan Wallace - 18/10 & Peyton Martin - 16/10) | 3-10-20
Opponent by Coastal Carolina (Aja Blount & Naheria Hamilton) | 3-11-19

FAILED TO MAKE A 3-POINT FIELD GOAL

A-State vs Texas State | 1-11-18
Opponent by Little Rock | 1-25-14

DEFEATED A RANKED TEAM

A-State vs. #22 TCU (68-64) | 12-5-04

DEFEATED A TOP-10 TEAM

A-State vs. #8 Virginia (86-77) | 11-22-98

WON AN OVERTIME GAME

A-State vs. Georgia State (70-68) | 1-9-20
Opponent by Western Kentucky (78-83) | 2-10-10

WON A DOUBLE-OVERTIME GAME

A-State Never
Opponent by SMU (80-86) | 11-26-10

WON A TRIPLE-OVERTIME GAME

A-State Never
Opponent Never

WON A QUADRUPLE-OVERTIME GAME

A-State vs. Ole Miss (86-81) | 12-7-01
Opponent Never

OVERCAME A 20+-POINT DEFICIT TO WIN

A-State vs. South Alabama (21) | 3-5-20 (86-80)

THE LAST TIME A PLAYER

RECORDED A QUADRUPLE-DOUBLE (PTS/REB/AST/STL)

A-State..... Jan. 27, 1993, Sonja Tate at SW Louisiana (29 Pts, 14 Rebs, 10 Ast, 10 Stl)

RECORDED A TRIPLE-DOUBLE (PTS/REB/AST)

A-State..... Dec. 16, 2006, Rudy Sims vs. ULL (15 pts, 11 Rebs, 10 Ast)

RECORDED A DOUBLE-DOUBLE (PTS,REB)

A-State..... Jan. 4, 2021, vs Central Baptist (Karolina Szydłowska - 10 pts, 11 rebs)

RECORDED A DOUBLE-DOUBLE (PTS, AST)

A-State..... Feb. 20, 2016 - vs App State - (Aundrea Gamble - 31/11)

WENT PERFECT FROM THE 3-POINT LINE (MIN 4 ATTEMPTS)

A-State..... Payton Tennison (4-4) vs. Appalachian State | 1-16-20

WENT PERFECT FROM THE FREE THROW LINE (MIN 5 ATTEMPTS)

A-State..... Morgan Wallace (6-6) at ULM | 1-15-21

WENT PERFECT FROM THE FIELD (MIN 5 ATTEMPTS)

A-State..... Payton Tennison (5-5) vs. Appalachian State | 1-16-20

SCORED 50 POINTS

A-State..... 1992-1993 vs SW Louisiana (Sonja Tate- 50)

SCORED 40 POINTS

A-State..... 1992-1993 vs Texas Pan American (Sonja Tate - 44)

SCORED 30 POINTS

A-State..... December 20, 2016 - vs Northern Kentucky (Jada Ford - 30)

HAD 20 REBOUNDS

A-State..... 1976-1977 - vs Arkansas Tech (Sue Jayroe - 23)

HAD 15 REBOUNDS

A-State..... Dec. 15, 2020 - vs Champion Christian (Seynabou Thiam - 18)

HAD 10 ASSISTS

A-State..... January 24, 2015 - at Troy (Aundrea Gamble - 11)

HAD 5 STEALS

A-State..... December 17, 2020 vs Champion Christian (Jireh Washington - 5)

HAD 5 BLOCKED SHOTS

A-State..... January 27, 2018 at Appalachian State (Lauren Bradshaw - 6)

HAD 7 OR MORE BLOCKED SHOTS

A-State..... 1999-2000 - at New Orleans (Kim Davis - 7)

2020-21 RESULTS

Date	OPPONENT	W/L	SCORE	Record (Sun Belt)	High Points	High Rebounds	High Assists	High Steals	High Blocks	Attendance
Nov. 27	UAPB	L	68-85	0-1	Wallace - 15	Wallace - 8	Stinson - 6	Wallace - 2	Wallace - 2	422
Dec. 2	SIU EDWARDSVILLE	W	80-73	1-1	Martin - 28	Martin - 8	Wallace - 8	Washington - 7	Love - 1	338
Dec. 11	WILLIAMS BAPTIST	W	96-46	2-1	Stinson - 24	Martin - 9	Two tied - 5	Washington - 5	Martin - 2	541
Dec. 15	CHAMPION CHR.	W	93-49	3-1	Stinson - 12	Thiam - 18	Cantone - 5	Two tied - 3	Two tied - 1	207
Dec. 17	CHAMPION CHR.	W	88-38	4-1	Two tied - 13	Stinson - 8	Stinson - 6	Washington - 5	Three tied - 1	189
Jan. 1	ULM* (PPD)	-	-	-	-	-	-	-	-	-
Jan. 2	ULM* (PPD)	-	-	-	-	-	-	-	-	-
Jan. 4	CENTRAL BAPTIST	W	85-39	5-1	Martin - 19	Szydłowska - 11	Two tied - 6	Love - 4	Szydłowska - 3	172
Jan. 8	TEXAS STATE*	W	54-53	6-1 (1-0)	Wallace - 12	Jackson - 10	Two tied - 3	Two tied - 3	Martin - 3	218
Jan. 9	TEXAS STATE*	W	70-54	7-1 (2-0)	Martin - 18	Wallace - 10	Two tied - 3	Two tied - 3	-	303
Jan. 15	at ULM*	W	64-50	8-1 (3-0)	Washington - 24	Jackson - 10	Stinson - 4	Wallace - 4	-	665
Jan. 16	at ULM*	W	59-44	9-1 (4-0)	Washington - 17	Martin - 9	Wallace - 4	Washington - 4	Two tied - 1	718
Jan. 22	LOUISIANA*	-	-	-	-	-	-	-	-	-
Jan. 23	LOUISIANA*	-	-	-	-	-	-	-	-	-
Jan. 29	at UT Arlington*	-	-	-	-	-	-	-	-	-
Jan. 30	at UT Arlington*	-	-	-	-	-	-	-	-	-
Feb. 5	at Louisiana*	-	-	-	-	-	-	-	-	-
Feb. 6	at Louisiana*	-	-	-	-	-	-	-	-	-
Feb. 10	LITTLE ROCK*	-	-	-	-	-	-	-	-	-
Feb. 13	at Little Rock*	-	-	-	-	-	-	-	-	-
Feb. 19	at Texas State*	-	-	-	-	-	-	-	-	-
Feb. 20	at Texas State*	-	-	-	-	-	-	-	-	-
Feb. 26	UT ARLINGTON*	-	-	-	-	-	-	-	-	-
Feb. 27	UT ARLINGTON*	-	-	-	-	-	-	-	-	-



HEAD COACH MATT DANIEL

Hometown: Jonesboro, Ark.

Born: February 9, 1976

Family: Dr. Jennifer Daniel (wife); daughters Steele and Brett

High School: Jonesboro High School

College: Harding University, 1998 (B.A.)

Years in coaching: 20

Twitter: @coachmattandaniel

COACHING ASSIGNMENTS YEAR-BY-YEAR

Years	School	Position	Postseason/Notables
1998-99	Arizona State	Graduate Assistant (Men's)	
1999-2003	UT Arlington	Assistant Coach (Men's)	
2003-04	Pulaski Academy (Ark.)	Head Boys' Coach	34-1, national ranking
2004-05	Colorado	Assistant Coach	
2005-08	Missouri	Assistant Coach	1 NCAA, 1 WNIT
2008-12	Central Arkansas	Head Coach	2012 Southland Champ. 1 WNIT, 1 WBI
2012-17	Marshall	Head Coach	1 WNIT, 1 WBI
2019-Pres.	Arkansas State	Head Coach	Hired March 29

DANIEL CAREER COACHING RECORD

School	Season	Overall	Conference
UCA	2008-09	6-23 .207	2-14 .125
UCA	2009-10	21-8 .724	11-5 .688
UCA	2010-11	21-12 .636	11-5 .688
UCA	2011-12	24-7 .774	14-2 .875
Marshall	2012-13	9-21 .300	3-13 .188
Marshall	2013-14	11-20 .355	3-13 .188
Marshall	2014-15	17-15 .531	8-10 .444
Marshall	2015-16	21-12 .636	9-9 .500
Marshall	2016-17	13-17 .433	5-13 .278
A-State	2019-20	11-19 .367	8-10 .444
A-State	2020-21	9-1 .900	4-0 1.000
Career	11 YRS	163-155 .513	78-94 .453

UNDER MATT DANIEL...

CATEGORY	2020-21
Leads at halftime	8-0
Trails at halftime	1-1
Tied at halftime	0-0
Shoots 45+% from the field	4-0
Shoots less than 45% from the field	5-1
Opp. shoots less than 45% from the field	7-1
Opp. shoots 45% or better from the field	2-0
Outrebounded (or ties) opponent	8-0
Outrebounded by opponent	1-1
More assists (or ties) opponent	7-0
Fewer assists than opponent	2-1
Fewer (or ties) TO than opponent	8-0
More TOs than opponent	1-1
In games decided by 10 points or less	2-0
All games	9-1
Home games	7-1
Road games	2-0
Neutral-site games	0-0
Non-SBC games	5-1
Non-SBC home games	5-1
Non-SBC road games	0-0
Non-SBC neutral-site games	0-0
SBC Games	4-0
SBC Home Games	2-0
SBC Road Games	2-0
SBC Tournament	0-0
November Games	0-1
December Games	4-0
January Games	5-0
February Games	0-0
March Games	0-0
Monday Games	1-0
Tuesday Games	1-0
Wednesday Games	1-0
Thursday Games	1-0
Friday Games	3-1
Saturday Games	2-0
Sunday Games	0-0
Overtime Games	0-0

AWARDS AND HONORS/NOTABLES

- 2x Southland Conference Coach of the Year (2010, 2012)
- Led Marshall to its first ever WNIT appearance (2015-16)
- Coached Central Arkansas to the 2012 Southland Conference regular-season crown.
- Led UCA to the nation's biggest win improvement (15 games) with the youngest team in the country in 2009-10.

MATT DANIEL VS OPPONENTS

Alabama	1-1	Nicholls State	7-2
Alabama A&M	1-0	NJIT	2-0
Appalachian State	1-0	Norfolk State	2-1
Arkansas-Monticello	0-1	North Carolina	0-1
Arkansas-Pine Bluff	4-1	North Carolina A&T	0-1
Ball State	1-0	North Texas	1-3
Baylor	0-1	Northern Kentucky	1-0
Belmont	0-2	Northwestern State	5-3
Bluefield College	2-0	Ohio	0-2
Brescia	2-0	Oklahoma State	0-1
Central Baptist	4-0	Oklahoma Wesleyan	1-0
Central Methodist	2-0	Old Dominion	2-5
Champion Christian	2-0	Oral Roberts	0-1
Charlotte	1-9	Paul Quinn	1-0
Chicago State	0-2	Penn State	0-1
Coastal Carolina	3-0	Prairie View A&M	0-1
Cornell	1-1	Presbyterian	1-0
Davis & Elkins	1-0	Philander Smith	1-0
Delaware State	1-0	Radford	1-0
DePaul	0-1	Rhode Island	2-0
East Carolina	1-2	Rice	2-3
Eastern Kentucky	2-2	Robert Morris	1-1
Ecclesia	3-0	Sam Houston State	3-2
Fairfield	1-0	Saint Francis (PA)	1-0
FAU	3-3	Salem International	1-0
FIU	5-1	San Diego State	1-0
Florida A&M	1-0	SMU	0-1
Furman	1-0	South Alabama	1-2
Georgia Southern	1-1	Southeast Missouri State	1-2
Georgia State	1-1	Southeastern Louisiana	4-4
Georgia Tech	0-1	Southern	1-0
Grambling	1-0	Southern Illinois	3-1
Hendrix	1-0	SIU Edwardsville	3-0
High Point	1-0	Southern Miss	2-4
Houston	0-1	Stephen F. Austin	2-5
Houston Baptist	2-1	Tennessee Tech	0-1
Illinois	1-0	Texas A&M-Corpus Christi	2-2
Indiana	1-0	Texas College	1-0
Indiana State	0-2	Texas State	6-2
Jackson State	1-2	Texas Tech	0-1
Kansas State	0-1	Troy	0-2
Lamar	4-3	Tulane	0-2
Lipscomb	1-1	Tulsa	1-4
Little Rock	1-1	UAB	4-6
Longwood	1-0	UCF	0-2
LOUISIANA	0-1	ULM	4-0
Louisiana Tech	2-4	UMKC	0-1
Maine-Fort Kent	1-0	UT Arlington	3-3
Marquette	0-1	UTEP	3-2
Maryland-Eastern Shore	1-0	UT Martin	1-0
McNeese State	6-3	UT-Rio Grande Valley	1-0
Memphis	1-2	UTSA	5-3
Mercer	0-1	West Virginia	0-4
Middle Tennessee	0-7	WVU Tech	2-0
Morehead State	1-2	Western Kentucky	1-6
Morgan State	1-0	Wiley	1-0
Murray State	0-1	Williams Baptist	1-0
Navy	0-2	Wofford	1-0



Jireh WASHINGTON

GUARD
1

Junior • 5-9
Memphis, Tenn.
Central HS

2020-21 Game-by-Game

Opponent	Min.	FG-A	3PT-A	FT-A	O-D-T	PF	Ast.	TO	Blk.	Stl.	Pts.
ARK.-PINE BLUFF	*21	5-8	1-3	1-2	0-1-1	4	1	4	0	0	12
SIU-EDWARDSVILLE	*38	4-8	0-2	2-6	1-5-6	4	6	5	0	7	10
WILLIAMS BAPTIST	*25	5-10	0-2	0-1	2-2-4	1	5	1	0	5	10
CHAMPION CHRISTIAN	*10	2-3	0-1	0-0	0-2-2	1	2	0	0	2	4
CHAMPION CHRISTIAN	*18	4-7	2-3	2-2	1-3-4	0	1	0	0	5	12
ULM*		---POSTPONED---									
ULM*		---POSTPONED---									
CENTRAL BAPTIST	*25	6-9	1-3	0-0	2-5-7	1	6	1	0	2	13
TEXAS STATE*	*28	4-11	0-2	3-5	0-1-1	4	2	4	0	1	11
TEXAS STATE*	*39	4-11	1-2	2-2	0-7-7	2	2	5	0	3	11
at ULM*	*38	6-10	2-3	10-12	1-6-7	1	2	4	0	2	24
at ULM*	*38	6-13	0-1	5-7	2-4-6	0	2	3	0	4	17
LOUISIANA*											
LOUISIANA*											
at UT Arlington*											
at UT Arlington*											
at Louisiana*											
at Louisiana*											
LITTLE ROCK*											
at Little Rock*											
at Texas State*											
at Texas State*											
UT ARLINGTON*											
UT ARLINGTON*											

* — Indicates Game Started



Hilani CANTONE

GUARD
2

Freshman • 5-8
Apopka, Fla.
Apopka HS

2020-21 Game-by-Game

Opponent	Min.	FG-A	3PT-A	FT-A	O-D-T	PF	Ast.	TO	Blk.	Stl.	Pts.
ARK.-PINE BLUFF	4	0-0	0-0	0-0	0-0-0	2	0	2	0	0	0
SIU-EDWARDSVILLE	3	0-0	0-0	0-0	0-0-0	0	0	0	0	1	0
WILLIAMS BAPTIST	7	1-2	0-1	0-0	0-0-0	0	1	0	0	0	2
CHAMPION CHRISTIAN	23	4-8	1-4	1-2	1-0-1	0	5	3	0	2	10
CHAMPION CHRISTIAN	13	2-4	0-0	2-2	0-1-1	1	0	2	0	3	6
ULM*		---POSTPONED---									
ULM*		---POSTPONED---									
CENTRAL BAPTIST	16	1-4	1-2	1-2	0-1-1	1	4	0	0	0	4
TEXAS STATE*		---DID NOT PLAY---									
TEXAS STATE*	2	0-1	0-0	0-0	0-0-0	0	1	0	0	0	0
at ULM*	2	0-0	0-0	0-0	0-0-0	3	0	0	0	0	0
at ULM*	1	0-0	0-0	0-0	0-0-0	0	1	0	0	0	0
LOUISIANA*											
LOUISIANA*											
at UT Arlington*											
at UT Arlington*											
at Louisiana*											
at Louisiana*											
LITTLE ROCK*											
at Little Rock*											
at Texas State*											
at Texas State*											
UT ARLINGTON*											
UT ARLINGTON*											

* — Indicates Game Started

CAREER STATISTICS & SINGLE-GAME HIGHS

			Field Goals		3-Point		F-Throws		Rebounds					Scoring					
SEASON/TEAM	GP-GS	MIN/AVG	FG-FGA	FG%	3FG-FGA	3FG%	FT-FTA	FT%	OFF	DEF	TOT	AVG	PF-FO	AST	TO	BLK	STL	PTS	AVG
2018-19 ASU	30-26	784/26.1	113-246	.459	8-33	.242	79-123	.642	34	90	124	4.1	76-0	95	90	0	42	313	10.4
2019-20 ASU	30-29	869/29.0	139-326	.426	14-56	.250	97-148	.655	33	97	130	4.3	61-2	111	95	1	42	389	13.0
2020-21 ASU	10-10	279/27.9	46-90	.511	7-22	.318	25-37	.676	9	36	45	4.5	18-0	29	27	0	31	124	12.4
TOTAL	70-65	1932/27.6	298-662	.450	29-111	.261	201-308	.653	76	223	299	4.3	155-2	235	212	1	115	826	11.8

Single Game Highs

Statistic	Value
Points	24 vs Ga. Southern 03/02/19, at Tulsa 11/09/19, at La.-Monroe 01/15/21
Rebounds	10 vs Georgia St. 01/09/20
Assists	8 vs Little Rock 02/28/20, vs Ark.-Pine Bluff 12/09/19
Steals	7 vs SIUE 12/02/20
Blocks	1 at Murray St. 11/26/19
FG Made	10 at Tulsa 11/09/19
FG Attempts	17 at Tulsa 11/09/19, vs Georgia St. 01/09/20
3FG Made	2 5 times
3FG Attempts	5 at Troy 02/22/20
FT Made	10 at La.-Monroe 01/15/21
FT Attempts	12 vs Troy 03/07/20, at La.-Monroe 01/15/21

Miscellaneous Statistics

	2020-21	Career
Games with 10+ Points	9	43
Games with 10+ Rebounds	0	1
Double-Doubles	0	1
Games with 35+ Minutes	4	13
Games with 20+ Points	1	9
Games with 25+ Points	0	0
Games Leading A-State in Points	2	19
Games Leading A-State in Rebounds	0	6

CAREER STATISTICS & SINGLE-GAME HIGHS

			Field Goals		3-Point		F-Throws		Rebounds						Scoring						
SEASON	TEAM	GP-GS	MIN	AVG	FG-FGA	FG%	3FG-FGA	3FG%	FT-FTA	FT%	OFF	DEF	TOT	AVG	PF-FO	AST	TO	BLK	STL	PTS	AVG
2020-21	ASU	9-0	70	7.8	8-19	.421	2-7	.286	4-6	.667	1	2	3	0.3	7-0	12	7	0	6	22	2.4
TOTAL		9-0	70	7.8	8-19	.421	2-7	.286	4-6	.667	1	2	3	0.3	7-0	12	7	0	6	22	2.4

Single Game Highs

Statistic	Value
Points	10 vs Champion Chris. 12/15/20
Rebounds	1 vs Champion Chris. 12/15/20, vs Champion Chris. 12/17/20, vs Central Baptist 01/04/21
Assists	5 vs Champion Chris. 12/15/20
Steals	3 vs Champion Chris. 12/17/20
FG Made	4 vs Champion Chris. 12/15/20
FG Attempts	8 vs Champion Chris. 12/15/20
3FG Made	1 vs Champion Chris. 12/15/20, vs Central Baptist 01/04/21
3FG Attempts	4 vs Champion Chris. 12/15/20
FT Made	2 vs Champion Chris. 12/17/20
FT Attempts	2 vs Champion Chris. 12/15/20, vs Champion Chris. 12/17/20, vs Central Baptist 01/04/21

Miscellaneous Statistics

	2020-21	Career
Games with 10+ Points	1	1
Games with 10+ Rebounds	0	0
Double-Doubles	0	0
Games with 35+ Minutes	0	0
Games with 20+ Points	0	0
Games with 25+ Points	0	0
Games Leading A-State in Points	0	0
Games Leading A-State in Rebounds	0	0



Morgan WALLACE

GUARD
3

Senior • 5-10
Little Rock, Ark.
Pulaski Academy

2020-21 Game-by-Game

Opponent	Min.	FG-A	3PT-A	FT-A	O-D-T	PF	Ass.	TO	Blk.	Stl.	Pts.
ARK.-PINE BLUFF	*38	6-15	1-6	2-3	0-8-8	2	4	4	2	2	15
SIU-EDWARDSVILLE	*39	2-11	1-4	4-6	1-3-4	3	8	3	0	1	9
WILLIAMS BAPTIST	*26	2-4	0-1	6-8	0-4-4	1	5	1	0	1	10
CHAMPION CHRISTIAN	*7	1-1	0-0	0-0	1-1-2	0	3	0	0	0	2
CHAMPION CHRISTIAN	*24	3-3	0-0	0-0	0-2-2	3	4	0	0	0	6
ULM*											
ULM*											
CENTRAL BAPTIST											
TEXAS STATE*	*37	3-4	1-1	5-6	1-8-9	0	3	6	0	3	12
TEXAS STATE*	*38	1-5	0-2	6-6	2-8-10	0	3	1	0	1	8
at ULM*	*37	2-3	1-2	6-6	1-2-3	3	0	4	0	4	11
at ULM*	*37	3-9	1-3	2-5	3-3-6	4	4	0	0	1	9
LOUISIANA*											
LOUISIANA*											
at UT Arlington*											
at UT Arlington*											
at Louisiana*											
at Louisiana*											
LITTLE ROCK*											
at Little Rock*											
at Texas State*											
at Texas State*											
UT ARLINGTON*											
UT ARLINGTON*											

* — Indicates Game Started



Mya LOVE

GUARD
4

Sophomore • 5-8
Jonesboro, Ark.
Nettleton HS

2020-21 Game-by-Game

Opponent	Min.	FG-A	3PT-A	FT-A	O-D-T	PF	Ass.	TO	Blk.	Stl.	Pts.
ARK.-PINE BLUFF	14	0-1	0-1	2-2	1-0-1	2	0	2	0	1	2
SIU-EDWARDSVILLE	24	2-5	0-1	0-2	0-1-1	3	5	3	1	1	4
WILLIAMS BAPTIST	11	0-3	0-1	2-2	3-3-6	2	1	0	0	2	2
CHAMPION CHRISTIAN	15	2-5	1-2	1-4	2-3-5	0	1	1	0	3	6
CHAMPION CHRISTIAN	*19	4-7	2-4	3-4	2-1-3	3	3	1	0	2	13
ULM*											
ULM*											
CENTRAL BAPTIST	*23	2-4	0-2	1-2	3-4-7	4	2	1	0	4	5
TEXAS STATE*	*24	2-3	1-1	1-2	0-1-1	4	0	1	0	0	6
TEXAS STATE*	*21	1-3	0-1	0-0	2-2-4	5	3	2	0	1	2
at ULM*	*16	1-2	1-1	1-2	0-0-0	3	1	0	0	0	4
at ULM*	*20	0-2	0-2	0-0	2-2-4	2	0	2	0	0	0
LOUISIANA*											
LOUISIANA*											
at UT Arlington*											
at UT Arlington*											
at Louisiana*											
at Louisiana*											
LITTLE ROCK*											
at Little Rock*											
at Texas State*											
at Texas State*											
UT ARLINGTON*											
UT ARLINGTON*											

* — Indicates Game Started

CAREER STATISTICS & SINGLE-GAME HIGHS

SEASON TEAM	GP-GS	MIN/AVG	Field Goals		3-Point		F-Throws		Rebounds			PF-FO			AST	TO	BLK	STL	PTS	Scoring
			FG-FGA	FG%	3FG-FGA	3FG%	FT-FTA	FT%	OFF	DEF	TOT	AVG								
2017-18 ASU	20-8	393/19.7	42-102	.412	5-17	.294	44-70	.629	28	43	71	3.6	35-0	32	27	2	15	133	6.7	
2018-19 ASU	26-24	732/28.2	58-159	.365	8-31	.258	76-120	.633	45	94	139	5.3	52-0	52	48	3	35	200	7.7	
2019-20 ASU	29-29	998/34.4	101-249	.406	16-64	.250	99-137	.723	57	182	239	8.2	71-3	65	51	5	56	317	10.9	
2020-21 ASU	9-9	283/31.5	23-55	.418	5-19	.263	31-40	.775	9	39	48	5.3	16-0	34	19	2	13	82	9.1	
TOTAL	84-70	2406/28.6	224-565	.396	34-131	.260	250-367	.681	139	358	497	5.9	174-3	183	145	12	119	732	8.7	

Single Game Highs

Statistic	Value
Points	21 at DePaul 11/22/19, vs Georgia St. 01/09/20
Rebounds	15 vs Troy 03/07/20, vs Central Baptist 11/06/19
Assists	8 vs SIUE 12/02/20
Steals	4 6 times
Blocks	2 vs Ark.-Pine Bluff 11/27/20
FG Made	7 at DePaul 11/22/19
FG Attempts	18 vs Appalachian St. 03/06/18
3FG Made	3 at Missouri 12/30/18
3FG Attempts	6 vs South Alabama 03/10/20, vs Ark.-Pine Bluff 11/27/20
FT Made	11 vs Georgia St. 01/09/20
FT Attempts	14 at UT Martin 11/17/18

Miscellaneous Statistics

	2020-21	Career
Games with 10+ Points	4	38
Games with 10+ Rebounds	1	14
Double-Doubles	0	9
Games with 35+ Minutes	6	29
Games with 20+ Points	0	2
Games with 25+ Points	0	0
Games Leading A-State in Points	2	10
Games Leading A-State in Rebounds	2	30

CAREER STATISTICS & SINGLE-GAME HIGHS

			Field Goals		3-Point		F-Throws		Rebounds						Scoring				
SEASON/TEAM	GP-GS	MIN/AVG	FG-FGA	FG%	3FG-FGA	3FG%	FT-FTA	FT%	OFF DEF	TO	AVG	PF-FO	AST	TO	BLK	STL	PTS	AVG	
2019-20 ASU	26-8	373/14.3	25-72	.347	5-18	.278	14-22	.636	27	30	57	2.2	50-0	13	20	0	20	69	2.7
2020-21 ASU	10-6	188/18.8	14-35	.400	5-16	.313	11-20	.550	15	17	32	3.2	28-1	16	13	1	14	44	4.4
TOTAL	36-14	561/15.6	39-107	.364	10-34	.294	25-42	.595	42	47	89	2.5	78-1	29	33	1	34	113	3.1

Single Game Highs

Statistic	Value
Points	15 vs Little Rock 02/28/20, vs Coastal Carolina 01/25/20
Rebounds	7 vs Coastal Carolina 01/25/20, vs Central Baptist 01/04/21
Assists	5 vs SIUE 12/02/20
Steals	4 vs Central Baptist 01/04/21
Blocks	1 vs SIUE 12/02/20
FG Made	6 vs Coastal Carolina 01/25/20
FG Attempts	10 at Troy 02/22/20, vs Coastal Carolina 01/25/20
3FG Made	2 vs Little Rock 02/28/20, vs Coastal Carolina 01/25/20, vs Champion Chris. 12/17/20
3FG Attempts	4 vs Champion Chris. 12/17/20
FT Made	5 vs Little Rock 02/28/20
FT Attempts	5 vs Little Rock 02/28/20

Miscellaneous Statistics

	2020-21	Career
Games with 10+ Points	1	3
Games with 10+ Rebounds	0	0
Double-Doubles	0	0
Games with 35+ Minutes	0	0
Games with 20+ Points	0	0
Games with 25+ Points	0	0
Games Leading A-State in Points	1	1
Games Leading A-State in Rebounds	0	0



Jordyn BROWN

GUARD
5

Junior • 5-8
Clovis, Calif.
Clovis North HS
Fresno City College

2020-21 Game-by-Game

Opponent	Min.	FG-A	3PT-A	FT-A	O-D-T	PF	Ass.	TO	Blk.	Stl.	Pts.
ARK-PINE BLUFF	6	0-1	0-1	0-0	0-0-0	1	0	0	0	0	0
SIU-EDWARDSVILLE	1	0-1	0-1	0-0	0-0-0	0	0	0	0	0	0
WILLIAMS BAPTIST	14	1-3	0-2	2-2	0-3-3	0	1	0	0	0	4
CHAMPION CHRISTIAN	23	3-8	1-5	2-4	1-4-5	1	2	1	0	3	9
CHAMPION CHRISTIAN	15	1-4	0-3	0-0	0-2-2	1	1	2	0	0	2
ULM*		---POSTPONED---									
ULM*		---POSTPONED---									
CENTRAL BAPTIST	7	0-0	0-0	0-0	1-5-6	1	2	1	0	0	0
TEXAS STATE*	0+	0-0	0-0	0-0	0-0-0	0	0	0	0	0	0
TEXAS STATE*	0+	0-0	0-0	0-0	0-0-0	0	0	0	0	0	0
at ULM*	1	0-0	0-0	0-0	0-0-0	0	0	0	0	0	0
at ULM*		---DID NOT PLAY---									
LOUISIANA*											
LOUISIANA*											
at UT Arlington*											
at UT Arlington*											
at Louisiana*											
at Louisiana*											
LITTLE ROCK*											
at Little Rock*											
at Texas State*											
at Texas State*											
UT ARLINGTON*											
UT ARLINGTON*											

* — Indicates Game Started

CAREER STATISTICS & SINGLE-GAME HIGHS

			Field Goals		3-Point		F-Throws		Rebounds					Scoring							
SEASON	TEAM	GP-GS	MIN	AVG	FG-FGA	FG%	3FG-FGA	3FG%	FT-FTA	FT%	OFF DEF	TOT	AVG	PF-FO	AST	BLK	STL	PTS	AVG		
2020-21	ASU	9-0	69/7.6	5-17	.294	1-12	.083	4-6	.667		2	14	16	1.8	4-0	6	4	0	3	15	1.7
TOTAL		9-0	69/7.6	5-17	.294	1-12	.083	4-6	.667		2	14	16	1.8	4-0	6	4	0	3	15	1.7

Single Game Highs

Statistic	Value
Points	9 vs Champion Chris. 12/15/20
Rebounds	6 vs Central Baptist 01/04/21
Assists	2 vs Champion Chris. 12/15/20, vs Central Baptist 01/04/21
Steals	3 vs Champion Chris. 12/15/20
FG Made	3 vs Champion Chris. 12/15/20
FG Attempts	8 vs Champion Chris. 12/15/20
3FG Made	1 vs Champion Chris. 12/15/20
3FG Attempts	5 vs Champion Chris. 12/15/20
FT Made	2 vs Williams Baptist 12/11/20, vs Champion Chris. 12/15/20
FT Attempts	4 vs Champion Chris. 12/15/20

Miscellaneous Statistics

	2020-21	Career
Games with 10+ Points	0	0
Games with 10+ Rebounds	0	0
Double-Doubles	0	0
Games with 35+ Minutes	0	0
Games with 20+ Points	0	0
Games with 25+ Points	0	0
Games Leading A-State in Points	0	0
Games Leading A-State in Rebounds	0	0



Jada STINSON

GUARD
10

Redshirt Junior • 5-8
Elizabethtown, Ky.
Elizabethtown HS
Memphis

2020-21 Game-by-Game

Opponent	Min.	FG-A	3PT-A	FT-A	O-D-T	PF	Ass.	TO	Blk.	Stl.	Pts.
ARK-PINE BLUFF	*37	3-17	0-7	2-2	2-3-5	1	6	3	0	0	8
SIU-EDWARDSVILLE	*38	8-9	6-7	2-2	0-4-4	3	0	4	0	2	24
WILLIAMS BAPTIST	*30	9-14	3-7	0-0	0-4-4	0	3	2	0	2	21
CHAMPION CHRISTIAN	*7	5-7	2-4	0-0	0-0-0	0	1	0	0	2	12
CHAMPION CHRISTIAN	*20	1-7	1-5	0-0	3-5-8	3	6	0	0	0	3
ULM*		---POSTPONED---									
ULM*		---POSTPONED---									
CENTRAL BAPTIST	*25	3-10	2-8	0-0	0-5-5	2	6	0	1	0	8
TEXAS STATE*	*34	3-9	1-5	0-0	0-3-3	2	3	4	0	3	7
TEXAS STATE*	23	5-9	1-5	1-3	0-3-3	3	2	4	0	3	12
at ULM*	32	3-11	2-7	1-2	0-3-3	1	4	2	0	4	9
at ULM*	32	5-16	5-10	0-0	1-1-2	2	0	2	0	2	15
LOUISIANA*											
LOUISIANA*											
at UT Arlington*											
at UT Arlington*											
at Louisiana*											
at Louisiana*											
LITTLE ROCK*											
at Little Rock*											
at Texas State*											
at Texas State*											
UT ARLINGTON*											
UT ARLINGTON*											

* — Indicates Game Started

CAREER STATISTICS & SINGLE-GAME HIGHS

		Field Goals			3-Point		F-Throws		Rebounds		PF-FO		AST		TO		BLK/STL		Scoring		
SEASON	TEAM	GP-GS	MIN	AVG	FG-G	FG%	3FG-G	3FG%	FT-F	FT%	OFF	DEF	TOT	AST	TO	BLK	STL	PTS	AVG		
2017-18	Mem	28-14	858	30.6	71-202	.351	29-95	.305	20-33	.606	11	52	63	2.3	46-1	73	81	3	24	191	6.8
2018-19	Mem	30-16	728	24.3	66-213	.310	33-130	.254	8-15	.533	10	48	58	1.9	34-0	48	54	4	19	173	5.8
2020-21	ASU	10-7	279	27.9	45-109	.413	23-65	.354	6-9	.667	6	31	37	3.7	17-0	31	21	1	18	119	11.9
TOTAL FOR ASU		10-7	279/27.9	45-109	.413	23-65	.354	6-9	.667	6	31	37	3.7	17-0	31	21	1	18	119	11.9	
TOTAL		68-37	1865/27.4	182-524	.347	85-290	.293	34-57	.596	27	131	158	2.3	97-152	156	8	61	483	7.1		

Single Game Highs

Statistic	Value
Points	24 vs SIUE 12/02/20
Rebounds	8 vs Champion Chris. 12/17/20
Assists	7 at East Carolina 02/14/18
Steals	4 at La.-Monroe 01/15/21
Blocks	1 8 times
FG Made	9 vs Williams Baptist 12/11/20
FG Attempts	17 vs Ark.-Pine Bluff 11/27/20
3FG Made	6 vs SIUE 12/02/20
3FG Attempts	12 vs Temple 03/04/19
FT Made	4 vs Samford 12/09/18, at Little Rock 11/12/17
FT Attempts	5 vs Samford 12/09/18

Miscellaneous Statistics

	2020-21	Career
Games with 10+ Points	5	11
Games with 10+ Rebounds	0	0
Double-Doubles	0	0
Games with 35+ Minutes	2	16
Games with 20+ Points	2	2
Games with 25+ Points	0	0
Games Leading A-State in Points	2	2
Games Leading A-State in Rebounds	1	1



Vic DAMES

GUARD
11

Freshman • 6-0
Loganville, Ga.
Grayson HS

2020-21 Game-by-Game

Opponent	Min.	FG-A	3PT-A	FT-A	O-D-T	PF	Ass.	TO	Blk.	Stl.	Pts.
ARK.-PINE BLUFF											
SIU-EDWARDSVILLE											
WILLIAMS BAPTIST	3	1-1	0-0	0-0	0-0-0	0	0	0	0	0	2
CHAMPION CHRISTIAN	10	2-3	1-2	0-0	1-1-2	0	1	2	0	0	5
CHAMPION CHRISTIAN	2	0-1	0-1	0-0	0	0	0	0	0	0	0
ULM*											
ULM*											
CENTRAL BAPTIST	4	1-2	1-1	0-0	0-0-0	0	0	0	0	0	3
TEXAS STATE*											
TEXAS STATE*											
at ULM*											
at ULM*											
LOUISIANA*											
LOUISIANA*											
at UT Arlington*											
at UT Arlington*											
at Louisiana*											
at Louisiana*											
LITTLE ROCK*											
at Little Rock*											
at Texas State*											
at Texas State*											
UT ARLINGTON*											
UT ARLINGTON*											

* — Indicates Game Started

CAREER STATISTICS & SINGLE-GAME HIGHS

			Field Goals		3-Point		F-Throws		Rebounds								Scoring			
SEASON TEAM	GP-GS	MIN	AVG	FG-FGA	FG%	3FG-FGA	3FG%	FT-FTA	FT%	OFF	DEF	TOT	AVG	PF-FO	AST	TO	BLK	STL	PTS	AVG
2020-21 ASU	4-0	20/5.0	4-7	.571	2-4	.500	0-0	.000	1	1	2	0.5	0-0	1	2	0	0	0	10	2.5
TOTAL	4-0	20/5.0	4-7	.571	2-4	.500	0-0	.000	1	1	2	0.5	0-0	1	2	0	0	0	10	2.5

Single Game Highs

Statistic	Value
Points	5 vs Champion Chris. 12/15/20
Rebounds	2 vs Champion Chris. 12/15/20
Assists	1 vs Champion Chris. 12/15/20
FG Made	2 vs Champion Chris. 12/15/20
FG Attempts	3 vs Champion Chris. 12/15/20
3FG Made	1 vs Champion Chris. 12/15/20, vs Central Baptist 01/04/21
3FG Attempts	2 vs Champion Chris. 12/15/20

Miscellaneous Statistics

	2020-21	Career
Games with 10+ Points	0	0
Games with 10+ Rebounds	0	0
Double-Doubles	0	0
Games with 35+ Minutes	0	0
Games with 20+ Points	0	0
Games with 25+ Points	0	0
Games Leading A-State in Points	0	0
Games Leading A-State in Rebounds	0	0



Mattie HATCHER

GUARD
12

Freshman • 5-5
Little Rock, Ark.
Pulaski Academy

2020-21 Game-by-Game

Opponent	Min.	FG-A	3PT-A	FT-A	O-D-T	PF	Ass.	TO	Blk.	Stl.	Pts.
ARK.-PINE BLUFF	9	1-3	1-3	0-0	0-1-1	1	0	0	0	0	3
SIU-EDWARDSVILLE											
WILLIAMS BAPTIST	12	3-5	2-2	1-2	2-1-3	0	4	1	0	0	9
CHAMPION CHRISTIAN	12	2-7	0-3	0-0	0-1-1	4	0	2	0	0	4
CHAMPION CHRISTIAN	15	1-2	1-1	0-0	0-1-1	2	1	2	0	2	3
ULM*											
ULM*											
CENTRAL BAPTIST	16	4-8	3-7	0-0	0-0-0	0	3	0	0	2	11
TEXAS STATE*	12	1-2	1-2	0-0	0-1-1	1	1	2	0	0	3
TEXAS STATE*	5	0-0	0-0	0-0	0-0-0	2	1	0	0	0	0
at ULM*	6	0-2	0-1	0-0	0-0-0	0	0	1	0	0	0
at ULM*	1	0-0	0-0	0-0	0-0-0	0	0	0	0	0	0
LOUISIANA*											
LOUISIANA*											
at UT Arlington*											
at UT Arlington*											
at Louisiana*											
at Louisiana*											
LITTLE ROCK*											
at Little Rock*											
at Texas State*											
at Texas State*											
UT ARLINGTON*											
UT ARLINGTON*											

* — Indicates Game Started

CAREER STATISTICS & SINGLE-GAME HIGHS

				Field Goals		3-Point		F-Throws		Rebounds						Scoring				
SEASON TEAM	GP-GS	MIN	AVG	FG-FGA	FG%	3FG-FGA	3FG%	FT-FTA	FT%	OFF	DEF	TOT	AVG	PF-FO	AST	TO	BLK	STL	PTS	AVG
2020-21 ASU	9-0	87/9.7	12-29	.414		8-19	.421	1-2	.500	2	5	7	0.8	10-0	10	8	0	4	33	3.7
TOTAL	9-0	87/9.7	12-29	.414		8-19	.421	1-2	.500	2	5	7	0.8	10-0	10	8	0	4	33	3.7

Single Game Highs

Statistic	Value
Points	11 vs Central Baptist 01/04/21
Rebounds	3 vs Williams Baptist 12/11/20
Assists	4 vs Williams Baptist 12/11/20
Steals	2 vs Champion Chris. 12/17/20, vs Central Baptist 01/04/21
FG Made	4 vs Central Baptist 01/04/21
FG Attempts	8 vs Central Baptist 01/04/21
3FG Made	3 vs Central Baptist 01/04/21
3FG Attempts	7 vs Central Baptist 01/04/21
FT Made	1 vs Williams Baptist 12/11/20
FT Attempts	2 vs Williams Baptist 12/11/20

Miscellaneous Statistics

	2020-21	Career
Games with 10+ Points	1	1
Games with 10+ Rebounds	0	0
Double-Doubles	0	0
Games with 35+ Minutes	0	0
Games with 20+ Points	0	0
Games with 25+ Points	0	0
Games Leading A-State in Points	0	0
Games Leading A-State in Rebounds	0	0



**Talia
ROLDAN**
FORWARD
13

Redshirt Junior • 6-4
Merrillville, Ind.
Andean HS
UAB

2020-21 Game-by-Game

Opponent	Min.	FG-A	3PT-A	FT-A	O-D-T	PF	Ast.	TO	Blk.	Stl.	Pts.
ARK.-PINE BLUFF	9	0-1	0-0	2-2	2-1-3	1	0	1	0	0	2
SIU-EDWARDSVILLE	1	0-0	0-0	0-0	0-0-0	0	0	0	0	0	0
WILLIAMS BAPTIST	11	1-3	0-2	1-2	2-6-8	1	0	1	1	0	3
CHAMPION CHRISTIAN	19	4-5	0-0	0-0	2-3-5	0	2	3	0	0	8
CHAMPION CHRISTIAN	9	1-3	0-0	2-2	2-0-2	0	0	0	0	1	4
ULM*											
ULM*											
CENTRAL BAPTIST											
TEXAS STATE*											
TEXAS STATE*											
at ULM*											
at ULM*											
LOUISIANA*											
LOUISIANA*											
at UT Arlington*											
at UT Arlington*											
at Louisiana*											
at Louisiana*											
LITTLE ROCK*											
at Little Rock*											
at Texas State*											
at Texas State*											
UT ARLINGTON*											
UT ARLINGTON*											

* — Indicates Game Started



**Hailee
ERICKSON**
GUARD
14

Senior • 5-5
Alton, Mo.
Alton HS
Three Rivers CC [Mo.]

2020-21 Game-by-Game

Opponent	Min.	FG-A	3PT-A	FT-A	O-D-T	PF	Ast.	TO	Blk.	Stl.	Pts.
ARK.-PINE BLUFF											
SIU-EDWARDSVILLE											
WILLIAMS BAPTIST	5	0-0	0-0	0-0	0-1-1	2	1	0	0	1	0
CHAMPION CHRISTIAN	9	1-5	1-5	0-0	0-0-0	0	0	1	0	1	3
CHAMPION CHRISTIAN	6	0-1	0-1	1-2	0-1-1	0	1	0	0	0	1
ULM*											
ULM*											
ULM*											
CENTRAL BAPTIST	4	0-2	0-2	0-0	0-0-0	0	1	0	0	0	0
TEXAS STATE*											
TEXAS STATE*											
at ULM*											
at ULM*											
LOUISIANA*											
LOUISIANA*											
at UT Arlington*											
at UT Arlington*											
at Louisiana*											
at Louisiana*											
LITTLE ROCK*											
at Little Rock*											
at Texas State*											
at Texas State*											
UT ARLINGTON*											
UT ARLINGTON*											

* — Indicates Game Started

CAREER STATISTICS & SINGLE-GAME HIGHS

Field Goals															3-Point		F-Throws		Rebounds		Scoring				
SEASON	TEAM	GP-GS	MIN	AVG	FG	FGA	FG%	3FG	FGA	3FG%	FT	FTA	FT%	OFF	DEF	TOT	AVG	PF	FO	AST	TO	BLK	STL	PTS	AVG
2017-18	UAB	16-0	97/6.1	11-21	.524	0-4	.000	10-15	.667	7	9	16	1.0	9-0	0	7	4	0	32	2.0					
2018-19	UAB	19-0	76/4.0	4-21	.190	0-10	.000	13-18	.722	5	14	19	1.0	11-0	2	3	4	2	21	1.1					
2020-21	ASU	5-0	48/9.6	6-12	.500	0-2	.000	5-6	.833	8	10	18	3.6	2-0	2	5	1	1	17	3.4					
TOTAL FOR ASU		5-0	48/9.6	6-12	.500	0-2	.000	5-6	.833	8	10	18	3.6	2-0	2	5	1	1	17	3.4					
TOTAL		40-0	221/5.5	21-54	.389	0-16	.000	28-39	.718	20	33	53	1.3	22-0	4	15	9	3	70	1.8					

Single Game Highs

Statistic	Value
Points	8 vs Champion Chris. 12/15/20
Rebounds	8 vs Williams Baptist 12/11/20
Assists	2 vs Champion Chris. 12/15/20
Steals	2 at Chicago St. 11/20/18
Blocks	2 vs Fla. Atlantic 01/27/18
FG Made	4 vs Champion Chris. 12/15/20
FG Attempts	5 at Louisiana Tech 03/07/19, vs Champion Chris. 12/15/20
3FG Attempts	3 at Chicago St. 11/20/18
FT Made	4 vs Miles 11/15/17
FT Attempts	6 vs Miles 11/15/17

Miscellaneous Statistics

	2020-21	Career
Games with 10+ Points	0	0
Games with 10+ Rebounds	0	0
Double-Doubles	0	0
Games with 35+ Minutes	0	0
Games with 20+ Points	0	0
Games with 25+ Points	0	0
Games Leading A-State in Points	0	0
Games Leading A-State in Rebounds	0	0

CAREER STATISTICS & SINGLE-GAME HIGHS

		Field Goals				3-Point		F-Throws		Rebounds						Scoring					
SEASON	TEAM	GP-GS	MIN	AVG	F-G	F%	3FG-F	3FG%	FT-FT	FT%	OFF	DEF	TOT	AVG	PF-FO	AST	TO	BLK	STL	PTS	AVG
2019-20	ASU	11-0		71/6.5	5-26	.192	5-25	.200	0-2	.000	1	4	5	0.5	8-0	5	5	0	2	15	1.4
2020-21	ASU	4-0		24/5.9	1-8	.125	1-8	.125	1-2	.500	0	2	2	0.5	2-0	3	1	0	2	4	1.0
TOTAL		15-0		95/6.3	6-34	.176	6-33	.182	1-4	.250	1	6	7	0.5	10-0	8	6	0	4	19	1.3

Single Game Highs

Statistic	Value
Points	6 at DePaul 11/22/19
Rebounds	2 at DePaul 11/22/19
Assists	2 vs Central Baptist 11/06/19
Steals	2 vs N.C. A&T 11/23/19
FG Made	2 at DePaul 11/22/19
FG Attempts	6 vs Central Baptist 11/06/19
3FG Made	2 at DePaul 11/22/19
3FG Attempts	6 vs Central Baptist 11/06/19
FT Made	1 vs Champion Chris. 12/17/20
FT Attempts	2 vs UT Arlington 02/13/20, vs Champion Chris. 12/17/20

Miscellaneous Statistics

	2020-21	Career
Games with 10+ Points	0	0
Games with 10+ Rebounds	0	0
Double-Doubles	0	0
Games with 35+ Minutes	0	0
Games with 20+ Points	0	0
Games with 25+ Points	0	0
Games Leading A-State in Points	0	0
Games Leading A-State in Rebounds	0	0


**Seynabou
THIAM**
CENTER
21

 Redshirt Sophomore • 6-6
Dakar, Senegal
McLennan CC [Texas]

2020-21 Game-by-Game

Opponent	Min.	FG-A	3PT-A	FT-A	O-D-T	PF	Asst.	TO	Blk.	Stl.	Pts.
ARK-PINE BLUFF	4	0-1	0-0	0-0	1-0-1	0	0	0	0	1	0
SIU-EDWARDSVILLE					--DID NOT PLAY--						
WILLIAMS BAPTIST	8	2-4	0-0	0-0	0-4-4	0	0	0	1	0	4
CHAMPION CHRISTIAN	19	4-9	0-0	1-2	11-7-18	0	0	1	1	1	9
CHAMPION CHRISTIAN	6	2-3	0-0	0-0	3-3-6	0	1	1	1	1	4
ULM*					--POSTPONED--						
ULM*					--POSTPONED--						
CENTRAL BAPTIST	7	1-2	0-0	0-0	1-2-3	0	0	0	1	0	2
TEXAS STATE*	0+	0-0	0-0	0-0	0-0-0	0	0	0	0	0	0
TEXAS STATE*	0+	0-0	0-0	0-0	0-0-0	0	0	0	0	0	0
at ULM*	1	0-0	0-0	0-0	0-0-0	0	0	0	0	0	0
at ULM*					--DID NOT PLAY--						
LOUISIANA*											
LOUISIANA*											
at UT Arlington*											
at UT Arlington*											
at Louisiana*											
at Louisiana*											
LITTLE ROCK*											
at Little Rock*											
at Texas State*											
at Texas State*											
UT ARLINGTON*											
UT ARLINGTON*											

* — Indicates Game Started

CAREER STATISTICS & SINGLE-GAME HIGHS

SEASON/TEAM	GP-GS	MIN	AVG	FG-FGA	FG%	3FG-FGA	3FG%	FT-FTA	FT%	OFF	DEF	TOT	AVG	PF	FO	AST	TO	BLK	STL	PTS	AVG
2020-21 ASU	8-0	46/5.7	9-19	.474	0-0	.000	1-2	.500	16	16	32	4.0	0-0	1	2	4	3	19	2.4		
TOTAL	8-0	46/5.7	9-19	.474	0-0	.000	1-2	.500	16	16	32	4.0	0-0	1	2	4	3	19	2.4		

Single Game Highs

Statistic	Value
Points	9 vs Champion Chris. 12/15/20
Rebounds	18 vs Champion Chris. 12/15/20
Assists	1 vs Champion Chris. 12/17/20
Steals	1 vs Ark.-Pine Bluff 11/27/20, vs Champion Chris. 12/15/20, vs Champion Chris. 12/17/20
Blocks	1 4 times
FG Made	4 vs Champion Chris. 12/15/20
FG Attempts	9 vs Champion Chris. 12/15/20
FT Made	1 vs Champion Chris. 12/15/20
FT Attempts	2 vs Champion Chris. 12/15/20

Miscellaneous Statistics

	2020-21	Career
Games with 10+ Points	0	0
Games with 10+ Rebounds	1	1
Double-Doubles	0	0
Games with 35+ Minutes	0	0
Games with 20+ Points	0	0
Games with 25+ Points	0	0
Games Leading A-State in Points	0	0
Games Leading A-State in Rebounds	1	1


**Trinitee
JACKSON**
FORWARD
23

 Junior • 6-3
Hopkinsville, Ky.
Christian County HS

2020-21 Game-by-Game

Opponent	Min.	FG-A	3PT-A	FT-A	O-D-T	PF	Asst.	TO	Blk.	Stl.	Pts.
ARK-PINE BLUFF	*14	2-3	0-0	6-9	2-4-6	2	1	0	0	1	10
SIU-EDWARDSVILLE	*10	2-3	0-0	1-3	0-4-4	2	0	1	0	2	5
WILLIAMS BAPTIST	11	5-7	0-0	2-5	0-2-2	2	0	1	0	1	12
CHAMPION CHRISTIAN	*7	0-0	0-0	0-1	1-1-2	0	2	1	0	1	4
CHAMPION CHRISTIAN	*12	6-11	0-0	1-3	6-1-7	2	0	0	1	0	13
ULM*					--POSTPONED--						
ULM*					--POSTPONED--						
CENTRAL BAPTIST	*16	3-5	0-0	0-1	1-3-4	3	0	1	1	0	6
TEXAS STATE*	*16	2-4	0-0	3-5	2-8-10	3	0	2	0	1	7
TEXAS STATE*	*16	2-4	0-0	4-6	1-2-3	3	0	1	0	0	8
at ULM*	*23	3-7	0-0	0-0	3-7-10	2	1	3	0	1	6
at ULM*	*22	2-9	0-0	3-6	3-3-6	4	0	2	1	0	7
LOUISIANA*											
LOUISIANA*											
at UT Arlington*											
at UT Arlington*											
at Louisiana*											
at Louisiana*											
LITTLE ROCK*											
at Little Rock*											
at Texas State*											
at Texas State*											
UT ARLINGTON*											
UT ARLINGTON*											

* — Indicates Game Started

CAREER STATISTICS & SINGLE-GAME HIGHS

SEASON/TEAM	GP-GS	MIN	AVG	FG-FGA	FG%	3FG-FGA	3FG%	FT-FTA	FT%	OFF	DEF	TOT	AVG	PF	FO	AST	TO	BLK	STL	PTS	AVG
2018-19 ASU	30-0	293/9.8	43-97	.443	0-0	.000	31-60	.517	44	39	83	2.8	44-0	7	31	4	7	117	3.9		
2019-20 ASU	28-0	190/6.8	29-90	.322	0-0	.000	25-50	.500	37	43	80	2.9	31-0	3	32	6	9	83	3.0		
2020-21 ASU	10-9	148/14.8	29-56	.518	0-0	.000	20-39	.513	19	35	54	5.4	23-0	4	12	3	7	78	7.8		
TOTAL	68-9	632/9.3	101-243	.416	0-0	.000	76-149	.510	100	117	217	3.2	98-0	14	75	13	23	278	4.1		

Single Game Highs

Statistic	Value
Points	13 vs Champion Chris. 12/17/20
Rebounds	17 vs Central Baptist 11/06/19
Assists	2 at UT Arlington 02/16/19, vs Champion Chris. 12/15/20
Steals	2 vs Little Rock 02/23/19, at UT Arlington 01/02/20, vs SIUE 12/02/20
Blocks	1 13 times
FG Made	6 vs Champion Chris. 12/17/20
FG Attempts	11 vs Champion Chris. 12/17/20
FT Made	6 vs Ark.-Pine Bluff 11/27/20
FT Attempts	11 vs Central Baptist 11/06/19

Miscellaneous Statistics

	2020-21	Career
Games with 10+ Points	3	6
Games with 10+ Rebounds	2	3
Double-Doubles	0	1
Games with 35+ Minutes	0	0
Games with 20+ Points	0	0
Games with 25+ Points	0	0
Games Leading A-State in Points	1	2
Games Leading A-State in Rebounds	2	7



Karolina SZYDLOWSKA

FORWARD
24

Junior • 6-0

Wroclaw, Poland

Seward County CC [Kan.]

2020-21 Game-by-Game

Opponent	Min.	FG-A	3PT-A	FT-A	O-D-T	PF	Ass.	TO	Blk.	Stl.	Pts.
ARK-PINE BLUFF	*28	4-11	2-9	0-0	2-5-7	3	0	1	1	1	10
SIU-EDWARDSVILLE	*16	0-1	0-1	0-0	0-2-2	1	1	2	0	1	0
WILLIAMS BAPTIST	*13	3-4	0-1	2-4	3-1-4	1	1	0	1	0	8
CHAMPION CHRISTIAN	*18	3-11	0-3	0-0	5-3-8	1	0	0	0	1	6
CHAMPION CHRISTIAN	15	2-6	0-1	0-0	1-1-2	1	1	1	1	0	4
ULM*		---POSTPONED---									
ULM*		---POSTPONED---									
CENTRAL BAPTIST	*21	3-10	1-3	3-4	3-8-11	3	0	0	3	0	10
TEXAS STATE*	23	1-7	1-3	1-2	1-1-2	1	0	2	2	0	4
TEXAS STATE*	25	4-7	3-5	0-0	1-2-3	2	1	0	0	1	11
at ULM*	20	1-4	0-2	2-2	1-1-2	2	0	2	2	1	4
at ULM*	21	3-6	1-3	0-0	1-6-7	1	3	1	1	3	7
LOUISIANA*											
LOUISIANA*											
at UT Arlington*											
at UT Arlington*											
at Louisiana*											
at Louisiana*											
LITTLE ROCK*											
at Little Rock*											
at Texas State*											
at Texas State*											
UT ARLINGTON*											
UT ARLINGTON*											

* — Indicates Game Started

CAREER STATISTICS & SINGLE-GAME HIGHS

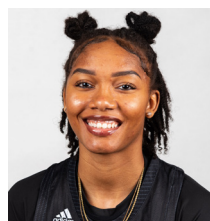
			Field Goals		3-Point		F-Throws		Rebounds								Scoring					
SEASON	TEAM	GP-GS	MIN	AVG	FG-FGA	FG%	3FG-FGA	3FG%	FT-FTA	FT%	OFF	DEF	TOT	AVG	PF	FO	AST	TO	BLK	STL	PTS	AVG
2020-21	ASU	10-5	201	20.1	24-67	.358	8-31	.258	8-12	.667	18	30	48	4.8	16-0	7	9	9	8	64	6.4	
TOTAL		10-5	201	20.1	24-67	.358	8-31	.258	8-12	.667	18	30	48	4.8	16-0	7	9	9	8	64	6.4	

Single Game Highs

Statistic	Value
Points	11 vs Texas St. 01/09/21
Rebounds	11 vs Central Baptist 01/04/21
Assists	3 at La.-Monroe 01/16/21
Steals	3 at La.-Monroe 01/16/21
Blocks	3 vs Central Baptist 01/04/21
FG Made	4 vs Ark.-Pine Bluff 11/27/20, vs Texas St. 01/09/21
FG Attempts	11 vs Ark.-Pine Bluff 11/27/20, vs Champion Chris. 12/15/20
3FG Made	3 vs Texas St. 01/09/21
3FG Attempts	9 vs Ark.-Pine Bluff 11/27/20
FT Made	3 vs Central Baptist 01/04/21
FT Attempts	4 vs Williams Baptist 12/11/20, vs Central Baptist 01/04/21

Miscellaneous Statistics

	2020-21	Career
Games with 10+ Points	3	3
Games with 10+ Rebounds	1	1
Double-Doubles	1	1
Games with 35+ Minutes	0	0
Games with 20+ Points	0	0
Games with 25+ Points	0	0
Games Leading A-State in Points	0	0
Games Leading A-State in Rebounds	1	1



Kayla WILLIAMS

FORWARD
25

Redshirt Senior • 6-1

Memphis, Tenn.

Central HS

Wichita State

2020-21 Game-by-Game

Opponent	Min.	FG-A	3PT-A	FT-A	O-D-T	PF	Ass.	TO	Blk.	Stl.	Pts.
ARK-PINE BLUFF	0+	0-1	0-1	0-0	0-0-0	0	0	0	0	0	0
SIU-EDWARDSVILLE	1	0-0	0-0	0-0	0-0-0	0	0	0	0	0	0
WILLIAMS BAPTIST	10	2-4	1-1	0-0	1-0-1	0	2	1	0	1	5
CHAMPION CHRISTIAN	16	1-3	1-2	4-4	1-5-6	2	2	1	1	1	7
CHAMPION CHRISTIAN	14	3-6	1-3	0-0	0-4-4	0	0	1	0	0	7
ULM*		---POSTPONED---									
ULM*		---POSTPONED---									
CENTRAL BAPTIST	15	2-5	0-2	0-0	1-2-3	2	0	0	0	1	4
TEXAS STATE*	10	0-3	0-2	0-0	2-2-4	0	0	0	0	0	0
TEXAS STATE*	0+	0-0	0-0	0-0	0-0-0	0	0	0	0	0	0
at ULM*	1	0-0	0-0	0-0	0-0-0	0	0	0	0	0	0
at ULM*		---DID NOT PLAY---									
LOUISIANA*											
LOUISIANA*											
at UT Arlington*											
at UT Arlington*											
at Louisiana*											
at Louisiana*											
LITTLE ROCK*											
at Little Rock*											
at Texas State*											
at Texas State*											
UT ARLINGTON*											
UT ARLINGTON*											

* — Indicates Game Started

CAREER STATISTICS & SINGLE-GAME HIGHS

		Field Goals				3-Point		F-Throws		Rebounds		PF-FO		AST		BLK		STL		Scoring		
SEASON	TEAM	GP-GS	MIN	AVG	FG-FGA	FG%	3FG-FGA	3FG%	FT-FTA	FT%	OFF	DEF	TOT	AVG	PF	FO	AST	TO	BLK	STL	PTS	AVG
2016-17	WSU	29-15	371/12.8	36-108	.333	22-67	.328	4-5	.800	6	17	23	0.8	28-0	13	18	5	5	98	3.4		
2018-19	ASU	7-2	105/15.0	13-28	.464	9-19	.474	6-7	.857	0	6	6	0.9	10-0	9	7	0	3	41	5.9		
2019-20	ASU	27-13	384/14.2	28-96	.292	17-59	.288	5-10	.500	4	44	48	1.8	26-0	12	31	7	9	78	2.9		
2020-21	ASU	9-0	67/7.4	8-22	.364	3-11	.273	4-4	1.000	5	13	18	2.0	4-0	4	3	1	3	23	2.6		
TOTAL FOR ASU		43-15	556/12.9	49-146	.336	29-89	.326	15-21	.714	9	63	72	1.7	40-0	25	41	8	15	142	3.3		
TOTAL		72-30	927/12.9	85-254	.335	51-156	.327	19-26	.731	15	80	95	1.3	68-0	38	59	13	20	240	3.3		

Single Game Highs

Statistic	Value
Points	17 vs Kansas City 11/15/16
Rebounds	6 vs Champion Chris. 12/15/20
Assists	4 vs Appalachian St. 01/16/20
Steals	3 at Texas St. 01/04/20
Blocks	3 vs Central Baptist 11/06/19
FG Made	6 vs Kansas City 11/15/16
FG Attempts	11 at Texas A&M 11/23/18, vs Kansas City 11/15/16
3FG Made	4 vs Memphis 11/12/18, vs Kansas City 11/15/16
3FG Attempts	9 vs Kansas City 11/15/16
FT Made	4 vs Ark.-Pine Bluff 12/09/19, vs Champion Chris. 12/15/20
FT Attempts	6 vs Ark.-Pine Bluff 12/09/19

Miscellaneous Statistics

	2020-21	Career
Games with 10+ Points	0	6
Games with 10+ Rebounds	0	0
Double-Doubles	0	0
Games with 35+ Minutes	0	0
Games with 20+ Points	0	0
Games with 25+ Points	0	0
Games Leading A-State in Points	0	2
Games Leading A-State in Rebounds	0	0



Peyton MARTIN

FORWARD
35

Senior • 5-11
Pine Bluff, Ark.
Watson Chapel HS

2020-21 Game-by-Game

Opponent	Min.	FG-A	3PT-A	FT-A	O-D-T	PF	Ast.	TO	Blk.	Stl.	Pts.
ARK.-PINE BLUFF	14	3-4	0-0	0-0	0-1-1	4	0	0	0	0	6
SIU-EDWARDSVILLE	29	11-17	0-0	6-8	3-5-8	2	0	2	0	0	28
WILLIAMS BAPTIST	*14	2-9	0-0	0-0	2-7-9	1	2	2	2	0	4
CHAMPION CHRISTIAN	5	2-2	0-0	0-0	0-1-1	0	0	1	0	0	4
CHAMPION CHRISTIAN	13	5-9	0-1	0-2	3-2-5	3	3	3	0	2	10
ULM*	---POSTPONED---										
ULM*	---POSTPONED---										
CENTRAL BAPTIST	21	9-18	0-1	1-1	4-2-6	1	0	0	2	0	19
TEXAS STATE*	15	1-2	0-0	2-4	2-3-5	5	0	0	3	0	4
TEXAS STATE*	*30	9-19	0-0	0-0	7-1-8	3	1	2	0	0	18
at ULM*	*24	1-6	0-0	4-4	2-1-3	0	0	3	0	1	6
at ULM*	*26	2-8	0-0	0-0	4-5-9	1	0	2	0	0	4
LOUISIANA*											
LOUISIANA*											
at UT Arlington*											
at UT Arlington*											
at Louisiana*											
at Louisiana*											
LITTLE ROCK*											
at Little Rock*											
at Texas State*											
at Texas State*											
UT ARLINGTON*											
UT ARLINGTON*											

* — Indicates Game Started

CAREER STATISTICS & SINGLE-GAME HIGHS

SEASON/TEAM	GP-GS	MIN/AVG	Field Goals		3-Point		F-Throws		Rebounds		PF-FO		AST		BLK STL		Scoring		
			FG-FGA	FG%	3FG-FGA	3FG%	FT-FTA	FT%	OFF	DEF	TOT	AVG	PF	FO	AST	TO	BLK	STL	PTS
2017-18 ASU	18-2	248/13.8	37-96	.385	0-6	.000	36-52	.692	31	44	75	4.2	21-0	10	28	7	9	110	6.1
2018-19 ASU	30-30	850/28.3	151-341	.443	0-1	.000	110-166	.663	75	114	189	6.3	92-2	15	59	18	29	412	13.7
2019-20 ASU	28-26	754/26.9	130-277	.469	2-17	.118	89-137	.650	69	93	162	5.8	81-4	21	63	14	37	351	12.5
2020-21 ASU	10-4	190/19.0	45-94	.479	0-2	.000	13-19	.684	27	28	55	5.5	20-1	6	15	7	3	103	10.3
TOTAL	86-62	2042/23.7	363-808	.449	2-26	.077	248-374	.663	202	279	481	5.6	214-7	52	165	46	78	976	11.3

Single Game Highs

Statistic	Value
Points	28 vs SIUE 12/02/20
Rebounds	14 at Tulsa 11/09/19
Assists	4 at Coastal Carolina 01/26/19
Steals	5 vs Ark.-Pine Bluff 12/09/19
Blocks	3 vs Texas St. 01/08/21
FG Made	11 at UT Martin 11/17/18, vs SIUE 12/02/20
FG Attempts	19 vs Texas St. 01/09/21
3FG Made	1 vs Little Rock 02/28/20, vs Southeast Mo. St. 11/13/19
3FG Attempts	4 vs Coastal Carolina 01/25/20
FT Made	10 vs Memphis 11/12/18
FT Attempts	12 vs Memphis 11/12/18, vs Louisiana 01/03/19

Miscellaneous Statistics

	2020-21	Career
Games with 10+ Points	4	51
Games with 10+ Rebounds	0	8
Double-Doubles	0	6
Games with 35+ Minutes	0	5
Games with 20+ Points	1	11
Games with 25+ Points	1	4
Games Leading A-State in Points	3	25
Games Leading A-State in Rebounds	3	29

2020-21 STATISTICS



2020-21 Arkansas St. Women's Basketball Combined Team Statistics All games

Page 1/1
as of Jan 17, 2021

Game Records

Record	Overall	Home	Away	Neutral
ALL GAMES	9-1	7-1	2-0	0-0
CONFERENCE	4-0	2-0	2-0	0-0
NON-CONFERENCE	5-1	5-1	0-0	0-0

Score by Periods

Team	1st	2nd	3rd	4th	OT	TOT
Arkansas St.	193	199	185	180	0	757
Opponents	127	138	138	128	0	531

Team Box Score

No. Player					Total		3-Point		F-Throw		Rebounds													
		GP-GS	MIN	AVG	FG-FGA	FG%	3FG-FGA	3FG%	FT-FTA	FT%	OFF	DEF	TOT	AVG	PF	DQ	A	TO	BLK	STL	PTS	AVG		
1	WASHINGTON, Jireh	10-10	279:24	27.9	46-90	.511	7-22	.318	25-37	.676	9	36	45	4.5	18	0	29	27	0	31	124	12.4		
10	STINSON, Jada	10-7	279:21	27.9	45-109	.413	23-65	.354	6-9	.667	6	31	37	3.7	17	0	31	21	1	18	119	11.9		
35	MARTIN, Peyton	10-4	190:26	19.0	45-94	.479	0-2	.000	13-19	.684	27	28	55	5.5	20	1	6	15	7	3	103	10.3		
3	WALLACE, Morgan	9-9	283:29	31.5	23-55	.418	5-19	.263	31-40	.775	9	39	48	5.3	16	0	34	19	2	13	82	9.1		
23	JACKSON, Trinitee	10-9	147:56	14.8	29-56	.518	0-0	.000	20-39	.513	19	35	54	5.4	23	0	4	12	3	7	78	7.8		
24	SZYDLOWSKA, Karolina	10-5	200:39	20.1	24-67	.358	8-31	.258	8-12	.667	18	30	48	4.8	16	0	7	9	9	8	64	6.4		
4	LOVE, Mya	10-6	188:12	18.8	14-35	.400	5-16	.313	11-20	.550	15	17	32	3.2	28	1	16	13	1	14	44	4.4		
12	HATCHER, Mattie	9-0	87:05	9.7	12-29	.414	8-19	.421	1-2	.500	2	5	7	0.8	10	0	10	8	0	4	33	3.7		
13	ROLDAN, Talia	5-0	48:05	9.6	6-12	.500	0-2	.000	5-6	.833	8	10	18	3.6	2	0	2	5	1	1	17	3.4		
25	WILLIAMS, Kayla	9-0	66:42	7.4	8-22	.364	3-11	.273	4-4	1.000	5	13	18	2.0	4	0	4	3	1	3	23	2.6		
11	DAMES, Victoria	4-0	20:11	5.0	4-7	.571	2-4	.500	0-0	.000	1	1	2	0.5	0	0	1	2	0	0	10	2.5		
2	CANTONE, Hilani	9-0	70:26	7.8	8-19	.421	2-7	.286	4-6	.667	1	2	3	0.3	7	0	12	7	0	6	22	2.4		
21	THIAM, Seynabou	8-0	45:42	5.7	9-19	.474	0-0	.000	1-2	.500	16	16	32	4.0	0	0	1	2	4	3	19	2.4		
5	BROWN, Jordyn	9-0	68:41	7.6	5-17	.294	1-12	.083	4-6	.667	2	14	16	1.8	4	0	6	4	0	3	15	1.7		
14	ERICKSON, Hailee	4-0	23:43	5.9	1-8	.125	1-8	.125	1-2	.500	0	2	2	0.5	2	0	3	1	0	2	4	1.0		
Team											10	15	25					4						
Total		10	2000		279-639	.437	65-218	.298	134-204	.657	148	294	442	44.2	167	2	166	152	29	116	757	75.7		
Opponents		10	2000		199-578	.344	50-223	.224	83-125	.664	101	245	346	34.6	170	4	113	197	17	61	531	53.1		

Team Statistics

	ASU	OPP
Scoring	757	531
Points per game	75.7	53.1
Scoring margin	+22.6	-
Field goals-att	279-639	199-578
Field goal pct	.437	.344
3 point fg-att	65-218	50-223
3-point FG pct	.298	.224
3-pt FG made per game	6.5	5.0
Free throws-att	134-204	83-125
Free throw pct	.657	.664
F-Throws made per game	13.4	8.3
Rebounds	442	346
Rebounds per game	44.2	34.6
Rebounding margin	+9.6	-
Assists	166	113
Assists per game	16.6	11.3
Turnovers	152	197
Turnovers per game	15.2	19.7
Turnover margin	+4.5	-
Assist/turnover ratio	1.1	0.6
Steals	116	61
Steals per game	11.6	6.1
Blocks	29	17
Blocks per game	2.9	1.7
Winning streak	9	-
Home win streak	7	-
Attendance	2390	1383
Home games-Avg/Game	8-299	2-692
Neutral site-Avg/Game	-	0-0

Team Results

Date	Opponent		Score	Att.
11/27/2020	Ark.-Pine Bluff	L	68-85	422
12/02/2020	SIUE	W	80-73	338
12/11/2020	Williams Baptist	W	96-46	541
12/15/2020	Champion Chris.	W	93-49	207
12/17/2020	Champion Chris.	W	88-38	189
01/04/2021	Central Baptist	W	85-39	172
01/08/2021	Texas St.	W	54-53	218
01/09/2021	Texas St.	W	70-54	303
01/15/2021	at La.-Monroe	W	64-50	665
01/16/2021	at La.-Monroe	W	59-44	718

2020-21 STATISTICS (SUN BELT GAMES)



2020-21 Arkansas St. Women's Basketball Combined Team Statistics In Conference games

Page 1/1
as of Jan 17, 2021

Game Records

Record	Overall	Home	Away	Neutral
ALL GAMES	4-0	2-0	2-0	0-0
CONFERENCE	4-0	2-0	2-0	0-0
NON-CONFERENCE	0-0	0-0	0-0	0-0

Score by Periods

Team	1st	2nd	3rd	4th	OT	TOT
Arkansas St.	70	58	58	61	0	247
Opponents	57	50	53	41	0	201

Team Box Score

No. Player					Total		3-Point		F-Throw		Rebounds													
		GP-GS	MIN	AVG	FG-FGA	FG%	3FG-FGA	3FG%	FT-FTA	FT%	OFF	DEF	TOT	AVG	PF	DQ	A	TO	BLK	STL	PTS	AVG		
1	WASHINGTON, Jireh	4-4	142:22	35.6	20-45	.444	3-8	.375	20-26	.769	3	18	21	5.3	7	0	8	16	0	10	63	15.8		
10	STINSON, Jada	4-1	121:49	30.5	16-45	.356	9-27	.333	2-5	.400	1	10	11	2.8	8	0	9	12	0	12	43	10.8		
3	WALLACE, Morgan	4-4	148:50	37.2	9-21	.429	3-8	.375	19-23	.826	7	21	28	7.0	7	0	10	11	0	9	40	10.0		
35	MARTIN, Peyton	4-3	94:34	23.6	13-35	.371	0-0	.000	6-8	.750	15	10	25	6.3	9	1	1	7	3	1	32	8.0		
23	JACKSON, Trinitee	4-4	77:58	19.5	9-24	.375	0-0	.000	10-17	.588	9	20	29	7.3	12	0	1	8	1	2	28	7.0		
24	SZYDLOWSKA, Karolina	4-0	89:50	22.5	9-24	.375	5-13	.385	3-4	.750	4	10	14	3.5	6	0	4	5	3	5	26	6.5		
4	LOVE, Mya	4-4	81:05	20.3	4-10	.400	2-5	.400	2-4	.500	4	5	9	2.3	14	1	4	5	0	1	12	3.0		
12	HATCHER, Mattie	4-0	23:31	5.9	1-4	.250	1-3	.333	0-0	.000	0	1	1	0.3	3	0	2	3	0	0	3	0.8		
25	WILLIAMS, Kayla	3-0	11:49	3.9	0-3	.000	0-2	.000	0-0	.000	2	2	4	1.3	0	0	0	0	0	0	0	0.0		
5	BROWN, Jordyn	3-0	01:31	0.5	0-0	.000	0-0	.000	0-0	.000	0	0	0	0.0	0	0	0	0	0	0	0	0.0		
21	THIAM, Seynabou	3-0	01:31	0.5	0-0	.000	0-0	.000	0-0	.000	0	0	0	0.0	0	0	0	0	0	0	0	0.0		
2	CANTONE, Hilani	3-0	05:11	1.7	0-1	.000	0-0	.000	0-0	.000	0	0	0	0.0	3	0	2	0	0	0	0	0.0		
Team											2	5	7				3							
Total		4	800		81-212	.382	23-66	.348	62-87	.713	47	102	149	37.3	69	2	41	70	7	40	247	61.8		
Opponents		4	800		76-211	.360	14-75	.187	35-53	.660	41	89	130	32.5	71	2	48	75	5	30	201	50.3		

Team Statistics

	ASU	OPP
Scoring	247	201
Points per game	61.8	50.3
Scoring margin	+11.5	-
Field goals-att	81-212	76-211
Field goal pct	.382	.360
3 point fg-att	23-66	14-75
3-point FG pct	.348	.187
3-pt FG made per game	5.8	3.5
Free throws-att	62-87	35-53
Free throw pct	.713	.660
F-Throws made per game	15.5	8.8
Rebounds	149	130
Rebounds per game	37.3	32.5
Rebounding margin	+4.8	-
Assists	41	48
Assists per game	10.3	12.0
Turnovers	70	75
Turnovers per game	17.5	18.8
Turnover margin	+1.3	-
Assist/turnover ratio	0.6	0.6
Steals	40	30
Steals per game	10.0	7.5
Blocks	7	5
Blocks per game	1.8	1.3
Winning streak	4	-
Home win streak	2	-
Attendance	521	1383
Home games-Avg/Game	2-261	2-692
Neutral site-Avg/Game	-	0-0

Team Results

Date	Opponent		Score	Att.
01/08/2021	Texas St.	W	54-53	218
01/09/2021	Texas St.	W	70-54	303
01/15/2021	at La.-Monroe	W	64-50	665
01/16/2021	at La.-Monroe	W	59-44	718

2020-21 BOX SCORES

1 Arkansas-Pine Bluff 85, Arkansas State 68
Nov. 27, 2020 • Jonesboro, Ark. • 422

Ark-Pine Bluff Arkansas State

11/27/20 First National Bank Arena, Jonesboro, Ark.

2020-21 Women's Basketball

Game Time: 6:00 PM

Game Duration: 42:20

Attendance: 422

Officials: Stephanie Banksdale, Angel Kent, Joshua Hays

Ark-Pine Bluff - 85

Record: 0-1

NO. Name	Min	FG		3P	FT	Rebounds		Fouls		TP	AS	TO	ST	Blocks	BS	+/-
		M	A	M	A	OR	DR	OT	PF							
5 Trasty Totten	F	30:03	7-10	2-4	1-1	0	7	7	2	3	17	2	0	0	1	14
3 Nissa Sam-Krass	C	26:54	1-2	0-0	2-2	4	6	10	4	2	4	3	4	1	2	0
33 Joyce-Grant	G	31:21	3-13	1-5	9-15	2	4	6	3	10	16	4	1	3	0	2
11 Tyler Pyburn	G	33:00	9-16	5-10	0-0	0	1	1	0	1	23	1	1	1	0	0
24 Kalia Walker	G	09:23	2-5	0-0	0	0	2	2	5	0	4	0	0	0	0	9
44 Maya Peat		07:07	0-1	0-0	0-2	1	3	4	0	2	0	2	0	0	0	2
31 ShiCoriya Orr		32:34	6-11	2-4	0-6	1	5	6	2	4	19	4	1	1	0	0
4 Jazeem Bethea		14:43	0-4	0-1	0-0	2-2	1	1	2	3	1	2	0	5	1	0
25 Kayla Simmons		05:06	0-3	0-0	0-0	0	0	0	0	1	0	0	0	1	1	0
1 Ashlynn Green		06:50	0-1	0-1	0-0	0	0	0	0	2	0	2	1	0	0	6
34 Marquita Cotton		02:59	0-0	0-0	0-0	0	0	1	1	0	0	0	0	0	0	0
Team						3	1	4		0	0					
Totals		26-63	10-26	19-28	12	31	43	22	23	85	16	16	8	3	3	17

Shooting By Period	
1st FG%	4-13 30.8%
3PT%	1-4 25.0%
FT%	10-14 71.4%
2nd FG%	8-16 50.0%
3PT%	4-8 50.0%
FT%	1-2 50%
3rd FG%	9-17 52.9%
3PT%	3-7 42.9%
FT%	3-5 60%
4th FG%	7-17 41.2%
3PT%	2-7 28.6%
FT%	5-7 71.4%
GM FG%	28-63 44.4%
3PT%	10-26 38.5%
FT%	19-28 67.9%
Dead Ball Rebounds: 6-0	

Technical Fouls: NONE

Arkansas State - 68

Record: 0-1

NO. Name	Min	FG		3P	FT	Rebounds		Fouls		TP	AS	TO	ST	Blocks	BS	+/-
		M	A	M	A	OR	DR	OT	PF							
23 Trinite Jackson	F	14:17	2-3	0-0	6-9	2	4	6	2	5	10	1	0	1	0	1
24 Karolina Szydlowska	F	27:46	4-11	2-9	0	2	5	7	1	3	10	1	1	1	0	0
1 Jresh Washington	G	20:57	5-8	1-3	1-2	0	1	1	4	5	12	1	4	0	0	4
3 Jordan Wallace	G	38:01	6-18	1-6	2-3	0	8	8	2	4	15	4	4	2	2	-15
10 Jada Sinsion	G	37:24	3-17	0-7	2-2	2	3	5	1	1	8	6	3	0	0	-14
2 Hilani Cantone		03:58	0-0	0-0	0-0	0	0	0	2	1	0	0	2	0		
4 Mya Love		14:17	0-1	0-1	2-2	1	0	1	2	1	2	0	2	1	0	-7
31 Taylor Martin		14:23	3-4	0-0	0	1	1	4	0	6	0	0	0	0	0	-11
13 Talia Roldan		09:06	0-1	0-0	2-2	2	1	3	1	2	2	0	0	1	0	3
5 Jordyn Brown		06:17	0-1	0-1	0-0	0	0	0	1	2	0	0	0	0	0	-12
21 Seynabou Thiam		03:49	0-1	0-0	0	1	0	1	0	0	0	0	0	1	0	-12
12 Melissie Hitcher		09:21	1-3	1-3	0-0	0	1	1	1	3	0	0	0	0	0	-2
25 Kayla Williams		00:24	0-1	0-1	0-0	0	0	0	0	0	0	0	0	0	0	-2
Team						2	2	4		0	0					
Totals		24-66	5-31	15-20	12	26	38	23	22	68	12	17	6	3	3	-17

Shooting By Period	
1st FG%	6-16 37.5%
3PT%	0-5 0.0%
FT%	8-10 80%
2nd FG%	5-19 26.3%
3PT%	2-12 16.7%
FT%	4-5 80%
3rd FG%	9-17 52.9%
3PT%	2-5 40.0%
FT%	1-1 100%
4th FG%	4-14 28.6%
3PT%	1-9 11.1%
FT%	2-4 50%
GM FG%	24-66 36.4%
3PT%	5-31 16.1%
FT%	15-20 75.0%
Dead Ball Rebounds: 4-0	

Technical Fouls: NONE

UAPB

ASU

Biggest lead

17 (4th 0:29) 4 (1st 8:21)

Best Scoring Run

11 (2nd 8:13) 8 (1st 3:08)

Lead Changes

3

Times Tied

0

Time with Lead

32:39 06:05

Points from Turnovers

18 21

Paint

24 36

Second Chance

4 8

Fast Breaks

9 14

Bench

21 13

Period by Period Scoring

1st2nd3rd4thTOT


UAPB

19 21 24 21 85

ASU

20 16 21 11 68

2 Arkansas State 80, SIU Edwardsville 73
Dec. 2, 2020 • Jonesboro, Ark. • 338



Official Basketball Score Sheet

SIUE at Arkansas State

12/20/20 Final Game Duration: 1:56

2020-21 Women's Basketball

Game Date: 12/20/20

Game Location: Jonesboro, Ark.

Attendance: 338

Officials: Troy Winders, Rochelle Bennett, Jessica Forthner

SIUE - 73

Record: 1-1

NO. Name	Min	FG M-A	3P M-A	FT M-A	Rebounds OR DR	Fouls PF	FO	TP	AS	TO	ST	Blocks BS	+/-	
5 Ajulu Thatha	F 33:17	4-10	0-2	1-2	1 7	8 4	3	9	3	3	3	1 0 - 5	1 st FG%: 40.0	
12 Mikayla Kinnard	F 25:08	8-16	1-2	7-7	1 3	4 2	5	24	4	4	0 0 - 1	3PT%: 13.3		
23 Madison Webb	F 17:59	2-4	0-0	0-0	2 2	4 4	0	4	0	4	0 1 0 - 14	FT%: 0-0		
15 Masyn McWilliams	G 12:10	0-2	0-2	0-0	0 1	1 0	0	0	0	0	1 0 0 - 4	2 nd FG%: 7-15		
23 Allie Troeckler	G 22:52	4-4	0-0	0-0	0 3	3 2	0	8	2	2	0 0 - 8	3PT%: 0-4		
11 Mikia Keith	19:48	1-3	0-1	0-0	1 2	3 2	2	2	4	1	1 0 - 6	FT%: 2-2		
35 Mikala Hall	22:29	5-10	1-4	0-2	0 3	3 1	1	11	1	2	2 0 - 9	3 rd FG%: 7-19		
44 Tori Hamilton	12:04	3-3	0-0	0-0	2 2	2 2	2	4	0	0	1 2 0 - 1	3PT%: 0-3		
2 Prima Chellis	20:14	3-7	0-1	2-3	3 2	5 1	3	8	1	1	2 0 1 - 4	FT%: 2-3		
4 Tori Handley	08:40	1-3	1-3	0-0	0 0	0 0	2	3	0	1	0 0 - 5	4 th FG%: 9-18		
25 Zaria Whitlock	00:19	0-0	0-0	0-0	0 0	0 0	0	0	0	0	0 0 - 0	3PT%: 2-5		
Team														
Totals														

Technical Fouls: NONE

Shooting By Period

1 st	2 nd	3 rd	4 th	TOT
FG%: 40.0	50.0%	50.0%	50.0%	46.7%
3PT%: 13.3	0.0%	0.0%	0.0%	0.0%
FT%: 0-0	0%	0%	0%	0%

Arkansas State - 80

Record: 1-1

NO. Name	Min	FG M-A	3P M-A	FT M-A	Rebounds OR DR	Fouls PF	FO	TP	AS	TO	ST	Blocks BS	+/-	
23 Trintone Jackson	F 09:40	2-3	0-0	1-3	0 4	4 2	2	5	0	1	2	0 0 - 1	1 st FG%: 6-16	
24 Karolina Szydlowska	F 15:52	0-1	0-1	0-0	0 2	2 1	0	1	0	1	2	1 0 - 0	3PT%: 2-4	
1 Jireh Wasyliuk	G 38:24	4-8	0-2	2-6	1 5	6 4		10	6	5	7 0 0 - 7	2 nd FG%: 9-14		
3 Morgan Wallace	G 39:11	2-11	1-4	4-6	1 3	4 3	5	9	8	3	1 0 2 - 9	3PT%: 3-6		
10 Jada Stinson	G 38:02	8-9	6-7	2-2	0 4	4 4	3	32	24	0	4 2 0 - 11	FT%: 4-7		
35 Peyton Martin	29:07	11-17	0-1	6-8	3 5	8 2	6	28	0	2	0 0 1 - 7	3 rd FG%: 7-15		
4 Myra Love	23:32	2-5	0-1	0-2	0 1	1 3	1	4	5	3	1 1 1 - 4	3PT%: 0-1		
2 Hilani Cantone	08:19	0-0	0-0	0-0	0 0	0 1	0	0	0	0	1 0 0 - 2	FT%: 3-10		
13 Talia Roldan	01:13	0-0	0-0	0-0	0 0	0 0	0	0	0	0	0 0 - 2	4 th FG%: 7-10		
25 Kayla Williams	00:49	0-0	0-0	0-0	0 0	0 0	0	0	0	0	0 0 - 0	3PT%: 2-3		
5 Jordyn Brown	00:51	0-1	0-1	0-0	0 0	0 0	0	0	0	0	0 0 - 0	FT%: 6-8		
Team														
Totals														

Technical Fouls: NONE

Shooting By Period

1 st	2 nd	3 rd	4 th	TOT
FG%: 29-55	52.7%			
3PT%: 7-16	43.8%			
FT%: 15-27	55.6%			


Dead Ball Rebounds: 4-0

	SIUE	ASU
Best lead	2 (1 st 2:13)	16 (4 th 2:08)
Best Scoring Run	6 (2 nd 4:15)	9 (4 th 4:32)
Lead Changes	6	
Times Tied	3	
Time with Lead	01:26	35:38

Points from Turnovers	SIUE	ASU
Points	12	21
Paint	48	40
Second Chance	6	14
Fast Breaks	18	20
Bench	28	32

Period by Period Scoring	1st	2nd	3rd	4th	TOT
SIUE	15	16	16	26	73
ASU	16	25	17	22	80

3 **Arkansas State 96, Williams Baptist 46**
Dec. 11, 2020 • Jonesboro, Ark. • 541



Official Basketball Box Score - Final

Williams Baptist at Arkansas State

12/11/20 First National Bank Arena, Jonesboro, Ark.

2020-21 Women's Basketball

Game Duration: 5:00 PM

Attendance: 541

Williams Baptist - 46

Record: 5-2

Opponents: Mossy Brooks, Troy Winders, Troy Miles

NO. Name	Min	FG M/A	3P M/A	FT M/A	Rebounds OR DR TOT	Fouls PF FT	TP	AS	TO	ST	Blocks BS BA	+/-
0 Tasia Bland	G 22:58	5-5	0-0	0-0	2 2 4	3 0 0	0	0	0	0	2 31	1st FG% 5-16 31.3%
1 Taylor Freeman	G 21:09	5-15	1-4	0-0	1 4 5	1 4 11	2	1	5	1	0 0	3rd FG% 3-8 37.5%
11 Ashlyn Ellis	G 21:25	3-5	0-1	0-0	0 3 3	0 3 0	6	3	2	0	0 -25	FT% 0-0 0%
24 Cassidy Clabey	G 28:57	1-7	0-3	0-0	1 1 2	2 1 2	0	2	2	2 1	1 -33	2nd FG% 5-17 29.4%
33 Kelsey Abney	G 22:27	3-6	1-2	0-0	1 1 2	2 1 7	0	1	0	0 0	-34	3PT% 0-2 0.0%
2 Ressa Hampton	A 24:29	2-7	2-5	0-0	1 1 2	1 0 6	2	5	0	0 0	-27	FT% 2-2 100%
25 Kaitlyn Thomas	A 20:43	2-9	0-1	1-1	0 6 6	5 2 5	0	1	0	0 0	-28	3rd FG% 7-17 41.2%
4 Harley Thomason	A 20:48	2-9	0-4	2-2	0 8 8	1 1 6	2	3	0	0 2	-19	FT% 1-4 25.0%
14 Lotti Hoffman	A 17:04	1-2	1-2	0-0	0 1 1	2 2 3	0	0	1	0 0	-27	4th FG% 2-15 13.3%
Team					0 1 1	0 0 0						3PT% 1-8 12.5%
Totals		19-65	5-22	3-3	6 28 34	17 11 46	9	20	3	1 5	5-50	FT% 1-1 100%

Technical Fouls: NONE

Arkansas State - 96

Record: 2-1

Shooting By Period

1st FG% 7-18 38.9%

3PT% 2-4 50.0%

FT% 4-5 80%

2nd FG% 9-18 50.0%

3PT% 1-6 16.7%

FT% 5-10 50%

3rd FG% 10-22 45.5%

3PT% 2-6 33.3%

FT% 4-5 80%

4th FG% 11-15 73.3%

3PT% 1-4 25.0%

FT% 3-6 50%

GM FG% 37-73 50.7%

3PT% 6-20 30.0%

FT% 16-26 61.5%

NO. Name	Min	FG M/A	3P M/A	FT M/A	Rebounds OR DR TOT	Fouls PF FT	TP	AS	TO	ST	Blocks BS BA	+/-
24 Karolina Szydziowska	F 12:57	3-4	0-1	2-4	3 1 4	1 2 8	1	0	1	0	1 21	1st FG% 7-18 38.9%
35 Peyton Martin	F 13:56	2-9	0-0	0-0	2 7 9	1 0 4	2	2	0	0 0	19	3PT% 2-4 50.0%
1 Jireh Washington	G 25:25	5-10	0-2	0-1	2 2 4	1 2 10	5	1	5	0 0	-41	FT% 4-5 80%
3 Morgan Wallace	G 26:23	2-4	0-1	6-8	0 4 4	1 4 10	5	1	1	0 0	24	2nd FG% 9-18 50.0%
14 Jada Stinson	G 29:34	9-14	3-7	0-0	0 4 4	0 0 12	3	2	2	0 0	34	3PT% 1-6 16.7%
4 Mya Love	11:06	0-3	0-1	2-2	3 3 6	2 1 2	1	0	2	0 1	13	FT% 5-10 50%
23 Trinitie Jackson	11:11	5-7	0-0	2-5	0 2 2	2 3 12	0	1	1	0 0	11	3rd FG% 10-22 45.5%
2 Hilani Cantone	06:48	1-2	0-1	0-0	0 0 0	0 0 0	2	1	0	0 0	-4	3PT% 2-6 33.3%
13 Talia Roldan	10:34	1-3	0-2	1-2	6 8 8	1 1 3	0	1	0	1 0	23	FT% 4-5 80%
5 Jordyn Brown	14:22	1-3	0-2	2-2	0 0 0	1 1 4	1	0	0	0 0	15	4th FG% 11-15 73.3%
21 Seynabou Thiam	07:51	0-0	0-0	0-0	0 4 0	0 0 4	0	0	0	0 1	0 7	3PT% 1-4 25.0%
12 Mattie Hatcher	12:08	3-5	2-2	1-2	1 3 3	0 1 9	4	1	0	0 0	18	FT% 3-6 50%
25 Kayla Williams	10:05	2-4	1-1	0-0	1 0 1	0 1 5	2	1	1	0 0	16	GM FG% 37-73 50.7%
14 Hallee Erickson	04:39	0-0	0-0	0-0	1 1 2	0 0 1	0	1	0	1 0	0 8	3PT% 6-20 30.0%
11 Victoria Dames	03:01	1-1	0-0	0-0	0 0 0	0 0 0	2	0	0	0 0	4	FT% 16-26 61.5%
Team					0 2 2	0 0 0						Dead Ball Rebounds: 3 0
Totals		37-73	6-20	16-26	15 40 55	11 17 96	26	10	13	5 1	50	

Technical Fouls: NONE

Biggest lead	WBU		ASU	Points from Turnovers	WBU ASU	2 25	Period by Period Scoring			
	3 (1st 9:08)	50 (4th 0:36)	3				1st	2nd	3rd	4th
Best Scoring Run	6 (2nd 3:15)		20 (4th 3:01)	Paint	22 58		WBU 13 12 15 6 46			
Lead Changes	3		3	Second Chance	2 14		ASU 20 26 26 96			
Times Tied	1		1	Fast Breaks	7 21					
Time with Lead	02:49	36:03	36:03	Bench	20 43					

4 Arkansas State 93, Champion Christian 49
Dec. 15, 2020 • Jonesboro, Ark. • 207

Champion Christian at Arkansas State
12/15/20 First National Bank Arena, Jonesboro, Ark.
2020-21 Women's Basketball

Officials: Aaron Brooks, Rhynda Seales, Mariah Vidal
Game Time: 6:00 PM
Game Duration: 2:57
Attendance: 207

Champion Christian - 49

Record: 3-2

NO.	Name	Min	FG	M-A	FT	M-A	Rebounds	OR	DR	TO	PF	Fouls	TP	AS	TO	ST	Blocks	BS	BA	+/-	
2	Tamara Manning	G 31:57	1-10	0-5	1-1	0	1	1	2	3	3	6	4	0	0	0	0	0	0	-29	
11	Destiny Gonzales	G 25:03	6-15	3-8	3-3	0	6	6	4	2	18	0	0	0	1	0	0	0	0	-17	
12	Lucy Parize	G 20:53	1-6	1-4	0-0	2	4	6	1	0	3	0	0	1	0	0	0	0	0	-27	
20	Skylia Bairstner	G 17:15	0-6	0-3	0-0	1	0	1	2	0	0	2	1	0	0	0	0	0	0	-28	
24	T'kira Fuller	G 19:34	0-3	0-1	0-0	0	0	0	0	1	0	1	0	1	1	1	0	0	0	-37	
13	Justys Irish-Holmes	17:08	3-7	2-5	0-0	1	2	3	1	0	8	1	4	3	0	0	0	0	0	-15	
22	Haria Mendoza	19:35	3-7	2-4	0-0	1	1	1	1	0	10	1	1	1	1	0	0	0	0	-6	
5	Janyia Gilliam	18:18	2-2	1-1	0-0	0	3	3	2	3	5	0	3	2	2	0	0	0	0	-11	
10	Jeralyn Harty	10:02	1-2	0-0	0-0	0	0	0	0	0	2	0	0	0	0	0	0	0	0	-17	
15	Avery Reichert	08:25	0-1	0-1	0-0	1	0	1	2	0	0	0	5	0	0	0	0	0	0	-17	
23	Katelyn Gipson	10:50	0-1	0-0	0-0	1	0	1	0	0	0	0	1	0	0	0	0	0	0	-16	
Team							1	3	4		0	0									
Totals			17-60	9-32	6-6	7	20	27	15	9	49	13	21	8	0	2	-44				

Technical Fouls: NONE

Shooting By Period

1st FG% 3-17 17.6%
3PT% 1-8 12.5%
FT% 3-3 100%
2nd FG% 3-12 25.0%
3PT% 3-9 33.3%
FT% 2-2 100%
3rd FG% 5-15 33.3%
3PT% 3-8 37.5%
FT% 1-1 100%
4th FG% 6-16 37.5%
3PT% 2-7 28.6%
FT% 0-0 0%
GM FG% 17-60 28.3%
3PT% 9-32 28.1%
FT% 6-6 100.0%

Arkansas State - 93

Record: 3-1

NO.	Name	Min	FG	M-A	FT	M-A	Rebounds	OR	DR	TO	PF	Fouls	TP	AS	TO	ST	Blocks	BS	BA	+/-	
23	Trintee Jackson	F 06:45	2-3	0-0	0-1	1	1	2	0	1	4	2	1	1	0	0	0	0	0	37	
24	Karolina Szydlowska	F 17:31	3-11	0-3	0-0	5	3	8	1	3	6	0	0	0	1	0	0	0	0	31	
1	Jreh Washington	G 09:39	2-3	0-1	0-0	0	2	2	1	0	4	2	0	2	0	0	0	0	0	21	
3	Morgan Wallace	G 06:59	1-1	0-0	0-0	1	1	2	0	0	2	3	0	0	0	0	0	0	0	21	
10	Jada Stinson	G 06:59	5-7	2-4	0-0	0	0	0	0	0	12	1	0	2	0	0	0	0	0	21	
4	Myia Love	15:19	2-5	1-2	1-4	2	3	5	0	2	6	1	1	3	0	0	0	0	0	16	
12	Mattie Hatcher	11:46	2-7	0-3	0-0	0	1	1	4	1	4	0	2	0	0	0	0	0	0	7	
14	Talia Roldan	18:42	4-5	0-0	0	2	3	5	0	8	2	3	0	0	0	0	0	0	0	24	
35	Peyton Martin	05:17	2-2	0-0	0-0	0	1	1	0	0	4	0	1	0	0	0	0	0	0	7	
2	Hilani Cantone	22:54	4-8	1-4	1-2	1	0	1	0	1	10	5	3	2	0	0	0	0	0	27	
5	Jordyn Brown	23:20	3-8	1-5	2-4	1	4	5	1	2	9	2	1	3	0	0	0	0	0	20	
25	Kayla Williams	15:49	1-3	1-2	4-4	1	5	6	2	2	7	2	1	1	1	0	0	0	0	7	
21	Seynabou Thiam	19:21	4-9	0-0	1-2	11	7	18	0	2	9	0	0	1	1	1	0	0	0	1	
11	Victoria Dames	10:29	2-3	1-2	0-0	1	1	2	0	0	5	1	2	0	0	0	0	0	0	6	
14	Halee Erickson	09:10	1-5	1-5	0-0	0	0	0	0	1	3	0	1	1	1	0	0	0	0	5	
Team							1	2	9		0	0	0	0	0	0	0	0	0	0	
Totals			38-80	8-31	9-17	27	34	61	9	15	93	21	17	17	0	2	44				

Technical Fouls: NONE

Dead Ball Rebounds: 3, 1

	CCC	ASU	Points from Turnovers	CCC	ASU	Period by Period Scoring
Biggest lead	0 (1 st 10:00)	44 (4 th 1:36)	8	21		1st2nd3rd4thT
Best Scoring Run	11(3 rd 20:29)	25(2 nd 4:52)	12	56		CCC 10 11 14 14 49
Lead Changes	0	0	2	21		ASU 21 29 18 25 93
Times Tied	0	0	2	16		
Time with Lead	00:00	39:45	25	65		

2020-21 BOX SCORES

5

Arkansas State 88, Champion Christian 38

Dec. 17, 2020 • Jonesboro, Ark. • 189

Official Basketball Box Score - Final														
Champion Christian at Arkansas State														
12/17/20 First National Bank Arena, Jonesboro, Ark.														
2020-21 Women's Basketball														
Officials: Jessica Fortner, Randy Robertson, Scott Korman														
Game Time: 6:00 PM														
Game Duration: 1:50														
Attendance: 189														
Champion Christian - 38														
Record: 6-2														
NO. Name	Min	FG	3P	FT	Rebounds	Fouls	TP	AS	TO	ST	Blocks	BS	BA	+/
		M-A	M-A	M-A	OR DR TOT	PF FD								
2 Tamara Manning	G 37:14	2-15	0-5	3-8	0 4 4	2 4 7	3	7	1	0	1	0	1	-40
11 Destiny Gonzales	G 27:42	3-8	2-3	4-4	2 6 8	4 6 12	0	6	0	0	0	0	0	-33
12 Lucy Parson	G 21:09	0-3	0-0	0-0	1 2 3	2 3 0	0	0	1	0	0	0	0	-32
20 Skyla Bainister	G 18:55	2-3	0-1	0-0	0 0 0	2 1 4	0	7	0	0	0	0	0	-24
24 TKira Fuller	G 12:54	1-5	0-1	2-2	3 2 5	1 3 4	0	2	0	0	0	0	1	-21
22 Harria Mendoza	22:36	2-9	0-2	0-0	2 3 5	3 0 4	2	0	1	1	0	0	0	-22
5 Janiya Gillam	21:13	0-0	0-0	0-0	2 2 2	1 0 0	0	1	0	0	0	0	0	-29
13 Justus Irish-Holmes	25:18	3-6	1-2	0-1	1 1 1	1 2 7	0	4	0	1	1	0	0	-22
23 Katelyn Gipson	12:59	0-1	0-1	0-0	0 2 0	0 0 0	0	0	0	0	0	0	0	-19
Team					3 0 3	0 0 0								
Totals		13-50	3-18	9-15	11 22 33	16 19 38	5	28	2	2	3	5	0	
Technical Fouls: NONE														
Dead Ball Rebounds: 3, 0														
Shooting By Period														
1st FG%	2-13	15.4%												
3PT%	0-5	0.0%												
FT%	0-0	0%												
2nd FG%	6-13	46.2%												
3PT%	2-6	33.3%												
FT%	4-8	50%												
3rd FG%	0-9	0.0%												
3PT%	0-1	0.0%												
FT%	5-6	83.3%												
4th FG%	5-15	33.3%												
3PT%	1-5	20.0%												
GM FG%	13-50	26.0%												
3PT%	3-18	16.7%												
FT%	9-15	60.0%												


Arkansas State - 88														
Record: 4-1														
NO. Name	Min	FG	3P	FT	Rebounds	Fouls	TP	AS	TO	ST	Blocks	BS	BA	+/
		M-A	M-A	M-A	OR DR TOT	PF FD								
23 Trinite Jackson	F 11:52	6-11	0-0	1-3	6 1 7	2 3 13	0	0	0	0	1	0	0	25
1 Jireh Washington	G 18:00	4-7	2-3	2-2	1 3 4	0 1 12	1	0	0	0	0	0	0	30
3 Morgan Wallace	G 24:04	3-3	0-0	0-0	2 2 2	3 6 4	0	0	0	0	0	0	0	37
4 Mya Love	G 19:12	4-7	2-4	3-4	2 1 3	3 13 3	1	2	0	0	0	0	0	37
10 Jada Stinson	G 20:28	1-7	1-5	0-0	3 8 3	0 3 6	0	0	0	0	0	0	0	30
24 Karolina Szydlowska	15:12	2-6	0-1	0-0	1 1 2	1 1 4	1	1	0	0	0	0	0	10
35 Peyton Martin	12:55	5-9	0-1	0-2	3 2 5	3 1 10	3	3	2	0	0	0	0	15
2 Hilani Cantone	12:50	2-4	0-0	2-2	0 1 1	1 2 6	2	3	0	0	0	0	0	15
5 Jordyn Brown	15:00	1-4	0-3	0-0	0 2 2	1 1 2	0	1	2	0	0	0	0	28
13 Talia Roldan	08:30	1-3	0-0	2-2	0 2 0	1 4 0	0	0	1	0	1	0	0	5
21 Seynabou Thiam	09:45	2-3	0-0	0-0	3 3 6	0 0 4	1	1	1	0	0	0	0	-2
25 Kayla Williams	13:36	3-6	1-3	0-0	0 4 4	0 0 7	0	0	0	0	0	0	0	7
12 Mattie Hatcher	14:35	1-2	1-1	0-0	0 1 1	1 2 3	1	1	2	0	0	0	0	11
14 Hailee Erickson	05:35	0-1	0-1	1-2	0 1 1	0 1 1	1	0	0	0	0	0	0	1
11 Victoria Dames	02:22	0-1	0-1	0-0	0 0 0	0 0 0	0	0	0	0	0	0	0	1
Team					0 1 1	0 0 0								
Totals		35-74	7-23	11-17	21 28 49	19 16 88	22	13	16	3	2	5	0	
Technical Fouls: NONE														
Dead Ball Rebounds: 2, 1														
Shooting By Period														
1st FG%	11-18	61.1%												
3PT%	2-6	33.3%												
FT%	4-4	100%												
2nd FG%	8-21	38.1%												
3PT%	1-4	25.0%												
FT%	4-9	44.4%												
3rd FG%	9-19	47.4%												
3PT%	3-7	42.9%												
FT%	0-0	0%												
4th FG%	7-16	43.8%												
3PT%	1-6	16.7%												
FT%	3-4	75%												
GM FG%	35-74	47.3%												
3PT%	7-23	30.4%												
FT%	11-17	64.7%												

Biggest lead		CCC	ASU
0 (1st 10:00)		51 (4th 2:08)	
Best Scoring Run		6 (2nd 7:33)	16 (1st 5:58)
Lead Changes		0	
Times Tied		0	
Time with Lead		00:00	39:45

7

Arkansas State 54, Texas State 53

Jan. 8, 2021 • Jonesboro, Ark. • 218



Official Basketball Box Score - Final

Texas State at Arkansas State

01/08/21 First National Bank Arena, Jonesboro, Ark.

2020-21 Women's Basketball

Game Time: 6:00 PM

Game Duration: 1:58

Attendance: 218

Officials: Kyle Galloway, Molly Caldwell, Joshua Hall

Texas State - 53														
Record: 4-4 (1-2)														
NO. Name	Min	FG M-A	3P M-A	FT M-A	Rebounds OR DR TOT	Fouls PF FD	TP	AS	TO	ST	Blocks BS BA	+/-		
25 Laurny Thompson	F 27:45	5-9	0-0	1-2	1 3 4	4 3	11	2	5	0	0 1	-3	1 st FG%	5-19 26.3%
32 Da'Nae Hood	F 27:40	5-15	0-7	0-0	2 6 8	4 2	10	0	2	1	0 0	-3	3PT%	1-7 14.3%
1 Avonne Alexander	G 29:38	4-7	0-1	0-3	4 2 6	3 4	8	2	1	0	0 0	-1	FT%	2-3 66.7%
3 Kennedy Taylor	G 38:10	3-8	1-3	4-4	1 1 2	2 8	11	5	3	2	0 0	-1	2 nd FG%	4-14 28.6%
13 Keshlyn King	G 32:49	1-7	1-5	2-2	3 3 6	1 2	5	1	0	0	0 1	-1	3PT%	0-5 0.0%
15 Ja'Kayla Bowie	16:02	1-4	1-4	1-2	2 2 4	5 1	4	1	1	0	0 0	-1	1 st FT%	2-2 100%
20 Chelsea Johnson	08:38	1-5	0-0	0-0	1 1 2	3 0	2	0	1	0	0 2	0	3 rd FG%	6-13 46.2%
23 Tiana Eaton	12:18	0-4	0-2	0-0	1 1 1	1 0	0	1	3	1	0 0	-1	3PT%	2-7 28.6%
33 Gabby Standifer	07:00	1-3	0-1	0-0	0 3 3	0 0	2	1	0	1	0 1	-3	FT%	3-6 50.0%
Team					1 0 1	0 0							4 th FG%	6-16 37.5%
Totals		21-62	3-23	8-13	15 22 37	23 20	53	13	16	7	0 5	-1	3PT%	0-4 0.0%
Technical Fouls: NONE														
<div> <div>GM FG%</div> <div>3PT%</div> <div>FT%</div> </div> <div> <div>21-62 33.9%</div> <div>3-23 13.0%</div> <div>8-13 61.5%</div> </div>														

Arkansas State - 54														
Record: 5-1 (1-0)														
NO. Name	Min	FG M-A	3P M-A	FT M-A	Rebounds OR DR TOT	Fouls PF FD	TP	AS	TO	ST	Blocks BS BA	+/-		
23 Trinite Jackson	F 16:29	2-4	0-0	3-5	2 8 10	3 4	7	0	2	1	0 0	7	1 st FG%	5-13 38.5%
1 Jireh Washington	G 27:33	4-11	0-2	3-5	1 1 1	4 5	11	2	4	1	0 0	8	3PT%	2-6 33.3%
3 Morgan Wallace	G 37:21	3-4	1-1	5-6	1 8 9	0 4	12	3	6	3	0 0	5	FT%	2-3 66.7%
4 Mya Love	G 24:09	2-3	1-1	1-2	0 0 1	1 4	6	1	0	0	0 0	0	2 nd FG%	3-10 30.0%
10 Jada Stinson	G 34:26	3-9	1-5	0-0	0 3 3	2 1	7	4	3	0	0 0	-2	3PT%	1-3 33.3%
24 Karolina Szydowska	23:06	1-7	1-3	1-2	1 1 2	1 4	6	0	2	0	0 2	-7	FT%	6-9 66.7%
15 Peyton Martin	14:39	1-2	0-0	2-4	2 3 5	5 4	4	0	0	0	3 0	-2	3 rd FG%	5-12 41.7%
12 Mattie Hatcher	11:53	1-2	1-2	0-0	0 1 1	1 1	3	1	2	0	0 0	-1	2 nd FT%	1-5 20.0%
25 Kayla Williams	10:20	0-3	0-2	0-0	2 2 4	0 0	0	0	0	0	0 0	-3	4 th FG%	5-8 62.5%
5 Jordyn Brown	00:02	0-0	0-0	0-0	0 0 0	0 0	0	0	0	0	0 0	0	3PT%	1-2 50.0%
21 Seynabou Thiam	00:02	0-0	0-0	0-0	0 0 0	0 0	0	0	0	0	0 0	0	FT%	2-4 50%
Team					1 1 2	0 0							GM FG%	17-45 37.8%
Totals		17-45	5-16	15-24	9 29 38	23 54	9	11	8	5	0 1	1	3PT%	5-16 31.3%
Technical Fouls: NONE														
<div> <div>GM FG%</div> <div>3PT%</div> <div>FT%</div> </div> <div> <div>17-45 37.8%</div> <div>5-16 31.3%</div> <div>15-24 62.5%</div> </div>														

	TXST	ASU	Points from Turnovers	TXST	ASU	Period by Period Scoring					
Biggest lead	5 (1 st 3:25)	10 (4 th 5:29)	Turnovers	13	9	1st	2nd	3rd	4th	TOT	
Best Scoring Run	11 (4 th 0:30)	6 (2 nd 2:29)	Paint	28	22	TXST	13	10	17	13	53
Lead Changes <td>9</td> <td>9</td> <td>Second Chance</td> <td>6</td> <td>4</td> <td></td> <td></td> <td></td> <td></td> <td></td> <td></td>	9	9	Second Chance	6	4						
Times Tied <td>3</td> <td>3</td> <td>Fast Breaks</td> <td>4</td> <td>9</td> <td>ASU</td> <td>14</td> <td>13</td> <td>16</td> <td>11</td> <td>54</td>	3	3	Fast Breaks	4	9	ASU	14	13	16	11	54
Time with Lead	09:12	28:48	Bench	8	11						

2020-21 BOX SCORES

9

Arkansas State at ULM

Jan. 15, 2021 • Monroe, La. • 6 p.m.



Official Basketball Box Score - Final
Arkansas St. at ULM
01/15/21 Rank-Bing Coliseum Monroe, Louisiana
2020-21 Women's Basketball

Game Time: 6:00 PM
Game Duration: 1:50
Attendance: 695

Officials: Aaron Brooks, Syntia Tullis, Travis Jones

Arkansas St. - 64

Record: 8-1 (3-0)

NO.	Name		Min	FG	3P	FT	Rebounds	Fouls	TP	AS	TO	ST	Blocks	BS	BA	+	-	
23	Trinitee Jackson	F	22:56	3-7	0-0	0-0	3	7	10	2	0	6	1	3	1	0	12	
35	Peyton Martin	F	23:43	1-6	0-0	4-4	2	1	3	0	2	6	0	3	1	0	12	
1	Jireh Washington	G	37:38	6-10	2-3	10-12	1	6	7	1	11	24	2	4	2	0	21	
3	Morgan Wallace	G	36:32	2-3	1-2	6-6	1	2	3	3	3	11	0	4	4	0	20	
4	Mya Love	G	16:08	1-2	1-1	1-2	0	0	0	3	1	4	1	0	0	0	27	
10	Jada Stinson		31:43	3-11	2-7	1-2	0	3	3	1	1	9	4	2	4	0	14	
24	Karolina Szydlowska		20:01	1-4	0-2	2-2	1	1	2	2	2	4	0	2	1	0	-7	
2	Hilari Cantone		02:22	0-0	0-0	0-0	0	0	0	3	0	0	0	0	0	0	-7	
12	Mattie Hatcher		05:42	0-2	0-1	0-0	0	0	0	0	0	0	1	0	0	0	-10	
5	Jordyn Brown		01:05	0-0	0-0	0-0	0	0	0	0	0	0	0	0	0	0	-4	
21	Seynabou Thiam		01:05	0-0	0-0	0-0	0	0	0	0	0	0	0	0	0	0	-4	
25	Kayla Williams		01:05	0-0	0-0	0-0	0	0	0	0	0	0	0	0	0	0	-4	
Team							0	1	1			0						
Totals				17-45	6-16	24-28	8	21	29	15	20	64	8	19	13	0	3	14

Technical Fouls: NONE

Dead Ball Rebounds: 3, 0

ULM - 50

Record: 2-7 (0-3)

NO.	Name	Min	FG		3P		FT		Reb		Fouls		TP		AS		TO		ST		Blocks		BS	BA	+/-	Shooting By Period																																																																																																																																																																																																																																																																																																																																																																																																																																																																																																																																																																																																																																																																																																																																																																																																																																																																																																																																																																																																																																																																																																																																																																																																			
			M	A	M	A	M	A	M	A	M	A	M	A	M	A	M	A	M	A	M	A				1st	FG%	5-12	41.7%																																																																																																																																																																																																																																																																																																																																																																																																																																																																																																																																																																																																																																																																																																																																																																																																																																																																																																																																																																																																																																																																																																																																																																																																
4	Kierra Crockett	F 13:39	1-2	0-0	0-0	2	2	4	5	3	2	2	0	0	0	0	0	0	0	0	0	-8			3PT%	24	50.0%																																																																																																																																																																																																																																																																																																																																																																																																																																																																																																																																																																																																																																																																																																																																																																																																																																																																																																																																																																																																																																																																																																																																																																																																		
24	Diamond Brooks	C 31:53	2-2	0-0	0-0	0	3	3	3	2	4	2	0	0	0	0	0	0	0	0	-12			3PT%	13	33.3%																																																																																																																																																																																																																																																																																																																																																																																																																																																																																																																																																																																																																																																																																																																																																																																																																																																																																																																																																																																																																																																																																																																																																																																																			
2	Gara Beth Self	G 25:10	4-7	1-2	2-3	0	1	1	1	4	11	2	3	3	0	0	0	0	0	0	3			2nd	3PT%	7-11	63.6%																																																																																																																																																																																																																																																																																																																																																																																																																																																																																																																																																																																																																																																																																																																																																																																																																																																																																																																																																																																																																																																																																																																																																																																																		
3	Linda van Schaik	G 30:00	0-2	0-1	0-0	0	3	3	2	0	0	1	6	1	1	0	0	0	0	0	-5			3rd	FG%	11	33.3%																																																																																																																																																																																																																																																																																																																																																																																																																																																																																																																																																																																																																																																																																																																																																																																																																																																																																																																																																																																																																																																																																																																																																																																																		
25	Kierra Brimzy	G 30:34	6-11	1-5	0-0	2	2	2	0	0	13	1	4	0	0	0	0	0	0	-10			3rd	FG%	11	100%																																																																																																																																																																																																																																																																																																																																																																																																																																																																																																																																																																																																																																																																																																																																																																																																																																																																																																																																																																																																																																																																																																																																																																																																			
11	Whitney Goins	28:36	4-9	2-4	1-3	0	2	2	1	2	11	1	1	3	0	0	0	0	-11			3rd	FG%	4-6	66.7%																																																																																																																																																																																																																																																																																																																																																																																																																																																																																																																																																																																																																																																																																																																																																																																																																																																																																																																																																																																																																																																																																																																																																																																																				
10	Maddi Gatte	11:33	2-4	0-1	2-2	0	0	0	3	1	6	0	2	1	0	0	0	0	-16			4th	FG%	4-6	66.7%																																																																																																																																																																																																																																																																																																																																																																																																																																																																																																																																																																																																																																																																																																																																																																																																																																																																																																																																																																																																																																																																																																																																																																																																				
13	Gracen Williams	19:03	0-2	0-1	1-2	0	2	2	3	2	1	5	4	0	0	0	0	0	-8			4th	FG%	4-6	66.7%																																																																																																																																																																																																																																																																																																																																																																																																																																																																																																																																																																																																																																																																																																																																																																																																																																																																																																																																																																																																																																																																																																																																																																																																				
12	Kyren Whittington	05:39	0-0	0-0	0-0	0	2	2	1	0	0	1	1	1	0	0	0	0	-2			4th	FG%	4-6	66.7%																																																																																																																																																																																																																																																																																																																																																																																																																																																																																																																																																																																																																																																																																																																																																																																																																																																																																																																																																																																																																																																																																																																																																																																																				
23	Morgan Hill	03:30	1-1	0-0	0-0	0	0	0	1	0	2	0	0	0	0	0	0	0	-1			3PT%	0-4	0.0%																																																																																																																																																																																																																																																																																																																																																																																																																																																																																																																																																																																																																																																																																																																																																																																																																																																																																																																																																																																																																																																																																																																																																																																																					
23	Tasionna McDowell	00:23	0-0	0-0	0-0	0	0	0	1	0	0	0	0	0	0	0	0	0	0			3PT%	0-0	0.0%																																																																																																																																																																																																																																																																																																																																																																																																																																																																																																																																																																																																																																																																																																																																																																																																																																																																																																																																																																																																																																																																																																																																																																																																					
Team									0			2			2									GM FG%			20-40	50.0%																																																																																																																																																																																																																																																																																																																																																																																																																																																																																																																																																																																																																																																																																																																																																																																																																																																																																																																																																																																																																																																																																																																																																																																																	
Totals						20-40			4-14			6-10			2			19			21			20			15			50			12			25			9			3			0			-14			20.6%																																																																																																																																																																																																																																																																																																																																																																																																																																																																																																																																																																																																																																																																																																																																																																																																																																																																																																																																																																																																																																																																																																																																																																										

Technical Fouls: NONE

Dead Ball Rebounds: 1, 2

	ASU	ULM
Biggest lead	18 (4 th 1:44)	7 (3 rd 7:53)
Best Scoring Run	20 (4 th 1:44)	7 (2 nd 3:18)
Lead Changes	4	
Times Tied	1	
Time with Lead	24:06	14:57

Points from Turnovers	ASU	ULM
Paint	18	24
Second Chance	12	0
Fast Breaks	8	5
Bench	13	20

Period by Period Scoring	1st	2nd	3rd	4th	TOT
ASU	17	6	17	24	64
ULM	13	16	13	8	50

10

Arkansas State at ULM

Jan. 16, 2021 • Monroe, La. • 4 p.m.



Official Basketball Box Score - Final
Arkansas St. at ULM
01/16/21 Rank-Bing Coliseum Monroe, Louisiana
2020-21 Women's Basketball

Game Time: 4:00 PM
Game Duration: 1:45
Attendance: 718

Officials: Kyle Galloway, Britton Sherry, Jacklyn Watson

Arkansas St. - 59

Record: 9-1 (4-0)

NO.	Name	Min	FG M-A	3P M-A	FT M-A	Rebounds OR DR TOT	Fouls FD	TP	AS	TO	ST	Blocks	BS	BA	+	-	
23	Trinitee Jackson	F 22:17	2-9	0-0	3-6	3	3	6	4	5	7	0	2	0	1	0	10
35	Peyton Martin	F 25:55	2-8	0-0	0-0	4	5	9	1	2	4	0	2	0	0	1	13
1	Jireh Washington	G 38:41	6-13	0-1	5-7	2	4	6	0	4	17	2	3	4	0	0	14
3	Morgan Wallace	G 37:04	3-9	1-3	2-5	3	3	6	4	4	9	4	0	1	0	0	13
4	Mya Love	G 19:53	0-2	0-2	0-0	2	2	4	2	0	0	0	2	0	0	0	14
10	Jada Stinson	32:12	5-16	5-10	0-0	1	1	2	2	0	15	0	2	2	0	1	9
24	Karolina Szydlowska	21:28	3-6	1-3	0-0	1	6	7	1	0	7	3	1	3	1	0	4
2	Hilari Cantone	01:19	0-0	0-0	0-0	0	0	0	0	0	1	0	0	0	0	0	1
12	Mattie Hatcher	01:11	0-0	0-0	0-0	0	0	0	0	0	0	0	0	0	0	0	-3
Team						1	3	4			0						
Totals			21-63	7-19	10-18	17	27	44	14	15	59	10	13	10	2	2	15
Technical Fouls: NONE																	

Technical Fouls: NONE

Dead Ball Rebounds: 4, 0

ULM - 44

Record: 2-8 (0-4)

NOV 24																		
NO.	Name	Min	FG M/A	3P M/A	FT M/A	Rebounds OR DR TOT	Fouls PF FD	TP	AS	TO	ST	Blocks BS BA	+	-				
4	Kierra Crockett	F 35:42	3-8	0-0	2-3	3	11	14	2	6	8	1	2	2	1	0	-12	
24	Diamond Brooks	C 14:04	2-2	0-0	0-0	1	4	5	2	0	4	1	0	0	0	0	-8	
3	Linda van Schaik	G 29:42	3-9	1-6	0-0	1	1	2	4	1	7	0	2	1	1	1	-7	
13	Gracen Williams	G 20:37	0-2	0-1	0-0	0	1	1	0	0	0	4	3	0	0	0	-8	
25	Kierra Brimzy	G 32:53	3-12	1-5	0-0	1	1	2	3	1	7	2	5	0	0	1	-19	
11	Whitney Goins	32:23	4-12	2-7	0-0	1	2	3	2	2	10	1	2	2	0	0	-12	
10	Maddi Gatte	21:37	1-6	0-3	2-2	1	3	4	0	2	4	2	1	1	0	0	-6	
12	Morgan Hill	11:23	2-3	0-0	0-1	3	3	6	2	2	4	0	0	0	0	0	-1	
40	Hannah Edwards	01:39	0-1	0-0	0-0	0	0	0	0	0	0	0	0	0	0	0	-3	
Team						1	2	3			0		3					
Totals			18-57	4-22	4-6	12	28	40	15	14	44	11	18	6	2	2	-15	
Technical Fouls: NONE																		

Technical Fouls: NONE

Dead Ball Rebounds: 2, 1

	ASU	ULM
Biggest lead	18 (4 th 6:32)	9 (1 st 0:53)
Best Scoring Run	9 (3 rd 7:55)	7 (1 st 0:53)
Lead Changes	5	
Times Tied	2	
Time with Lead	21:33	15:51

Points from Turnovers	ASU	ULM
Paint	26	24
Second Chance	14	9
Fast Breaks	5	0
Bench	22	18

Period by Period Scoring	1st	2nd	3rd	4th	TOT
ASU	10	20	19	10	59
ULM	17	9	8	10	44

11

Arkansas State vs Louisiana

Jan. 22, 2021 • Jonesboro, Ark. • 6 p.m.

12

Arkansas State vs Louisiana

Jan. 23, 2021 • Jonesboro, Ark. • 4 p.m.

	1	<div>JIREH WASHINGTON</div> <div>Jr. G 5-8 Memphis, Tenn. (Central HS)</div> <table><tr><th>GP/GS</th><th>PPG</th><th>RPG</th><th>APG</th><th>SPG</th><th>F6%</th><th>FT%</th></tr><tr><td>20-21</td><td>10/10</td><td>12.4</td><td>4.5</td><td>2.9</td><td>3.1</td><td>.511</td><td>.676</td></tr><tr><td>Career</td><td>70/65</td><td>11.8</td><td>4.3</td><td>3.4</td><td>1.6</td><td>.450</td><td>.653</td></tr></table> <div>Career Highs Pts: 24 Reb: 10 Asst: 8 Stl: 7 FGM: 10</div>	GP/GS	PPG	RPG	APG	SPG	F6%	FT%	20-21	10/10	12.4	4.5	2.9	3.1	.511	.676	Career	70/65	11.8	4.3	3.4	1.6	.450	.653	<div>ALL SBC</div> <ul style="list-style-type: none">About Washington: "Playmaker"; Good at creating for herself and her teammatesPreseason All-Sun Belt Conference (Third Team); 2019-20 Third Team All-SBCScored 10+ in 19 of last 21 games; 6 straight at ULM (1/15): 24 points (T-career-high; 10-12 FT), 7 reboundsat ULM (1/16): 17 points, 6 rebounds, 4 steals
GP/GS	PPG	RPG	APG	SPG	F6%	FT%																				
20-21	10/10	12.4	4.5	2.9	3.1	.511	.676																			
Career	70/65	11.8	4.3	3.4	1.6	.450	.653																			
	2	<div>HILANI CANTONE</div> <div>Fr. G 5-8 Apopka, Fla. (Apopka HS)</div> <table><tr><th>GP/GS</th><th>PPG</th><th>RPG</th><th>APG</th><th>SPG</th><th>F6%</th><th>FT%</th></tr><tr><td>20-21</td><td>9/0</td><td>2.4</td><td>0.3</td><td>1.3</td><td>0.7</td><td>.421</td><td>.667</td></tr><tr><td>Career</td><td>9/0</td><td>2.4</td><td>0.3</td><td>1.3</td><td>0.7</td><td>.421</td><td>.667</td></tr></table> <div>Career Highs Pts: 10 Reb: 1 Asst: 5 Stl: 3 FGM: 4</div>	GP/GS	PPG	RPG	APG	SPG	F6%	FT%	20-21	9/0	2.4	0.3	1.3	0.7	.421	.667	Career	9/0	2.4	0.3	1.3	0.7	.421	.667	<ul style="list-style-type: none">About Cantone: "The game moves slower for her than it does for most freshmen... plays under control"10 points, 5 assists vs Champion Christian (12/15/20)1/4 vs Central Baptist: 4 points, 4 assists
GP/GS	PPG	RPG	APG	SPG	F6%	FT%																				
20-21	9/0	2.4	0.3	1.3	0.7	.421	.667																			
Career	9/0	2.4	0.3	1.3	0.7	.421	.667																			
	3	<div>MORGAN WALLACE</div> <div>Sr. G 5-10 Little Rock, Ark. (Pulaski Academy)</div> <table><tr><th>GP/GS</th><th>PPG</th><th>RPG</th><th>APG</th><th>SPG</th><th>F6%</th><th>FT%</th></tr><tr><td>20-21</td><td>9/9</td><td>9.1</td><td>5.3</td><td>3.8</td><td>1.4</td><td>.418</td><td>.775</td></tr><tr><td>Career</td><td>84/70</td><td>8.7</td><td>5.9</td><td>2.2</td><td>1.4</td><td>.396</td><td>.681</td></tr></table> <div>Career Highs Pts: 21 Reb: 15 Asst: 8 Stl: 4 FG: 7</div>	GP/GS	PPG	RPG	APG	SPG	F6%	FT%	20-21	9/9	9.1	5.3	3.8	1.4	.418	.775	Career	84/70	8.7	5.9	2.2	1.4	.396	.681	<ul style="list-style-type: none">About Wallace: "Glue piece"; Has a motor that never really stops; Steady on-floor presenceat ULM (1/15): 11 points (6-6 FT), 3 rebounds, 4 stealsat ULM (1/16): 9 points, 6 rebounds, 4 assistsNeeds 3 rebounds for 500 in her career
GP/GS	PPG	RPG	APG	SPG	F6%	FT%																				
20-21	9/9	9.1	5.3	3.8	1.4	.418	.775																			
Career	84/70	8.7	5.9	2.2	1.4	.396	.681																			
	4	<div>MYA LOVE</div> <div>So. G 5-8 Jonesboro, Ark. (Nettleton HS)</div> <table><tr><th>GP/GS</th><th>PPG</th><th>RPG</th><th>APG</th><th>F6%</th><th>FT%</th><th>3FG%</th></tr><tr><td>20-21</td><td>10/6</td><td>4.4</td><td>3.2</td><td>1.6</td><td>.400</td><td>.550</td><td>.313</td></tr><tr><td>Career</td><td>36/14</td><td>3.1</td><td>2.5</td><td>0.8</td><td>.364</td><td>.595</td><td>.294</td></tr></table> <div>Career Highs Pts: 15 Reb: 7 Asst: 5 Stl: 4 FG: 6</div>	GP/GS	PPG	RPG	APG	F6%	FT%	3FG%	20-21	10/6	4.4	3.2	1.6	.400	.550	.313	Career	36/14	3.1	2.5	0.8	.364	.595	.294	<ul style="list-style-type: none">About Love: "Relentless"; Does all the dirty work and doesn't mind getting on the floor and putting her body on the line; becoming a more confident offensive threat13 points, 3 rebounds, 3 assists vs Champion Christian (12/17/20)at ULM (1/15): 4 points
GP/GS	PPG	RPG	APG	F6%	FT%	3FG%																				
20-21	10/6	4.4	3.2	1.6	.400	.550	.313																			
Career	36/14	3.1	2.5	0.8	.364	.595	.294																			
	5	<div>JORDYN BROWN</div> <div>Jr. G 5-8 Clovis, Calif. (Fresno City College)</div> <table><tr><th>GP/GS</th><th>PPG</th><th>RPG</th><th>APG</th><th>F6%</th><th>FT%</th><th>3FG%</th></tr><tr><td>20-21</td><td>9/0</td><td>1.7</td><td>1.8</td><td>0.7</td><td>.294</td><td>.667</td><td>.083</td></tr><tr><td>Career</td><td>9/0</td><td>1.7</td><td>1.8</td><td>0.7</td><td>.294</td><td>.667</td><td>.083</td></tr></table> <div>Career Highs Pts: 9 Reb: 6 Asst: 2 Stl: 3 FGM: 3</div>	GP/GS	PPG	RPG	APG	F6%	FT%	3FG%	20-21	9/0	1.7	1.8	0.7	.294	.667	.083	Career	9/0	1.7	1.8	0.7	.294	.667	.083	<ul style="list-style-type: none">About "JB": Has adjusted well to Jonesboro; Never really has a bad day; can shoot extremely well but also make plays off the dribbleThird-Team All-State at Fresno City College12/15 vs Champion Christian: 9 points, 5 rebounds, 2 assists, 3 steals1/4 vs Central Baptist: 6 rebounds, 2 assists in seven minutes
GP/GS	PPG	RPG	APG	F6%	FT%	3FG%																				
20-21	9/0	1.7	1.8	0.7	.294	.667	.083																			
Career	9/0	1.7	1.8	0.7	.294	.667	.083																			
	10	<div>JADA STINSON</div> <div>R.Jr. G 5-8 Elizabethtown, Ky. (Elizabethtown HS/Memphis)</div> <table><tr><th>GP/GS</th><th>PPG</th><th>RPG</th><th>APG</th><th>SPG</th><th>F6%</th><th>3FG%</th></tr><tr><td>20-21</td><td>10/7</td><td>11.9</td><td>3.7</td><td>3.1</td><td>1.8</td><td>.413</td><td>.354</td></tr><tr><td>Career</td><td>68/37</td><td>7.1</td><td>2.3</td><td>2.4</td><td>0.9</td><td>.347</td><td>.293</td></tr></table> <div>Career Highs Pts: 24 Reb: 8 Asst: 7 Stl: 3 FG: 9</div>	GP/GS	PPG	RPG	APG	SPG	F6%	3FG%	20-21	10/7	11.9	3.7	3.1	1.8	.413	.354	Career	68/37	7.1	2.3	2.4	0.9	.347	.293	<ul style="list-style-type: none">About Stinson: Versatile guard; a threat to drive or shoot and can match up with most positions; shoots left-handed from three, right-handed for all other shotsat ULM (1/15): 9 points, 3 rebounds, 4 assists, 4 steals off the benchat ULM (1/16): 15 points on 5-10 from 3-point range
GP/GS	PPG	RPG	APG	SPG	F6%	3FG%																				
20-21	10/7	11.9	3.7	3.1	1.8	.413	.354																			
Career	68/37	7.1	2.3	2.4	0.9	.347	.293																			
	11	<div>VIC DAMES</div> <div>Fr. G/F 6-0 Loganville, Ga. (Grayson HS)</div> <table><tr><th>GP/GS</th><th>PPG</th><th>RPG</th><th>APG</th><th>F6%</th><th>FT%</th><th>3FG%</th></tr><tr><td>20-21</td><td>4/0</td><td>2.5</td><td>0.5</td><td>0.3</td><td>.571</td><td>-</td><td>.500</td></tr><tr><td>Career</td><td>4/0</td><td>2.5</td><td>0.5</td><td>0.3</td><td>.571</td><td>-</td><td>.500</td></tr></table> <div>Career Highs Pts: 5 Reb: 2 Asst: 1 Stl: - FGM: 2</div>	GP/GS	PPG	RPG	APG	F6%	FT%	3FG%	20-21	4/0	2.5	0.5	0.3	.571	-	.500	Career	4/0	2.5	0.5	0.3	.571	-	.500	<ul style="list-style-type: none">About Vic: Has potential to be very disruptive defensively; helps stretch the floor and create spaceMade her debut vs Williams Baptist (12/11): 2 points12/15/20 vs Champion Christian: 5 pts, 2 reb, 1 ast, 2-3 FG (1-2 3FG)1/4/21 vs Central Baptist: 3 points
GP/GS	PPG	RPG	APG	F6%	FT%	3FG%																				
20-21	4/0	2.5	0.5	0.3	.571	-	.500																			
Career	4/0	2.5	0.5	0.3	.571	-	.500																			
	12	<div>MATTIE HATCHER</div> <div>Fr. G 5-5 Little Rock, Ark. (Pulaski Academy)</div> <table><tr><th>GP/GS</th><th>PPG</th><th>RPG</th><th>APG</th><th>F6%</th><th>FT%</th><th>3FG%</th></tr><tr><td>20-21</td><td>9/0</td><td>3.7</td><td>0.8</td><td>1.1</td><td>.414</td><td>.500</td><td>.421</td></tr><tr><td>Career</td><td>9/0</td><td>3.7</td><td>0.8</td><td>1.1</td><td>.414</td><td>.500</td><td>.421</td></tr></table> <div>Career Highs Pts: 11 Reb: 3 Asst: 4 Stl: 2 FGM: 4</div>	GP/GS	PPG	RPG	APG	F6%	FT%	3FG%	20-21	9/0	3.7	0.8	1.1	.414	.500	.421	Career	9/0	3.7	0.8	1.1	.414	.500	.421	<ul style="list-style-type: none">About Hatcher: Incredibly hard worker; "prototypical gym rat"; extremely competitive3 points vs UAPB (11/27)1/4/21 vs Central Baptist: career-high 11 points, 3 rebounds, 4 assists
GP/GS	PPG	RPG	APG	F6%	FT%	3FG%																				
20-21	9/0	3.7	0.8	1.1	.414	.500	.421																			
Career	9/0	3.7	0.8	1.1	.414	.500	.421																			
	13	<div>TALIA ROLDAN</div> <div>Jr. F 6-4 Merrillville, Ind. (Andrean HS/UAB)</div> <table><tr><th>GP/GS</th><th>PPG</th><th>RPG</th><th>BPG</th><th>SPG</th><th>F6%</th><th>FT%</th></tr><tr><td>20-21</td><td>5/0</td><td>3.4</td><td>3.6</td><td>0.2</td><td>0.2</td><td>.500</td><td>.833</td></tr><tr><td>Career</td><td>40/0</td><td>1.8</td><td>1.3</td><td>0.1</td><td>0.1</td><td>.389</td><td>.718</td></tr></table> <div>Career Highs Pts: 8 Reb: 8 Blk: 2 Stl: 2 FG: 4</div>	GP/GS	PPG	RPG	BPG	SPG	F6%	FT%	20-21	5/0	3.4	3.6	0.2	0.2	.500	.833	Career	40/0	1.8	1.3	0.1	0.1	.389	.718	<ul style="list-style-type: none">About Roldan: Knows what it takes to win at a high level; versatile with size and range to stretch the defenseMade her A-State debut vs UAPB (11/27): 2 points, 3 reboundsCareer-high 8 rebounds vs Williams Baptist (12/11)Career-high 8 points vs Champion Christian (12/15/20)
GP/GS	PPG	RPG	BPG	SPG	F6%	FT%																				
20-21	5/0	3.4	3.6	0.2	0.2	.500	.833																			
Career	40/0	1.8	1.3	0.1	0.1	.389	.718																			
	14	<div>HAILEE ERICKSON</div> <div>Jr. G 5-5 Alton, Mo. (Alton HS/Three Rivers College)</div> <table><tr><th>GP/GS</th><th>PPG</th><th>RPG</th><th>APG</th><th>F6%</th><th>FT%</th><th>3FG%</th></tr><tr><td>20-21</td><td>4/0</td><td>1.0</td><td>0.5</td><td>0.8</td><td>.125</td><td>.500</td><td>.125</td></tr><tr><td>Career</td><td>15/0</td><td>1.3</td><td>0.5</td><td>0.5</td><td>.176</td><td>.250</td><td>.182</td></tr></table> <div>Career Highs Pts: 6 Reb: 2 Asst: 2 Stl: 2 3FG: 2</div>	GP/GS	PPG	RPG	APG	F6%	FT%	3FG%	20-21	4/0	1.0	0.5	0.8	.125	.500	.125	Career	15/0	1.3	0.5	0.5	.176	.250	.182	<ul style="list-style-type: none">About Erickson: "An incredible teammate"; elite shooter and opens up the floor offensivelyTallied an assist vs Williams Baptist (12/11)12/15/20 vs Champion Christian: 3 pts, 1 steal
GP/GS	PPG	RPG	APG	F6%	FT%	3FG%																				
20-21	4/0	1.0	0.5	0.8	.125	.500	.125																			
Career	15/0	1.3	0.5	0.5	.176	.250	.182																			
	21	<div>SEYNABOU THIAM</div> <div>RSo. F/C 6-6 Dakar, Senegal (McClellan CC)</div> <table><tr><th>GP/GS</th><th>PPG</th><th>RPG</th><th>SPG</th><th>BPG</th><th>F6%</th><th>FT%</th></tr><tr><td>20-21</td><td>8/0</td><td>2.4</td><td>4.0</td><td>0.4</td><td>0.5</td><td>.474</td><td>.500</td></tr><tr><td>Career</td><td>8/0</td><td>2.4</td><td>4.0</td><td>0.4</td><td>0.5</td><td>.474</td><td>.500</td></tr></table> <div>Career Highs Pts: 9 Reb: 18 Asst: 1 Blk: 1 FGM: 4</div>	GP/GS	PPG	RPG	SPG	BPG	F6%	FT%	20-21	8/0	2.4	4.0	0.4	0.5	.474	.500	Career	8/0	2.4	4.0	0.4	0.5	.474	.500	<ul style="list-style-type: none">About Thiam: "Potential is through the roof"; has desire to become an elite player; has good ball skills and the length to be disruptive on the defensive end.Made her A-State debut vs UAPB (11/27): 1 rebound4 points, 4 rebounds, 1 block vs Williams Baptist (12/11)12/15 vs Champion Christian: 9 points, 18 rebounds (11 offensive) in 19 minutes
GP/GS	PPG	RPG	SPG	BPG	F6%	FT%																				
20-21	8/0	2.4	4.0	0.4	0.5	.474	.500																			
Career	8/0	2.4	4.0	0.4	0.5	.474	.500																			
	23	<div>TRINITEE JACKSON</div> <div>Jr. F 6-3 Hopkinsville, Ky. (Christian County HS)</div> <table><tr><th>GP/GS</th><th>PPG</th><th>RPG</th><th>SPG</th><th>BPG</th><th>F6%</th><th>FT%</th></tr><tr><td>20-21</td><td>10/9</td><td>7.8</td><td>5.4</td><td>0.7</td><td>0.3</td><td>.518</td><td>.513</td></tr><tr><td>Career</td><td>68/9</td><td>4.1</td><td>3.2</td><td>0.3</td><td>0.2</td><td>.416</td><td>.510</td></tr></table> <div>Career Highs Pts: 13 Reb: 17 Stl: 2 Blk: 1 FG: 6</div>	GP/GS	PPG	RPG	SPG	BPG	F6%	FT%	20-21	10/9	7.8	5.4	0.7	0.3	.518	.513	Career	68/9	4.1	3.2	0.3	0.2	.416	.510	<ul style="list-style-type: none">About Jackson: Great touch around the rim; has worked hard on her conditioning since March and is in the best shape of her life.Has doubled her average minutes played from last seasonat ULM (1/15): 6 points, 10 rebat ULM (1/16): 7 points, 6 reb
GP/GS	PPG	RPG	SPG	BPG	F6%	FT%																				
20-21	10/9	7.8	5.4	0.7	0.3	.518	.513																			
Career	68/9	4.1	3.2	0.3	0.2	.416	.510																			
	24	<div>KAROLINA SZYDŁOWSKA</div> <div>Jr. F 6-0 Wrocław, Poland (Seward County CC)</div> <table><tr><th>GP/GS</th><th>PPG</th><th>RPG</th><th>BPG</th><th>F6%</th><th>FT%</th><th>3FG%</th></tr><tr><td>20-21</td><td>10/5</td><td>6.4</td><td>4.8</td><td>0.9</td><td>.358</td><td>.667</td><td>.258</td></tr><tr><td>Career</td><td>10/5</td><td>6.4</td><td>4.8</td><td>0.9</td><td>.358</td><td>.667</td><td>.258</td></tr></table> <div>Career Highs Pts: 10 Reb: 11 Blk: 3 Stl: 1 FGM: 4</div>	GP/GS	PPG	RPG	BPG	F6%	FT%	3FG%	20-21	10/5	6.4	4.8	0.9	.358	.667	.258	Career	10/5	6.4	4.8	0.9	.358	.667	.258	<ul style="list-style-type: none">About Szydłowska: Long forward who is strong enough to finish at the rim; has a great pull-up game but can catch and shoot from deepvs Texas State (1/9): 11 points, 3 reboundsat ULM (1/16): 7 points, 7 rebounds
GP/GS	PPG	RPG	BPG	F6%	FT%	3FG%																				
20-21	10/5	6.4	4.8	0.9	.358	.667	.258																			
Career	10/5	6.4	4.8	0.9	.358	.667	.258																			
	25	<div>KAYLA WILLIAMS</div> <div>R.Jr. F 6-1 Memphis, Tenn. (Overton HS/Wichita State)</div> <table><tr><th>GP/GS</th><th>PPG</th><th>RPG</th><th>APG</th><th>F6%</th><th>FT%</th><th>3FG%</th></tr><tr><td>20-21</td><td>9/0</td><td>2.6</td><td>2.0</td><td>0.4</td><td>.364</td><td>1.000</td><td>.273</td></tr><tr><td>Career</td><td>72/30</td><td>3.3</td><td>1.3</td><td>0.5</td><td>.335</td><td>.731</td><td>.327</td></tr></table> <div>Career Highs Pts: 17 Reb: 6 Asst: 4 Stl: 3 3FG: 4</div>	GP/GS	PPG	RPG	APG	F6%	FT%	3FG%	20-21	9/0	2.6	2.0	0.4	.364	1.000	.273	Career	72/30	3.3	1.3	0.5	.335	.731	.327	<ul style="list-style-type: none">About Williams: Brings lots of experience, can cover nearly every position on the floor defensively.5 points vs Williams Baptist (12/11)vs Champion Christian (12/17): 7 points, 4 rebounds
GP/GS	PPG	RPG	APG	F6%	FT%	3FG%																				
20-21	9/0	2.6	2.0	0.4	.364	1.000	.273																			
Career	72/30	3.3	1.3	0.5	.335	.731	.327																			
	35	<div>PEYTON MARTIN</div> <div>Sr. F 5-11 Pine Bluff, Ark. (Watson Chapel HS)</div> <table><tr><th>GP/GS</th><th>PPG</th><th>RPG</th><th>APG</th><th>BPG</th><th>F6%</th><th>FT%</th></tr><tr><td>20-21</td><td>10/4</td><td>10.3</td><td>5.5</td><td>0.6</td><td>0.7</td><td>.479</td><td>.684</td></tr><tr><td>Career</td><td>86/62</td><td>11.3</td><td>5.6</td><td>0.6</td><td>0.5</td><td>.449</td><td>.663</td></tr></table> <div>Career Highs Pts: 28 Reb: 14 Asst: 4 Stl: 5 FG: 11</div>	GP/GS	PPG	RPG	APG	BPG	F6%	FT%	20-21	10/4	10.3	5.5	0.6	0.7	.479	.684	Career	86/62	11.3	5.6	0.6	0.5	.449	.663	<ul style="list-style-type: none">About Martin: Brings the energy every day; extremely athletic and really good 15 feet and in, but her range has expanded and looks to be more of a perimeter threat2018-19 Third Team All-SBCTeam leader in double-figure scoring games (51).vs Texas State (1/9): 18 points, 8 rebounds
GP/GS	PPG	RPG	APG	BPG	F6%	FT%																				
20-21	10/4	10.3	5.5	0.6	0.7	.479	.684																			
Career	86/62	11.3	5.6	0.6	0.5	.449	.663																			