



ULM Warhawks Men's Basketball

University of Louisiana at Monroe



ULM (6-6, 0-1 SBC)
WARHAWKS

Vs.

Arkansas St. (6-5, 1-1 SBC)
RED WOLVES



Game 13

Monday, Jan. 5, 2015 • 7:00 p.m.

Fant-Ewing Coliseum (7,000) • Monroe, La.

Live Stream: Warhawks All-Access (Online Only)

Radio: KLIP LA 105.3 FM, Nick White (PXP)

Twitter: @ULM_MBB

ULM Quick Notes

- The Warhawks are a perfect 5-0 at home this season and have outscored their opponents 425-292, an average score of 85-58 per outing
- ULM is looking to open 1-0 at home in SBC play for the second consecutive year after knocking off UL-Lafayette, 103-98 in double overtime last season
- The Warhawks are 17-8 all-time against the Red Wolves at home. ULM is 395-169 (.700) all-time at Fant-Ewing Coliseum
- ULM leads the SBC on the season in field goal percentage defense (.374), three-point field goal percentage defense (.277) and blocks (5.3 bpg). ULM is second in assist:turnover ratio (1.2). The three-point field goal percentage defense is also 18th in the country
- ULM is the only team in the SBC that has not allowed 80 points in a single game this season. The most the team let up was 74 points to Northwestern St. in a win
- The Warhawks are 5-0 on the season when they have at least three double-figure scorers and 5-0 when they shoot over 50 percent from the field
- ULM closed out non-conference play with a winning record for the first time since 2007-08
- Senior Tylor Ongwae leads the team in scoring with 14.6 points per game on the year and also grabs 6.1 rebounds per contest. He's posted three 20-plus scoring games this season and has led the team in scoring six times
- Sophomore Nick Coppola also averages in double-figures with 10.3 points per game and is shooting .447 (21-47) from beyond-the-arc. He ranks third in the league in both assists (4.3 apg) and assist:turnover ratio (2.7)
- Junior Majok Deng is the team's leading rebounder with 7.0 per game and also averages 7.7 points per contest. He is third in the conference in both blocks (1.8 bpg) and defensive rebounds (5.3 drpg)

ULM MEN'S BASKETBALL SCHEDULE

Sat, Nov. 15	# at UAB	W, 74-65
Mon, Nov. 17	Champion Baptist	W, 106-39
Fri, Nov. 21	# at No. 8 Florida	L, 61-56 (OT)
Wed, Nov. 26	# vs. Coastal Carolina	L, 61-48
Thurs, Nov. 27	# vs. Robert Morris	L, 71-54
Sat, Dec. 6	Louisiana College	W, 83-55
Tues, Dec. 9	Northwestern State	W, 82-74
Sat, Dec. 13	at New Mexico	L, 54-46
Tues, Dec. 16	Central Baptist	W, 78-53
Fri, Dec. 19	LSU-Alexandria	W, 76-71
Sun, Dec. 21	at Samford	L, 64-50
Tues, Dec. 30	at Georgia State*	L, 65-45
Mon, Jan. 5	Arkansas State*	7:00 PM
Thurs, Jan. 8	at UT Arlington*	7:15 PM
Sat, Jan. 10	at Texas State*	4:30 PM
Thurs, Jan. 15	Troy*	7:00 PM
Sat, Jan. 17	UALR*	4:00 PM
Mon, Jan. 19	at UL-Lafayette*	7:15 PM
Thurs, Jan. 22	UT Arlington*	7:00 PM
Sat, Jan. 24	Georgia Southern*	4:00 PM
Thurs, Jan. 29	at Troy*	7:30 PM
Sat, Jan. 31	South Alabama*	4:00 PM
Thurs, Feb. 5	at UALR*	7:30 PM
Sat, Feb. 7	at Georgia Southern*	6:30 PM
Thurs, Feb. 12	UL-Lafayette*	7:00 PM
Sat, Feb. 14	Appalachian State*	2:00 PM
Sat, Feb. 21	at Arkansas State*	7:05 PM
Thurs, Feb. 26	at South Alabama*	7:05 PM
Sat, Feb. 28	at Appalachian State*	2:30 PM
Thurs, March 5	Georgia State*	7:00 PM
Sat, March 7	Texas State*	4:00 PM
Thurs, March 12	SBC Championships%	TBA

All times Central and subject to change. **Bold** indicates home game; *-Sun Belt game; %-SBC Tournament; #Battle 4 Atlantis

We are ULM. Please note that there are only two correct versions of our institution's name, the preferred acronym ULM and the full name, the University of Louisiana at Monroe. Any other reference, including Louisiana-Monroe, UL-Monroe, La.-Monroe, LAM, or simply Monroe, are incorrect.

Media Relations Contacts

Robbie Kleinmuntz (Primary)	Michael Garabedian
Assistant Director	Graduate Assistant
kleinmuntz@ulm.edu	garabemc@warhawks.ulm.edu
O: 318-342-5462	O: 318-342-5461
C: 847-912-5380	C: 305-926-8420



ULM Warhawks Men's Basketball

University of Louisiana at Monroe



Keith Richard
Head Coach

Fifth Year at ULM
14th Season Overall

Alma Mater: ULM (1982)

THE RICHARD FILE

COACHING HONORS

- 1999 Sun Belt Coach of the Year
- Has been part of the coaching staff for seven NCAA Tournament and three NIT teams

COACHING CAREER

Season	School	Position	Record
1984-85	ULM	Graduate Assistant	17-12
1985-86	ULM	Graduate Assistant	20-10/NCAA
1986-87	Marshall	Assistant Coach	25-6/NCAA
1987-88	Marshall	Assistant Coach	24-8/NIT
1988-89	Marshall	Assistant Coach	15-15
1989-90	ULM	Assistant Coach	22-8/NCAA
1990-91	ULM	Assistant Coach	25-8/NCAA
1991-92	ULM	Assistant Coach	19-10/NCAA
1992-93	ULM	Assistant Coach	26-5/NCAA
1993-94	ULM	Assistant Coach	19-9
1994-95	La. Tech	Assistant Coach	14-13
1995-96	La. Tech	Associate Head Coach	11-17
1996-97	La. Tech	Associate Head Coach	15-14
1997-98	La. Tech	Associate Head Coach	12-15
1998-99	La. Tech	Head Coach	19-9
1999-00	La. Tech	Head Coach	21-8
2000-01	La. Tech	Head Coach	17-12
2001-02	La. Tech	Head Coach	22-10/NIT
2002-03	La. Tech	Head Coach	12-15
2003-04	La. Tech	Head Coach	15-15
2004-05	La. Tech	Head Coach	14-15
2005-06	La. Tech	Head Coach	20-13/NIT
2006-07	La. Tech	Head Coach	10-20
2008-09	LSU	Assistant Coach	27-8/NCAA
2009-10	LSU	Assistant Coach	11-20
2010-11	ULM	Head Coach	7-24
2011-12	ULM	Head Coach	3-26
2012-13	ULM	Head Coach	4-23
2013-14	ULM	Head Coach	10-17
2014-15	ULM	Head Coach	6-6

PLAYING CAREER

- Played for ULM from 1978-82; Coached by Lenny Fant, Benny Hollis & Mike Vining
- 1979 Atlantic Sun Tournament Champions, NIT
- 1980 Atlantic Sun Regular Season Champions
- 1982 Atlantic Sun Tournament Champions, NCAA
- Two-time team captain ('81 & '82)
- Led team in assists twice

EDUCATION

- Bachelor's degree in general business, ULM (1982)
- Master's degree in guidance counseling, ULM (1986)

ULM Quick Notes Continued...

- In the team's last home game, the Warhawks fought off LSU-Alexandria late. The game was tied, 71-71 when Ongwae converted an old-fashion three-point play with 20 seconds left to put the Warhawks up. After an LSUA turnover, ULM found Mack Foster wide-open down the court for a lay-up to close it

- Three days earlier, ULM cruised past Central Baptist, 78-53 at home. ULM had four players in double-figures

- ULM has had four different players tally a double-double and eight different players reach double-figure scoring in a game this season

- The Warhawks have had two players tally double-doubles in the same game twice this season, both at home (against Louisiana College and Northwestern State)

- Ongwae won Co-Louisiana Player of the Week on Dec. 22, 2014 and Sun Belt Conference Player of the Week on Nov. 18, 2014. He was named to the Preseason All-SBC Second-Team after earning four postseason awards in 2013-14

- ULM pulled out an 82-74 thriller over Northwestern State on Dec. 9. ULM led 36-19 in the first half and then had to overcome a 68-65 deficit with 5:45 remaining in the game. Ongwae led the team with 19 points and 10 rebounds, and junior DeMondre Harvey also etched a double-double with career-highs of 12 points and 10 rebounds

- Earlier this season, ULM took eighth-ranked Florida to overtime. Coppola hit a three-pointer with 19 seconds left to level the score at 51. ULM led 54-53 with 3:00 remaining in overtime after a three-point play from Ongwae

- The 61 points allowed versus No. 8 Florida was the lowest ULM has ever let up against a ranked opponent in program history

- ULM hung around in front of 13,710 fans at The Pit against New Mexico in a closely contested 54-46 decision. ULM went on an 11-0 run in the second half to make it a six-point game with 3:48 remaining

- ULM posted a historic 106-39 victory over Champion Baptist in its home opener. The 67-point win broke the school record for largest margin of victory. It was also the most points ULM scored in a game since Feb. 17, 2001 in a game against UTSA. Additionally, the 67-point victory is the largest of any game in the Sun Belt Conference this season

- The Warhawks followed it up with a 28-point home win over Louisiana College as both Deng and Coppola recorded double-doubles

- Coppola dished out a career-high 12 assists against Louisiana College, the most by a player in the league in a single game this season. Coppola started all 27 games last year at point guard as a true freshman

- The Warhawks opened the season with a 74-65 victory on the road over UAB. They had four double-figure scorers in Ongwae (18), Roberson (18), Coppola (14) and Deng (13)

- It was the first opening night victory for ULM since Nov. 14, 2008 when it defeated Morehead State, 56-54 and the first opening night road win since Nov. 23, 1999 when it won at Samford, 67-60. Additionally, it was the largest opening night road victory since Dec. 1, 1979 when it beat Nicholls State, 79-69

- ULM has 15 home games on the 2014-15 schedule, the most since 1985-86



ULM Warhawks Men's Basketball

University of Louisiana at Monroe



ULM Quick Notes Continued...

- The Warhawks were tabbed for sixth in the Sun Belt Conference Preseason Poll. They return three starters and six players overall on a team that more-than doubled both its overall and conference win totals

- Keith and Lance Richard have gone up against four other father/son duos this season. They Richard's took on Josiah/Eric Capaci at Champion Baptist, Billy/Billy Donovan at Florida, Cullen/Craig Neal at New Mexico and Ron/R.J. Hunter at Georgia State

- ULM brought back starting center Marvin Williams who ranked top-10 in the SBC in blocks last year. He tallied nine double-figure scoring games. Williams notched a 19-point performance against No. 5 Kansas and outscored both Andrew Wiggins and Joel Embiid, the first and third picks of the NBA draft

- The Warhawks enter the 2014-15 season without any APR penalties for the first time in five years. ULM head coach Keith Richard has turned the program around academically since inheriting APR sanctions when he took over at the helm, and the Warhawks have won back-to-back Sun Belt Conference academic awards

- For the first time since the NCAA instituted academic progress rate (APR) scores in 2003-04, the ULM men's basketball program tallied a perfect 1,000 score in the 2013-14 season. Over the summer, ULM was the only Division I institution in the state of Louisiana to earn the Team Academic Excellence award from the NABC

- The ULM men's basketball program will honor legendary former head coach Mike Vining by raising a banner featuring the number "402" in a special halftime ceremony during the Warhawks game on Saturday, Jan. 24, 2015 against Georgia Southern at Fant-Ewing Coliseum. The 402 represents the total number of Vining's regular season and post-season victories over his 24 seasons as ULM head coach from 1981-2005



Tylor Ongwae

HOME COURT ADVANTAGE

395-169 All-Time in Fant-Ewing Coliseum

ULM RECORDS IN FANT-EWING

Year	Games	Record	Pct.	Avg. Attend.
1971-72	10	6-4	.600	4,190
1972-73	11	8-3	.727	3,232
1973-74	11	8-3	.727	3,250
1974-75	12	11-1	.917	3,454
1975-76	13	10-3	.769	5,451
1976-77	13	9-4	.692	5,073
1977-78	13	10-3	.769	4,459
1978-79	16	15-1	.937	5,215
1979-80	14	10-4	.714	3,678
1980-81	16	8-8	.500	3,067
1981-82	16	13-3	.812	3,808
1982-83	14	12-2	.857	2,946
1983-84	16	11-5	.688	2,098
1984-85	13	9-4	.692	2,380
1985-86	15	14-1	.933	2,114
1986-87	13	8-5	.615	2,582
1987-88	12	10-2	.833	2,582
1988-89	12	8-4	.667	2,861
1989-90	14	13-1	.928	2,949
1990-91	14	14-0	1.000	3,327
1991-92	12	9-3	.750	2,710
1992-93	14	14-0	1.000	3,892
1993-94	14	10-4	.714	3,351
1994-95	12	9-3	.750	3,619
1995-96	11	8-3	.727	2,182
1996-97	12	9-3	.750	1,822
1997-98	11	7-4	.636	1,301
1998-99	11	7-4	.636	1,913
1999-00	14	11-3	.786	2,003
2000-01	13	9-4	.692	935
2001-02	12	12-0	1.000	3,437
2002-03	12	7-5	.583	1,412
2003-04	13	9-4	.692	1,624
2004-05	13	6-7	.462	1,296
2005-06	13	8-5	.615	793
2006-07	14	14-0	1.000	1,952
2007-08	12	5-7	.417	1,338
2008-09	14	8-6	.571	907
2009-10	14	8-6	.571	1,398
2010-11	13	4-9	.308	1,400
2011-12	13	0-13	.000	1,438
2012-13	12	3-9	.250	1,255
2013-14	12	6-6	.500	1,513
2014-15	5	5-0	1.000	1,095
TOTALS	564	395-169	.700	



ULM Warhawks Men's Basketball

University of Louisiana at Monroe



WE ARE ULM

12 REGULAR SEASON CHAMPIONSHIPS

1961-62 - Gulf States Conference
 1964-65 - Gulf States Conference
 1978-79 - Atlantic Sun Conference
 1979-80 - Atlantic Sun Conference
 1985-86 - Southland Conference
 1989-90 - Southland Conference
 1990-91 - Southland Conference
 1992-93 - Southland Conference
 1993-94 - Southland Conference
 1995-96 - Southland Conference
 1996-97 - Southland Conference
 2006-07 - Sun Belt Conference West Division

NINE POST-SEASON APPEARANCES

1978-79 - NIT
 1981-82 - NCAA Tournament
 1985-86 - NCAA Tournament
 1987-88 - NIT
 1989-90 - NCAA Tournament
 1990-91 - NCAA Tournament
 1991-92 - NCAA Tournament
 1992-93 - NCAA Tournament
 1995-96 - NCAA Tournament

EIGHT TOURNAMENT CHAMPIONSHIPS

1978-79 - Atlantic Sun Conference
 1981-82 - Atlantic Sun Conference
 1985-86 - Southland Conference
 1989-90 - Southland Conference
 1990-91 - Southland Conference
 1991-92 - Southland Conference
 1992-93 - Southland Conference
 1995-96 - Southland Conference

Numerical Roster

No.	Player	Pos.	Ht.	Wt.	Cl.	Hometown (Previous School)
0	Williams, Marvin	C	6-8	245	Sr.	Memphis, Tenn. (NW Florida State College)
1	Brown, Alex	G	6-4	185	Fr.	Vernon, Fla. (Vernon HS)
2	Harvey, DeMondre	F	6-7	210	Jr.	Minden, La. (Pearl River CC)
3	Cooper, Prince	G	6-4	215	So.	Freeport, Bahamas (Miami-Dade College)
4	Foster, Mack	G	6-2	185	Jr.	Beulah, Miss. (East Mississippi CC)
5	Samuel, Jamaal	F	6-9	205	Jr.	New Orleans, La. (Illinois State)
10	Taylor, Roderick	F	6-8	210	Fr.	Harker Heights, Texas (Harker Heights HS)
11	Coppola, Nick	G	5-11	190	So.	Richmond, Va. (Benedictine Prep)
12	Ongwae, Tylor	F	6-7	205	Sr.	Eldoret, Kenya (Ranger College)
13	Deng, Majok	F	6-10	190	Jr.	Adelaide, Australia (Indian Hills CC)
20	Amajoyi, Chinedu	G	6-3	195	Sr.	Rancho Cucamonga, Calif. (Kilgore College)
22	Richard, Lance	G	5-10	175	RFr.	Monroe, La. (Sterlington HS)
32	Roberson, Justin	G	6-1	185	Jr.	Natchitoches, La. (Western Texas)

COACHING STAFF

Head Coach: Keith Richard (ULM '82)
 Assistant Coach: Ryan Cross (Buffalo '95)
 Assistant Coach: Lonnie Cooper (Louisiana Tech '99)

Assistant Coach: J.A. Anglin (LSU Shreveport '10)
 Graduate Assistant: Luke Richard
 Team Manager: Gil Williams

PRONUNCIATION

Keith/Lance/Luke RICHARD Ree-SHARD
 CHINEDU OMAJOYI Chin-ih-due Om-uh-joy
 TYLOR ONGWAE Tie-ler Ong-why
 MAJOK Deng Muh-jook
 Justin ROBERSON Rob-er-sin
 Nick COPPOLA Cuh-pole-uh



BY CLASS

Seniors (3)..... Chinedu Amajoyi
 Tylor Ongwae
 Marvin Williams
 Juniors (5) Majok Deng
 Mack Foster
 DeMondre Harvey
 Justin Roberson
 Jamaal Samuel
 Sophomores (2) Prince Cooper
 Nick Coppola
 Freshmen (3)..... Alex Brown
 Lance Richard
 Roderick Taylor

BY POSITION

Guards (7) Chinedu Amajoyi
 Alex Brown
 Prince Cooper
 Nick Coppola
 Mack Foster
 Lance Richard
 Justin Roberson
 Forwards (5)..... Majok Deng
 DeMondre Harvey
 Tylor Ongwae
 Jamaal Samuel
 Roderick Taylor
 Center (1) Marvin Williams

BY STATE/COUNTRY

Australia..... Majok Deng
 Bahamas Prince Cooper
 California..... Chinedu Amajoyi
 Florida..... Alex Brown
 Kenya Tylor Ongwae
 Louisiana (4) DeMondre Harvey
 Lance Richard
 Justin Roberson
 Jamaal Samuel
 Mississippi..... Mack Foster
 Tennessee Marvin Williams
 Texas Roderick Taylor
 Virginia Nick Coppola



ULM Warhawks Men's Basketball

University of Louisiana at Monroe



ULM Quick Facts

Location _____ Monroe, La.
 Enrollment _____ 8,527
 Founded _____ 1931
 Nickname/Mascot _____ Warhawks/Ace
 Colors _____ Maroon & Gold
 President _____ Dr. Nick Bruno
 Director of Athletics _____ Brian Wickstrom
 Conference _____ Sun Belt
 Affiliation _____ NCAA Division I
 All-Time Record _____ 914-816 (63rd season)
 Winning Seasons _____ 38 (20+ wins 10 times)
 Home Venue _____ Fant-Ewing Coliseum (7000)
 Playing Surface _____ Maple
 Opened _____ 1971
 Press Row Phone _____ 318-342-6920

Head Coach _____ Keith Richard
 Record at ULM _____ 30-96 (fifth year)
 Career Record _____ 180-213 (14th year)
 Assistant Coach _____ Ryan Cross
 Assistant Coach _____ Lonnie Cooper
 Assistant Coach _____ J.A. Anglin
 Graduate Assistant _____ Luke Richard
 Team Manager _____ Gil Williams
 Athletic Trainer _____ Jeremy Teblum

Website _____ www.ulmwarhawks.com
 Facebook _____ www.facebook.com/warhawks
 Twitter _____ @ULM_MBB

All-Time Series History

vs. Arkansas State

Arkansas State leads, 33-22

At ULM: ULM leads, 17-8

At GSU: ASU leads, 24-5

On Neutral Courts: ASU leads, 1-0

ULM's Record by Starting Lineup

Coppola-Roberson-Ongwae-Samuel-Deng (1-0, 0-0 SBC)
 Coppola-Roberson-Ongwae-Deng-Harvey (3-1, 0-0 SBC)
 Coppola-Roberson-Ongwae-Deng-Williams (2-4, 0-0 SBC)
 Coppola-Amajoyi-Ongwae-Samuel-Harvey (0-1, 0-1 SBC)

Where ULM Ranks Nationally...

18th in 3FG% defense (.277)
 18th in fewest fouls (195)
 23rd in FG% defense (.374)
 32nd in blocks (5.3 bpg)
 40th in fouls per game (16.3 fpg)
 41st in fewest turnovers (146)
 Nick Coppola 40th in ast:turn ratio

Scouting Arkansas State

Arkansas State is off to a 1-1 start in Sun Belt Conference play and 6-5 overall. It opened league action with a 63-60 overtime victory on the road at South Alabama before falling on Saturday at home to Appalachian State, 74-73. The Red Wolves notched a marquee non-conference victory on Dec. 17 with a win over Mississippi State, 69-55.

Anthony Livingston leads the team with 16.8 points and 9.3 rebounds per game. He's also shooting .448 from 3FG (13-29). After two conference games, Livingston averages a double-double with 18.5 points and 13.0 rebounds per contest.

Cameron Golden and Sean Gardner also average in double-figures on the season with 14.8 and 14.5 points per game, respectively. PJ Hardwick has dished out 21 assists in two SBC outings.

John Brady is in his seventh season as head coach. In 2012-13, he led the Red Wolves to a 19-12 record as they claimed their second Sun Belt Conference West Division title in three years. The program's 19 victories were the most in a single season since the 1997-98 campaign. Brady led ASU to a conference regular season title in 2010-11 when it went 13-0 at home.

Prior to Arkansas State, Brady spent 10-plus seasons as LSU's head coach and guided the Tigers to six postseason berths, two SEC championships crowns and three SEC Western Division titles. He won SEC Coach of the Year honors twice.

2014-15 SBC Preseason

Poll (First-place votes in parenthesis)

1. Georgia State 121 (11)
2. UL-Lafayette 110
3. UALR 94
4. UT Arlington 75
5. Arkansas State 73
6. **ULM 69**
7. Texas State 43
8. Troy 42
- T-9. Georgia Southern 38
- T-9. South Alabama 38
11. Appalachian State 23

SUN BELT CONFERENCE PRESEASON TEAMS

Preseason First Team All-Conference

Jelani Hewitt (Georgia Southern, Senior, Guard)
 Ryan Harrow (Georgia State, Senior, Guard)
 R.J. Hunter (Georgia State, Junior, Guard)
 Shawn Long (UL Lafayette, Senior, Forward)
 Lonnie McClanahan (UT Arlington, Senior, Guard)

Preseason Second Team All-Conference

Josh Hagins (UALR, Junior, Guard)
 James White (UALR, Junior, Forward)
 Xavian Rimmer (UL Lafayette, Senior, Guard)
Tylor Ongwae (ULM, Senior, Forward)
 Emani Grant (Texas State, Junior, Forward)

Preseason Third Team All-Conference

Tab Hamilton (Appalachian State, Senior, Guard)
 Trent Wiedeman (Georgia Southern, Senior, Guard)
 Curtis Washington (Georgia State, Senior, Forward)
 Jamel Outler (UT Arlington, Senior, Guard)
 Kevin Thomas (Troy, Senior, Forward)

Preseason Player of the Year

R.J. Hunter (Georgia State, Junior, Guard)



SUN BELT
 CONFERENCE



ULM Warhawks Men's Basketball

University of Louisiana at Monroe



2014-15 ULM MEN'S BASKETBALL

ULM Combined Team Statistics (as of Dec 30, 2014)

All games

Overall Stats

RECORD:	OVERALL	HOME	AWAY	NEUTRAL
ALL GAMES	6-6	5-0	1-4	0-2
CONFERENCE	0-1	0-0	0-1	0-0
NON-CONFERENCE	6-5	5-0	1-3	0-2

#	Player	gp-gs	min	avg	Total		3-Point		F-Throw		Rebounds										pts	avg
					fg-fga	fg%	3fg-fga	3fg%	ft-fa	ft%	off	def	tot	avg	pf	dq	a	to	blk	stl		
12	Ongwae, Tylor	12-12	381	31.8	67-143	.469	3-15	.200	38-45	.844	30	43	73	6.1	31	1	35	26	4	8	175	14.6
11	Coppola, Nick	12-12	400	33.3	43-95	.453	21-47	.447	16-23	.696	3	25	28	2.3	24	1	52	19	0	13	123	10.3
32	Roberson, Justin	12-11	318	26.5	44-96	.458	3-13	.231	15-21	.714	4	40	44	3.7	29	2	29	25	2	15	106	8.8
13	Deng, Majok	12-11	303	25.3	33-83	.398	7-29	.241	19-26	.731	20	64	84	7.0	21	0	12	13	22	7	92	7.7
05	Samuel, Jamaal	12-2	241	20.1	34-87	.391	12-41	.293	10-16	.625	9	41	50	4.2	23	0	7	16	14	8	90	7.5
00	Williams, Marvin	11-6	195	17.7	24-51	.471	1-3	.333	17-28	.607	15	24	39	3.5	26	0	4	14	10	4	66	6.0
04	Foster, Mack	12-0	174	14.5	22-51	.431	7-21	.333	4-8	.500	6	8	14	1.2	17	0	16	5	3	10	55	4.6
02	Harvey, DeMondre	12-5	210	17.5	23-40	.575	0-0	.000	9-15	.600	22	30	52	4.3	13	0	4	9	7	2	55	4.6
22	Richard, Lance	11-0	39	3.5	6-20	.300	5-19	.263	0-0	.000	0	3	3	0.3	3	0	0	2	1	2	17	1.5
03	Cooper, Prince	8-0	81	10.1	4-13	.308	0-0	.000	1-6	.167	5	9	14	1.8	1	0	7	6	1	2	9	1.1
20	Amajoyi, Chinedu	9-1	83	9.2	4-15	.267	0-5	.000	2-2	1.000	1	7	8	0.9	7	0	10	7	0	1	10	1.1
Team											24	18	42					4				
Total.....		12	2425		304-694	.438	59-193	.306	131-190	.689	139	312	451	37.6	195	4	176	146	64	72	798	66.5
Opponents.....		12	2427		262-700	.374	64-231	.277	145-197	.736	150	277	427	35.6	182	-	144	148	43	70	733	61.1

TEAM STATISTICS	ULM	OPP
SCORING	798	733
Points per game	66.5	61.1
Scoring margin	+5.4	-
FIELD GOALS-ATT	304-694	262-700
Field goal pct	.438	.374
3 POINT FG-ATT	59-193	64-231
3-point FG pct	.306	.277
3-pt FG made per game	4.9	5.3
FREE THROWS-ATT	131-190	145-197
Free throw pct	.689	.736
F-Throws made per game	10.9	12.1
REBOUNDS	451	427
Rebounds per game	37.6	35.6
Rebounding margin	+2.0	-
ASSISTS	176	144
Assists per game	14.7	12.0
TURNOVERS	146	148
Turnovers per game	12.2	12.3
Turnover margin	+0.2	-
Assist/turnover ratio	1.2	1.0
STEALS	72	70
Steals per game	6.0	5.8
BLOCKS	64	43
Blocks per game	5.3	3.6
ATTENDANCE	5474	34102
Home games-Avg/Game	5-1095	5-5908
Neutral site-Avg/Game	-	2-2281

Score by Periods	1st	2nd	OT	Totals
ULM	386	407	5	798
Opponents	321	402	10	733

Date	Opponent		Score	Att.
11/15/14	at UAB	W	74-65	2403
11/17/14	CHAMPION BAPTIST	W	106-39	1078
11/21/14	at Florida	Lot	56-61	11003
11/26/14	vs Coastal Carolina	L	48-61	2426
11/27/14	vs Robert Morris	L	54-71	2136
12/6/14	LOUISIANA COLLEGE	W	83-55	1053
12/09/14	NORTHWESTERN STATE	W	82-74	1082
12/13/14	at New Mexico	L	46-54	13710
12/16/14	CENTRAL BAPTIST	W	78-53	1060
12/19/14	LSUA	W	76-71	1201
12/21/14	at Samford	L	50-64	1053
* 12/30/14	at Georgia State	L	45-65	1371

* = Conference game

On the Season in the SBC, ULM Ranks...

First in FG percentage defense: .374 (262-700)

First in 3FG percentage defense: .277 (64-231)

First in blocked shots: 5.3 bpg

Second in assist:turnover ratio: 1.2

Nick Coppola is third in assists: 4.3 apg

Nick Coppola is third in assist:turnover ratio: 2.7

Majok Deng is third in blocks: 1.8 bpg

Majok Deng is third in defensive rebounds: 5.3 drpg

Tylor Ongwae is third in free throw percentage: .844 (38-45)



ULM Warhawks Men's Basketball

University of Louisiana at Monroe



2014-15 ULM MEN'S BASKETBALL

ULM Combined Team Statistics (as of Dec 31, 2014)

Conference games

Conference Stats

RECORD:	OVERALL	HOME	AWAY	NEUTRAL
ALL GAMES	0-1	0-0	0-1	0-0
CONFERENCE	0-1	0-0	0-1	0-0
NON-CONFERENCE	0-0	0-0	0-0	0-0

#	Player	gp-gs	min	avg	Total		3-Point		F-Throw		Rebounds				pf	dq	a	to	blk	stl	pts	avg
					fg-fga	fg%	3fg-fga	3fg%	ft-fa	ft%	off	def	tot	avg								
05	Samuel, Jamaal	1-1	26	26.0	4-12	.333	1-4	.250	0-1	.000	0	5	5	5.0	0	0	2	1	0	0	9	9.0
04	Foster, Mack	1-0	14	14.0	2-5	.400	1-3	.333	2-2	1.000	0	1	1	1.0	0	0	1	0	0	0	7	7.0
00	Williams, Marvin	1-0	17	17.0	1-3	.333	0-0	.000	5-6	.833	2	4	6	6.0	2	0	1	3	0	0	7	7.0
11	Coppola, Nick	1-1	29	29.0	2-4	.500	2-3	.667	0-0	.000	0	4	4	4.0	1	0	3	1	0	2	6	6.0
13	Deng, Majok	1-0	17	17.0	3-9	.333	0-2	.000	0-1	.000	4	4	8	8.0	1	0	1	1	1	0	6	6.0
22	Richard, Lance	1-0	5	5.0	1-2	.500	1-2	.500	0-0	.000	0	0	0	0.0	0	0	0	1	0	0	3	3.0
02	Harvey, DeMondre	1-1	20	20.0	1-4	.250	0-0	.000	1-2	.500	2	2	4	4.0	1	0	0	0	0	0	3	3.0
03	Cooper, Prince	1-0	18	18.0	1-2	.500	0-0	.000	0-2	.000	0	1	1	1.0	0	0	2	2	0	1	2	2.0
20	Amajoyi, Chinedu	1-1	19	19.0	0-0	.000	0-0	.000	2-2	1.000	0	0	0	0.0	0	0	1	1	0	1	2	2.0
32	Roberson, Justin	1-0	13	13.0	0-5	.000	0-1	.000	0-1	.000	0	0	0	0.0	2	0	0	0	0	0	0	0.0
12	Ongwae, Tylor	1-1	22	22.0	0-7	.000	0-2	.000	0-0	.000	0	0	0	0.0	3	0	2	1	0	1	0	0.0
Team											3	1	4									
Total.....		1	200		15-53	.283	5-17	.294	10-17	.588	11	22	33	33.0	10	0	13	11	1	5	45	45.0
Opponents.....		1	200		24-54	.444	4-18	.222	13-16	.813	9	30	39	39.0	14	-	18	7	2	7	65	65.0

TEAM STATISTICS	ULM	OPP
SCORING	45	65
Points per game	45.0	65.0
Scoring margin	-20.0	-
FIELD GOALS-ATT	15-53	24-54
Field goal pct	.283	.444
3 POINT FG-ATT	5-17	4-18
3-point FG pct	.294	.222
3-pt FG made per game	5.0	4.0
FREE THROWS-ATT	10-17	13-16
Free throw pct	.588	.813
F-Throws made per game	10.0	13.0
REBOUNDS	33	39
Rebounds per game	33.0	39.0
Rebounding margin	-6.0	-
ASSISTS	13	18
Assists per game	13.0	18.0
TURNOVERS	11	7
Turnovers per game	11.0	7.0
Turnover margin	-4.0	-
Assist/turnover ratio	1.2	2.6
STEALS	5	7
Steals per game	5.0	7.0
BLOCKS	1	2
Blocks per game	1.0	2.0
ATTENDANCE	0	1371
Home games-Avg/Game	0-0	1-1371
Neutral site-Avg/Game	-	0-0

Score by Periods	1st	2nd	Totals
ULM	26	19	45
Opponents	23	42	65

Date	Opponent	Score	Att.
* 12/30/14	at Georgia State	L 45-65	1371

* = Conference game

In SBC Games Only, ULM Ranks...

Second in 3FG percentage defense: .222 (4-18)

Third in defensive rebounding percentage: .710

Nick Coppola is second in 3FG percentage: .667 (2-3)

Majok Deng is second in offensive rebounds (4.0 orpg)

Majok Deng is fourth in rebounding (8.0 rpg)



ULM Warhawks Men's Basketball

University of Louisiana at Monroe



2014-15 ULM MEN'S BASKETBALL

ULM Team High/Low Analysis (as of Jan 01, 2015)

All games

ULM - TEAM GAME HIGHS

POINTS	106	CHAMPION BAPTIST (11/17/14)
	83	LOUISIANA COLLEGE (12/6/14)
	82	NORTHWESTERN STATE (12/09/14)
	78	CENTRAL BAPTIST (12/16/14)
	76	LSUA (12/19/14)
FIELD GOALS MADE	41	CHAMPION BAPTIST (11/17/14)
	35	LOUISIANA COLLEGE (12/6/14)
FIELD GOAL ATTEMPTS	69	CHAMPION BAPTIST (11/17/14)
	67	at UAB (11/15/14)
FIELD GOAL PERCENTAGE	.594 (41-69)	CHAMPION BAPTIST (11/17/14)
	.574 (31-54)	NORTHWESTERN STATE (12/09/14)
3 PT FIELD GOALS MADE	9	at Florida (11/21/14)
	9	CHAMPION BAPTIST (11/17/14)
3 PT FG ATTEMPTS	25	vs Coastal Carolina (11/26/14)
	25	at Florida (11/21/14)
3 PT FG PERCENTAGE	.600 (6-10)	at Samford (12/21/14)
	.375 (9-24)	CHAMPION BAPTIST (11/17/14)
	.375 (6-16)	at UAB (11/15/14)
	.375 (3-8)	NORTHWESTERN STATE (12/09/14)
FREE THROWS MADE	17	LSUA (12/19/14)
	17	NORTHWESTERN STATE (12/09/14)
FREE THROW ATTEMPTS	24	CHAMPION BAPTIST (11/17/14)
	23	LSUA (12/19/14)
	23	NORTHWESTERN STATE (12/09/14)
FREE THROW PERCENTAGE	.846 (11-13)	at New Mexico (12/13/14)
	.800 (12-15)	at UAB (11/15/14)
REBOUNDS	48	CHAMPION BAPTIST (11/17/14)
	47	NORTHWESTERN STATE (12/09/14)
ASSISTS	21	LOUISIANA COLLEGE (12/6/14)
	21	CHAMPION BAPTIST (11/17/14)
STEALS	14	CHAMPION BAPTIST (11/17/14)
	12	LOUISIANA COLLEGE (12/6/14)
BLOCKED SHOTS	10	CHAMPION BAPTIST (11/17/14)
	8	NORTHWESTERN STATE (12/09/14)
TURNOVERS	20	LOUISIANA COLLEGE (12/6/14)
	15	NORTHWESTERN STATE (12/09/14)
	15	vs Robert Morris (11/27/14)

ULM Career Double-Doubles

Tylor Ongwae (4)

27 points, 11 rebs vs. UL-L (1/4/14)
 27 points, 10 rebs vs. Ga. State (1/25/14)
 16 points, 11 rebs at UL-L (2/1/14)
 19 points, 10 rebs vs. NSU (12/9/14)*

Marvin Williams (2)

13 points, 11 rebs at NSU (11/21/13)
 11 points, 13 rebs at ASU (3/6/14)

Majok Deng (3)

14 points, 10 rebs vs. Coastal Carolina (11/26/14)*
 14 points, 11 rebs vs. Louisiana College (12/6/14)*
 11 points, 11 rebs vs. Central Baptist (12/16/14)*

Nick Coppola (1)

12 points, 12 assists vs. Louisiana College (12/6/14)*

DeMondre Harvey (1)

12 points, 10 rebs, vs. NSU (12/9/14)*

* indicates this season



ULM Warhawks Men's Basketball

University of Louisiana at Monroe



SUN BELT CONFERENCE STANDINGS

As of 1/5/15

School	SBC	Pct.	Overall	Pct.	Streak
T-1. Georgia State	2-0	1.000	9-4	.692	W5
T-1. UT Arlington	2-0	1.000	8-4	.667	W5
T-1. UL Lafayette	2-0	1.000	8-5	.615	W2
4. Appalachian State	1-0	1.000	4-6	.400	W1
T-5. Georgia Southern	1-1	.500	8-3	.727	W1
T-5. Texas State	1-1	.500	7-4	.636	L1
T-5. Arkansas State	1-1	.500	6-5	.545	L1
8. ULM	0-1	.000	6-6	.500	L2
T-9. Troy	0-2	.000	5-6	.455	L2
T-9. UALR	0-2	.000	5-7	.417	L2
T-9. South Alabama	0-2	.000	2-10	.167	L7

Saturday's Results

Georgia State 82, UALR 69
 UT Arlington 99, South Alabama 87
 UL Lafayette 91, Troy 64
 App State 74, Arkansas State 73
 Georgia Southern 40, Texas State 36

Monday's Games

Texas State at Georgia State, 6:00 PM
 UL-Lafayette at App. State, 6:30 PM
 Arkansas State at ULM, 7:00 PM
 UT Arlington at Troy, 7:30 PM
 South Alabama at UALR, 7:30 PM

Player Career Totals

Name	Career 10+ Points	Career 10+ Rebs	Career 10+ Asts
Tylor Ongwae	31 times (20+ 12 times)	4 times	
Nick Coppola	16 times		1 time
Marvin Williams	12 times	2 times	
Jamaal Samuel	4 times		
Chinedu Amajoyi	3 times		
DeMondre Harvey	2 times	1 time	
Name	Season 10+ Points	Season 10+ Rebs	Season 10+ Asts
Tylor Ongwae	7 times (20+ 3 times)	1 time	
Nick Coppola	7 times		1 time
Majok Deng	5 times	3 times	
Justin Roberson	5 times		
Marvin Williams	3 times		
Jamaal Samuel	3 times		
DeMondre Harvey	1 time	1 time	
Mack Foster	1 time		

Single-Game Categorical Highs 2014-15

Points	Tylor Ongwae - 25, two times, vs. CEBC/LSUA
Field Goals Made	Tylor Ongwae - 10, vs. Central Baptist
3FG Made	3, five times
Free Throws Made	Tylor Ongwae - 7, vs. Northwestern State
Rebounds	Majok Deng - 11, two times
Assists	Nick Coppola - 12, vs. Louisiana College
Steals	Mack Foster - 4, vs. Louisiana College
Blocks	Majok Deng/Jamaal Samuel - 4, at UAB/vs. C. Car.
Minutes	Nick Coppola - 45, at No. 8 Florida

Number of times in 2014-15 a ULM student-athlete has led the team in...

Player	Points	Rebs	Assists	FGM	FGA	FTM	FTA	3FGM	3FGA	Blocks	Steals	Mins
Tylor Ongwae	6	4	5	7	8	6	5	2		1	2	3
Nick Coppola	2		6	1		1	1	9	7		4	7
Jamaal Samuel	2	2		1	2			2	3	2	4	
Majok Deng	1	6	1	2	2	2	3	2	3	7	2	
Marvin Williams	1	1		1	1	2	4			3	1	
Justin Roberson	1	2	2	2	1	2	2				5	1
DeMondre Harvey		2	1							1	1	
Mack Foster			1				1	3		1	3	1
Lance Richard								1	2			
Chinedu Amajoyi			1									
Prince Cooper												1

Note: If multiple student-athletes tie in a category in a single game, they all receive credit for leading the team



ULM Warhawks Men's Basketball

University of Louisiana at Monroe



In ULM's Last Outing...

ULM Drops SBC Opener to Defending Champion Georgia State

ATLANTA – The ULM men's basketball program led 26-23 at the intermission, but Georgia State used a big 20-1 second half run to pull away and take a 65-45 decision on Tuesday at GSU Sports Arena in the Sun Belt Conference opener.

Junior Jamaal Samuel led ULM (6-6, 0-1 SBC) with nine points while junior Majok Deng grabbed a team-high eight rebounds.

The Panthers (8-4, 1-0 SBC), who won the SBC regular season last season and were picked to win the league again in the Preseason Poll, shot .575 (15-26) in the second half to surge. GSU was led by 2013-14 SBC Player of the Year R.J. Hunter who scored 18 points. Markus Crider notched a double-double with 13 points and 10 rebounds.

The Warhawks led 8-7 early when junior Mack Foster and sophomore Nick Coppola hit three-pointers to fuel a 7-0 run to go up 15-7 with 8:27 remaining. A bucket by junior Majok Deng in the post increased the lead to 17-9 with 7:49 left.

The Panthers answered with an 11-0 run after a trio of long-range shots to take a 20-17 edge at the 4:53 mark. ULM responded and closed the half strong, and after a buzzer-beater lay-up on the fast-break by Foster, the Warhawks went into the half leading, 26-23.

On ULM's first possession of the second half, Coppola drilled another three-pointer to up the advantage to 29-23.

The Panthers came back firing and took their first lead of the half, 36-35, with 14:24 left. GSU used a 20-1 run to go up, 52-36 at the 6:37 mark. ULM went 10:19 without a field goal before Samuel put one in with 6:18 left.

Official Basketball Box Score -- Game Totals -- Final Statistics ULM vs Georgia State 12/30/14 7:00 p.m. at GSU Sports Arena/Atlanta, Ga.

ULM 45 • 6-6, 0-1 SBC

#	Player	Total		3-Ptr		Rebounds			PF	TP	A TO Blk Stl					Min
		FG-FGA	FG-FGA	FT-FTA	Off Def Tot	PF	TP	A TO Blk Stl								
02	Harvey, DeMondre	f	1-4	0-0	1-2	2	2	4	1	3	0	0	0	0	0	20
05	Samuel, Jamaal	f	4-12	1-4	0-1	0	5	5	0	9	2	1	0	0	0	26
12	Ongwae, Tylor	f	0-7	0-2	0-0	0	0	0	3	0	2	1	0	1	2	22
11	Coppola, Nick	g	2-4	2-3	0-0	0	4	4	1	6	3	1	0	2	29	29
20	Amajoyi, Chinedu	g	0-0	0-0	2-2	0	0	0	0	2	1	1	0	1	19	19
00	Williams, Marvin	g	1-3	0-0	5-6	2	4	6	2	7	1	3	0	0	17	17
03	Cooper, Prince	g	1-2	0-0	2-2	0	1	1	0	2	2	2	0	1	18	18
04	Foster, Mack	g	2-5	1-3	2-2	0	1	1	0	7	1	0	0	0	14	14
13	Deng, Majok	g	3-9	0-2	0-1	4	4	8	1	6	1	1	1	0	17	17
22	Richard, Lance	g	1-2	1-2	0-0	0	0	0	0	3	0	1	0	0	5	5
32	Roberson, Justin	g	0-5	0-1	0-1	0	0	0	2	0	0	0	0	0	13	13
Team						3	1	4								
Totals			15-53	5-17	10-17	11	22	33	10	45	13	11	1	5	200	

FG % 1st Half: 8-24 33.3% 2nd half: 7-29 24.1% Game: 15-53 28.3%
3FG % 1st Half: 3-6 50.0% 2nd half: 2-11 18.2% Game: 5-17 29.4%
FT % 1st Half: 7-10 70.0% 2nd half: 3-7 42.9% Game: 10-17 58.8%

Deadball
Rebounds
4

Georgia State 65 • 8-4, 1-0 SBC

#	Player	Total		3-Ptr		Rebounds			PF	TP	A TO Blk Stl					Min
		FG-FGA	FG-FGA	FT-FTA	Off Def Tot	PF	TP	A TO Blk Stl								
33	Crider, Markus	f	5-8	0-0	3-4	3	7	10	3	13	0	0	0	2	28	28
42	Washington, Curtis	f	1-3	0-0	0-0	2	3	5	1	2	0	0	0	0	11	11
02	Green, Ryann	g	3-5	1-3	0-0	1	4	5	2	7	3	2	0	1	21	21
22	Hunter, R.J.	g	5-11	2-7	6-7	0	3	3	0	18	3	0	1	2	37	37
55	Harrow, Ryan	g	3-14	0-4	1-1	0	1	1	2	7	8	2	0	0	36	36
00	Ware, Kevin	g	3-6	0-1	3-4	0	1	1	1	9	2	1	0	1	22	22
04	Dennis, Isaiah	g	1-1	0-0	0-0	0	0	0	0	2	2	0	0	0	1	1
15	Brown, Jalen	g	1-3	1-3	0-0	0	5	5	1	3	0	1	0	1	26	26
23	Session, Jordan	g	2-3	0-0	0-0	2	5	7	4	4	2	1	1	0	17	17
34	Cagle, Carter	g	0-0	0-0	0-0	0	0	0	0	0	0	0	0	0	1	1
Team						1	1	2								
Totals			24-54	4-18	13-16	9	30	39	14	65	18	7	2	7	200	

FG % 1st Half: 9-28 32.1% 2nd half: 15-26 57.7% Game: 24-54 44.4%
3FG % 1st Half: 3-11 27.3% 2nd half: 1-7 14.3% Game: 4-18 22.2%
FT % 1st Half: 2-4 50.0% 2nd half: 11-12 91.7% Game: 13-16 81.3%

Deadball
Rebounds
2

Officials: Gary Maxwell, Todd Austin, Glen Tuit
Technical fouls: ULM-None, Georgia State-None.
Attendance: 1371

Score by periods	1st	2nd	Total
ULM	26	19	45
Georgia State	23	42	65

Points	In	Off	2nd	Fast	Bench
ULM	20	8	6	2	25
GSU	32	19	10	6	18

Score tied - 6 times.
Lead changed - 3 times.

The Last Time ULM Played ASU...

ULM Drops Hard Fought Battle at ASU

JONESBORO, Ark. (3/6/14) – After trailing by 13 points at half, the ULM men's basketball program came all the way back to tie the game with 3:59 remaining, but a late run by Arkansas State gave it the final 64-58 edge Thursday at the Convocation Center.

Despite the outcome, ULM (9-16, 6-11 SBC) clinched a spot in the Sun Belt Conference Championships as Texas State (4-13 SBC) fell to South Alabama and Troy (5-12 SBC) lost to UT Arlington in double-overtime. The Warhawks currently sit in seventh-place in the standings.

Junior Marvin Williams registered a double-double for ULM with 11 points and a career-high 13 rebounds. Junior Tylor Ongwae led the team in scoring with 14 points and also grabbed six rebounds.

ASU (18-11, 10-7 SBC) was led by Melvin Johnson III's 17 points and five rebounds. Ed Townsel pitched in with 13 points and Kendrick Washington put in 12 points.

At the 16:33 mark in the second half, sophomore Daniel Grieves cleanly boxed out a missed shot and a personal foul was called on ASU's Kirk Van Slyke for going over-the-back. After the play, arms were tangled and both players fell to the floor still trying to hold possession. A scrum broke out, resulting in a double technical foul. Van Slyke got up and made a stomping motion and was additionally dismissed from the contest.

ULM trailed 46-41 with 5:57 and kept battling as Ongwae drilled a three-pointer to make it a two-point game. A long-range shot by freshman Nick Coppola levelled the game, 47-47, with 3:59 to go.

ASU went on a 7-0 run to spurt ahead 54-47, and was able to hang on despite a pair of late three-pointers by Grieves.

Official Basketball Box Score -- Game Totals -- Final Statistics ULM vs Arkansas State 3/6/14 7:05 PM at Jonesboro, Ark. (Convocation Center)

ULM 58 • 9-16 (6-11)

#	Player	Total		3-Ptr		Rebounds			PF	TP	A TO Blk Stl					Min
		FG-FGA	FG-FGA	FT-FTA	Off Def Tot	PF	TP	A TO Blk Stl								
01	James,Jayon	f	3-3	0-0	1-5	1	2	3	5	7	3	4	1	2	26	26
12	Ongwae,Tylor	f	5-13	1-3	3-6	2	4	6	3	14	2	4	1	1	38	38
00	Williams,Marvin	c	4-9	0-0	3-4	6	7	13	4	11	0	2	0	1	35	35
11	Coppola,Nick	g	3-9	1-5	2-2	1	2	3	5	9	0	4	0	0	35	35
13	Amajoyi,Chinedu	g	0-7	0-6	2-2	1	7	8	1	2	1	1	0	1	36	36
02	Harvey,DeMondre	g	0-1	0-0	0-0	0	1	1	0	0	0	0	0	0	4	4
04	McCray,RJ	g	3-6	1-1	0-0	0	0	0	1	7	0	1	0	0	10	10
15	Koszuta,Kyle	g	0-0	0-0	0-0	0	0	0	0	0	0	0	0	0	0+	0+
23	Brown,Millaun	g	0-0	0-0	0-0	0	0	0	0	0	0	0	0	0	1	1
33	Grieves,Daniel	g	3-5	2-4	0-0	0	3	3	4	8	0	0	1	0	15	15
Team						1	1	2								
Totals			21-53	5-19	11-19	12	27	39	23	58	6	16	3	5	200	

FG % 1st Half: 8-21 38.1% 2nd half: 13-32 40.6% Game: 21-53 39.6%
3FG % 1st Half: 1-6 16.7% 2nd half: 4-13 30.8% Game: 5-19 26.3%
FT % 1st Half: 3-6 50.0% 2nd half: 8-13 61.5% Game: 11-19 57.9%

Deadball
Rebounds
4

Arkansas State 64 • 18-11 (10-7)

#	Player	Total		3-Ptr		Rebounds			PF	TP	A TO Blk Stl					Min
		FG-FGA	FG-FGA	FT-FTA	Off Def Tot	PF	TP	A TO Blk Stl								
20	Kirk Van Slyke	f	3-8	0-3	1-1	2	1	3	3	7	0	1	1	0	23	23
40	Kendrick Washington	f	4-10	0-1	4-6	1	8	9	2	12	1	1	0	2	34	34
00	Cameron Golden	g	0-4	0-2	0-0	1	3	4	2	0	2	0	0	2	32	32
24	Ed Townsel	g	5-11	3-6	0-1	0	0	0	2	13	0	1	0	2	37	37
31	Melvin Johnson III	g	4-12	3-7	6-6	1	4	5	3	17	2	4	0	1	35	35
01	Rakeem Dickerson	g	2-3	0-0	4-7	0	2	2	1	8	1	1	0	2	8	8
03	Brandon Reed	g	2-4	1-2	0-0	0	2	2	0	5	2	2	0	0	10	10
14	Kelvin Downs	g	0-1	0-0	2-4	0	1	1	4	2	1	0	0	0	21	21
Team						6	3	9								
Totals			20-53	7-21	17-25	11	24	35	17	64	9	11	1	9	200	

FG % 1st Half: 12-26 46.2% 2nd half: 8-27 29.6% Game: 20-53 37.7%
3FG % 1st Half: 4-11 36.4% 2nd half: 3-10 30.0% Game: 7-21 33.3%
FT % 1st Half: 5-8 62.5% 2nd half: 12-17 70.6% Game: 17-25 68.0%

Deadball
Rebounds
3

Officials: Patrick Adams, Coy Gammon, Todd Austin
Technical fouls: ULM-None, Arkansas State-Kirk Van Slyke.
Attendance: 2329
16:33 Double Technical Foul #20 A-State and #33 ULM, #20 Kirk Van Slyke Ejected

Score by periods	1st	2nd	Total
ULM	20	38	58
Arkansas State	33	31	64

Points	In	Off	2nd	Fast	Bench
ULM	26	14	8	4	15
ASTATE	24	16	8	4	15

Last FG - ULM 2nd-00:07, ASTATE 2nd-00:09.
Largest lead - ULM by 2 1st-19:40, ASTATE by 13 1st-05:40.

Score tied - 4 times.
Lead changed - 3 times.



ULM Warhawks Men's Basketball

University of Louisiana at Monroe



The Last Time ULM...

Scored 100 or more points
 Scored 90 or more points
 Scored 80 or more points
 Scored fewer than 40 points
 Held an opponent to under 50 points
 Held an opponent to under 40 points
 Won by 30 or more points
 Won by 40 or more points
 Won by 50 or more points
 Won by 60 or more points
 Had four double-digit scorers
 Had five double-digit scorers
 Had no double-digit scorers
 Had 20 or more assists
 Had fewer than 10 assists
 Had 10 or more blocks
 Had 10 or more steals
 Had 25 or more turnovers
 Had fewer than 10 turnovers
 Made 30 or more field goals
 Made 40 or more field goals
 Made 50 or more field goals
 Shot over 60 pct from field
 Shot less than 20 pct from field
 Made 10 or more 3-pointers
 Made 15 or more 3-pointers
 Shot over 50 pct from 3FG
 Shot over 60 pct from 3FG
 Shot less than 20 pct from 3FG
 Made 20 or more free throws
 Made 30 or more free throws
 Shot over 80 pct free throws
 Shot over 90 pct free throws
 Won on a buzzer beater
 Lost on a buzzer beater
 Won on the last possession
 Lost on the last possession
 Won in overtime
 Won in double overtime
 Won in triple overtime
 Had two double-doubles in one game
 Had two 20+ scorers in one game

106, vs. Champion Baptist (11/17/14)
 106, vs. Champion Baptist (11/17/14)
 82, vs. Northwestern State (12/9/14)
 36, vs. Texas State (1/11/2014)
 39, vs. Champion Baptist (11/17/14)
 39, vs. Champion Baptist (11/17/14)
 67, vs. Champion Baptist (11/17/14)
 67, vs. Champion Baptist (11/17/14)
 67, vs. Champion Baptist (11/17/14)
 67, vs. Champion Baptist (11/17/14)
 4, vs. Central Baptist (12/16/14)
 5, vs. Northwestern State (12/9/14)
 at Georgia State (12/30/14)
 20, vs. Northwestern State (12/9/14)
 6, at New Mexico (12/13/14)
 10, vs. Champion Baptist (11/17/14)
 12, vs. Louisiana College (12/6/14)
 29, at Northwestern State (11/21/2013)
 9, vs. South Alabama (2/27/2014)
 30, vs. Central Baptist (12/16/14)
 41, vs. Champion Baptist (11/17/14)
 51, vs. Georgia Southern (2/8/1979)
 .620 (31-50), at Nicholls State (11/28/2011)
 .185 (10-54) at No. 3 Ohio State (12/27/2013)
 10, at UT Arlington (1/9/2014)
 15, vs. Middle Tennessee (1/24/2008)
 .600 (6-10), at Samford (12/21/2014)
 .643 (9-14), at Troy (1/16/2014)
 .158 (3-19), at New Mexico (12/13/14)
 24, vs. UL-Lafayette (1/4/2014)
 30, vs. Troy (12/31/2009)
 .846 (11-13), at New Mexico (12/13/14)
 1.000 (5-5), at Texas A&M (12/10/2011)
 W, 60-58, vs. SFA (Malcolm Thomas Jumper) (11/25/2008)
 L, 76-73, at La. Tech (Kyle Gibson 3FG) (12/2/2009)
 W, 66-65, at UALR (Pair of defensive stands) (3/10/2014)
 L, 65-64, vs. SFA (Zac Downing 3FG, 4 secs) (11/23/2010)
 W, 103-98 (2OT), vs. UL-Lafayette (1/4/2014)
 W, 103-98 (2OT), vs. UL-Lafayette (1/4/2014)
 W, 107-106 (3OT), at La. Tech (1/5/1970)
 Tylor Ongwae & DeMondre Harvey, vs. Northwestern State (12/9/14)
 Tylor Ongwae (25) & Amos Olatayo (20), at UT Arlington (1/9/2014)

A ULM Player...

Had a double-double (pts-rbs)
 Had a double-double (pts-asts)
 Had a triple-double
 Had 20 points or more
 Had 30 points or more
 Had 40 points or more
 Had 50 points or more
 Made 10 or more field goals
 Made 15 or more field goals
 Made five or more 3FG
 Made 10 or more FT
 Had 10 or more rebounds
 Had 15 or more rebounds
 Had 20 or more rebounds
 Had 25 or more rebounds
 Had 30 or more rebounds
 Had 10 or more assists
 Had 15 or more assists
 Had five or more steals
 Had 10 or more steals
 Had five or more blocks
 Had 10 or more blocks
 Played 40 minutes or more

Majok Deng (11 pts, 11 rebs), vs. Central Baptist (12/16/14)
 Nick Coppola (12 pts, 12 asts), vs. Louisiana College (12/6/14)
 Wojciech Mydra (11 pts, 10 rebs, 10 blks) vs. SHSU (1/24/2002)
 Tylor Ongwae (25), vs. LSU-Alexandria (12/19/14)
 Amos Olatayo (30), at Northwestern State (11/21/2013)
 Henry Steele (40), vs. Louisiana College (1/23/1971)
 Glynn Saulters (51), vs. Nicholls State (1/1/1968)
 Tylor Ongwae (10), vs. Central Baptist (12/16/14)
 Mike Smith (15), vs. Houston (12/15/1999)
 Trent Mackey (5), vs. North Texas (2/14/2013)
 Chinedu Amajoyi (10-12), vs. Arkansas State (1/30/2014)
 Majok Deng (11), vs. Central Baptist (12/16/14)
 Lance Brasher (17), vs. Middle Tennessee (1/24/2008)
 DeAndre Alexander (20), vs. Lamar (3/2/2005)
 Calvin Natt (25), vs. Miss. State (12/5/1978)
 Calvin Natt (31) vs. Georgia Southern (12/29/1976)
 Nick Coppola (12), vs. Louisiana College (12/6/14)
 Jayon James (15), at FIU (2/2/2013)
 Tylor Ongwae (5), vs. UALR (2/15/2014)
 Arthur Hayes (10), vs. McNeese State (1983)
 Jayon James (5), vs. UALR (2/15/2014)
 Wojciech Mydra (13), vs. UTSA (3/2/2002)
 Nick Coppola (40), vs. LSU-Alexandria (12/19/14)

MISCELLANEOUS STATS 2014-15

Largest halftime lead

35 (53-18), vs. Champion Baptist (11/17/14)

Largest halftime deficit

11 (37-26), vs. Robert Morris (11/27/14)

Largest halftime lead surrendered in a loss

3 (26-23), at Georgia State (12/30/14)

Largest halftime deficit overcome in a win

N/A

Largest lead any time

67 (106-39), vs. Champion Baptist (11/17/14)

Largest deficit any time

20, (65-45) at Georgia State (12/30/14)

Largest lead surrendered in a loss

12, at No. 8 Florida (11/21/14)

Largest deficit overcome in a win

7, vs. LSU-Alexandria (12/19/14)

Most points scored in a half

53, vs. Champion Baptist (11/17/14)

Fewest points scored in a half

19, two times

Most points allowed in a half

44, two times (vs. NSU/LSUA)

Fewest points allowed in a half

18, first half vs. Champion Baptist (11/17/14)

Largest Rebounding Advantage

+27 (48-21), vs. Champion Baptist (11/17/14)

Largest Rebounding Disadvantage

-13 (49-36), at No. 8 Florida (11/21/14)

Highest Plus Turnover Differential

+13 (24-11), vs. Champion Baptist (11/17/14)

Highest Minus Turnover Differential

-11 (15-4), vs. NSU (12/9/14)

Most 3FG Made In a Game

9, two times

Most 3FG Allowed in a Game

10, vs. NSU (12/9/14)



ULM Warhawks Men's Basketball

University of Louisiana at Monroe



0 Marvin Williams

Senior | Center | 6-8 | 245
Memphis, Tenn. | NW Florida State College

	Season-High	Career-High
Pts	14, vs. RMU (11/27/14)	19, at Kansas (11/8/13)
FG	6, vs. RMU (11/27/14)	8, two times
3FG	1, at Florida (11/22/14)	1, two times
FT	5, two times	5, two times
Ast	1, four times	2, three times
Reb	6, at GSU (12/30/14)	13, at ASU (3/6/14)
Blocks	3, vs. RMU (11/27/14)	4, vs. UALR (2/15/14)
Steals	2, vs. CHBC (11/17/14)	2, vs. CHBC (11/17/14)
Min	36, vs. RMU (11/27/14)	36, vs. RMU (11/27/14)

Opp	GS	Min	FG-FGA/Pct.	3FG-FGA	FT-FTA/PCT	O-D-T	PF-FO	A	TO	Blk	Stl	Pts/Avg
UAB	*	16	1-5/.200	0-1/.000	1-1/1.000	0-0-0	3-0	0	0	0	1	3/3.0
CH BAP	*	18	3-3/1.000	0-0/.000	5-8/.625	1-3-4	2-0	1	1	0	2	11/7.0
Florida	*	27	3-11/.273	1-1/1.000	0-0/.000	3-1-4	2-0	0	1	2	0	7/7.0
C. Car	*	6	0-1/.000	0-1/.000	0-0/.000	0-2-2	4-0	0	2	0	0	0/5.3
RMU	*	36	6-11/.545	0-0/.000	2-5/.400	2-3-5	3-0	1	1	3	1	14/7.0
La. Col		10	1-1/1.000	0-0/.000	0-0/.000	0-3-3	1-0	0	1	0	0	2/6.2
NSU		9	1-1/1.000	0-0/.000	0-0/.000	0-2-2	2-0	0	2	1	0	2/5.6
N.M.	*	18	2-4/.500	0-0/.000	2-2/1.000	3-2-5	2-0	0	2	2	0	6/5.6
CE BAP					DNP							
LSU-A		22	4-7/.571	0-0/.000	2-6/.333	2-2-4	1-0	0	0	2	0	10/6.1
Samford		16	2-4/.500	0-0/.000	0-0/.000	2-2-4	4-0	1	1	0	0	4/5.9
Ga. St.		17	1-3/.333	0-0/.000	5-6/.833	2-4-6	2-0	1	3	0	0	7/6.0
Ark. St.												
UTA												
TXST												
Troy												
UALR												
UL-L												
UTA												
Ga. So.												
Troy												
USA												
UALR												
Ga. So.												
UL-L												
App. St.												
Ark. St.												
USA												
App. St.												
Ga. St.												
TXST												
TBA												
Totals	6	195	24-51/.471	1-3/.333	17-28/.607	15-24-39	26-0	4	14	10	4	66/6.0

2014-15 (SENIOR)

Set seasons highs with 14 points, six field goals made and 36 minutes in the Battle 4 Atlantis against Robert Morris... grabbed a season-high six rebounds at Georgia State... tallied 11 points on a perfect 3-for-3 from the field, grabbed four rebounds and set a career-high two steals in a win over Champion Baptist... scored 10 points with four rebounds and a pair of blocks in a victory over LSU A

2013-14 (JUNIOR)

Tallied a pair of double-doubles with 13 points and 10 rebounds at Northwestern State and 11 points and 13 rebounds at Arkansas State... led the team with 23 blocks, finishing top-10 in the SBC... averaged 8.5 points and 4.8 rebounds per game... shot 48.6 percent from the field (89-183) which was top-15 in the league... grabbed 2.1 offensive rebounds per game in conference play, eighth-best in the league... posted nine double-figure scoring games on the season including a career-high 19 points at No. 5 Kansas to outscore Preseason Player of the Year Andrew Wiggins... the 13 rebounds against the Red Wolves were the most by a Warhawk in a single-game on the season... turned in 14 points and nine rebounds against UT Arlington at the SBC Championships... rejected a career-high four blocks at home against UALR

PREVIOUS SCHOOL

Transferred from Northwest Florida Junior College which was ranked as high as No. 2 in the country ... Shot 53.7 percent from the field and averaged 6.1 points and 4.8 rebounds per game ... Played in 32 games, including 24 starts ... Recorded seven double-figure scoring games, including a career-high 17 to go along with 13 rebounds on Jan. 5 ... Eligible to play two seasons at ULM



2 DeMondre Harvey

Junior | Forward | 6-7 | 210
Memphis, Tenn. | NW Florida State College

	Season-High	Career-High
Pts	12, vs. NSU (12/9/14)	12, vs. NSU (12/9/14)
FG	6, vs. NSU (12/9/14)	6, vs. NSU (12/9/14)
3FG	N/A	N/A
FT	5, vs. LSUA (12/19/14)	5, vs. LSUA (12/19/14)
Ast	2, vs. LC (12/6/14)	2, four times
Reb	10, vs. NSU (12/9/14)	10, vs. NSU (12/9/14)
Blocks	3, vs. CHBC (11/17/14)	3, vs. CHBC (11/17/14)
Steals	1, two times	3, vs. ASU (3/1/14)
Min	30, two times	30, two times

Opp	GS	Min	FG-FGA/Pct.	3FG-FGA	FT-FTA/PCT	O-D-T	PF-FO	A	TO	Blk	Stl	Pts/Avg
UAB		22	2-7/.286	0-0/.000	1-2/.500	3-2-5	0-0	0	1	0	0	5/5.0
CH BAP		21	2-3/.667	0-0/.000	2-3/.667	6-3-9	1-0	0	1	3	0	9/7.0
Florida		6	0-0/.000	0-0/.000	0-0/.000	0-0-0	1-0	0	0	0	0	0/4.7
C. Car		15	0-1/.000	0-0/.000	0-0/.000	1-0-1	1-0	0	0	0	0	0/3.5
RMU		1	0-0/.000	0-0/.000	0-0/.000	0-0-0	0-0	0	0	0	0	0/2.2
La. Col	*	30	4-7/.571	0-0/.000	0-0/.000	2-7-9	1-0	2	3	1	1	8/3.2
NSU	*	30	6-6/1.000	0-0/.000	0-0/.000	1-9-10	1-0	1	2	2	0	12/4.4
N.M.		10	0-0/.000	0-0/.000	0-0/.000	1-0-1	3-0	1	1	1	0	0/3.9
CE BAP		25	4-7/.571	0-0/.000	0-0/.000	4-4-8	3-0	0	0	0	0	8/4.3
LSU-A	*	16	1-1/1.000	0-0/.000	5-5/1.000	0-2-2	0-0	0	1	0	1	7/4.6
Samford	*	14	3-4/.750	0-0/.000	0-3/.000	2-1-3	1-0	0	0	0	0	6/4.7
Ga. St.	*	20	1-4/.250	0-0/.000	1-2/.500	2-2-4	1-0	0	0	0	0	3/4.6
Ark. St.												
UTA												
TXST												
Troy												
UALR												
UL-L												
UTA												
Ga. So.												
Troy												
USA												
UALR												
Ga. So.												
UL-L												
App. St.												
Ark. St.												
USA												
App. St.												
Ga. St.												
TXST												
TBA												
Totals	5	210	23-40/.575	0-0/.000	9-15/.600	22-30-52	13-0	4	9	7	2	55/4.6

2014-15 (JUNIOR)

Posted a career performance against Northwestern State with a double-double and personal bests of 12 points and 10 rebounds in the win; matched his career-high with 30 minutes after getting the start... also earned the start and logged 30 minutes against Louisiana College; recorded eight points and nine rebounds in the contest... big outing with nine points, nine rebounds and three blocks in the win over Champion Baptist

2013-14 (SOPHOMORE)

Led the team in field goal percentage with a .531 mark (34-64)... registered a career-high 11 points on four made field goals against Thomas... grabbed a career-high eight rebounds at both Ole Miss and UALR... played a career-high 25 minutes at home against WKU... career-high three steals at home against Troy... recorded 13 blocks and 13 steals on the season... made four starts and played in all 27 contests... averaged 3.1 points and 3.4 rebounds per game... led the team in rebounding in four games and in blocks in six games

PREVIOUS SCHOOL

Played at Pearl River Junior College in Poplarville, Miss. and averaged 6.4 points and 5.8 rebounds per game ... Played in all 25 games and made 15 starts ... Registered three double-doubles including 14 points and 11 rebounds in the final game of the season on March 8 ... Tallied a career-high 15 points and four blocks against Holmes Community College on Nov. 5 ... Shot 60.0 percent from the field on the season and 60.6 percent from the free throw line ... Will have three years of eligibility remaining at ULM.



ULM Warhawks Men's Basketball

University of Louisiana at Monroe



3 Prince Cooper

Sophomore | Guard | 6-4 | 215
Freeport, Bahamas | Miami-Dade College

	Season-High	Career-High
Pts	3, vs. CHBC (11/17/14)	3, vs. CHBC (11/17/14)
FG	1, two times	1, two times
3FG	N/A	N/A
FT	1, vs. CHBC (11/17/14)	1, vs. CHBC (11/17/14)
Ast	3, vs. CHBC (11/17/14)	3, vs. CHBC (11/17/14)
Reb	5, vs. CHBC (11/17/14)	5, vs. CHBC (11/17/14)
Blocks	1, vs. CHBC (11/17/14)	1, vs. CHBC (11/17/14)
Steals	1, two times	1, two times
Min	24, vs. CHBC (11/17/14)	24, vs. CHBC (11/17/14)

Opp	GS	Min	FG-FGA/Pct.	3FG-FGA	FT-FTA/PCT	O-D-T	PF-FO	A	TO	Blk	Stl	Pts/Avg
UAB	5	0-1/.000	0-0/.000	0-0/.000	1-0-1	0-0	0	0	0	0	0	0/0.0
CH BAP	24	1-6/.167	0-0/.000	1-2/.500	2-3-5	1-0	3	2	1	1	3	1/1.5
Florida	6	1-2/.500	0-0/.000	0-0/.000	1-3-4	0-0	0	0	0	0	0	2/1.7
C. Car	12	1-1/1.000	0-0/.000	0-0/.000	0-2-2	0-0	1	1	0	0	0	2/1.8
RMU	8	0-0/.000	0-0/.000	0-0/.000	1-0-1	0-0	0	0	0	0	0	0/1.4
La. Col				DNP								
NSU				DNP								
N.M.	1	0-0/.000	0-0/.000	0-0/.000	0-0-0	0-0	0	0	0	0	0	0/1.2
CE BAP	7	0-1/.000	0-0/.000	0-2/.000	0-0-0	0-0	1	1	0	0	0	0/1.0
LSU-A				DNP								
Samford				DNP								
Ga. St.	18	1-2/.500	0-0/.000	0-2/.000	0-1-1	0-0	2	2	0	1	2	1/1.1
Ark. St.												
UTA												
TXST												
Troy												
UALR												
UL-L												
UTA												
Ga. So.												
Troy												
USA												
UALR												
Ga. So.												
UL-L												
App. St.												
Ark. St.												
USA												
App. St.												
Ga. St.												
TXST												
TBA												
Totals	81	4-13/.308	0-0/.000	1-6/.167	5-9-14	1-0	7	6	1	2	9	1/1.1

2014-15 (SOPHOMORE)

Set nearly every career high in a win against Champion Baptist including five rebounds and three assists in 24 minutes... hit a mid-range jumper at Georgia State

PREVIOUS SCHOOL

Played one season at Miami-Dade JC (Fla.)... averaged 10.4 points, 6.4 rebounds and 2.1 assists per game... shot an astounding 83 percent from the field... earned Dean's List honors for his achievements in the classroom

HIGH SCHOOL

Lettered in both basketball and track & field at Piney Woods HS (Miss.)... averaged 12 points, eight rebounds and three assists per game... named team captain as a senior... state champion in the triple jump (track & field)... earned academic honor roll and the highest chemistry and algebra II award... graduated top-15 in his class



4 Mack Foster

Junior | Guard | 6-2 | 185
Beulah, Miss. | East Mississippi CC

	Season-High	Career-High
Pts	13, vs. CHBC (11/17/14)	13, vs. CHBC (11/17/14)
FG	5, vs. CHBC (11/17/14)	5, vs. CHBC (11/17/14)
3FG	3, vs. CHBC (11/17/14)	3, vs. CHBC (11/17/14)
FT	2, two times	2, two times
Ast	3, two times	3, two times
Reb	3, two times	3, two times
Blocks	1, three times	1, three times
Steals	4, vs. LC (12/6/14)	4, vs. LC (12/6/14)
Min	24, vs. CHBC (11/17/14)	24, vs. CHBC (11/17/14)

Opp	GS	Min	FG-FGA/Pct.	3FG-FGA	FT-FTA/PCT	O-D-T	PF-FO	A	TO	Blk	Stl	Pts/Avg
UAB	7	0-2/.000	0-2/.000	0-0/.000	0-0-0	1-0	0	0	1	0	0	0/0.0
CH BAP	24	5-9/.556	3-6/.500	0-0/.000	1-1-2	2-0	3	1	1	3		13/7.5
Florida	18	1-4/.250	1-2/.500	0-0/.000	0-0-0	4-0	2	0	0	3		3/5.3
C. Car	11	3-4/.750	0-1/.000	0-2/.000	2-0-2	0-0	1	0	0	0		6/5.5
RMU	14	3-4/.750	0-1/.000	0-2/.000	1-0-1	1-0	3	0	0	0		6/5.6
La. Col	18	3-5/.600	0-0/.000	2-2/1.000	0-1-1	2-0	2	0	0	4		8/6.0
NSU	14	1-6/.167	0-1/.000	0-0/.000	0-0-0	1-0	1	1	0	0		2/5.4
N.M.	18	2-4/.500	1-2/.500	0-0/.000	2-1-3	0-0	1	1	0	0		5/5.4
CE BAP	11	0-3/.000	0-1/.000	0-0/.000	0-3-3	2-0	0	1	0	0		0/4.8
LSU-A	12	2-3/.667	1-1/1.000	0-0/.000	0-0-0	2-0	1	1	0	0		5/4.8
Samford	13	0-2/.000	0-1/.000	0-0/.000	0-1-1	2-0	1	0	1	0		0/4.5
Ga. St.	14	2-5/.400	1-3/.333	2-2/1.000	0-1-1	0-0	1	0	0	0		7/4.6
Ark. St.												
UTA												
TXST												
Troy												
UALR												
UL-L												
UTA												
Ga. So.												
Troy												
USA												
UALR												
Ga. So.												
UL-L												
App. St.												
Ark. St.												
USA												
App. St.												
Ga. St.												
TXST												
TBA												
Totals	174	22-51/.431	7-21/.333	4-8/.500	6-8-14	17-0	16	5	3	10		55/4.6

2014-15 (JUNIOR)

Became the first Warhawk to register four steals in a game on the season in the win over Louisiana College... shot 3-for-4 from the field in both games of the Battle 4 Atlantis Mainland bracket against Coastal Carolina and Robert Morris... registered a career-high 13 points and hit a trio of three-pointers in 24 minutes in a win over Champion Baptist

PREVIOUS SCHOOL

Played two seasons at East Mississippi CC and led the team to the Region 23 championship... guided the team to a No. 11 ranking in the NJCAA National Poll... averaged 7.1 points, 4.0 rebounds and 1.0 steals per game... hit a career-high six three-pointers in a game

HIGH SCHOOL

Lettered in both basketball and track & field at West Bolivar HS... named Co-MVP All-State and Best Offensive Player... earned All-Area MVP, First-Team and Best Defensive Player... guided the Eagles to the state championship... averaged 15 points, six rebounds, three steals and two blocks per game... dunked on Johnny O'Bryant III, who was drafted by the Milwaukee Bucks, his freshman year off a put-back



ULM Warhawks Men's Basketball

University of Louisiana at Monroe



5 Jamaal Samuel

Junior | Forward | 6-9 | 205
New Orleans, La. | Illinois State

	Season-High	Career-High
Pts	18, vs. CHBC (11/17/14)	18, vs. CHBC (11/17/14)
FG	7, vs. CHBC (11/17/14)	7, vs. CHBC (11/17/14)
3FG	3, vs. CHBC (11/17/14)	3, vs. CHBC (11/17/14)
FT	4, vs. NSU (12/9/14)	4, vs. NSU (12/9/14)
Ast	2, two times	2, three times
Reb	7, vs. NSU (12/9/14)	8, vs. Bradley (2/15/14)
Blocks	4, vs. C. Carolina (11/26/14)	4, two times
Steals	2, two times	2, two times
Min	27, at UNM (12/13/14)	27, at UNM (12/13/14)

Opp	GS	Min	FG-FGA/Pct.	3FG-FGA	FT-FTA/PCT	O-D-T	PF-FO	A	T	Blk	Stl	Pts/Avg
UAB		17	1-4/.250	1-3/.333	0-0/.000	0-2-2	3-0	2	2	0	1	3/3.0
CH BAP		20	7-12/.583	3-6/.500	1-2/.500	1-5-6	1-0	0	2	2	0	18/10.5
Florida		22	3-10/.300	3-10/.300	0-0/.000	1-5-6	3-0	0	1	0	1	9/10.0
C. Car		23	1-4/.250	1-4/.250	0-0/.000	0-2-2	2-0	1	1	4	1	3/8.3
RMU		14	1-5/.200	1-4/.250	1-2/.500	0-5-5	2-0	1	4	0	1	4/7.4
La. Col		11	1-6/.167	0-1/.000	0-0/.000	2-0-2	2-0	0	0	1	0	2/6.5
NSU		14	4-8/.500	0-0/.000	4-5/.800	3-4-7	3-0	0	0	3	0	12/7.3
N.M.		27	2-7/.286	0-4/.000	2-2/1.000	0-2-2	0-0	0	0	0	2	6/7.1
CE BAP	*	21	1-5/.200	0-1/.000	1-2/.500	0-2-2	2-0	0	2	2	2	3/6.7
LSU-A		21	4-6/.667	0-2/.000	0-0/.000	2-3-5	1-0	1	2	1	0	8/6.8
Samford		25	5-8/.625	2-2/1.000	1-2/.500	0-6-6	4-0	0	1	1	0	13/7.4
Ga. St.	*	26	4-12/.333	1-4/.250	0-1/.000	0-5-5	0-0	2	1	0	0	9/7.5
Ark. St.												
UTA												
TXST												
Troy												
UALR												
UL-L												
UTA												
Ga. So.												
Troy												
USA												
UALR												
Ga. So.												
UL-L												
App. St.												
Ark. St.												
USA												
App. St.												
Ga. St.												
TXST												
TBA												
Totals		241	34-87/.391	12-41/.293	10-16/.625	9-41-50	23-0	7	16	14	8	90/7.5

2014-15 (JUNIOR)

Netted 13 points including a pair of three-pointers and pulled down six rebounds against Samford... registered 12 points and grabbed a season-high seven rebounds in the win over NSU... set career highs in points (18), field goals made (7) and three-pointers made (3) in a win over Champion Baptist... earned the start against Central Baptist and had a pair of blocks and steals... led the team with nine points at Georgia State

2013-14 (SOPHOMORE) ILLINOIS STATE

Played in 26 games with one start... ranked second on the team and No. 5 in the Missouri Valley Conference with 0.9 blocks per game... netted four points with four rebounds and three blocks in the loss at Southern Illinois (March 1)... grabbed a career-best eight rebounds and scored four points in the win over Bradley (Feb. 15)... blocked a career-best four shots and collected six rebounds in the overtime loss at Evansville (Feb. 12)... netted nine points on 3-for-4 shooting in the loss at Loyola (Feb. 9)... scored a career-high 10 points on a career-best five field goals (5-for-5) in the win over Northern Iowa (Feb. 5)... made his first-career start and scored four points during a career-high 24 minutes in the win over Drake (Feb. 1)... registered the first two blocks of his career in the win over Chicago State (Dec. 4)... scored nine points on 4-for-6 shooting with five rebounds in the loss at No. 14 VCU (Nov. 8)

2012-13 (FRESHMAN) PRIOR TO ILLINOIS STATE

Helped guide South Plains College to a 22-8 overall record and an 11-5 mark in the Western Junior College Athletic Conference (WJCAC) as a freshman in 2012-13... shot 46.7 percent from the field



11 Nick Coppola

Sophomore | Guard | 5-11 | 195
Richmond, Va. | Benedictine Prep

	Season-High	Career-High
Pts	15, at Samford (12/21/14)	16, at GSU (2/20/14)
FG	6, two times	6, three times
3FG	3, three times	4, at GSU (2/20/14)
FT	4, at UNM (12/13/14)	5, at KU (11/8/13)
Ast	12, vs. LC (12/6/14)	12, vs. LC (12/6/14)
Reb	5, vs. NSU (12/9/14)	6, vs. WKU (1/23/14)
Blocks	N/A	N/A
Steals	3, vs. LC (12/6/14)	3, vs. LC (12/6/14)
Min	45, at Florida (11/21/14)	45, at Florida (11/21/14)

Opp	GS	Min	FG-FGA/Pct.	3FG-FGA	FT-FTA/PCT	O-D-T	PF-FO	A	TO	Blk	Stl	Pts/Avg
UAB	*	33	5-8/.625	3-5/.600	1-2/.500	0-4-4	0-0	6	2	0	1	14/14.0
CH BAP	*	12	2-2/1.000	1-1/1.000	2-4/.500	0-2-2	1-0	4	0	0	1	7/10.5
Florida	*	45	3-10/.300	3-5/.600	2-2/1.000	0-1-1	3-0	2	1	0	1	11/10.7
C. Car	*	37	2-9/.222	1-5/.200	0-0/.000	0-1-1	2-0	7	0	0	0	5/9.3
RMU	*	39	2-8/.250	2-6/.333	0-0/.000	1-2-3	2-0	2	2	0	1	6/8.6
La. Col	*	31	6-9/.667	0-2/.000	0-2/.000	0-0-0	1-0	12	4	0	3	12/9.2
NSU	*	40	4-9/.444	2-5/.400	3-4/.750	1-4-5	3-0	6	2	0	2	13/9.7
N.M.	*	29	2-8/.250	1-4/.250	4-4/1.000	0-2-2	5-1	0	1	0	0	9/9.6
CE BAP	*	28	4-5/.800	2-3/.667	2-2/1.000	0-1-1	3-0	2	2	0	2	12/9.9
LSU-A	*	40	5-11/.455	1-4/.250	2-3/.667	0-3-3	1-0	6	1	0	0	13/10.2
Samford	*	37	6-12/.500	3-4/.750	0-0/.000	1-1-2	2-0	2	3	0	0	15/10.6
Ga. St.	*	29	2-4/.500	2-3/.667	0-0/.000	0-4-4	1-0	4	1	0	2	6/10.3
Ark. St.												
UTA												
TXST												
Troy												
UALR												
UL-L												
UTA												
Ga. So.												
Troy												
USA												
UALR												
Ga. So.												
UL-L												
App. St.												
Ark. St.												
USA												
App. St.												
Ga. St.												
TXST												
TBA												
Totals	12	400	43-95/.453	21-47/.447	16-23/.696	3-25-28	24-1	53	19	0	13	123/10.3

2013-14 College Sports Madness SBC Freshman of the Year

2014-15 (SOPHOMORE)

Has started at point guard in every game of his career... shooting 43.2 percent from three-point range (19-44)... season-high 15 points at Samford... recorded 13 points vs. LSU-A... tallied career-highs of 12 assists and three steals against Louisiana College and also had a double-double with 12 points... posted 12 points on four-for-five shooting against Central Baptist... registered 13 points in 40 minutes against NSU... dished out seven assists against Coastal Carolina at the Battle 4 Atlantis... netted 11 points on a trio of three-pointers, including one in the final seconds of regulation to send the game to overtime against No. 8 Florida, and played a career-high 45 minutes... registered 14 points, including a trio of three-pointers in the second half, to go along with his six assists in a win at UAB... led the team with nine points at New Mexico

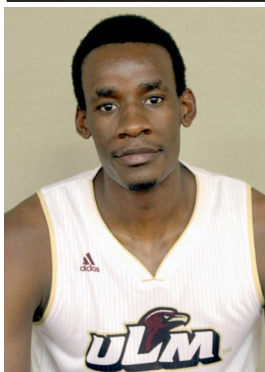
2013-14 (FRESHMAN)

One of two players to start all 27 games for the Warhawks... led the team in minutes with 33.3 per game... played 40 minutes nine times and tied the school record of five in a row set in 1999-2000 by Maurice Bell... in conference play, ranked third in the league in minutes (36.1 mpg), seventh in three-point field goal percentage (.407) and top-10 in assists (2.9 apg)... tallied nine double-figure scoring games including a career-high 16 points at Georgia State where he hit four three-pointers... drained a career-high six field goals at UALR in the regular season finale and scored 15 points... dished out a career-high eight assists in an overtime victory at Northwestern State... pulled down a career-high six rebounds at home versus WKU... scored 10 points in the season opener at No. 5 Kansas... led the team in minutes in 12 games and assists in 10 games... averaged 6.9 points and 3.3 assists per game on the year



ULM Warhawks Men's Basketball

University of Louisiana at Monroe



12 Tylor Ongwae

Senior | Forward | 6-7 | 205
Eldoret, Kenya | Ranger College

	Season-High	Career-High
Pts	25, vs. two times	27, two times
FG	10, vs. CEBC (12/16/14)	11, vs. ULL (1/4/14)
3FG	1, three times	4, at UTA (1/9/14)
FT	7, vs. NSU (12/9/14)	9, two times
Ast	9, vs. NSU (12/9/14)	9, vs. NSU (12/9/14)
Reb	10, vs. NSU (12/9/14)	11, two times
Blocks	2, at Florida (11/21/14)	3, vs. ULL (1/4/14)
Steals	2, vs. CHBC (11/17/14)	5, vs. UALR (2/15/14)
Min	39, two times	46, vs. ULL (1/4/14)



13 Major Deng

Junior | Forward | 6-10 | 190
Adelaide, Australia | Indian Hills CC

	Season-High	Career-High
Pts	14, three times	14, three times
FG	5, four times	5, four times
3FG	2, two times	2, two times
FT	5, vs. CEBC (12/16/14)	5, vs. CEBC (12/16/14)
Ast	2, four times	2, four times
Reb	11, two times	11, two times
Blocks	4, at UAB (11/15/14)	4, at UAB (11/15/14)
Steals	2, two times	2, two times
Min	35, two times	35, two times

Opp	GS	Min	FG-FGA/Pct.	3FG-FGA	FT-FTA/PCT	O-D-T	PF-FO	A	TO	Blk	Stl	Pts/Avg
UAB	*	34	8-17/.471	0-0/.000	2-2/1.000	3-6-9	5-1	2	3	0	1	18/18.0
CH BAP	*	12	8-10/.800	0-0/.000	0-0/.000	4-1-5	0-0	0	0	1	2	16/17.0
Florida	*	39	8-14/.585	0-1/.000	3-6/.625	3-5-8	4-0	3	3	2	0	19/17.7
C. Car	*	28	3-10/.300	0-3/.000	1-1/1.000	0-4-4	1-0	2	3	0	0	7/15.0
RMU	*	32	2-6/.333	0-0/.000	3-3/1.000	3-1-4	3-0	1	2	1	1	7/13.4
La. Col	*	30	9-15/.600	0-0/.000	4-5/.800	6-3-9	2-0	1	3	0	1	22/14.8
NSU	*	39	6-8/.750	0-0/.000	7-8/.875	2-8-10	3-0	9	4	0	0	19/15.4
N.M.	*	30	2-11/.182	1-3/.333	3-4/.750	2-5-7	3-0	1	2	0	0	8/14.5
CE BAP	*	38	10-16/.625	1-3/.333	4-4/1.000	2-3-5	2-0	6	1	0	1	25/15.7
LSU-A	*	38	9-15/.600	1-2/.500	6-6/1.000	2-4-6	3-0	4	2	0	1	25/16.6
Samford	*	39	2-14/.143	0-1/.000	5-6/.833	3-3-6	2-0	4	2	0	0	9/15.9
Ga. St.	*	22	0-7/.000	0-2/.000	0-0/.000	0-0-0	3-0	2	1	0	1	0/14.6
Ark. St.												
UTA												
TXST												
Troy												
UALR												
UL-L												
UTA												
Ga. So.												
Troy												
USA												
UALR												
Ga. So.												
UL-L												
App. St.												
Ark. St.												
USA												
App. St.												
Ga. St.												
TXST												
TBA												
Totals	12	381	67-143/.469	3-15/.200	38-45/.844	30-43-73	31-1	35	26	4	8	175/14.6

2013-14 All-Conference Third-Team | 2013-14 NABC All-District Second-Team
2013-14 All-Louisiana Third-Team | 2013-14 College Sports Madness SBC Fourth-Team

2014-15 (SENIOR)

Season-high 25 points vs. Central Baptist and also had six assists and five rebounds... matched his season-high with 25 points against LSU... tallied a double-double with 19 points and 10 rebounds vs. NSU and neared a triple-double with a career-high nine assists... neared a double-double with 22 points and nine rebounds vs. Louisiana College... poured in 19 points and grabbed eight rebounds in an overtime thriller against No. 8 Florida and head coach Billy Donovan said he was the best player on the court... won SBC Player of the Week, College Sports Madness SBC Player of the Week and Warhawk of the Week on Nov. 18, 2014... drained 16 points in just 12 minutes on 8-for-10 shooting against Champion Baptist and grabbed five rebounds... netted 18 points in a victory over UAB and neared a double-double with nine rebounds

2013-14 (JUNIOR)

Became just the second ULM student-athlete in school history to earn All-Conference honors from the Sun Belt since joining the league in 2006-0... finished fourth in the league in scoring with 17.5 points per game and reached double-figures in 17 of 18 SBC contests... recorded double-digits in 24 of 27 games on the season and played at least 40 minutes three times... registered at least 20 points nine times... posted three double-doubles, with a career-high 27 points against both UL-L and Georgia State at home... led the team in scoring in 17 games... notched a career-high five steals at home vs. UALR, the most by a Warhawk in a single game on the season... played a career-high 46 minutes in the overtime win over UL-L and made a career-high 11 FG's... etched a team-high 20 points against UTA at the SBC Championships... one of two players to start all 27 games on the season... second on the team in rebounds (5.8 rpg), three-pointers made (27), blocks (19) and steals (30)... named to the NABC Honors Court for outstanding achievement in the classroom

Opp	GS	Min	FG-FGA/Pct.	3FG-FGA	FT-FTA/PCT	O-D-T	PF-FO	A	TO	Blk	Stl	Pts/Avg
UAB	*	25	5-9/.556	2-4/.500	1-2/.500	1-4-5	1-0	2	0	4	2	13/13.0
CH BAP	*	20	2-4/.500	0-2/.000	3-3/1.000	0-6-6	2-0	2	2	2	1	7/10.0
Florida	*	35	1-7/.143	1-5/.200	0-0/.000	1-8-9	2-0	1	1	0	0	3/7.67
C. Car	*	35	5-10/.500	2-6/.333	2-2/1.000	1-9-10	2-0	0	0	3	0	14/9.3
RMU	*	19	0-4/.000	0-2/.000	2-2/1.000	1-0-1	3-0	0	2	0	0	2/7.8
La. Col	*	29	5-9/.556	1-2/.500	3-6/.500	2-9-11	2-0	2	2	2	1	14/8.8
NSU	*	26	5-10/.500	1-1/1.000	3-4/.750	3-4-7	1-0	1	1	2	0	14/9.6
N.M.	*	26	3-8/.375	0-4/.000	0-0/.000	2-4-6	4-0	1	0	1	2	6/9.1
CE BAP	*	34	3-7/.429	0-0/.000	5-6/.833	4-7-11	2-0	2	3	3	1	11/9.3
LSU-A	*	21	1-2/.500	0-0/.000	0-0/.000	1-6-7	0-0	0	1	3	0	2/8.6
Samford	*	16	0-4/.000	0-1/.000	0-0/.000	0-3-3	1-0	0	0	1	0	0/7.8
Ga. St.	*	17	3-9/.333	0-2/.000	0-1/.000	4-4-8	1-0	1	1	1	0	6/7.7
Ark. St.												
UTA												
TXST												
Troy												
UALR												
UL-L												
UTA												
Ga. So.												
Troy												
USA												
UALR												
Ga. So.												
UL-L												
App. St.												
Ark. St.												
USA												
App. St.												
Ga. St.												
TXST												
TBA												
Totals	12	303	33-83/.398	7-29/.241	19-26/.731	20-64-84	21-0	12	13	22	7	92/7.7

JUNIOR (2014-15)

Posted a double-double with 11 points and 11 rebounds in the win over Central Baptist... recorded 14 points, seven rebounds and two blocks and hit a big three-pointer in the end to defeat Northwestern State... tallied a double-double with 14 points and a career-high 11 rebounds in the win over Louisiana College... registered a double-double with 14 points and 10 rebounds against Coastal Carolina in the Battle 4 Atlantis... poured in 13 points, including a pair of three-pointers, in a win over UAB and also blocked four shots

PREVIOUS SCHOOL

Led Indian Hills Community College to the 2014 Regional and District Championships... guided the program to a 34-3 record in 2014 and a combined 60-7 record in his two years... hit a three-pointer against Southeastern for the win in double overtime in 2013... netted a career-high 16 points against John Wood CC



ULM Warhawks Men's Basketball

University of Louisiana at Monroe



20 Chinedu Amajoyi

Senior Guard | 6-3 | 195
Rancho Cucamonga, Calif. | Kilgore College

	Season-High	Career-High
Pts	8, vs. CHBC (11/17/14)	12, vs. USA (2/27/14)
FG	4, vs. CHBC (11/17/14)	4, vs. USA (2/27/14)
3FG	N/A	3, two times
FT	2, at GSU (12/30/14)	10, vs. ASU (1/30/14)
Ast	6, vs. CHBC (11/17/14)	6, vs. CHBC (11/17/14)
Reb	4, at UAB (11/15/14)	8, two times
Blocks	N/A	1, two times
Steals	1, at GSU (12/30/14)	2, two times
Min	19, two times	36, at ASU (3/6/14)

Opp	GS	Min	FG-FGA/Pct.	3FG-FGA	FT-FTA/PCT	O-D-T	PF-FO	A	TO	Blk	Stl	Pts/Avg
UAB	8	0-3/.000	0-1/.000	0-0/.000	1-3-4	1-0	1	2	0	0	0	0/0.0
CH BAP	19	4-7/.571	0-2/.000	0-0/.000	0-2-2	3-0	6	0	0	0	0	8/4.0
Florida					DNP							
C. Car	3	0-0/.000	0-0/.000	0-0/.000	0-0-0	0-0	0	1	0	0	0	0/2.7
RMU	1	0-0/.000	0-0/.000	0-0/.000	0-0-0	0-0	0	0	0	0	0	0/2.0
La. Col	10	0-1/.000	0-1/.000	0-0/.000	0-0-0	1-0	1	2	0	0	0	0/1.6
NSU					DNP							
N.M.	8	0-1/.000	0-0/.000	0-0/.000	0-1-1	0-0	1	1	0	0	0	0/1.3
CE BAP	2	0-2/.000	0-1/.000	0-0/.000	0-0-0	1-0	0	0	0	0	0	0/1.1
LSU-A					DNP							
Samford	13	0-1/.000	0-0/.000	0-0/.000	0-1-1	1-0	0	0	0	0	0	0/1.0
Ga. St.	* 19	0-0/.000	0-0/.000	2-2/1.000	0-0-0	0-0	1	1	0	1	1	2/1.1
Ark. St.												
UTA												
TXST												
Troy												
UALR												
UL-L												
UTA												
Ga. So.												
Troy												
USA												
UALR												
Ga. So.												
UL-L												
App. St.												
Ark. St.												
USA												
App. St.												
Ga. St.												
TXST												
TBA												
Totals	1	83	4-15/.267	0-5/.000	2-2/1.000	1-7-8	7-0	10	8	0	1	10/1.1

2014-15 (SENIOR)

Scored eight points in 19 minutes in a win over Champion Baptist

2013-14 (JUNIOR)

Finished top-10 in the league in three-point field goal percentage at .405 (15-37)... started in 11 of ULM's last 12 games and doubled his scoring average in that span... posted career-highs of 12 points and eight rebounds against South Alabama at home... became the only ULM student-athlete to hit 10 free throws in a game on the season as he went 10-12 at home against Arkansas State... registered three double-figure scoring games... played a career-high 36 minutes at Arkansas State and pulled down eight rebounds... drained a trio of three-pointers at both Texas State and Georgia State... averaged 4.1 points per game and made 22 appearances

PREVIOUS SCHOOL

Played two seasons at Kilgore College and led the Rangers to a 27-6 overall record and an East Texas JUCO Conference Championship ... Also guided Kilgore to the quarterfinals of the 2013 National Junior College Athletic Association National Tournament and started every game ... Averaged 5.9 points, 2.7 rebounds and 1.9 assists in 33 appearances ... Tallied five double-figure scoring games including a career-high 17 points on two separate occasions ... Shot .807 percent from the free-throw line

HIGH SCHOOL

An All-Conference honoree at Los Osos High School ... Averaged 15 points and seven rebounds per game while shooting .857 from the free throw line ... 1,000 point scorer in his career



22 Lance Richard

R-Freshman | Guard | 5-10 | 175
Monroe, La. | Sterlington HS

	Season-High	Career-High
Pts	8, vs. CHBC (11/17/14)	8, vs. CHBC (11/17/14)
FG	3, vs. CHBC (11/17/14)	3, vs. CHBC (11/17/14)
3FG	2, vs. CHBC (11/17/14)	2, vs. CHBC (11/17/14)
FT	N/A	N/A
Ast	N/A	N/A
Reb	3, vs. CHBC (11/17/14)	3, vs. CHBC (11/17/14)
Blocks	1, vs. RMU (11/17/14)	1, vs. RMU (11/17/14)
Steals	1, two times	1, two times
Min	15, vs. CHBC (11/17/14)	15, vs. CHBC (11/17/14)

Opp	GS	Min	FG-FGA/Pct.	3FG-FGA	FT-FTA/PCT	O-D-T	PF-FO	A	TO	Blk	Stl	Pts/Avg
UAB	1	0-0/.000	0-0/.000	0-0/.000	0-0-0	0-0	0	0	0	0	0	0/0.0
CH BAP	15	3-8/.375	2-7/.286	0-0/.000	0-3-3	1-0	0	1	0	1	0	8/4.0
Florida	1	0-0/.000	0-0/.000	0-0/.000	0-0-0	0-0	0	0	0	0	0	0/2.7
C. Car	1	0-2/.000	0-2/.000	0-0/.000	0-0-0	0-0	0	0	0	0	0	0/2.0
RMU	5	1-2/.500	1-2/.500	0-0/.000	0-0-0	2-0	0	0	1	0	0	3/2.2
La. Col	5	1-3/.333	1-3/.333	0-0/.000	0-0-0	0-0	0	0	0	0	0	3/2.3
NSU					DNP							
N.M.	1	0-1/.000	0-1/.000	0-0/.000	0-0-0	0-0	0	0	0	0	0	0/2.0
CE BAP	3	0-1/.000	0-1/.000	0-0/.000	0-0-0	0-0	0	0	0	0	1	0/1.8
LSU-A	0+	0-1/.000	0-1/.000	0-0/.000	0-0-0	0-0	0	0	0	0	0	0/1.6
Samford	2	0-0/.000	0-0/.000	0-0/.000	0-0-0	0-0	0	0	0	0	0	0/1.4
Ga. St.	5	1-2/.500	1-2/.500	0-0/.000	0-0-0	0-0	0	1	0	0	0	3/1.5
Ark. St.												
UTA												
TXST												
Troy												
UALR												
UL-L												
UTA												
Ga. So.												
Troy												
USA												
UALR												
Ga. So.												
UL-L												
App. St.												
Ark. St.												
USA												
App. St.												
Ga. St.												
TXST												
TBA												
Totals	39	6-20/.300	5-19/.263	0-0/.000	0-3-3	3-0	0	2	1	2	17/1.5	

2014-15 (SOPHOMORE)

Netted a career-high eight points and hit a pair of three-pointers in a win over Champion Baptist... drilled a three-pointer and also rejected a shot against Robert Morris at the Battle 4 Atlantis

2013-14 (FRESHMAN)

Redshirted... will still have four years of eligibility remaining

HIGH SCHOOL

Played three seasons at Sterlington High School ... Guided the Panthers to a 25-8 record as a senior and a second round appearance in the Louisiana High School Athletic Association playoffs ... Averaged 12 points and 3 assists per game his senior year ... Earned All-District honors from 2010-2013



ULM Warhawks Men's Basketball

University of Louisiana at Monroe



32 Justin Roberson

Junior | Guard | 6-1 | 185
Natchitoches, La. | Western Texas

	Season-High	Career-High
Pts	19, vs. CEBC (12/16/14)	19, vs. CEBC (12/16/14)
FG	8, vs. CEBC (12/16/14)	8, vs. CEBC (12/16/14)
3FG	1, three times	1, three times
FT	6, at UAB (11/15/14)	6, at UAB (11/15/14)
Ast	6, vs. RMU (11/27/14)	6, vs. RMU (11/27/14)
Reb	7, two times	7, two times
Blocks	2, vs. RMU (11/27/14)	2, vs. RMU (11/27/14)
Steals	3, vs. CHBC (11/17/14)	3, vs. CHBC (11/17/14)
Min	32, two times	32, two times

Opp	GS	Min	FG-FGA/Pct.	3FG-FGA	FT-FTA/PCT	O-D-T	PF-FO	A	TO	Blk	Stl	Pts/Avg
UAB	*	32	6-11/.545	0-0/.000	6-6/1.000	1-3-4	1-0	5	1	0	2	18/18.0
CH BAP	*	15	4-5/.800	0-0/.000	1-2/.500	0-1-1	1-0	2	1	0	3	9/13.5
Florida	*	26	1-6/.167	0-1/.000	0-0/..000	0-1-1	5-1	0	3	0	2	2/9.7
C. Car	*	29	4-7/.571	1-3/.333	2-2/1.000	0-7-7	2-0	2	2	0	0	11/10.0
RMU	*	31	6-10/.600	0-2/.000	0-0/.000	0-4-4	3-0	6	3	2	0	12/10.4
La. Col	*	26	5-7/.714	0-1/.000	2-2/1.000	0-3-3	4-0	1	5	0	2	12/10.7
NSU	*	28	4-6/.667	0-1/.000	0-2/.000	0-3-3	4-0	2	3	0	1	8/10.3
N.M.	*	32	3-11/.273	0-1/.000	0-1/.000	0-4-4	0-0	1	2	0	2	6/9.8
CE BAP	*	31	8-12/.667	1-2/.500	2-2/1.000	0-4-4	2-0	4	0	0	2	19/10.8
LSU-A	*	30	2-6/.333	0-0/.000	2-3/.667	0-7-7	5-1	4	2	0	0	6/10.3
Samford	*	25	1-10/.100	1-1/1.000	0-0/.000	3-3-6	0-0	2	3	0	1	3/9.6
Ga. St.		13	0-5/.000	0-1/.000	0-1/.000	0-0-0	2-0	0	0	0	0	0/8.8
Ark. St.												
UTA												
TXST												
Troy												
UALR												
UL-L												
UTA												
Ga. So.												
Troy												
USA												
UALR												
Ga. So.												
UL-L												
App. St.												
Ark. St.												
USA												
App. St.												
Ga. St.												
TXST												
TBA												
Totals	11	318	44-96/.458	3-13/.231	15-21/.714	4-40-44	29-2	29	25	2	15	106/8.8

JUNIOR (2014-15)

Career-high 19 points and eight made field goals in the win over Central Baptist... Reached double-figures with 12 points on 5-7 shooting against Louisiana College... registered a team and game-high of 18 points, including a perfect 6-6 FT, to go along with his five assists in a win over UAB... recorded a career-high three steals against Champion Baptist... netted 11 points and grabbed a career-high seven rebounds against Coastal Carolina... drained 12 points with a career-high six assists and two blocks against Robert Morris

PREVIOUS SCHOOL

Led Western Texas Junior College to a 23-8 record and averaged 14.2 points, 3.5 rebounds, 4.0 assists and 2.0 steals per game... named to the All-Western Texas Conference First-Team... memorable dunk over a 6-8 post player after driving down the lane

HIGH SCHOOL

Lettered in both basketball and football at Natchitoches Central HS and earned All-State in both sports

Individual Career Totals for Returning Student-Athletes

Only includes statistics at ULM

Points

T. Ongwae	613
N. Coppola	309
M. Williams	279
D. Harvey	142
C. Amajoyi	101

Steals

T. Ongwae	38
N. Coppola	25
M. Williams	17
D. Harvey	15
C. Amajoyi	10

Field Goals M-A

T. Ongwae	219-504
M. Williams	113-234
N. Coppola	108-269
D. Harvey	57-104
C. Amajoyi	29-84

Free Throws M-A

T. Ongwae	156-185
N. Coppola	46-67
M. Williams	51-85
C. Amajoyi	28-38
D. Harvey	25-45

Rebounds

T. Ongwae	228
M. Williams	159
D. Harvey	145
N. Coppola	99
C. Amajoyi	75

Three-Pointers M-A

N. Coppola	47-121
T. Ongwae	30-115
C. Amajoyi	15-45
M. Williams	2-8

Assists

N. Coppola	140
T. Ongwae	74
C. Amajoyi	22
D. Harvey	18
M. Williams	15

Games/Starts

T. Ongwae	39/39
N. Coppola	39/39
D. Harvey	39/9
M. Williams	36/27
C. Amajoyi	31/15

Blocks

M. Williams	33
T. Ongwae	23
D. Harvey	20
C. Amajoyi	2

Minutes

N. Coppola	1299
T. Ongwae	1244
M. Williams	800
D. Harvey	595
C. Amajoyi	464

ULM's 2014-15 Record When it Has...

Five Double-Figure Scorers (1-0)

vs. Northwestern State

Two Double-Figure Scorers (0-4)

at No. 8 Florida
vs. Coastal Carolina
vs. Robert Morris
at Samford

Four Double-Figure Scorers (4-0)

at UAB
vs. Champion Baptist
vs. Louisiana College
vs. Central Baptist

No Double-Figure Scorers (0-2)

at New Mexico
at Georgia State

Three Double-Figure Scorers (1-0)

vs. LSU-Alexandria



ULM Warhawks Men's Basketball

University of Louisiana at Monroe

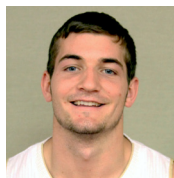


Media Roster



0 Marvin Williams

Senior | Center
6-8 | 245
Memphis, Tenn.
NW Florida State College



11 Nick Coppola

Sophomore | Guard
5-11 | 190
Richmond, Va.
Benedictine Prep



1 Alex Brown

Freshman | Guard
6-4 | 285
Vernon, Fla.
Vernon HS



12 Tylor Ongwae

Senior | Forward
6-7 | 205
Eldoret, Kenya
Ranger College



2 DeMondre Harvey

Sophomore | Forward
6-7 | 210
Minden, La.
Pearl River CC



13 Majok Deng

Junior | Forward
6-10 | 190
Adelaide, Australia
Indian Hills CC



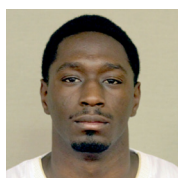
3 Prince Cooper

Sophomore | Guard
6-4 | 215
Freeport, Bahamas
Miami-Dade College



20 Chinedu Amajoyi

Senior | Guard
6-3 | 195
Rancho Cucamonga, Calif.
Kilgore College



4 Mack Foster

Junior | Guard
6-2 | 185
Beulah, Miss.
East Mississippi CC



22 Lance Richard

R-Freshman | Guard
5-10 | 170
Monroe, La.
Sterlington HS



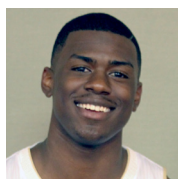
5 Jamaal Samuel

Junior | Forward
6-9 | 205
New Orleans, La.
Illinois State



32 Justin Roberson

Junior | Guard
6-1 | 185
Natchitoches, La.
Western Texas



10 Roderick Taylor

Freshman | Forward
6-8 | 210
Harker Heights, Texas
Harker Heights HS



Head Coach Keith Richard

ULM '82
Fifth Year at ULM
14th Year Overall
Baton Rouge, La.