



2014 ARKANSAS STATE BASEBALL

Chris Graddy, Media Relations Assistant • Office: 870-972-2707 • Cell: 870-340-7836

Email: cgraddy@astate.edu • Facebook.com/AStateBaseball • Twitter: @AStateGameDay #AStateBSB

Mailing Address: P.O. Box 1000, State University, AR 72467

2014 Schedule/Results

FEBRUARY

| Date | Opponent | Time/Result |
|------|---------------------|-------------|
| F14 | Miami (Ohio) | 6:00 p.m. |
| F15 | Miami (Ohio) | 2:00 p.m. |
| F16 | Miami (Ohio) | 1:00 p.m. |
| F18 | Arkansas-Monticello | 4:00 p.m. |
| F21 | Illinois State | 6:00 p.m. |
| F22 | Illinois State | 1:00 p.m. |
| F22 | Illinois State | 4:00 p.m. |
| F23 | Illinois State | 1:00 p.m. |
| F25 | SEMO | 6:00 p.m. |
| F28 | at UAB | 4:00 p.m. |

MARCH

| Date | Opponent | Time/Result |
|------|-----------------------|-------------|
| M1 | at UAB | 1:00 p.m. |
| M2 | at UAB | 1:00 p.m. |
| M4 | at Missouri State | 3:00 p.m. |
| M5 | at Missouri State | 3:00 p.m. |
| M7 | Creighton | 6:00 p.m. |
| M8 | Creighton | 4:00 p.m. |
| M9 | Creighton | 1:00 p.m. |
| M11 | at Murray State | 2:00 p.m. |
| M14 | Arkansas-Little Rock* | 6:00 p.m. |
| M15 | Arkansas-Little Rock* | 4:00 p.m. |
| M16 | Arkansas-Little Rock* | 1:00 p.m. |
| M19 | at Ole Miss | 6:30 p.m. |
| M21 | at UT Arlington* | 6:30 p.m. |
| M22 | at UT Arlington* | 6:30 p.m. |
| M23 | at UT Arlington* | 1:00 p.m. |
| M25 | Memphis | 6:30 p.m. |
| M28 | Texas State* | 6:00 p.m. |
| M29 | Texas State* | 4:00 p.m. |
| M30 | Texas State* | Noon |

APRIL

| Date | Opponent | Time/Result |
|------|----------------------|-------------|
| A1 | at SEMO | 6:00 p.m. |
| A4 | at Western Kentucky* | 6:00 p.m. |
| A5 | at Western Kentucky* | 3:00 p.m. |
| A6 | at Western Kentucky* | 1:00 p.m. |
| A8 | Central Arkansas | 6:30 p.m. |
| A11 | South Alabama* | 6:30 p.m. |
| A12 | South Alabama* | 6:30 p.m. |
| A13 | South Alabama* | 1:00 p.m. |
| A15 | Memphis | 6:30 p.m. |
| A18 | Louisiana-Monroe* | TBA |
| A19 | Louisiana-Monroe* | 6:00 p.m. |
| A20 | Louisiana-Monroe* | 1:00 p.m. |
| A22 | at Central Arkansas | 6:00 p.m. |
| A25 | at Georgia State* | 5:00 p.m. |
| A26 | at Georgia State* | 1:00 p.m. |
| A27 | at Georgia State* | Noon |
| A29 | Murray State | 6:30 p.m. |

MAY

| Date | Opponent | Time/Result |
|------|--------------------------|-------------|
| M2 | Louisiana-Lafayette* | 6:00 p.m. |
| M3 | Louisiana-Lafayette* | 6:00 p.m. |
| M4 | Louisiana-Lafayette* | 1:00 p.m. |
| M9 | Troy* | 6:00 p.m. |
| M10 | Troy* | 6:00 p.m. |
| M11 | Troy* | 1:00 p.m. |
| M13 | Ole Miss | 6:30 p.m. |
| M15 | at Arkansas-Little Rock* | 6:00 p.m. |
| M16 | at Arkansas-Little Rock* | 6:00 p.m. |
| M17 | at Arkansas-Little Rock* | 1:00 p.m. |

SUN BELT CONFERENCE TOURNAMENT

| Date | Opponent | Time/Result |
|--------|---------------------|-------------|
| M21-25 | Sun Belt Conference | TBA |

NCAA REGIONALS

| Date | Opponent | Time/Result |
|------|----------------|-------------|
| J1-6 | NCAA Regionals | TBA |



Arkansas State
Red Wolves

2014 Record: 0-0
SBC Record: 0-0
Head Coach: Tommy Raffo
Career Record: 142-142-1 (6)
Record at ASU: Same

STATISTICAL LEADERS

Avg:
Home Runs:
RBIs:
Wins:
Saves:
ERA:

LEADING OFF: The 66th season of baseball will get underway this weekend when Arkansas State hosts Miami (Ohio) in a three-game series Feb. 14-16 at Tomlinson Stadium. Opening night is set for Friday, Feb. 14 at 6 p.m. where senior right-hander Bradley Wallace will take the hill on Friday night for just the second time in his career at A-State. Junior left-hander Chandler Hawkins will get the call on Saturday, while sophomore David Owen is slated to pitch Sunday's finalie. A-State is 33-32 all-time on opening night and 3-2 under head coach Tommy Raffo. The Red Wolves have won 23 straight opening night games but lost the only matchup with the Redhawks in 1992 4-0. For in-game updates follow @AStateGameDay for the latest information. Friday and Sunday's games will be 95.3 The Ticket while Saturday's game will be on 101.3 FM.

Probable Pitching Rotation

FRIDAY (6:00 p.m.) vs MIAMI
RHP Bradley Wallace (Sr., 5-2, 4.33 ERA, 78K, 25BB)
vs
LHP Seth Varner (Sr., 2-1, 5.13 ERA, 25K, 17BB)

SATURDAY (2:00 p.m.) vs MIAMI
LHP Chandler Hawkins (Jr., 2-5, 6.24 ERA 42K, 29BB)
vs
RHP Nathan Williams (Jr., 4-5, 5.29 ERA, 48K, 43BB)

SUNDAY (1 p.m.) vs MIAMI
RHP David Owen (So. 2-2, 7.33 ERA, 25K, 15BB)
vs
RHP Ryan Powers (Jr. 1-3, 4.54 ERA, 22K, 9BB)

GAMES 1-3

Date: Feb. 14-16
First Pitch: Friday: 6 p.m.
Saturday: 2 p.m.
Sunday: 1 p.m.
Location: Jonesboro, Ark.
Stadium: Tomlinson/Kell Stadium
Radio: East Arkansas Broadcasters
95.3 FM The Ticket
970 AM KNEA
Radio Talent: Brad Bobo

SERIES

A-State vs Miami: 0-1
Raffo Record vs Miami: 0-0
Last Meeting: 4-0 Miami, 1992
Current Streak: A-State 1 Loss

MULTIMEDIA

Online Audio: AStateRedWolves.com
Live Stats: AStateRedWolves.com
Live Streaming: AStateRedWolves.com



Miami (Ohio)
Redhawks

2014 Record: 0-0
MAC Record: 0-0
Head Coach: Danny Hayden
Career Record: First Season
Record at Miami: First Season

STATISTICAL LEADERS

Avg:
Home Runs:
RBIs:
Wins:
Saves:
ERA:

Weather Report

| Fri. Feb. 14 | Sat. Feb 15 | Sun., Feb. 16 |
|--|---|---|
| Partly Cloudy High: 47 Low: 26 Wind: 9 W Rain: 40% | Partly Cloudy High: 45 Low: 34 Wind: 13 SSW Rain: 0 % | Partly Cloudy High: 51 Low: 43 Wind: 11 S Rain: 10% |

TALE OF THE TAPE

| HITTING | A-STATE | MIAMI |
|---------------------|---------|-------|
| Batting Average | N/A | N/A |
| Run Scores | N/A | N/A |
| Hits | N/A | N/A |
| Doubles | N/A | N/A |
| Triples | N/A | N/A |
| Home Runs | N/A | N/A |
| RBIs | N/A | N/A |
| Slugging Pct. | N/A | N/A |
| Walks | N/A | N/A |
| On Base Pct | N/A | N/A |
| Stolen Bases | N/A | N/A |
| PITCHING | A-STATE | MIAMI |
| ERA | N/A | N/A |
| Innings Pitched | N/A | N/A |
| Hits Allowed | N/A | N/A |
| Runs Allowed | N/A | N/A |
| Earned Runs Allowed | N/A | N/A |
| Strikeouts | N/A | N/A |
| Walks | N/A | N/A |

2014 Baseball**Preseason Coaches' Poll***(First Place Votes in Parentheses)*

1. UL Lafayette (8) - 98 pts
2. South Alabama (1) - 82 pts
3. Troy - 77 pts
4. Texas State - 57 pts
5. UT Arlington - 48 pts
6. Western Kentucky - 45 pts
7. **Arkansas State - 41 pts**
7. Georgia State - 41 pts
9. UALR - 33 pts
10. UL Monroe (1) - 28 pts

2014 Baseball Preseason**All-Conference Team**

Austin Robichaux (UL Lafayette, Junior, SP)

Matt Bell (South Alabama, Senior, SP)

Shane McCain (Troy, Senior, SP)

Ian Tompkins (WKU, Junior, RP)

Michael Strentz (UL Lafayette, RS-Junior, C)

Zach George (Arkansas State, RS-Junior, 1B)

Caden Bailey (Georgia State, Junior, 2B)

Blake Trahan (UL Lafayette, Sophomore, SS)

Tyler Girouard (UL Lafayette, Junior, 3B)

Seth Harrison (UL Lafayette, Senior, OF)

Matt Shortall (UT Arlington, Senior, OF)

Regan Flaherty (WKU, Senior, OF)

Caleb Adams (UL Lafayette, Junior, DH)

Scott Wilcox (WKU, Senior, UTIL)

2014 Baseball Preseason**Player of the Year**

Caleb Adams (UL Lafayette, Junior, DH)

2014 Baseball Preseason**Pitcher of the Year**

Austin Robichaux (UL Lafayette, Junior, SP)

**A-STATE/MIAMI (OHIO) SERIES**

- Arkansas State and Miami have met just one time with the Red Hawks earning a 4-0 victory in a tournament that was hosted by UTPA.

A-STATE IN SEASON OPENERS

- The Red Wolves are 33-32 all-time on opening day. Arkansas State won its season opener a year ago, defeating Bradley 10-5 at home.
- The Red Wolves have won 23 straight home openers dating back to the 1991 season.
- A-State is 3-2 in season openers under head coach Tommy Raffo, having defeated Bradley in 2013, Illinois in 2010 and Texas State in 2009.

PRESEASON SBC ALL-CONFERENCE HONORS

- Redshirt junior infielder Zach George was named to the 2014 Preseason All-Sun Belt Conference team, the first such honor of his career.
- George hit .333 a season ago but played just nine games before suffering a season-ending knee injury at Sam Houston State before the start of conference play. Despite the injury, George managed to hit one home run and drive in five runs and stole one base.
- In 2012, the Paragould, Ark., native finished the year with a .270 batting average and started in 52 of the Red Wolves' 57 games. He added six home runs and was second on the team with 41 RBIs. His 86 total bases and, .430 slugging percentage each ranked as the third best on the team.

WALLACE RECOGNIZED AS TOP SENIOR

- A-State senior pitcher Bradley Wallace was named as the top 100 seniors in the class of 2014 by Perfect Game USA.
- Wallace was selected as the 28th best senior baseball player in the class of 2014 and the 16th best right-handed pitcher in the class. He was one of just two players from the Sun Belt Conference on the list with Louisiana-Lafayette first basemen Chase Compton ranking 61st.

COLLEGESPORTSMADNESS.COM HONORS WALLACE

- Arkansas State senior pitcher Bradley Wallace was as a Preseason Second Team All-Conference selection by CollegeSportsMaddness.com
- Wallace finished the 2013 season with a 5-2 record and a 4.33 ERA and was the Red Wolves' No. 2 starter on a pitching staff that set the school record for most strikeouts in season. He had 78 punch outs in 70.2 innings of work and had the second most wins of any pitcher on the team.

STREAKS TO WATCH

| Player | No. | Streak Type |
|--------------|-----|--------------|
| Dustin Jones | 11 | Hits |
| Dustin Jones | 11 | Reached Base |
| Zach George | 9 | Reached Base |

GOING TO THE SHOW

- Senior right-hander Daniel Wright became A-State's second highest draft pick in the modern draft era after he was selected in the 10th round by the Cincinnati Reds last season.
- Fellow senior Logan Uxa was also selected by the Cincinnati Reds in the 32nd round.

PITCHING STAFF SETS RECORDS

- The 2013 staff struck out 487 batters, breaking the record by 80 strikeouts, which had stood for over 15 years.

2014 Roster

| # | NAME | POS | B/T | HT | WT | CL | HOMETOWN (PREVIOUS SCHOOL) |
|----|-------------------|-------|-----|------|-----|-------|--|
| 1 | Eric Wilcoxson | INF | R/R | 5-10 | 180 | Fr | Walnut Ridge, Ark. (Walnut Ridge HS) |
| 3 | Dustin Jones | INF | R/R | 5-10 | 150 | Sr | Jonesboro, Ark. (Valley View HS) |
| 4 | Lucas Feddersen | INF | R/R | 5-10 | 180 | Jr-TR | Houston, Texas (Crowder CC) |
| 5 | Zach Maggio | INF | R/R | 5-11 | 180 | Jr-RS | Edwardsville, Ill. (Edwardsville HS) |
| 6 | Austin Baker | OF | L/R | 5-11 | 180 | So | Montesano, Wash. (Montesano HS) |
| 7 | Zach George | INF | S/R | 6-2 | 195 | Jr-RS | Paragould, Ark. (Greene Tech HS) |
| 8 | Stuart Levy | C | R/R | 6-2 | 185 | Jr | Little Rock, Ark. (Benton HS) |
| 9 | Logan Dollins | INF | R/R | 5-11 | 170 | Fr-RS | Kennett, Mo. (Kennett HS) |
| 10 | Kaleb Brown | OF | R/R | 5-10 | 160 | Jr-RS | Jonesboro, Ark. (Valley View HS) |
| 11 | Kevin Fitzpatrick | OF | R/R | 6-3 | 190 | So | Red Banks, Miss. (Marshall Academy) |
| 12 | Tanner Murray | C | R/R | 6-4 | 200 | Jr | Piggott, Ark. (Piggott HS) |
| 13 | David Owen | RHP | R/R | 6-0 | 190 | So | Millington, Tenn. (Tipton-Rosemark) |
| 14 | Chandler Hawkins | LHP | L/L | 6-1 | 170 | Jr | Memphis, Tenn. (Bartlett HS) |
| 15 | Tanner Gainer | RHP | R/R | 6-1 | 200 | Jr-TR | Baldwyn, Miss. (Northeast Miss. CC) |
| 16 | Bryan Ayers | RHP | R/R | 6-4 | 190 | Fr | Vilonia, Ark. (Vilonia HS) |
| 17 | Coulton Lee | LHP | L/L | 6-1 | 205 | Fr | Benton, Ark. (Benton HS) |
| 18 | Cody Woodhouse | RHP | R/R | 6-5 | 190 | Sr | Mountain Home, Ark. (Mt. Home HS) |
| 20 | Morgan Croft | RHP | R/R | 6-2 | 225 | Sr-RS | Broken Arrow, Okla. (E. Okla. State) |
| 21 | Jon Glidewell | LHP | R/L | 6-3 | 180 | Jr-RS | Wentzville, Mo. (Timberland HS) |
| 23 | Adam Grantham | RHP | R/R | 6-2 | 195 | So | Kennett, Mo. (Kennett HS) |
| 24 | Bradley Wallace | RHP | R/R | 6-2 | 175 | Sr | Rison, Ark. (Woodlawn HS) |
| 25 | Tyler Hardie | C | L/R | 6-0 | 205 | Fr | Georgetown, Canada (Christ the King) |
| 26 | Collin Massanelli | OF | L/R | 6-0 | 190 | Jr | Pine Bluff, Ark. (Watson Chapel HS) |
| 27 | Ty Michelotti | OF | L/L | 5-11 | 198 | Jr-TR | Memphis, Tenn. (Southwest Tenn. CC) |
| 28 | Matt Burgess | INF | L/L | 6-4 | 240 | Jr-TR | Greenbrier, Ark. (Crowder CC) |
| 29 | J.D. Rainwater | INF | L/R | 6-2 | 235 | Fr | Jonesboro, Ark. (Jonesboro HS) |
| 30 | Derek Birginske | RHP | R/R | 6-0 | 190 | So | Russellville, Ark. (Russellville HS) |
| 32 | Daltan Lovell | C | R/R | 5-10 | 180 | Fr | Harrison, Ark. (Harrison HS) |
| 33 | J.C. Neighbors | LHP | L/L | 5-11 | 180 | Jr-TR | League City, Texas (Blinn College) |
| 34 | Colton Kibler | RHP | R/R | 5-11 | 170 | Jr-TR | Jonesboro, Ark. (Garden City CC) |
| 35 | Brett Nickle | INF | L/L | 6-4 | 270 | Fr | Olathe, Kansas (Olathe South HS) |
| 36 | Tyler Zuber | RHP | R/R | 5-10 | 185 | Fr | White Hall, Ark. (White Hall HS) |
| 38 | Kevin Garner | OF/P | L/L | 5-11 | 180 | Fr | Little Rock, Ark. (Little Rock Central HS) |
| 39 | Tanner Ring | INF/P | R/R | 6-1 | 170 | So | Batesville, Ark. (Batesville HS) |
| 40 | Joe Schrimpf | INF | S/R | 5-10 | 192 | Fr | St. Louis, Mo. (Christian Brothers HS) |

Coaching Staff

Head Coach: Tommy Raffo

Pitching Coach: Tigh Dicksonson

Assistant Coach: Anthony Everman

Volunteer Assistant Coach: Noah Sanders

Director of Operations: Jon Garner

Athletic Trainer: Hiroki Yoshimoto

Pronunciation Guide

5 - Zach Maggio - Ma-Gee-O

16 - Bryan Ayers - Airs

21 - Jon Glidewell - Glide-Well

26 - Collin Massanelli - Mass-Uh-Nail-E

27 - Ty Michelotti - Mickle-ot-E

37 - Tighe Dicksonson - Ty



JUNIOR SEASON (2013): Appeared in 14 games and made 13 starts, the second most on the team ... had a 5-2 record on the year and the second most wins of any pitcher ... had a 4.33 ERA and career best 78 strikeouts on the season ... tossed a career-high seven innings twice on the year with first coming on April 7 against Western Kentucky and then against on April 20 against Louisiana-Monroe ... struck out a career-high 12 batters on April 7 against Western Kentucky ... he also retired 18 straight at one point in the game ... his .243 opposing batting average with the eighth best in the league ... his 78 strikeouts were the ninth most in the Sun Belt Conference ... he struck out 29 batters looking, the fifth most in the league.

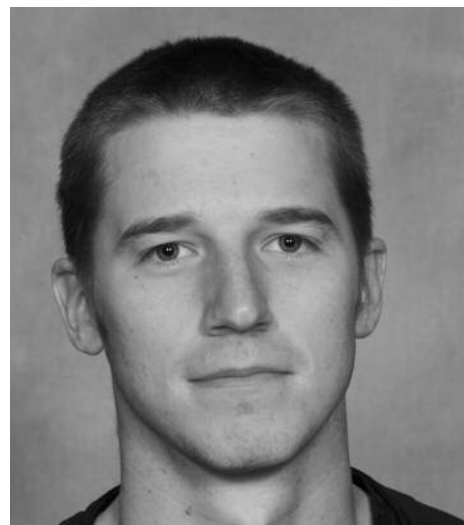
SOPHOMRE SEASON (2012): Appeared in 17 games and made three starts...had an 8.29 ERA with 32 strikeouts...tossed a career best six innings against Evansville on Feb. 25...also had a career high five strikeouts in the game.

FRESHMAN SEASON (2011): Made 15 appearances, drawing one start...posted an ERA of 6.75 as a true freshman... worked 18.2 innings, striking out 22 batters...issued eight walks...struck out four in 2.2 innings against ULM April 9...earned two saves.

HIGH SCHOOL: Pitched four years at Woodlawn High School in Pine Bluff, Ark...was named a Pre Season Under Armour All-American prior to the start of his senior season...pitched 69 innings with 113 strikeouts for a 1.12 ERA as a junior while putting together a 12-2 record which included two no hitters...named all-state as a junior...also played basketball.

PERSONAL: Born September 12, 1992 ... majoring in Computer Science at Arkansas State...son of Keith and Cindi Wallace.

| | ERA | W-L | AP | GS | CG | SV | IP | H | R | ER | BB | SO | BF | AVG | WP | HB |
|---------------|-------------|------------|-----------|-----------|----------|----------|--------------|------------|-----------|-----------|-----------|------------|------------|-------------|-----------|-----------|
| 2011 | 6.75 | 0-0 | 15 | 1 | 0 | 2 | 18.2 | 20 | 15 | 14 | 8 | 22 | 87 | .286 | 4 | 5 |
| 2012 | 8.29 | 3-1 | 17 | 3 | 0 | 1 | 33.2 | 50 | 32 | 31 | 15 | 32 | 168 | .347 | 7 | 6 |
| 2013 | 4.33 | 5-2 | 14 | 13 | 0 | 0 | 70.2 | 65 | 38 | 34 | 25 | 78 | 310 | .243 | 6 | 8 |
| Totals | 5.78 | 8-3 | 46 | 17 | 0 | 3 | 123.0 | 135 | 85 | 79 | 48 | 132 | 565 | .281 | 17 | 19 |



Bradley Wallace

Pitcher - Senior - 3L
6-2 - 175 - R/R
Rison, Arkansas
Woodlawn HS

WALLACE CAREER HIGHS

IP: 7 - Twice
Strikeouts: 12 - WKU (April 7, 2013)
BF: 28 - Three Times
FC: 3 - Three Times
Assists: 4 - Four Times

Bradley Wallace
Game-by-Game

Date Opponent GS IP H R ER BB SO

Totals

SOPHOMORE SEASON (2013): Appeared in 17 game and made seven starts, which was the fourth most starts on the team had a 2-5 record on the year ... struck out 42 batters in 49 innings of work ... had a career-high seven innings pitched against Alabama-Birmingham on March 9 ... struck out a career-high seven against Florida Atlantic on March 23 ... his 19 appearances where the third most on the team ... his 42 strikeouts the fifth most on the team.

FRESHMAN SEASON (2012): Appeared in 17 games and made two starts...gave up 26 hits and 14 runs in 18.2 innings of work...struck out nine batters and walked just seven on the year.

HIGH SCHOOL: Played four seasons at Bartlett High School in Memphis.

PERSONAL: Bron February 28, 1993 ...parents are Amy and Mark Hawkins.

| | ERA | W-L | AP | GS | CG | SV | IP | H | R | ER | BB | SO | BF | AVG | WP | HB |
|---------------|-------------|------------|-----------|----------|----------|----------|-------------|-----------|-----------|-----------|-----------|-----------|------------|-------------|----------|----------|
| 2012 | 6.75 | 2-2 | 17 | 2 | 0 | 0 | 18.2 | 26 | 14 | 14 | 7 | 9 | 92 | .329 | 3 | 4 |
| 2013 | 6.24 | 2-5 | 19 | 7 | 0 | 0 | 49.0 | 60 | 37 | 34 | 29 | 41 | 236 | .306 | 3 | 3 |
| Totals | 6.38 | 4-7 | 36 | 9 | 0 | 0 | 67.2 | 86 | 51 | 48 | 36 | 51 | 328 | .313 | 6 | 7 |



Chandler Hawkins

Pitcher - Junior - 2L
6-1 - 170 - L/L
Memphis, Tennessee
Bartlett HS

HAWKINS CAREER HIGHS

IP: 7 - UAB (March 9, 2013)
Strikeouts: 7 - FAU (March 23, 2013)
BF: 28 - Twice
FC: 3 - WKU (April 6, 2013)
Assists: 3 - WKU (April 6, 2013)

**Chandler Hawkins
 Game-by-Game**

Date Opponent GS IP H R ER BB SO

Totals

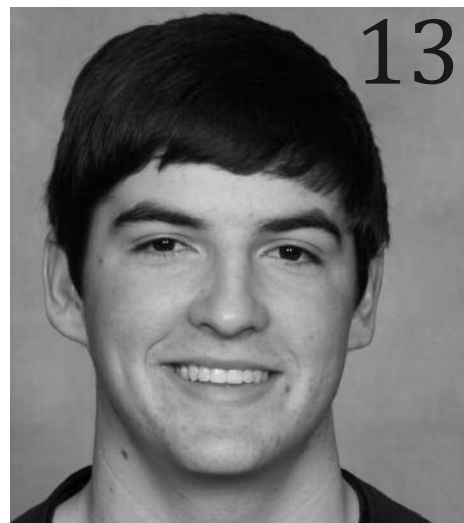
| Date | Opponent | GS | IP | H | R | ER | BB | SO |
|--------|----------|----|----|---|---|----|----|----|
| Totals | | | | | | | | |

FRESHMAN SEASON (2013): Appeared in 12 games and made two starts on the season ... finished with a 2-2 record recorded 25 strikeouts with a 7.23 ERA ... struck out a season-high five on April 30 against Memphis ... picked up his first career-win on April 2 against Southeast Missouri State ... made his first career start against Ole Miss on April 23 ... missed the first half of the season due to injury.

HIGH SCHOOL: Member of 2009 State Runner-Ups and 2012 team that made the state semi-finals at Tipton-Rosemark Academy in Millington, TN ... Made All-State for the Rebels.

PERSONAL: Born October 21, 1993 ... son of Jeanine and Keith Owen and has a sister named Kellie ... enjoys fishing.

| | ERA | W-L | AP | GS | CG | SV | IP | H | R | ER | BB | SO | BF | AVG | WP | HB |
|---------------|-------------|------------|-----------|----------|----------|----------|-------------|-----------|-----------|-----------|-----------|-----------|------------|-------------|----------|----------|
| 2013 | 7.23 | 2-2 | 12 | 2 | 0 | 0 | 23.2 | 23 | 20 | 19 | 15 | 25 | 111 | .253 | 2 | 3 |
| Totals | 7.23 | 2-2 | 12 | 2 | 0 | 0 | 23.2 | 23 | 20 | 19 | 15 | 25 | 111 | .253 | 2 | 3 |



David Owen

Pitcher - Soph. - 1L
6-0 - 190 - R/R
Millington, Tennessee
Tipton-Rosemark

OWEN CAREER HIGHS

- IP:** 5 - Troy (May 12, 2013)
- Strikeouts:** 5 - Memp. (April 30, 2013)
- BF:** 22 - Troy (May 12, 2013)
- FC:** 2 - Troy (May 12, 2013)
- Assists:** 2 - Troy (May 12, 2013)

David Owen
Game-by-Game

Date Opponent GS IP H R ER BB SO

Totals

| Date | Opponent | GS | IP | H | R | ER | BB | SO |
|--------|----------|----|----|---|---|----|----|----|
| Totals | | | | | | | | |



stAte
Games Summary for Arkansas State (as of Feb 13, 2014)
(All games)



| Score by innings | 1 | 2 | 3 | 4 | 5 | 6 | 7 | 8 | 9 | EX | Total |
|------------------|----|----|----|----|----|----|----|----|----|----|-------|
| Arkansas State | 42 | 24 | 36 | 24 | 20 | 37 | 38 | 31 | 28 | 5 | 285 |
| Opponents | 43 | 35 | 19 | 44 | 35 | 44 | 32 | 42 | 10 | 12 | 316 |

Record when ...

| | | | |
|----------------------|-------|----------------------|-------|
| Overall | 28-31 | After 6 leading | 20-3 |
| Conference | 12-18 | trailing | 4-23 |
| Non-Conference | 16-13 | tied | 4-5 |
| Home games | 16-14 | After 7 leading | 21-1 |
| Away games | 10-15 | trailing | 3-24 |
| Neutral site | 2-2 | tied | 4-6 |
| Day games | 20-21 | After 8 leading | 22-0 |
| Night games | 8-10 | trailing | 2-26 |
| vs Left starter | 11-12 | tied | 4-5 |
| vs Right starter | 17-19 | | |
| 1-Run games | 9-10 | Hit 0 home runs | 20-23 |
| 2-Run games | 6-3 | ... 1 home run | 5-7 |
| 5+Run games | 9-12 | ... 2+ home runs | 3-1 |
| Extra innings | 4-6 | | |
| Shutouts | 2-3 | Opponent 0 home runs | 18-14 |
| | | 1 home run | 7-12 |
| Scoring 0-2 runs | 1-19 | 2+ HRs | 3-5 |
| 3-5 runs | 8-8 | | |
| 6-9 runs | 11-4 | Made 0 errors | 12-11 |
| 10+ runs | 8-0 | ... 1 error | 11-9 |
| | | ... 2+ errors | 5-11 |
| Opponent 0-2 runs | 11-4 | | |
| 3-5 runs | 12-10 | Opp. made 0 errors | 9-10 |
| 6-9 runs | 4-9 | 1 error | 6-13 |
| 10+ runs | 1-8 | 2+ errors | 13-8 |
| Scored in 1st inning | 10-6 | Out-hit opponent | 21-6 |
| Opp. scored in 1st | 8-14 | Out-hit by opponent | 5-21 |
| Scores first | 16-9 | Hits are tied | 2-4 |
| Opp. scores first | 12-22 | | |

Record when team scores:

| | | | | | | | | | | | |
|------|-----|-----|-----|-----|-----|-----|-----|-----|-----|-----|-----|
| Runs | 0 | 1 | 2 | 3 | 4 | 5 | 6 | 7 | 8 | 9 | 10+ |
| W-L | 0-3 | 0-9 | 1-7 | 4-3 | 1-4 | 3-1 | 4-3 | 3-1 | 1-0 | 3-0 | 8-0 |

Record when opponent scores:

| | | | | | | | | | | | |
|------|-----|-----|-----|-----|-----|-----|-----|-----|-----|-----|-----|
| Runs | 0 | 1 | 2 | 3 | 4 | 5 | 6 | 7 | 8 | 9 | 10+ |
| W-L | 2-0 | 3-2 | 6-2 | 6-3 | 2-4 | 4-3 | 1-3 | 1-1 | 1-4 | 1-1 | 1-8 |

Record when leading after:

| | | | | | | | | |
|------|-----|------|------|------|------|------|------|------|
| Inn. | 1 | 2 | 3 | 4 | 5 | 6 | 7 | 8 |
| W-L | 9-4 | 13-5 | 16-5 | 16-3 | 17-4 | 20-3 | 21-1 | 22-0 |

Record when trailing after:

| | | | | | | | | |
|------|------|------|------|------|------|------|------|------|
| Inn. | 1 | 2 | 3 | 4 | 5 | 6 | 7 | 8 |
| W-L | 4-14 | 5-17 | 6-19 | 8-22 | 7-22 | 4-23 | 3-24 | 2-26 |

Record when tied after:

| | | | | | | | | |
|------|-------|------|-----|-----|-----|-----|-----|-----|
| Inn. | 1 | 2 | 3 | 4 | 5 | 6 | 7 | 8 |
| W-L | 15-13 | 10-9 | 6-7 | 4-6 | 4-5 | 4-5 | 4-6 | 4-5 |

Current losing streak: 1
 Longest winning streak: 4
 Longest losing streak: 8

Home attendance : 10428 (27 dates avg = 386)
 Away attendance : 31863 (28 dates avg = 1137)
 Total attendance: 42291 (55 dates avg = 768)



stAte
Statistics Summary for Arkansas State (as of Feb 13, 2014)
(All games)



Record: 28-31 Home: 16-14 Away: 10-15 Neutral: 2-2 Sun Belt: 12-18

| Date | Opponent | Score | Player | avg | slug | ob% | g | ab | r | h | 2b | 3b | hr | rbi | bb | so | sb | cs | e | |
|-------|------------------------|---------|-------------------------|------------|------------|------------|-----------|-----------|-----------|-----------|-----------|----------|-----------|--------------|-----------|-----------|------------|-----------|----|---|
| 2/15 | BRADLEY | w 10-5 | Roberts, Ryan | .313 | .440 | .432 | 50 | 150 | 21 | 47 | 7 | 0 | 4 | 25 | 31 | 42 | 0 | 0 | 6 | |
| 2/16 | BRADLEY | w 10-1 | Emery, Ryan | .294 | .379 | .424 | 59 | 211 | 35 | 62 | 13 | 1 | 1 | 33 | 45 | 48 | 4 | 1 | 2 | |
| 2/17 | BRADLEY | w 12-2 | Uxa, Logan | .268 | .375 | .384 | 59 | 224 | 37 | 60 | 13 | 1 | 3 | 23 | 36 | 34 | 3 | 2 | 8 | |
| 2/19 | at Memphis | w 3-2 | Massanelli, Collin | .267 | .372 | .357 | 55 | 191 | 23 | 51 | 9 | 1 | 1 | 3 | 21 | 22 | 61 | 5 | 2 | 1 |
| 2/23 | WESTERN ILLINOIS | L 1-2 | Jones, Dustin | .260 | .343 | .333 | 59 | 204 | 30 | 53 | 13 | 2 | 0 | 25 | 18 | 44 | 6 | 0 | 8 | |
| 2/23 | WESTERN ILLINOIS | w 6-3 | Johnson, Claude | .259 | .324 | .357 | 50 | 185 | 25 | 48 | 9 | 0 | 1 | 18 | 23 | 33 | 0 | 1 | 11 | |
| 2/24 | WESTERN ILLINOIS | w 14-6 | Potts, Alex | .258 | .306 | .373 | 58 | 186 | 32 | 48 | 6 | 0 | 1 | 20 | 27 | 48 | 1 | 0 | 6 | |
| 2/26 | at #2 Vanderbilt | L 3-7 | ----- | | | | | | | | | | | | | | | | | |
| 3/1 | at Sam Houston State | w 5-3 | George, Zach | .333 | .545 | .522 | 9 | 33 | 12 | 11 | 2 | 1 | 1 | 5 | 11 | 3 | 1 | 1 | 0 | |
| 3/2 | at Sam Houston State | L 1-8 | Fitzpatrick, Kevin | .283 | .370 | .321 | 45 | 127 | 20 | 36 | 4 | 2 | 1 | 15 | 5 | 25 | 5 | 2 | 4 | |
| 3/3 | at Sam Houston State | L 6-11 | Brown, Kaleb | .262 | .286 | .315 | 47 | 84 | 11 | 22 | 2 | 0 | 0 | 7 | 3 | 17 | 3 | 1 | 0 | |
| 3/5 | UT-MARTIN | w 9-0 | Baker, Austin | .207 | .342 | .323 | 43 | 111 | 18 | 23 | 4 | 1 | 3 | 14 | 18 | 36 | 0 | 1 | 3 | |
| 3/8 | ALABAMA-BIRMINGHAM | w 2-1 | Levy, Stuart | .202 | .349 | .266 | 47 | 129 | 10 | 26 | 10 | 0 | 3 | 16 | 11 | 30 | 0 | 0 | 3 | |
| 3/9 | ALABAMA-BIRMINGHAM | w 8-1 | Yeo, Ethan | .182 | .182 | .372 | 21 | 33 | 1 | 6 | 0 | 0 | 0 | 4 | 10 | 9 | 0 | 0 | 0 | |
| 3/9 | ALABAMA-BIRMINGHAM | L 2-4 | Burks, Drew | .176 | .206 | .333 | 22 | 34 | 5 | 6 | 1 | 0 | 0 | 3 | 6 | 14 | 0 | 0 | 0 | |
| 3/12 | MISSOURI STATE | L 2-6 | Ring, Tanner | .143 | .254 | .217 | 24 | 63 | 4 | 9 | 4 | 0 | 1 | 3 | 3 | 17 | 0 | 0 | 5 | |
| 3/13 | MISSOURI STATE | w 7-5 | Birginske, Derek | .121 | .212 | .216 | 15 | 33 | 1 | 4 | 1 | 1 | 0 | 3 | 4 | 8 | 0 | 0 | 0 | |
| *3/15 | at UALR | w 6-3 | Grantham, Adam | .000 | .000 | .000 | 4 | 0 | 0 | 0 | 0 | 0 | 0 | 0 | 0 | 0 | 0 | 0 | 0 | |
| *3/16 | at UALR | w 9-7 | Totals | .256 | .348 | .358 | 59 | 1998 | 285 | 512 | 98 | 10 | 22 | 245 | 273 | 469 | 28 | 11 | 64 | |
| *3/17 | at UALR | w 7-5 | Opponents | .259 | .394 | .345 | 59 | 2022 | 316 | 524 | 105 | 19 | 43 | 293 | 224 | 487 | 53 | 27 | 72 | |
| 3/19 | at Missouri | L 1-5 | | | | | | | | | | | | | | | | | | |
| 3/19 | at Missouri | w 10-3 | | | | | | | | | | | | | | | | | | |
| *3/23 | FLORIDA ATLANTIC | w 3-2 | | | | | | | | | | | | | | | | | | |
| *3/23 | FLORIDA ATLANTIC | L 5-10 | | | | | | | | | | | | | | | | | | |
| *3/24 | FLORIDA ATLANTIC | L 2-3 | | | | | | | | | | | | | | | | | | |
| 3/27 | at #11 Ole Miss | L 4-10 | | | | | | | | | | | | | | | | | | |
| *3/29 | at FIU | L 0-1 | Player | era | w-l | app | gs | cg | sh | sv | ip | h | r | er | bb | so | avg | hr | | |
| *3/30 | at FIU | L 7-8 | Wright, Daniel | 3.18 | 6-5 | 17 | 15 | 3 | 1 | 1 | 110.1 | 92 | 45 | 39 | 26 | 96 | .224 | 5 | | |
| *3/31 | at FIU | L 6-9 | Koch, John | 3.95 | 4-6 | 25 | 4 | 0 | 0 | 5 | 68.1 | 73 | 35 | 30 | 31 | 62 | .271 | 4 | | |
| 4/2 | SEMO | w 9-8 | Wallace, Bradley | 4.33 | 5-2 | 14 | 13 | 0 | 0 | 0 | 70.2 | 65 | 38 | 34 | 25 | 78 | .243 | 7 | | |
| *4/5 | WESTERN KENTUCKY | w 6-0 | ----- | | | | | | | | | | | | | | | | | |
| *4/6 | WESTERN KENTUCKY | L 2-4 | Bax, Jacob | 0.00 | 0-0 | 1 | 0 | 0 | 0 | 0 | 0.0 | 1 | 0 | 0 | 0 | 0 | 1.000 | 0 | | |
| *4/7 | WESTERN KENTUCKY | w 5-3 | Ring, Tanner | 2.70 | 2-0 | 18 | 0 | 0 | 0 | 2 | 26.2 | 18 | 10 | 8 | 10 | 32 | .194 | 0 | | |
| *4/12 | SOUTH ALABAMA | L 2-6 | Croft, Morgan | 3.00 | 0-0 | 3 | 0 | 0 | 0 | 0 | 3.0 | 3 | 1 | 1 | 1 | 3 | .250 | 0 | | |
| *4/13 | SOUTH ALABAMA | L 2-20 | Woodhouse, Cody | 3.38 | 0-2 | 16 | 8 | 0 | 0 | 0 | 53.1 | 49 | 24 | 20 | 11 | 36 | .247 | 6 | | |
| *4/14 | SOUTH ALABAMA | L 1-4 | Birginske, Derek | 5.00 | 1-2 | 10 | 3 | 0 | 0 | 0 | 18.0 | 15 | 12 | 10 | 8 | 14 | .242 | 1 | | |
| 4/16 | at SEMO | w 5-4 | Hawkins, Chandler | 6.24 | 2-5 | 19 | 7 | 0 | 0 | 0 | 49.0 | 60 | 37 | 34 | 29 | 42 | .306 | 7 | | |
| *4/19 | at Louisiana-Monroe | w 7-5 | McWilliams, S. | 6.39 | 3-6 | 25 | 3 | 0 | 0 | 0 | 49.1 | 50 | 38 | 35 | 30 | 43 | .279 | 3 | | |
| *4/20 | at Louisiana-Monroe | w 6-2 | Grantham, Adam | 6.48 | 1-0 | 17 | 4 | 0 | 0 | 1 | 25.0 | 29 | 19 | 18 | 16 | 30 | .305 | 2 | | |
| *4/21 | at Louisiana-Monroe | L 1-3 | Milhouse, Brandon | 6.63 | 1-0 | 11 | 0 | 0 | 0 | 0 | 19.0 | 19 | 14 | 14 | 9 | 7 | .257 | 3 | | |
| 4/23 | #16 OLE MISS | L 1-11 | Winfield, Tyler | 7.11 | 0-1 | 7 | 0 | 0 | 0 | 0 | 6.1 | 10 | 5 | 5 | 3 | 5 | .385 | 0 | | |
| *4/26 | MIDDLE TENNESSEE | w 4-3 | Owen, David | 7.23 | 2-2 | 12 | 2 | 0 | 0 | 0 | 23.2 | 23 | 20 | 19 | 15 | 25 | .253 | 4 | | |
| *4/28 | MIDDLE TENNESSEE | w 13-9 | Luthe, Jon | 10.80 | 0-0 | 5 | 0 | 0 | 0 | 0 | 3.1 | 2 | 4 | 4 | 5 | 4 | .167 | 1 | | |
| *4/28 | MIDDLE TENNESSEE | L 1-2 | Shordon, Levi | 15.26 | 1-0 | 12 | 0 | 0 | 0 | 1 | 7.2 | 15 | 14 | 13 | 5 | 10 | .405 | 0 | | |
| 4/30 | MEMPHIS | L 0-6 | Totals | 4.72 | 28-31 | 59 | 59 | 3 | 2 | 10 | 533.2 | 524 | 316 | 280 | 224 | 487 | .259 | 43 | | |
| *5/3 | at Louisiana-Lafayette | L 4-11 | Opponents | 3.67 | 31-28 | 59 | 59 | 3 | 3 | 9 | 532.1 | 512 | 285 | 217 | 273 | 469 | .256 | 22 | | |
| *5/4 | at Louisiana-Lafayette | L 6-14 | | | | | | | | | | | | | | | | | | |
| *5/5 | at Louisiana-Lafayette | L 1-8 | | | | | | | | | | | | | | | | | | |
| 5/8 | at Tennessee | L 3-12 | | | | | | | | | | | | | | | | | | |
| *5/10 | at #25 Troy | L 0-1 | | | | | | | | | | | | | | | | | | |
| *5/11 | at #25 Troy | L 3-4 | | | | | | | | | | | | | | | | | | |
| *5/12 | at #25 Troy | w 15-14 | | | | | | | | | | | | | | | | | | |
| *5/16 | UALR | w 3-2 | | | | | | | | | | | | | | | | | | |
| *5/17 | UALR | L 4-5 | | | | | | | | | | | | | | | | | | |
| *5/18 | UALR | L 1-8 | | | | | | | | | | | | | | | | | | |
| 5/22 | vs Troy | L 2-3 | Score by innings | 1 | 2 | 3 | 4 | 5 | 6 | 7 | 8 | 9 | EX | Total | | | | | | |
| 5/23 | vs Western Kentucky | w 10-4 | Arkansas State | 42 | 24 | 36 | 24 | 20 | 37 | 38 | 31 | 28 | 5 | 285 | | | | | | |
| 5/24 | vs #21 Troy | w 3-2 | Opponents | 43 | 35 | 19 | 44 | 35 | 44 | 32 | 42 | 10 | 12 | 316 | | | | | | |
| 5/25 | vs Florida Atlantic | L 4-5 | | | | | | | | | | | | | | | | | | |

LOB - Team (517), Opp (452). DPs turned - Team (32), Opp (56). TPs turned - Team (1). CI - Team (2), Roberts, R. 2. IBB - Team (10), Uxa, L. 4, Johnson, C. 3, Emery, R. 1, Yeo, Ethan 1, Massanelli 1, Opp (6). Picked off - Fitzpatrick 2, Potts, A. 2, Brown, K. 1, Burks, D. 1, Emery, R. 1, Uxa, L. 1.

PB - Team (5), Roberts, R. 4, Levy, S. 1, Opp (19). Pickoffs - Team (10), Wright, D. 5, Levy, S. 1, Hawkins, C. 1, Woodhouse, C. 1, Ring, T. 1, Wallace, B. 1, Opp (8). SBA/ATT - Levy, S. (26-40), Roberts, R. (26-36), Wallace, B. (12-16), Hawkins, C. (10-12), McWilliams (6-11), Woodhouse, C. (6-10), Wright, D. (5-9), Koch, J. (7-8), Birginske (2-4), Ring, T. (2-3), Grantham, A. (1-3), Owen, D. (0-2), Shordon, L. (1-1), Winfield, T. (1-1).

Win-loss breakouts: Day 20-21; Night 8-10; vs Left 11-12; vs Right 17-19; 1-run games 9-10; 2-run games 6-3; 5+run games 9-12; Extra inns 4-6; Shutouts 2-3. Current streak: Lost 1; Longest winning streak: 4; Longest losing streak: 8. Attendance: Home 10428 (avg 386); Away 31863 (avg 1137); Total 42291 (avg 768).

* = Conference game

