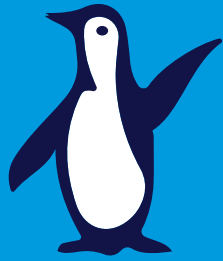


# STAY HOME



with  SHEDD AQUARIUM



# Chomper Challenge



Depending on their environment and anatomy, different types of sharks have varying feeding strategies. In this activity, you will create your own upcycled, classic cup-and-ball game inspired by an aquatic food chain. Select your favorite shark to inspire your creation. Make sure you carefully consider the features of your shark's mouth, so your mouth design is correctly suited for the food your shark eats!

- Check out Shedd Aquarium's website for more shark inspiration!

[sheddaquarium.org/stories/meet-the-sharks](https://sheddaquarium.org/stories/meet-the-sharks)

**These activities are designed for families with children in grades 3-5.** Educators can see an overview of all activities and classroom recommendations at [sheddaquarium.org/files/shark-teachers-guide](https://sheddaquarium.org/files/shark-teachers-guide).



# Chomper Challenge

## MATERIALS

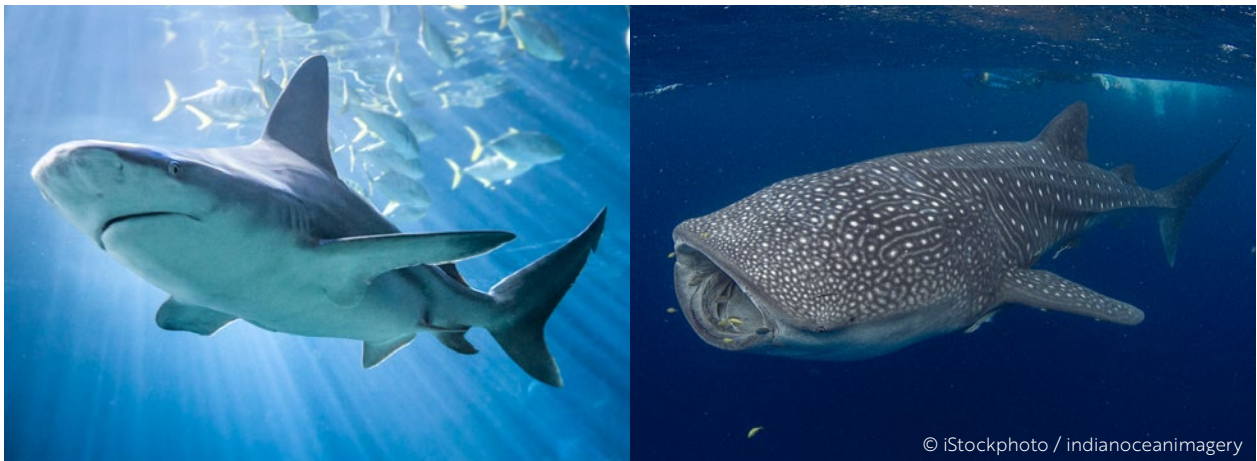
- **Plastic bottle with cap:** 1 liter is recommended, but any size will work!
- **Additional bottle cap:** 1 liter is recommended, but any size will work!
- **Paint or markers**
- **Scissors**
- **String, twine or floss**



## INSTRUCTIONS PART 1/6

**Step 1 • Research:** Choose which shark will inspire your design. Use the resources below to help you make your decision!

- Learn about the many different shark species at Shedd Aquarium:  
[sheddaquarium.org/sharks](http://sheddaquarium.org/sharks)
- Watch a video to learn about how sharks' different mouths help them eat!  
[youtube.com/watch?v=nyYC-qbzIPA](https://www.youtube.com/watch?v=nyYC-qbzIPA)



© iStockphoto / indianoceanimagery

# Chomper Challenge

## INSTRUCTIONS PART 2/6

**Step 2:** While researching, spend some time noticing how shark mouths are adapted to consume their prey items. Can you match the species of sharks shown below with their preferred prey item? *Draw a line between each shark and what you think it eats!*



Sandbar shark



Plankton



Zebra shark



Bony fishes



Whale shark



Clams

Answers: Sandbar sharks eat plankton, zebra sharks eat bony fish, whale sharks eat clams.





# Chomper Challenge

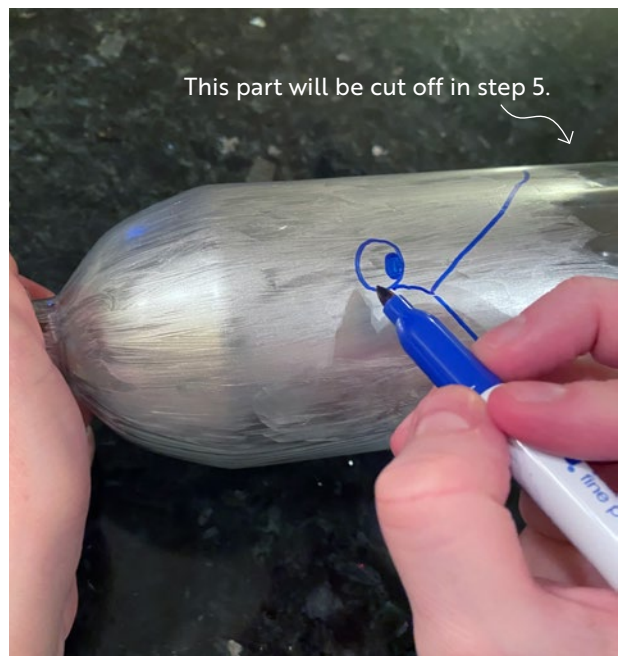
## INSTRUCTIONS PART 3/6

It's time to start constructing your shark cup-and-ball game! Gather the materials you will need on a flat, stable surface.

**Step 3:** Let's make the prey item for your shark (this piece will represent the ball part of your toy). Research the types of food your favorite shark eats. Then, grab the additional bottle cap (not the one that is on the plastic bottle, but another one). On this cap, you can paint or use markers to **decorate the cap with the shark's prey**. For example, if you chose a zebra shark, you might paint a clam on the bottle cap because zebra sharks eat clams.



**Step 4:** Next, you will decorate your plastic bottle to look like a shark. To draw your shark, **draw the mouth about halfway down the bottle** (you will end up cutting off the half without the bottle cap, so do not decorate this part). Does your shark have sharp teeth, crushing dental plates, or is it a filter feeder with small teeth? Draw the teeth accordingly. Then, move up the bottle a little bit towards the drinking end and **add eyes and any other facial features like nostrils or tassels**. **Moving further up the bottle, decorate the shark's body by adding different colors, gills and fins.**





# Chomper Challenge

## INSTRUCTIONS PART 4/6

### Step 5 • Request Adult Assistance:

#### Adult help will be required for this step!

Once the paint or marker designs have dried on the plastic bottle, ask an adult to help with **cutting off the bottom part of the bottle that is not decorated.**

**Adults:** pinching the side of the plastic bottle to form a crease and using a large pair of scissors to create a first cut will help you get started. You may choose to cut the bottom off cleanly, and then kids can use small cuts to cut between each tooth.



**Step 6:** Once your cap and shark are created and ready to go, **measure out and cut a piece of string equal to the length of your entire arm (about 12-20 inches).**



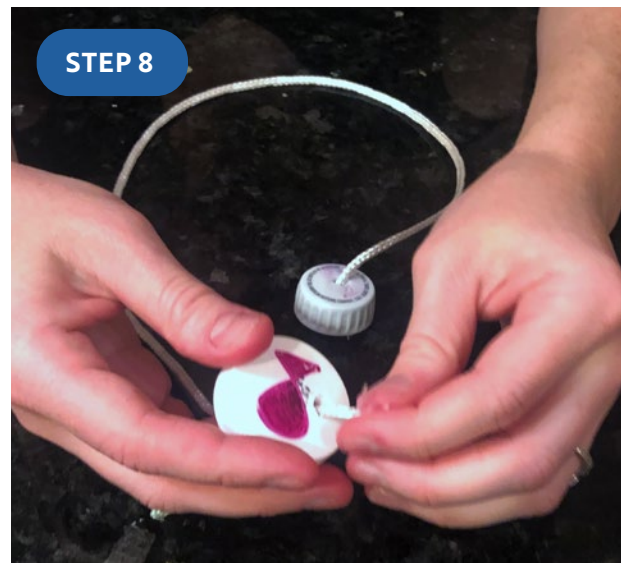
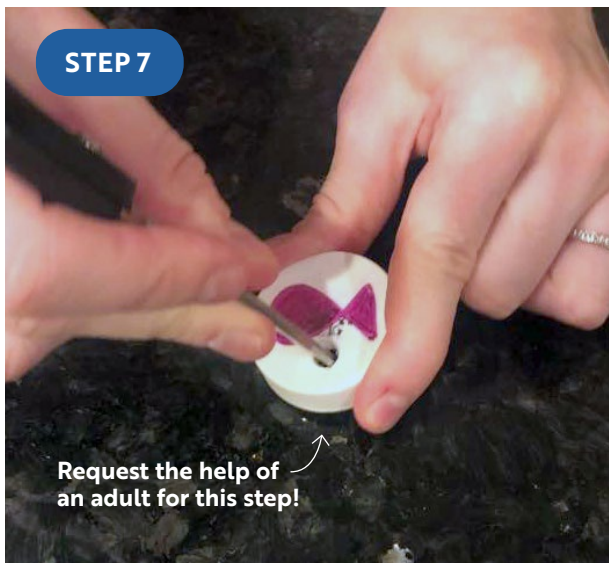
# Chomper Challenge

## INSTRUCTIONS PART 5/6

### Step 7 • Request Adult Assistance:

**Adult help will be required for this step!** Unscrew the cap from the plastic bottle and gather the other bottle cap that is decorated as a prey item. **An adult with scissors or a drill should puncture a small hole in each cap.**

Super glue or a hot glue gun can also be used to attach the string, rather than puncturing the caps.



**Step 8:** You're almost done! **Using knots, tie the bottle caps to each end of the string.**

For the bottle cap that belongs to your plastic bottle, tie a bulky knot on the **INSIDE** of the bottle cap instead of tying the string around the sides. By doing so, you will be able to screw the bottle cap back on the plastic bottle.

You can tie the prey bottle cap to the string in whatever way works best for you!





# Chomper Challenge

## INSTRUCTIONS PART 6/6

**Last Step:** Finally, screw the bottle cap back onto your plastic bottle. You're ready to play! Have fun challenging yourself and family members to swing and catch the prey item into the shark's mouth! How many can you get in a row?



### Want to do more?

- Sharks are often at the top of the food chain, meaning they are the top predators in an ecosystem. What if you wanted to make a cup-and-ball toy where the prey item was now going to be your predator? *For example, if you had a small fish as your prey item for the shark design, try decorating a plastic bottle as the small fish and investigate what the prey item would be.*
- Or consider creating another cup-and-ball toy from different aquatic animals. What other aquatic predator-prey combos could you use?

### SHARE WITH US!

We want to see your final product! Take a picture of your bottle-and-cap game and share it with us [@SheddLearning](#) using [#StayHomeWithShedd](#).