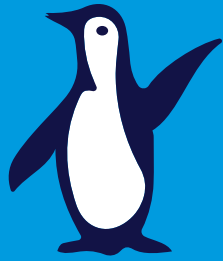


# STAY HOME



with  SHEDD AQUARIUM



# UnselFish Communities



Fish can be responsible and essential community members and work, just like humans. Fish are smart enough to cooperatively work together for the betterment of their population and community. Therefore, we need to protect and conserve habitats for all types of fish because they are dependent on each other within their ecosystems. Cooperation can look very different depending on the fish's role in the community, but the outcome is frequently beneficial to the entire ecosystem.

For example, fish can use trickery to help each other survive. While clownfish, like the ones in the photo above, provide cleaning services for sea anemones, they also lure prey so the anemones can easily grab a tasty meal with their tentacles. In return, sea anemones use the stinging tentacles to protect clownfish from predators. As responsible community members, they work together well!

*Continued on the next page >*

# UnselFish Communities



Afraid of swimming alongside sharks? Well that is not the case for remoras like the one shown attached to sea turtle Nickel's shell in the photo above. Although much smaller, the remora, a saltwater fish, takes full advantage of its close contact with sharks. Remoras are attracted to sharks, whales and other larger species and use them as resources for food. In return, sharks and whales receive grooming services including teeth cleaning by the smaller fish! In this cooperative relationship, both fish are smart enough to realize the benefits of hanging out together.

Humans continue to discover fishes' extraordinary intelligence by using technology like underwater ROVs, or remotely operated vehicles to see what happens beneath the surface. What do you think we'll discover next?

Let's explore the different roles aquatic animals play to keep their diverse underwater communities thriving.

**This activity is designed for families with children in grades 3-5.** Educators can see an overview of all activities and classroom recommendations at [sheddaquarium.org/files/fish-teachers-guide](https://sheddaquarium.org/files/fish-teachers-guide).

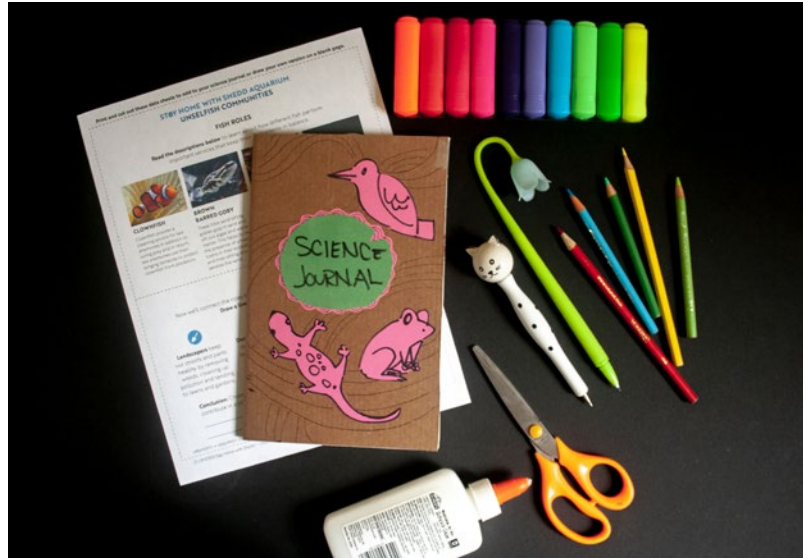


STAY HOME WITH SHEDD • FISH ACTIVITY

# UnselFish Communities

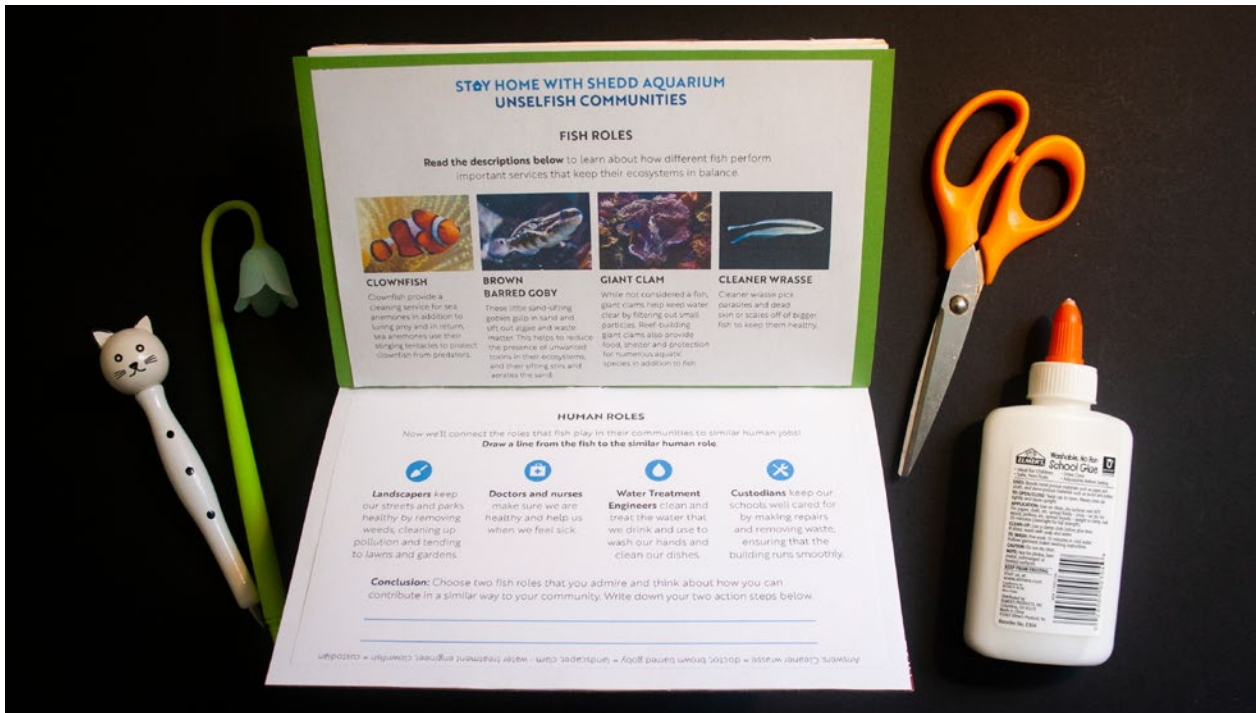
## MATERIALS

- **Science journal:** See instructions on how to make a science journal at [sheddaquarium.org/files/science-journal](http://sheddaquarium.org/files/science-journal) or make your own notes on a piece of paper
- **Writing and coloring devices:** pencil, pen, markers, paints, crayons, or colored pencils
- **Activity sheets:** Draw your own, or print out the sheets on page 5.



## INSTRUCTIONS PART 1/3

**Step 1 • Science journal:** Print out the Fish Roles and Human Roles activity sheets on page 5 and glue them into your science journal, or copy down your answers by hand as we go along.





# UnselFish Communities

## INSTRUCTIONS PART 2/3

**Step 2 • Science journal:** On the Fish Roles activity sheet, read the descriptions under the photos to learn about how different fish perform important services that keep their ecosystems in balance.

*Do any of these functions sound familiar or remind you of a job or role you've heard of in your own community?*



**Step 3 • Science journal:** Now we'll connect the roles that fish play in their communities to similar human jobs! Review the human roles in the Human Roles activity sheet— they should seem similar to the services fish provide in underwater communities. If you printed the activity sheet, draw a line from the fish to the similar human role. If you were unable to print the activity sheet, jot down notes in your science journal or on a blank sheet of paper comparing the fish roles to the human work.

## STAY HOME WITH SHEDD AQUARIUM UNSELFISH COMMUNITIES

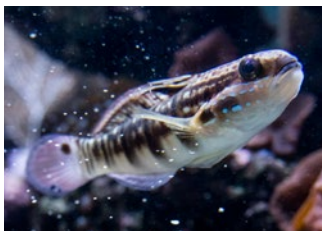
### FISH ROLES

Read the descriptions below to learn about how different fish perform important services that keep their ecosystems in balance.



#### CLOWNFISH

Clownfish provide a cleaning service for sea anemones in addition to luring prey and in return, sea anemones use their stinging tentacles to protect clownfish from predators.



#### WHITE BAR GOBY

These little sand-sifting gobies gulp in sand and sift out algae and waste matter. This helps to reduce the presence of unwanted toxins in their ecosystems, and their sifting stirs and aerates the sand.



#### GIANT CLAM

While not considered a fish, giant clams help keep water clear by filtering out small particles. Reef-building giant clams also provide food, shelter and protection for numerous aquatic species in addition to fish.



#### CLEANER WRASSE

Cleaner wrasse pick parasites and dead skin or scales off of bigger fish to keep them healthy.

### HUMAN ROLES

Now we'll connect the roles that fish play in their communities to similar human jobs!

**Draw a line from the fish to the similar human role.**



**Landscapers** keep our streets and parks healthy by removing weeds, cleaning up pollution and tending to lawns and gardens.



**Doctors and nurses** make sure we are healthy and help us when we feel sick.



**Water Treatment Engineers** clean and treat the water that we use for drinking, handwashing and cleaning dishes.



**Custodians** keep our schools well cared for by making repairs and removing waste, ensuring that the building runs smoothly.

**Conclusion:** Choose two fish roles that you admire and think about how you can contribute in a similar way to your community. Write down your two action steps below.

---



---

Answers: Cleaner wrasse = custodian, clownfish = landscaper, clam = water treatment engineer, white bar goby = doctor, clownfish = doctor, clownfish = doctor, clownfish = doctor



# UnselFish Communities

## INSTRUCTIONS PART 3/3

**Step 4 • Science journal:** Now let's think about how you can be a great community member, just like a fish! Choose two fish roles that you admire and think about how you can contribute in a similar way to your community.

- *How could you be like a clam and help to provide habitats for local animals?*
- *How could you be like a clownfish and keep your local environment or neighborhood tidy and clean?*

On your Human Roles activity sheet or a separate sheet of paper, write down two action steps you can take to help your community.

**Last Step:** Lastly, it's important to thank those who contribute to our communal health and wellbeing. Consider finding a way to thank the individuals who help your community.



- *Would your mail deliverer appreciate a hand-written thank-you note?*
- *Perhaps you could send a thank you note to the custodian of your school?*
- *What about drawing a picture to hang in your window thanking doctors and nurses for their hard work?*

### SHARE WITH US!

We'd love to see your thank-you item! Take a picture and share it with us **@SheddLearning** using **#StayHomeWithShedd**.

### TELL US ABOUT YOUR EXPERIENCE!

Your feedback helps us create new content for you and your family to enjoy from home. [surveyMonkey.com/r/StayHomeShedd](https://surveyMonkey.com/r/StayHomeShedd)