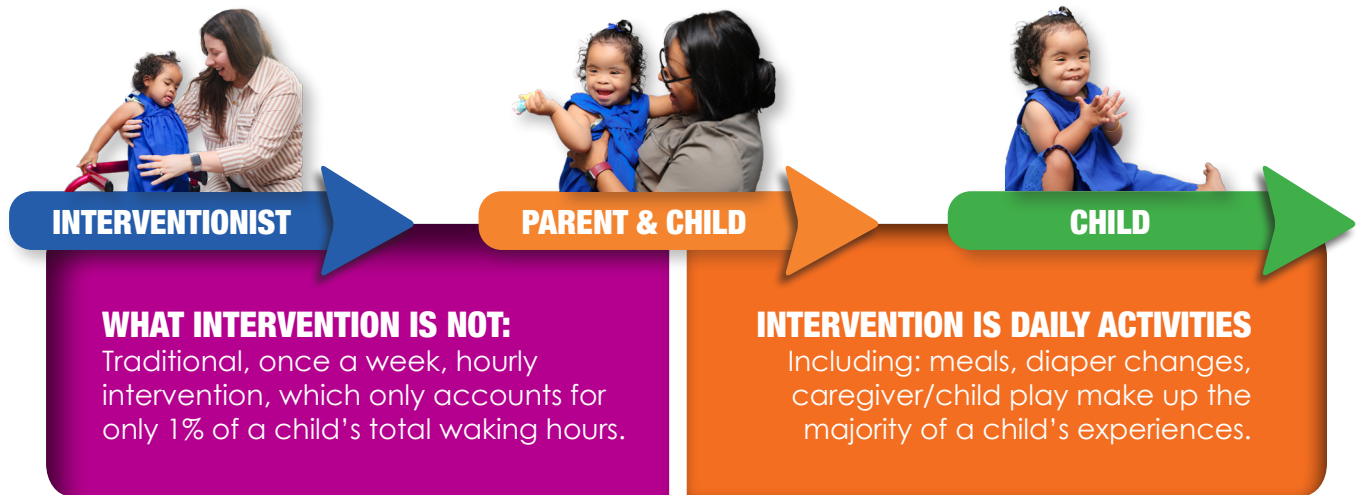


Intervention Happens **BETWEEN** Visits!

Early Intervention is the process of anticipating, identifying and addressing concerns about your child's development. The goal is to minimize potential challenges and maximize healthy development. While all infants and toddlers learn at their own pace, some may need extra support to develop certain skills.



Our PROCESS



REFERRAL

A parent/guardian or professional is concerned about an infant or toddler's development, and contacts Ohio Early Intervention to request a **FREE EVALUATION**.



EVALUATION & ASSESSMENT

Ohio Early Intervention conducts a comprehensive assessment of the child's development as well as the family's needs and concerns.



ELIGIBILITY DECISION

A child may be eligible for services based on medical diagnosis, assessment scores, or clinical opinion.



IFSP MEETING

If eligible, the family will meet with the EI team to create an individualized Family Service Plan (IFSP) his document contains the goals for that child } and family for the next year.

PERIODIC & ANNUAL IFSP REVIEW

The team follows the child's IFSP as needed throughout the year, at least every 6 months. The IFSP is updated each year at the annual review meeting.



SERVICE VISITS

The EI Team provides services as outlined in the IFSP, typically in the family's home or in a community setting.



TRANSITION

As the child approaches their third birthday, the family and EI team will prepare for the transition to preschool and/or other community-based services.