



Come
Grow
With Us



Who We Are

We are a family. It is our genuine people who love to build that drives our success in concrete construction. Delivering for our clients, learning from each other, and having fun along the way is the foundation of our culture. Our work together has led to growth from Ohio to offices in North Carolina, South Carolina, and Virginia. But, equally as important, it has resulted in growth and development for each of our staff.

We are builders first, providing cast-in-place concrete services on projects ranging from 5,000 to 50,000 cy's in size. Whether it is our preconstruction team 3D modeling and planning logistics in Google Earth or our operations group laser scanning, placing concrete, operating heavy equipment, and flying drones, we are transforming ideas into reality. **Having completed all types of projects from a 32-story hotel to a 1.5 million square foot distribution center, we embrace driving results on the front line.** At the end of the day, we take pride doing our work safely. It's part of our culture – to operate incident free.

1941



In Cleveland, Ohio, we were founded as concrete formwork contractors by Phil, Don, and Bill Donley. We've been at it for over **80 years**, with continual growth since our beginnings.



#1

How we rank safety, our very top priority.



Ranked in the Top 25

Specialty Concrete Contractors by ENR annually in the country. That's not just hard work; that's a commitment to excellence and dynamic learning in everything we do.

10 yrs.

The average tenure at Donley's. That means that the **people who join us stay**: job satisfaction, alongside a hardworking team that laughs together and trusts each other every day.



We pour concrete in seven states: **NC, OH, PA, SC, GA, VA & FL.** Our work, geographic reach, and team are growing.

27



Number of families in Donley's with **2nd-or 3rd-generation employees.** We value people and what each staff member can contribute to our success.

Succeed at Donley's

Beginning your career at Donley's unlocks doors and opens endless growth opportunities with genuine people.

We learn together.

Our superintendent, project management, preconstruction, and field engineering teams gather quarterly for training summits to share best practices and lessons learned, eat some BBQ and play some cornhole.



Intern/Co-Op Program

Week 1:
Introduction/Safety Basics
Donley's, Concrete,
and OSHA 10 certification



Weeks 2-6:
Work with Crews
Responsibilities
and Relationships



Weeks 7 & 8:
Drawings and Coordination
Drawings, PlanGrid, RFI's
and Submittals



Weeks 9 & 10:
Engineering
Layout, Laser Scanning,
Detailing/Modeling
Total Machine/Data
Collector, and As-Builts



Weeks 11, 12 & 13:
Quality Control and Managing Crews
Field installation Inspection, Quality Audits,
Assist the Superintendent,
Foreman and PM
"Lead" foremen's meetings,
and Crew Management



Week 14: Final Presentation



Project Engineer Development

Our project engineer development program offers new staff the opportunity to explore every facet of project delivery over a two-year period.

Phase 1 Field Training (2 to 3 months)

Safety, Crew Management, Field Engineering

Phase 2 Estimating, Modeling & Drones (4 to 6 months)

Preconstruction and Technology

Phase 3 Field Supervision Training (12 to 18 months)

Assisting Superintendent, Quality Control, Assisting Project Management, Leadership

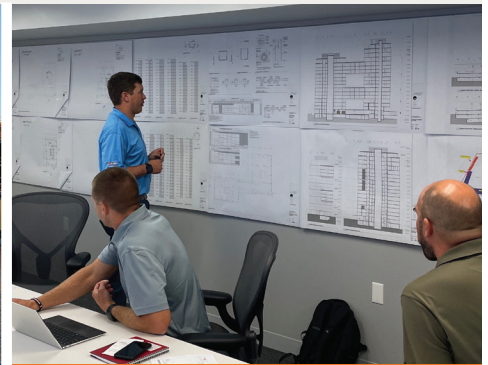
CAREER PATHS THROUGHOUT THE ENTIRE ORGANIZATION



Project Management



Superintendent/ Field Manager



Preconstruction



Virtual Design Coordination



Field Engineering



Safety

Come Grow With Us



GROW WITH US

OHIO + PENNSYLVANIA

5430 Warner Road
Cleveland, Ohio 44125
216.524.6800

SOUTHEAST

880 Lufkin Road
Apex, NC 27539
919.833.9088

2209 Mechanic Street
Charleston, SC 29405
843.203.9050

MID-ATLANTIC

7309 Capehart Road
Richmond, VA 23294
804.560.7820



donleyinc.com