

ABOUT US

Direct Recruiters, Inc. is an award-winning, nationally ranked search firm with a proven track record of success, recognized for over 20 national awards. We partner with clients to help them strategically build high-performing teams from the C-Suite through the individual contributor level across each area of the organization.

OVER 600+ PLACEMENTS IN THE LAST ~24 MONTHS

ACROSS ALL FUNCTIONS:

- | | | |
|--------------|-----------------|-----------------------|
| Sales | Marketing | Product & Engineering |
| Finance & HR | Client Services | Operations |

ACROSS ALL LEVELS:

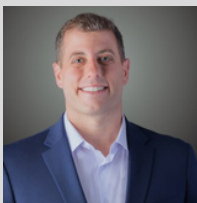
- | | | |
|-------------------------------|------------------------------|--------------------------------|
| (1) Chief Clinical Officer | (6) Chief Financial Officers | (25) EVPs/SVPs/GMs |
| (1) Chief Marketing Officer | (2) Chief Operating Officers | (80) VPs |
| (3) Chief Commercial Officers | (13) Chief Revenue Officers | (36) AVPs/RVPs |
| (2) Chief Technology Officers | (2) Chief Growth Officers | (82) Directors |
| (2) Chief Medical Officers | (2) Chief People Officers | (350+) Individual Contributors |
| | (2) Presidents | |

Norm and the entire DRI team are fantastic recruiters. Norm and his team listen, they get to know your company, they challenge your assumptions, and he has an excellent network, great relationships, and his standards are very high. Norm has placed >10 people at Hinge Health, and these hires' performance are among the highest in our company. His hires have collectively added over \$50m in revenue to our company." - **Daniel Perez**, CEO & Co-Founder, **Hinge Health**

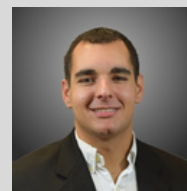
WHO TO KNOW:



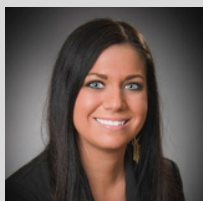
Norm Volsky
Managing Partner, Digital Health & Employer Technology Practice
Founder



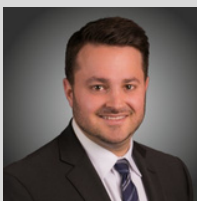
Mike Silverstein
Managing Partner, Healthcare Technology & Life Science Practice
Founder



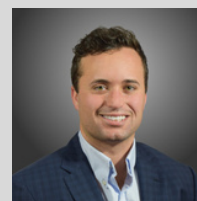
Mitch Herman
Managing Partner



Kasey Kaiser
Partner, Head of Operations and 12 Years' Executive Search Experience



Ben Shamis
Partner with Healthcare Consulting and CPA/Finance Experience



Trevor Yasinow
Partner

DRI CLIENTS AND PARTNERSHIPS

Direct Recruiters works with several Private Equity and Venture Capital firms and their portfolio of companies to recruit, acquire and retain leading talent in order to elevate the success of their organizations.

- 7 Wire Ventures
- Andreessen Horowitz
- Blue Heron Capital
- Capital Resource Partners
- Clearlake Capital
- Distributed Ventures
- Edison Partners
- Francisco Partners
- Frazier Healthcare Partners
- Frontier Partners
- Great Hill Partners
- Health Catalyst Capital
- Health Velocity Capital
- HLM Ventures
- JMI Equity
- Mainsail Partners
- New Mountain Capital
- Norwest Venture Partners
- Oak HC/FT
- Parthenon Capital
- Prolog Ventures
- Radian Capital
- SemperVirens
- Silversmith Capital
- Sopris Capital
- Sunstone Partners
- Symphony Ai
- TA Associates
- Transformation Capital
- Triple Tree Capital
- Warburg Pincus



Our team is dedicated to acquiring and retaining top performing professionals to elevate the success of our clients' organizations. We provide staffing, recruiting, and executive search options for healthcare technology and services companies focused in the following areas:

- Anxiety Management
- Benefits Administration
- Benefits Technology
- Business Intelligence
- Care Management
- Chronic Disease Management
- Clinical Decision Support
- COPD Management
- Digital Therapeutics
- Developmental Disabilities
- RPM (Remote Patient Monitoring)
- Mobile Wellness Platforms
- Diabetes Prevention
- Diabetes Management
- Genomics
- HR Technology
- Medicare
- Mental Health
- Mobile Charge Capture
- Digestive Health
- Patient Engagement
- Patient Referral Management
- Predictive Analytics
- SDoH
- Secure Texting
- Smoking Cessation
- Telehealth
- Vital Sign Monitoring
- Wellness
- Analytics
- Asthma Management
- Benefits Spend Analytics
- Blood Pressure Monitoring
- Care Coordination
- Management Consulting
- Care Navigation
- Chronic Care Management
- Concierge Medicine
- Depression Management
- Diabetes Management
- Health Applications
- Home Health
- Heart Monitoring
- Medicaid
- Medication Adherence
- Predictive Analytics
- MSK
- Patient Education
- Member Engagement
- Patient Identification
- Population Health Management
- Price Transparency
- Resiliency
- Second Opinions
- Sleep Monitoring
- Stress Management
- Telemedicine
- Weight Loss
- Fertility/Family Benefits
- Obesity Management