



Allora  CRYPTON

Stain resistant | Bleach cleanable | Antibacterial

 CORTINA
LEATHERS

Allora

Protected by
CRYPTON

Stain resistant | Bleach cleanable | Antibacterial



Allora's stunning hues, created in collaboration with textile designer Virginia Langley, were inspired by the unique sun-touched colors of Tuscany. Cortina's leather experts worked with Italian artisans to bring this color inspiration to life in Allora—a cleanable line of leather with uncompromising beauty and performance. Embracing the natural characteristics of leather, Allora's aniline finish (no pigments) presents with a smooth texture, pleasing hand, and a modern look that will not distress or patina over time. Coupled with our protective Crypton® top coat, which brings unexpected cleanability and stain and wear resistance, Allora offers designers a sustainable, versatile and daring choice, suitable for interiors everywhere.

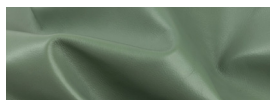
Environmental Stewardship: Allora is produced in a tannery which has achieved a silver rating as audited to the Leather Working Group environmental stewardship and traceability standards. Further enhancing its sustainability profile, Allora is finished without the use of solvents or lead, emits low VOCs, and has achieved an Indoor Advantage Gold certificate from SCS.

Technical Specifications

Origin	Italy
Raw Material	Full grain, European bulls
Leather Type	Aniline, protected by Crypton®
Hide Size	50 – 55 sq.ft.
Thickness	1.0 – 1.2 mm
Abrasion Resistance	ASTM D7255: CS10 Wheel Taber 500 cycles/500 gram weight
Light Fastness	ISO 105-B02: Blue Wool Scale ≥ 4
Wet Crocking	ASTM D5053: Class 4
Stain Repellency	AATCC 22-2005: Rating 100, ISO 4 (Highest)
Tensile Strength	ISO 3376: Breaking force 286N, Elongation at break 45%
Antibacterial	AATCC 100: 99.9% Reduction of Bacteria – AATCC 4352 Klebsiella Pneumoniae and AATCC 6538 Staphylococcus Aureus
Stain Release	AATCC 130-2000: 5 Rating (Excellent) for Coffee, Wine, Ketchup, Hair Products, Sunscreen, Betadine and Body Fluids; Withstands a 5% bleach solution
Flame Resistance	NFPA 260: Class 1; CAL TB117-2013
Performance Category	2
Cleaning Code	5



Available Colors (more on next page)



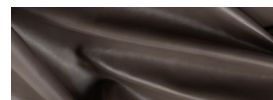
VLCY-30 Jade Garden



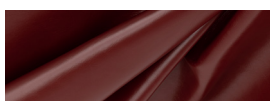
VLCY-31 Phantom Grey



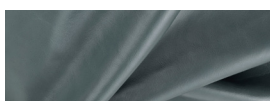
VLCY-32 Essence



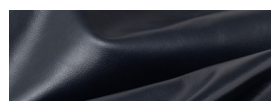
VLCY-33 Zanzibar



VLCY-34 Roasted Mulberry



VLCY-35 Ocean Mist



VLCY-36 Sapphire Night



VLCY-37 Toasted Caramel

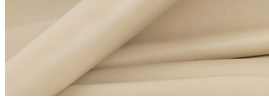


cortinaleathers.com

Available Colors (continued)



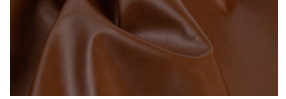
VLCY-38 Harvest Vine



VLCY-39 Southern Alps



VLCY-40 Lotus Pond



VLCY-41 L'Americano



VLCY-42 Moon Walk

Performance Category 2

Leathers with Performance Category 2 retain their natural appearance while carrying additional protections against abrasion, staining and color fading. Aniline leathers with some protection and semi-anilines are found here. These leathers are suitable for a wide range of applications across a wide range of wear and stain risk, such as those found in commercial settings and dining areas. More information is available on our website at cortinaleathers.com/resources/performance/.

Care & Cleaning Code 5

Cortina Leathers with Crypton[®] provide the industry's greatest stain resistance and cleanability. Stains which can be easily removed include wine, coffee, sunscreen, hair gel, hair mousse, vinegar, blood, urine and most other stains from food and typical soiling. Should a spill occur, blot (pressing gently without rubbing) immediately using clean, dry sections of an absorbent cloth or paper towels. Should soiling remain or for a more thorough cleaning, Cortina Leathers Universal Cleaner High-Tech Wipes[®] or a solution of lukewarm water and a mild cleaner, such as Ivory[®] soap or Woolite[®], may be used. Dampen a clean white cloth and gently wipe the affected area using a circular motion. Rinse completely with clean sections of cloth which is damp with plain water until all cleaner is removed. Blot dry with paper towels or dry cloth and allow to completely air dry. Repeat the cleaning process as needed, allowing the leather to dry between applications. If necessary, Cortina's running-line Crypton protected leathers can be cleaned with cleaners containing up to a 5% bleach solution (Sodium Hypochlorite). However, most stains can be easily removed using just gentle soap and water or the readily available commercial and household cleaning products listed on our website.

Note: To ensure complete removal of any stain from Crypton-treated leathers, the cleaning process must be undertaken within 60 minutes of any spillage or staining occurring. Successful stain removal will become less possible over time, so always treat spills and stains immediately. Avoid the excessive application of cleaning products on seams or stitching. Visit cortinaleathers.com/resources/care-cleaning/ for more information.

Warranty

Leathers with Performance Category 2 have a 1 year limited warranty against manufacturing defects. Leathers with Crypton protection also feature a 3 year warranty for stain resistance. See complete details at cortinaleathers.com/resources/warranty/.



CORTINA
LEATHERS

New York, New York
Conneaut, Ohio

samples@cortinaleathers.com

Office: 800-338-6229

cortinaleathers.com