



Cervino

Visualize | Realize | The leather you imagine, and more.

 **CORTINA**
LEATHERS

Cervino

Visualize | Realize | The leather you imagine, and more.

Cervino is an elegant, timeless aniline leather crafted in Italy by fourth generation artisans using uncompromising tanning techniques. This polished leather has a distinguished vintage look with a marbleized accent. It boasts the ability to appear antique and ageless, yet with a sturdy finish that prevents the surface from easily scratching or rubbing off. Finally, Cervino offers a pleasing drape, exuding timeless luxury and buttery softness.

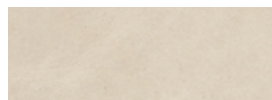
Environmental Stewardship: Cervino is lead free, emits low VOCs, and has achieved an Indoor Advantage Gold certificate from SCS.

Technical Specifications

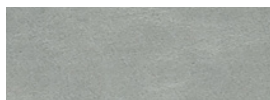
Origin	Italy
Raw Material	Top grain, European bovine
Leather Type	Aniline
Hide Size	50 – 55 sq.ft.
Thickness	1.0 – 1.2 mm
Abrasion Resistance	ASTM D7255: C510 Taber Wheel 500 Cycles/500 gram weight
Light Fastness	ISO 105-B02: Blue Wool Scale ≥ 3
Wet Crocking	ASTM D5053: Class 3
Flame Resistance	NFPA 260: Class 1; CAL TB117–2013
Performance Category	2
Cleaning Code	2



Available Colors



28-2 Piccione



28-3 Colombo



28-4 Fieno



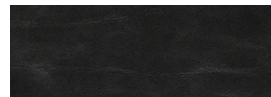
28-5 Camaro



28-6 Orangina



28-7 Fragola



28-8 Mascara



CORTINA
LEATHERS

New York, New York
Conneaut, Ohio

samples@cortinaleathers.com

Office: 800-338-6229

cortinaleathers.com

Continued on next page

Cervino

Performance Category 2

Leathers with Performance Category 2 retain their natural appearance while carrying additional protections against abrasion, staining and color fading. Aniline leathers with some protection and semi-anilines are found here. These leathers are suitable for a wide range of applications across a wide range of wear and stain risk, such as those found in commercial settings and dining areas. More information is available on our website at cortinaleathers.com/resources/performance/.

Care & Cleaning Code 2

Aniline leathers are designed to age gracefully, increasing in beauty over time. Very little care is required—general upkeep requires only an occasional dusting with a clean cloth. Never use oils, saddle soaps, harsh cleaners or cleaners containing abrasives on aniline leather. Periodically, you may wish to gently wipe the leather with a clean, slightly damp cloth to remove accumulated soil and allow it to air dry. Should a spill occur, remove immediately to avoid permanent discoloration by blotting (pressing gently without rubbing) with clean, dry sections of an absorbent cloth. Should soiling remain, a solution of lukewarm water and a mild soap such as Ivory® or a mild cleanser such as Woolite® may be used. Dampen a clean white cloth in the solution and gently wipe the affected area using a circular motion. Never apply the solution directly to the leather. Rinse completely with clean cloth which is damp with plain water until all cleaner is removed. Blot dry with a paper towels or dry cloth and allow to completely air dry. It may be necessary to repeat this procedure, allowing the leather to completely dry between applications. To avoid harming the leather, do not rub vigorously or for an extended period. It may not be possible to remove all stains from this natural product. More information is available on our website at cortinaleathers.com/resources/care-cleaning/.

Warranty

Leathers with Performance Category 2 have a 1 year limited warranty against manufacturing defects. See complete details at cortinaleathers.com/resources/warranty/.



CORTINA
LEATHERS

New York, New York
Conneaut, Ohio

samples@cortinaleathers.com

Office: 800-338-6229

cortinaleathers.com