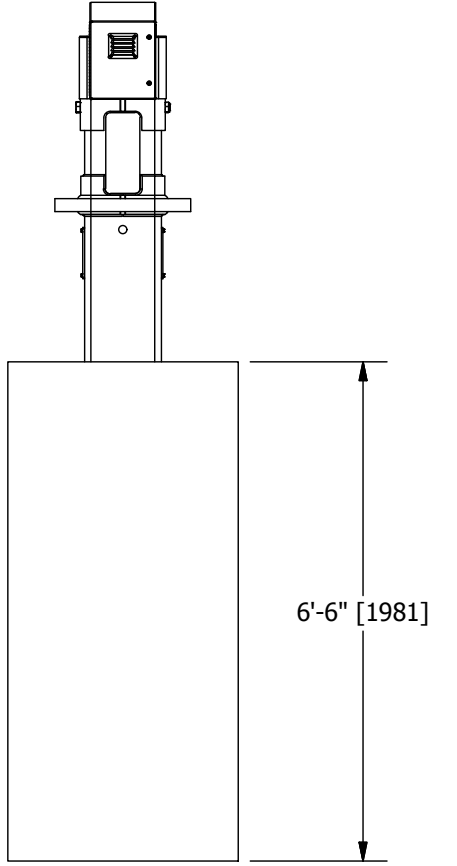
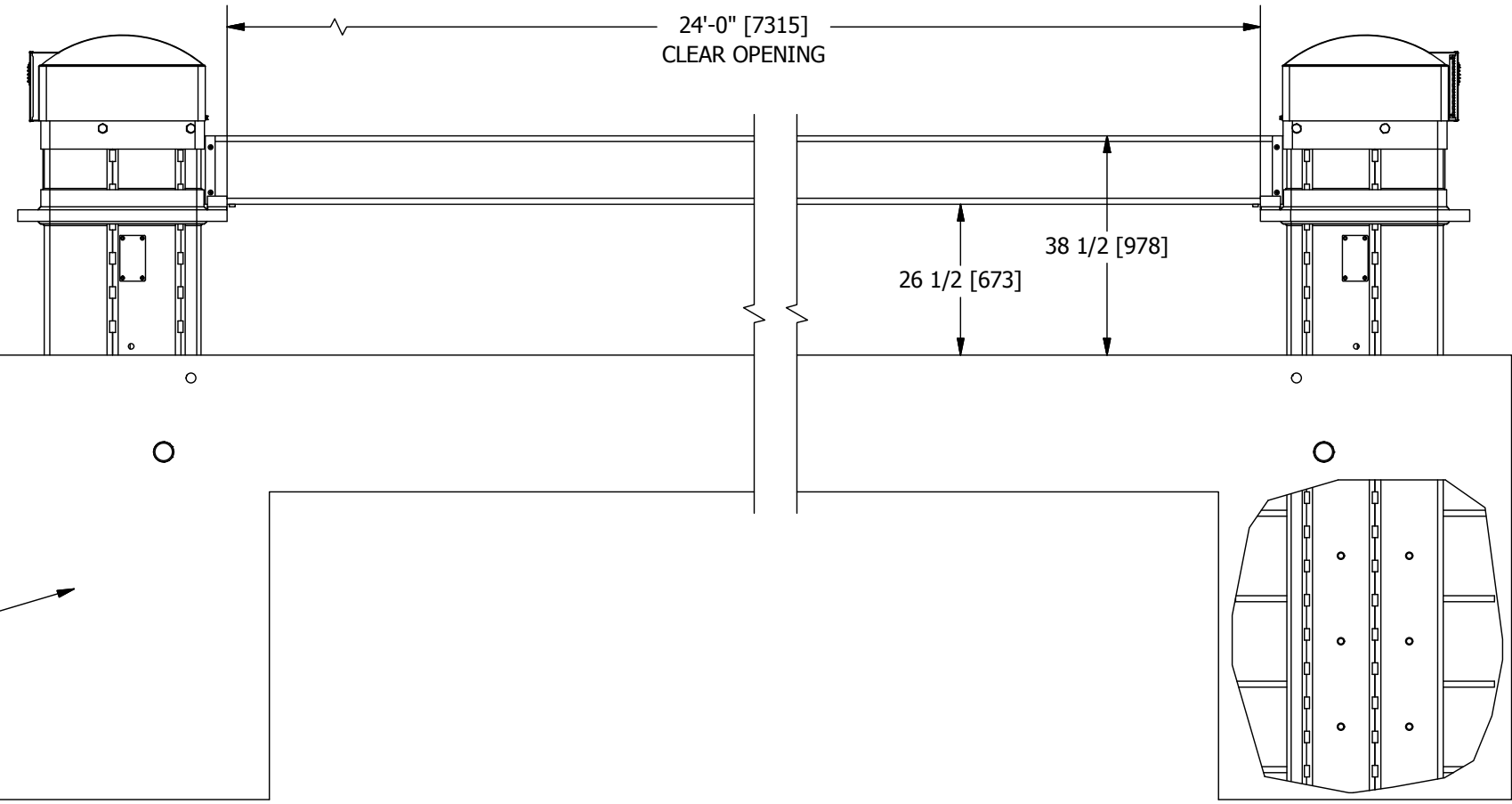
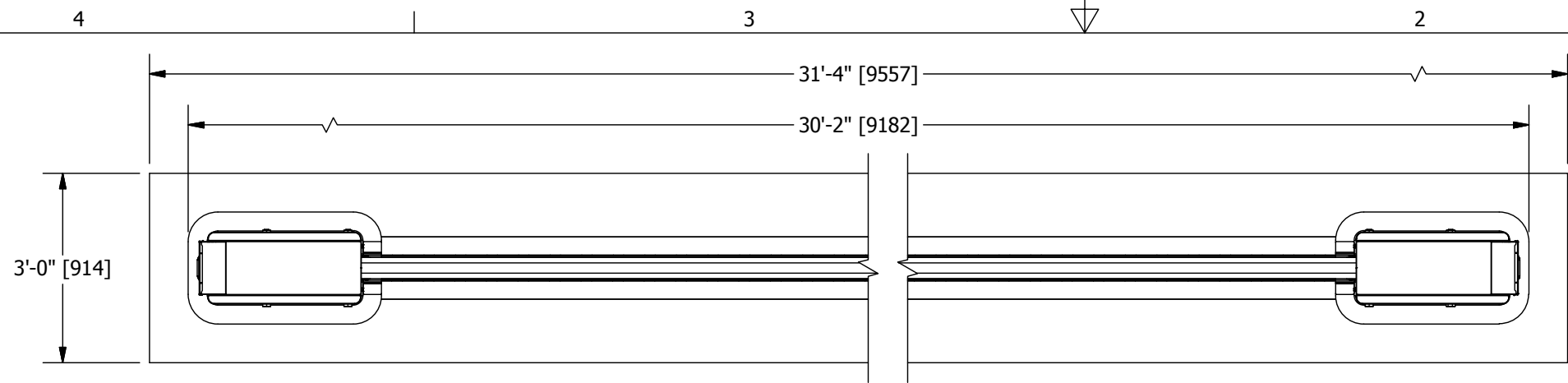


24FT CLEAR OPENING SHOWN

U.S. PAT. 9,410,298  
GCC PATENT APP. NO. GC 2016-32289

ITEM	QTY	PART NUMBER	DESCRIPTION
4	2	RSS-RTG-820	MOTOR COVER ASSEMBLY - 03
3	1	RSS-RTG-300-24	TROUGH WELDMENT - 24FT CLEAR OPENING
2	1	RSS-RTG-200-24	CRASH TUBE WELDMENT - 24FT CLEAR OPENING
1	2	RSS-RTG-100	END STRUCTURE WELDMENT

PARTS LIST			
DRAWN		TJM	7/2/2014
APPROVED			
			<b>ROSS TECHNOLOGY CORP.</b>
			LEOLA, PA USA
TOLERANCES	ANGULAR (DEG/MIN)	± 0'30'	
	LINEAR (FRAC)	± 1/16	
	LINEAR (DEC)	.x ± .13	
		.xx ± .06	
		.xxx ± .031	
		DESCRIPTION XT-4200-HB POST & BEAM GATE	
		CUSTOMER ROSS	
SIZE	WO#	DWG/PART NO	REV
B		RSS-RTG-000-24	G
SCALE	SHEET	1 OF 2	



3000 PSI CONCRETE

U.S. PAT. 9,410,298  
GCC PATENT APP. NO. GC 2016-32289

DRAWN TJM 7/2/2014		<b>ROSS TECHNOLOGY CORP.</b>		
APPROVED		LEOLA, PA USA		
TOLERANCES	ANGULAR (DEG/MIN)	± 0'30'	DESCRIPTION XT-4200-HB POST & BEAM GATE	
	LINEAR (FRAC)	± 1/16	CUSTOMER ROSS	
	LINEAR (DEC)	.x ± .13	SIZE B	WO#
		.xx ± .06	DWG/PART NO RSS-RTG-000-24	
	.xxx ± .031	REV G		
SCALE		SHEET 2 OF 2		