

Item	DESCRIPTION
1	Heald Mantis 80
2	Concrete Foundation 1800x1800x300

Sheet Name  
**Installation Detail**

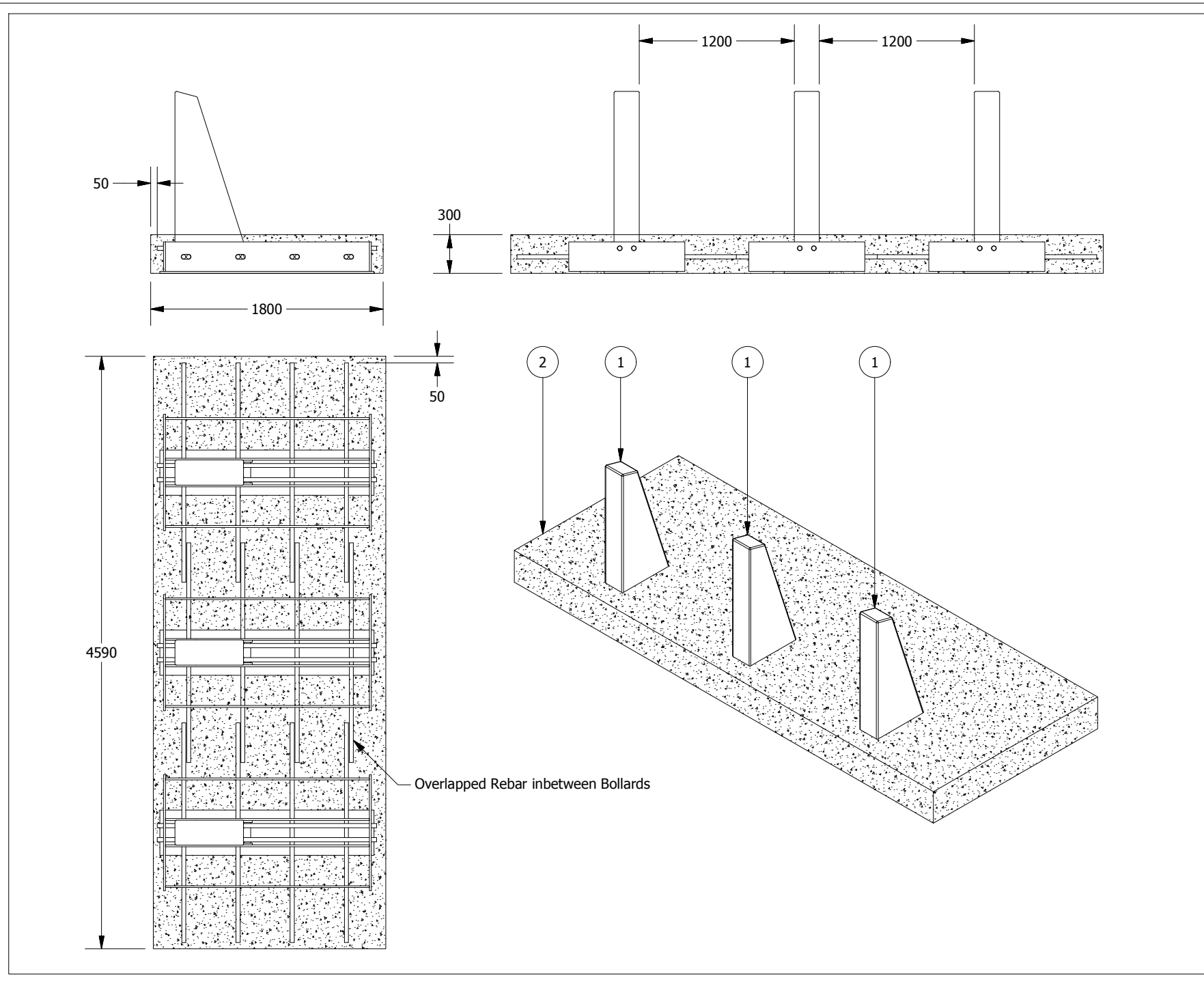
- ALL MATERIALS AND WORKMANSHIP TO BE IN ACCORDANCE WITH BS 8110 OR EQUIVALENT APPROPRIATE COUNTRY STANDARDS
- ALL CONCRETE TO BE IN ACCORDANCE WITH BS 8500 OR EQUIVALENT APPROPRIATE COUNTRY STANDARDS
- CONCRETE TO BE DESIGNATED MIX AS FOLLOWS :  
FOR 28 DAY CURE - C35  
FOR 6 DAY CURE - C50

Copyright © 2014 Heald Ltd. All Rights Reserved.  
THIS DOCUMENT IS COPYRIGHT OF HEALD LTD AND MAY NOT BE REPRODUCED IN PART OR IN WHOLE FOR ANY PURPOSE OTHER THAN FOR WHICH IT IS SUPPLIED WITHOUT THE WRITTEN PERMISSION OF HEALD LTD.

PLEASE NOTE REFER TO DATA SHEET(S) FOR FULL EQUIPMENT SPECIFICATION DETAILS.  
INFORMATION ON THIS DRAWING IS FOR GUIDANCE ONLY AND NOT SITE SPECIFIC.  
DIMENSIONS ARE IN MILLIMETRES



Title <b>Mantis 80 Installation</b>	
Drawn <b>C.McKinley</b>	
Approved <b>D.Heald</b>	
Date <b>11/04/2014</b>	Scale <b>NTS</b>
Dwg no.	Sheet <b>1 Of 1</b>



Item	DESCRIPTION
1	Heald Mantis 80
2	Concrete Foundation 4590x1800x300

Sheet Name  
**Installation Detail**

- ALL MATERIALS AND WORKMANSHIP TO BE IN ACCORDANCE WITH BS 8110 OR EQUIVALENT APPROPRIATE COUNTRY STANDARDS
- ALL CONCRETE TO BE IN ACCORDANCE WITH BS 8500 OR EQUIVALENT APPROPRIATE COUNTRY STANDARDS
- CONCRETE TO BE DESIGNATED MIX AS FOLLOWS :  
FOR 28 DAY CURE - C35  
FOR 6 DAY CURE - C50

Copyright © 2014 Heald Ltd. All Rights Reserved.  
THIS DOCUMENT IS COPYRIGHT OF HEALD LTD AND MAY NOT BE REPRODUCED IN PART OR IN WHOLE FOR ANY PURPOSE OTHER THAN FOR WHICH IT IS SUPPLIED WITHOUT THE WRITTEN PERMISSION OF HEALD LTD.

PLEASE NOTE REFER TO DATA SHEET(S) FOR FULL EQUIPMENT SPECIFICATION DETAILS.

INFORMATION ON THIS DRAWING IS FOR GUIDANCE ONLY AND NOT SITE SPECIFIC.

DIMENSIONS ARE IN MILLIMETRES



Title <b>3No. Mantis 80 Installation</b>	
Drawn <b>C.McKinley</b>	
Approved <b>D.Heald</b>	
Date <b>11/04/2014</b>	Scale <b>NTS</b>
Dwg no.	Sheet <b>1 Of 1</b>