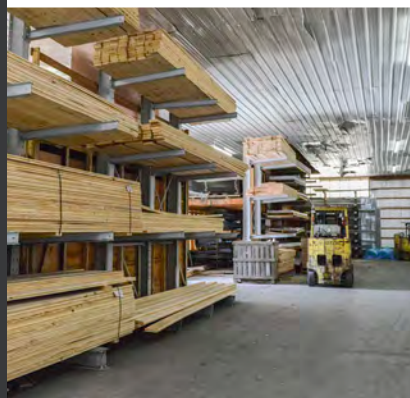


Dexco[®] Structural I-Beam Cantilever Racks

**Versatile, durable storage solutions for
materials of considerable length and mass**



Dexco Cantilever Rack Systems offer the strength, durability and layout to store products of practically any dimension or weight. They're particularly ideal for materials that are wide or bulky, and thus difficult to store on traditional pallet racks. And because we only use structural steel, our designs can easily accommodate numerous adjustable arms to maximize your floor space and can be engineered to handle virtually any load.



Dexco® Structural I-Beam Cantilever Racks

Design Overview

Dexco Cantilever Racks comprise single- or double-sided columns that support vertically adjustable arms. These arms are bolted securely to the columns and can be angled to retain loads. A horizontal base helps stabilize the structure and supports the bottom load. This type of storage system offers many advantages, including:

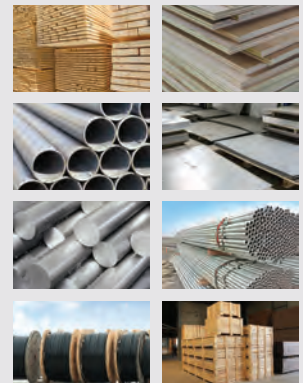
- **Flexibility:** The lack of front columns means no restrictions on the length of items stored. Different-length objects or oddly sized items can be placed within the same rack system
- **Accessibility:** Because there are no vertical obstructions at the face of the rack, loading and unloading product is quick and easy
- **Adjustability:** Bolted connections allow for easy adjustment of arms to accommodate a wide variety of load heights
- **Modularity:** Easy to add onto when needed
- **Efficiency:** Systems make good use of limited space and are cost-effective

Choose from standard designs or custom engineering. Standard designs offer the best value and shortest lead times.



Applications

- Lumber
- Plywood sheets
- Pipes and tubes
- Sheet metal
- Steel bars
- Conduit
- Cable spools
- Wooden crates



Standard Features

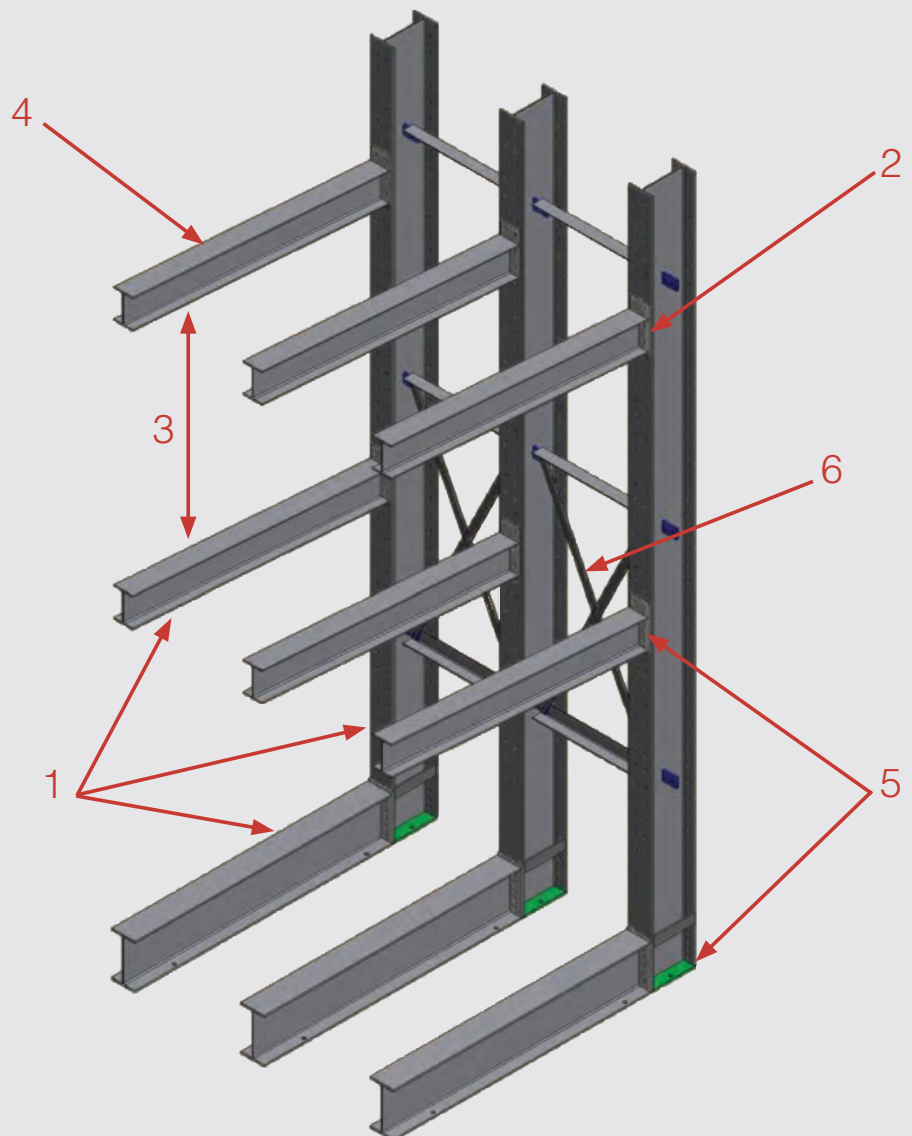
Dexco Rack Systems are engineered using American Institute of Steel Construction (AISC) standards, which were developed to guide the design of large steel structures such as bridges and buildings. The stringent nature of these standards, coupled with Ross's conservative approach to structural rack design, mean you can be confident that your people

and products are safe and secure. All rack arms and columns are manufactured using wide flange beams with a 50 KSI minimum yield, offering greater strength and durability compared to roll-formed steel. As a result, our racks better resist damage from material handling equipment and provide larger load capacity within a given space.

1. Structural I-beam construction
2. Adjustable, bolted shelf beams accommodate changing storage needs
3. Arms adjust in 4-inch increments
4. Arms slope at a 2-degree standard or 4-degree heavy up-tilt
5. Arms and bases attach to columns using A325 structural bolts or GR 5 plated structural hardware
6. Structural bolt-together brace systems offer lateral rigidity

Additional Features

- Modular design makes it easy to add more bays
- Columns and shelf beams are bundled for easy installation and cost-effective shipping
- Load capacities: Ross engineers racking systems to meet virtually any weight requirement. Typical systems support loads ranging from 1,000 pounds per individual arm up to 20,000 pounds per individual arm and higher



Optional Features

- Welded construction
- Arm adjustment in 3-inch increments
- Single- and double-sided systems
- Narrow-aisle configurations with guardrails for side-load forklifts
- Stop bars with sockets for bases
- Stop bars with sockets for arms - with and without chains, welded or bolted
- Welded or bolted arm stops - 2-inch and 4-inch available
- Vinyl arm caps

Powder Coat Color Options

Traffic Yellow RAL 1023	Traffic Orange RAL 2009	Signal Red RAL 3001	Cobalt Blue RAL 5013	Moss Green RAL 6005	Terra Brown RAL 8028	Ross Gray
						

Standard Finish

- Factory-applied powder-coated finish

Optional Finish

- Hot-dip galvanized coating

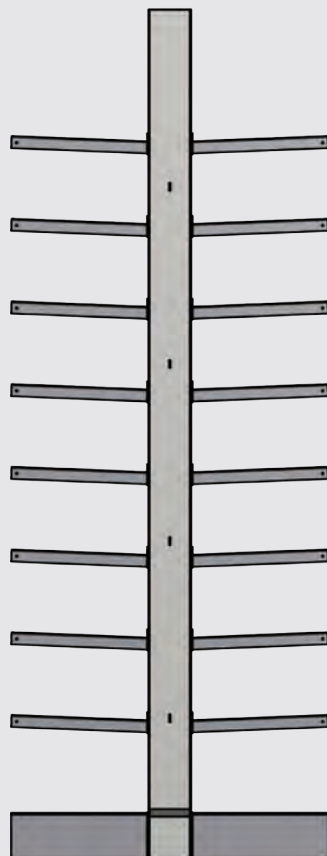


Low-Boy Style Arm

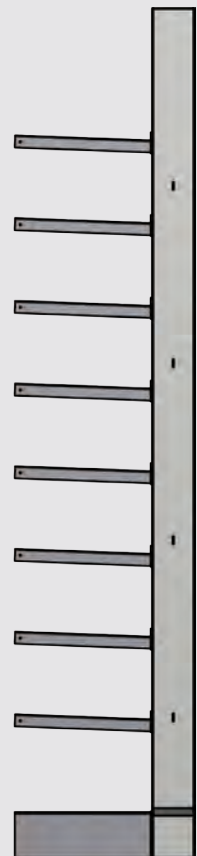
Optional Features



High-Boy Style Arm



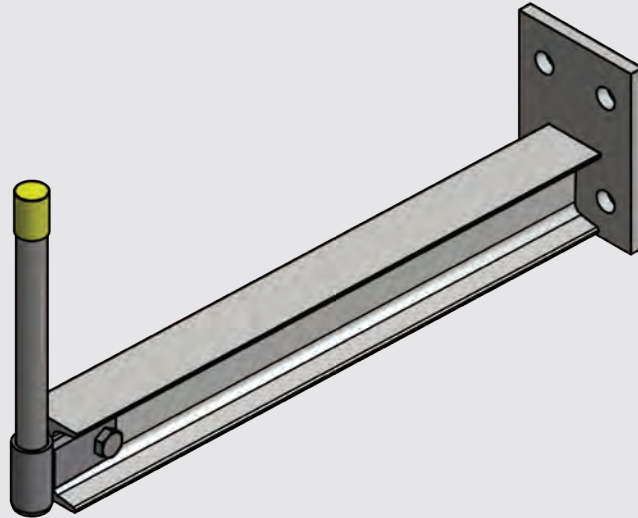
Double-Sided



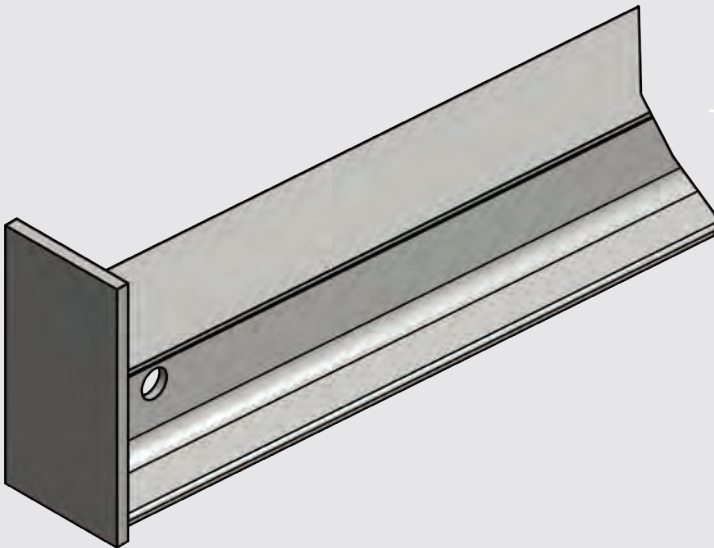
Single-Sided

Optional Features

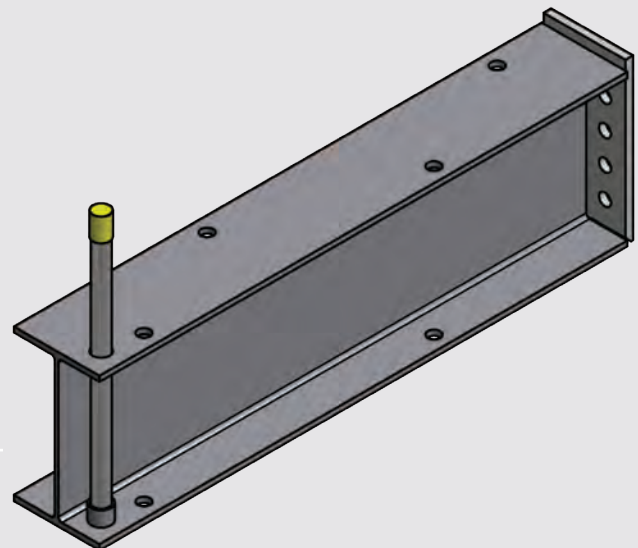
Stop Bar with Socket – Rack Arm



Arm Stop



Stop Bar with Socket – Rack Base



Technical Information

Applicable Standards, Testing & Certifications

- ANSI/AISC 360, Specification for Structural Steel Buildings
- AWS D1.1/D1.1M, Structural Welding Code – Steel
- ASTM A572, Standard Specification for High-Strength Low-Alloy Columbium-Vanadium Structural Steel
- ASTM A36, Standard Specification for Carbon Structural Steel
- ASTM A325, Standard Specification for Structural Bolts, Steel
- ASTM A992, Standard Specification for Structural Steel Shapes

Quality Control

ISO 9001:2015



Installation Considerations

Columns and arms are bundled to make installation simple and shipping cost-effective. Detailed installation manuals are provided for your installation crew.

Availability & Cost

Ross offers both standard and custom engineered rack designs for a wide range of weight and capacity requirements. Standard designs offer the best value and shortest lead times.

Warranty

Ross warrants that all of its manufactured products shall remain free of defects in material and workmanship under normal use for a period of one year from the date of delivery.

Maintenance

Semi-annual maintenance is recommended to

- 1) inspect structural components and welds for damage caused by overloading or forklift equipment;
- 2) tighten or replace missing bolts and anchors and;
- 3) confirm racks are plumb.

Technical Services

- Custom engineering and rack design
- Site specific drawings (available upon request with upcharge)

Product specifications and information may be downloaded at RossTechnology.com



**Ross offers a complete line
of structural steel racks**

- Dexco Cantilever Racks
- Dexco Coil Racks
- Dexco Tool & Die Racks
- Dexco Salvage Yard Racks
- Dexco Specialized Racks
- Dexco Shed Racks

dexco[®]
STRUCTURAL STEEL
I-BEAM RACKING SYSTEMS

Ross
104 North Maple Avenue
Leola, PA 17540-0646
US: 800-345-8170
International: +01(717)656-2200
Fax: 717-656-3281
Email: sales@rosstechnology.com
RossTechnology.com