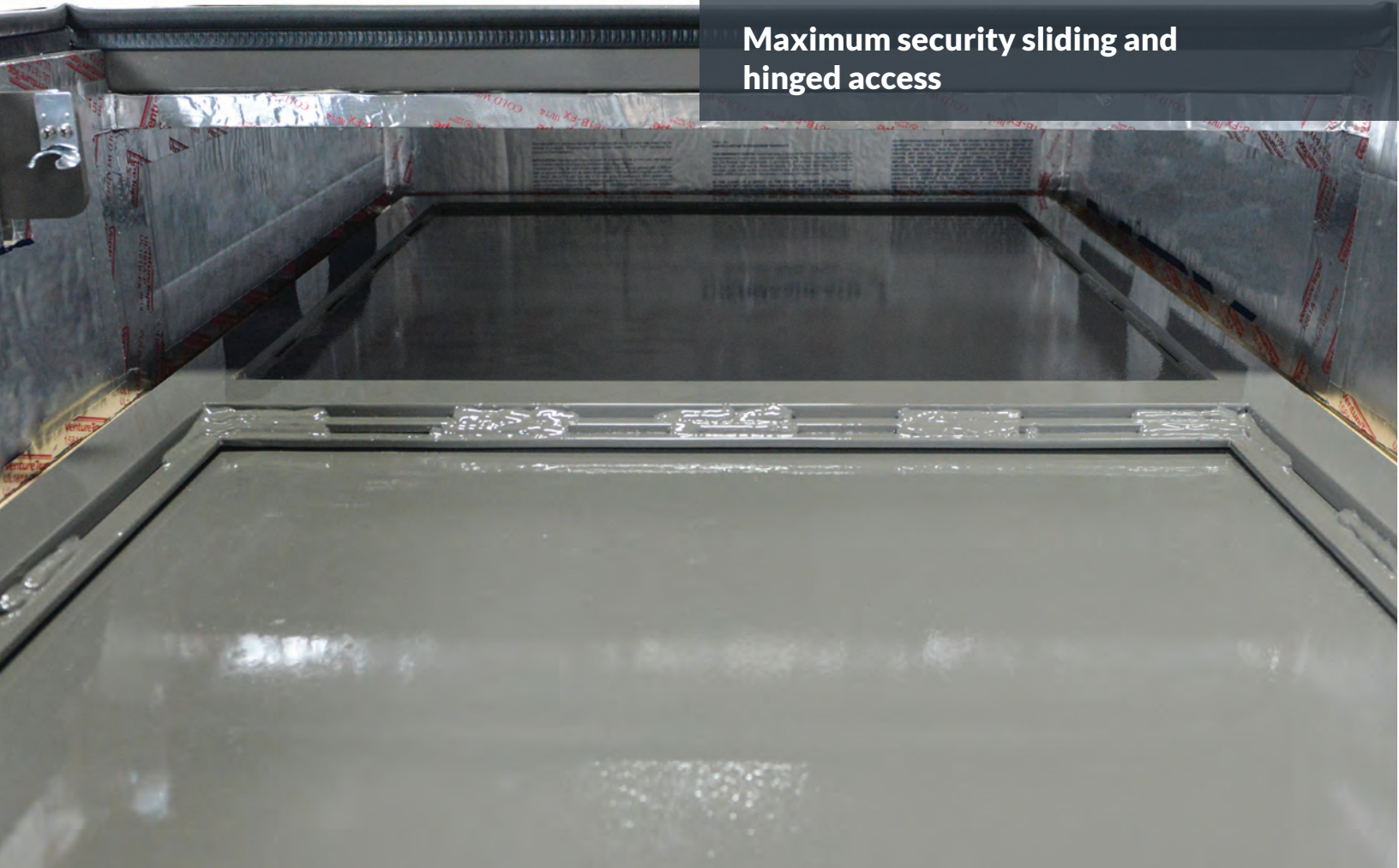
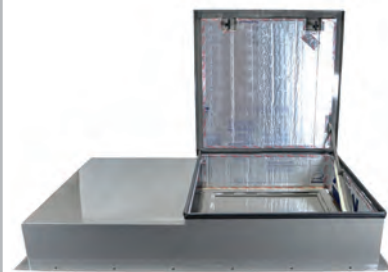


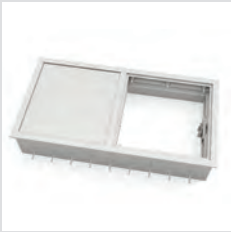
**Maximum security sliding and hinged access**



Ross' maximum security sliding and hinged hatches provide Department of State (DOS) certified protection against mob-level forced-entry attacks and rifle-level ballistic threats for emergency egress points in both roof and floor mounted applications. Heavy duty access hardware significantly reduces the amount of effort required for opening and closure.



# Roof & Escape Hatches



**Maximum Security Sliding Hatch – DOS 60 Minute** ..... pg.3  
**FE/BR**

DOS certified steel design tested to withstand 60 minutes of simulated "mob" attack and rifle-level ballistic rounds. Sliding hatch configuration requires minimal vertical clearance for operation.



**Maximum Security Hinged Hatch – DOS 60-Minuted** ..... pg.6  
**FE/BR**

DOS certified steel design tested to withstand 60 minutes of simulated "mob" attack and rifle-level ballistic rounds. Hinged hatch configuration maximizes clear opening space for egress.

## Industries

- Government
- Military
- Oil & Gas
- Critical Infrastructure
- Pharmaceutical
- Commercial
- Residential



## Applications

Ross Technology has manufactured escape hatches for many prominent and secure buildings. Maximum Security Sliding and Hinged Hatches provide secure roof and floor level evacuation for prominent and mission critical buildings, safe rooms, control rooms, executive offices and anywhere the highest level of protection is important. Our customers include some of the largest government agencies, general contractors, integrators and corporations in the world.

# MAXIMUM SECURITY SLIDING HATCH

## – DOS 60 MINUTE FE/BR

### Design Overview

Tested to Department of State Standard SD-STD-01.01 Rev. G (Amended), Ross Maximum Security Sliding Hatches offer the utmost in DOS certified ballistic and forced-entry resistance for extreme threat conditions while providing a covert escape route for personnel. Designed to operate easily and efficiently within limited space, they are extremely versatile for a multitude of applications. The sliding hatch requires minimal vertical clearance for opening and is certified to withstand simulated “mob” attacks for 60 minutes and 5.56 M193, 5.56 M855 and 7.62 M80 ballistic rounds.

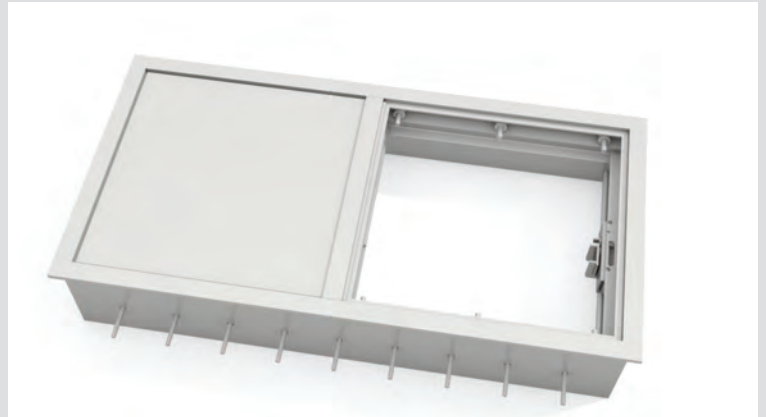
An optional weather cover is available for optimal resistance to the elements in outdoor applications. Fabricated as a complete system, typical construction includes a structural steel hatch frame with one fixed and one sliding panel and a plate or tube-type sub-frame.

Ross Maximum Security Sliding Hatches offer architects and end users:

- **Anti-Terrorism Level Security** – where conformance to U.S. Department of State forced-entry / ballistic resistant threat levels is required
- **Emergency Egress** – where evacuation of personnel may become necessary
- **Optimal Use of Space** – requires minimal footprint and overhead clearance
- **Design Flexibility** – numerous finish options offer the ability to complement other building materials
- **Durability** – structural steel materials and high-quality finishes provide extreme durability and low maintenance throughout the life cycle

In addition to engineering the full hatch and sub-frame system, Ross has the unique ability to customize styles and finishes, providing

architects and engineers with a wide range of flexibility in creating or preserving the aesthetics of new and existing structures.



### Standard Features

- Perimeter T-frame with steel plate panels
- Pre-drilled and tapped sub-frame in one of three styles 1) embed plate with studs for newly poured concrete walls 2) tubing with chemical or mechanical anchors for existing masonry walls 3) tubing for welding to steel walls
- Handle
- Heavy duty rollers
- Single point latch

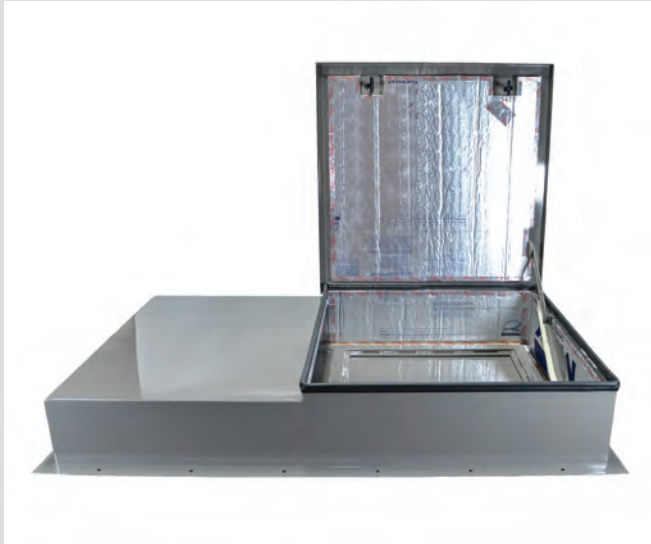
### Standard Finish

- Epoxy primer

### Optional Features

- Access ladder
- Weather cover
- Safety post

## Optional Features



### Optional Finish

- Epoxy primer with finish top coat. Contact Ross for color chart

## Technical Data

### Applicable Standards, Testing & Certifications

Department of State, SD-STD-01.01 Rev. G (Amended): Certification Standard – Forced Entry and Ballistic Resistance of Structural Systems.

### Installation Considerations

- Hatches are fully assembled at the factory, and require only minimal preparation prior to installation
- Sub-frames can be shipped in advance of sliding hatch assembly
- Three different methods of installation are available depending on the stage and type of construction:
  - o Pre-drilled and tapped plate-type embeds cast into concrete

- o Pre-drilled and tapped steel tube-type sub-frames bolted into the roof structure or curbing
- o Pre-drilled and tapped steel tube-type sub-frames welded to the roof structure

### Maintenance

Regular inspection of hatch operation, cover and flashing is recommended.

### Quality Control

Manufacturing facility certified to ISO 9001:2015.

### Availability & Cost

Hatches are typically manufactured to order and subject to production lead times at the time of purchase.

### Warranty

Ross warrants that its Architectural Security products shall remain free of defects in material and workmanship under normal use for a period determined by the individual project specification.

## Model Information

Ross Model Series	EH1-2133
Hatch and Frame Construction	Steel, Sliding Panel
Frame Depth	11.25" (286 mm)
Frame Profile	T-shape. Does not require secondary ballistic stop bars
Frame Size	30" (762 mm) x 59" (1499 mm)
Clear Opening Size	26.5" (673 mm) x 26.75" (679 mm)
Mounting Technique	M12 bolts
Ballistic Resistance	5.56 M193, 5.56 M855, 7.62 M80 Per DOS SD-STD-01.01 Rev G (Amended)
Forced Entry Resistance	60 minutes Per DOS SD-STD-01.01 Rev G (Amended)
DOS Code	2133

# MAXIMUM SECURITY HINGED HATCH – DOS 60 MINUTE FE/BR

## Design Overview

Certified to Department of State Standard SD-STD-01.01 Rev. G (Amended), Ross Maximum Security Hinged Hatches offer the utmost in DOS certified ballistic and forced-entry resistance for extreme threat conditions while providing a covert escape route for personnel. Designed to maximize the clear opening space within a given area, they offer the greatest amount of room for evacuating personnel and property. The hinged hatch is certified to withstand simulated forced-entry attacks for 60 minutes and 5.56 M193, 5.56 M855 and 7.62 M80 ballistic rounds.

Fabricated as a complete system, typical construction includes a structural steel hatch frame with hinged panel and a plate or tube-type sub-frame.

Ross Maximum Security Hinged Hatches offer architects and end users:

- **Anti-Terrorism Level Security** – where conformance to U.S. Department of State forced-entry / ballistic resistant threat levels is required
- **Emergency Egress** – where evacuation of personnel may become necessary



- **Large Opening Sizes** – up to 42" x 36" clear opening accommodates most any access requirement
- **Design Flexibility** – numerous finish options offer the ability to complement other building materials
- **Durability** – structural steel materials and high-quality finishes provide extreme durability and low maintenance throughout the life cycle

In addition to engineering the full hatch and sub-frame system, Ross has the unique ability to customize styles and finishes, providing architects and engineers with a wide range of flexibility in creating or preserving the aesthetics of new and existing structures.

## Standard Features

- Perimeter T-frame with hinged steel panel
- Pre-drilled and tapped sub-frame in one of three styles 1) embed plate with studs for newly poured concrete walls 2) tubing with chemical or mechanical anchors for existing masonry walls 3) tubing for welding to steel walls
- Handle
- Gas strut assist
- Multiple locks, manually thrown

## Standard Finish

- Epoxy primer

## Optional Features

### Optional Features

- Access ladder
- Weather cover
- Safety post

### Optional Finish

- Epoxy primer with finish top coat. Contact Ross for color chart



## Technical Data

### Applicable Standards, Testing & Certifications

Department of State, SD-STD-01.01 Rev. G (Amended): Certification Standard – Forced Entry and Ballistic Resistance of Structural Systems.

### Installation Considerations

- Hatches are fully assembled at the factory, and require only minimal preparation prior to installation
- Sub-frames can be shipped in advance of hinged hatch assembly
- Three different methods of installation are available depending on the stage and type of construction:
  - o Pre-drilled and tapped plate-type embeds cast into concrete
  - o Pre-drilled and tapped steel tube-type sub-frames bolted into the roof structure or curbing
  - o Pre-drilled and tapped steel tube-type sub-frames welded to the roof structure

### Maintenance

Regular inspection of hatch operation, cover and flashing is recommended. See maintenance manual for details.

### Quality Control

Manufacturing facility certified to ISO 9001:2015.

### Availability & Cost

Hatches are typically manufactured to order and subject to production lead times at the time of purchase. Contact Ross for details.

### Warranty

Ross warrants that its Architectural Security products shall remain free of defects in material and workmanship under normal use for a period determined by the individual project specification.

### Model Information

Ross Model Series	<b>EH2-2133</b>
Hatch and Frame Construction	Steel, Hinged Panel
Frame Depth	5.25" (133 mm)
Frame Profile	T-shape. Does not require secondary ballistic stop bars
Frame Size	48.0" (1219 mm) x 44.9" (1141 mm)
Clear Opening Size	42" (1067 mm) x 36" (914 mm)
Mounting Technique	M12 bolts
Ballistic Resistance	5.56 M193, 5.56 M855, 7.62 M80 Per DOS SD-STD-01.01 Rev G (Amended)
Forced Entry Resistance	60 minutes Per DOS SD-STD-01.01 Rev G (Amended)
DOS Code	2133



**Ross offers a complete line  
of Architectural Security  
Products**

- Windows & Deal Trays
- Doors
- Louvers
- Roof/Escape Hatches



**ARCHITECTURAL  
SECURITY**

*Forced-Entry, Ballistic &  
Blast-Resistant Products*

Ross Technology Corporation

104 North Maple Avenue

Leola, PA 17540-0646

US: 800-345-8170

International: +01(717)656-2200

Fax: 717-656-3281

Email: [sales@rosstechnology.com](mailto:sales@rosstechnology.com)

[RossTechnology.com](http://RossTechnology.com)