

Sika Sarnafil

World Class Roofing and Waterproofing

ROOFING TECHNICAL BULLETIN

#03-12

To: Authorized Roofing Applicators
Sika Sarnafil Sales Staff & Sales Representatives
Sika Sarnafil Regional Technical Staff
Sika Sarnafil Customer Service Staff
Sika Sarnafil Services Staff
Roofing Consultants

From: Technical Service Department

Date: July 12, 2012

Subject: Rhinobond Angle Change Securement

Rhinobond PVC coated plates and XP fasteners can now be used for angle change securement in place of standard base nailing details. By installing the fastener and plate into the substrate 3 1/2 inches away from the wall or angle change, the Rhinobond welder can then be centered over the Rhinobond plate for a complete weld.

By using Rhinobond plates for membrane securement at an angle change, the field sheet can then be run continuously up a wall eliminating a welded seam at the base of the wall.

Spacing of the Rhinobond fasteners is 12 inches on center.

Sarnacol adhesive (2170 or 2170 VC) is required on the substrate between the Rhinobond plate and the wall as well as up the wall achieving 100% adhesion. Adhesion between the wall and the plate is important to prevent bridging.

This detail is for use on Rhinobond systems only.

This detail is not for use with Rhinobond plates fastened vertically into a wall.

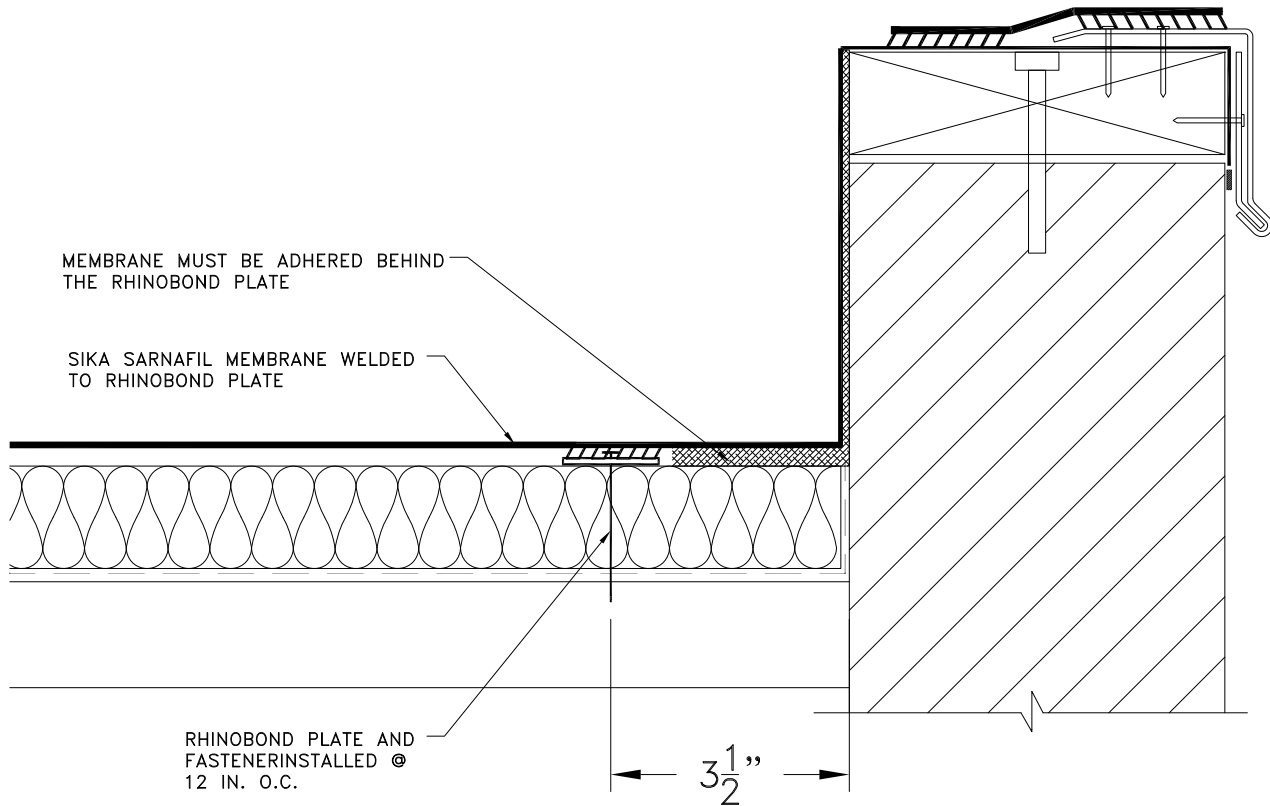
This detail is not approved for warranty terms over 20 yrs.

Please contact Sika Sarnafil's Technical department with any questions.



Sika Sarnafil, A Division of Sika Corporation, 100 Dan Road, Canton, MA 02021
Tel. 800-451-2504, Fax: 781-828-5365, www.sikacorp.com

Sarnafil®



NOTE: DO NOT INSTALL RHINO BOND PLATES TIGHT AGAINST WALL. THE RHINO BOND WELDER IS 7 IN. WIDE AND MUST BE CENTERED OVER THE RHINO BOND PLATE FOR PROPER WELDING.

RHINO BOND ANGLE CHANGE SECUREMENT



Sarnafil
781-828-5400 sikacorp.com

JOB NAME:

RHINO BOND

SCALE: N.T.S.

DATE: 6/12

FILE NO.: RB-2-1

DRW. NO.:

AS A MEMBRANE MANUFACTURER, SIKA SARNAFIL, A DIVISION OF SIKA CORPORATION REVIEWS DETAILS PREPARED BY THE CONSULTANT, ARCHITECT AND/OR ENGINEER FOR A PROJECT SOLELY FOR THE PURPOSE OF DETERMINING IF A SIKA SARNAFIL WARRANTY MAY ISSUE FOR THE PROJECT. THIS REVIEW IS NOT TO BE CONSTRUED AS APPROVAL OF DETAILS BY SIKA SARNAFIL AND IS NOT BEING CONDUCTED IN LIEU OF SOUND ENGINEERING AND ARCHITECTURAL PRACTICES AND JUDGMENT AND SHOULD NOT BE RELIED UPON FOR THAT PURPOSE. SIKA CORPORATION ASSUMES NO LIABILITY WITH RESPECT TO THE DESIGN OF THE ROOFING OR WATERPROOFING SYSTEM. THE ARCHITECT, CONSULTANT AND/OR ENGINEER OR DESIGN PROFESSIONAL FOR A PARTICULAR PROJECT BEARS THE SOLE RESPONSIBILITY FOR THE DESIGN OF THE ROOFING OR WATERPROOFING SYSTEM, FOR THE PREPARATION AND APPROVAL OF THE DETAILS AND SHOP DRAWINGS, AND FOR DETERMINING THEIR SUITABILITY FOR A PARTICULAR PROJECT OR APPLICATION. WHILE SIKA SARNAFIL PROVIDES GENERAL INSTRUCTIONS FOR THE INSTALLATION OF ITS MEMBRANE AS WELL AS TRAINING FOR SIKA SARNAFIL AUTHORIZED APPLICATORS, THE MEANS AND METHODS USED BY THE CONTRACTOR FOR SURFACE PREPARATION AS WELL AS THE MEANS AND METHODS EMPLOYED BY THE CONTRACTOR IN THE INSTALLATION OF THE SIKA SARNAFIL MEMBRANE ARE THE RESPONSIBILITY OF THE CONTRACTOR.