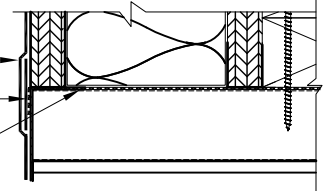
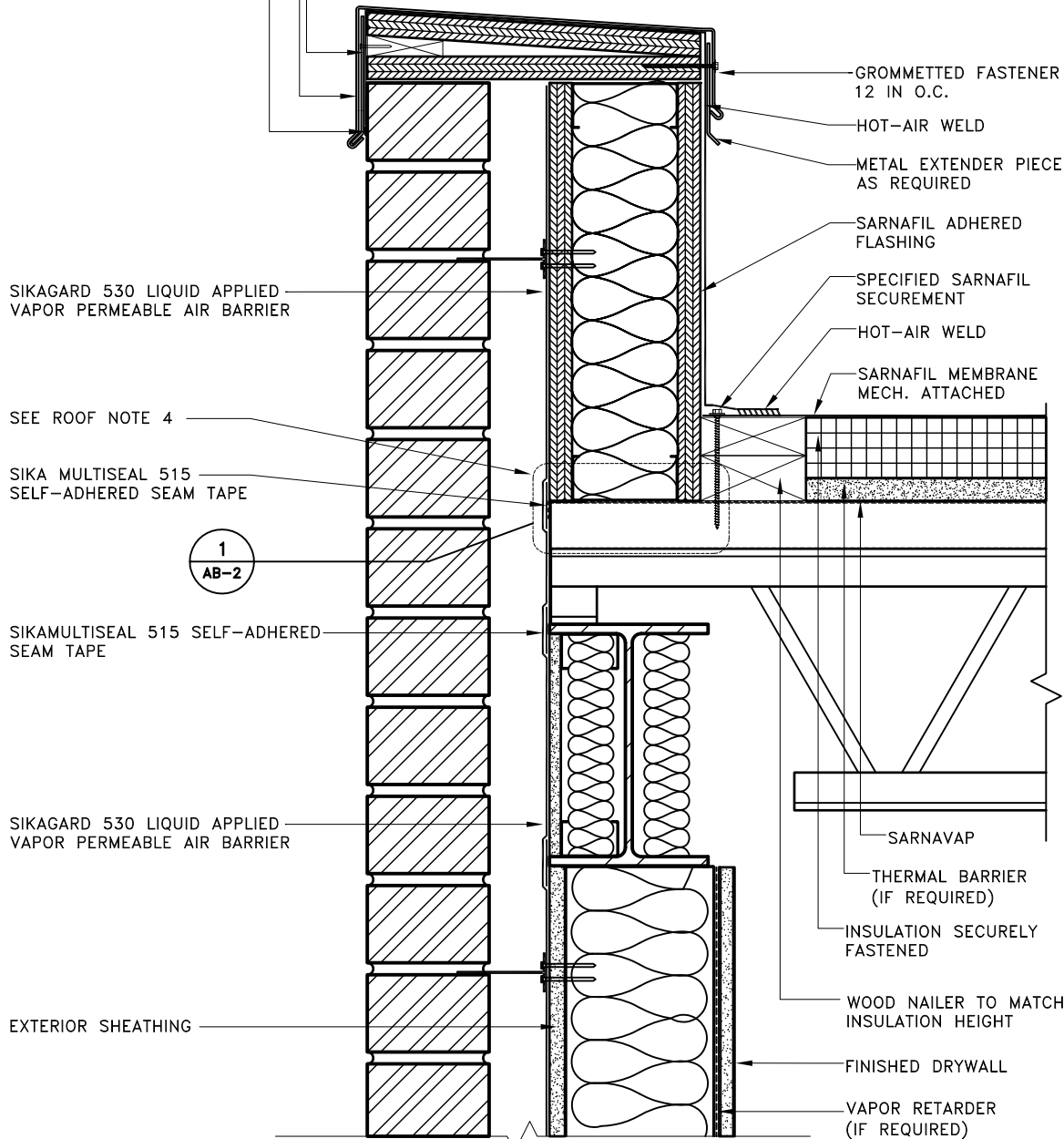


MULTI-PURPOSE TAPE  
 METAL COPING CAP WITH WATERTIGHT JOINTS  
 CONTINUOUS METAL HOOK STRIP (MIN. 22 GAUGE)

SIKAGARD 530 LIQUID APPLIED VAPOR PERMEABLE AIR BARRIER  
 SIKAMULTISEAL 515 SELF-ADHERED SEAM TAPE  
 SARNAVAP



REF: AB-2



**AIR BARRIER NOTES:**

- A. TREAT SHEATHING BOARD JOINTS WITH SIKAFLEX 11FC SEALANT, TREAT CONNECTIONS BETWEEN DISSIMILAR MATERIALS AND OUTSIDE CORNER DETAILS WITH SIKAMULTISEAL 515 SELF-ADHERED TRANSITION SEAM TAPE.
- B. INSTALL SIKAGARD 530 LIQUID APPLIED VAPOR PERMEABLE AIR BARRIER OVER THE EXTERIOR FACE OF THE BACK-UP WALL SUBSTRATE SO AS TO PROVIDE A CONTINUOUS BARRIER TO STOP AIR MOVEMENT AND PREVENT WATER INTRUSION.
- C. ACCEPTABLE BACK-UP WALL SUBSTRATES INCLUDE BUT NOT LIMITED TO DENSGLOSS GOLD, PLYWOOD, CONCRETE AND CONCRETE BLOCK.
- D. PENETRATIONS OF THE AIR BARRIER SYSTEM SHALL BE SEALED WITH SIKAFLEX 11FC SEALANT TO MAINTAIN THE INTEGRITY OF THE AIR BARRIER SYSTEM OVER THE ENTIRE SURFACE.
- E. PROVIDE A FEATHEREDGE OF COMPATIBLE SEALANT OR COATING OF LIQUID APPLIED AIR BARRIER MATERIAL OVER THE LEADING EDGE OF MEMBRANE FLASHINGS TO DIRECT WATER OUT.
- F. REFER TO SIKA TECHNICAL DATA SHEETS AND GUIDE SPECIFICATIONS FOR RECOMMENDED INSTALLATION PROCEDURES AND COMPATIBLE SEALANTS.
- G. DETAIL REPRESENTS GENERAL ARRANGEMENT OF MATERIALS ASSEMBLIES, PROJECT SPECIFICATIONS GOVERN. DO NOT SCALE.

**ROOF NOTES:**

- 1) NAILERS SHALL BE SECURELY ANCHORED TO THE DECK TO RESIST A MINIMUM FORCE OF 300 POUNDS PER LINEAR FOOT. REFER TO FACTORY MUTUAL DATA SHEET 1-49.
- 2) METAL EXTENDER PIECE IS REQUIRED IF EXISTING COUNTERFLASHING IS CONTAMINATED AND OR COUNTERFLASHING FASCIA IS LESS THAN 4-INCHES WIDE.
- 3) AIR BARRIER SHALL BE SEALED AT EDGES.
- 4) SARNAVAP IS INSTALLED AND TURNED DOWN THE WALL 3" AND THEN SEALED WITH SIKAMULTISEAL 515 SELF ADHERED SEAM TAPE.

**BUILDING TRUST**

781-828-5400



usa.sarnafil.sika.com

JOB NAME:

SCALE: N.T.S.

DATE: 1/17

FILE NO.: AB-2

DRW. NO.: XXX

AS A MEMBRANE MANUFACTURER, SIKA CORPORATION ("SIKA") REVIEWS DETAILS PREPARED BY THE CONSULTANT, ARCHITECT AND/OR ENGINEER FOR THE PURPOSE OF DETERMINING IF A SIKA WARRANTY MAY ISSUE FOR THE PROJECT. THIS REVIEW IS NOT TO BE CONSTRUED AS APPROVAL OF DETAILS BY SIKA AND IS NOT BEING CONDUCTED IN LIEU OF SOUND ENGINEERING AND ARCHITECTURAL PRACTICES AND JUDGMENT AND SHOULD NOT BE RELIED UPON FOR THAT PURPOSE. SIKA CORPORATION ASSUMES NO LIABILITY WITH RESPECT TO THE DESIGN OF THE ROOFING OR WATERPROOFING SYSTEM, THE ARCHITECT, CONSULTANT AND/OR ENGINEER OR DESIGN PROFESSIONAL FOR A PARTICULAR PROJECT BEARS THE SOLE RESPONSIBILITY FOR THE DESIGN OF THE ROOFING OR WATERPROOFING SYSTEM, FOR THE PREPARATION AND APPROVAL OF THE DETAILS AND SHOP DRAWINGS, AND FOR DETERMINING THEIR SUITABILITY FOR A PARTICULAR PROJECT OR APPLICATION, WHILE SIKA PROVIDES GENERAL INSTRUCTIONS FOR THE INSTALLATION OF ITS MEMBRANE AS WELL AS TRAINING FOR SIKA AUTHORIZED APPLICATORS, THE MEANS AND METHODS USED BY THE CONTRACTOR FOR SURFACE PREPARATION AS WELL AS THE MEANS AND METHODS EMPLOYED BY THE CONTRACTOR IN THE INSTALLATION OF THE SIKA MEMBRANE ARE THE RESPONSIBILITY OF THE CONTRACTOR. ALL SALE OF SIKA PRODUCTS AND SERVICES ARE SUBJECT TO SIKA' TERMS AND CONDITIONS OF SALE AVAILABLE AT USA.SARNAFIL.SIKA.COM.