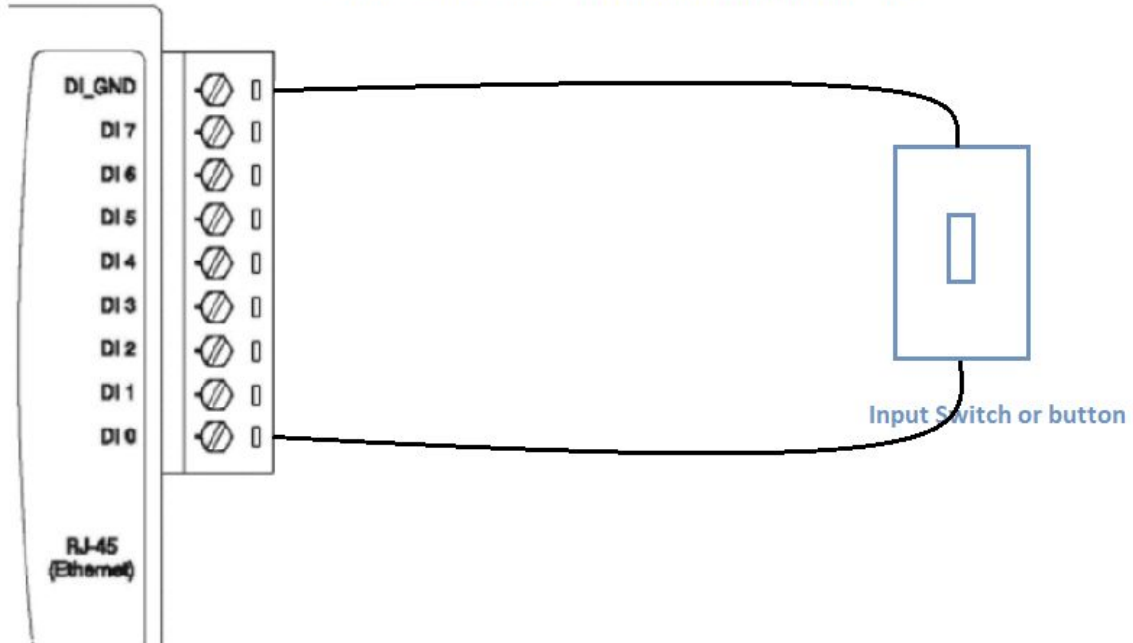


Dry Contact Input on DIO

Duplicate for other switches/input sharing DI_GND



12vdc positive to Voltage Common Collector (DO_VCC)

Lamp + to DO 0 (or any DO #)

12vdc negative to DO_Ground

Lamp - to shared DO_GND

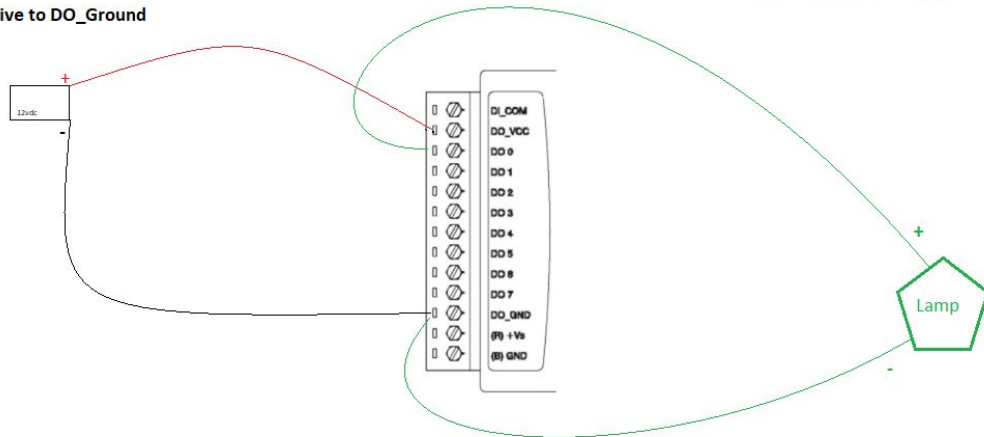


Fig. 4 ADAM-6052 Digital Output Wiring

To work with DW software IPVMS Spectrum

Activate I/O license in Spectrum software

Use Advantech Adam/Apax .NET Utility to search LAN for the device.

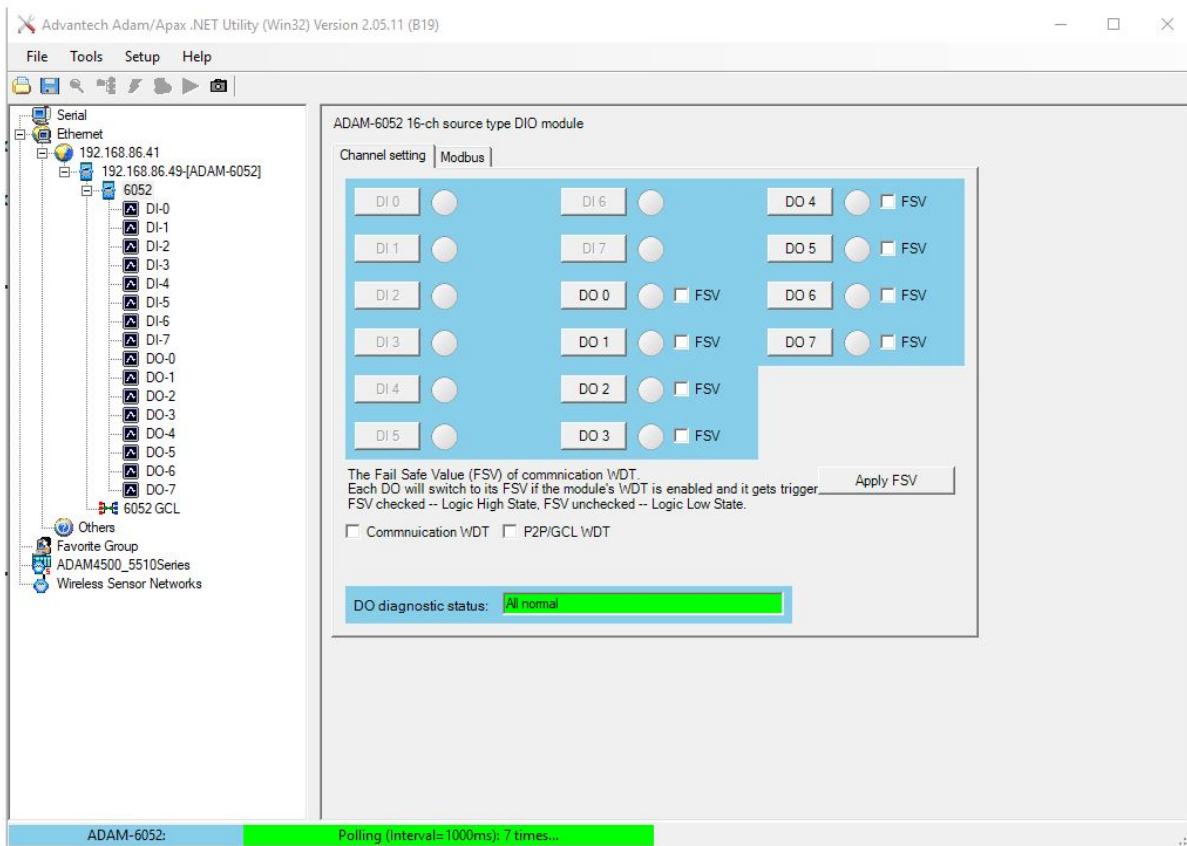
Assign an IP address to unit that matches LAN IP scheme.

Default IP is 10.0.0.1

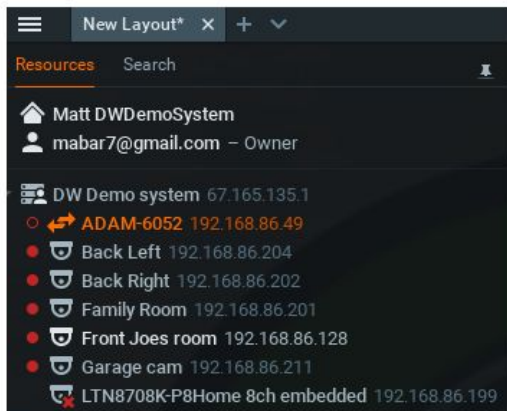
You can also attempt to log directly into the unit via Web interface if you set your IP to match.

I had struggles with JAVA, or the page not loading correctly. Updated FW on ADAM unit with no success

Default password on unit is 8 zeros 00000000



In DW software the ADAM unit should appear in the tree. If not, do a search for devices and make sure it's added.



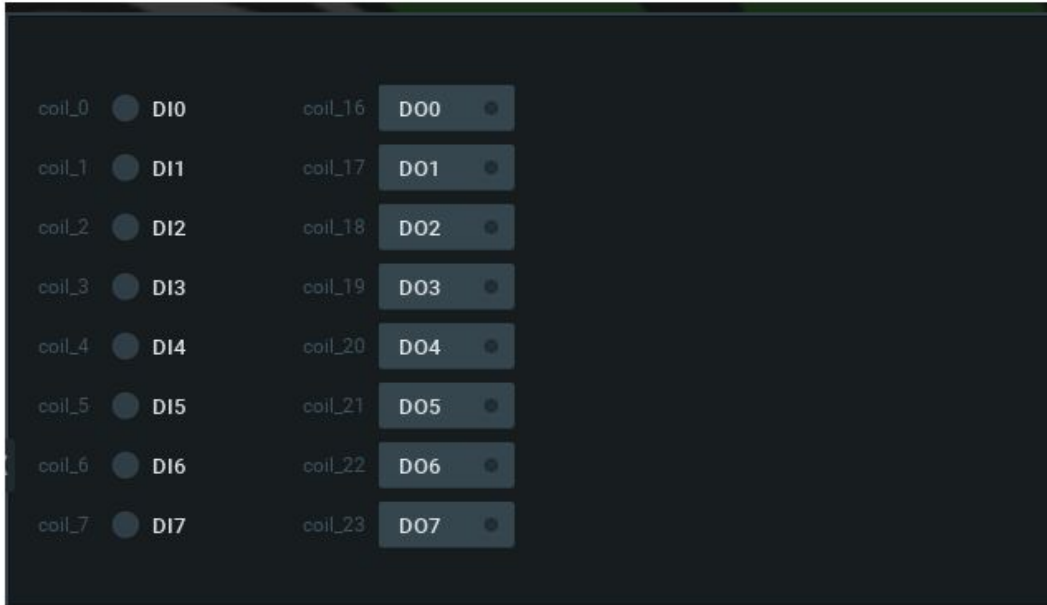
Click on camera settings for ADAM unit. I/O ports should all be OPEN CIRCUIT and TOGGLE STATE

#	ID	Type	Default state	Name	On click	Duration
1	coil_16	Output	Open circuit	LED BULB	Toggle state	
2	coil_17	Output	Open circuit	LED BUZZER	Toggle state	
3	coil_18	Output	Open circuit	D02	Toggle state	
4	coil_19	Output	Open circuit	D03	Toggle state	
5	coil_20	Output	Open circuit	D04	Toggle state	
6	coil_21	Output	Open circuit	D05	Toggle state	
7	coil_22	Output	Open circuit	D06	Toggle state	
8	coil_23	Output	Open circuit	D07	Toggle state	
9	coil_0	Input	Open circuit	DI0		
10	coil_1	Input	Open circuit	DI1		
11	coil_2	Input	Open circuit	DI2		
12	coil_3	Input	Open circuit	DI3		
13	coil_4	Input	Open circuit	DI4		
14	coil_5	Input	Open circuit	DI5		
15	coil_6	Input	Open circuit	DI6		
16	coil_7	Input	Open circuit	DI7		

Enable all devices

Double Click on the ADAM unit to bring it up like a camera in the matrix.

You will see all indicators for DI and DO



Right click on ADAM camera and choose Camera Rules. Choose input from camera and select the ADAM unit. Now create a rule to work with the input and outputs

Event Rules - DW Spectrum Client

21861f9e-2c1a-4504-2c7f-3a29c333526c

+ Add - Delete Event Log...

#	On	Event	Source	->	Action	Target	Interval of Action
<input type="checkbox"/>		On Camera Disconnected	<Any Camera>		Show notification	All Administrators	Every 1 minute
<input type="checkbox"/>		On Camera Disconnected	<Any Camera>		Send email	User admin has invalid email address	Every 6 hours
<input checked="" type="checkbox"/>		While Input Signal on Camera	ADAM-6052		Camera output	ADAM-6052	N/A
<input type="checkbox"/>		On Camera Disconnected	<Any Camera>		Show notification	All Users	Every 30 seconds
<input checked="" type="checkbox"/>		While Input Signal on Camera	ADAM-6052		Bookmark	Front Joes room	N/A
<input checked="" type="checkbox"/>		On Input Signal on Camera start	ADAM-6052		Camera output	ADAM-6052	N/A
<input checked="" type="checkbox"/>		While Input Signal on Camera	ADAM-6052		Bookmark	Garage cam	N/A

Event

When: Input Signal on Camera

At: ADAM-6052

Input ID: DI0

Action

Do: Bookmark

at: Garage cam

Fixed duration: 5 seconds

Pre-recording: 1 seconds

Post-recording: 0 seconds

Tags: METADAT INFO on trigger

Comments: