



Cape May County
Prosecutor's Office
2021 Annual Report



Jeffrey H. Sutherland

Prosecutor

4 Moore Road, DN-110

Cape May Court House, New Jersey, 08210

www.cmcpros.net

2021 Annual Report

Table of Contents

A Message From The Prosecutor

EXECUTIVE OVERVIEW

Section One - LITIGATION / LEGAL DIVISION

I. LITIGATION / LEGAL SECTION

- A- Pre-Indictment Unit
- B- Trial Team A
- C- Trial Team B
- D- Special Litigation Sections
 - 1. Appellate Section
 - 2. Domestic Violence
 - 3. Juvenile Section
 - 4. Station House Adjustment Program
 - 5. Recovery Program

E- Litigation Prosecutor Hierarchy Chart

Section Two - INVESTIGATIONS DIVISION

I. PROFESSIONAL STANDARDS SECTION

- A- Law Enforcement Accreditation
- B- Professional Standards Unit

II. MAJOR CRIMES SECTION

- A-Major Crimes Unit
- B- Crime Scene Investigation Unit (CSU)
- C-Fatal Crash Unit
- D-Economic/Financial Crimes

III. SPECIAL VICTIMS SECTION

- A- Special Victims Unit
 - Megan's Law Unit
 - Cape May County Sexual Assault Response Team (SART)
 - Child Advocacy Center
 - Human Trafficking
 - Child Abduction Response Team
- B- High Technology Crimes Unit

2021 Annual Report

Continued Table of Contents

IV. COMMUNITY OUTREACH SECTION

- A. Community Outreach & Initiatives
 - Veteran's Diversion Program
 - Community Outreach Programs
 - Community Outreach Unit's Hope-One Program
 - Drug Treatment Diversion Program

V. GANGS-GUNS-NARCOTICS TASK FORCE SECTION

- A- Narcotics Unit and Task Force
- B- Intelligence Unit

VI. SPECIAL OPERATIONS & PLANNING SECTION - Specialized Units & Groups

- A- Fugitive Unit
- B- Special Operations & Planning Unit
- C- Critical Infrastructure Coordinator
- D- All Hazards Planning Unit
- E- Health & Bioterrorism Emergencies
- F- Crime Scene Unit
- G- Fatal Crash Investigations Units / Fatal Crash Investigators Task Force
- H- Arson Investigation Unit & Task Force
- I- Counter Terrorism Task Force & Counter Terrorism Coordinator (CTC)
- J- Human Trafficking Unit & Child Abduction Response Team (CART)
- K- County Working Group
- L- Death Pronouncement Unit
- M- Forensic Nurse Examiner (FNE) & Sexual Assault Response Team (SART)
- N- Strangulation/Smothering Response Unit
- O- Polygraph Unit
- P- Alcohol Beverage Control Operations
- Q- Technical Assistance Response Unit
- R- Maritime Security & Response Unit
- S- Mobile Command Unit
- T- Rapid Response Unit
- U- Hostage / Crisis Negotiations Unit & Task Force
- V- Cape May County Regional Special Weapons and Tactics (SWAT) Team

Section Three - SUPPORT SERVICES

- A- Administrative / Secretarial Section
- B- Victim Witness Bureau
- C- Evidence Custodian
- D- Forensic Laboratory

Section Four - 2021 STATISTICAL DATA

A MESSAGE FROM THE PROSECUTOR...

I am pleased to provide to the public the 2021 Annual Report of the Cape May County Prosecutor's Office.

This year I would like to acknowledge the difficult and important work of our Special Victims Unit. Handling sexual assaults and child abuse investigations is extremely demanding and takes a level of commitment and dedication. Our dedicated detectives and assistant prosecutors who work in this unit are exposed to the worst of society and although it is rewarding to know that justice is being done, it is hard not to be emotionally and personally impacted by what they see. The construction of our state-of-the-art Child Advocacy Center is almost complete, and it should be open by the time this report is published. The center provides a welcoming, child friendly environment so when child victims and child witnesses to crimes must participate in our criminal justice system they do so in the least impactful manner as possible. Instead of being taken to a typical law enforcement office that is not welcoming to children they arrive at what appears to be a residential dwelling in a serene surrounding, so they are not traumatized again.

I would also like to acknowledge the continued growth of our Community Outreach Unit ("COU") which continues to engage the public to spread the opportunity for sobriety to people in our community afflicted with SUD and to direct them to needed services instead of the criminal justice system. This past summer we held our first week-long Youth Summer Camp that exposed the campers to a career in law enforcement and more importantly taught them important life lessons while engaging in fun activities. We were also able to host a large Community Walk in Wildwood with the New Jersey Attorney General and the Unity in the Community cookout successfully returned. The creativity shown between our COU and our coalition partners to engage the SUD community and the children in our community has made a positive impact in the County.

By addressing crimes against children in a compassionate manner and attacking the scourge of illegal drugs thru our Community Outreach Unit, we are making an inroads on the challenges that are impacting the lives of our residents. I consider it a great privilege to serve Cape May County as County Prosecutor.

Jeffrey H. Sutherland, County Prosecutor



Executive Overview

There are approximately 493 sworn, full-time police officers in Cape May County within the fifteen law enforcement agencies; which includes, eleven municipal police departments, two County law enforcement agencies, one Authority law enforcement agency and the New Jersey State Police's Marine, Highway and General Policing Stations. There are 72 Administrators supervising 75 Sergeants, 266 Patrolman and 61 Detectives, and 19 Full-Time Special Law Enforcement Officers in the County. The Cape May County Prosecutor's Office oversees all major criminal investigations and prosecutions, and assists in the training of State, County and municipal officers and citizens.

The 2021 United States Census, estimated that the number of people residing in Cape May County is approximately 95,263. Cape May County remains a popular summer destination with over thirty miles of beaches, and attractions for tourist. During the summer tourism season, the population swells to over a million residents on weekends with tourist outnumbering full-time residents nine to one. The Cape May County tourism industry drew nearly 10.3 million visitors annually, generating \$6.6 billion dollars in 2021, with leisure and hospitality being the county's largest employer, contributing over 61.5% to the County's total share of tourism employment. Tourism revenues in Cape May County are second only to those of Atlantic City, and account for 11.8% of New Jersey's total excise tax revenues, increased 7.44% from 2018. The second largest industry in Cape May County is the commercial fishing industry, and Cape May County is in the top ten in the United States, earning the rank of second largest commercial fishing port on the east coast.

With explosive seasonal population increases, so too does crime and calls-for-services of Cape May County law enforcement. Leading the prosecution efforts was First Assistant Prosecutor, Michelle DeWeese, along with Chief Assistant Prosecutor Saverio Carroccia and Chief Assistant Prosecutor Dara Paley, who supervised a staff of eleven (11) Assistant Prosecutors and five (5) support personnel who are assigned to the legal division of the office. The proficient and experienced legal staff of Assistant Prosecutors are assigned to various duties and responsibilities; including, Grand Jury preparation, proceedings, trials, juvenile court, domestic violence, appeals and drug court. Additionally, all legal staff act as legal liaisons to all law enforcement operating within the county, as well as internally with specialized units within the Prosecutor's Office. As with other counties in the state, the Office has committed three (3) Prosecutors, one (1) Detective, two (2) Agents and two (2) support personnel to manage and comply with the new Bail Reform directives. The Victim-Witness Office supports victims of crimes throughout the processes.

The Investigative Division is comprised of Chief Skill, Captain Emmer, four (4) Lieutenants, and seven (7) Sergeants, supervising thirty (30) Detectives, and nine (9) agents. The Investigative Division is divided into seven (7) Sections; specifically, the Professional Standards Section, Litigation / Trial Support and Community Outreach Section, Major Crimes Section, Special Victims Section, the Gangs-Guns and Narcotics Task Force Section, the Special Operations and Planning Section, and the Evidence Section. The Internal Affairs Unit, within the Professional Standards Section, reports directly to the Chief of Detectives.

Even with the continued challenges of COVID-19, our Hope One Van was out in the community continuing its mission to reduce substance use disorder in our county and placing people who suffer from substance use dependency into the proper care facilities and/or providing them needed services. Hope One also continued training people in the use of Narcan and provided free Narcan Kits to those who were trained.

Consistent with violent crime reduction initiatives, the Gangs, Guns and Narcotics Task Force continues to focus on suppressing organized networks engaged in violence, gun possession and narcotics distribution. The Task Force is supervised and staffed with Prosecutor's Office Detectives and Task Force Officers from local law enforcement agencies; specifically, the Ocean City Police Department, the Cape May County Sheriff's Department, and the Wildwood Crest Police Department in 2021. Other state and local agencies often assign personnel to the Task Force when adequate staffing permits. Our highly trained detectives utilize a variety of investigative techniques including electronic surveillance and undercover operations. As part of their duties, the detectives assigned to this section also coordinate intelligence information with municipal police departments throughout the County; including, counter terrorism leads and homeland security matters.

The Special Operations and Planning Section is staffed with experienced members of the office assigned to provide coordination and leadership in some of the newly emerging areas of responsibility that the office has been directed to undertake by the Attorney General and by the Director of Homeland Security. The Prosecutor has taken a lead role in the planning and coordination of large-scale events in utilizing the National Incident Command System. As an example, members of the section plan and routinely hold exercises and training with other first responder agencies that consume considerable time and effort. Demands on Homeland Security initiatives increase yearly; therefore, homeland security, counter terrorism and preparedness planning are part of this section's duties, which include the Critical Infrastructure Coordinator. School Safety and Security initiatives, the Prosecutor's Office Rapid Response Team and the Cape May County Regional SWAT Team also fall under the responsibilities of this section. Due to the sensitive and confidential nature of internal affairs investigations, a Detective Sergeant and two Detectives have been assigned to this section to investigate criminal allegations against municipal police officers and reports directly to the Chief of County Investigators.

The Cape May County Prosecutor's Office's Major Crimes Section's core purpose is the detection, apprehension, arrest, and conviction of criminals within the jurisdiction of Cape May County. The investigative section is comprised of County Detectives sworn to protect and serve the residents and visitors to Cape May County and ensure the impartial application of justice. The Detectives assigned to the Major Crimes Section have a vast experience and diversity in criminal investigations and with the cooperation of other law enforcement agencies, local government, general public and the business community, effectively promote the general safety and security of Cape May County. The composition of the Cape May County Prosecutor Office Major Crimes Section is designed to conform to the Law Enforcement needs within the County. This section is comprised of several units, each having a specialized function in regard to the investigative necessities; consisting of the Major Crimes Unit, the Special Victims Unit, the High-Tech Crimes Unit, the Economic Crimes Unit, and the Litigation Support Unit. Additionally, personnel are on-call to staff the Crime Scene Unit, Fatal Crash Unit, Arson Unit, Polygraph Unit, and several others: including, the Maritime Security & Response Unit and the Mobile Command Unit. The Major Crimes section is responsible for investigating homicides, suicides, suspicious deaths and the review of all unattended deaths that occur within Cape May

County. This section also assists the fourteen (14) other law enforcement agencies within Cape May County with investigations; including, aggravated assaults, armed robberies, burglaries, sexual assaults, child abuse, Megan's Law, arsons and theft.

Due to the prolific use of computers, cellular telephones, digital data, and the Internet today and the ever-increasing sophistication of criminals, law enforcement faces what may be the greatest challenger ever, that is investigating and prosecuting high technology crimes with the use of computers, smart phones, and other devices. The High Tech Crimes Unit performs forensic analysis of computers and other media of evidentiary value seized by the Cape May County Prosecutor's Office and other State and local law enforcement agencies. The expertise of our trained Detectives also assists the local agencies with other criminal investigations that benefit them in addition to the accessibility of our highly trained forensic and fatal crash teams, as well as the Technical Assistance Response Unit.

A skilled support staff completes the Cape May County Prosecutor's Office with fifteen (15) experienced legal secretaries, typists and clerks assigned to various areas throughout the office responsible for the transcription of major crime statements, intake of criminal complaints and police reports from the Prosecutor's Office as well as all law enforcement agencies in the County, data processing, filing and general clerical work.

Included with the support staff is an Office of Victim/Witness Advocacy within the Prosecutor's Office comprised of trained staff of four counselors, supervised by a Coordinator, offering a wide array of services to victims of crimes. Additionally, there are nine (9) sworn Agents assigned to such specialized duties in the office as criminal case preparation, evidence custody, intelligence, and computer network administration. In 2020, we started construction of our Child Advocacy Center to better serve the needs of our child victims and witnesses.

Our Forensic Chemistry Laboratory is staffed by one (1) certified Chief Forensic Chemist and two (2) Chemists is an asset to the Office and one of only (3) certified and accredited forensic laboratories in the entire state of New Jersey capable of drug analysis. The Cape May County Prosecutor's Office Forensic Laboratory provides timely drug analysis and related services to the County's law enforcement community, as well as in special circumstances to federal agencies; such as, the Federal Bureau of Investigation and Drug Enforcement Administration, and state agencies; such as, the New Jersey State Police and Alcohol Beverage Control.

Section One – LITIGATION / LEGAL DIVISION

The Legal Division of the Cape May County Prosecutor's Office is comprised, under County Prosecutor Jeffrey H. Sutherland, of First Assistant Prosecutor Michelle L. DeWeese who oversees a Litigation Section and an Investigation/Special Litigation Section. Chief Assistant Prosecutors Saverio M. Carroccia and Dara L. Paley lead the Litigation Section, which is comprised of eleven (11) Assistant Prosecutors. These attorneys are responsible for the prosecution of indictable matters not only originating in the Prosecutor's Office but also received from the sixteen (16) municipalities in Cape May County. In addition to prosecuting indictable matters, the Assistant Prosecutors provide legal advice, counsel and support to eleven (11) municipal police departments, the State Police and the Delaware River and Bay Authority. This is accomplished by, inter alia, providing on call services, obtaining Court Orders, Wiretaps and Search Warrants, as well as providing legal training for academy recruits, in-service officers and corrections officers at the Cape May County Police Academy.

The Cape May County Prosecutor's Office utilizes two (2) methods of prosecuting cases; vertical and horizontal. In vertical prosecutions, cases are assigned to a specific Assistant Prosecutor from inception to Grand Jury preparation through to trial. This method is utilized in specialized cases such as homicides, cold cases, child abuse, sexual assault, financial crimes, and narcotics. The First Assistant Prosecutor reviews the initial case and assigns it based upon her initial review. In horizontal prosecution cases, the First Assistant Prosecutor initially reviews the cases, they are then assigned to one of the two trial teams and forwarded to the Pre-Indictment Unit for review, preparation and either presentation to the Grand Jury, downgrade to Municipal Court or administrative dismissal. If a case is indicted, the First Assistant Prosecutor then assigns the case to an attorney whose responsibility it is to then handle the case through disposition. This includes handling the arraignment, disposition conferences, pretrial conference, motions, and, if needed, trial. The Appellate Section generally handles post-conviction and appellate matters on both vertically and horizontally prosecuted cases.

LITIGATION DIVISION – This Division oversees eight (8) sections.

A. PRE-INDICTMENT UNIT – In 2021, in accordance with the new procedures and practices implemented by P.L. 2014, The Criminal Justice Reform Act, and Attorney General Directive 2016-6, the Pre-Indictment Unit filed 455 Motions to Detain Defendants pre-trial. Of these Motions, 200 were granted, 166 were denied and 79 were withdrawn or dismissed.

B. TRIAL TEAM -A- — Trial Team -A- is made up of three (3) Assistant Prosecutors who handle cases assigned to the Honorable Christine Smith.

C. TRIAL TEAM -B- — Trial Team -B- is made up of five (5) Assistant Prosecutors who handle cases assigned to the Honorable J. Christopher Gibson.

D. SPECIAL LITIGATION UNIT – The Special Litigation Unit oversees the following prosecution sections.

- I. APPELLATE SECTION** – In 2021, the Assistant Prosecutor assigned to this section handled fifteen (15) petitions for post-conviction relief, thirty-five (35) appeals to the Superior Court of New Jersey- Appellate Division, five (5) appeals to the New Jersey Supreme Court, one (1) appeal to the 3rd Circuit Court of Appeals, three (3) Federal Petitions for *habeas corpus* and two (2) Municipal Court appeals.

2. DOMESTIC VIOLENCE SECTION – The Cape May County Prosecutor’s Office handled 377 cases involving victims of domestic violence in 2021. These cases range from aggravated and sexual assault to terroristic threats and contempt (violations of Restraining Orders). Currently, the Section is staffed by three (3) experienced attorneys. Two of these Assistant Prosecutors are assigned to handle all indictable level crimes committed against victims of domestic violence (aggravated assaults, sexual assaults, terroristic threats, etc.) from their inception through disposition. The third Assistant Prosecutor assigned to the Section handles all cases involving Violations of Restraining Orders (contempt) that occur in Cape May County, including those committed offenses by Defendants who may reside in other states. This Assistant Prosecutor is also entrusted with the determination as to whether or not weapons seized in connection with matters of domestic violence should be returned to their owners at the conclusion of the cases or whether they should be forfeited.

As was mentioned, all Assistant Prosecutors assigned to the Section are involved in the matters from the inception of the case. As such, they are often asked to not only provide legal advice to but also approve the charging decisions made by the officers investigating the matters. Thereafter, all three (3) Assistant Prosecutors are responsible for meeting with victims and attempting to ascertain what disposition would provide the most just result. All three (3) Assistant Prosecutors often make sentencing recommendations designed to see that justice is done and that victims are kept safe. Those recommendations include but are not limited to: Incarceration in New Jersey State Prison; Non-Custodial Probation; and Compliance with Recommendations made by Drug and Alcohol and Mental Health Evaluators.

3. JUVENILE SECTION – The Juvenile Justice Unit is responsible for the screening, investigating and prosecuting of all crimes and offenses committed by individuals who are under the age of 18 at the time of the commission of the offense. These offenses can range from disorderly conduct to robbery, sexual assault, or homicide. A single Assistant Prosecutor is assigned to this section, along with an agent, victim witness advocate, and a clerical staff member. The agent is responsible for ensuring that all necessary discovery is compiled for each case so that it is ready for prosecution and provides support for trial preparation. The Assistant Prosecutor prosecutes the cases to completion and is responsible for making recommendations for disposition of cases, including transfer, deferral, plea, trial or waiver. In 2021, the Unit handled more than 82 cases through the traditional juvenile route (as such, this figure does not include those juveniles who were screened for diversionary type programs). The majority of the charges handled were burglary, theft, assault, and cases involving the possession of weapons or controlled dangerous substances.

The Assistant Prosecutor assigned to the Juvenile Section represents the Cape May County Prosecutor’s Office as a member of the County Council for the Juvenile Detention Alternative Initiative (JDAI), a national program. The goal of JDAI is to improve the juvenile justice system and outcomes for youth. The Assistant Prosecutor also focuses on promoting accountability for the juvenile’s actions and protecting the community. The Assistant Prosecutor provides daily legal advice to the police regarding juvenile matters, including applications for fingerprinting and photographing juveniles, investigative detention applications, and search warrants. In addition, she is responsible for training law enforcement on the laws related to juvenile justice. Each municipal law enforcement agency within the county has a designated juvenile law enforcement officer who works with the Juvenile Unit. The Juvenile Officer Association, comprised of the county juvenile officers and the school resource officers, has been created to work with the Juvenile Unit of the Prosecutor’s Office to provide support and communication for those involved in law enforcement within Cape May County specializing in the juvenile justice system.

4. STATION HOUSE ADJUSTMENT PROGRAM – The Prosecutor’s Office has placed an emphasis on ensuring that low level juvenile offenders are given an opportunity to receive services and avoid entry into the juvenile justice system. Working with the County of Cape May, various agencies within the county, and in accordance with the terms of Attorney General Directive 2020-12, the Cape May County Prosecutor’s Office created an enhanced Station House Adjustment program that allows the low-level offender to attend a course on proper decision making, receive drug and alcohol treatment, and/or receive mental health treatment in lieu of being formally charged as a juvenile. The goal of the program is to reduce recidivism and ensure that these juveniles have an opportunity for rehabilitation without court involvement. The program is appropriate for juveniles that are truant, runaways, curfew violators, and those who commit minor offenses. In 2021 there were 262 Station House Adjustments completed in Cape May County, an actual increase of approximately seventeen (17) % from the 217 completed in 2020.

5. **RECOVERY COURT** – With a notable increase in the number of arrests in drug cases, and the percentage of those sentenced to serve time in state institutions, Recovery Courts were created to generate significant cost savings by replacing escalating per inmate annual incarceration costs, with less expensive treatment services. Successful participation in Recovery Court has shown to substantially reduce drug use and recidivism.

Potential Recovery Court participants come under the Court's supervision after arrest. Once accepted into the Recovery Court Program, participants begin a clinically driven treatment program that generally lasts from eighteen (18) months to Five (5) years. Participants are required to attend treatment sessions, undergo random urinalysis, meet regularly with their probation officers and appear frequently before the Recovery Court Judge. The Cape May County Superior Court's Recovery Court encourages personal accountability by the participant; payment of child support and other financial obligations; education and full-time employment; and involvement with self-help and community organizations to support participant recovery after graduation. 2021 saw 48 new participants accepted into the program and had 36 enrolled participants graduate.





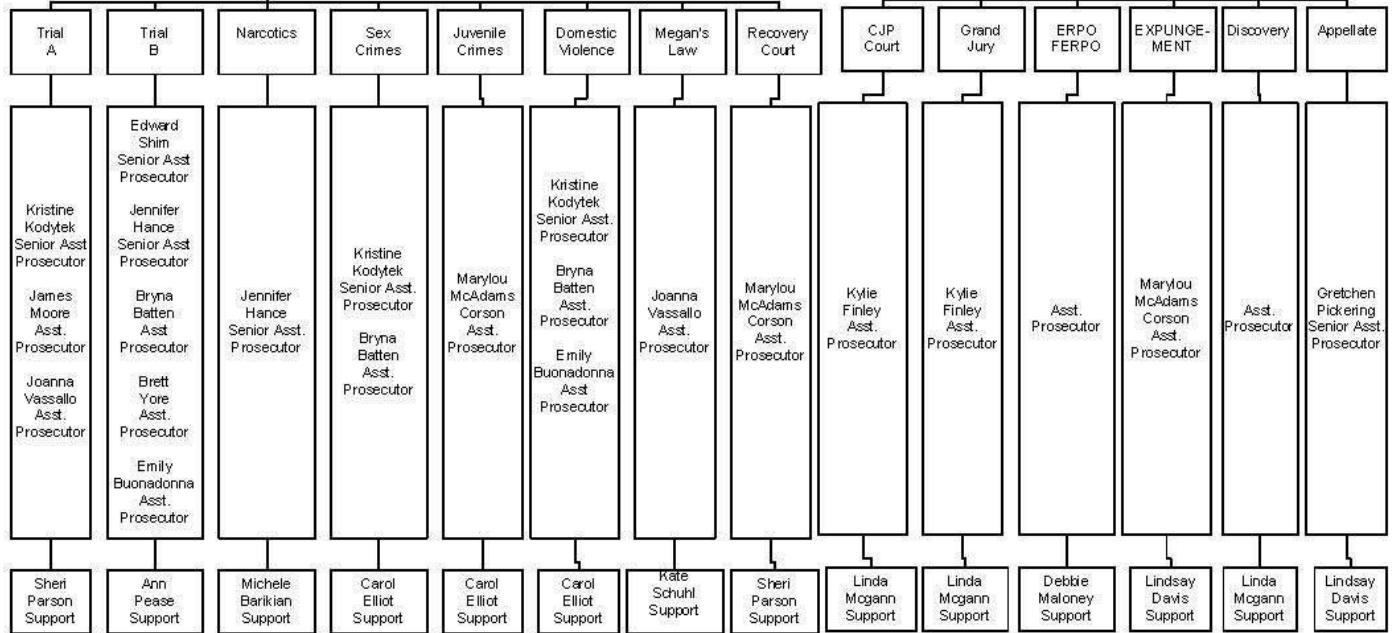
Cape May County Prosecutors Office

**Jeffrey Sutherland
Prosecutor**

**Michelle L. Dewees
First Assistant
Prosecutor**

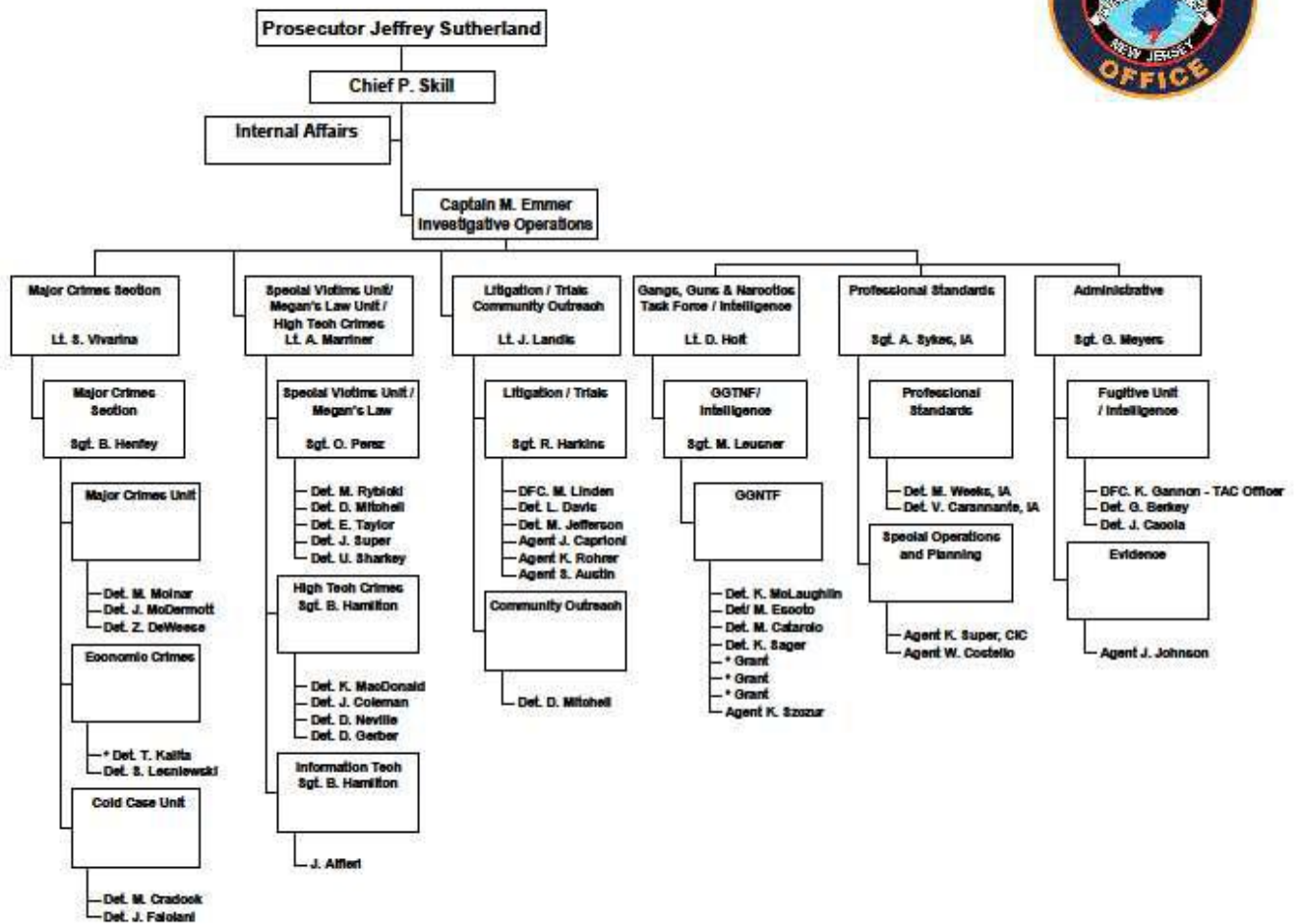
**Saverio M. Carroccia
Chief Assistant Prosecutor**

**Dara Paley
Chief Assistant Prosecutor**



Section Two - INVESTIGATIONS DIVISION

Cape May County Prosecutor's Office Investigative Table of Organization



8/31/2020

- I. **PROFESSIONAL STANDARDS SECTION**– The Professional Standards Unit; includes the Internal Affairs Unit, and reports directly to the Chief of County Detectives. Here, a Lieutenant is responsible for supervising a Sergeant and three (3) County Detectives in the Professional Standards Section. This section is responsible for updating and drafting policies and procedures for the Office, maintaining accountability of those, and preparing for and completing requirements for Accreditation.

A. LAW ENFORCEMENT ACCREDITATION

The Professional Standards Unit has been assigned by the County Prosecutor with completing all the required tasks to attain and maintain Law Enforcement Accreditation through the New Jersey Chiefs of Police. On June 13, 2019, the Cape May County Prosecutor's Office was re-accredited by the New Jersey State Association of Chiefs of Police. This re-accreditation begins the next cycle of accreditation certification in which the Cape May County Prosecutor's Office will collect proofs of compliance with the accreditation standards. The Cape May County Prosecutor's Office must comply with 112 standards in order to achieve re-accredited status, the onsite for accreditation will occur in 2022.

Prosecutor Sutherland indicated, "Accreditation results in greater accountability within the agency, reduced risk and liability exposure, stronger defense against civil lawsuits, increased community advocacy, and more confidence in the agency's ability to operate efficiently and respond to community needs." The Accreditation Program Manager for the New Jersey State Association of Chiefs of Police is Mr. Harry J Delgado, Ed.S., who stated that "The assessment team is composed of law enforcement practitioners from similar New Jersey law enforcement agencies. The assessors reviewed written materials, interviewed agency members, and visited offices and other places where compliance with the standards were observed. The Commission's assessors completed their review of the agency, then reported to the full Commission," who certified that the Cape May County Prosecutor's Office was granted accredited status.



B. PROFESSIONAL STANDARDS UNIT

The Chief of County Detectives directly oversees a Lieutenant, Detective Sergeant and three (3) County Detectives in the Professional Standards Unit. Law enforcement agencies in Cape May County must be committed to providing law enforcement services that are fair, effective, and impartially applied. Toward that end, law enforcement personnel are to be held to the highest standards of official conduct and are expected to respect the rights of all citizens. Law enforcement officer's adherence to these standards, motivated by a moral and professional obligation to perform their job to the best of their ability, is the ultimate objective of all law enforcement agencies within Cape May County.

The Internal Affairs/Professional Standards function is important for the maintenance of professional conduct in a law enforcement agency. The integrity of the agency depends on the personal integrity and discipline of each employee. To a large degree, the public image of the agency is determined by the quality of the Internal Affairs/Professional Standards function in responding to allegations of misconduct by the agency or its employees.

Citizen confidence in the integrity of a law enforcement agency increases through the establishment of meaningful and effective complaint procedures. This confidence engenders community support for the law enforcement agency. Improving the relationship between the officers and the citizens they serve facilitates cooperation vital to the agency's ability to achieve its goals to protect the community.

The Cape May County Prosecutor's Office Professional Standards Unit receives notification of all the following incidents.

1. Criminal Conduct of a Law Enforcement Officer: All law enforcement agencies under the direction of the County Prosecutor shall immediately notify the Cape May County Prosecutor's Office of any allegation involving criminal wrongdoing by a law enforcement officer.
2. Any arrest of an officer, on or off duty, to include disorderly persons, petty disorderly offenses, driving under the influence, etc.
3. Bias or Differential Treatment by a Law Enforcement Officer: If complaint is a bias incident, the agency will include the Bias Incident Report.
4. Use of Force which results in death or serious bodily injury.
5. Law Enforcement Officer Discharge of a Weapon.
6. Use of Deadly Force which results in any injury.
7. Complaints Regarding Excessive Use of Force.
8. The death of an individual in the custody of Law Enforcement.
9. Conductive Energy Device Deployment.
10. Law Enforcement Officer Positive Drug Test Result.
11. Complaints against a law enforcement executive, or a member of the executive's senior management team:
These complaints may originate from a member of the public or from an employee of the agency.



All such complaints are documented and referred to the Cape May County Prosecutor's Office for review and investigation if deemed necessary. The Professional Standards Unit conducted several criminal investigations on Cape May County Law Enforcement Officers in 2021.

II. MAJOR CRIMES SECTION – a Lieutenant of County Detectives is responsible for supervising the Major Crimes Bureau comprised of the Major Crimes Unit and Economic Crimes Unit. Reporting to the Lieutenant is one Detective Sergeant, supervising eight investigators.

A. MAJOR CRIMES UNIT (MCU)

The Major Crimes Unit of the Cape May County Prosecutor's Office is the lead investigative agency for all homicides that occur within Cape May County. The Cape May County Prosecutor's Office Major Crimes Unit maintains a homicide clearance rate of 97.8%. Additionally, the Major Crimes Unit is responsible for investigating all aggravated assaults, missing persons, kidnappings, shootings and official corruption. Under usual circumstances these investigations are conducted in cooperation with the municipal police department where the crime occurred.

Detectives with the Major Crimes Unit may also be called upon to conduct investigations that are not violent or as serious in nature but are nevertheless important to the good and welfare of the community. An example of these cases would include social services fraud, welfare fraud, Sunshine Law violations and prostitution stings.

The Major Crimes Unit is staffed with six detectives and one sergeant. Many of the detectives in the Major Crimes Unit hold secondary responsibilities on such units as Crimes Scene, Fatal Accident, Rapid Response, Arson and SWAT. The expertise of the detectives within the Major Crimes Unit are often called upon by the local law enforcement agencies within the county to assist with interviews, polygraphs and the obtaining of Communication Data Warrants, Search Warrants, Subpoenas and Consensual Intercepts.

Each detective is assigned to an open and unsolved "cold case" investigation to investigate either a homicide or a missing person. The office reports a commendable homicide clearance rate over the past forty-seven years due to the dedication and hard work of these detectives. There have been 142 homicides in Cape May County since 1970, resulting in two unsolved homicides, and eight(8) missing person investigations that remain active.

CAPE MAY COUNTY CLEARANCE RATE = 97.8%

CAPE MAY COUNTY OPEN HOMICIDE CASES:

Carol Ann Hill on 6/8/1970 Wildwood 70-266

Patricia Thompson on 6/1/1982 Wildwood 82-262

The suspect in Thompson is deceased, after admitting his participation in the homicide to his wife.

John Attenborough, Lower Township 82-320. *Charges on the main suspect have been dismissed on motion of the Prosecutor; however, remains the main suspect.*

Susan Negersmith on 5/26/1990 Wildwood 90-201

Kaleemulla Khawaja 5/30/1995 NJSP 95-246

This investigation continues.

2021 Significant Cases – Homicide:

At approximately 2345 hours on July 14th, 2021, the Wildwood Police Department (WPD) responded 212 East Roberts Ave, Apartment 1 for a 911 call for a medical emergency. Upon arrival, officers were met by Carrie Cipollono (W/F, DOB: 3/5/87) who provided Jason Ruiz, AKA "Monkey" (H/M, DOB 4/15/84) was unresponsive in her apartment due to a suspected CDS overdose. EMS was initiated but Ruiz was ultimately pronounced on scene.

On July 16th, an autopsy was performed by The Southern Regional Medical Examiner's Officer (SRMEO) at Shore Memorial Hospital. As result of the autopsy, it was determined that internal injuries, such as a ruptured spleen, were most likely the cause of Ruiz's death. Photographs of the autopsy revealed Ruiz's back was severely bruised, and a distinct shoe print was visible on his skin. SRMEO also reported a large amount of blood was present in his abdomen.

Further investigation by WPD detectives revealed that at approximately 1315 hours on July 14th a 911 call was placed regarding a fight at 212 East Roberts Ave APT 1. Body Worn Camera (BWC) video was obtained from officers who responded to the scene. Footage revealed Cipollono and Ruiz inside the apartment denying anything occurred. Ruiz appears shaken in the video and minor injuries are visible on his face; Ruiz refused medical attention and the scene was cleared.

In the following days, surveillance video was obtained capturing the entrance to the alleyway leading to the side door of 212 East Roberts Ave. Apt#1. The video shows two (2) males wearing white shirts, shorts and hats enter the alleyway at 1313 hours on the time stamped video. At approximately 1315 hours on the time stamped video, the males exit and depart walking east bound on Roberts Ave and are lost to view. At approximately 1316 hours, a distinct blue Acura sedan is seen driving west bound on Roberts Ave turning north bound on Pacific Ave. Members of the Cape May County Prosecutor's Office High Technology Crime Unit (CMCPO HTCUC) obtained multiple surveillance videos showing the vehicle travel directly back to Commissioners Court, located at 3700 New Jersey Avenue, Wildwood.

Members of the WPD Detective Division were familiar with vehicle and identified that it is frequently operated by Luis Rosario (H/M, DOB: 11/2/86). Surveillance video enhancement later corroborated the license plate as R89 JXU which is registered to Carmen Rosario of 311 East Roberts Avenue, Apartment #5, Wildwood.

After further investigation it was determined that five (5) individuals were present inside the apartment at the time of the assault. All were subsequently identified, located, and interviewed.

Multiple court authorized search warrants were executed on apartments in Commissioners Court and as a result Ortiz's cellular telephone and a single sneaker, whose tread matched that of the imprint left on Ruiz's back at the time of his death, were seized. Another search warrant was executed on the Acura bearing New Jersey registration R89 JXU which resulted in the seizure of Rosario's cellular telephones. Subsequent analysis of the seized cellphones revealed multiple text conversations between Ortiz and Ruiz in the days and hours leading up to the assault and death of Ruiz that indicated Ruiz owed Ortiz an amount of money for heroin.

On July 23, 2021, probable cause was found to issue warrant 05142021000279 for Jeremias Ortiz for the following charges: Murder (2C:11-3A(1), Aggravated Manslaughter (2C:11-4A(1), Conspiracy to Commit Murder (2C:5-2A(2), Possession of a Weapon for an Unlawful Purpose (2C:39-5D) and Unlawful Possession of a Weapon (2C:39-4D). Ortiz lodged in Cape May County Correctional Facility without incident.

Multiple attempts to proffer Ortiz to obtain positive identification and a statement against Rosario have been met with negative results.

This case is pending Court.

2021 Significant Cases – Death by Auto / Assault by Auto:

In June of 2021, the Ocean City Police Department received the report of a two-car fatal motor vehicle crash at the intersection of 9th Street and Bay Avenue. Members of the Cape May County Prosecutor's Office Fatal Crash Team were contacted to conduct this investigation.

An investigation was initiated, during which the scene was processed utilizing laser scanner technology and digital photography, surveillance video was recovered, multiple warrants were authored and executed, data was collected from the Event Data Recorder located in the target vehicle, and a scene reconstruction was completed. Utilizing all available investigative outlets, it was determined that the driver of a 2018 Jeep Wrangler failed to yield to a traffic control signal and instead accelerated towards the intersection and through a red light. Upon entering the intersection well after the light had turned red, the Jeep Wrangler collided with the passenger side of a 2005 Mercury Sable which was occupied by both the driver and a passenger. The passenger was killed on impact and the driver sustained serious bodily injuries. As a result of this investigation, the driver of the Jeep Wrangler was subsequently charged with Death by Auto and Assault by Auto.

2021 Significant Cases - Bank Robbery:

Beginning in December of 2020 and continuing into January 2021, two individuals perpetrated successful bank robberies at the Sturdy Savings Bank in Dennisville, Cape May County; TD Bank in Marmora, Cape May County; and TD Bank in the Cape May Court House section of Middle Township, Cape May County.

These same two individuals also attempted robberies at the First Bank of Sea Isle in Seaville, Cape May County and the Franklin Savings Bank in Ocean View, Cape May County. These robberies were unsuccessful due to the lobbies of these banks being locked as a result of the Coronavirus pandemic.

The subsequent three-month investigation conducted by members of the Cape May County Prosecutor's Office, New Jersey State Police, Middle Township Police Department, Lower Township Police Department and the Federal Bureau of Investigation identified Damian LeBlanc, 39 years old of Lower Township, NJ and Edward Hulme 43 years old of Lower Township as the individuals responsible for these robberies.

During a post Miranda interview, LeBlanc admitted that he and Hulme committed the successful and failed bank robberies throughout Cape May County.

LeBlanc and Hulme were both charged with five counts of Robbery 2C:15-1A(1) and five counts of Conspiracy to Commit Robbery.

This case is pending Court.

B. CRIME SCENE INVESTIGATION UNIT (CSU)

The Crime Scene Unit (CSU) of the Cape May County Prosecutor's Office is staffed by five detectives and are responsible for the processing of crime scenes at all homicides, aggravated assaults, sexual assaults, shootings, burglaries, robberies, fatal fires, suicides and any death investigation where the circumstances of the death are questioned or unusual. Additionally, the Crime Scene Unit will respond to any investigation at the request of a local law enforcement agency.

The processing of a crime scene will minimally include the locating, collecting and securing of physical evidence, photography and scene diagramming. Depending on the crime being investigated, the evidence to be collected may include items such as; weapons, clothing, latent prints, hairs, fibers as well as blood and other bodily fluid. In the case of a death investigation, members of the Crime Scene Unit will attend the autopsy of the decedent in order to document any injuries and collect addition evidence. All evidence is collected in accordance with the New Jersey State Police Evidence Manuel.

At the conclusion of the scene and autopsy portion of the investigation the members of the Crime Scene Unit are responsible for the further processing of evidence and for submitting items of evidence to the New Jersey State Police Forensic Laboratory for additional testing and analysis.

C. FATAL CRASH INVESTIGATION UNIT (FCIU)

Each fatal or serious motor vehicle crash has the potential to become a criminal investigation; therefore, collecting and preserving evidence is paramount. To complete a thorough crash investigation, analysis and crash reconstruction, the use of an extensive amount of resources, training, experience, coordination and time is required. The Fatal Crash Investigation Unit was established in 2002, utilizing grant awards to purchase advanced technological equipment to aid investigation. Detectives utilize laser range finding equipment and FARO 3D Scanners on scene, among other tools, to thereafter reconstruct scaled diagrams for examination and analysis. The use of cellular telephones and other electronic devices potentially causing a crash is always considered and investigated, with the assistance of the High -Tech Crimes Unit.



D. ECONOMIC CRIMES / INSURANCE FRAUD UNITS (ECU)

The Prosecutor's Office currently has two full time detectives assigned to investigate any white-collar, financial crime and allegations of insurance fraud. In general, the ECU reviews and investigates crimes regarding traditional theft and fraud related financial cases, identity theft issues and insurance fraud related thefts. ECU may receive complaints that are directly reported or referred by any of the Municipal agencies seeking assistance. The ECU spends a considerable amount of time fielding consumer complaints and evaluating those for proper resolution by the Prosecutor. The ECU works closely with the various State, Federal and Municipal Police Departments, on cases referred due to their complexity, the investigative man-hours involved or because they may be multi-jurisdictional in nature. ECU's investigations are time-consuming, requiring the collection and detailed review of a myriad of financial records from multiple sources as well as multiple interviews, not usually handled in smaller agencies. Because of the demographics of Cape May County, we see a high volume of deceptive construction / builder complaints, frauds against senior citizens via the mail or phone, Internet frauds, identity theft and property related insurance fraud. To keep abreast of developments in our field and ever-changing theft patterns the Internet has brought with it, it is imperative that the ECU attends local Bank association meetings and theft related seminars to maintain contacts and networking on ways of protecting against the array of frauds County residents may be exposed to.

2021 Significant Cases - Insurance Fraud

Administrative personnel of a local nursing home reported that one of their employees, a Licensed Practical Nurse (LPN), was suspected of purposely ordering prescriptions such as Oxycodone 5mg/10 mg, Percocet 5mg/7.5 mg, Fentanyl 12/50 microgram patches, and Lorazepam 1mg incorrectly into their system so that she could then enter it into the "Controlled Substance Log Book" and mark it for destruction, and then subsequently keep the excess prescriptions for herself.

In order to properly dispose of the medications, the nurse approving the destruction would require an additional employee verification signature. Several interviews were conducted of the employees whose initials were used for verification and all stated that they did not authorize the subject destructions and that the signature initials had been forged. According to the administrative staff, there had also been a significant increase in incorrect prescription orders for that employee as well.

Further investigation revealed that there were twenty-three (23) separate occasions where the insurance company covered the cost of this scheme before the employee, Allison Aaron, was arrested and charged with Assuming False Identity in the 2nd degree, Theft By Unlawful Taking 3rd degree, Theft By Deception 3rd degree, and Health Care Claims Fraud 2nd degree. Alison Aaron is currently awaiting trial.

2021 Significant Cases – Insurance Fraud

In October 2021, the CMCPO conducted an arrest of a Sicklerville, NJ resident who attempted to de-winterize his boat in the spring following winter storage at the Cape Shores Resort in Rio Grande, NJ. The boat owner did not have proper knowledge of how to successfully attempt to de-winterize the boat and unintentionally sparked a fire in the engine, causing \$18,500 in damage. He then continued a series of fabricated stories to the police and to the insurance company to get the damage covered by his policy. Progressive Insurance hired an independent contracted engineer to investigate the fire and it was determined that the damage could not have happened the way that the boat owner had claimed; therefore, the claim was denied payment, but the case was referred to the Office of the Insurance Fraud Prosecutor for criminal charges.

After additional investigation conducted by the CMCPO, Vincent Russo was arrested on October 28, 2021 and charged with Insurance Fraud in the 3rd degree which was handed a true bill by a Cape May County Grand Jury on December 7, 2021.

III. SPECIAL VICTIMS SECTION –

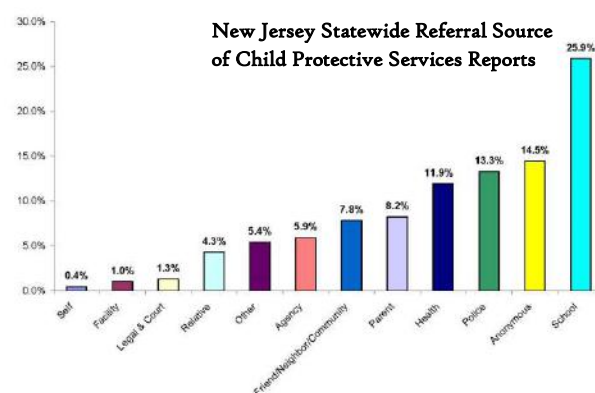
A Lieutenant of County Detectives is responsible for supervising the Special Victims Section. Under Special Victims, reporting to the Lieutenant is one Detective Sergeant, supervising six Detectives.



A. SPECIAL VICTIMS UNIT

The Special Victims Unit (SVU) is responsible for handling sexual assault investigations, for adult and child victims, child abuse investigations, Human Trafficking investigations and Megan's Law. The Special Victims Unit includes six Detectives, supervised by a Sergeant, who is overseen by a Lieutenant. Two Assistant Prosecutors are assigned to specifically handle adult suspect sexual assault and child abuse prosecutions. There is also an additional Assistant Prosecutor assigned to handle juvenile suspect sexual assault and child abuse prosecutions. The detectives within the unit work closely with the Assistant Prosecutors on each investigation. Each member of the Special Victims Unit is specially trained to conduct these types of investigations. Child First/Finding Words of New Jersey, is a training all detectives and assistant prosecutors within the unit have attended, which teaches the proper way to interview children as well as prepare them for court. With each investigation, detectives from the Special Victims Unit work in conjunction with a member of the local police department/State Police.

All child abuse investigations, to include sexual physical abuse and neglect, use a multi-approach. The Multi-Disciplinary Team (MDT) to coordinate services to child abuse victims. approach, a maximum amount of information is from victims and their families with a minimum trauma to the child victim. The Multi-Team includes Law Enforcement, from both the Prosecutor's Office as well as the Local Police Assistant Prosecutors, Victim Witness Advocates, Child Protection and Permanency (DCP&P) mental health and medical service providers. The Disciplinary Team is coordinated by an Agent of the Cape May County Prosecutors Office. The MDT Coordinator is responsible for receiving new child abuse referrals, setting up interviews of children, as well as coordinating MDT meetings. All child interviews are conducted at the Cape May County Prosecutor's Office Victim/Witness Office. Located within the office is a child-friendly interview room with observation area, pleasant waiting area, and a meeting room.



abuse, disciplinary was created Using this gathered amount of Disciplinary County Department, Division of workers, Multi-

According to the Division of Child Protection & Permanency (DCP&P), Cape May County rates as one of the highest Counties for reported child abuse per capita. Over the last few years, the number of child abuse referrals has declined, nevertheless there has been an increase in the percentage of child abuse referrals that resulted in criminal

prosecution. In 2021, the number of cases received from DCP&P was approximately 835. Not all referrals received by DCP&P are criminal in nature, but when they are, they are referred to the Prosecutor's Office.

Undoubtedly, children have become more of a target than ever before, due in part to the extensive and increasing use of electronic devices, such as computers and cellular telephones. The Special Victims Unit works side by side with the High Technology Crimes Unit to investigate the above listed crimes. More recently, the Cape May County Prosecutor's Office Special Victims Unit and High Technology Crimes Unit have assisted in handling Invasion of Privacy investigations stemming from "sexting" amongst individuals, to include juveniles. "Sexting" is a term used when inappropriate photographs are sent, most commonly through text messaging, but through any electronic communication. "Sexting" is seen occurring with school age juveniles, and when an inappropriate photograph is distributed of a juvenile, this is a crime.

1. MEGAN'S LAW UNIT

One detective within the Special Victims Unit is tasked with the enforcement of Megan's Law sexual offender registration in Cape May County. The purpose of the sexual offender registration enforcement is to keep up-to-date information on each individual sex offender. Information obtained includes, but is not limited to, address, demographic information, physical characteristics, vehicle(s) used, and contact information. Investigative staff utilizes the statewide database known as Offender Watch to enter the information on sex offenders. With 202 registered sex offenders in the county, investigative staff working with local law enforcement are responsible for verifying where these offenders are residing, as well as charge any offenders that do not comply with registration requirements and/or court orders. The proactive enforcement that is conducted by detectives proves to be essential in maintaining the cooperation with registered sex offenders.

2. CAPE MAY COUNTY SEXUAL ASSAULT RESPONSE TEAM (SART)

The Special Victims Unit, as well as the local municipalities within the county, is fortunate to be able to utilize the Cape May County Sexual Assault Response Team (SART) for assistance with sexual assault investigation. Law enforcement officers within the county are trained by the Cape May County SART Coordinator on the proper procedures to follow when activating SART. SART is activated when an allegation of sexual assault, adult or child, is reported. A Forensic Nurse Examiner will respond to the Cape Regional Medical Center along with a trained volunteer from the Coalition Against Rape and Abuse (CARA). The Forensic Nurse Examiner will conduct a medical forensic examination at the hospital, utilizing a Sexual Assault Forensic Exam (SAFE) kit for evidence collection. Upon completion, the SAFE kit will be released to the assigned law enforcement officer to the investigation. The combined effort with law enforcement and SART has proven to be beneficial to the prosecution of numerous sexual assault investigations.



3. CHILD ADVOCACY CENTER

On December 20, 2019, the Cape May County Prosecutor's Office was awarded the Child Advocacy Development Grant-Capital to develop a free-standing Child Advocacy Center. The County of Cape May Board of Chosen Freeholders purchased a two-acre property, located at 372 Court House-South Dennis Road, Cape May Court House, New Jersey 08210 which will serve as the future site for the free-standing Child Advocacy Center, solely devoted to the multi-disciplinary response to allegations of child abuse. The County of Cape May currently developed a free-standing residence as the Child Advocacy Center to provide a Child-Focused Setting that is comfortable, private, and both physically and psychologically safe, for our diverse population of children and their families. This Advocacy Center is scheduled to open August 2022.

The Special Victims Section is also responsible for managing a specialized focus in Human Trafficking, as well as coordinating the Cape May County Child Abduction Response Team.

4. HUMAN TRAFFICKING

The Human Trafficking investigations are handled by members of the Special Victims Unit. As per Attorney General Law Enforcement Directive 2012-2, each County is required to

have at least one Detective and at least one Assistant Prosecutor to serve as the Human Trafficking Liaisons. Cape May County is comprised of an Assistant Prosecutor, a Sergeant of Detectives, and one Detective who are specially trained to identify and investigate potential human trafficking and act as the Human Trafficking Liaisons. Human trafficking often involves the crimes of forced labor, child sexual trafficking and forced prostitution. The Human Trafficking Liaison's responsibilities are to promptly and thoroughly investigate possible violations of human trafficking, and ensure that all investigative leads are pursued and coordinated with the State Human Trafficking Task Force.



5. CHILD ABDUCTION RESPONSE TEAM –

The purpose of the Cape May County Child Abduction Response Team, or CART is to establish an inter-agency Child Abduction Response Team that will respond to abducted/missing child investigations. Pursuant to the AG Law Enforcement Directive No. 2008-4, each of the County Prosecutor's Offices in New Jersey has two designated individuals to serve as Child Abduction Response Team (CART) leaders. CART leaders, exercising the authority of the County Prosecutor, shall oversee all missing child investigations in Cape May County.



Criteria for CART Notification

1. The report of a missing child 13 years of age or younger, regardless of circumstances.
2. The abduction of a minor (under the age of 18) or;
3. The abduction of a minor child (under the age of 18) within endangerment circumstances. These endangerment circumstances must clearly be articulated to the CART Team Leaders.
4. Any other abduction or missing child investigation that requires immediate response in order to protect the well being of the child. All incidents at this level shall require the approval of the CART Team Leader.

2021 Significant Cases - Special Victims Unit

In February 2021, the Cape May County Prosecutor's Office received a report regarding a nineteen (19) year old female while she was a student at Ocean City High School was sexually assaulted by an Ocean City High Teacher. An investigation was initiated, and the nineteen (19) year old female disclosed while she was a student, a teacher had forced her to perform fellatio on the teacher. The teacher was subsequently charged with two (2) counts of Sexual Assault, Endangering the Welfare of a Child, Official Misconduct, and Sexual Contact.

2021 Significant Cases - Special Victims Unit

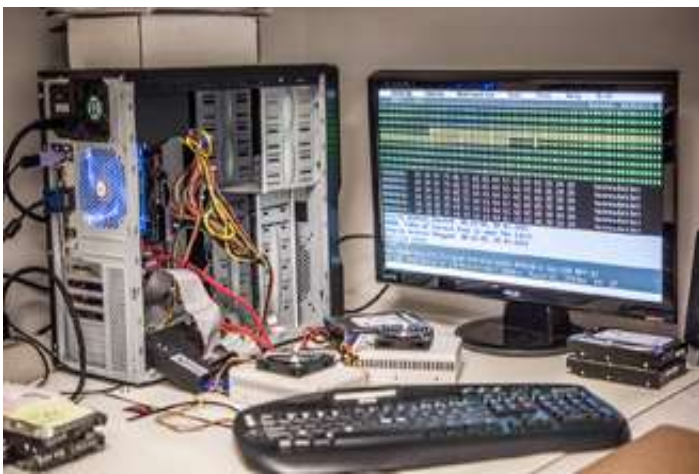
In February of 2021, the Division of Child Protection and Permanency received a referral of physical abuse of two five (5) year old brothers by their parents. An investigation was initiated by members of the Cape May County Prosecutor's Office. The five (5) year old brothers were interviewed and disclosed physical abuse by both parents.

Both parents were interviewed and admitted to physically assaulting the kids. As a result of this investigation, the mother was charged with Endangering the Welfare of a Child, a crime of the second degree, two counts of Aggravated Assault, a crime of the third degree, one count of Possession of a Weapon for an Unlawful Purpose, a crime of the third degree. The father was charged with two counts of Endangering the Welfare of a Child, two counts of Aggravated Assault, and Possession of a Weapon for an Unlawful Purpose.

B. HIGH TECHNOLOGY CRIMES UNIT

A Lieutenant of County Detectives is responsible for supervising the High Technology Crimes Unit (HTCU). Under HTCU, reporting to the Lieutenant is one Detective Sergeant, supervising four Detectives and one support agent.

HIGH TECHNOLOGY CRIMES UNIT



Technology related crimes are a major threat now. Scammers, hackers, thieves, and pedophiles are well versed in utilizing technology or technological devices in order to commit their act(s). This creates a great challenge for investigators to remain a step ahead of the criminals in this technological world. In response, Prosecutor Sutherland has allocated ample resources in the Cape May County Prosecutor's Office in order to provide this assistance which is so desperately needed by local law enforcement. The Prosecutor's Office's High Technology Crimes Unit (HTCU) currently has four (4) Detectives who are overseen by one (1) Detective Sergeant. The mission of the HTCU is the complete investigation, interdiction and prosecution of all crimes in the County of Cape May which involve computers, cellular phones, or other forms of recent advances in technology. In addition, the HTCU supports other units within the agency, and throughout the County, by providing technical assistance in other crimes involving electronic data and communications, such as, homicides, narcotics activity, aggravated assaults, sexual assaults, and financial crimes.

Since formation of the Unit, HTCU personnel have obtained hundreds of hours of specialized training in the field of computer crimes and the techniques for following the electronic "fingerprints" left by the perpetrators. The unit utilizes state of the art equipment in order to perform these forensic duties and recover the relevant evidence. Detectives are also specially trained in examination of mobile devices, the performance of network intrusions investigations, and child exploitation cases. The unit then prepares these investigations, in coordination with an Assistant Prosecutor, for prosecution in a Courtroom setting.

Four (4) Detectives in this unit also are assigned to the New Jersey State Police, Internet Crimes Against Children (ICAC) Task Force. This task force combats those offenders that utilize the internet in order to exploit or prey on young children. This HTCUC, in conjunction with the ICAC task force, has executed numerous search warrants and arrested scores of child predators in Cape May County, New Jersey. The HTCUC and ICAC missions encompasses forensic and investigative components, training and technical assistance, victim services, and community education.

One (1) Detective in this unit is a member of the New Jersey State Police, Cyber Terrorism Task Force. The mission of this task force is to conduct and assist in investigations where computers, networks, telecommunication devices, and other technological instruments are the vehicle or target for the commission of criminal acts against network resources critical to the function of corporate or government entities.

Two (2) members of this unit are also a member of the United States Secret Service, Philadelphia Area Electronic Crimes Task Force (PAECTF). This task force is an alliance of federal/local law enforcement officers that jointly work to suppress electronic crimes. The relationship that the Cape May County Prosecutor's Office HTCUC has with the state and federal agencies is invaluable to both the unit and the members of the public.

Another aspect of the HTCUC is to provide training sessions for local law enforcement officers in order to prepare them to handle these investigations. This training is specifically designed to provide the patrol officers with the knowledge necessary to take custody of a suspect's computer or cellular phone in such a way as to not jeopardize crucial evidence. Even more importantly, this training emphasizes the many ways in which computer criminals install programs into their computers so that evidence can be destroyed. In addition, members of this unit provide education on internet scams, banking safety, and online identity theft to business organizations located within Cape May County.

Moving forward, the Cape May County Prosecutor's Office will continue to adapt to new technology and methods used to commit crimes using new and evolving electronic devices. Strong partnerships with the task forces referred to above and continued training will help us continue to combat these crimes and continue to arrest and prosecute those that are responsible for them.

ICAC Task Force
Internet Crimes Against Children

2021 Notable Cases- Possession and Distribution of Child Pornography

On February 4, 2021, a lengthy investigation was conducted in Wildwood, New Jersey as the result of over one hundred Child Pornography referrals to the Cape May County Prosecutor's Office from the National Center for Missing & Exploited Children. After some initial investigation, a suspect was located behind a boarding house in Wildwood. Several electronic items were seized for further forensic examination. During an interview, the suspect admitted to investigators possessing and viewing videos and photographs of child pornography.

After forensic examinations on the seized items, it was determined that Child Pornography was found on the items seized. Aubrey was charged with (2C:24-4B(5)Biii), Possession of Child Pornography, a crime of the third degree. The New Jersey State Police and Homeland Security Investigations assisted with this investigation.

2021 Notable Cases –Invasion of Privacy, Stalking, and Violation of Restraining Order

Cape May County Prosecutor's Office conducted a lengthy investigation into ongoing Violations of a Final Restraining Order, Invasion of Privacy, and Cyber Harassment from a variety of anonymous, overseas accounts. Cape May County Prosecutor's Office forensic experts were able to link these overseas accounts to a suspect in Cape May, NJ. On June 16, 2021, the Cape May County Prosecutor's Office (HTCU), and the Middle Township Police Department performed an operation connected with Cyber Harassment/Stalking out of Cape May, NJ.

As a result of this operation, electronic devices were seized and the suspect was ultimately charged with Cyber Harassment (2C:33-4.1), Invasion of Privacy (2C:14-9), Violation of FRO (2C:29-9b), Stalking (2C:12-10), and Identify Theft (2C:21-17a1). The Middle Township Police Department assisted with this investigation.

IV. COMMUNITY OUTREACH PROGRAM

A. PROSECUTOR'S COMMUNITY OUTREACH PROGRAMS & INITIATIVES

The Cape May Prosecutor's Office has long attempted to bridge gaps between law enforcement and the community and have designed, coordinated and implemented several outreach programs and initiatives to educate, inform, help and even solicit assistance from members of the community on common goals. Lieutenant Landis oversees several programs and initiatives for this purpose with the assistance of Cheryl Spaulding, Community Justice Coordinator.

1. CAPE MAY COUNTY VETERAN'S DIVERSION PROGRAM

The Veterans Diversion Program provides an opportunity for certain military veterans facing criminal charges to avoid prosecution through diversion. The program is available to any military veteran who is diagnosed with an Axis I mental/behavioral health disorder, and who is charged with an eligible offense. Pursuant to the statute, an eligible offense includes all non-violent petty-disorderly persons, disorderly persons as well as third and fourth degree crimes.

If accepted to participate in the program, veterans receive an individualized treatment plan as well as many additional conditions as part of their diversion plan. They are required to receive treatment, counseling, and participate in community-based veterans assistance programs. The goal is to provide participants with a solid foundation of support so that upon successful completion of their diversion, they are on a path to success.

During the program period, each applicant will actively participate in recommended treatment plans by the VA and abide to treatment and other conditions. The participants will meet monthly in Court before a Superior Court Judge. Upon successful completion of the program, the participants will graduate from the program in Superior Court during a small ceremony and issued a plaque and unique challenge coin signifying their successful participation in the program and their services to our Country. The Veterans Diversion program also attempts to link participants with veteran mentors from within Cape May County.

2. COMMUNITY OUTREACH PROGRAMS

The Cape May County Prosecutor's Office Community Outreach Initiative is committed to the ongoing and proactive communication efforts with our schools, neighborhoods, businesses and community based organizations within Cape May County and the Southern New Jersey region. It is the goal of the Prosecutor's Office to maintain the trust of all citizens in the County, and to sustain positive working relationships based upon open communication, focus, respect and equality. These efforts help build stronger working relationships between law enforcement and community residents.

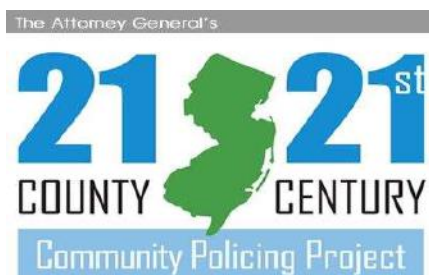
Community outreach is the responsibility of everyone in the Cape May County Prosecutor's Office, not just a select few, beginning with the leadership of the County Prosecutor and filtering throughout the entire agency. Employees of the Cape May County Prosecutor's Office have hundreds of thousands of contacts with community members each year, and by virtue of those contacts, each



employee has a role in the community outreach efforts of the Prosecutor's Office. The community outreach program is dedicated to preparing and providing up to date presentations to be presented to students and school staff, community organizations, law enforcement professionals, and members of the general public on sensitive and important topics such as; drug awareness and prevention, gang awareness, sexting, bullying, cyber bullying and general internet safety as well as financial crimes, domestic violence, victim advocacy, human trafficking, child abuse and sexual assault. The presentations are presented by members of the Cape May County Prosecutor's Office who have an expertise in these topics. The presentations assist individuals in the community by giving them up to date information to help become vigilant when faced with certain issues that have become major issues in our county.

Through education the Cape May County Prosecutor's Office has given the attendees and their families the tools for them to become more aware of the prevention steps, warning signs, and consequences that they would be able to share with their loved ones. By learning this valuable information, the community members learn how to keep their friends or loved ones from falling short of senseless tragedies, such as a drug related overdose. These presentations also create an open forum and a communication outlet between law enforcement and the community to help build their relationship.

As requested by the New Jersey Office of the Attorney General our office has continued the 21st Century - 21 County Community Policing Project, the Cape May County Prosecutors Office and the Community Outreach Division hosting several events to promote stronger police and community relations bring law enforcement and community stakeholders together to address the needs and concerns of the community. A few of the presentations included an Informational session on Juvenile Justice & strengthening trust between the community and law enforcement. This is important for the public to understand the system and mechanisms available to help divert juveniles away from the justice system and detention. Also presented to the community was the Red Flag Law. Extreme Risk Protective Order "ERPO" was enacted to help further prevent violence and allow law enforcement when deemed legally allowed to temporarily remove firearms from a potentially dangerous situation after gathering all the fact.



CAPE MAY COUNTY COALITION FOR A SAFE COMMUNITY



This coalition is a collaborative effort by a concerned group of citizens, public officers, law enforcement agencies, faith-based leaders, community college, school board officials and other organizations determined to take change the climate with the community for the better. The Coalition has taken a proactive approach in creating an atmosphere of cooperation, understanding and open communication between residents and law enforcement. The Coalition for a Safe Community is dedicated to improving and empowering residents of this County and helping provide the safest community for our children their families. The Cape May County Coalition for A Safe Community holds monthly meetings to discuss and review plans to bring the community together.

3. HOPE-ONE PROGRAM

The Cape May County Prosecutor's Office Community Outreach Unit, and its partners the Cape May County Department of Human Services, Cape Assist, ACENDA Integrated Health, Cape Addiction Recovery Services (CARES) and to discuss plans for a new approach at delivering help and hope in a unique way, blending law enforcement and social services into communities to address the ongoing drug epidemic. The Hope One program is centered around a mobile vehicle, intended to provide a comfortable, stigma free setting to promote the outreach program, to encourage personal contacts, and to effectively provide mobile and on-site services to individuals who have

had difficulty navigating the journey of accessing appropriate addiction services. The program's goal is to provide drug rehabilitation and counseling services to people prior to them having contact with law enforcement and the Criminal Justice System or worse, overdosing from these dangerous drugs. Hope One, staffed by a County Detective, licensed clinician and certified peer recovery specialist will travel periodically each month to locations throughout Cape May County and bring addiction services to persons in need. Hope One will be able to provide clients immediate access to services and treatment facilities, putting them on the road to recovery and wellness prior to having contact with law enforcement and even avoiding overdose, which sadly too often results in death. In addition, training for Naloxone / Narcan will be administered on site and kits will be provided to family members and friends of those suffering with opioid addiction upon completion of this training. The Public Defender's office has agreed to assist by addressing any outstanding warrants or other legal matters that may act as a perceived barrier to certain clients in need of recovery services.



CAPE MAY COUNTY HEALTHY COMMUNITY COALITION



The Coalition has three main focuses and is spear headed by Cape Assist in collaboration with many other county wide partners including the Cape May County Prosecutor's Office. These focuses include; change the way communities view alcohol, tobacco and drug abuse with the full support of our office and help. Assisting communities with prevention planning, providing skills, community resources and technical assistance to groups and implement programs and events. The coalition strides on strengthens our neighborhoods by increasing community attachment and encouraging partnerships between local organizations and residents. The Prosecutor's Office also helps and participates in the annual Peer Leadership Conference. Each year the conference has a theme - a day of learning, connecting, and sharing for Cape May

County youth!

PRIDE COMMITTEE OF CAPE MAY COUNTY

The Cape May County Prosecutor's Office works hand in hand with several entities such as Cape May County Office of Education, County Educators, Cape Assist, Cape May County Department of Human Services and the Sea Isle City School Board, who funds the committee. The committee strives to create awareness and educate the community and especially our school educators on the current epidemic of prescription drugs, opiate abuse and dangers linked to heroin use.

This is accomplished through many avenues including educational seminars and billboards as some examples. The program focuses on reducing the impact of Adverse Childhood Experiences (ACE's), which have a profound impact on future behavior of children.



4. DRUG TREATMENT DIVERSION PROGRAM

The Drug Treatment Diversion Program targets Defendants arrested and charged with 3rd Degree Possession of Heroin, Fentanyl, Carfentanyl or any combination thereof. After arrest, but prior to release, the arresting law enforcement agency must provide notification of this program to the Defendant, for their voluntary consideration. A Defendant will also be afforded up to 72 hours, after their arrest, to reconsider. Within this 72 hour period, following arrest, the program calls for a face-to-face interview with a Clinical Case manager to assist the Defendant in obtaining a drug treatment recommendation from a Drug Treatment Professional. To voluntarily participate in this Diversion Program, a Defendant must waive their right to a speedy trial; however, may seek the advice of counsel at any time. Defendants must undergo medical testing procedures and fully participate and successfully complete a recommended drug treatment protocol. Upon successful completion, following a period of approximately six months, the original eligible crime will be dismissed. However, if the Defendant fails to comply with the treatment recommendations, or engages in additional criminal activity, the State may dismiss the Defendant from the program and refer the matter to the Grand Jury for traditional prosecution. Understanding the nature and extent of addiction, this program may be utilized more than once if the Defendant is otherwise eligible and committed to seeking further treatment. With the implementation of this program, the Cape May County Prosecutor's Office is acting as a forerunner in the State of New Jersey with such an inventive concept.

V. GANGS, GUNS AND NARCOTICS BUREAU

A Lieutenant of County Detectives is responsible for supervising the Narcotics Unit, the Intelligence Unit and coordinating the Gangs-Guns-Narcotics Task Force. Reporting to the Lieutenant is one Sergeant, supervising Detectives, one grant-funded Detective, one support agent, and as many Officers and Detectives that are temporarily assigned to the Task Force from State and Local Law Enforcement Agencies.



POPPY, COCA and
MARIJUANA plants

four

A. GANGS, GUNS & NARCOTICS UNIT / TASK FORCE

The Gangs-Guns-Narcotics Task Force was created pursuant to the Attorney General's Statewide Narcotics Action Plan (SNAP) in October of 1987, which was revised in March of 1993, and referred to as (SNAP II Guidelines), providing guidelines for all Task Force operations. The Task Force is comprised of a group of specially trained investigators from the Cape May County Prosecutor's Office in the field of Narcotics detection and enforcement. This unit is staffed with a Lieutenant who oversees the day to day operations along with a Sergeant who supervises four surface Detectives, and in conjunction with funding through the Edward Byrne Memorial Justice Assistance Grant, one additional detective was assigned to the Task Force in strictly an undercover capacity. The grant positions afforded the Task Force a unique asset during the course of daily street operations in its ability to infiltrate criminal groups with sworn undercover police officers. Use of undercover police officers in criminal investigations is not only a primary strategic asset of the Task Force to infiltrate criminal networks, but further acted as an effective tactic for solid and efficient criminal prosecutions against these dealers who actually are proven to have sold narcotics directly to a police officer. Undercover officers are often called upon to assist federal law enforcement agencies with high-level narcotics investigations targeting such groups as localized organized crime, as well as cartel syndicates. Besides certification through the New Jersey Police Training Commission, these undercover specific positions were afforded benefits and high-level training programs; such as, Top Gun and Undercover Narcotics Investigation Training (U.N.I.T.) training. It should be noted that the Byrne Grant expired midyear, and it is currently unknown as to if the grant will be renewed in the future and if those positions will be filled.

Since the creation of the original "Strike Force", now Task Force, a true asset has been the support of local law enforcement agencies assigning municipal and state police officers to the Task Force for limited time frames, or during case-by-case specific operations. These officers supplement the Task Force and often are called upon to act in undercover capacities themselves. When they return to their respective agencies, those officers have earned valuable training and experience in surveillance, narcotics detection and enforcement, the use of confidential informants and funds, and the ability to apply for and execute Court orders and search warrants for the benefit of their own agencies and personnel. Those officers, who now act as liaisons between their agency and the Task Force, bring back their training and experiences and encourage fellow officers to be proactive and to share criminal intelligence communications between like-minded investigators who seek to maintain the safety and security of our communities.



The Task Force is the lead agency for gangs, guns and narcotics enforcement efforts within the County and regularly coordinates narcotics investigations with each of the respected municipalities within the County. The Task Force main objectives are to target repeat offenders and any person engaging in the manufacturing and distribution of narcotics, as well as to disrupt organized drug trafficking networks, while reducing the profit margin of these networks and the demand for these dangerous substances. Additionally, it is a priority to discourage all young people from illegal drug use and eliminate all presence of these drugs from our schools to protect the future of our children. All of the municipalities within the County routinely work hand and hand with the Task Force to help combat this illegal drug distribution and the Task Force frequently relies on each of these municipalities to identify local drug market locations and drug transportation corridors, which helps the Task Force in formulating a multijurisdictional plan of attack to target high drug crime areas. Narcotics cases are initiated through a wide variety of sources to include information received by State, Federal and Local agencies, the Crime Stoppers Tip Line, confidential informants, citizen complaints and individuals arrested for various offenses. The Task Force is available 24 hours a day, seven days a week.



The Prosecutor has assigned an Assistant Prosecutor solely dedicated to gangs, weapons, and narcotics cases to provide legal advice to the Task Force, as well all local municipalities and the State Police. As guidance and as a means of deconfliction, all Assistant Prosecutors initially review all Court Applications in Cape May County, prior to Judicial review. The Task Force Assistant Prosecutor works closely with Narcotics Commanders and the Intelligence Unit as an added means of deconfliction for case integrity and officer safety. This same Prosecutor, with their intimate knowledge and exposure to specific investigations, then prosecutes each case, later, in the Cape May County Superior Court.



The Task Force is also involved in the drug enforcement training and education of police officers. It hosts and provides instructors for in-service police training classes conducted at the Cape May County Police Academy, and with special training programs offered. Detectives from the Task Force are requested to train recruits in the Basic Course for Police Officers and in the Special Law Enforcement Officer (SLEO) Class II Basic Course for local drug trends and laws related to narcotics enforcement. The Task Force cooperates with the New Jersey Division of Criminal Justice, the New Jersey State Police and the County Narcotics Commander's Association of New Jersey by supporting and supplying faculty for the state's premier drug enforcement courses, such as, Top Gun, Drug Unit Supervisor's Training and Undercover Narcotics Investigation Training (U.N.I.T.) courses which are attended by law enforcement personnel throughout the country. Instructors in these programs are considered experts in their field and the Cape May County Gangs-Guns-Narcotics Task Force is a proud supporter of these elite training programs.

Members of the Task Force also participate in community outreach programs which are conducted in the County's schools, church groups and through civic groups and are dedicated to educating the community of the



dangers of narcotics available on the street causing a risk to the health and development of our children and citizens. Members of the Task Force often provide development awareness and prevention programs; specifically, a "PILLS TO HEROIN" presentation, in community organizations, church groups, civic clubs, and within schools in hopes of educating and improving quality of life.

Cocaine and Prescription Drugs are the more prevalent controlled dangerous substances distributed throughout Cape May County, as well as a unique resurgence of Methamphetamine. However, HEROIN has topped all other drugs seized in the County to astonishing levels, lending to the realization that Cape May County heroin users are growing, as is the increase of crime and social issues and problems that follow.



Heroin has had a significant presence amongst the drug subculture in existence in Cape May County. The timing and arrival of heroin was consistent with a national trend as distribution routes and practices by narcotics suppliers, sellers and organized crime extended their operations and control. Throughout this time, addiction increased, and the market became established. The economic principle of supply and demand is the driver of narcotics distributors seeking large profits. As should be known, heroin is a highly addictive, Schedule I controlled dangerous substance with currently no accepted medical use in the United States. Many who become addicted, maintain this high, and reverted to a cheaper, more readily available high found in heroin. Heroin's resurgence is linked in part, to its affordability. The average retail cost of each bag, in Cape May County is typically \$10.00 per bag. Ironically, that same single bag of heroin sold on the streets of Camden, New Jersey, will retail for approximately \$5.00, each. Therein lies the potential for high profits for selling drugs in Cape May County, despite the high-risk law enforcement interdiction efforts. The typical user of today consumes more than the addicts of only a decade ago, due to the increased purity levels and its availability on the streets. More significantly in Cape May County is the relatively recent and evident explosive rise of the heroin presence within the community, in both quantity and purity levels. Traditionally, the purity level of heroin ranged from 1% to 10%; however, over the past decade, heroin purity levels have climbed to dangerously high levels in the region, to approximately 68% purity. The national average is steady at 61%. As a result of the high purity level, heroin users are overdosing at a more frequent rate. To further stoke the flames of the epidemic, heroin dealers have been found to add Fentanyl into their mixture of heroin, to add to the potency and lethality. Fentanyl is a powerful narcotic that is approximately 80 to 100 times more potent than morphine, and 15 to 20 times more potent than heroin.

Except for some illicit marijuana growers, all narcotics are imported into Cape May County from other parts of the country. Philadelphia, Camden, Trenton, Newark, New York City and Atlantic City are considered "hot spots" for narcotics trafficking and distribution. With these geographic narcotic supply options available, local distributors can vary their supply routes based upon availability, costs and risk from law enforcement or competitors. It is the mission of the Gangs-Guns-Narcotics Task Force to stop the flow of narcotics into Cape May County; however, that mission continues to challenge law enforcement as the drug cartels plague the region with a constant influx of heroin. Proving the presence and rising trend of heroin into Cape May County, some of the heroin stamped packages seized by the Task Force are depicted below. Each represents a branding of heroin, like merchandise marketing in the business world.

2021 Narcotics Task Force Notable Case

During the month of June 2021, a narcotics investigation was opened into a mid-size narcotics distributor of Ecstasy. On June 15, 2021, a narcotics search warrant was executed at 142 Chestnut Street, Belleplain, New Jersey 08270. During the search, the following items were seized:

- Seven (7) Rifles and Shotguns
- One (1) handgun
- Seven (7) bottles of Oxycodone containing multiple tablets
- 200 partial tablets of Ecstasy (MDMA) and packaging material
- Approximately \$10,000 cash

The following subjects were arrested and charged with the following offenses:

Jared C Weygand (DOB:08/02/1994, SSN: 150-96-9768))

- 2C:35-5B(2), PWI to distribute Ecstasy (MDMA)
- 2C:35-10A(1), Possession of CDS / Ecstasy (MDMA)
- 2C:5-2A(1), Conspiracy to Distribute Ecstasy (MDMA)
- 2C:5-2A(1), Conspiracy to Possess Ecstasy (MDMA)
- 2C:29-29-3B(1), Hindering

David J. Weygand (DOB:08/01/1953, SSN: 140-46-6022)

- 2C:39-7B(1), Certain Person Not to Possess Firearms, Eight (8) counts
- 2C:35-10A(1), Possession of CDS / Ecstasy (MDMA)
- 2C:35-10A(1), Possession of CDS/ Oxycodone
- 2C:21-25A, Money Laundering
- 2C:35-5B(5), PWI to distribute Oxycodone
- 2C:35-5B(2), PWI to distribute Ecstasy (MDMA)
- 2C:39-4.1A, Possess firearm during course of a drug offense

S. Cramer-Weygand (DOB: 02/04/1964, SSN: 147-60-0005)

-2C:29-3A(3), Hindering

-2C:35-5B(5), PWI to distribute Oxycodone

-2C:35-5B(2), PWI to distribute Ecstasy (MDMA)

-2C:5-2A(1), Conspiracy to Distribute Ecstasy (MDMA)

-2C:5-2A(1), Conspiracy to Distribute Oxycodone

-2C:35-10A(1), Possession of CDS / Ecstasy (MDMA)

-2C:35-10A(1), Possession of CDS / Oxycodone

-2C:21-25A, Money Laundering



B. INTELLIGENCE UNIT

The Cape May County Prosecutor's Office Intelligence Unit was established in 2004, under the guidelines put forth by the New Jersey Attorney General. The Intelligence Unit operates following the frameworks of the intelligence cycle and the Intelligence-Led Policing model. The ultimate goal of these practices is to efficiently direct law enforcement resources towards the problems and places where they are needed and can result in the most positive outcomes. Those positive outcomes can include crime reduction, enhanced officer safety, increased quality of service to the public, better public relations, and higher quality investigative results.



The Intelligence Unit provides both tactical and strategic intelligence to assist decision makers and positively impact investigations within the CMCPO and all law enforcement agencies within the County and region.

Tactical intelligence is information that can be used to address a specific issue or threat. An unfortunately common example would be that of a spike in overdoses over a short period of time. In this situation, members of the Intelligence Unit will assist in the identification of the specific packaging associated with the drugs causing the overdoses and the investigative targets linked to the drugs. These results are accomplished through research of real-time data bases, cooperation with the CMCPO forensic laboratory, generation of confidential sources, and communication with local law enforcement officers. Information gleaned is then shared with all the stakeholders (in keeping with the practices of the intelligence cycle) to decrease the likelihood of subsequent overdoses through directed investigation and sharing of information.

Strategic intelligence is information that can be used to inform policy, enhance planning, and intensify efficiency. The intelligence Unit has been integral in providing strategic intelligence to law enforcement managers regarding large scale public events such as concerts and sports events, as well as planned and potential protests. Over the last year an emerging trend the unit has been addressing involves social media-driven gatherings with potential for generation of disturbances and threats to public and officer safety. These events are often referred to as “Pop Ups” or “Takeovers.” Already during the warmer months of 2022 some such events have culminated in mass disturbances in NJ jurisdictions. The intelligence Unit maintains a working relationship with the New Jersey Office of Homeland Security and Preparedness (OHSP). This partnership has enhanced information gathering and sharing regarding large scale public events in Cape May County, partially through the OHSP *Trip Wire Intuitive*. OHSP describes the Trip Wire Intuitive as “an outreach initiative designed to reach private sector merchants at hotels, malls, gun shops, and other venues.” CMCPO Detectives have regularly been assigned to work with Detectives from the NJ OHSP and local police departments to canvass business in advance of large-scale public events. These efforts enhance awareness regarding attendance numbers and other issues while strengthening the relationship between law enforcement and the business community. Intelligence Unit members have been an essential component in identifying and monitoring both planned and potential protests, as well as social media-driven gatherings as mentioned above. In part, this is accomplished through monitoring of opensource internet outlets and constant updates to decision makers. The information gathered can then be used to dictate utilization of resources such as deployable surveillance camera trailers and mobile Automated License Plate Readers (ALPR), as well as personnel.



Intelligence Unit Detectives are part of the team that maintains, deploys, and recovers the above noted and pictured mobile technology assists. Intelligence Unit and High Technology Crimes Unit members work together to assist local police departments in the utilization of these assists. Intelligence Unit personnel regularly serve as the points of contact for investigative searches of the databases associated with the noted mobile technology assists.

One function that serves to meet the goals of both tactical and strategic intelligence is the Unit's facilitation of the CMCPO's participation in statewide and national overdose tracking. This is accomplished through *OD Mapping* (administered by the High Intensity Drug Trafficking Area Program Drug Monitoring Initiative). Unit personnel enter information into the system and work to ensure compliance with OD Mapping missions by local police agencies. Unit personnel regularly review bulletins released by the Drug Monitoring Initiative and attend meetings regarding drug trends and emerging information regarding dangerous illicit drugs. For instance, the evolving threat posed by the drug Xylazine, a drug used in veterinary medicine as a sedative. Xylazine is increasingly being found in doses of heroin, analyzed post-seizure by law enforcement. Xylazine is suspected to increase the likelihood of overdose by the end user and has been found in drug seizures within Cape May County.

Included within the mission of the Intelligence Unit is the cultivation and employment of confidential sources of information. These sources are developed through multiple means. Examples include interviews of suspects and witnesses and building of relationships with anonymous citizen tipsters. These confidential sources provide a vital conduit of information to the CMCPO. Information is regularly passed to other units of the CMCPO and local and federal law enforcement partners. Intelligence Unit Detectives maintain a close working relationship with Cape May County Sheriff's Office Investigators. This relationship results in the identification of new potential confidential sources.

As law enforcement has continued to leverage technology in communicating with the population they serve, new platforms for citizens to submit information are increasingly being employed. Intelligence Unit members are the primary personnel assigned to interact with citizens after they submit information. Unit members have been able to glean information from tipsters during follow up conversations that has assisted with investigations that have led to arrests.



Members of the Intelligence Unit maintain access to multiple databases, both government maintained, and fee-for-service based. Unit members regularly assist other investigative staff with search of these databases to further investigations.

The Intelligence Unit assists the Gangs-Guns-Narcotics Task Force (GGNTF), as well as state and local agencies in targeting illicit drug distribution, from street level dealers to mid and upper-level suppliers. Operation Yo-Yo serves as an example of this inter-unit operability, as well as partnership with law enforcement agencies from the local to federal level. During Operation Yo-Yo, Intelligence Unit members supervised squads carrying out physical and electronic surveillance, lesioned with local and federal law enforcement partners, located and arrested investigative targets, and assisted with execution of search warrants.

Since its inception, the Intelligence Unit has been engaged in identifying criminal groups operating within Cape May County and outlying jurisdictions. These criminal groups can include a “stick up crew” of three to four criminal actors conducting robberies of other known criminals, drug trafficking groups with international connections, or nationally recognized criminal gangs such as the Pagans outlaw motorcycle gang. All examples have been encountered within Cape May County. Unit members maintain working relationships with subject matter experts and gang-focused law enforcement groups to maintain awareness of trends and issues that may impact our jurisdiction. These partnerships also aid in identifying Cape May County based gang members.

The Intelligence Unit maintains a messaging system to disseminate police information quickly to local and regional police networks. These messages are essential for officer safety and quickly disseminating investigative leads and inquiries.

The Unit continues to work closely with the Real Time Crime Center South (RTCCS), which is a State Police run sub-unit of the Regional Operations Intelligence Center, focused on the southern six counties of NJ. The Unit Detectives serve as liaisons between municipal agencies and state assets, coordinated through the RTCCS. The RTCCS provides access to statewide ALPR systems, state correctional information, analytical assets and continues to be a valuable asset to law enforcement in Cape May County. Over the last year NJ has experienced an increase in motor vehicle thefts. Several jurisdictions in Cape May County have experienced this increase. Investigative resources available through the Unit’s relationship with the RTCCS have increased the efficacy of investigations into the thefts and enhanced officer safety in the process.

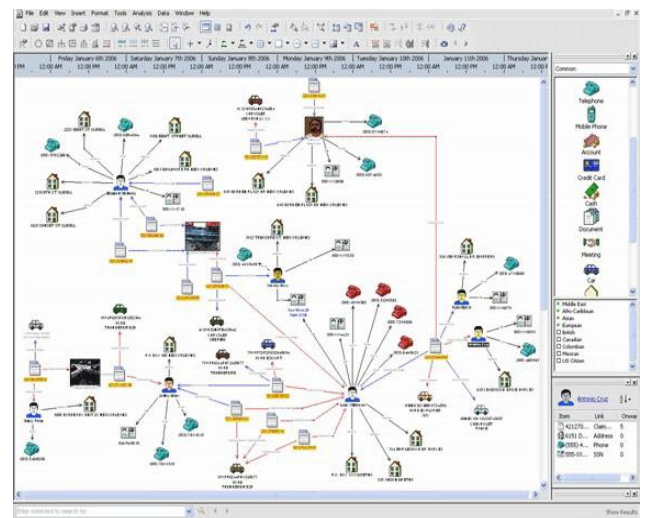
Intelligence Unit Detectives work closely with the Cape May County Counter Terrorism Coordinator and NJ OHSP members regarding protection of critical infostructure, government assets, local military facilities, and school buildings. During the last year, Unit members collaborated with both the Cape May County Counter Terrorism Coordinator and NJ OHSP investigators regarding multiple suspicious incidents at/near local military facilities, the Cape May County Superior Court, and several schools.

Unit members attend regional information sharing meetings to maintain regional situational awareness and share locally sourced information. Attendance of these meetings strengthens existing professional relationships and builds new connections.

Intelligence Unit personnel maintain membership to several information distribution lists that are utilized to disseminate intelligence products published by law enforcement at all levels of jurisdiction. Daily review of these publications ensures the Unit is up to date regarding evolving threats, emerging criminal trends, and potential new targets for investigation.



The Intelligence Unit manages a secure web-based Intelligence Database, in which is entered all relevant information gained during the activities outlined above. Unit members ensure compliance with the federal guidelines on Intelligence Database management, 28 CFR Part 23. This database is also used by all local law enforcement agencies to store criminal intelligence, adding to the collective goals of Intelligence Led Policing. Unit members are responsible for ensuring any reports entered by local law enforcement agencies meet federal guidelines. The system can be leveraged to analyze links between persons, locations, vehicles, communication devices, and other relevant facets of investigations. The database is critical to state-wide information sharing. The same system is used throughout NJ by agencies at all levels of jurisdiction. Effective use of the database has resulted in many success stories throughout our region. The Cape May County Intelligence Database contains approximately 5,000 records. This number is constantly fluid due to the entry of new records and purging of records in accordance with the provisions of 28 CFR Part 23.



The Unit continues to strive to meet the challenges posed by the ever-growing trend of the “homegrown violent extremist” (HVE). The currently accepted definition of a homegrown violent extremist can be summarized as; a citizen who encourages, endorses, provides support to, or carries out a violent criminal act to achieve political, ideological, religious, social, or economic goals. On June 7th, 2022, the U.S. Department of Homeland Security issued a bulletin stating in part “we continue to assess that the primary threat of mass casualty violence in the United States stems from lone offenders and small groups motivated by a range of ideological beliefs and/or personal grievances.” Addressing the threats posed by emerging HVEs is a dynamic challenge. Often investigators face a plethora of Constitutional issues and privacy related factors that must be respected and properly addressed, as well as mental health concerns sometimes being evident in subjects showing indications of HVE activity. Unit members have successfully collaborated with other members of the law enforcement community to address potential HVE threats in Cape May County and the surrounding region.

VI. SPECIAL OPERATIONS SECTION -

The Special Operations and Planning Division is supervised by a Detective Sergeant, overseeing one Detective and two Support Agents. The Cape May Prosecutor's Office has knowledgeable, qualified, experienced and often fully-certified personnel who specialize in various specialized units, groups and initiatives for the betterment of Cape May County residents, while continuing with their primary responsibilities. The Unit Leader is responsible to coordinate assistance to the State, County and municipalities in responding to incidents involving terrorism, homeland security, domestic preparedness. Besides Special Operations, this Section also oversees the Office's Fugitive Unit.

A. FUGITIVE UNIT

The Fugitive Unit consists of one Agent, responsible for the processing, on average, of thirty to forty Superior Court Bench Warrants per week. This amount has increased as compared to past years. There is an average of over five-hundred active fugitives that failed to appear being sought by the Cape May County Prosecutor's Office. In order to locate these offenders, the Fugitive Unit conducts investigations in order to identify the location of these offenders. The Unit works closely with State and Federal Fugitive Task Force officers conducting domestic fugitive investigations. One tool utilized in the search for fugitives is the National Crime Information Center computerized database (NCIC). The Federal Bureau of Investigation mandates that warrants be entered into NCIC within 72 hours of issuance. Unit personnel must conduct a complete background investigation on each of these defendants, enter the offender's personal identifiers into the record, and conduct the proper notifications once the information has been entered. Information is constantly updated, and the warrant must be removed from the system when the warrant is executed or rescinded.



Besides compiling and reporting on the Agency's Uniform Crime Reporting (UCR) criminal statistics to the FBI, the Fugitive Unit Agent also acts as the Agency Terminal Agency Coordinator, or TAC Officer, responsible for the user management and internal auditing of the NCIC and State Police databases available.

In 2021, the Cape May County Superior Court issued 468 Pre-Indictable Superior Court Bench Warrants, showing an increase of 328 from 2020. The Fugitive Unit executed 233 Bench Warrants from the arrest of the defendants. Bench Warrants rescinded by the Court were totaled at 118.

The Fugitive Unit is also responsible for the safe transportation of fugitives arrested outside the State of New Jersey pursuant to the Uniform Criminal Extradition Act. When an out-of-state law enforcement agency arrests a fugitive, unit personnel track the out-of-state court procedure to determine if the fugitive has waived extradition in order to voluntarily return to the State of New Jersey. If the fugitive refuses to waive extradition, unit personnel are required to apply for a Governor's Warrant ordering the return of the fugitive to the State of New Jersey. Taking up to ninety days to complete, detectives must then travel out-of-state to take custody of the fugitive and lodge him/her in the appropriate correctional facility. If the fugitive is serving a period of incarceration in the other State, the fugitive must be returned through the Interstate Agreement on Detainers requiring that detectives must not only transport the fugitive to New Jersey, but then return that person to the out-of-state correctional facility. The transport of these fugitives is a shared responsibility of all of the detectives in all of the investigative units.

In 2021, the Fugitive Unit conducted 23 extraditions for prisoners captured outside the State of New Jersey, down 15% from 2020. 18 of the 23 extraditions were directly escorted by Cape May County Prosecutor's Office personnel during regular assignment hours. The remaining 5 were escorted by a private contractor at a total cost of \$26,107.10, up from the \$7,166.75 spent in 2020. Fees were up as a result Covid-19, where most private transports were via Air.

B. SPECIAL OPERATIONS & PLANNING UNIT

The Special Operations Division is responsible for an “all hazards” approach in responding to, coordinating and planning for all major law enforcement responses to critical incidents; which include, active shooter incidents, hostage or barricaded persons events, large-scale criminal investigations, multi-agency operations, mass gathering public events, terrorism, and weather emergencies. In addition to response, the Division is responsible for the coordination of Active Shooter training for Cape May County Schools, law enforcement personnel, and also members of the Private Sector. The Special Operations Division directly assists the Prosecutor with County Working Group initiatives, as well as Prosecutor-led programs and initiatives.



foot emergency patrol vessel.

The Special Operations Division calls upon a select group of experienced and knowledgeable Detectives in all matters of planning, coordinating and managing homeland security and domestic preparedness, training operations, tactical emergency situations, and intelligence gathering operations; especially, those that involve short-term field command post and communications operations. The Mobile Command Unit is stationed within this Division.

The Special Operations & Planning Section is home to the Cape May County Critical Infrastructure Coordinator(CIC), who is an experienced Agent with a mission to liaison and coordinate with the County’s public and private sectors, perform threat assessments and provide expertise and guidance in the formulation of emergency plans. The CIC currently oversees the Maritime Security & Response Unit, consisting of a 29





C. CRITICAL INFRASTRUCTURE COORDINATOR (CIC):



The Critical Infrastructure Coordinator performs activities to continually identify and protect critical infrastructures and key resources within the County in accordance with established guidelines set forth by the New Jersey Office of Homeland Security and Preparedness (NJOHSP). Cape May County has over a dozen state-level assets that have been identified which meet enhanced criteria based upon the consequences of a loss or the particular capabilities of the facility.



In addition, there are countless special interest sites such as schools, houses of worship, airports, marinas, and storage facilities to name only a few that are identified and evaluated based upon the current threat profile. As an example, due to continued increases in violence at houses of worship, active shooter training and site security assessments visits are being conducted on houses of worship on an ongoing basis throughout Cape May County. These security assessment visits involve a site survey being completed, which consists of a comprehensive list of information to be completed by both the facility manager and law enforcement pertaining to emergency contacts, security, training, communications, building operation, evacuations, staging, floor plans, photographs, etc. The Critical Infrastructure Coordinator performs activities to continually identify and protect critical infrastructures and key resources within the County in accordance with established guidelines set forth by the New Jersey Office of Homeland Security and Preparedness (NJOHSP).

In addition to assessments, the Coordinator, along with NJOHSP provides Terrorism Prevention Awareness Tips (Tripwires) and “Secure the Shore” presentations advising the public on how to identify possible suspicious activities and actions to take as well as contact information to heighten the public’s awareness to stay alert and *“If you see something, say something.”*



The Coordinator is a member of the County Working Group, created to develop needs assessments as part of the State Homeland Security Grant Program as well as a coordinated response between multi-disciplines to critical incidents that occur in Cape May County. One example of this would be the continued efforts to establish a “Rescue Task Force” within Cape May County. This initiative utilized NJOHSP grant funding to purchase ballistic vests and helmets for emergency medical personnel who respond to mass casualty incidents and provide rapid emergency medical care to critically wounded victims within designated “warm zones”. (The Coordinator is required to attend training and frequent briefings by NJOHSP pertaining to critical infrastructures and the current threat posture

D. ALL HAZARDS PLANNING UNIT

Cape May County Prosecutor's Office and law enforcement face an additional, large-scale potential emergency from hurricanes every year during hurricane season. The County is a peninsula bordered by the Atlantic Ocean and Delaware Bay. Tourism; including, day visitors, brings nearly a million people into the County on good weather weekends throughout the seasons. A category III or IV hurricane strike would flood the County with a potential storm surge of 6' to 16' leaving only a small central corridor in the County that would not be affected. Approximately 80% of the County could be underwater. All the barrier island communities and bay side towns would be affected like the Gulf coast during Hurricanes Katrina and Rita in 2005, and Hurricanes Irene and Sandy which devastated New Jersey.



In July 2006, the Cape May County Prosecutor's Office established a Continuity of Operations Plan (COOP) in coordination with Cape May County and the Office of Emergency Management to develop, implement and maintain a plan to facilitate the performance of essential law enforcement functions during an anticipated or unanticipated emergency that disrupts the normal operations of the Prosecutor's Office. Of particular concern was the potential for severe flooding in the event of a hurricane with significant storm surge since the Prosecutor's Office is located east of the Garden State Parkway in a flood plain.



The Prosecutor and County Chiefs of Police developed the original Garden State Parkway Reverse Lane Plan that was improved over time and adopted by the New Jersey State Police. The Reverse Lane Plan is an essential means to accomplish a mass-evacuation of residents and visitors by facilitating vehicular travel, northbound on the Garden State Parkway, in both lanes. The Prosecutor's Office works closely with the County OEM.



The education, preparation and training of police officers and the community outreach programs to alert the public in emergencies, are not traditionally thought of as law enforcement duties, but they clearly are. Performing these duties requires specially trained and educated personnel in the Prosecutor's Office who devote substantial time and attention to these efforts.

E. HEALTH AND BIO-TERRORISM EMERGENCIES

Public Health emergencies pose new and special challenges for law enforcement. Whether the threat is a manmade terrorist attack or a naturally occurring flu pandemic such as swine flu or bird flu law enforcement will have a large role. Law enforcement's role may include enforcing public health orders (e.g. quarantines or travel restrictions), securing contaminated areas and health care centers, controlling crowds, investigating scenes of suspected biological terrorism and protecting vaccine stockpiles. Under the N.J. Criminal Justice System, the County Prosecutor's Office is the chief law enforcement agency in each county. The Prosecutor's Office coordinates and supervises planning and response for these incidents by law enforcement.



F. CRIME SCENE INVESTIGATIONS UNIT

The Crime Scene Unit (CSU) of the Cape May County Prosecutor's Office is staffed by five detectives who are responsible for the processing of crime scenes at all homicides, aggravated assaults, sexual assaults, shootings, burglaries, robberies, fatal fires, suicides and any death investigation where the circumstances of the death are questioned or unusual. Additionally, the Crime Scene Unit will respond to any investigation at the request of a local law enforcement agency. The processing of a crime scene will minimally include the locating, collecting and securing of physical evidence, photography and scene diagramming. Depending on the crime being investigated, the evidence to be collected may include items such as; weapons, clothing, latent prints, hairs, fibers as well as blood and other bodily fluid. In the case of a death investigation, members of the Crime Scene Unit will attend the autopsy of the decedent in order to document any injuries and collect addition evidence. All evidence is collected in accordance with the New Jersey State Police Evidence Manuel. At the conclusion of the scene and autopsy portion of the investigation the members of the Crime Scene Unit are responsible for the further processing of evidence and for submitting items of evidence to the New Jersey State Police Forensic Laboratory for additional testing and analysis.



G. FATAL CRASH INVESTIGATION UNIT

Each fatal or serious motor vehicle crash has the potential to become a criminal investigation; therefore collecting and preserving evidence is paramount. To complete a thorough crash investigation, analysis and crash reconstruction, the use of an extensive amount of resources, training, experience, coordination and time is required. The Fatal Crash Investigation Unit was established in 2002, utilizing grant awards to purchase advanced technological equipment to aid investigation. Detectives utilize laser range finding equipment on scene, among other tools, to thereafter reconstruct scaled diagrams for examination and analysis. The use of cellular telephones and other electronic devices potentially causing a crash is always considered and investigated, with the assistance of the High Tech Crimes Unit.

H. ARSON INVESTIGATION UNIT

It is the function of the Cape May County Prosecutor's Office Fire Investigation Unit to assist local municipalities and the Cape May County Fire Marshal's Office in the investigation as to the Origin and Cause of structure fires occurring within the jurisdiction of the county. The Prosecutor's Office shall be notified on all fire deaths, serious fire injuries, all suspicious and incendiary fires in dwellings and commercial and utility buildings, all suspicious and incendiary fires in vehicles manufactured within the last four years or damage exceeding \$20,000, all suspicious and incendiary fires in stocks, inventory and/or supplies in exterior storage areas exceeding \$10,000, and all suspicious and incendiary fires which may be considered minor vandalism but indicating a pattern by an individual or group of individuals.





I. COUNTER TERRORISM TASK FORCE COUNTY COUNTER-TERRORISM COORDINATOR:

The Cape May County Counter Terrorism Coordinator (CTC) has been an active liaison between state and federal law enforcement agencies; specifically, the FBI's Joint Terrorism Task Force and the New Jersey Office of Homeland Security and Preparedness, since 2002. The CTC is an experienced agent, responsible to manage and coordinate the counterterrorism investigative efforts associated with Cape May County, while acting as a liaison with state and federal counterterrorism investigative entities. The CTC has established a network of Municipal Counter-Terrorism Coordinators (MCTC) consisting of representatives of all of the local municipal law enforcement agencies in Cape May County to identify and address threats with a nexus Cape May County and the Southern New Jersey region. Separate from the CTC, one Detective is assigned as an active Task Force Officer with the Joint Terrorism Task Force (JTTF) of the FBI's Newark Field Office and Atlantic City Resident Agency, with special security clearance to assist federal agents with high-level, counter-terrorism investigations related to the region. It should be noted that the Cape May County Prosecutor's Office has had personnel assigned to the Atlantic City Resident Agency JTTF since 2005.



to



J. HUMAN TRAFFICKING UNIT & CHILD ABDUCTION RESPONSE TEAM –

The Human Trafficking Unit is comprised of an Assistant Prosecutor, a Sergeant of Detectives, and a Detective who are specially trained to identify and investigate potential human trafficking. Human trafficking often involves the crimes of forced labor, child sexual trafficking and forced prostitution. The Human Trafficking Unit's responsibilities are to promptly and thoroughly investigate possible violations of human trafficking, and ensure that all investigative leads are pursued and coordinated with the State Human Trafficking Task Force. Along with these duties, the Human Trafficking Unit oversees and organizes the Cape May County Child Abduction Response Team, or CART, in the event of an abduction where information and resources need to be scrambled to properly investigate and lead to a favorable conclusion. The purpose of CART is to establish an inter-agency Child Abduction Response Team that will respond to abducted and missing child investigations pursuant to the Attorney General Law Enforcement Directive No. 2008-4, which states the County Prosecutor shall designate two (2) individuals to serve as Child Abduction Response Team (CART) leaders. CART leaders, exercising the authority of the County Prosecutor, shall oversee all missing child investigations in Cape May County.

K. COUNTY WORKING GROUP

Cape May County remains cognizant of the need to include and encourage active involvement of pertinent participants representing the process of homeland security and domestic preparedness planning. The County Working Group(CWG) is staffed with representatives from these various disciplines of first responders and key representatives of governmental structure believed to be the core authority needed to effectively and intelligently address and plan in issues relating to prevention, mitigation and recovery/response to critical incidents; including, weather and terrorism related events. The CWG meets regularly to prioritize and develop strategies and spending plans based upon the needs from the state, county, municipal and private sector participants. The CWG serves as the forum for open dialog and discussion between the various stakeholders to determine needs, coordinate activities and monitor the implementation of homeland security and domestic preparedness initiatives. The Prosecutor and the County OEM Director co-chair the Working Group, with assistance from the Freeholder Director, and the Special Operations & Planning section.

L. DEATH PRONOUNCEMENT UNIT

In 2009 the Cape May County Prosecutor's Office established the Death Pronouncement Unit to provide family members, the community and local law enforcement agencies with an additional way to assist those dealing with a loss of a family member. Maintaining the dignity of the deceased person by reducing the time spent at the scene is a benefit to all involved with the death. The Pronouncement Unit is comprised of Forensic Nurses who are specifically trained to respond to the scene of sudden, unusual, or criminal death circumstances and make the death pronouncement without disturbing critical evidence or the crime scene. Over the years there have been many incidents where a person has died either tragically, at home, or on vacation and the family was left to suffer unnecessarily from a delayed death pronouncement. During the summer months, families vacationing in our county have experienced a sudden death of a family member with their physician and support system being out of the area. The Forensic Nurses provide approximately 170 compassionate and timely death pronouncements each year.

M. FORENSIC NURSE EXAMINER (FNE) & SEXUAL ASSAULT RESPONSE TEAM (SART)

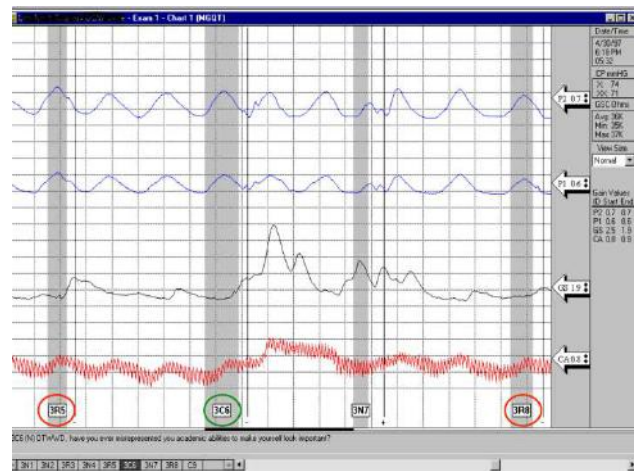
The New Jersey Division of Criminal Justice, Office of Victim/Witness Advocacy annually makes available a VOCA grant for the Cape May County Sexual Assault Response Team / Forensic Nurse Examiner Program which is administered by the County Prosecutor's Office. The Program is run by the FNE coordinator and is comprised of nine Forensic Nurse Examiners who are all Registered Professional Nurses and hold an additional certificate in Forensic Nursing from the New Jersey Board of Nursing. The FNE's respond to reports of sexual assault at Cape Regional Medical Center for patients across the lifespan. Caring, compassionate and competent forensic nursing personnel are responsible for the examination of anyone reporting a sexual assault as well as protecting and collecting evidence related to the assault. The SART Coordinator is mandated to conduct quarterly SART Advisory meetings and to provide SART training for all county law enforcement personnel. All Cape May County Law Enforcement Officers who respond to sexual assaults are trained SART Officers. The SART/FNE Coordinator also provides training for school, medical and guidance personnel, as well as hospital staff. The Forensic Nurses are provided with monthly in-service meetings as well as conferences and current information in the field of Forensic Nursing.

N. STRANGULATION/SMOTHERING RESPONSE UNIT

In 2021 the Cape May County Prosecutor's Office, along with 4 other counties in New Jersey, began providing Medical Forensic Examinations for victim's experiencing non-fatal strangulation or smothering across the lifespan. Law Enforcement agencies will refer patients to the Unit with their consent. The Strangulation / Smothering Unit will see patients at Cape Regional Medical Center ER to assess of the patient's injuries provide written documentation of the incident, photo documentation of all injuries and forensic evidence collection. Each case is discussed and referred to the CRMC ER staff for additional treatment.

O. POLYGRAPH UNIT

The Polygraph Unit administers polygraph examinations to suspects, victims, and witnesses involved in criminal investigations. The Polygraph Unit is comprised of certified Detectives who have undergone extensive training and re-training to hone their skills. Although these Detectives have primary assignments elsewhere in the Prosecutor's Office, the Unit is on-call and available 24/7. The polygraph exam utilizes the training and experience of the test administrator, as well as computerized polygraph instruments to record physiological data from three systems of the human body. Polygraph exams may be administered to verify the truthfulness of information and/or to determine participation in a crime. The Polygraph Unit of the Prosecutor's Office has been credited for several confessions and closures of criminal investigations.



P. ALCOHOL BEVERAGE CONTROL OPERATIONS

To assist the New Jersey Division of Alcohol Beverage Control(ABC), the Prosecutor has instructed the Chief of County Investigators to organize routine, undercover operations throughout Cape May County to address issues concerning underage consumption of alcohol in and from licensed establishments. The primary responsibility of the Enforcement Bureau is to institute disciplinary proceedings against licensees and permittees who violate ABC laws or regulations.

In Cape May County, there are 187 liquor licenses. The Bureau reviews reports of violations by licensees of the ABC laws and regulations. Upon a determination of a violation, the Bureau institutes disciplinary proceedings. The type of violation charged and penalty imposed is dependent upon the seriousness of the violation and the prior history of the violator. Serious and continuous violations by licensee/permittee can lead to suspension of license, monetary offers in lieu of suspension revocation of license. Less serious infractions, especially when committed by first offenders, are dealt with by monetary penalties and warnings. Undercover Detectives of the Prosecutor's Office and municipal agencies, act in undercover capacities to enter establishments observe the presence of underage patrons. If found, those found under the legal permitted age are arrested and charged. Often, the establishment may be charged criminally, as well. In conjunction with the County Freeholder's "We Check For 21" program, which actually originated in Cape May County in 1993, the undercover ABC operations support this program by encouraging liquor establishments to comply with the state and county policies and initiatives to curb underage drinking, and the potential problems that follow. As a tourist destination, Cape May County has a long standing reputation as having nightclubs and entertainment in various jurisdictions. Initiatives; such as the ABC operations, which is funded through a State grant, have had positive effects on saving lives in the County.



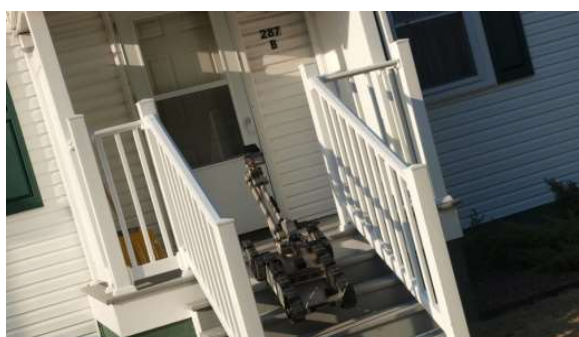
or
to





Q. TECHNICAL ASSISTANCE RESPONSE UNIT

The technical assistance response unit oversees the operation of the three robots. One (1) Packbot 510 is a medium sized robot and Two (2) Robotex Avatar Robots are small robots. The robots were funded through the Homeland Security Grant and are utilized as a tool of the Cape May County Regional SWAT team and Cape May County Crisis Negotiation Team. These robots are a valuable tool often utilized as a preventative measure to ensure officer safety in situations such as barricaded subjects, which often result in suspect standoffs with police and hostage situations. They are often deployed in during an incident where the robots are taking the place of police officers who previously had to put themselves in harm's way to accomplish the same task. The robots contain features such as; rotating paddles that allow them to climb stairs at a 45 degree angle, cameras for navigating and surveillance; including, infrared cameras to see in dark, expandable arms to peer over fences or into windows up to 7 feet, a clasping claw to open doors and retrieve weapons and/or dangerous packages which may pose a danger to the public or officer safety. These robots are durable and built to withstand attacks from angry suspects, but are not indestructible. The robots require the expertise and knowledge of operators, whom are all active detectives who train often to hone their skills.



R. MARITIME SECURITY RESPONSE UNIT

In 2015, the Special Operations Section identified a significant gap in County law enforcement's ability to address several National and area Maritime Security Plan priorities; such as, Maritime Domain Awareness, Port Resilience and Recovery Capabilities, Enhanced IED detection and prevention, and CBRNE prevention, protection, response and recovery. At the time, security patrols and responses to emergency incidents occurring on the water were provided by the United States Coast Guard and New Jersey State Police. State Police assets, stationed at significant distances, while combined with limited resources, has often caused a delay in their response time to critical incidents on the water. Although having a Coast Guard facility nearby is an extraordinary asset, limited resources sometimes caused a delay in response to life threatening events. In response, the County's Critical Infrastructure Coordinator(CIC) was tasked with developing a strategy to provide a regional maritime resource and all-hazards approach to mitigating this shortfall, as well as seeking funding sources to lessen the financial burden to County budgetary constraints.



As a result of these efforts, in 2015, the County Prosecutor's Office was awarded funding through the FY 2015 Port Security Grant Program (PSGP) in the amount of \$352,794.00, and the Maritime Security and Response Unit(MSRU) was created. The Unit maintains 29' Metal Shark Patrol Boat from Gravois Aluminum Boats, outfitted with interoperable communications equipment, the ability to be deployed during special maritime events, to conduct frequent surveillance of critical infrastructures, to possesses CBRNE and fire suppression capabilities, as a tactical team delivery vehicle, and to implement maritime patrols and anti-terrorism techniques; including, ferry escorts across the Delaware Bay. Unit members have been trained in vessel operations specific to terrorism awareness and prevention, maritime infrastructure protection and port security awareness.



All of the resources utilized to up-fit the MSRU, train crew members and conduct vessel maintenance were derived from either grant funds or by asset forfeiture monies. In 2017, the MSRU added two new operators, bringing the total number to six personnel assigned. In 2021, the MSRU conducted numerous maritime missions to include port security patrols, DRBA vessel escorts, critical infrastructure inspections and provided security during special events, such as the USCG Festival, Escape the Cape, Cape to Cape and Night in Venice. The goal of the MSRU for 2021, is to maintain operational readiness and continue to introduce the capabilities and potential resourcefulness this asset can provide. By sharing this critical resource, members of the County tactical, CBRNE and dive teams operating in Cape May County, now have a platform to deploy from and to conduct specialized operations in response to a VBIED or IED incident, as well to assist in critical incidents involving the ferry system and other areas in the County as needed.

Outfitted with radiation detection devices, the vessel will be able to quickly identify potential incendiary explosive devices (IEDs) or the components that could be used for such an attack. Portable CRBNE detectors already available in the County can be rapidly configured and deployed on this vessel should the need exist. This unit is a visible law enforcement presence on the water, with a goal to protect the one million residents and visitors against threats and acts of criminal activity and terrorism, as well as to respond to and conduct rescue and recovery operations as emergency incidents are needed.

S. MOBILE COMMAND UNIT

The Mobile Command Unit was activated after being purchased through Homeland Security grant funding in the summer of 2005. The 34 foot vehicle is being constantly upgraded with state of the art equipment; including, ruggedized laptop computers, flat screen monitors to view the mast camera system which now has night scan capabilities, GIS Mapping, and other specialized equipment, as well as Satellite and Digital communications if all landline and cell phone communication is out during

a hurricane. The vehicle is equipped with both an ACU-1000 communications interoperability platform and an ICRI (Incident Commanders Radio Interface), both used to facilitate communications when disparate radio systems are being utilized. The vehicle offers the public safety community a mobile platform to manage the all hazards response plan to critical incidents; including, hurricanes, assisting in hostage

negotiations, mass-evacuations and mass-gathering events, using the National Incident Management System of crisis management. Interoperable Communications, or the ability to communicate with federal, state and local agencies at the same time, is absolutely essential during critical incidents, and all investigative personnel have been issued 700mhz portable radios to aid interoperability. The Command Unit has become a fixture at large scale crime scenes and SWAT deployments, supported by the Cape May County Office of Emergency Management's Operations vehicle. During recent major hurricane events, the Command Vehicle provided critical backup for the County Emergency Management Office when their radio system went down, and was later utilized for dispatching and communications after the Super Storm when the Sea Isle City Police Department was flooded and evacuated. The operation of this sophisticated vehicle, maintained by members of the Prosecutor's Office, requires continued and advanced training and exercises with the vehicle's systems and public safety agencies throughout the county and region. There are currently six members of the Prosecutor's Office, trained in its deployment. It has been used both in large scale community events and long term criminal investigations and continues to be a great asset to the Office and regional public safety operations.



T. RAPID RESPONSE UNIT

In 2005, Prosecutor Taylor established a Rapid Response Team within the Prosecutor's Office, comprised of investigators, uniquely trained in special weapons, apprehension, containment, combat first aid, and rescue tactics. The mission of the Rapid Response Team is to facilitate the swift and immediate deployment of law enforcement resources to life-threatening on-going or dynamic situations where delayed deployment could otherwise result in death or serious bodily injury to innocent persons. Investigators assigned to the Rapid Response Team are equipped and available, 24 hours a day, seven days a week with tactical equipment to enable them to safely respond and deploy to a critical incident to assist first-responding patrolman and Cape May County Regional SWAT assets. Rapid Response team personnel work closely with members of the community to not only respond to critical incidents, but also to determine best practices to implement in order to prevent them. These include, but are not limited to, each school district within Cape May County, the Cape May-Lewes Ferry, Cape Regional Medical Center, Cape May County Superior Court, as well as various other soft-target locations.

U. CAPE MAY COUNTY HOSTAGE/CRISIS NEGOTIATIONS TEAM

As the potential for violence is always present. Incidents involving active shooter, barricaded subjects, hostage takers, or persons threatening suicide represent especially trying and stressful moments for law enforcement personnel responding to them. To successfully resolve these types of situations, law enforcement in Cape May County benefits from the resources of the Crisis / Hostage Negotiation Team. The team is managed by the Prosecutor's Office and staffed with law enforcement officers from municipalities in the County, as well as Detectives in the Prosecutor's Office, comprising of a team that is well-trained and well-equipped to address complex emergency and crisis situations. The skills of the Crisis / Hostage Negotiation Team have consistently proven to be Cape May County law enforcement's most risk effective method to achieve a successful outcome, as negotiation defusing skills represent law enforcement's most successful tool to resolve a crisis without injury. Due to the tactical nature of these incidents, the Team works closely and in coordination with the County SWAT Team and SWAT Commanders during incidents. The Team consists of twenty (20) law enforcement officers from Cape May County agencies; such as, Ocean City Police Department, North Wildwood Police Department, West Wildwood, Wildwood Police Department, Cape May County Sheriff's Department, Cape May County Department of Corrections, Sea Isle City Police Department, Lower Township Police Department, Middle Township Police Department and the County Prosecutor's Office. The Team trains together six (6) times throughout the year and attends other specialized training programs that become available. In 2021, the Hostage /Crisis Negotiations Team was activated on three emergency crisis incidents. The Cape May County Crisis / Hostage Negotiation Team are trained by the Federal Bureau of Investigation and Public Agency Training Council and upon completion receive a Certification.



V. CAPE MAY COUNTY REGIONAL SPECIAL WEAPONS AND TACTICS (SWAT):

In 2005, the Prosecutor led a review to the level of response that Cape May County law enforcers have to tactical situations, in response to a number of critical violent incidents that occurred throughout the world; including, school sieges in Columbine, Colorado, Beslan, Russia. In July of 2005, an armed suspect led Cape May County law enforcers on a high-speed chase through various communities, ending with him barricading himself on a garage roof and repeatedly fired his weapon at officers. Although our municipal SWAT teams performed admirably, the event was prolonged, causing immense strain on the personnel and resources. This event identified insufficiencies with our personnel to relieve and support the tactical members to continue a standoff of a large magnitude, and the need to coordinate efforts in the management and communications of the various teams. The event in 2005 precipitated the Prosecutor and the County Chief's of Police Association creating the first ever, coordinated, regional tactical response SWAT team in Cape May County. Events in Mumbai, India; Newtown, Connecticut; at the Boston Marathon; in France at Charlie Hebdo, the French Bataclan, Football Stadium and street cafes; at Virginia Tech and Sandy Hook; in San Bernardino, California; at the Pulse **nightclub in Orlando, Florida**; and even more close to home in Seaside Heights during a local 5K run, prove that terrorist and active-shooters can strike anywhere and the peacemakers shall be prepared and ready to address crisis's.



Through the foresight of the County Prosecutor and the municipal chiefs of police, a forty-person regional tactical SWAT team was established in 2006, consisting of members from each law enforcement agency in the County. A fully capable SWAT Team is necessary to be prepared to respond to potential terrorist events and hostage situations and Cape May County law enforcement and political leaders recognize this for the safety of the county's citizenry. The Team trains for a wide variety of tactical situations; including, active-shooter, hostage-rescue, high-risk warrant services, dignitary protection and school/critical infrastructure security.

Besides the incorporation of the County Sheriff's K9 Unit into the SWAT team, SWAT Commanders also benefit from other valuable assets to bring an end to dangerous situations; such as, the organized Hostage/Crisis Negotiations Team, and Tactical Paramedics from AtlantiCare. The Tactical Medics, who train monthly and deploy regularly with the Team, are crucial to ensuring immediate Advanced Life Saving treatment to injured officers or citizens.

The Prosecutor's Office is responsible for overseeing the administration, budget and operation of the Regional SWAT Team. To date, the Prosecutor's Office has been aggressive in applying for grants and date, has been awarded of over approximately \$3,500.00 in Homeland Security funding for these and other law enforcement purposes. Grant funding has lessened the financial burden on taxpayers, which has afforded the Team to purchase an armored response and rescue vehicle to support the operations of the SWAT Team, and an I-Robot robot for CBRNE (Chemical, Biological, Radiological, Nuclear, Explosives) operations, allowing for investigations of emergency or terrorist incidents without sending personnel into a hotspot or dangerous situation. Equipment is continuously upgraded using drug forfeiture funds for their purchase.



to



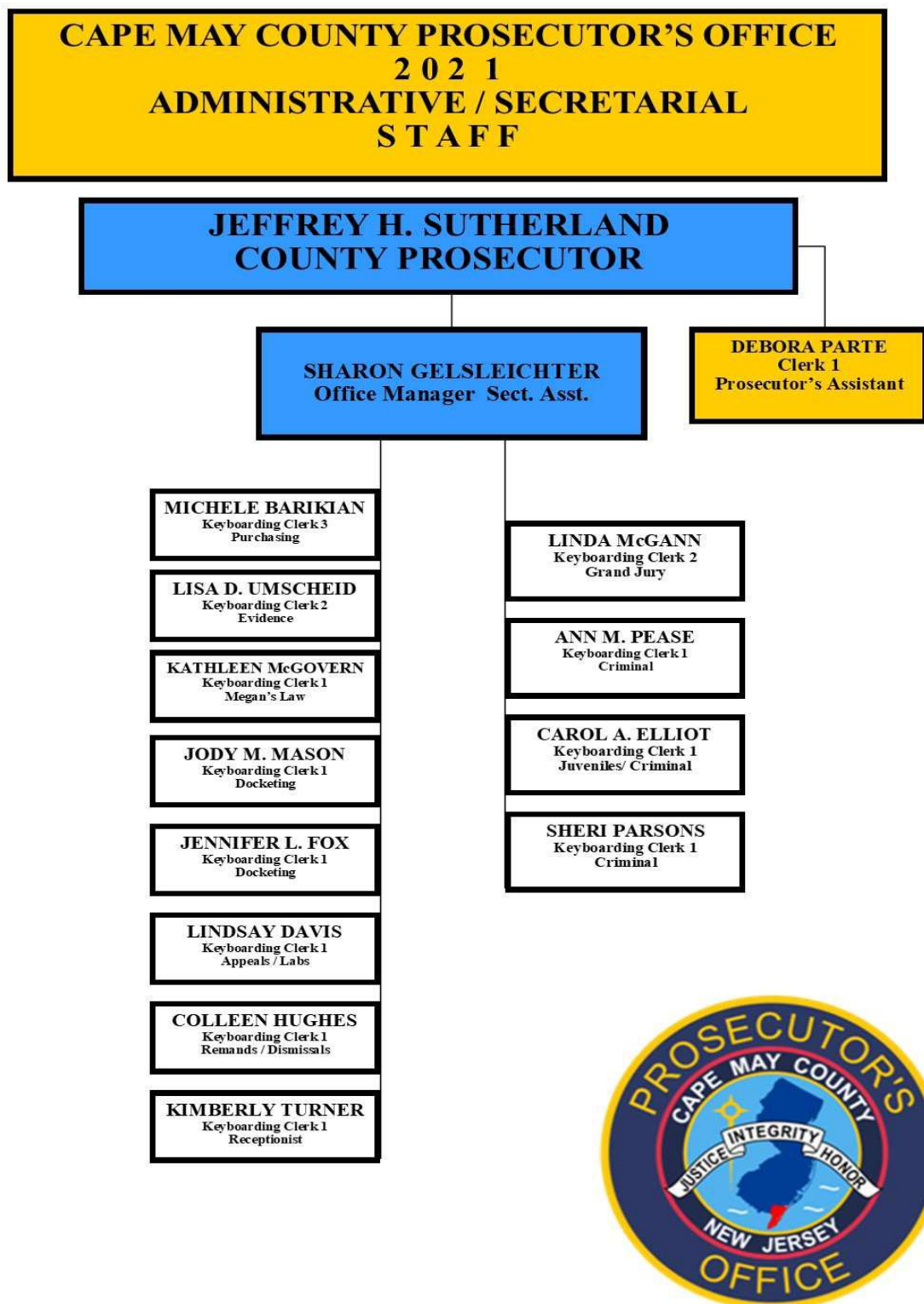
In 2021, the Cape May County Regional SWAT Team responded to 16 tactical operations, a decrease from 2020. The majority of operations consist of high-risk drug related search warrants at gang and/or narcotics distribution locations, followed by barricaded persons and arrest warrants. The Team was not called upon to assist any outside agencies in 2021. For 2021, operators spent approximately 5,000 hours in training.





SECTION THREE – SUPPORT SERVICES

A. ADMINISTRATIVE / SECRETARIAL SECTION:



B. VICTIM WITNESS-

The Cape May County Prosecutor's Office of Victim Witness Advocacy is an integral unit within the Cape May County Prosecutor's Office. The Office of Victim Witness Advocacy is comprised of one Coordinator, three Advocates, and an Administrative Assistant.

The Office of Victim Witness Advocacy (OVWA) provides services to victims of all crime with particular attention to homicide survivors including fatal motor vehicle crashes, domestic violence, sexual assault, aggravated assault and violent crimes in general. The Advocates respond to the diverse needs of victims and witnesses providing answers and explanations regarding a system that often seems confusing. Our office provides notification of cases status, via regular mail as well as the VW Portal. Advocates assist with meeting with assistant prosecutors and escort victims and their families to court hearings and trials, offering support. Advocates are also involved with homicide investigations within Cape May County and work closely with the Cape May County Prosecutor's Office Major Crime Unit and local law enforcement to provide immediate services and support to the families of homicide victims in an effort to develop a rapport of trust as they begin to deal with their trauma and navigate the criminal justice system.

The Multi-Disciplinary Team (MDT) Coordinator ensures a collaborative case management approach to victims of child abuse and their non-offending families. The coordinator organizes and oversees the bimonthly case review meetings of the Multi-Disciplinary Team to include assistant prosecutors, law enforcement, mental health, medical and Department of Children Protection and Permanency (DCP&P). The MDT Coordinator acts as a liaison between all the disciplines to ensure that the safety and wellbeing of the child victims are being met.

The Cape May County Prosecutor's Office of Victim Witness Advocacy also implemented a Domestic Violence Municipal Court Outreach Program several years ago which continues to thrive today. An Advocate assists domestic violence victims whose victimization does not rise to the level of an indictable offense. The program acknowledges that domestic violence is usually not a single event and often becomes more severe and frequent over time. As needed, an Advocate is assigned to travel to various municipal courts throughout the county to provide information to victims regarding their rights and options as support services available to them through this difficult and sometimes overwhelming process.

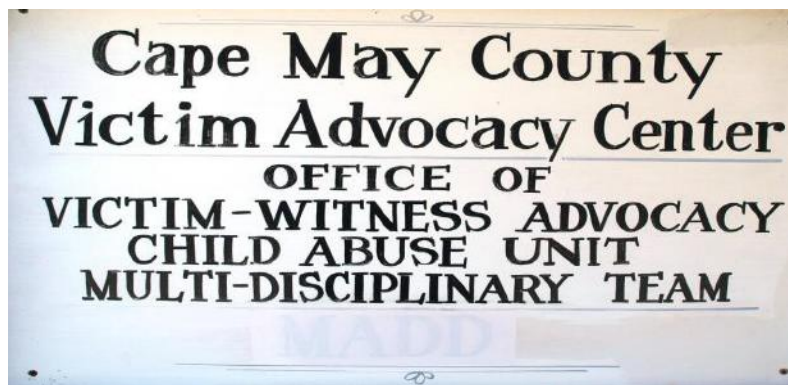
The Office of Victim Witness Advocacy continues to participate in community outreach in educating the public on victims' rights and their standing in the criminal justice process. The Victim Witness Coordinator attends various functions and meetings with other county agencies to coordinate a community effort to assist Cape May County residents. The coordinator also serves on the County Working Group for Domestic Violence. Additionally, the coordinator provides instruction regarding crime victims' issues and rights is presented to both local law enforcement and to the recruits in training at the Cape May County Police Academy.

The Cape May County Prosecutor's Office of Victim Witness Advocacy served 2,117 new victims in 2021, an increase of 3% from 2020. This number does not account for those victims whose victimization occurred in previous years. Services provided numbered in the tens of thousands, ranging from in-person/video assistance, referrals for resources, advocacy on various levels, and notification of criminal justice events. The following victims were served by the OVWA.

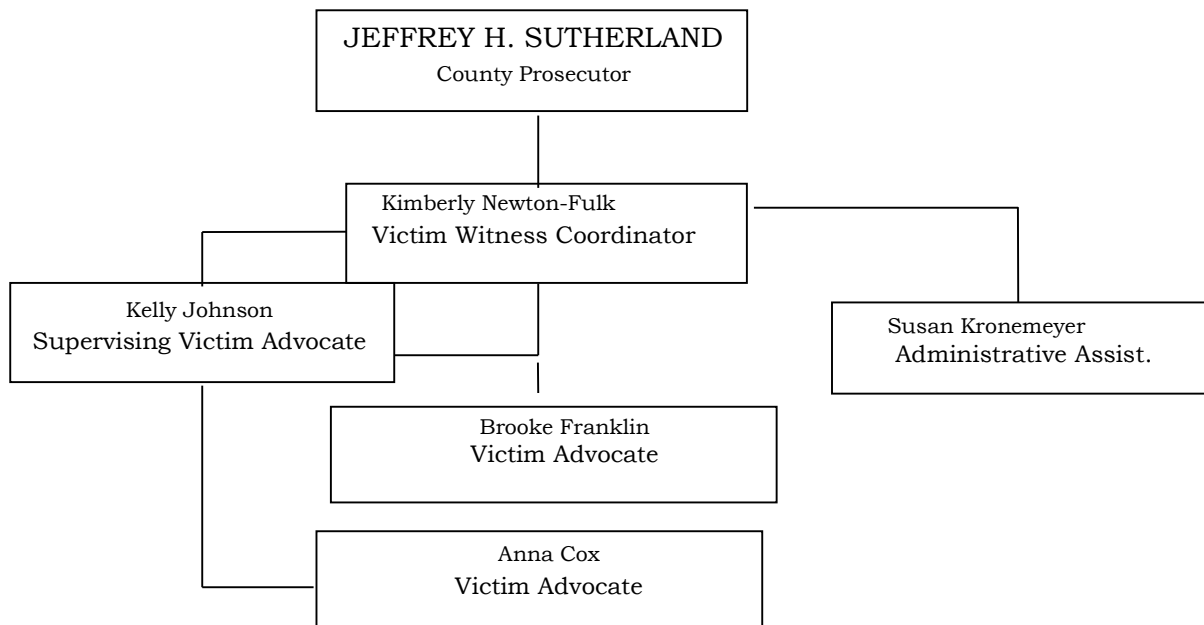
Domestic Violence Victims -377 (up 1%)
Survivors of Homicide -116 (up 6%)
Child Physical Abuse -24 (up 2%)
Child Sexual Abuse -87 (up 74%)

Adult Sexual Assault - 16 (down 12%)
DUI/DWI Crashes - 3 (down 50%)
Assault(Simple & Agg) / Robbery -418(up 13%)
Other - 1,176 (down 2%)

The mission of the Office of Victim Witness Advocacy is "Do No Further Harm." With that in mind, the Office of Victim Witness Advocacy strives to reduce the impact of further victimization on crime victims as they navigate the criminal justice system. It is our responsibility to ensure that all victims and witnesses are treated with dignity, compassion and respect as stated in the New Jersey Crime Victims Bill of Rights (NJS 52:4B-36).



2021 OFFICE OF VICTIM WITNESS ADVOCACY



C. EVIDENCE CUSTODIAN -

The Cape May County Prosecutor's Office maintains an extensive Evidence retention program, led by the Office's Evidence Custodian who accepts and manages items of evidence from all state, county and municipal law enforcement agencies operating in Cape May County.

CAPE MAY COUNTY PROSECUTOR'S OFFICE FORENSIC LABORATORY



AN ISO 17025 ACCREDITED LABORATORY SINCE 2011

2021 ANNUAL REPORT

Prepared by Kenneth Hand, Laboratory Director

Introduction

In August of 1972, the Cape May County Prosecutor's Office Forensic Laboratory became one of the first forensic laboratory systems promulgated in the State of New Jersey and was formerly designated as a NJ State Forensic Laboratory by the New Jersey Attorney General on September 21, 1987 under NJSA 2C:35-19a. Within the County of Cape May, the Laboratory services fourteen (14) agencies including the Cape May County Prosecutor's Office Gangs, Guns, and Narcotics Task Force (GGNTF) which may also coordinate with other external local, state, and federal agencies requesting expedited laboratory analyses unavailable elsewhere.

The Laboratory provides unbiased analyses and expert testimony as well as rush analysis upon request for all agencies, especially for narcotics investigations, warrants, overdoses, and death investigations concerning suspected controlled dangerous substances (CDS). The Laboratory maintains a robust array of modern analytical instrumentation that rivals much larger laboratory systems to ensure the correct elucidation of the chemical or drug identity. Multiple analytical techniques provide the ability to obtain repeatable identification which ensures accuracy, to rule-out false positives, and to compare previous unknown substances to the Statutes for the ascertainment of controlled status.

ISO/IEC 17025 Accreditation and Certifications

The Laboratory had been annually certified by the American Society of Crime Laboratory Directors/Laboratory Accreditation Board (ASCLD/LAB) in the Controlled Substance Analysis since 2006. In 2011, the Laboratory was accredited under international standards ISO/IEC 17025:2005 in the discipline of Drug Chemistry for Controlled Substance and General Chemical Analysis. The laboratory is subject to full reassessment every four years to maintain accreditation. Within each accreditation cycle, onsite surveillance visits and performance reports are required in alternating years to ensure adherence to written, enforced, and controlled guidelines. ASCLD/LAB merged with the ANSI-ASQ National Accreditation Bureau (ANAB), one of the largest national laboratory accreditation agencies, in 2017. The Laboratory was fully assessed to the newest version of ISO/IEC standards in October 2019 to achieve ISO/IEC 17025:2017 accreditation. Accreditation was upheld in November 2021. The Laboratory is one of three ISO/IEC 17025:2017-accredited forensic chemistry laboratories within the State of New Jersey. Accreditation ensures and enforces ongoing standards of excellence to all laboratory protocols and practices. All three chemists must annually pass a proficiency examination to conduct forensic chemistry analysis.

Moreover, the New Jersey Department of Environmental Protection (NJDEP) Office of Quality Assurance recertified the newly merged Cape May County Public Health Laboratory for Water Microbiology testing in April 2021 an annual assessment activity requiring onsite surveillance and proficiency testing.

Assimilation with the Cape May County Health Department

In October of 2018, plans were made to join the environmental chemistry and microbiology operations of the Cape May County Health Department Environmental Laboratory with the Forensic Laboratory to form the Cape May County Public Health Laboratory. Currently, both locations are operational for the respective disciplines although due to space, a state-of-the-art mass spectrometer for forensic research is housed within the Environmental Laboratory.

Such a merger was approved for the consolidation of County resources, personnel, and to produce an independent laboratory system which would conduct forensic analysis unaffiliated with a particular law enforcement agency. Personnel, budget, and asset transfer was realized in January 2019. As of the date of this report, only microbiological water analysis is conducted in addition to forensic drug chemistry. The annual Cooperative Coastal Monitoring Program (CCMP) monitors beach water at 61 locations along the Cape May County Coastline for enterococcus bacteria as a marker of bathing water safety. As part of the assimilation with the Health Department Laboratory, this program is conducted seasonally (May-September) in conjunction with the New Jersey Department of Environmental Control (NJDEP) and Cape May County Health Department. The Laboratory can expand its roster of analysis upon County needs.

The Forensic Laboratory operations continue to be conducted within the Prosecutor's Office with a two (2) full-time and one (1) part-time chemist.

Collaborations with Academia

As of June 2021, the Laboratory has been actively collaborating with Rutgers University-Camden for summertime research internships and shared usage of equipment. The summer of 2021 was the first time the Laboratory has hosted a college intern; the project consisted of quantifying the amount of fentanyl, heroin, and other ingredients within seized street heroin samples. The results of this short study are described herein.

Impact of Cannabis Decriminalization

The New Jersey Industrial Hemp Pilot Program (NJIHPP) was established by P.L.2018, c.139 (C.4:28-1 et al.) and made effective 21 November 2018. As a result of this agricultural bill intended to encourage the hemp industry, the definitions pursuant therein required the revision of the definition of marijuana, hashish, and the preparations and derivatives thereof pursuant to 2C:35-2. In brief, NJIHPP instituted the federal Department of Agriculture's definition of hemp as any cultivar specimen or preparation/derivative of *Cannabis sativa* L. with 0.3% or less delta-9-THC on a dry weight basis and marijuana as any *Cannabis sativa* L. cultivar specimen or preparation/derivative of *Cannabis sativa* L. with greater than 0.3% or less delta-9-THC on a dry weight basis. No formal announcement to follow any new language in Title 2C:35 had been given by any state or federal authority to laboratories nor was a formal revision made to the published version of Title 2C until 2019's version in Cannel.

In June of 2019, a review of the NJIHPP and its new definition resulted in the Laboratory Director's decision to halt all testing of Marijuana until new methodology could be validated and implemented. Quantitation is only properly achieved via high-performance liquid chromatography coupled with Diode Array Ultraviolet Detection (HPLC-DAD). Other methods such as gas chromatography (GC) are insufficient as plant

delta-9-THC is present in two forms: free delta-9-THC and tetrahydrocannabinolic acid (THCA) and its isomers. THCA is the biological precursor to delta-9-THC and is converted to delta-9-THC when cannabis is burned, dried, or heated. As GC

techniques cause THCA to decarboxylate to delta-9-THC during analysis, such heated methods are not amendable to the proper quantitation of free delta-9-THC in any suspected cannabis specimen as this conversion is not always efficient nor should assumed to be. Since July 2019 and operating throughout 2020, the Laboratory successfully implemented a validated assay to quantitate delta-9-THC cannabinoids in all suspected cannabis vegetation and preparations. Turn-around-time for a marihuana laboratory submission averaged 1.5 weeks at a cost of over \$100 per sample.

As of writing, this Laboratory is the only forensic facility in the State of NJ quantifying delta-9-THC as imposed by NJIHPP via HPLC-DAD. Other laboratory systems are relying on ratio-method applications which are less robust. Quantitation is still performed for large amounts of cannabis, for DWI/DUI purposes, and upon law enforcement request. Increasingly, requests for screening cannabis and its products for other CDS have been made to the laboratory by submitting agencies for overdose workup. November 2020 realized the public approval of legalizing recreational marihuana use in NJ with decriminalization occurring on February 22, 2021 with legalization of recreational quantities occurring in April 2022. Although quantitation is continued to be required for certain DUI/DWI cases and above statute-quantity seizures to differentiate hemp and marihuana cultivars, 2021 cannabis casework decreased pursuant to decriminalization.

Laboratory Instrumentation and Facilities

Instrumentation within the laboratory includes an Automated Gas Chromatograph-Fourier Transform Infrared Spectrometer Detector (GC-FTIR), which allows isomers—compounds which differ only in the arrangement of specific structural components—to be separated and identified as well as give vital molecular fingerprints for newly emerging analogs of designer drugs. This ability is similar for the Laboratory's Fourier Transform Infrared Spectrometer with Attenuated Reflectance (ATR-FTIR) for extracted and relatively pure specimens in crystalline, amorphous, or liquid forms.



Left: ASAP/Agilent Gas Chromatograph Fourier Transform Infrared Spectrometer (GC-FTIR)

The laboratory currently has three (3) high capacity, automated Gas Chromatograph-Mass Selective Detectors (GC-MSD). The GC-MSDs are the workhorses of the Laboratory; they allow screening of unknown samples with the aid of multiple programs and library searches and confirmation of identity by comparison of two unique types of data (relative time of compound detected and the molecular fragmentation pattern) gathered from a sample to a known certified reference standard.



Left: Agilent Gas Chromatograph-Mass Spectrometers (GC-MS)

Two HPLC-DADs, one with a refrigerated sample compartment, are employed for the quantitation of cannabinoids in all suspected cannabis samples following tedious extraction.

Left: Agilent and Shimadzu High Performance Liquid Chromatograph-Diode Array (HPLC) units. Below: Zeiss Zoom



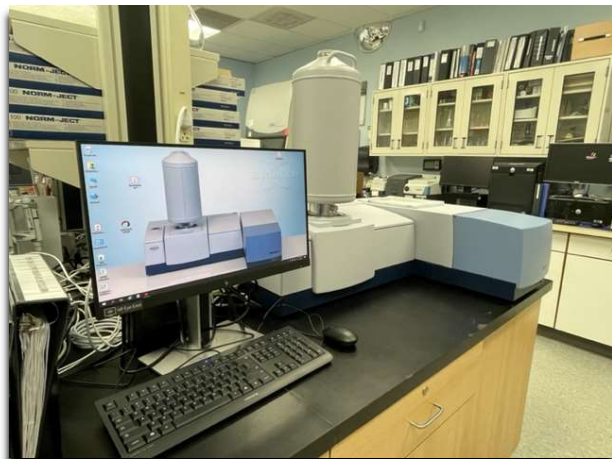
Stereomicroscope

In August of 2021, an Agilent 6550 high-resolution Quadrupole Time-of-Flight Mass Spectrometer (QTOF) coupled with an Agilent 1260 high performance liquid chromatograph (HPLC) was acquired from Rutgers University-Camden as part of a cooperative agreement and asset transfer from NJ public institutions. This instrument shall be used upon full validation to assess targeted drug screening and progress towards certification in toxicology. Additionally, research will be performed to profile street drug specimens and aid in the identification of unknown compounds previously not possible with simpler techniques.



Above: Agilent LC-QTOF (1260 Series HPLC coupled to an Agilent 6550 ifunnel™ QTOF mass spectrometer located within the Health Department Facility

Capital improvement funding in 2021 provided for a new spectroscopy suite including a new far and mid-IR FTIR and a Raman spectrometer from Bruker Scientific. Both instruments are employed for the determination of methamphetamine, compounds of high purity in an ultra-rapid manner, and to elucidate unknown compounds.



Above: (Left) Bruker Multi-Ram Raman Spectrometer; (Right) Bruker Invenio-R Mid and Far-IR FTIR Spectrometer

A double-beam UV-VIS Spectrophotometer completes the analytical circuit with the ability to rapidly screen acid, base, and neutral characteristics of different samples to aid the Chemist in discerning the class of compound based upon unique spectra and for routine general chemical analysis. The laboratory is complemented with three (3) semi-micro (0.01-mg readability) analytical balances which allow trace amount of samples to be weighed with known uncertainty budgets; they all feature automatic doors to aid in the prevention of cross contamination. Moreover, trace sample crystal testing and screening unknowns when necessary can be accomplished with the use of a polarizing microscope. A research-grade imaging zoom stereomicroscope (Zeiss) documents all microscopic botanical characteristics of cannabis specimens as well as for the photodocumentation of trace analysis. Other major equipment includes a ball-mill homogenizer, solid phase extraction apparatus, Anton-Parr polarimeter, a Perkin-Elmer Inductively-Coupled Plasma Mass Spectrometer (for metals analysis), an air-free double vacuum manifold (Schlenk Line), and a research grade rotary evaporator.



Left: Flow-Sciences, Inc. Filtered Chemical Workstation; *Right:* Labconco, Inc. Stainless Steel Biological Safety Class II Cabinet



Above: Labconco, Inc. Dual HEPA-filtered Glovebox with a Semi-Micro Analytical Scale for weighing highly poisonous/unknown compounds.



Above: Perkin-Elmer Nexion 300Q ICP-MS for metals analysis (located within the Health Department Facility)



Above: Schleck Line for synthesis requiring inert nitrogen or argon atmosphere.

The Laboratory continues to aid in overdose and death-investigation casework in which syringes and related paraphernalia submitted to the laboratory are analyzed despite potential hazards on a case-by-case basis. All handling of syringes takes place within the Biosafety Cabinet employing minimal handling of the syringe using micro-extraction techniques to reduce the hazardous nature of the specimen handling.

Summary of Laboratory Submissions

The Laboratory had analyzed a total of 427 individual cases in 2021 and processed 13,419 samples. There was no backlog of 2020 casework leading into 2021 nor a backlog of 2021 casework leading into 2022. Overall, the total cases submitted decreased 30.9% from 2020 due to a sharp decline in cannabis submissions and continued COVID-19 pandemic policing and societal implications leading into the first quarter of 2021.

The number of samples requiring analysis per submitted specimen varies within each sampling plan and that the number of cases may overlap; i.e. a single case may contain heroin specimens and prescription drugs or non-controlled substances. In 2021, the following total aggregate amounts of common CDS were realized in analyzed cases:

- **98.5 ounces** of Heroin
- **14.1 ounces** of Fentanyl
- **8.7 ounces** of Cocaine
- **3.4 lbs** of Marijuana
- **7.7 ounces** of Methamphetamine

Of the 98.5 ounces of Heroin, 97.8 ounces were obtained from a single bulk seizure case from Wildwood leaving 0.7 ounces present within the remaining 426 cases. 2021 additionally realized a dramatic decrease in Heroin-containing specimens, down 45% and 76% from 2020 and 2019, respectively, as revealed in *Table 1*, 2021 realized **a 104% and 148% increase in submissions of fentanyl specimens compared to 2020 and 2019**, respectively. A specimen is considered an item representing any number of similar samples.

Major Drug Class Specimen Trends Present in analyzed Cases per Year					
YEAR	Heroin	Cocaine	Marijuana	Methamphetamine	Fentanyl
2005	73	346	300	2	0
2006	125	431	259	7	8
2007	92	351	285	2	1
2008	84	326	306	0	2
2009	106	300	413	0	1
2010	96	193	305	6	1
2011	184	295	333	10	1
2012	282	154	306	4	2
2013	458	208	279	4	4
2014	358	99	308	2	24
2015	409	115	300	2	16
2016	454	113	401	19	34
2017	366	142	298	44	42
2018	360	109	503	91	47
2019	240	121	257	174	75
2020	106	63	279	124	91
2021	58	64	73	106	186

Table 1: Specimens submitted for analysis per drug class, **2005-2021**

Due to the decriminalization of personal use cannabis, there was a 74% reduction in cannabis casework. These figures are plotted in *Figure 1*, and importantly reveal the increase prevalence of fentanyl regardless of cannabis prevalence. Importantly, Methamphetamine and Cocaine submissions have remained mostly unchanged from 2020 but have substantially decreased compared to 2019.

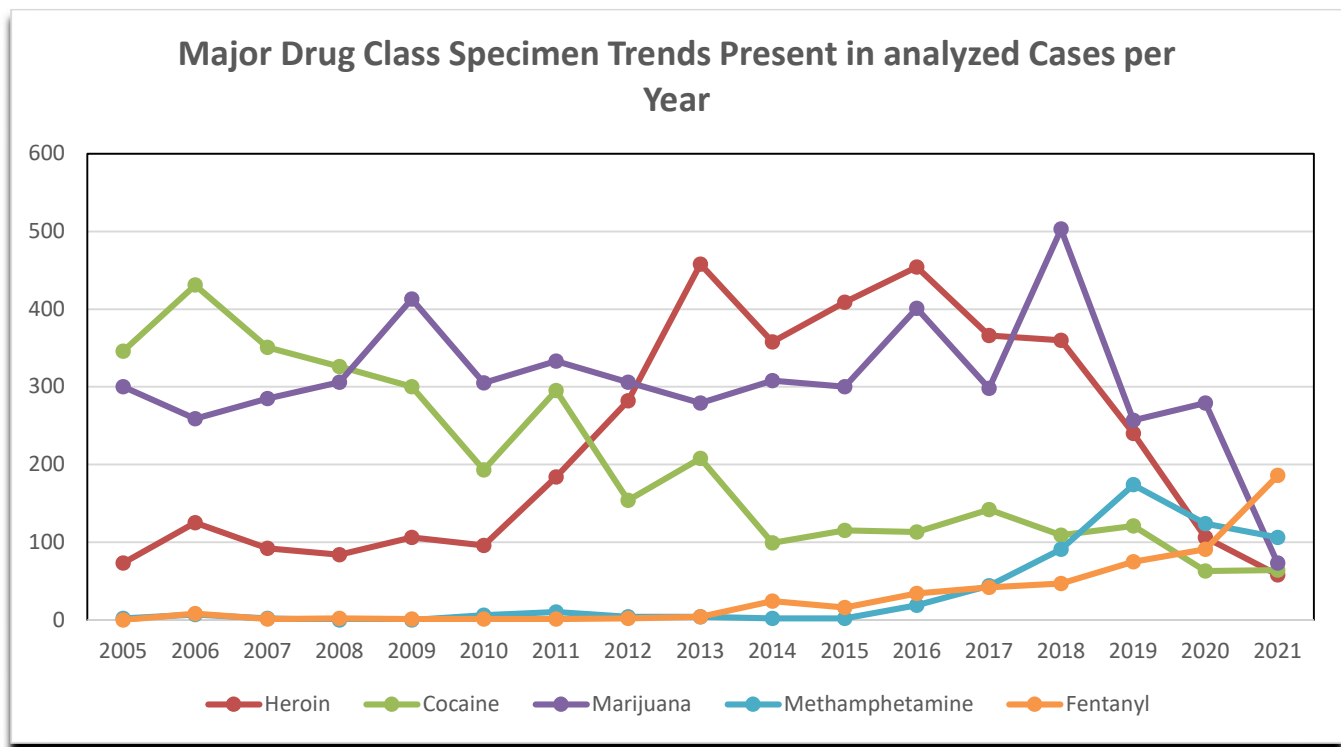


Figure 1: Specimens submitted for analysis per drug class, **2005-2021**

As a result of decreased cannabis submissions, most specimens submitted by all agencies are now depressants and stimulants as evident in *Figure 2*. Notably, prior to cannabis decriminalization policies, the specimen class distribution was nearly equal in 2019-2020 likely due to the increased local availability of all major drug

classes. Approaching 2022, the specimen distribution shifts towards a two-class prevalence (stimulants and depressants).

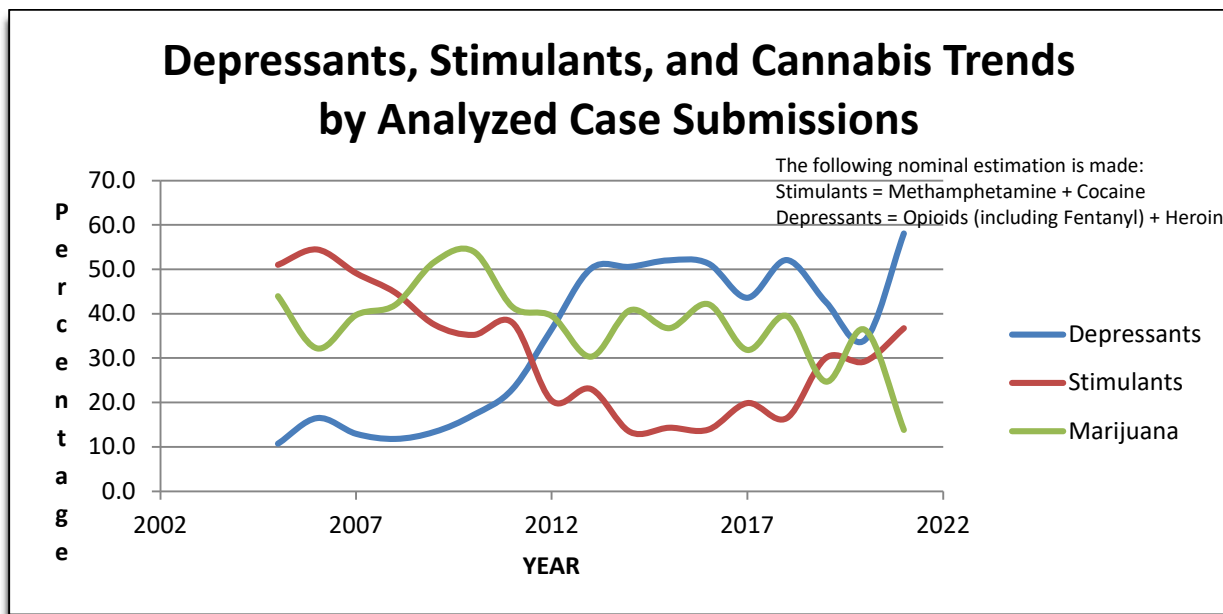


Figure 2: Depressant, Stimulant, and Cannabis Specimen Trends 2005-2021 Note that total percentage is not normalized to 100% as multiple drug classes are often presented within single cases (multiple specimens).

A more detailed specimen comparison between 2020 and 2021 submissions (*Figures 3-4*) suggests that majority of minor drug classes (less than 10%) remain grossly unchanged over the past year. The 14% reduction of cannabis specimens analyzed has been absorbed by the 16% increase in fentanyl specimens.

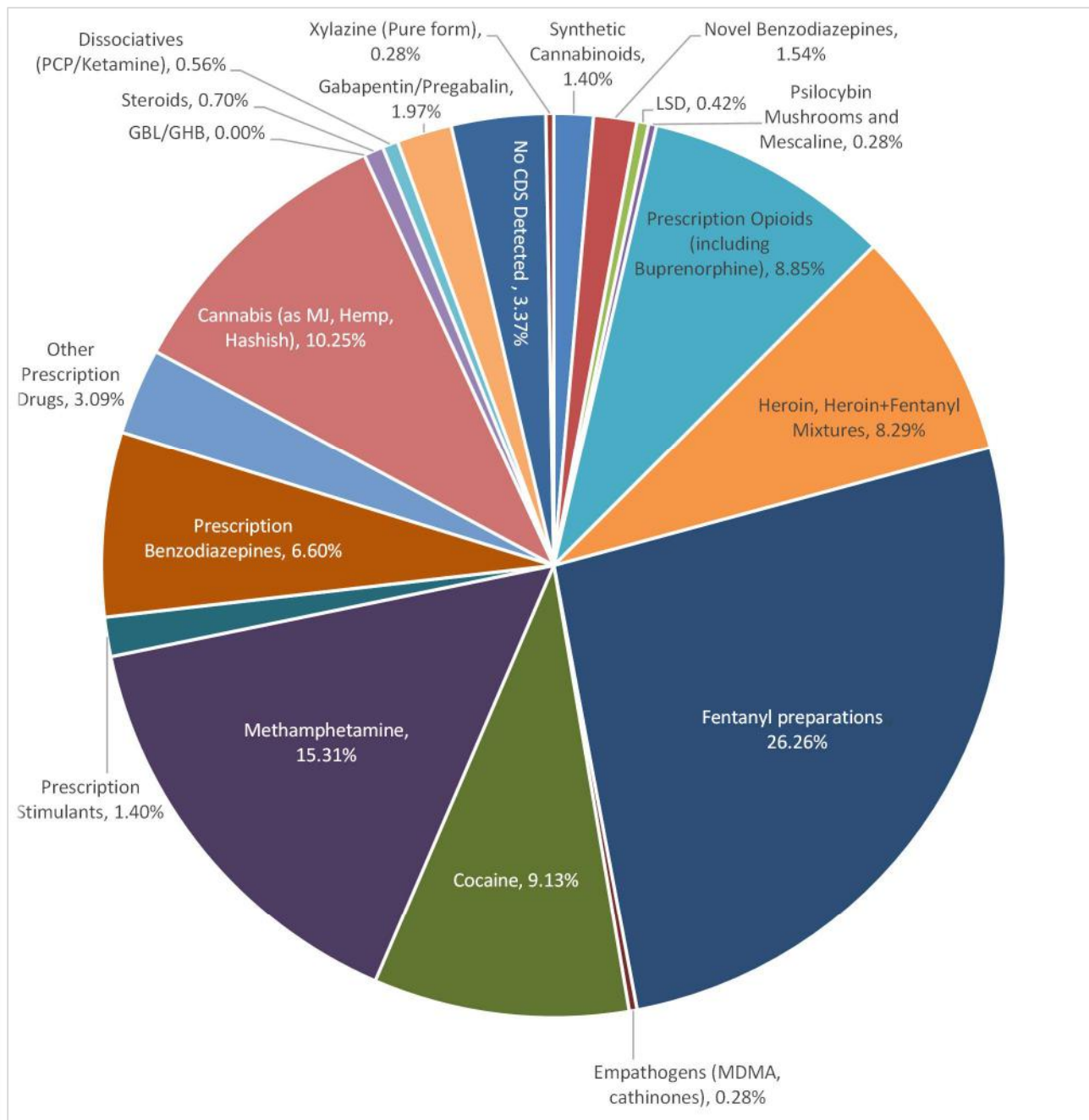


Figure 3: Submitted Analyzed Items (Detailed) 2021

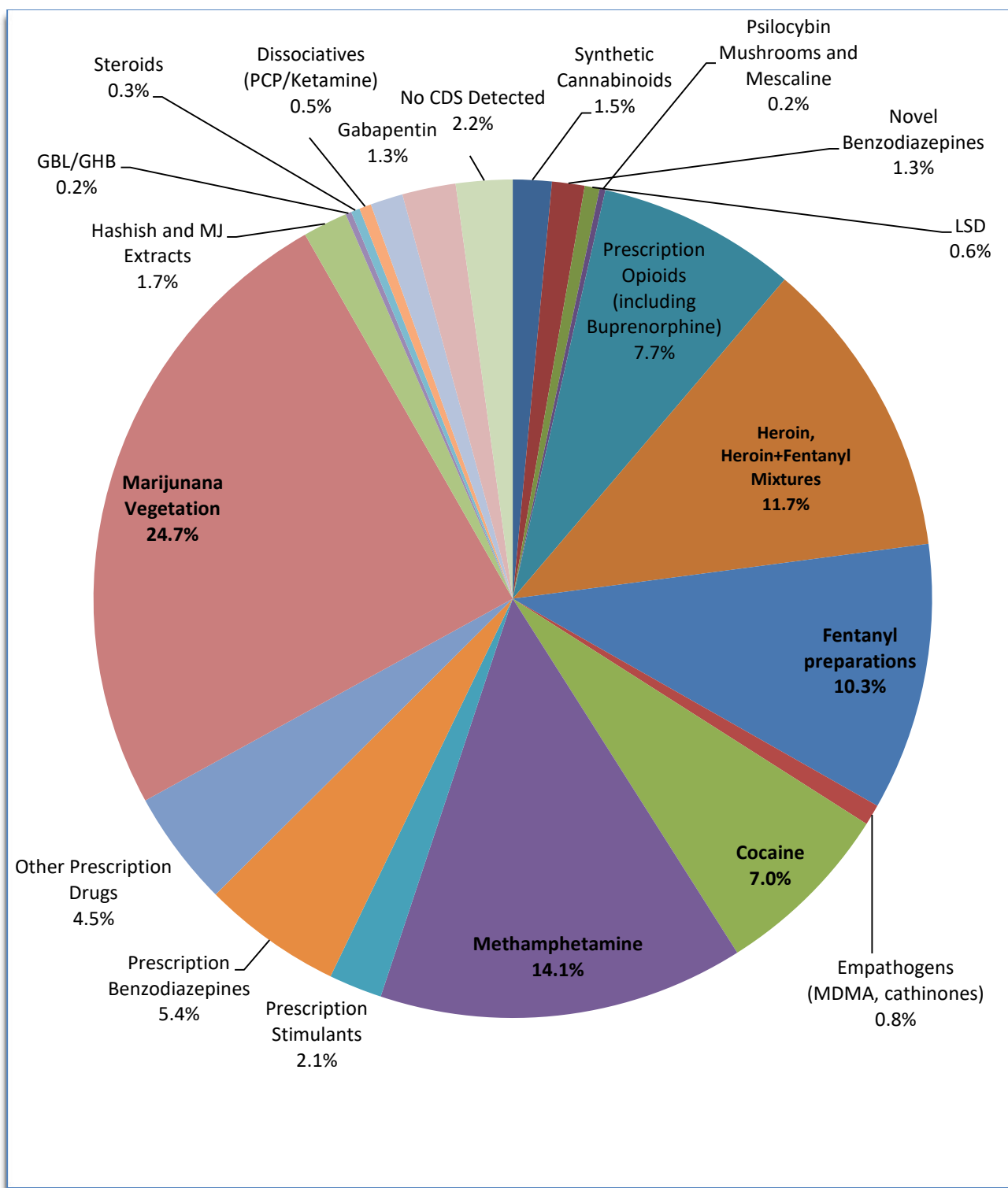


Figure 4: Submitted Analyzed Items (Detailed) 2020

Compound tracking of submitted street heroin glassines revealed that of the 9,664 submitted glassines in 2021, **92% of all samples tested contained fentanyl with or without heroin and other active pharmacological ingredients**. Common cutting agents and co-drugs included tramadol, phenacetin, quinine, xylazine, lidocaine, dimethylsulfone, para-fluorofentanyl, acetaminophen, and caffeine.

Quantitation was performed by the Rutgers-Camden intern utilizing Gas Chromatography-Mass Spectrometry (GC-MS) in July 2021 of various glassines submitted during 2021. The experiment was designed

to investigate both variations amongst different “brands” or “stamps” of glassines as well as within a single batch of a single submitted specimen. *Figure 5* and *Figure 6*

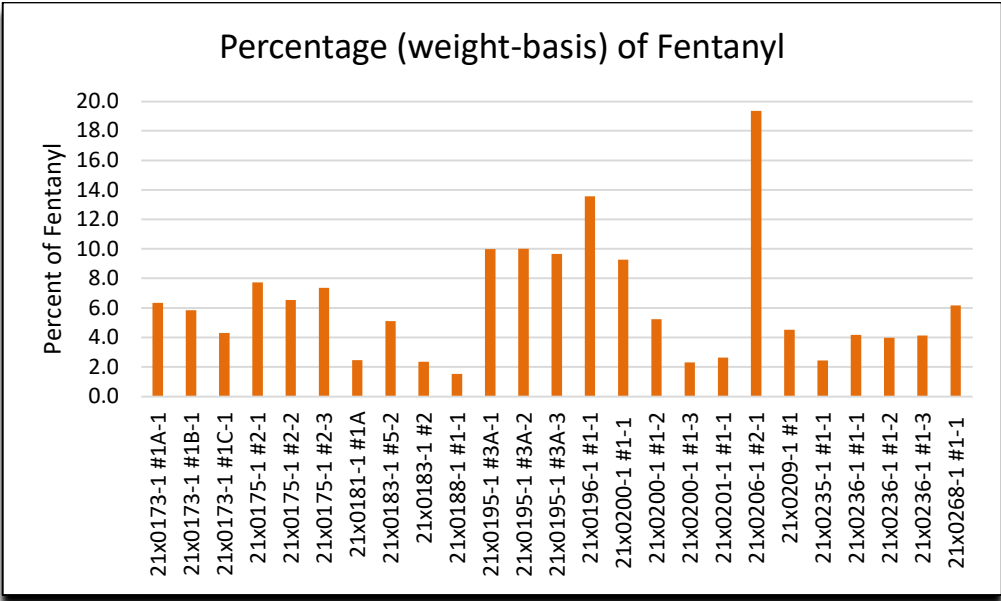


Figure 5: Weight-percent basis of Fentanyl of various submitted specimens

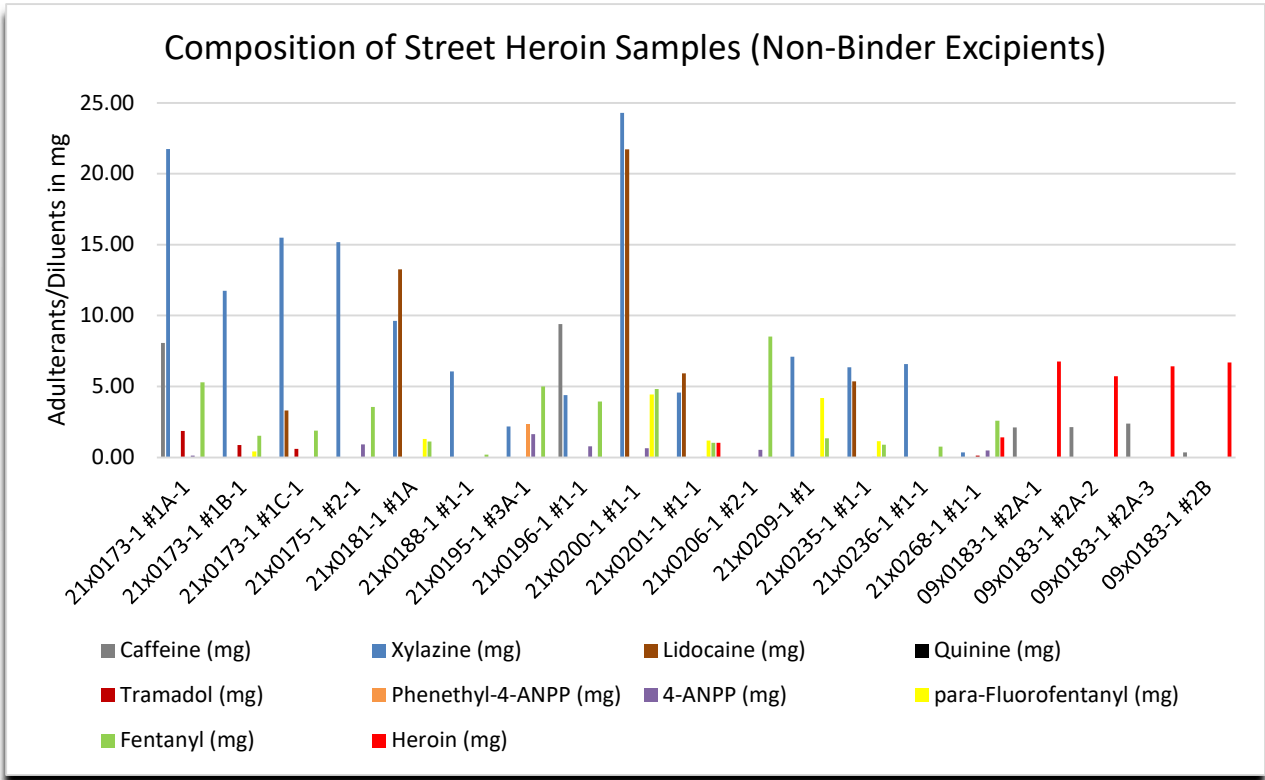


Figure 6: Composition various submitted specimens as targeted psychoactive components

example the range of fentanyl concentration and array of additional psychoactive components present amongst a random selection of submitted case specimens. The *in vivo* opioid agonist activity of para-fluorofentanyl is unknown in human, but likely is on the order of fentanyl itself. The presence of either para-fluorofentanyl or fentanyl along with heroin or any other substance may increase, decrease, or otherwise affect the metabolism, absorption, and elimination of any one or multiple substances causing potentially elevated plasma levels of any

such substance for a longer period. If such compound is fentanyl, heroin, or another opioid, the potential implication to the drug user could result in a lengthened “high” but additionally protracted side effects such as respiratory depression resulting in overdose.

Importantly, *Figure 5* demonstrated that amongst 25 samples, a user may experience a range of 0.0 to 8.5mg (*Figure 7*) of fentanyl in a single glassine or dose notwithstanding other pharmacologically active ingredients. Similarly, concentrations of fentanyl among samples of the same batch of glassines span the spectrum of consistency: some are nearly identical; others vary widely. For example, the three “Primo #1” glassines (*Figure 8A*) were each found to contain approximately 50 mg of powder and contain 9.98%, 10.00%, and 9.66% fentanyl, respectively.



Figure 7: Glassine containing 8.5 mg (19% of net weight) of Fentanyl



Figure 8: (A) “Primo #1” Glassines; (B) “Lemon” Glassines each containing Fentanyl

However, the “Lemon” glassines (*Figure 8B*) were each found to contain approximately 50 mg of powder and contain 9.26%, 5.23%, and 2.31% fentanyl, respectively. Such variance in street drug concentration contributes greatly to overdose risk. Fentanyl is actively used in a medical setting through transdermal patches in microgram (one-thousandth of a milligram) dosage delivery. For example, in chronic pain management the highest transdermal dose fentanyl patch available delivers 100 mcg/hr for a period of 72 hours with a peak analgesic concentration being reached in 12 hours. Oral fentanyl is available through lozenges and oral sprays.

The CDC guidelines¹ suggest that a conversion to Morphine Equivalents (MEs) assist in comparing the various opioids. For every microgram of fentanyl in an oral spray (prescription medication), it is equivalent to an oral dose of 0.18 milligrams of morphine. Therefore, if a drug user *injects* fentanyl (near immediate absorption) at a dose equivalent to that of the “Lady Gaga”-stamped glassine in *Figure 7* (8.5mg), the user is experiencing an equivalent of approximately **1,530 MEs** (that is, 1.53 *grams*) of morphine. According to the CDC, any person taking the equivalent of **98 MEs or more are at risk** of overdose death.

Submitting Agencies

Currently, the following fourteen (14) agencies routinely submit analytical casework requests:

- Cape May City
- Cape May County Prosecutor’s Office
- Cape May County Sheriff’s Office (including Correctional Facility)
- Lower Township
- Middle Township
- Wildwood
- Wildwood Crest
- West Wildwood
- North Wildwood
- Stone Harbor
- Avalon
- Sea Isle City
- Ocean City
- Delaware River and Bay Authority
-

Additionally, the Laboratory receives submissions from outside local, state, and federal agencies to assist in rapid turn-around requests, bulk submissions, and unknown compound identification.

Conclusion

The current drug trends detected within Cape May County are consistent with those reported state-wide and nationally but remain influenced by seasonal tourism. The current trend in Cape May County’s drug harm environment towards increased fentanyl usage (148% increase since 2019) is alarming. Regardless of cannabis legalization, the opioid epidemic is relentless and the concentrations of fentanyl along with the presence of additional drugs present in street samples is akin to poison.

The Laboratory maintains a modern array of instrumentation to provide exacting analyses and ensures ongoing compliance with ISO 17025 which ensures unbiased and accurate results regardless of case complexity. The assimilation of the Health Department and Prosecutor’s Office laboratories is an ongoing project which will eventually allow the disciplines of forensic toxicology and environmental chemistry to be established for the benefit of Cape May County constituents.

¹ CDC: Calculating Total Daily Dose of Opioids for Safer Dosage: https://www.cdc.gov/drugoverdose/pdf/calculating_total_daily_dose-a.pdf

Section Four - 2021 STATISTICAL DATA

Section/Unit Administration
 completing report
 Section IV. 4.b., page 2

County Cape May

Year 2021

DEFENDANTS WITH INDICTMENTS/ACCUSATIONS DISPOSED BY OFFENSE CATEGORY AND MANNER OF DISPOSITION

MANNER OF DISPOSITION										
	Theft	Forgery/ Fraud	Weapons	Child Abuse/ Endanger	Gambling	Wiretap	Obstr. Gov't Oper.	Fail to Register	Other	TOTAL
1. Guilty plea to most serious offense	39	9	22	5	0	0	29	2	8	426
2. Guilty plea to lesser indictable offense	1	1	4	4	0	0	9	0	2	64
3. Ind. dism., plea to dis. persons offense	1	0	2	2	0	0	1	0	0	33
4. Guilty at trial, most serious offense										
a. Jury	0	0	0	0	0	0	0	0	0	0
b. Non-jury	0	0	0	0	0	0	0	0	0	0
5. Guilty at trial, lesser indictable offense										
a. Jury	0	0	0	0	0	0	0	0	0	0
b. Non-jury	0	0	0	0	0	0	0	0	0	0
6. Guilty at trial, dis. persons offense										
a. Jury	0	0	0	0	0	0	0	0	0	0
b. Non-jury	0	0	0	0	0	0	0	0	0	0
7. Not guilty at trial										
a. Jury	0	0	0	0	0	0	0	0	0	0
b. Non-jury	0	0	0	0	0	0	0	0	0	0
8. Acceptance into diversion program	21	3	20	11	0	0	7	0	7	159
9. Dismissed over objection of pros.	0	0	1	1	0	0	1	0	0	3
10. Dismissed pros. motion or consent	11	2	4	1	0	0	6	1	1	74
11. TOTAL dispositions	73	15	53	24	0	0	53	3	18	759

Rev. 1997

Section/Unit Juvenile
(completing report)
Section IV. 9.b.

County: Cape May
Year...: 2021

JUVENILE DELINQUENCY DISPOSED CASES

	Number of Juveniles	Number of Cases	Number of Offenses
Dismissed/Consolidated/Withdrawn			
1. Total Dismissed/Consolidated/Withdrawn during Calendar Year	333	335	454
Diverted Cases			
2. Total Diversions during Calendar Year	8	10	13
Inactivated Cases			
3a. VOP Cases Inactivated	0	0	0
3b. Non-VOP Cases Inactivated	0	0	0
3. Total Inactivations during Calendar Year	0	0	0
Non-VOP Decisions (Mandatory Calendar)			
4a. Adjudicated Delinquent	21	31	111
4b. Adjudicated Not Delinquent	0	0	0
4c. Not Adjudicated Dismissed	5	6	25
4d. Case Returned/Post Adjudication Decision	13	17	82
4. Total Non-VOP Decisions (Mandatory Calendar)	39	54	218
Non-VOP Decisions (Non-Mandatory Calendar)			
5a. Adjudicated Delinquent	0	0	0
5b. Adjudicated Not Delinquent	0	0	0
5c. Not Adjudicated Dismissed	0	0	0
5d. Case Returned/Post Adjudication Decision	1	1	1
5. Total Non-VOP Decisions (Non-Mandatory Calendar)	1	1	1
Non-VOP Decisions (Juvenile Referee)			
6a. Adjudicated Delinquent	7	12	29
6b. Adjudicated Not Delinquent	0	0	0
6c. Not Adjudicated Dismissed	1	1	1
6d. Case Returned/Post Adjudication Decision	1	1	4
6. Total Non-VOP Decisions (Juvenile Referee)	9	14	34
VOP Decisions (1:1)	Mandatory Calendar	Non-Mandatory Calendar	Juvenile Referee
7a. Adjudicated Delinquent	2	0	0
7b. Adjudicated Not Delinquent	0	0	0
7c. Not Adjudicated Dismissed	0	0	0
7d. Case Returned/Post Adjudication Decision	0	0	0
7. Total VOP Decisions	2	0	0

Trials	
8a. Total Number of Trials Where the Assistant Prosecutor Appeared.	0
8b. Total Number of Juveniles Adjudicated Delinquent on One or More Charges at Trial.	0
8c. Total Number of Juveniles Adjudicated Not Delinquent at Trial.	0

Revised for 2021 data

Section/Unit Juvenile
(completing report)
Section IV. 9.a.

County: Cape May
Year...: 2021

JUVENILE DELINQUENCY INTAKE

Filings/New Cases	Number of Juveniles	Number of Cases	Number of Offenses
1. Total New Filings During the Calendar Year	53	82	181
VOP Filings			
2. Total Violations of Probation During the Calendar Year	2	2	2
Returned to Court			
3a. Cases Reactivated	0	0	0
3b. Cases Reopened	16	21	88
3c. Cases Successfully Appealed	0	0	0
3. Total Cases Returned to Court	16	21	88
Transfers			
4a. Entering this county	2	4	14
4b. Leaving this county	12	17	30
4. (Net Change)	-10	-13	-16

5. County Screening Procedures.....: Check the box that most accurately describes the procedure in your county. Do not check more than one box.

- a. Prosecutor's office reviews all new delinquency complaints either before or after diversion. ☒
- b. Prosecutor's office reviews selected delinquency complaints either before or after diversion based on offense charged or other criteria ☐
- c. Prosecutor's office does not screen new delinquency complaints. ☐

6. Violations of Probation Procedures: Check the box that most accurately describes the procedure in your county. Do not check more than one box.

- a. An Assistant Prosecutor appears at all V.O.P. hearings. ☒
- b. An Assistant Prosecutor appears at selected V.O.P. hearings based on offense charged or other criteria. ☐
- c. Assistant Prosecutor's do not at V.O.P. hearings. ☐

Revised for 2021 data

BUDGETS AND EXPENDITURES

ACTIVITY	YEAR	Total Operating Budget (excluding Grants)	Total Grants Funding
1. TOTAL actual expenditures, prior report year (include all County, State and Federal funding)	2020	\$7,417,480.82	\$533,203.43
a. Salaries and Wages		\$6,812,444.78	\$475,222.43
b. Other Expenses		\$605,036.04	\$77,981.00
2. TOTAL Budgeted Appropriations, current report year (include all County, State and Federal funding)	2021	\$7,928,421.00	\$673,577.22
a. Salaries and Wages		\$7,158,494.00	\$528,015.38
b. Other Expenses		\$769,927.00	\$145,561.84

POLICE PURSUIT SUMMARY REPORT

Agency	Cape May County Prosecutor's Office	County	Cape May
Reporting Period	1/1/21 to 12/31/21		
Person completing report	Captain Michael Emmer	Date completed	1/25/22
Phone number	609-465-1135		

1. Number of pursuits initiated	0
2. Number of pursuits resulting in accidents	0
3. Number of pursuits resulting in injuries (NO DEATHS)	0
4. Number of pursuits resulting in death	0
5. Number of pursuits resulting in arrest	0
6. Number of vehicles in accidents	
a. Pursued vehicles	0
b. Police vehicles	0
c. Third party vehicles	0
7. Number of people injured	
a. Pursued vehicles	0
b. Police vehicles	0
c. Third party vehicles	0
d. Pedestrians	0
8. Number of people killed	
a. Pursued vehicles	0
b. Police vehicles	0
c. Third party vehicles	0
d. Pedestrians	0
9. Number of people arrested	0
10. Number of pursuits in which a tire deflation device was used	0

JUVENILE DEFENDANTS WITH BIAS CRIME RELATED CHARGES DISPOSED

		NUMBER CONVICTED				
	TOTAL	PLEA	TRIAL	ACQUITTED	DISMISSED	DOWNGRADE/ REMAND
Number of juveniles disposed	0					
Number of juveniles waived for adult prosecution	0					
Number of juveniles for whom application for extended term of imprisonment made	0					
Number of juveniles for whom application was granted	0					
Number of juveniles for whom application was denied	0					
Number of juveniles for whom simple assault was upgraded to 4th degree crime	0					
Number of juveniles for whom harassment was upgraded to 4th degree crime	0					
Number of juveniles who had both an upgrade to a 4th degree crime and an application for extended terms	0					

Rev. 1992

ADULT DEFENDANTS WITH BIAS CRIME RELATED CHARGES DISPOSED

	TOTAL	NUMBER CONVICTED		ACQUITTED	DISMISSED	DOWNGRADE/ REMAND
		PLEA	TRIAL			
Number of defendants disposed	1				1	
Number of defendants for whom application for extended term of imprisonment made	0					
Number of defendants for whom application was granted	0					
Number of defendants for whom application was denied	0					
Number of defendants for whom simple assault was upgraded to 4th degree crime	0					
Number of defendants for whom harassment was upgraded to 4th degree crime	1					
Number of defendants who had both an upgrade to a 4th degree crime and an application for extended terms	0					

MISCELLANEOUS ACTIVITIES

ACTIVITY	NUMBER	VALUE
1. Notice of intention to solicit funds received		
2. Expungement applications received	448	
3. TOTAL number of forfeiture actions	21	
4. Number of motor vehicles obtained through forfeiture actions	1	
5. TOTAL value of property forfeited (add a. – c.)		\$87,404.27
a. Cash forfeited		\$73,531.27
b. Value of forfeited motor vehicles		\$13,873.00
c. Value of other forfeited property		\$0
(Specify property)		
2014 Dodge Charger		
Trailer		

Section/Unit Victim WitnessCounty Cape May

completing report

Section IV. 11.b.

Year 2021

VICTIM/WITNESS ASSISTANCE SERVICES PROVIDED

VICTIM/WITNESS ASSISTANCE SERVICES	SERVICE PROVIDED TO			
	VICTIMS		WITNESSES	
	Juvenile Cases	Adult Cases	Juvenile Cases	Adult Cases
INFORMATION AND REFERRAL SERVICES				
Introductory brochure	X	X		
Criminal Justice system orientation	X	X	X	X
Case information	X	X	X	X
VCCB referral	X	X		
Social service information/referral	X	X	X	X
Crime prevention information/referral	X	X	X	X
Property return information	X	X		
Witness fee information	X	X	X	X
Public education, community awareness	X	X	X	X
LOGISTIC SERVICES				
Stand-by subpoena and call	X	X	X	X
Witness waiting area	X	X	X	X
Response to witness intimidation, harassment	X	X	X	X
Restitution recommendation at sentencing	X	X		
VCCB claim assistance	X	X		
Social service intervention	X	X	X	X
Employer/student intervention	X	X	X	X
Travel, lodging assistance	X	X		
Transportation assistance	X	X	X	X
Child care assistance	X	X	X	X
Property return assistance	X	X		
Witness fee assistance	X	X	X	X
Victim impact statement assistance	X	X		
Counseling				
Other (specify) RELEASE INFORMATION	X	X		
ASSISTANCE-DV MUNICIPAL COURT		X		

Section/Unit Victim Witness
 completing report
 Section IV, 11.a.

County Cape May
 Year 2021

VICTIM/WITNESS NOTIFICATION SERVICES

NOTIFICATION SERVICES	NOTIFICATION PROVIDED TO					
	VICTIMS		Lay WITNESSES		Law Enforcement WITNESSES	
	YES	NO	YES	NO	YES	NO
Initial contact	X			X		X
Administrative dismissal	X			X	X	
Remand to municipal court	X			X	X	
Indictment returned	X			X	X	
No bill	X			X	X	
Acceptance into pre-trial intervention	X			X	X	
Guilty plea	X			X	X	
Not guilty at trial	X			X	X	
Guilty at trial	X		X		X	
Indictment dismissed	X			X	X	
Sentence	X		X		X	
Parole	X			X		X
Disposition of juvenile cases	X			X		X
Other (specify) Pre Trial Proceedings	X			X	X	

Rev. 1995

JUVENILE WAIVER DECISIONS

1. Voluntary Waivers at Juvenile's Request	0
2. Juvenile Waiver Motions by Prosecutor	
a. Pending at Beginning of Year	0
b. Motions Filed by Prosecutor this Year	0
3. Juvenile Waiver Decisions (Prosecutor's Motions)	
a. Waived on Prosecutor's Motion with Juvenile's Consent	0
b. Waived on Prosecutor's Motion without Juvenile Consent and after a Hearing	0
c. Motion Voluntarily Withdrawn by Prosecutor	0
d. Waivers Denied	0
e. Total Decisions (sum of 3a through 3d)	0
4. Juvenile Waiver Motions filed by Prosecutor Pending at Year's End (2.a. + 2.b. - 3.e.)	0

Section/Unit AdministrationCounty Cape Maycompleting report
Section IV. 4.b.Year 2021

DEFENDANTS WITH INDICTMENTS/ACCUSATIONS DISPOSED BY OFFENSE CATEGORY AND MANNER OF DISPOSITION

MANNER OF DISPOSITION	OFFENSE CATEGORIES										
	Homicide	Kidnap- ping	Sexual Assault	Robbery	Arson	Assault	Burglary	Bribery	Narcotics	Official Miscon- duct	Perjury/ Falsifi- cation
1. Guilty plea to most serious offense	5	5	6	10	14	60	34	0	178	0	0
2. Guilty plea to lesser indictable offense	0	2	4	5	2	15	8	0	7	0	0
3. Ind. dism., plea to dis. persons offense	0	1	0	0	2	17	1	0	6	0	0
4. Guilty at trial, most serious offense											
a. Jury	0	0	0	0	0	0	0	0	0	0	0
b. Non-jury	0	0	0	0	0	0	0	0	0	0	0
5. Guilty at trial, lesser indictable offense											
a. Jury	0	0	0	0	0	0	0	0	0	0	0
b. Non-jury	0	0	0	0	0	0	0	0	0	0	0
6. Guilty at trial, dis. persons offense											
a. Jury	0	0	0	0	0	0	0	0	0	0	0
b. Non-jury	0	0	0	0	0	0	0	0	0	0	0
7. Not guilty at trial											
a. Jury	0	0	0	0	0	0	0	0	0	0	0
b. Non-jury	0	0	0	0	0	0	0	0	0	0	0
8. Acceptance into diversion program	0	1	2	0	11	32	6	0	37	0	1
9. Dismissed over objection of pros.	0	0	0	0	0	0	0	0	0	0	0
10. Dismissed pros. motion or consent	2	1	0	2	1	8	1	0	33	0	0
11. TOTAL dispositions	7	10	12	17	30	132	50	0	261	0	1

Rev. 1997

DEFENDANTS PENDING DISPOSITION OF CHARGES BY AGE OF INDICTMENT OR ACCUSATION

AGES OF POST-INDICTMENT DEFENDANT CASES FROM DATE OF INDICTMENT OF ACCUSATION	NUMBER OF DEFENDANTS	
	ACTIVE	INACTIVE/FUGITIVE
1. 0 to 3 months	179	0/16
2. 3+ to 6 months	175	0/31
3. 6+ to 9 months	84	0/26
4. 9+ to 12 months	89	0/45
5. 12+ to 24 months	68	0/63
6. 24+ months	51	5/681
7. TOTAL post-indictment/accusation defendant cases pending	646	5/682

**DEFENDANTS COMPLETING THE
GRAND JURY PROCESS
AND ACTION TAKEN**

ACTION TAKEN	NUMBER OF DEFENDANTS
1. Defendants presented to the grand jury	1,041
2. Defendants indicted	1,041
3. Defendants no billed and remanded to municipal court	0
4. Defendants no billed/no action	0
5. TOTAL defendants completing the grand jury process	1,041

DEFENDANTS CHARGED BY ACCUSATION

	NUMBER OF DEFENDANTS
TOTAL Defendants charged through Accusation	107

**DEFENDANTS PENDING GRAND JURY PROCESS
(Pre-Indictment Defendant Cases)
BY AGE OF COMPLAINT**

AGES OF PRE-INDICTMENT DEFENDANT CASES FROM DATE OF COMPLAINT	NUMBER OF DEFENDANTS	
	ACTIVE	INACTIVE/FUGITIVE
1. 0 to 1 month	60	0/0
2. 1+ to 2 months	65	0/0
3. 2+ to 3 months	48	0/2
4. 3+ to 4 months	40	0/2
5. Over 4 months	124	0/6
6. TOTAL defendant cases pending grand jury	337	0/10

DEFENDANT APPLICATIONS FOR DIVERSION PROGRAM, ACTION TAKEN AND OUTCOME

Pre-trial Intervention Diversion Program

	Number of DEFENDANT APPLICATIONS FOR PRE- TRIAL INTERVENTION	
	PRE-INDICTMENT	POST-INDICTMENT
1. Applications reviewed	0	153
2. Recommended for acceptance	0	152
3. Recommended for rejection	0	2
4. Accepted into program	0	152

PROSECUTORIAL SCREENING OF DEFENDANTS

SCREENING OUTCOMES	STAGE OF THE CRIMINAL JUSTICE PROCESS WHEN DECISION OCCURS	
	PRE-COMPLAINT DECISIONS	POST-COMPLAINT DECISIONS
a. Defendants administratively dismissed		76
b. Defendants with charges downgraded to disorderly persons offenses		224
c. Defendants accepted for pre-trial diversion		152
d. Defendants otherwise screened out		47
e. Defendants with change of venue		3
f. Accusations filed		107
g. Defendants with either indictable complaints authorized or charges approved for grand jury		347
h. AOC Correction: Defendants who completed grand jury		564
TOTAL SCREENING DECISIONS FOR YEAR (add a - h)		1,520

Section/Unit Appellate

County Cape May

completing report

Section IV. 8.b.

Year 2021

APPELLATE WORKLOAD AND DISPOSITIONS Law Division

APPELLATE WORKLOAD AND DISPOSITIONS/OUTCOMES	MUNICIPAL COURT APPEALS -- BY TYPE OF VIOLATION					TOTAL
	Criminal	Disorderly Persons	Motor Vehicle	Municipal Ordinances	Other	
1. Appeals pending at beginning of year	0	1	2	0	0	3
2. Notices of appeal received/filed	0	1	1	0	0	2
3. Appellate motions, motion responses filed	0	0	0	0	0	0
4. Appellate briefs filed	0	0	1	0	0	1
5. TOTAL APPEALS DISPOSED	0	2	3	0	0	0
a. Conviction or order affirmed	0	1	2	0	0	3
b. Conviction or order reversed	0	0	0	0	0	0
c. Remanded or judgment modified	0	0	0	0	0	0
d. Withdrawn or dismissed	0	0	0	0	0	0
6. Appeals pending at the end of the year	0	1	1	0	0	2

Rev. 2015

Section IV. 8a

APPELLATE WORKLOAD AND DISPOSITIONS

Appellate Division and Other Appellate Courts

APPELLATE WORKLOAD AND DISPOSITIONS/OUTCOMES	Appellate Division Appeals						NJ Supreme Court Appeals	U.S. and Other Court Appeals (specify court)	TOTAL
	Criminal referral cases	Other criminal appeals	Criminal Interlocutory	Juvenile	Law Division (de novo)	Civil			
1. Appeals pending at beginning of the year	61	0	7	1	0	0	4	0	73
2. Notices of appeal received/ filed	9	2	14	0	1	0	5	1	32
3. Appellate motions, motion responses filed	0	0	0	0	0	0	0	0	0
4. Appellate briefs filed	8	1	16	0	0	0	6	0	31
5. STATE Appeals and - TOTAL DISPOSED Cross Appeals	3	0	0	0	0	0	1	0	4
a. Conviction or order affirmed	2	0	0	0	0	0	0	0	2
b. Conviction or order reversed	0	0	0	0	0	0	1	0	1
c. Remanded or judgment modified	0	0	0	0	0	0	0	0	0
d. Withdrawn or dismissed	1	0	0	0	0	0	0	0	1
e. Affirmed in part/Reversed and or remanded in part	0	0	0	0	0	0	0	0	0
6. DEFENSE Appeals - TOTAL DISPOSED	37	1	20	1	1	0	7	0	67
a. Conviction or order affirmed	15	0	11	1	1	0	7	0	35
b. Conviction or order reversed	2	0	1	0	0	0	0	0	3
c. Remanded or judgment modified	6	1	0	0	0	0	0	0	7
d. Withdrawn or dismissed	11	0	3	0	0	0	0	0	14
e. Affirmed in part/Reversed and or remanded in part	3	0	5	0	0	0	0	0	8
7. Appeals pending at the end of the year	30	1	1	0	0	0	1	1	34

Rev. 2015

DISPOSITIONS OF ORIGINAL INVESTIGATIONS RESULTING IN CRIMINAL CHARGES

DISPOSITION OF ORIGINAL INVESTIGATIONS RESULTING IN CRIMINAL CHARGES	NUMBER OF DEFENDANTS
1. Defendants charged by complaint, TOTAL	51
a. Defendants with complaints administratively dismissed	3
b. Defendants with complaints downgraded to disorderly persons offenses	0
c. Defendants with complaints referred to Family Court	0
d. Defendants with complaints presented to grand jury	39
2. Defendants with original charges presented to grand jury on direct presentment	1
3. Defendants charged through accusation	8
4. Defendants completing grand jury process on direct presentment and complaint presentation, TOTAL	67
a. Defendants indicted	67
b. Defendants no billed and remanded to municipal court	0
c. Defendants no billed/no action	0

Section/Unit IT
 completing report
 Section IV, 7.a.

County Cape May
 Year 2021

INVESTIGATIVE WORKLOAD AND DISPOSITIONS

INVESTIGATIVE WORKLOAD AND DISPOSITIONS	NUMBER OF INVESTIGATIONS BY TYPE -- Original and Post-complaint investigations						
	Original Investigations Conducted Jointly With:				Original Exclusive Investigations	TOTAL Original Investigations	TOTAL Post-complaint Investigations
	Local Police	State Agency	Other County Prosecutor	Other Agency			
1. Investigations pending or inactive at the beginning of the year	226	18	7	12	254	517	18
2. Investigations opened during the year	106	14	4	6	84	214	36
3. TOTAL Investigative workload for the year (add nos. 1 - 2)	332	32	11	18	338	731	54
4. TOTAL Investigations completed during this year (add a. - d.)	117	13	7	1	89	227	39
a. Resulting in criminal charges	4	0	0	0	6	10	39
b. Referred to other agency for criminal prosecution	0	0	0	0	0	0	0
c. Referred to other agency for civil or administrative action	4	1	0	0	5	10	0
d. Closed - No further action	109	12	7	1	78	207	0
5. Investigations pending or inactive at the end of the year	215	19	4	17	249	504	15

Rev. 1995

**POST-CONVICTION ACTIVITIES
AND MISCELLANEOUS COURT ACTIVITIES
BY TYPE AND OUTCOME**

POST CONVICTION ACTIVITY AND OUTCOME	NUMBER
1. Krol hearings involving the prosecutor's office	14
2. TOTAL post-conviction relief applications/briefs filed involving the prosecutor's office	15
a. Defendants granted relief	4
b. Defendants denied relief	6
c. Defendants granted relief in part/Denied relief in part	0
d. Defendants dismissed/Withdrawn	3
3. TOTAL habeas corpus petitions/briefs filed involving the prosecutor's office	3
a. Defendants granted relief	0
b. Defendants denied relief	2
c. Defendants granted relief in part/Denied relief in part	0
d. Defendants dismissed/Withdrawn	0