

2025

AT NORTH SHORE ARTS

2025 SEASON PROSPECTUS

APR 29 - NOV 9



BOARD OF TRUSTEES

PRESIDENT OF THE BOARD

Mary Rose O'Connell

VICE PRESIDENT

Daniel Lyman

SECRETARY

Susan Ellis

TREASURER

George Darcy

HOUSE CHAIR

Steve Howard

ADDTL. BOARD MEMBERS

Steve Kennedy

Robert Frascella

Marion Rayner

Steve Wetzel

Jeff Fioravanti

Karen Fitzgerald

Michele O'Neil

Steven Simpson

EXHIBITION JURY

Carmela Martin

Sandra Kavanaugh

Shelly Eager

William Gotha

Lynne Mehlman

Trudy Allen

Katherine Coakley

Pamela Bearor-Amiralian

Susan Guest-McPhail

Olga Hayes

FINANCIAL ADVISOR: Ed Dove

Jennifer McCalmont

Carolyn Latanision

Charlotte Roberts

Carol Robey

Alternates:

Orentas Balaisis

Rocky Forsyth

Linda Kauss

Teri Gambardella

NEW MEMBER JURY

Dave Kaphammer

Andrew Anderson-Bell

Joan Bediz

Carolyn Jundzilo

Dennis Poirier

Larry Grob

Joyce Wood

Alternates:

Susanne Larkham

Heidi Jackson

Vanessa Michalak

DJ Kolodziej Stawasz

Sara Oseasonh

CURRENT STAFF

Sarah Milton, Executive Director

Gilad Gerber, Gallery Associate

Ansa Stamper, Gallery Associate

Dulcinea Lacey, Gallery Associate

EXHIBITION LIST

SPRING

APR 29 - OCT 4

APR 29 - MAY 23

APR 29 - MAY 23

MAY 30 - JUN 19

MAY 31 - JUN 21

SHOWROOM

EXHIBITION 1

ASSOCIATE SPRING SHOW

CONVERGENCE DIVERGENCE

EXHIBITION 2

SUMMER

JUN 28 - JUL 26

JUL 11 - AUG 3

JUL 11 - SEPT 27

AUG 2 - AUG 30

AUG 9 - AUG 23

EXHIBIT NEW ENGLAND

BELLEROUCHE & SARGENT

EMERGING ARTISTS OPEN SHOW

EXHIBITION 3

SILENT AUCTION

FALL

SEPT 5 - OCT 4

SEPT 16 - OCT 4

OCT 9 - OCT 12

OCT 17 - NOV 9

OCT 22 - NOV 9

OCT 24 - NOV 9

STUDY EXHIBIT

ASSOCIATE FALL SHOW

CAPE ANN PLEIN AIR

SYNERGY

FIGURE STUDY GROUP SHOW

NEW ARTIST MEMBER SHOW

COVER ARTWORK: Marian Williams Steele, *Lane's Cove*, Oil on Canvas

Frank Federico, *Untitled*, Oil

* NOTE: Please register artwork online and view our exhibition policies prior to artwork drop-off. Registration paperwork can be found by visiting the link below:

nsarts.org/member-info/tools/online-exhibition-registration-form/

COLOR KEY:

- ARTIST MEMBERS ONLY
- ASSOCIATE MEMBERS ONLY
- OPEN CALL

A P R 29 **SHOWROOM** *(Artist Members Only)*

DROP-OFF: APRIL 18 & 19 • 10AM - 4PM

RECEPTION: MAY 2 • 5PM - 7PM

PICK-UP: OCTOBER 6 (12PM - 4PM), 8-9 (10AM - 4PM)

OCT 4

Artist Members Only! Each member is allowed to display up to **2 works at a time** in our Showroom gallery, all season long. Please register your work online prior to drop-off.

A P R 29 **EXHIBITION 1** *(Artist Members Only)*

This exhibition is juried | 2 artworks per artist

DROP-OFF: APRIL 18 & 19 • 10AM - 4PM

RECEPTION: MAY 2 • 5PM - 7PM

PICK-UP: MAY 23 & MAY 24 • 10PM - 4PM

MAY 22

► Awards continued on PG. 4

EXHIBITION 1 AWARDS

Grumbacher Award of Distinction

for Excellence in Any Medium, \$600

Institution for Savings Award

for Excellence in Any Medium, \$250

BankGloucester Award

for Excellence in Any Medium, \$250

Cape Ann Savings Bank

for Excellence in Any Medium, \$250

Betty Lou Schlemm Memorial Award

for Excellence in Watercolor, \$200

and Manship Artist Residency

Beauport Hotel Award

for Excellence in Any Medium, \$200

Jane Rotenberg Moss Memorial Award

for Excellence in Contemporary Art, \$200

Jon E. Erickson Memorial Award

for Excellence in Graphics, \$100

Howard Curtis Memorial Award

for Excellence in Painting, \$100

Ginger Greenblatt Memorial Award

for Excellence in Any Medium, \$100

Robert B. Donnelly, Jr., MD Memorial Award

for Excellence in Watercolor, \$100

Art Supplies Wholesale Award *for Excellence in Any Medium (Gift Certificate, \$50)*

Popular Award, \$50

A P R 29 **ASSOCIATE SPRING SHOW**

2 artworks per artist

DROP-OFF: APRIL 18 & 19 • 10AM - 4PM

RECEPTION: MAY 2 • 5PM - 7PM

MAY 22

PICK-UP: MAY 23 & MAY 24 • 10PM - 4PM

AWARDS

Dixie Clark Memorial Award *for Excellence in Landscape or Seascape Painting in Any Medium, \$100*

for Excellence in Any Medium, \$100

Louise Demeter Memorial Award

for Excellence in Any Medium, \$75

Art Supplies Wholesale Award *for Excellence in Any Medium (Gift Certificate, \$50)*

for Excellence in Any Medium (Gift Certificate, \$50)

Blick Art Materials Award *for Excellence in Any Medium (Gift Certificate, \$50)*

for Excellence in Any Medium (Gift Certificate, \$50)

Artist & Craftsman Supply Award

for Excellence in Any Medium (Gift Certificate, \$50)

(Gift Certificate, \$50)

M A Y 30 **CONVERGENCE DIVERGENCE**

A WATERCOLOR EXHIBITION

RECEPTION: MAY 31 • 1 - 3 PM

JUN 19

A celebration of working in watercolor! Six local watercolorists and NSAA members showcase the vibrancy of this incredible medium.

M A Y **EXHIBITION 2** (Artist Members Only)

31 ****This exhibition is juried | 2 artworks per artist****

DROP-OFF: MAY 23 & 24 • 10AM - 4PM

RECEPTION: MAY 31 • 1 - 3 PM

JUN 21 PICK UP: JUNE 22 & 23 • 10AM - 4PM

AWARDS

The Vermont Community Foundation Alden Bryan Memorial Award and Medal for a Traditional Landscape in Oil, \$1,000

Rosamond Smith Bouve` Memorial Award in Memory of Rosamond Wilder Smith Bouve` for Traditional Portait, Cityscape, Urban Place, \$500

Cape Ann Savings Bank Award for a New Artist Member, \$250

Andrew and Carlie Menna Memorial Award for a Rockport theme, \$250

In Memory of Vail Pagliarani, \$200

Terry Ludwig Pastel Award for Excellence in Pastel (Gift Certificate, \$180)

The Guild of Boston Artists Award for Excellence in Tradition Painting in Memory of Harry Senger, \$150

Guerilla Painter Merchandise Award

for Excellence in Painting (Artist Materials)

Art Supplies Wholesale Award for Excellence in Any Medium (Gift Certificate, \$50)

Popular Award, \$50

Betty Lou Schlemm, *Untitled*, Watercolor

SUMMER ■ JULY - AUGUST



J U N
28

exhibit **NEW' ENGLAND 25**

JUL 26 ****This exhibition is juried | 2 artworks per artist****

ONLINE SUBMISSION DEADLINE: MAY 24 BY 11:59PM

NOTICE OF ACCEPTANCE: JUNE 4

DEADLINE FOR DELIVERY OF SHIPPED ARTWORKS: JUNE 21 BY 5PM

ARTWORK DROP-OFF: JUNE 22 - 23 • 10AM - 4PM

RECEPTION: JUNE 29 • 1PM - 3PM

ARTWORK PICK UP: JULY 27 (12PM - 4PM), JULY 28 (10AM - 4PM)

EXHIBIT NEW ENGLAND AWARDS

Charles Family Foundation Award for Outstanding Artistic Accomplishment , \$1,000

The Vermont Community Foundation Alden Bryan Memorial Award and Medal for Traditional Landscape Painting in Oil, \$500

The Vermont Community Foundation Mary Bryan Memorial Award and Medal for Contemporary Representational or Semi-Realistic Watercolor, \$500

Coakley Family Award for an Expressive, Experimental Painting, \$500

Excellence in Soft Pastel, \$500

Gamblin Artist Colors Co. Merchandise Certificate for Excellence in Any Medium (Merchandise Gift Package)

NSAA Board of Trustees Award for Excellence in Any Medium, \$300

Bank Gloucester Award for Excellence in Any Medium, \$250

Brookline Bank Award for Excellence in any Medium, \$250

Lee Queen Memorial Award for an Outstanding Watercolor, Given by Chris Queen, Court Queen, and Hilary MacGrath, \$250

Institution for Savings Award for Excellence in Any Medium, \$250

Parco Fine Arts Award for Cape Ann Landscape or Seascape in Oil, \$250

Jack Richeson & Co., Inc., Award (Art Materials)

In Memory of Marylin Lincoln, \$200

In Memory of Bob Watson, \$200

In Memory of Charles Fields, \$200

Milton Provoncha Family Award for an Outstanding Work of Art in Any Medium, \$150

New England Watercolor Society for Excellence in Watercolor, \$150

Whistler House Museum of Art Award for Excellence in Any Medium, \$100

O'Connell Family Memorial Award for Excellence in Traditional Painting, \$100

Golden Artist Colors Art Materials Award (Gift Certificate, \$100)

Van Gogh's Gear for Excellence in Any Medium (Gift Certificate, \$50)

Art Supplies Wholesale Award for Excellence in Any Medium (Gift Certificate, \$50)

Popular Award, \$50

J U L
11
BELLEROUCHE & THE JOHN SINGER
SARGENT CONNECTION
RECEPTION: JULY 11 • 5PM - 8PM

-
AUG 3
Celebrating the collaboration between two legendary artists:
Belleruche and John Singer Sargent.

J U L
11
EMERGING ARTIST
OPEN SHOW

-
SEPT 27
This exhibition is juried | 3 artworks per artist
ONLINE SUBMISSION DEADLINE: JUNE 6 AT 11:59 PM
NOTICE OF ACCEPTANCE: JUNE 13
DROP-OFF: JULY 5 (10AM - 4PM) & JULY 6 (12PM - 4PM)
OPENING RECEPTION: JULY 19 • 5 - 7PM • SARGENT HOUSE MUSEUM
PICK-UP: SEPTEMBER 28 (10AM - 4PM)

AWARDS

Holbein Watercolor Materials Award
Artist Materials
NSAA Solo Show Award
for Excellence in Any Medium
Solo show at NSAA in 2026
Beauport Solo Show Award
for Excellence in Any Medium
Solo show at the Beauport Hotel in 2026

Gordon Grant, *Untitled*, Watercolor

NSAA Associate Membership Award
for Excellence in Any Medium
Associate Membership for 1 Year
Art Supplies Wholesale Award
for Excellence in Any Medium
(Gift Certificate, \$50)
Blick Art Materials Award
for Excellence in Any Medium
(Gift Certificate, \$50)
Artist & Craftsman Supply Award
for Excellence in Any Medium
(Gift Certificate, \$50)



A U G
09
SILENT AUCTION *(Artist Members Only)*
2 artworks per artist

-
AUG 23
DROP-OFF: AUGUST 5 & 6 • 10AM - 4PM
RECEPTION: AUGUST 23 • 1PM - 3PM
BIDDING ENDS: AUGUST 23, 3PM
PICK-UP: AUGUST 24 (12PM - 4PM) & AUGUST 25 (10AM - 4PM)

Minimum Starting Bid: \$150

Minimum Bidding Increments: \$25

Bidding in-person and over the phone only. Call us at 978.283.1857 for assistance. Full details and artist registration will be available on our website later this season.

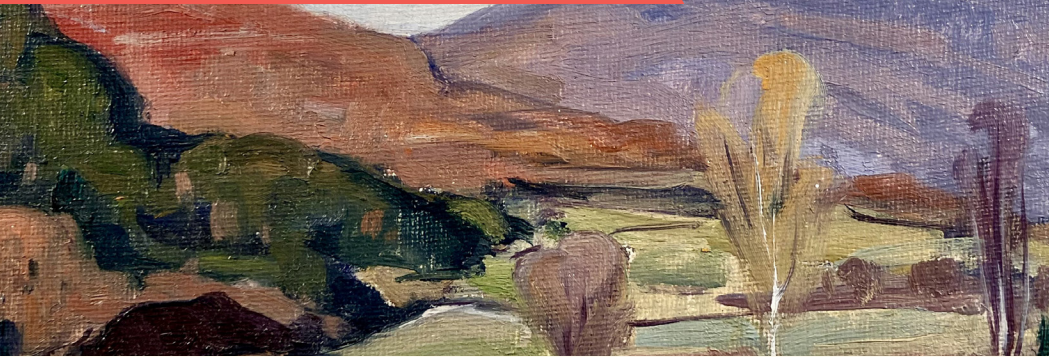
A U G
02
EXHIBITION 3 *(Artist Members Only)*
This exhibition is juried | 2 artworks per artist

-
AUG 30
DROP-OFF: JULY 27 (12PM - 4PM), JULY 28 (10AM - 4PM)
RECEPTION: AUGUST 2 • 1PM - 3PM
PICK-UP: AUGUST 31 (12PM - 4PM), SEPTEMBER 1 (10AM - 4PM)

AWARDS

The Vermont Community Foundation Mary Bryan Memorial Award and Medal
for Excellence in Watercolor, \$1,000
Marguerite Phillips Neuhauser Shafer Memorial Award
for Representational Oil Painting of or from East Gloucester, Rocky Neck, The Working Waterfront, or the Fort Neighborhood (Commercial Street, Cape Ann Pond Ice, Warehouses, or Greasy Pole Awards Posting Wall), \$1,000
Barbara Donnelly Memorial Award
for an Outstanding Watercolor, \$300
Rosemary & Co. Artist Materials Award
Gift Certificate, \$240

Charles Movalli Memorial Award and Gold Medal
for Excellence in Painting, \$200
In Memory of Charles Shurcliff, \$200
Harold Rotenberg Memorial Award
for Innovation in Painting, \$200
Robert Stephenson Memorial Award
Given by Tom and Gloria Nicholas for Excellence in Any Medium, \$100
Georgianna Waterhouse Memorial Award
for Excellence in Painting, \$100
Margaret Brown Memorial Award
for an Outstanding Work of Art, \$100



Alden Bryan, *Vermont*, Oil on Masonite

SEPT 05 **FORMATION TO FINALE:**

A JOURNEY THROUGH SKETCHES AND MASTERPIECES

***2 artworks per artist** | (Artist Members Only)*

DROP-OFF: AUGUST 31 (12PM - 4PM), SEPTEMBER 1 (10AM - 4PM)

RECEPTION: SEPTEMBER 20 · 1PM - 3PM

PICK-UP: OCTOBER 5 (12PM - 4PM), OCTOBER 7 & 8 (10AM - 4PM)

A unique **non-juried** exhibition opportunity for Juried Artist Members to allow viewers a peek inside their artistic process. From sketches and studies to the finished masterpiece, visitors have the chance to see the work that goes into making a piece of art.

SEPT 16 **ASSOCIATE FALL SHOW**

2 artworks per artist

DROP-OFF: SEPTEMBER 12 & 13 · 10AM - 4PM

RECEPTION: SEPTEMBER 20 · 1PM - 3PM

PICK-UP: OCTOBER 5 (12PM - 4PM), OCTOBER 7 & 8 (10AM - 4PM)

AWARDS

Grumbacher Award of Distinction

for Excellence in Any Medium, \$200

Holbein Acrylic Materials Award

for Excellence in Any Medium (Art Materials)

Jack Richeson & Co., Inc., Award

for Excellence in Any Medium (Art Materials)

Art Supplies Wholesale Award

for Excellence in Any Medium

(Gift Certificate, \$50)

Blick Art Materials Award *for Excellence*

in Any Medium (Gift Certificate, \$50)

OCT
04
-
OCT 12

**CAPE ANN
PLEIN AIR**

APPLICATION DEADLINE: APRIL 1, 2025



For nearly two centuries, Cape Ann, Massachusetts has been a destination for some of the finest painters who paint en plein air. Throughout its five picturesque seaside communities, Cape Ann Plein Air will host its ninth annual week-long plein air painting celebration in October when the famous Cape Ann light shines at its very best. Organized by the Cape Ann Plein Air Board of Directors, the communities will see 35 of the finest plein air artists in the nation compete for over \$20,000 in prizes and awards while raising awareness of the importance of plein air painting and raising the visibility of the creative economy on Cape Ann, the birthplace of American Plein Air painting.

EVENTS SCHEDULE *(Details subject to change):

OCT 4 8AM - 7PM	REGISTRATION
OCT 4 7PM	ALL ARTIST WELCOME AND MEETING
OCT 4 - 9	ARTISTS PAINT EN PLEIN AIR
OCT 9	PAINTING DROP-OFF (3 PIECE MINIMUM)
OCT 10	AWARDS GALA
OCT 11	QUICK DRAW
OCT 12	GALLERY WALKS, ROUND-TABLE, ETC.

AWARDS

1st Place, \$6,000

(plus entry into CAPA25)

2nd Place, \$4000

(plus entry into CAPA25)

3rd Place, \$2000

(plus entry into CAPA25)

Greg LaRock Memorial Artist Choice, \$1,000

(plus entry into CAPA25)

Best Cape Ann Abstract, \$1,000

Best Americana, \$500

Best Use of Perspective, \$500

Best Seascape, \$500

Best Nocturne, \$500

Best Marine, \$500

Best Maritime Activity, \$500

Best Working Waterfront, \$500

BECOME AN

ARTIST MEMBER!

ACCEPTING NEW APPLICANTS ON OCTOBER 18 & 19

Once each year NSAA accepts applicants for Juried Artist Member for the fine arts of painting, graphics and sculpture. Interested artists are required to submit 5 pieces, a complete application, and a small application fee in order to qualify for consideration. The jury process is anonymous and New Artist Members are selected solely on the merit of their work. Further details will be available via our website.

NEW MEMBER JURY

Dave Kaphammer

Andrew Anderson-Bell

Joan Bediz

Carolyn Jundzilo

Dennis Poirier

Larry Grob

Joyce Wood

Alternates:

Susanne Larkham

Heidi Jackson

Vanessa Michalak

DJ Kolodziej Stawasz

Sara Oseasohn

OCT 24 - NOV 9 NEW MEMBER SHOW

DROP-OFF: OCTOBER 18 (10AM - 4PM) & OCTOBER 19 (12PM - 4PM)

JURY FOR ACCEPTANCE: OCTOBER 21 • 10AM - FINISH

NOTICE OF ACCEPTANCE: OCTOBER 22

PICK UP FOR NON-ACCEPTED WORK: OCTOBER 23 & 24 • 10AM - 4PM

RECEPTION: OCTOBER 25 • 1PM - 3PM

PICK-UP: NOVEMBER 11-13 • 10AM - 4PM

CRITIQUE: NOVEMBER 1 • 10AM - FINISH

For additional information, please visit:

nsarts.org/member-info/become-a-member/

OCT 17 - NOV 9

SYNERGY

NSAA is once again offering the opportunity for NSAA Artist and Associate Members to take part in Synergy. This is a chance to display as many artworks as you can reasonably fit within a designated 5'w x 6'h' wall space (or display table if applicable upstairs in our Main Gallery, and downstairs in our Showroom. Think of it as a mini solo show! Registration fee is \$50. Space has been expanded to 55 participants (one space per person) and will be accepted on a first-come basis. Each wall space is assigned by the staff at random.

INSTALLATION: OCTOBER 14 - 16 • 10AM - 4PM

RECEPTION: OCTOBER 25 • 1PM - 3PM

PICK-UP: NOVEMBER 11 - 13 • 10AM - 4PM

OCT 22 - NOV 9

FIGURE STUDY GROUP SHOW

DROP-OFF: OCTOBER 17 • 10AM - 4PM

RECEPTION: OCTOBER 25 • 1PM - 3PM

PICK-UP: NOVEMBER 11 - 13 • 10AM - 4PM

NSAA's second annual exhibition for works solely from the weekly Figure Study Group. Each artist may submit 1 large work (*cannot exceed 36" x 36"*) or up to 2 small works (*16" x 20" or smaller*).

NOV 08 - NOV 9

Holiday Pop-Up!

CLOSING WEEKEND!

In partnership with our friends at the Cape Ann Artisans!

Cape Ann ARTISANS

Hilary Baldwin <i>BankGloucester</i>	JANUARY 7 - FEBRUARY 28
Olga Hayes Beauport Hotel	FEBRUARY 15 - MARCH 14
Mike Berlinski <i>BankGloucester</i>	MARCH 3 - APRIL 25
Ted Bidwell Beauport Hotel	MARCH 15 - APRIL 14
Ansa Stamper Beauport Hotel	APRIL 15 - MAY 14
Michele O'Neil Beauport Hotel	MAY 15 - JUNE 14
Sandra Kavanaugh NSAA • Hallway Gallery	MAY 27 - JUNE 15
Robert Frascella Beauport Hotel	JUNE 15- JULY 14
Adam LoRusso NSAA • Hallway Gallery	JUNE 17 - JULY 6
Paula Borsetti NSAA • Gordon Grant Room	JUNE 23 - JULY 6
John Marshall Beauport Hotel	JULY 15 - AUGUST 14
Richard Giedd NSAA • Hallway Gallery	AUGUST 9 - AUGUST 23
Margo Cascella Beauport Hotel	AUGUST 15 - SEPTEMBER 14
Row Selman <i>BankGloucester</i>	AUGUST 19 - OCTOBER 10

Michele O'Neil NSAA • Gordon Grant Room	AUGUST 26 - SEPTEMBER 11
Robert Frascella NSAA • Hallway Gallery	AUGUST 26 - SEPTEMBER 11
Marion Hall Beauport Hotel	SEPTEMBER 15 - OCTOBER 14
Katie Cornog <i>BankGloucester</i>	OCTOBER 14 - DECEMBER 5
Barbara Kremer Beauport Hotel	OCTOBER 15 - NOVEMBER 15
Linda Lea Bertrand <i>BankGloucester</i>	DECEMBER 9 - JANUARY 20, 2026

DO YOU WANT TO SUPPORT US?

Our yearly programming is only possible through the generosity of our members, volunteers, visitors and donors like you. This year, OUR GOAL is to raise the money necessary to make essential upgrades to the big red building that we call home.

If you'd like to donate to NSAA,
please visit:
nsarts.org/support/donate/
or scan the QR code below.



Please visit us at
nsarts.org
throughout the
season for
updates!



Scan the QR code for
our Exhibition Policy
and Regulations.



HOURS:

Mon - Sat: 10AM - 5PM

Sun: 12PM - 4PM

Closed Mondays in May & October

Closed 4th of July



11 PIRATES LANE

GLOUCESTER, MA 01930

978.283.1857 • ARTS@NSARTS.ORG