

# Teterboro Borough Critical Facilities Bergen County, NJ



New Jersey Meadowlands Commission  
MERI

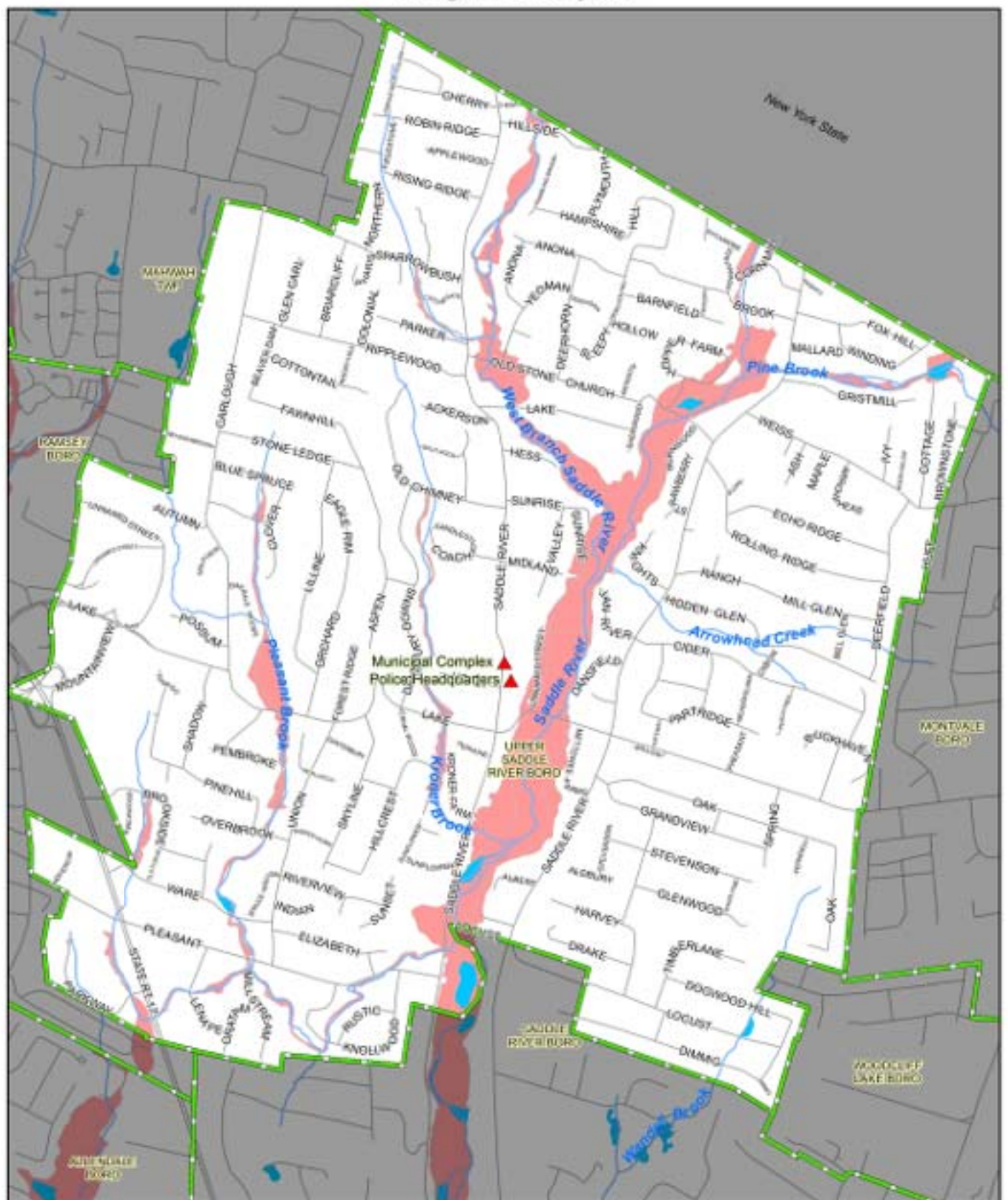


0 0.25 0.5 0.75 Miles

- |  |   |
|--|---|
|  Critical Facility  |  Roadway             |
|  Water Bodies       |  Rivers, Streams     |
|  Municipal Boundary |  100 Year Flood Zone |

This map was developed in part using NJ Dept. of Environmental Protection GIS digital data, but this secondary product has not been verified by NJDEP. For information on map content and accuracy, contact the NJMC-MERI GIS Department at [merigis@njmeadowlands.gov](mailto:merigis@njmeadowlands.gov) or 201-460-4612.

# Upper Saddle River Borough Critical Facilities Bergen County, NJ

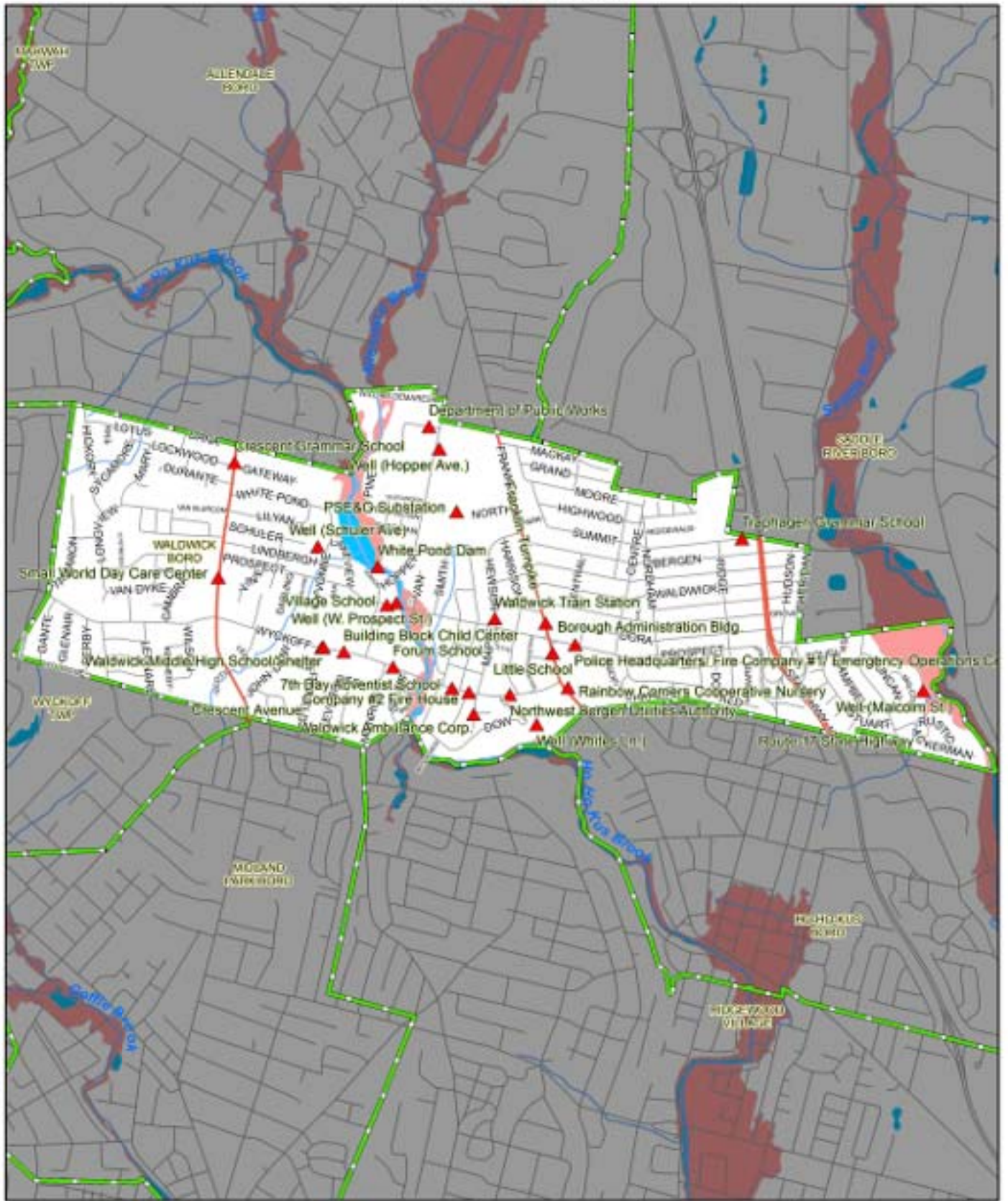


- ▲ Critical Facility
- Water Bodies
- Municipal Boundary
- Roadway
- Rivers, Streams
- 100 Year Flood Zone

This map was developed in part using NJ Dept. of Environmental Protection GIS digital data, but this secondary product has not been verified by NJDEP. For information on map content and accuracy, contact the NJMC-MERI GIS Department at [merigis@njmeadowlands.gov](mailto:merigis@njmeadowlands.gov) or 201-460-4612.



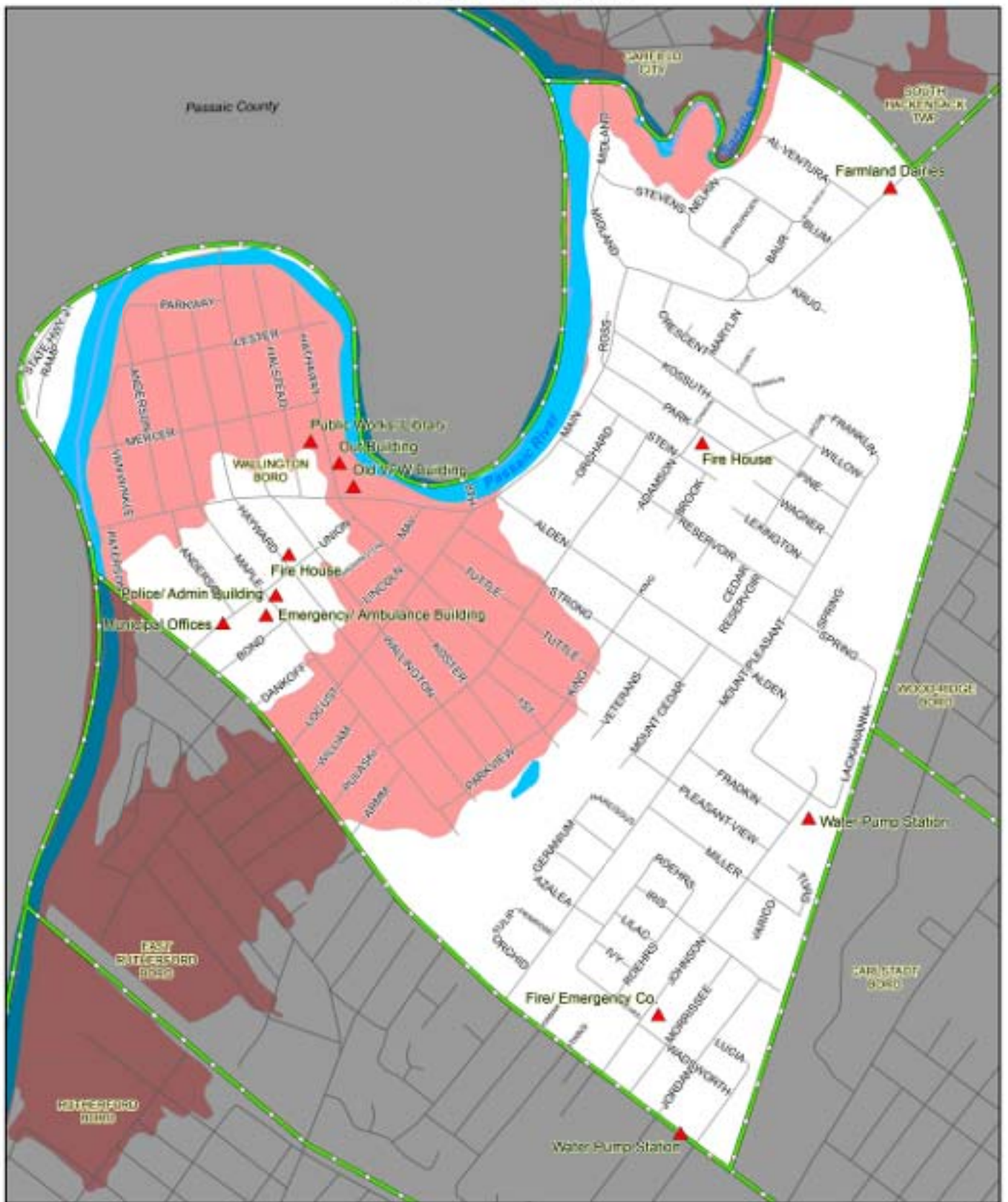
# Waldwick Borough Critical Facilities Bergen County, NJ



This map was developed in part using NJ Dept. of Environmental Protection GIS digital data, but this secondary product has not been verified by NJDEP. For information on map content and accuracy, contact the NJMC-MERI GIS Department at [merigis@njmeadowlands.gov](mailto:merigis@njmeadowlands.gov) or 201-460-4612.



# Wallington Borough Critical Facilities Bergen County, NJ



New Jersey Meadowlands Commission

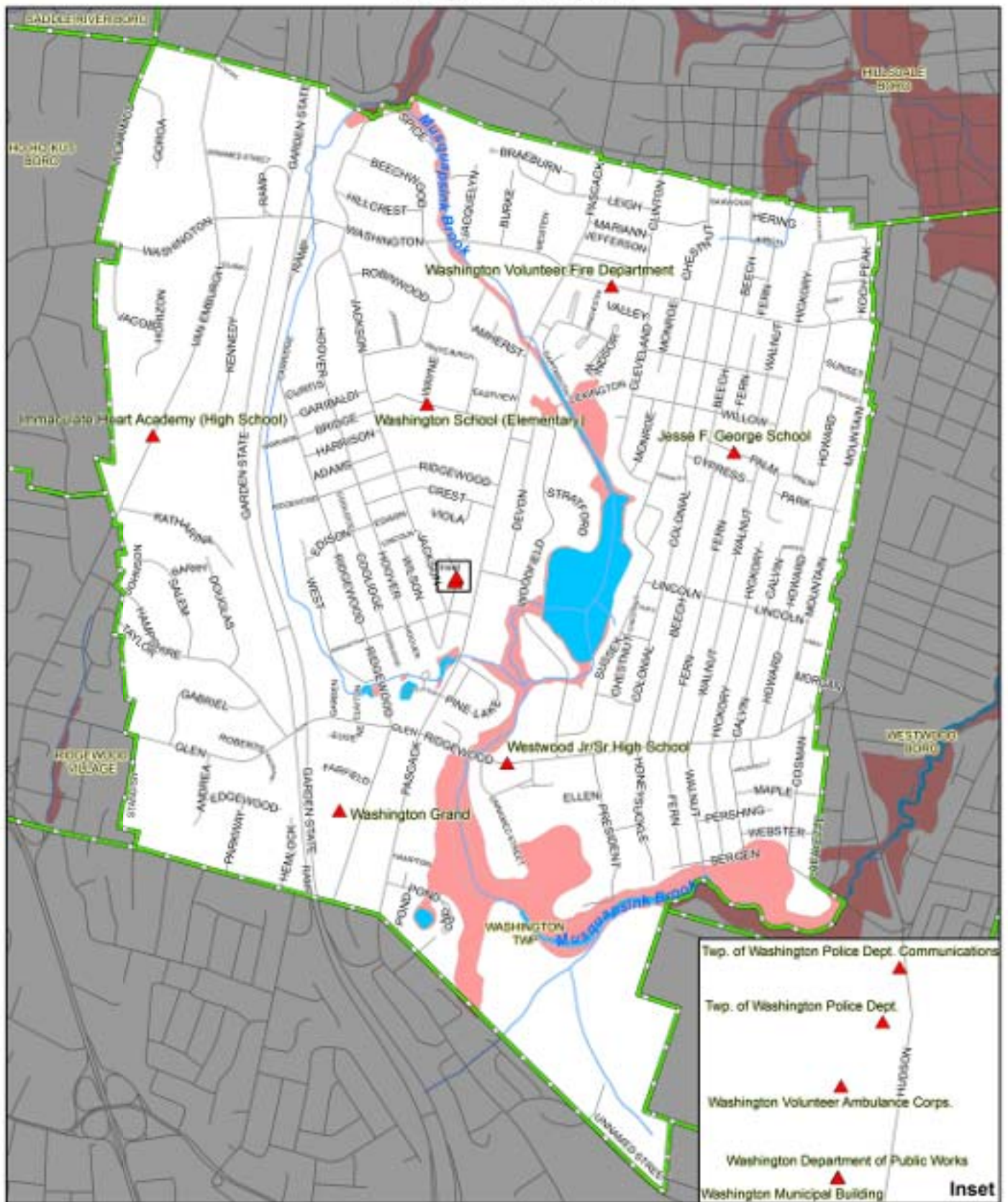


0 0.5 1 Miles

- ▲ Critical Facility
- Water Bodies
- Municipal Boundary
- Roadway
- Rivers, Streams
- 100 Year Flood Zone

This map was developed in part using NJ Dept. of Environmental Protection GIS digital data, but this secondary product has not been verified by NJDEP. For information on map content and accuracy, contact the NJMC-MERI GIS Department at [merigis@njmeadowlands.gov](mailto:merigis@njmeadowlands.gov) or 201-460-4612.

# Washington Township Critical Facilities Bergen County, NJ



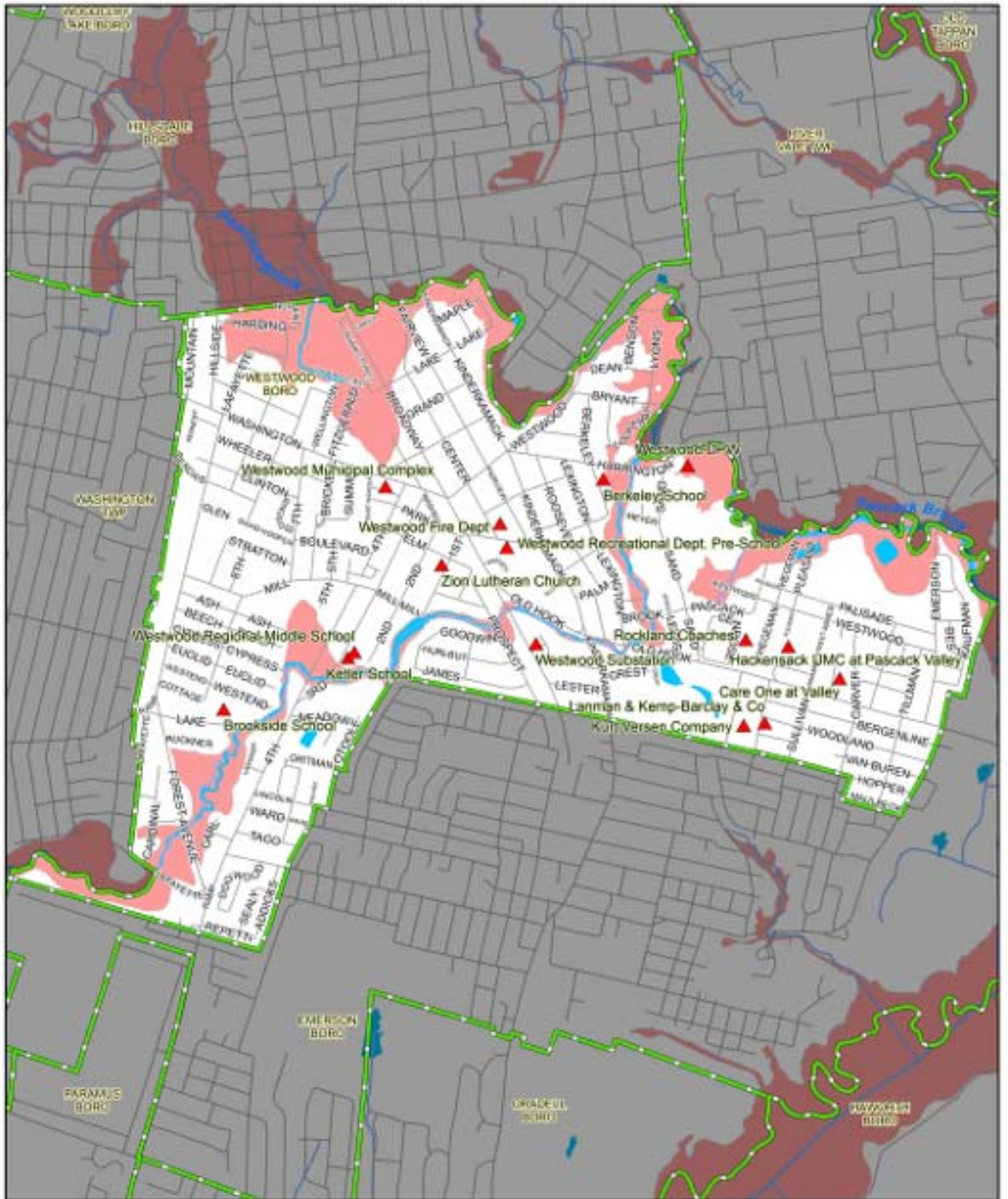
- ▲ Critical Facility
- Water Bodies
- Municipal Boundary

- Roadway
- Rivers, Streams
- 100 Year Flood Zone

This map was developed in part using NJ Dept. of Environmental Protection GIS digital data, but this secondary product has not been verified by NJDEP. For information on map content and accuracy, contact the NJMC-MERI GIS Department at [merigis@njmeadowlands.gov](mailto:merigis@njmeadowlands.gov) or 201-460-4612.



# Westwood Borough Critical Facilities Bergen County, NJ



New Jersey Meadowlands Commission

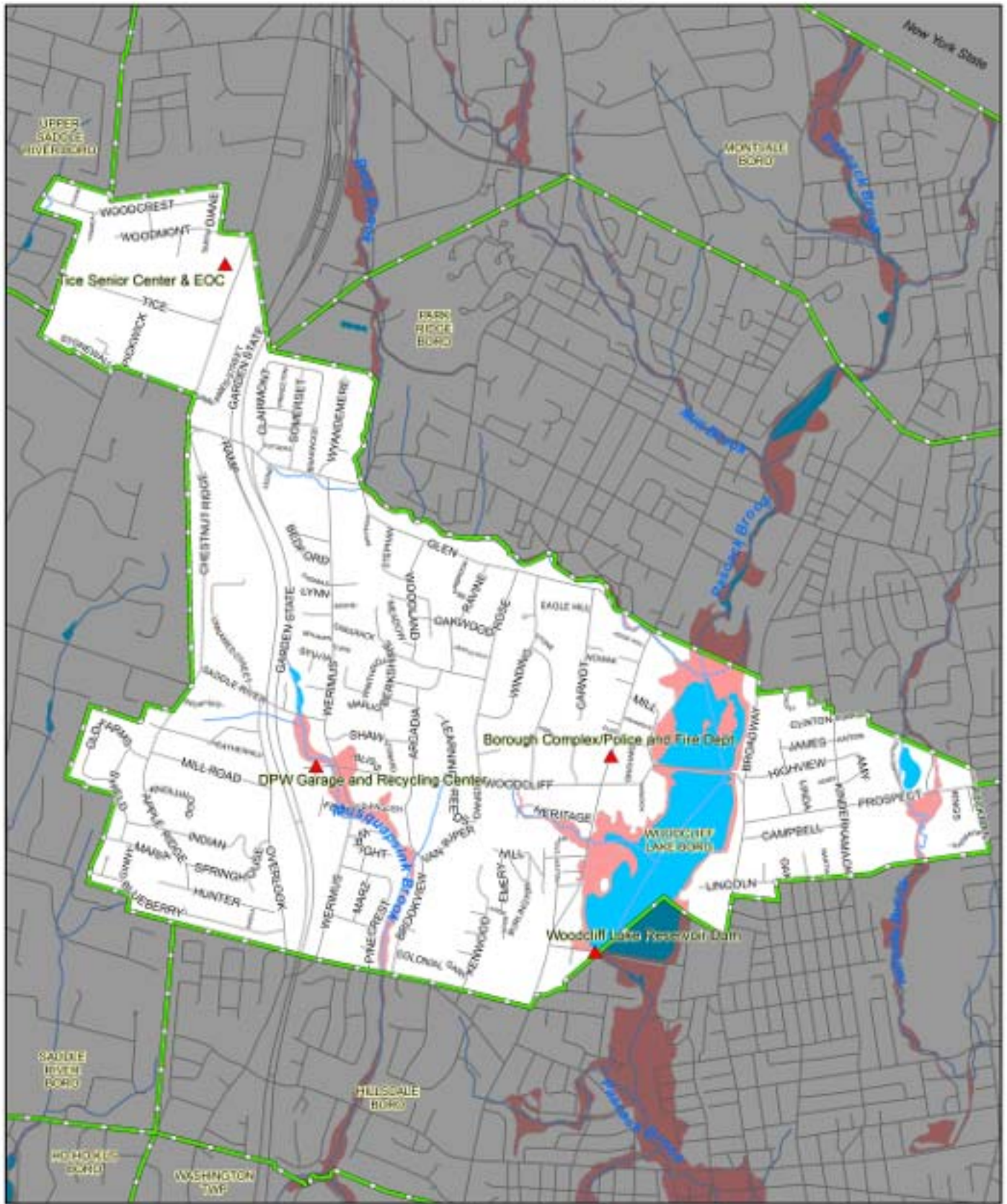


- |  |   |
|--|---|
|  Critical Facility  |  Roadway             |
|  Water Bodies       |  Rivers, Streams     |
|  Municipal Boundary |  100 Year Flood Zone |

This map was developed in part using NJ Dept. of Environmental Protection GIS digital data, but this secondary product has not been verified by NJDEP. For information on map content and accuracy, contact the NJMC-MERI GIS Department at [merigis@njmeadowlands.gov](mailto:merigis@njmeadowlands.gov) or 201-460-4612.



# Woodcliff Lake Borough Critical Facilities Bergen County, NJ



New Jersey Meadowlands Commission  
UNIVERSITY OF MICHIGAN LIBRARY

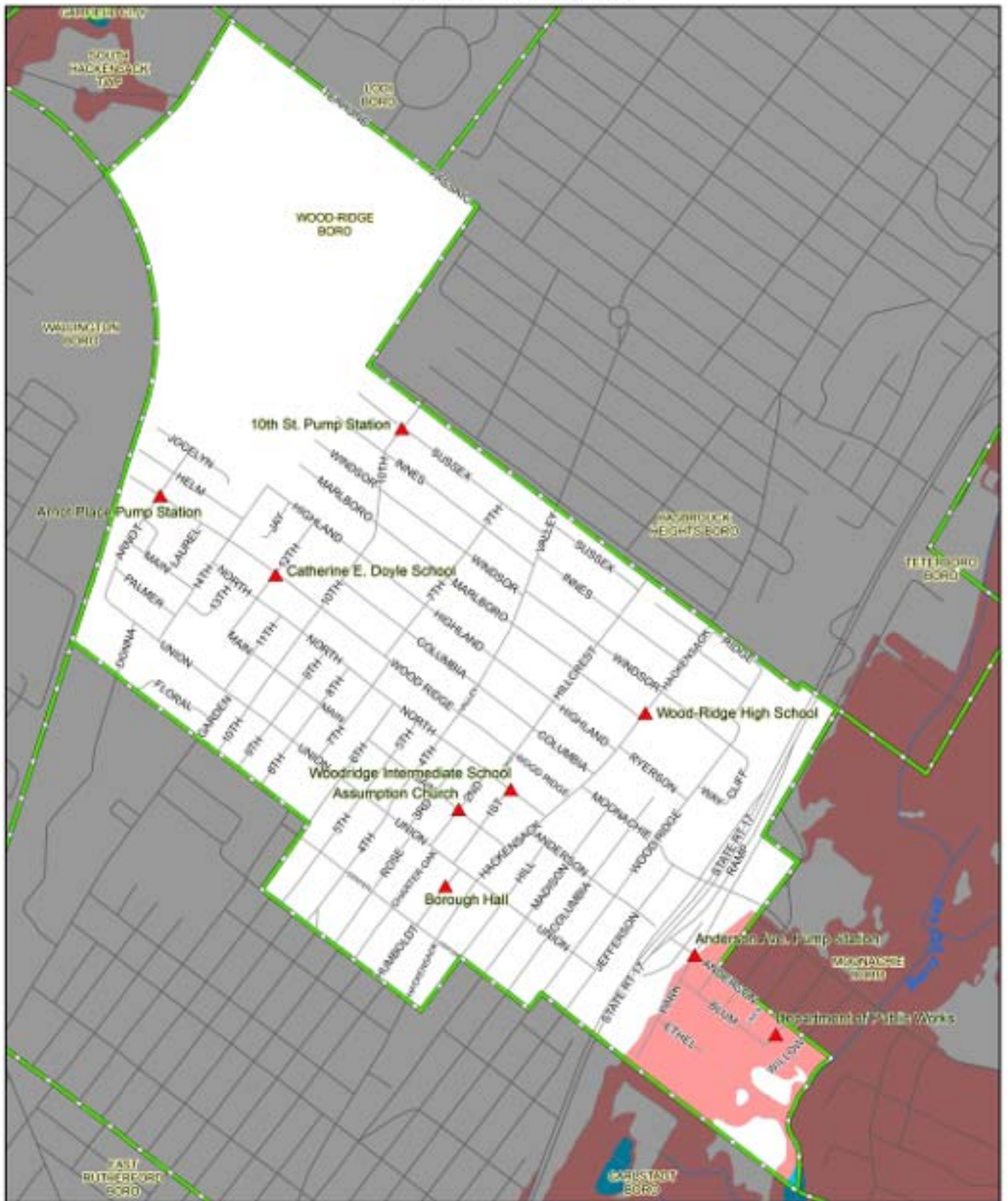


- ▲ Critical Facility
- Water Bodies
- Municipal Boundary
- Roadway
- Rivers, Streams
- 100 Year Flood Zone

This map was developed in part using NJ Dept. of Environmental Protection GIS digital data, but this secondary product has not been verified by NJDEP. For information on map content and accuracy, contact the NJMC-MERI GIS Department at [merigis@njmeadowlands.gov](mailto:merigis@njmeadowlands.gov) or 201-460-4612.



# Wood-Ridge Borough Critical Facilities Bergen County, NJ



New Jersey Meadowlands Commission  
MERI  
Environmental Resources Institute

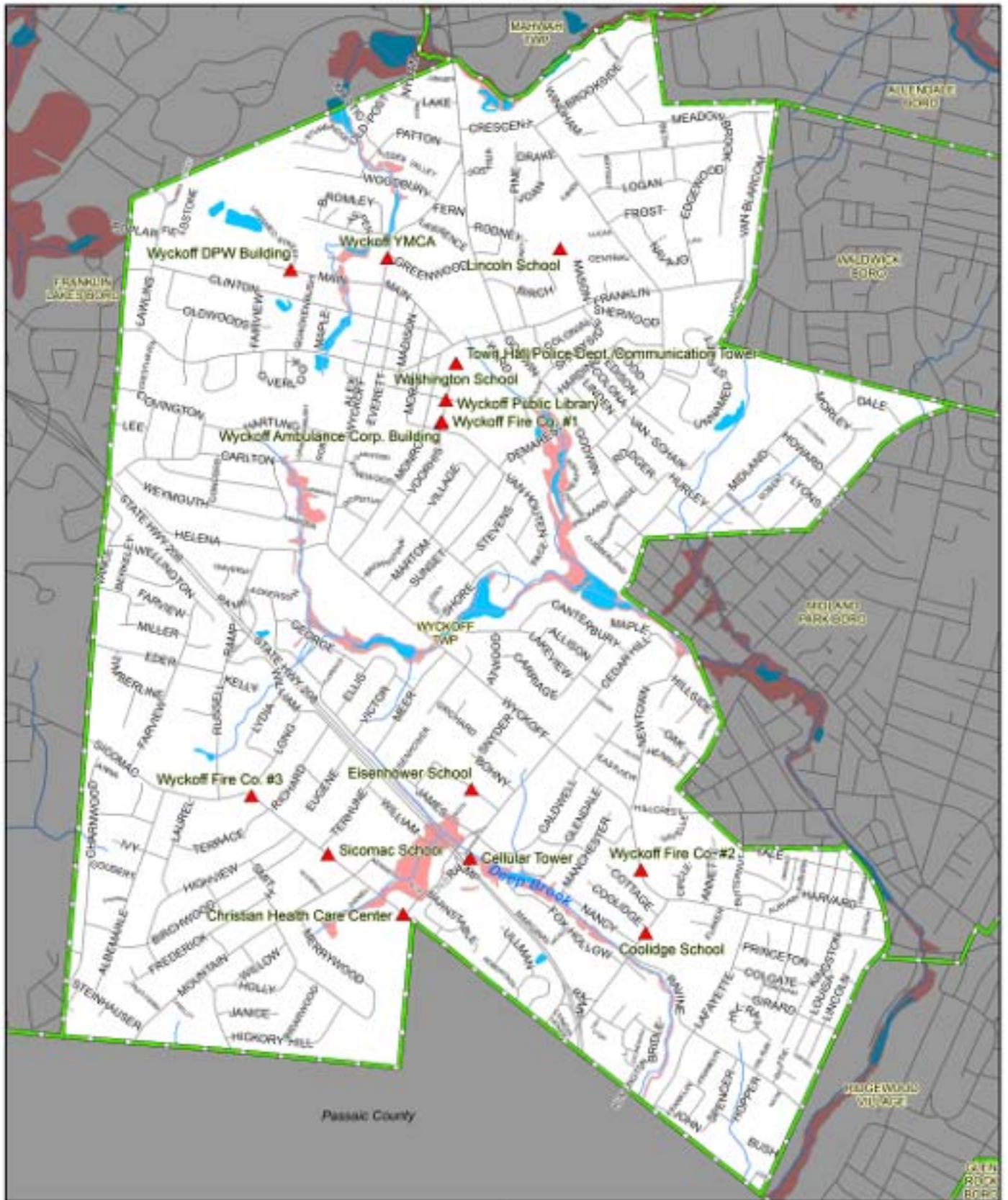


- ▲ Critical Facility
- Water Bodies
- Municipal Boundary
- Roadway
- Rivers, Streams
- 100 Year Flood Zone

This map was developed in part using NJ Dept. of Environmental Protection GIS digital data, but this secondary product has not been verified by NJDEP. For information on map content and accuracy, contact the NJMC-MERI GIS Department at [merigis@njmeadowlands.gov](mailto:merigis@njmeadowlands.gov) or 201-460-4612.



# Wyckoff Township Critical Facilities Bergen County, NJ



New Jersey Meadowlands Commission  
ENVIRONMENTAL RESTORATION DIVISION



This map was developed in part using NJ Dept. of Environmental Protection GIS digital data, but this secondary product has not been verified by NJDEP. For information on map content and accuracy, contact the NJMC-MERI GIS Department at [merigis@njmeadowlands.gov](mailto:merigis@njmeadowlands.gov) or 201-460-4612.