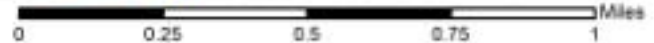
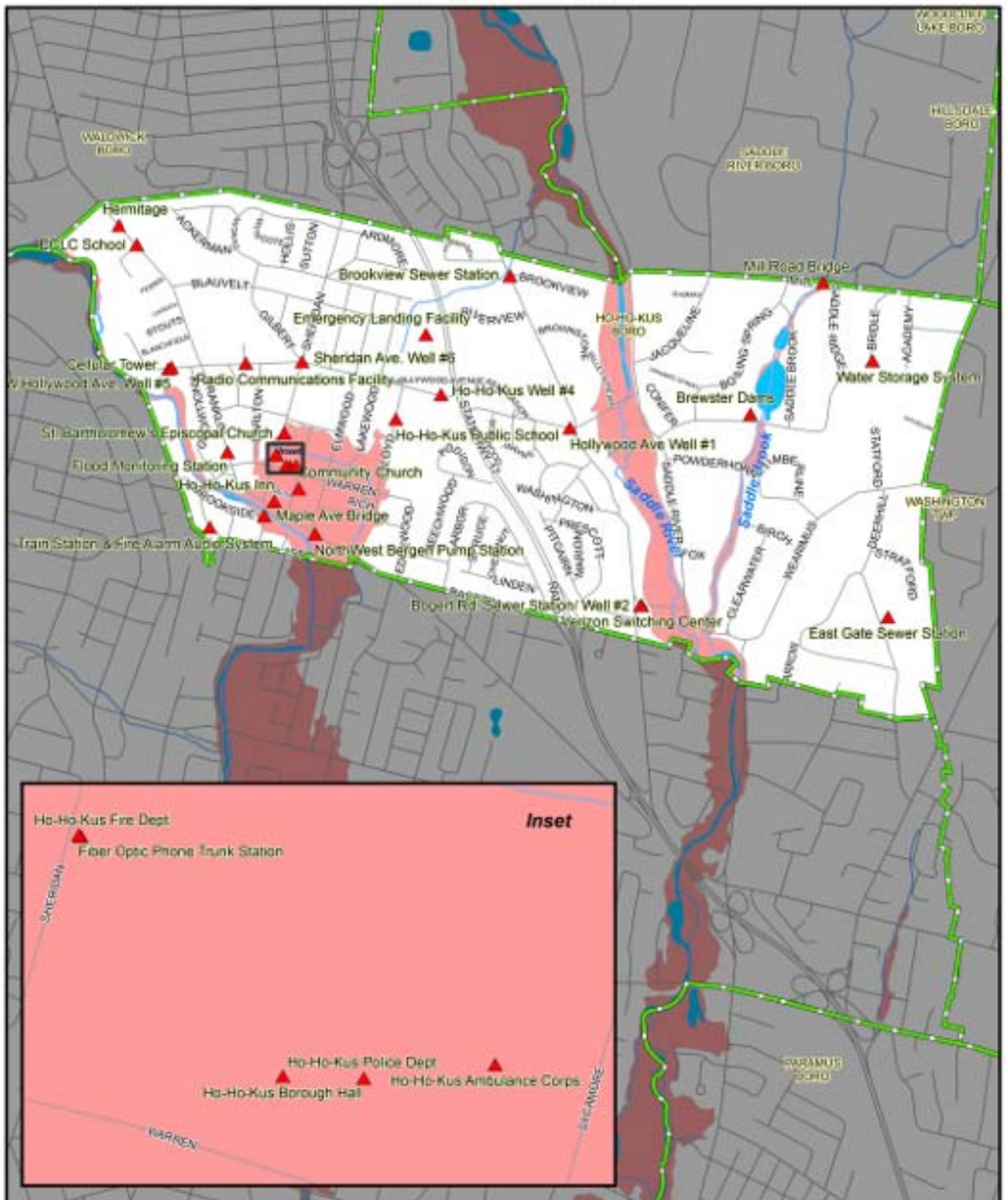


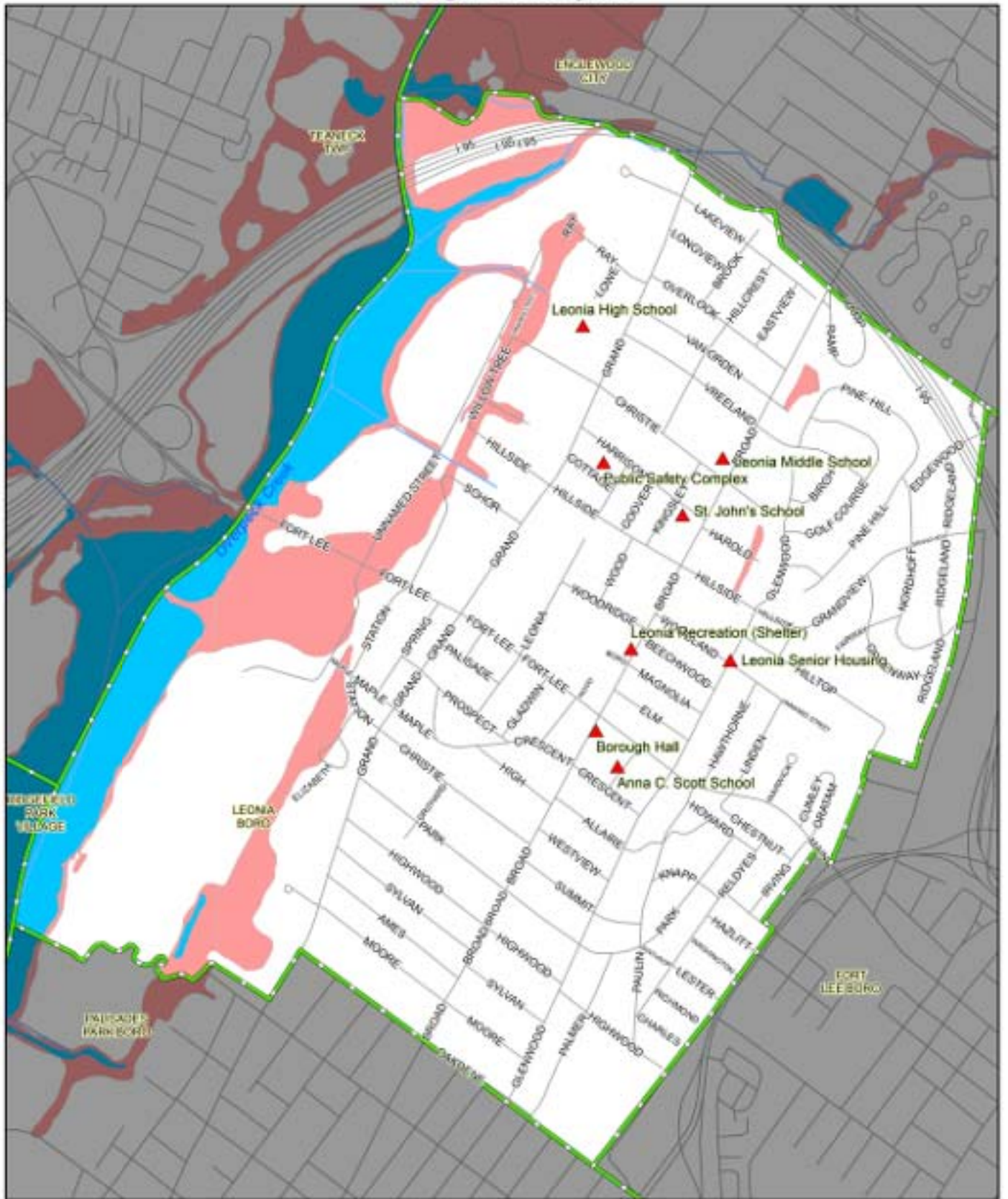
# Ho-Ho-Kus Borough Critical Facilities Bergen County, NJ



- ▲ Critical Facility
- Roadway
- Water Bodies
- Rivers, Streams
- Municipal Boundary
- 100 Year Flood Zone

This map was developed in part using NJ Dept. of Environment Protection GIS digital data, but this secondary product has not been verified by NJDEP. For information on map content and accuracy, contact the NJMC-MERI GIS Department at [mengis@njmeadowlands.gov](mailto:mengis@njmeadowlands.gov) or 201-460-4612.

# Leonia Borough Critical Facilities Bergen County, NJ



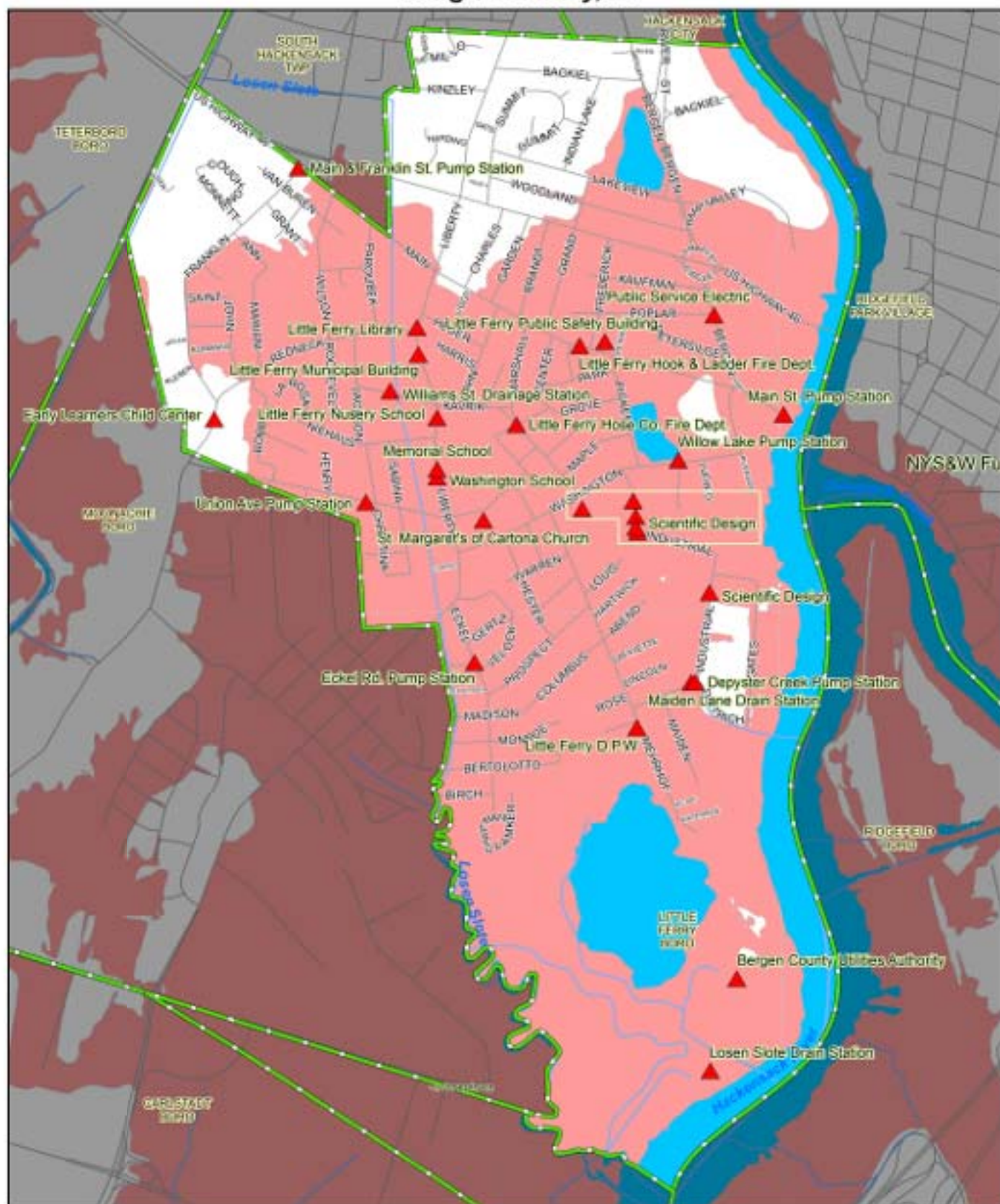
New Jersey Meadowlands Commission  
ENVIRONMENTAL RESEARCH INSTITUTE



- ▲ Critical Facility
- Water Bodies
- Municipal Boundary
- Roadway
- Rivers, Streams
- 100 Year Flood Zone

This map was developed in part using NJ Dept. of Environmental Protection GIS digital data, but this secondary product has not been verified by NJDEP. For information on map content and accuracy, contact the NJMC-MERI GIS Department at [merigis@njmeadowlands.gov](mailto:merigis@njmeadowlands.gov) or 201-460-4612.

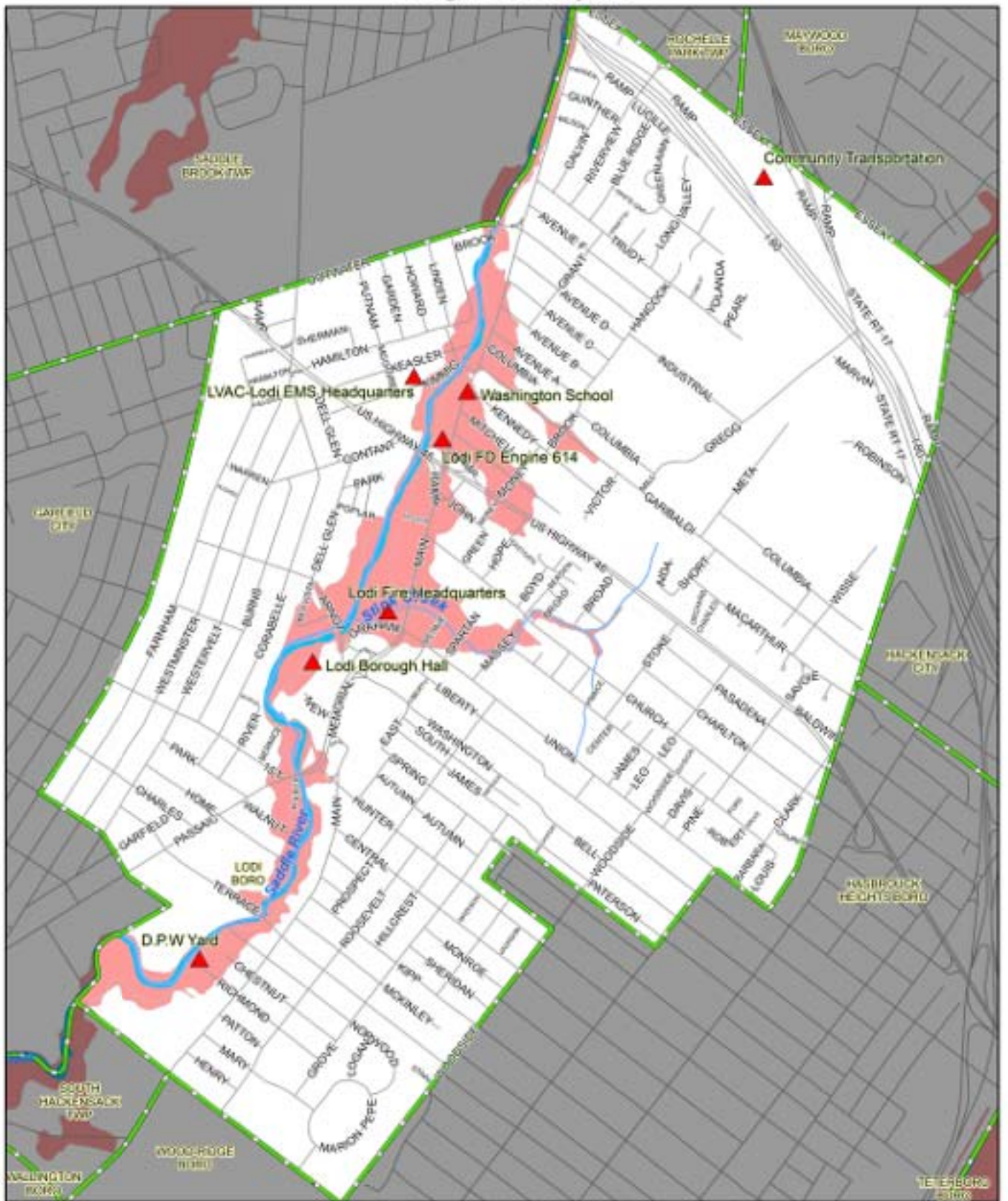
# Little Ferry Borough Critical Facilities Bergen County, NJ



- ▲ Critical Facility
- Water Bodies
- Municipal Boundary
- Roadway
- Rivers, Streams
- 100 Year Flood Zone

This map was developed in part using NJ Dept. of Environmental Protection GIS digital data, but this secondary product has not been verified by NJDEP. For information on map content and accuracy, contact the NJMC-MERI GIS Department at [merigis@njmeadowlands.gov](mailto:merigis@njmeadowlands.gov) or 201-460-4612.

# Lodi Borough Critical Facilities Bergen County, NJ



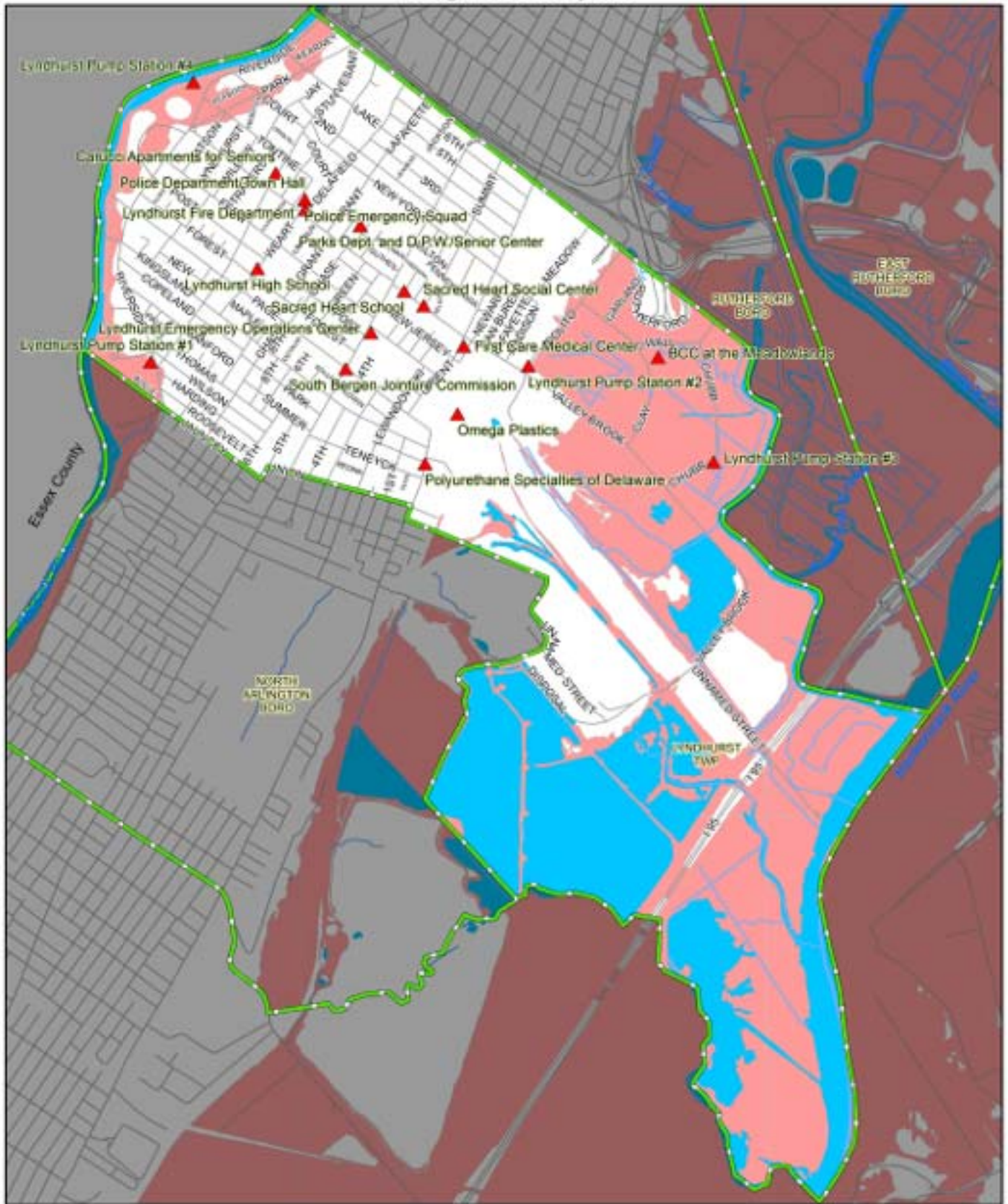
New Jersey Meadowlands Commission  
Meadowlands Environmental Research Institute



- ▲ Critical Facility
- Water Bodies
- Municipal Boundary
- Roadway
- Rivers, Streams
- 100 Year Flood Zone

This map was developed in part using NJ Dept. of Environmental Protection GIS digital data, but this secondary product has not been verified by NJDEP. For information on map content and accuracy, contact the NJMC-MERI GIS Department at [merigis@njmeadowlands.gov](mailto:merigis@njmeadowlands.gov) or 201-460-4612.

# Lyndhurst Township Critical Facilities Bergen County, NJ





**MERI**  
New Jersey Meadowlands Commission



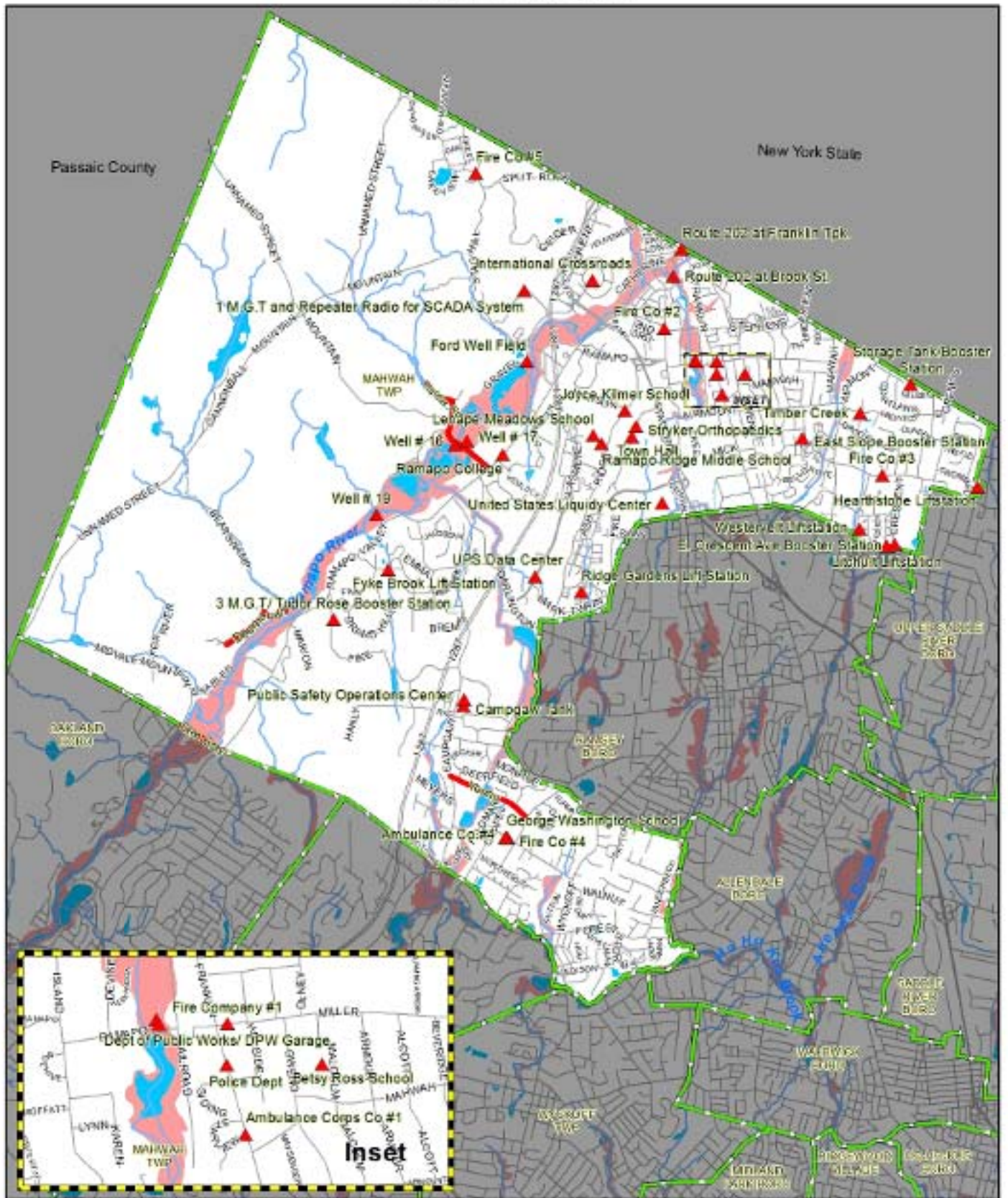


0 0.25 0.5 1 1.5 Miles

 Critical Facility	 Roadway
 Water Bodies	 Rivers, Streams
 Municipal Boundary	 100 Year Flood Zone

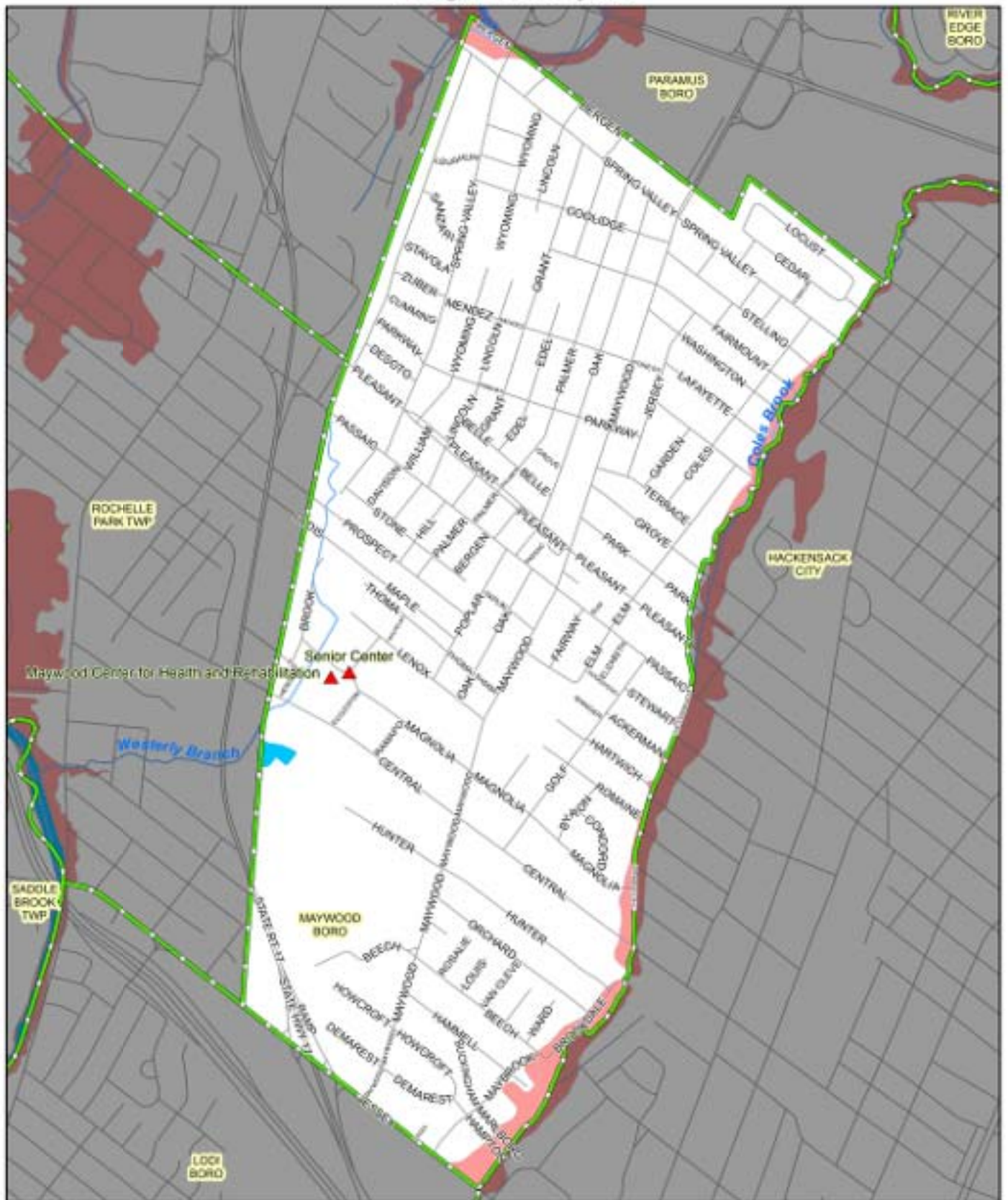
This map was developed in part using NJ Dept. of Environmental Protection GIS digital data, but this secondary product has not been verified by NJDEP. For information on map content and accuracy, contact the NJMC-MERI GIS Department at [merigis@njmeadowlands.gov](mailto:merigis@njmeadowlands.gov) or 201-460-4612.

# Mahwah Township Critical Facilities Bergen County, NJ



This map was developed in part using NJ Dept. of Environmental Protection GIS digital data, but this secondary product has not been verified by NJDEP. For information on map content and accuracy, contact the NJMC-MERI GIS Department at [merigis@njmeadowlands.gov](mailto:merigis@njmeadowlands.gov) or 201-460-4612.

# Maywood Borough Critical Facilities Bergen County, NJ





**MERI**  
New Jersey Meadowlands Commission

N





0 0.25 0.5 1 Miles

▲ Critical Facility

  Water Bodies

  Municipal Boundary

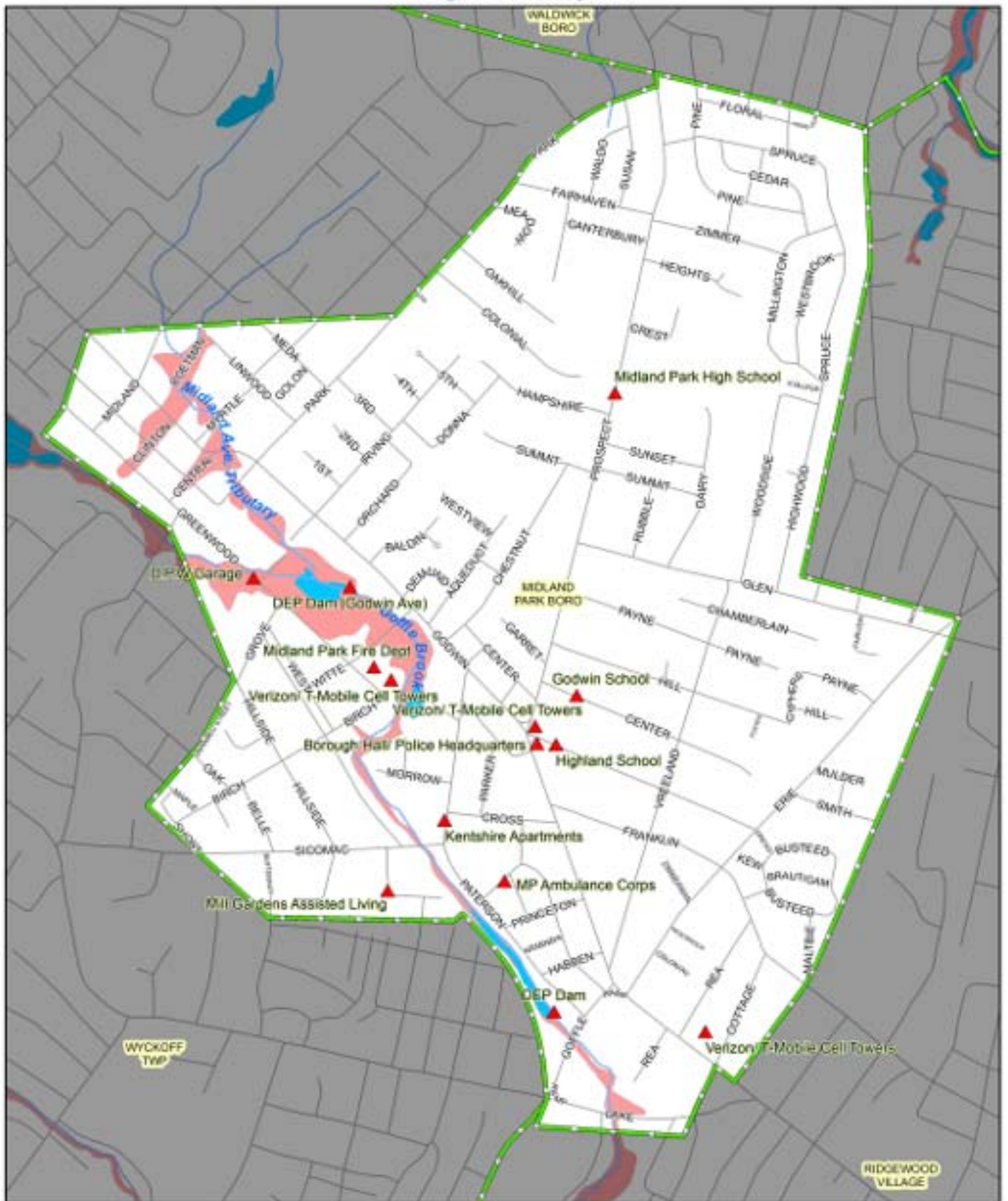
 Roadway

 Rivers, Streams

  100 Year Flood Zone

This map was developed in part using NJ Dept. of Environmental Protection GIS digital data, but this secondary product has not been verified by NJDEP. For information on map content and accuracy, contact the NJMC-MERI GIS Department at [merigis@njmeadowlands.gov](mailto:merigis@njmeadowlands.gov) or 201-460-4612.

# Midland Park Borough Critical Facilities Bergen County, NJ



New Jersey Meadowlands Commission

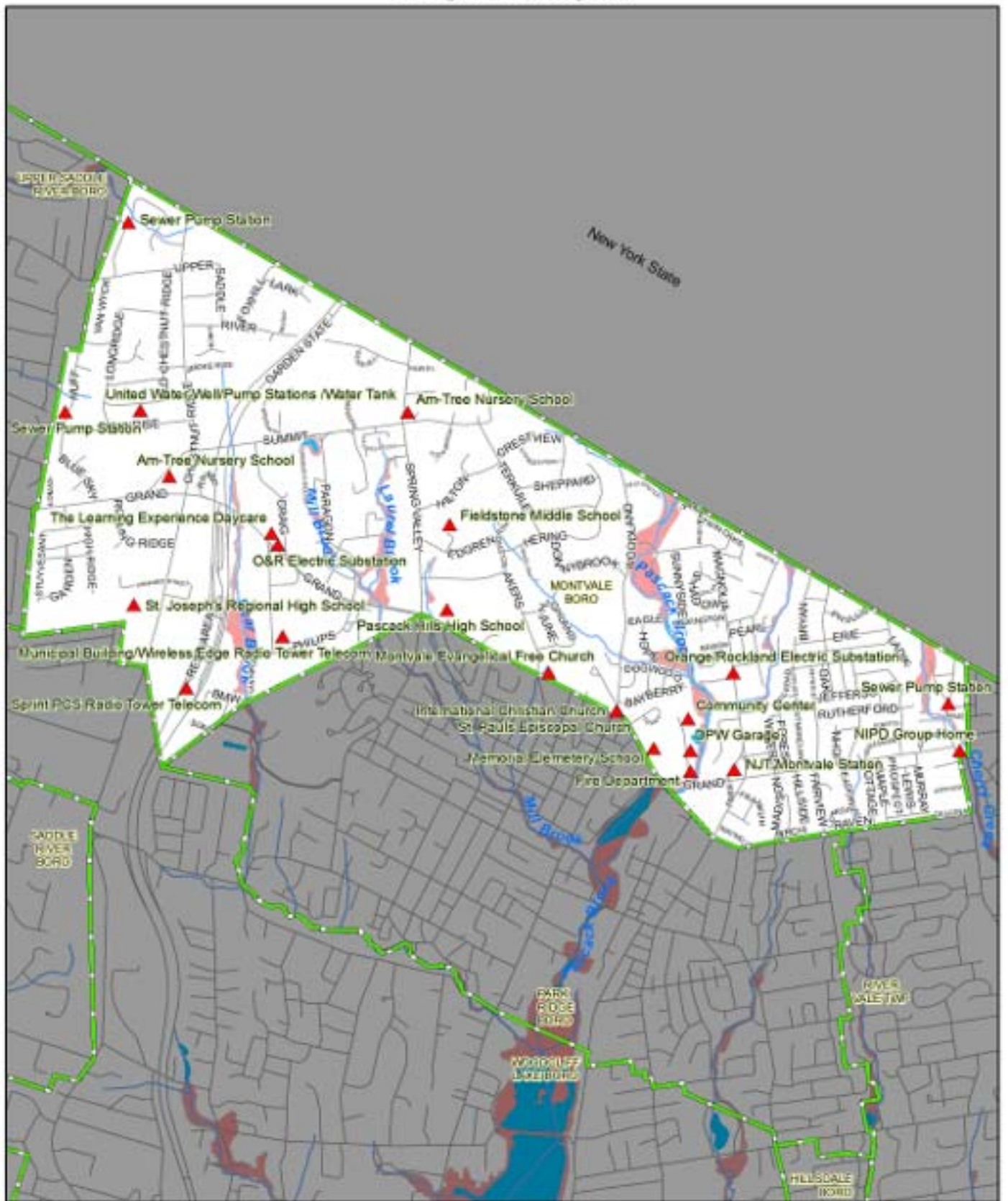


- ▲ Critical Facility
- Water Bodies
- Municipal Boundary
- Roadway
- Rivers, Streams
- 100 Year Flood Zone

This map was developed in part using NJ Dept. of Environmental Protection GIS digital data, but this secondary product has not been verified by NJDEP. For information on map content and accuracy, contact the NJMC-MERI GIS Department at [merigis@njmeadowlands.gov](mailto:merigis@njmeadowlands.gov) or 201-460-4612.



# Montvale Borough Critical Facilities Bergen County, NJ



New Jersey Meadowlands Commission  
ENVIRONMENTAL RESEARCH INSTITUTE



- ▲ Critical Facility
- Water Bodies
- Municipal Boundary
- Roadway
- Rivers, Streams
- 100 Year Flood Zone

This map was developed in part using NJ Dept. of Environmental Protection GIS digital data, but this secondary product has not been verified by NJDEP. For information on map content and accuracy, contact the NJMC-MERI GIS Department at [merigis@njmeadowlands.gov](mailto:merigis@njmeadowlands.gov) or 201-460-4612.