



2021 ANNUAL REPORT

OVERVIEW



Aerial View of Richard W. DeKorte Park, including the New Jersey Sports and Exhibition Authority's Administrative Offices, Center for Environmental and Scientific Education, the William D. McDowell Observatory and the Meadowlands Environment Center

COVER PHOTOS (Top to bottom): MRRI Prepares to Launch Drone to Obtain Footage of Meadowlands Terrain and Marshes. Meadowlands Fire Department responds to the scene of an incident. The 122nd prestigious Army-Navy college football rivalry game was played on December 11 at MetLife Stadium. MRRI staff engages college students on a visit to DeKorte Park.

The New Jersey Sports and Exposition Authority (NJSEA) operates from DeKorte Park in Lyndhurst and the Meadowlands Sports Complex in East Rutherford. The agency holds the land lease for and provides for the ongoing operation of the internationally renowned MetLife Sports Complex.

The NJSEA is also the regional planning and zoning authority for the Meadowlands District, which consists of parts of 14 towns in Bergen and Hudson counties.

In addition, the Authority's DeKorte Park location in Lyndhurst includes the Meadowlands Research and Restoration Institute (MRRI), which works to preserve, conserve and improve the environment.

The NJSEA's educational component, the Meadowlands Environment Center, introduces children in Grades K-12 and families to the Meadowlands natural resources and their critical importance.

Over the past five decades, hundreds of millions of people from around the world have experienced world-class sporting matches, concerts and other events at the Sports Complex, which includes MetLife Stadium, the Meadowlands Racetrack, the Meadowlands Arena, and the

American Dream entertainment and retail complex. In 2021, the Arena was the filming site of the NBC Universal television show, "The Equalizer."

The Authority also owns the Wildwood Convention Center and holds the land lease for the Monmouth Park Racetrack in

Today the Meadowlands is a hub for warehouse and distribution centers, data centers, and office space due to its proximity to New York City, mass transit, and major roadways, air and seaports.

Simultaneously, the agency has cleaned up and closed more than 50 orphaned landfills since its founding

“The Meadowlands District municipalities in Bergen County are Carlstadt, East Rutherford, Little Ferry, Lyndhurst, Moonachie, North Arlington, Ridgefield, Rutherford, South Hackensack and Teterboro. Hudson County municipalities in the District are Jersey City, Kearny, North Bergen and Secaucus.”

Oceanport, home of the Haskell Invitational; the Favorites off-track wagering facility in Woodbridge; and the Atlantic Health Jets Training Center in Florham Park.

As a regional planning and zoning agency, the NJSEA promotes economic growth in the Meadowlands District. Through appropriate, smart planning, the agency over the past five decades has attracted billions of dollars in economic development to the District, establishing the area as a foremost regional economic driver.

in 1969, protected more than 3,500 acres of environmentally sensitive wetlands, and contributed to the key improvement of the Hackensack River and the Meadowlands District's overall remarkable environmental renaissance. The Meadowlands, once defined by blight and pollution, today is teeming with wildlife and natural beauty, and is a nationally recognized birding hotspot. ■

MESSAGE FROM THE CHAIRMAN



JOHN BALLANTYNE
Chairman

“The NJSEA embraced change and improved the agency’s efficiency by merging two of its divisions that work to improve, enhance and protect the District’s critical urban eco-system and surrounding environment.”

We are pleased to report that the year 2021 was an exciting and thriving time at the New Jersey Sports and Exposition Authority (NJSEA). The agency further solidified its dedication to the residents of the Meadowlands District through forward-thinking initiatives including a key consolidation, the reception of several Federal grants to support environmental research and the use of it facilities to greatly assist the public in combating COVID-19.

The NJSEA improved the agency’s efficiency by merging two of its departments that work to improve, enhance and protect the District’s critical urban eco-system, and surrounding environment. The former Meadowlands Environment Research Institute (MERI) and the Natural Resources Department merged to become the Meadowlands Research and Restoration Institute (MRRI). The two groups often worked together on research projects. By bringing them together as MRRI, the NJSEA maximized the resources of its excellent team of scientists, researchers and field technicians.

MRRI got off to a momentous start. The Institute received three U.S. Environmental Protection Agency grants that support research to determine the resiliency of and best prepare the

District’s environmentally-sensitive wetlands to combat sea level rise and climate chance, an especially crucial study given the District’s low-lying areas. The agency played a crucial role in helping residents fight COVID-19 by serving as one of the State’s Vaccine Megasites. Some 250,000 people received COVID-19 vaccines at the Meadowlands Sports Complex. The Authority was happy to lend its resources to assist in the vaccination process.

In addition, MetLife Stadium hosted the annual Army-Navy college football game. The NJSEA played a critical role in attracting the teams to continue their great rivalry in the Meadowlands. The Meadowlands Arena served as a filming location for the popular television show, “The Equalizer,” while the brave Meadowlands Fire and EMS Departments served the community by responding to 250 calls requiring their services.

The agency invites the public to learn more about its operations and activities by visiting its website, www.njsea.com, and emailing info@njsea.com.

The NJSEA’s numerous achievements in 2021 are a result of the hard work of its committed and dynamic professional staff. Through their efforts, we look forward to a successful next 12 months. ■

BOARD OF COMMISSIONERS



VINCENT PRIETO
President and CEO



JOHN BALLANTYNE
Chairman



JOSEPH BUCKELEW
Vice Chairman



ROBERT J. DOWD



ARMANDO B. FONTOURA



MICHAEL H. GLUCK



WOODY KNOPF



STATE TREASURER
ELIZABETH MAHER
MUOIO



STEVEN PLOFKER, ESQ.



ANDREW SCALA



ANTHONY SCARDINO



LOUIS J. STELLATO



ROBERT B. YUDIN



VINCENT PRIETO
President & CEO

MESSAGE FROM THE PRESIDENT AND CEO

The New Jersey Sports and Exposition Authority's achievements over the past year throughout its departments are a testimony to its dedication to serving the agency's constituents. The NJSEA's scientific environmental research has continued to help prepare the region to understand and address the effects of climate change. The NJSEA has also promoted economic development in the Meadowlands District. Projects approved by the NJSEA that are now under construction include several large warehouses and e-commerce distribution/ fulfillment centers. In addition, work commenced on the first stages of a four-warehouse project located on the site of the former PSE&G Hudson Generating Station in Jersey City.

The NJSEA also includes the Meadowlands Environment Center (MEC), the educational component of the agency. The MEC in 2021 provided innovative enrichment programs to students from Grades K-12 and families throughout the year and welcomed back students in person at the start of the 2020-2021 school year. MEC educators' hard work and forward-thinking teaching methods are helping to inspire and foster an awareness of the importance of environmental protection among their students. Environmental education lessons are based in Science,

Technology, Reading, Engineering, Art and Math (STREAM), subjects that are core to students' academic success and preparation for any number of careers in the environmental field.

The NJSEA's DeKorte Park in Lyndhurst, River Barge Park in Carlstadt and Mill Creek Marsh in Secaucus saw an influx of visitors over the past 12 months, further cementing its park system as a treasure for all ages.

In addition, the NJSEA, working with the Bergen County Audubon Society, hosted several public programs at DeKorte Park. The programs drew more than 1,000 people combined to a Native Plant Day, Butterfly Day and Meadowlands Birding Festival. The events featured nature walks and talks, and a live raptor show, a favorite among the kids, all making for fun and educational events.

The NJSEA is proud of its accomplishments in 2021 and looks forward to more initiatives over the next year. Under the vision, guidance and leadership of the Authority's Board of Commissioners and the enthusiastic work of staff professionals, the NJSEA is poised to make a positive impact on the Meadowlands District in the years and decades to come. ■

TABLE OF CONTENTS



Black Skimmer, Photo courtesy of M.E. Raine

Overview	2
Message from the Chairman	4
Board of Commissioners	5
Message from the President and CEO	6
About the NJSEA	8
2021 Highlights	12
Transportation	14
What's New ... Meadowlands Research and Restoration Institute (MRRI)	15
Parks and Natural Areas	24
Public Programs	29
Education	28
Financial Report	32

ABOUT THE NJSEA

The NJSEA is a multi-faceted agency, with departments focused on different issues such as land use planning, transportation and solid waste operations. To meet its mandate of protecting the delicate balance of nature, the Meadowlands Research and Restoration Institute (MMRI), the scientific arm of the NJSEA, performs studies of the Meadowlands District’s vital natural resources and wildlife habitats with a special interest in preparing the District for the effects of climate change and sea level rise.



New Jersey Sports and Exposition Authority Administration Offices. Richard DeKorte Park, Lyndhurst



MMRI Drone Program



Meadowlands Arena

The Institute also includes the NJSEA’s drone and Geographic Information Systems (GIS) digital mapping operations. Drone and mapping technology are essential to studying and improving wildlife habitats and flood protection techniques.

At the Sports Complex in East Rutherford, the Meadowlands Arena is the sight of television productions, most recently NBC Universal’s “The Equalizer.” The Authority’s Fire Department and Emergency Medical Services Department are also housed at the Sports Complex. The



MetLife Stadium

ABOUT THE NJSEA



Meadowlands Racetrack

site also includes MetLife Stadium, the Meadowlands Racetrack and the NJSEA's Internet Technology, Engineering and Site Operations Departments.

The Authority's Land Use Management Department (LUM) processes and reviews building applications for development for

conformance with District zoning regulations and the NJ Uniform Construction Code, performs site inspections, and oversees transportation planning.

The Solid Waste Department oversees the maintenance of the District's closed landfills.

The NJSEA co-hosts several public events each year with the Bergen County Audubon Society that bring more than 1,000 people to DeKorte Park to learn about and enjoy birds, butterflies, and native plants. DeKorte Park is the jewel of the Meadowlands Parks system.

The Meadowlands Environment Center (MEC) provides environmental education programs to thousands of students in Grades K-12 that in fall 2021 began to again visit DeKorte Park. MEC classes cover a wide array of scientific disciplines including ecology, chemistry, biology, physics, natural history, astronomy, and healthy eating and nutrition. Classes are taught by Ramapo College educators through a partnership with the NJSEA. ■



Birders scan the sky at a monthly BCAS nature walk



NJSEA Landuse Management staff reviews development plan



Students learn to prepare healthy meals on the Meadowland Environment Center Mobile Food Lab

2021 HIGHLIGHTS...

At the Meadowlands Sports Complex in East Rutherford, the NJSEA housed one of the State’s COVID-19 Vaccine Mega Sites, with 250,000 people receiving doses. The Meadowlands Arena was a prime spot for television production. NBC Universal filmed the television show, “The Equalizer,” at the facility. In addition, the NJSEA played a key role in preparing the Sports Complex to resume operations, including live racing and simulcasting at the Meadowlands Racetrack, and the reopening of MetLife Stadium. Meanwhile, the NJSEA Medical Services and Fire Departments responded to 250 emergency calls. The Departments responds to emergency calls for incidents at the Sports Complex as well as parts of the New Jersey Turnpike, Route 3 Service Road and any roadway that impacts the Complex.

“An NJSEA facility housed one of the State’s COVID-19 Vaccine Mega Sites, with 250,000 people receiving doses ... NBC Universal filmed the television show, “The Equalizer,” at the Meadowlands Arena.”



Meadowlands Arena



View of the NYC skyline from a room at the Marriot Springhill Suites in Carlstadt.

In December, the prestigious Army-Navy football game took place at MetLife Stadium. The annual contest dates to 1890 and the NJSEA played a pivotal role in bringing the rivalry to the Meadowlands.

Highlights of the Land Use Management Department include numerous Meadowlands District development approvals taking shape, with many underscoring the growth of Amazon sites within the District and the conversion of existing office space into warehouses.

- Amazon continued work on retrofitting two Carlstadt warehouse/distribution sites into a fulfillment center and an e-commerce delivery parking site. Amazon also commenced construction of an e-commerce delivery station within a Rutherford redevelopment area.
- In Carlstadt, construction was completed on a 149-room Marriott Springhill Suites hotel.
- In Lyndhurst, an 118,000 square-foot self-storage facility was built on the site of a former warehouse.
- A fill/stockpile operation began for a four-warehouse redevelopment project, totaling 850,000 square feet, located on the site of the former PSE&G Hudson Generating Station in Jersey City. ■



NJSEA EMS



Meadowlands Fire Truck



Army-Navy Football game at MetLife Stadium

TRANSPORTATION



The NJSEA Transportation Group and the Meadowlands Transportation Planning Board (MTPB) are undertaking the development of an updated District-wide transportation plan that relies upon the participation of public and private sector stakeholders. The updated Meadowlands District Transportation Plan (MDTP) will reflect recent growth in the District and renew the transportation planning horizon to the year 2045 (MDTP 2045). In 2021, the Transportation group held two rounds of virtual governmental and technical stakeholders meetings, and two additional meetings to provide updates on the process and receive feedback and input from various stakeholders and the board. ■

WHAT'S NEW...



“... The most significant organizational development within the NJSEA in 2021 was the merger of the former Meadowlands Environmental Research Institute (MERI) and the Natural Resources Department into the new Meadowlands Research and Restoration Institute (MRRI) ... ”

MRRI - MEADOWLANDS RESEARCH AND RESTORATION INSTITUTE

The most significant organizational development within the NJSEA in 2021 was the merger of the former Meadowlands Environmental Research Institute (MERI) and the Natural Resources Department into the new Meadowlands Research and

Restoration Institute (MRRI). The move seamlessly brought together two departments that perform research on the Hackensack River, Meadowlands wetlands and wildlife, and the surrounding environment. One of MRRI's main objectives

is assisting in the recovery of the region's sensitive environment and preparing for future challenges such as sea level rise. Their work in improving water quality in the Hackensack River



Drone image of Richard P. Kane Tract, Carlstadt

has contributed to the return of a great number of wildlife to the Meadowlands District. More than 285 species of birds alone, including many on the State threatened and endangered lists, have been identified in the Meadowlands District over the past few decades.

The Institute constantly monitors water and sediment quality and elevation in the Hackensack River.

The information gathered helps researchers to understand the conditions of the system and develop policies and programs that improve the River's health. MRRI collects water samples at 14 sites on the lower Hackensack River and its tributaries every quarter. This assessment provides a general outlook of overall water quality in the Meadowlands estuary.

GRANTS AND STUDIES

In September, the U.S. Environmental Protection Agency recognized MRRI's work in protecting and enhancing the Meadowlands natural resources by awarding the NJSEA three grants totaling \$547,000 to cover three projects.

The research includes studying Meadowlands marshes that have the



MRRI staff prepares to monitor Meadowlands marshes on a pontoon boat

greatest chance of resiliency under future sea level rise, examining the Sawmill Creek Wildlife Management Area's potential to provide improved habitat and sequester carbon under changing climate conditions, and management and publication of drone imagery for long-term monitoring of the Meadowlands District, which includes acquiring important data on terrain elevation and land cover.

Through a partnership with the New Jersey Institute of Technology, MRRI received a \$150,000 grant from the State Department of Environmental Protection to help mitigate hazardous algae blooms in New Jersey's fresh waters. MRRI will be operating a

specialty designed, 22-foot boat and equipment to mechanically remove algae starting in the spring of 2022. A study completed in 2021 involved exploring the relationship between water table levels and weather events with contaminated trace metal movement and redistribution. By sampling five wells in a marsh, researchers looked to better understand the relationship



MRRI staff taking GPS coordinates at Secaucus High School Creek

between climate change and sea level rise, and the redistribution of legacy trace metals buried and immobilized in sediments

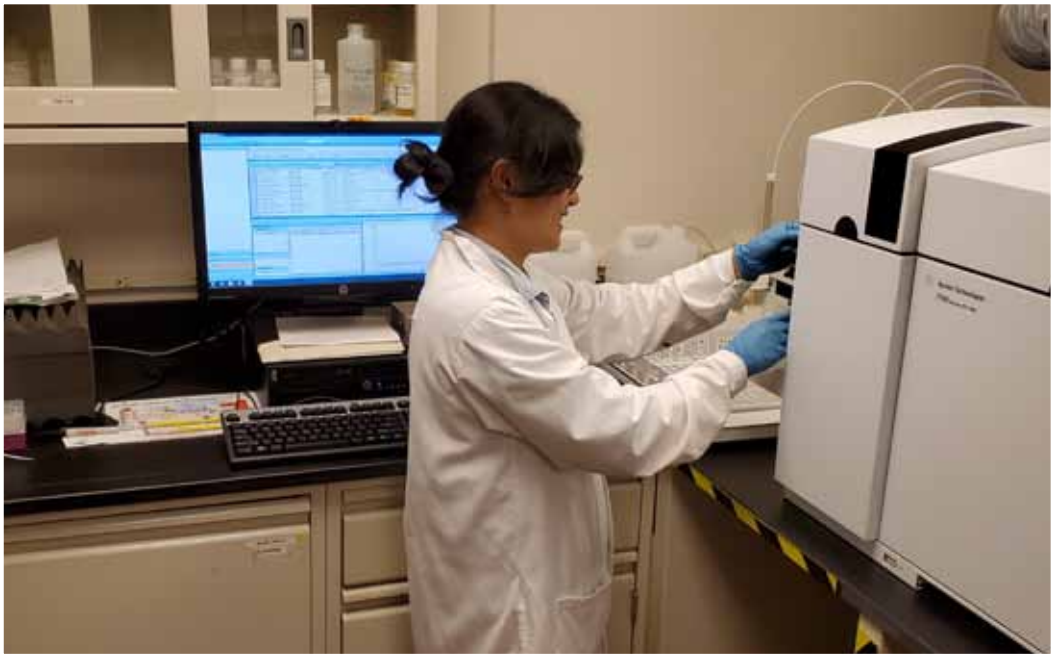


MRRI staffer installs equipment to study sea level rise

MRRI also installed new sediment elevation tables in two marshes, making a total of eight locations in the Meadowlands that are actively being monitored for sea level rise and sediment accretion.

EDUCATION PARTNERSHIPS

The Institute mentored 15 students, including high school students from the Bergen County Academies, and undergraduates, graduates and Ph.D. students from various colleges. MRRI also works with and shares data and analysis from its research with Rutgers University, Princeton University, the New Jersey Institute of Technology, Cornell University, and the City University of New York, greatly assisting professors and students in their research.



Analyzing field samples at MRRI Laboratory



MRRI Drone

DRONE TECHNOLOGY

MRRI’s drone technology continued to support the NJSEA’s storm water management and flood protection efforts by monitoring berms for breaches and supporting tide gate inspections. Data gathered from drone flights and Geographic Information Systems (GIS) digital maps are also used to assist several NJSEA departments in various projects.

MRRI is also involved in drone training programs to create the next generation of drone pilots. The Institute provided training to the American Association of Professional Geologists, Mid-Atlantic Region.

TIDE GATE MONITORING AND FLOOD ALERTS

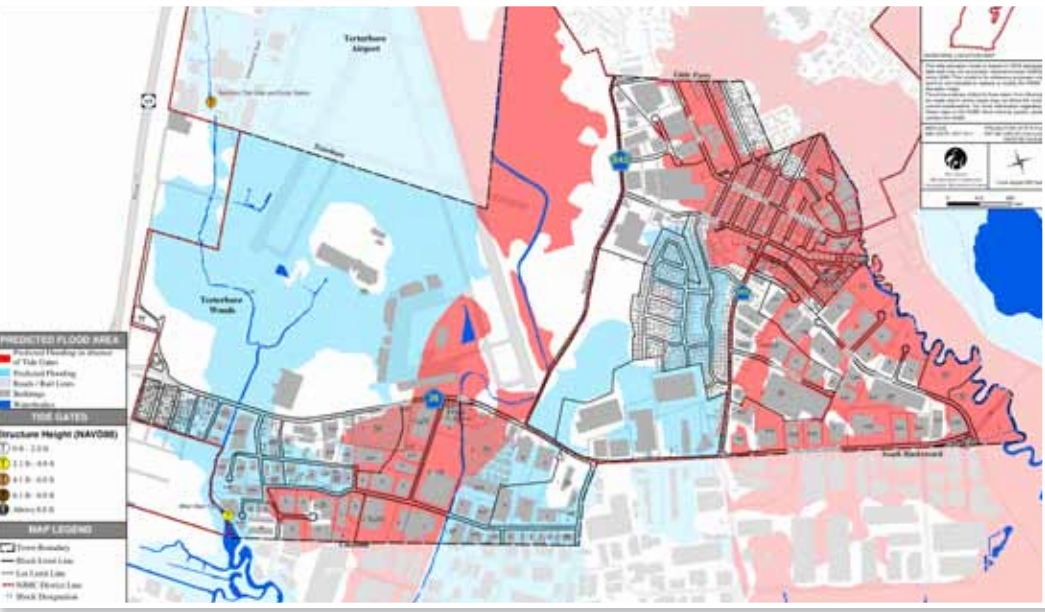
MRRI has installed real time monitoring instruments on 12 key tide gates throughout the Meadowlands District. Water levels are reported via satellite phone to a central command post at the Institute’s headquarters at DeKorte Park in Lyndhurst. Staff continuously monitor tide gate functionality and promptly coordinate repairs when necessary.

MRRI also oversees a water level alert system and provides flood prediction maps to first responders and the public, which is especially critical as the Meadowlands District lies within a low-lying area. The email and text-based alerts for District towns are sent when water levels reach 5.5 feet above sea level and continue to be relayed as the levels rise.

The interactive, web-based flood prediction maps include the parts of District municipalities that may flood from sea surge levels of 4 to 8 feet. The maps may be seen on the MRRI section of the NJSEA website, njsea.com.



MRRI staff checks water elevations at West Riser Tide Gate, Carlstadt



MRRI flood prediction map for Moonachie at a 6’ water level rise.



The Willistown Conservation Trust assists MRRI in installing the Motus Tower on the 1E Landfill in North Arlington

MOTUS TOWER

MRRI staff in 2021 constructed a Motus Tower on NJSEA property, linking up with the Motus Tower network which stretches from Canada down to South America. These towers allow researchers to track the movements of flying animals too small to support traditional satellite or GPS methods. Using the towers, researchers can track migrant species, including songbirds, raptors, seabirds, bats and monarch butterflies, which have been tagged by participant researchers. Motus' goal is to combine individual research projects into a massive, collaborative, coordinated, hemispheric network.

Working with other entities, MRRI staff will be installing geotags on songbirds within the District, and the signals from the tags will be picked up by the Motus Tower network as the birds migrate. Staff will also be downloading the collected data from the Motus Tower, which will then be shared on the Motus website and will be available to the general public and other researchers.

The NJSEA Motus Tower was made possible through the agency's partnership with the Bergen County Audubon Society, Kean University, PSE&G and the Willistown Conservation Trust.

MEADOWLANDS BREEDING BIRD ATLAS

MRRI undertook the development of a first-of-its-kind Meadowlands Breeding Bird Atlas. The Meadowlands has long been recognized as a critical resource for birds and other wildlife, and has been the subject of many research projects on the occurrence, relative abundance and diversity of birds within the District.

However, the breeding habits of birds within the Meadowlands have not been fully studied. To fill this gap, MRRI staff, with assistance from volunteers from the Bergen County Audubon Society and Hackensack Riverkeeper, undertook a study of breeding birds in the Meadowlands District.

The Meadowlands Breeding Bird Atlas (BBA) is a survey of birds that use the Meadowlands for breeding purposes. The results of the Breeding Bird Atlas will inform the NJSEA as to which species breed in the District and what sites and habitats are used for breeding. In addition, the development of the Atlas will help fill an existing research gap and aid in identifying species and habitats that may be important to future conservation and restoration actions. The study will also highlight the success of breeding birds in the Meadowlands, and will be used to develop policies and programs to conserve and restore bird habitat loss within the District.



Vesper Sparrow



Cedar Waxwing



American Kestrel

MRRI...

WILDLIFE HABITATS AND PUBLIC EDUCATION

MRRI staff continued its management of NJSEA open spaces and wildlife habitats by using innovative techniques to better manage invasive species; constructing and placing bird nesting platforms and boxes; and

working with other regional and State agencies and universities to develop more efficient monitoring methods.

To bring information to the public in meaningful ways, MRRI staff worked with universities and non-profit organizations to explore pioneering and new educational platforms to

engage and inform the public. MRRI staff also participated in the NJSEA's successful annual public celebrations of the Meadowlands environment, which included Native Plant Day, Butterfly Day and the Meadowlands Birding Festival. During these events, staff shared their knowledge of the



MRRI takes sediment samples in the marsh



MRRI staff constructed several Osprey nests for the threatened species



Meadowlands Butterfly Day



Meadowlands Birding Festival



Meadowlands Native Plant Day

Meadowlands and its natural resources with the public and led tours through different Meadowlands habitats.

MRRI staff attended numerous conferences, both live (in the field) and virtually, giving presentations at this year's annual meetings for the Society for Ecological Restoration, Society of Wetland Scientists and Restore America's Estuaries Living Shorelines Conference. MRRI also attended conferences and workshops from the Association of State Wetland Managers, Mid-Atlantic Wetland Working Group, The Waterfront Alliance and New Jersey Coastal Resilience Collaborative. ■

PARKS AND NATURAL AREAS



“The NJSEA’s three parks and natural areas, DeKorte Park in Lyndhurst, River Barge Park in Carlstadt, and Mill Creek Marsh in Secaucus, welcomed thousands of visitors, furthering the NJSEA park system’s reputation as the jewel of the Meadowlands.”

RICHARD W. DEKORTE PARK *Lyndhurst*

DeKorte Park features 3.5 miles of walking paths, panoramic views of wetlands and waterways, and birds galore, all framed by the New York City skyline. DeKorte’s most popular walkway, the Marsh Discovery Trail, is a halfmile boardwalk loop that extends over the park’s tidal impoundment, known as the Shorebird Pool. The trail includes bird-blinds, study docks, shaded and open classrooms, and several seating areas. It attracts thousands of nature lovers, bird watchers, school children, and those simply looking for a tranquil place for relaxation.

In 2021, the park’s flora continued to bloom, including milkweed, hibiscus and coneflower. Milkweed is especially important. It’s the only plant on which Monarch Butterflies lay their eggs. With the Monarch population in decline, DeKorte Park’s milkweed is essential to helping the Monarch’s numbers increase.



PARKS AND NATURAL AREAS



Photo courtesy of M.E. Raine



Photo courtesy of M.E. Raine

RIVER BARGE PARK — Carlstadt

The NJSEA's River Barge Park in Carlstadt along the Hackensack River drew all ages to take part in catch-and-release fishing for striped bass, white perch and more. All of the park's public boat slips were rented in 2021. Many others used the park's dock to launch small boats, kayaks and other watercraft.

PARKS AND NATURAL AREAS



Atlantic White Cedar Stumps, Mill Creek Marsh, Secaucus



Secaucus Greenway — Photo courtesy of M.E. Raine



Canoe launch

MILL CREEK MARSH — Secaucus

The most notable characteristic of Mill Creek Marsh is the dozens of ancient White Cedar stumps that dot the waterway. They are the last remnants of a primeval forest that once covered a third of the area for hundreds of years. Today the rot resistant stumps serve as perches for egrets and shorebirds, making the marsh an especially popular destination for bird watchers searching for Snowy Egrets and large flocks of Sandpipers, Green-winged Teal, and American Widgeons. ■

PUBLIC PROGRAMS

DeKorte Park is also a wonderful backdrop for the NJSEA’s Public Programming, including its annual Native Plant Day, Butterfly Day and Birding Festival, all of which are co-sponsored with the Bergen County Audubon Society. The three events attracted upward of 1,000 participants, mostly families that participated in walks, talks and

special presentations including a highly-popular live raptor program.

Through its engaging public programs, the NJSEA imparts the importance of the protection, enhancement and conservation of the Meadowlands environment. For kids, gaining this knowledge at an early age is especially important. The

NJSEA and Bergen County Audubon Society also offer twice-monthly guided nature walks at various Meadowlands District locations, including DeKorte Park and Mill Creek Marsh. The walks give people an opportunity to learn about the history of the parks and their flora and fauna while experiencing them up-close. ■



Meadowlands Butterfly Day tour



Monarch Butterfly



Birders scan the skies at DeKorte Park

EDUCATION



MEC students on the Marsh Discovery Trail at DeKorte Park beneath the NYC Skyline

multi-sensory experience dedicated to improving student understanding of experimental science, human physiology, plant science, and the chemistry and biology that are the basis of nutrition.

In fall 2021, the MEC welcomed back students in Grades K-12 to environmental education classes in DeKorte Park. The park is used as an outdoor classroom as students participate in classes such as Peek at the Past: The history of the Meadowland; Sustainable Design; and The Climate Change Conundrum. ■

The Meadowlands Environment Center (MEC), the educational component of the NJSEA, focused its efforts in 2021 on the subjects of hydroponics, healthy nutrition and food science. In the summer, as part of its partnership with the Garfield school district, educators prepared 360 individual nutrition education kits. Students tuned in to remote lessons and conducted experiments and food preparation designed to foster healthy eating at home.

MEC staff in the summer also



Students prepare to board the MEC Mobile Food Lab

delivered Science, Technology, Reading, Art and Engineering (STREAM) enrichment to the Ridgely Park school district. The

program featured activities on the NJSEA Mobile Food Lab. The colorful, converted 50-foot classroom on wheels provides a



Students learning healthy food preparation on the Mobile Food Lab



Students explore “food smells” on the Mobile Food Lab

FINANCIAL REPORT

STATEMENT OF REVENUES, EXPENSES & CHANGES IN THE POSITION GOVERNMENTAL OPERATIONS December 31, 2020

OPERATING REVENUES	
Fees & Charges	878,000.00
Lease Payments	940,000.00
Revenues from Composting Operation	159,000.00
Other	611,000.00
Total Revenues	2,588,000.00
OPERATING EXPENDITURES	
Governmental Operations	12,811,000.00
Environmental Center Operations	877,000.00
Solar Array 1-A	20,000.00
Other Expenditures	240,000.00
Total Operating Expenditures	13,948,000.00
Excess of Revenues over Expenditures prior to Non-Operating Cost	(11,360,000.00)
NON-OPERATING EXPENSES	
MAGNET Grants	337,000.00
Renewable Energy Transfer	1,349,000.00
Total Non-Operating Expenses	1,686,000.00
Net Excess of Revenue over Expenses	(9,674,000.00)

STATEMENT OF REVENUES, EXPENSES & CHANGES IN NET POSITION BUSINESS-TYPE OPERATIONS December 31, 2020

OPERATING REVENUES	
Sports Complex Revenues	11,892,000.00
Solid Waste Revenues	4,418,000.00
Convention Center	1,117,000.00
Other	9,218,000.00
Total Revenues	26,645,000.00
OPERATING EXPENSES	
Sports Complex	23,863,000.00
Solid Waste	7,962,000.00
Convention Center	4,869,000.00
Depreciation & Amortization	8,255,000.00
Payments Lieu Of Taxes (PILOT)	12,591,000.00
Total Operating Expenditures	57,540,000.00
Operating Loss	(30,895,000.00)
NON-OPERATING INCOME(EXPENSE)	
Other Income	11,500,000.00
Tourism Tax Revenue	3,445,000.00
Interest Income (Expense)	311,000.00
Total Non-Operating Income	15,256,000.00
Change in Net Position	(15,639,000.00)

MEADOWLANDS WILDLIFE



Great Egret resting with a group of Diamondback Terrapins



Downy Woodpecker - Photo courtesy of M.E. Raine



Marsh Wren - Photo courtesy Double D Photography



Yellow-rumped Warbler - Photo courtesy Double D Photography



Northern Harrier - Photo courtesy of M.E. Raine



Greater Yellowlegs - Photo courtesy of M.E. Raine



NEW JERSEY SPORTS AND EXPOSITION AUTHORITY

One DeKorte Park Plaza • Lyndhurst, NJ • 07071

201.460.1700 • www.njsea.com