

WARD Flex®

WARD Flex **MAX**

WARD Flex
UNDERGROUND

CORRUGATED STAINLESS STEEL TUBING

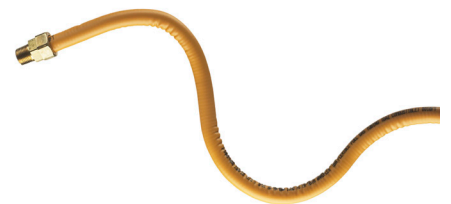
GAS PIPING SYSTEM COMPLIES WITH

ANSI LC 1 CSA 6.26

CSA DESIGN CERTIFIED

PRICE SCHEDULE #310518

EFFECTIVE: MAY 1, 2018



WARD MFG

117 Gulick Street, Blossburg, PA 16912 www.wardmfg.com (800) 248-1027



WARD*Flex*

**CORRUGATED
STAINLESS STEEL TUBING
(CSST)**

(Tubing sold in master cartons only)

	PRODUCT CODE	ITEM#	INNER BOX QUANTITY	MASTER CARTON QUANTITY	LIST PRICE ROLL	PRICE PER FT	UNIT WEIGHT EACH LB
10A(3/8") x 1000 ft ††	10A.WF1000	100	1	1	\$5,721.88	\$5.72	74.00
10A(3/8") x 500 ft †	10A.WF500	102	1	1	\$2,860.94	\$5.72	37.00
10A(3/8") x 250 ft †	10A.WF	104	1	1	\$1,430.48	\$5.72	18.50
10A(3/8") x 100 ft †	10A.WF100	106	3	3	\$572.19	\$5.72	7.40
10A(3/8") x 50 ft †	10A.WF50	108	5	5	\$286.11	\$5.72	3.70
15A(1/2") x 1000 ft ††	15A.WF1000	110	1	1	\$6,393.74	\$6.39	135.10
15A(1/2") x 500 ft †	15A.WF500	112	1	1	\$3,196.87	\$6.39	63.65
15A(1/2") x 250 ft †	15A.WF	114	1	1	\$1,597.35	\$6.39	33.60
15A(1/2") x 100 ft †	15A.WF100	116	3	3	\$639.35	\$6.39	12.50
15A(1/2") x 50 ft †	15A.WF50	118	5	5	\$319.67	\$6.39	6.50
15A(1/2") x 26 ft †	15A.WF26	117	7	7	\$196.11	\$7.54	3.34
20A(3/4") x 1000 ft ††	20A.WF1000	124	1	1	\$8,339.09	\$8.34	171.55
20A(3/4") x 500 ft ††	20A.WF500	122	1	1	\$4,172.20	\$8.34	86.80
20A(3/4") x 250 ft ††	20A.WF250	123	1	1	\$2,084.82	\$8.34	44.00
20A(3/4") x 180 ft †	20A.WF	125	1	1	\$1,501.98	\$8.34	31.00
20A(3/4") x 100 ft †	20A.WF100	126	3	3	\$834.46	\$8.34	17.80
20A(3/4") x 50 ft †	20A.WF50	128	4	4	\$417.21	\$8.34	8.60
20A(3/4") x 26 ft †	20A.WF26	129	6	6	\$255.85	\$9.84	4.54
25A(1") x 250 ft ††	25A.WF250	134	1	1	\$2,974.70	\$11.90	53.75
25A(1") x 180 ft †	25A.WF	135	1	1	\$2,141.80	\$11.90	38.70
25A(1") x 100 ft †	25A.WF100	136	2	2	\$1,189.87	\$11.90	21.50
25A(1") x 50 ft †	25A.WF50	138	3	3	\$594.94	\$11.90	10.75
32A(1 1/4") x 250 ft ††	32A.WF250	144	1	1	\$3,722.46	\$14.89	70.25
32A(1 1/4") x 100 ft †	32A.WF100	146	1	1	\$1,488.98	\$14.89	28.10
32A(1 1/4") x 50 ft †	32A.WF50	148	2	2	\$744.48	\$14.89	14.05
38A(1 1/2") x 150 ft ††	38A.WF150	155	1	1	\$3,920.80	\$26.14	66.60
38A(1 1/2") x 100 ft ††	38A.WF100	156	1	1	\$2,613.85	\$26.14	44.40
38A(1 1/2") x 50 ft ††	38A.WF50	157	1	1	\$1,314.09	\$26.28	22.20
50A(2") x 150 ft ††	50A.WF150	165	1	1	\$5,640.60	\$37.60	84.90
50A(2") x 100 ft ††	50A.WF100	166	1	1	\$3,760.39	\$37.60	56.80
50A(2") x 50 ft ††	50A.WF50	167	1	1	\$1,880.36	\$37.61	28.30

† Requires plastic spool

†† Shipped on wooden spool – cannot ship UPS



WFMAX

(Tubing sold in master cartons only)

ITEM	PRODUCT CODE	ITEM#	INNER BOX QUANTITY	MASTER CARTON QUANTITY	LIST PRICE ROLL	PRICE PER FT	UNIT WEIGHT EACH LB
15C WFMAX (1/2") x 500 ft. ††	15C.WF500	C12	N/A	1	\$3,501.46	\$7.00	73.00
15C WFMAX (1/2") x 250ft. †	15C.WF250	C14	N/A	1	\$1,750.74	\$7.00	36.00
15C WFMAX (1/2") x 100 ft. †	15C.WF100	C16	N/A	3	\$700.30	\$7.00	14.83
15C WFMAX (1/2") x 50 ft. †	15C.WF50	C18	N/A	5	\$384.88	\$7.70	7.80
20C WFMAX (3/4") x 500 ft. ††	20C.WF500	C22	N/A	1	\$4,557.47	\$9.11	99.00
20C WFMAX (3/4") x 250 ft. ††	20C.WF250	C23	N/A	1	\$2,278.73	\$9.11	49.50
20C WFMAX (3/4") x 100 ft. †	20C.WF100	C26	N/A	3	\$911.50	\$9.12	20.66
20C WFMAX (3/4") x 50 ft. †	20C.WF50	C28	N/A	4	\$500.89	\$10.02	10.50
25C WFMAX (1") x 500 ft ††	25C.WF500	C39	N/A	1	\$6,502.73	\$13.01	126.50
25C WFMAX (1") x 250 ft. ††	25C.WF250	C34	N/A	1	\$3,251.37	\$13.01	62.00
25C WFMAX (1") x 100 ft. †	25C.WF100	C36	N/A	2	\$1,300.55	\$13.01	24.50
25C WFMAX (1") x 50 ft. †	25C.WF50	C38	N/A	3	\$715.57	\$14.31	12.50
32C WFMAX (1 1/4") x 250 ft. ††	32C.WF250	C44	N/A	1	\$4,067.68	\$16.27	78.90
32C WFMAX (1 1/4") x 100 ft. †	32C.WF100	C46	N/A	1	\$1,627.07	\$16.27	32.50
32C WFMAX (1 1/4") x 50 ft. †	32C.WF50	C48	N/A	2	\$894.82	\$17.90	15.75
38C WFMAX (1-1/2") X 150FT ††	38C.WF150	C55	N/A	1	\$4,285.14	\$28.57	74.50
38C WFMAX (1-1/2") X 100FT ††	38C.WF100	C56	N/A	1	\$2,856.76	\$28.57	48.00
38C WFMAX (1-1/2") X 50 FT ††	38C.WF50	C58	N/A	1	\$1,428.38	\$28.57	22.75
50C WFMAX (2") X 150 FT ††	50C.WF150	C65	N/A	1	\$6,165.10	\$41.10	89.50
50C WFMAX (2") X 100 FT ††	50C.WF100	C66	N/A	1	\$4,110.05	\$41.10	59.00
50C WFMAX (2") X 50 FT ††	50C.WF50	C68	N/A	1	\$2,055.02	\$41.10	29.50

† Requires plastic spool

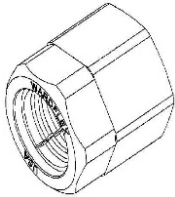
†† Shipped on wooden spool – cannot ship UPS

NEW PRODUCT!



WARDFlex Underground

ITEM	PRODUCT CODE	ITEM#	INNER BOX QUANTITY	MASTER CARTON QUANTITY	LIST PRICE ROLL	PRICE PER FT	UNIT WEIGHT EACH LB
15U WDFLX UG 1/2 X 100 FT U16	15U.WF100	U16	1	1	\$925.53	\$9.26	27.00
15U WDFLX UG 1/2 X 250 FT U14	15U.WF250	U14	1	1	\$2,313.83	\$9.26	67.00
20U WDFLX UG 3/4 X 100 FT U26	20U.WF100	U26	1	1	\$1,173.40	\$11.73	38.00
20U WDFLX UG 3/4 X 250 FT U23	20U.WF250	U23	1	1	\$2,933.51	\$11.73	92.00



Mechanical Joint Fittings Underground

ITEM	PRODUCT CODE	ITEM#	INNER BOX QUANTITY	MASTER CARTON QUANTITY	LIST PRICE EACH	UNIT WEIGHT EACH LB
15M WF UNDERGROUND MALE MJ	15MXD.WFMJUG	U30	15	60	\$74.12	0.72
20M WF UNDERGROUND MALE MJ	20MXE.WFMJUG	U31	8	32	\$89.21	1.01



MECHANICAL JOINT FITTINGS MALE

(Sold in box or master cartons only)
FITTINGS

ITEM	PRODUCT CODE	ITEM#	INNER BOX QUANTITY	MASTER CARTON QUANTITY	LIST PRICE EACH	UNIT WEIGHT EACH LB
10M (3/8") X 1/2" NPT	10MXD.WFMJ	201	24	192	\$25.43	0.31
10M (3/8") x 3/8" NPT*	10MXC.WFMJ	211	24	192	\$25.43	0.26
15M (1/2") x 1/2" NPT	15MXD.WFMJ	202	20	160	\$27.41	0.28
15M (1/2") x 3/8" NPT*	15MXC.WFMJ	212	20	160	\$27.41	0.24
20M (3/4") x 1/2" NPT	20MXD.WFMJ	209	12	96	\$37.38	0.47
20M (3/4") x 3/4" NPT	20MXE.WFMJ	203	12	96	\$37.38	0.47
25M (1") x 3/4" NPT	25MXE.WFMJ	204	8	64	\$62.05	0.65
25M (1") x 1" NPT*	25MX1.WFMJ	205	8	64	\$62.05	0.66
32M (1-1/4") x 1-1/4" NPT*	32MX1B.WFMJ	206	4	32	\$128.21	1.31
38M (1-1/2") x 1-1/2" NPT*	38MX1D.WFMJ	207	2	16	\$263.73	2.90
50M (2") x 2" NPT*	50MX2.WFMJ	208	1	8	\$449.45	3.93

*Note: Specify NPT when placing order



MECHANICAL JOINT FITTINGS FEMALE

(Sold in box or master cartons only)
FITTINGS

ITEM	PRODUCT CODE	ITEM#	INNER BOX QUANTITY	MASTER CARTON QUANTITY	LIST PRICE EACH	UNIT WEIGHT EACH LB
10M (3/8") X 1/2" NPT	10MXD.WFMJF	250	20	160	\$23.93	0.28
15M (1/2") x 1/2" NPT	15MXD.WFMJF	251	20	160	\$27.41	0.28
15MXC (1/2" x 3/8")	15MXC.WFMJF	258	20	160	\$27.41	0.32
20M (3/4") x 3/4" NPT	20MXE.WFMJF	252	12	96	\$39.48	0.60
20M (3/4") x 1/2" NPT*	20MXD.WFMJF	442	12	96	\$37.38	0.67
25M (1") x 3/4" NPT*	25MXE.WFMJF	253	8	64	\$57.72	0.94
25M (1") x 1" NPT*	25MX1.WFMJF	254	8	64	\$57.79	0.79

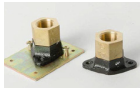
*Note: Specify NPT when placing order



MECHANICAL COUPLINGS

(Sold in box or master cartons only)
FITTINGS

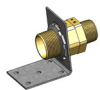
ITEM	PRODUCT CODE	ITEM#	INNER BOX QUANTITY	MASTER CARTON QUANTITY	LIST PRICE EACH	UNIT WEIGHT EACH LB
10M (3/8")	10M.WFC	260	24	192	\$44.35	0.33
15M (1/2")	15M.WFC	261	20	160	\$50.48	0.34
20M (3/4")	20M.WFC	262	12	96	\$69.45	0.57
25M (1")	25M.WFC	263	6	48	\$112.07	0.83
32M (1 1/4")	32M.WFC	264	3	24	\$238.81	1.67
38M (1 1/2")	38M.WFC	265	1	8	\$499.77	3.99
50M (2")	50M.WFC	266	1	8	\$853.90	5.47



OUTDOOR TERMINATION FITTINGS FEMALE

(Sold in box or master cartons only)
FITTINGS

ITEM	PRODUCT CODE	ITEM#	INNER BOX QUANTITY	MASTER CARTON QUANTITY	LIST PRICE EACH	UNIT WEIGHT EACH LB
10M (3/8") X 1/2" NPT	10MXD.WFTOFF	290	15	60	\$43.56	0.79
15M (1/2") x 1/2" NPT	15MXD.WFTOFF	291	15	60	\$43.56	0.80
20M (3/4") x 3/4" NPT	20MXE.WFTOFF	292	8	32	\$54.90	1.17
25M (1") x 1" NPT*	25MX1.WFTOFF	294	5	20	\$68.79	1.50



RIGHT ANGLE MANIFOLD BRACKET ASSEMBLY

ITEM	PRODUCT CODE	ITEM#	INNER BOX QUANTITY	MASTER CARTON QUANTITY	LIST PRICE EACH	UNIT WEIGHT EACH LB
20M (3/4")	20MXE.WFRABTA	414	8	32	\$41.39	0.71



INDOOR TERMINATION FITTINGS

(Sold in box or master cartons only)
FITTINGS

ITEM	PRODUCT CODE	ITEM#	INNER BOX QUANTITY	MASTER CARTON QUANTITY	LIST PRICE EACH	UNIT WEIGHT EACH LB
10M (3/8") X 1/2" NPT	10MXD.WFTF	270	15	60	\$36.77	0.79
15M (1/2") x 1/2" NPT	15MXD.WFTF	271	15	60	\$39.14	0.76
20M (3/4") x 3/4" NPT	20MXE.WFTF	272	8	32	\$41.13	1.01
25M (1") x 3/4" NPT*	25MXE.WFTF	273	5	20	\$64.90	1.39
25M (1") x 1" NPT*	25MX1.WFTF	274	5	20	\$67.07	1.45

*Note: Specify NPT when placing order



OUTDOOR TERMINATION FITTINGS

(Sold in box or master cartons only)
FITTINGS

ITEM	PRODUCT CODE	ITEM#	INNER BOX QUANTITY	MASTER CARTON QUANTITY	LIST PRICE EACH	UNIT WEIGHT EACH LB
10M (3/8") X 1/2" NPT	10MXD.WFOTF	280	15	60	\$43.56	0.81
15M (1/2") x 1/2" NPT	15MXD.WFOTF	281	15	60	\$46.53	0.78
20M (3/4") x 3/4" NPT	20MXE.WFOTF	282	8	32	\$54.90	1.02
25M (1") x 3/4" NPT*	25MXE.WFOTF	283	5	20	\$68.77	1.38
25M (1") x 1" NPT*	25MX1.WFOTF	284	5	20	\$76.04	1.43

*Note: Specify NPT when placing order



FLOOR FLANGE TERMINATION ASSEMBLY

(Sold in box or master cartons only)
FITTINGS

ITEM	PRODUCT CODE	ITEM#	INNER BOX QUANTITY	MASTER CARTON QUANTITY	LIST PRICE EACH	UNIT WEIGHT EACH LB
10M (3/8") X (1/2")	10MXD.WFFFTA	300	15	60	\$36.31	1.00
15M (1/2") X (1/2")	15MXD.WFFFTA	301	15	60	\$41.66	0.90
20M (3/4") X (3/4")	20MXE.WFFFTA	302	8	32	\$46.00	1.56
25MX1 (1" NPT)	25MX1.WFFFTA	304	8	32	\$66.37	1.72



OUTDOOR FLOOR FLANGE TERMINATION NUT ASSEMBLY

(Sold in box or master cartons only)
FITTINGS

ITEM	PRODUCT CODE	ITEM#	INNER BOX QUANTITY	MASTER CARTON QUANTITY	LIST PRICE EACH	UNIT WEIGHT EACH LB
10M (3/8") X (1/2")	10MXD.WFFOTNA	430	15	60	\$42.07	0.95
15M (1/2") X (1/2")	15MXD.WFFOTNA	431	15	60	\$47.44	0.93
20M (3/4") X (3/4")	20MXE.WFFOTNA	432	8	32	\$60.15	1.09
25M (1") X (3/4")	25MXE.WFFOTNA	433	3	18	\$162.97	2.26
32M (1 1/4") X (1 1/4")	32MX1B.WFFOTNA	434	2	12	\$168.94	2.81
38M (1 1/2") X (1 1/2")	38MX1D.WFFOTNA	435	1	6	\$263.31	4.91
50M (2")	50MX2.WFFOTNA	436	1	6	\$353.79	5.51



ADAPTER NUT ASSEMBLY

(Sold in box or master cartons only)
FITTINGS

ITEM	PRODUCT CODE	ITEM#	INNER BOX QUANTITY	MASTER CARTON QUANTITY	LIST PRICE EACH	UNIT WEIGHT EACH LB
10M (3/8") X 3/4" NPT	10MXE.WFANA	340	24	192	\$19.64	0.22
15M (1/2") X 3/4" NPT	15MXE.WFANA	341	24	192	\$21.28	0.16
20M (3/4") X 1" NPT	20MX1.WFANA	342	12	96	\$21.67	0.26
25M (1") X 1 1/4" NPT	25MX1B.WFANA	343	8	64	\$23.48	0.39
32M (1 1/4") X 1 1/2" NPT	32MX1D.WFANA	344	8	64	\$25.44	0.60



INDOOR FLOOR FLANGE TERMINATION NUT ASSEMBLY

(Sold in box or master cartons only)
FITTINGS

ITEM	PRODUCT CODE	ITEM#	INNER BOX QUANTITY	MASTER CARTON QUANTITY	LIST PRICE EACH	UNIT WEIGHT EACH LB
10M (3/8") X (1/2")	10MXD.WFFTNA	420	15	60	\$35.48	0.96
15M (1/2") X (1/2")	15MXD.WFFTNA	421	15	60	\$40.77	0.93
20M (3/4") X (3/4")	20MXE.WFFTNA	422	8	32	\$44.99	1.10
25M (1") X (3/4")	25MXE.WFFTNA	423	3	18	\$111.19	2.28
32M (1 1/4") X (1 1/4")	32MX1B.WFFTNA	424	2	12	\$116.72	2.73
38M (1 1/2") X (1 1/2")	38MX1D.WFFTNA	425	1	6	\$205.13	4.91
50M (2") X (2")	50MX2.WFFTNA	426	1	6	\$274.97	5.68



MECHANICAL TEE MALE

(Sold in box or master cartons only)
FITTINGS

ITEM	PRODUCT CODE	ITEM#	INNER BOX QUANTITY	MASTER CARTON QUANTITY	LIST PRICE EACH	UNIT WEIGHT EACH LB
15M (1/2")	15M.WFT	351	4	32	\$84.81	1.30
15M x 10M (1/2" x 3/8")	15MX10M.WFT	362	4	32	\$75.76	1.29
15M x 10M x 10M (1/2" x 3/8" x 3/8")	15MX10MX10M.WFT	363	4	32	\$104.85	1.27
20M x 15M (3/4" x 1/2")	20MX15M.WFT	365	4	24	\$105.35	1.43
20M x 15M x 15M (3/4" x 1/2" x 1/2")	20MX15MX15M.WFT	366	4	24	\$124.09	1.34
20M (3/4")	20M.WFT	352	4	24	\$105.15	1.51
25M (1")	25M.WFT	353	2	16	\$206.55	2.24
25M x 15M (1" x 1/2")	25MX15M.WFT	358	2	16	\$206.55	2.37
25M x 20M (1" x 3/4")	25MX20M.WFT	357	2	16	\$237.96	2.20
25M x 20M x 20M (1" x 3/4 x 3/4")	25MX20MX20M.WFT	360	2	16	\$152.05	2.29
25M x 20M x 15M (1" x 3/4" x 1/2")	25MX20MX15M.WFT	359	2	16	\$149.24	2.26
32M (1 1/4")	32M.WFT	354	1	6	\$243.81	3.95
38M (1 1/2")	38M.WFT	355	1	4	\$441.33	7.94
50M (2")	50M.WFT	356	1	2	\$508.72	11.41



MECHANICAL TEE FEMALE

(Sold in box or master cartons only)
FITTINGS

ITEM	PRODUCT CODE	ITEM#	INNER BOX QUANTITY	MASTER CARTON QUANTITY	LIST PRICE EACH	UNIT WEIGHT EACH LB
15M (1/2") X 1/2" NPT	15MXD.WFFT	401	4	32	\$58.84	1.22
20MX 1/2"	20MXD.WFFT	402	4	24	\$119.20	1.49
20MX 3/4"	20MXE.WFFT	403	4	24	\$119.20	1.36
25MX 3/4"	25MXE.WFFT	408	2	16	\$213.40	2.13
25MX 1"	25MX1.WFFT	413	2	16	\$213.40	1.98
32MX1B (1 1/4" x 1 1/4")	32MX1B.WFFT	405	1	6	\$399.36	3.95
38MX1D (1 1/2" x 1 1/2")	38MX1D.WFFT	407	1	4	\$431.18	8.08
50MX2 (2" x 2")	50MX2.WFFT	409	1	2	\$500.69	11.02



VALVE ASSEMBLY

(Sold in box or master cartons only)
FITTINGS

ITEM	PRODUCT CODE	ITEM#	INNER BOX QUANTITY	MASTER CARTON QUANTITY	LIST PRICE EACH	UNIT WEIGHT EACH LB
10M (3/8") X 1/2" NPT	10MXD.WFV	370	10	80	\$53.67	0.64
15M (1/2") x 1/2" NPT	15MXD.WFV	371	10	80	\$60.52	0.55
20M (3/4") x 3/4" NPT	20MXE.WFV	372	4	32	\$76.55	1.02
25M (1") x 3/4" NPT	25MXE.WFV	373	4	32	\$87.53	1.13



RIGHT ANGLE VALVE ASSEMBLY

(Sold in box or master cartons only)
FITTINGS

ITEM	PRODUCT CODE	ITEM#	INNER BOX QUANTITY	MASTER CARTON QUANTITY	LIST PRICE EACH	UNIT WEIGHT EACH LB
15M (1/2")	15MXD.WF90VA	410	10	40	\$64.00	0.71
20M (3/4")	20MXD.WF90VA	411	10	40	\$66.47	0.82



APPLIANCE STUB OUT

(Sold in box or master cartons only)
FITTINGS

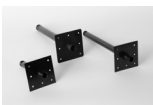
ITEM	PRODUCT CODE	ITEM#	INNER BOX QUANTITY	MASTER CARTON QUANTITY	LIST PRICE EACH	UNIT WEIGHT EACH LB
1/2"	D.WFASO	381	15	15	\$29.05	0.83
3/4"	E.WFASO	382	15	15	\$32.56	1.10



FIREPLACE STUB OUT

(Sold in box or master cartons only)
FITTINGS

ITEM	PRODUCT CODE	ITEM#	INNER BOX QUANTITY	MASTER CARTON QUANTITY	LIST PRICE EACH	UNIT WEIGHT EACH LB
1/2 X 7"	DX7.WFFPSO	950	10	10	\$29.11	1.36



METER STUB OUT

(Sold in box or master cartons only)
FITTINGS

ITEM	PRODUCT CODE	ITEM#	INNER BOX QUANTITY	MASTER CARTON QUANTITY	LIST PRICE EACH	UNIT WEIGHT EACH LB
1/2 X 6"	DX6.WFMSO	392	10	10	\$28.69	0.87
1/2 x 12"	DX12.WFMSO	393	10	10	\$29.32	1.33
3/4 x 6"	EX6.WFMSO	394	10	10	\$29.32	1.00
3/4 x 12"	EX12.WFMSO	395	10	10	\$29.93	1.36
1 x 6"	1X6.WFMSO	396	10	10	\$37.96	1.17
1 x 12"	1X12.WFMSO	397	10	10	\$39.97	1.78
1 1/4 X 6"	1BX6.WFMSO	398	10	10	\$49.12	1.41
1 1/4 X 12"	1BX12.WFMSO	399	10	10	\$53.39	1.95



MALLEABLE IRON MANIFOLD

(Sold in any quantity) ACCESSORIES

ITEM	PRODUCT CODE	ITEM#	INNER BOX QUANTITY	MASTER CARTON QUANTITY	LIST PRICE EACH	UNIT WEIGHT EACH LB
1/2" WITH (3) 1/2" OUTLETS	DX3D.WFM	600	15	30	\$48.45	1.52
3/4" with (3) 1/2" outlets	EX3D.WFM	601	15	30	\$52.26	1.44
1/2" with (4) 1/2" outlets	DX4D.WFM	602	12	24	\$59.28	2.01
3/4" with (4) 1/2" outlets	EX4D.WFM	603	12	24	\$59.28	1.92
3/4" with (1)3/4"&(3)1/2" outlets	EX3DE.WFM	604	12	24	\$59.28	1.88
1 X 4 3/4 WARDFLEX MANIFOLD	1X4E.WFM	618	24	24	\$61.18	2.69
2" x 1 1/2" with (4) 1" outlets	2X1DX41.WFM	609	2	2	\$71.74	5.58



CROSS MANIFOLD

(Sold in any quantity) ACCESSORIES

ITEM	PRODUCT CODE	ITEM#	INNER BOX QUANTITY	MASTER CARTON QUANTITY	LIST PRICE EACH	UNIT WEIGHT EACH LB
1/2" WITH (6) 1/2" OUTLETS	DX6D.WFM	608	6	24	\$53.88	1.46
3/4" with (4) 1/2" and (2) 3/4" outlets	EX4D2E.WFM	607	6	24	\$59.82	1.89
1" x 3/4" with (4) 1/2" and (2) 3/4" outlets	1XEX4D2E.WFM	606	3	12	\$61.57	3.19
1 1/4" x 1" with (4) 1/2" and (2) 3/4" outlets	1BX1X4D2E.WFM	605	3	12	\$61.57	2.96



QUICK CONNECT

(Sold in any quantity) ACCESSORIES

ITEM	PRODUCT CODE	ITEM#	INNER BOX QUANTITY	MASTER CARTON QUANTITY	LIST PRICE EACH	UNIT WEIGHT EACH LB
WF SHUT OFF OUTLET, QC	104014.WFQCSO	500	1	50	\$132.24	0.80
WF SURFACE MOUNT KIT, QC	103233.WFQCKT	501	1	20	\$247.52	1.85



FLUSH MOUNT GAS VALVE KIT

(Sold in any quantity) ACCESSORIES

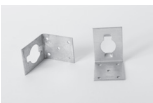
ITEM	PRODUCT CODE	ITEM#	INNER BOX QUANTITY	MASTER CARTON QUANTITY	LIST PRICE EACH	UNIT WEIGHT EACH LB
FIRE RATED GAS OUTLET BOX	D.WFFRBOX	706	1	5	\$289.65	2.36
15M (1/2")	15MXD.WFFMKIT	701	10	10	\$103.44	1.25
20M (3/4" X 1/2")	20MXD.WFFMKIT	702	10	10	\$114.51	1.40
20M(3/4" X 3/4") WDFLX FSH MNT KIT	20MXE.WFFMKIT	703	10	10	\$114.51	1.58
WDFLX FSH MNT KIT FACE PLATE	1.WFFMKITFP	705	1	10	\$16.95	0.18



AGA APPROVED GAS VALVE

(Sold in any quantity) ACCESSORIES

ITEM	PRODUCT CODE	ITEM#	INNER BOX QUANTITY	MASTER CARTON QUANTITY	LIST PRICE EACH	UNIT WEIGHT EACH LB
1/2" T-204	D.WFV	651	12	120	\$16.14	0.40
3/4" T-100	E.WFV	652	12	72	\$30.82	0.86



RIGHT ANGLE MOUNTING BRACKET

(Sold in any quantity) ACCESSORIES

ITEM	PRODUCT CODE	ITEM#	INNER BOX QUANTITY	MASTER CARTON QUANTITY	LIST PRICE EACH	UNIT WEIGHT EACH LB
10A/15A (3/8" / 1/2")	10A/15A.WFMB	720	24	192	\$7.01	0.18
20A (3/4")	20A.WFMB	721	12	96	\$7.01	0.17



STRIPWOUND HOSE

(Sold in any quantity) ACCESSORIES

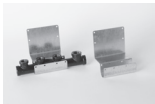
ITEM	PRODUCT CODE	ITEM#	INNER BOX QUANTITY	MASTER CARTON QUANTITY	LIST PRICE EACH	UNIT WEIGHT EACH LB
10A (3/8")	10A.WFGF	620	50 feet	1	\$107.06	9.00
10A (3/8")	10A.WFGFC	621	12 inch	100	\$3.97	0.29
15A (1/2")	15A.WFGF	622	50 feet	1	\$174.47	20.00
15A (1/2")	15A.WFGFC	623	12 inch	75	\$4.77	0.40
20A (3/4")	20A.WFGF	624	50 feet	1	\$227.50	24.00
20A (3/4")	20A.WFGFC	625	12 inch	40	\$7.54	0.49
25A (1")	25A.WFGF	626	50 feet	1	\$325.20	28.00
25A (1")	25A.WFGFC	627	12 inch	25	\$9.01	0.64
32A (1 1/4")	32A.WFGF	628	50 feet	1	\$511.94	35.00
32A (1 1/4")	32A.WFGFC	629	12 inch	20	\$10.93	0.68



SYSTEM LINE REGULATOR

(Sold in any quantity) REGULATORS

ITEM	PRODUCT CODE	ITEM#	INNER BOX QUANTITY	MASTER CARTON QUANTITY	LIST PRICE EACH	UNIT WEIGHT EACH LB
3253D (1/2")	3253D.WFREG	640	18	18	\$77.84	0.78
3255E (3/4")	3255E.WFREG	641	4	4	\$142.65	1.86
32571B (1 1/4")	32571B.WFREG	642	1	12	\$387.98	4.04
3253DOP (1/2")	3253D.WFREGOP	643	18	18	\$343.87	1.43
3255EOP (3/4")	3255E.WFREGOP	644	9	9	\$694.05	3.43
32571BOP (1 1/4")	32571B.WFREGOP	648	4	4	\$2,433.45	1.86
3253 LP (1/2")	3253D.WFREGLP	645	18	18	\$77.12	0.76
3255 LP (3/4")	3255E.WFREGLP	646	4	4	\$142.10	1.82



MANIFOLD BRACKET

(Sold in any quantity) ACCESSORIES

ITEM	PRODUCT CODE	ITEM#	INNER BOX QUANTITY	MASTER CARTON QUANTITY	LIST PRICE EACH	UNIT WEIGHT EACH LB
BRACKET ASSEMBLY	1.WFMBRKA	690	20	20	\$20.10	0.90



STRIKER PLATE

(Sold in any quantity) ACCESSORIES

ITEM	PRODUCT CODE	ITEM#	INNER BOX QUANTITY	MASTER CARTON QUANTITY	LIST PRICE EACH	UNIT WEIGHT EACH LB
QUARTER	Q.WFSP	610	80	80	\$1.96	0.08
HALF	H.WFSP	611	40	40	\$3.84	0.30
FULL	F.WFSP	612	40	40	\$8.01	0.50
LARGE	L.WFSP	613	20	20	\$35.36	1.00
DOUBLE TOP	DT.WFSP	614	40	40	\$3.84	0.39
EXTENDED	EF.WFSP	615	40	40	\$10.81	0.61



HARDENED WHEEL TUBING CUTTER (WFTC)

(Sold in any quantity) CUTTERS & WHEELS

ITEM	PRODUCT CODE	ITEM#	INNER BOX QUANTITY	MASTER CARTON QUANTITY	LIST PRICE EACH	UNIT WEIGHT EACH LB
10A - 20A CUTTER	10A/20A.WFTC	662	0	1	\$167.70	0.53
REPLACEMENT WHEEL	10A/20A.WFTCW	663	0	1	\$27.99	0.05
20A - 32A CUTTER	20A/32A.WFTC	664	0	1	\$171.84	0.66
REPLACEMENT WHEEL	20A/32A.WFTCW	665	0	1	\$29.94	0.07
38A - 50A CUTTER	38A/50A.WFTC	667	0	1	\$370.82	3.25
REPLACEMENT WHEEL	38A/50A.WFTCW	668	1	6	\$31.39	0.20



COATING STRIPPER

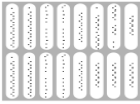
(Sold in any quantity) ACCESSORIES

ITEM	PRODUCT CODE	ITEM#	INNER BOX QUANTITY	MASTER CARTON QUANTITY	LIST PRICE EACH	UNIT WEIGHT EACH LB
WARD FLEX STRIPPER KNIFE	1.WFS	672	5	30	\$104.74	0.39

SELF-FUSING TAPE - each roll 1" X 12 yards long

(Sold in any quantity) ACCESSORIES

ITEM	PRODUCT CODE	ITEM#	INNER BOX QUANTITY	MASTER CARTON QUANTITY	LIST PRICE EACH	UNIT WEIGHT EACH LB
ROLL - YELLOW	WFTAPE	825	0	1	\$83.76	0.40
ROLL - BLACK	WFTAPE	827	0	1	\$83.76	0.42



APPLIANCE LINE LABEL

(Sold in any quantity) ACCESSORIES

ITEM	PRODUCT CODE	ITEM#	INNER BOX QUANTITY	MASTER CARTON QUANTITY	LIST PRICE EACH	UNIT WEIGHT EACH LB
1 SET	WDFLXALL	680	25 sheets	N/A	\$55.69	0.20



PLASTIC REEL

(Sold in any quantity) ACCESSORIES

ITEM	PRODUCT CODE	ITEM#	INNER BOX QUANTITY	MASTER CARTON QUANTITY	LIST PRICE EACH	UNIT WEIGHT EACH LB
REEL	1.WFSPOOL	710	1	N/A	\$0.00	9.67



CADDY FOR THE PLASTIC REEL

(Sold in any quantity) ACCESSORIES

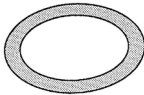
ITEM	PRODUCT CODE	ITEM#	INNER BOX QUANTITY	MASTER CARTON QUANTITY	LIST PRICE EACH	UNIT WEIGHT EACH LB
CADDY	1.WFCADDY	711	1	N/A	\$266.38	8.00



BONDING CLAMPS

(Sold in any quantity) ACCESSORIES

ITEM	PRODUCT CODE	ITEM#	INNER BOX QUANTITY	MASTER CARTON QUANTITY	LIST PRICE EACH	UNIT WEIGHT EACH LB
3/8" - 1"	1.WFBC	800	16	128	\$13.65	0.18
1 1/4 - 2"	2.WFBC	801	8	64	\$41.06	0.41



O-RING SETS FOR OUTDOOR TERMINATION FITTING

(Sold in any quantity) CUTTERS & WHEELS

ITEM	PRODUCT CODE	ITEM#	INNER BOX QUANTITY	MASTER CARTON QUANTITY	LIST PRICE EACH	UNIT WEIGHT EACH LB
10A WDFLX O-RING	10A.WFOR	920	10	10	\$4.31	0.09
15A WDFLX O-RING	15A.WFOR	921	10	10	\$4.31	0.06
20A WDFLX O-RING	20A.WFOR	922	10	10	\$5.37	0.07
25A WDFLX O-RING	25A.WFOR	923	10	10	\$5.37	0.08
32A WDFLX O-RING	32A.WFOR	924	10	10	\$5.64	0.12
38A WDFLX O-RING	38A.WFOR	925	1	10	\$5.64	0.06
50A WDFLX O-RING	50A.WFOR	926	10	10	\$5.64	0.17

GASKETS

(Sold in any quantity) ACCESSORIES

ITEM	PRODUCT CODE	ITEM#	INNER BOX QUANTITY	MASTER CARTON QUANTITY	LIST PRICE EACH	UNIT WEIGHT EACH LB
15A WDFLX	15A.WFG	901	10	10	\$2.62	0.00
20A WDFLX	20A.WFG	902	10	10	\$3.20	0.00
25A WDFLX	25A.WFG	903	10	10	\$3.74	0.00
32A WDFLX	32A.WFG	904	10	10	\$4.43	0.01
38M WDFLX	38M.WFG	907	10	10	\$3.48	0.01
50M WDFLX	50M.WFG	908	10	10	\$4.03	0.01

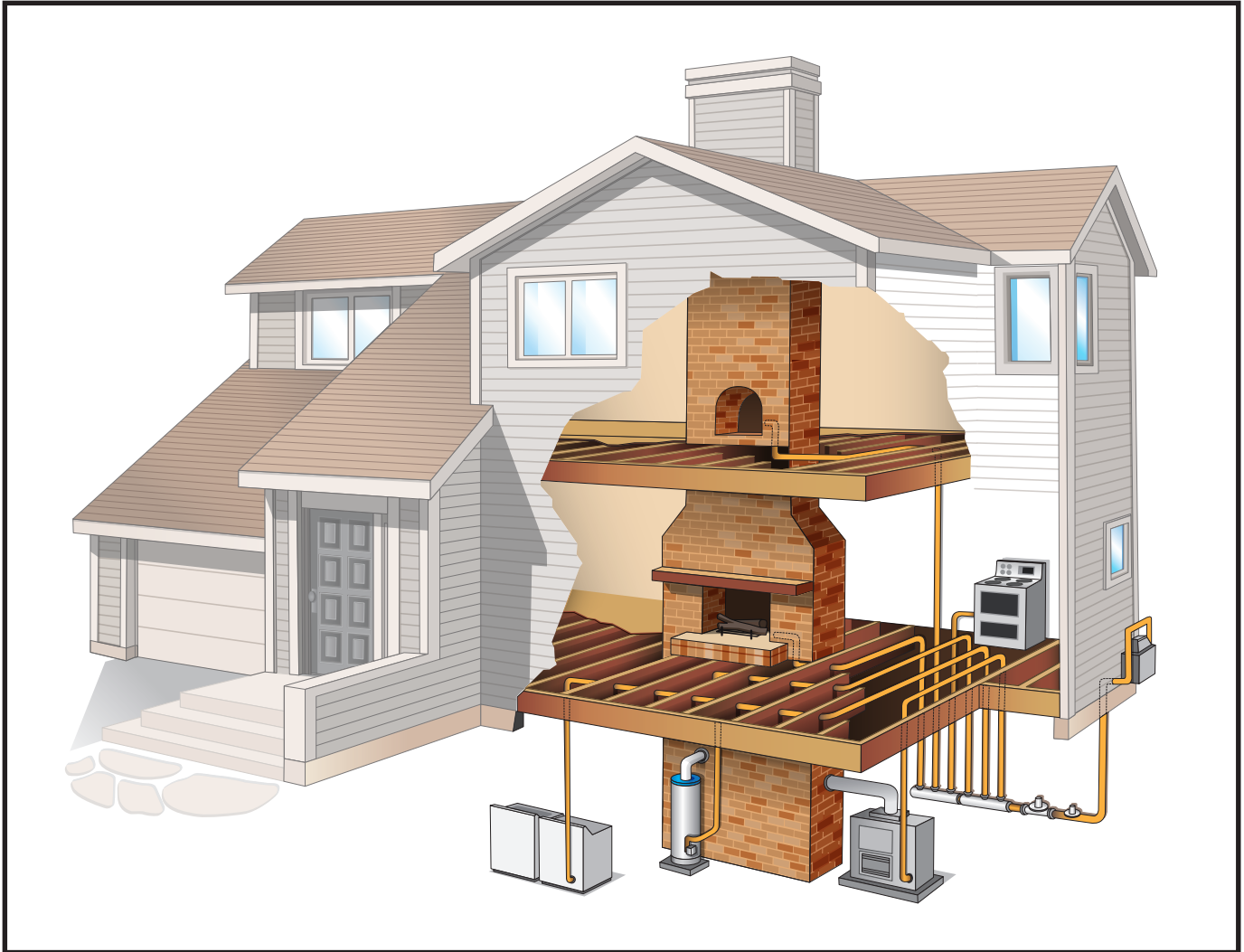
RETAINERS

(Sold in any quantity) ACCESSORIES

ITEM	PRODUCT CODE	ITEM#	INNER BOX QUANTITY	MASTER CARTON QUANTITY	LIST PRICE EACH	UNIT WEIGHT EACH LB
15M WF RETAINER 927	15M.WFR	927	5	1000	\$1.77	0.02
20M WF RETAINER 928	20M.WFR	928	5	800	\$2.45	0.04
25M WF RETAINER 929	25M.WFR	929	5	600	\$3.47	0.05
32M WF RETAINER 937	32M.WFR	937	2	100	\$3.06	0.09

INSTALLATION INSTRUCTIONS

1. Installation must be performed strictly in accordance with local plumbing and/or building codes, and in accordance with the Ward Design and Installation Guide.
2. Installation must be performed by trained installer who has been trained in a training program recognized by Ward and has been issued a Certificate of Training from Ward.
3. Pressure testing must be performed during rough construction with piping exposed.
4. Ward assumes no responsibility for product or labor for any system which has been improperly installed.



WARD MFG

117 GULICK STREET | BLOSSBURG, PA 16912 | PH: 800-248-1027 | FAX: 570-241-0100

WWW.WARDMFG.COM



TERMS AND CONDITIONS OF SALE:

- 1. PRICES:** This price sheet supersedes all previous issues. Prices in price sheets are subject to change without notice. Prices apply only to standard sizes as listed in catalog.
- 2. APPROVAL & ACCEPTANCE OF ORDERS:** All orders are accepted on the basis of prices in effect at the time of shipment.
- 3. TAXES:** To the prices and terms quoted, there will be added any Manufacturers or Sales Tax payable on the transaction under any effective statute, unless there is a valid exemption on
- 4. CREDIT TERMS:** Two percent cash discount tenth - Net 30 days.
- 5. DELIVERY & SHIPMENT OF GOODS:** All goods are shipped at buyer's risk. Shipments should be carefully examined upon delivery and before the carrier's delivery receipt is signed. If any loss or damage is evident, the buyer should make an appropriate notation on the delivery receipt and insist that the carrier's driver initial such exception. The contents of all packages should be carefully examined for concealed damage as soon as possible after delivery, so that the carrier can be requested, within 48 hours after delivery, to arrange for prompt inspection of the damaged goods. Completion of all orders accepted and of all agreements or contracts entered into are subject to any delay which might be occasioned by labor disputes, accidents, embargoes, trade restrictions, governmental directives or other causes beyond our control. All promises of shipment will be as closely estimated as possible. We use our efforts in every case to ship within the time promised, but cannot guarantee to do so. All claims for shortage must be made on receipt of goods. We prove our count by weighing the package. Claims for shortage are subject to that test. Typographical, clerical, arithmetical errors or omissions in orders, invoices, quotations, price schedules, acknowledgments, or other documents are subject to correction.
- 6. RETURN OF GOODS:** No goods will be taken back and credited without prior approval and issuance of a return goods authorization (RGA) number. All materials returned with our permission must be goods of our manufacture, and in clean saleable condition. Credit will only be allowed on the basis of prices agreed upon. If product returned is a result of a customer ordering error or overstocking situation the credit will be less 20 percent to cover handling costs, less any costs of returning to a saleable condition, and less transportation charges on original and return shipments. Orders for special goods are not subject to cancellation for any reason, after work has been started on them, except upon agreement to make payment for all work which has been performed.
- 7. FREIGHT TERM:** Shipments of \$2000 or more will be prepaid in the continental U.S. (except Alaska) We reserve the right to choose shipping point and carrier.
- 8. CARTON & BOX QUANTITY ADJUSTMENT:** On orders received for less than box quantities, we reserve the right to adjust to the next box above the number of pieces shown on the order.
- 9. WEIGHTS:** The weights per piece or per box are given in this price sheet, catalogs and quotations are not guaranteed, but are approximate and for your convenience.
- 10. SPECIAL CONDITIONS:** Illustrations in catalogs are representations of each product line. Materials, Designs, and in catalogs and price sheets are subject to change without notice in keeping our policy of continuing product improvement.
- 11. SPECIAL CONDITIONS:** Any additional cost incurred in packaging or in making any special tests or inspection requested by Buyer in addition to those commercially supplied by Ward Manufacturing, LLC. will be charged to Buyer. Such tests and inspections will be made at the factory before date of shipment. Orders for WARDFLEX will be subject to a net freight charges.
- 12. US EXPORT COMPLIANCE:** The products sold by Ward Manufacturing, Inc. may be subject to the export control laws and regulations of the United States Government. Buyer may not make any disposition of such products, by way of sale, export, re-export, transshipment or otherwise, except as permitted under applicable U.S. law.

WARRANTY - WARDFLEX GAS PIPING SYSTEM

Ward warrants its products to be free from any defect of workmanship and material. If the products are defective, the measure of the damage is the price of the defective goods only. No charge for labor or expense required to repair defective goods, or occasioned by them, will be allowed.

This warranty shall not apply to any part or parts of the WardFlex Gas Piping System product if it has been installed, altered, repaired or misused, through negligence or otherwise, in a way that in the opinion of Ward affects

the reliability of, or detracts from, the performance of the product. Nor does this warranty cover replacements or repairs necessitated by loss or damage resulting from any cause beyond the control of Ward, including but not limited to acts of God, acts of government, floods or fires.

The foregoing is in lieu of any other warranties, expressed, implied or statutory and Ward neither assumes nor authorizes any person to assume for Ward any other obligation or liability in connection with the sales of its products.

NOTES:

NOTES: