

NEBO®

TWYST™ Z

200 LUMEN LED FLASHLIGHT
with ARCUS™ LED & 3 Light Modes



user manual
item #6372

Introducing:

ARCUS
LED TECHNOLOGY



ARCUS is a new proprietary CxOxB LED technology that allows the shaping of light into full 3D patterns, giving optimal, bright, uniform light exactly where it's needed.

With TWYST™ Z, the ARCUS LED provides 120...beam pattern in work light mode and a 360...beam pattern when used in lantern mode.

To reveal ARCUS LED, simply twist the bezel counter-clockwise.

3 LIGHT MODES



FLASHLIGHT:
HIGH: 200 LUMENS

Run Time: 2 Hours / Viewing Distance: 110 Meters

LOW: 20 LUMENS

Run Time: 20 Hours / Viewing Distance: 34 Meters



WORK LIGHT:
HIGH: 75 LUMENS (120... Light Coverage)

Run Time: 10 Hours / Viewing Distance: 10 Meters

LOW: 8 LUMENS

Run Time: 26 Hours / Viewing Distance: 4 Meters



LANTERN:
HIGH: 200 LUMENS (360... Light Coverage)

Run Time: 2 Hours / Viewing Distance: 15 Meters

LOW: 20 LUMENS

Run Time: 16 Hours / Viewing Distance: 4 Meters

NOTE: Run times and viewing distance will change in relation to the light's dimming function.

DIMMABLE BEAM

Each light mode is fully dimmable. Hold button for 1.5 seconds to activate dimming function.

¥ Light will dim from 100% to 10% over 3 seconds.

¥ Light will flash quickly when it reaches 10% to indicate it has reached the lowest light output.

¥ Release button at any time to achieve desired brightness.

¥ Light will continue to dim/brighten between 100% and 10% until button is released.

LIGHTING INSTRUCTIONS

Press button 1x to activate flashlight

Press 2x to activate worklight

Press 3x to activate lantern

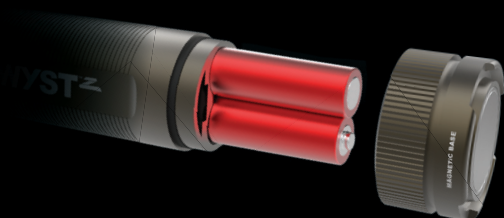
Press again to turn Off

(Note: Leave any mode On for 5 seconds or longer
and your next press of the button turns light Off)

BATTERY INSTALLATION

TWYST™ Z is powered by 4 AAA batteries.

1. To open battery compartment, turn the end cap counter-clockwise
2. Remove old batteries and dispose of properly.
3. Insert new batteries as shown below.
4. Reattach end cap by turning clockwise.



POWERFUL MAGNETIC BASE

For convenient, hands-free lighting

Powerful
magnetic base



4X ADJUSTABLE ZOOM

¥ Turn the head counter-clockwise
to go from flood to spot

¥ Turn the head clockwise
to go from spot to flood



DISTRIBUTED BY NEBO®,
A DIVISION OF ALLIANCE SPORTS GROUP L.P.
3025 N. GREAT SOUTHWEST PARKWAY
GRAND PRAIRIE, TX 75050
www.nebotools.com

All copyrighted and copyrightable materials, including, without limitation, the logo, design, text, graphics, pictures, copywriting and the selection and arrangement ("Materials") thereof are ALL RIGHTS RESERVED Copyright © 2015 Alliance Sports Group.

Warning: This product may contain a chemical known to the state of California to cause cancer and birth defects and other reproductive harm.

International patents pending.

WARNING

AVOID EYE INJURY- Do not stare directly into beam or shine it directly into anyone's face. Doing so for more than a few seconds could cause retinal damage. Do not allow children to use LED lights unless under the supervision of an adult.

CAUTION

Do not mix old and new batteries. Do not mix alkaline, standard (carbon-zinc), or rechargeable (NiCad or NiMH) batteries. Do not use rechargeable or reusable alkaline batteries. Dispose of old batteries properly.



QUALITY GUARANTEE

This product is guaranteed against all defects in workmanship and materials for the original owner for one year from the date of purchase. Damage to or failure of the flashlight or any component thereof due to alteration, misuse, battery leakage or lack of maintenance will void any and all guarantees. Damage by leakage of batteries should be taken up with the manufacturer of the battery using their damage claim instructions. For any additional information call 1-800-255-6061.