

Hart & Cooley Type B Gas Vent

Safe. Durable. Easy to install. The total package.

Safety:

The *Hart & Cooley*® double-wall, air-insulated **B-Vent** system is secured by locking joints. Properly installed, the vent won't come apart through vibration, and offers protection against vent failure or fire hazard. **Type B Gas Vent** is designed for negative pressure applications and flue gas temperatures not exceeding 400°F above ambient for Category I appliances.

Durability:

By using high-quality materials and skilled workmanship, our galvanized outer pipe and aluminum inner pipe provide protection against corrosion and external damage.

Easy and Secure Installation:

Install with confidence! *Hart & Cooley's* simple two step engagement helps installers achieve installation quickly and easily. Simply engage pipe sections and secure by sliding the lock ring over security tabs. This unique system creates a strong connection without the use of screws. With our complete offering of fittings, supports, and caps, *Hart & Cooley B-Vent* is your most valuable teammate to complete any installation.

Warranty

Hart & Cooley warrants **type-B gas vent** for a period of twelve (12) months after shipment, ensuring product is free from material or workmanship defect under normal service and use for which the products were designed.

Customer Service & Tech Support

Have a question about a product or installation? Our customer service & technical support staff is readily available to take your call and make your job easier.

Checkout our website, which offers a convenient search tool and contains our entire line of products in a user-friendly format.



Hart & Cooley, Inc.

5030 Corporate Exchange Blvd. SE
Grand Rapids, MI 49512

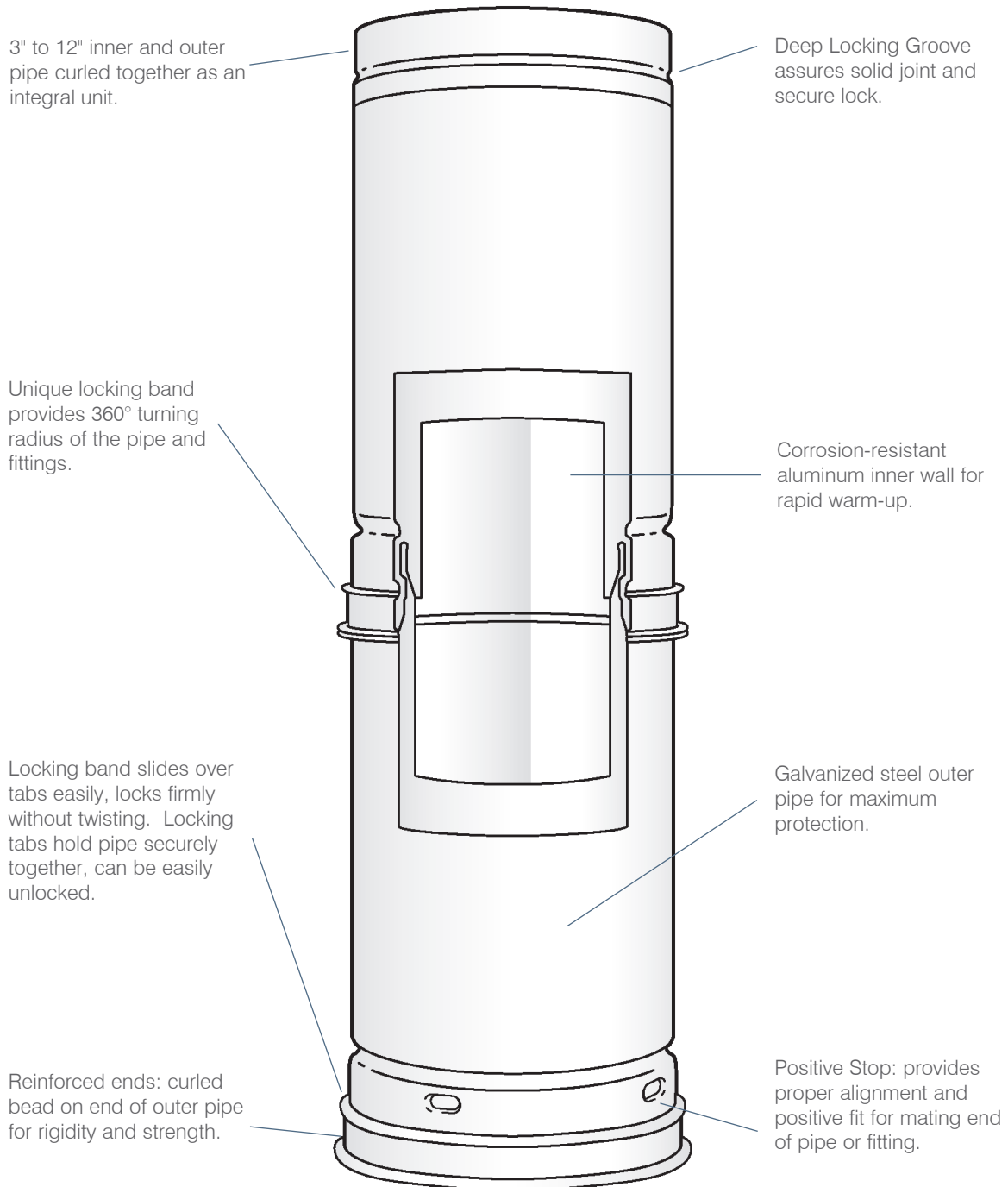
P (800) 433-6341

F (800) 223-8461

hartandcooley.com

Construction Features

Sizes 3" to 12" diameters

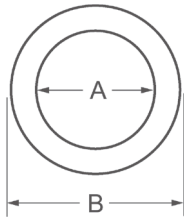


Hart & Cooley® B-Vent

complies with the latest Underwriters Laboratories Standard No. 441

Adjustable Storm Collar - SC

14" through 30"

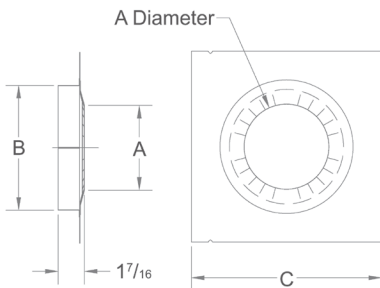
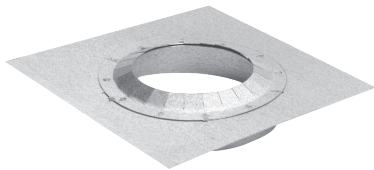


- Designed to be snug around vent pipe for a weather-tight fit
- For use with roof flashing and caulk

Model Number	Size	A	B
14SC	14"	15"	18 7/8"
16SC	16"	17"	21 1/4"
18SC	18"	19"	23 1/4"
20SC	20"	21"	25 15/16"
22SC	22"	23"	28 5/16"
24SC	24"	25"	30 11/16"
26SC	26"	27"	33 1/16"
28SC	28"	29"	35 1/16"
30SC	30"	31"	37 1/16"

Gripper Support - RGS*

3" through 10"

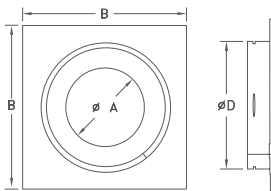
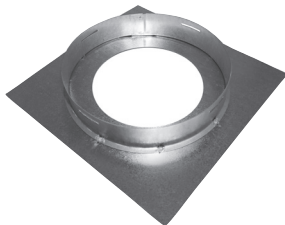


- Supports 30' of pipe
- Acts as a firestop
- 7", 8" and 10" not UL-listed

Model Number	Size	A	B	C
3RGS	3"	3 1/2"	5 1/2"	9"
4RGS	4"	4 1/2"	6 1/2"	10"
5RGS	5"	5 1/2"	7 1/2"	11"
6RGS	6"	6 1/2"	8 1/2"	12"
7RGS	7"	7 1/2"	-	13"
8RGS	8"	8 1/2"	-	14"
10RGS	10"	10 1/2"	-	16"

Firestop Support - FSP*

3" through 8"



- Supports 20' of pipe
- Acts as a firestop

Model Number	Size	A	B	C	D
3FSP	3"	3 5/8"	7 1/2"	3 1/2"	5 1/2"
4FSP	4"	4 5/8"	8 1/2"	4 1/2"	6 1/2"
5FSP	5"	5 5/8"	9 1/2"	5 1/2"	7 1/2"
6FSP	6"	6 5/8"	10 1/2"	6 1/2"	8 1/2"
7FSP	7"	8 1/8"	12"	8"	10"
8FSP	8"	9 1/8"	13"	9"	11"

