

SPECIFICATIONS

IMPORTANT

THE SPECIFICATIONS GIVEN IN THIS PUBLICATION DO NOT INCLUDE NORMAL MANUFACTURING TOLERANCES. THEREFORE, THIS UNIT MAY NOT MATCH THE LISTED SPECIFICATIONS EXACTLY. ALSO, THIS PRODUCT IS TESTED AND CALIBRATED UNDER CLOSELY CONTROLLED CONDITIONS, AND SOME MINOR DIFFERENCES IN PERFORMANCE CAN BE EXPECTED IF THOSE CONDITIONS ARE CHANGED.

SUPER TRADELINE / TRADELINE MODELS

SUPER TRADELINE/TRADELINE models offer features not available on TRADELINE or standard models, and are designed to replace a wide range of Honeywell and competitive models. SUPER TRADELINE/TRADELINE models are selected and packaged to provide ease of stocking and handling as well as maximum replacement value. Specifications for SUPER TRADELINE and TRADELINE models are the same as those of standard models except as noted below.

SUPER TRADELINE MODELS AVAILABLE:

L4064B Fan and Limit Controller.

L4064T Fan and Limit Controller.

SUPER TRADELINE FEATURES INCLUDE:

- Universal adapters for 5/8, 3/4, and 1 in. diameter elements.
- Wiring space for related controls.
- All TRADELINE pack features as listed below.

TRADELINE MODELS AVAILABLE:

L4064B Fan and Limit Controller.

TRADELINE FEATURES INCLUDE:

- High limit stop—adjustable, factory-set at 200 F [93 C].

- Mounting means—surface or rigid bracket.
- Two round wiring knockouts in top and 2 slotted in bottom of case.
- 110265A Rigid Bracket, single wing with No. 8-32 setscrew.
- Mounting screws provided.
- 123198A Push-in Screw Terminal Adapter.
- 127123 Steel Bushing with 135236 Wire Snap Ring to adapt insertion element to 1 in. [25.4 mm] hole in plenum.
- 137813 Strain Relief Bushing.
- TRADELINE pack with cross reference label and special instruction sheet.

STANDARD MODELS

MODELS: L4064A—F,J,R,T Fan and Limit Controllers. See Tables I and II. Table I gives specifications in

Fahrenheit degrees. Table II gives specifications in Celsius degrees.

TABLE I — L4064 SPECIFICATIONS IN DEGREES FAHRENHEIT.

MODEL	SENSING ELEMENT	MANUAL FAN SWITCH	SCALE RANGE	FAN-ON		FAN-OFF		HIGH LIMIT	
				RANGE	FACTORY- SET	RANGE	FACTORY- SET	RANGE	FACTORY- SET
L4064A	Helical bimetal	No	50 to 250	65 to 215	125	50 to 200	100	100 to 250	250
L4064B		Yes							
L4064C	Flat, spiral bimetal	No							
L4064D		Yes							
L4064E	Helical bimetal	No	80 to 350	100 to 305	None — fan comes on 90 sec. after call for heat	80 to 290	100 to 250		
L4064F		Yes							
L4064J		No							
L4064R		Yes							
Standard L4064T		No							
SUPER TRADELINE L4064T		Yes							

(continued on page 3)

ORDERING INFORMATION

WHEN PURCHASING REPLACEMENT AND MODERNIZATION PRODUCTS FROM YOUR TRADELINE WHOLESALE OR YOUR DISTRIBUTOR, REFER TO THE TRADELINE CATALOG OR PRICE SHEETS FOR COMPLETE ORDERING NUMBER, OR SPECIFY—

1. Order number.
2. Insertion depth—L4064A,B,E,F,J,R,T only.
3. Adjustable high limit stop, if desired (include desired set point).
4. Accessories, if desired.

IF YOU HAVE ADDITIONAL QUESTIONS, NEED FURTHER INFORMATION, OR WOULD LIKE TO COMMENT ON OUR PRODUCTS OR SERVICES, PLEASE WRITE OR PHONE:

1. YOUR LOCAL HONEYWELL RESIDENTIAL GROUP SALES OFFICE (CHECK WHITE PAGES OF PHONE DIRECTORY).
2. RESIDENTIAL GROUP CUSTOMER SERVICE
HONEYWELL INC., 1885 DOUGLAS DRIVE NORTH
MINNEAPOLIS, MINNESOTA 55422 (612) 542-7500

(IN CANADA—HONEYWELL CONTROLS LIMITED, 740 ELLESMERE ROAD, SCARBOROUGH, ONTARIO M1P 2V9) INTERNATIONAL SALES AND SERVICE OFFICES IN ALL PRINCIPAL CITIES OF THE WORLD.

TABLE II — L4064 SPECIFICATIONS IN DEGREES CELSIUS.

MODEL	SENSING ELEMENT	MANUAL FAN SWITCH	SCALE RANGE	FAN-ON		FAN-OFF		HIGH LIMIT				
				RANGE	FACTORY-SET	RANGE	FACTORY-SET	RANGE	FACTORY-SET			
L4064A	Helical bimetal	No	10 to 121	18 to 102	52	10 to 93	38	38 to 121	121			
L4064B		Yes										
L4064C	Flat, spiral bimetal	No										
L4064D		Yes										
L4064E	Helical bimetal	No	27 to 177	38 to 152	None — fan comes on 90 sec. after call for heat	27 to 143		66 to 177				
L4064F		Yes										
L4064J		No	10 to 121					38 to 121				
L4064R		Yes										
Standard L4064T		No										
SUPER TRADELINE L4064T		Yes										

ELECTRICAL RATINGS (amperes):

	120 Vac		240 Vac		24 Vac		
	FAN	LIMIT	FAN	LIMIT	FAN	LIMIT	TIMER
Full Load	14	8	7	4	—	—	—
Locked Rotor	84	48	42	24	—	—	—
Max. Amp	—	—	—	—	—	2	.2

HIGH LIMIT DIFFERENTIAL: 25 F [14 C].
 LIMIT STOP SETTING: 150 F to 250 F [66 C to 121 C] in 10 F [5.6 C] increments (specify when ordering).
 MINIMUM SWITCH TEMPERATURE:
 L4064A,T—minus 40 F [minus 40 C].
 L4064B-F,J,R—plus 32 F [0 C].
 MAXIMUM SWITCH TEMPERATURE: 190 F [88 C].
 MAXIMUM ELEMENT TEMPERATURE:
 L4064A-F,T—350 F [177 C].
 L4064J,R—600 F [316 C].
 MOUNTING DIMENSIONS: See Fig. 1.

Pilot Duty—2 A at 25 Vac; 0.25 A at 0.25 to 12 Vdc.
 Maximum Combined Connected Load—2000 VA.

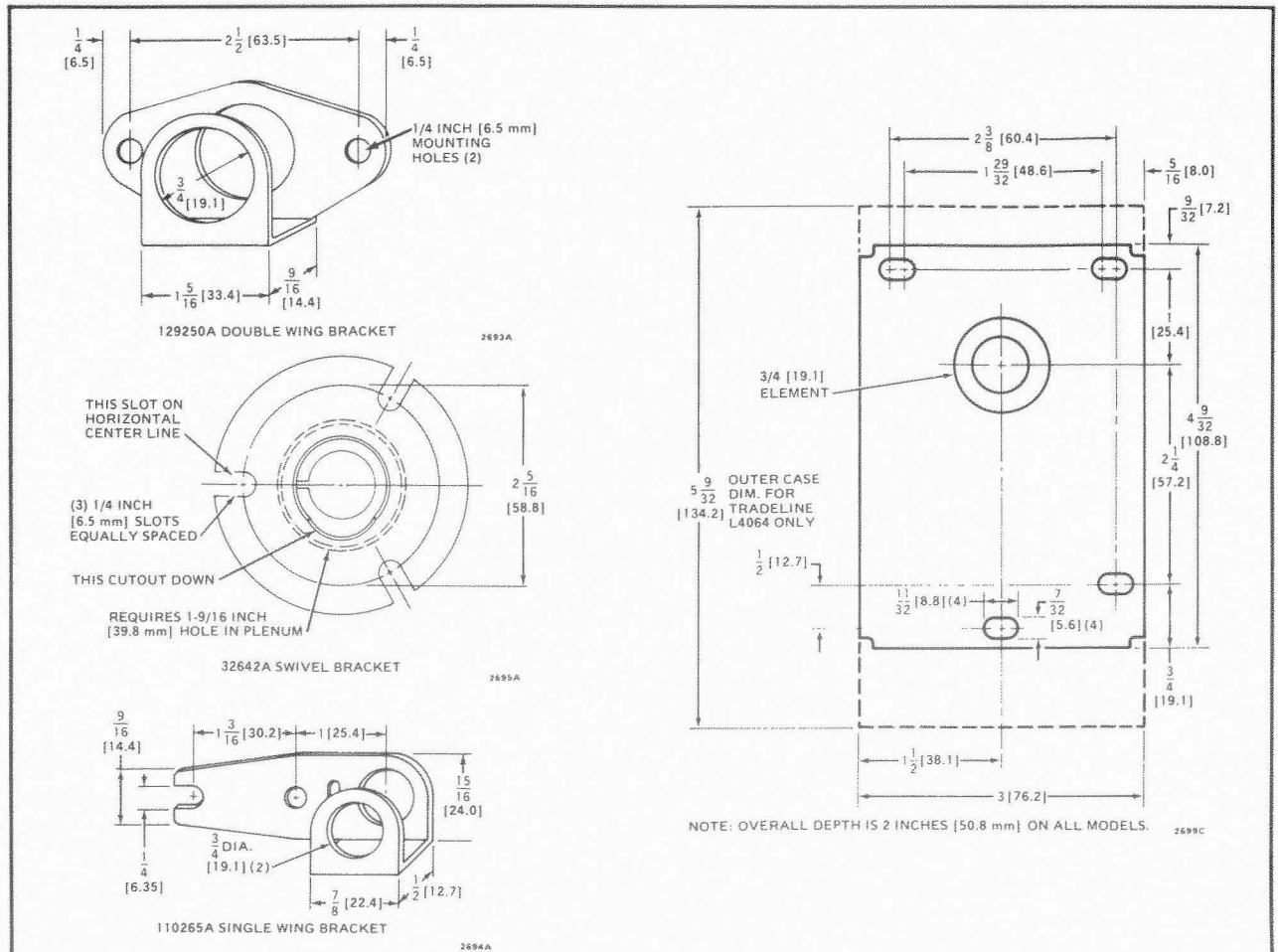


FIG. 1—MOUNTING DIMENSIONS IN in. [mm IN BRACKETS].

SETTINGS AND ADJUSTMENTS

CAUTION

When adjusting the fan and limit setting levers, hold the scaleplate dial to keep it from turning and straining the sensing element.

IMPORTANT

To L4064T uses a bimetal heater to turn on the fan 90 seconds after a call for heat. When the call for heat ends, the fan will continue to run until the fan-off temperature is reached. If the L4064T is used to replace an L4064A or B, the blower fan may circulate cold air until the plenum heats up. No adjustment of the fan-on time is possible.

Move the setting levers to the control points recommended by the burner or furnace manufacturer. Use gentle finger pressure.

1. Move the FAN OFF setting lever to the temperature at which the fan is to stop to prevent circulation of cool air.

2. Move the FAN ON setting lever as follows:

L4064A-F—FAN ON range is from 15 F [8 C] above the FAN OFF setting to 35 F [19 C] below the LIMIT OFF setting.

L4064J,R—FAN ON range is from 20 F [11 C] above the FAN OFF setting to 45 F [25 C] below the LIMIT OFF setting.

L4064T—Move the FAN ON indicator as needed for setting the FAN OFF indicator and LIMIT indicator. The FAN ON indicator is nonfunctional on the L4064T; the bimetal heater acts to turn on the fan 90 seconds after a call for heat from the thermostat.

3. Move the LIMIT setting lever to the temperature at which the high limit switch is to break the burner circuit. L4064A-F,T limit range is 100 F to 250 F [55 C to 139 C]; L4064J,R limit range is 150 F to 350 F [83 C to 194 C].

MANUAL SWITCH (L4064B,D,R,T)

For constant fan operation (overriding fan setting levers), push the FAN switch button in. For fan to cycle automatically, pull button out.

OPERATION

L4064A-F,J,R—As the plenum temperature rises, the bimetal sensing element of the control warps and mechanically makes the fan contacts (at the FAN ON temperature setting). During normal operation, the call for heat ends before the LIMIT setting is reached and the fan contacts break as the plenum temperature falls and the FAN OFF setting is reached.

If the call for heat continues until the temperature in the plenum rises to the LIMIT setting, the bimetal

element will mechanically break the limit contacts and de-energize the gas control circuit.

L4064T—The operation of the L4064T is the same as that of the L4064B except that this combination fan and limit control uses a bimetal heater to heat its bimetal sensing element. This heater acts to anticipate the rise in plenum temperature and turns on the fan 90 seconds after the thermostat calls for heat.

CHECKOUT

When installation is complete, turn on the power supply. Disconnect the fan at the fan motor or L4064. Set thermostat to call for heat. Burner should come on and limit controller should shut burner off when plenum temperature reaches the limit set point. Turn off power, reconnect the fan switch, turn on power and again set

thermostat to call for heat. On L4064A-F,J,R fan should come on when plenum temperature has reached fan-on setting. On L4064T, fan should come on 90 seconds after call for heat. Fan should shut off on all L4064 models when call for heat ends and plenum has cooled to fan-off setting.

Dear Customer,

We welcome your comments and suggestions for improving this publication. Your assistance is greatly appreciated and will enable us to provide better technical information for you.

Please send your comments and suggestions to:

Honeywell Inc.
10400 Yellow Circle Drive
Minnetonka, Minnesota 55343
ATTN: RCC Publications Supervisor MN38-3247

HONEYWELL MINNEAPOLIS, MN 55408 INTERNATIONAL Sales Offices in all principal cities of the world. Manufacturing in Australia, Canada, Finland, France, Germany, Japan, Mexico, Netherlands, Spain, Taiwan, United Kingdom, U.S.A.

PRINTED IN U.S.A.