

Digital Mini System Feeder

DMF150

SIMPLE USER-FRIENDLY CONTROL

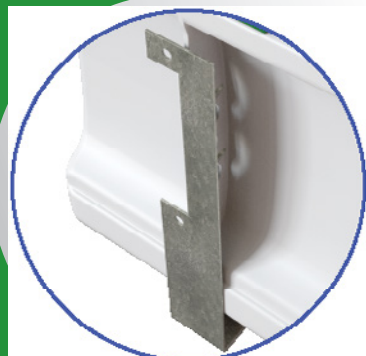
Feature-Rich User Friendly Digital Control

- User Defined Pressure Setting (0-45psig)
 - With adjustable cut-in / cut-out setting
- User Defined Low Pressure Alert
- User Defined High Pressure Alert
- Low Level Alert Output
- LED Warning Indicator
- Set-up and Diagnostic Menu

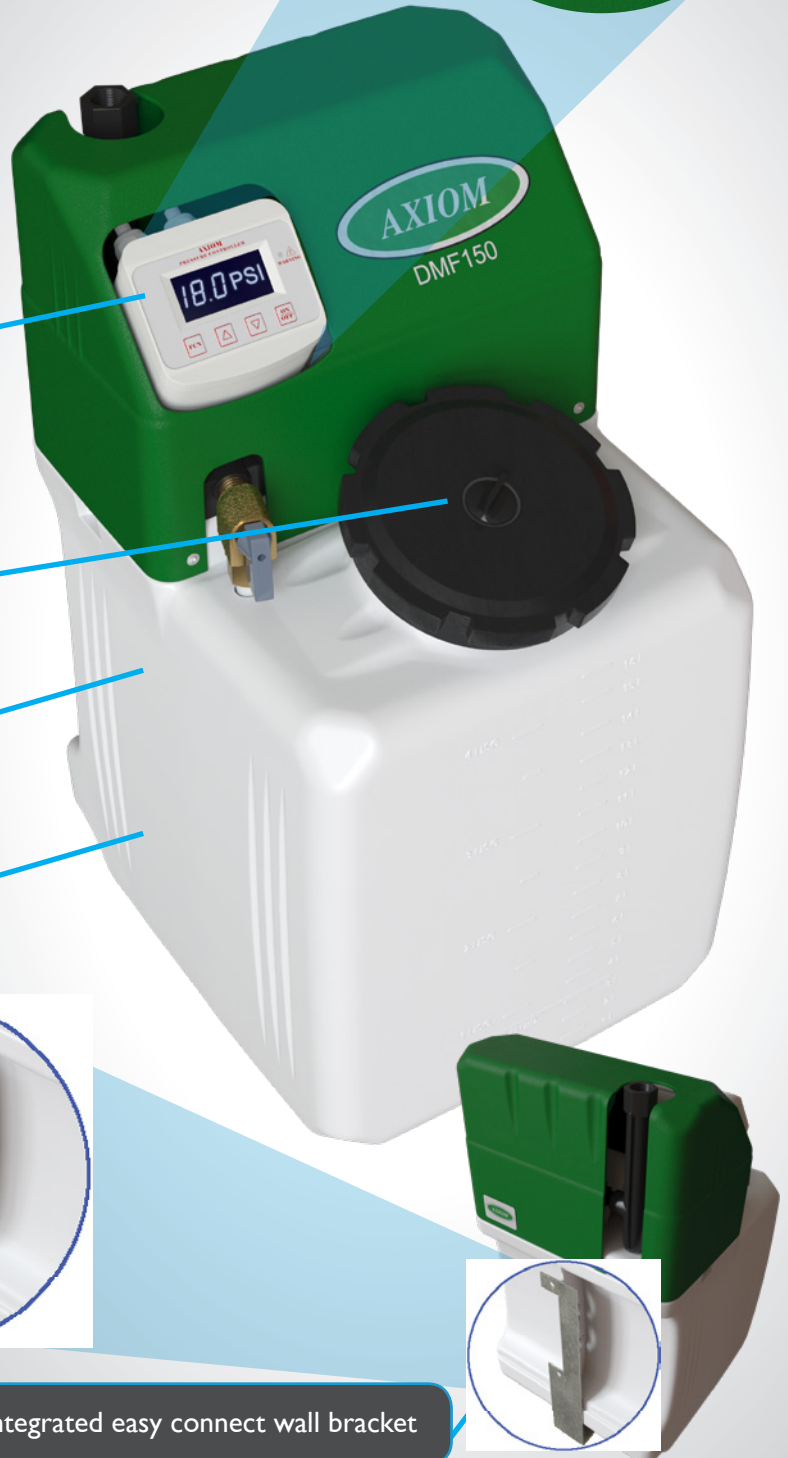
Tilted 5" easy fill access on front of tank

17 liter (4.5 USG) tank for storage and mixing of system make-up fluid

Translucent reservoir provides visual notice that system may have developed a leak and mitigates potential for flooding disaster



Integrated easy connect wall bracket





System Feeders

PressurePal

DMF150



MF200



DMF300



SF100



Axiom System Feeders are designed to simplify the process of maintaining the cold static fluid pressure in closed-loop heating and cooling systems. Having a reservoir of suitable make-up fluid eliminates the need for backflow prevention and helps solve many of the associated problems when using domestic water as a make-up fluid.

APPLICATIONS:

System Feeders are ideal for boiler/chiller systems, snow/ice melt circuits, outside air heating/cooling glycol coils, geothermal and solar heating systems.

Features and Benefits

- Automatically maintains a minimum system pressure at a user defined setting
- Feeders are compatible with both water and glycol/water solutions
- **Provides leak detection** – dropping fluid level provides immediate notice that the system is losing fluid
- **Prevents major floods** – in the event of a system rupture, only the contents of the tank will be pumped into the system
- All units plug into any standard 115 VAC outlet
- Diverter valve allows easy purging of air on initial start-up and manual mixing of fluid in the tank
- Fluid drained for service from the system can easily be recovered and used to replenish the system following service
- Fluid level switch shuts the pump off if the storage tank level gets too low
- Does not require any annual recertification testing

ACCESSORIES

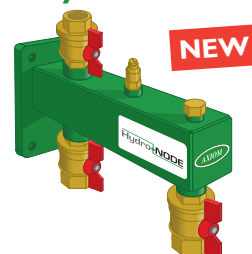
Alarm Panel



Tank Shelf



Hydro-NODE



SF100 Specialty Build Options (SF100-x-xx):

- HP-L (100 USG, 25-85 PSI)
- 2PRV (Unit Designed for 2 Systems)
- 2PRV-L (100 USG, 2 Systems)
- 2PRV-HP (25-85PSI, 2 Systems)
- D-P-4x (Dual Pump, Alternating Control Panel 4x)
- UHP (35-125 PSI)
- UHP-L (100 USG, 35-125 PSI)
- D (Dual Pump)
- D-2PRV (Dual Pump, 2 Systems)
- D-P (Dual Pump, Alternating Control Panel)

Custom units available upon request



Visit our sizing calculator online at
AxiomInd.com/system-feeders.php

Which System Feeder
is right for you?

Use the calculator below
to determine which System
Feeder will best suit your
application.

Feeder-Sizer

System Details:

Total System Volume (gal.):

Cold Static Fill Pressure (psi):

Select

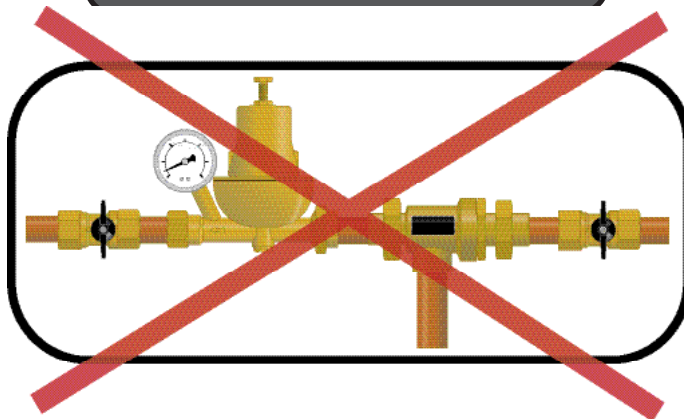
System Feeder Selection Chart

Model	System Volume	System Cold Static Fill Pressure
DMF150 (4.5 USG)	Below 285 L (75 US Gal)	0 to 310 kPa (0-45 psig)
MF200 (6 USG)	Below 285 L (75 US Gal)	69 to 170 kPa (10-25 psig)
DMF300 (17 USG)	285-1135 L (75-300 US Gal)	0 to 310 kPa (0-45 psig)
MF300 (17 USG)	285-1135 L (75-300 US Gal)	69 to 170 kPa (10-25 psig)
SF100 (55 USG)	1135-3030 L (300-800 US Gal)	35-380 kPa (5-55 psig)
SF100-L (100 USG)	Above 3030 L (800 US Gal)	35-380 kPa (5-55 psig)
SF100-HP (55 USG)	1135-3030 L (300-800 US Gal)	170-585 kPa (25-85 psig)

THIS



REPLACES THIS





Part #	Description	Wgt (lbs.)	Page
ASFI-075	3/4" Sight Flow Indicator	2	16
ASFI-100	1" Sight Flow Indicator	2	16
ASFI-K	ASFI Rebuild Kit	1	16
ASFI-Tool	ASFI Opening Tool	1	16
AXTH-BIO-500mL	Biocide 500mL (16.9oz) bottle.Treats 100 litres (25 gal) per bottle	2	12
AXTH-BIO-TEST	Biocide test kit	0.5	14
AXTH-BOILER-1L	1L (33.8oz) bottle.Treats 5 to 10 litres (1.32 to 2.64 gal)	5	13
AXTH-C10-20L	Clean10 20 L (5.28 gallons) jug.Treats 200 to 400 litres (50 to 100 gal)	45	12
AXTH-C10-5L	Clean10 5 L (1.32 gallons) jug.Treats 50 to 100 litres (12.5 to 25 gal)	12	12
AXTH-C3-20L	Clean3 20 L (5.28 gallons) jug.Treats 4000 litres (1060 gal)	45	12
AXTH-C3-2L	Clean3 2L (67.6 oz.) bottle.Treats 400 litres (100 gal) per bottle	5	12
AXTH-C3-500mL	Clean3 500mL (16.9oz) bottle.Treats 100 litres (25 gal) per bottle	2	12
AXTH-C5-20L	Clean5 20 L (5.28 gallons) jug.Treats 4000 litres (1060 gal)	45	12
AXTH-C5-2L	Clean5 2L (67.6 oz.) bottle.Treats 400 litres (100 gal) per bottle	5	12
AXTH-C5-500mL	Clean5 500mL (16.9oz) bottle.Treats 100 litres (25 gal) per bottle	2	12
AXTH-CF9A-1L	1L (33.8 oz) bottle c/w extended spray nozzle. For use on Condensing Heat Exchangers	5	13
AXTH-CF9AL	Qty 2 - 1L (33.8 oz) bottles c/w extender spray nozzle. For use on Condensing Aluminum Heat Exchangers	10	13
AXTH-CFSTEEL-1L	1L (33.8 oz) bottle c/w extender spray nozzle. For use on Condensing Stainless Steel Heat Exchangers	5	13
AXTH-INJET	Reusable chemical injection bottle	3	14
AXTH-P1-20L	Protect1 20 L (5.28 gallons) jug.Treats 4000 litres (1060 gal)	45	12
AXTH-P1-2L	Protect1 2L (67.6 oz.) bottle.Treats 400 litres (100 gal) per bottle	5	12
AXTH-P1-500mL	Protect1 500mL (16.9oz) bottle.Treats 100 litres (25 gal) per bottle	2	12
AXTH-P1-Test	Protect1 concentration test kit	1	14
AXTH-pH-Strips	pH test strips	0.5	14
CBF-2	Chemical Bypass Feeder - 2USG	25	17
CBF-2-HP	Chemical Bypass Feeder, Removable Lid - 2USG, 300psi	28	17
CBF-5	Chemical Bypass Feeder - 5USG	55	17
CBF-5-HP	Chemical Bypass Feeder, Removable Lid - 5USG, 300psi	58	17
CBF-B	Chemical Bypass Feeder - Wall Bracket for CBF-2 series	2	17
DMF150	Digital System Mini Feeder - 0-45psi, 4.5USG	10	2
DMF300	Digital System Mini Feeder - 0-45psi, 18USG	24	2
EP10	PEX-Pal - Tubing Organizer End Plate (10 pack)	1.5	15
EXCHBAG-1	Permeable resin exchange bag	5	6,8
FH-10	3/4" Stainless Steel Filter Housing (10" Filter)	6	16
FH-20	1" Stainless Steel Filter Housing (20" Filter)	10	16
HN-1	Hydro-NODE Expansion Tank Bracket	3	18
HN-2	Hydro-NODE Expansion Tank Bracket - Full Kit	4	18
LEADER-CartHP	HighPower Mixed bed resin cartridge for Leader 4.75USG (18 L)	33	6
MBR-12	HighPower Mixed bed resin (12 L)	30	6,8
MBR-2	HighPower Mixed bed resin for the Puropal-complete-2	5	8
MF200	System Mini Feeder - 6USG, 10-25psi	14	2
MF200-1430	Wall mount bracket for MF200	12	2
MF300	System Mini Feeder - 17USG, 10-25psi	24	2
NC-1	Condensate Neutralizer - "NeutraPal" Full Kit (1.6Gal/hr)	6	10
NC-1S	Condensate Neutralizer - "NeutraPal" Hard Pipe Kit (1.6Gal/hr)	4	10
NC-2	Condensate Neutralizer - "NeutraPal" Full Kit (4.0Gal/hr)	10	10
NC-2S	Condensate Neutralizer - "NeutraPal" Hard Pipe Kit (4.0Gal/hr)	8	10
NM-1	Condensate Neutralizer - NC-1 Replacement LipHter+ media	3	10