



FOR LEASE

# Pacific Financial Center

800 WEST SIXTH STREET, LOS ANGELES, CA 90017

## Property Highlights



**CLASS A  
TOWER**

**227K SF OFFICE  
BUILDING**

**FROM** ±1,160-14,342 SF of office space available

**NEW** ground-floor full service restaurant with outdoor patio and bar

**RATE** \$33.00/SF/year FSG

**PRIME** central downtown location, proximity to freeways and Metro rail station

**24/7** security and access

**JOHN ANTHONY, SIOR**

213.225.7218

[john.anthony@kidder.com](mailto:john.anthony@kidder.com)

LIC N° 01226464

**CHRISTOPHER STECK**

213.225.7231

[christopher.steck@kidder.com](mailto:christopher.steck@kidder.com)

LIC N° 01841338

**CHRISTOPHER GIORDANO**

213.225.7219

[christopher.giordano@kidder.com](mailto:christopher.giordano@kidder.com)

LIC N° 01928706

**PHILLIP TAGGART**

213.225.7237

[phil.taggart@kidder.com](mailto:phil.taggart@kidder.com)

LIC N° 02149291

**Kidder  
Mathews**

[KIDDER.COM](http://KIDDER.COM)

This information supplied herein is from sources we deem reliable. It is provided without any representation, warranty, or guarantee, expressed or implied as to its accuracy. Prospective Buyer or Tenant should conduct an independent investigation and verification of all matters deemed to be material, including, but not limited to, statements of income and expenses. Consult your attorney, accountant, or other professional advisor.



FOR LEASE

# Pacific Financial Center

800 WEST SIXTH STREET, LOS ANGELES, CA 90017



## Highlights

**NEWLY RENOVATED** lobby & common areas

**ON-SITE** parking with car wash

**CLASS A** premier office building

**NEW** elevator cabs & street-level elevator

**ON-SITE** property management & ownership

**3-MINUTE** walk to Metro rail station

## SUITES AVAILABLE

Suite	RSF	Description
320	2,907	Reception, 5 offices, conference room, workstations, workroom/kitchen
700	7,115	Reception, conference room, 9 offices, workstations, IT room, storage & kitchen
1020	1,160	Reception, 3 offices, open area
1400	8,839	Reception, conference room, 11 perimeter offices, open areas with workstations, kitchen/workroom & IT room (divisible)
1600	14,342	Fully furnished plug & play space, with reception, 3 conference rooms, 14 perimeter offices, 5 interior offices, kitchen & workstations

\*\$2/SF BROKER BONUS FOR ALL LEASES WITH A TERM OF 5 YEARS OR GREATER

**JOHN ANTHONY, SIOR**

213.225.7218

[john.anthony@kidder.com](mailto:john.anthony@kidder.com)

LIC N° 01226464

**CHRISTOPHER STECK**

213.225.7231

[christopher.steck@kidder.com](mailto:christopher.steck@kidder.com)

LIC N° 01841338

**CHRISTOPHER GIORDANO**

213.225.7219

[christopher.giordano@kidder.com](mailto:christopher.giordano@kidder.com)

LIC N° 01928706

**PHILLIP TAGGART**

213.225.7237

[phil.taggart@kidder.com](mailto:phil.taggart@kidder.com)

LIC N° 02149291

**KIDDER.COM**

This information supplied herein is from sources we deem reliable. It is provided without any representation, warranty, or guarantee, expressed or implied as to its accuracy. Prospective Buyer or Tenant should conduct an independent investigation and verification of all matters deemed to be material, including, but not limited to, statements of income and expenses. Consult your attorney, accountant, or other professional advisor.

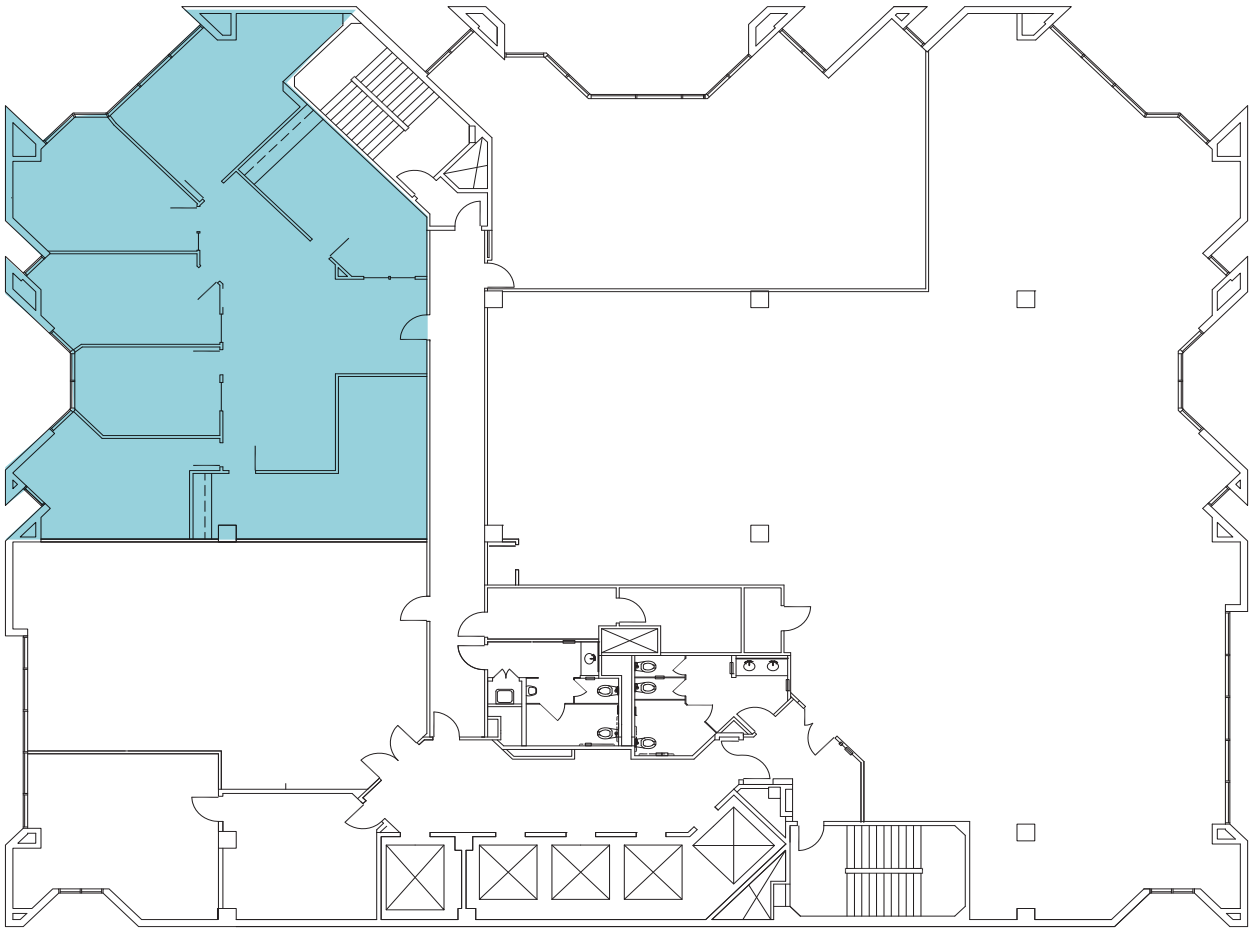


**FOR LEASE**

# Pacific Financial Center

800 WEST SIXTH STREET, LOS ANGELES, CA 90017

## Suite 320 - 2,907 SF



**JOHN ANTHONY, SIOR**

213.225.7218

[john.anthony@kidder.com](mailto:john.anthony@kidder.com)

LIC N° 01226464

**CHRISTOPHER STECK**

213.225.7231

[christopher.steck@kidder.com](mailto:christopher.steck@kidder.com)

LIC N° 01841338

**CHRISTOPHER GIORDANO**

213.225.7219

[christopher.giordano@kidder.com](mailto:christopher.giordano@kidder.com)

LIC N° 01928706

**PHILLIP TAGGART**

213.225.7237

[phil.taggart@kidder.com](mailto:phil.taggart@kidder.com)

LIC N° 02149291

**KIDDER.COM**

This information supplied herein is from sources we deem reliable. It is provided without any representation, warranty, or guarantee, expressed or implied as to its accuracy. Prospective Buyer or Tenant should conduct an independent investigation and verification of all matters deemed to be material, including, but not limited to, statements of income and expenses. Consult your attorney, accountant, or other professional advisor.

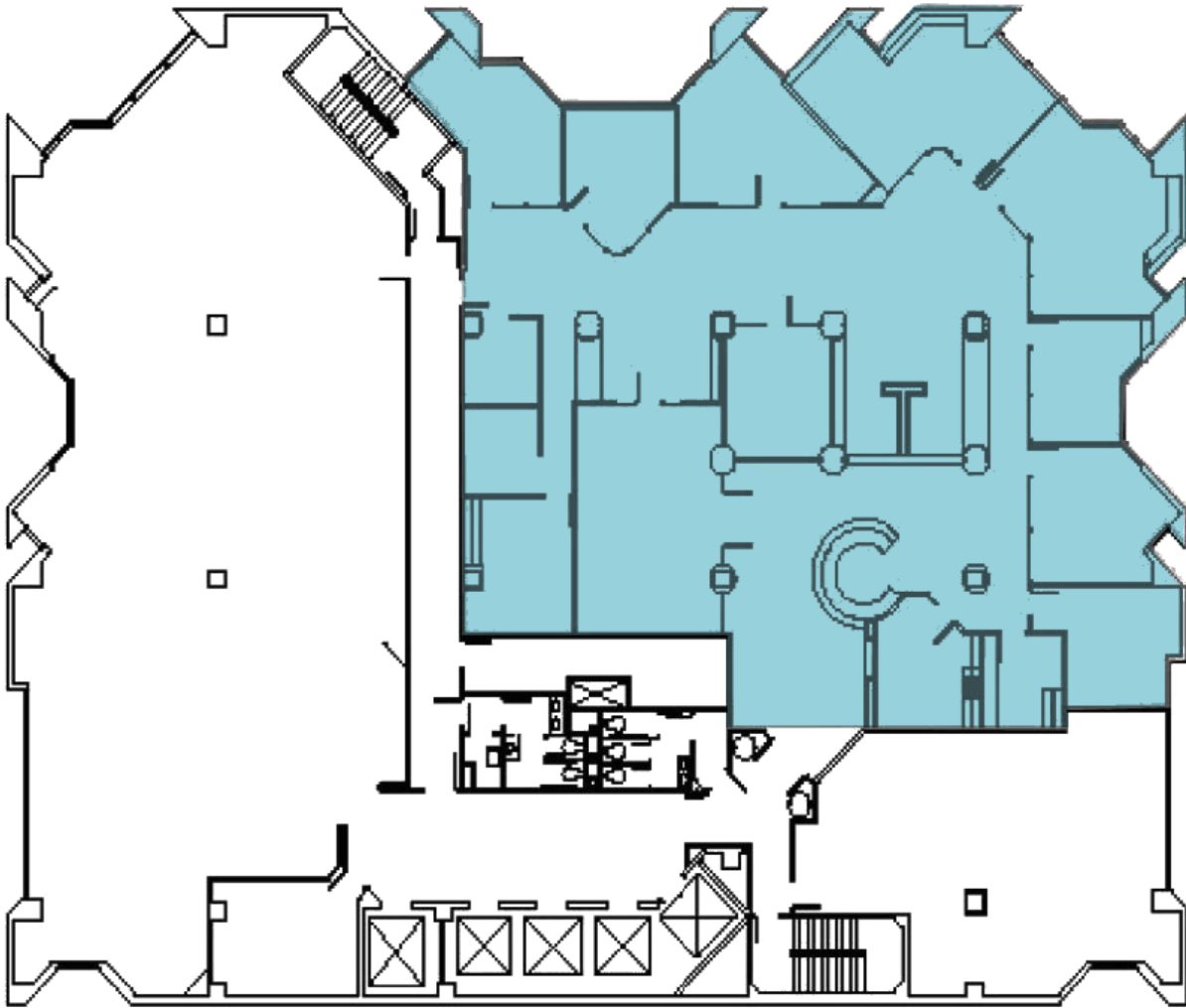


**FOR LEASE**

# Pacific Financial Center

800 WEST SIXTH STREET, LOS ANGELES, CA 90017

## Suite 700 - 7,115 SF



**JOHN ANTHONY, SIOR**

213.225.7218

[john.anthony@kidder.com](mailto:john.anthony@kidder.com)

LIC N° 01226464

**CHRISTOPHER STECK**

213.225.7231

[christopher.steck@kidder.com](mailto:christopher.steck@kidder.com)

LIC N° 01841338

**CHRISTOPHER GIORDANO**

213.225.7219

[christopher.giordano@kidder.com](mailto:christopher.giordano@kidder.com)

LIC N° 01928706

**PHILLIP TAGGART**

213.225.7237

[phil.taggart@kidder.com](mailto:phil.taggart@kidder.com)

LIC N° 02149291

**KIDDER.COM**

This information supplied herein is from sources we deem reliable. It is provided without any representation, warranty, or guarantee, expressed or implied as to its accuracy. Prospective Buyer or Tenant should conduct an independent investigation and verification of all matters deemed to be material, including, but not limited to, statements of income and expenses. Consult your attorney, accountant, or other professional advisor.

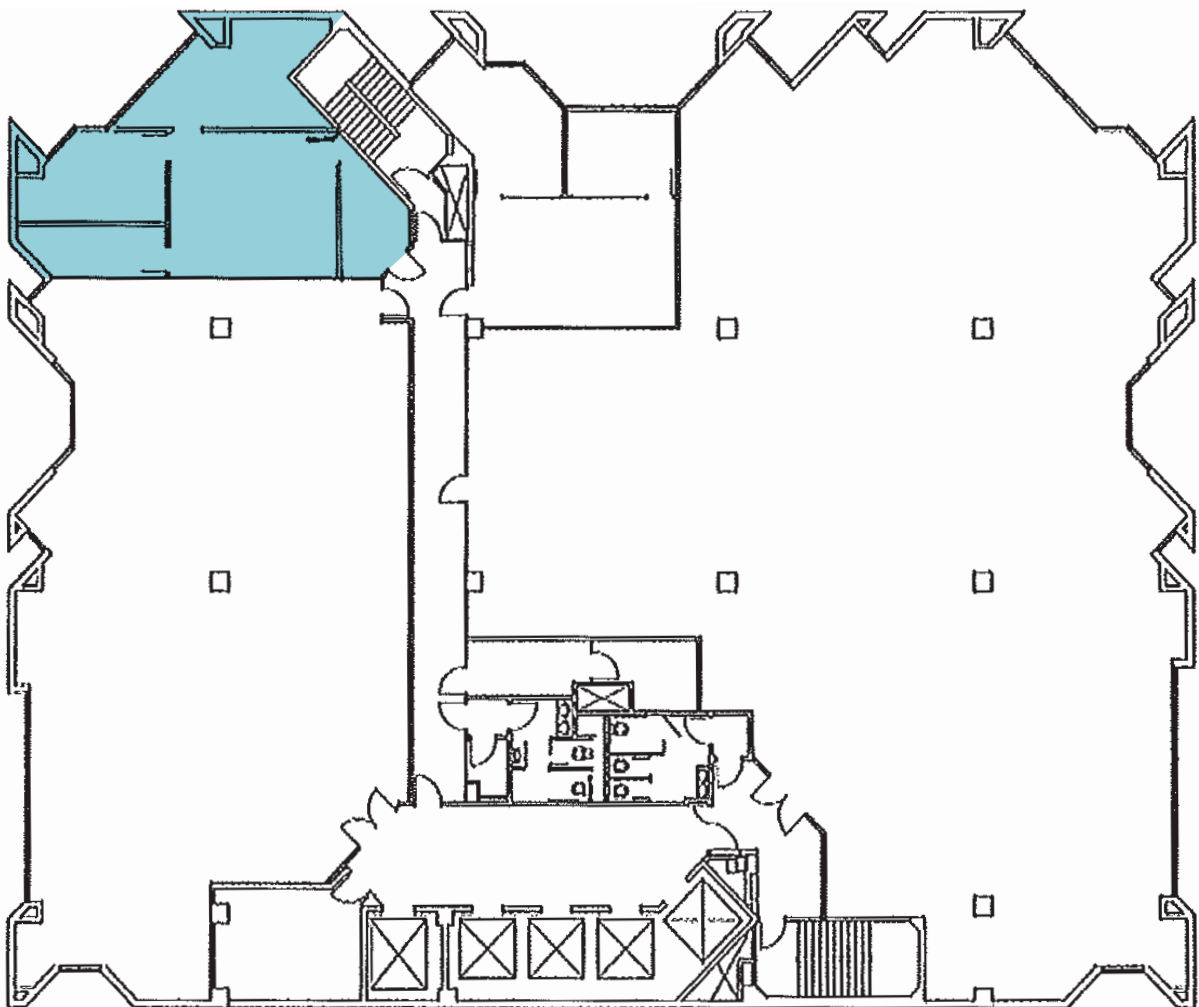


**FOR LEASE**

# Pacific Financial Center

800 WEST SIXTH STREET, LOS ANGELES, CA 90017

Suite 1020 - 1,160 SF



**JOHN ANTHONY, SIOR**

213.225.7218

[john.anthony@kidder.com](mailto:john.anthony@kidder.com)

LIC N° 01226464

**CHRISTOPHER STECK**

213.225.7231

[christopher.steck@kidder.com](mailto:christopher.steck@kidder.com)

LIC N° 01841338

**CHRISTOPHER GIORDANO**

213.225.7219

[christopher.giordano@kidder.com](mailto:christopher.giordano@kidder.com)

LIC N° 01928706

**PHILLIP TAGGART**

213.225.7237

[phil.taggart@kidder.com](mailto:phil.taggart@kidder.com)

LIC N° 02149291

**KIDDER.COM**

This information supplied herein is from sources we deem reliable. It is provided without any representation, warranty, or guarantee, expressed or implied as to its accuracy. Prospective Buyer or Tenant should conduct an independent investigation and verification of all matters deemed to be material, including, but not limited to, statements of income and expenses. Consult your attorney, accountant, or other professional advisor.

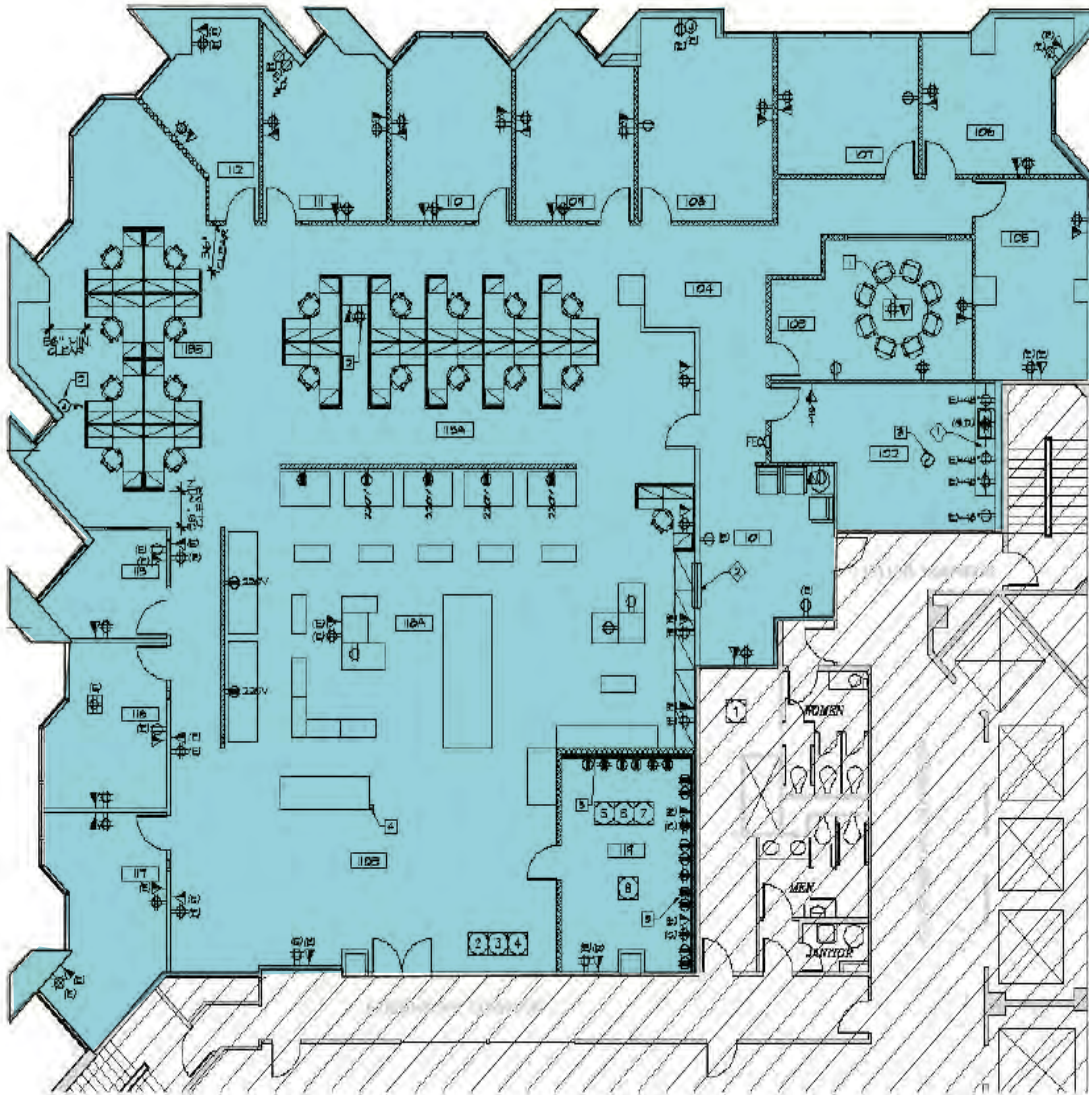


**FOR LEASE**

# Pacific Financial Center

800 WEST SIXTH STREET, LOS ANGELES, CA 90017

## Suite 1400 - 8,839 SF



**JOHN ANTHONY, SIOR**

213.225.7218

[john.anthony@kidder.com](mailto:john.anthony@kidder.com)

LIC N° 01226464

**CHRISTOPHER STECK**

213.225.7231

[christopher.steck@kidder.com](mailto:christopher.steck@kidder.com)

LIC N° 01841338

**CHRISTOPHER GIORDANO**

213.225.7219

[christopher.giordano@kidder.com](mailto:christopher.giordano@kidder.com)

LIC N° 01928706

**PHILLIP TAGGART**

213.225.7237

[phil.taggart@kidder.com](mailto:phil.taggart@kidder.com)

LIC N° 02149291

**KIDDER.COM**

This information supplied herein is from sources we deem reliable. It is provided without any representation, warranty, or guarantee, expressed or implied as to its accuracy. Prospective Buyer or Tenant should conduct an independent investigation and verification of all matters deemed to be material, including, but not limited to, statements of income and expenses. Consult your attorney, accountant, or other professional advisor.



**FOR LEASE**

# Pacific Financial Center

800 WEST SIXTH STREET, LOS ANGELES, CA 90017

## Suite 1600 - 14,342 SF



**JOHN ANTHONY, SIOR**

213.225.7218

[john.anthony@kiddler.com](mailto:john.anthony@kiddler.com)

LIC N° 01226464

**CHRISTOPHER STECK**

213.225.7231

[christopher.steck@kiddler.com](mailto:christopher.steck@kiddler.com)

LIC N° 01841338

**CHRISTOPHER GIORDANO**

213.225.7219

[christopher.giordano@kiddler.com](mailto:christopher.giordano@kiddler.com)

LIC N° 01928706

**PHILLIP TAGGART**

213.225.7237

[phil.taggart@kiddler.com](mailto:phil.taggart@kiddler.com)

LIC N° 02149291

**KIDDER.COM**

This information supplied herein is from sources we deem reliable. It is provided without any representation, warranty, or guarantee, expressed or implied as to its accuracy. Prospective Buyer or Tenant should conduct an independent investigation and verification of all matters deemed to be material, including, but not limited to, statements of income and expenses. Consult your attorney, accountant, or other professional advisor.



FOR LEASE

# Pacific Financial Center

800 WEST SIXTH STREET, LOS ANGELES, CA 90017



## Location Highlights

**THE PROPERTY** is centrally located on the southwest corner of W 6th St and Flower St

**7TH STREET** Metro Center and the Standard Hotel are adjacent

**THE FINANCIAL DISTRICT** features come of the most diverse retail, restaurants, and entertainment options

**800 W 6TH ST** is a perfect destination for anyone that wants to live, work, and play downtown

**JOHN ANTHONY, Sior**

213.225.7218

[john.anthony@kidder.com](mailto:john.anthony@kidder.com)

LIC N° 01226464

**CHRISTOPHER STECK**

213.225.7231

[christopher.steck@kidder.com](mailto:christopher.steck@kidder.com)

LIC N° 01841338

**CHRISTOPHER GIORDANO**

213.225.7219

[christopher.giordano@kidder.com](mailto:christopher.giordano@kidder.com)

LIC N° 01928706

**PHILLIP TAGGART**

213.225.7237

[phil.taggart@kidder.com](mailto:phil.taggart@kidder.com)

LIC N° 02149291

**KIDDER.COM**

This information supplied herein is from sources we deem reliable. It is provided without any representation, warranty, or guarantee, expressed or implied as to its accuracy. Prospective Buyer or Tenant should conduct an independent investigation and verification of all matters deemed to be material, including, but not limited to, statements of income and expenses. Consult your attorney, accountant, or other professional advisor.

