



FOR LEASE

Prime Little Tokyo Office/Retail Space

340 E 2ND ST, LOS ANGELES, CA 90012



44,351 SF Class A Office Building

JOHN C. ANTHONY, SIOR
213.225.7218
john.anthony@kidder.com
LIC N° 01226464

CHRISTOPHER STECK
213.225.7231
christopher.steck@kidder.com
LIC N° 01841338

CHRISTOPHER GIORDANO
213.225.7219
christopher.giordano@kidder.com
LIC N° 01928706

PHILLIP TAGGART
213.225.7237
phil.taggart@kidder.com
LIC N° 02149291



This information supplied herein is from sources we deem reliable. It is provided without any representation, warranty, or guarantee, expressed or implied as to its accuracy. Prospective Buyer or Tenant should conduct an independent investigation and verification of all matters deemed to be material, including, but not limited to, statements of income and expenses. Consult your attorney, accountant, or other professional advisor.

KIDDER.COM

FOR LEASE

Prime Little Tokyo Space

340 E 2ND ST, LOS ANGELES, CA 90012

AVAILABILITY

Floor	Suite	Use	Available SF	Rent	Term
1st	G-336	Retail	2,493	Negotiable	Negotiable
3rd	*301	Office	659	\$33/SF	Negotiable
3rd	*S-303	Office	641	\$33/SF	Negotiable
4th	402	Office	2,369	\$33/SF	Negotiable
4th	408	Office	1,452	\$33/SF	Negotiable

*SUITES ARE CONTIGUOUS

JOHN C. ANTHONY, SIOR

213.225.7218

john.anthony@kidder.com

LIC N° 01226464

CHRISTOPHER STECK

213.225.7231

christopher.steck@kidder.com

LIC N° 01841338

CHRISTOPHER GIORDANO

213.225.7219

christopher.giordano@kidder.com

LIC N° 01928706

PHILLIP TAGGART

213.225.7237

phil.taggart@kidder.com

LIC N° 02149291

KIDDER.COM



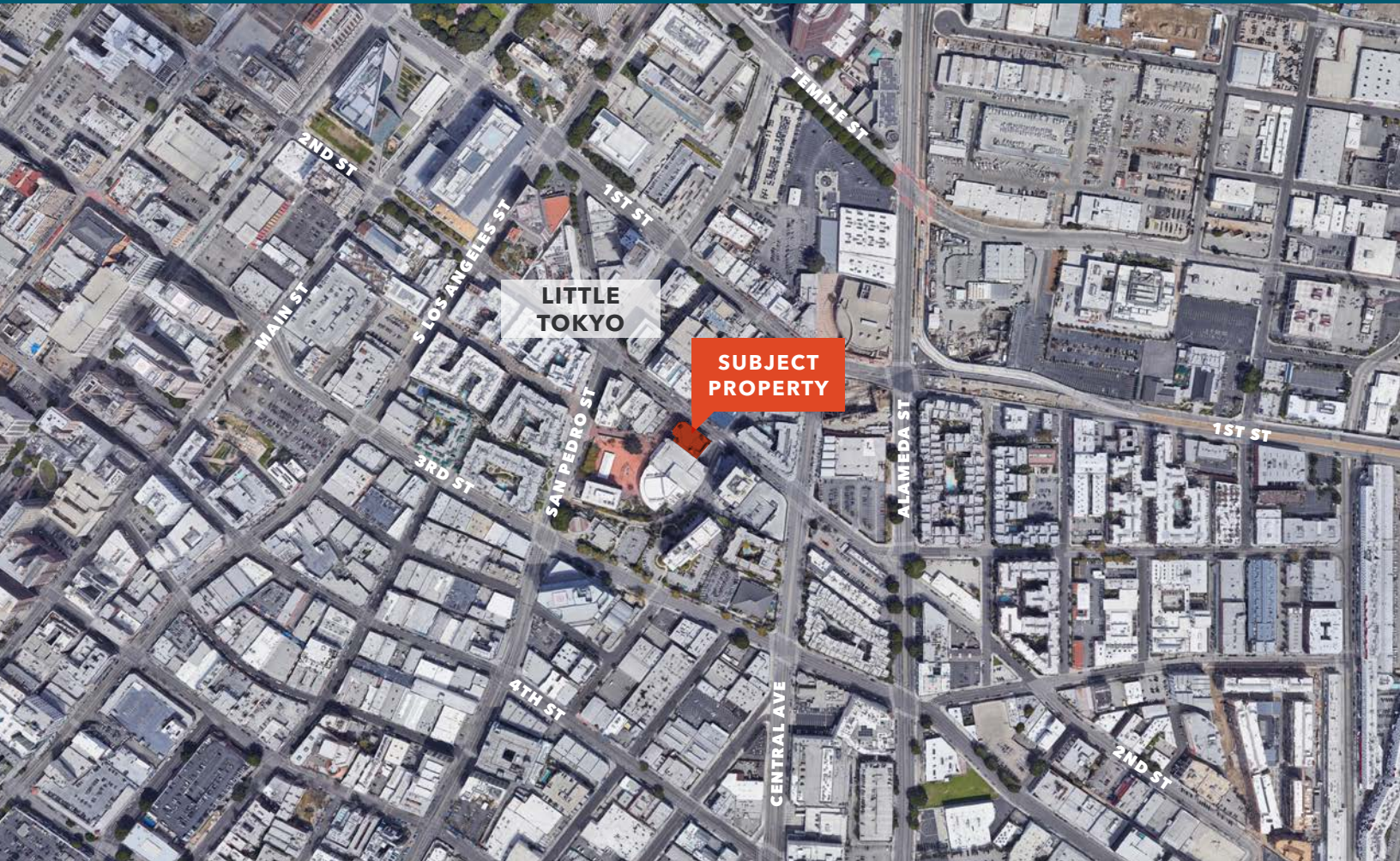
This information supplied herein is from sources we deem reliable. It is provided without any representation, warranty, or guarantee, expressed or implied as to its accuracy. Prospective Buyer or Tenant should conduct an independent investigation and verification of all matters deemed to be material, including, but not limited to, statements of income and expenses. Consult your attorney, accountant, or other professional advisor.



FOR LEASE

Prime Little Tokyo Space

340 E 2ND ST, LOS ANGELES, CA 90012



Property Highlights

SOUGHT after Little Tokyo location

ACCESSIBLE to public transit

ADJACENT parking

SPEC SUITES available for immediate occupancy

JOHN C. ANTHONY, SIOR

213.225.7218

john.anthony@kidder.com

LIC N° 01226464

CHRISTOPHER STECK

213.225.7231

christopher.steck@kidder.com

LIC N° 01841338

CHRISTOPHER GIORDANO

213.225.7219

christopher.giordano@kidder.com

LIC N° 01928706

PHILLIP TAGGART

213.225.7237

phil.taggart@kidder.com

LIC N° 02149291

KIDDER.COM

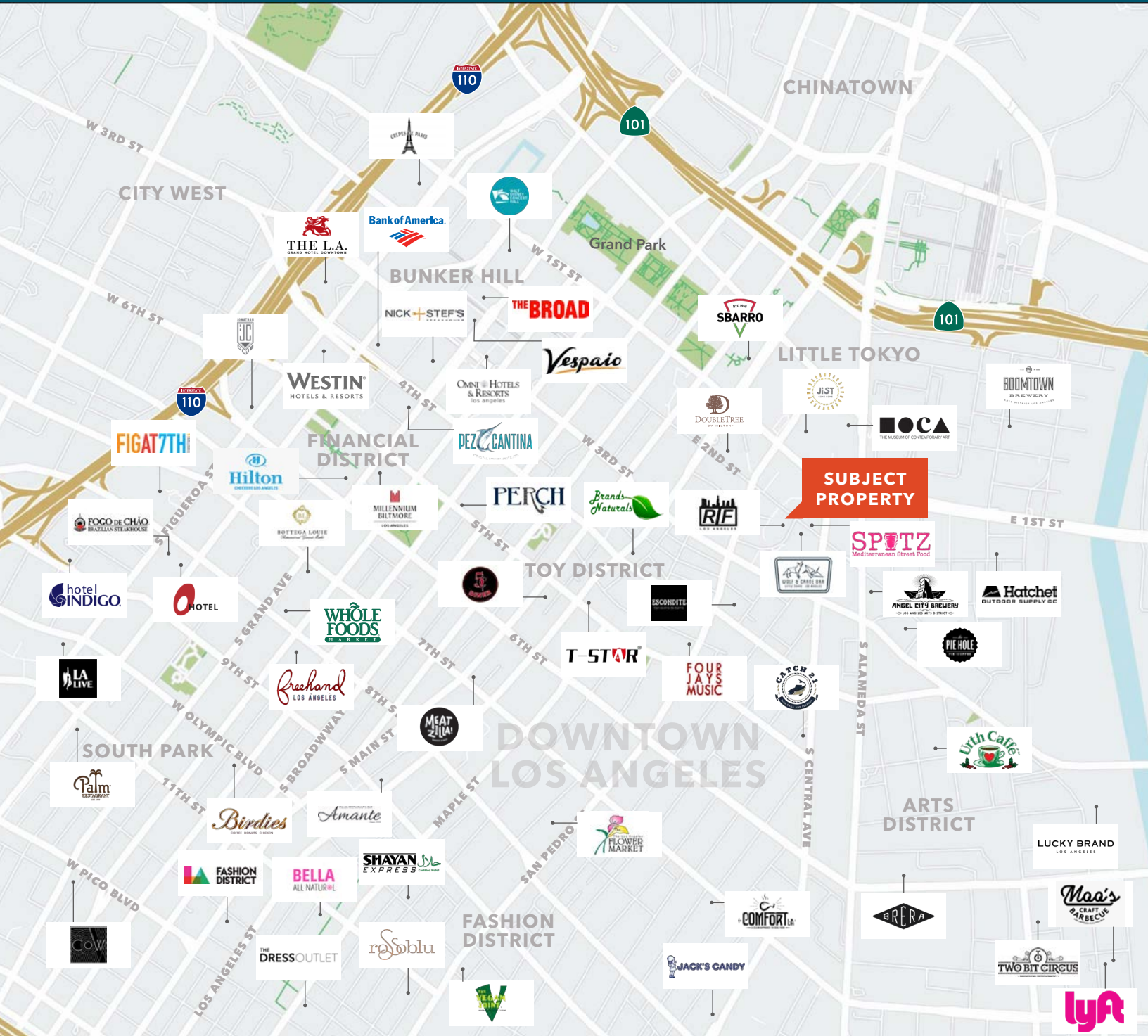
This information supplied herein is from sources we deem reliable. It is provided without any representation, warranty, or guarantee, expressed or implied as to its accuracy. Prospective Buyer or Tenant should conduct an independent investigation and verification of all matters deemed to be material, including, but not limited to, statements of income and expenses. Consult your attorney, accountant, or other professional advisor.



FOR LEASE

Prime Little Tokyo Space

340 E 2ND ST, LOS ANGELES, CA 90012



JOHN C. ANTHONY, SIOR
213.225.7218
john.anthony@kidder.com
LIC N° 01226464

CHRISTOPHER STECK
213.225.7231
christopher.steck@kidder.com
LIC N° 01841338

CHRISTOPHER GIORDANO
213.225.7219
christopher.giordano@kidder.com
LIC N° 01928706

PHILLIP TAGGART
213.225.7237
phil.taggart@kidder.com
LIC N° 02149291

KIDDER.COM

This information supplied herein is from sources we deem reliable. It is provided without any representation, warranty, or guarantee, expressed or implied as to its accuracy. Prospective Buyer or Tenant should conduct an independent investigation and verification of all matters deemed to be material, including, but not limited to, statements of income and expenses. Consult your attorney, accountant, or other professional advisor.

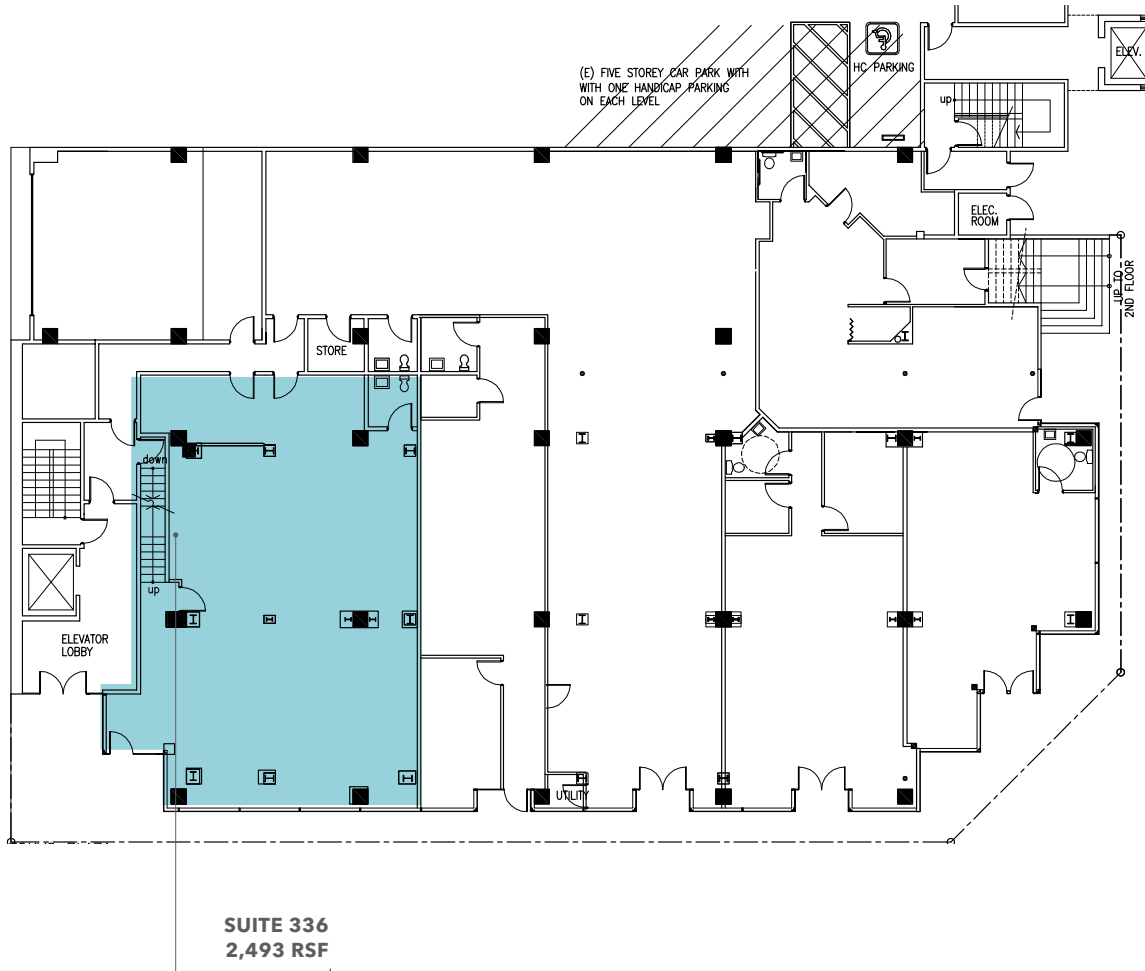


FOR LEASE

Prime Little Tokyo Space

340 E 2ND ST, LOS ANGELES, CA 90012

1st Floor - Suite 336



JOHN C. ANTHONY, SIOR

213.225.7218

john.anthony@kidder.com

LIC N° 01226464

CHRISTOPHER STECK

213.225.7231

christopher.steck@kidder.com

LIC N° 01841338

CHRISTOPHER GIORDANO

213.225.7219

christopher.giordano@kidder.com

LIC N° 01928706

PHILLIP TAGGART

213.225.7237

phil.taggart@kidder.com

LIC N° 02149291

KIDDER.COM

This information supplied herein is from sources we deem reliable. It is provided without any representation, warranty, or guarantee, expressed or implied as to its accuracy. Prospective Buyer or Tenant should conduct an independent investigation and verification of all matters deemed to be material, including, but not limited to, statements of income and expenses. Consult your attorney, accountant, or other professional advisor.

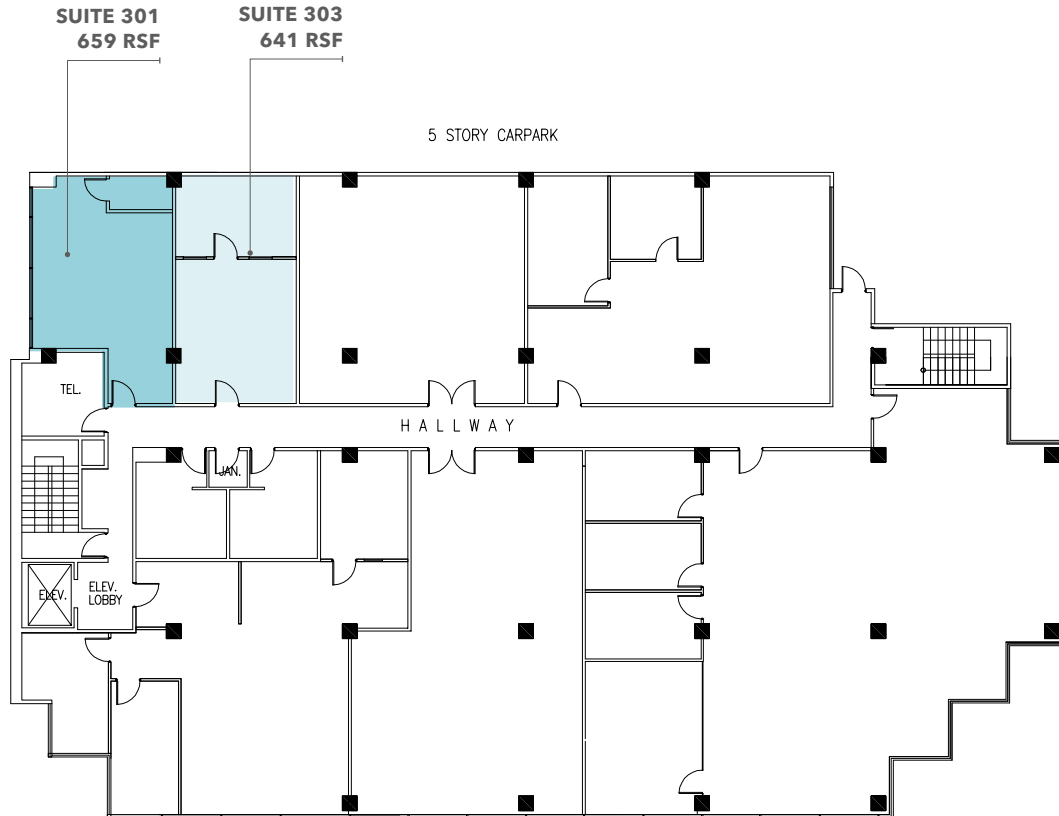


FOR LEASE

Prime Little Tokyo Space

340 E 2ND ST, LOS ANGELES, CA 90012

3rd Floor - Suites 301 & 303



JOHN C. ANTHONY, SIOR

213.225.7218

john.anthony@kidder.com

LIC N° 01226464

CHRISTOPHER STECK

213.225.7231

christopher.steck@kidder.com

LIC N° 01841338

CHRISTOPHER GIORDANO

213.225.7219

christopher.giordano@kidder.com

LIC N° 01928706

PHILLIP TAGGART

213.225.7237

phil.taggart@kidder.com

LIC N° 02149291

KIDDER.COM

This information supplied herein is from sources we deem reliable. It is provided without any representation, warranty, or guarantee, expressed or implied as to its accuracy. Prospective Buyer or Tenant should conduct an independent investigation and verification of all matters deemed to be material, including, but not limited to, statements of income and expenses. Consult your attorney, accountant, or other professional advisor.

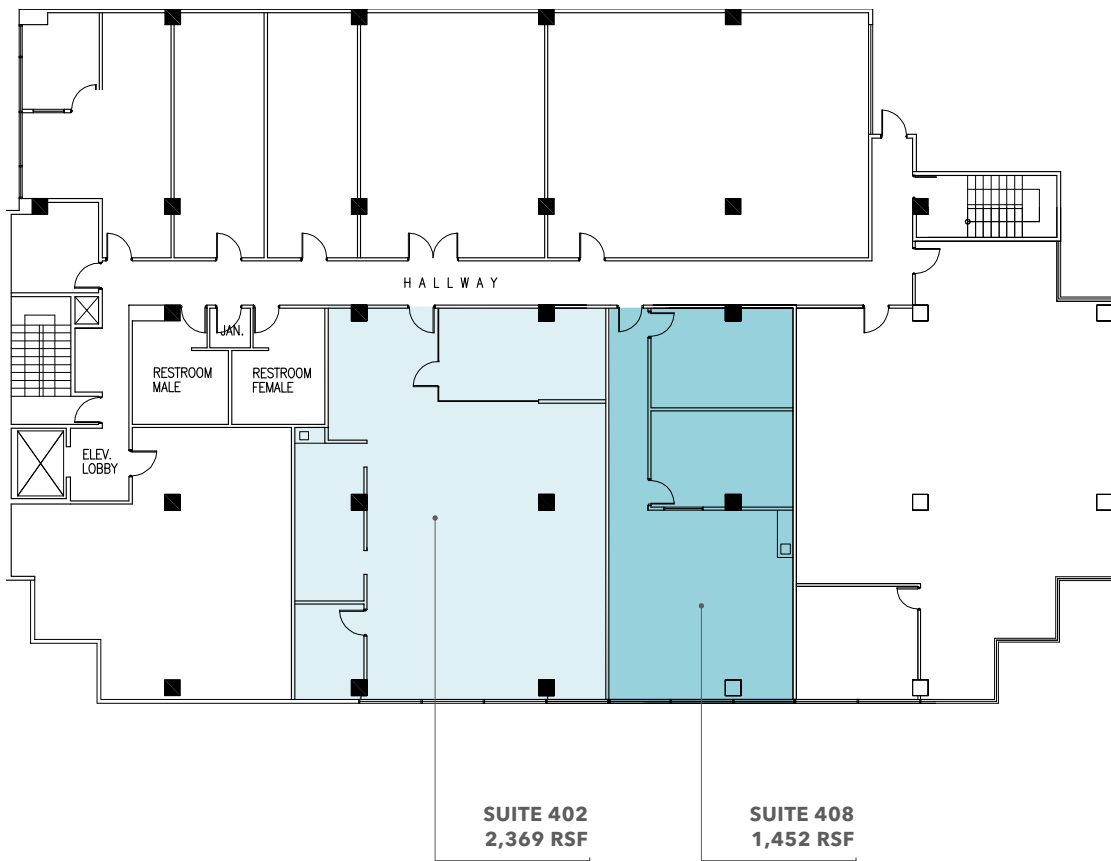


FOR LEASE

Prime Little Tokyo Space

340 E 2ND ST, LOS ANGELES, CA 90012

4th Floor - Suites 402 & 408



JOHN C. ANTHONY, SIOR

213.225.7218

john.anthony@kidder.com

LIC N° 01226464

CHRISTOPHER STECK

213.225.7231

christopher.steck@kidder.com

LIC N° 01841338

CHRISTOPHER GIORDANO

213.225.7219

christopher.giordano@kidder.com

LIC N° 01928706

PHILLIP TAGGART

213.225.7237

phil.taggart@kidder.com

LIC N° 02149291

KIDDER.COM

This information supplied herein is from sources we deem reliable. It is provided without any representation, warranty, or guarantee, expressed or implied as to its accuracy. Prospective Buyer or Tenant should conduct an independent investigation and verification of all matters deemed to be material, including, but not limited to, statements of income and expenses. Consult your attorney, accountant, or other professional advisor.



FOR LEASE

Prime Little Tokyo Space

340 E 2ND ST, LOS ANGELES, CA 90012



JOHN C. ANTHONY, SIOR

213.225.7218

john.anthony@kidder.com

LIC N° 01226464

CHRISTOPHER STECK

213.225.7231

christopher.steck@kidder.com

LIC N° 01841338

CHRISTOPHER GIORDANO

213.225.7219

christopher.giordano@kidder.com

LIC N° 01928706

PHILLIP TAGGART

213.225.7237

phil.taggart@kidder.com

LIC N° 02149291

KIDDER.COM

This information supplied herein is from sources we deem reliable. It is provided without any representation, warranty, or guarantee, expressed or implied as to its accuracy. Prospective Buyer or Tenant should conduct an independent investigation and verification of all matters deemed to be material, including, but not limited to, statements of income and expenses. Consult your attorney, accountant, or other professional advisor.

