

UPPER SANDUSKY RETAIL OUTLOTS

1855 Wyandot Avenue, Upper Sandusky, OH 43351

3 Separate 1 Acre+/- Outlots FOR SALE



Property Details:

- Pad sites located in front of Walmart Supercenter built in 2005
- In-place access agreements with Walmart
- Full-access ingress and egress at signalized intersection
- Each outlot can be developed with a single tenant 8,000 sf building ideal for office, retail, and/or restaurant uses
- Directly off US Routes 23 and 30, major thoroughfares through northern Ohio
- Nearby retailers include:



Demographics:

2019 Estimates	3 Mile	5 Mile	10 Mile	15 Mile
Population	5,654	8,429	16,075	43,961
Households	2,555	3,739	6,849	18,786
Average Household Income	\$59,862	\$60,863	\$68,095	\$65,398
Total Number of Employees	3,387	7,311	8,776	18,354

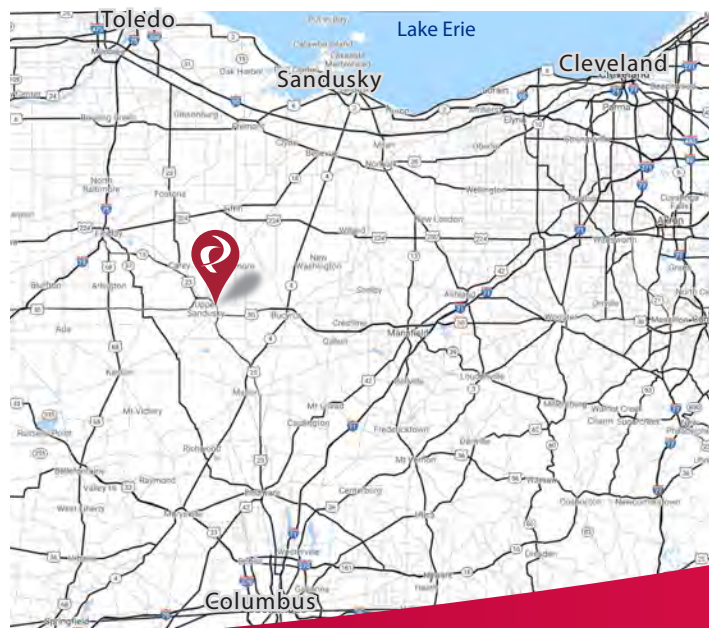
Traffic Counts:

E Wyandot Avenue ADT 9,483 ADT (ODOT 2019)

Contact:

Zachary Schunn

513.489.3343 x5
zschunn@edgegp.com



LET US GIVE YOU AN EDGE



128 East Second Street | Suite B | Covington, KY 41011 | 513.489.3343 | edgegp.com

Information and any imagery is proprietary to Edge Real Estate Group and confidential. Information contained herein has been obtained from sources deemed reliable, but is not guaranteed and is subject to change.



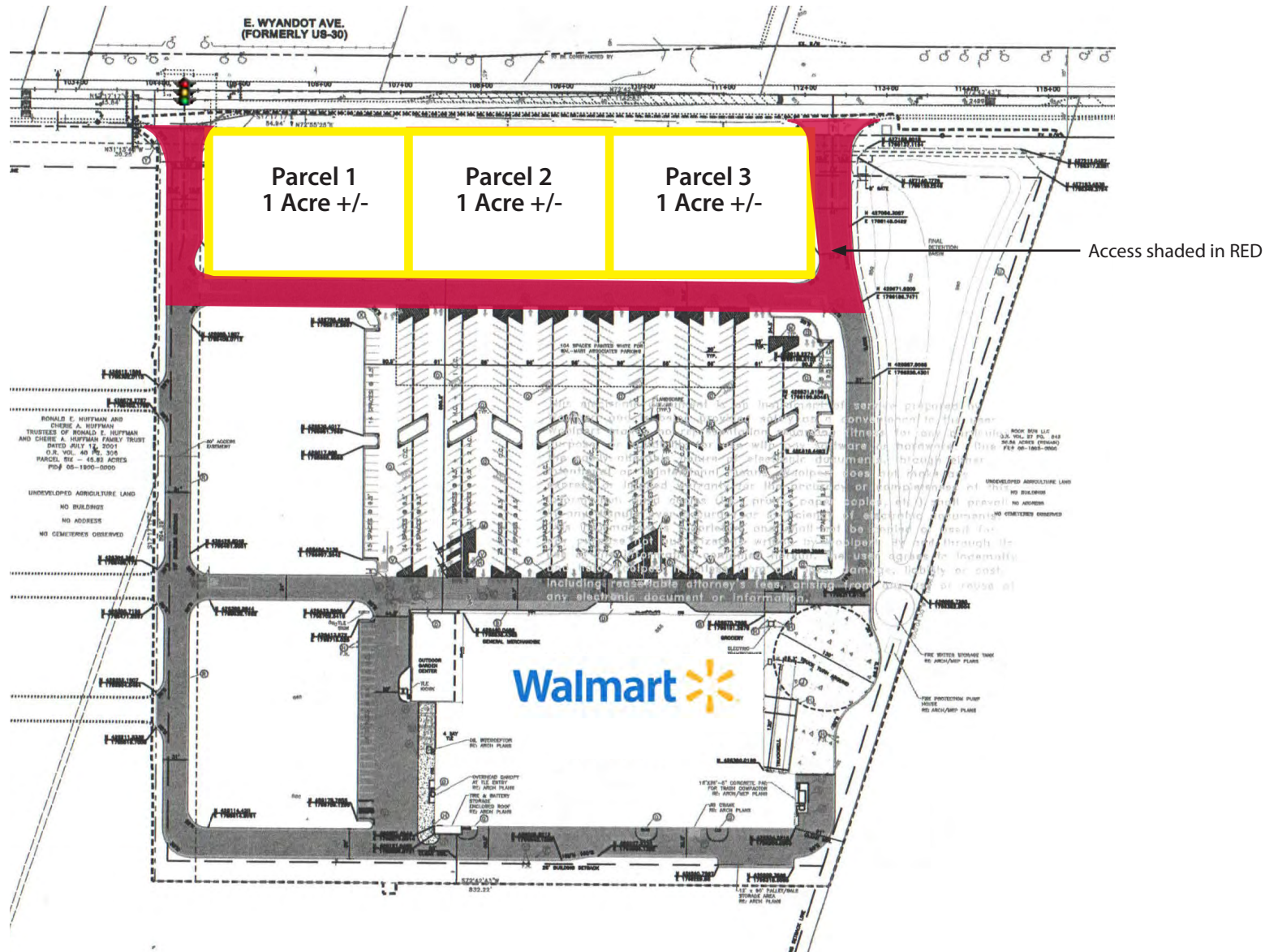
UPPER SANDUSKY RETAIL OUTLOTS

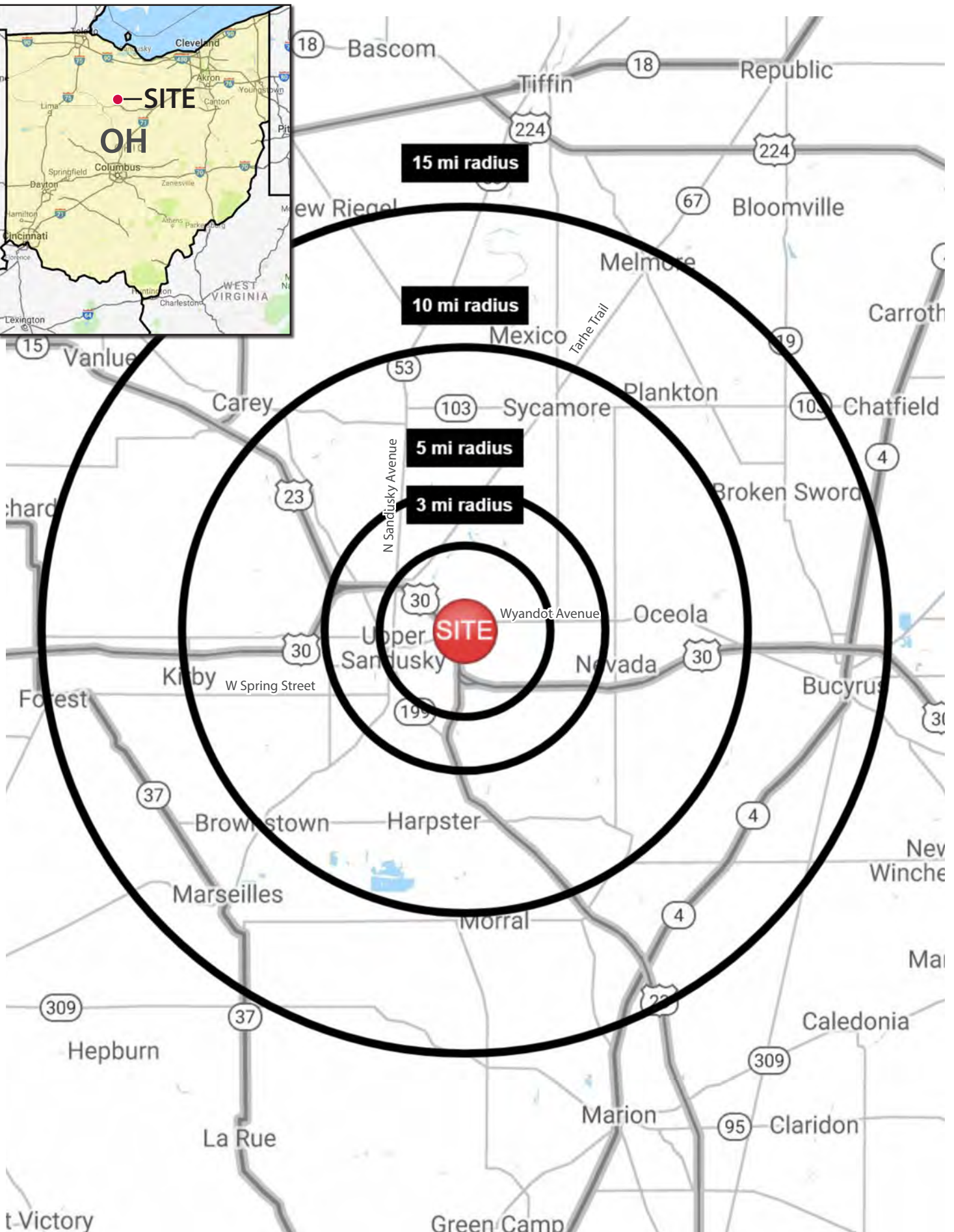
1855 Wyandot Avenue, Upper Sandusky, OH 43351



UPPER SANDUSKY RETAIL OUTLOTS

1855 Wyandot Avenue, Upper Sandusky, OH 43351





SUMMARY PROFILE

2000-2010 Census, 2019 Estimates with 2024 Projections

Calculated using Weighted Block Centroid from Block Groups



Lat/Lon: 40.8346/-83.232

RS1

1855 E Wyandot Ave		3 mi radius	5 mi radius	10 mi radius	15 mi radius
Upper Sandusky, OH 43351					
POPULATION	2019 Estimated Population	5,654	8,429	16,075	43,961
	2024 Projected Population	5,537	8,247	15,664	42,876
	2010 Census Population	5,809	8,644	16,646	45,872
	2000 Census Population	5,821	8,627	16,557	48,220
	Projected Annual Growth 2019 to 2024	-0.4%	-0.4%	-0.5%	-0.5%
	Historical Annual Growth 2000 to 2019	-0.2%	-0.1%	-0.2%	-0.5%
	2019 Median Age	42.3	42.5	42.4	41.9
HOUSEHOLDS	2019 Estimated Households	2,555	3,739	6,849	18,786
	2024 Projected Households	2,580	3,771	6,862	18,587
	2010 Census Households	2,491	3,641	6,727	18,536
	2000 Census Households	2,417	3,528	6,484	18,499
	Projected Annual Growth 2019 to 2024	0.2%	0.2%	-	-0.2%
	Historical Annual Growth 2000 to 2019	0.3%	0.3%	0.3%	-
RACE AND ETHNICITY	2019 Estimated White	93.4%	93.7%	95.6%	95.7%
	2019 Estimated Black or African American	0.9%	0.9%	0.6%	0.8%
	2019 Estimated Asian or Pacific Islander	1.0%	0.9%	0.6%	0.9%
	2019 Estimated American Indian or Native Alaskan	0.2%	0.2%	0.2%	0.2%
	2019 Estimated Other Races	4.6%	4.4%	3.0%	2.4%
	2019 Estimated Hispanic	5.1%	4.8%	3.3%	2.6%
INCOME	2019 Estimated Average Household Income	\$59,862	\$60,863	\$68,095	\$65,398
	2019 Estimated Median Household Income	\$51,770	\$52,401	\$57,416	\$54,506
	2019 Estimated Per Capita Income	\$27,191	\$27,149	\$29,118	\$28,073
EDUCATION (AGE 25+)	2019 Estimated Elementary (Grade Level 0 to 8)	2.4%	2.2%	2.6%	2.5%
	2019 Estimated Some High School (Grade Level 9 to 11)	6.9%	6.6%	6.4%	6.7%
	2019 Estimated High School Graduate	44.4%	45.9%	45.1%	46.0%
	2019 Estimated Some College	16.6%	16.7%	17.4%	19.3%
	2019 Estimated Associates Degree Only	11.5%	11.1%	11.2%	10.5%
	2019 Estimated Bachelors Degree Only	13.0%	12.4%	12.3%	10.2%
	2019 Estimated Graduate Degree	5.2%	5.2%	4.9%	4.8%
BUSINESS	2019 Estimated Total Businesses	380	518	673	1,602
	2019 Estimated Total Employees	3,387	7,311	8,776	18,354
	2019 Estimated Employee Population per Business	8.9	14.1	13.0	11.5
	2019 Estimated Residential Population per Business	14.9	16.3	23.9	27.4

This report was produced using data from private and government sources deemed to be reliable. The information herein is provided without representation or warranty.

UPPER SANDUSKY RETAIL OUTLOTS

1855 Wyandot Avenue, Upper Sandusky, OH 43351



Contact:
Zachary Schunn

513.489.3343 x5
zschunn@edgegp.com

128 East Second Street
Suite B
Covington, KY 41011
513.489.3343
edgegp.com

LET US GIVE YOU AN EDGE



128 East Second Street | Suite B | Covington, KY 41011 | 513.489.3343 | edgegp.com

Information and any imagery is proprietary to Edge Real Estate Group and confidential. Information contained herein has been obtained from sources deemed reliable, but is not guaranteed and is subject to change.