

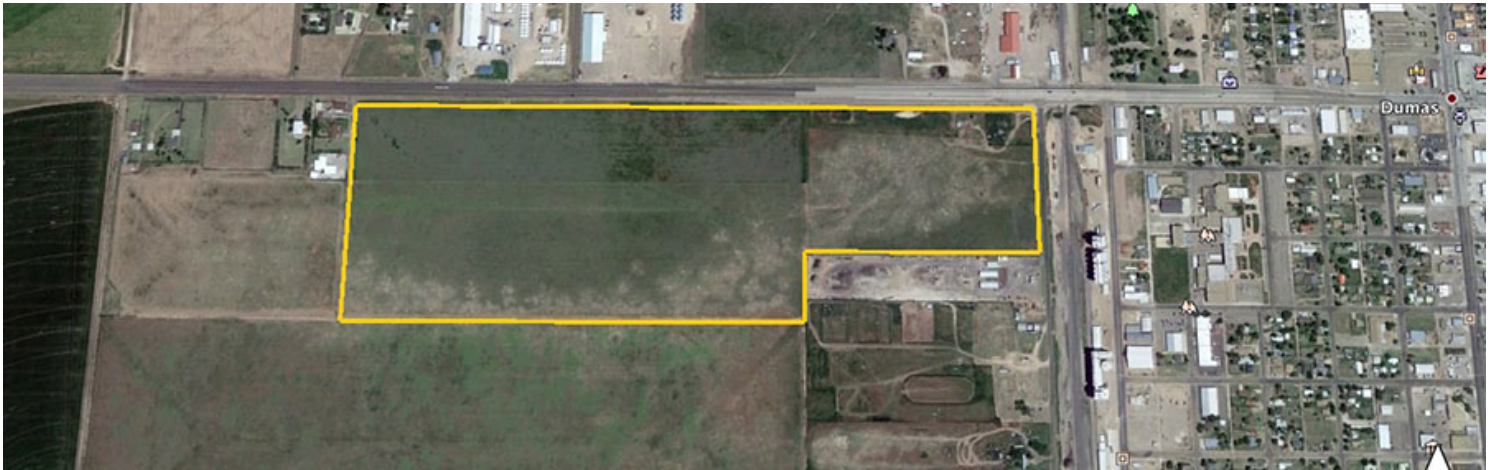


SHAWN GILLISPIE, BROKER: 806-922-5532 6107 S.
 COULTER, STE. 300
 AMARILLO, TEXAS 79119
 PH: 806-553-6165

FOR SALE

DUMAS COMMERCIAL 100

\$16,000/acre or \$1,600,000



PROPERTY DESCRIPTION

LOCATION: Property sits immediately outside the west city limits of Dumas on the south side of Highway 87 to Dalhart. Highway 87 is a high volume 4 lane highway. Immediately to the east of property on highway 87 is a new overpass.

PROPERTY TYPE: Commercial/Industrial, multi family, residential

ACRES: 100

UTILITIES: Access to City water, sewage, electrical. City water and sewage runs along property boundary. Three phase electricity runs along highway 87.

SURROUNDING AREA: Property is located within 1 mile of the Moore County airport, 400 yards from Dumas High School, close to Monsanto Seed Co., Jack Oldham Oil Co, Dumas Coop, CVS Pharmacy, Pak a Sak convenience store, Wendy's, Burger King.

FRONTAGE: This property has ¾ mile of highway frontage.

POPULATION: Dumas has a current population of 14,726 residents. Moore Co has a population of 22,000 residents.

INDUSTRY: See next page

INDUSTRY:

NAME	PRODUCT OR SERVICE	FULL TIME EMPLOYEES
JBS packing plant-	Beef Slaughtering	3,232
Valero Energy Corp>	Chemicals/ Refinery	468
Faria Dairy	Dairy	450
Continental Carbon	Carbon Black	80
Pioneer Natural Resources	Gas	73
Dynamic Industries	Welding/Maintenance	65
Venable's Welding/ Roustabout	Welding	64
Cactus Feedyard	Cattle Feeding	58
Mission Petroleum	Crude Oil	40
Energy Transfer	Gas & Oil	40
Texas Beef	Cattle Feeding	40
DCP Midstream	Gas & Oil	30
Hydro Resources	Pump Supply, Water well	29
Remington Seeds	Sorghum Seed	25
Conoco Phillips	Gas & Oil	23
Dumas Cattle Feeders	Cattle Feeding	22

SERVICES:

Dumas ISD	Education	685
Moore Co Hospital	Medical Services	282
Ag Producers Coop	Farming Coop	240
Wal Mart Super Center	Discount Store	273
Moore Co	Municipal Services	173
City of Dumas	Municipal Services	137
United Supermarkets	Grocer	105
Sunray ISD	Education	99
Blue Knight Energy Partners	Oil & Gas Service	50