

# OFFICE FOR LEASE 404 E. CHATHAM ST.

Cary, NC 27511



LEE &  
ASSOCIATES

COMMERCIAL REAL ESTATE SERVICES  
RALEIGH DURHAM



## PROPERTY HIGHLIGHTS

- Suite D - 2nd Floor: 1,109 RSF Available
- Windows in each office
- First & Second floor spaces with separate entrances
- Parking in place
- Downtown Cary amenities within walking distance
- Tenant responsible for janitorial and data

## LOCATION DESCRIPTION

In Western Wake County in downtown Cary.

## OFFERING SUMMARY

Lease Rate:	\$1,710/month (Full Service)
Available SF:	1,109 SF
Building Size:	5,437 SF

Moss Withers, SIOR, MBA  
mwithers@lee-associates.com  
O: 919.576.2501  
C: 919.810.2492

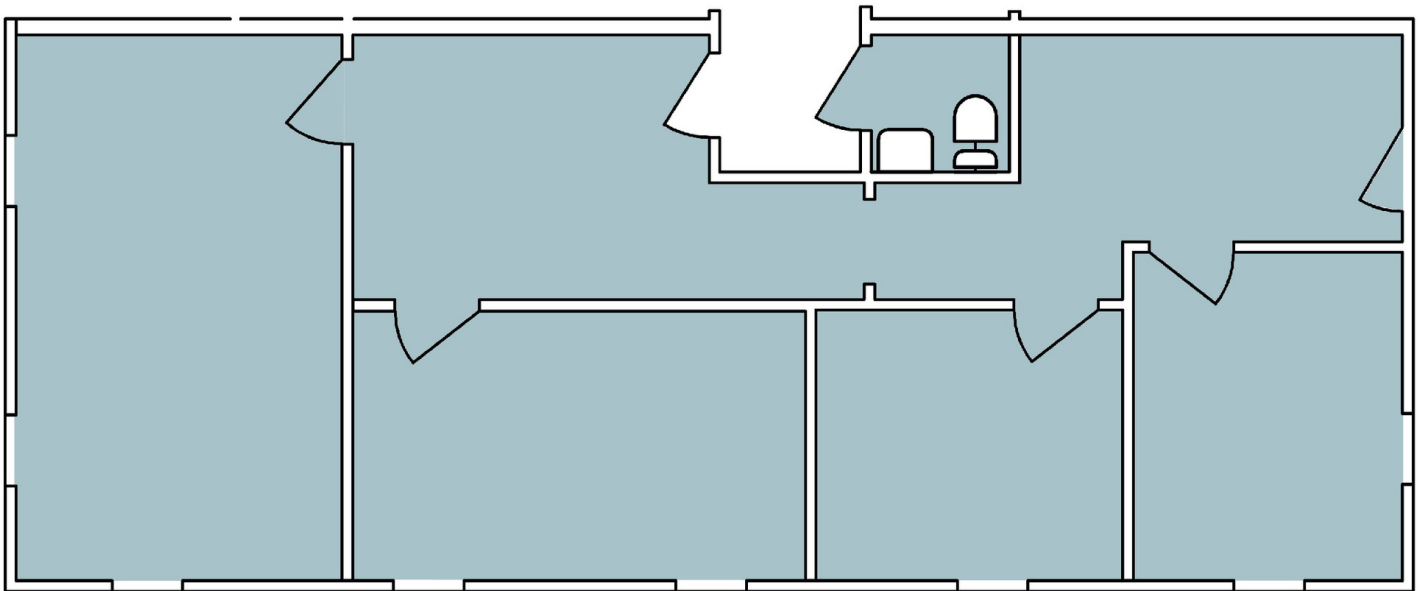
Karah Jennings McConnell  
kjennings@lee-associates.com  
O: 919.576.2502  
C: 919.817.0705

All information furnished regarding property for sale, rental or financing is from sources deemed reliable, but no warranty or representation is made to the accuracy thereof and same is submitted to errors, omissions, change of price, rental or other conditions prior to sale, lease or financing or withdrawal without notice.  
No liability of any kind is to be imposed on the broker herein.

**OFFICE FOR LEASE**  
**404 E. CHATHAM ST.**

Cary, NC 27511

**Suite D**  
**1,109 RSF**



Moss Withers, SIOR, MBA  
mwithers@lee-associates.com  
O: 919.576.2501  
C: 919.810.2492

Karah Jennings McConnell  
kjennings@lee-associates.com  
O: 919.576.2502  
C: 919.817.0705

All information furnished regarding property for sale, rental or financing is from sources deemed reliable, but no warranty or representation is made to the accuracy thereof and same is submitted to errors, omissions, change of price, rental or other conditions prior to sale, lease or financing or withdrawal without notice.  
No liability of any kind is to be imposed on the broker herein.

OFFICE FOR LEASE  
404 E. CHATHAM ST.

Cary, NC 27511



LEE & ASSOCIATES  
COMMERCIAL REAL ESTATE SERVICES  
RALEIGH DURHAM



Moss Withers, SIOR, MBA  
mwithers@lee-associates.com  
O: 919.576.2501  
C: 919.810.2492

Karah Jennings McConnell  
kjennings@lee-associates.com  
O: 919.576.2502  
C: 919.817.0705

All information furnished regarding property for sale, rental or financing is from sources deemed reliable, but no warranty or representation is made to the accuracy thereof and same is submitted to errors, omissions, change of price, rental or other conditions prior to sale, lease or financing or withdrawal without notice. No liability of any kind is to be imposed on the broker herein.

# OFFICE FOR LEASE 404 E. CHATHAM ST.

Cary, NC 27511



COMMERCIAL REAL ESTATE SERVICES  
RALEIGH DURHAM



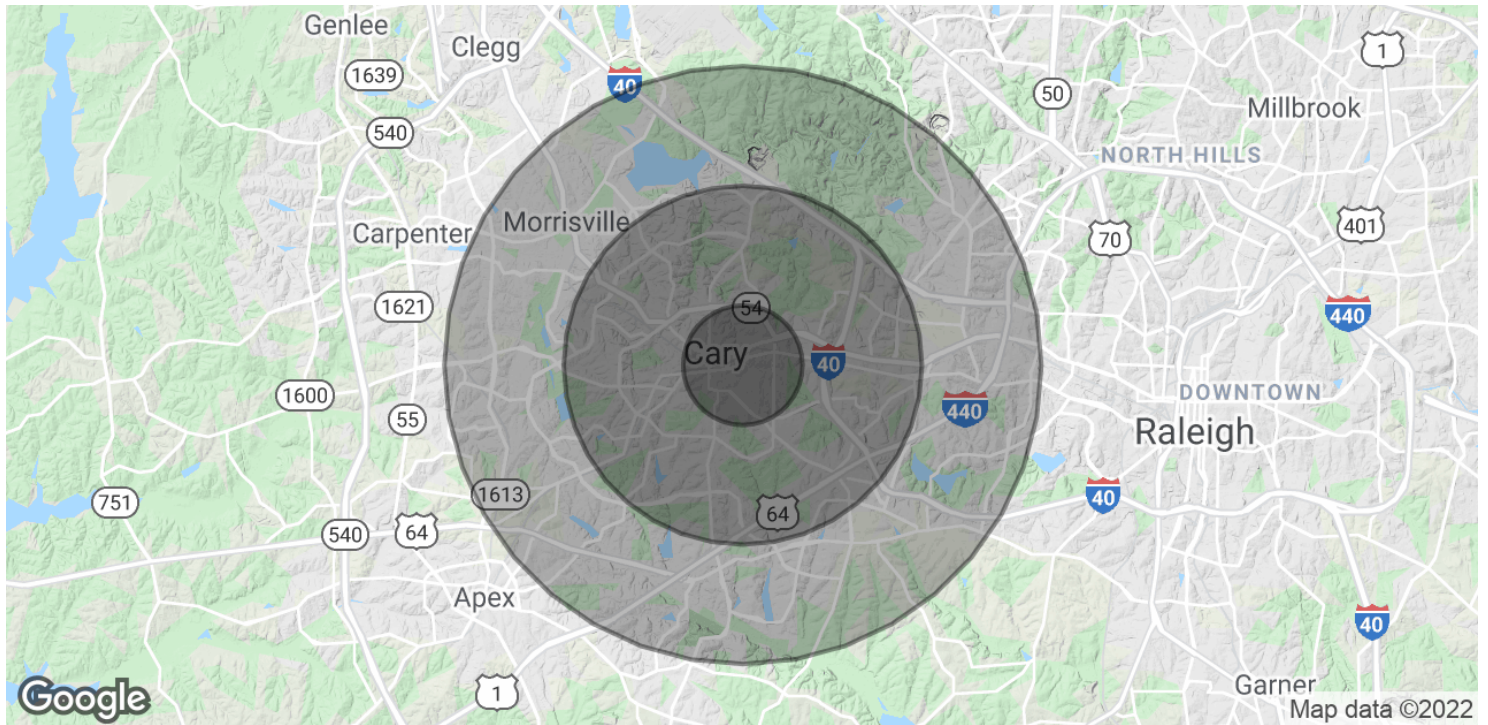
Moss Withers, SIOR, MBA  
mwithers@lee-associates.com  
O: 919.576.2501  
C: 919.810.2492

Karah Jennings McConnell  
kjennings@lee-associates.com  
O: 919.576.2502  
C: 919.817.0705

All information furnished regarding property for sale, rental or financing is from sources deemed reliable, but no warranty or representation is made to the accuracy thereof and same is submitted to errors, omissions, change of price, rental or other conditions prior to sale, lease or financing or withdrawal without notice. No liability of any kind is to be imposed on the broker herein.

**OFFICE FOR LEASE  
404 E. CHATHAM ST.**

Cary, NC 27511



**POPULATION**

	<b>1 MILE</b>	<b>3 MILES</b>	<b>5 MILES</b>
Total Population	10,015	69,159	147,853
Average age	32.2	35.3	35.5
Average age (Male)	31.6	33.9	34.9
Average age (Female)	32.5	36.3	36.0

**HOUSEHOLDS & INCOME**

	<b>1 MILE</b>	<b>3 MILES</b>	<b>5 MILES</b>
Total households	3,875	28,385	59,512
# of persons per HH	2.6	2.4	2.5
Average HH income	\$63,591	\$78,788	\$92,722
Average house value	\$183,217	\$243,571	\$300,668

\* Demographic data derived from 2010 US Census

Moss Withers, SIOR, MBA  
mwithers@lee-associates.com  
O: 919.576.2501  
C: 919.810.2492

Karah Jennings McConnell  
kjennings@lee-associates.com  
O: 919.576.2502  
C: 919.817.0705

All information furnished regarding property for sale, rental or financing is from sources deemed reliable, but no warranty or representation is made to the accuracy thereof and same is submitted to errors, omissions, change of price, rental or other conditions prior to sale, lease or financing or withdrawal without notice. No liability of any kind is to be imposed on the broker herein.