

# AVAILABLE WAREHOUSE

**LEASE PRICE: \$3.93/SF NNN**



## 12 JAYCEE DRIVE, W. HAZLETON, PA 18202

Available immediately is 19,190 SF of warehouse space. Space features 20 ft. ceiling heights, 29' x 39' column spacing and 3 truck high loading docks. Building is located in the Valmont Industrial Park.

### PROPERTY DETAILS:

- PIN: T7S700113B-63
- Public Utilities
- Brick & Steel Exterior
- Flat Roof
- Concrete and Tile Floors
- 20' Ceilings
- 480 / 277v, 800 amp, 3Phase Electric
- 3 Dock High Doors
- Fluorescent Lighting w/Skylights
- Wet Sprinkler System
- Zoned M-2 (General Mfg.)
- 2020 NNN Expenses - \$0.49/SF

### For Information Contact:

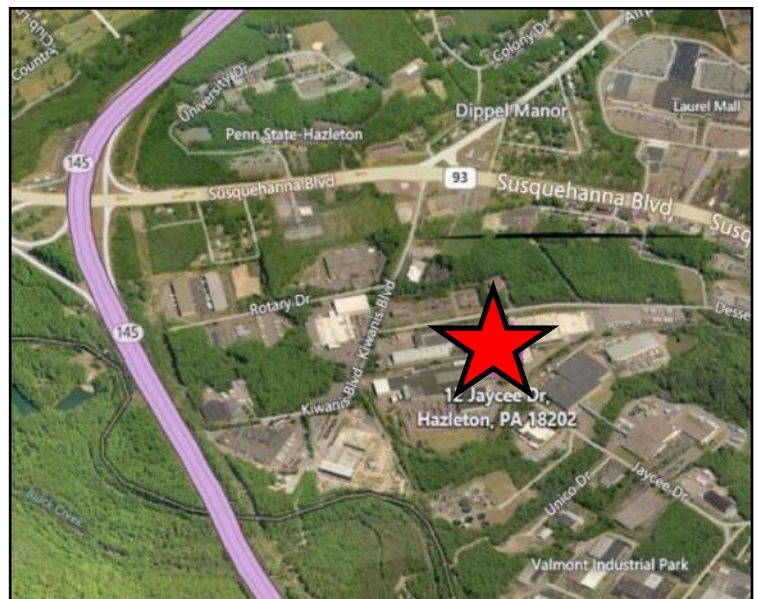
**Al Guari, Vice President-Brokerage**

aguari@mericle.com

Office: 570.823.1100 \* Cell: 570.499.2889

LATITUDE: 40.975350

LONGITUDE: -76.022050



Information shown is purported to be from reliable sources. No representation is made to the accuracy thereof, and is submitted subject to errors, omissions, prior sale/lease, withdrawal notice, or other conditions.

570.823.1100  
mericle.com



East Mountain Corporate Center  
100 Baltimore Drive  
Wilkes-Barre, PA 18702

Developing Northeastern Pennsylvania's I-81 Corridor Since 1985

TCN  
WORLDWIDE  
REAL ESTATE SERVICES